

2019 Tennessee Reportable Disease List for LABORATORIES

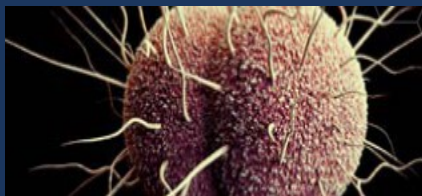
The diseases, events, and conditions reportable to Tennessee Department of Health (TDH) by laboratories, including laboratories in healthcare facilities, are listed below for 2019. Refer to Page 1 of this document for a list of diseases, events, and conditions reportable by healthcare providers. Laboratories should refer to the Detailed Laboratory Guidance document for additional guidance on reportable tests and results, and specimen/isolate submission to the Tennessee Department of Health Laboratory.

Report Via Fax

- Local/Regional Health Offices:
<https://www.tn.gov/health/health-program-areas/localdepartments.html>
- State/CEDEP: (615) 741-3857

Report Online

- All conditions should be reported online through NBS beginning February 4, 2019:
<https://hssi.tn.gov/auth/login>.
- To sign up for NBS online reporting, please fill out the REDCap survey: <https://redcap.health.tn.gov/redcap/surveys/?s=8L7CMWHN4M>.



Regular Reporting

PH-1600 only in 1 week (all diseases)



Phone immediately + PH-1600 in 1 week



Phone next business day + PH-1600 in 1 week

Special Reporting



All blood lead test results must be reported electronically or via fax. For more information, refer to <https://www.tn.gov/health/health-program-areas/mch-lead/for-providers.html> or email UT Extension at leadtrk@utk.edu for assistance.



Refer to the Detailed Laboratory Guidance for catchment area and/or send questions to HAI.Health@tn.gov.

Specimen or Isolate Submission

Required:



Requested:



Outbreaks and Events of Urgent Public Health Concern:

- Disease clusters or outbreaks !
- Single cases of pan-nonsusceptible organisms, unusual resistance mechanisms, or other emerging or unusual pathogen* !

*See Appendix A of the M100 Performance Standards for Antimicrobial Susceptibility Testing

Acinetobacter species: Carbapenem-Resistant ^{eip}

Anaplasma phagocytophilum, species

Babesia species

Bacillus anthracis !

Bordetella pertussis ☎

Borrelia burgdorferi

Brucella species ☎

Burkholderia mallei !, *pseudomallei* !

California/LaCrosse serogroup viruses

Campylobacter species

Candida auris (includes rule-out) ☎

Chikungunya virus ☎

Chlamydia trachomatis

Clostridium botulinum or botulinum toxin:
Foodborne !, Wound !, Infant

Clostridium difficile ^{eip}

Clostridium tetani

Colistin-resistant gram negative bacteria ☎

Corynebacterium diphtheria ☎, *ulcerans* ☎

Coxiella burnetii ☎

Cryptosporidium species

Cyclospora species

Dengue virus

Ehrlichia species

Enterobacteriaceae: Carbapenem-Resistant (all genera)

Enterococcus species: Vancomycin-Resistant Invasive Disease

Escherichia coli: Extended Spectrum Beta Lactamase-Producing ^{eip}

Escherichia coli: Shiga toxin-producing

Equine Encephalitis viruses: Eastern ☎, Venezuelan ☎, Western

Francisella tularensis ☎

Haemophilus influenzae ☎

Hepatitis A virus ☎

Hepatitis B virus

Hepatitis C virus

Human Immunodeficiency Virus

Influenza A virus: Novel !

Klebsiella species: Extended Spectrum Beta Lactamase-Producing ^{eip}

Lead Levels ^{UT Extension}

Legionella species

Listeria species

Measles virus !

Meningitis: Other Bacterial ☎

Middle East Respiratory Syndrome Coronavirus (MERS-CoV) !

Mumps virus ☎

Mycobacterium leprae

Mycobacterium nontuberculous species (extra-pulmonary only)

Mycobacterium tuberculosis complex (*M. tuberculosis*, *M. bovis*, *M. canettii*, *M. africanum*, *M. microti*) ☎

Neisseria gonorrhoeae

Neisseria meningitidis !

Plasmodium species

Poliovirus ☎

Rabies virus: Animal, Human !

Ricin toxin !

Rickettsia species (other than *R. typhus*)

Rubella virus ☎

St. Louis Encephalitis virus

Salmonella: Typhi ☎, other species

Shigella species

Staphylococcus aureus:
Enterotoxin B-producing (pulmonary) !
Methicillin-Resistant Invasive Disease ^{eip}
Toxin-producing (TSST-1)
Vancomycin Non-Susceptible (All Forms) ☎

Streptococcus agalactiae Invasive Disease

Streptococcus pneumoniae Invasive Disease

Streptococcus pyogenes:
Invasive Disease ☎, Toxin-producing

Treponema pallidum: Congenital ☎, Other

Trypanosoma cruzi

Variola virus (Orthopox virus) !

Vibrio cholerae ☎, species

Viral Hemorrhagic Fever viruses (including Ebola, Lassa, Marburg) !

West Nile virus

Yellow Fever virus ☎

Yersinia pestis ☎, species

Zika virus ☎

More information about reporting is available on the Reportable Diseases website at <https://www.tn.gov/health/cedep/reportable-diseases.html>. For questions, contact CEDEP at (615) 741-7247 or (800) 404-3006.

For more details about the laboratory tests and results, specimen or isolate submission requirements, and catchment areas for individual pathogens, please refer to the 2019 Reportable Diseases in Tennessee: Detailed Laboratory Guidance.