

Environments

INFANT/TODDLER AND PRESCHOOL

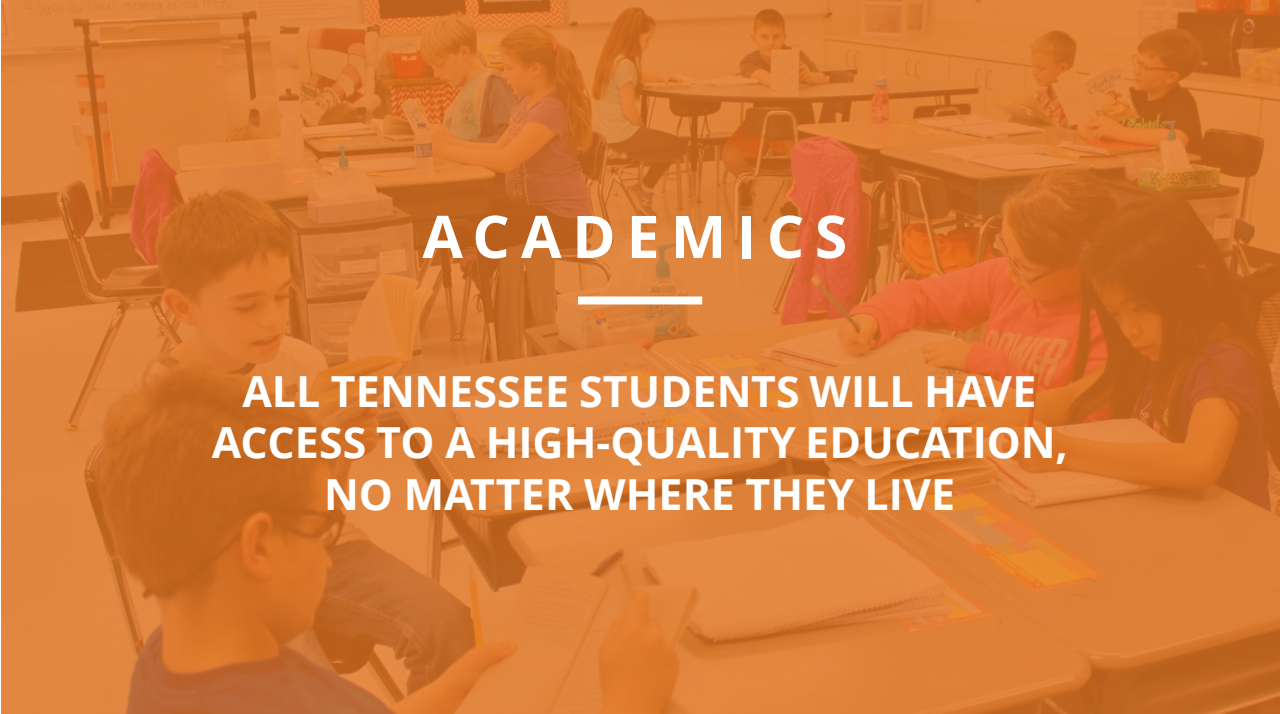
ECQSS/ Early Learning Division





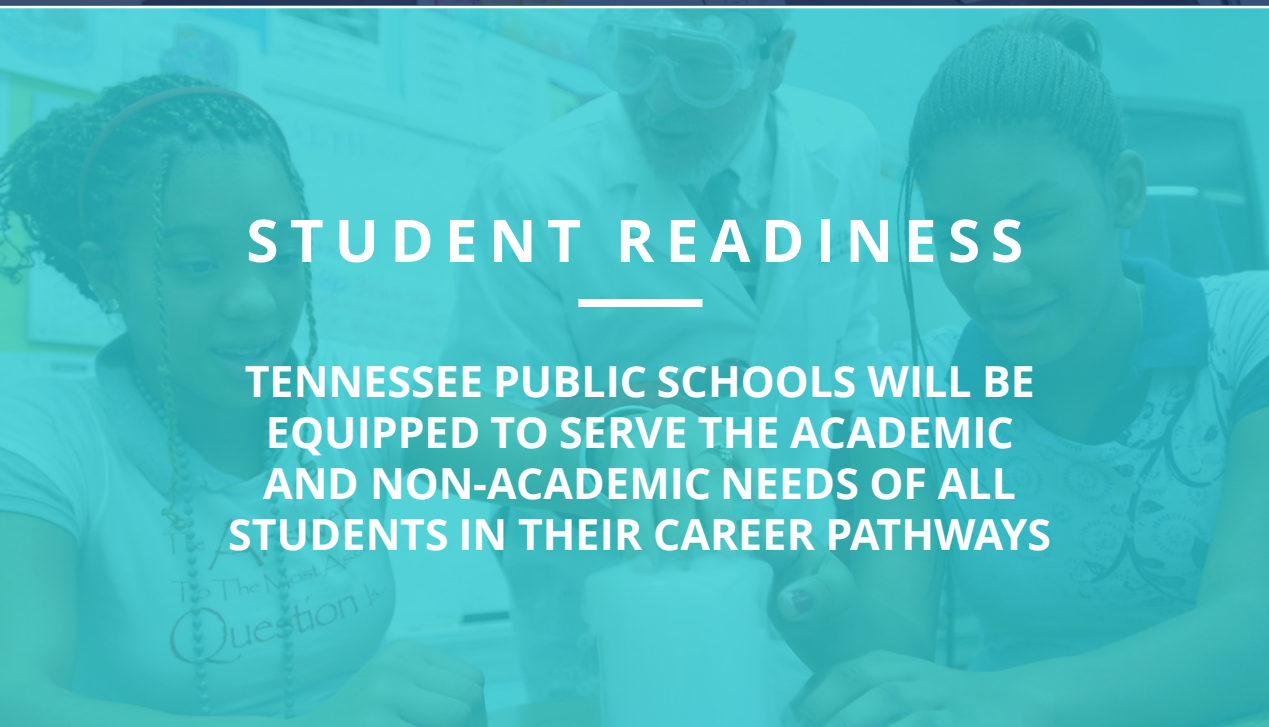
BEST FOR ALL

We will set all students on a path to success.



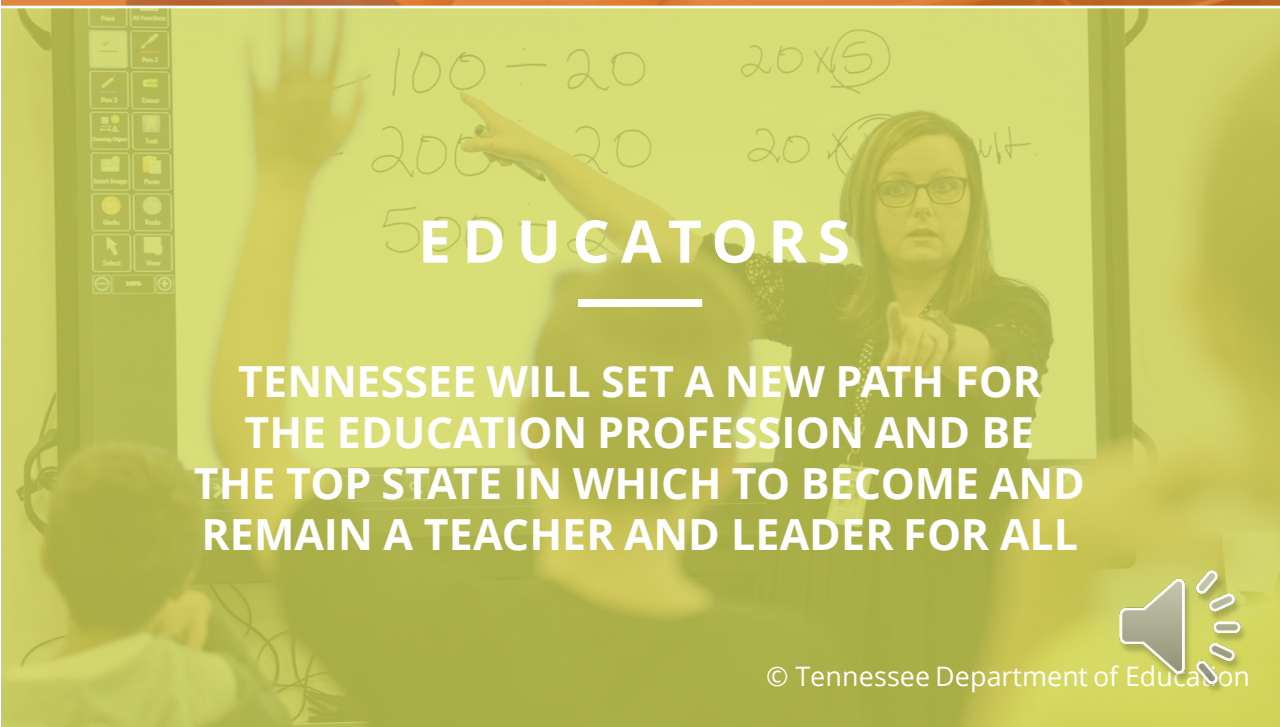
ACADEMICS

ALL TENNESSEE STUDENTS WILL HAVE ACCESS TO A HIGH-QUALITY EDUCATION, NO MATTER WHERE THEY LIVE



STUDENT READINESS

TENNESSEE PUBLIC SCHOOLS WILL BE EQUIPPED TO SERVE THE ACADEMIC AND NON-ACADEMIC NEEDS OF ALL STUDENTS IN THEIR CAREER PATHWAYS



EDUCATORS

TENNESSEE WILL SET A NEW PATH FOR THE EDUCATION PROFESSION AND BE THE TOP STATE IN WHICH TO BECOME AND REMAIN A TEACHER AND LEADER FOR ALL



- Environments should be safe
- Promotes exploration
- Promotes independence
- Considers developmental needs
- Sparks students' interest
- Intentional
- Promote a positive climate
- Environments are dynamic



■ [SBE Rule 0520-12-01 STANDARDS FOR SCHOOL ADMINISTERED CHILD CARE PROGRAMS](#)



STUDENT READINESS



Environments

Student/Adult Furniture



Mats for Napping Head to Feet



Adult Furniture

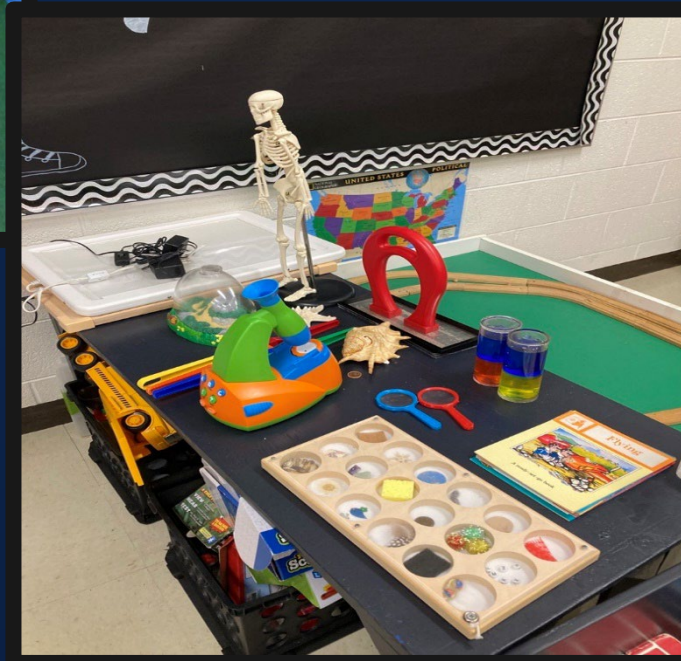


Environments

Materials to Spark Student Interest/Exploration



Materials for Sensory



Quantity of Materials



Environments

Materials for Writing/Art

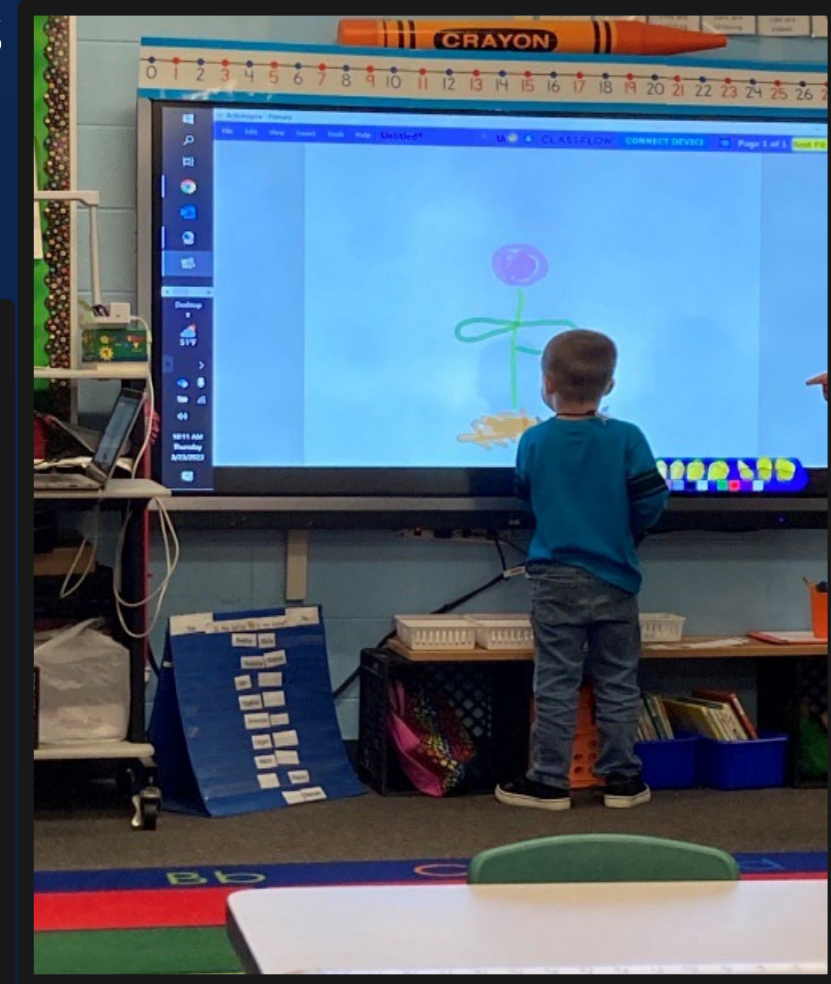


Environments

Books/Privacy/Independence



Sensory/Blocks/Writing Centers

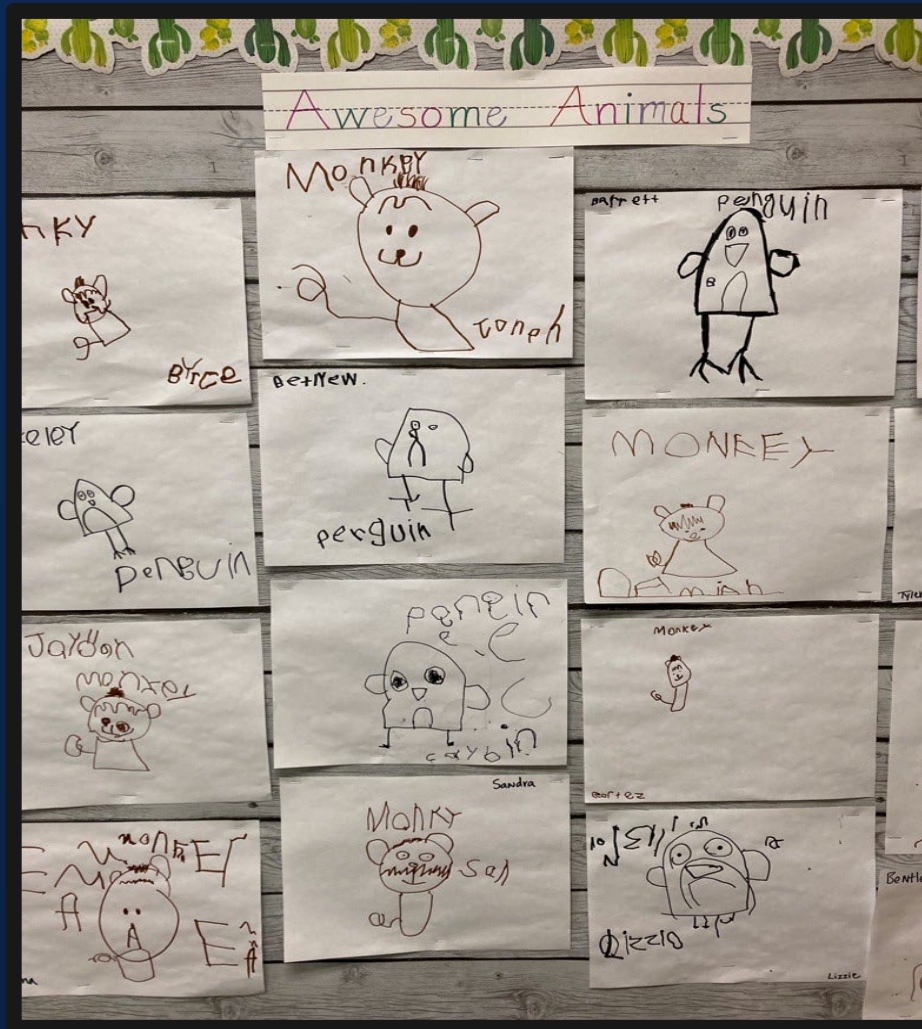
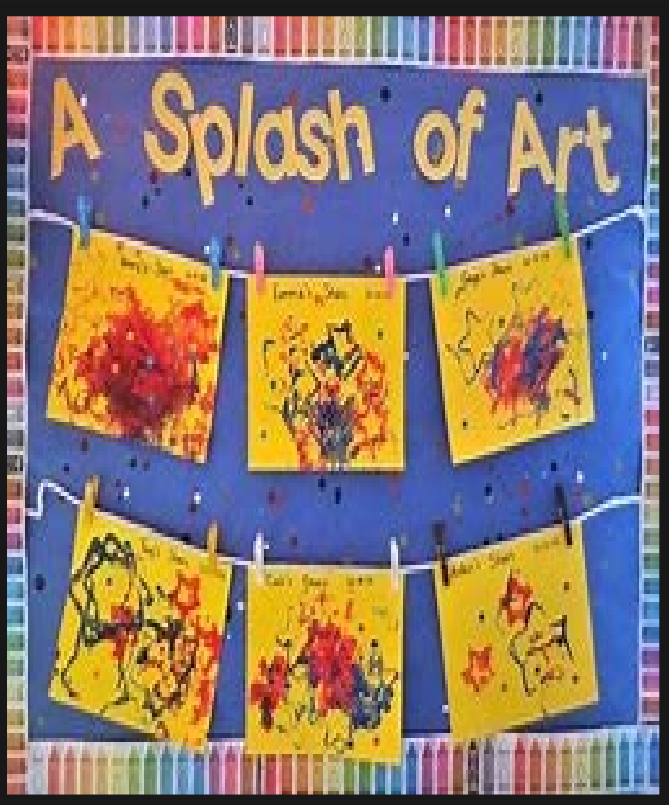


Environments



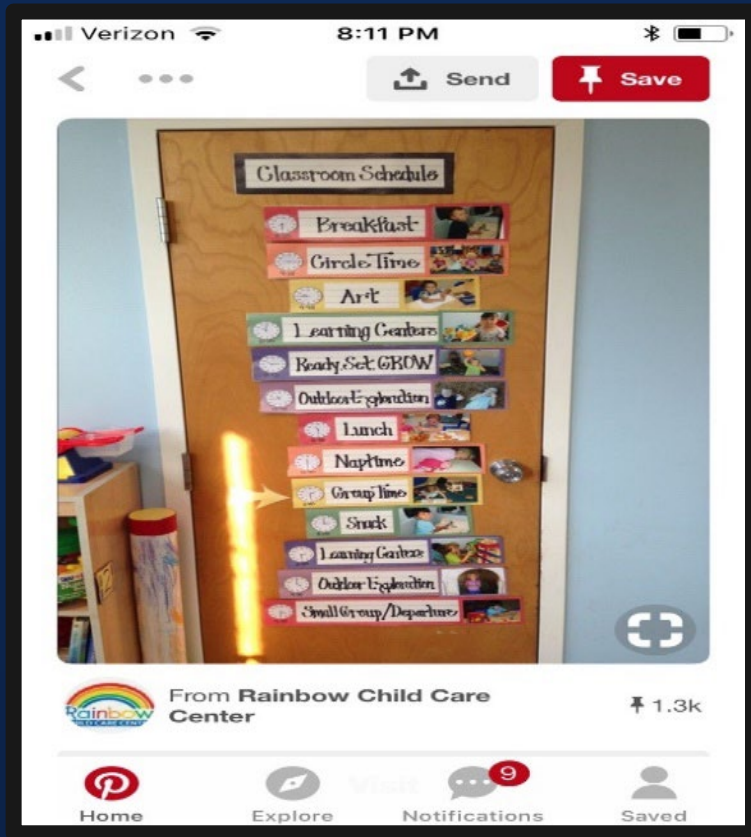
Environments

Students
Artwork/Writing



Environments

Classroom Expectations



Student Involvement

Educational Displays



Equipment

- Be developmentally appropriate
- Accessible to children in care more than 3 hours
- Be sufficient in amount and variety
- Children have at least 3 different types of play
- Shall be placed to avoid injury
- Resilient surfacing
- Playground maintained



Indoors

- 30 square feet of usable indoor space for each child
- For Example: 30 feet in length and 20 feet in width: $30 \times 20 = 600$ sq ft
- $600 / 30$ (sq ft per child) = 20 Children in the room

Outside

- 50 square feet per child for outside play
- For example: 33 feet in length and 31 feet in width: $33 \times 31 = 1023$ sq ft
- $1023 / 50 = 20$ children at once in the outside area
- Outside area **MUST** be fenced in with a fence 4 feet or higher in height



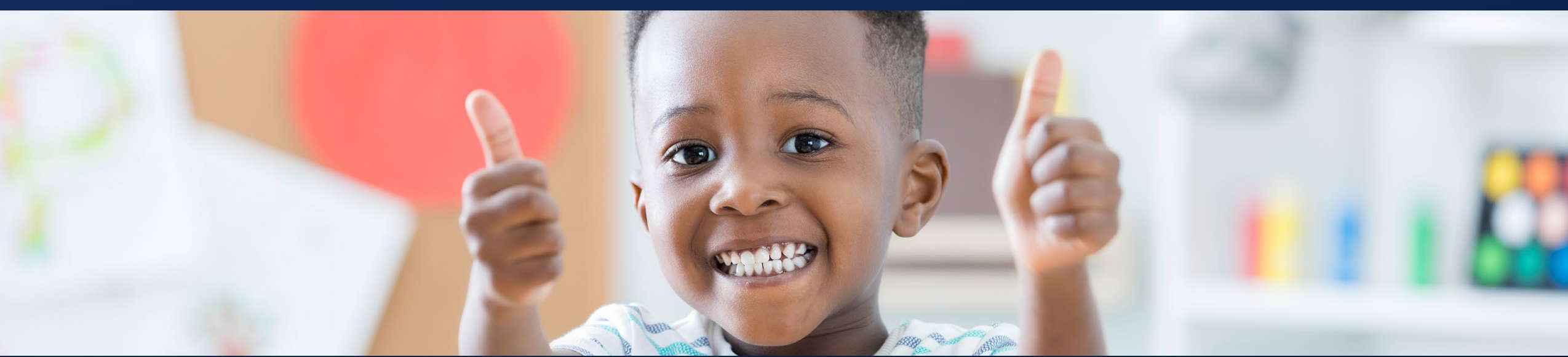
Usable Space:
(Included in calculations)

- Bookshelves used in centers or reading nooks
- Children's tables (centers, sand and water, etc.)
- Shelving used to house toys, blocks, manipulatives, etc.
- Other items that are used to enhance a child's learning space

Non-Usable Space:
(Not included calculation)

- Teacher's desk
- Teacher's file cabinet
- Cubbies
- Cot or mat racks
- Diapering tables
- Cribs
- Restrooms





Thank You!

Permission is granted to use and copy these materials for non-commercial educational purposes with attribution credit to the "Tennessee Department of Education". If you wish to use these materials for reasons other than non-commercial educational purposes, please contact Joanna Collins (Joanna.Collins@tn.gov).



© Tennessee Department of Education