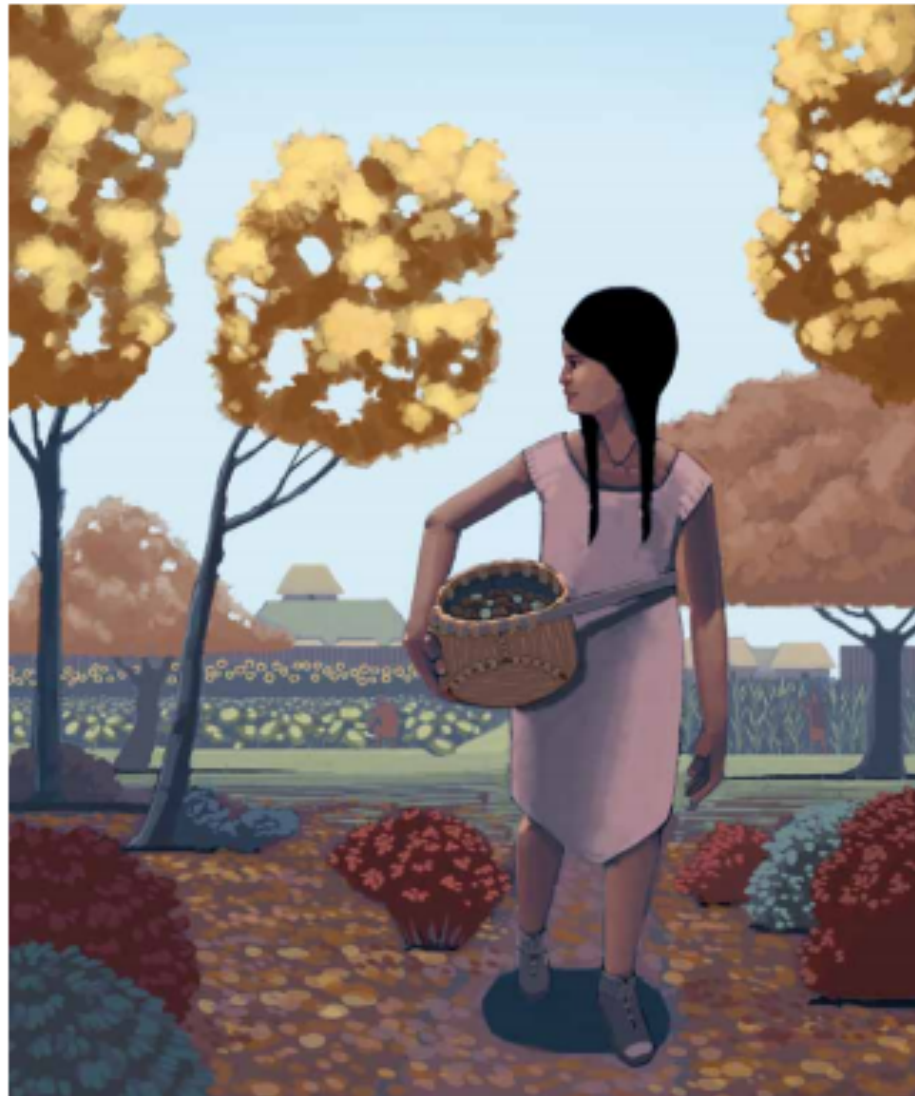


PBS Lesson Series

ELA, Grade 4, Lesson 3
Teacher Packet

Akando and Aponi, the Gatherers

Who?	
What?	
Where?	
When?	
Why?	



Aponi looks back toward her village.

L3-B



Food that children gathered

L3-C



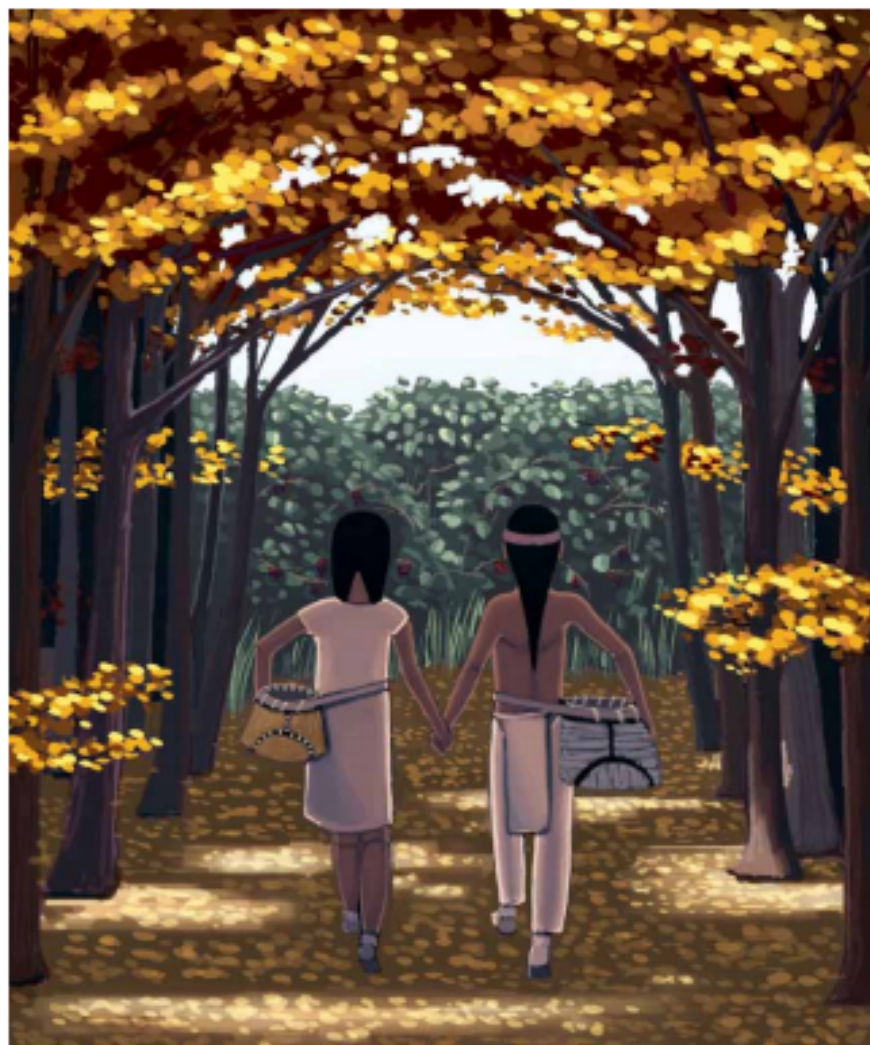
Aponi calls to Akando to wait.

L3-D



Akando and Aponi play a guessing game.

L3-E



Akando and Aponi walk hand in hand to collect more food.

L3-F

Akando and Aponi, the Gatherers

Who?	Akando and Aponi
What?	They were gathering items from nature to preserve for food during the winter and playing a game.
Where?	They were in a forest near the village.
When?	It was the beginning of autumn.
Why?	They had to collect food so they would have it for the winter.