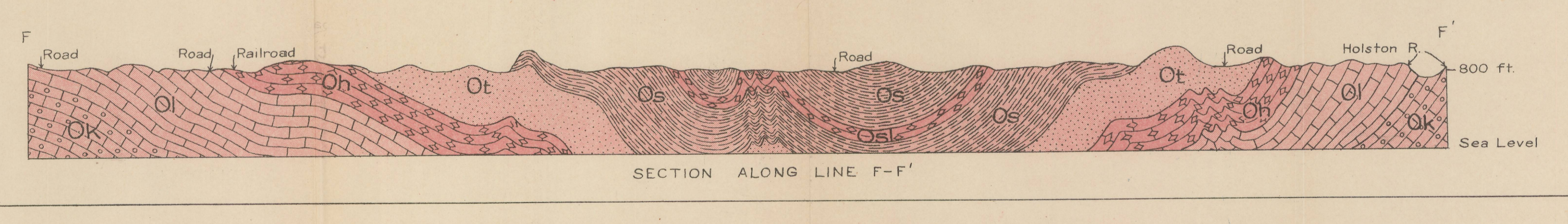
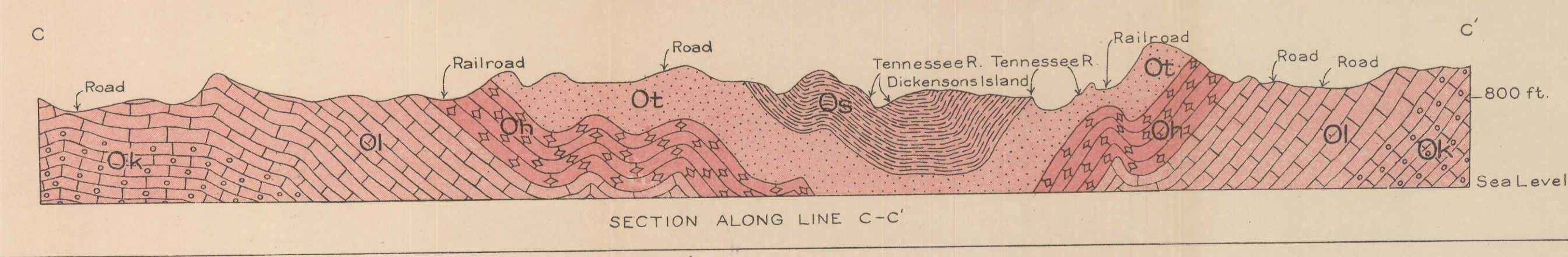
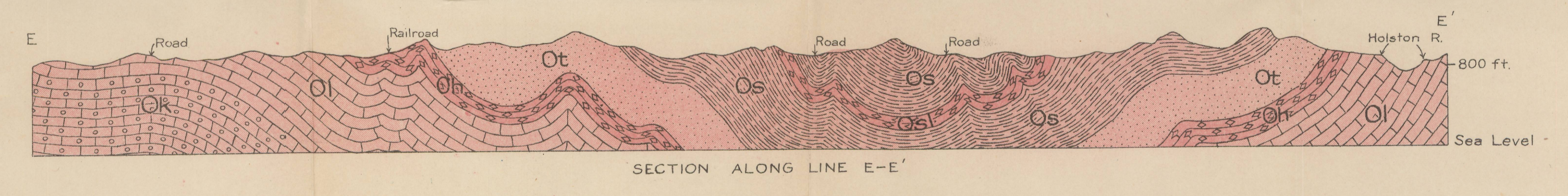
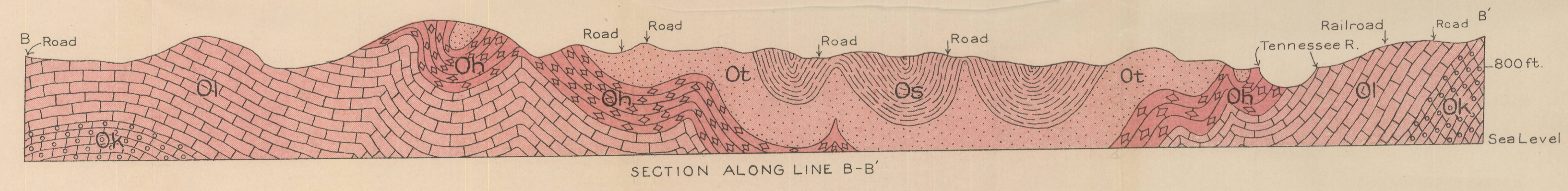
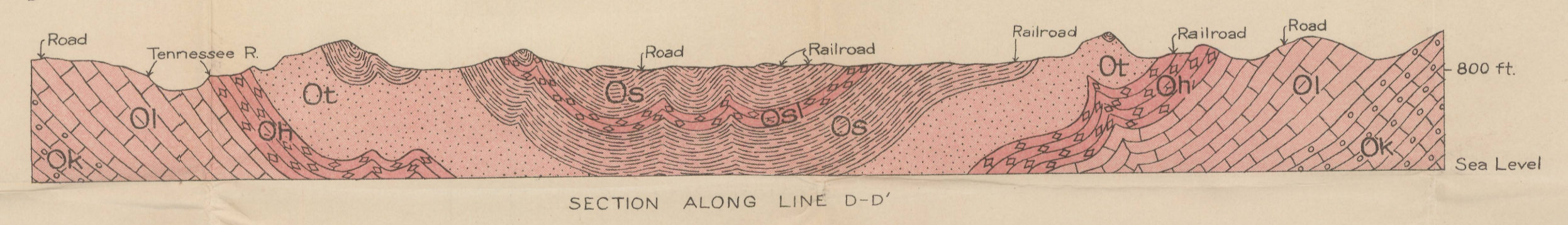
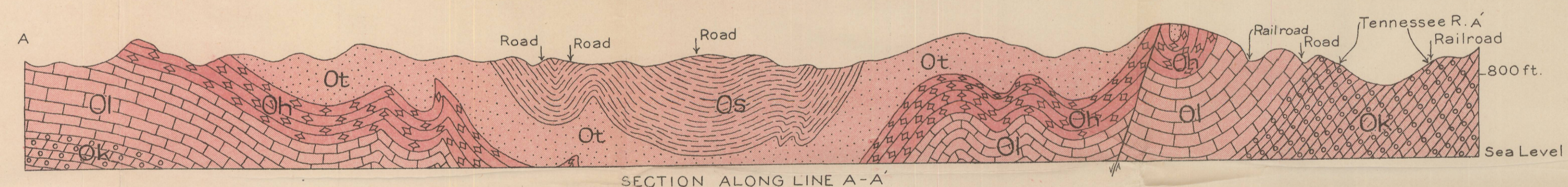


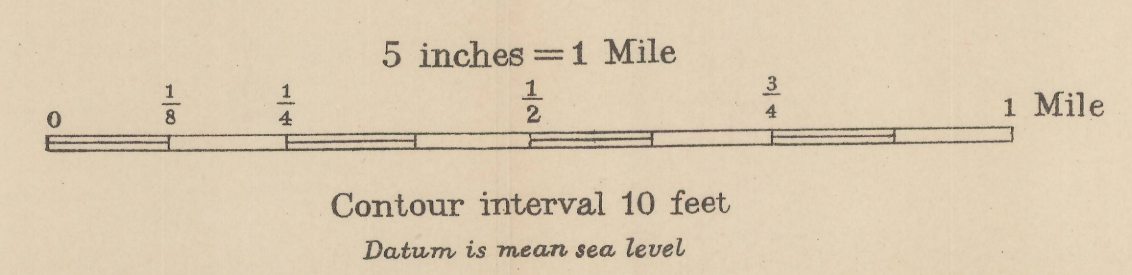
**EXPLANATION**

Os	Sevier shale, including marble bed, Osl. (Ottosee shale of Ulrich)
Ot	Tellico sandstone
Oh	Holston marble
Oi	Lenoir and Moshem limestones
Ok	Knox dolomite (upper part)
- - -	Fault
↘ ↙	Dip and strike of beds
X	Quarry
↖ ↗	Pitch of axis of fold
—	Road
⋯	Secondary road

- 1 Marble for road ballast etc.
  - 2
  - 3 Knoxville Marble Co.
  - 4 Marble for road ballast
  - 5 Sandstone for road ballast etc.
  - 6
  - 7
  - 8 Curbstone and road ballast
  - 9 Sandstone for road ballast
  - 10 Road ballast Quarry
  - 11 Marble for road ballast etc.
  - 12 Marble for road ballast
  - 13 Kern's Marble Quarry
  - 14
  - 15 Marble Quarry
  - 16 Marble Prospect Pit
  - 17 Knoxville Marble Co.
  - 18
  - 19, 20, 21, Ross Republic Marble Co. \*
  - 22 Tennessee Producers Quarry \*
  - 23 Neubert Quarry (abandoned)
  - 24 Buckle, Brandow and Eckle Quarry (abandoned)
  - 25 Gray Marble Quarry
  - 26 Victoria Marble Quarry
  - 27 Holston Marble Quarry \*
  - 28, 29, 30, 31, 32, Appalachian Co. Quarries
  - 33 Gray Knox or J. B. Jones Quarry \*
  - 34 Gray Eagle Marble Quarry \*
  - 35
  - 36 Asbury Marble Quarry \*
- \* Quarries in operation in 1919, 1920, 1921.



### MARBLE BELT OF KNOXVILLE AND VICINITY



Surveyed in cooperation with the U. S. Geological Survey 1919, 1920, and 1921  
Topography and geology by K. K. Kimball and A. C. McFarlan.  
Assisted by E. W. Bowe

