



TN NHSN User Call

Monday, October 16, 10am CT

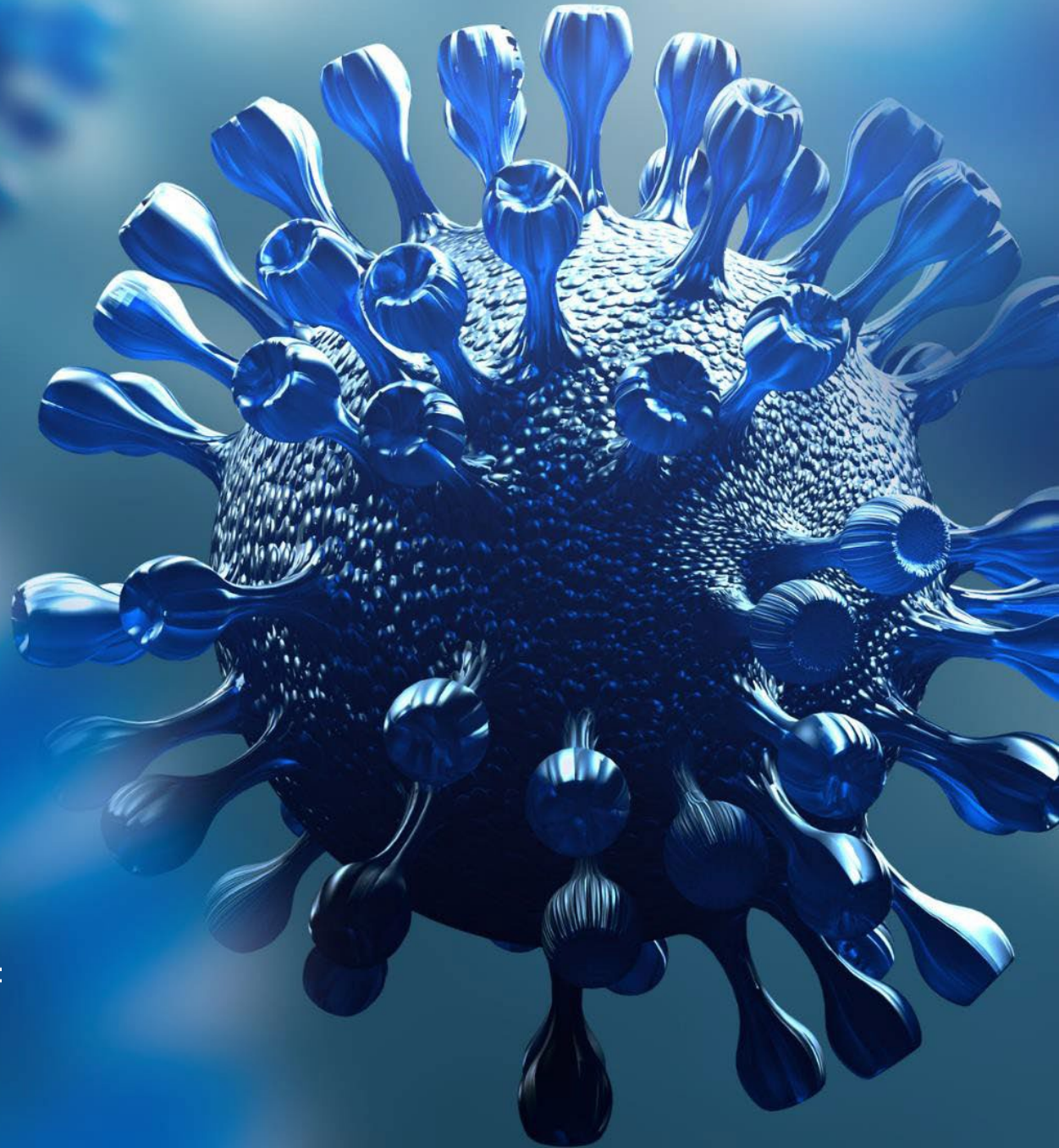
Agenda

- **COVID-19 Update**
 - Magdalena Dorvil-Joanem, MD, MPH
- **NHSN Update**
 - Vicky Lindsey, RN, CIC
- **Annual Report Review Series: CAUTI**
 - Abigail Marrero, MPH, CPH
- **Multi-Drug Resistant Organism (MDRO) Surveillance Team Update**
 - Lauren Daniel, MPH

TDH NHSN Team

- **Abigail Marrero, MPH, CPH**
 - Senior NHSN Epidemiologist
- **Vicky Lindsey, AAS, RN, CIC**
 - Senior NHSN Public Health Nurse Consultant
 - Lead Technological Assistance
 - Infection Prevention and Control Specialist
- **Tara Suhs, MPH**
 - Assistant NHSN Epidemiologist
 - MRSA Initiative Lead
- **Ashley Gambrell, MPH**
 - Assistant NHSN Epidemiologist
- **Marissa Turner, MPH**
 - Assistant NHSN Epidemiologist
- **Alex Kurutz, MPH**
 - Dialysis Epidemiologist

Respiratory Illness Update



TN

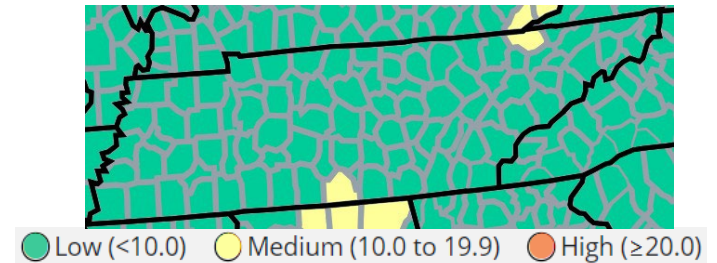
Department of
Health

COVID-19 Trends in TN & US

- Tennessee

- New cases decreasing ▼
- Emergency department visits decreasing ▼
- Hospitalizations decreasing ▼
- Deaths decreasing ▼

New COVID-19 hospital admissions per 100,000 population, past week (total)



- U.S.A.

- New hospitalizations decreasing ▼
- Deaths decreasing ▼

Severity Indicators

Hospitalizations >

Hospital Admissions

16,766

(October 1 to October 7, 2023)

Trend in Hospital Admissions

-8.2% in most recent week



Aug 19, 2023

Oct 7, 2023

Deaths >

% of All Deaths in U.S. Due to COVID-19

2.5%

(October 1 to October 7, 2023)

Trend in % COVID-19 Deaths







-3.8% in most recent week



Aug 19, 2023

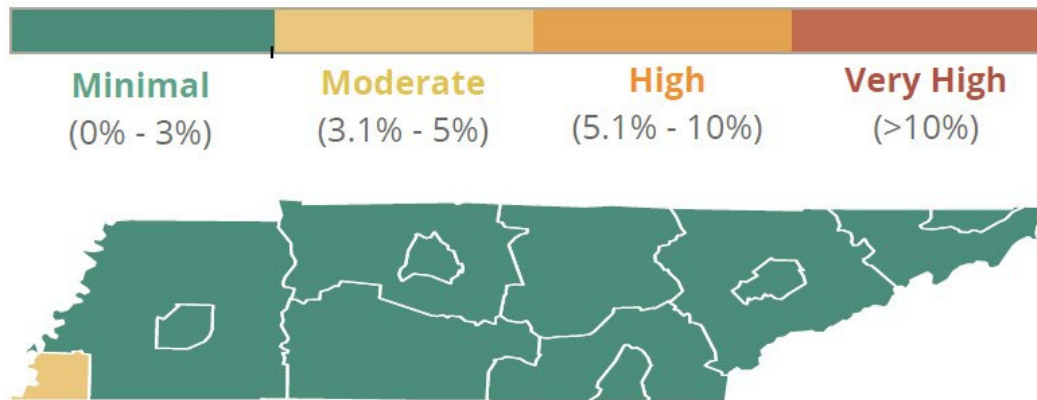
Oct 7, 2023

Influenza in Tennessee Snapshot

| SURVEILLANCE INDICATOR | TREND | CURRENT WEEK | PREVIOUS WEEK | | | | | | |
|---|---|--|--------------------------------|--------------|---------------------------------|------------------------------|----------|-----------|--|
|  ILLNESS Percentage of outpatient visits due to influenza-like illness (ILI) |  | 1.9% | 1.9% | | | | | | |
|  LABORATORY Percentage of positive specimens & predominant strain of influenza |  | 0.0% n/a | 1.0% Influenza B | | | | | | |
|  OUTBREAKS 2 or more ill persons of a shared setting | | <table border="1"> <thead> <tr> <th data-bbox="1035 772 1456 822">NEWLY REPORTED</th> <th data-bbox="1460 772 1852 822">SEASON TOTAL</th> </tr> <tr> <td data-bbox="1035 822 1456 858"><i>since September 16, 2023</i></td> <td data-bbox="1460 822 1852 858"><i>since October 1, 2022</i></td> </tr> </thead> <tbody> <tr> <td data-bbox="1035 858 1456 901">1</td> <td data-bbox="1460 858 1852 901">16</td> </tr> </tbody> </table> | NEWLY REPORTED | SEASON TOTAL | <i>since September 16, 2023</i> | <i>since October 1, 2022</i> | 1 | 16 | |
| NEWLY REPORTED | SEASON TOTAL | | | | | | | | |
| <i>since September 16, 2023</i> | <i>since October 1, 2022</i> | | | | | | | | |
| 1 | 16 | | | | | | | | |
|  DEATHS Newly reported and season total pediatric influenza-associated deaths | | 0 | 3 | | | | | | |

Influenza-Like Illness

Percent of Outpatient Visits for Influenza-Like Illness Week 38



| | |
|-----------------------------------|------|
| Chattanooga/Hamilton County Metro | 2.5% |
| East Region | 1.3% |
| Jackson/Madison County Metro | 0.7% |
| Knox County Metro | 0.6% |
| Memphis/Shelby County Metro | 3.2% |
| Mid Cumberland Region | 1.6% |
| Nashville/Davidson County Metro | 1.3% |

| | |
|-------------------------|------|
| Northeast Region | 2.6% |
| Southeast Region | 1.1% |
| South Central Region | 0.0% |
| Sullivan County Metro | 1.6% |
| Upper Cumberland Region | 0.0% |
| West Region | 0.3% |

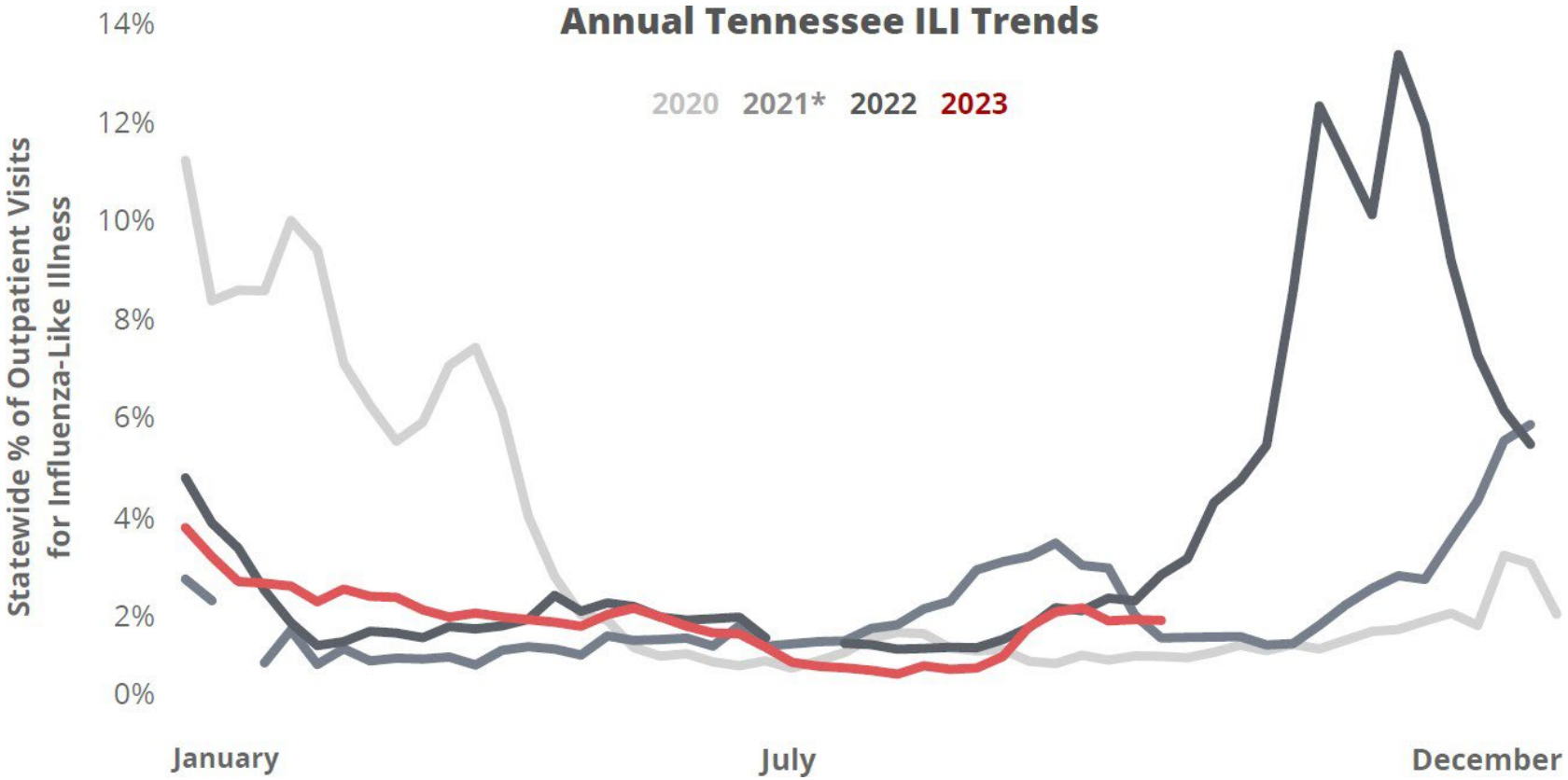
Current Flu Outbreaks

Flu Outbreaks Currently Open by Region



During the week of September 17, 2023,
there were **2** influenza outbreaks in Tennessee -
(ETR & WTR)

Seasonal Perspective



Bottom Line

- **Respiratory Illness in Tennessee**
 - COVID – decreasing activity ▼
 - Flu – low activity ▼



NHSN Updates

Vicky Lindsey, AAS, RN, CIC | Tennessee Department of Health | Communicable and Environmental Diseases and Emergency Preparedness

NHSN Protocol and Training Team (PaTT)

- Ask the NHSN Experts
- Monthly Webinars
- [Link](#) to register and submit your Surgical Site Infections (SSI) questions.
- If you have any questions about the webinar series, they can be emailed to NHSNTrain@cdc.gov.



The poster features the NHSN logo (National Healthcare Safety Network) and the CDC logo. It lists the dates and topics for the PaTT Ask the Experts Webinar Series 2023. The text includes details about registration, session length, and the target audience.

| PaTT Ask the Experts Webinar Series 2023 | |
|--|--|
| Date | Topic |
| October 25 th | Surgical Site Infections (SSI) |
| November 15 th | Chapter 17 - Surveillance Definitions for Specific Types of Infections |
| December 13 th | Urinary Tract Infection (UTI)/Pneumonia (PNEU) |

Webinars will be held on Wednesdays at 2:00 pm EST
Mark your calendars

NHSN - Service Now

- On September 25, 2023, NHSN-ServiceNow is available to submit questions to the NHSN Help Desk.
- The new portal can be accessed [here](#) and should be used in place of nhsn@cdc.gov, nhsntrain@cdc.gov, and nhsndua@cdc.gov.
 - ServiceNow will help the NHSN team respond to your questions faster.
 - Users will be authenticated using CDC's Secure Access Management Services (SAMS), the same way you access NHSN.
 - If you do not have a SAMS login, or are unable to access ServiceNow, you can still email the NHSN Help Desk at nhsn@cdc.gov.

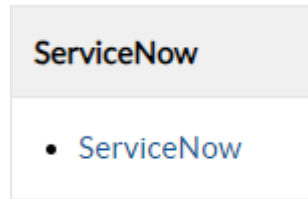
NHSN - Service Now

****Please note:**

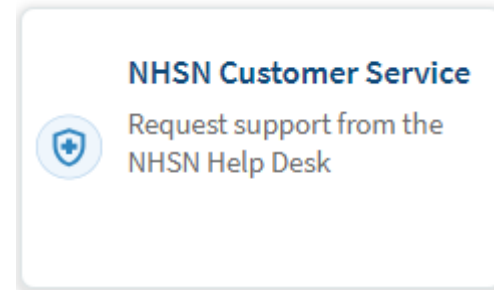
- Currently open tickets will be addressed by the existing procedure. No new action is needed on your part.
- Tickets requiring CDA support from the NHSN CDA Team should continue to be emailed to nhsnCDA@cdc.gov until further notice.
- AUR test files for CMS Promoting Interoperability Program validation should continue to be emailed to nhsnCDA@cdc.gov until further notice.

NHSN - Service Now

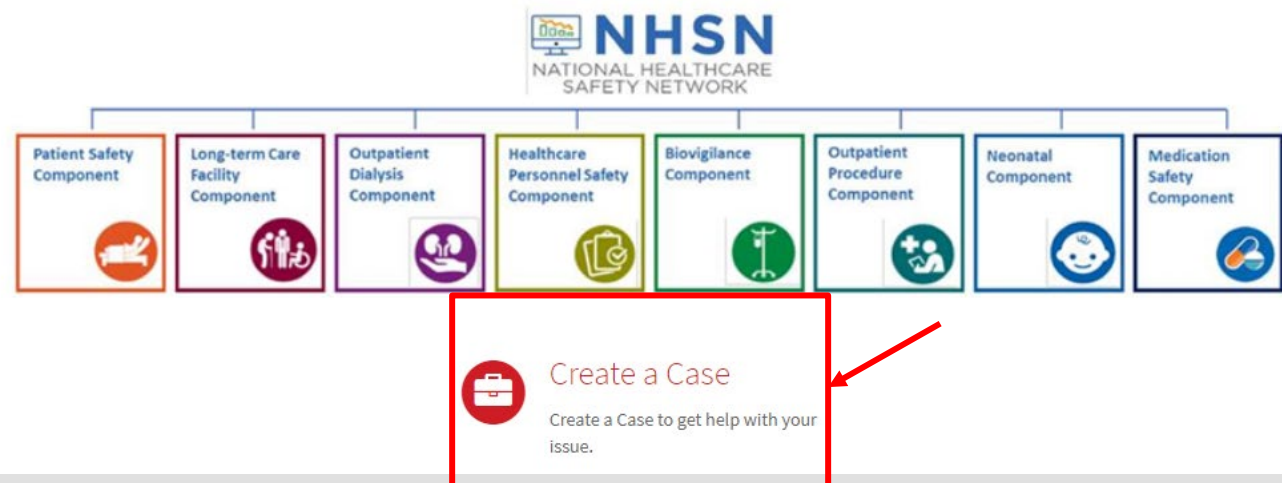
- Sign in to NHSN > select



- Under Common Support Requests > select



- This page appears



NHSN Updates: Vaccination

- CDC recommends everyone aged 6 months and older should receive the 2023-2024 updated COVID-19 vaccine to protect against serious illness from COVID-19 and to remain up to date.
- Individuals are considered up-to-date (beginning the reporting week 9/25/2023 – 10/1/2023) if they have received a 2023-2024 updated COVID-19 vaccine, or if they received a bivalent COVID-19 vaccine within the last 2 months.
 - Facilities should report zero (0) up to date until individuals receive the 2023-2024 updated COVID-19 vaccine.

NHSN Updates: New Person-Level Vaccination Form

- The Excel data tracking worksheet has been built directly into the HPS Component of the NHSN application. This is now called the HPS Person-level Vaccination Form.
- The NHSN Vaccination Team will host webinars to review how to use this new and optional form.
 - HPS Person Level COVID-19 Vaccination General Training (Replay)
 - Nov 8, 2023, 02:00 PM Eastern Time (US and Canada)
Registration: [Link.](#)

Antimicrobial Use and Resistance Module

- As you know, beginning in 2024 reporting to the AUR Module will be required
- NHSN Team will be hosting two Office Hours sessions:
 - Monday, October 30: 12:00-1:00pm ET
 - [Registration link](#)

CDC Webinar – Bridge Access Program

- There is a CDC live webinar on the [COVID-19 Bridge Access Program](#).
 - This program provides free COVID-19 vaccines for uninsured adults and adults whose insurance doesn't cover all COVID-19 vaccine costs.
 - In this briefing, CDC will share an update on the program, including communication and partner resources and answer frequently asked questions.
- COVID-19 Bridge Access Program Briefing and Questions Answered
 - WHEN: Monday, October 16, 2:00–2:45 PM ET
 - REGISTER NOW: [cdc.zoomgov.com/webinar/register/...](#)



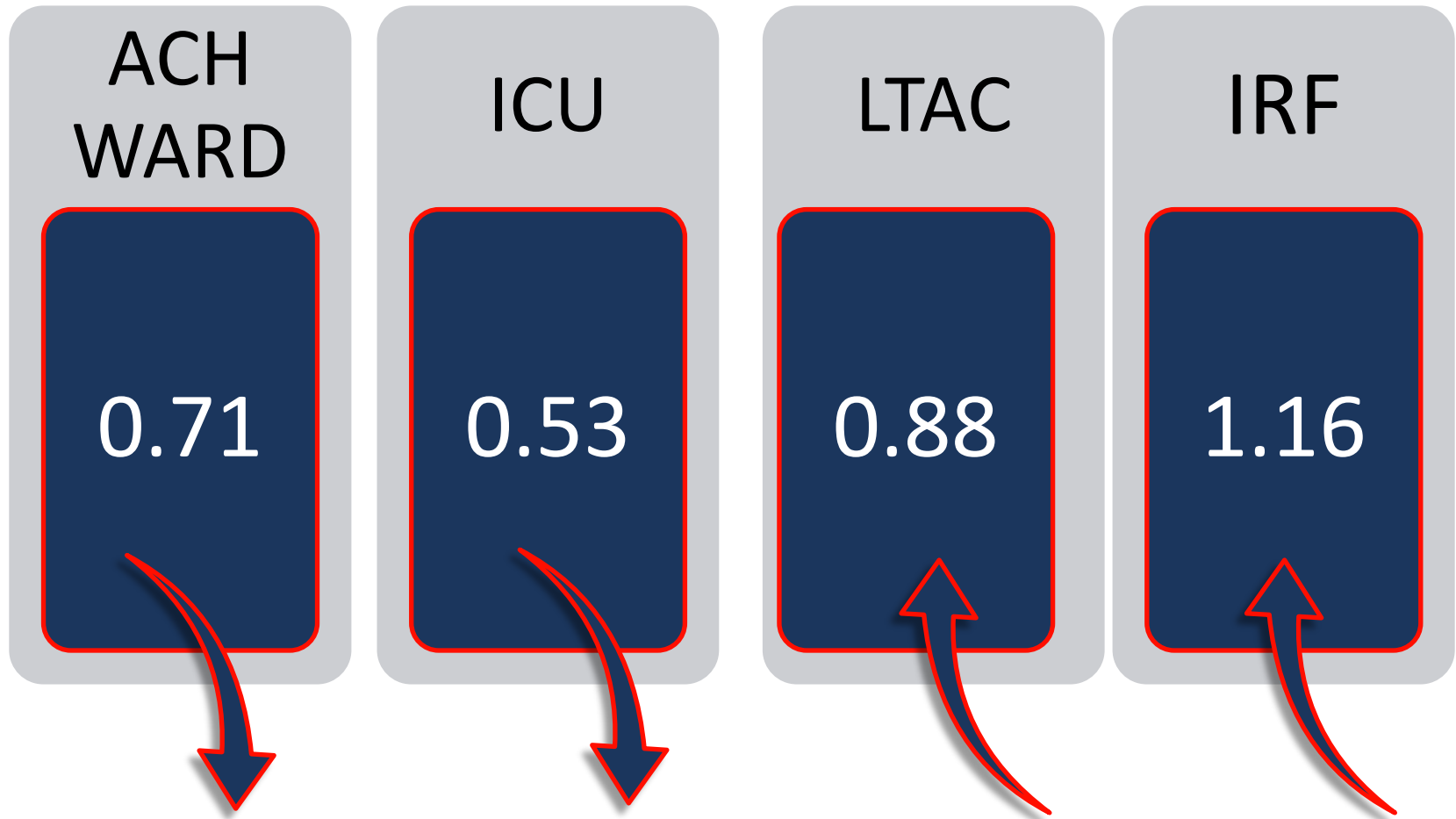
Annual Review: CAUTI

Abigail Marrero, MPH, CPH | Tennessee Department of Health | Communicable and Environmental
Diseases and Emergency Preparedness

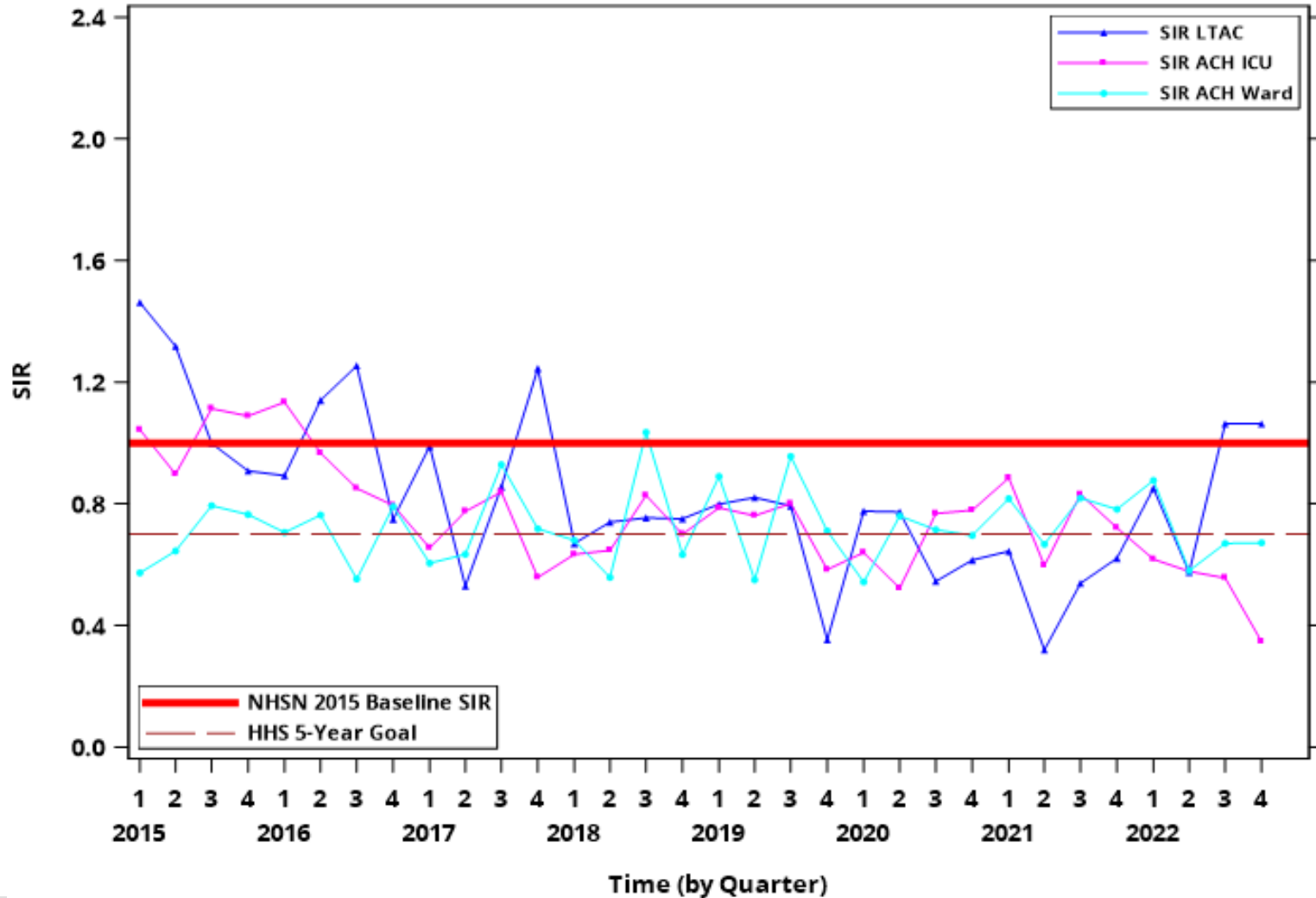
Background

- **Catheter-associated UTI Events from January 1 – December 31, 2022**
- **Data reported as of May 2023**
- **Total # of facilities:**
 - ACH Ward– 92
 - ICUs – 79
 - LTACs – 9
 - IRFs - 27
- **Device days:**
 - ACH Ward– 228,992
 - ICUs – 270,948
 - LTACs – 23,838
 - IRFs – 16,162

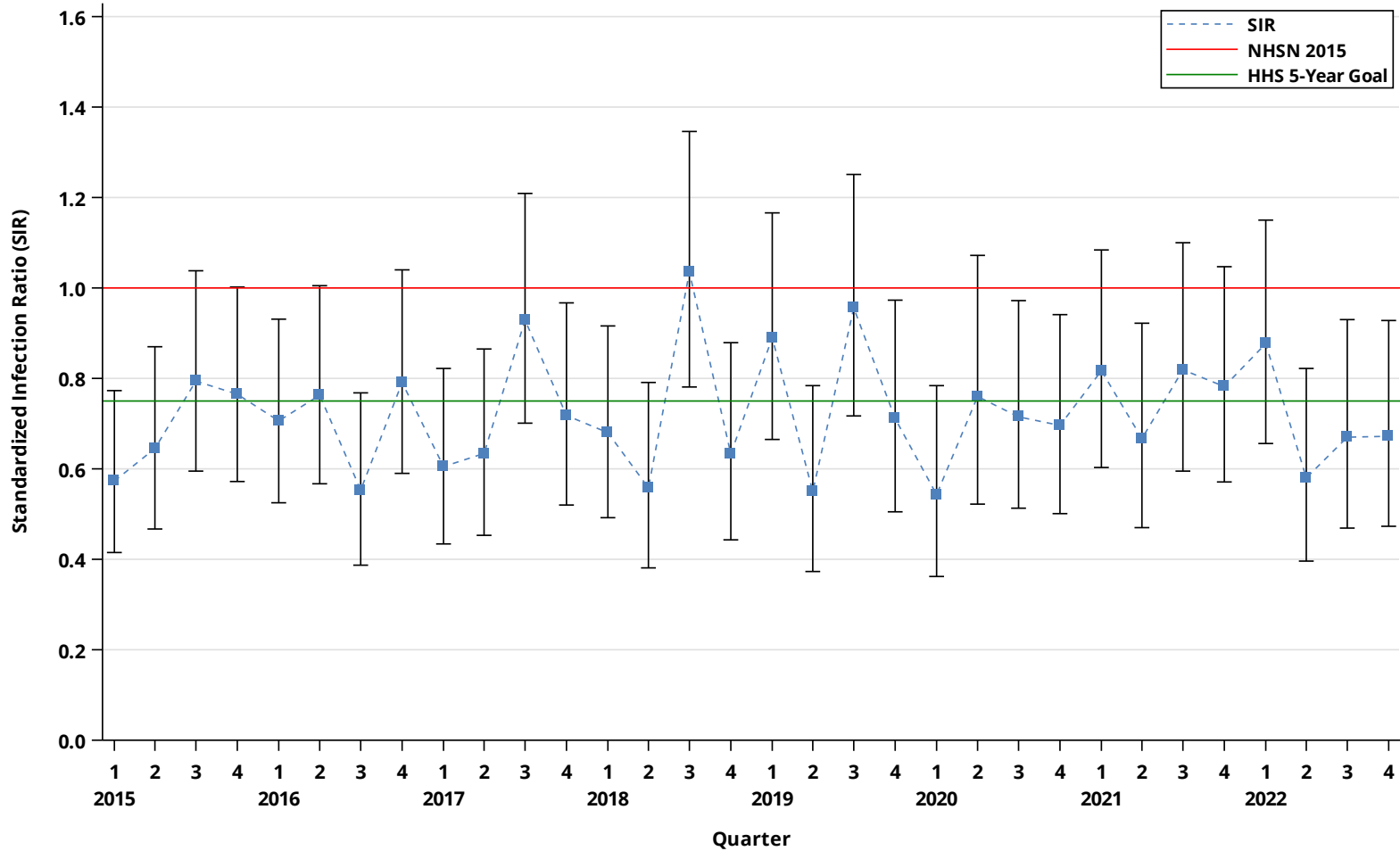
SIRs by Facility Type



SIRs by Facility Type



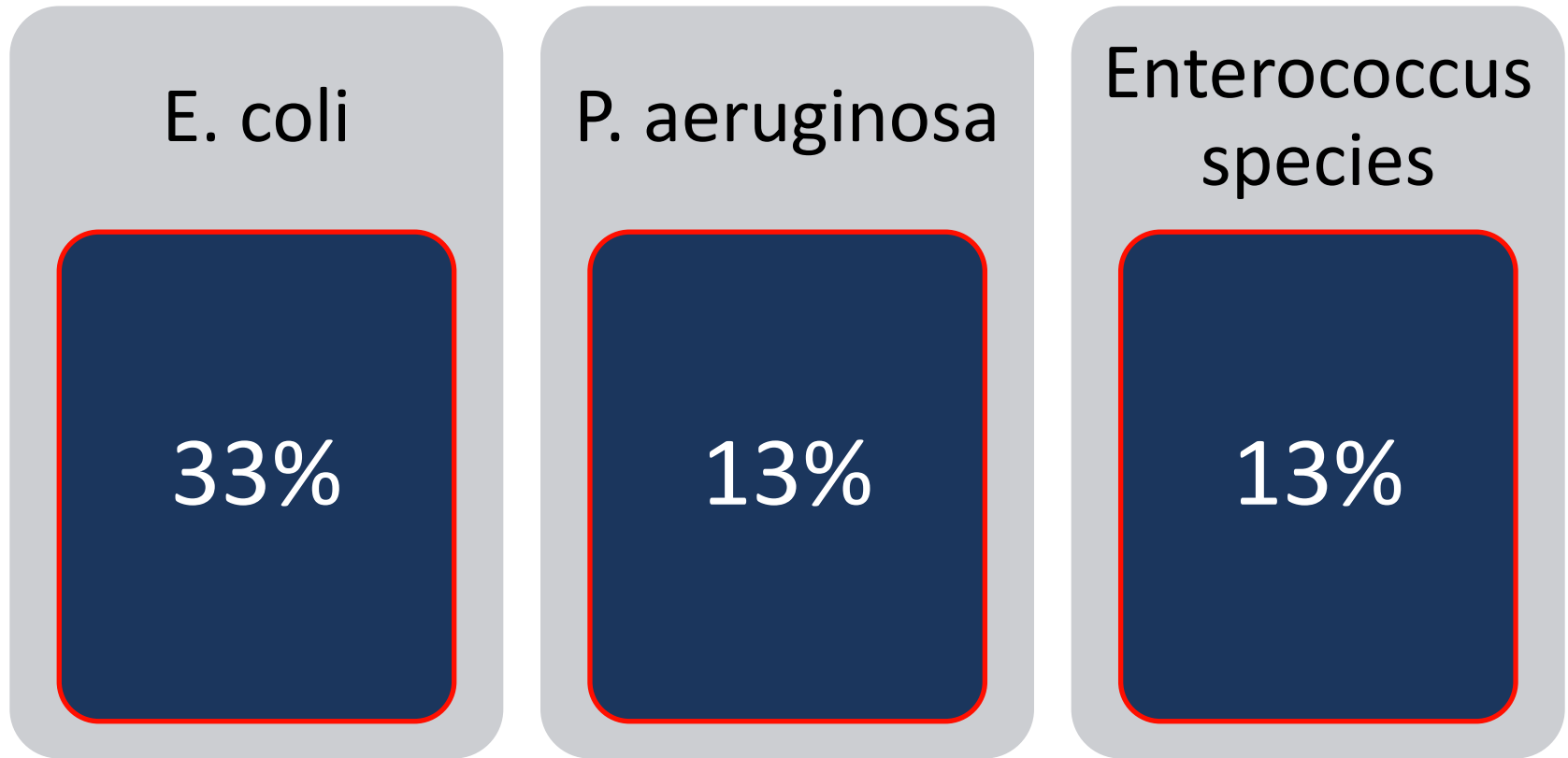
SIRs for ACH WARDs by Quarter



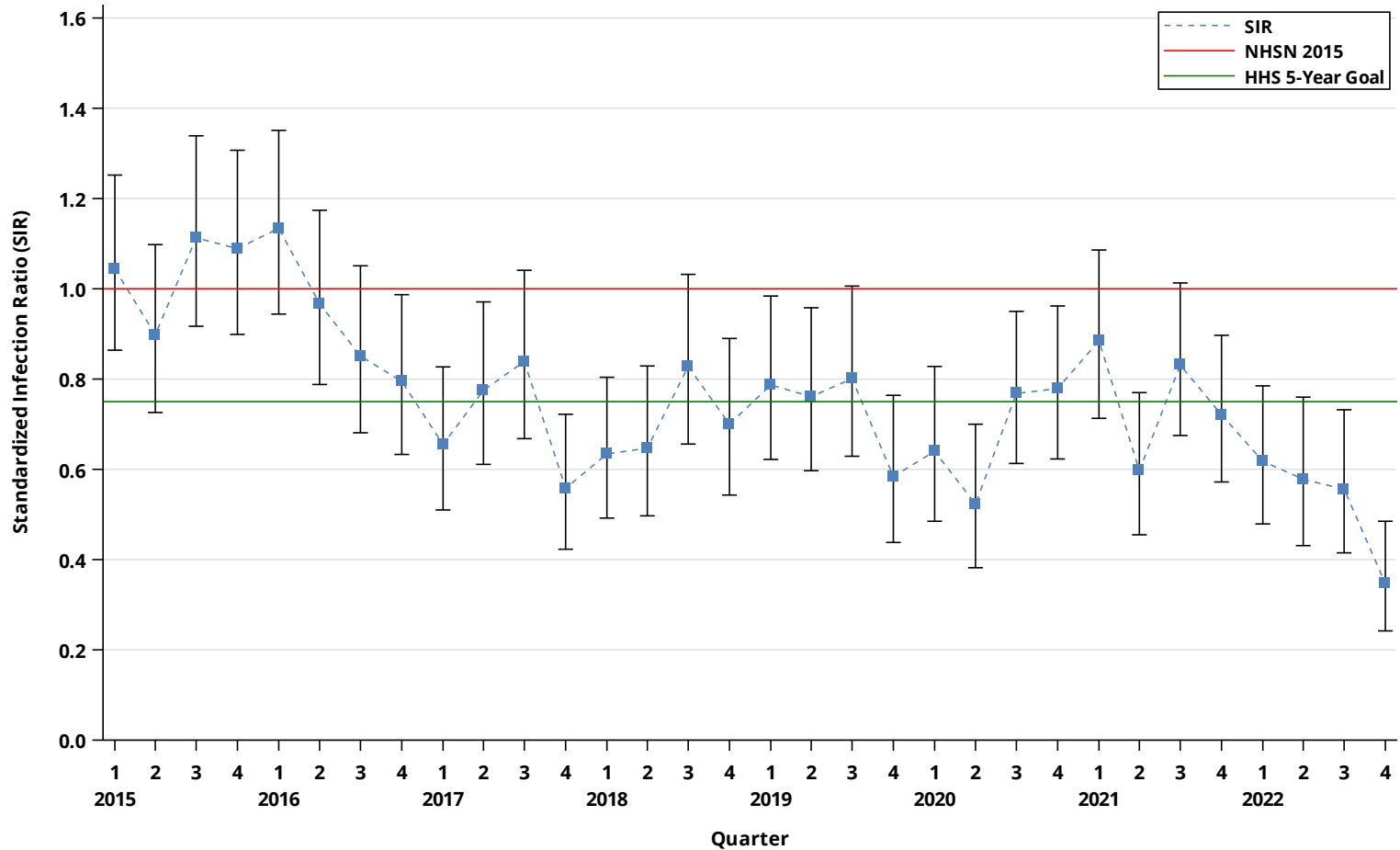
Data Reported as of May 17, 2023

ACH WARD CAUTI Microorganisms

- **Out of 152 isolates**



SIRs for ICUs by Quarter



Data Reported as of May 17, 2023

ICU CAUTI Microorganisms

- **Out of 200 isolates**

E. coli

35%

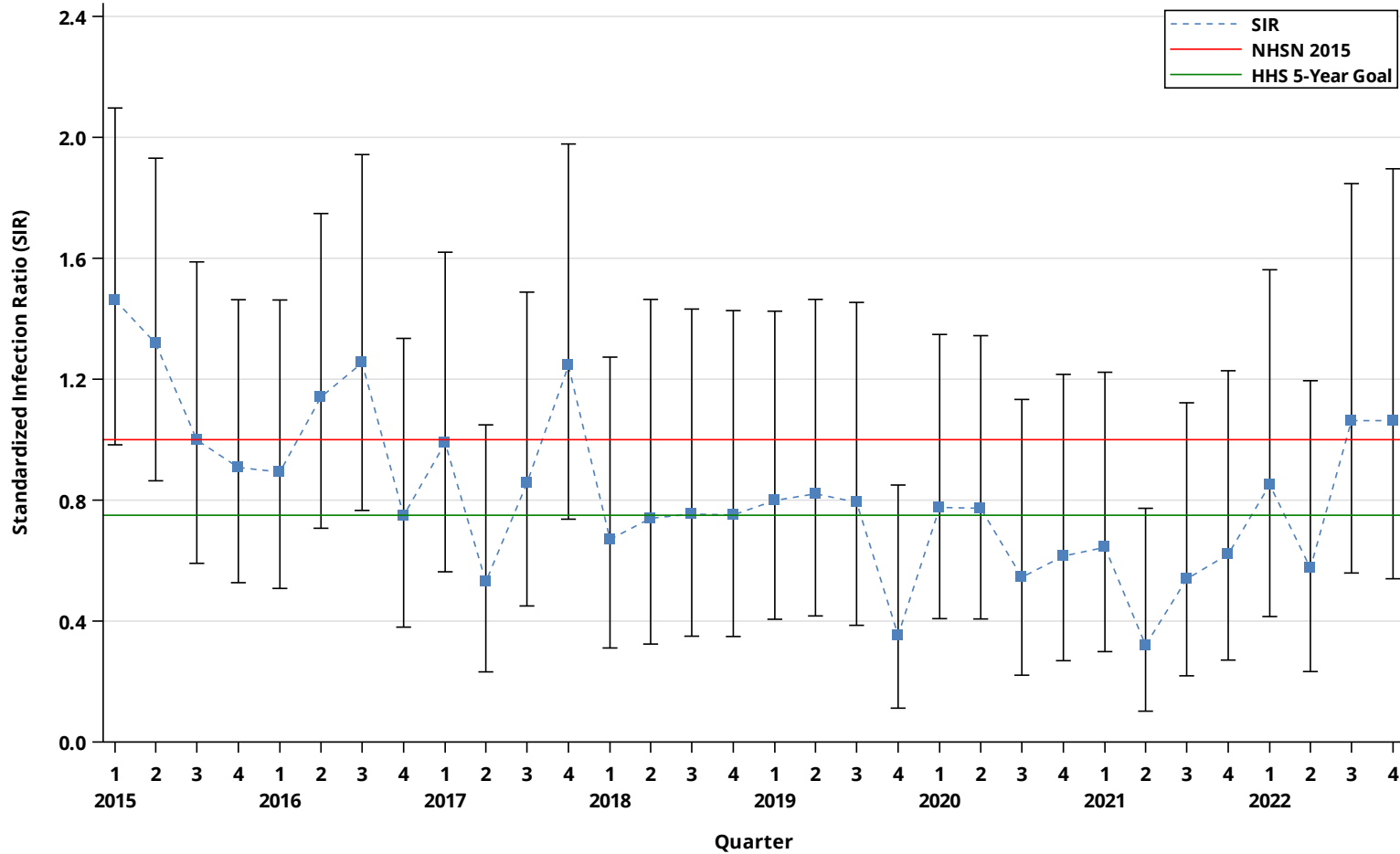
Enterococcus
species

19%

P. aeruginosa

15%

SIRs for LTACs by Quarter



Data Reported as of May 17, 2023

LTAC CAUTI Microorganisms

- **Out of 40 isolates**

E. coli

28%

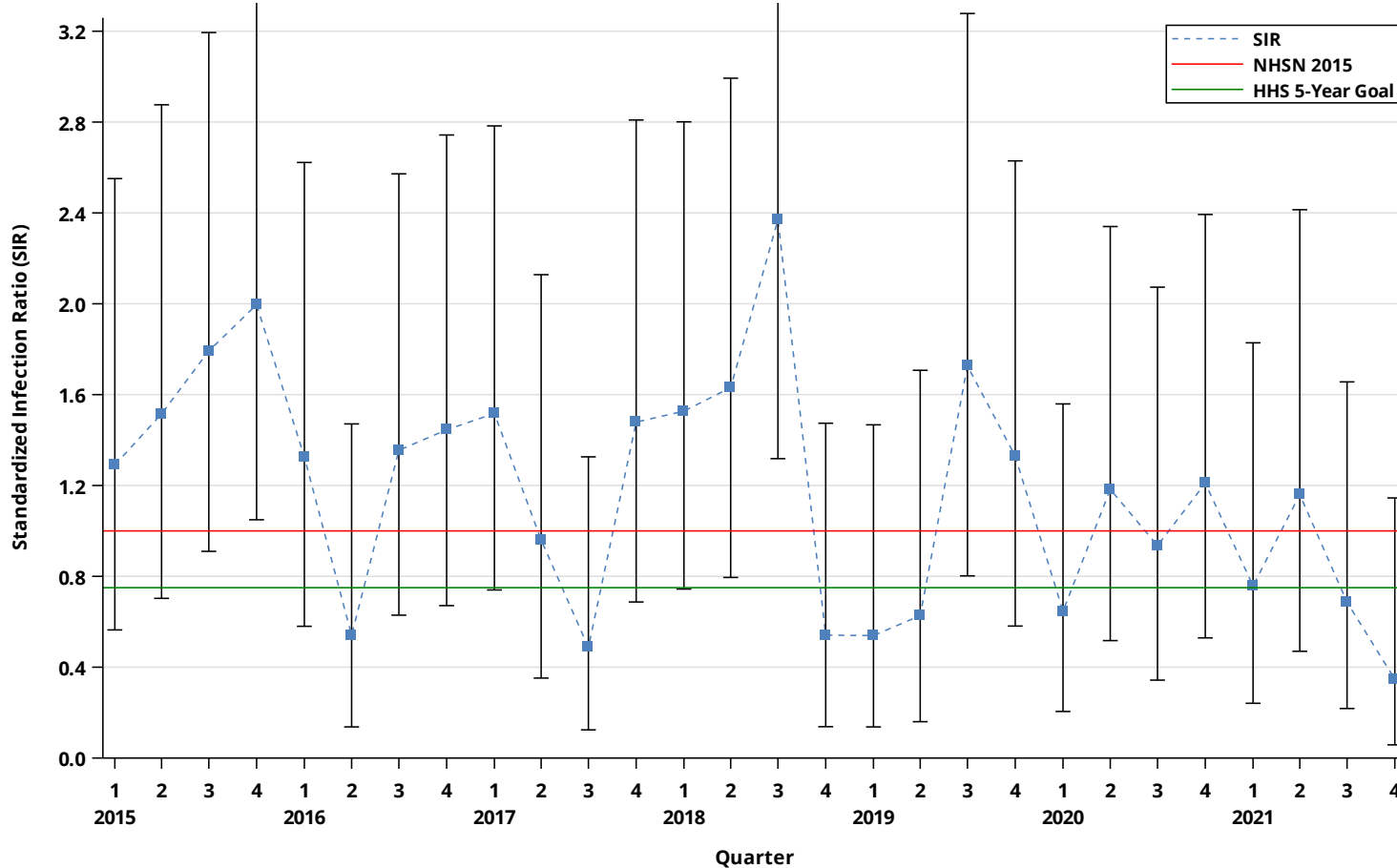
P. aeruginosa

23%

Enterococcus
species

13%

SIRs for IRFs by Quarter



Data Reported as of May 18, 2022

IRF CAUTI Microorganisms

- **Out of 30 isolates**

E. coli

30%

Klebsiella
species

17%

P. aeruginosa

17%



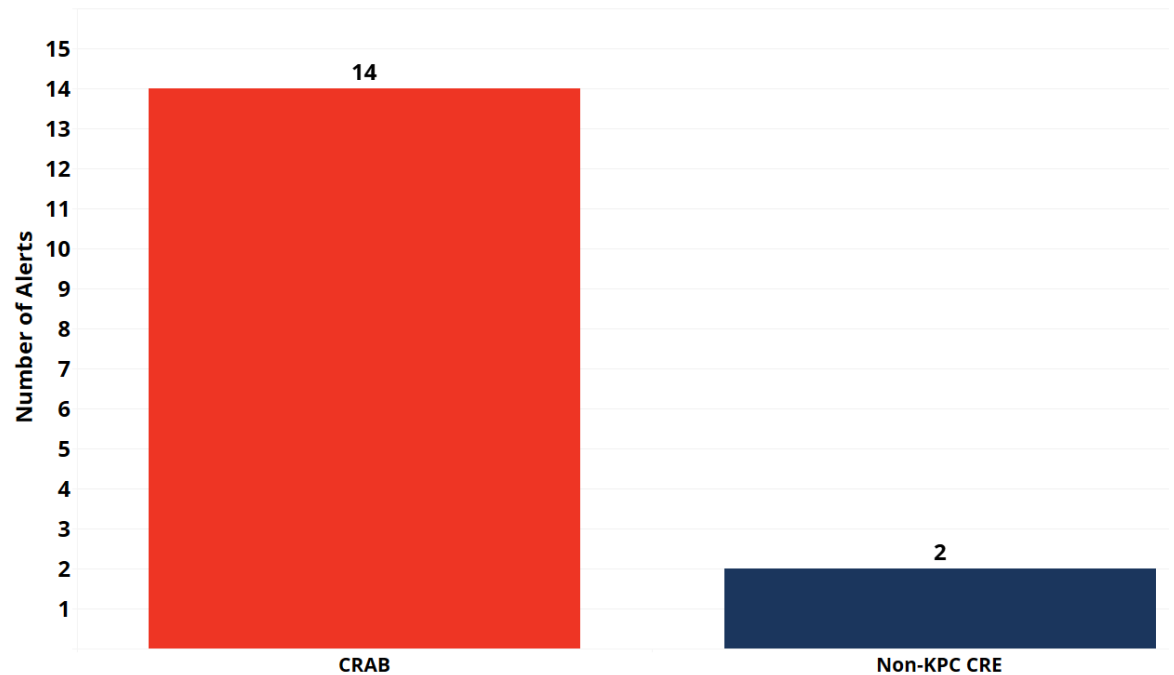
Multi-Drug Resistant Organism (MDRO) Outbreak Team Update

September 14th – October 13th, 2023

MDRO Alerts

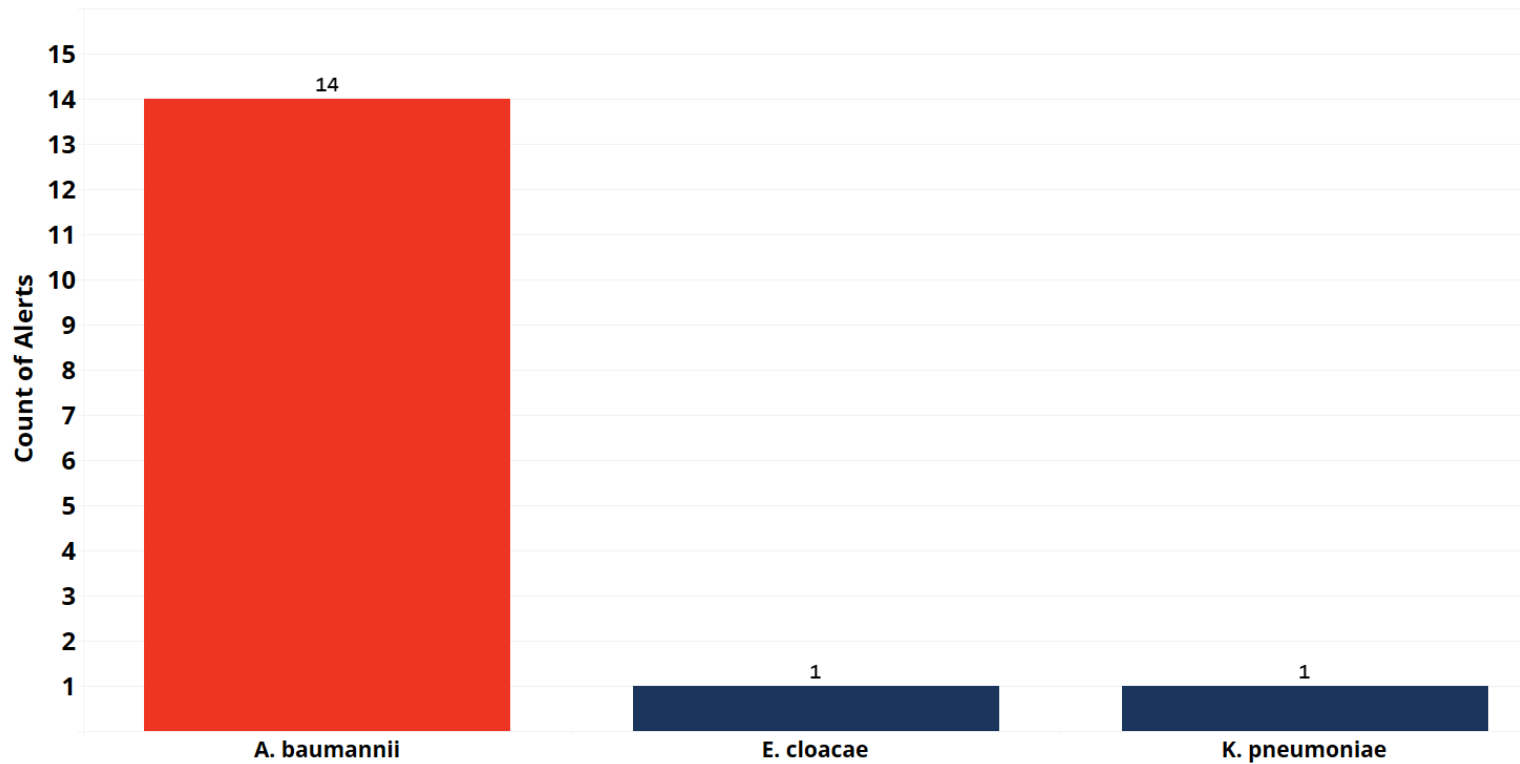
- **CRAB** – Carbapenem-resistant *Acinetobacter baumannii*
- **CRE** - Carbapenem-resistant *Enterobacterales*
- **CRPA** – Carbapenem-resistant *Pseudomonas aeruginosa*
- **KPC** – *Klebsiella pneumoniae* Carbapenemase-producing

MDRO Alerts by Organism Order
(September 14th - October 13th)



MDRO Alert by Organism

Alerts by Organism
(September 14th - October 13th)



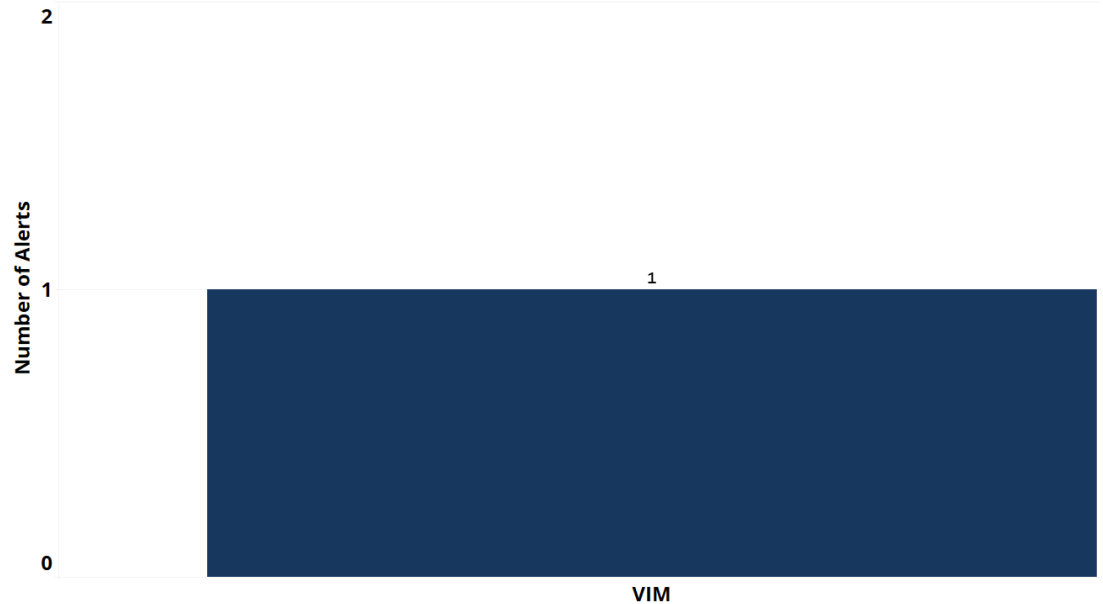
Non-KPC CRE Genes

- **Carbapenemase-producing genes:**

- “Big Five”

- KPC
- IMP
- NDM
- OXA-48
- VIM

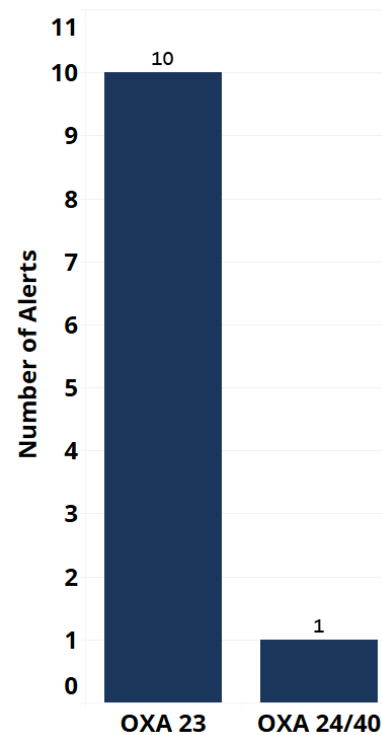
MDRO Alerts by Resistance Gene
(September 14th- October 13th)



CRAB Alerts

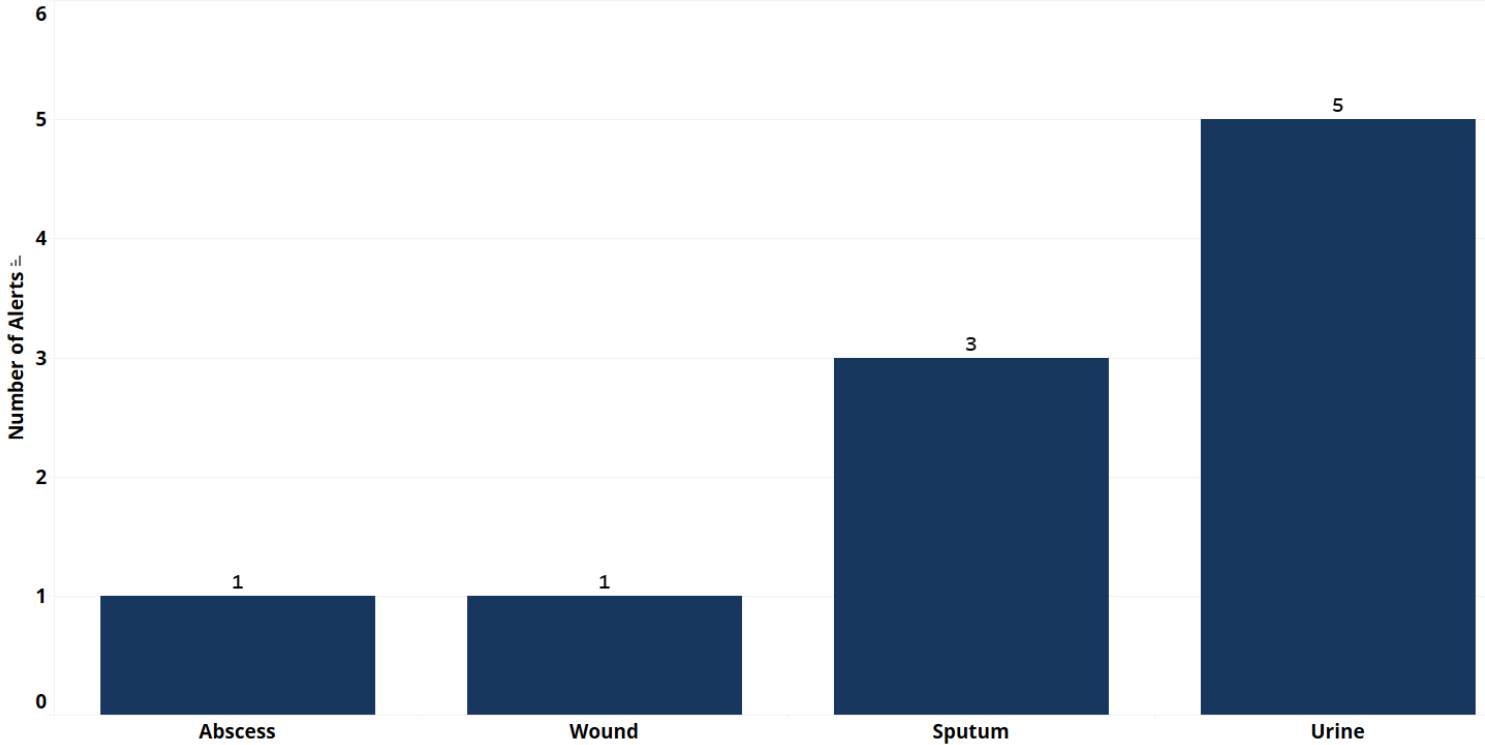
- **Carbapenemase-producing genes:**
 - **Other Oxacillinases**
 - OXA-24/40
 - OXA-23

CRAB Isolates
(September 14th - October 13th)



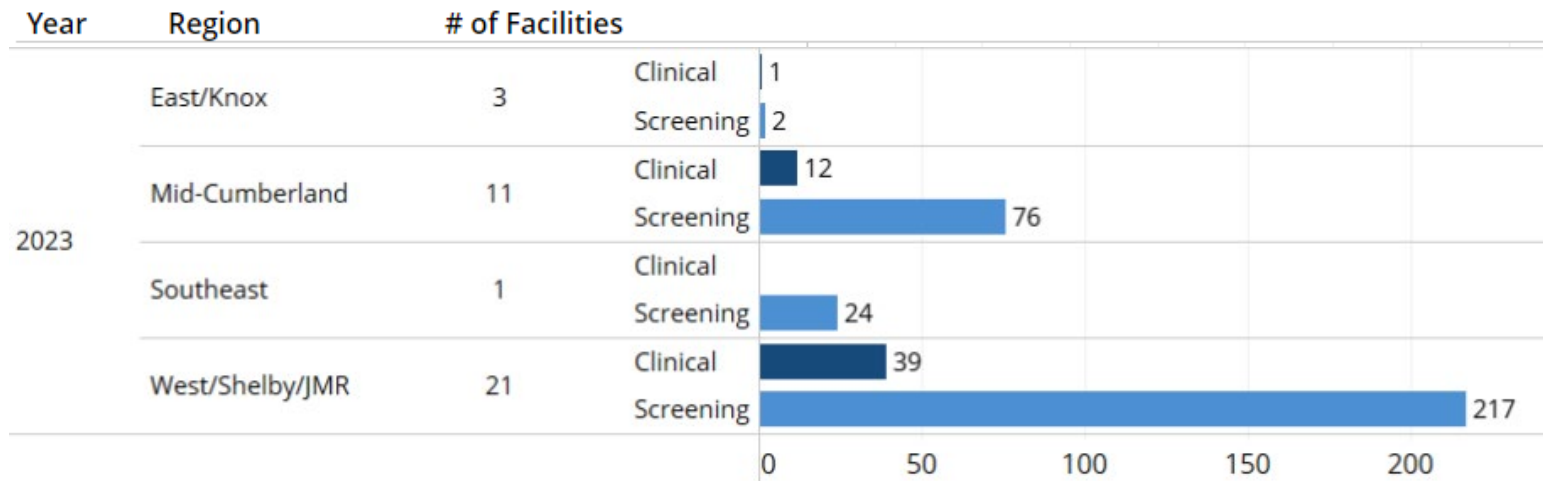
Specimen Sources

Alerts by Specimen Source
(September 14th - October 13th)



2023 *C. auris* Cases

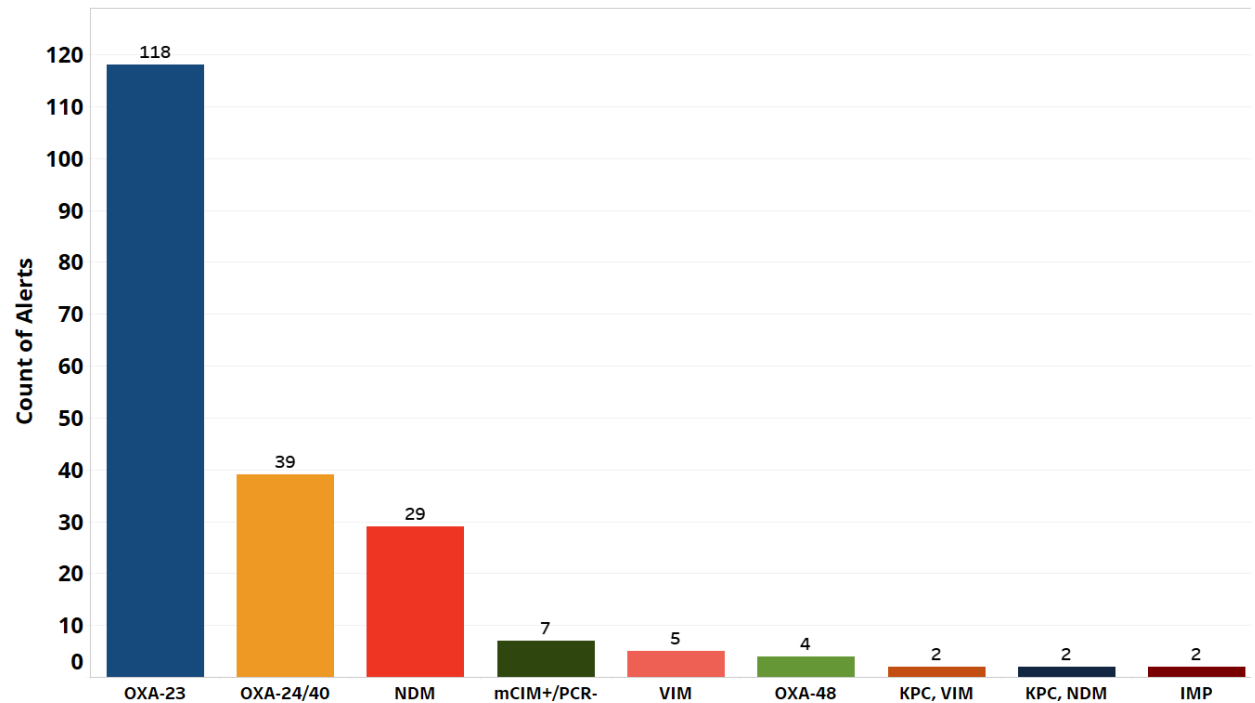
Screening vs Clinical *Candida auris* Cases by Region



TN MDRO Alerts for 2023

- **157 CRAB specimens**
 - 118 OXA-23
 - 39 OXA-24/40
- **51 non-KPC CRE**
 - 29 NDM
 - 7 mCIM+/PCR-
 - 5 VIM
 - 4 OXA-48
 - 2 KPC, VIM
 - 2 KPC, NDM
 - 2 IMP
- ***C. auris***
 - 52 Clinical cases
 - 319 Screening cases

MDRO Alerts in 2023, by Gene (As of October 13, 2023)



Next NHSN User Call

- **Monday, November 20, 2023**
 - **10am CT / 11am ET**
- **NHSN Related**
 - Vicky.Lindsey@tn.gov
 - Abigail.Marrero@tn.gov
- **AU/AR Module**
 - Christopher.Evans@tn.gov
- **Infection Prevention**
 - HAI.Health@tn.gov