

## Sentinel Provider Influenza-Like Illness (ILI) Surveillance Summary For the Week of August 23-29, 2009 (Week 34)

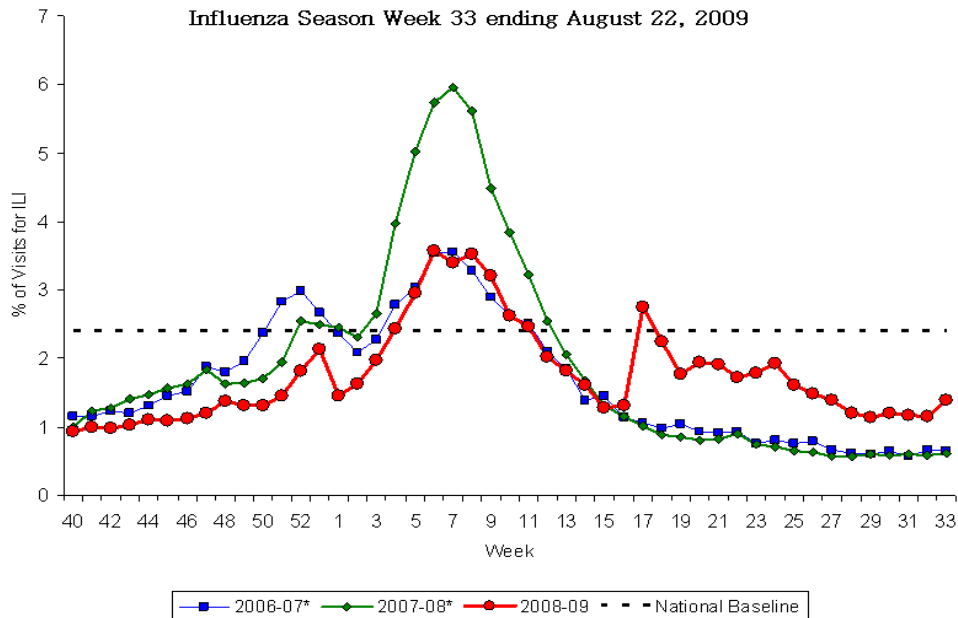
Summary for	# Providers reporting	Total Providers	Total Regional ILI	Total Regional Patients	% ILI	Comparison to State*
Chattanooga-Hamilton County	2	4	1	569	0.2%	lower
East Tennessee Region	5	7	40	3760	1.1%	lower
Jackson-Madison County	1	1	37	1131	3.3%	
Knoxville-Knox County	3	5	110	994	11.1%	higher
Mid-Cumberland Region	11	10	33	1329	2.5%	
Memphis-Shelby County	1	3	0	75	0.0%	
Nashville-Davidson County	4	5	86	1444	6.0%	higher
Northeast Region	2	3	0	592	0.0%	lower
South Central Region	3	3	0	286	0.0%	lower
Southeast Region	4	5	16	895	1.8%	
Sullivan County	2	2	2	354	0.6%	lower
Upper Cumberland Region	5	5	8	693	1.2%	lower
West Tennessee Region	6	6	6	594	1.0%	lower
State of Tennessee	49	59	339	12716	2.67%	

***The percentage of patients with ILI reported by the TN SPN was 2.67% for Week 34 - a significant increase over week 32. In Week 34, 60% (191 of 320) of specimens submitted were PCR positive for influenza. Of the positives, 96% were pandemic H1N1. Sentinel providers should review the new SPN Protocol (eff. Sept 1, 2009): ILI reports must be submitted by the end of Tuesday (was Monday) following the end of the reporting week; specimens should be collected and shipped to the lab on Mondays and/or Wednesdays (with a maximum 10/wk). Sentinel providers should contact regional SPN coordinators with questions. Visit [www.cdc.gov/h1n1flu](http://www.cdc.gov/h1n1flu) for the most current pandemic information.***

The CDC reports that the percentage of patients visiting outpatient healthcare providers in the Sentinel Provider Network (SPN) with influenza-like-illness (ILI) when influenza viruses are not circulating is expected to fall at or below a specific SPN baseline [nationwide = 2.2%, East South Central region (AL, TN, MS, KY) = 2.4%]. When the percentage of patients with ILI exceeds this baseline, this suggests that influenza viruses may be circulating.

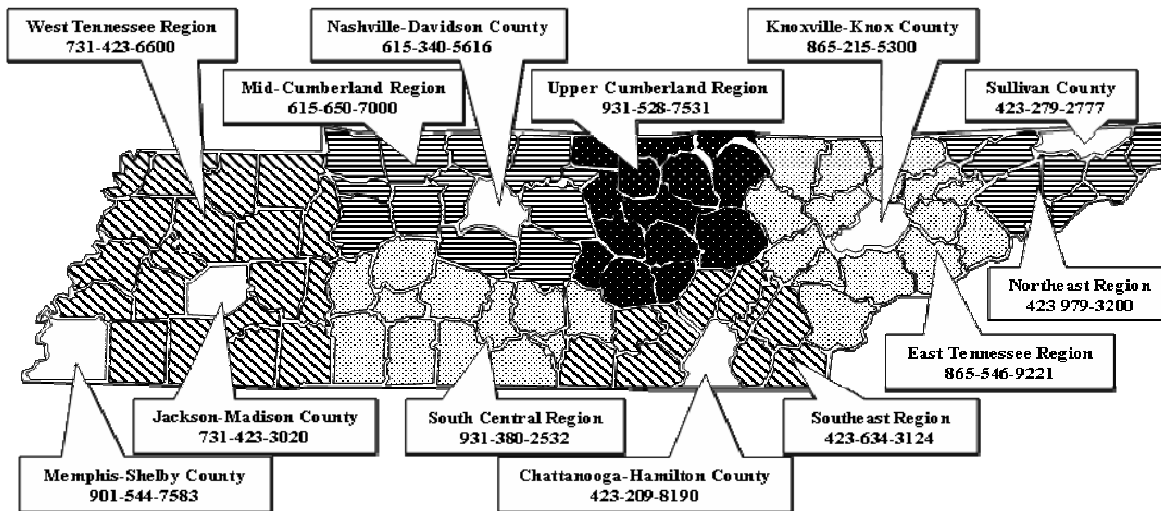
\*The percentage of influenza-like-illness patients seen in each region is compared to the statewide average. Regions with percentages statistically-significantly different from the state average are noted as "higher" or "lower."

Percentage of Visits for Influenza-like Illness (ILI) Reported by the US Outpatient Influenza-like Illness Surveillance Network (ILINet), National Summary 2008-09 and Previous Two Seasons



\*There was no week 53 during the 2006-07 and 2007-08 seasons, therefore the week 53 data point for those seasons is an average of weeks 52 and 1.

**TENNESSEE SENTINEL PROVIDER NETWORK**



State Public Health Laboratory

Influenza PCR - specimens from all sources

Month 2009	Report Week	Number Received	Seasonal A	Pandemic A
June	25	29	2	15
	26	35	2	24
July	27	44	2	18
	28	47	1	13
	29	78	2	39
	30	67	4	31
Aug.	31	86	0	44
	32	83	6	40
	33	264	7	63
	34	320	8	183
Sept.	35			
	36			

The state public health laboratory is PCR testing for seasonal types A and B influenza and the 2009 pandemic type A (H1N1). This table shows all specimens submitted (not only those from the SPN). The Department's policy for testing for H1N1 is available at <http://health.state.tn.us/H1N1.htm#hcp>.

Sentinel Providers should submit specimens using the SPN Influenza Submission form dated 8/21/2009. The revised SPN protocol was distributed 9/1/2009.

**Important Information for Sentinel Providers**

**Pandemic influenza:** [www.cdc.gov](http://www.cdc.gov) or <http://health.state.tn.us/H1N1.htm>

**SPN Providers only - submit weekly reports to:**

[www.ncid.cdc.gov/flu/](http://www.ncid.cdc.gov/flu/) or Fax 888-232-1322

**State Lab:**

• Jerry Hindman or Susan McCool  
615-262-6351 or 6374

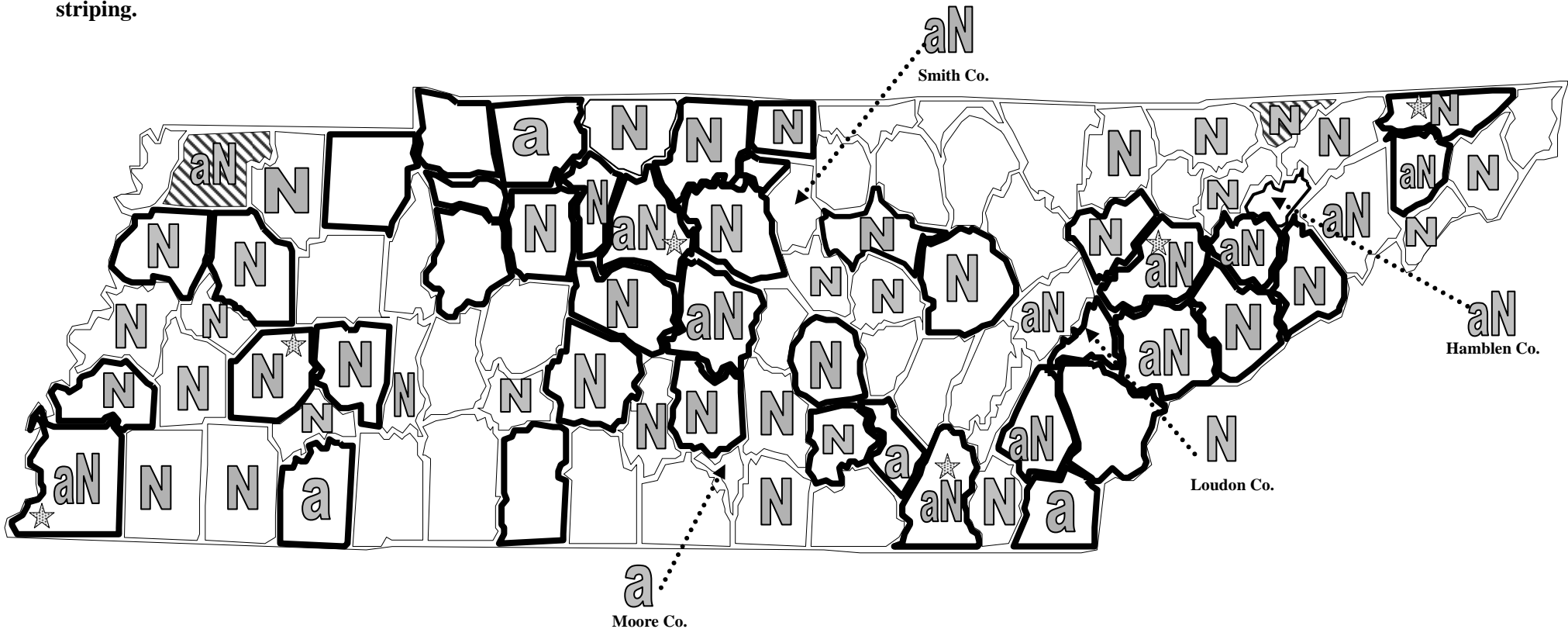
**SPN Questions:**

• Regional SPN Coordinator (see map)  
• Robb Garman or Robert Taylor  
800-404-3006 or 615-741-7247

Influenza confirmed by culture or PCR in Tennessee from specimens collected by any source within the past 8 weeks.

July 5, 2009 to August 30, 2009

- Strains are reported by county of case residence or, if unknown, county where the specimen was collected.
- Counties where influenza sentinel providers are located are identified with bold boundary lines.
- Stars marks counties with large metropolitan populations (Memphis, Jackson, Nashville, Chattanooga, Knoxville, and the Tri-Cities area)
- Novel 2009 H1N1 results are for confirmed cases identified by PCR testing; counties with their first case identified this week are indicated by diagonal striping.



	A (H1)		A (H3)		A (no subtype)
	B		A(H1), A (H3) & B		Novel 2009 A (H1N1)
	1st Novel 2009 A (H1N1) this week				