



**TENNESSEE**  
STATE BOARD OF EDUCATION

# **EDUCATOR LICENSURE AND PREPARATION SUBCOMMITTEE**

---

SBE MEMBERS: DARRELL COBBINS, BOB EBY, MIKE EDWARDS, AND LILLIAN HARTGROVE (CHAIR)

APRIL 16, 2019

The logo consists of a red square containing the white letters 'TN' in a bold, serif font. Below the red square is a dark blue horizontal bar.

**TN**

# Praxis Standard Setting Study Process

®

# Praxis and Multi-state Standard Setting Study Panels

- Example: Mathematics Content Knowledge (5161)
  - 60 items
  - *Number and Quantity, Algebra, Functions, and Calculus* (approximately 41 items)
  - *Geometry, Probability and Statistics, and Discrete Mathematics* (approximately 19 items)
- Panelists recommended by 24 state education agencies
  - Research staff from ETS
  - 2013: 35 panelists
  - Math teachers, college faculty, other expertise

# Praxis and Multi-state Standard Setting Study Panels

- Panel 1: Recommended (33.1) 34 out of 50 on raw-score points (165)
- Panel 2: Recommended (29.81) 30 out of 50 on raw-score points (155)
- Final recommendation: 160

# Standard Setting Study Process

- Step 1: Panelists take the assessment
- Step 2: Define a “just qualified candidate” (JQC)
  - Panelists review knowledge and skill statements and define the profile of what a JQC for this position should know; this is a ½ day process
- Step 3: Independent judgment process
  - Determine the probability that the JQC would get the question correct

# Standard Setting Study Process

- Step 4: Panel judgement process
  - Repeat previous step with group discussion regarding each question; final judgments recorded
- Step 5: Raw score calculation
  - Panel judgements are included in algorithm that calculates the minimum raw score a JQC would get
- Step 6: Scale score conversion (100-200 scale)

# Example

| Question | Panelist #1 | Panelist #2 | Panelist #3 | Average            |
|----------|-------------|-------------|-------------|--------------------|
| 1        | .50         | .70         | .40         | .53                |
| 2        | .95         | .95         | .95         | .95                |
| 3        | .50         | .50         | .50         | .50                |
| 4        | .80         | .95         | .70         | .82                |
| 5        | .20         | .40         | .20         | .27                |
|          |             |             |             | 3.07               |
|          |             |             |             | Raw Score =<br>3/5 |

The logo consists of a red square containing the white letters 'TN' in a bold, serif font. Below the red square is a dark blue horizontal bar.

**TN**

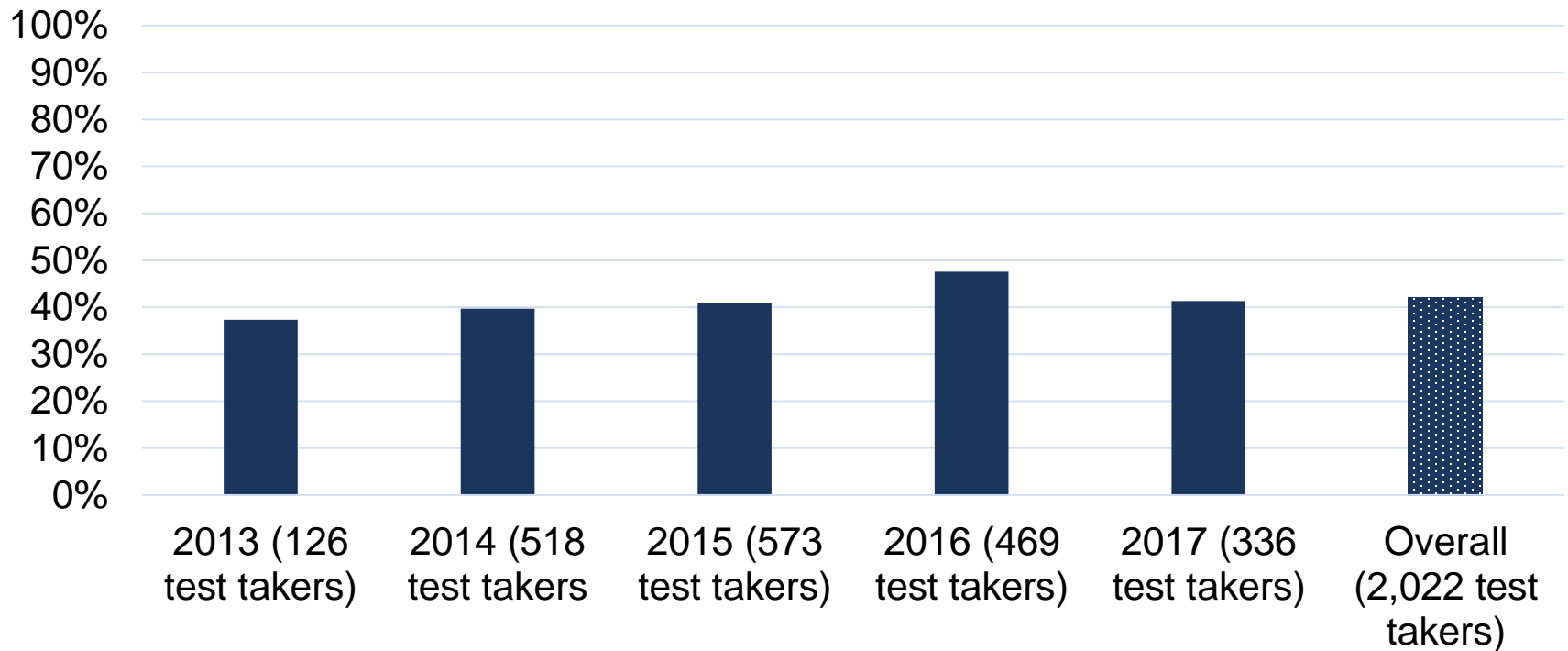
**Praxis: Mathematics  
Content Knowledge**

®



# Mathematics: Content Knowledge Pass Rates

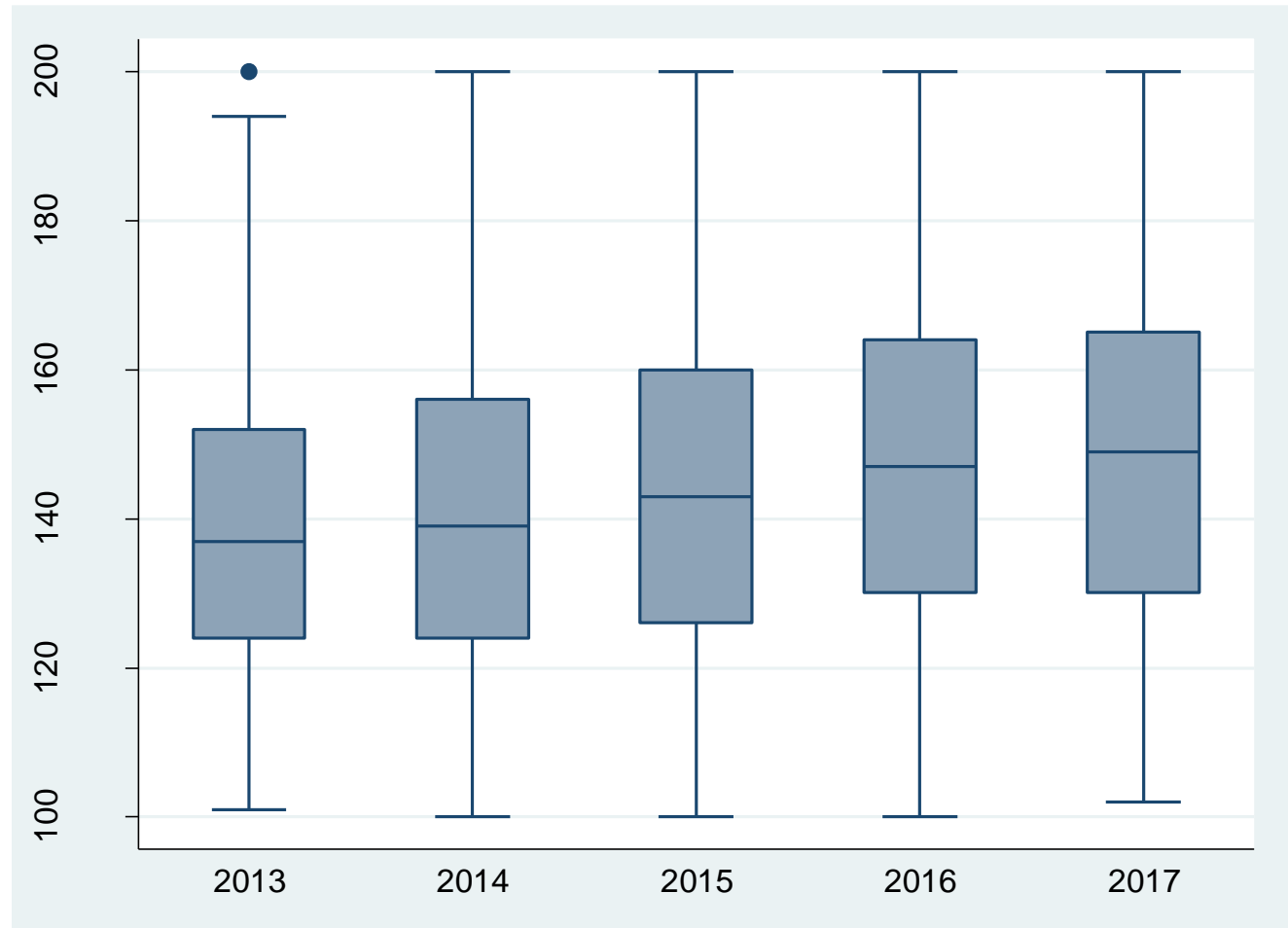
Pass Rate on First Attempt: Mathematics Content Knowledge Praxis



# Score Distribution – First Attempt

**First Attempts**  
2013–2017

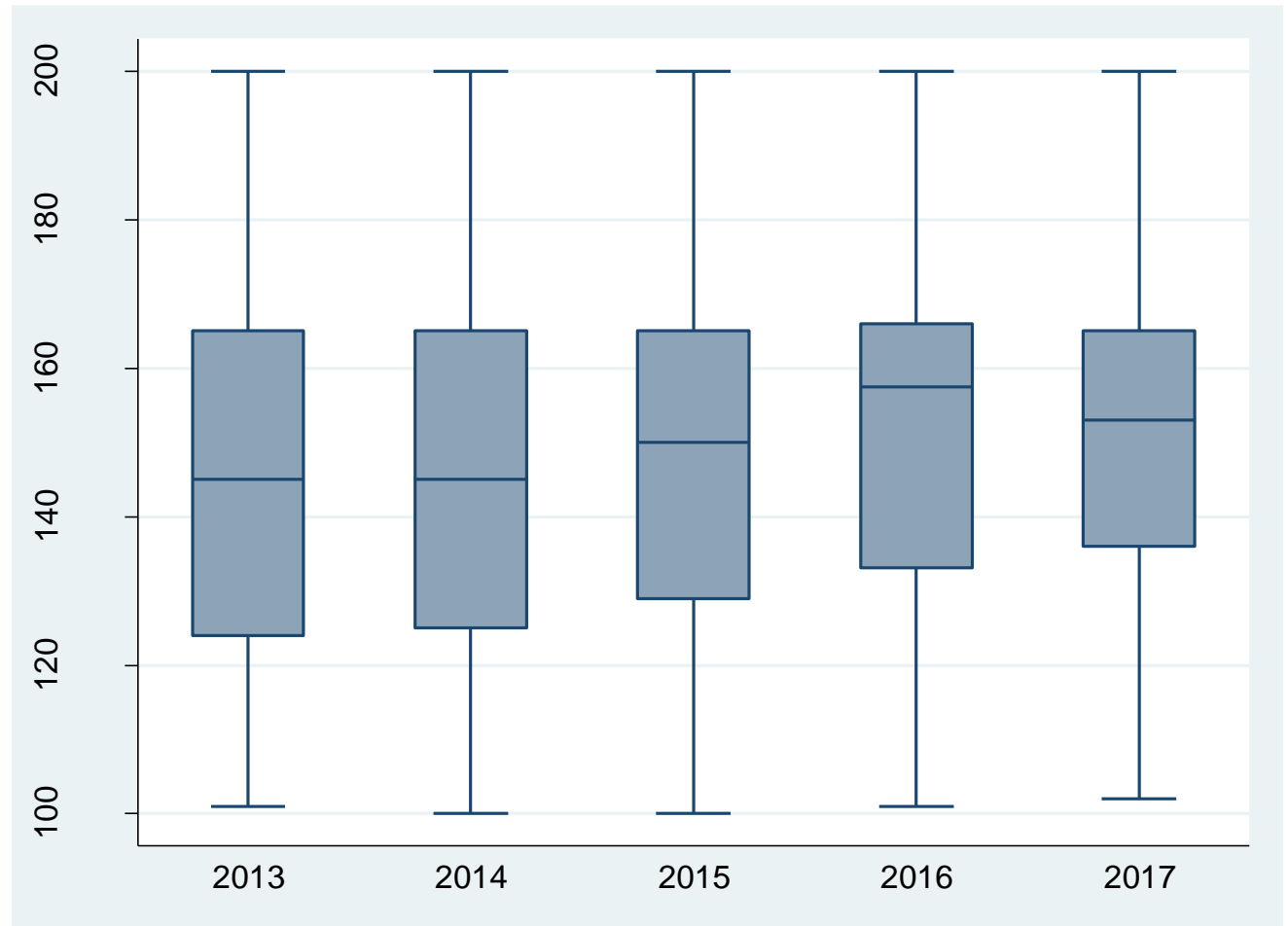
2,022 test takers



# Score Distribution – Best Attempt

**Best Score**  
2013–2017

2,022 test  
takers

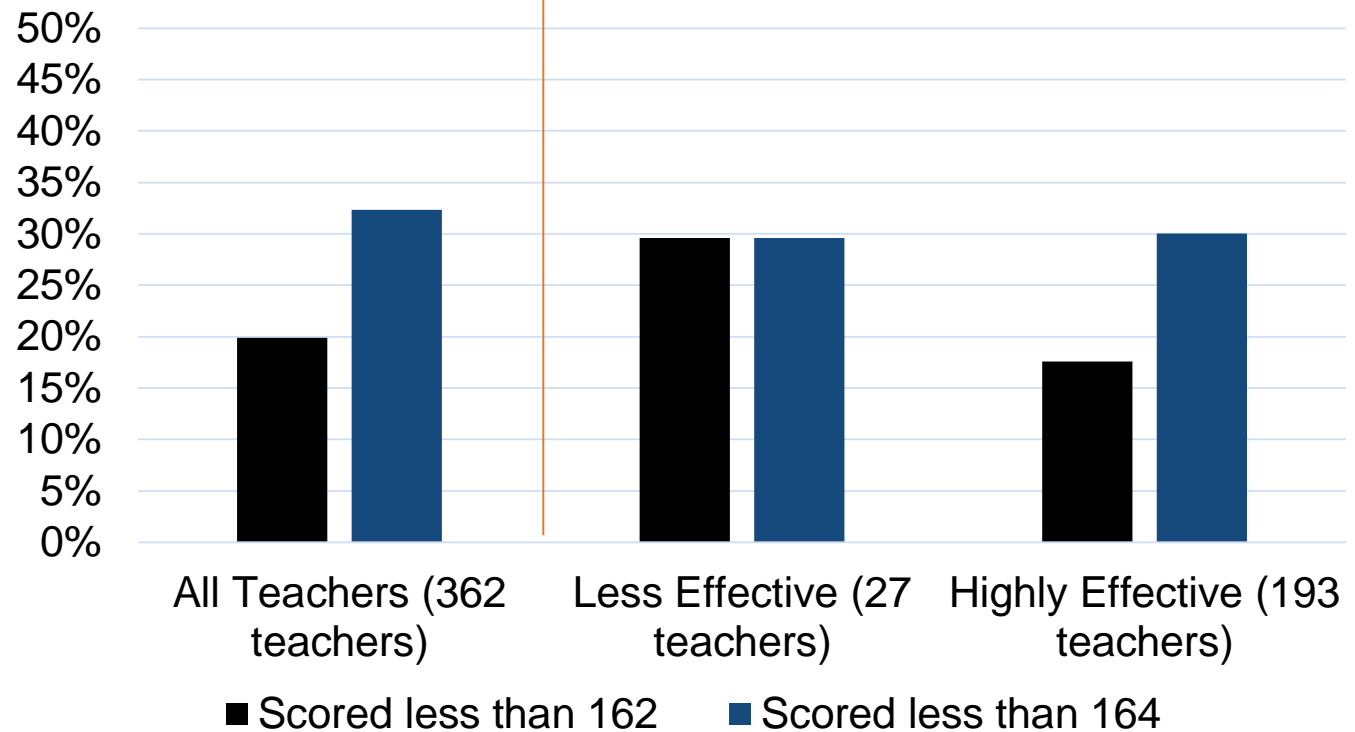


# Potential Impact of Raising Cut Score - LOE

Tested 2013–2017  
Teaching 2017-18:

- All: **362**
- Less Effective: **27**
- Highly Effective: **193**

Failure Rates at Each Potential Cut Score  
Based on LOE: Percentages within groups

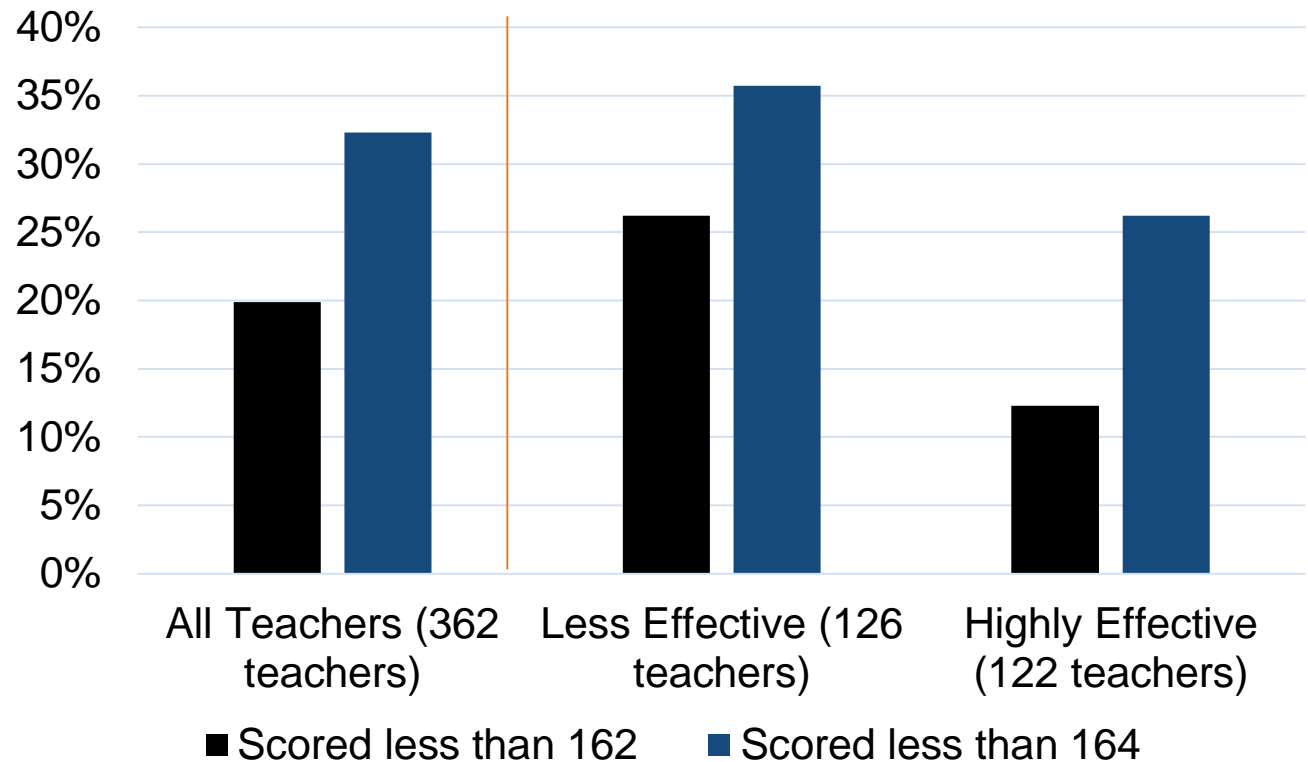


# Potential Impact of Raising Cut Score - TVAAS

Tested 2013–2017  
Teaching 2017-18:

- All: **362**
- Less Effective: **72**
- Highly Effective: **117**

Failure Rates at Each Potential Cut Score  
Based on TVAAS: Percentages within groups

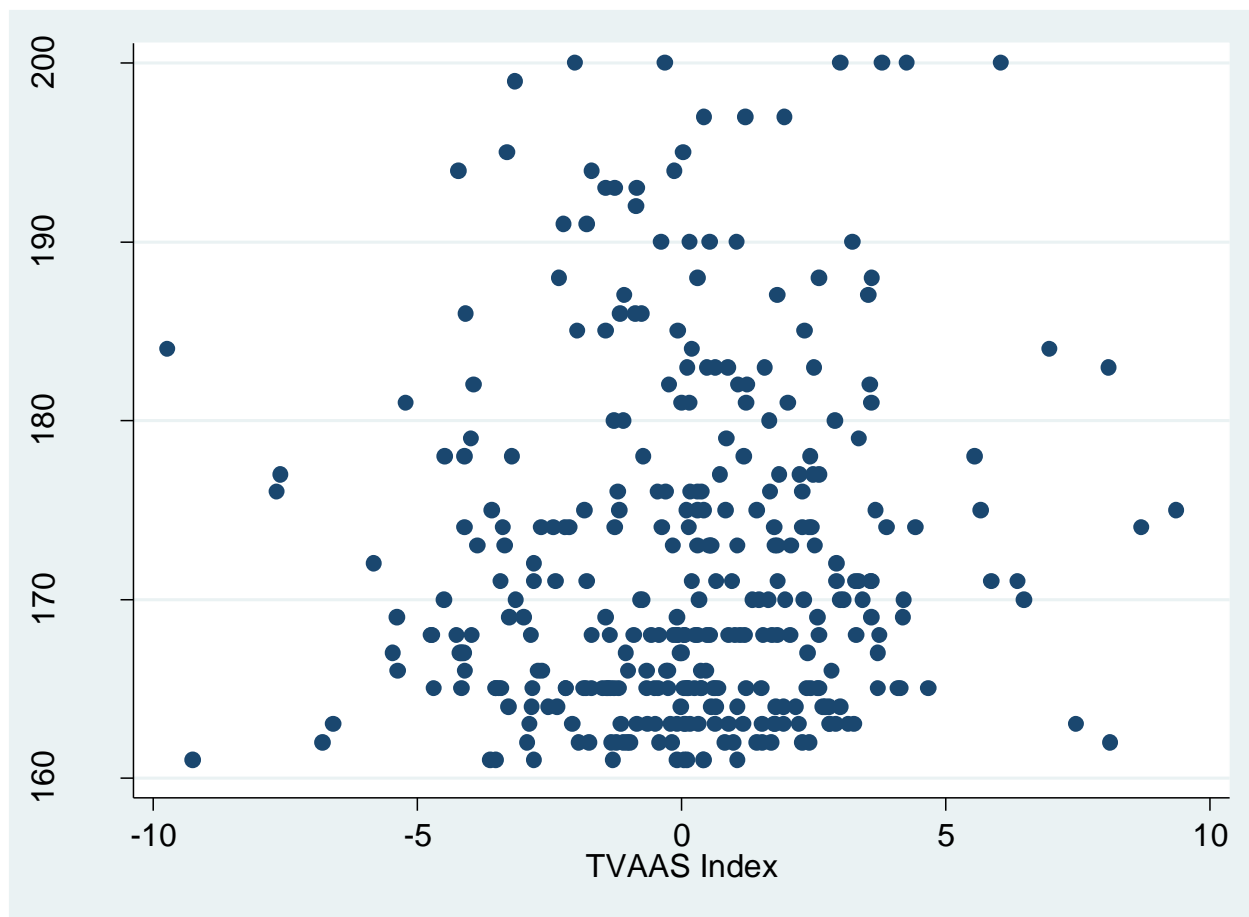


# Math Content Knowledge Performance and TVAAS

Correlation = 0.06

Tested 2013–2017  
Teaching 2017-18:

- 335 Teachers who scored above 160

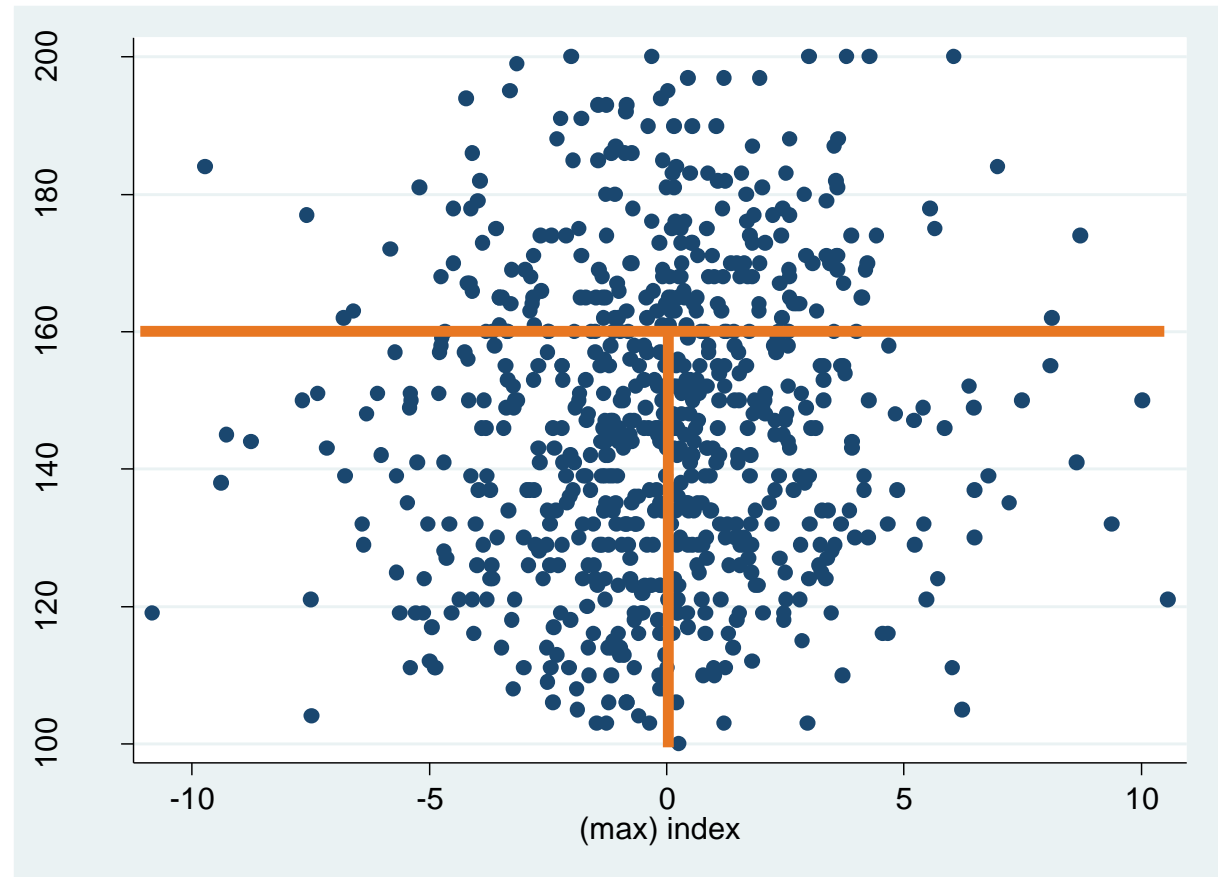


# Math Content Knowledge Performance (first attempt) and TVAAS

Tested 2013–2017  
**Teaching 2017-18:**

- 720 secondary math teachers' first attempts on Math Content Knowledge Praxis

Correlation = 0.07



The logo consists of a red square with the letters 'TN' in white, serif font. Below the red square is a dark blue horizontal bar.

**TN**

**Educator  
Preparation General  
Updates**

®



# Educator Preparation Updates

- Literacy
  - ELA
  - Instructional Leader
  - Non-ELA, pre-K-12, and CTE academic
- Partnerships
  - Short-cycle Primary Partnership Agreements (PPAs) reviewed by the department; comprehensive feedback provided
  - 2019-20 PPAs will be submitted to the department in August.

# Educator Preparation Updates

- Occupational
  - SSC Executive Committee Meeting held on March 26
  - EPPs will submit occupational proposals in early May
  
- Leader Preparation
  - Convening on April 17
  - SLLA test review on April 18
  - Working Group
    - Standards
    - Clinical Practice
    - Partnerships
    - Annual Reports



*Districts and schools in Tennessee will exemplify excellence and equity such that all students are equipped with the knowledge and skills to successfully embark on their chosen path in life.*

**Excellence | Optimism | Judgment | Courage | Teamwork**