



**PRE-BID MEETING
CNV 281
I-65 Widening
From near SR-25 to near SR-109
Robertson County
PIN 124263.04**

Meeting Facilitators

- TDOT Region 3 Project Development
- TDOT HQ Construction
- TDOT HQ Structures

CNV 281 Robertson Co.

- Letting Date: August 20, 2021
- Completion Date: December 31, 2025

ROBERTSON COUNTY (Contract No.CNV281) Call No. 027

Project No. NH-I-65-3(128), 74003-3174-44 (PIN 124263.04)

The grading, drainage, construction of bridges and retaining walls, ITS and paving on I-65 from near S.R. 25 (Main Street) (L.M. 7.46) to near S.R. 109 (L.M. 17.12).

Project Length - 9.660 miles

Completion Time - On or before 12/31/2025 (See Special Provision 108B)

The DBE goal for this contract is 8%.

A+B Contracting Method

- Total Contract (A+B) = A + (Bx Liquidated Damages per Calendar Day)

A = Contract Amount

B = Number of Calendar Days to complete the Work from anticipated effective date of **September 17, 2021** or the actual effective date whichever is later

Liquidated Damages / Calendar Day for milestone work = \$30,000

- Plan to expedite the award of this contract
- Specification Section 108.03C requirements for submission of schedules will be waived for work to begin on Phase 1
- Contractor shall meet the 108.03C by December 15, 2021
 - Work on Phase 1A shall not begin until 108.03C requirement is met

A+B Contracting Method

- Intent to complete Phase 1 work prior to seasonal paving limitations
 - Required maintenance during subsequent phases will be the contractor's responsibility
- Maximum total calendar days for "B" portion = **1567 Days (12/31/25)**
- Minimum total calendar days for "B" portion = **1202 Days (12/31/24)**
- Total contract (A+B) cost used by Dept. to determine apparent low bidder
 - Reimbursement to the Contractor based solely on the Contract Amount "A"

No Excuse Bonus/Disincentive

For the completion and acceptance by the Department of this project, in substantial conformity with the plans, including all punch list and corrective action items, as determined by the Department, before the Project Completion Date included in Part "B" by the Contractor and accepted by the Department, the Department will provide an incentive payment of **\$30,000** for each day, up to a maximum of **180** days, that the project is finished before the completion date.

For the completion and acceptance by the Department of this project, in substantial conformity with the plans, including all punch list and corrective action items, as determined by the Department, after the Project Completion Date included in Part "B" by the Contractor and accepted by the Department, the sum of **\$30,000** per day will be deducted from the contractor as a disincentive.

Lane Closure Restrictions

- Temporary lane closures, unless otherwise provided in this special provision, shall only be allowed nightly from 8:00 P.M. to 5:00 A.M.
 - For each hour, or portion thereof, in which traffic is impeded outside these limits on the interstate, the sum of \$2,500 per hour per lane shall be deducted from the contractor, not as penalty but as liquidated damages.
 - Two lanes in each direction must always be maintained unless otherwise directed by the Engineer.

Lane Closure Restrictions

- Rolling roadblocks shall be utilized for the placement of bridge beams on I-65 on Saturday and Sundays from 5:00 A.M. to 5:00 P.M. and Monday through Friday 8:00 P.M. to 5:00 A.M. or as directed by the Engineer.
 - These rolling roadblocks shall not exceed 30 minutes in duration.
 - After each pacing interval, traffic shall resume normal flow prior to another pacing of a rolling roadblock is initiated.
 - Uniformed Police Officers or Tennessee Highway Patrol shall be utilized for these rolling roadblocks.
 - No rolling roadblocks shall be allowed during Holidays or Holiday weekends. For each hour, or portion thereof, in which traffic is impeded outside these limits on the interstate, the sum of \$2,500 per hour per lane shall be deducted from the contractor, not as penalty but as liquidated damages.

Lane Closure Restrictions

- Temporary closures of S.R. 52 and S.R. 25 ramps shall be allowed 8:00 P.M. Friday through 5:00 A.M. Monday as necessary.
 - Only two ramps at each State Route (one on-ramp and one off-ramp) shall be closed at the same time.
 - Ramp closures at S.R. 52 and S.R. 25 shall not occur concurrently or as directed by the Engineer.
 - For each hour, or portion thereof, in which these ramps are closed outside of these stated restrictions, then \$1,000 per hour shall be assessed, not as penalty, but as liquidated damage.

Lane Closure Restrictions

- Closures at Byrum Chapel Road and Highland Road for bridge construction shall not occur concurrently.
- All closures on I-65 shall be coordinated with the I-65 weight station.
- Liquidated Damages per Calendar Day will not be considered in determining estimated net savings for Value Engineering Change Proposals.

Contract Requirements

- Prequalification Requirements
- Mandatory Pre-Bid Attendance
- Standard Prequalification Applies
- Make sure your TDOT prequalification is currently valid
- Contractors with an expired prequalification that has surpassed the 90 days grace period will not be authorized to bid.
- Prospective bidders must have filed their standard prequalification questionnaire at least 14 days prior to the date of the letting.

Contract Requirements

- Meeting attendance does not guarantee bid authorization.
- All prime/joint venture contractors pre-qualified by the Department must obtain authorization to bid through the standard bid authorization procedure. **BID AUTHORIZATION MUST BE OBTAINED PRIOR TO 4:00 P.M. CST ON THE DAY PRECEDING THE LETTING.**
- Review the Instruction to Bidders to ensure you meet all qualification/requirements.
- Important to submit all required documentation into the Department timely after the letting for review. Required for review prior to an early award.

Project Questions

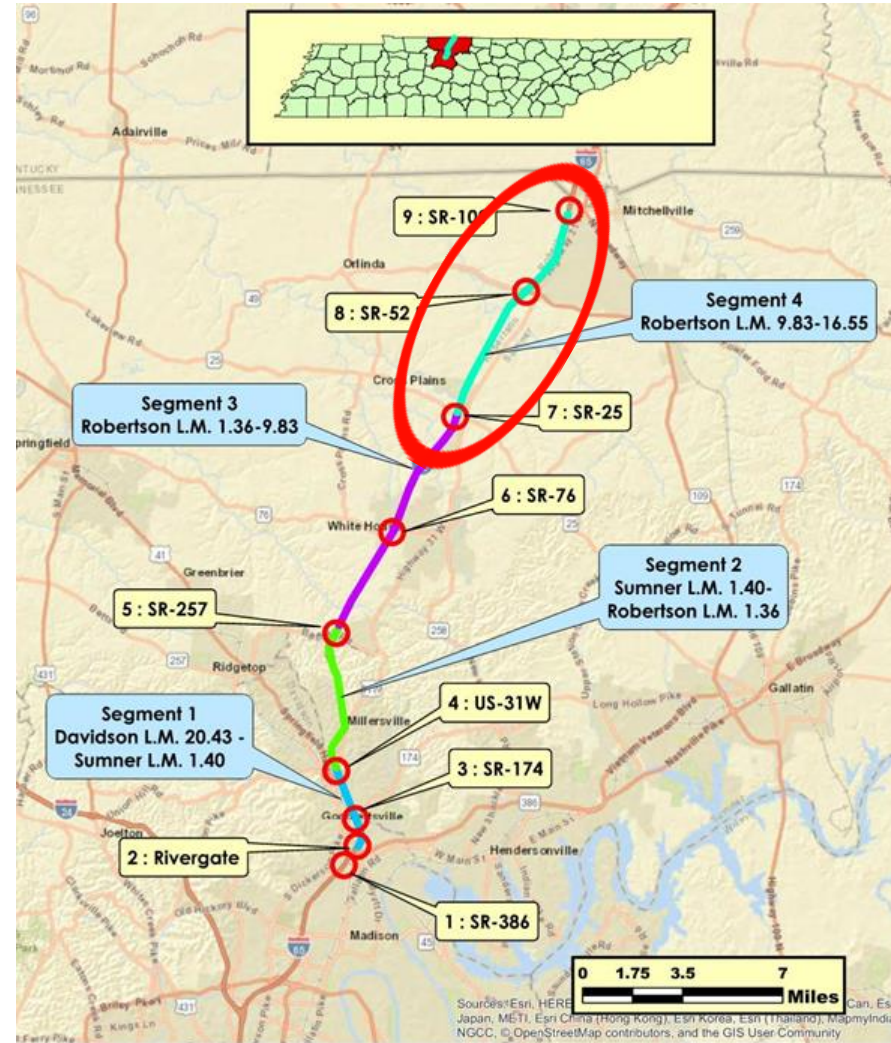
- Please send an email with any project related questions/concerns.
- Phone calls are also welcome, but please follow up via email for record purposes.
- Submit questions in as quickly as possible prior to letting week to ensure we have plenty of time to review your question/request.
- Email: jamie.waller@tn.gov
- Phone: 615-476-8802 (cell)

Purpose and Need of Project

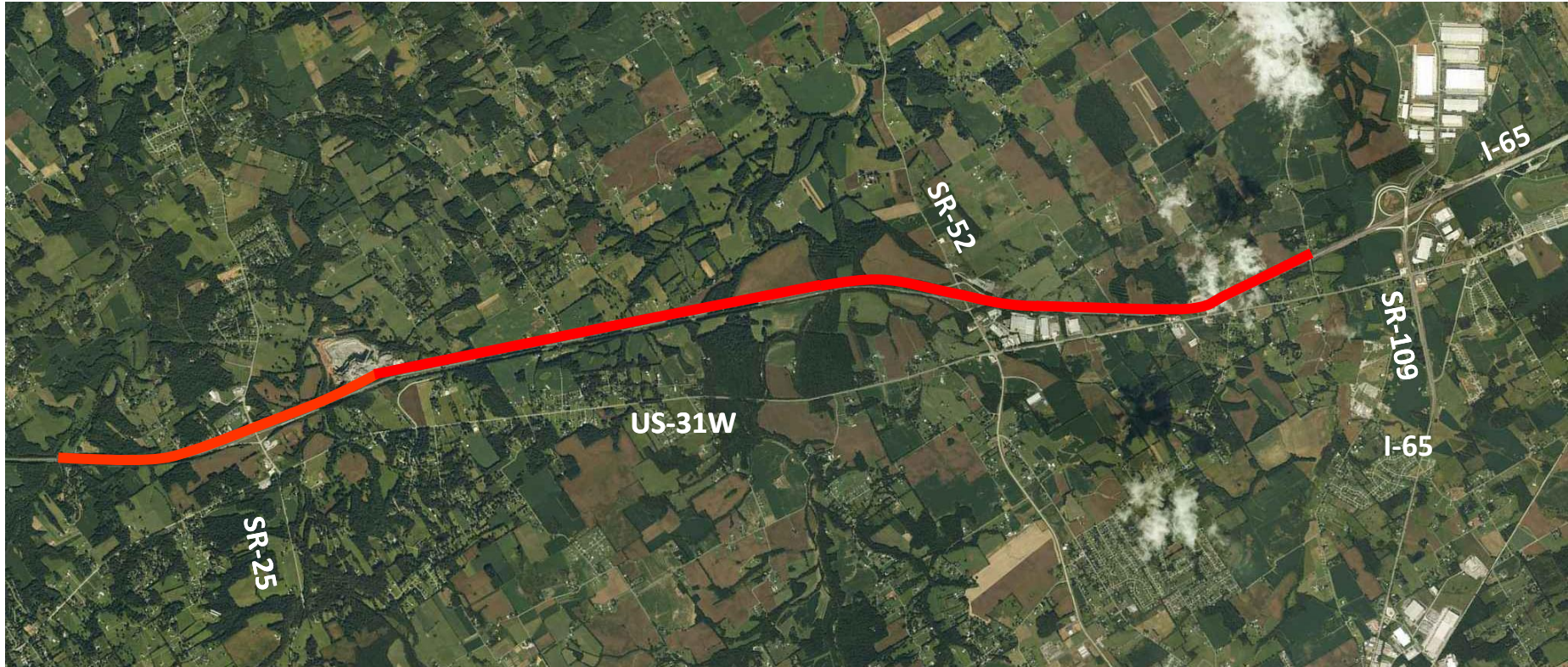
- To improve the capacity and operation of the I-65 corridor
- To improve drainage and stabilize subsurface issues
- To replace deficient bridges
- To repair damaged concrete pavement on ramps
- To convert the NB Weigh Station into a parking area

Project Information

- This project is the fourth segment of four that will improve the I-65 Corridor north of Nashville
- Project runs from Horseshoe Road to the SR-109 interchange
- 9.66 miles of Interstate
- Four overpasses
- Five pairs of mainline bridges



Project Information



Utility Information

- Move in State:
 - Cumberland Electric Membership Corporation (CEMC)
- Will utilize own forces:
 - AT&T
 - Comcast
- Overhead utilities will be impacted by work on SR-25 & Highland Road.
 - CEMC Poles (ordered prior to letting) will be relocated by Contractor and then AT&T and Comcast will relocate to the new poles

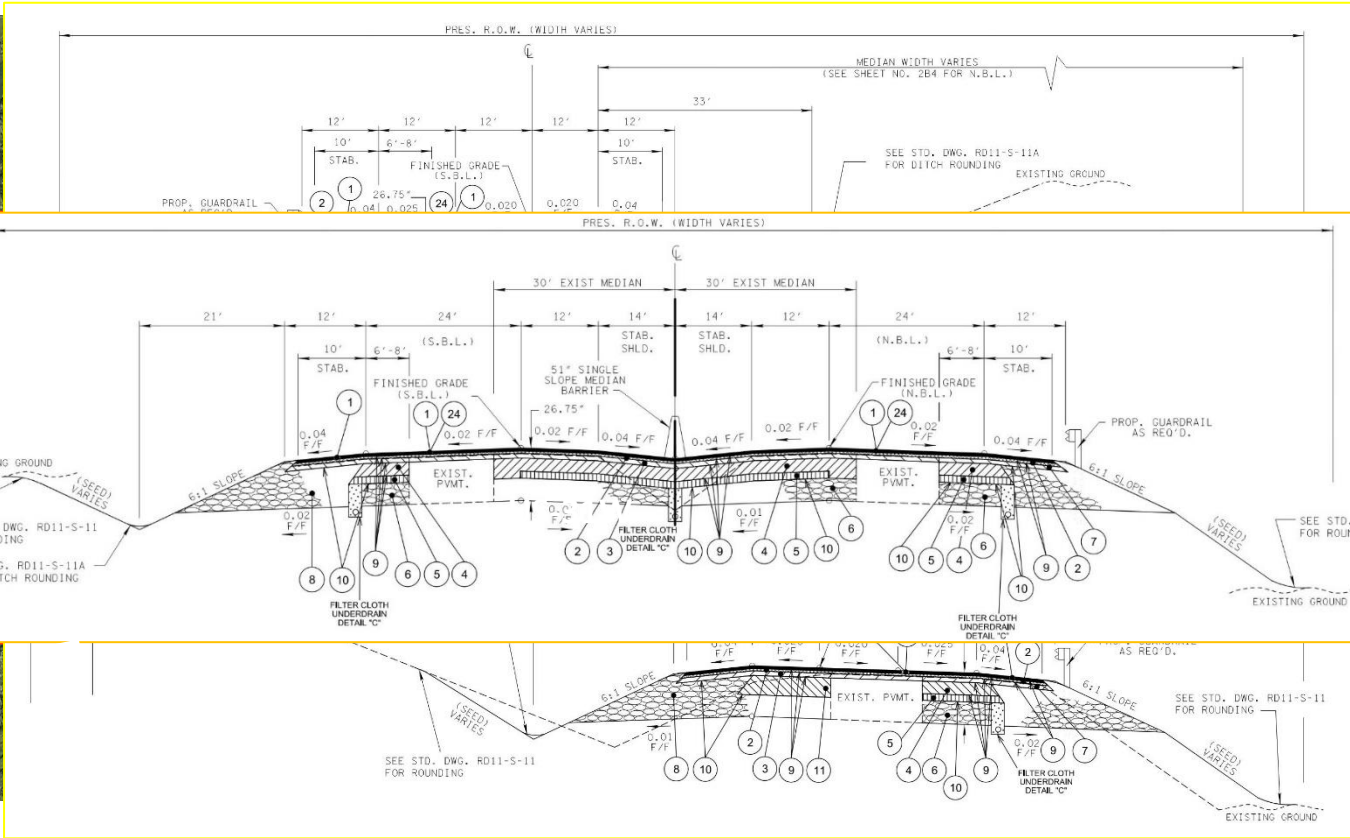
Utility Information

- Tennessee Gas Pipeline (Kinder Morgan) Requirements
 - A TGP representative must be on site anytime work is taking place within 25' of the pipelines
 - No vibratory equipment will be allowed within 10' of the pipelines
 - No proposed structures within 25' of lines
 - Specs of proposed construction equipment will be provided to TGP, prior to activity in the vicinity of the pipelines, to allow for stress calculations to be completed
- Other underground utilities are not anticipated to be impacted
 - Utility owners must be contacted prior to construction activity in the vicinity of the facilities

Proposed Improvements

- Improve Capacity & Operation of I-65
 - Provide one additional travel lane in each direction
 - Replace & Widen 10 bridges along I-65
 - Increase deceleration lanes for Off Ramps
- Replace Four Overpass Structures
 - Widen State Route 25 and State Route 52 to 3 lanes
 - Provide additional clearance for potential future widening of I-65
- Convert Northbound Weigh Station
 - Provide Truck Parking Area
- Additional Improvements
 - Add ITS facilities throughout the corridor
 - Add Lighting to the proposed Northbound Parking Area
 - Replace all existing CA Fence

I-65 Typical Sections



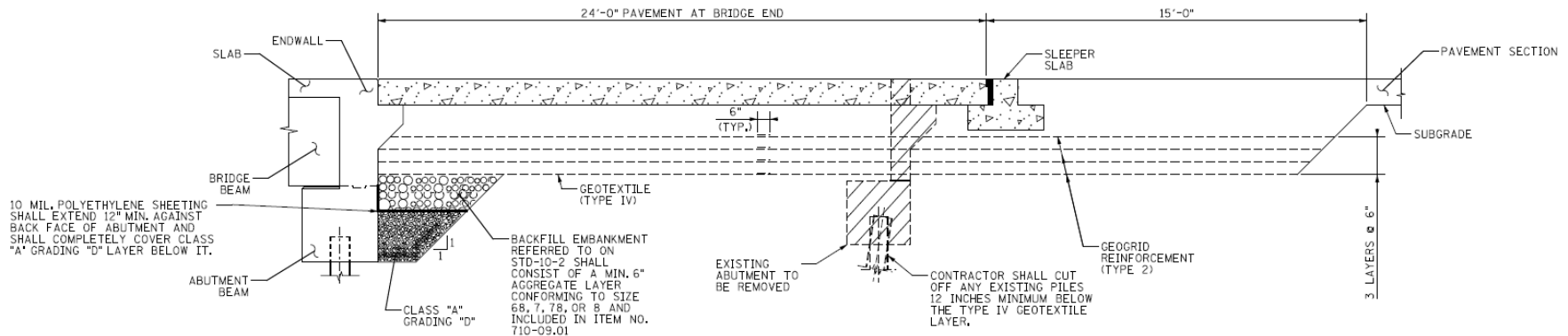
Retaining Walls

- 17 total retaining walls – Over 45,000 SF total
 - 16 walls – Constructed in front of pile supported abutments
 - One wall – Gravity wall along STR-27
- All walls require an Ashlar Stone finish

Bridge Construction

Pavement at Bridge Ends

- New P@BE's at all bridges except Byrum and Highland Road overpasses
- All new P@BE's will utilize geogrid reinforcement for additional support under the slab
- Using a modified version of the STD-10-2 standard (Look for plan details)



Bridge Construction

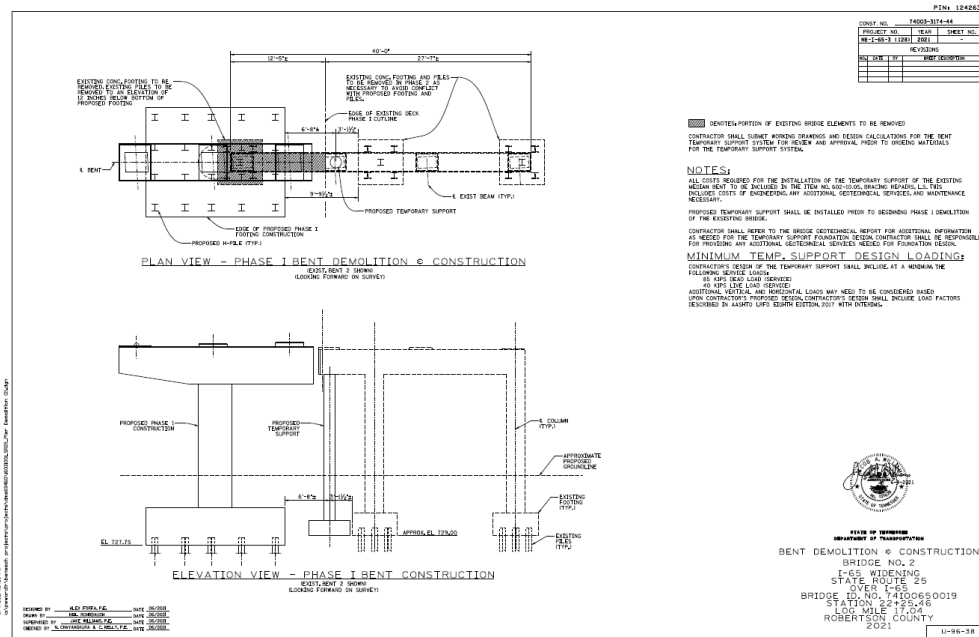
Bridge approach shoring for phased construction

- Required for phased construction of abutments, P@BE's and ret. walls
- Mainline bridge replacements
- SR25 bridge replacement
- SR52 bridges – required at outside approaches
- Northern approaches at mainline crossing of Red River may encounter shallow bedrock

Bridge Construction

Phased demolition of SR25 existing pier

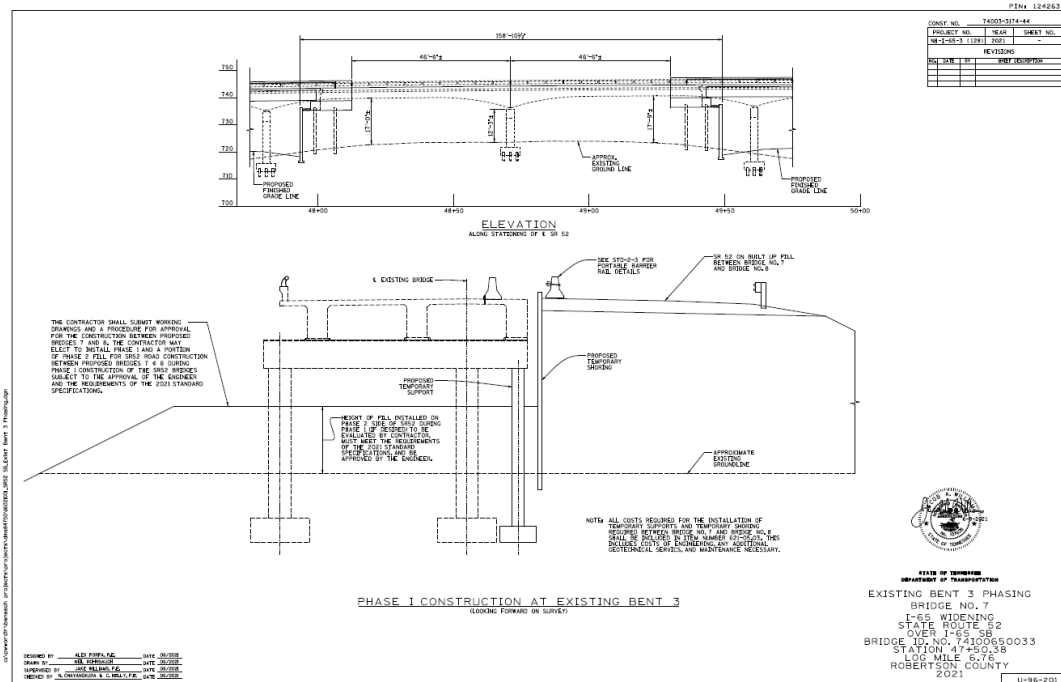
- Requires bracing
- Contractor shall submit stamped design and calculations for review and approval
- Review plans for more information



Bridge Construction

SR52 – Replacing a long bridge with two shorter bridges

- Will require temporary shoring between the new bridges
- Will require temporary bracing for phased demolition of bents.
- Review plans for more information

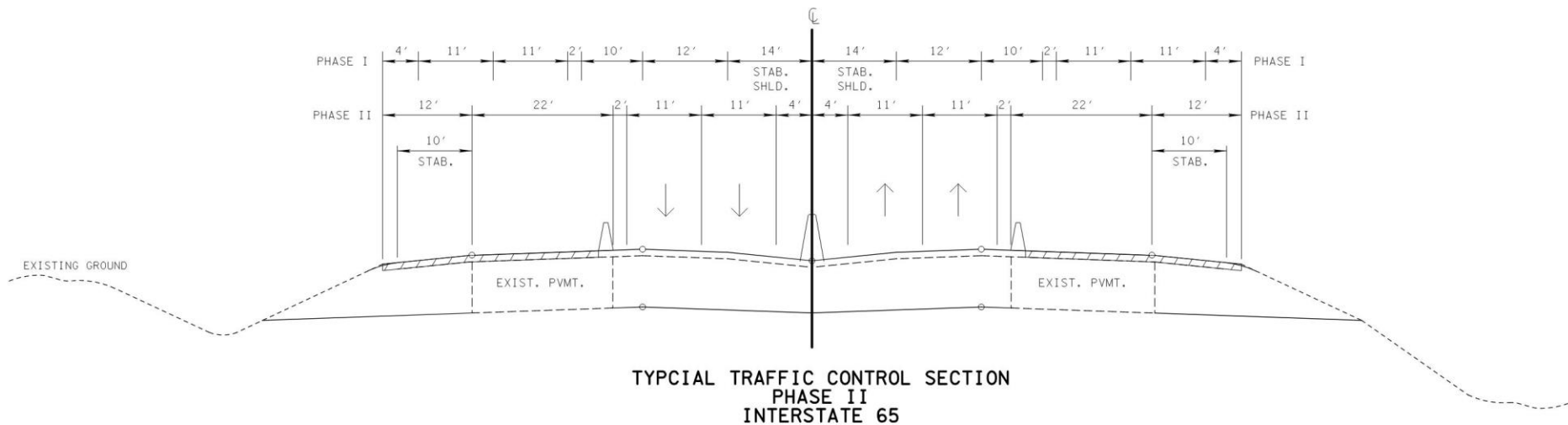


Traffic Control Phasing

I-65 Mainline

Phase I

Phase II



To be completed by shifting ramp traffic (temporary paving) in small sections

To be completed by shifting traffic to temporary ramp alignment

To be completed during Weekend Ramp Closures

Traffic Control Phasing

Northbound Weigh Station Conversion	<ul style="list-style-type: none">Existing ramps (Ramp I-J) and weigh station can be closed and proposed improvements completed
Southbound Weigh Station	<ul style="list-style-type: none">Main improvements to be completed by othersRamp Tie-Ins (Ramps K & L) to be completed in this projectWeigh Station will be closed for the majority of construction (traffic swapped to outside lanes)
State Route 25 & State Route 52	<ul style="list-style-type: none">Bridges will be replaced and the roadway widened in two phasesRamp intersections will be reworked as needed to match each phase
Byrum Chapel Road and Highland Road	<ul style="list-style-type: none">Each bridge will be replaced during a road closureBoth roads cannot be closed at the same time

Construction Challenges

- Staffing
 - With 14 bridges being replaced and 9+ miles of roadway widening, how many different crews will be needed to meet the required time frame?
- Material
 - The overall size of this project will require large amounts of various materials. Where can you get it? How can you get it to the job site?
- Equipment
 - Do you have enough construction equipment?



QUESTIONS