



TDOT Region 4 Quarterly Report

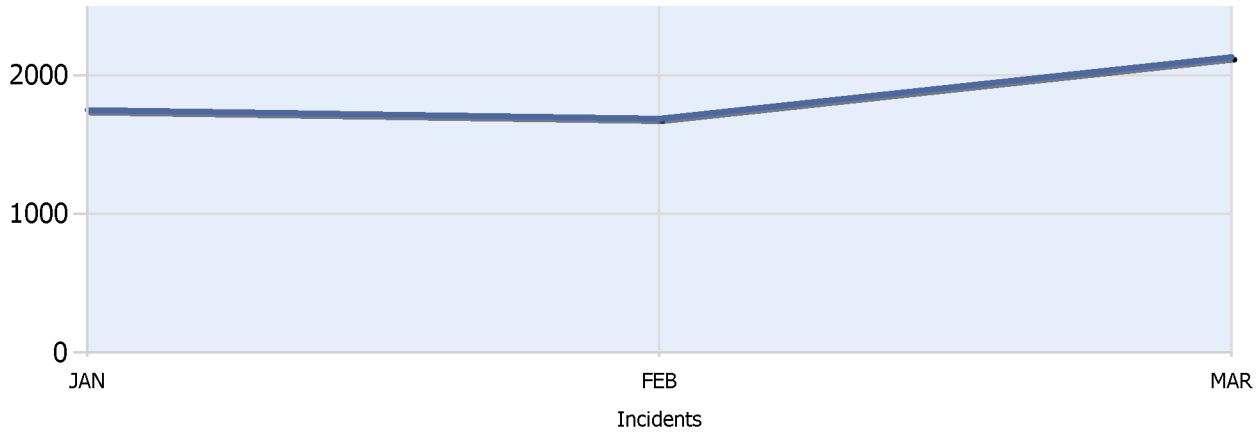


Quarter 1, 2016

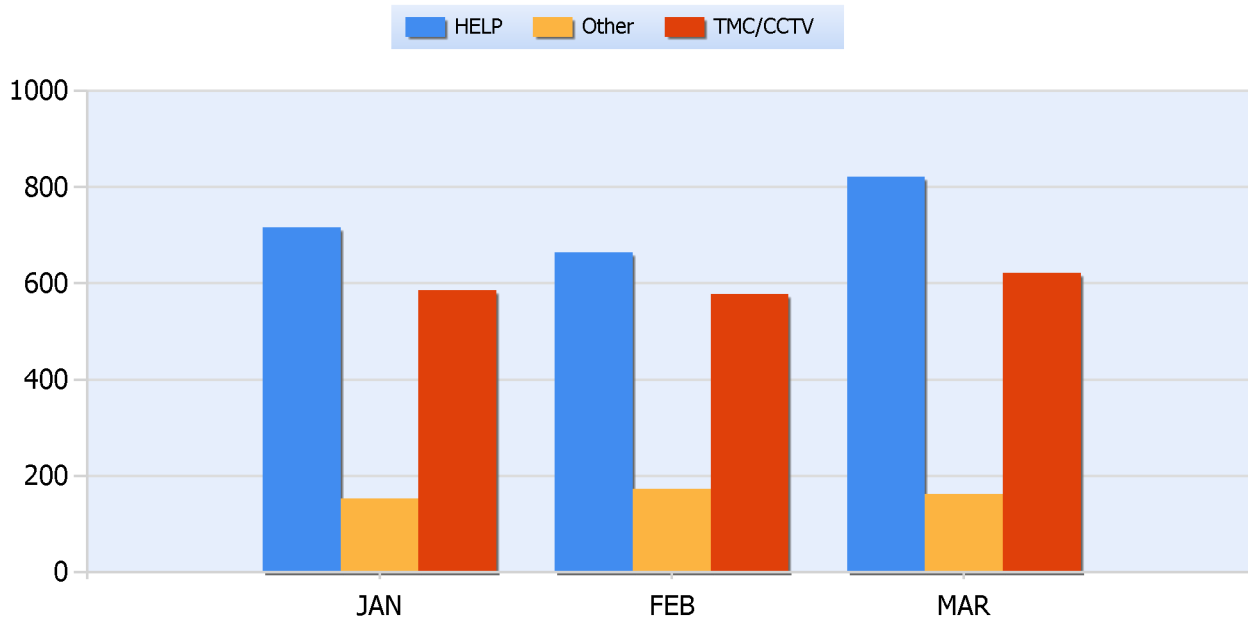
Total Incidents Managed This Quarter: 5621

Incidents Managed YTD

Total Incidents Managed YTD - 5573



Incidents By Detection Source





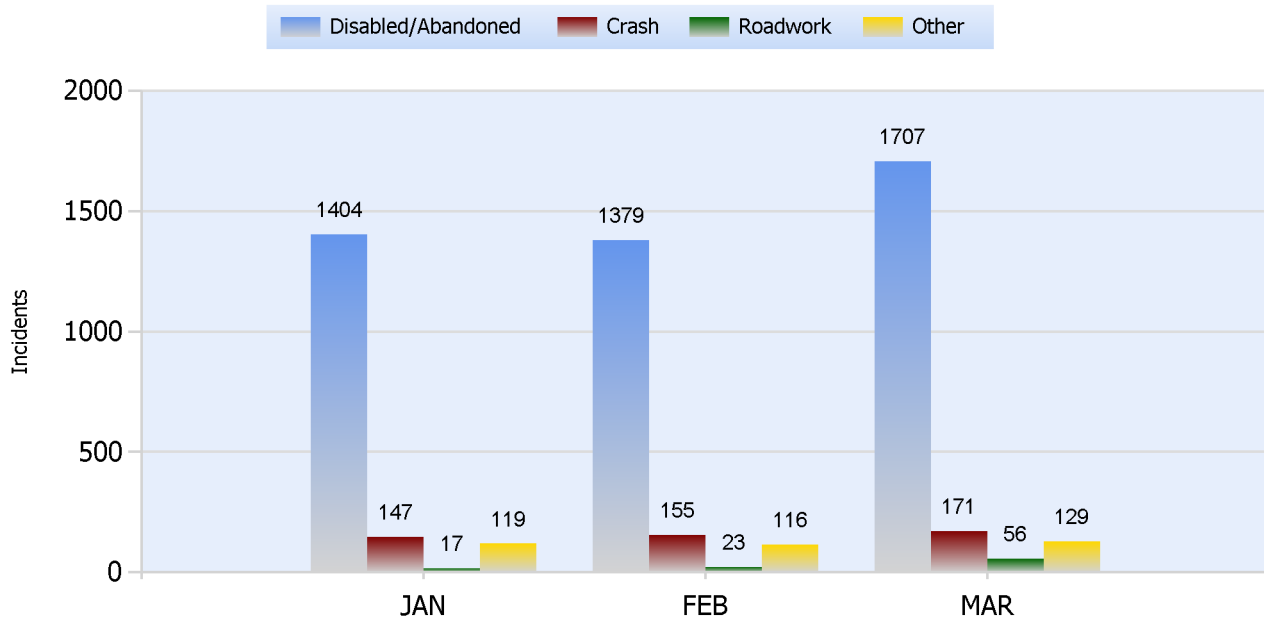
TDOT Region 4 Quarterly Report



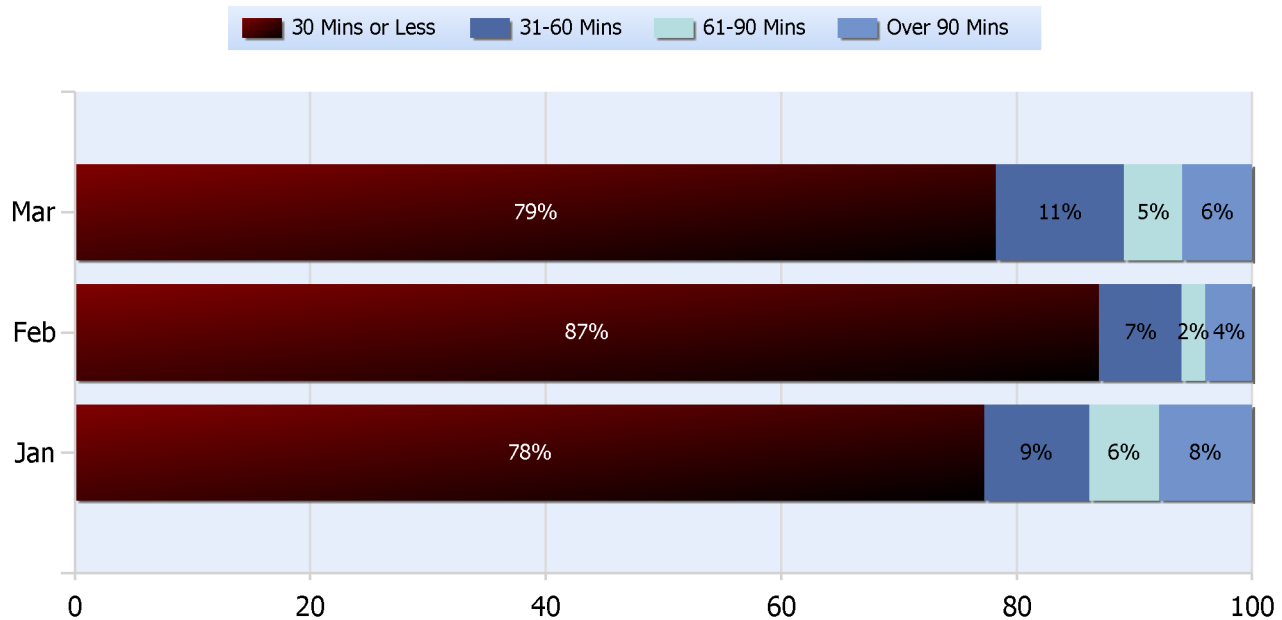
Quarter 1, 2016

Total Incidents Managed This Quarter: 5621

Total Roadway Incidents



Lane Blockage Clearance Times Overall





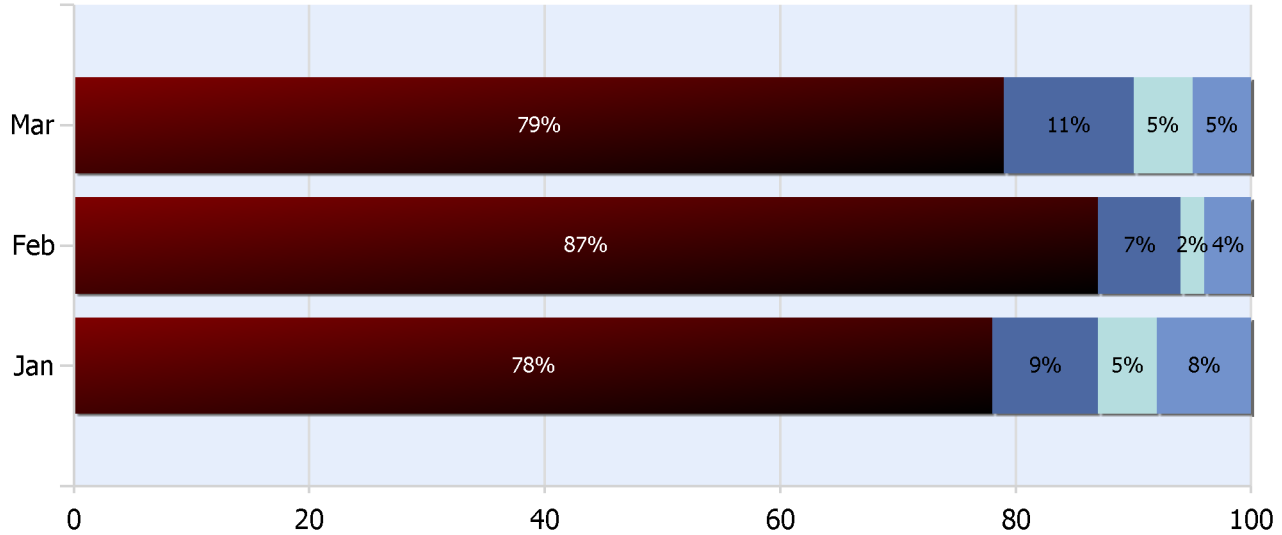
TDOT Region 4 Quarterly Report



Quarter 1, 2016

Total Incidents Managed This Quarter: 5621

Lane Blockage Clearance Times Urban





TDOT Region 4 Quarterly Report

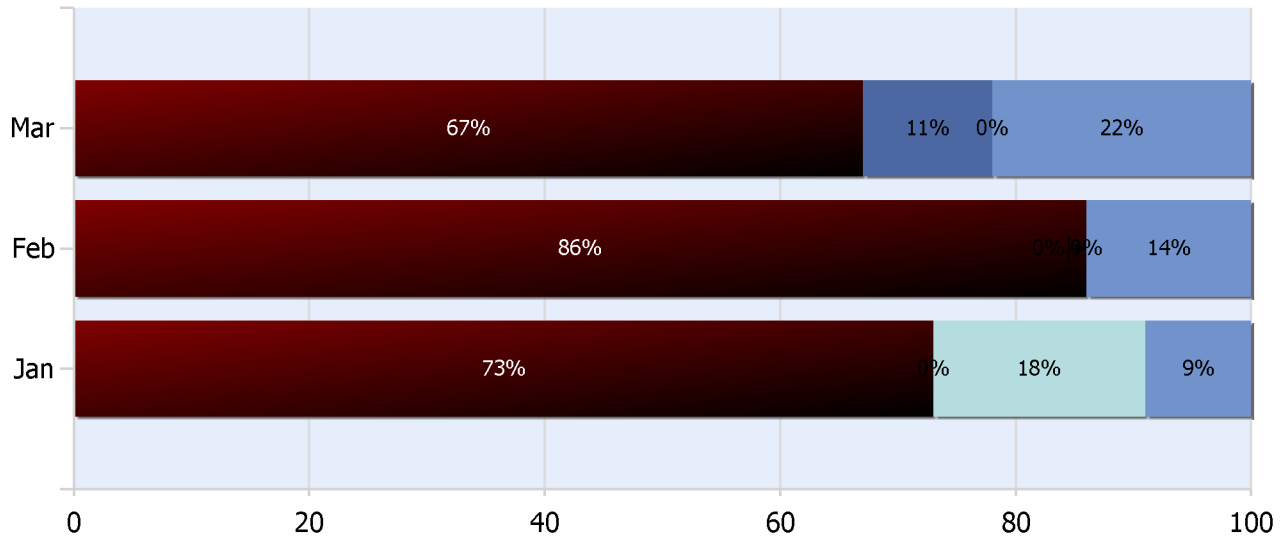


Quarter 1, 2016

Total Incidents Managed This Quarter: 5621

Lane Blockage Clearance Times Rural

30 Mins or Less 31-60 Mins 61-90 Mins Over 90 Mins





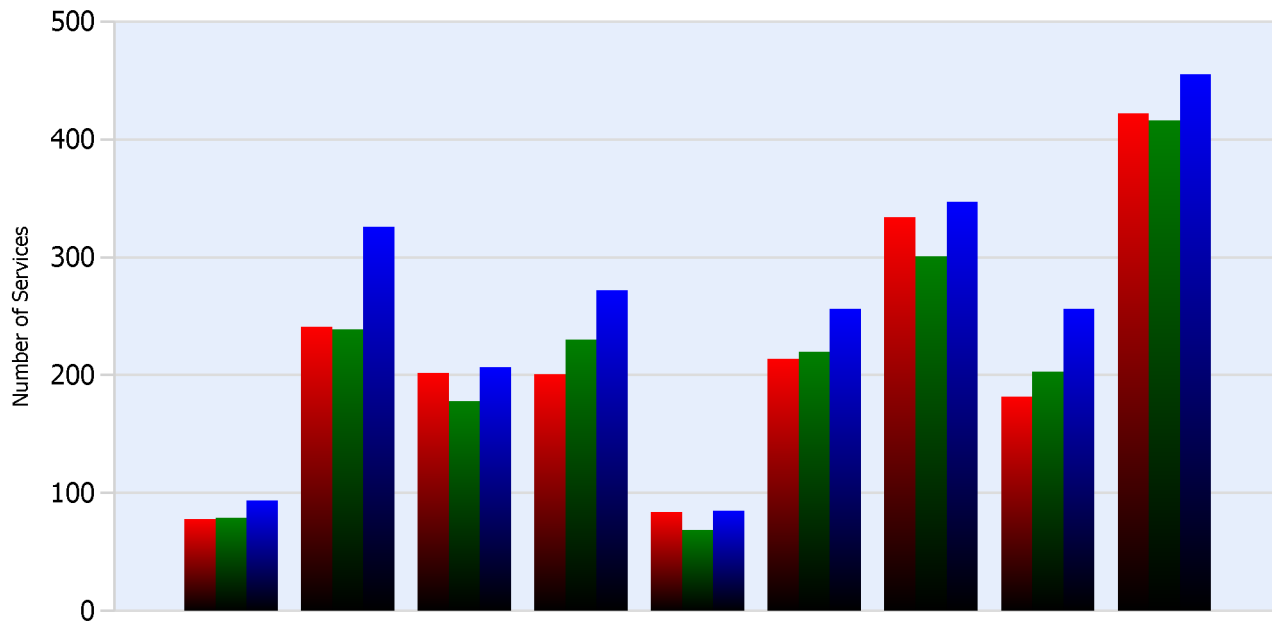
TDOT Region 4 Quarterly Report



Quarter 1, 2016

Total Incidents Managed This Quarter: 5621

HELP Services Provided



Month	Debris	Tire	Fuel	Mech	Jump	Traffic Ctrl	Tag	No Service	Other
JAN	78	241	202	201	84	214	334	182	422
FEB	79	239	178	230	69	220	301	203	416
MAR	94	326	207	272	85	256	347	256	455

DMS Usage

	Jan	Feb	Mar	Quarter
Average % ON Time	19.3	21.8	36.9	26.1
Average Post Time	2.4	2.5	2.3	2.4
Avg Messages Per Sign	30.1	33.4	25.8	29.8
Total Messages Posted	1445	1602	1237	4284



TDOT Region 4 Quarterly Report



Quarter 1, 2016

Total Incidents Managed This Quarter: 5621

Events Affecting Traffic This Quarter:

- 1/1 - 1536 - Fatality Crash - I-240 W at SR385 - Multiple lanes blocked - clear at 1830.
- 1/3 - 2223 - Fatality crash - I-240 W at SR385 - Ramp closed - clear at 0128.
- 2/11 - 1023 - Tractor trailer load shift - I-40 W at MM 11 - 2 wreckers needed - clear at 1248.
- 2/20 - 2350 - Overturned tractor trailer - I-40 E at exit 1E - All EB lanes closed - clear at 1032.
- 3/24 - 0553 - Pedestrian hit - fatality - I-240 W at MM 19.6 - All WB lanes closed - clear at 1046.
- 3/28 - 1933 - Shooting on ramp from I-240 E to I-40 E - Ramp closed - clear at 2318.

Travel Lane Blockage Events:

Roadway	Incident Count	Incident %
I-240	332	43.9
I-40	283	37.4
I-55	74	9.8
SR385	67	8.9