

Interstate 24 Multimodal Corridor Study

Study Update Presented at the Chattanooga-Hamilton County /
North Georgia TPO TCC Meeting

March 12, 2013



Presentation Outline



- Interstate 24: A Strategic Corridor



- Study Approach and Schedule

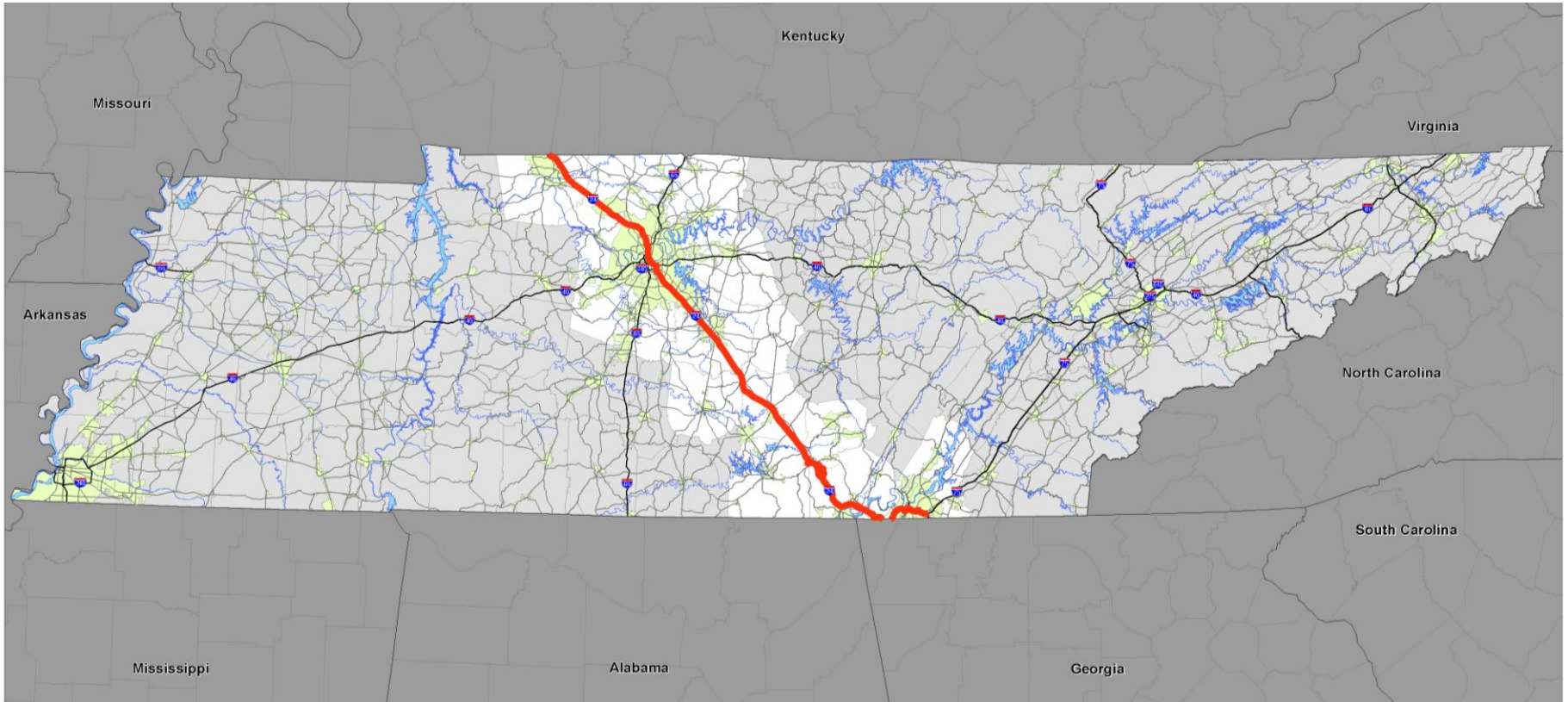


- Current Conditions along I-24

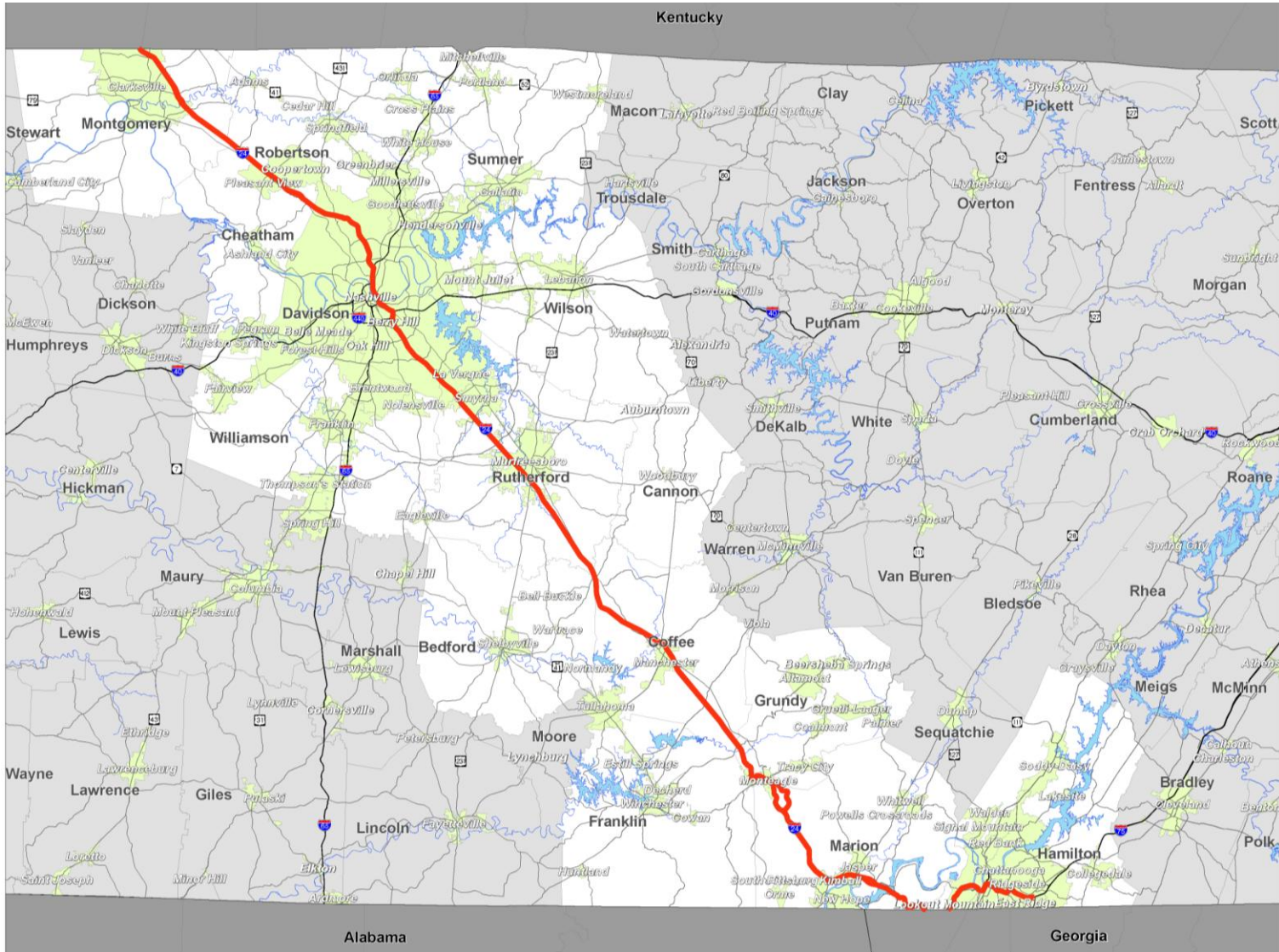


- Website and Comment Form

Interstate 24: A Strategic Corridor

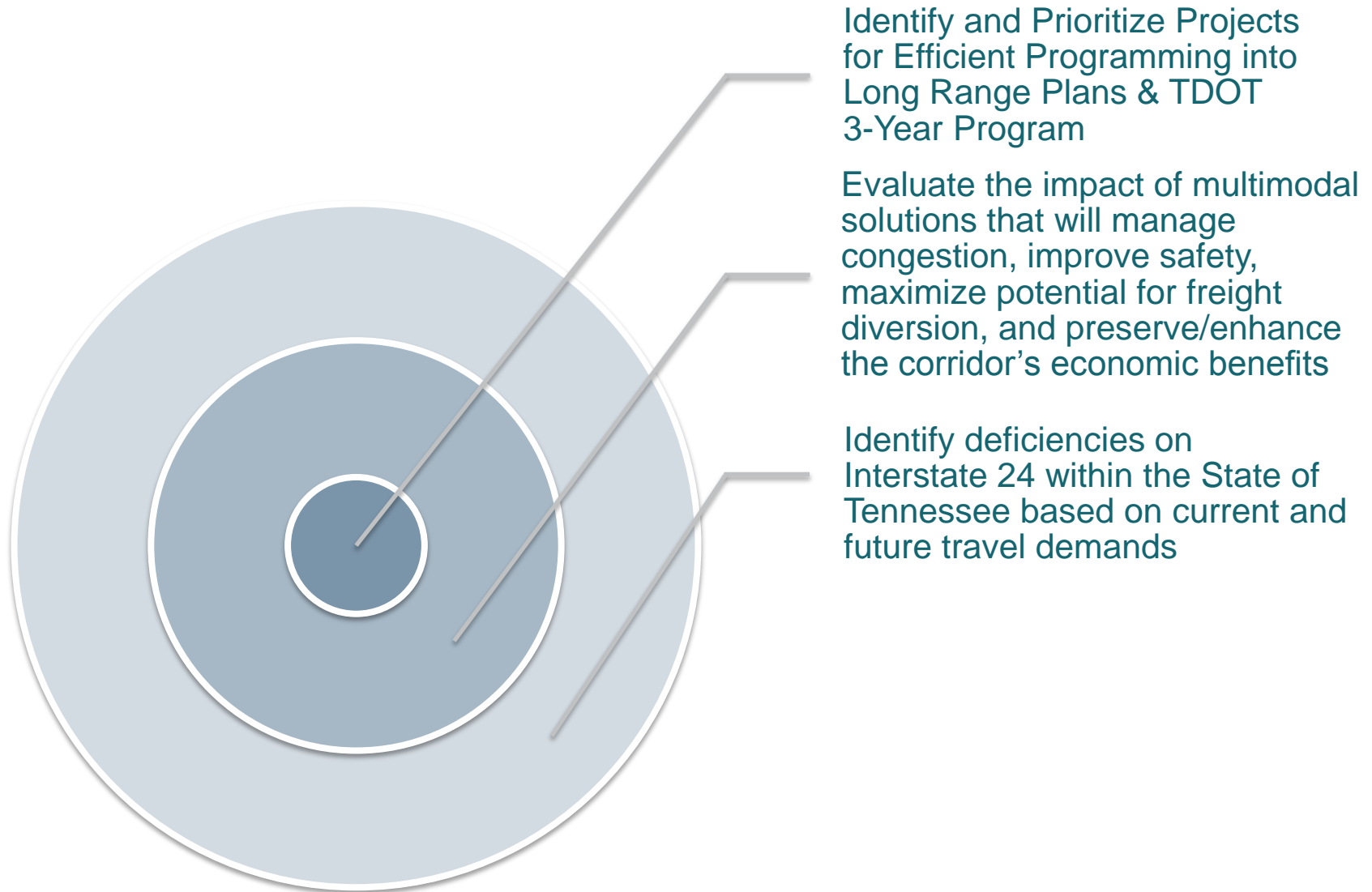


I-24 Corridor Map

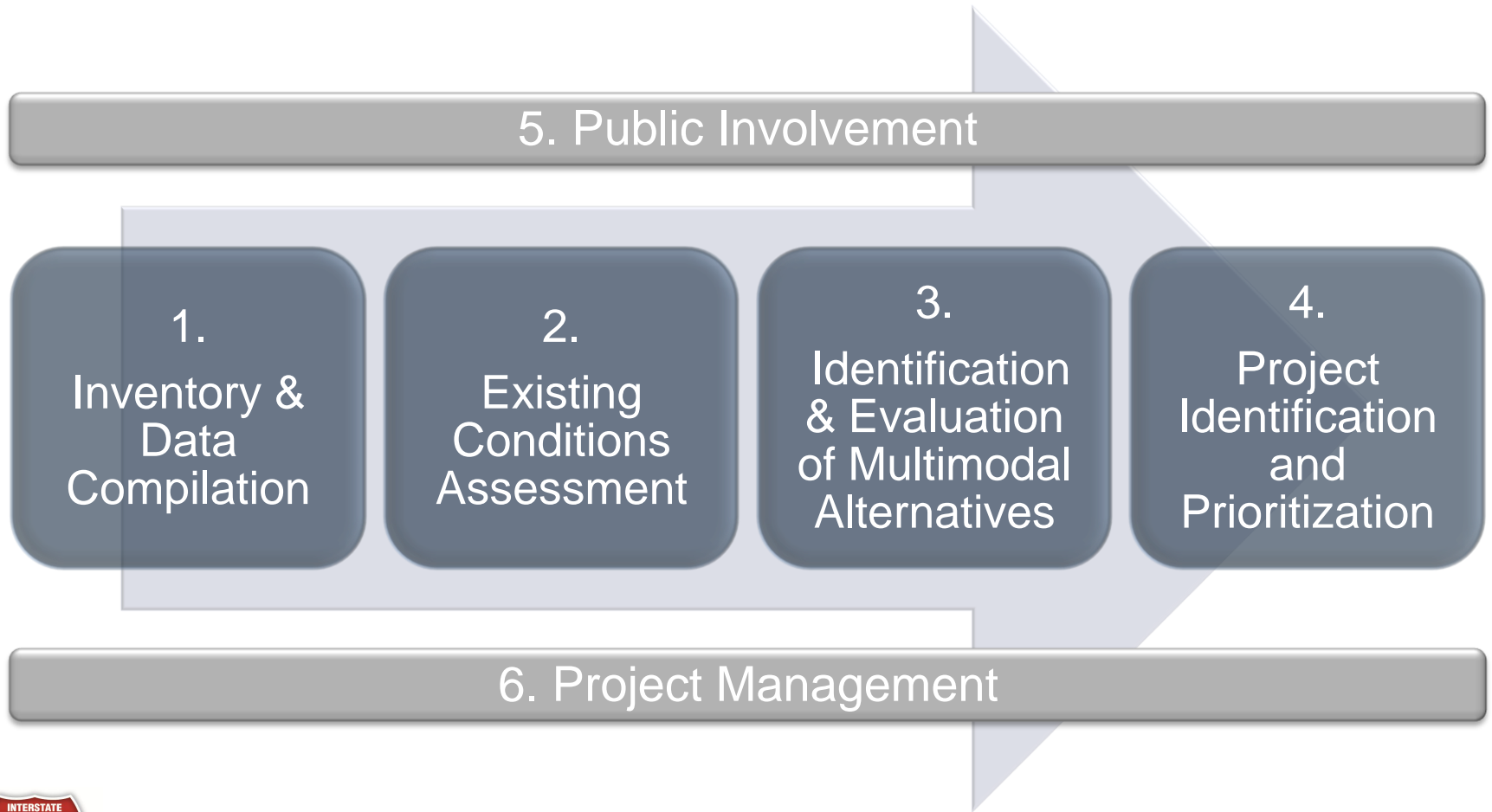


Study Update

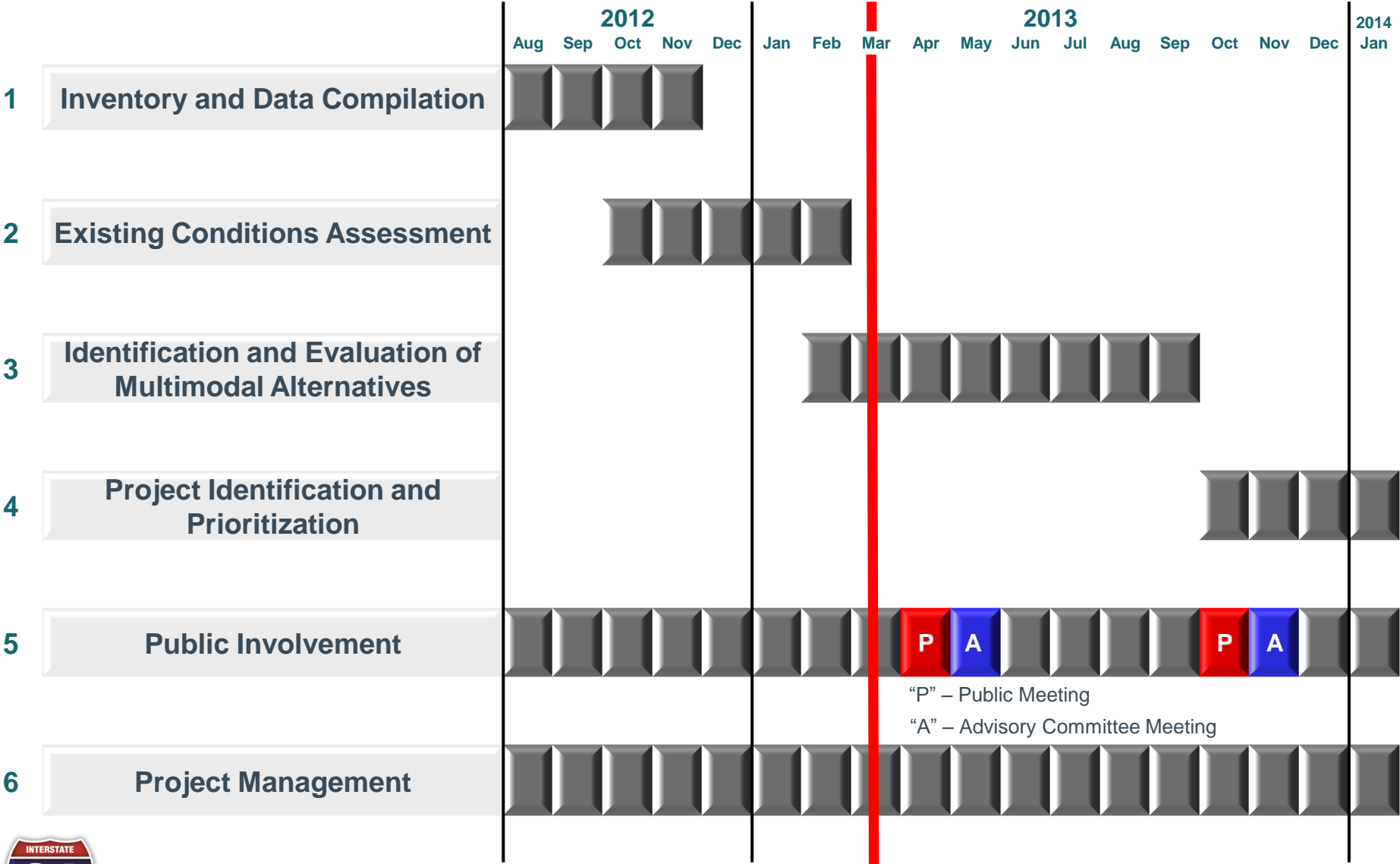
Study Purpose



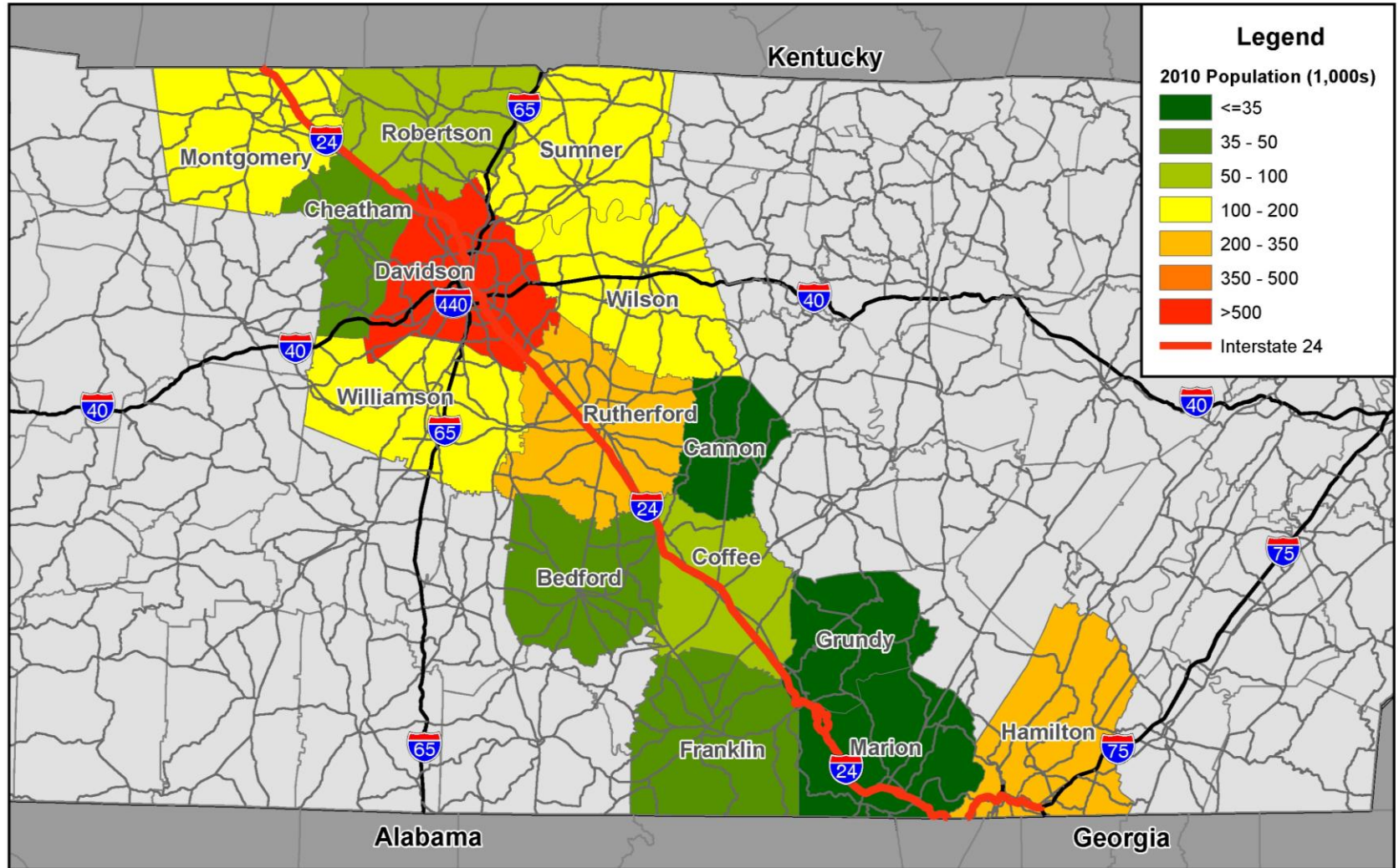
Study Approach



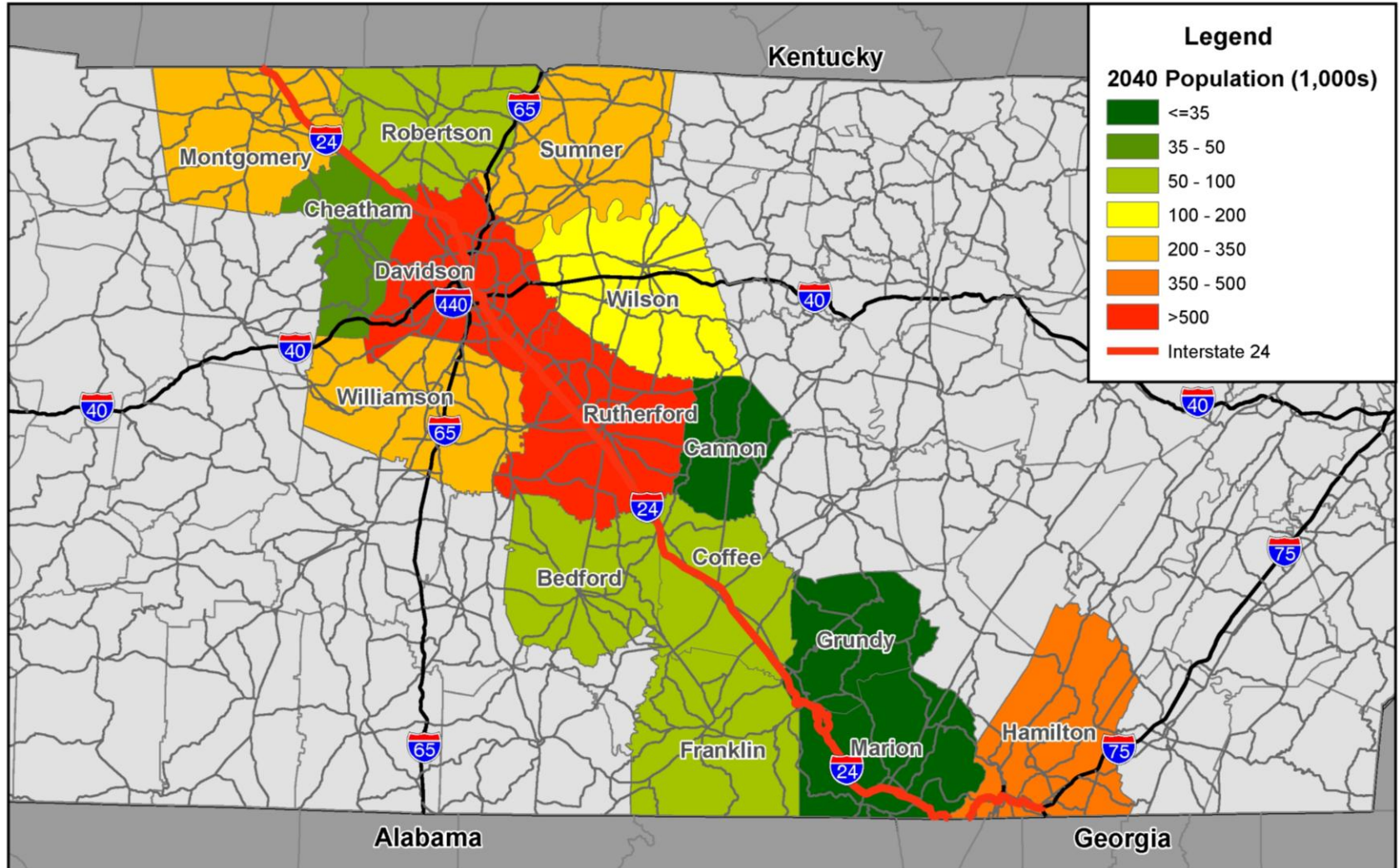
Schedule



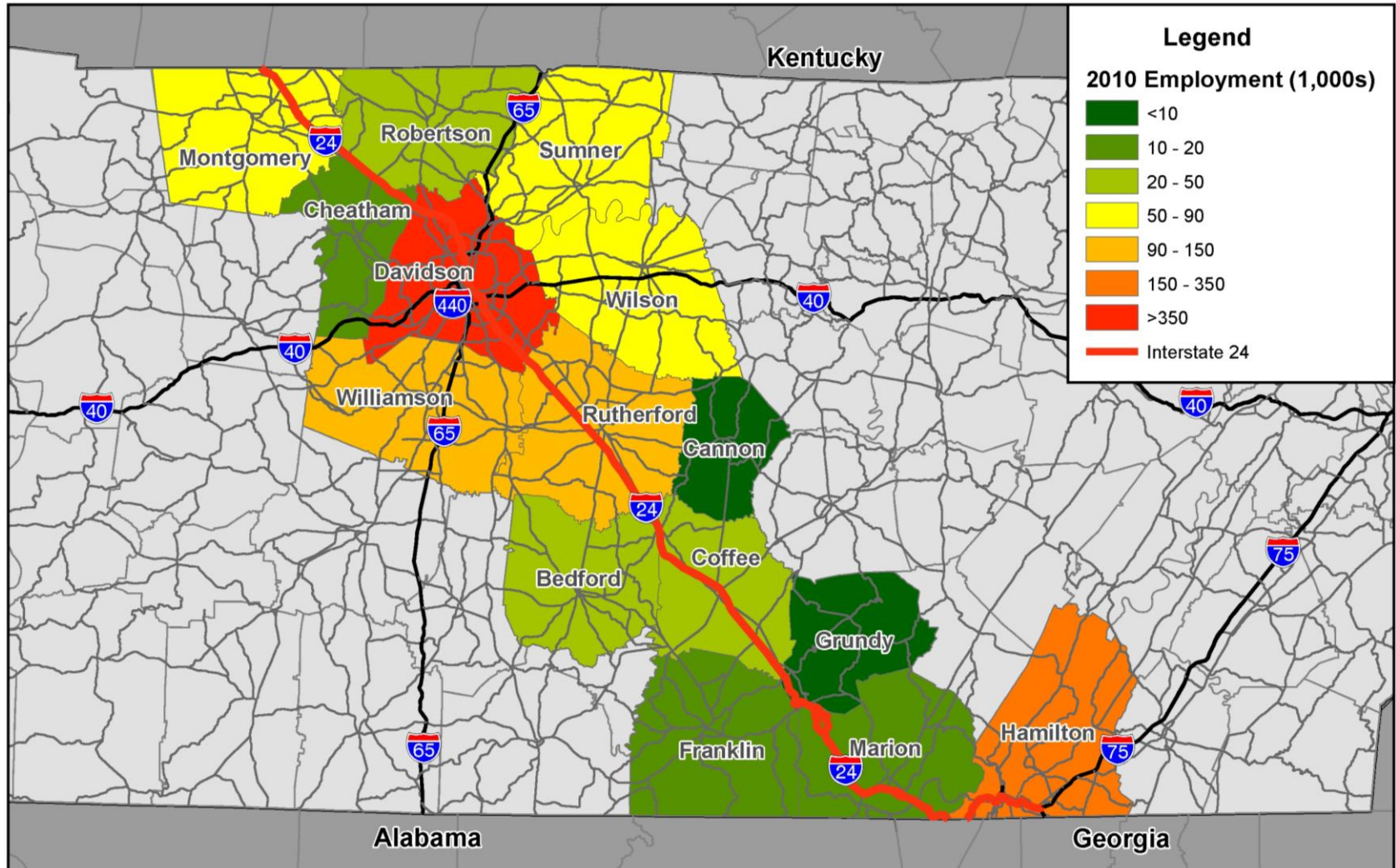
2010 Population by County



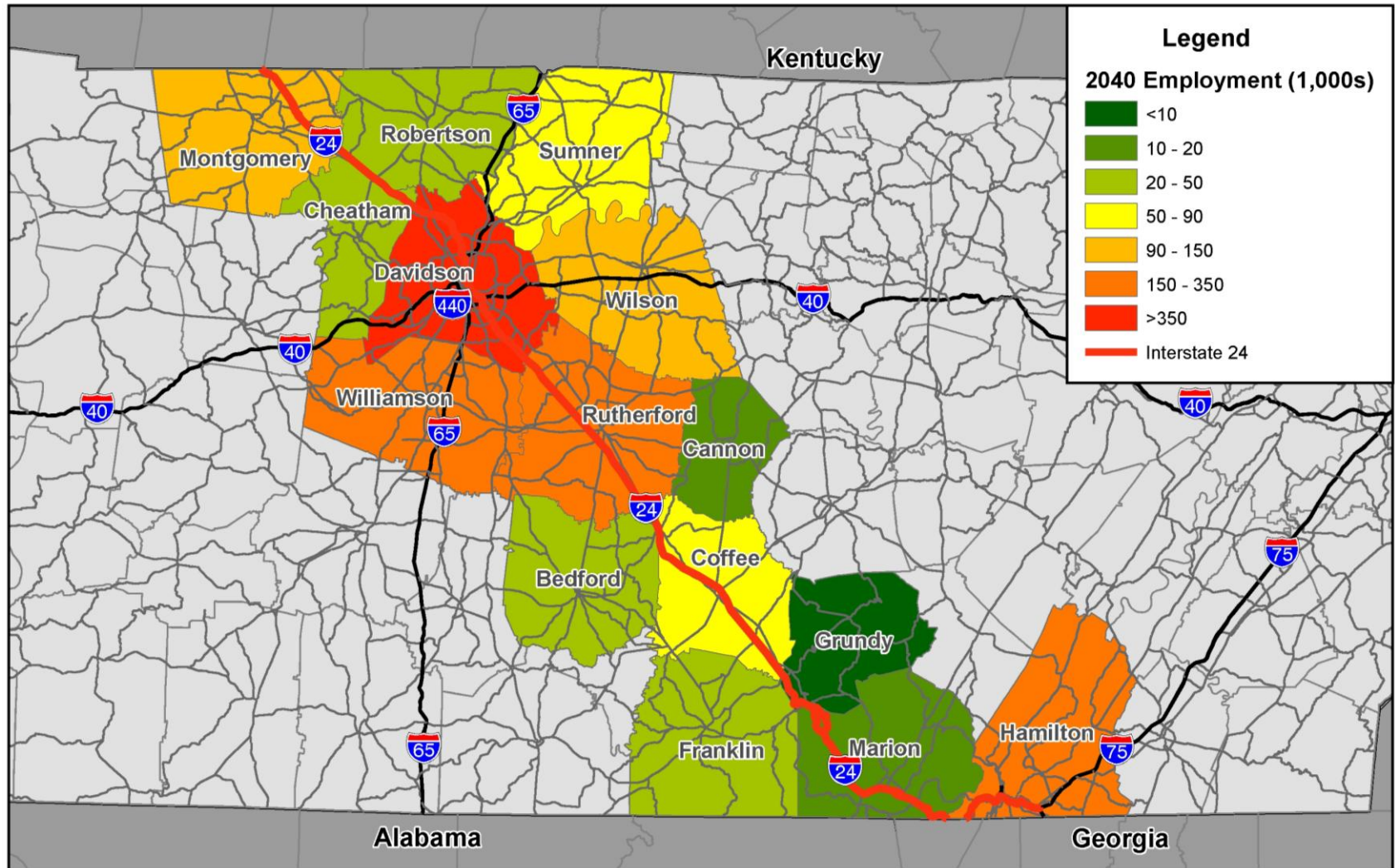
2040 Population by County



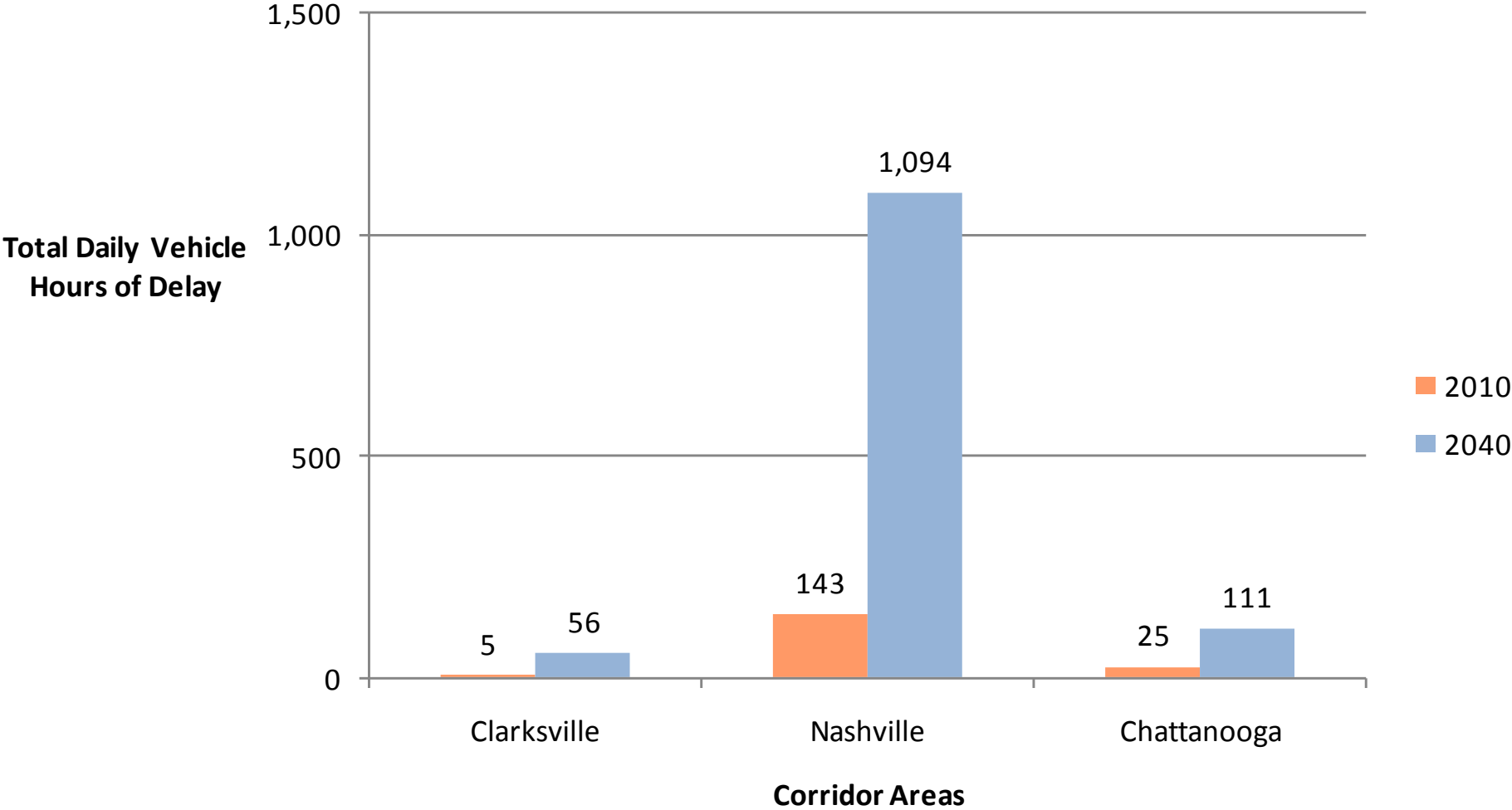
2010 Employment by County



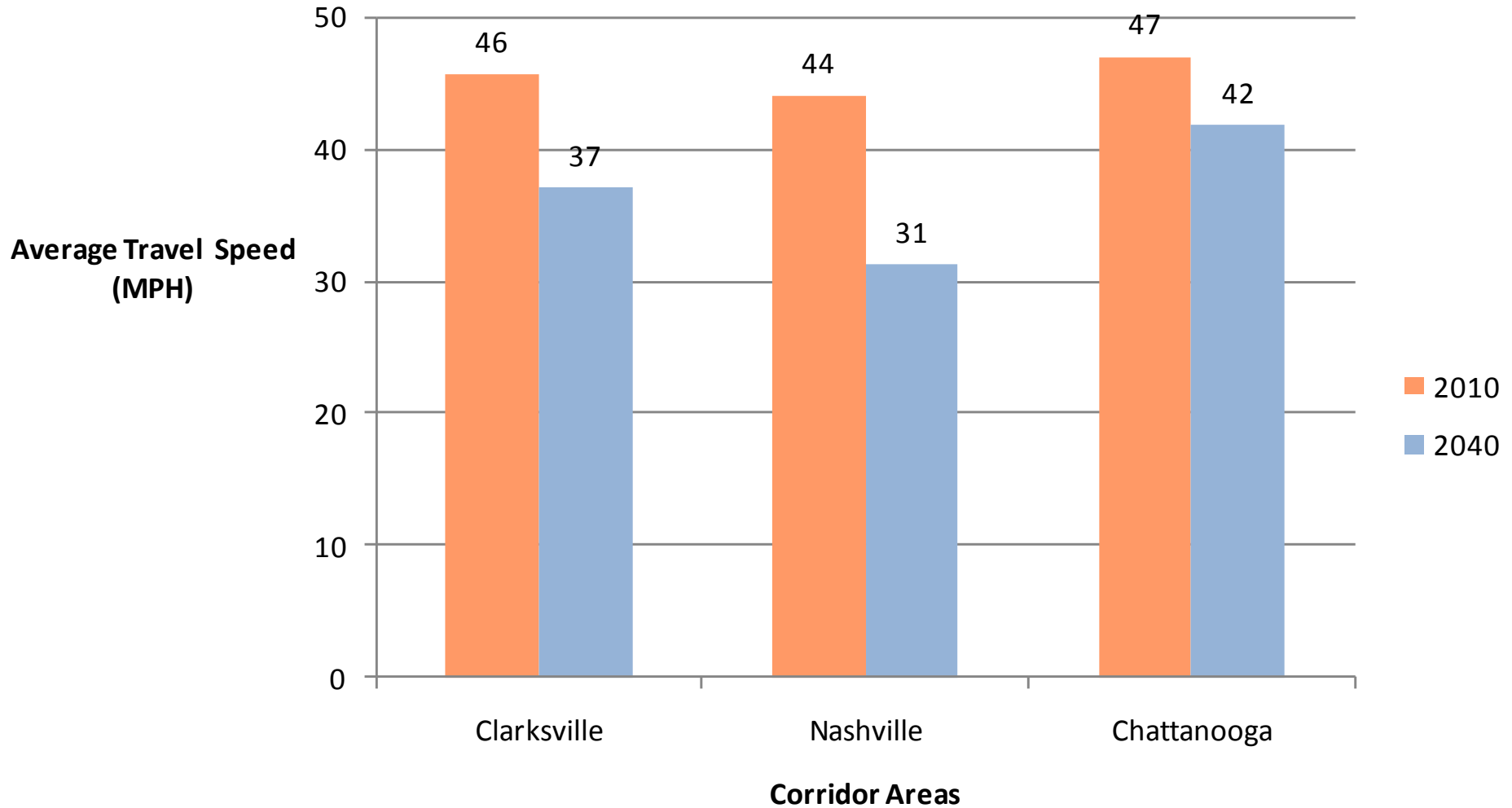
2040 Employment by County



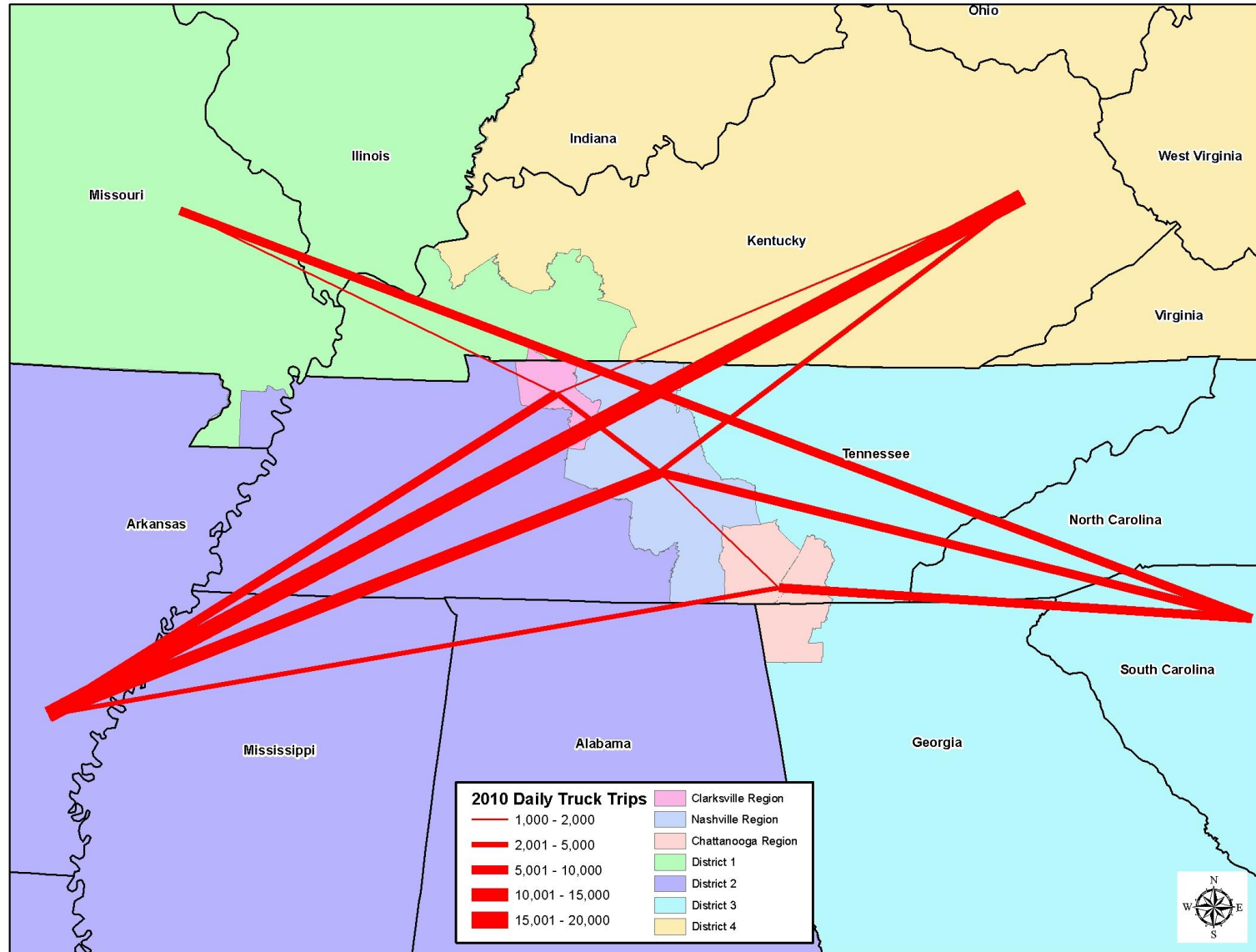
Delay in the I-24 Study Area



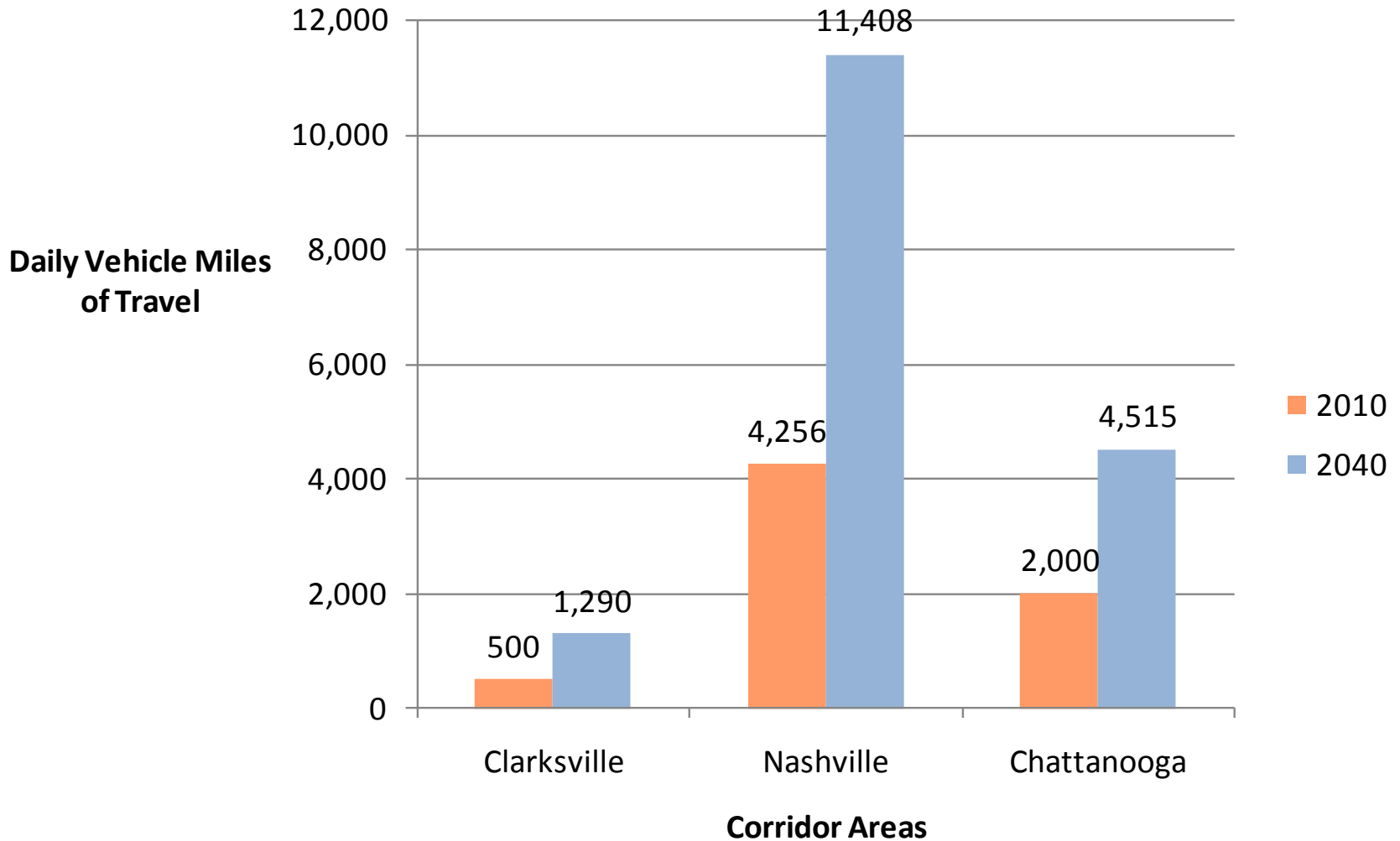
Average Speed in I-24 Study Area



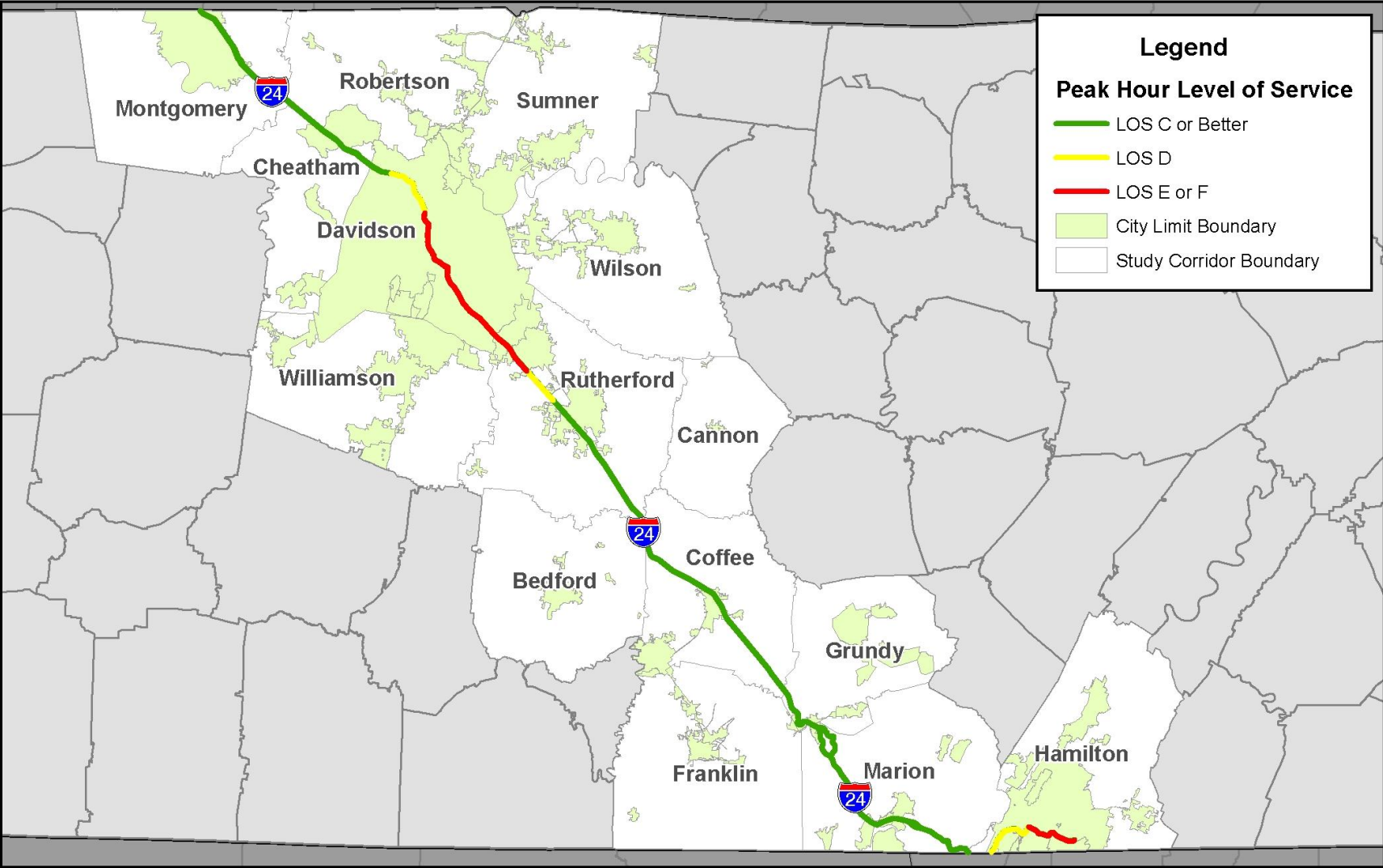
Truck Trips in I-24 Study Area



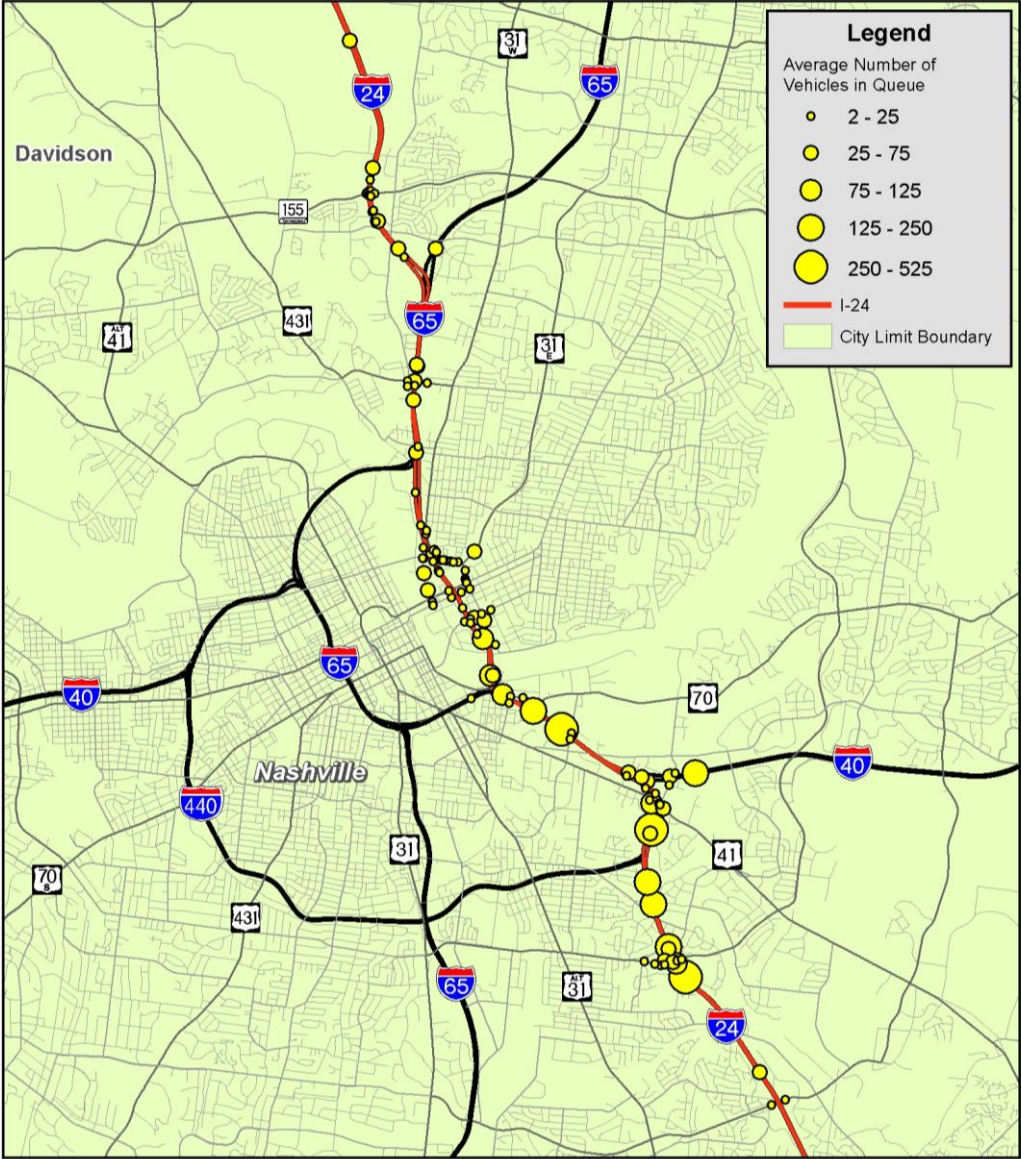
Truck Travel in I-24 Study Area



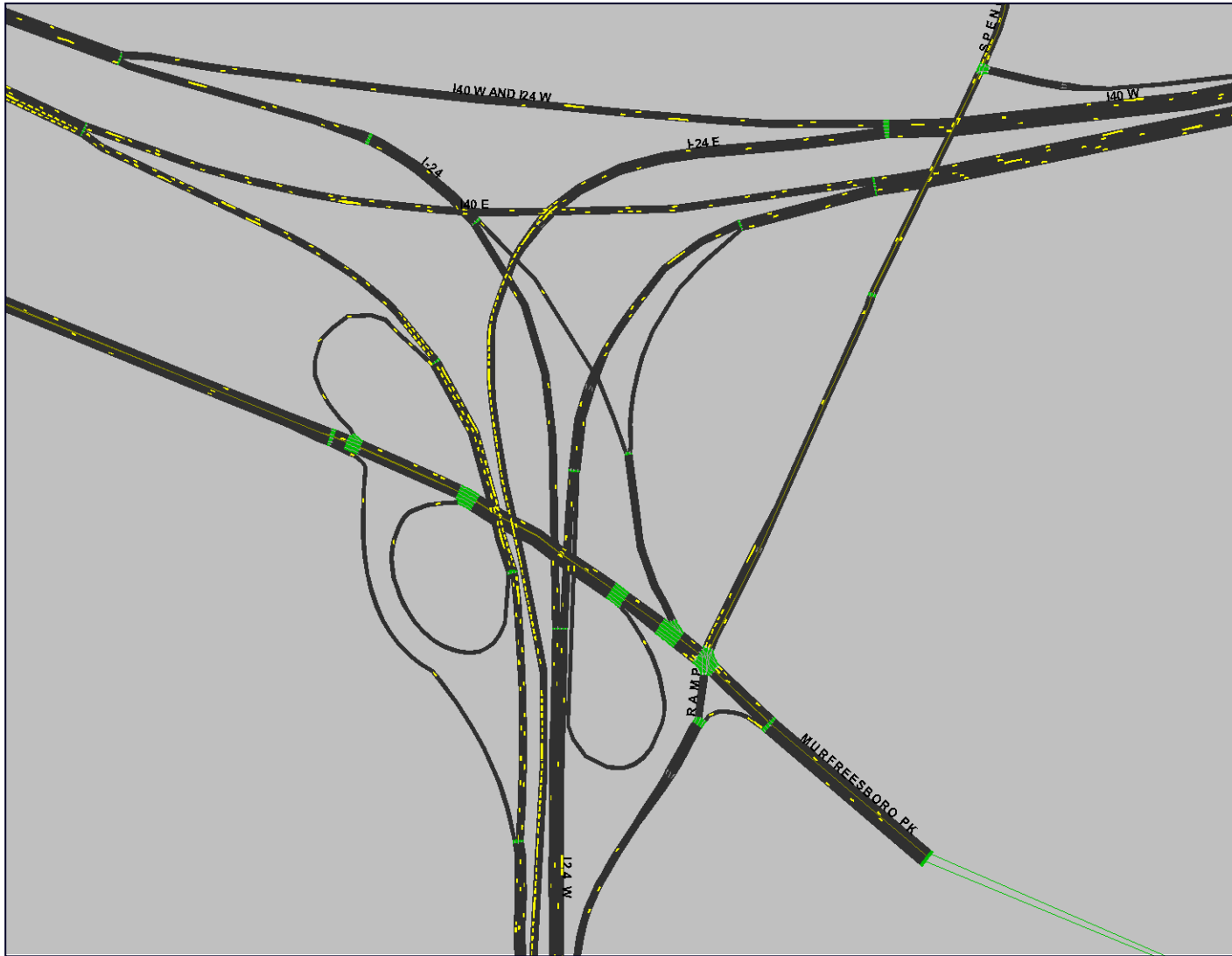
Peak Hour Congestion Along I-24



Peak Hour Queuing of Vehicles Along I-24



Animation of Traffic Along I-24



Website and Comment Form

- <http://www.tdot.state.tn.us/i24/>
 - Documents
 - Public Meeting – **April 25th** at the Brainerd Community Center, 5 – 7pm
 - Comment Form

- **Fill out Comment Form Online**

Questions

Interstate 24 Multimodal Corridor Study

