

Includes All Responders

Reporting Period: January 1, 2020 to December 31, 2020

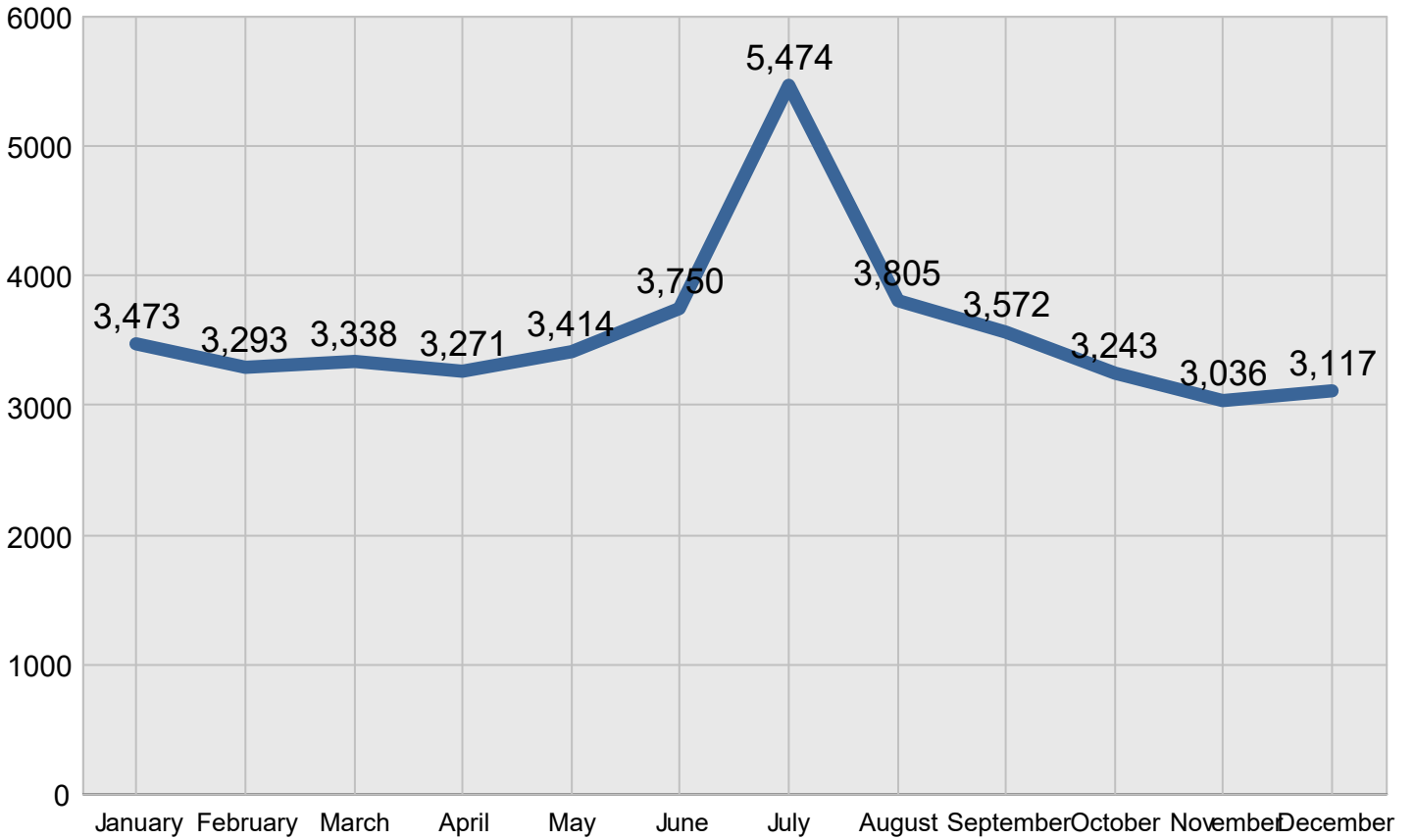
Region 3

Created on: June 15, 2022 1:20 pm County: All Counties Report Template version 2.0

Total Incidents Managed This Year 42,786

Incidents Managed

Incidents Managed - Monthly



Performance Measures Summary

Incidents Overall Response

	January	February	March	April	May	June	July	August	September	October	November	December	Total
Events included	837	809	939	820	859	919	1,007	929	812	852	625	608	10,016
Notification Duration (min.)*	0.0	0.0	0.0	0.0	0.0	0.0	0.0	0.0	0.0	0.0	0.0	0.0	0.0
Verification Duration (min.)	0.0	0.0	0.0	0.0	0.0	0.0	0.0	0.0	0.0	0.0	0.2	0.1	0.0
Response Duration (min.)	9.5	9.1	10.8	8.1	9.7	8.3	9.9	8.9	10.2	8.8	7.0	6.0	8.9
Open Roads Duration (min.)	17.7	25.9	26.0	21.2	30.6	23.8	21.3	30.4	25.9	23.4	24.9	51.2	26.6
Departure Duration (min.)	12.6	27.5	17.8	13.8	12.3	22.0	5,340.9	33.9	15.9	14.5	21.6	28.0	548.4
Roadway Clearance Duration (min.)	27.2	35.1	36.8	29.3	40.2	32.0	31.2	39.3	36.1	32.2	32.2	57.4	35.6
Incident Clearance Duration (min.)	39.8	62.6	54.5	43.0	52.6	54.0	5,372.1	73.2	52.0	46.8	53.7	85.4	584.0

* THP data is not available for Notification Duration

Note:

Response Duration (min.): [First Notification to First Arrival]

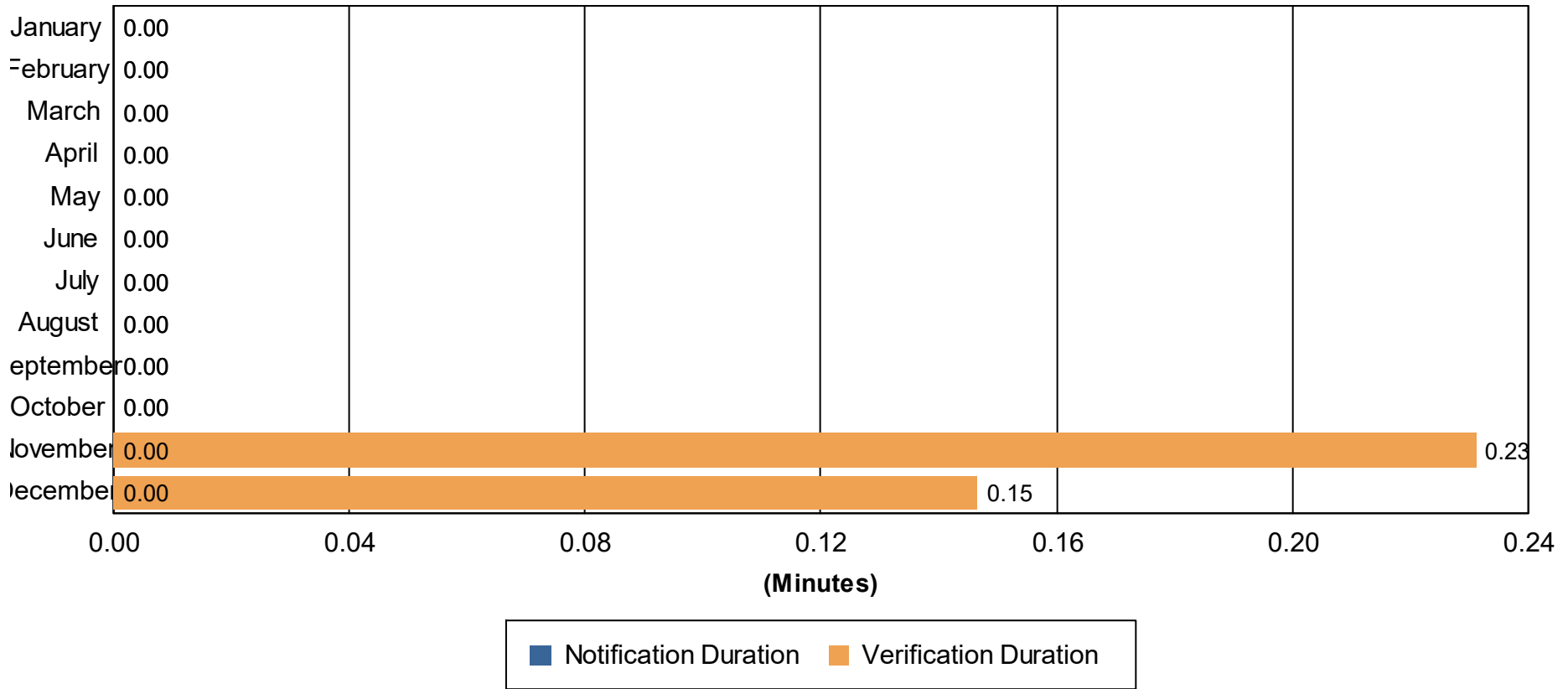
Open Roads Duration (min.): [First Arrival to Travel Lanes Cleared]

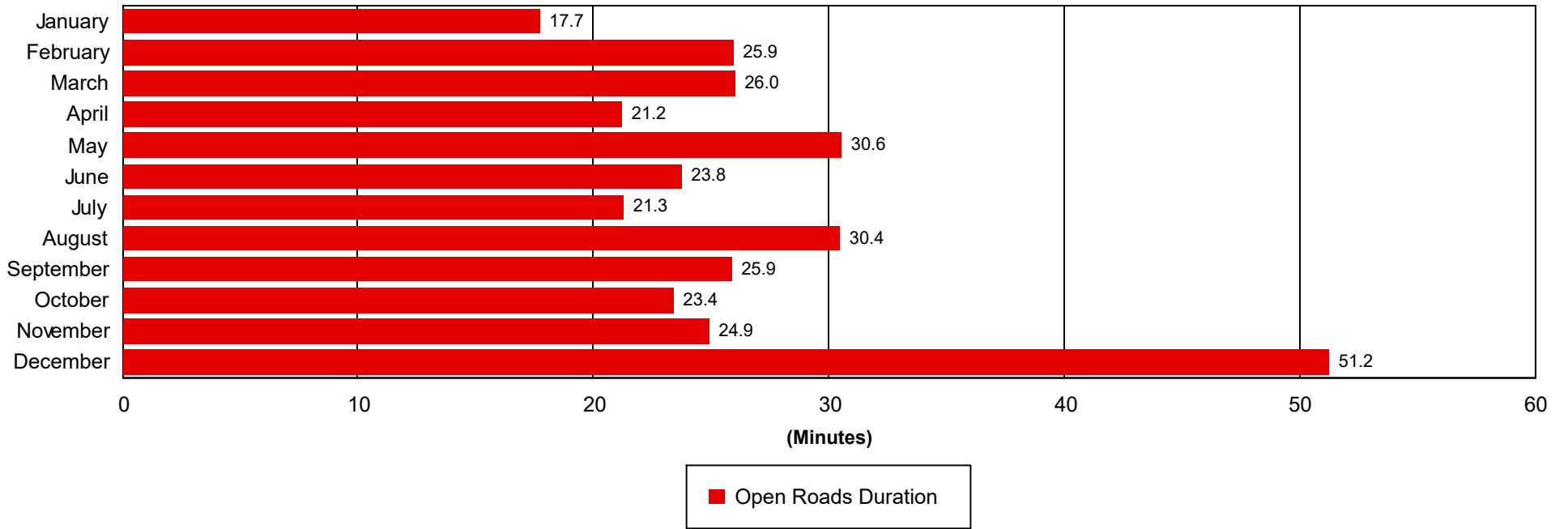
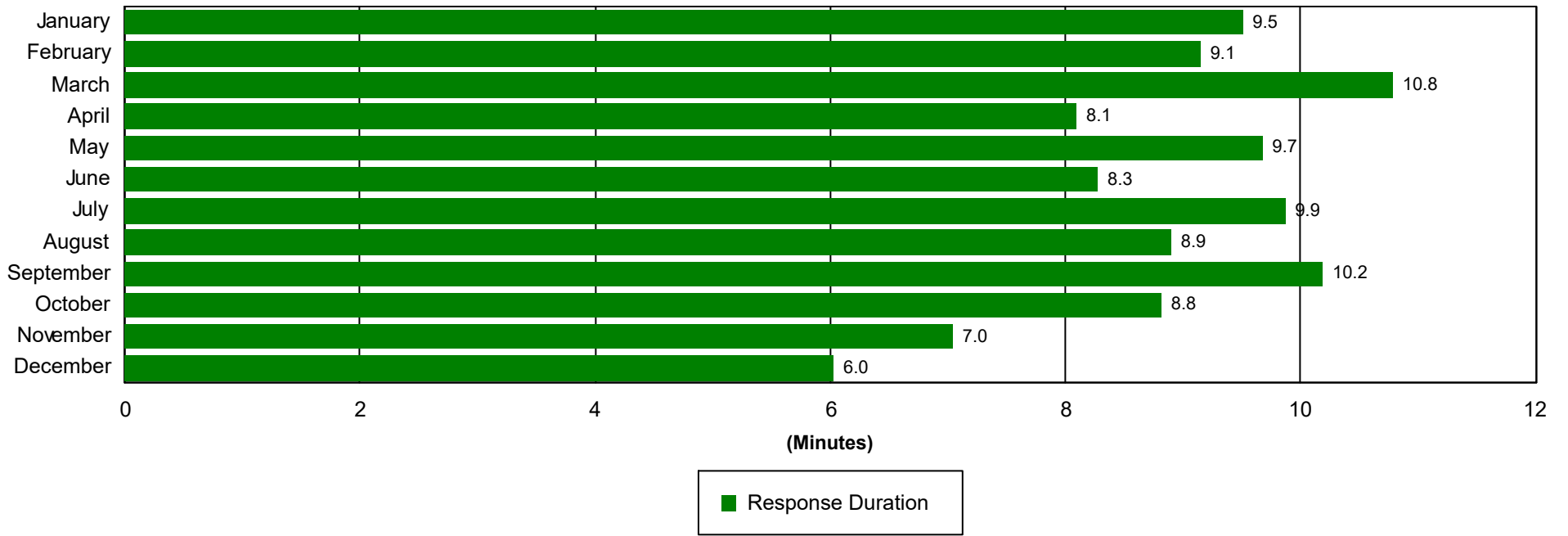
Departure Duration (min.): [Travel Lanes Cleared to Last Departure]

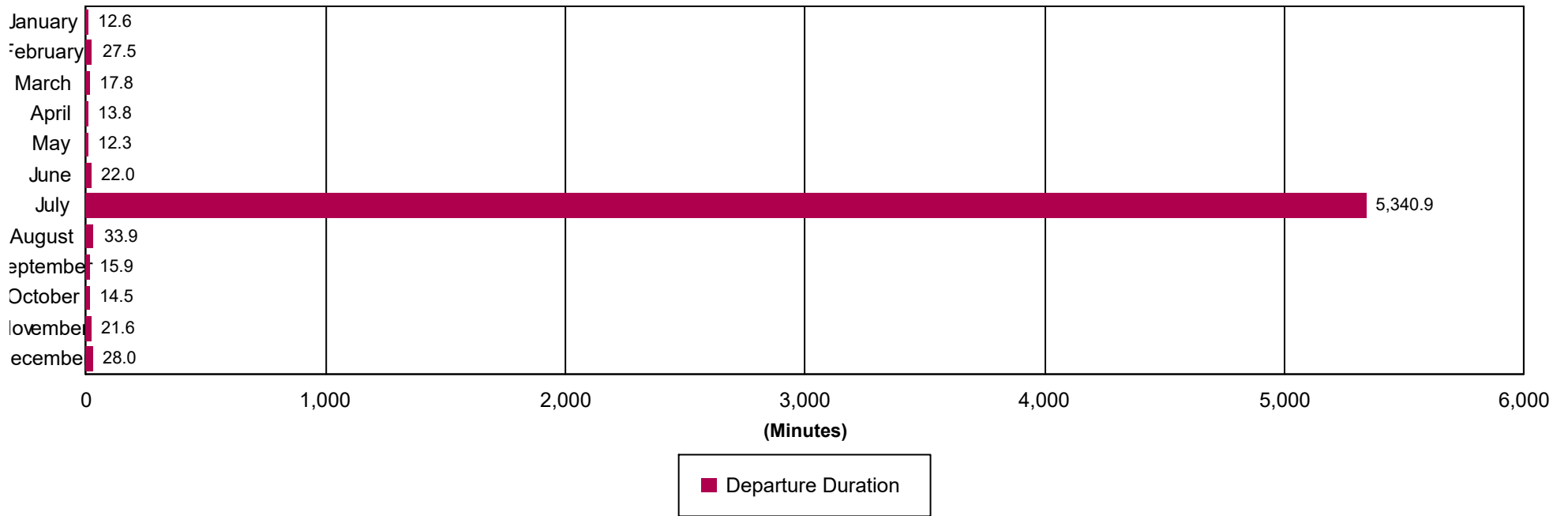
Roadway Clearance Duration (min.): [First Notif to Travel Lanes Cleared]

Incident Clearance Duration (min.): [First Notif to Last Departure]

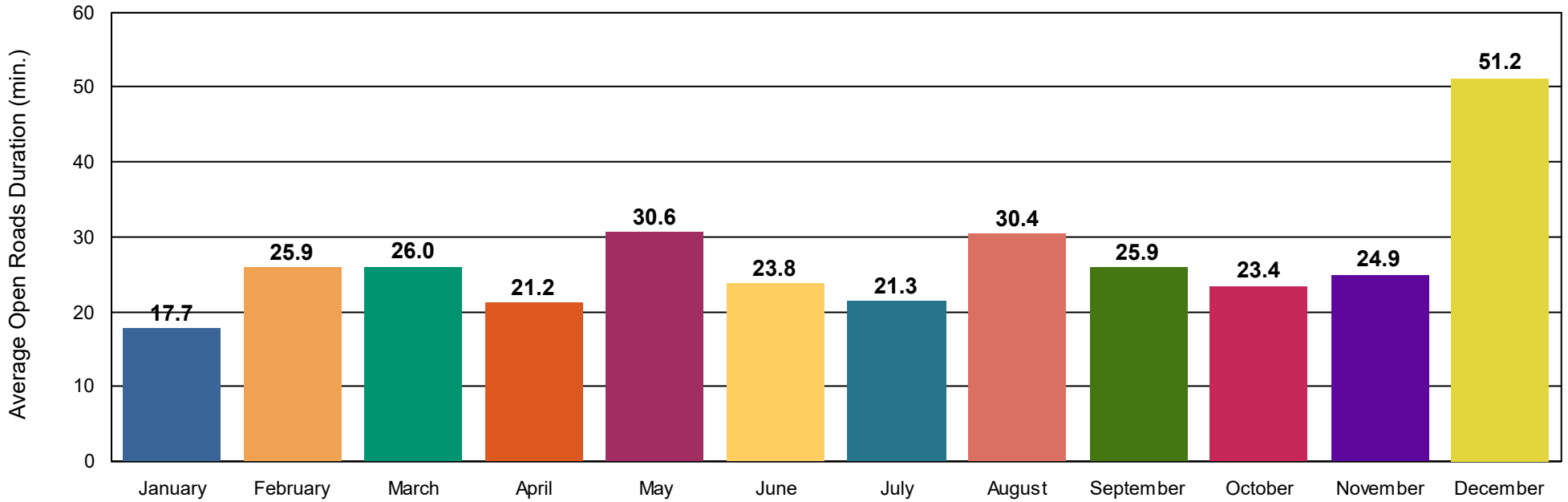
Incident Clearance Duration



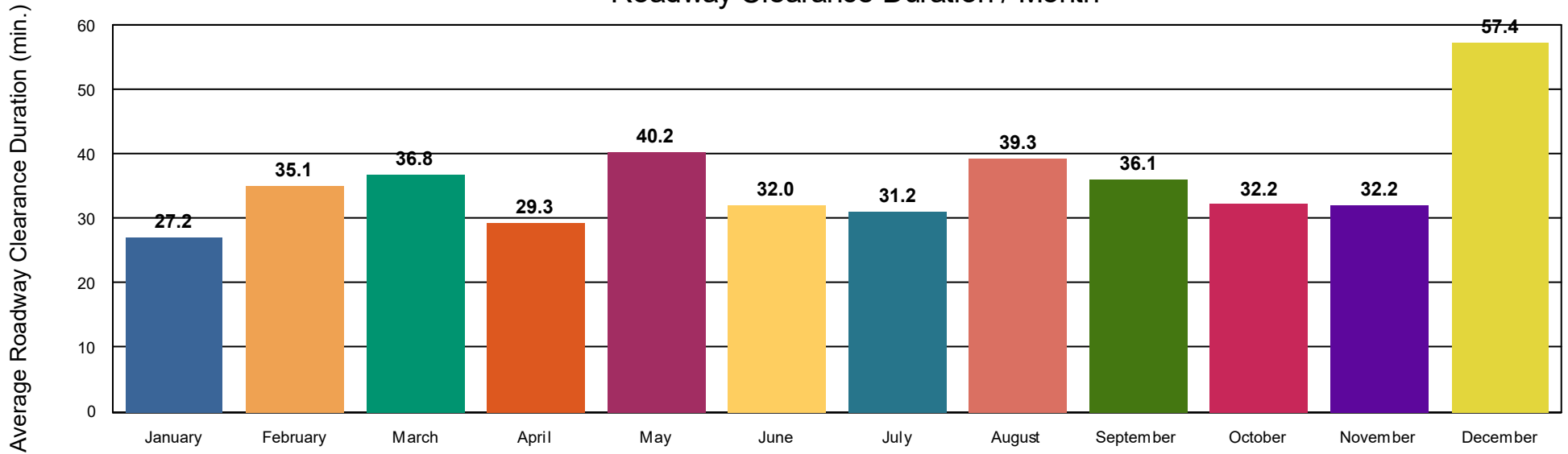




Open Roads Duration / Month



Roadway Clearance Duration / Month



Performance Measures Summary

Incidents with HELP Truck Response

	January	February	March	April	May	June	July	August	September	October	November	December	Total
Events included	653	624	687	597	690	723	788	736	654	685	497	472	7,806
Notification Duration (min.)*	0.0	0.0	0.0	0.0	0.0	0.0	0.0	0.0	0.0	0.0	0.0	0.0	0.0
Verification Duration (min.)	0.0	0.0	0.0	0.0	0.0	0.0	0.0	0.0	0.0	0.0	0.2	0.1	0.0
Response Duration (min.)	9.5	9.1	10.8	8.1	9.7	8.3	9.9	8.9	10.2	8.8	7.1	6.1	9.0
Open Roads Duration (min.)	17.7	25.9	26.0	21.2	30.6	23.8	21.3	30.4	25.9	23.4	22.0	50.6	26.0
Departure Duration (min.)	12.6	27.5	17.8	13.8	12.3	22.0	5,374.9	33.9	15.9	14.5	23.1	29.5	561.0
Roadway Clearance Duration (min.)	27.2	35.1	36.8	29.3	40.2	32.0	31.2	39.3	36.1	32.2	29.2	56.9	35.1
Incident Clearance Duration (min.)	39.8	62.6	54.5	43.0	52.6	54.0	5,406.1	73.2	52.0	46.8	52.3	86.3	596.0

Note:

Response Duration (min.): [\[First Notification to First Arrival\]](#)

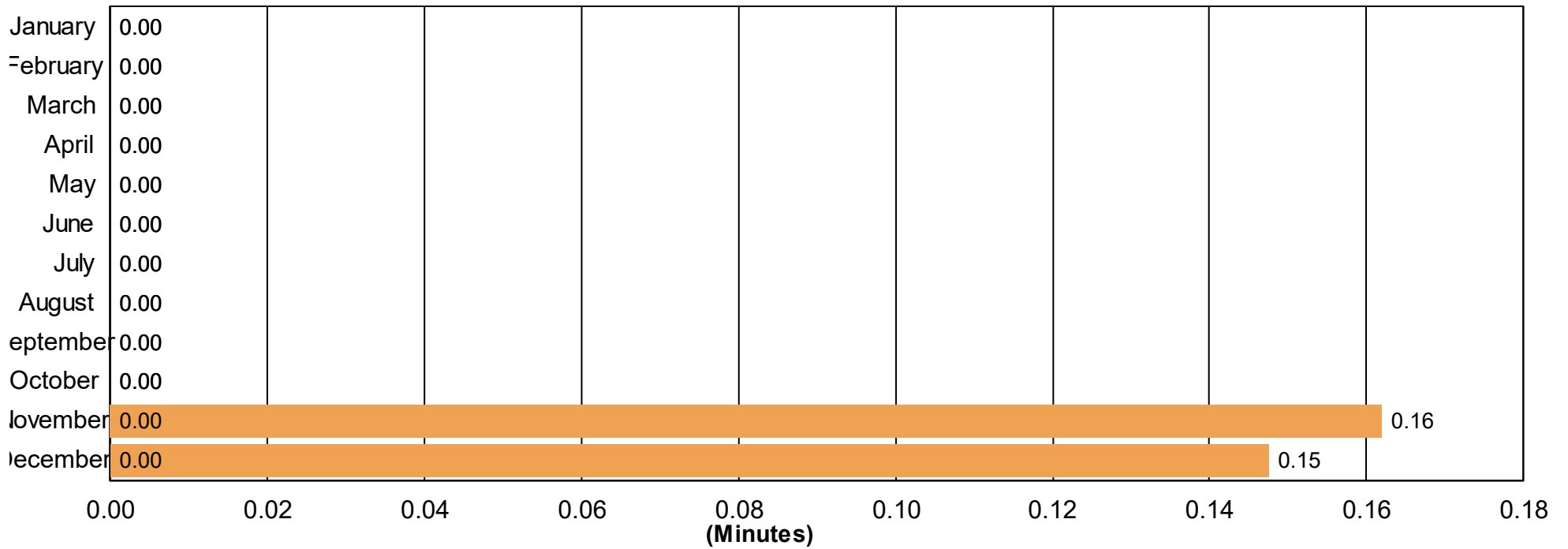
Open Roads Duration (min.): [\[First Arrival to Travel Lanes Cleared\]](#)

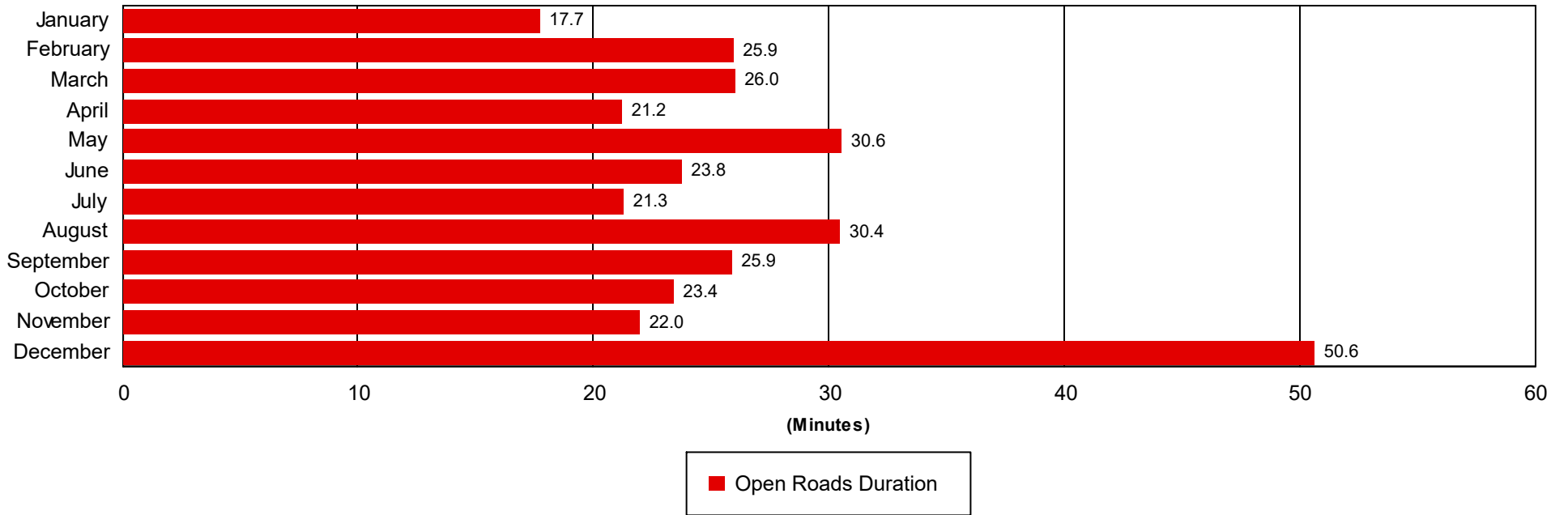
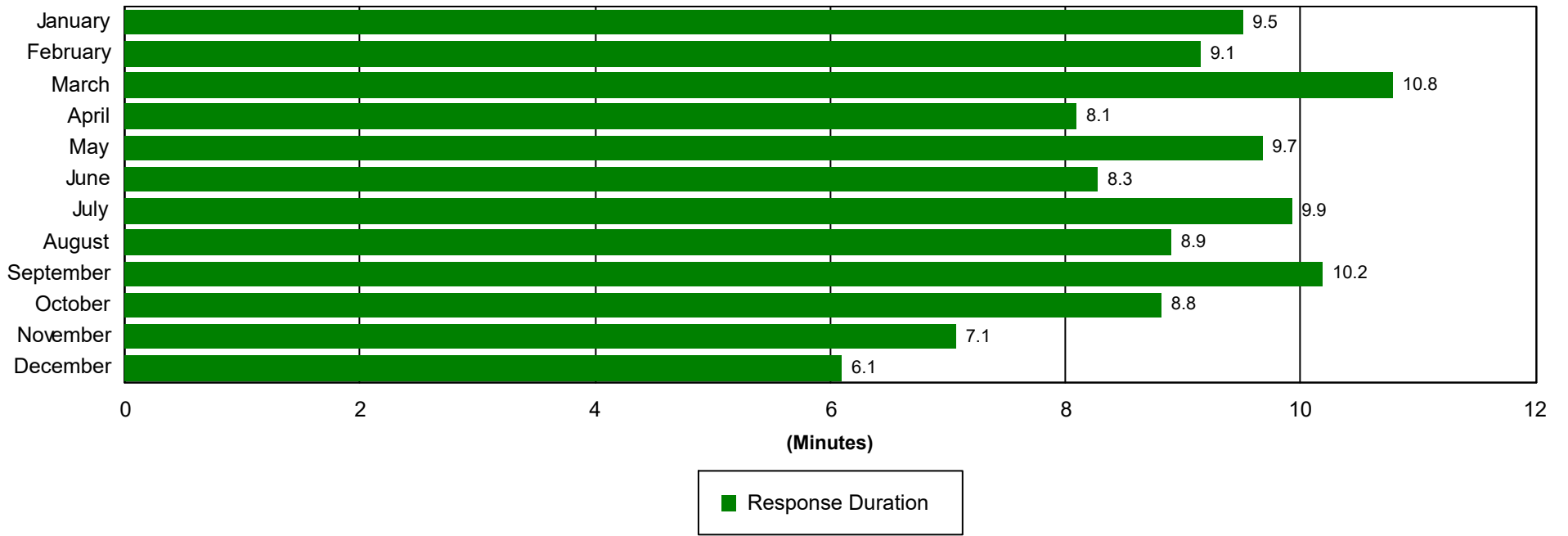
Departure Duration (min.): [\[Travel Lanes Cleared to Last Departure\]](#)

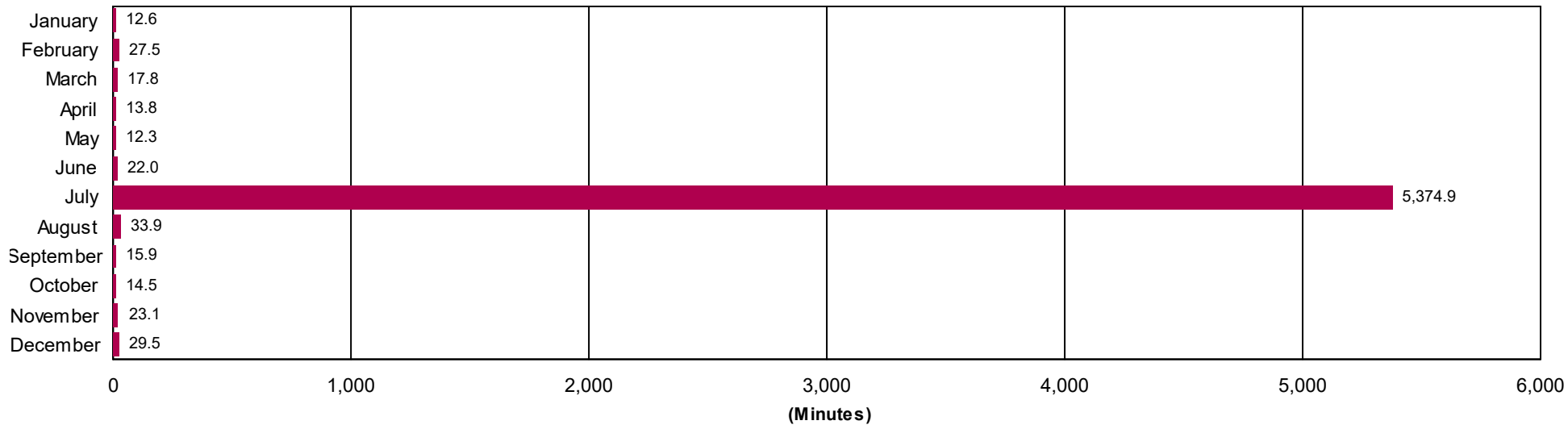
Roadway Clearance Duration (min.): [\[First Notif to Travel Lanes Cleared\]](#)

Incident Clearance Duration (min.): [\[First Notif to Last Departure\]](#)

Incident Clearance Duration

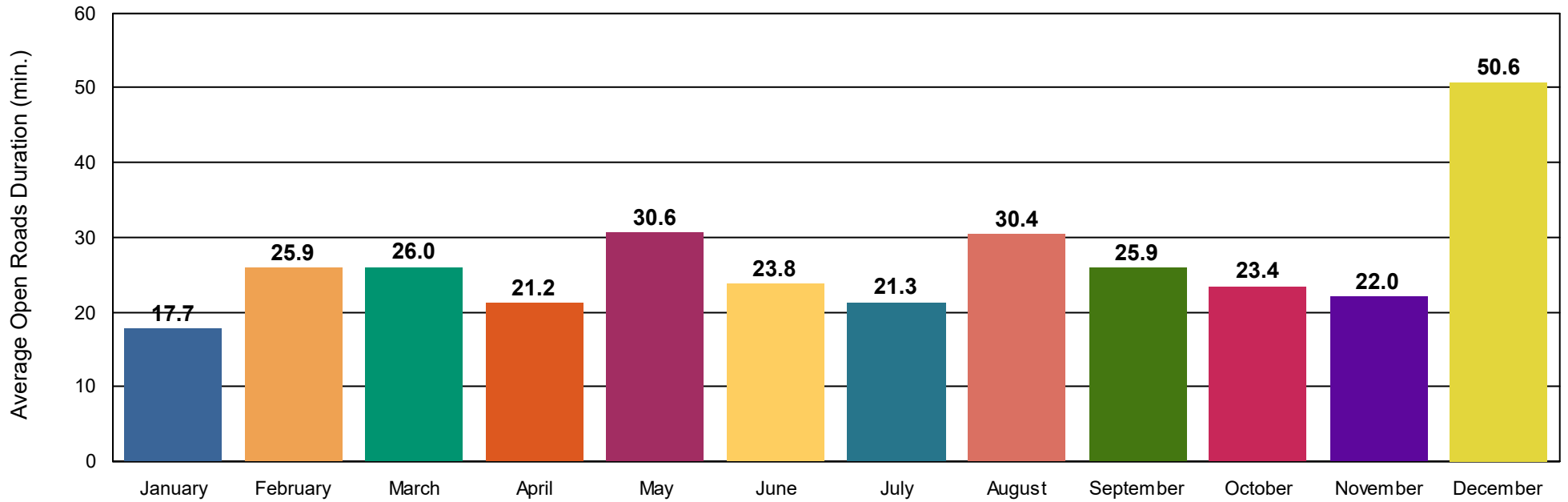




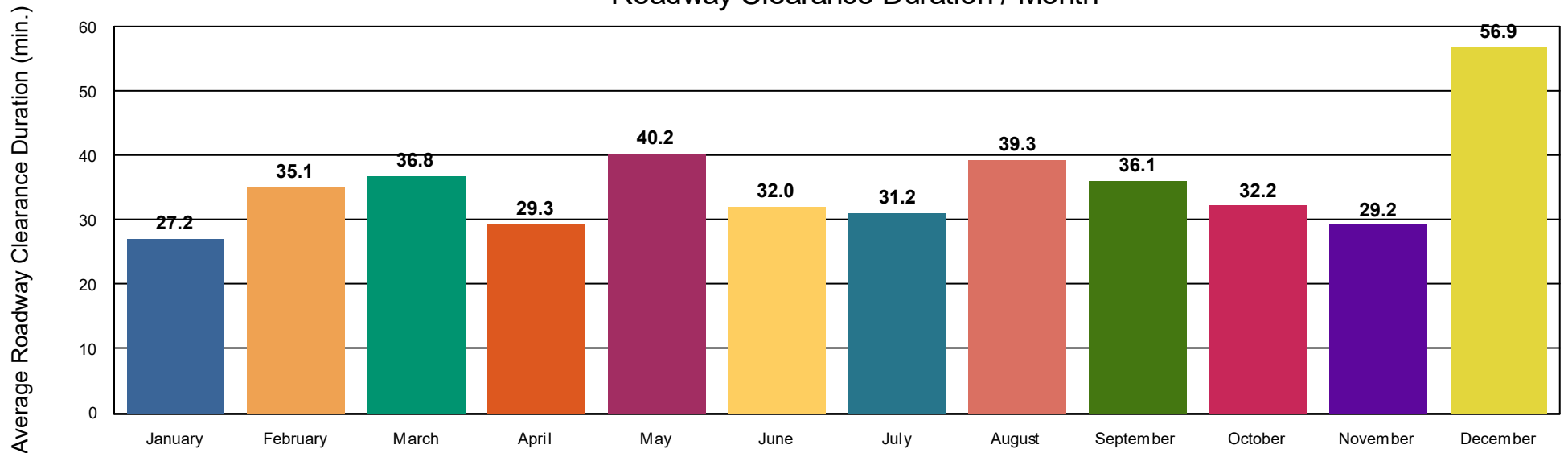


■ Departure Duration

Open Roads Duration / Month



Roadway Clearance Duration / Month



Performance Measures Summary

Incidents without HELP Truck Response

	January	February	March	April	May	June	July	August	September	October	November	December	Total
Events included	184	185	252	223	169	196	219	193	158	167	128	136	2,210
Notification Duration (min.)*							0.0				0.0	0.0	0.0
Verification Duration (min.)							0.0				0.8	0.1	0.4
Response Duration (min.)							2.9				6.8	5.7	6.0
Open Roads Duration (min.)							27.7				49.2	53.5	51.4
Departure Duration (min.)							1.4				8.7	22.4	17.4
Roadway Clearance Duration (min.)							30.6				56.8	59.4	57.8
Incident Clearance Duration (min.)							32.0				65.5	81.8	75.2

Note:

Response Duration (min.): [\[First Notification to First Arrival\]](#)

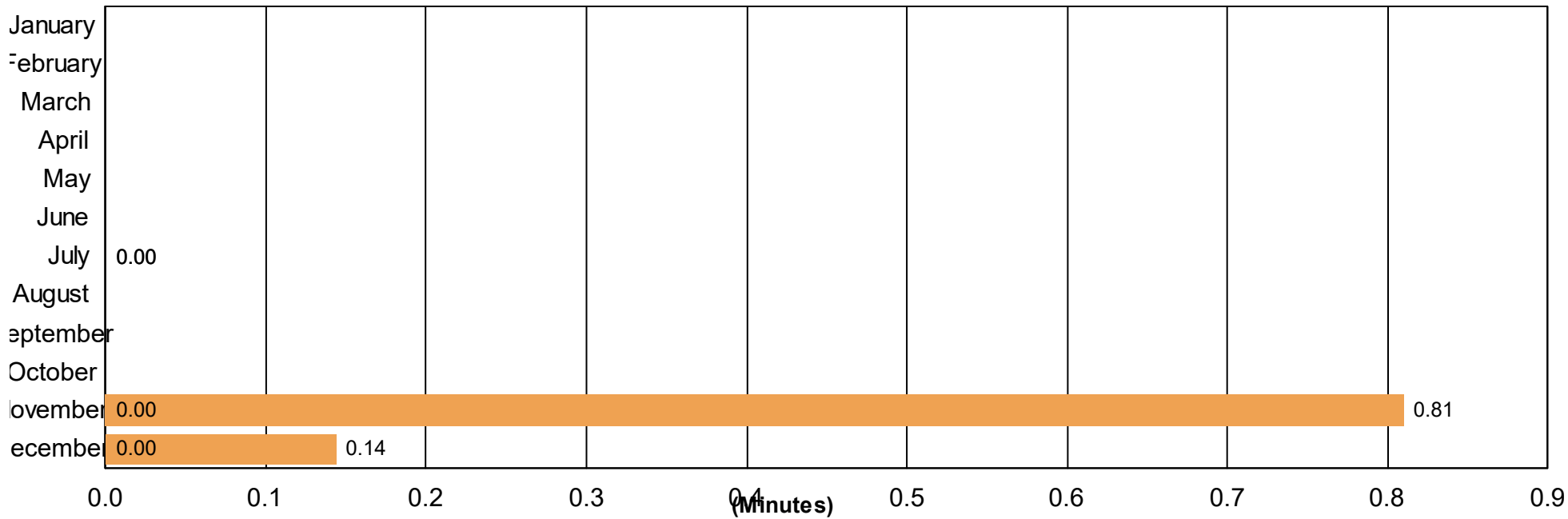
Open Roads Duration (min.): [\[First Arrival to Travel Lanes Cleared\]](#)

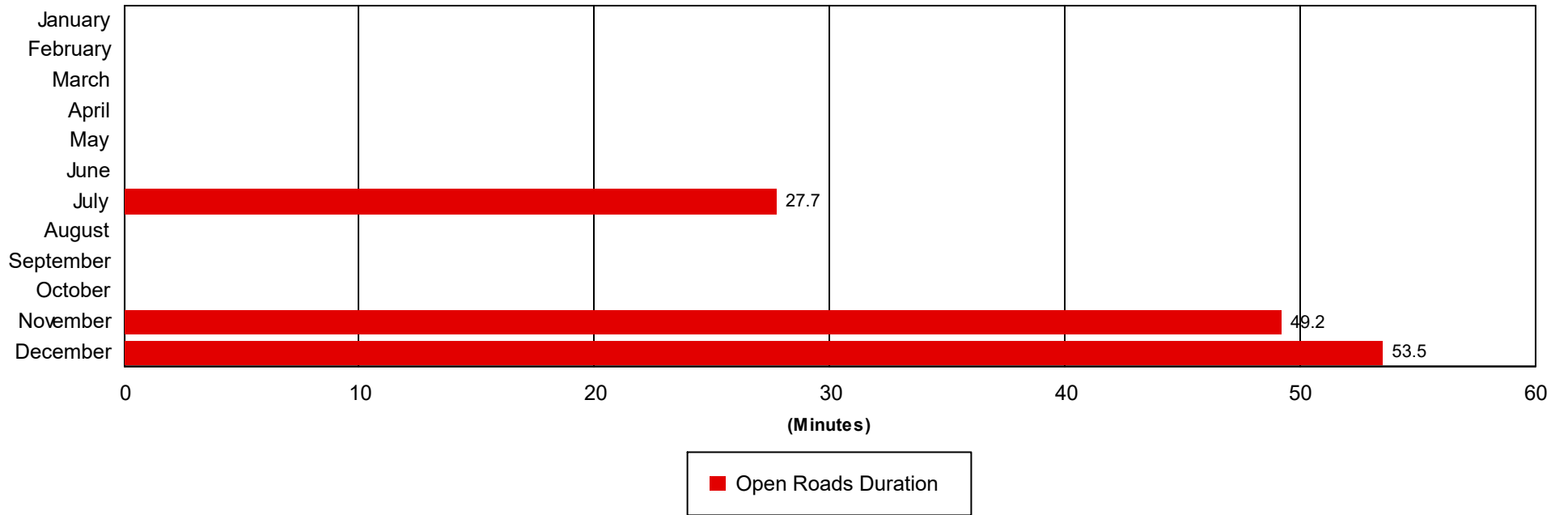
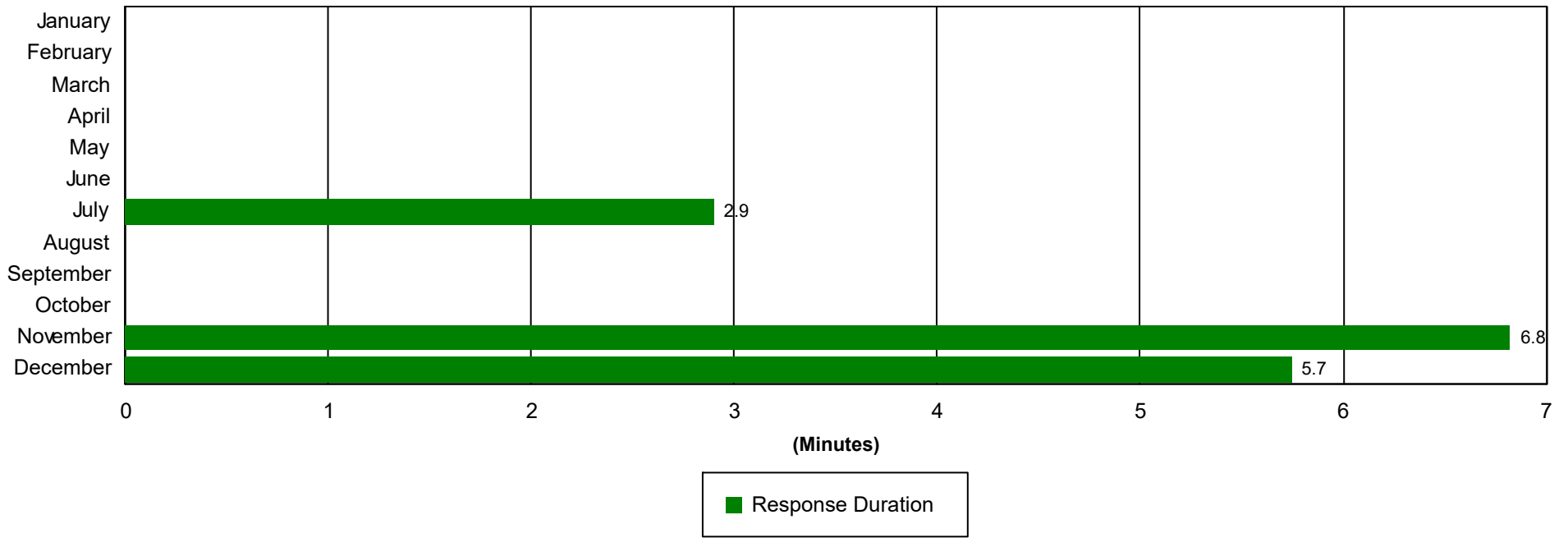
Departure Duration (min.): [\[Travel Lanes Cleared to Last Departure\]](#)

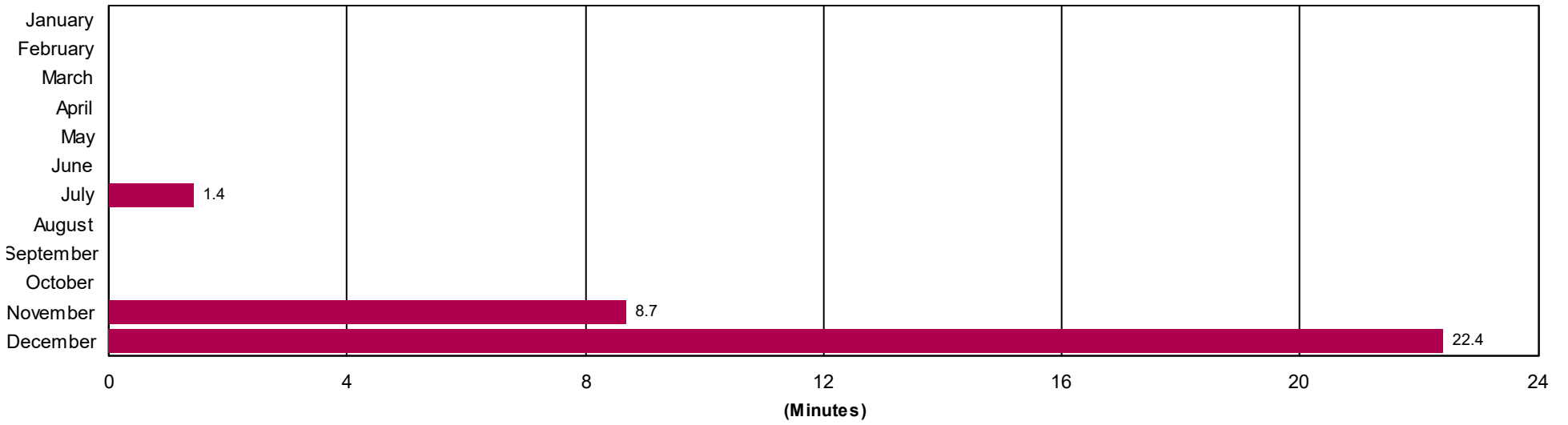
Roadway Clearance Duration (min.): [\[First Notif to Travel Lanes Cleared\]](#)

Incident Clearance Duration (min.): [\[First Notif to Last Departure\]](#)

Incident Clearance Duration

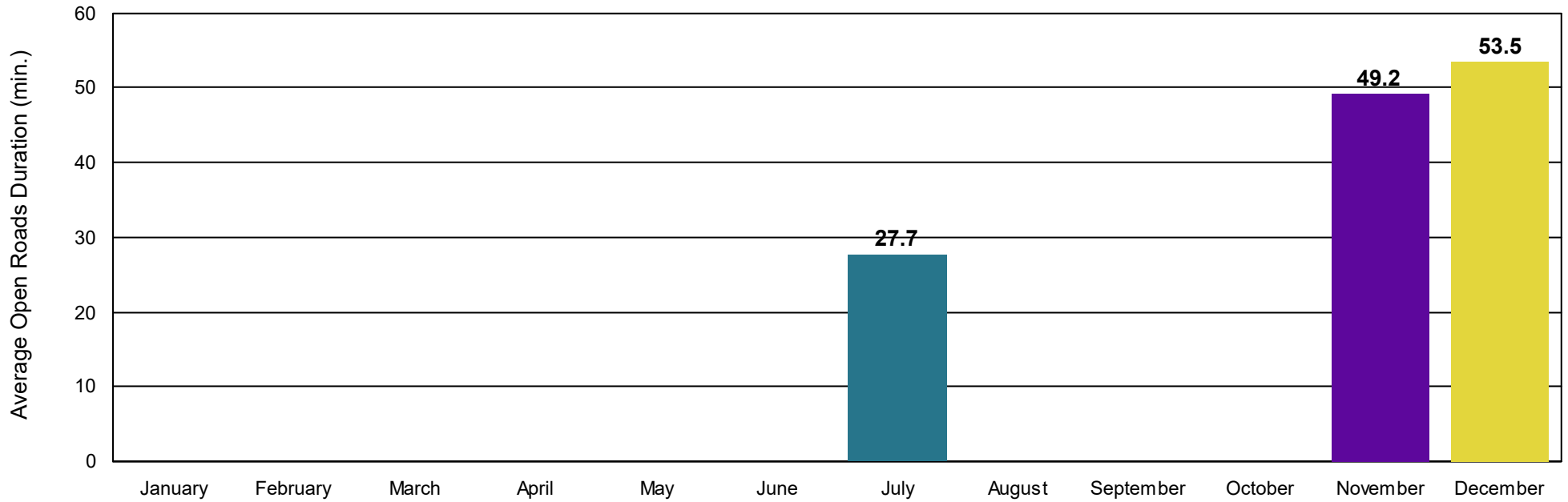




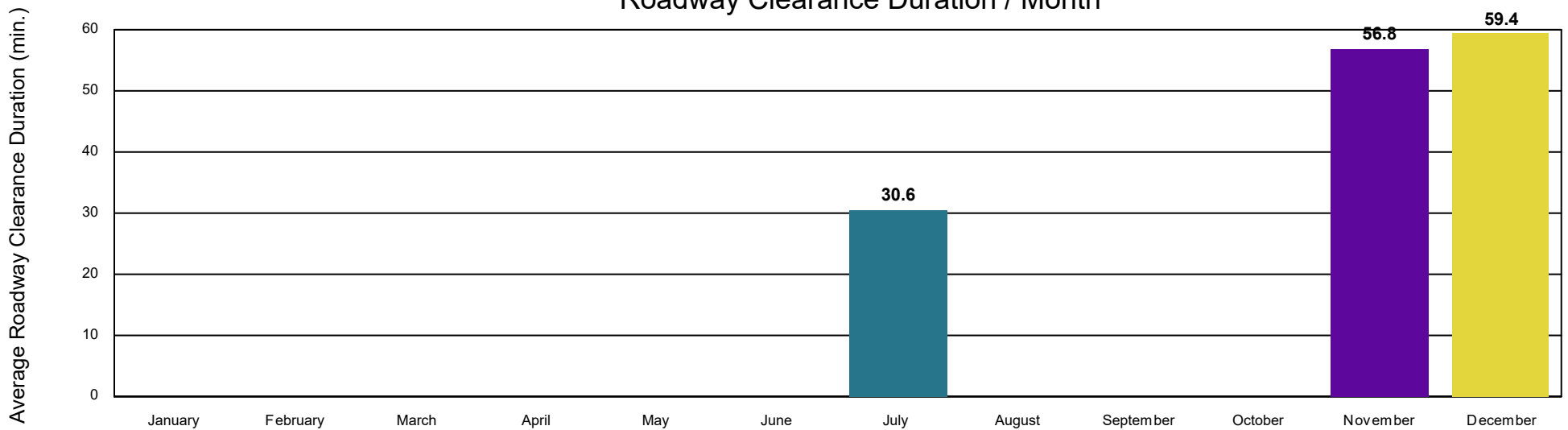


■ Departure Duration

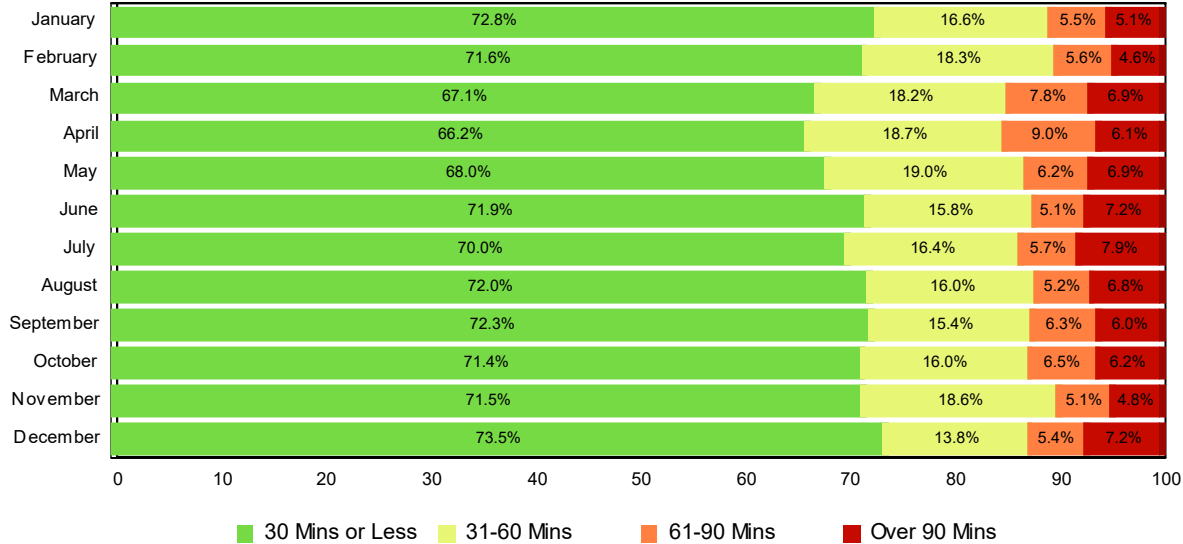
Open Roads Duration / Month



Roadway Clearance Duration / Month

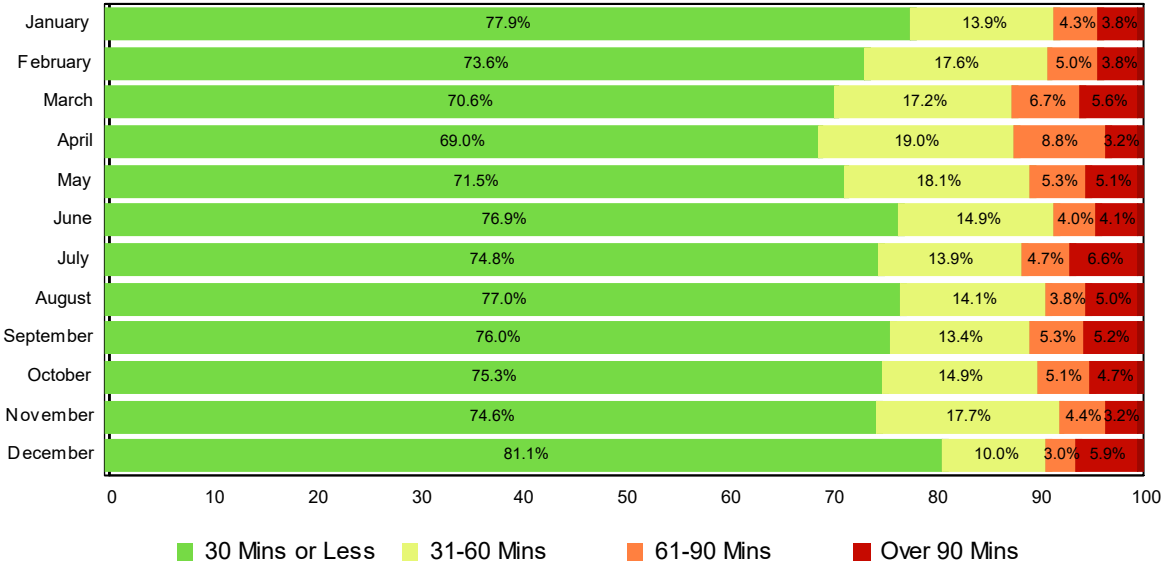


Lane Blockage Clearance Times - Overall



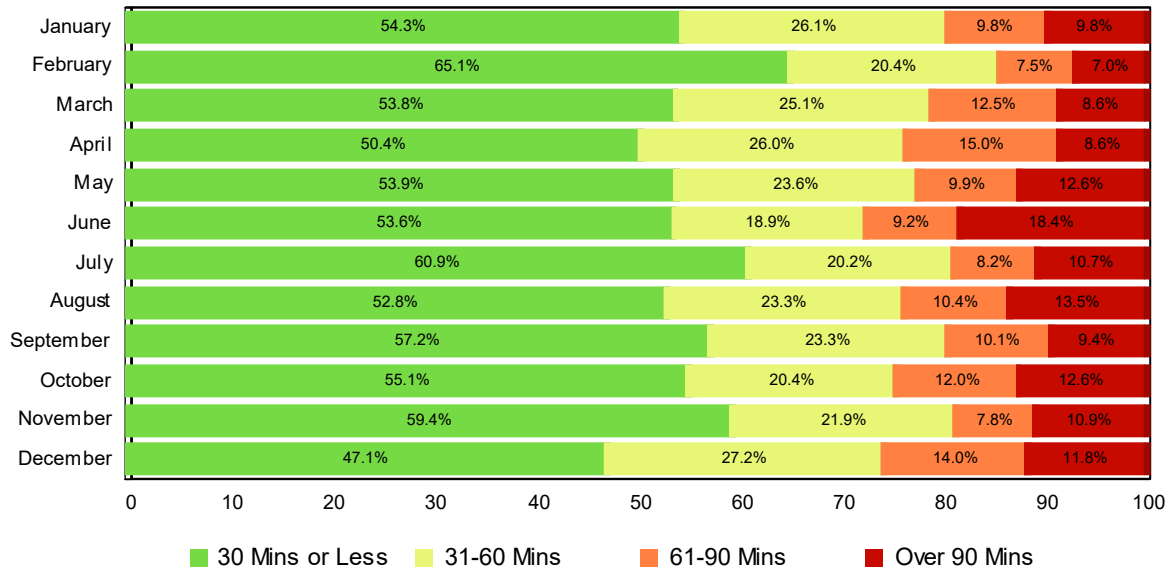
Month	30 Mins or Less	31-60 Mins	61-90 Mins	Over 90 Mins	Total # of Events
January	609	139	46	43	837
February	579	148	45	37	809
March	630	171	73	65	939
April	543	153	74	50	820
May	584	163	53	59	859
June	661	145	47	66	919
July	705	165	57	80	1,007
August	669	149	48	63	929
September	587	125	51	49	812
October	608	136	55	53	852
November	447	116	32	30	625
December	447	84	33	44	608
Total # of Events	7,069	1,694	614	639	10,016

Lane Blockage Clearance Times - with HELP Truck Response



Month	30 Mins or Less	31-60 Mins	61-90 Mins	Over 90 Mins	Total # of Events
January	509	91	28	25	653
February	459	110	31	24	624
March	488	113	46	40	687
April	419	109	49	20	597
May	493	125	37	35	690
June	556	108	29	30	723
July	587	111	38	52	788
August	567	104	28	37	736
September	497	88	35	34	654
October	516	102	35	32	685
November	371	88	22	16	497
December	383	47	14	28	472
Total # of Events	5,845	1,196	392	373	7,806

Lane Blockage Clearance Times - without HELP Truck Response



Month	30 Mins or Less	31-60 Mins	61-90 Mins	Over 90 Mins	Total # of Events
January	100	48	18	18	184
February	120	38	14	13	185
March	142	58	27	25	252
April	124	44	25	30	223
May	91	38	16	24	169
June	105	37	18	36	196
July	118	54	19	28	219
August	102	45	20	26	193
September	90	37	16	15	158
October	92	34	20	21	167
November	76	28	10	14	128
December	64	37	19	16	136
Total # of Events	1,224	498	222	266	2,210

All Incidents with Travel Lane Blockage and HELP Truck Response

No. of Lanes Blocked	%	Count	%	Count	%	Count	%	Count	Avg Clear Time (Min)
1	83	4355	94	4916	97	5101	3	137	22
2	64	1193	86	1616	92	1735	8	141	39
3	46	214	77	359	89	417	11	49	48
4	35	65	64	119	79	147	21	39	76
5	48	16	76	25	82	27	18	6	84
6	17	1	83	5	83	5	17	1	48
7	100	1	100	1	100	1	0	0	0
Totals	75	5,845	90	7,041	95	7,433	5	373	29

<=30 Mins

<=60 Mins

<=90 Mins

>90 Mins

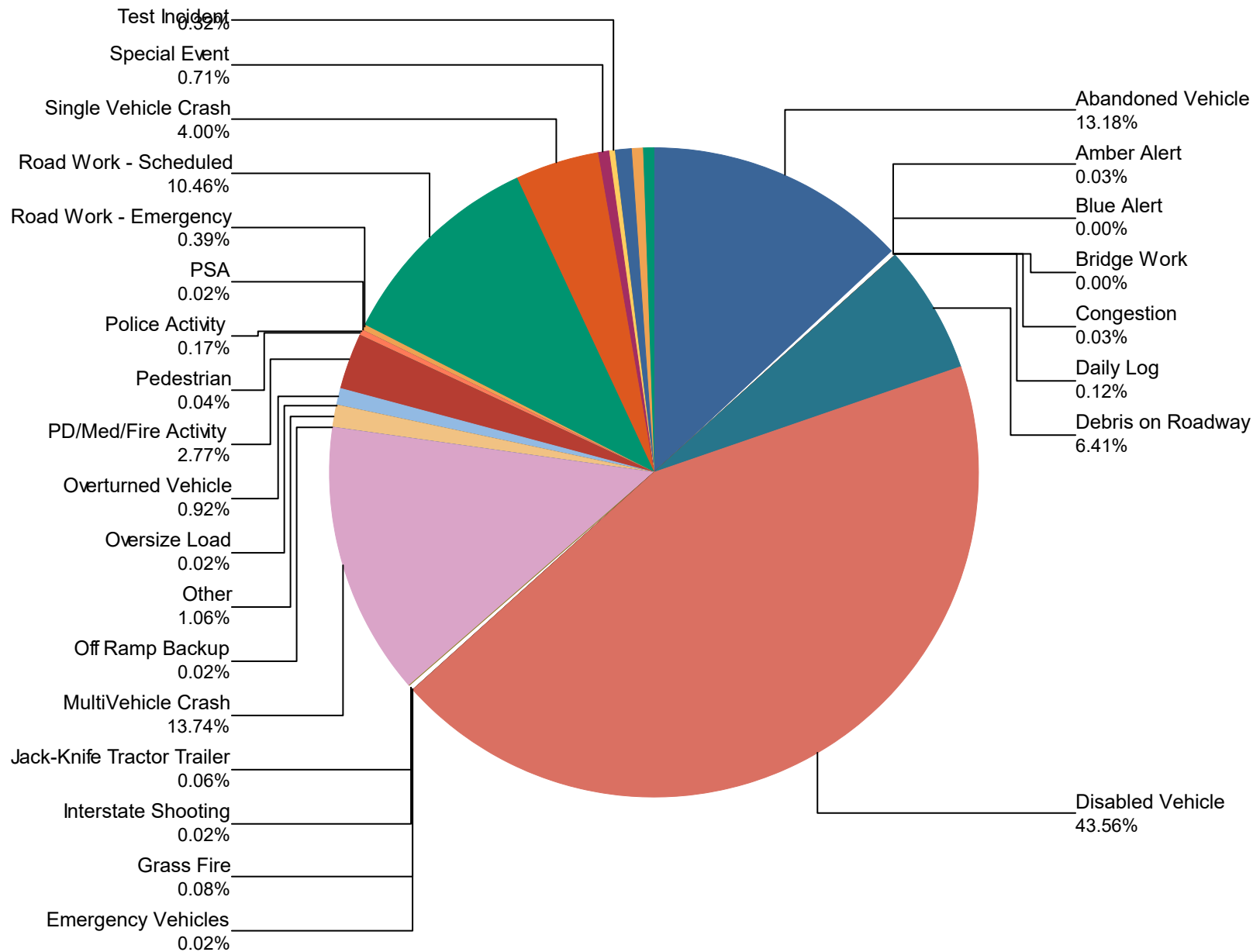
Travel Lane Blockage Events- Roadway

Roadway	Lane Blockage Events Count	All Incidents	% of Incidents with Lane Blockage
		13	
I0024	3152	11,879	26.5
I0024E1	2	2	100.0
I0040	2855	10,076	28.3
I0065	2506	10,274	24.4
I0440	437	1,781	24.5
I0840	70	295	23.7
Region 3 TMC	0	9	0.0
SR001	14	17	82.4
SR006	119	291	40.9
SR007	2	2	100.0
SR010	13	15	86.7
SR011	12	12	100.0
SR012	8	9	88.9
SR013	1	1	100.0
SR015	7	11	63.6
SR016	3	3	100.0
SR020	2	2	100.0
SR024	9	10	90.0
SR025	8	8	100.0
SR026	2	2	100.0
SR045	4	4	100.0
SR046	1	1	100.0
SR048	4	4	100.0
SR049	11	11	100.0
SR050	5	6	83.3
SR052	4	4	100.0
SR056	1	1	100.0
SR064	3	3	100.0

SR065	15	22	68.2
SR076	12	12	100.0
SR080	1	1	100.0
SR082	1	1	100.0
SR099	3	4	75.0
SR100	2	5	40.0
SR102	1	1	100.0
SR106	5	10	50.0
SR109	7	8	87.5
SR110	1	1	100.0
SR112	3	8	37.5
SR120	0	1	0.0
SR129	0	1	0.0
SR130	4	4	100.0
SR141	8	9	88.9
SR147	0	1	0.0
SR149	2	2	100.0
SR155	706	2,737	25.8
SR166	1	1	100.0
SR171	6	6	100.0
SR227	3	3	100.0
SR230	1	1	100.0
SR233	3	3	100.0
SR237	1	1	100.0
SR240	1	1	100.0
SR245	1	1	100.0
SR247	4	4	100.0
SR248	1	1	100.0
SR249	1	1	100.0
SR251	1	1	100.0
SR252	1	1	100.0
SR253	1	1	100.0
SR254	10	11	90.9

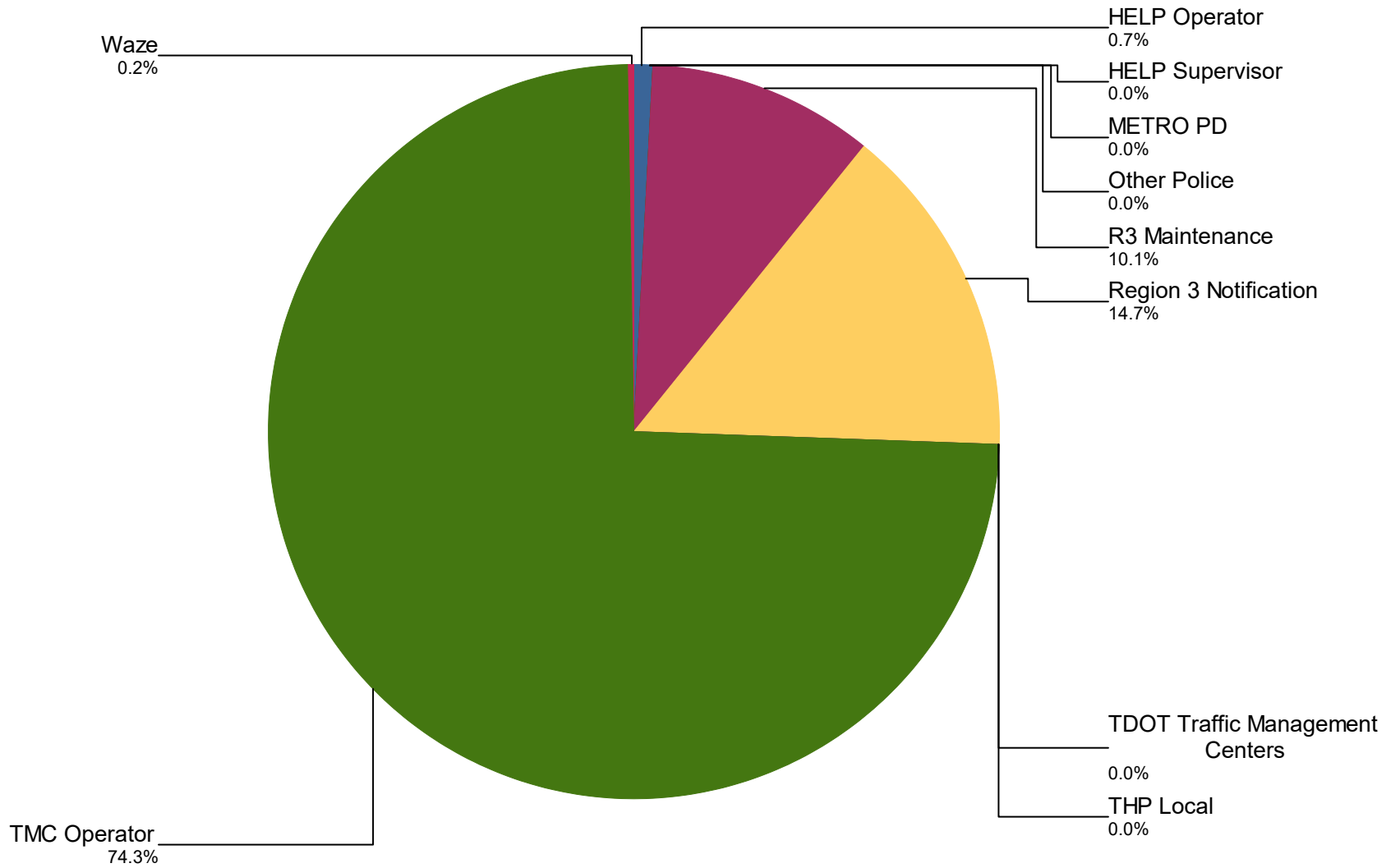
SR255	9	11	81.8
SR257	2	2	100.0
SR258	2	2	100.0
SR261	1	1	100.0
SR265	1	1	100.0
SR266	5	5	100.0
SR269	2	2	100.0
SR271	1	1	100.0
SR275	2	2	100.0
SR374	1	1	100.0
SR376	2	2	100.0
SR386	84	230	36.5
SR396	2	2	100.0
SR452	1	1	100.0
All Roadways	10,177	37,874	26.9

Percentage of Event Types for All Events in Current Year



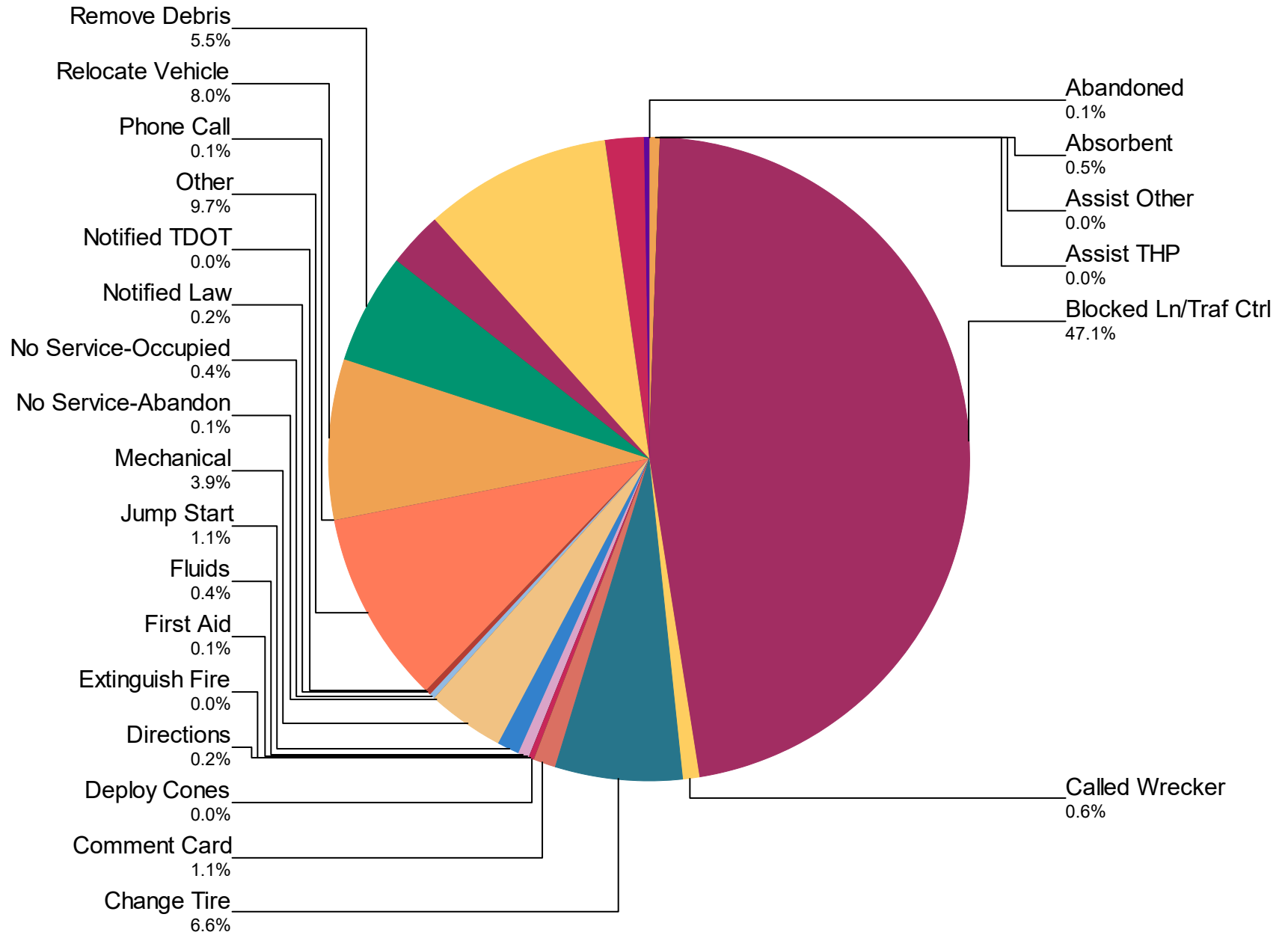
	January	February	March	April	May	June	July	August	September
PSA	0	0	0	0	0	0	7	0	0
Road Work - Emergency	11	21	19	13	13	14	34	9	13
Road Work - Scheduled	245	386	236	289	332	363	624	497	461
Single Vehicle Crash	109	107	165	250	177	133	178	158	113
Special Event	5	7	27	45	32	32	50	29	33
Test Incident	0	0	0	0	0	0	32	0	0
Towing	0	0	0	0	0	0	0	0	0
Unknown	23	26	20	28	16	14	57	0	10
Vehicle Fire	14	11	20	32	36	24	25	17	13
Weather	17	20	19	9	22	12	28	21	21
Total	3,473	3,293	3,338	3,272	3,414	3,750	5,485	3,805	3,572

Incidents by Detection Source



Notifier Agency	January	February	March	April	May	June	July	August	September	October
HELP Operator	0	0	0	1	1	0	39	0	0	1
HELP Supervisor	0	0	0	1	0	0	0	0	0	0
METRO PD	0	0	0	0	0	0	1	0	0	0
Other Police	0	0	0	0	0	0	0	0	0	0
R3 Maintenance	374	359	234	356	428	499	786	519	339	312
Region 3 Notification	718	494	703	532	486	639	731	555	613	621
TDOT Traffic Management Centers	0	0	0	0	0	0	1	0	0	0
THP Local	0	0	0	2	0	0	0	0	0	0
TMC Operator	2,381	2,440	2,401	2,380	2,499	2,612	3,926	2,731	2,620	2,316
Waze	0	0	0	0	0	0	1	0	0	0
Total	3,473	3,293	3,338	3,272	3,414	3,750	5,485	3,805	3,572	3,250

Percentage of Activity Types for HELP Truck Activities in Current Year



Activity Types for All Activities	January	February	March	April	May	June	July	August	Septemb er
Abandoned	0	0	0	0	0	0	26	0	0
Absorbent	20	15	7	6	17	10	12	19	10
Assist Other	0	0	0	0	0	0	2	0	0
Assist THP	0	0	0	2	0	0	1	0	0
Blocked Ln/Traf Ctrl	1,469	1,245	1,186	1,236	1,319	1,559	1,874	1,274	1,257
Called Wrecker	40	18	17	19	23	47	22	14	14
Change Tire	199	204	167	198	215	244	284	196	186
Comment Card	22	18	7	13	16	24	79	57	44
Deploy Cones	0	0	0	0	0	0	0	0	0
Directions	5	6	5	5	7	6	8	3	7
Extinguish Fire	3	1	2	0	1	1	0	0	0
First Aid	1	2	2	2	3	6	1	3	4

	January	February	March	April	May	June	July	August	September
Fluids	7	4	6	2	10	35	32	16	13
Jump Start	57	45	27	24	29	29	33	22	34
Mechanical	159	103	101	103	126	133	153	130	132
No Service-Abandon	0	0	1	3	0	1	11	0	2
No Service-Occupied	24	16	12	11	19	13	21	5	5
Notified Law	6	7	4	3	5	2	16	9	5
Notified TDOT	0	0	1	0	0	1	4	0	1
Other	396	302	264	326	330	440	497	332	327
Phone Call	7	5	5	5	2	7	7	1	3
Relocate Vehicle	291	291	241	173	212	221	271	244	251
Remove Debris	144	126	162	197	207	186	227	182	154
Secure Load	2	1	1	0	4	7	2	1	1
Supply Fuel	134	85	61	73	68	72	97	69	76

	January	February	March	April	May	June	July	August	September
Tag Abandoned	320	239	232	224	250	285	372	282	274
Tire	0	0	0	0	0	0	20	0	0
Transported	10	3	4	3	4	6	10	4	6
Unable to Locate	2	0	0	5	0	1	3	0	0
Welfare Check	0	0	0	0	0	0	42	0	0
Wrecker Towed	2	5	4	5	8	5	7	3	2
Total	3,320	2,741	2,519	2,638	2,875	3,341	4,134	2,866	2,808

DMS Duration

	April	May	June	July	August	October	November	December
Avg % ON Time	0.5	56.7	63.7	61.9	142.1	25.8	38.6	35.6
Avg Post Time (hr)	2.2	36.1	72.5	5.5	245.6	31.4	0.9	0.5
Avg Messages Per Sign	1.5	11.7	6.3	83.1	4.3	6.1	319.4	522.7
Total Messages Posted	193	1,498	810	10,643	551	780	40,889	66,908