

Includes All Responders

Reporting Period: January 1, 2021 to December 31, 2021

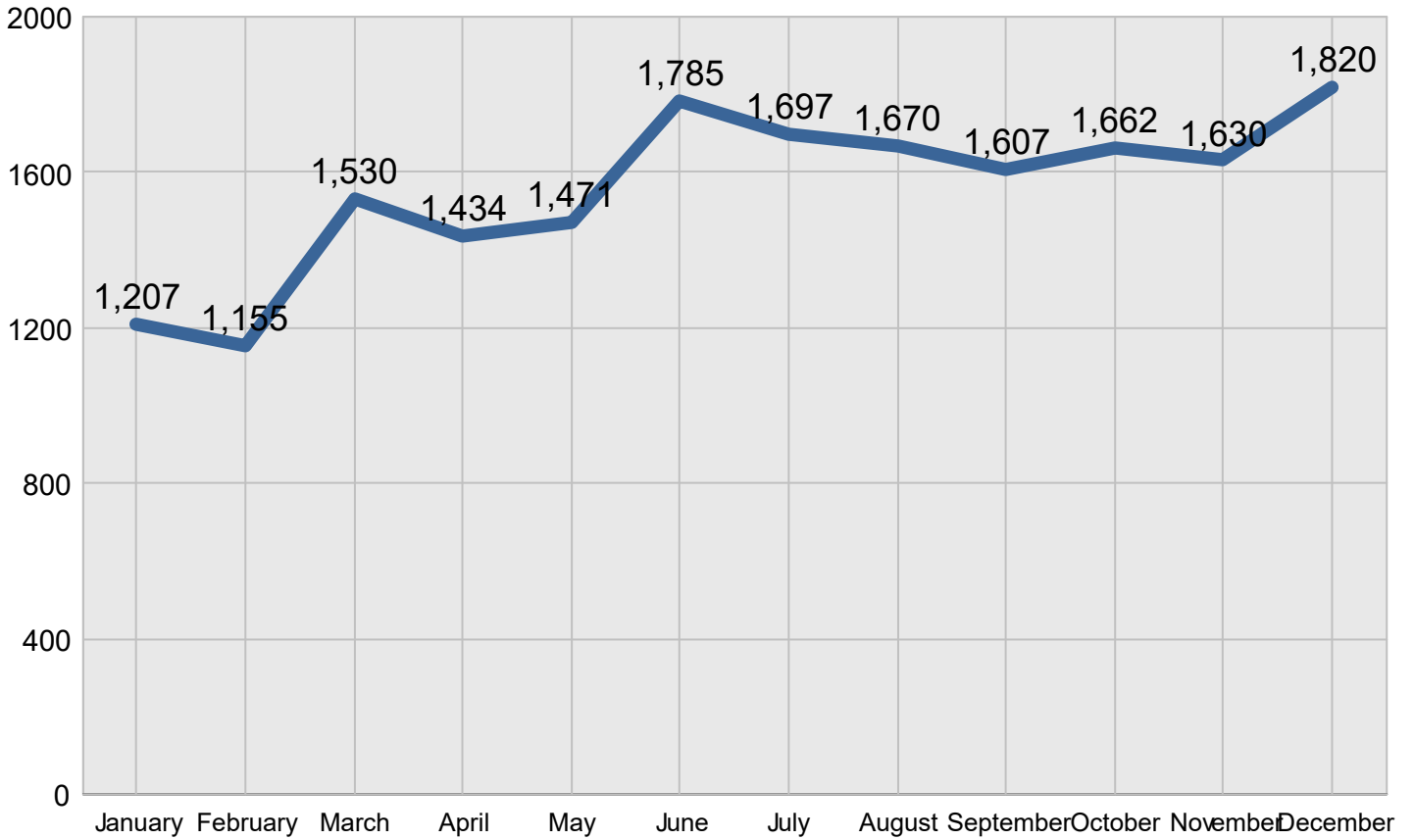
Region 2

Created on: June 15, 2022 3:31 pm County: All Counties Report Template version 2.0

Total Incidents Managed This Year 18,668

Incidents Managed

Incidents Managed - Monthly



Performance Measures Summary

Incidents Overall Response

	January	February	March	April	May	June	July	August	September	October	November	December	Total
Events included	240	240	354	302	334	383	354	378	338	312	377	344	3,956
Notification Duration (min.)*	0.0	0.0	0.0	0.0	0.0	0.0	0.0	0.0	0.0	0.0	0.0	0.0	0.0
Verification Duration (min.)	0.0	0.0	0.2	0.0	0.0	0.1	0.0	0.0	0.1	0.0	0.5	0.5	0.1
Response Duration (min.)	7.0	9.5	7.3	7.8	6.8	6.7	12.0	8.4	9.0	12.0	7.4	8.8	8.6
Open Roads Duration (min.)	29.5	35.5	42.4	26.3	22.4	34.4	47.9	982.6	113.5	35.8	44.1	28.2	136.2
Departure Duration (min.)	45.3	21.0	21.6	22.3	30.6	31.6	28.9	42.8	31.8	58.2	27.1	33.0	32.9
Roadway Clearance Duration (min.)	36.5	45.0	49.8	34.1	29.2	41.2	59.8	991.0	122.5	47.8	52.0	37.6	144.9
Incident Clearance Duration (min.)	81.8	66.0	71.4	56.4	59.8	72.8	88.7	1,033.8	154.4	106.0	79.1	70.6	177.8

* THP data is not available for Notification Duration

Note:

Response Duration (min.): [First Notification to First Arrival]

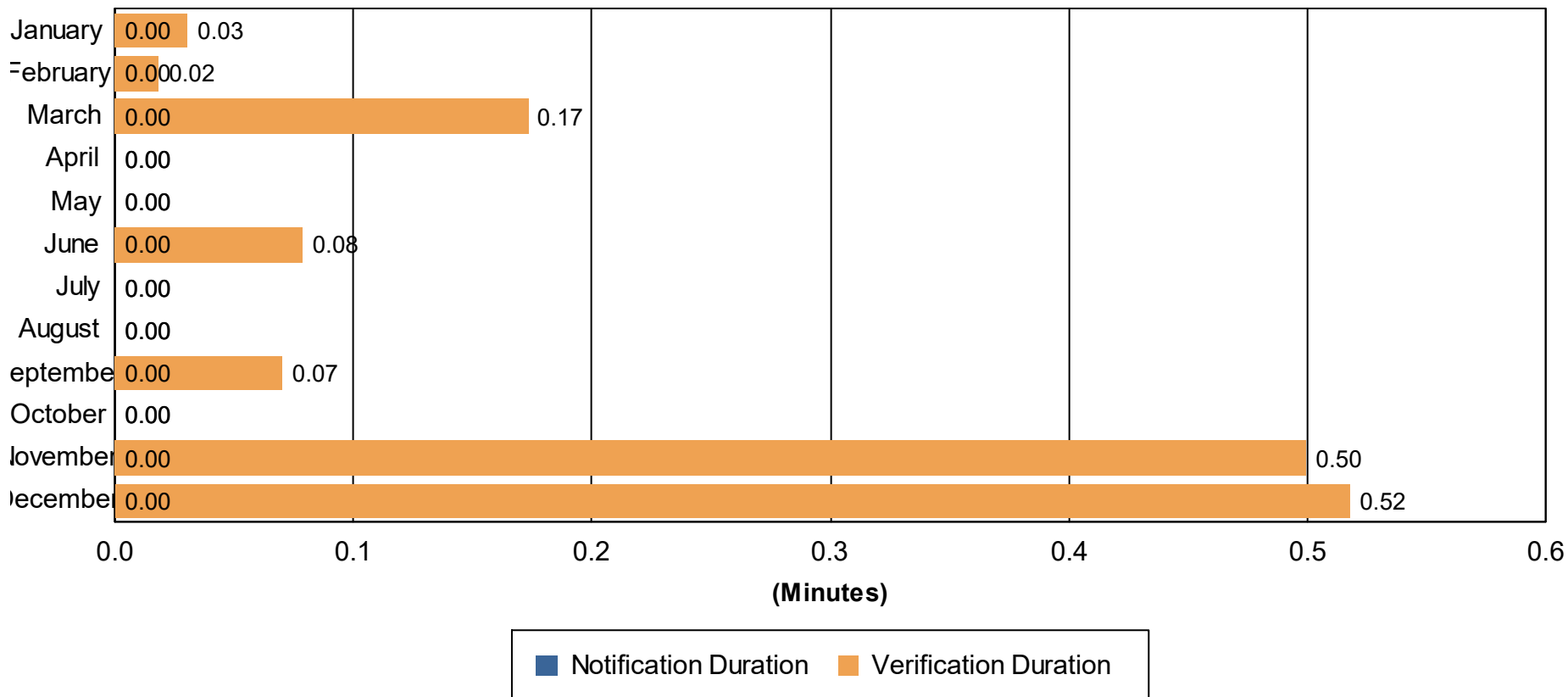
Open Roads Duration (min.): [First Arrival to Travel Lanes Cleared]

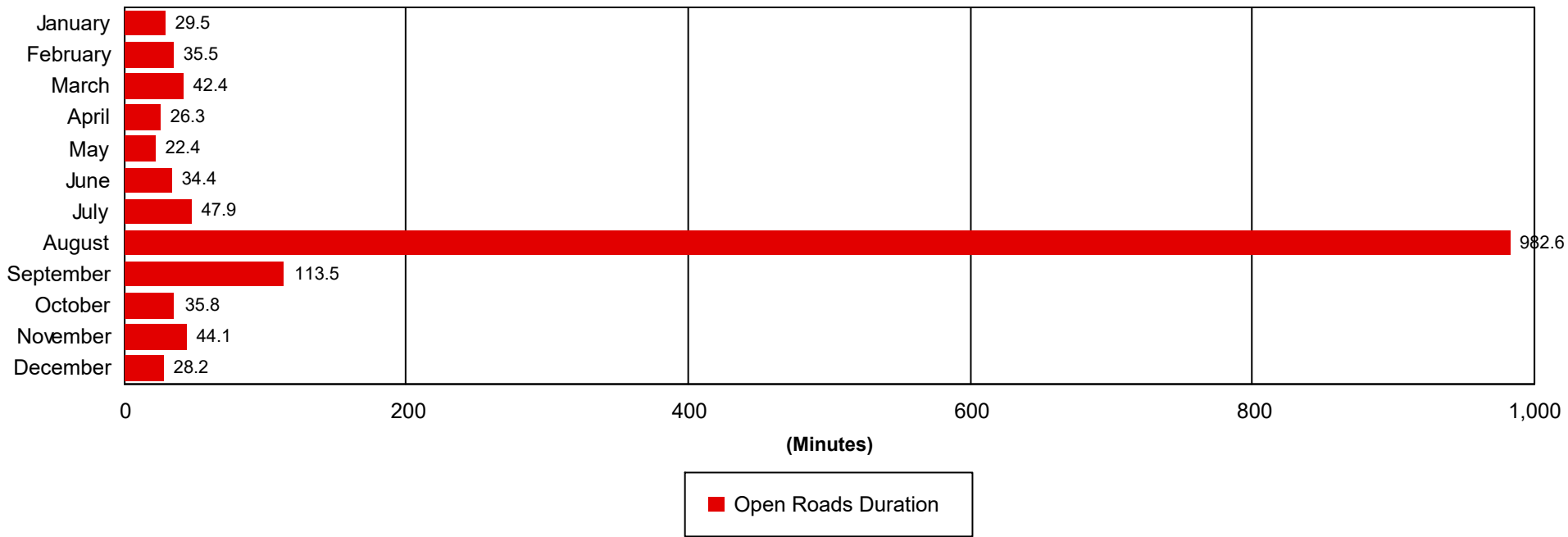
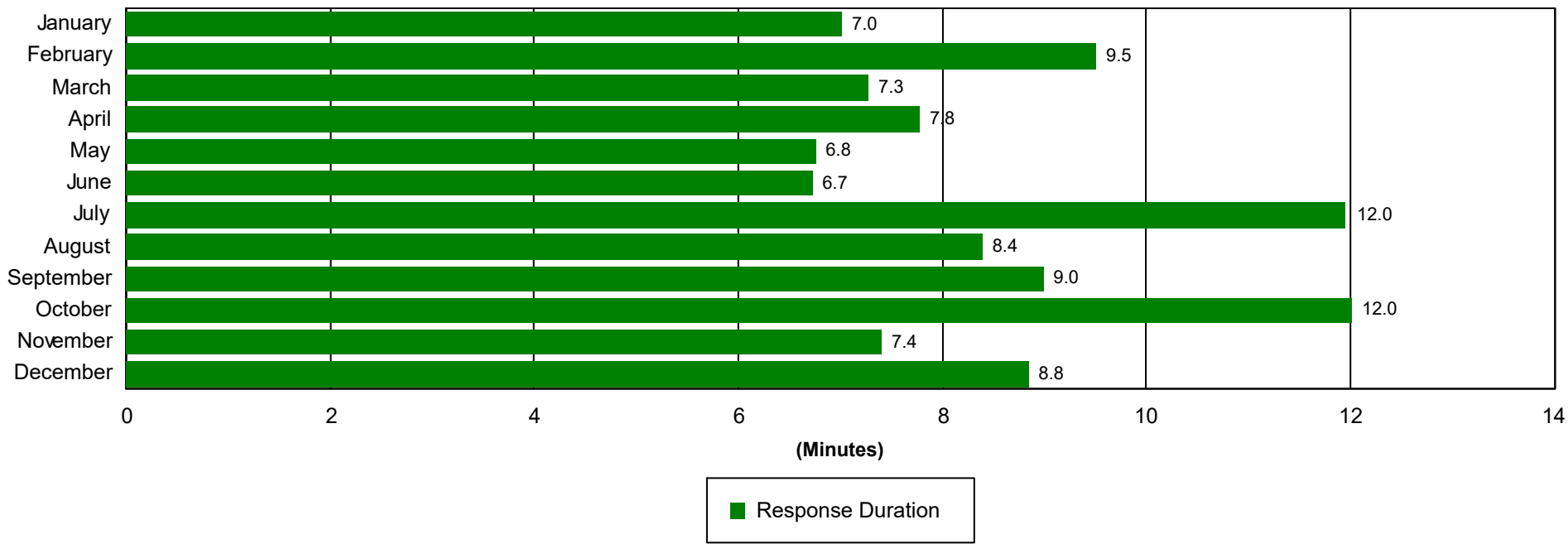
Departure Duration (min.): [Travel Lanes Cleared to Last Departure]

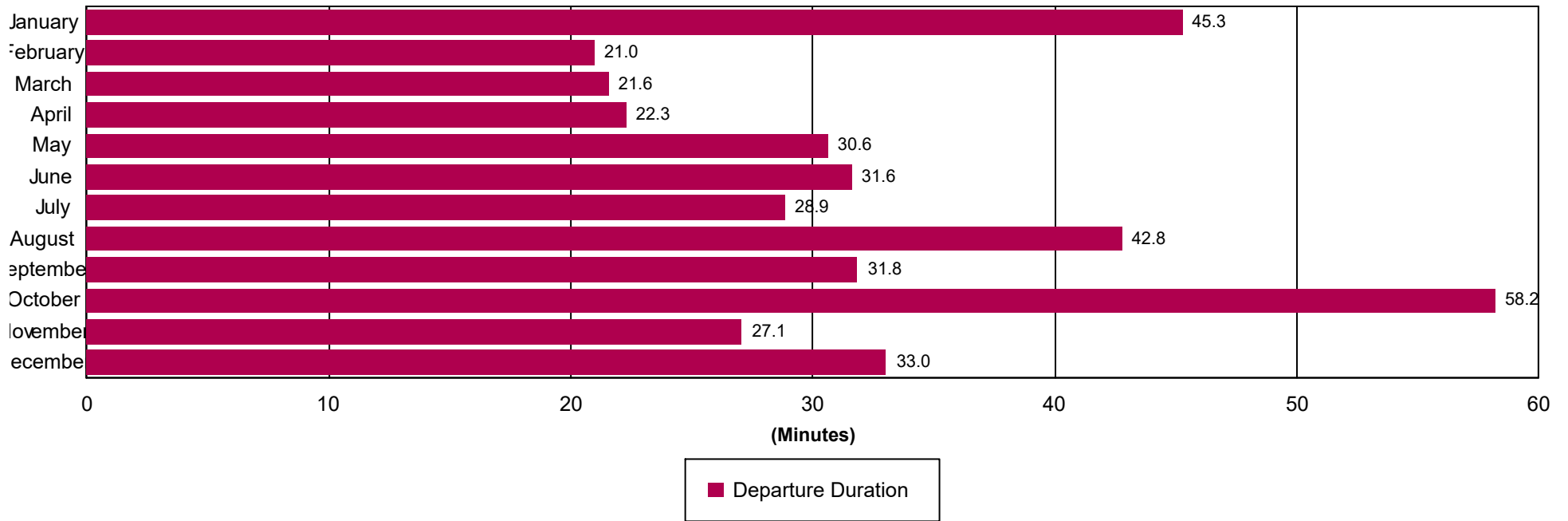
Roadway Clearance Duration (min.): [First Notif to Travel Lanes Cleared]

Incident Clearance Duration (min.): [First Notif to Last Departure]

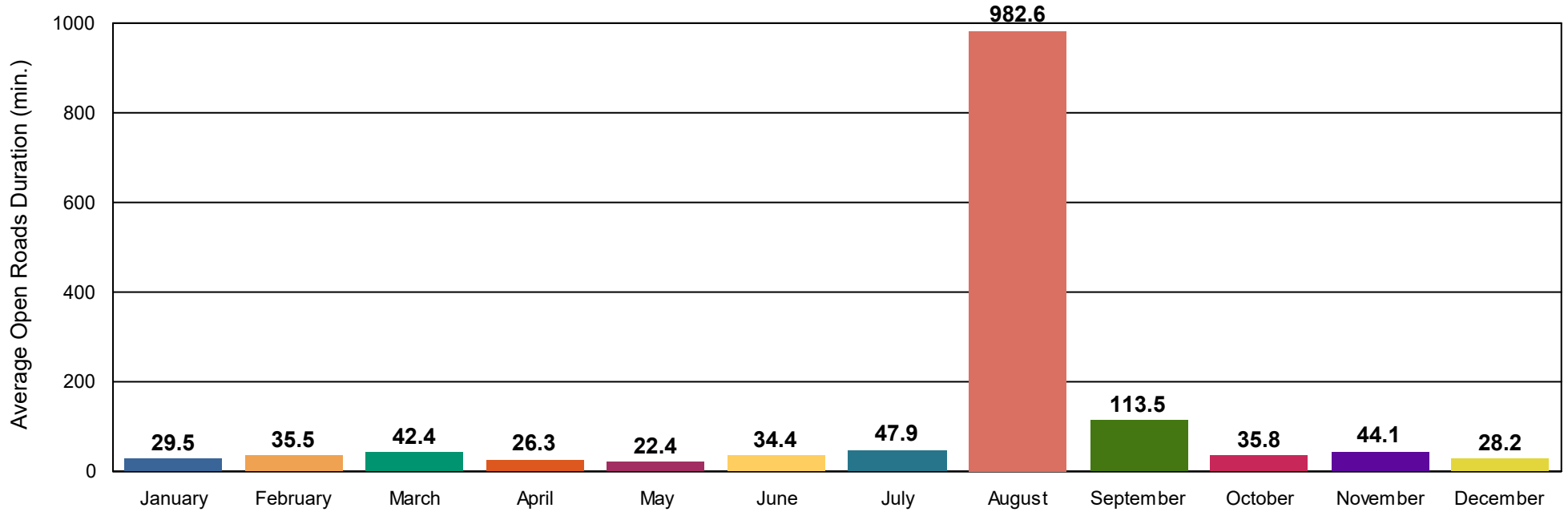
Incident Clearance Duration



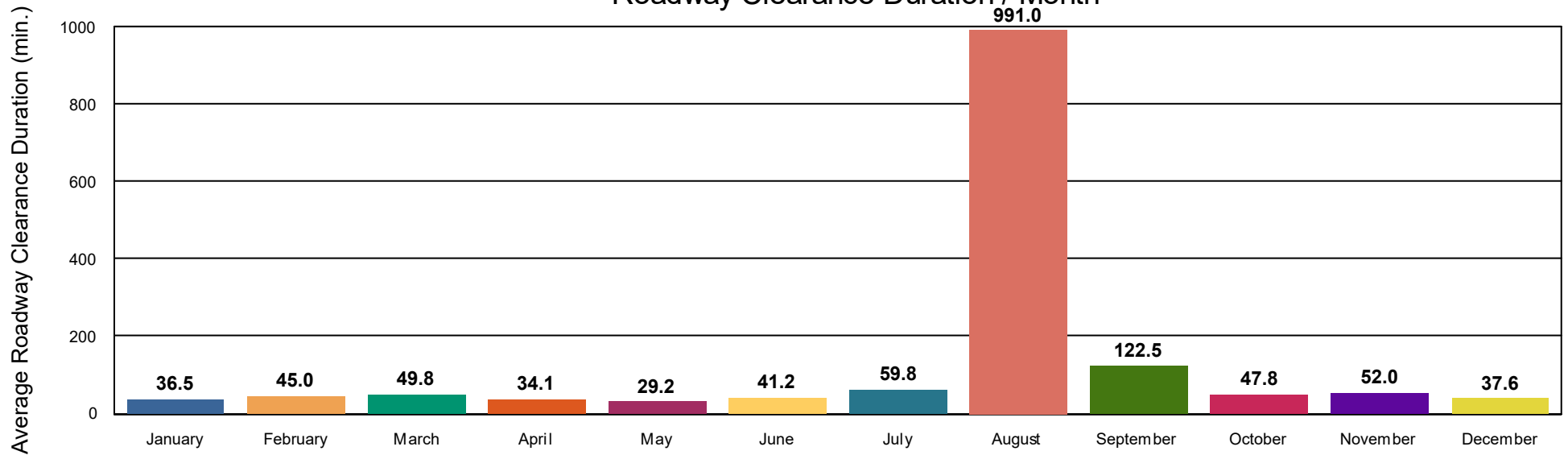




Open Roads Duration / Month



Roadway Clearance Duration / Month



Performance Measures Summary

Incidents with HELP Truck Response

	January	February	March	April	May	June	July	August	September	October	November	December	Total
Events included	147	153	230	205	218	235	238	254	213	181	234	208	2,516
Notification Duration (min.)*	0.0	0.0	0.0	0.0	0.0	0.0	0.0	0.0	0.0	0.0	0.0	0.0	0.0
Verification Duration (min.)	0.0	0.0	0.0	0.0	0.0	0.0	0.0	0.0	0.0	0.0	0.0	0.1	0.0
Response Duration (min.)	5.4	5.9	5.0	6.9	5.8	6.6	11.9	6.4	4.1	8.1	4.8	5.9	6.5
Open Roads Duration (min.)	16.0	24.3	21.0	15.7	17.3	20.4	46.1	1,273.3	123.8	23.1	34.7	16.6	160.5
Departure Duration (min.)	42.4	21.8	23.1	21.6	31.1	26.3	25.4	36.2	32.3	78.9	25.9	30.5	32.3
Roadway Clearance Duration (min.)	21.4	30.2	26.1	22.6	23.1	27.0	58.0	1,279.7	127.9	31.2	39.6	22.6	167.0
Incident Clearance Duration (min.)	63.8	51.9	49.2	44.2	54.2	53.3	83.5	1,315.9	160.2	110.2	65.5	53.1	199.3

Note:

Response Duration (min.): [\[First Notification to First Arrival\]](#)

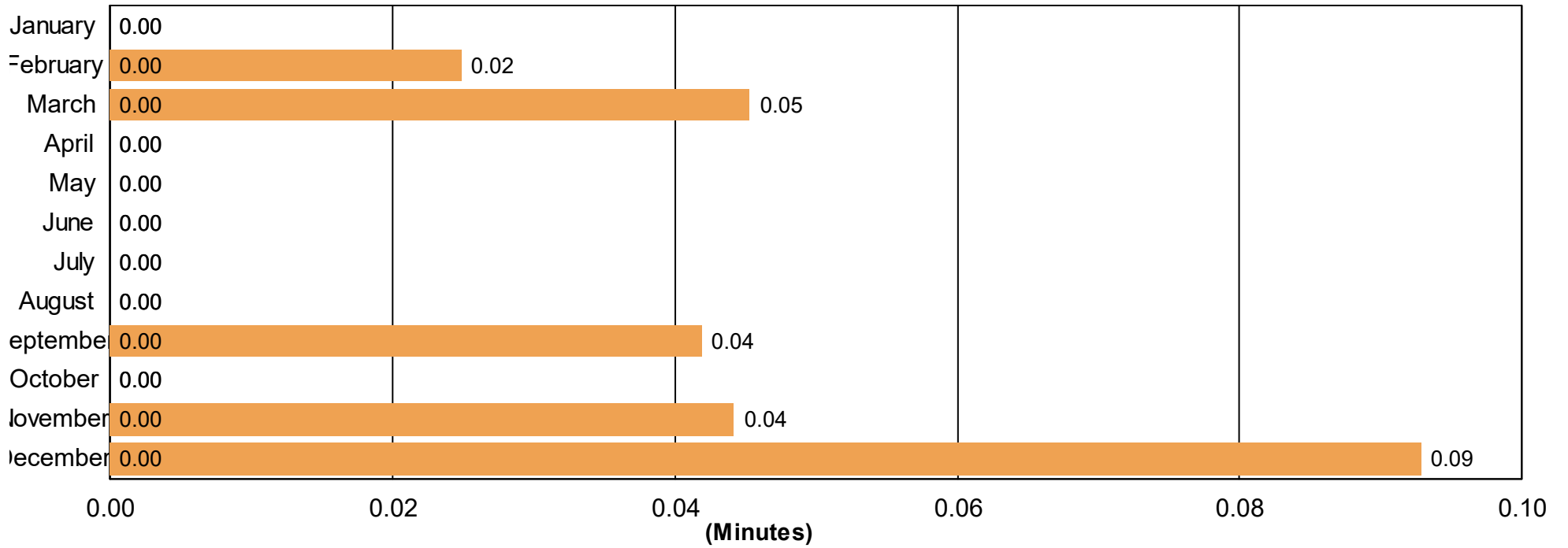
Open Roads Duration (min.): [\[First Arrival to Travel Lanes Cleared\]](#)

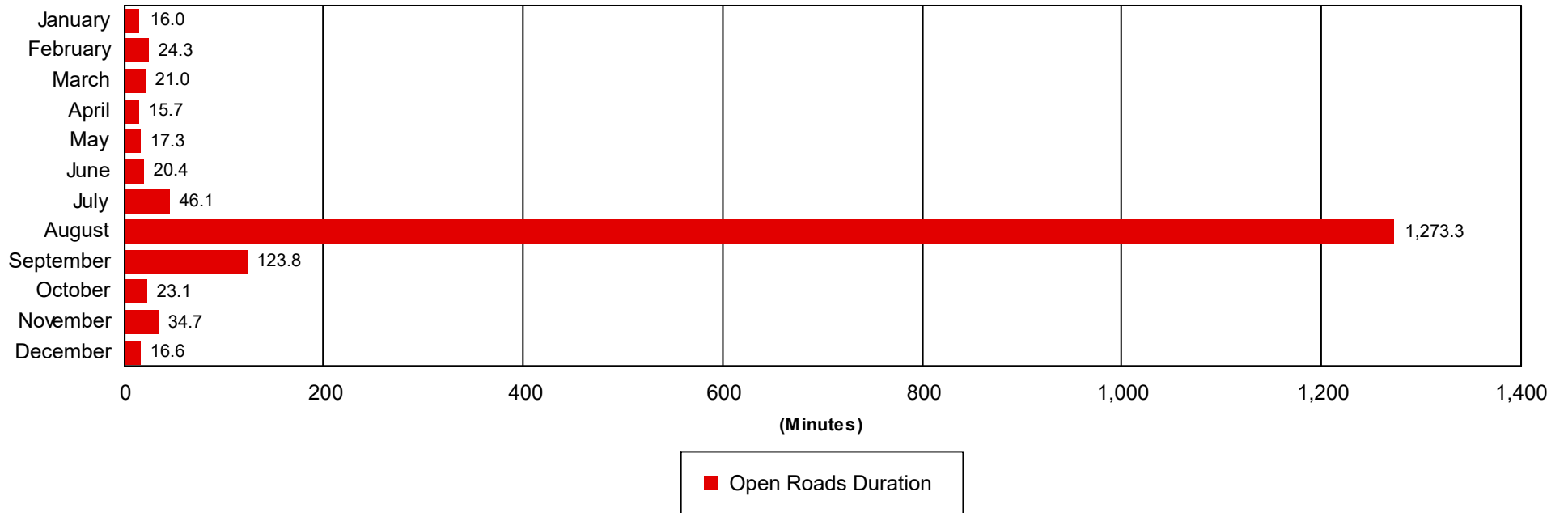
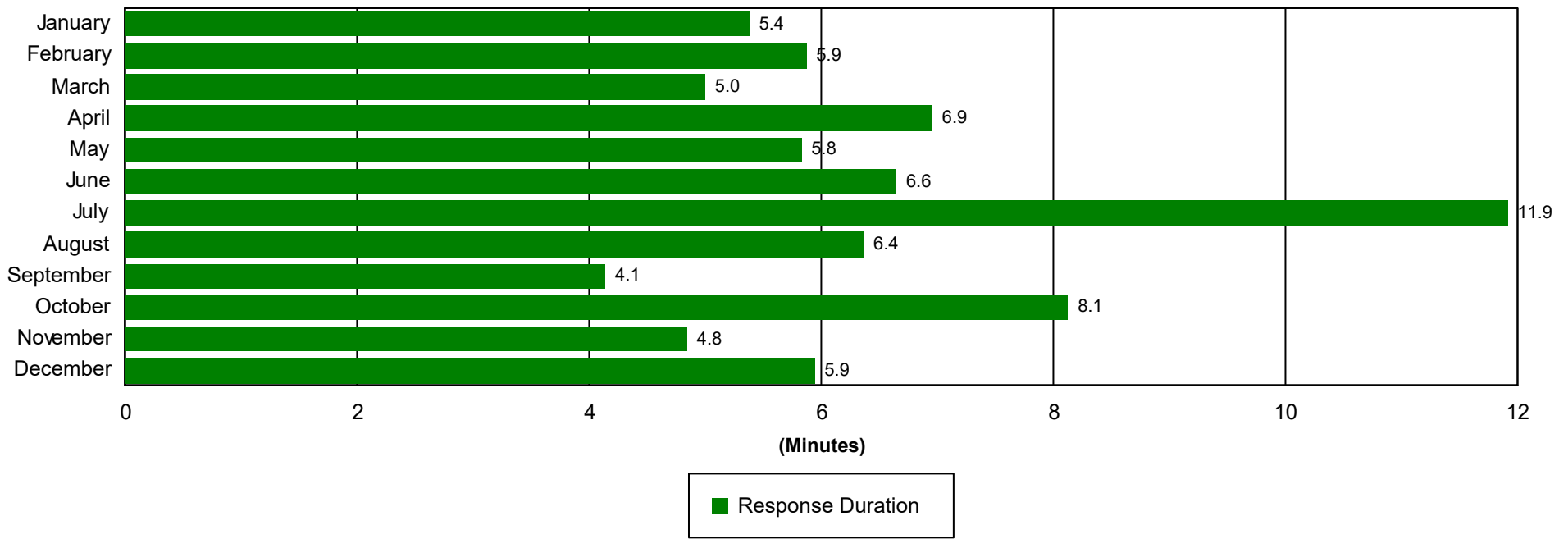
Departure Duration (min.): [\[Travel Lanes Cleared to Last Departure\]](#)

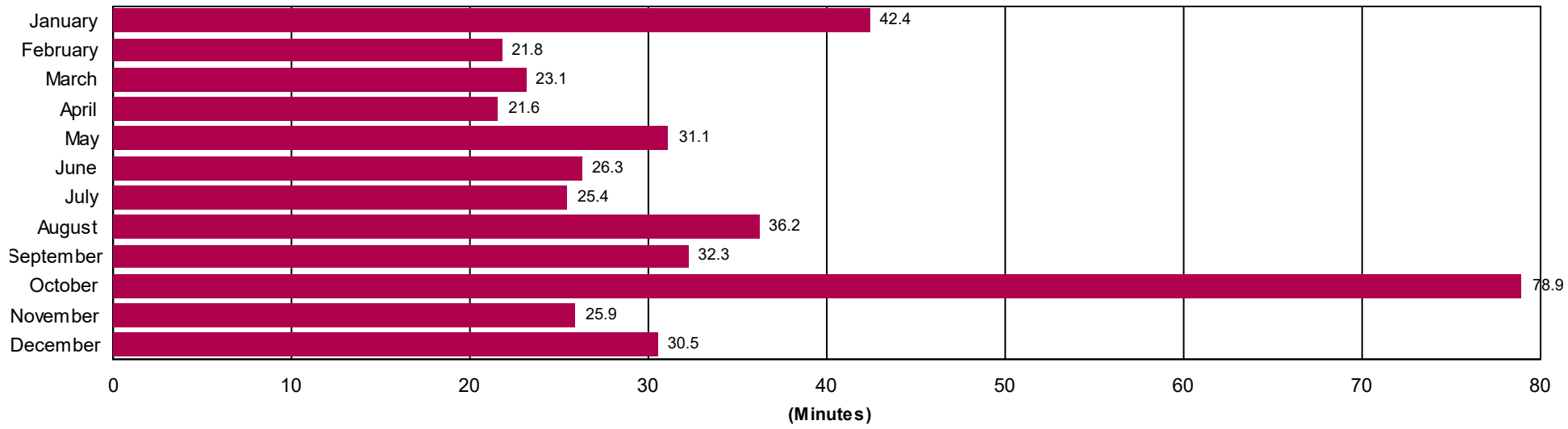
Roadway Clearance Duration (min.): [\[First Notif to Travel Lanes Cleared\]](#)

Incident Clearance Duration (min.): [\[First Notif to Last Departure\]](#)

Incident Clearance Duration

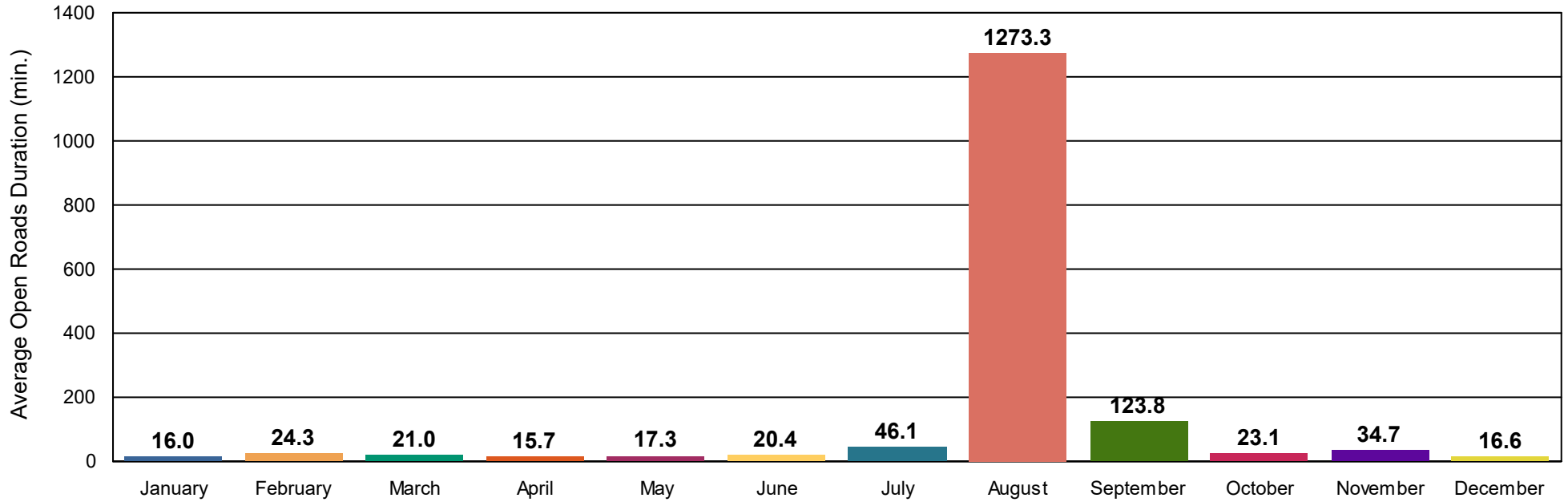




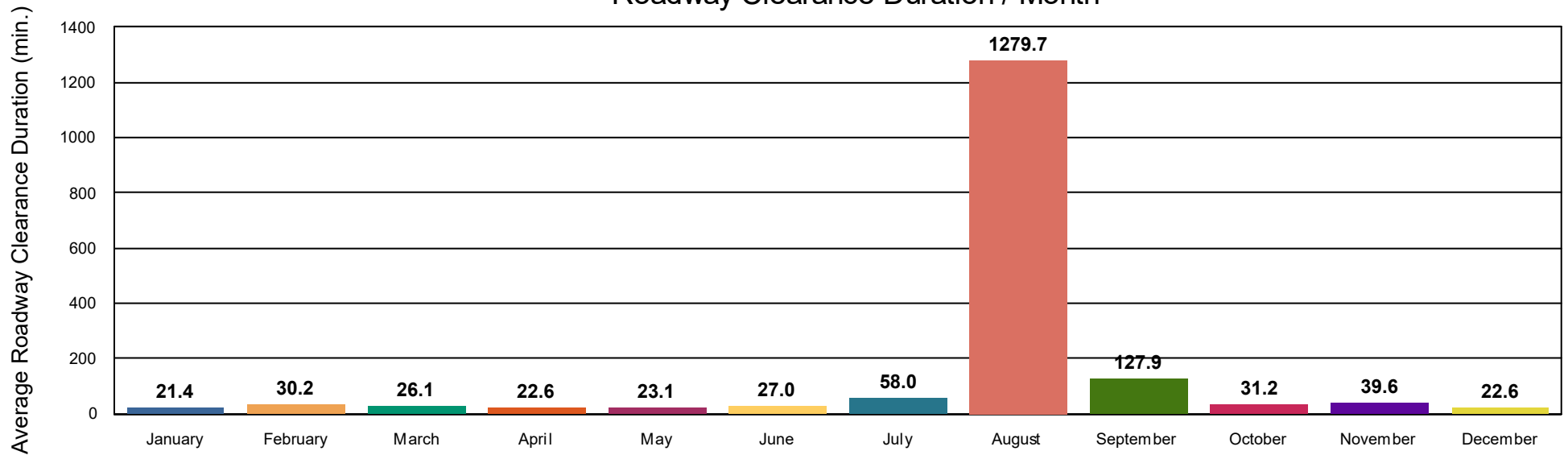


■ Departure Duration

Open Roads Duration / Month



Roadway Clearance Duration / Month



Reporting Period: January 1, 2021 to December 31, 2021

Performance Measures Summary

Incidents without HELP Truck Response

	January	February	March	April	May	June	July	August	September	October	November	December	Total
Events included	93	87	124	97	116	148	116	124	125	131	143	136	1,440
Notification Duration (min.)*	0.0	0.0	0.0	0.0	0.0	0.0	0.0	0.0	0.0	0.0	0.0	0.0	0.0
Verification Duration (min.)	0.1	0.0	0.6	0.0	0.0	0.3	0.0	0.0	0.2	0.0	1.5	1.5	0.4
Response Duration (min.)	11.0	19.5	14.5	11.2	10.1	7.0	12.1	14.7	23.3	19.4	13.0	15.3	14.4
Open Roads Duration (min.)	62.6	66.3	110.3	69.2	40.6	73.3	54.3	80.9	83.2	59.8	64.7	54.3	68.3
Departure Duration (min.)	52.4	18.9	16.6	25.4	29.0	46.2	41.6	63.3	30.6	19.0	29.6	38.6	34.5
Roadway Clearance Duration (min.)	73.8	85.8	125.4	80.4	50.7	80.6	66.5	95.6	106.6	79.2	79.2	71.1	83.1
Incident Clearance Duration (min.)	126.2	104.7	142.0	105.7	79.7	126.8	108.0	159.0	137.2	98.2	108.9	109.7	117.7

Note:

Response Duration (min.): [\[First Notification to First Arrival\]](#)

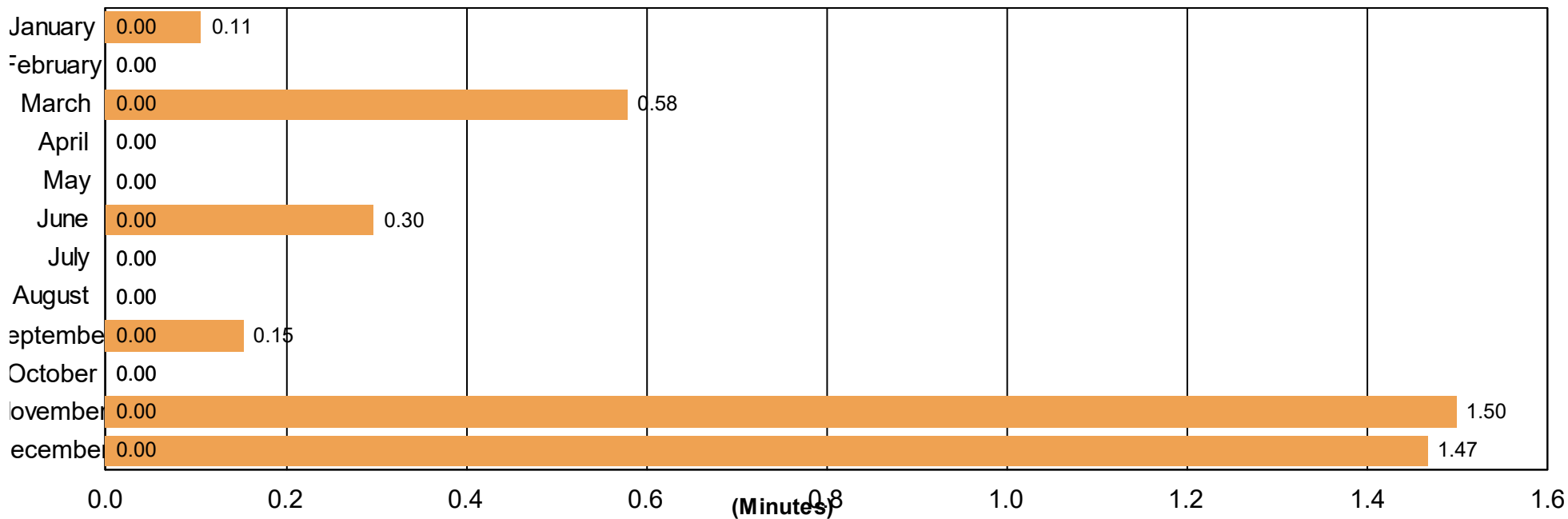
Open Roads Duration (min.): [\[First Arrival to Travel Lanes Cleared\]](#)

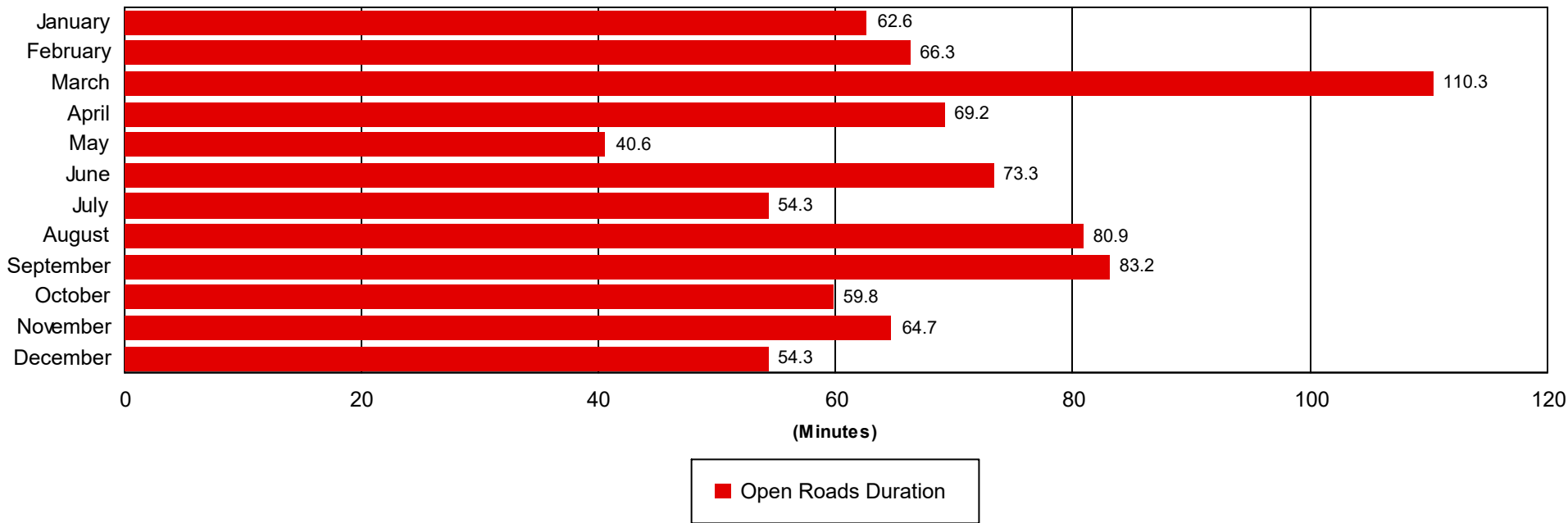
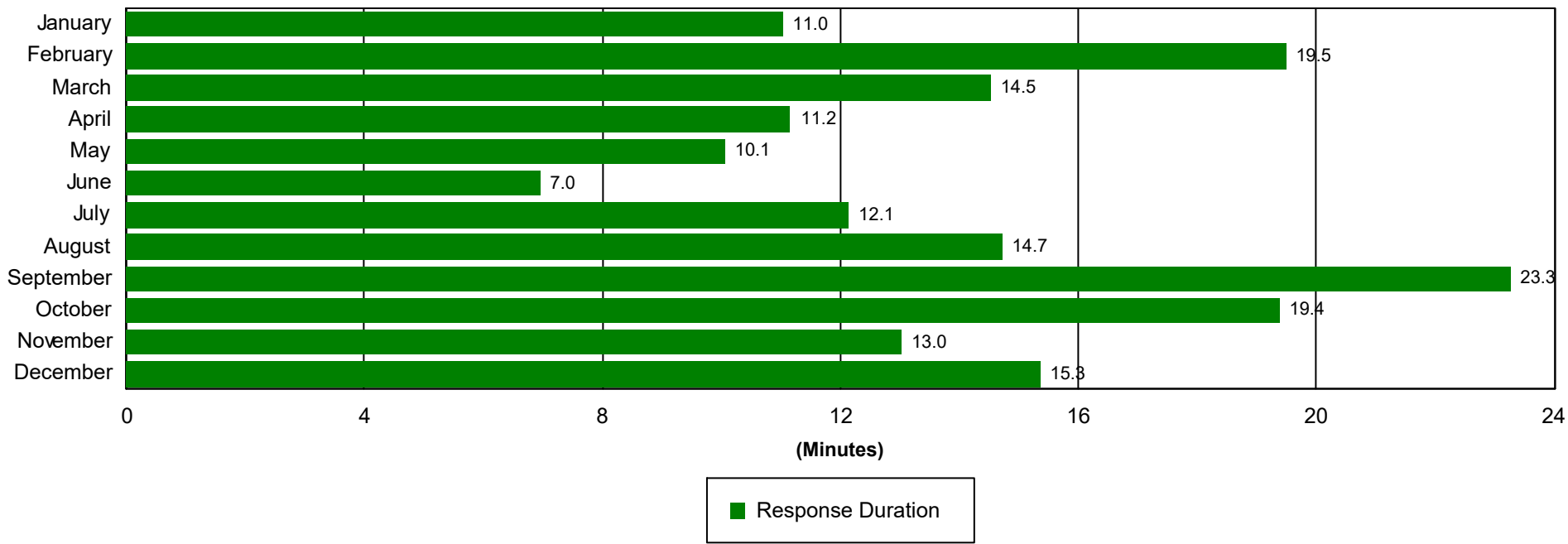
Departure Duration (min.): [\[Travel Lanes Cleared to Last Departure\]](#)

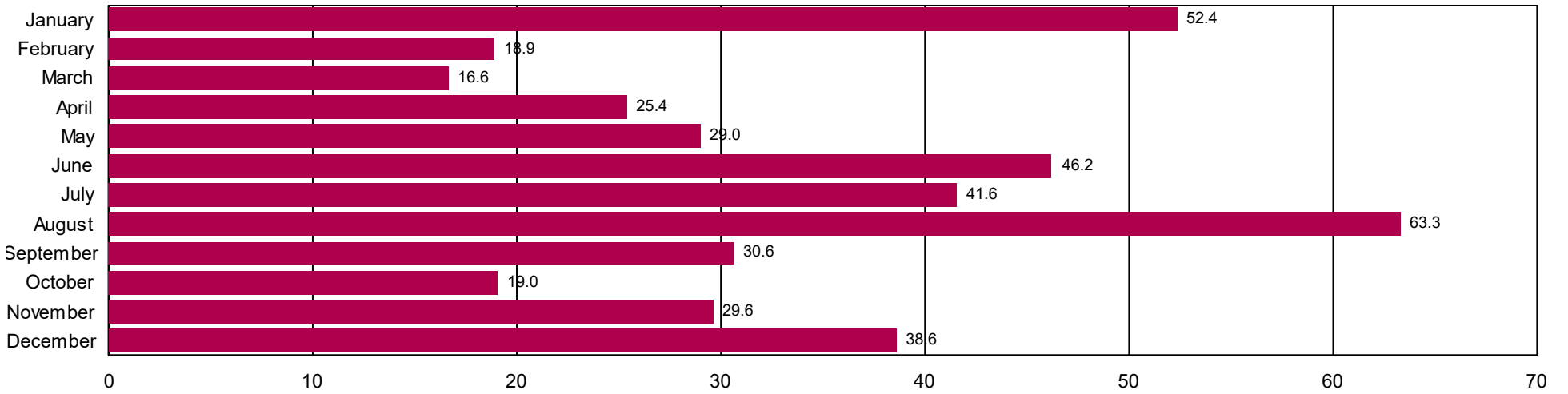
Roadway Clearance Duration (min.): [\[First Notif to Travel Lanes Cleared\]](#)

Incident Clearance Duration (min.): [\[First Notif to Last Departure\]](#)

Incident Clearance Duration

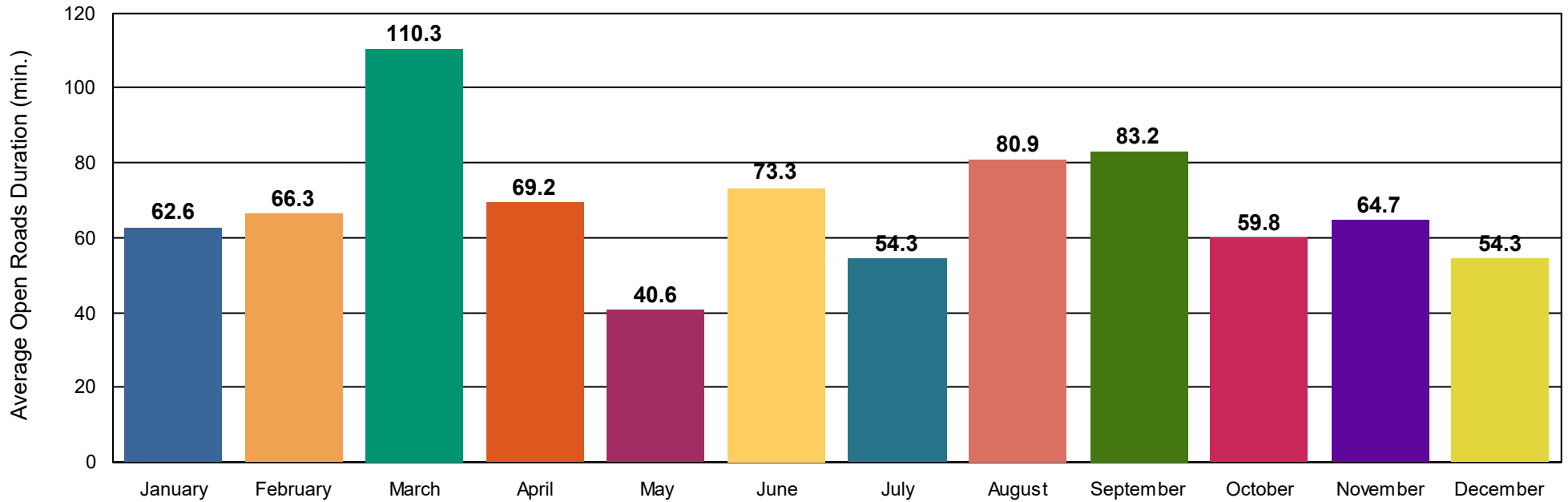




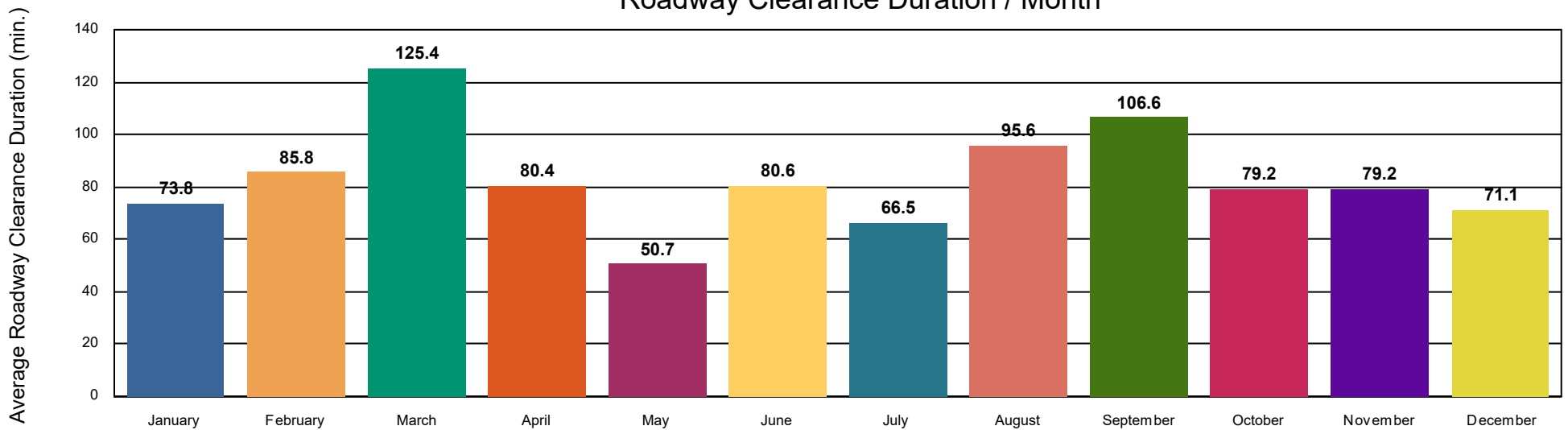


■ Departure Duration

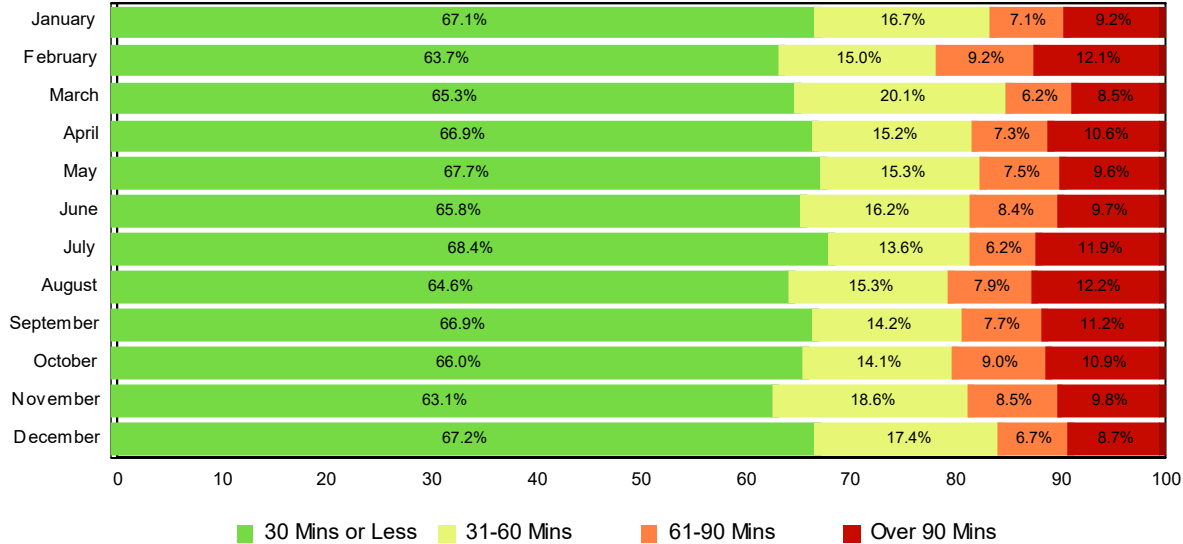
Open Roads Duration / Month



Roadway Clearance Duration / Month

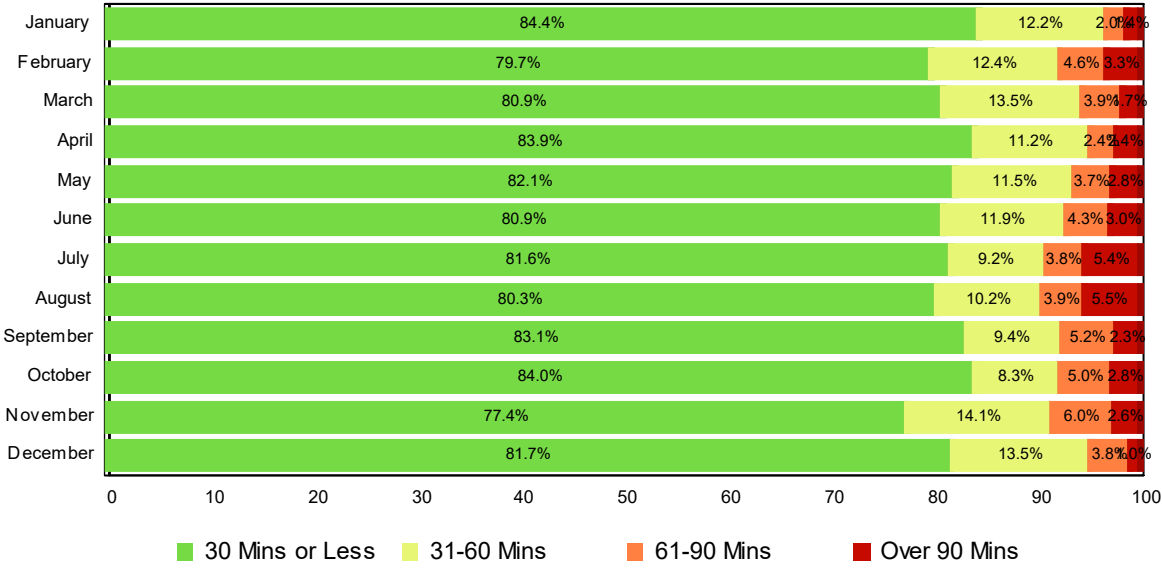


Lane Blockage Clearance Times - Overall



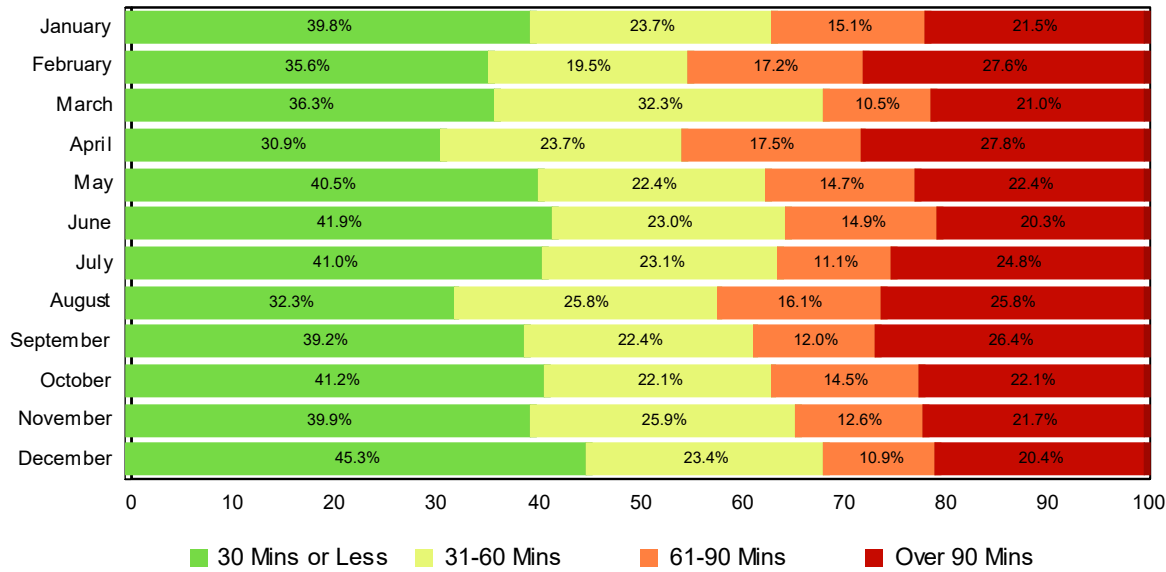
Month	30 Mins or Less	31-60 Mins	61-90 Mins	Over 90 Mins	Total # of Events
January	161	40	17	22	240
February	153	36	22	29	240
March	231	71	22	30	354
April	202	46	22	32	302
May	226	51	25	32	334
June	252	62	32	37	383
July	242	48	22	42	354
August	244	58	30	46	378
September	226	48	26	38	338
October	206	44	28	34	312
November	238	70	32	37	377
December	231	60	23	30	344
Total # of Events	2,612	634	301	409	3,956

Lane Blockage Clearance Times - with HELP Truck Response



Month	30 Mins or Less	31-60 Mins	61-90 Mins	Over 90 Mins	Total # of Events
January	124	18	3	2	147
February	122	19	7	5	153
March	186	31	9	4	230
April	172	23	5	5	205
May	179	25	8	6	218
June	190	28	10	7	235
July	195	21	9	13	238
August	204	26	10	14	254
September	177	20	11	5	213
October	152	15	9	5	181
November	181	33	14	6	234
December	170	28	8	2	208
Total # of Events	2,052	287	103	74	2,516

Lane Blockage Clearance Times - without HELP Truck Response



Month	30 Mins or Less	31-60 Mins	61-90 Mins	Over 90 Mins	Total # of Events
January	37	22	14	20	93
February	31	17	15	24	87
March	45	40	13	26	124
April	30	23	17	27	97
May	47	26	17	26	116
June	62	34	22	30	148
July	47	27	13	29	116
August	40	32	20	32	124
September	49	28	15	33	125
October	54	29	19	29	131
November	57	37	18	31	143
December	61	32	15	28	136
Total # of Events	560	347	198	335	1,440

All Incidents with Travel Lane Blockage and HELP Truck Response

No. of Lanes Blocked	%	Count	%	Count	%	Count	%	Count	Avg Clear Time (Min)
1	87	1595	96	1770	99	1818	1	25	16
2	72	393	87	476	94	514	6	31	30
3	53	50	78	74	92	87	8	8	44
4	39	11	50	14	64	18	36	10	77
5	60	3	100	5	100	5	0	0	25
Totals	82	2,052	93	2,339	97	2,442	3	74	21

<=30 Mins

<=60 Mins

<=90 Mins

>90 Mins

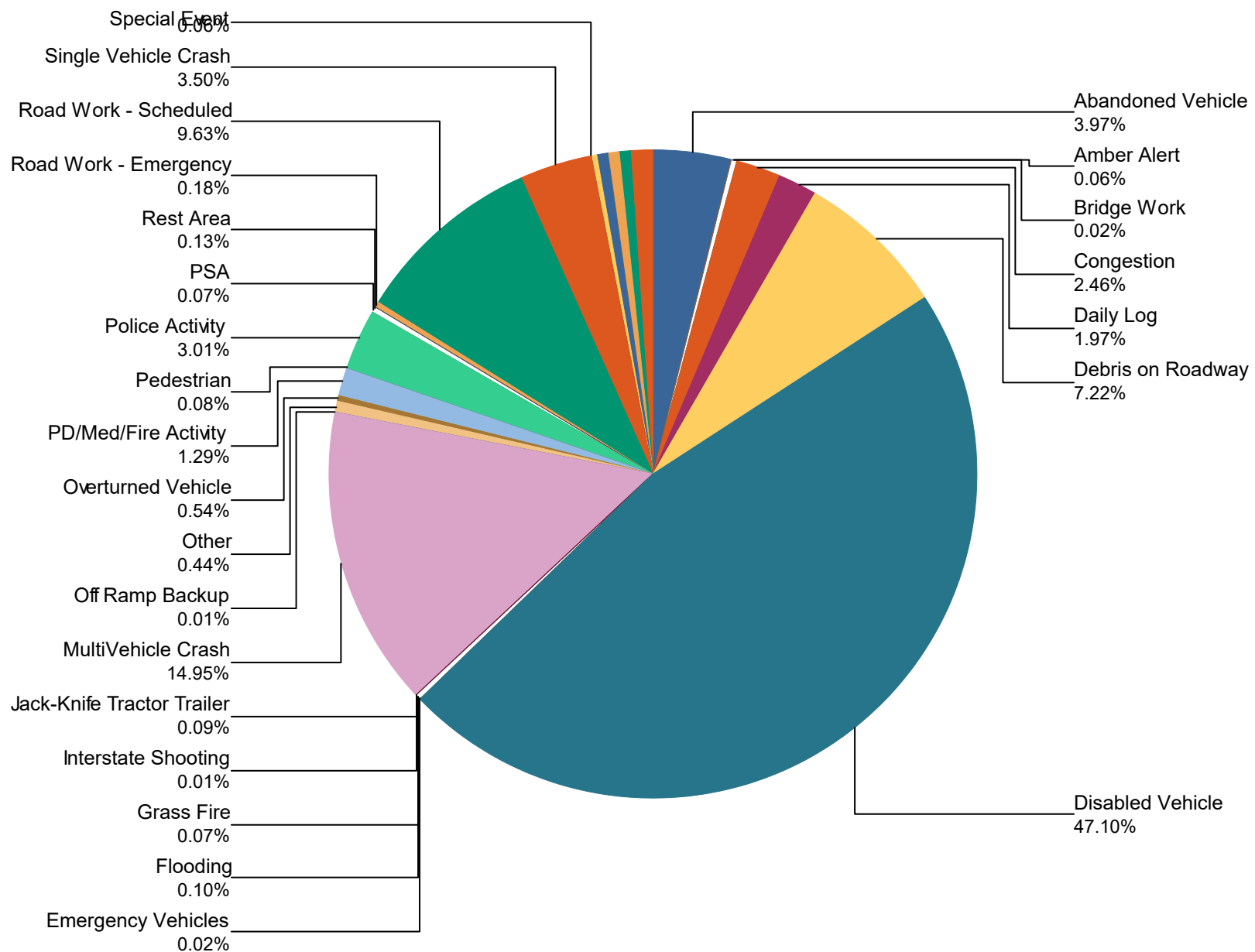
Travel Lane Blockage Events- Roadway

Roadway	Lane Blockage Events Count	All Incidents	% of Incidents with Lane Blockage
I0024	1363	5,234	26.0
I0040	151	273	55.3
I0075	1288	6,604	19.5
I0124	2	16	12.5
Region 2 TMC	3	366	0.8
SR001	16	34	47.1
SR002	28	51	54.9
SR008	27	32	84.4
SR015	5	5	100.0
SR016	0	1	0.0
SR017	0	1	0.0
SR024	8	21	38.1
SR026	5	13	38.5
SR027	3	10	30.0
SR028	19	36	52.8
SR029	240	1,181	20.3
SR030	11	30	36.7
SR033	5	9	55.6
SR039	8	10	80.0
SR040	9	13	69.2
SR050	4	5	80.0
SR052	4	8	50.0
SR053	9	12	75.0
SR055	5	14	35.7
SR056	13	22	59.1
SR058	8	25	32.0
SR060	6	18	33.3
SR062	1	1	100.0
SR064	1	2	50.0

SR068	11	19	57.9
SR074	4	9	44.4
SR083	1	1	100.0
SR084	13	17	76.5
SR085	1	1	100.0
SR096	3	10	30.0
SR101	2	18	11.1
SR108	1	3	33.3
SR111	20	37	54.1
SR122	1	1	100.0
SR127	4	8	50.0
SR134	2	2	100.0
SR135	6	14	42.9
SR136	3	6	50.0
SR141	1	1	100.0
SR145	2	2	100.0
SR153	582	2,119	27.5
SR154	0	1	0.0
SR156	3	4	75.0
SR163	7	13	53.8
SR164	0	2	0.0
SR279	1	1	100.0
SR282	0	2	0.0
SR283	0	1	0.0
SR285	2	3	66.7
SR288	1	1	100.0
SR290	3	5	60.0
SR292	1	1	100.0
SR298	2	4	50.0
SR299	0	2	0.0
SR302	1	1	100.0
SR304	4	5	80.0
SR305	1	4	25.0

SR306	2	2	100.0
SR307	0	2	0.0
SR308	2	5	40.0
SR310	2	4	50.0
SR311	3	6	50.0
SR312	0	6	0.0
SR313	1	3	33.3
SR314	0	1	0.0
SR317	10	20	50.0
SR319	7	12	58.3
SR320	2	5	40.0
SR325	0	2	0.0
SR392	1	3	33.3
SR399	1	1	100.0
SR476	1	1	100.0
SR477	1	1	100.0
All Roadways	3,958	16,439	24.1

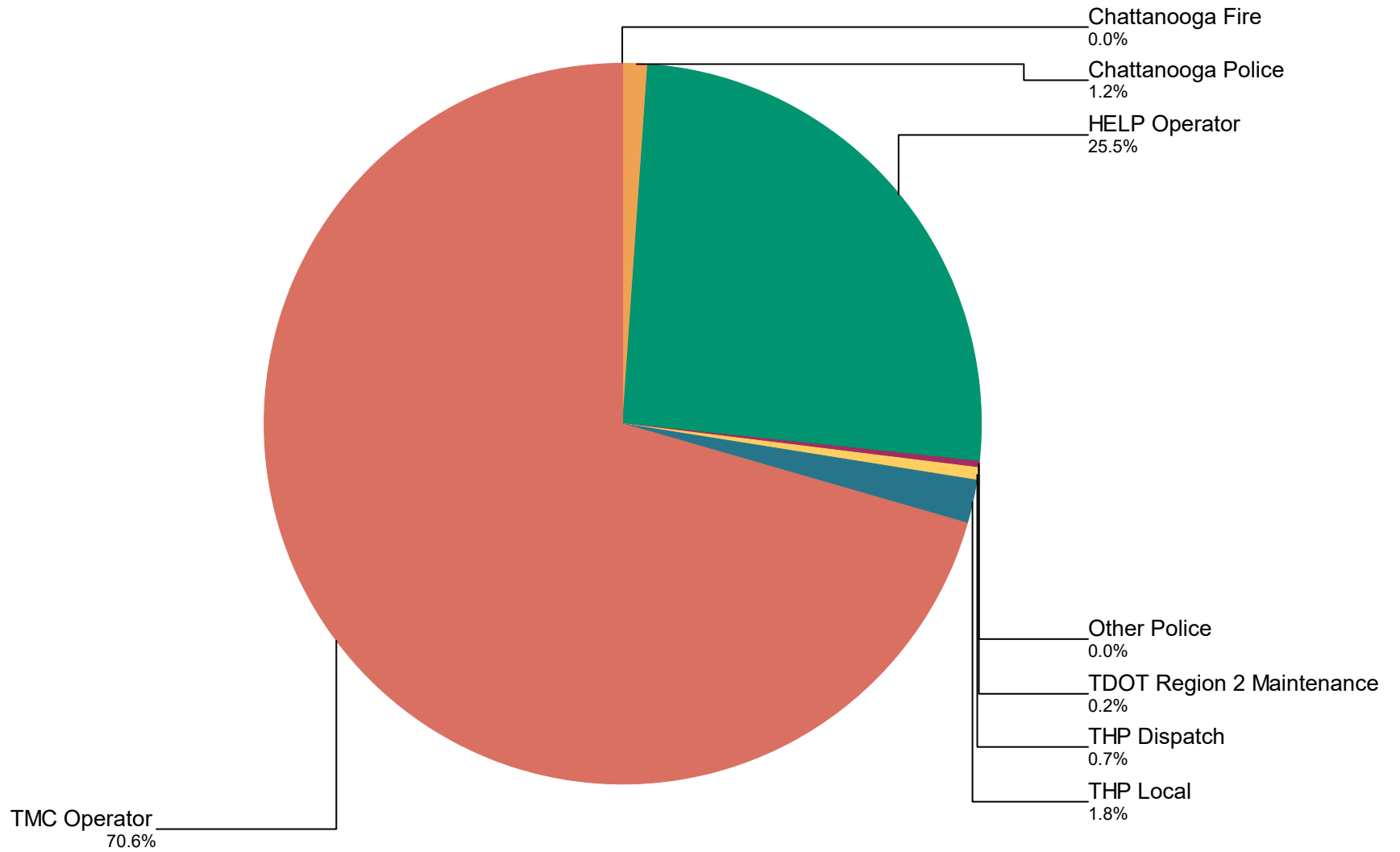
Percentage of Event Types for All Events in Current Year



Event Types for All Events	January	February	March	April	May	June	July	August	September
Abandoned Vehicle	48	49	49	65	65	79	75	53	53
Amber Alert	0	0	0	0	1	2	0	1	0
Bridge Work	0	3	0	0	0	0	0	0	0
Congestion	19	12	45	31	37	55	46	15	27
Daily Log	33	28	29	30	31	31	32	30	31
Debris on Roadway	73	84	109	117	113	142	123	150	128
Disabled Vehicle	637	551	722	693	712	818	808	764	772
Emergency Vehicles	0	0	0	0	1	0	0	2	0
Flooding	0	0	14	0	0	0	0	0	1
Grass Fire	2	1	2	1	2	2	0	0	1
Interstate Shooting	0	0	0	0	0	0	0	0	0
Jack-Knife Tractor Trailer	0	1	2	0	1	2	3	1	2
MultiVehicle Crash	143	147	196	199	227	256	223	200	215
Off Ramp Backup	0	1	0	0	0	0	0	0	1
Other	2	4	4	4	2	4	4	3	4
Overtuned Vehicle	10	6	6	8	1	8	5	15	9
PD/Med/Fire Activity	41	17	31	21	26	23	10	4	7
Pedestrian	0	0	0	0	1	1	2	2	0
Police Activity	24	29	19	28	30	34	62	70	58
PSA	0	0	0	2	1	2	4	2	0

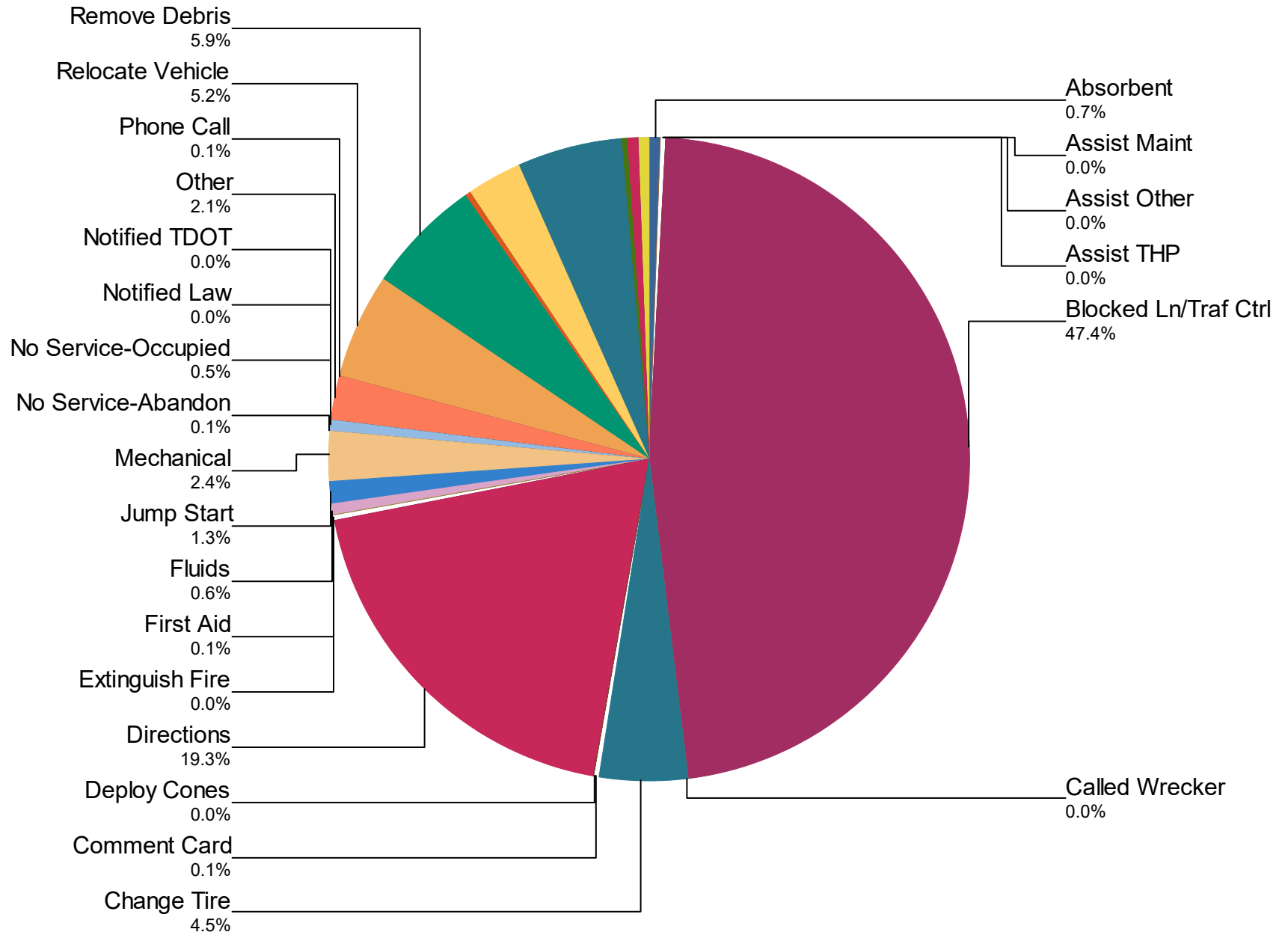
	January	February	March	April	May	June	July	August	September
Rest Area	4	0	3	4	1	3	0	0	1
Road Work - Emergency	3	4	1	2	1	0	2	4	4
Road Work - Scheduled	81	92	168	157	143	217	206	249	199
Single Vehicle Crash	39	59	79	50	37	52	48	60	58
Special Event	2	0	2	0	2	2	0	1	2
Test Incident	7	5	7	5	5	3	5	2	6
Traffic Signal Dark	0	0	0	0	0	0	0	0	1
Unknown	3	6	9	5	16	5	6	4	7
Vehicle Fire	7	7	11	7	13	19	16	14	4
Visibility	24	12	11	6	2	6	3	8	5
Weather	12	40	16	3	5	19	13	14	10
Wrong Way Driver	0	0	0	0	0	0	1	2	1
Total	1,214	1,158	1,535	1,438	1,476	1,785	1,697	1,670	1,607

Incidents by Detection Source



Notifier Agency	January	February	March	April	May	June	July	August	September	October
Chattanooga Fire	0	0	0	0	0	0	0	0	0	0
Chattanooga Police	6	9	8	18	14	33	22	32	8	28
HELP Operator	308	313	391	414	446	445	475	503	423	362
Other Police	1	1	0	0	0	0	0	0	0	0
TDOT Region 2 Maintenance	2	4	7	1	0	3	2	2	4	4
THP Dispatch	10	10	13	2	13	9	10	14	13	9
THP Local	2	5	4	4	2	6	5	3	2	2
TMC Operator	885	816	1,112	999	1,001	1,289	1,183	1,116	1,157	1,257
Total	1,214	1,158	1,535	1,438	1,476	1,785	1,697	1,670	1,607	1,662

Percentage of Activity Types for HELP Truck Activities in Current Year



Activity Types for All Activities	January	February	March	April	May	June	July	August	September
Absorbent	4	17	18	13	12	12	20	8	25
Assist Maint	0	1	0	0	0	0	0	0	0
Assist Other	0	0	0	0	1	0	0	0	0
Assist THP	0	0	0	0	0	0	0	0	0
Blocked Ln/Traf Ctrl	868	809	964	1,052	1,061	1,211	1,200	1,158	1,091
Called Wrecker	1	0	1	1	1	3	0	0	1
Change Tire	94	59	74	109	114	110	109	105	129
Comment Card	0	1	0	1	2	2	1	2	4
Deploy Cones	0	0	0	0	1	0	0	0	0
Directions	390	360	367	334	418	436	566	482	418
Extinguish Fire	0	0	0	1	2	1	0	0	0
First Aid	1	1	0	3	3	1	1	2	3

	January	February	March	April	May	June	July	August	September
Fluids	11	8	20	6	14	16	30	22	6
Jump Start	15	19	23	20	33	25	41	36	32
Mechanical	53	31	82	60	62	64	53	54	53
No Service-Abandon	3	2	2	0	1	6	2	1	2
No Service-Occupied	11	7	17	4	16	7	7	5	11
Notified Law	1	0	0	0	2	1	2	0	1
Notified TDOT	2	2	0	0	3	3	1	1	0
Other	46	34	52	41	58	34	44	23	61
Phone Call	2	2	4	3	1	7	4	1	1
Relocate Vehicle	84	73	93	105	121	116	134	122	122
Remove Debris	75	111	121	137	121	146	145	164	153
Secure Load	6	7	3	3	3	7	2	3	6
Slow Roll	0	0	0	3	4	0	0	0	2

	January	February	March	April	May	June	July	August	September
Supply Fuel	56	48	56	72	49	54	68	75	69
Tag Abandoned	112	108	100	116	116	127	118	105	118
Transported	1	0	2	0	2	4	8	1	8
Unable to Locate	5	7	4	3	2	7	10	6	5
Welfare Check	5	2	7	23	13	42	5	15	26
Wrecker Towed	0	0	1	0	0	3	0	0	0
Wrong Truck	0	0	0	0	9	18	15	20	19
Total	1,846	1,709	2,011	2,110	2,245	2,463	2,586	2,411	2,366

DMS Duration

	January	February	March	April	May	June	July	August	September	October	November	December
Avg % ON Time	41.6	51.6	56.8	67.9	43.3	63.5	81.3	48.0	37.4	55.7	86.6	57.9
Avg Post Time (hr)	2.1	2.1	1.5	1.8	1.0	1.9	1.9	1.4	0.8	1.3	2.1	2.0
Avg Messages Per Sign	147.1	165.4	278.2	276.3	309.8	241.3	314.7	259.5	321.4	321.1	303.0	215.6
Total Messages Posted	7,061	7,939	13,355	13,260	14,872	11,581	15,104	12,456	15,427	15,412	14,543	10,351