

Includes All Responders

Reporting Period: October 1, 2021 to December 31, 2021

Region 1

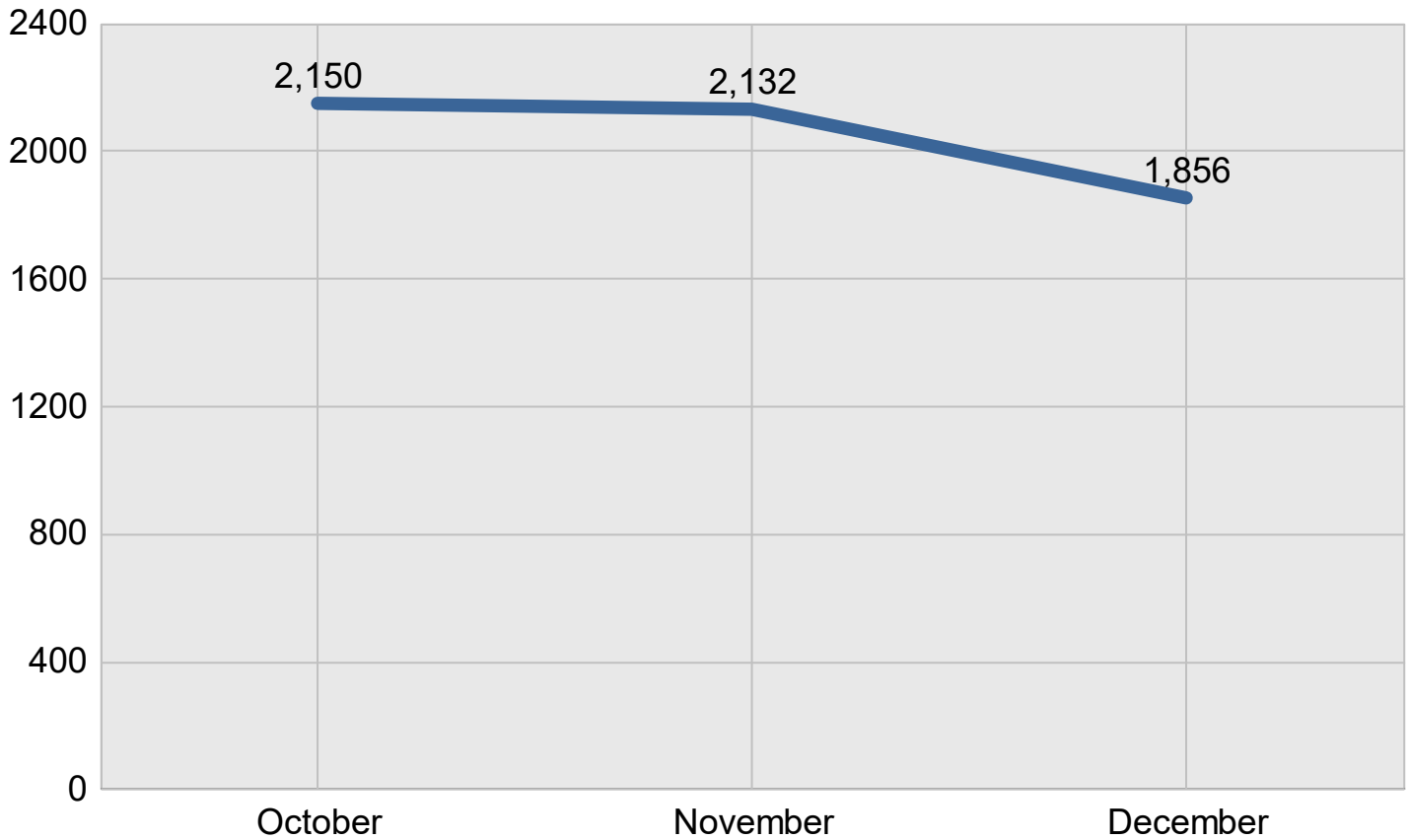
Created on: March 28, 2022 2:09 pm County: All Counties

Report Template version 2.0

Total Incidents Managed This Quarter: 6,138

Incidents Managed

Incidents Managed - Monthly

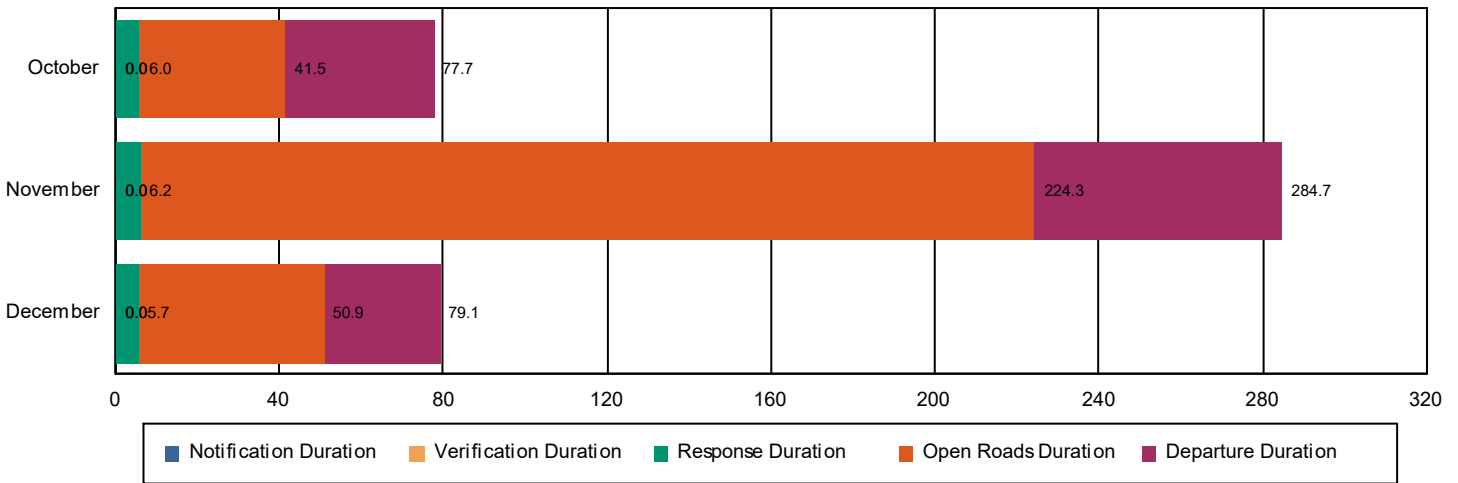


# Performance Measures Summary

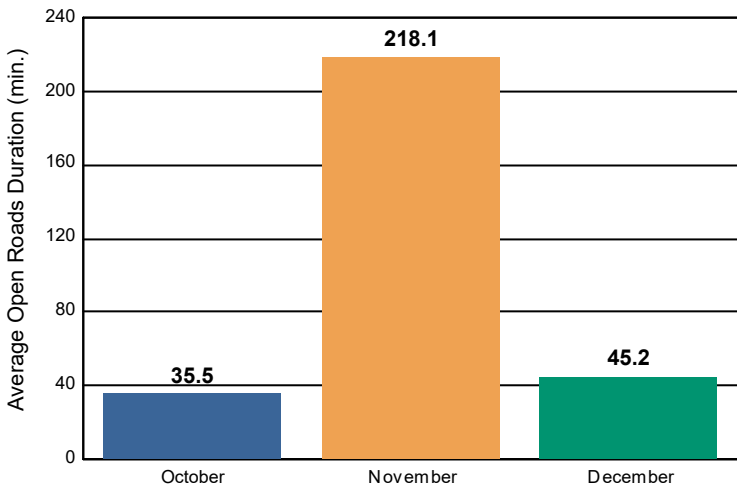
## Incidents Overall Response

	October	November	December	Total
Events included in Performance Measures	242	224	206	672
Notification Duration (min.)*	0.0	0.0	0.0	0.0
Verification Duration (min.)	0.0	0.0	0.0	0.0
Response Duration (min.) [First Notification to First Arrival]	6.0	6.2	5.7	6.0
Open Roads Duration (min.) [First Arrival to Travel Lanes Cleared]	35.5	218.1	45.2	95.9
Departure Duration (min.) [Travel Lanes Cleared to Last Departure]	36.2	60.5	28.2	41.3
<b>Roadway Clearance Duration (min.) [First Notif to Travel Lanes Cleared]</b>	<b>41.5</b>	<b>224.3</b>	<b>50.9</b>	<b>101.9</b>
	<b>77.7</b>	<b>284.7</b>	<b>79.1</b>	<b>143.2</b>

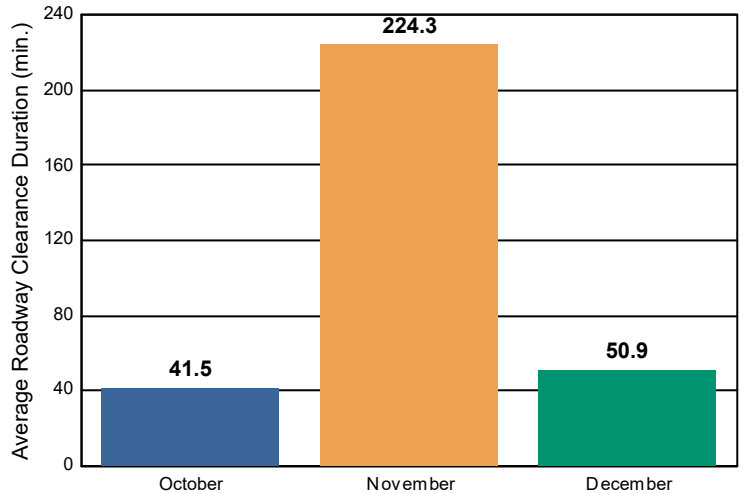
### Incident Clearance Duration



### Open Roads Duration / Month



### Roadway Clearance Duration / Month

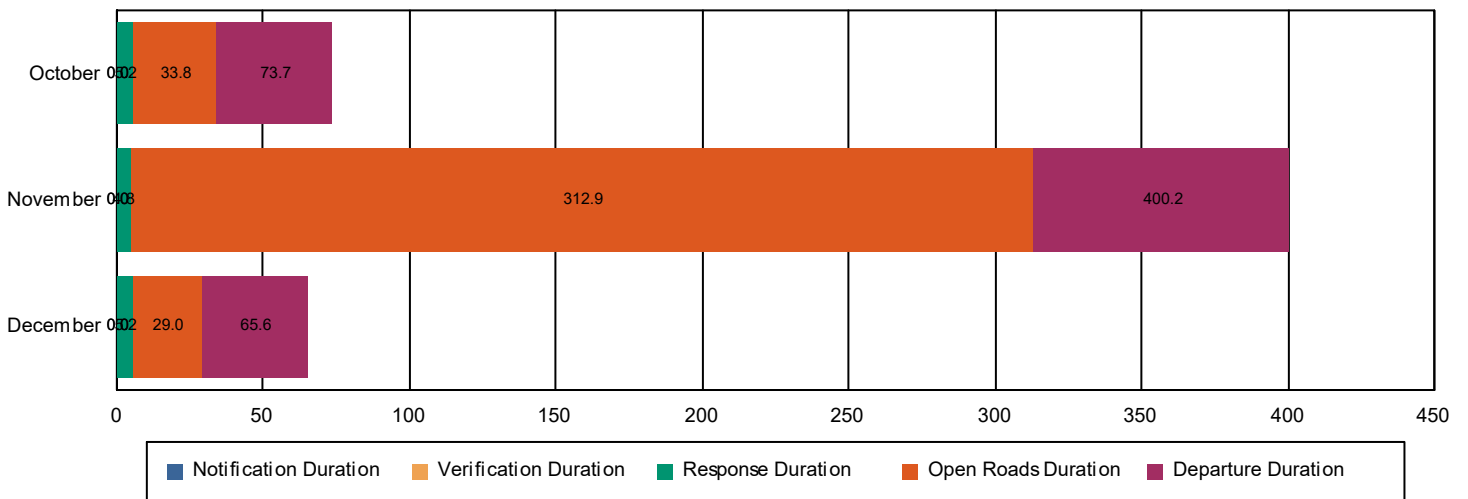


# Performance Measures Summary

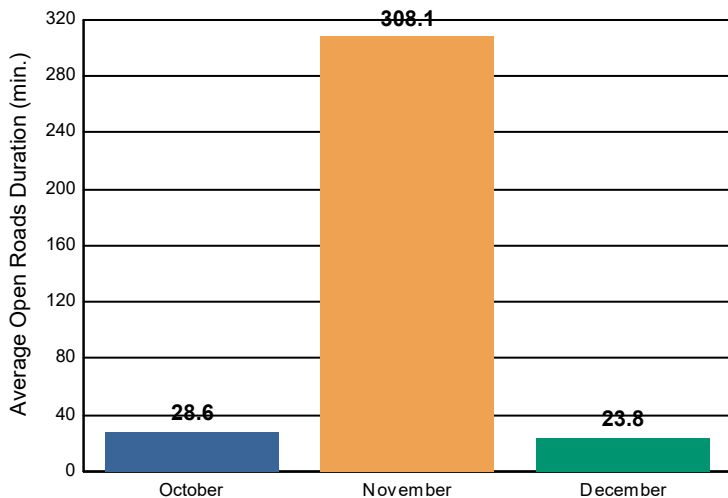
## Incidents with HELP Truck Response

	October	November	December	Total
Events included in Performance Measures	144	111	121	376
Notification Duration (min.)	0.0	0.0	0.0	0.0
Verification Duration (min.)	0.0	0.0	0.0	0.0
Response Duration (min.) [First Notification to First Arrival]	5.2	4.8	5.2	5.1
Open Roads Duration (min.) [First Arrival to Travel Lanes Cleared]	28.6	308.1	23.8	111.2
Departure Duration (min.) [Travel Lanes Cleared to Last Departure]	40.0	87.3	36.6	53.1
<b>Roadway Clearance Duration (min.) [First Notif to Travel Lanes Cleared]</b>	<b>33.8</b>	<b>312.9</b>	<b>29.0</b>	<b>116.2</b>
	<b>73.7</b>	<b>400.2</b>	<b>65.6</b>	<b>169.4</b>

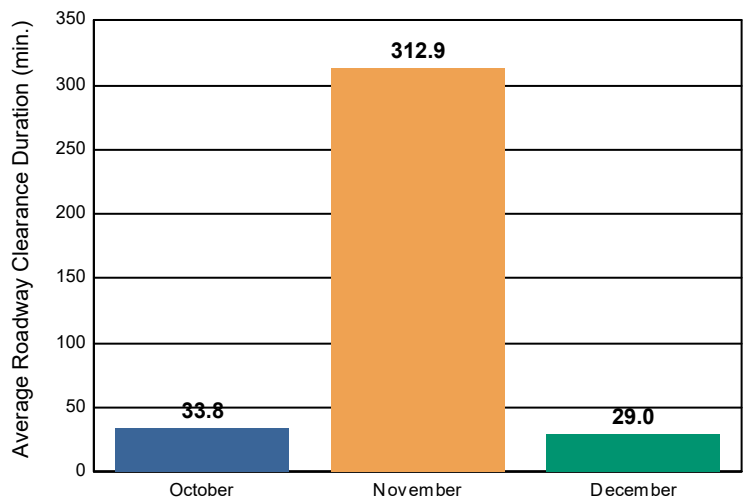
### Incident Clearance Duration



### Open Roads Duration / Month



### Roadway Clearance Duration / Month

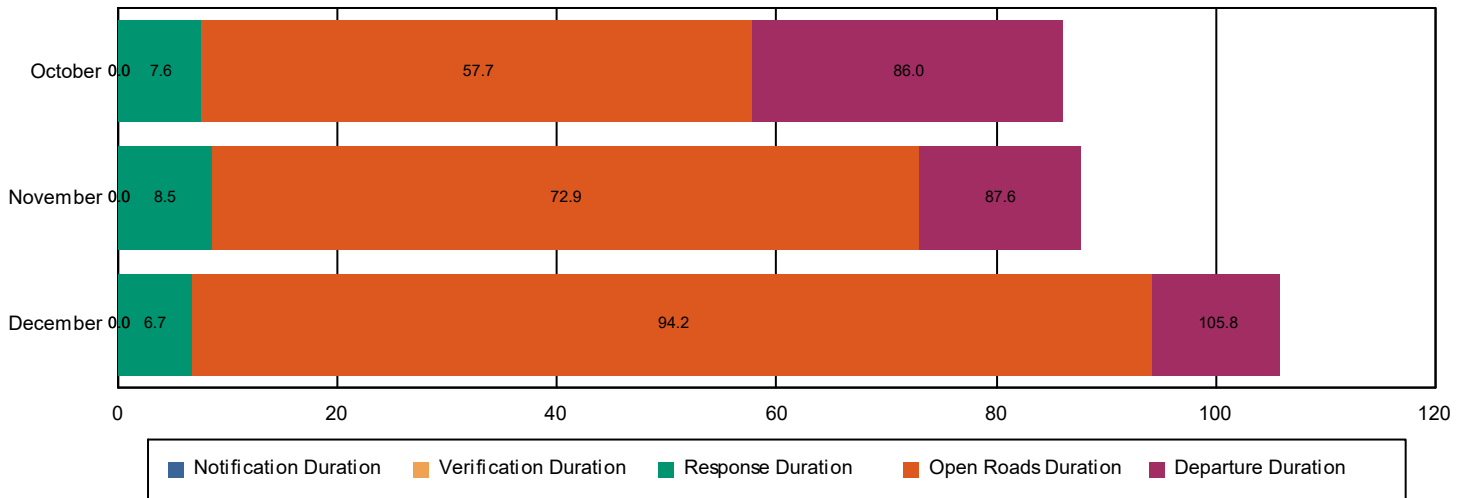


# Performance Measures Summary

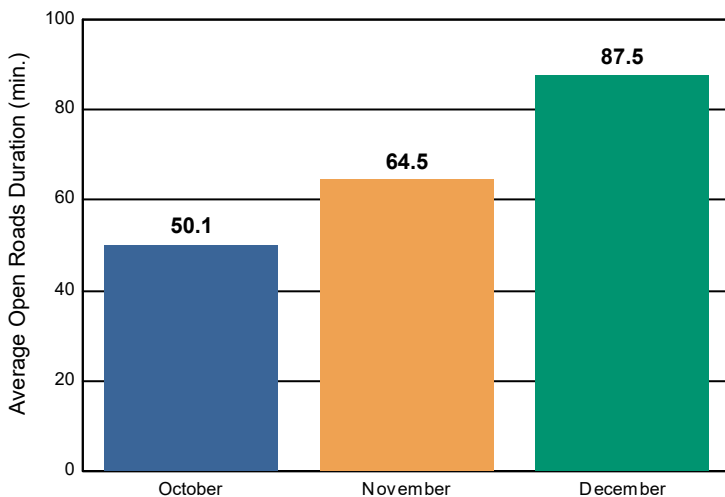
## Incidents without HELP Truck Response

	October	November	December	Total
Events included in Performance Measures	98	113	85	296
Notification Duration (min.)	0.0	0.0	0.0	0.0
Verification Duration (min.)	0.0	0.0	0.0	0.0
Response Duration (min.) [First Notification to First Arrival]	7.6	8.5	6.7	7.6
Open Roads Duration (min.) [First Arrival to Travel Lanes Cleared]	50.1	64.5	87.5	66.5
Departure Duration (min.) [Travel Lanes Cleared to Last Departure]	28.3	14.7	11.6	18.5
<b>Roadway Clearance Duration (min.) [First Notif to Travel Lanes Cleared]</b>	<b>57.7</b>	<b>72.9</b>	<b>94.2</b>	<b>74.2</b>
	<b>86.0</b>	<b>87.6</b>	<b>105.8</b>	<b>92.7</b>

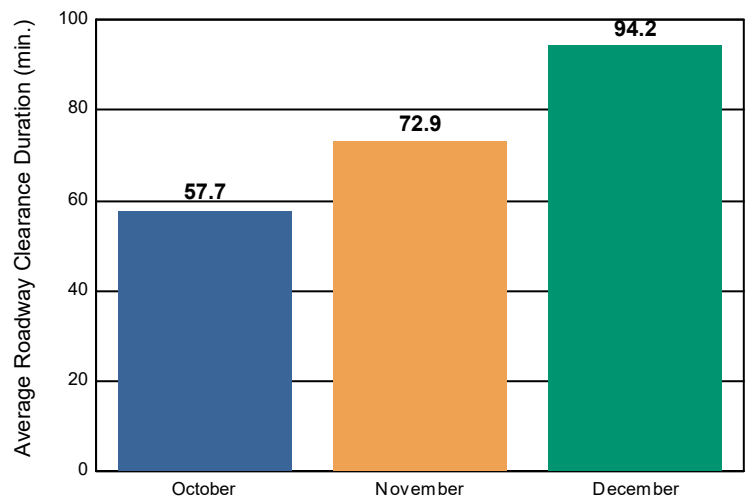
### Incident Clearance Duration



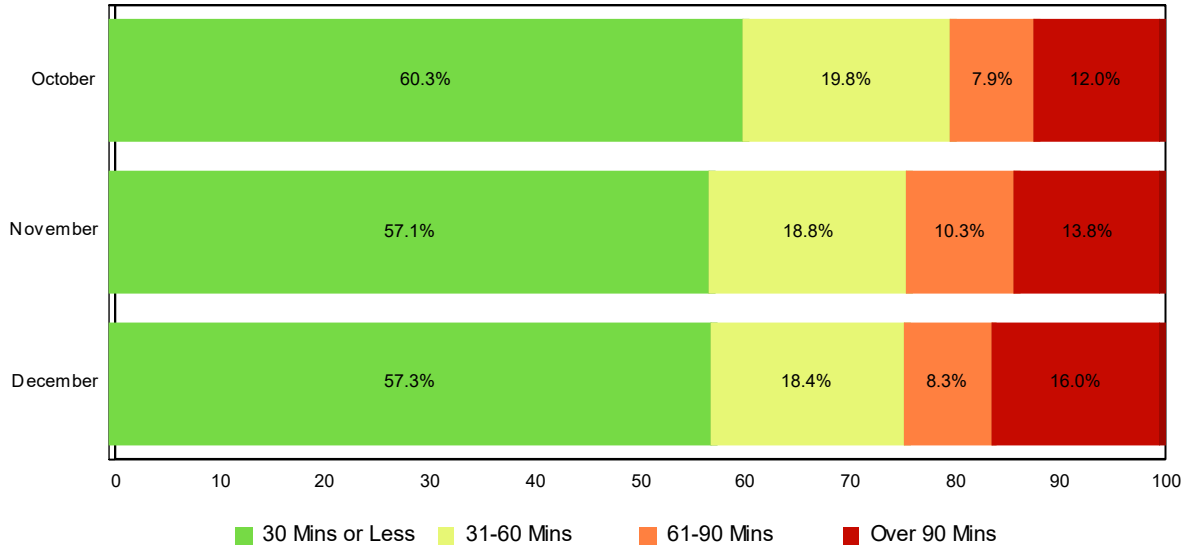
### Open Roads Duration / Month



### Roadway Clearance Duration / Month

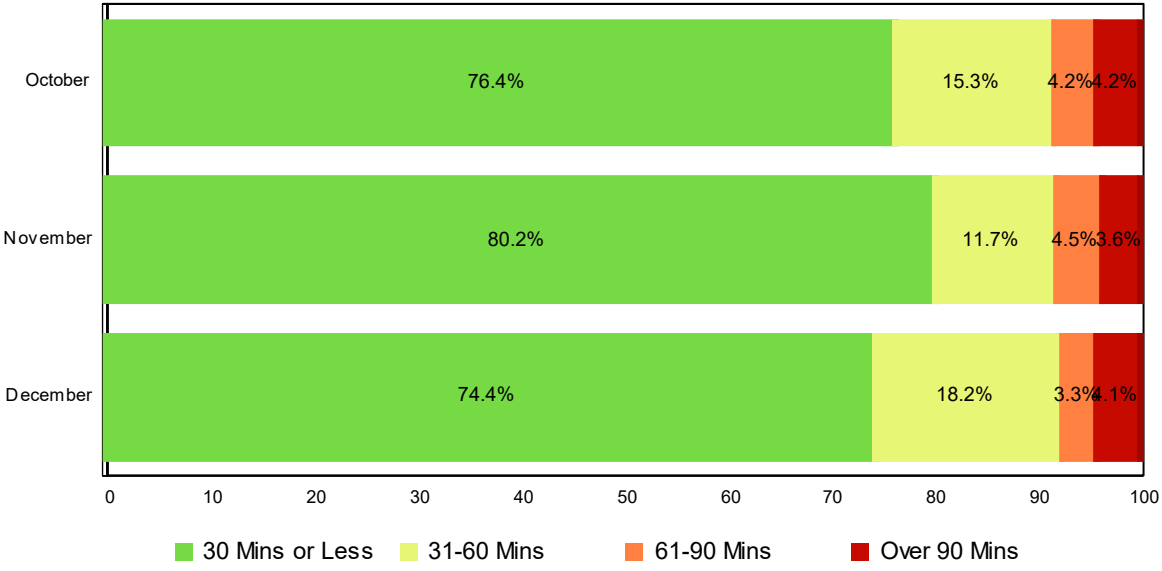


# Lane Blockage Clearance Times - Overall



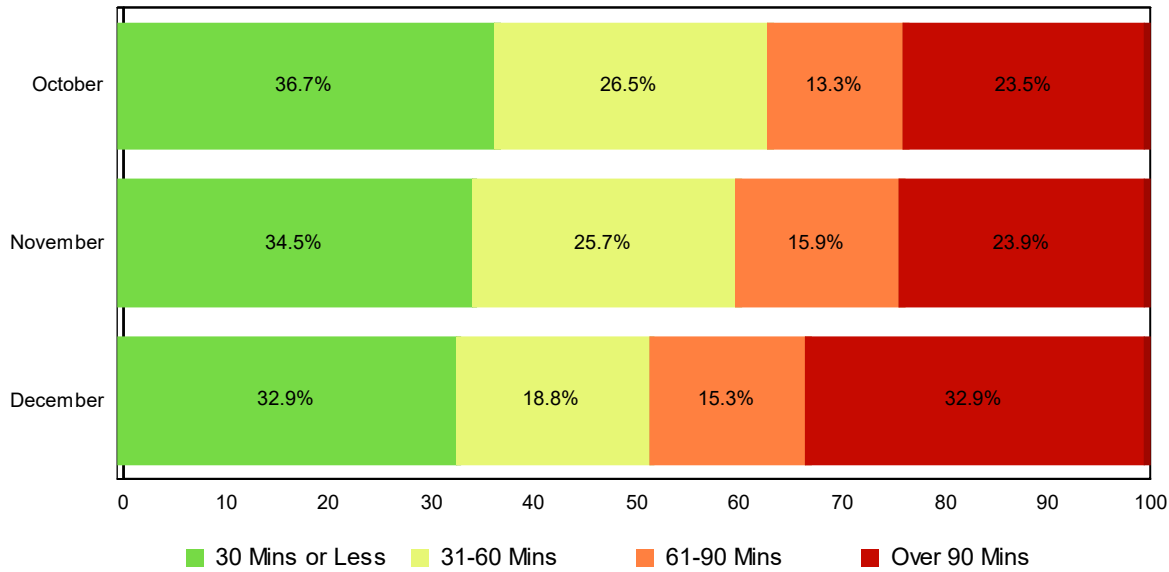
Month	30 Mins or Less	31-60 Mins	61-90 Mins	Over 90 Mins	Total # of Events
October	146	48	19	29	242
November	128	42	23	31	224
December	118	38	17	33	206
<b>Total # of Events</b>	<b>392</b>	<b>128</b>	<b>59</b>	<b>93</b>	<b>672</b>

# Lane Blockage Clearance Times - with HELP Truck Response



Month	30 Mins or Less	31-60 Mins	61-90 Mins	Over 90 Mins	Total # of Events
October	110	22	6	6	144
November	89	13	5	4	111
December	90	22	4	5	121
<b>Total # of Events</b>	<b>289</b>	<b>57</b>	<b>15</b>	<b>15</b>	<b>376</b>

## Lane Blockage Clearance Times - without HELP Truck Response



Month	30 Mins or Less	31-60 Mins	61-90 Mins	Over 90 Mins	Total # of Events
October	36	26	13	23	98
November	39	29	18	27	113
December	28	16	13	28	85
<b>Total # of Events</b>	<b>103</b>	<b>71</b>	<b>44</b>	<b>78</b>	<b>296</b>

## All Incidents with Travel Lane Blockage and HELP Truck Response

No. of Lanes Blocked	%	Count	%	Count	%	Count	%	Count	Avg Clear Time (Min)
1	84	224	96	256	98	262	2	4	17
2	62	58	84	78	92	86	8	7	43
3	50	6	75	9	75	9	25	3	56
4	25	1	75	3	100	4	0	0	51
5	0	0	0	0	0	0	100	1	266
<b>Totals</b>	<b>77</b>	<b>289</b>	<b>92</b>	<b>346</b>	<b>96</b>	<b>361</b>	<b>4</b>	<b>15</b>	<b>26</b>

<=30 Mins

<=60 Mins

<=90 Mins

>90 Mins

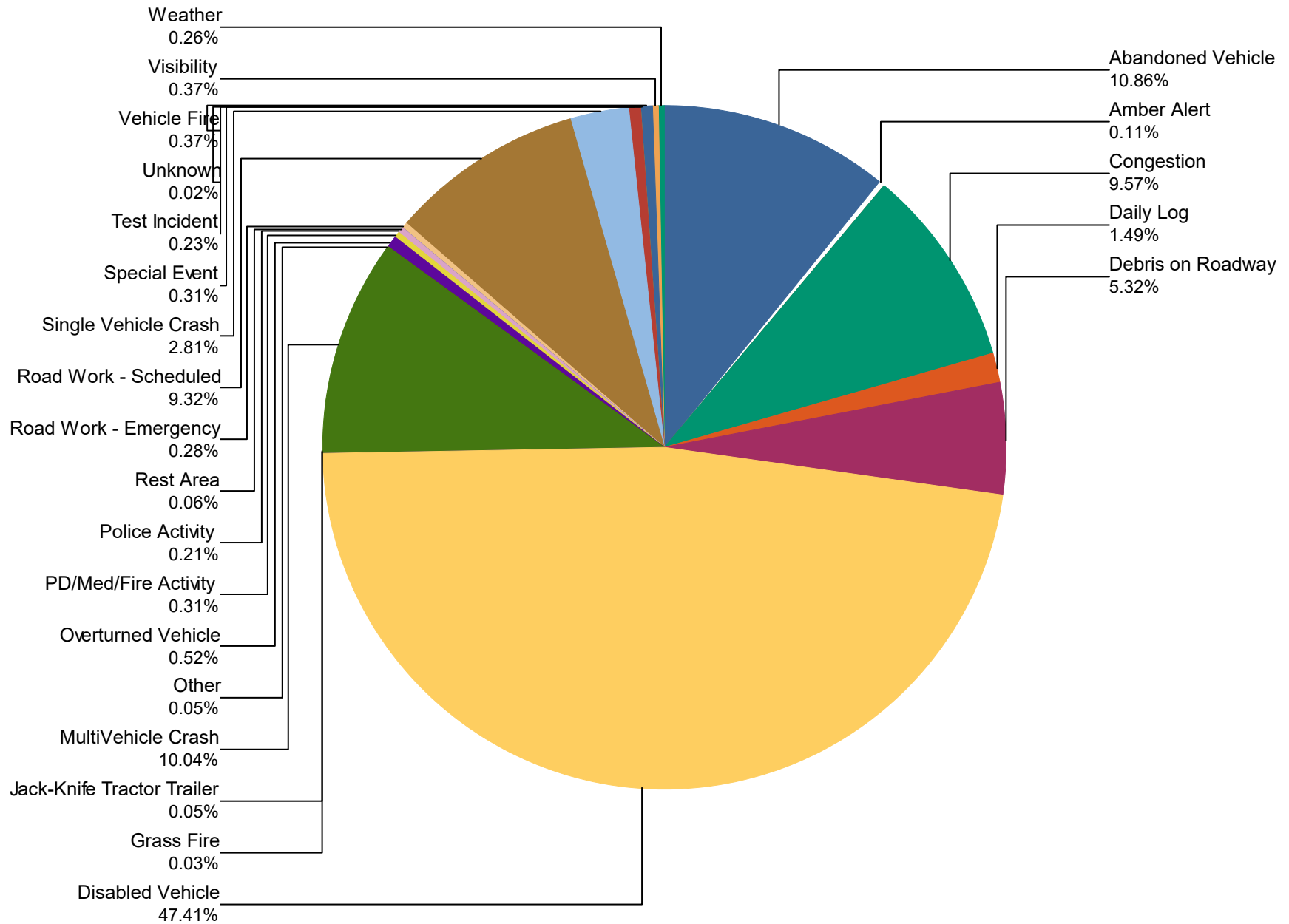


## Travel Lane Blockage Events- Roadway

Roadway	Lane Blockage Events Count	All Incidents	% of Incidents with Lane Blockage
I0026	18	25	72.0
I0040	343	3,260	10.5
I0075	91	654	13.9
I0081	32	67	47.8
I0140	17	169	10.1
I0275	27	204	13.2
I0640	62	886	7.0
Region 1 TMC	0	93	0.0
SR001	6	8	75.0
SR009	2	2	100.0
SR029	1	1	100.0
SR031	1	1	100.0
SR032	1	1	100.0
SR034	5	5	100.0
SR044	2	2	100.0
SR061	0	2	0.0
SR062	3	4	75.0
SR066	2	2	100.0
SR068	2	2	100.0
SR070	2	2	100.0
SR071	7	8	87.5
SR073	2	2	100.0
SR081	2	2	100.0
SR092	4	4	100.0
SR095	3	3	100.0
SR107	3	3	100.0
SR115	9	41	22.0
SR131	6	6	100.0
SR139	1	1	100.0

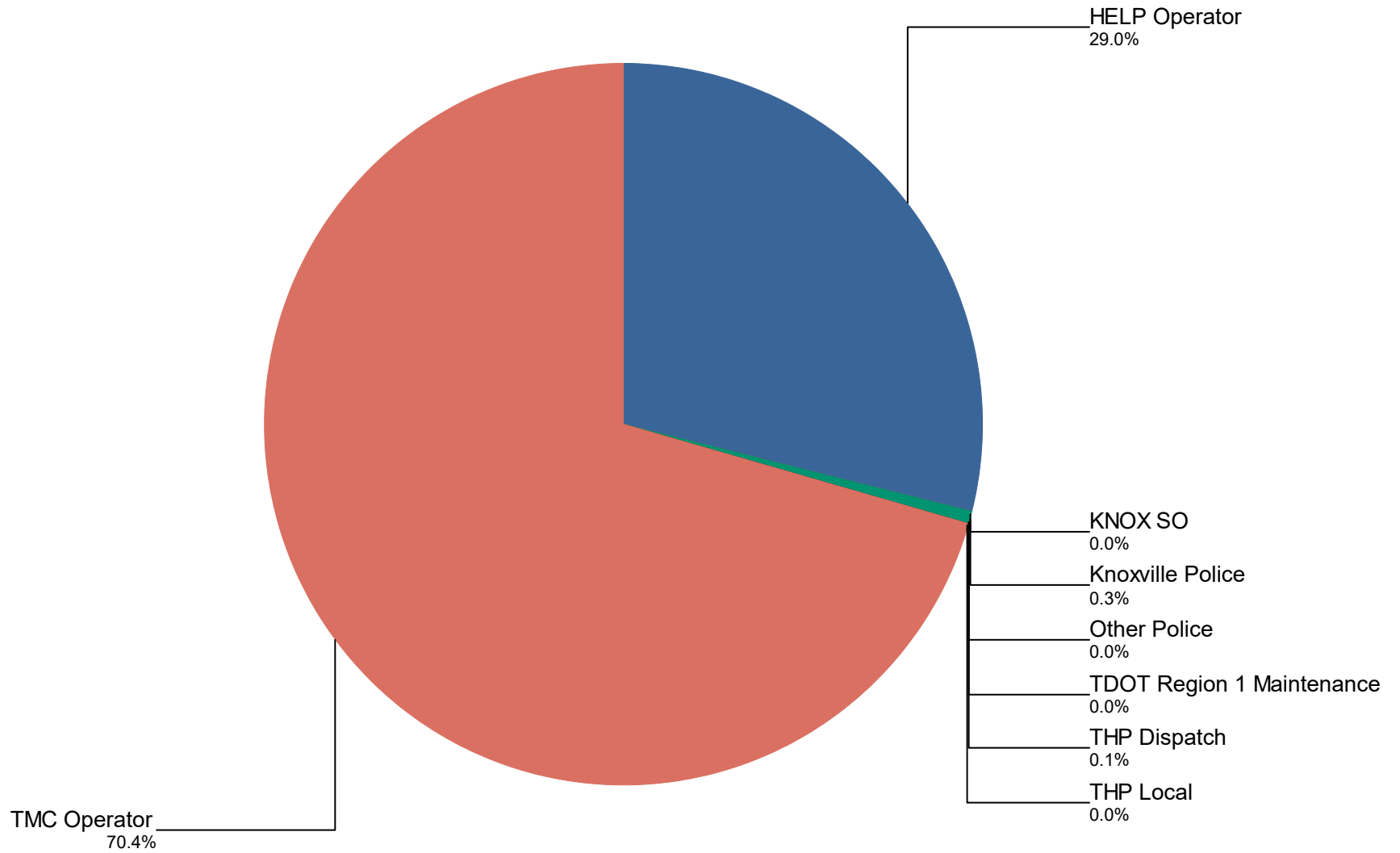
<b>SR160</b>	1	1	<b>100.0</b>
<b>SR162</b>	4	29	<b>13.8</b>
<b>SR168</b>	2	2	<b>100.0</b>
<b>SR170</b>	4	4	<b>100.0</b>
<b>SR297</b>	2	2	<b>100.0</b>
<b>SR304</b>	2	2	<b>100.0</b>
<b>SR338</b>	2	2	<b>100.0</b>
<b>SR381</b>	1	1	<b>100.0</b>
<b>All Roadways</b>	<b>672</b>	<b>5,503</b>	<b>12.2</b>

## Percentage of Event Types for All Events in Current Quarter



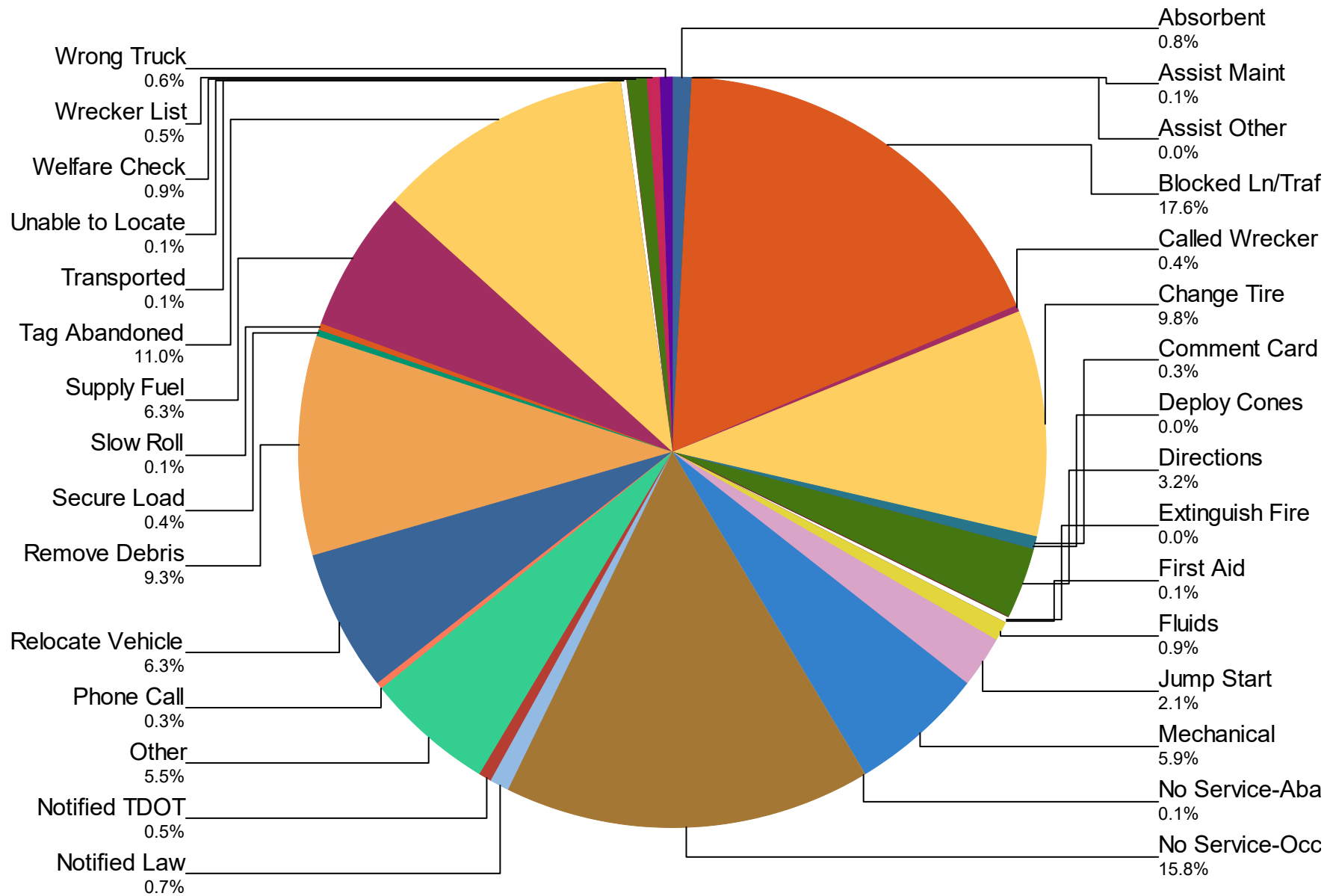
<b>Event Types for All Events</b>	<b>October</b>	<b>November</b>	<b>December</b>	<b>Total</b>	<b>%</b>
<b>Abandoned Vehicle</b>	236	238	196	<b>670</b>	<b>10.9%</b>
<b>Amber Alert</b>	3	3	1	<b>7</b>	<b>0.1%</b>
<b>Congestion</b>	192	233	165	<b>590</b>	<b>9.6%</b>
<b>Daily Log</b>	31	30	31	<b>92</b>	<b>1.5%</b>
<b>Debris on Roadway</b>	104	117	107	<b>328</b>	<b>5.3%</b>
<b>Disabled Vehicle</b>	974	1,041	909	<b>2,924</b>	<b>47.4%</b>
<b>Grass Fire</b>	0	1	1	<b>2</b>	<b>0.0%</b>
<b>Jack-Knife Tractor Trailer</b>	0	0	3	<b>3</b>	<b>0.0%</b>
<b>MultiVehicle Crash</b>	216	227	176	<b>619</b>	<b>10.0%</b>
<b>Other</b>	1	2	0	<b>3</b>	<b>0.0%</b>
<b>Overtuned Vehicle</b>	9	13	10	<b>32</b>	<b>0.5%</b>
<b>PD/Med/Fire Activity</b>	8	4	7	<b>19</b>	<b>0.3%</b>
<b>Police Activity</b>	4	5	4	<b>13</b>	<b>0.2%</b>
<b>Rest Area</b>	3	1	0	<b>4</b>	<b>0.1%</b>
<b>Road Work - Emergency</b>	9	5	3	<b>17</b>	<b>0.3%</b>
<b>Road Work - Scheduled</b>	268	157	150	<b>575</b>	<b>9.3%</b>
<b>Single Vehicle Crash</b>	68	41	64	<b>173</b>	<b>2.8%</b>
<b>Special Event</b>	8	8	3	<b>19</b>	<b>0.3%</b>
<b>Test Incident</b>	1	1	12	<b>14</b>	<b>0.2%</b>
<b>Unknown</b>	1	0	0	<b>1</b>	<b>0.0%</b>
<b>Vehicle Fire</b>	5	10	8	<b>23</b>	<b>0.4%</b>
<b>Visibility</b>	5	0	18	<b>23</b>	<b>0.4%</b>
<b>Weather</b>	9	2	5	<b>16</b>	<b>0.3%</b>
<b>Total</b>	<b>2,155</b>	<b>2,139</b>	<b>1,873</b>	<b>6,167</b>	<b>100.0%</b>

# Incidents by Detection Source



<b>Notifier Agency</b>	<b>October</b>	<b>November</b>	<b>December</b>	<b>Total</b>	<b>%</b>
<b>HELP Operator</b>	685	635	469	1,789	29.0
<b>KNOX SO</b>	0	1	0	1	0.0
<b>Knoxville Police</b>	3	8	10	21	0.3
<b>Other Police</b>	0	0	1	1	0.0
<b>TDOT Region 1 Maintenance</b>	0	2	0	2	0.0
<b>THP Dispatch</b>	1	1	5	7	0.1
<b>THP Local</b>	1	1	1	3	0.0
<b>TMC Operator</b>	1,465	1,491	1,387	4,343	70.4
<b>Total</b>	<b>2,155</b>	<b>2,139</b>	<b>1,873</b>	<b>6,167</b>	<b>100.0%</b>

## Percentage of Activity Types for HELP Truck Activities in Current Quarter



**Activity Types for All Activities**

	October	November	December	Total	%
Absorbent	16	18	15	49	0.8
Assist Maint	1	3	1	5	0.1
Assist Other	1	1	0	2	0.0
Blocked Ln/Traf Ctrl	377	352	326	1,055	17.6
Called Wrecker	9	8	8	25	0.4
Change Tire	215	213	159	587	9.8
Comment Card	9	7	5	21	0.3
Deploy Cones	1	0	1	2	0.0
Directions	55	86	54	195	3.2
Extinguish Fire	0	1	0	1	0.0
First Aid	3	2	1	6	0.1
Fluids	22	20	12	54	0.9
Jump Start	33	58	37	128	2.1
Mechanical	94	139	119	352	5.9
No Service-Abandon	2	2	5	9	0.1
No Service-Occupied	325	306	316	947	15.8
Notified Law	6	20	18	44	0.7
Notified TDOT	13	12	6	31	0.5
Other	115	110	107	332	5.5
Phone Call	2	7	7	16	0.3
Relocate Vehicle	137	137	107	381	6.3
Remove Debris	195	191	172	558	9.3
Secure Load	9	7	8	24	0.4
Slow Roll	3	2	4	9	0.1
Supply Fuel	125	141	111	377	6.3
Tag Abandoned	231	239	191	661	11.0
Transported	1	1	2	4	0.1
Unable to Locate	3	2	2	7	0.1
Welfare Check	23	14	15	52	0.9
Wrecker List	11	13	7	31	0.5
Wrong Truck	12	14	11	37	0.6



	October	November	December	<b>Total</b>	<b>%</b>
<b>Total</b>	<b>2,049</b>	<b>2,126</b>	<b>1,827</b>	<b>6,002</b>	<b>100.0%</b>

## DMS Duration

---

	<b>Oct</b>	<b>Nov</b>	<b>Dec</b>	<b>Quarter</b>
Avg % ON Time	24.4	20.5	29.1	24.7
Avg Post Time (hr)	2.3	2.7	2.9	2.6
Avg Messages Per Sign	77.3	54.8	75.6	69.2
Total Messages Posted	2,474	1,755	2,418	6,647