

Includes All Responders

Reporting Period: October 1, 2021 to December 31, 2021

Region 2

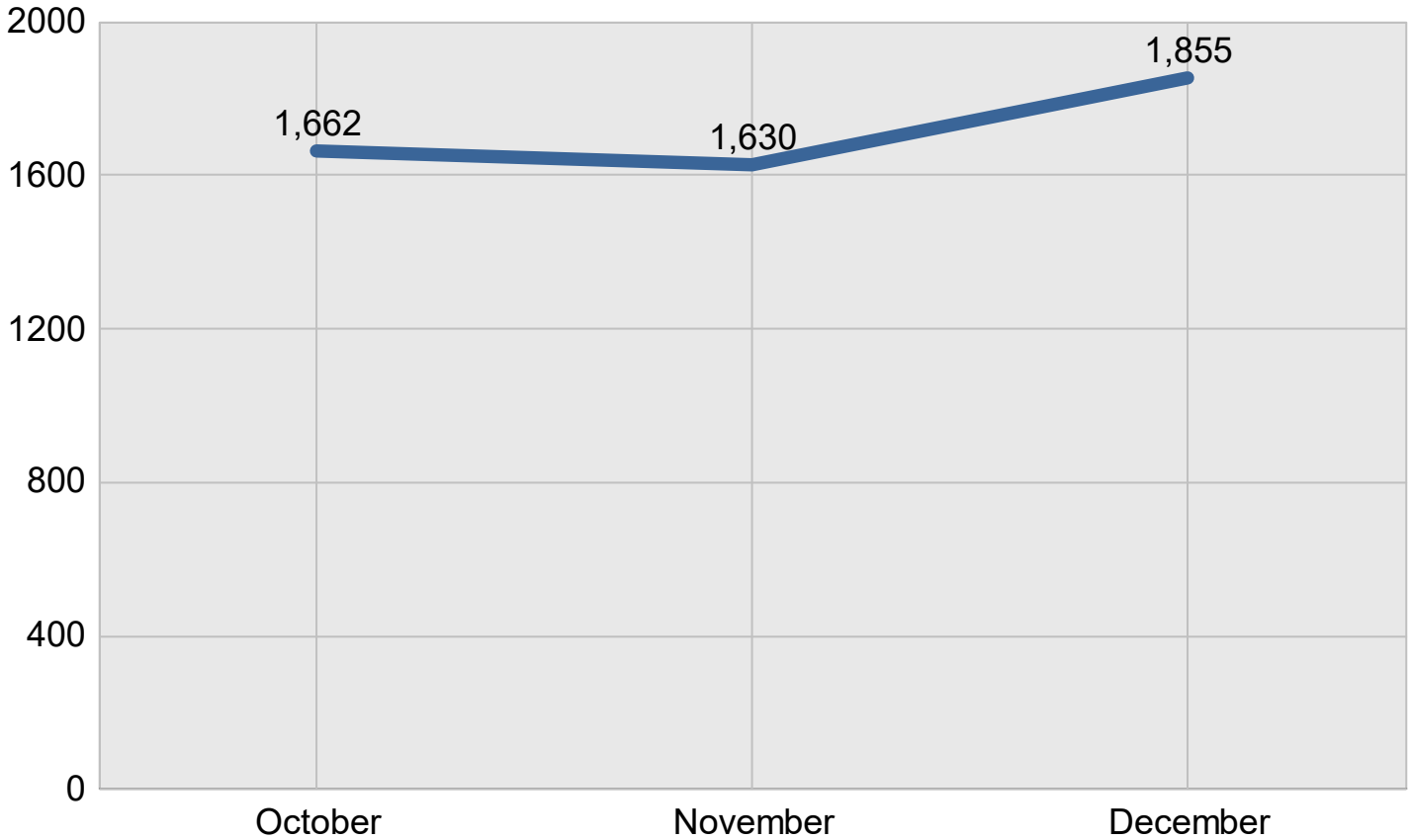
Created on: March 28, 2022 3:23 pm County: All Counties

Report Template version 2.0

Total Incidents Managed This Quarter: 5,147

Incidents Managed

Incidents Managed - Monthly

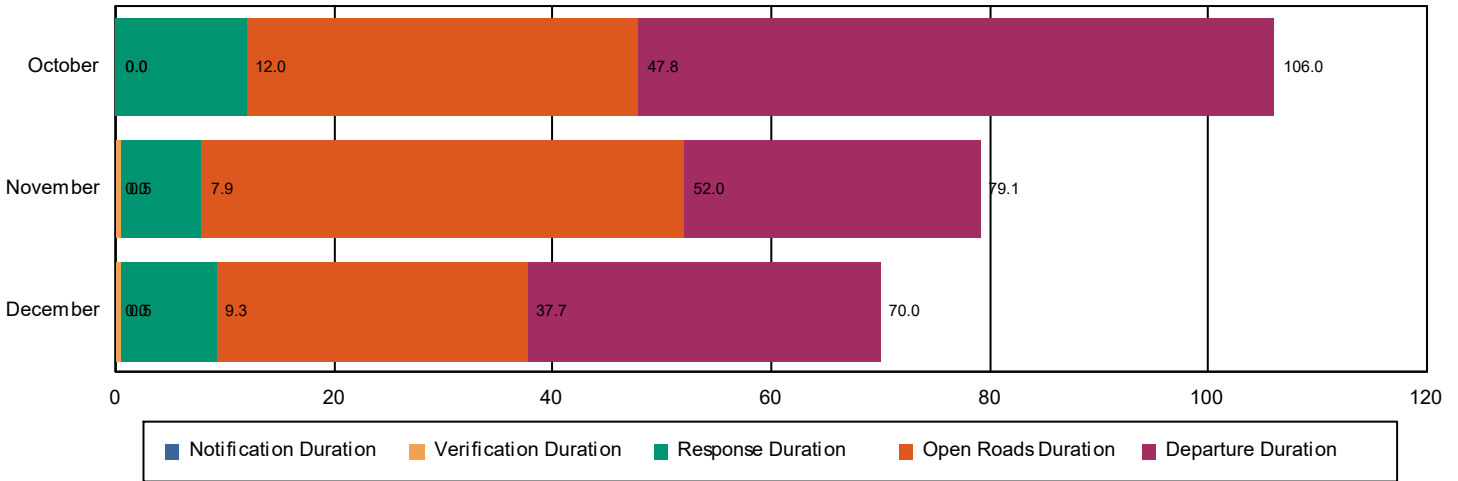


Performance Measures Summary

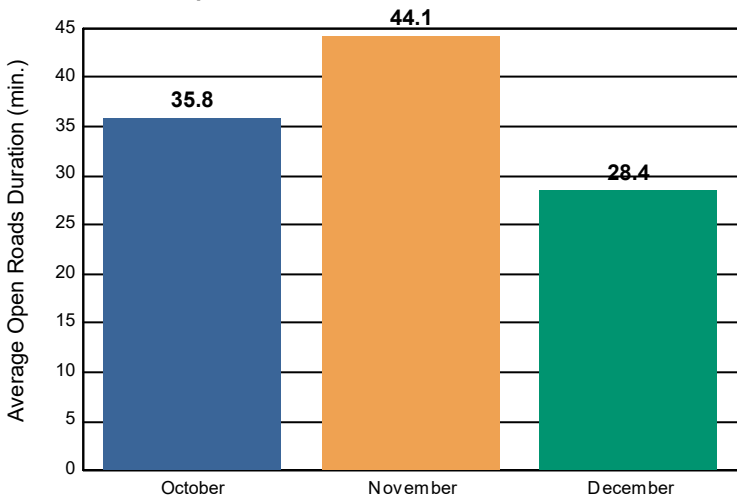
Incidents Overall Response

	October	November	December	Total
Events included in Performance Measures	312	377	352	1,041
Notification Duration (min.)*	0.0	0.0	0.0	0.0
Verification Duration (min.)	0.0	0.5	0.5	0.4
Response Duration (min.) [First Notification to First Arrival]	12.0	7.4	8.8	9.2
Open Roads Duration (min.) [First Arrival to Travel Lanes Cleared]	35.8	44.1	28.4	36.4
Departure Duration (min.) [Travel Lanes Cleared to Last Departure]	58.2	27.1	32.3	38.1
Roadway Clearance Duration (min.) [First Notif to Travel Lanes Cleared]	47.8	52.0	37.7	46.0
	106.0	79.1	70.0	84.1

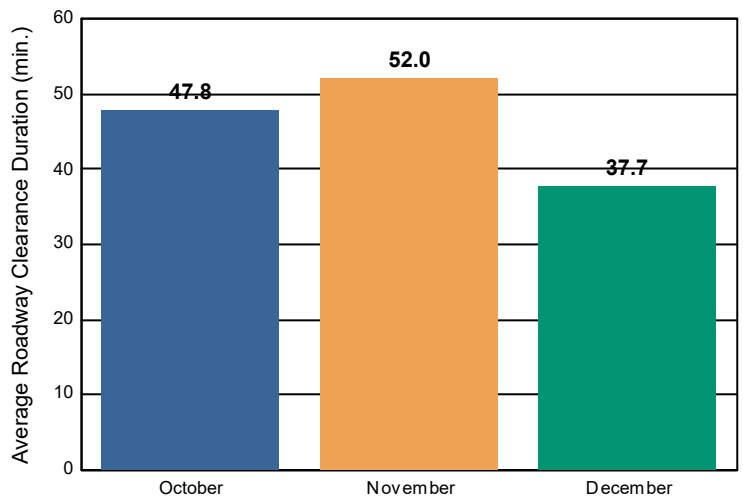
Incident Clearance Duration



Open Roads Duration / Month



Roadway Clearance Duration / Month

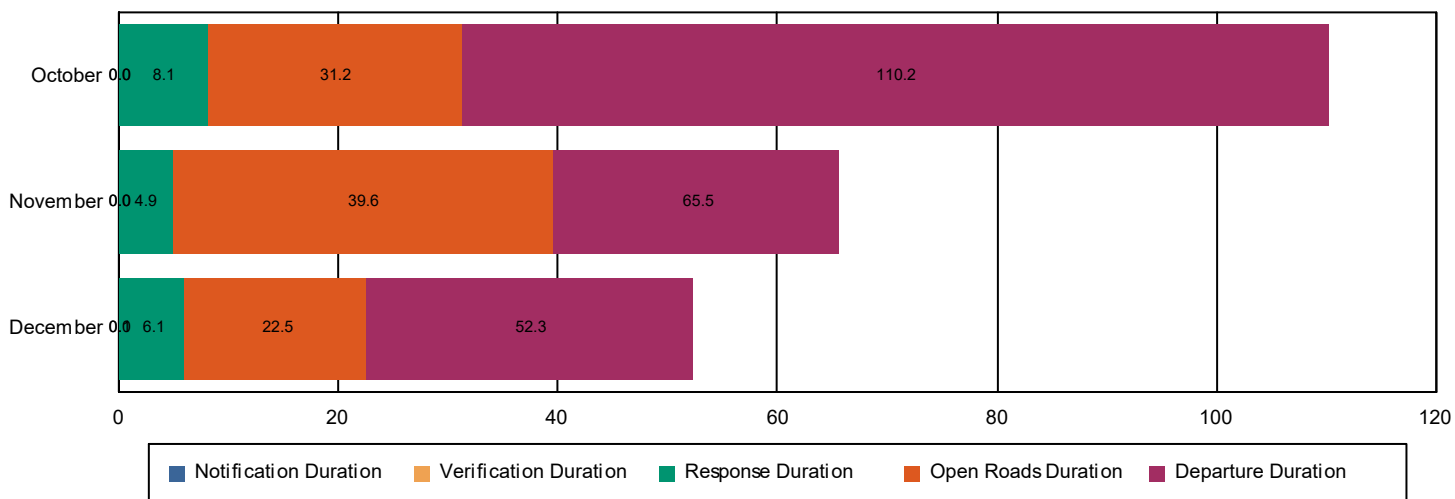


Performance Measures Summary

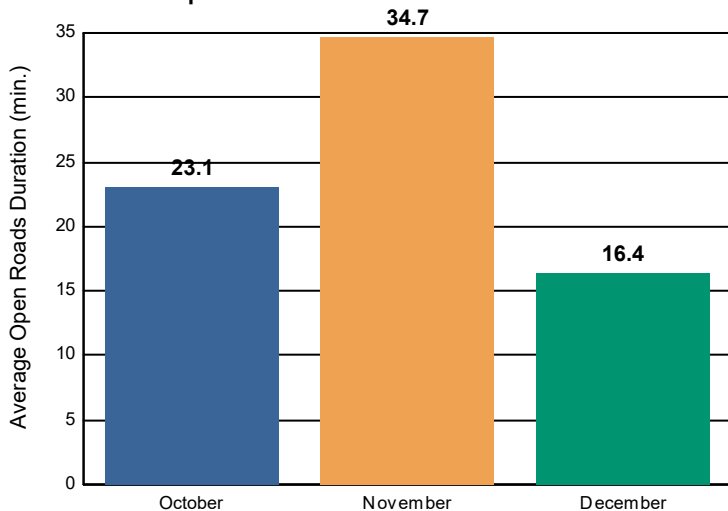
Incidents with HELP Truck Response

	October	November	December	Total
Events included in Performance Measures	181	234	213	628
Notification Duration (min.)	0.0	0.0	0.0	0.0
Verification Duration (min.)	0.0	0.0	0.1	0.0
Response Duration (min.) [First Notification to First Arrival]	8.1	4.8	6.0	6.2
Open Roads Duration (min.) [First Arrival to Travel Lanes Cleared]	23.1	34.7	16.4	25.2
Departure Duration (min.) [Travel Lanes Cleared to Last Departure]	78.9	25.9	29.8	42.5
Roadway Clearance Duration (min.) [First Notif to Travel Lanes Cleared]	31.2	39.6	22.5	31.4
	110.2	65.5	52.3	73.9

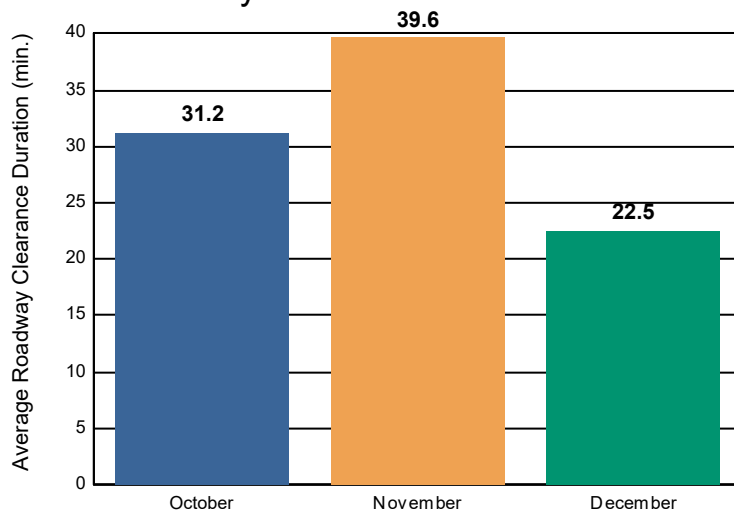
Incident Clearance Duration



Open Roads Duration / Month



Roadway Clearance Duration / Month

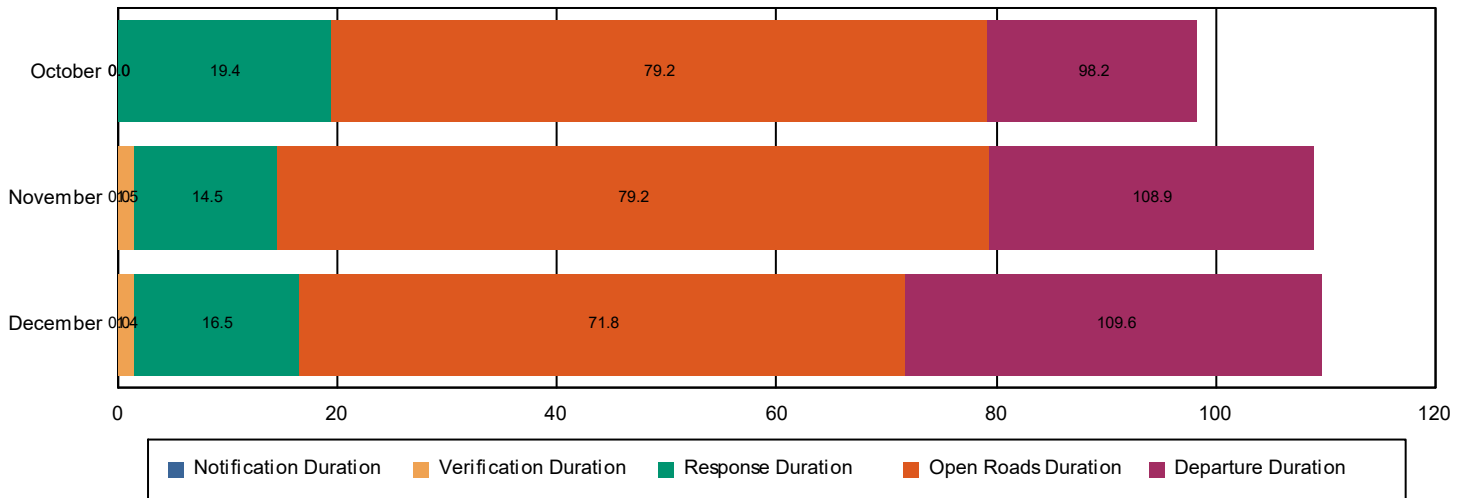


Performance Measures Summary

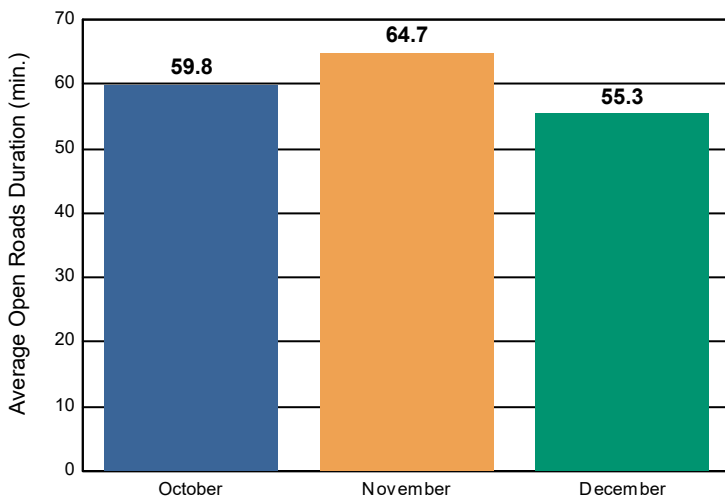
Incidents without HELP Truck Response

	October	November	December	Total
Events included in Performance Measures	131	143	139	413
Notification Duration (min.)	0.0	0.0	0.0	0.0
Verification Duration (min.)	0.0	1.5	1.4	1.0
Response Duration (min.) [First Notification to First Arrival]	19.4	13.0	15.1	15.7
Open Roads Duration (min.) [First Arrival to Travel Lanes Cleared]	59.8	64.7	55.3	60.1
Departure Duration (min.) [Travel Lanes Cleared to Last Departure]	19.0	29.6	37.8	28.8
Roadway Clearance Duration (min.) [First Notif to Travel Lanes Cleared]	79.2	79.2	71.8	76.8
	98.2	108.9	109.6	105.7

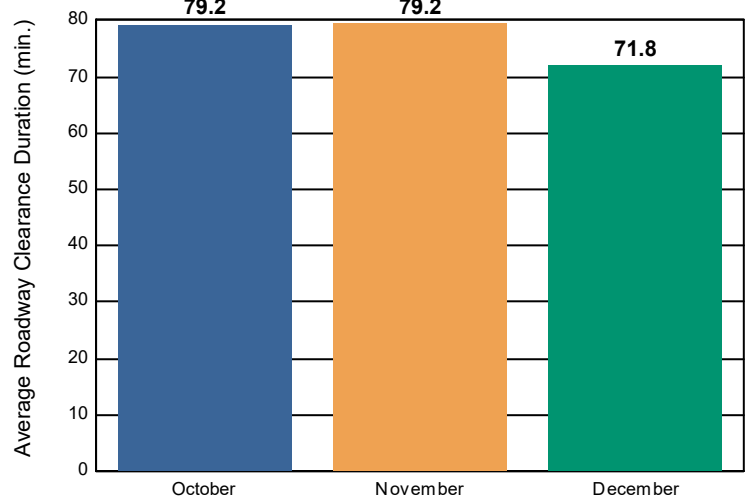
Incident Clearance Duration



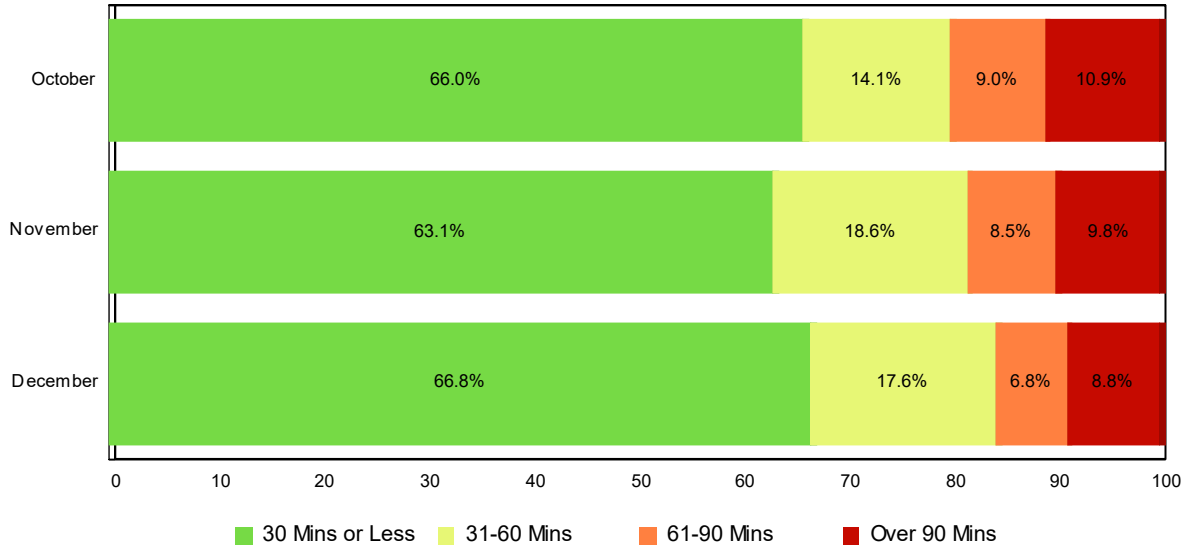
Open Roads Duration / Month



Roadway Clearance Duration / Month

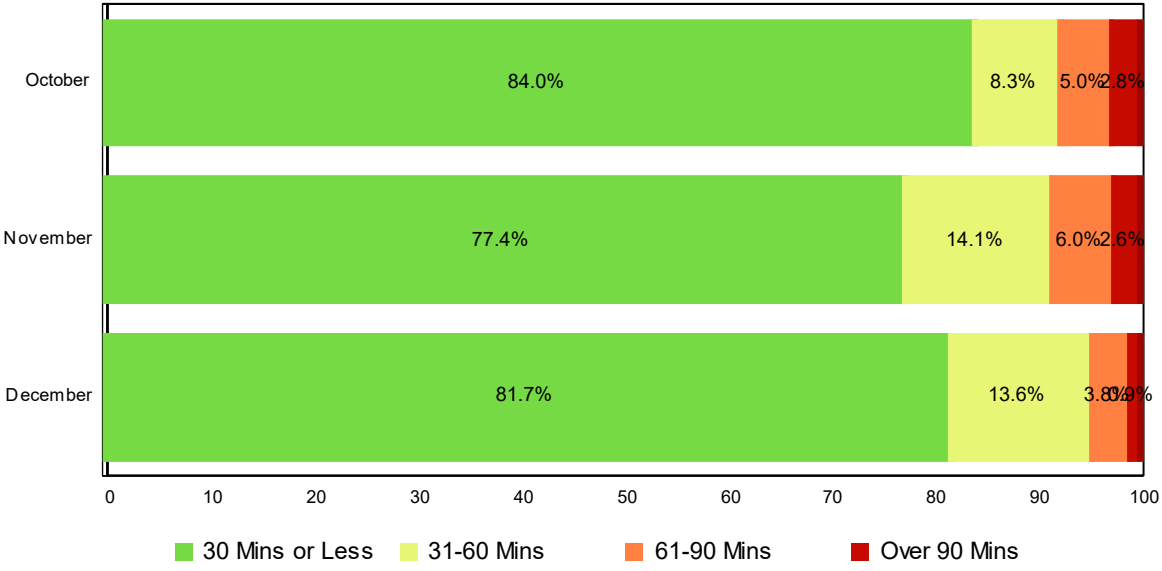


Lane Blockage Clearance Times - Overall



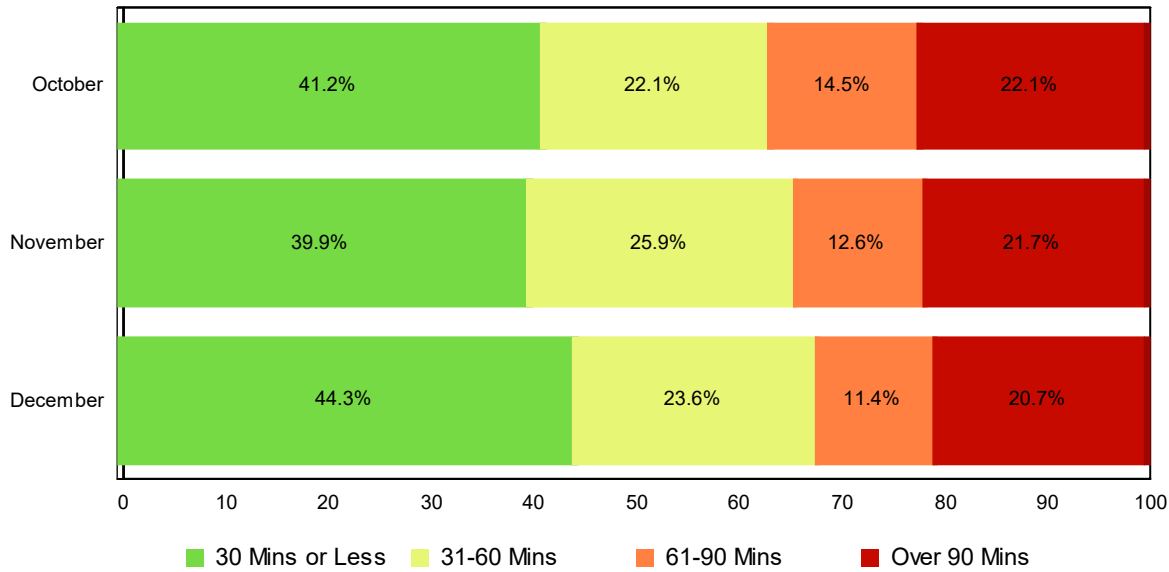
Month	30 Mins or Less	31-60 Mins	61-90 Mins	Over 90 Mins	Total # of Events
October	206	44	28	34	312
November	238	70	32	37	377
December	235	62	24	31	352
Total # of Events	679	176	84	102	1,041

Lane Blockage Clearance Times - with HELP Truck Response



Month	30 Mins or Less	31-60 Mins	61-90 Mins	Over 90 Mins	Total # of Events
October	152	15	9	5	181
November	181	33	14	6	234
December	174	29	8	2	213
Total # of Events	507	77	31	13	628

Lane Blockage Clearance Times - without HELP Truck Response



Month	30 Mins or Less	31-60 Mins	61-90 Mins	Over 90 Mins	Total # of Events
October	54	29	19	29	131
November	57	37	18	31	143
December	62	33	16	29	140
Total # of Events	173	99	53	89	414

All Incidents with Travel Lane Blockage and HELP Truck Response

No. of Lanes Blocked	%	Count	%	Count	%	Count	%	Count	Avg Clear Time (Min)
1	85	374	96	422	99	437	1	3	15
2	72	109	89	134	97	146	3	5	29
3	67	18	78	21	93	25	7	2	35
4	56	5	67	6	67	6	33	3	62
5	100	1	100	1	100	1	0	0	8
Totals	81	507	93	584	98	615	2	13	20

<=30 Mins

<=60 Mins

<=90 Mins

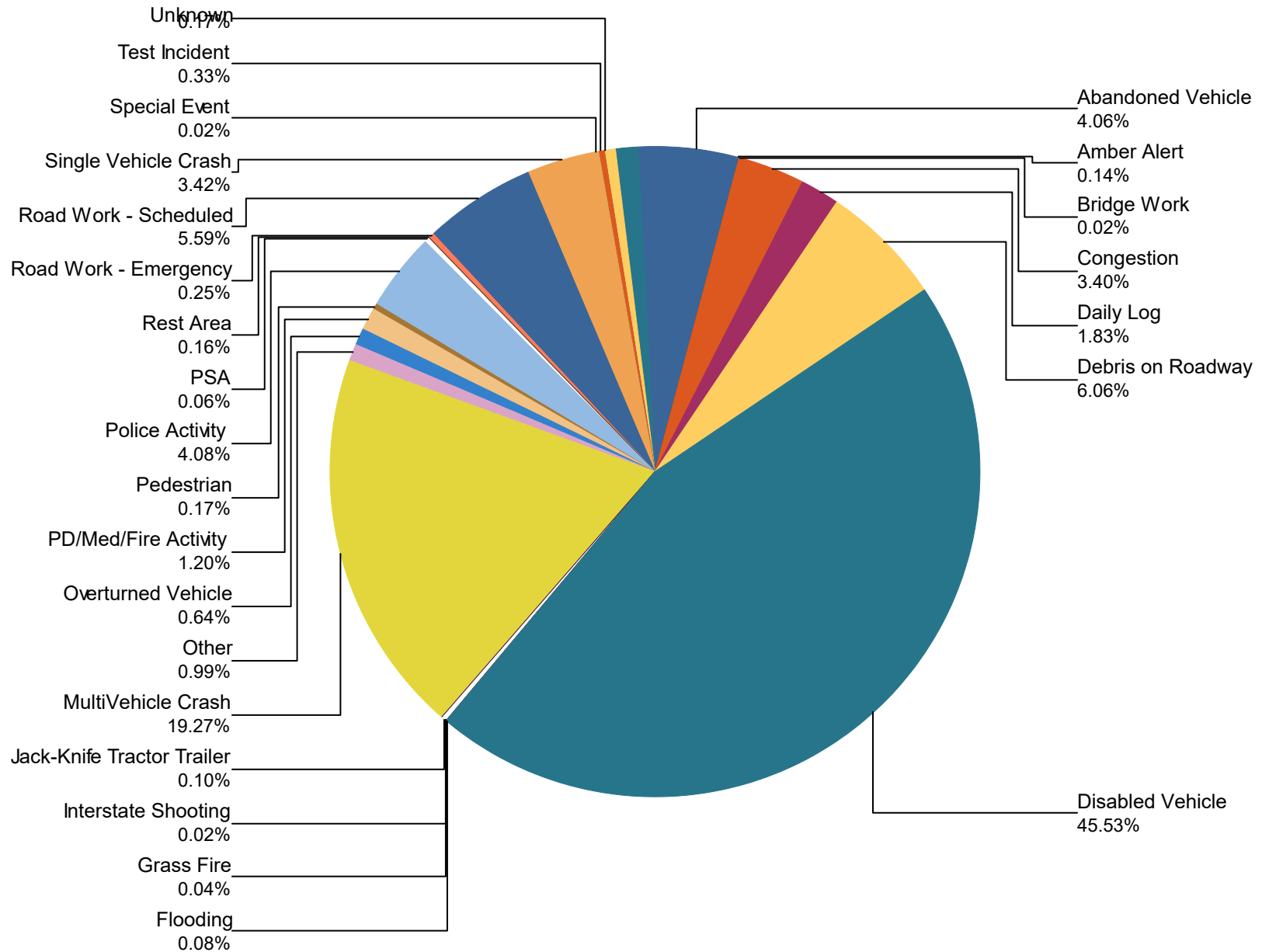
>90 Mins

Travel Lane Blockage Events- Roadway

Roadway	Lane Blockage Events Count	All Incidents	% of Incidents with Lane Blockage
I0024	358	1,489	24.0
I0040	39	108	36.1
I0075	347	1,884	18.4
I0124	1	6	16.7
Region 2 TMC	0	95	0.0
SR001	6	18	33.3
SR002	9	27	33.3
SR008	9	10	90.0
SR016	0	1	0.0
SR017	0	1	0.0
SR024	2	14	14.3
SR026	1	9	11.1
SR027	1	3	33.3
SR028	3	18	16.7
SR029	53	310	17.1
SR030	5	20	25.0
SR033	0	4	0.0
SR039	3	4	75.0
SR040	2	4	50.0
SR052	1	4	25.0
SR053	3	6	50.0
SR055	0	7	0.0
SR056	4	11	36.4
SR058	4	17	23.5
SR060	1	10	10.0
SR062	1	1	100.0
SR064	0	1	0.0
SR068	2	7	28.6
SR074	1	3	33.3

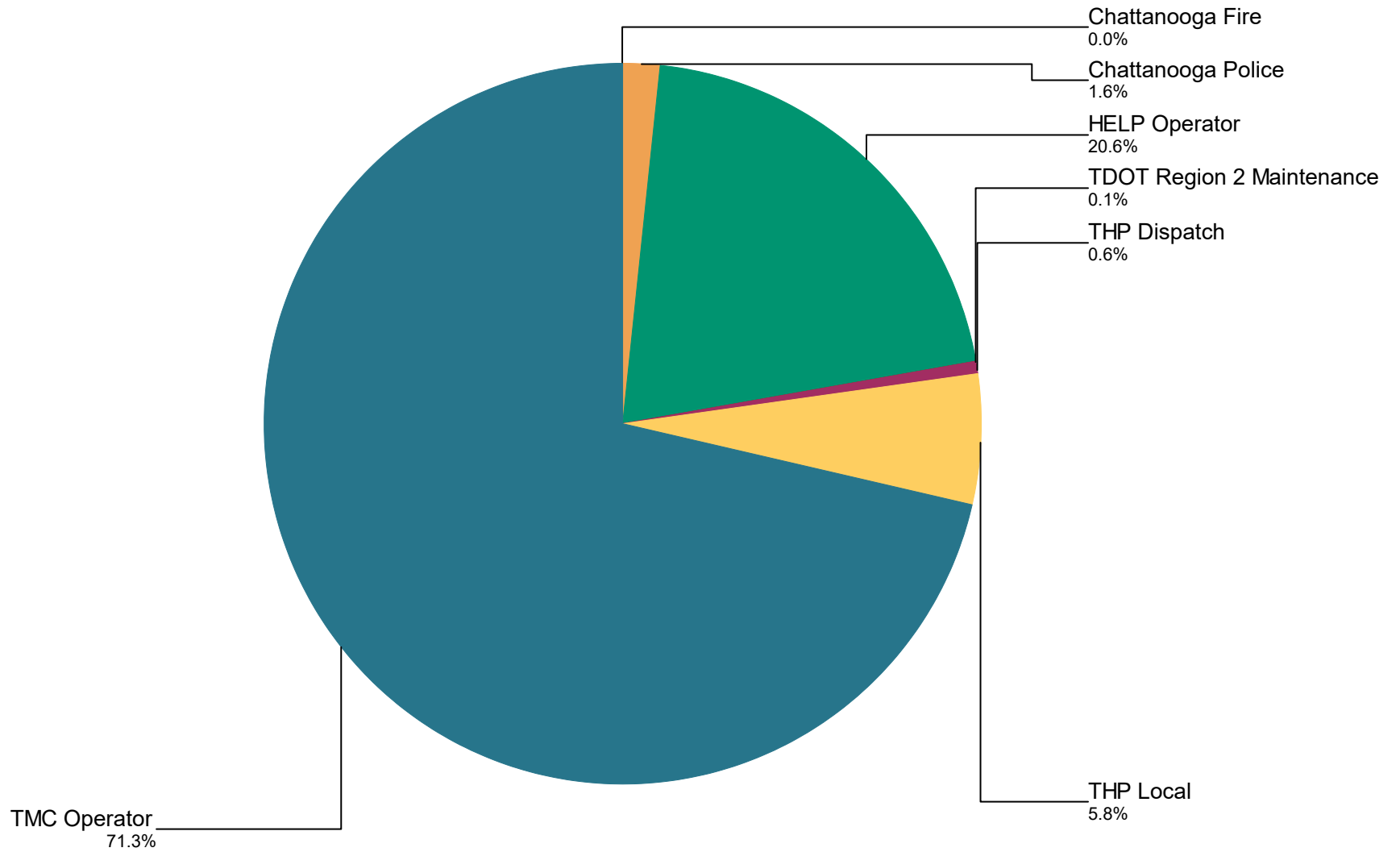
SR084	5	6	83.3
SR096	2	9	22.2
SR101	0	14	0.0
SR108	0	1	0.0
SR111	4	16	25.0
SR122	1	1	100.0
SR127	2	5	40.0
SR135	1	9	11.1
SR136	0	1	0.0
SR153	153	522	29.3
SR154	0	1	0.0
SR156	1	2	50.0
SR163	3	5	60.0
SR164	0	1	0.0
SR282	0	1	0.0
SR283	0	1	0.0
SR285	0	1	0.0
SR290	0	2	0.0
SR298	1	1	100.0
SR299	0	2	0.0
SR305	0	2	0.0
SR307	0	1	0.0
SR308	0	2	0.0
SR310	1	1	100.0
SR311	2	4	50.0
SR312	0	5	0.0
SR313	0	2	0.0
SR317	4	5	80.0
SR319	3	4	75.0
SR320	2	2	100.0
SR325	0	2	0.0
SR392	0	2	0.0
All Roadways	1,041	4,725	22.0

Percentage of Event Types for All Events in Current Quarter



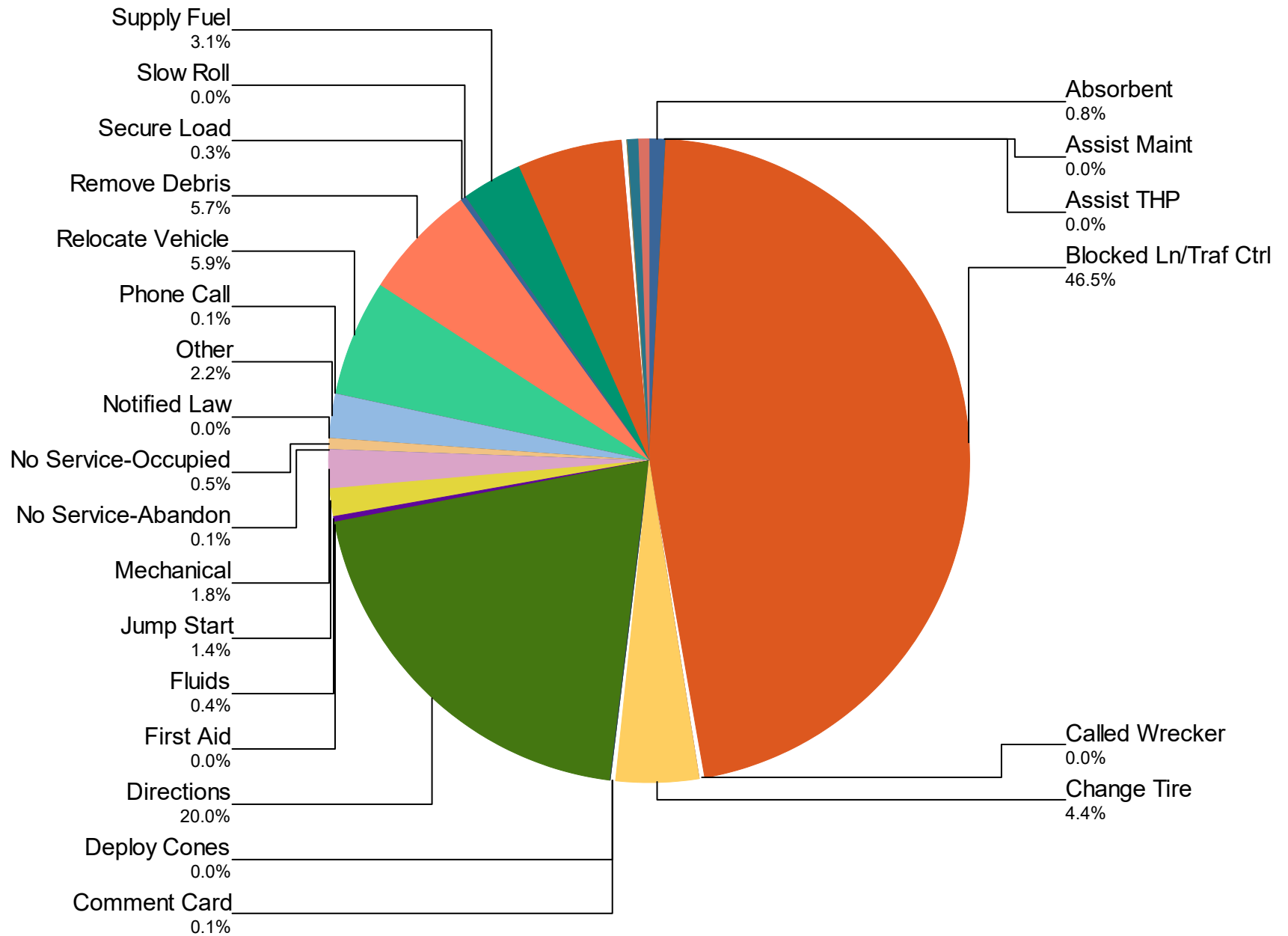
Event Types for All Events	October	November	December	Total	%
Abandoned Vehicle	73	78	58	209	4.1%
Amber Alert	3	3	1	7	0.1%
Bridge Work	0	1	0	1	0.0%
Congestion	45	62	68	175	3.4%
Daily Log	32	31	31	94	1.8%
Debris on Roadway	106	101	105	312	6.1%
Disabled Vehicle	770	704	870	2,344	45.5%
Flooding	4	0	0	4	0.1%
Grass Fire	0	1	1	2	0.0%
Interstate Shooting	0	1	0	1	0.0%
Jack-Knife Tractor Trailer	1	1	3	5	0.1%
MultiVehicle Crash	250	348	394	992	19.3%
Other	2	16	33	51	1.0%
Overturned Vehicle	6	20	7	33	0.6%
PD/Med/Fire Activity	16	24	22	62	1.2%
Pedestrian	2	3	4	9	0.2%
Police Activity	66	75	69	210	4.1%
PSA	3	0	0	3	0.1%
Rest Area	6	1	1	8	0.2%
Road Work - Emergency	8	0	5	13	0.3%
Road Work - Scheduled	138	87	63	288	5.6%
Single Vehicle Crash	61	35	80	176	3.4%
Special Event	0	1	0	1	0.0%
Test Incident	7	4	6	17	0.3%
Unknown	7	2	0	9	0.2%
Vehicle Fire	5	16	8	29	0.6%
Visibility	32	4	7	43	0.8%
Weather	18	11	19	48	0.9%
Wrong Way Driver	1	0	1	2	0.0%
Total	1,662	1,630	1,856	5,148	100.0%

Incidents by Detection Source



Notifier Agency	October	November	December	Total	%
Chattanooga Fire	0	0	1	1	0.0
Chattanooga Police	28	36	18	82	1.6
HELP Operator	362	346	352	1,060	20.6
TDOT Region 2 Maintenance	4	1	1	6	0.1
THP Dispatch	9	13	8	30	0.6
THP Local	2	127	170	299	5.8
TMC Operator	1,257	1,107	1,306	3,670	71.3
Total	1,662	1,630	1,856	5,148	100.0%

Percentage of Activity Types for HELP Truck Activities in Current Quarter



Activity Types for All Activities

	October	November	December	Total	%
Absorbent	6	33	13	52	0.8
Assist Maint	0	2	0	2	0.0
Assist THP	0	1	0	1	0.0
Blocked Ln/Traf Ctrl	976	1,065	1,123	3,164	46.5
Called Wrecker	2	0	0	2	0.0
Change Tire	106	95	97	298	4.4
Comment Card	1	3	1	5	0.1
Deploy Cones	1	0	0	1	0.0
Directions	437	443	477	1,357	20.0
First Aid	1	0	2	3	0.0
Fluids	13	7	10	30	0.4
Jump Start	33	23	36	92	1.4
Mechanical	51	29	45	125	1.8
No Service-Abandon	2	2	1	5	0.1
No Service-Occupied	22	9	5	36	0.5
Notified Law	2	0	0	2	0.0
Other	42	59	51	152	2.2
Phone Call	3	2	0	5	0.1
Relocate Vehicle	117	151	131	399	5.9
Remove Debris	108	142	135	385	5.7
Secure Load	5	3	9	17	0.3
Slow Roll	1	1	1	3	0.0
Supply Fuel	74	71	69	214	3.1
Tag Abandoned	120	124	101	345	5.1
Transported	4	3	3	10	0.1
Unable to Locate	2	3	3	8	0.1
Welfare Check	7	18	22	47	0.7
Wrong Truck	20	10	8	38	0.6
Total	2,156	2,299	2,343	6,798	100.0%

DMS Duration

	Oct	Nov	Dec	Quarter
Avg % ON Time	48.2	41.4	55.7	48.4
Avg Post Time (hr)	4.0	4.7	5.2	4.6
Avg Messages Per Sign	89.9	63.1	80.2	77.7
Total Messages Posted	3,686	2,588	3,288	9,562