



# I-55/75/26 Multimodal Corridor Study

I-155 Public Involvement Meeting. June 13, 2019





# Welcome & Agenda

1. Study Purpose
2. The Corridors
3. Study Schedule and Process
4. Anticipated Study Outcomes
5. Existing Conditions
6. Opportunities to Get Involved



# Study Purpose



U.S. Department of Transportation  
Federal Highway Administration



TDOT  
Department of  
Transportation



# Corridor planning

is a process that comprehensively

**assesses the ability of a transportation corridor to manage travel needs**

brought about by current development and anticipated growth

**over the next 20 years.**

The plan will:

- Evaluate existing and future conditions
- Identify potential improvements and management strategies

# The Corridors



## Study Corridors and Limits



<b>I-55</b>	<b>I-155</b>	<b>I-75</b>	<b>I-26</b>
<b>13 miles</b>	<b>16 miles</b>	<b>162 miles</b>	<b>54 miles</b>

Study website: [www.tn.gov/tdot/government/g/planning-studies/i-55-75-26-multimodal-corridor-study.html](http://www.tn.gov/tdot/government/g/planning-studies/i-55-75-26-multimodal-corridor-study.html)

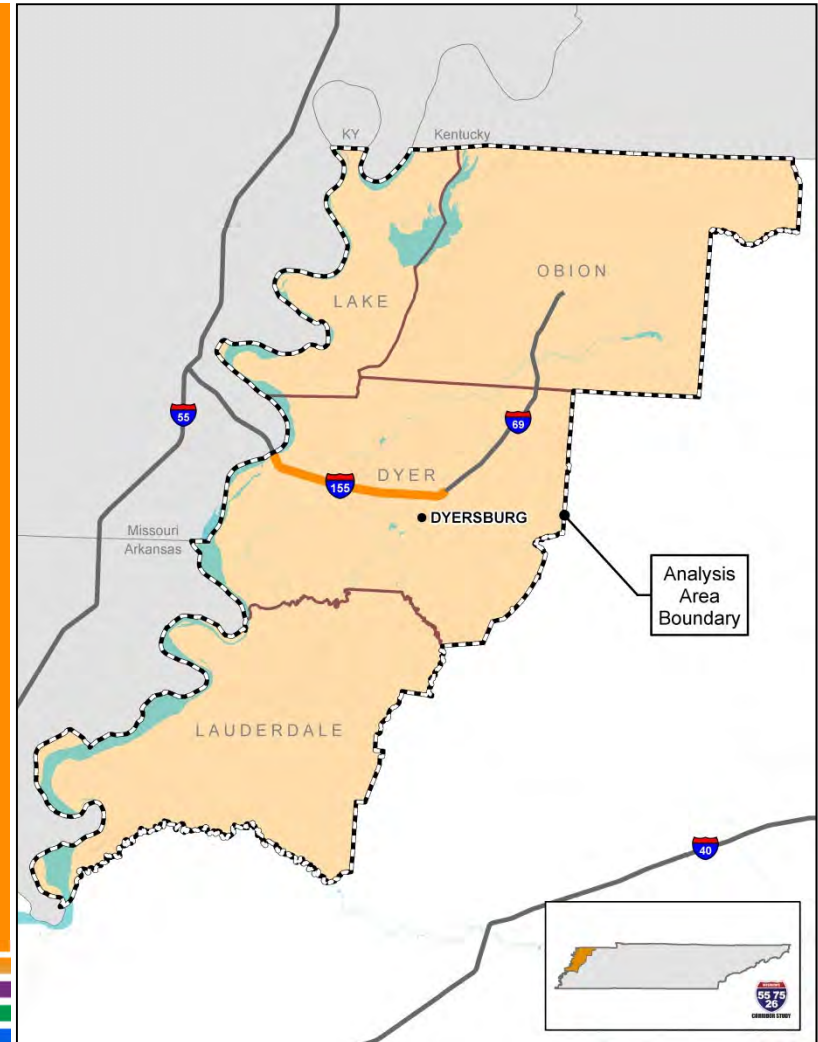


# I-155

Begin: Missouri State Line  
End: Dyersburg

16 miles

Counties: Dyer, Lake, Lauderdale, Obion



# Study Schedule and Process



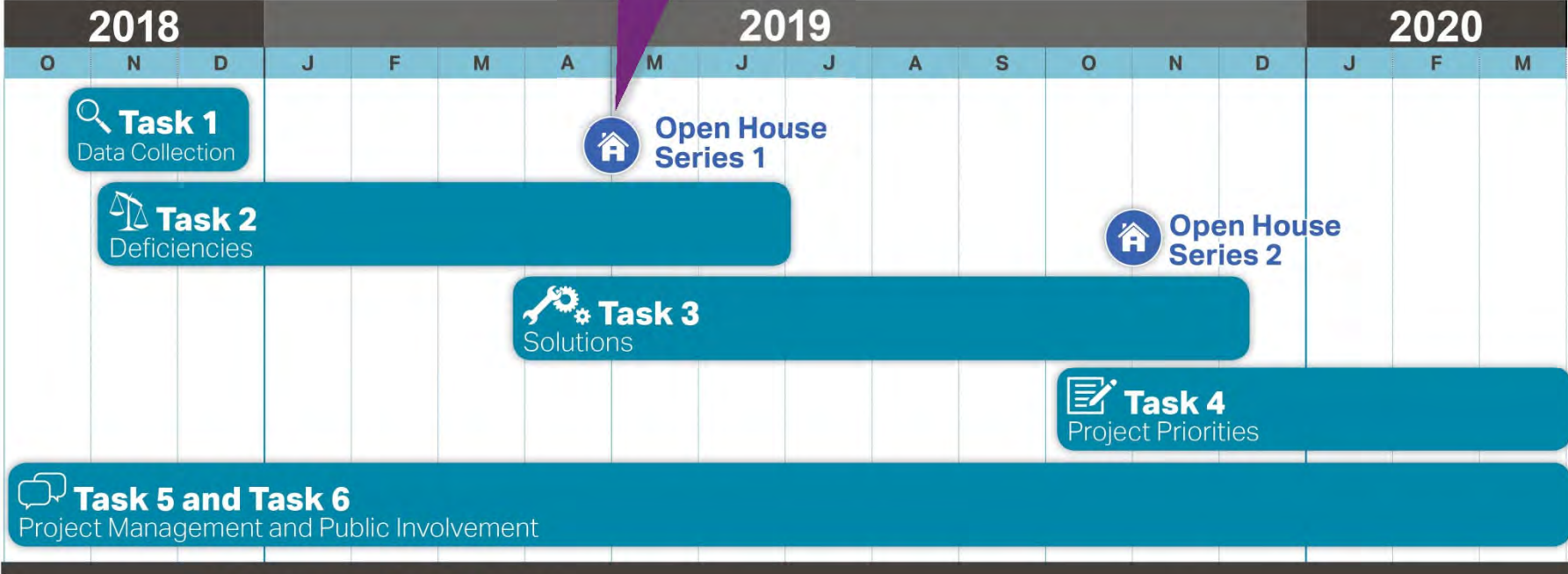
U.S. Department of Transportation  
Federal Highway Administration





# Study Schedule

We are here!



**Advisory Committee Meetings**



Kick-Off Meeting

Potential Solutions

Recommended Solutions / Prioritization



## Anticipated Study Outcomes

1

Existing and future multimodal corridor deficiencies



2

Goals, objectives, and performance measures by corridor



3

Feasible multimodal solutions examining each focus area

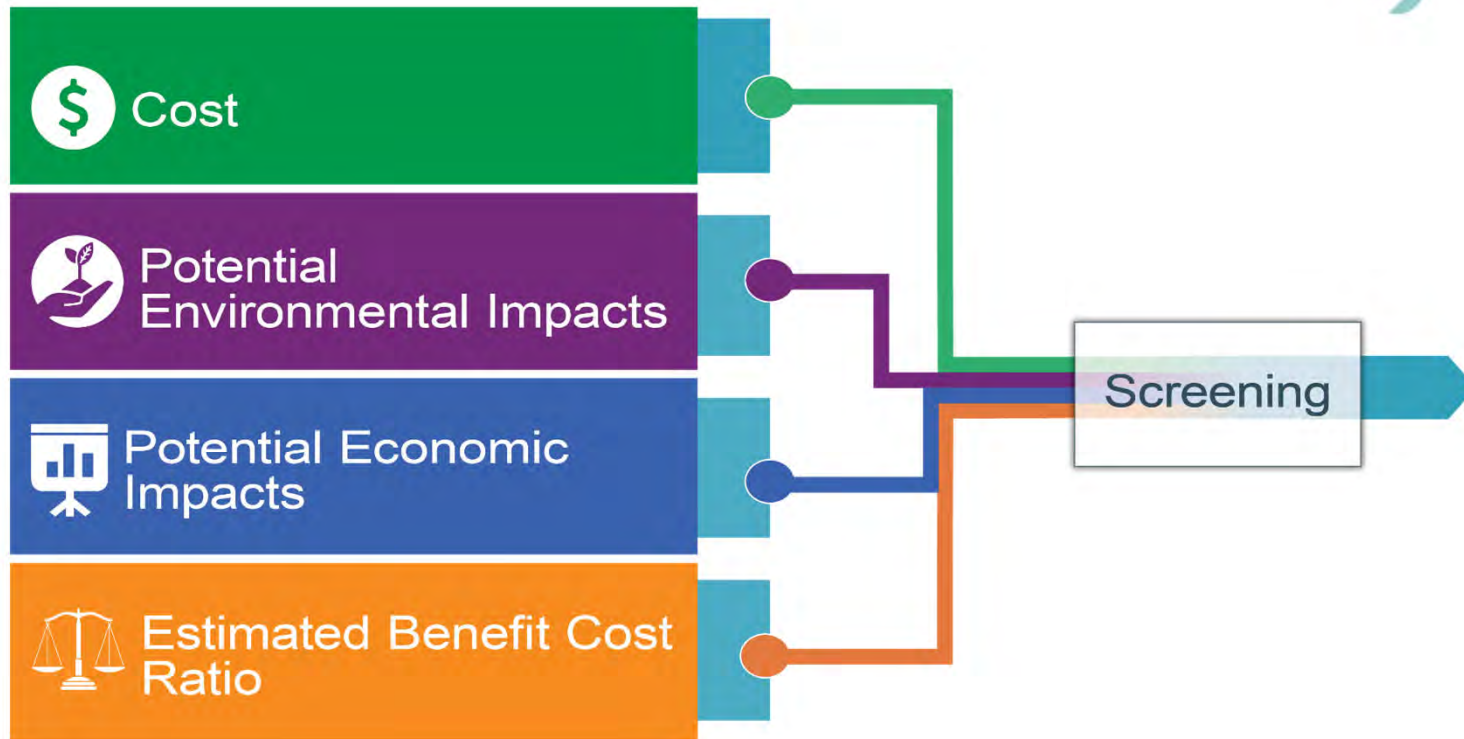


4

Prioritize projects



# Prioritization Process Details



# Existing Conditions

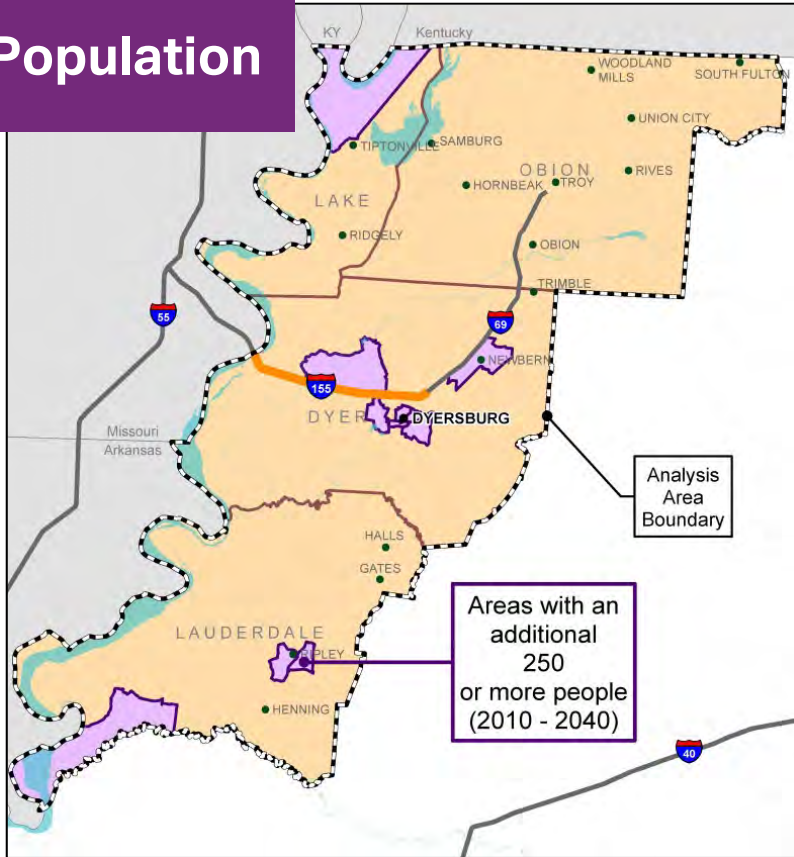


U.S. Department of Transportation  
Federal Highway Administration

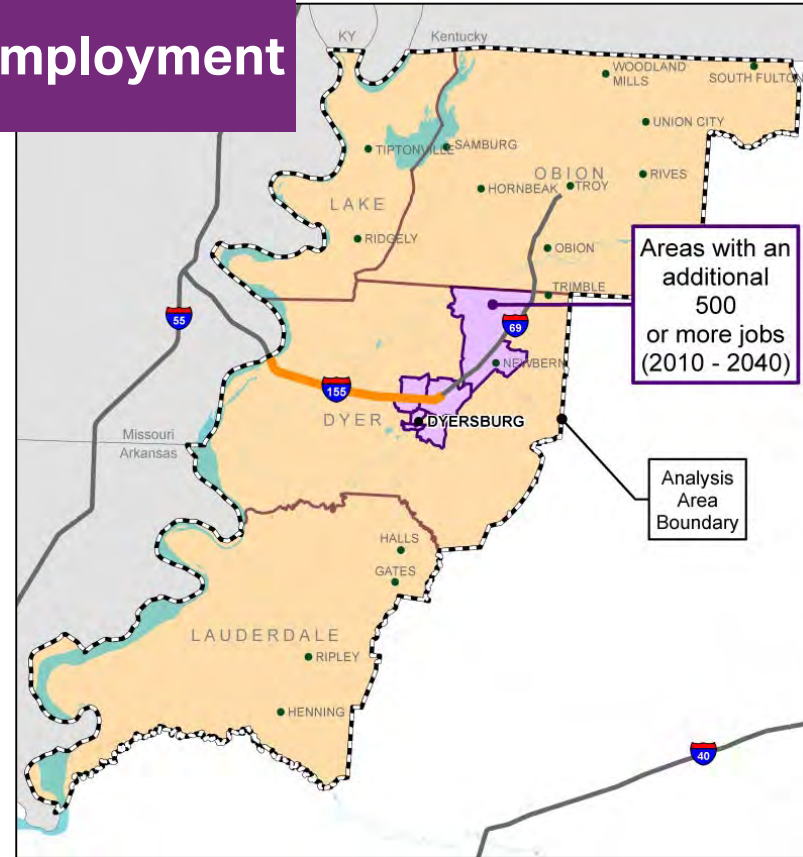


# Existing Conditions: Population and Employment

## Population



## Employment

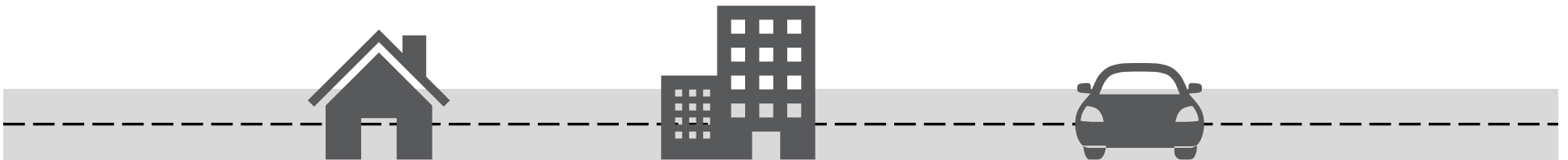


## Existing Conditions: Population and Employment

Visit **Station 1** tonight for more information about:

- Population and employment growth along the I-155 corridor
- Presence of minority and low income populations

**Tell us where YOU live, work and travel.  
How do YOU use I-155?**



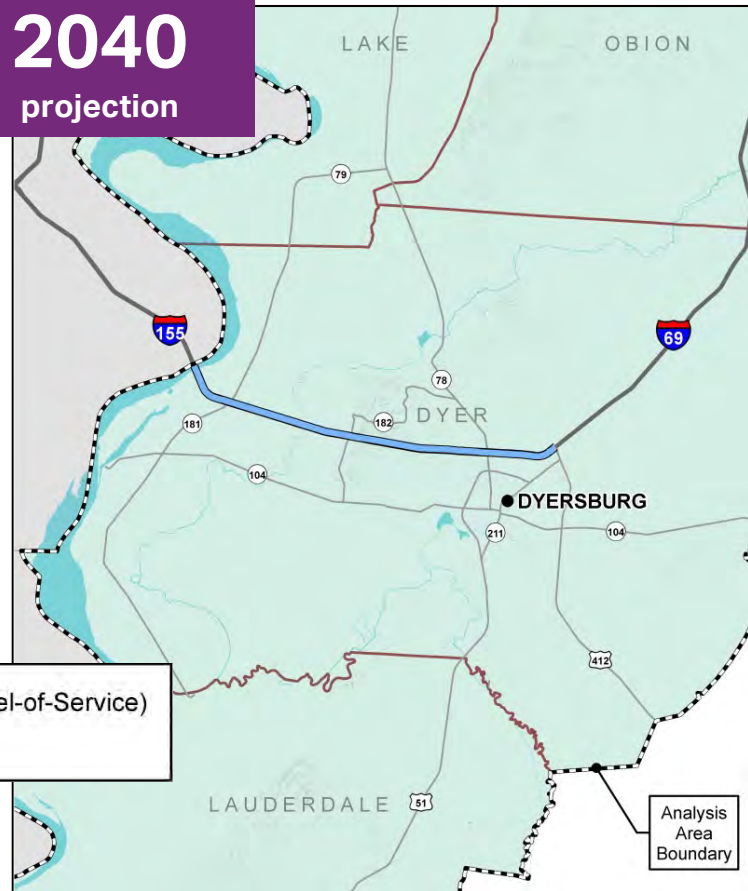


# Existing Conditions: Traffic Congestion

2010



2040  
projection



Volume/Capacity (Level-of-Service)  
0.00 - LOS A

Analysis Area Boundary

Analysis Area Boundary



## Existing Conditions: Safety

How do corridor crash rates compare to statewide averages for similar facilities?

17% of corridor Below Average

2% of corridor Average

36% of corridor Above Average

45% of corridor Significantly Above Average

2014 – 2018

Crash Rates



## Existing Conditions: Traffic Congestion + Safety

Visit **Station 2** tonight for more information about:

- Traffic volumes and congestion
- Safety

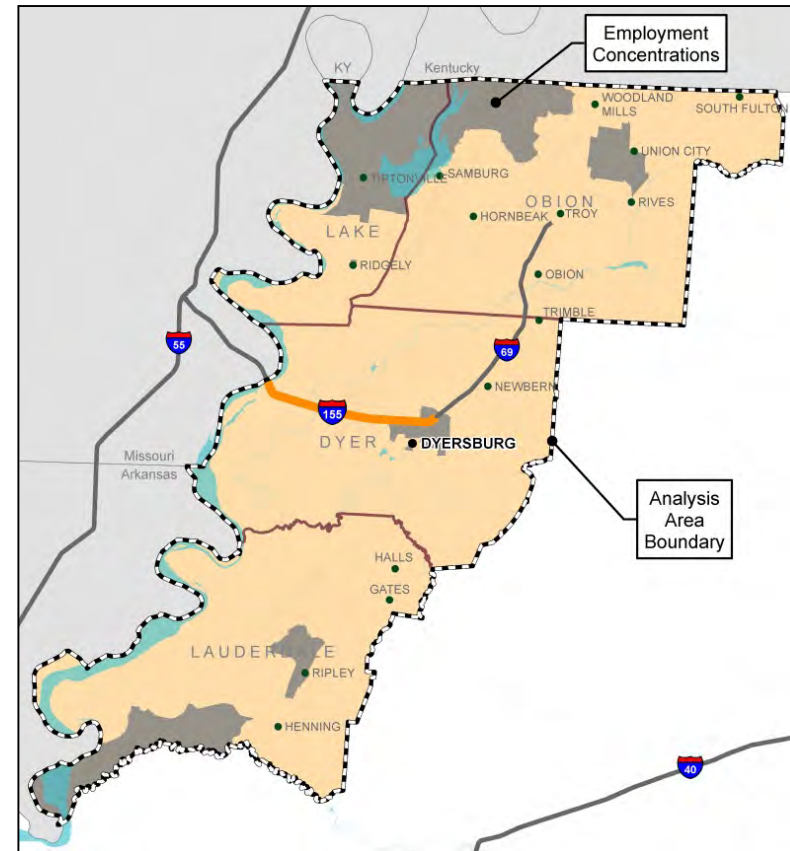
**Put a sticker on the map to tell us where  
YOU experience travel delay  
or safety problems.**

## Existing Conditions: Multimodal Connections

There is no fixed-route transit service in or around Dyersburg.

The Northwest Tennessee Human Resource Agency (NWTHTRA) offers on-demand service in Lake, Obion and Dyer counties in the study area.

- This map shows areas of employment concentration.



## Existing Conditions: Multimodal Connections

Visit **Station 3** tonight for more information about:

- Transit coverage areas
- Park and ride locations
- Car and van pool
- State bicycle routes

**Indicate YOUR desired multimodal connections in the corridor.**

# Opportunities to Get Involved



U.S. Department of Transportation  
Federal Highway Administration







# Opportunities to Get Involved



**AECOM**



Website	Online Survey	Interactive Map (Under Construction)	Public Meetings



## How to Share Your Input Today

**Talk to the court  
reporter**

**Complete the online  
survey**

**Speak with a member  
of the study team**

**Fill out a comment  
sheet**

# Thank You!

**Study website:**

<https://www.tn.gov/tdot/government/g/planning-studies/i-55-75-26-multimodal-corridor-study.html>



U.S. Department of Transportation  
Federal Highway Administration

