



I-55/75/26 Multimodal Corridor Study

Public Involvement Meeting. April 25, 2019





Welcome & Agenda

1. Study Purpose
2. The Corridors
3. Study Schedule and Process
4. Anticipated Study Outcomes
5. Existing Conditions
6. Opportunities to Get Involved



Study Purpose



U.S. Department of Transportation
Federal Highway Administration



Corridor planning

is a process that comprehensively

assesses the ability of a transportation corridor to manage travel needs

brought about by current development and anticipated growth

over the next 20 years.

The plan will:

- Evaluate existing and future conditions
- Identify potential improvements and management strategies

The Corridors



U.S. Department of Transportation
Federal Highway Administration



Study Corridors and Limits



I-55	I-155	I-75	I-26
13 miles	16 miles	162 miles	54 miles

Study website: www.tn.gov/tdot/government/g/planning-studies/i-55-75-26-multimodal-corridor-study.html

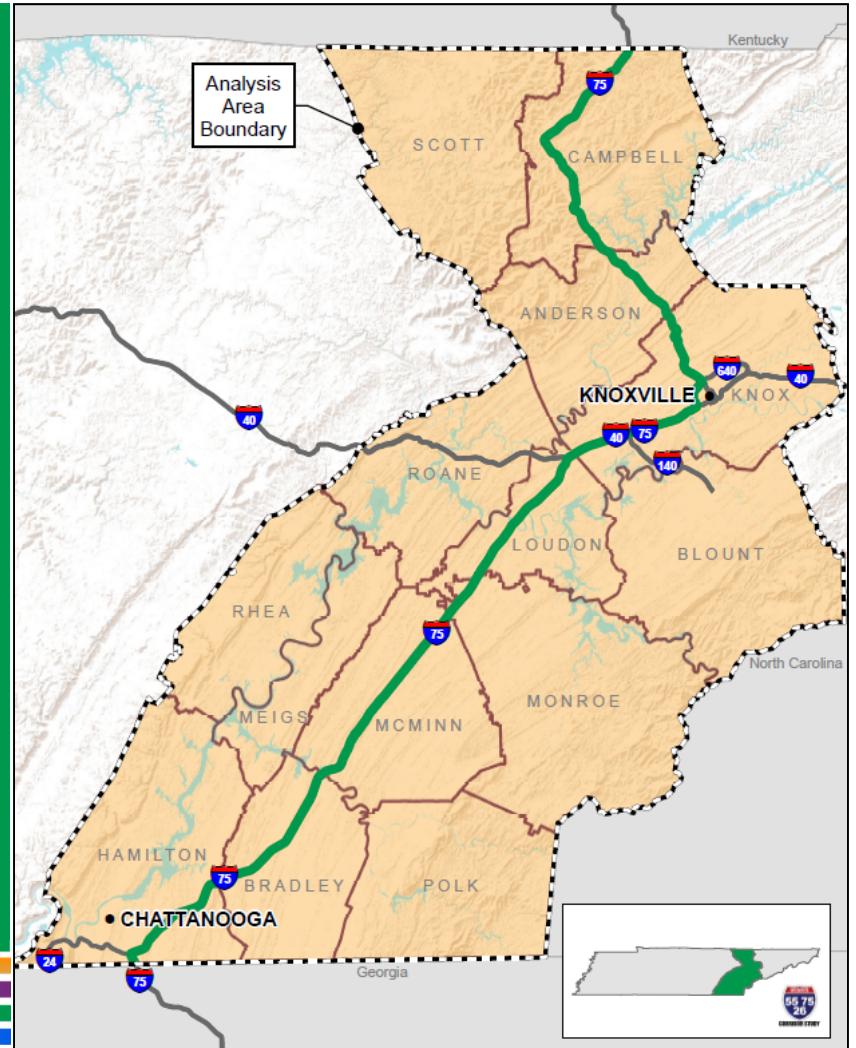


I-75

Begin: Kentucky State Line
End: Georgia State Line

162 miles

Counties: Anderson, Blount, Bradley, Campbell, Hamilton, Knox, Loudon, McMinn, Meigs, Monroe, Polk, Rhea, Roane, Scott



Study Schedule and Process

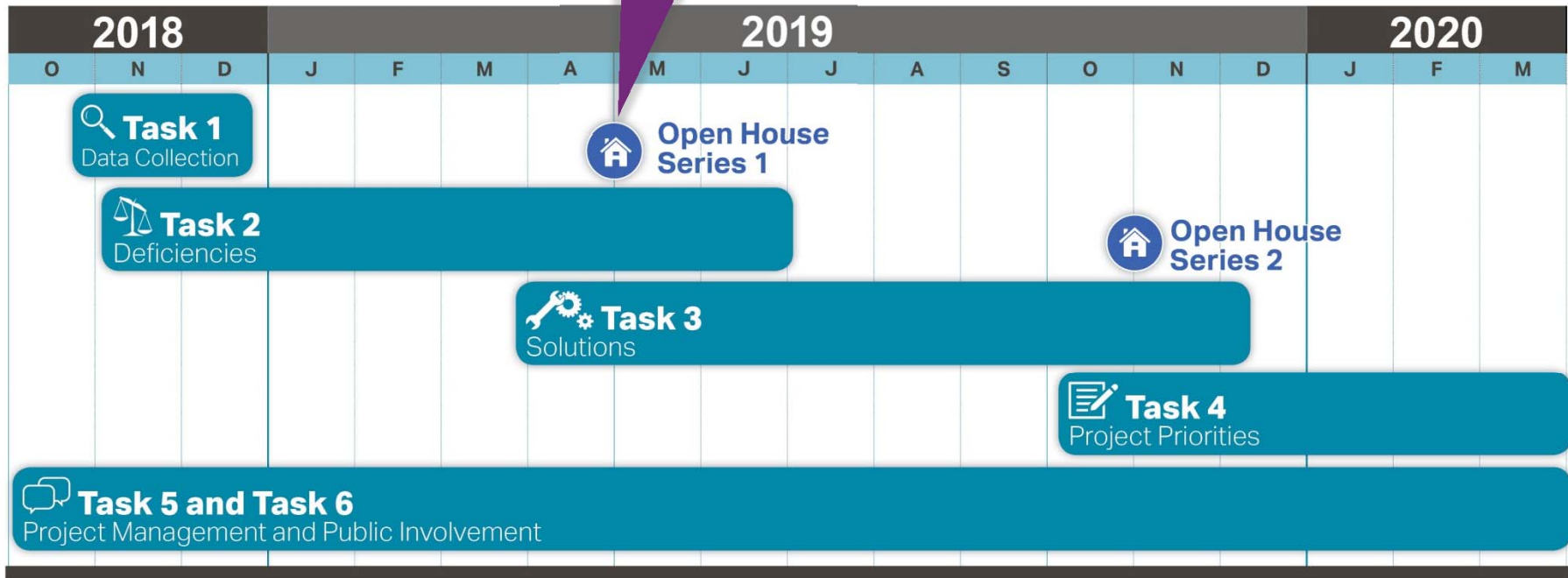


U.S. Department of Transportation
Federal Highway Administration



Study Schedule

We are here!



Advisory Committee Meetings



Anticipated Study Outcomes

1

Existing and future multimodal corridor deficiencies




2

Goals, objectives, and performance measures by corridor



3

Feasible multimodal solutions examining each focus area

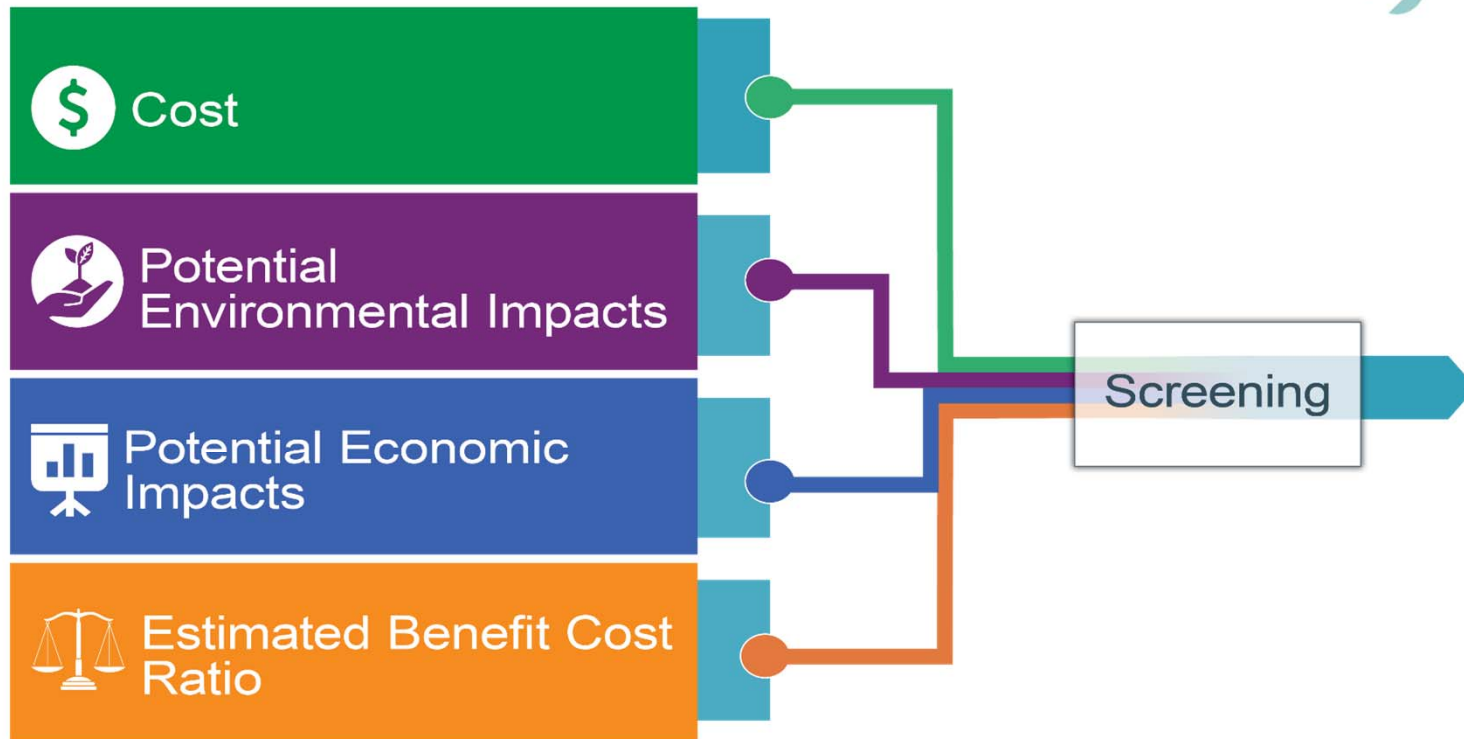


4

Prioritize projects



Prioritization Process Details



Existing Conditions



U.S. Department of Transportation
Federal Highway Administration

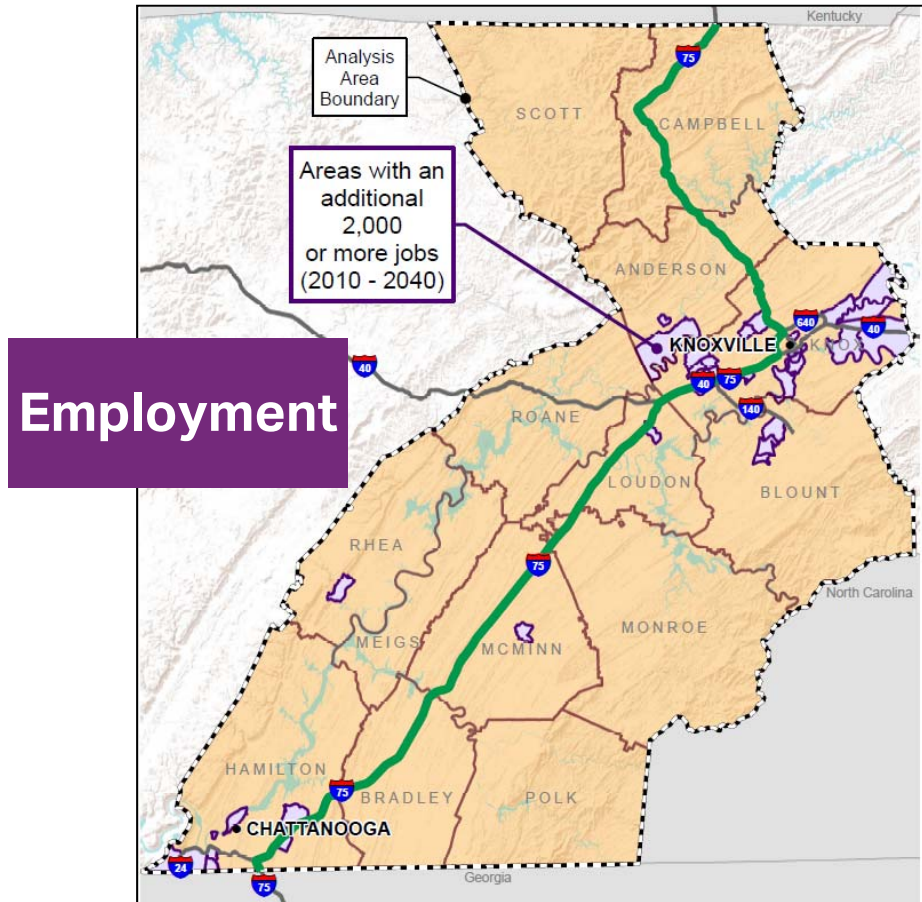
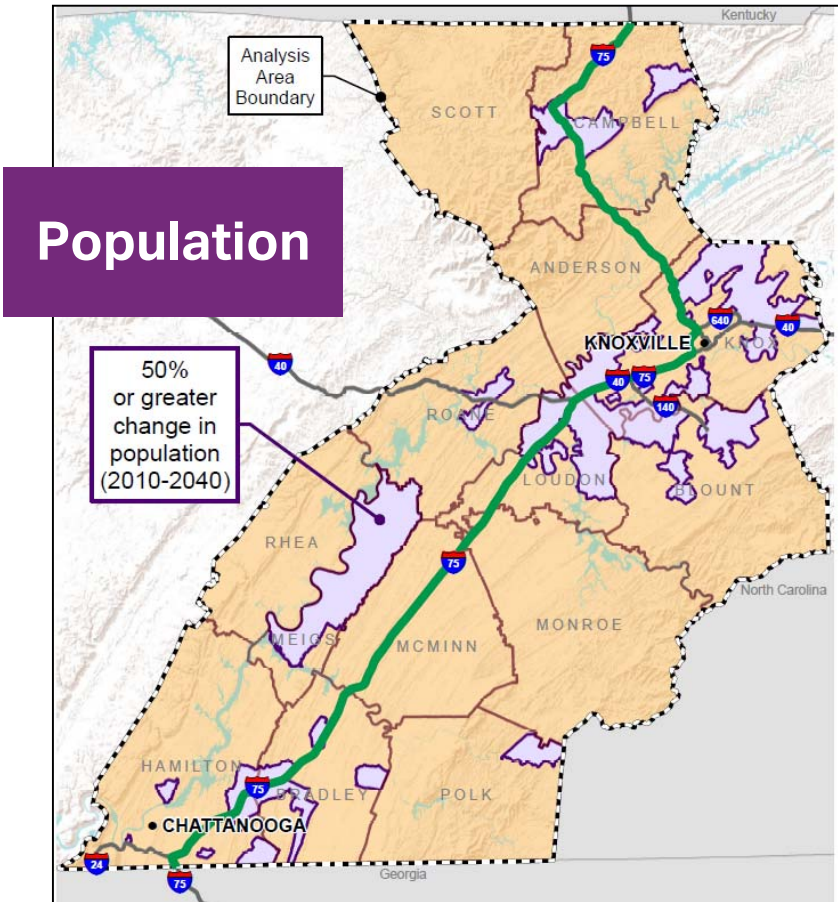


TDOT
Department of
Transportation



CORRIDOR STUDY

Existing Conditions: Population and Employment

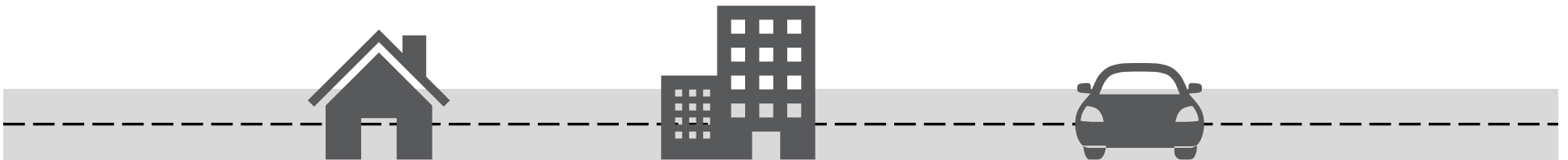


Existing Conditions: Population and Employment

Visit **Station 1** tonight for more information about:

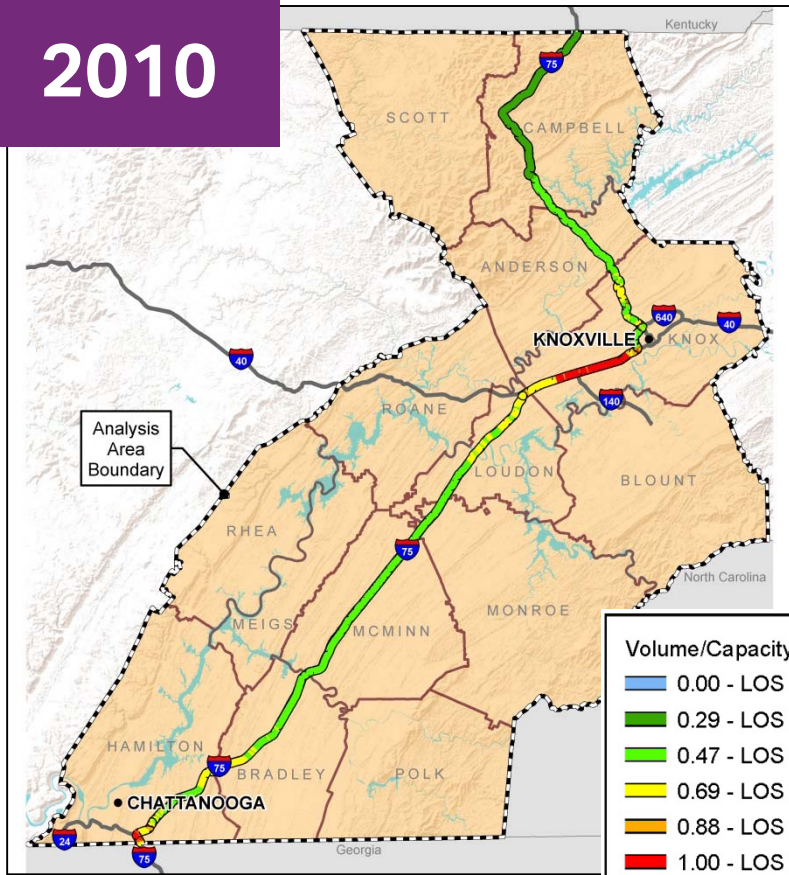
- Population and employment growth along the I-75 corridor
- Presence of minority and low income populations

**Tell us where YOU live, work and travel.
How do YOU use I-75?**

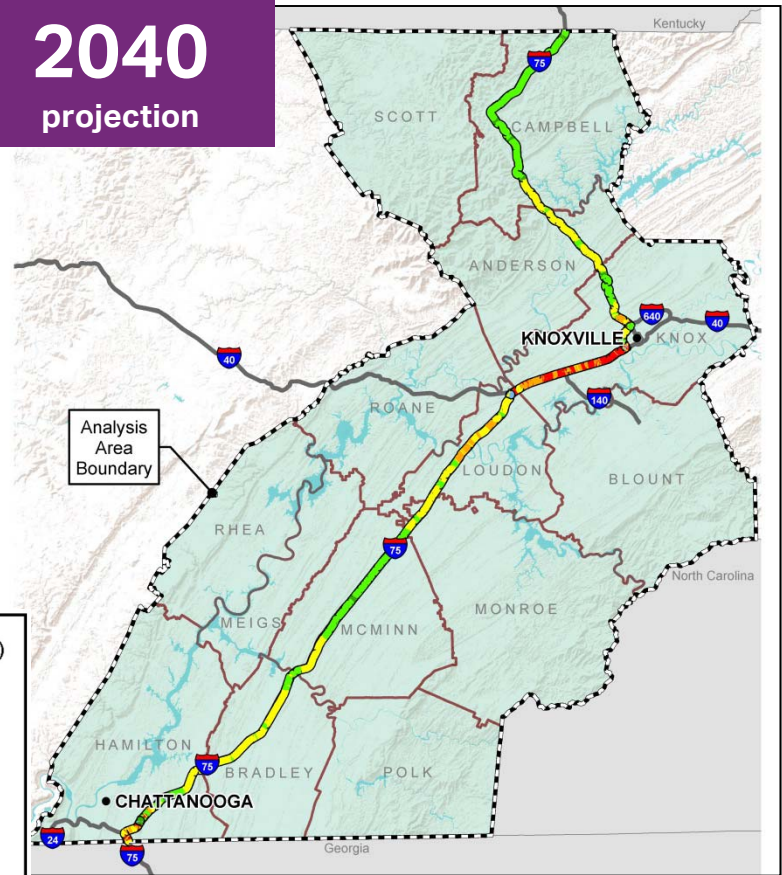


Existing Conditions: Traffic Congestion

2010



2040 projection



Volume/Capacity (Level-of-Service)

Blue	0.00 - LOS A
Green	0.29 - LOS B
Light Green	0.47 - LOS C
Yellow	0.69 - LOS D
Orange	0.88 - LOS E
Red	1.00 - LOS F



Existing Conditions: Safety

How do corridor crash rates compare to statewide averages for similar facilities?

11% of corridor Below Average

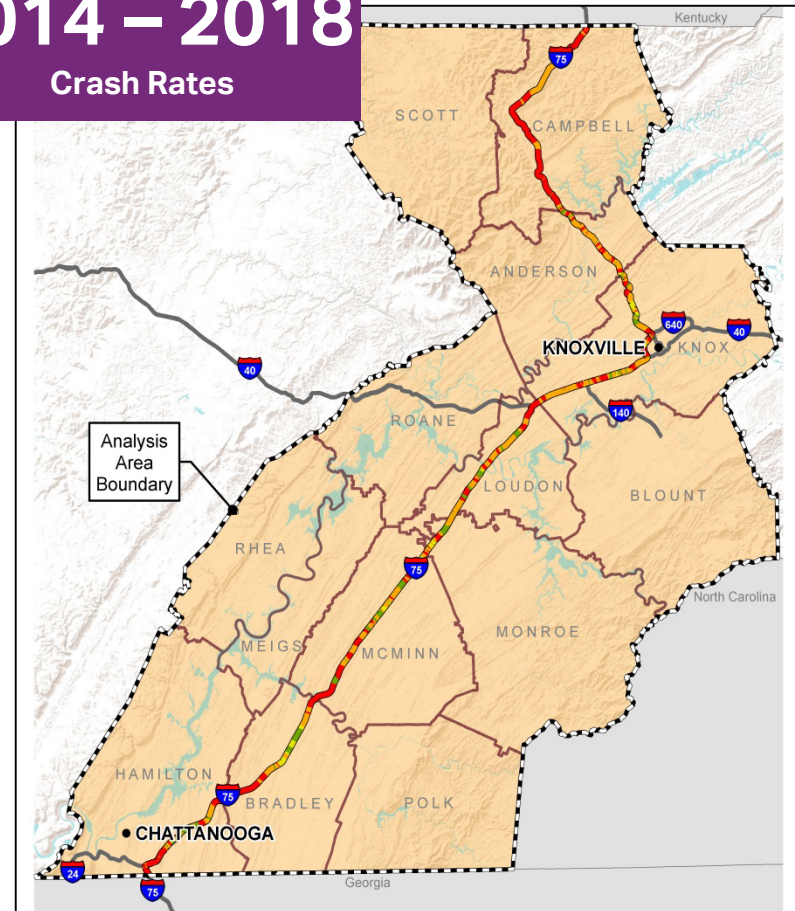
5% of corridor Average

41% of corridor Above Average

43% of corridor Significantly Above Average

2014 – 2018

Crash Rates



Existing Conditions: Traffic Congestion + Safety

Visit **Station 2** tonight for more information about:

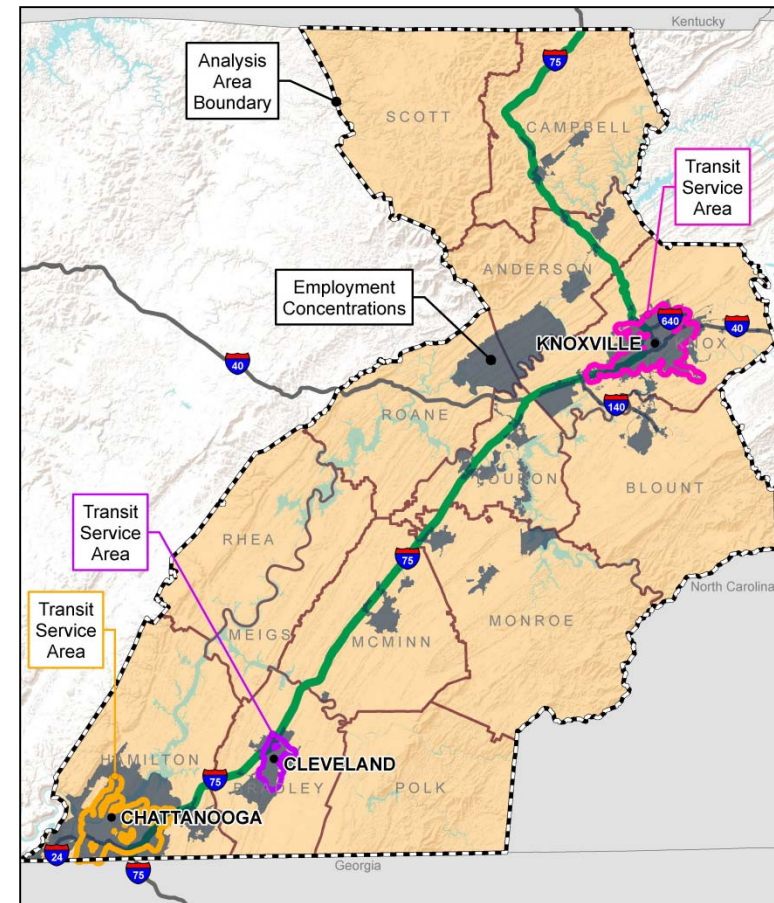
- Traffic volumes and congestion
- Safety

**Put a sticker on the map to tell us where
YOU experience travel delay.**

Existing Conditions: Multimodal Connections

Transit service exists in **Knoxville**, **Chattanooga** and **Cleveland**.

- This map shows transit service areas and how they relate to areas of employment concentration.



Existing Conditions: Multimodal Connections

Visit **Station 3** tonight for more information about:

- Transit coverage areas
- Park and ride locations
- Car and van pool
- State bicycle routes

Indicate YOUR desired multimodal connections in the corridor.

Opportunities to Get Involved



U.S. Department of Transportation
Federal Highway Administration





Opportunities to Get Involved



AECOM



Website	Online Survey	Interactive Map	Public Meetings



How to Share Your Input Today

**Talk to the court
reporter**

**Complete the online
survey**

**Speak with a member
of the study team**

**Fill out a comment
sheet**

Thank You!

Study website:

<https://www.tn.gov/tdot/government/g/planning-studies/i-55-75-26-multimodal-corridor-study.html>



U.S. Department of Transportation
Federal Highway Administration

