

**CC Traffic Stations**

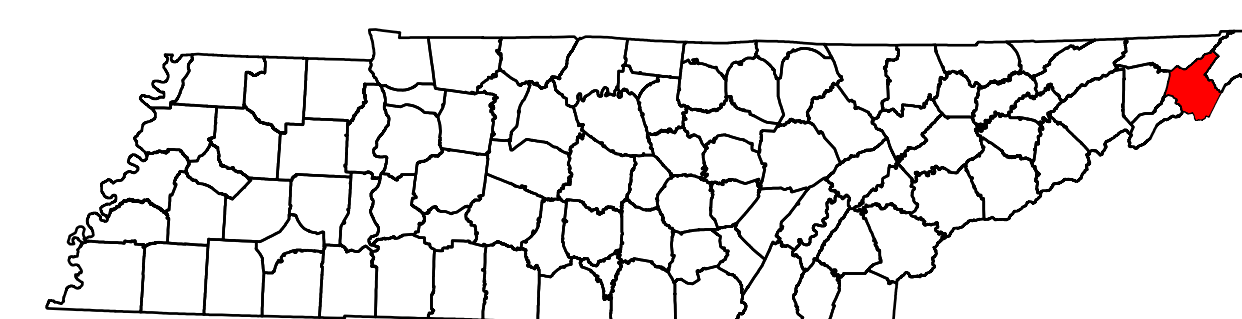
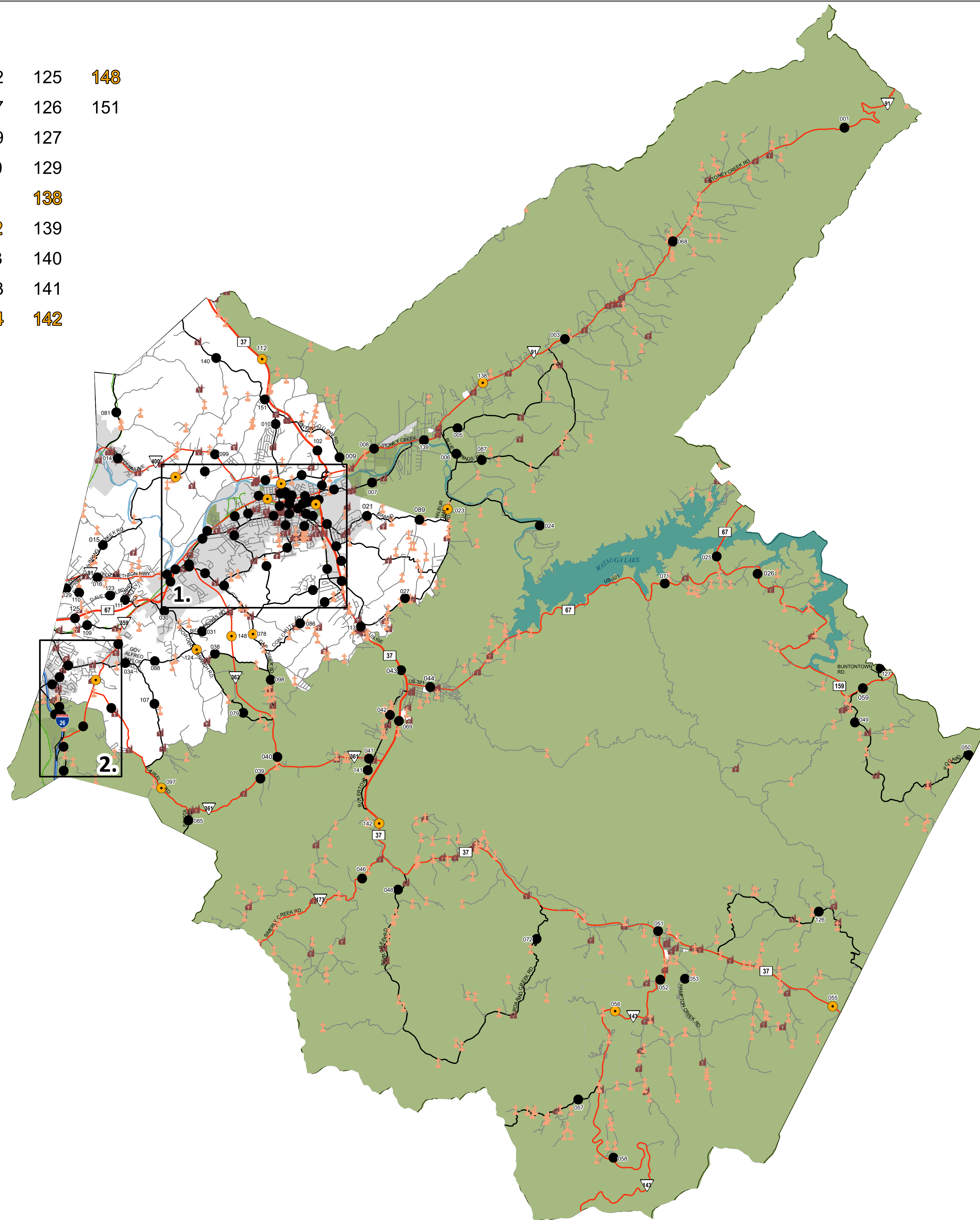
001	015	031	046	057	081	102	125	<b>148</b>
003	016	034	048	058	085	107	126	151
005	021	038	049	059	086	109	127	
006	<b>023</b>	039	050	068	087	110	129	
007	024	040	051	069	088	111	<b>138</b>	
008	025	041	052	071	089	<b>112</b>	139	
009	026	042	053	072	<b>097</b>	113	140	
010	027	043	<b>055</b>	<b>078</b>	098	123	141	
014	030	044	<b>056</b>	079	099	<b>124</b>	<b>142</b>	

**Insets**

- 1. Elizabethton
- 2. Johnson City

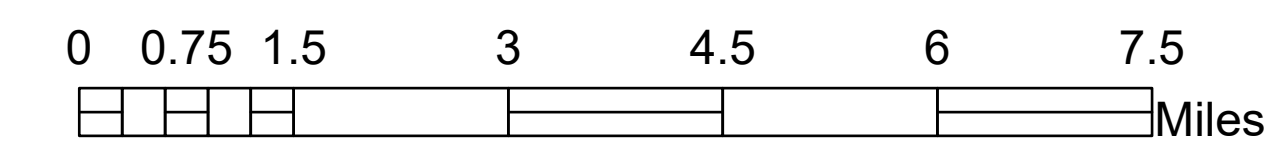
**Legend**

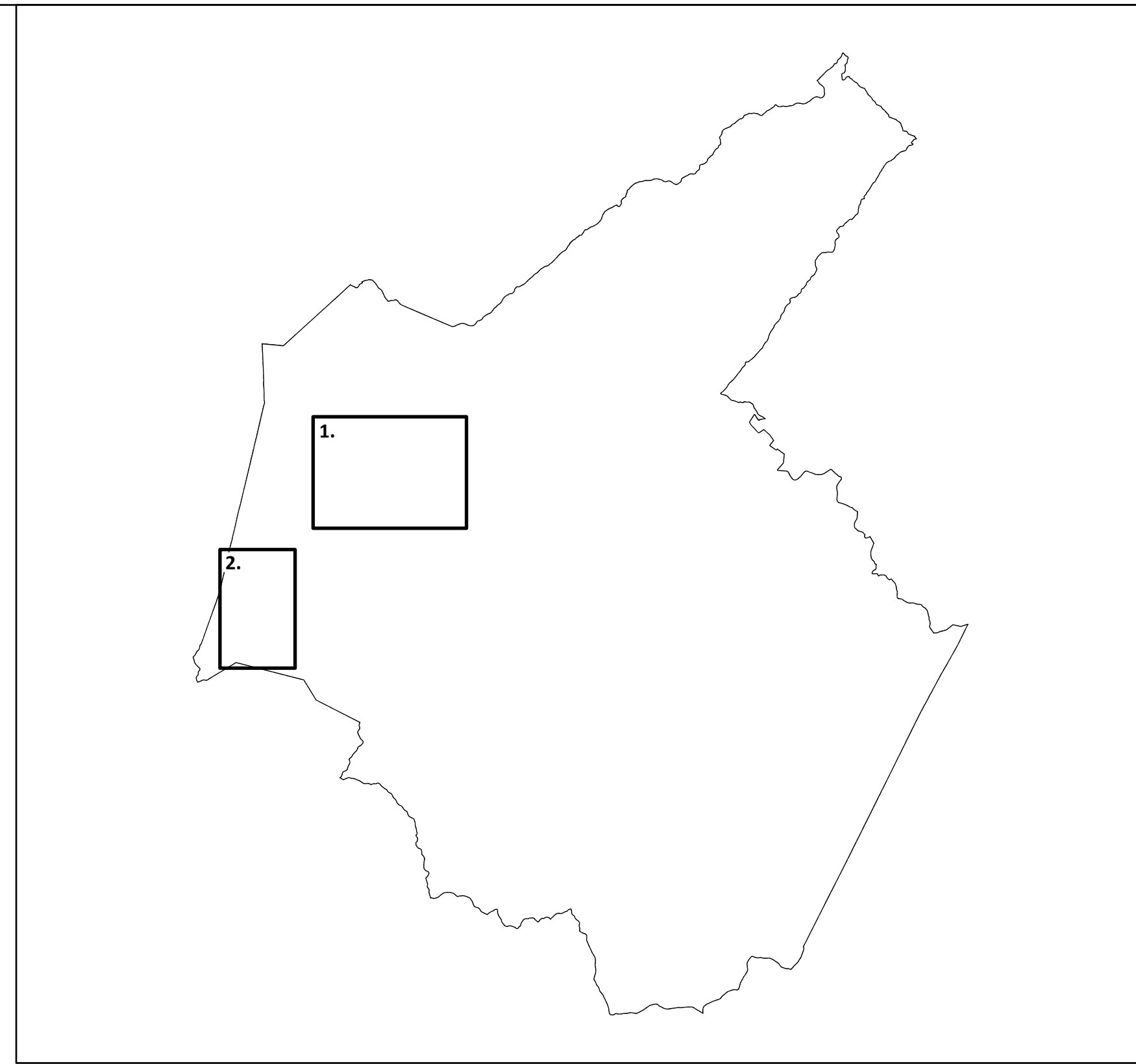
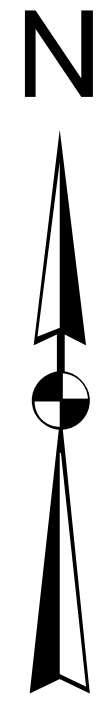
- HPMS Traffic Stations
- Class Count Traffic Stations
- CC Traffic Stations
- ATR Traffic Stations
- EDL Traffic Stations
- Churches
- Cemeteries
- HPMS Route
- Interstate
- State Route
- Functional Route
- Local Route
- Railroads
- Major Waterways
- Parks
- Municipal Boundary



**2023 Traffic Map  
Carter County  
Tennessee**

Prepared by the  
Tennessee Department of Transportation  
Long Range Planning Division  
Office of Data Visualization



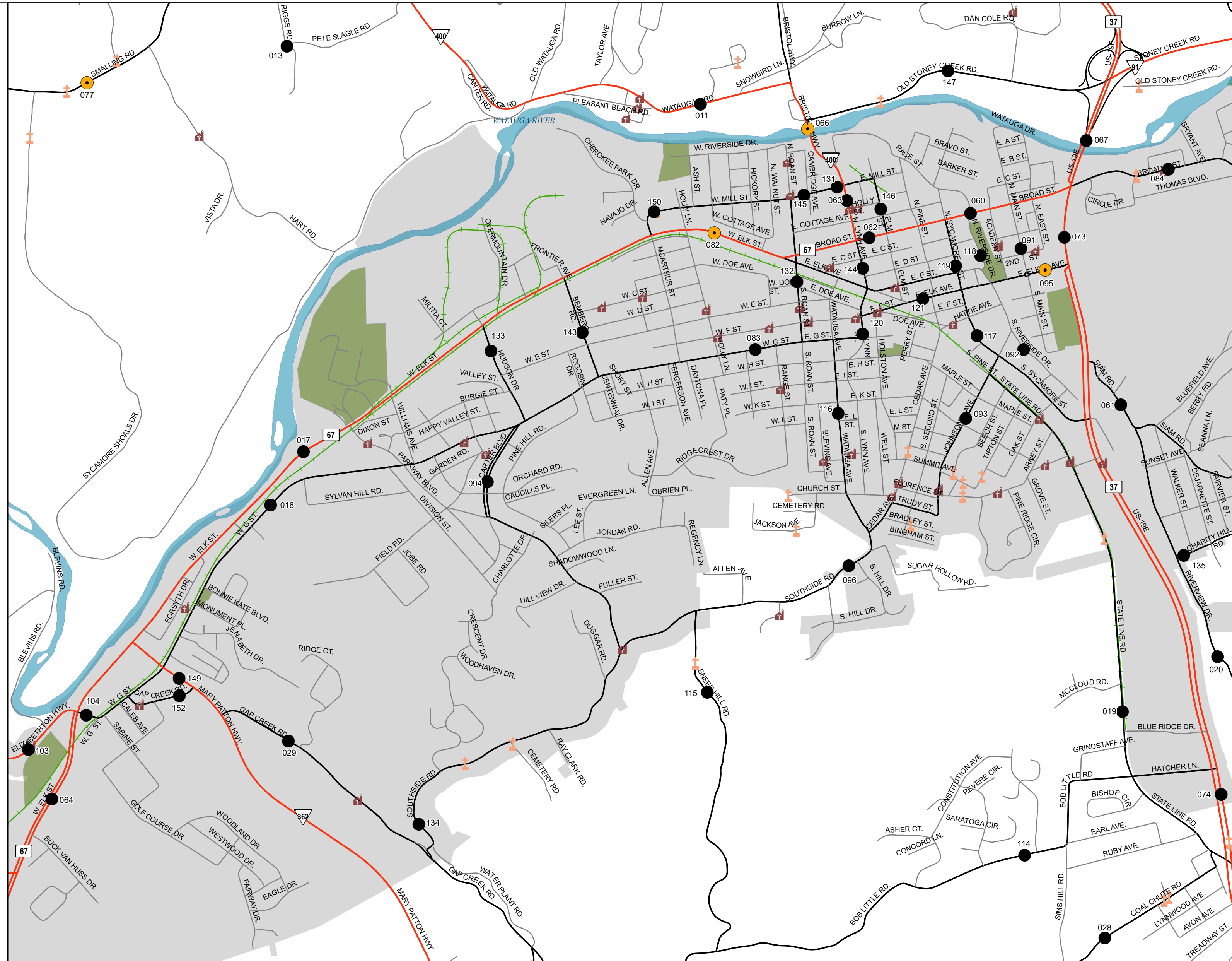


Insets  
1. Elizabethton  
2. Johnson City

### 1. Elizabethton

#### CC Traffic Stations

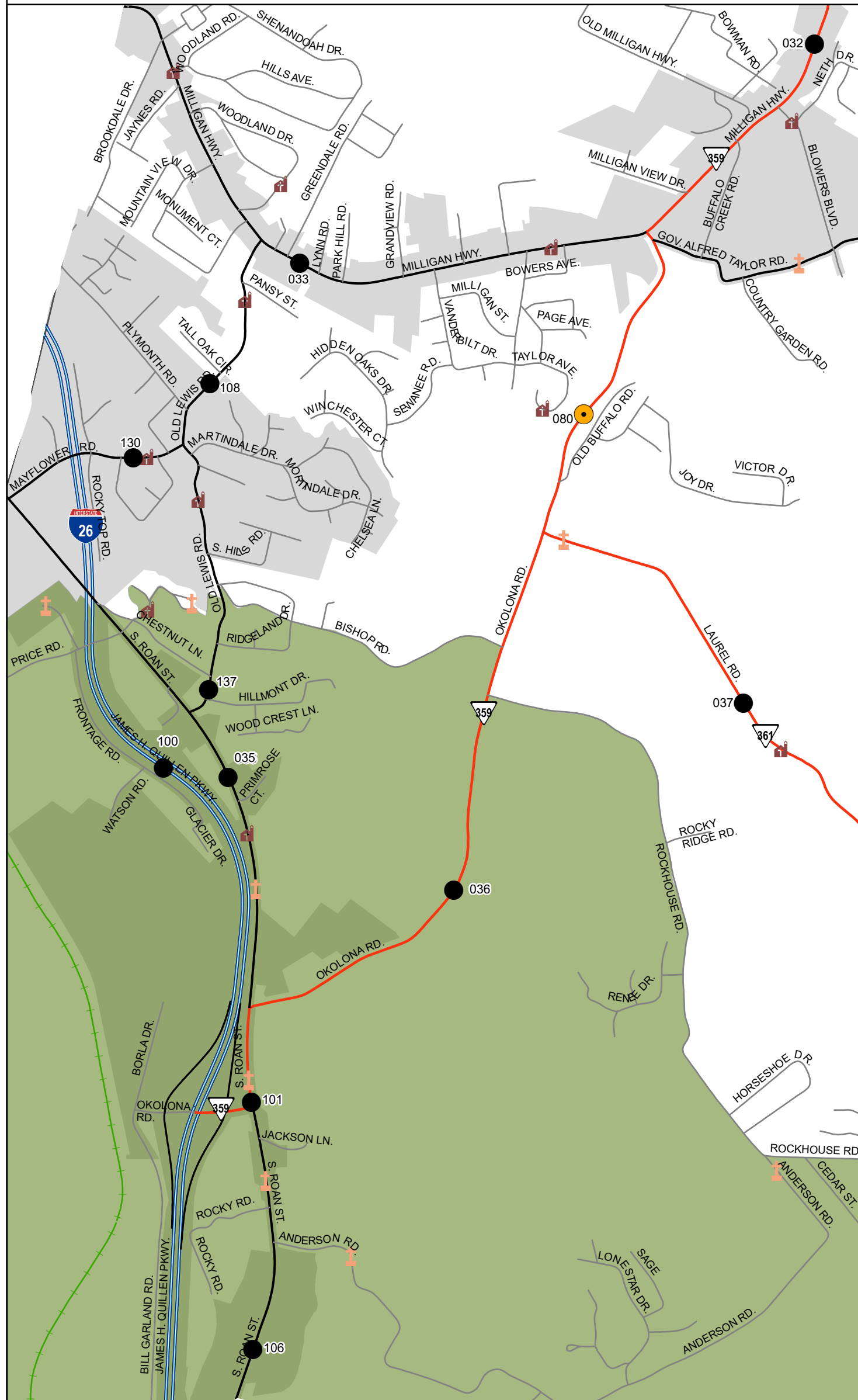
011	066	096	132
013	067	103	133
017	073	104	134
018	074	114	135
019	077	115	143
020	082	116	144
028	083	117	145
029	084	118	146
060	091	119	147
061	092	120	149
062	093	121	150
063	094	131	152
064	095		



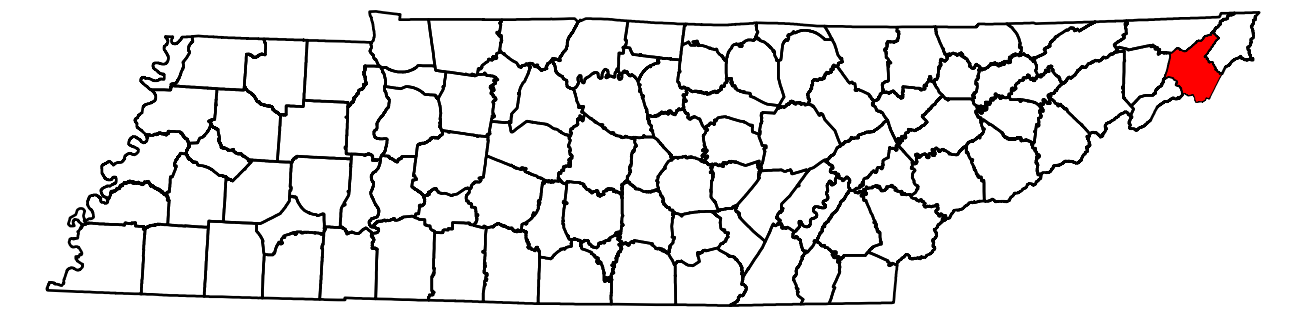
### 2. Johnson City

#### CC Traffic Stations

032	037	106
033	080	108
035	100	130
036	101	137



- #### Legend
- HPMS Traffic Stations
  - Class Count Traffic Stations
  - CC Traffic Stations
  - ATR Traffic Stations
  - EDL Traffic Stations
  - Churches
  - Cemeteries
  - HPMS Route
  - Interstate
  - State Route
  - Functional Route
  - Local Route
  - Railroads
  - Major Waterways
  - Parks
  - Municipal Boundary



2023 Traffic Map  
**Carter County**  
Tennessee  
Prepared by the  
Tennessee Department of Transportation  
Long Range Planning Division  
Office of Data Visualization

