

N



Insets
1. Newport

CC Traffic Stations

- 001 015 037 052 074 **096**
- 002 **018 038** 053 084 097
- 003 **019 040 054** 085 099
- 005 **020** 041 057 086 113
- 006 021 **042** 058 088 114
- 007 023 043 061 089 120
- 008 032 045 062 091 127
- 012 **033** 047 063 092 130
- 013** 035 048 **064** 095
- 014 036 051 071

EDL Traffic Stations

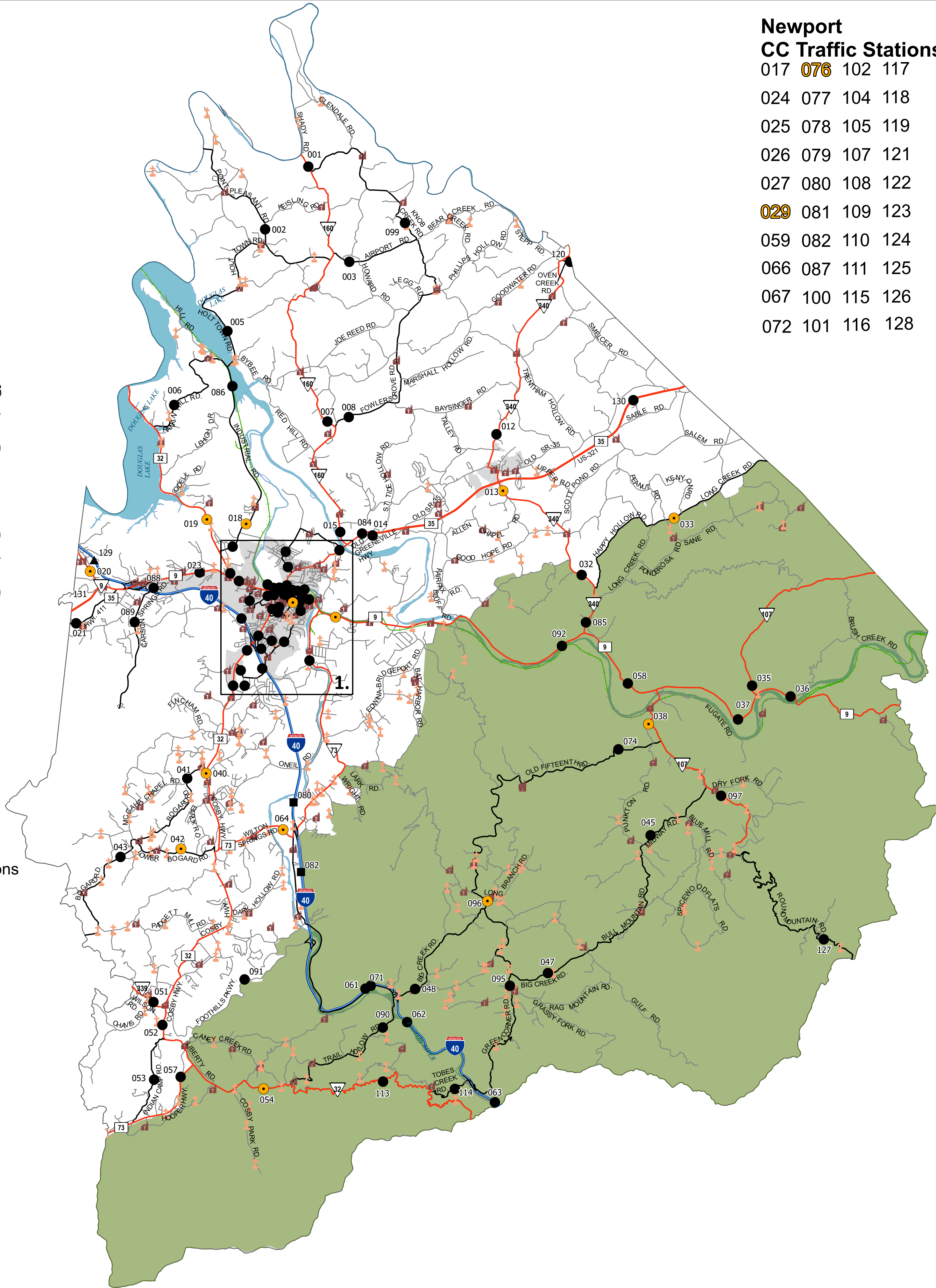
- 129

ATR Traffic Stations

- 082 090

Legend

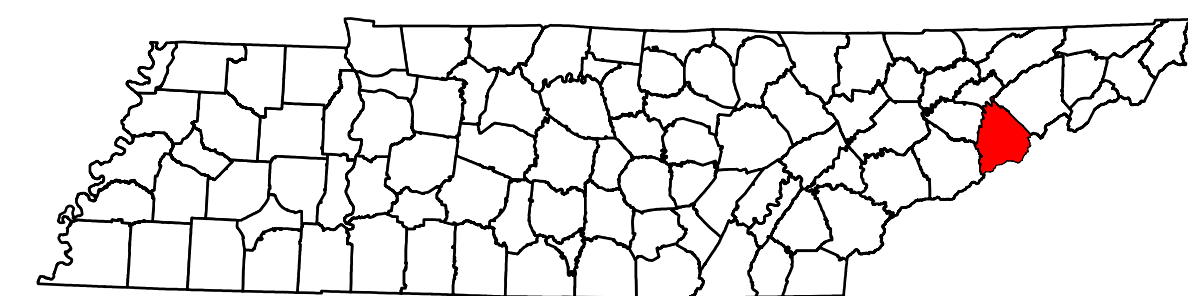
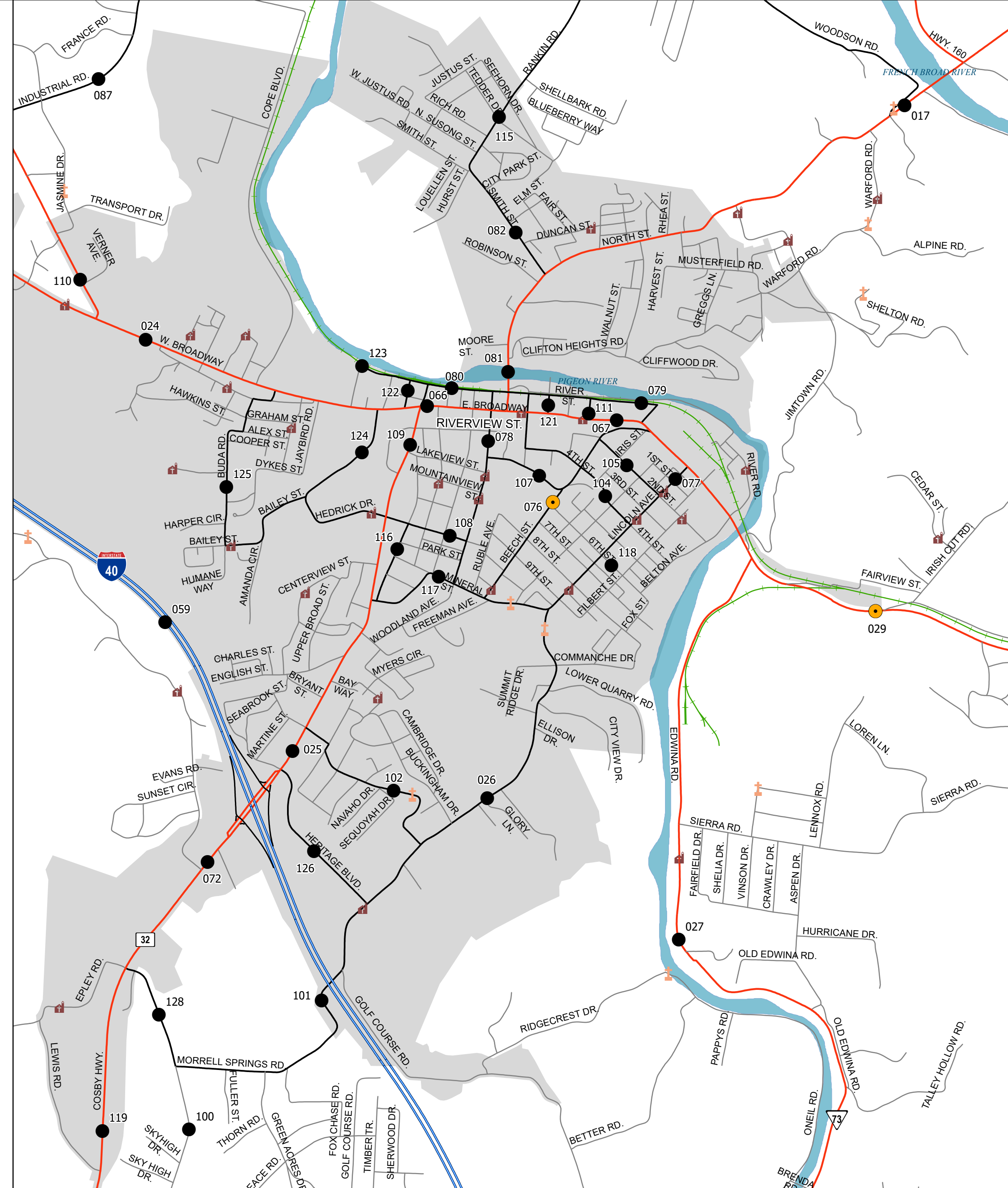
- HPMS Traffic Stations
- Class Count Traffic Stations
- CC Traffic Stations
- ATR Traffic Stations
- EDL Traffic Stations
- Churches
- Cemeteries
- HPMS Route
- Interstate
- State Route
- Functional Route
- Local Route
- Railroads
- Major Waterways
- Parks
- Municipal Boundary



**Newport
CC Traffic Stations**

- 017 **076** 102 117
- 024 077 104 118
- 025 078 105 119
- 026 079 107 121
- 027 080 108 122
- 029** 081 109 123
- 059 082 110 124
- 066 087 111 125
- 067 100 115 126
- 072 101 116 128

1.



**2023 Traffic Map
Cocke County
Tennessee**

Prepared by the
Tennessee Department of Transportation
Long Range Planning Division
Office of Data Visualization

