

507SW

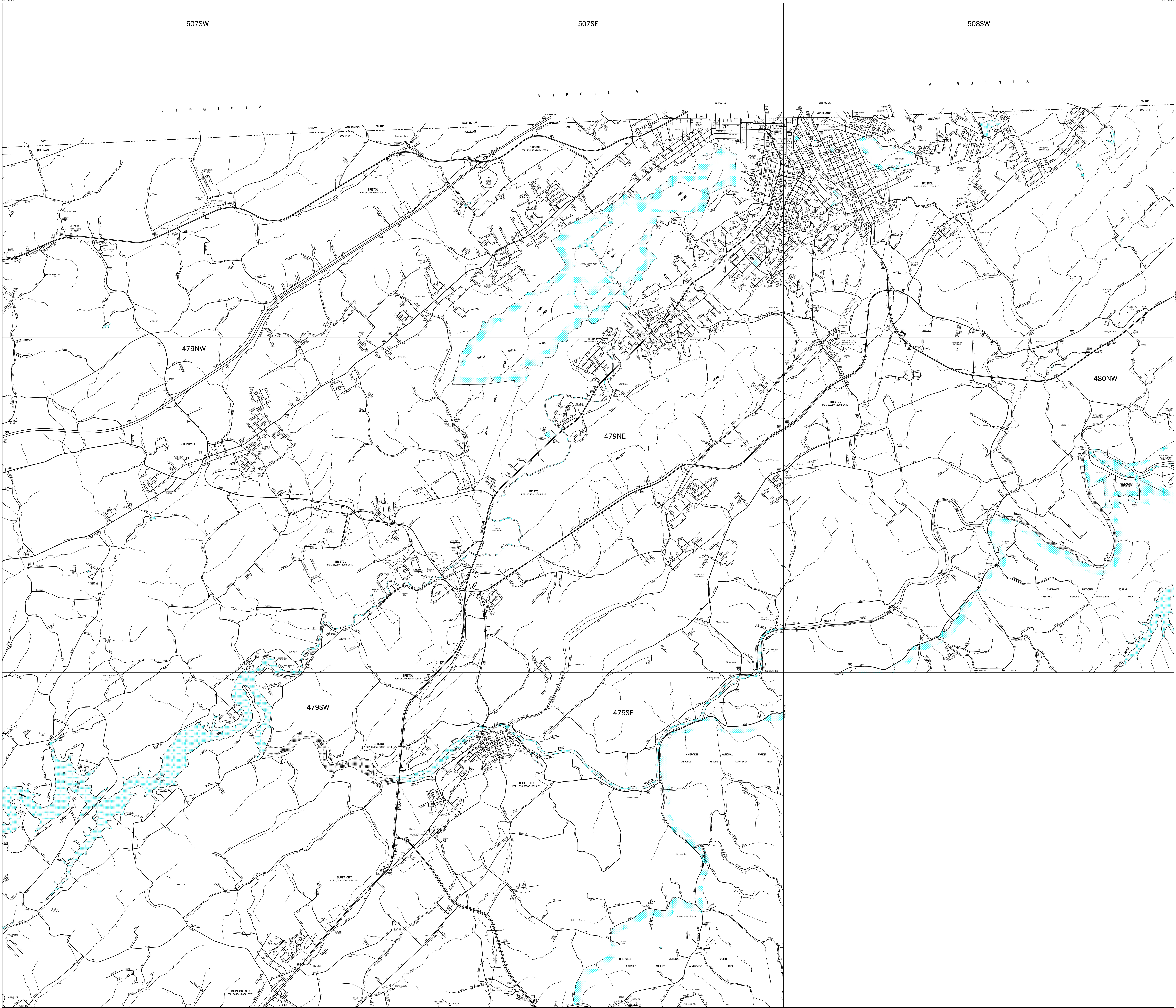
507SE

508SW

VIRGINIA

VIRGINIA

VIRGINIA



MAP RECORD
FIELD DATA OBTAINED IN 2001
FIELD EXAMINATION MADE IN

REVISIONS	DATE

- LEGEND**
- SCHOOL
 - HOSPITAL
 - POST OFFICE
 - COURTHOUSE
 - CITY HALL OR COMMUNITY CENTER
 - MONUMENT
 - AIRPORT, COMPLETE FACILITIES
 - AIRPORT, LIMITED FACILITIES
 - LANDING AREA OR STRIP
 - OBSERVATION OR LOOKOUT TOWER
 - ARMORY
 - HIGHWAY GARAGE (S-STATE, C-COUNTY)
 - POINTS OF INTEREST
 - INTERSTATE HIGHWAY
 - U.S. NUMBERED HIGHWAY
 - STATE HIGHWAY
 - STATE HIGHWAY
 - LAKE WITH DAM
 - RESERVOIR, POND OR LAKE
 - LEVEE OR DYKE
 - NARROW STREAM
 - WIDE STREAM
 - DAM WITH LOCK
 - HEAD OF NAVIGATION
 - NAVIGABLE STREAM
 - GRADE CROSSING
 - UNDERPASS-ROAD BELOW
 - OVERHEAD-ROAD ABOVE
 - RAILROAD TUNNEL
 - GRADE SEPARATION
 - FORD
 - LOW WATER BRIDGE
 - FREE FERRY OR TOLL FERRY
 - HIGHWAY BRIDGE-OVER 20 FEET
 - HIGHWAY BRIDGE-LONG RIVER CROSSING
 - PRIMITIVE OR UNIMPROVED ROAD
 - GRADED AND DRAINED, SOIL, GRAVEL OR STONE SURFACED ROAD
 - PAVED ROAD
 - GRADED AND DRAINED, SOIL, GRAVEL OR STONE SURFACED HIGHWAY
 - PAVED HIGHWAY
 - DIVIDED ROADWAY
 - DISTANCE IN MILES BETWEEN DESIGNATED POINTS
 - FULL CONTROL OF ACCESS
 - NATIONAL PARK SERVICE HIGHWAY
 - COUNTY LINE
 - STATE LINE
 - INCORPORATED CITY BOUNDARY
 - RESERVATION BOUNDARY



INDEX TO ADJOINING STATEWIDE PLANIMETRIC MAPS

507SW	507SE	508SW
479NW	479NE	480NW
479SW	479SE	

INDIVIDUAL MAP SHEETS AVAILABLE AT THE SCALE OF 1 INCH EQUALS 1,000 FEET

CITY AND VICINITY MAP
BRISTOL
SULLIVAN COUNTY

PREPARED BY THE
TENNESSEE DEPARTMENT OF TRANSPORTATION
LONG RANGE PLANNING DIVISION
IN COOPERATION WITH THE
U.S. DEPARTMENT OF TRANSPORTATION
FEDERAL HIGHWAY ADMINISTRATION

SCALE
0 2000 4000 6000 FEET
0 0.2 0.4 0.6 0.8 1.0 MILE

2005

AUTHORIZATION NO. 4019005825