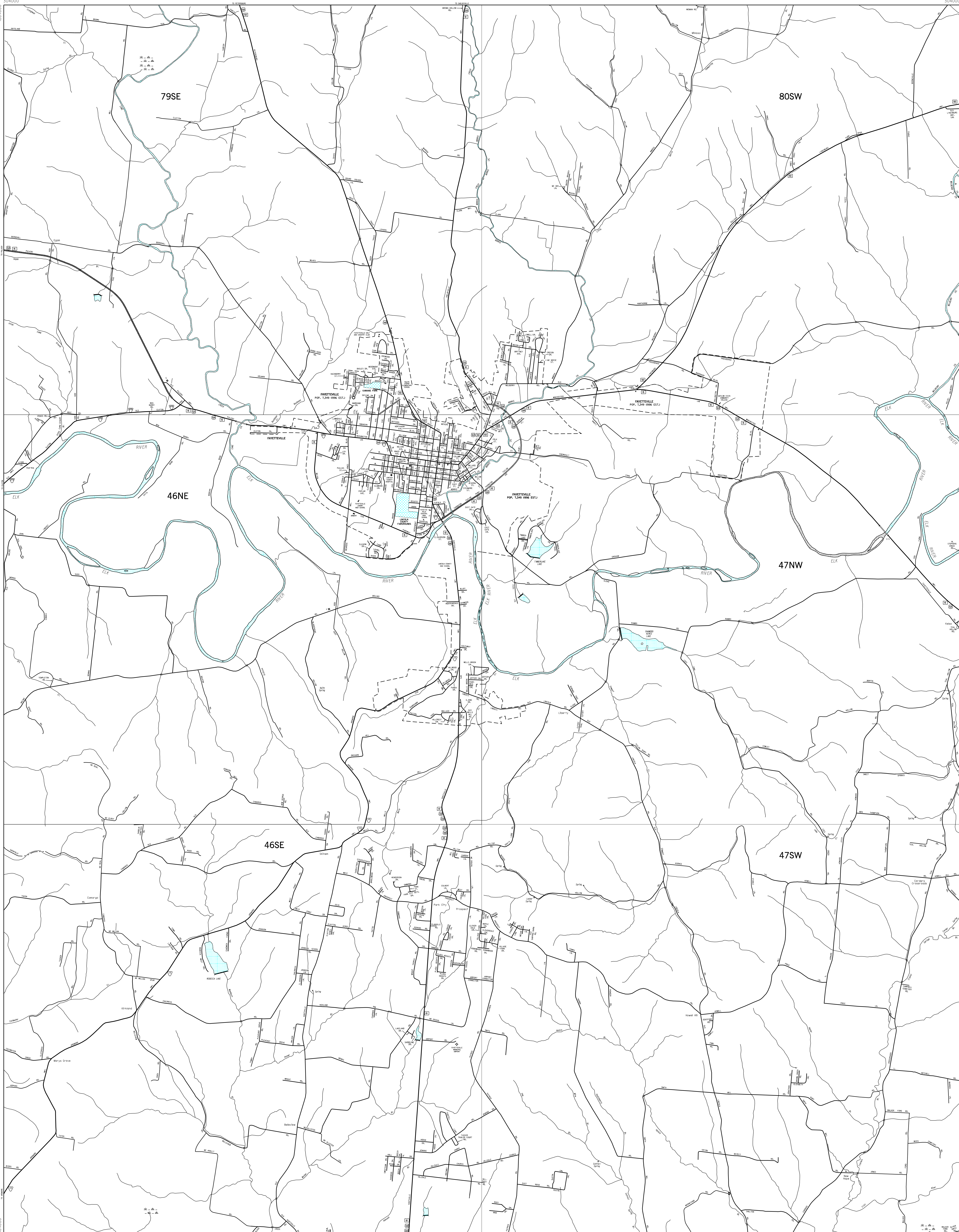


MAP RECORD	
FIELD DATA OBTAINED IN 1994	
FIELD EXAMINATION MADE IN 1996	
REVISIONS	
FEATURE	DATE
STATE HIGHWAY SYSTEM	2007



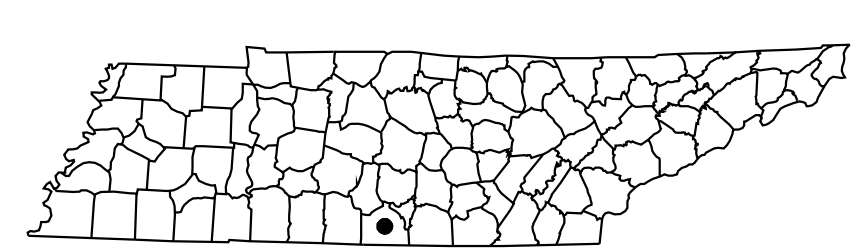
LEGEND

- SCHOOL
- HOSPITAL
- POST OFFICE
- COURTHOUSE
- CITY HALL OR COMMUNITY CENTER
- MONUMENT
- AIRPORT - COMPLETE FACILITIES
- AIRPORT - LIMITED FACILITIES
- LANDING AREA OR STRIP
- OBSERVATION OR LOOKOUT TOWER
- ARMORY
- HIGHWAY GARAGE (S-STATE, C-COUNTY)
- POINTS OF INTEREST
- INTERSTATE HIGHWAY
- U.S. NUMBERED HIGHWAY
- STATE HIGHWAY
- STATE HIGHWAY
- LAKE WITH DAM
- RESERVOIR, POND OR LAKE
- LEVEE OR DYKE
- NARROW STREAM
- WIDE STREAM
- DAM WITH LOCK
- HEAD OF NAVIGATION
- NAVIGABLE STREAM
- GRADE CROSSING
- UNDERPASS-ROAD BELOW
- OVERHEAD-ROAD ABOVE
- RAILROAD TUNNEL
- GRADE SEPARATION
- FORD
- LOW WATER BRIDGE
- FREE FERRY OR TOLL FERRY
- HIGHWAY BRIDGE-OVER 20 FEET
- HIGHWAY BRIDGE-LONG RIVER CROSSING
- PRIMITIVE OR UNIMPROVED ROAD
- GRADED AND DRAINED, SOIL, GRAVEL OR STONE SURFACED ROAD
- PAVED ROAD
- GRADED AND DRAINED, SOIL, GRAVEL OR STONE SURFACED HIGHWAY
- PAVED HIGHWAY
- DIVIDED ROADWAY
- DISTANCE IN MILES BETWEEN DESIGNATED POINTS
- FULL CONTROL OF ACCESS
- NATIONAL PARK SERVICE HIGHWAY
- COUNTY LINE
- STATE LINE
- INCORPORATED CITY BOUNDARY
- RESERVATION BOUNDARY

INDEX TO ADJOINING STATEWIDE PLANIMETRIC MAPS

79SE	80SW
46NE	47NW
46SE	47SW

INDIVIDUAL MAP SHEETS AVAILABLE AT THE SCALE OF 1 INCH EQUALS 1,000 FEET



CITY AND VICINITY MAP
FAYETTEVILLE
 LINCOLN COUNTY
 TENNESSEE

PREPARED BY THE
TENNESSEE DEPARTMENT OF TRANSPORTATION
 LONG RANGE PLANNING DIVISION
 IN COOPERATION WITH THE
 U.S. DEPARTMENT OF TRANSPORTATION
 FEDERAL HIGHWAY ADMINISTRATION

