

505SE

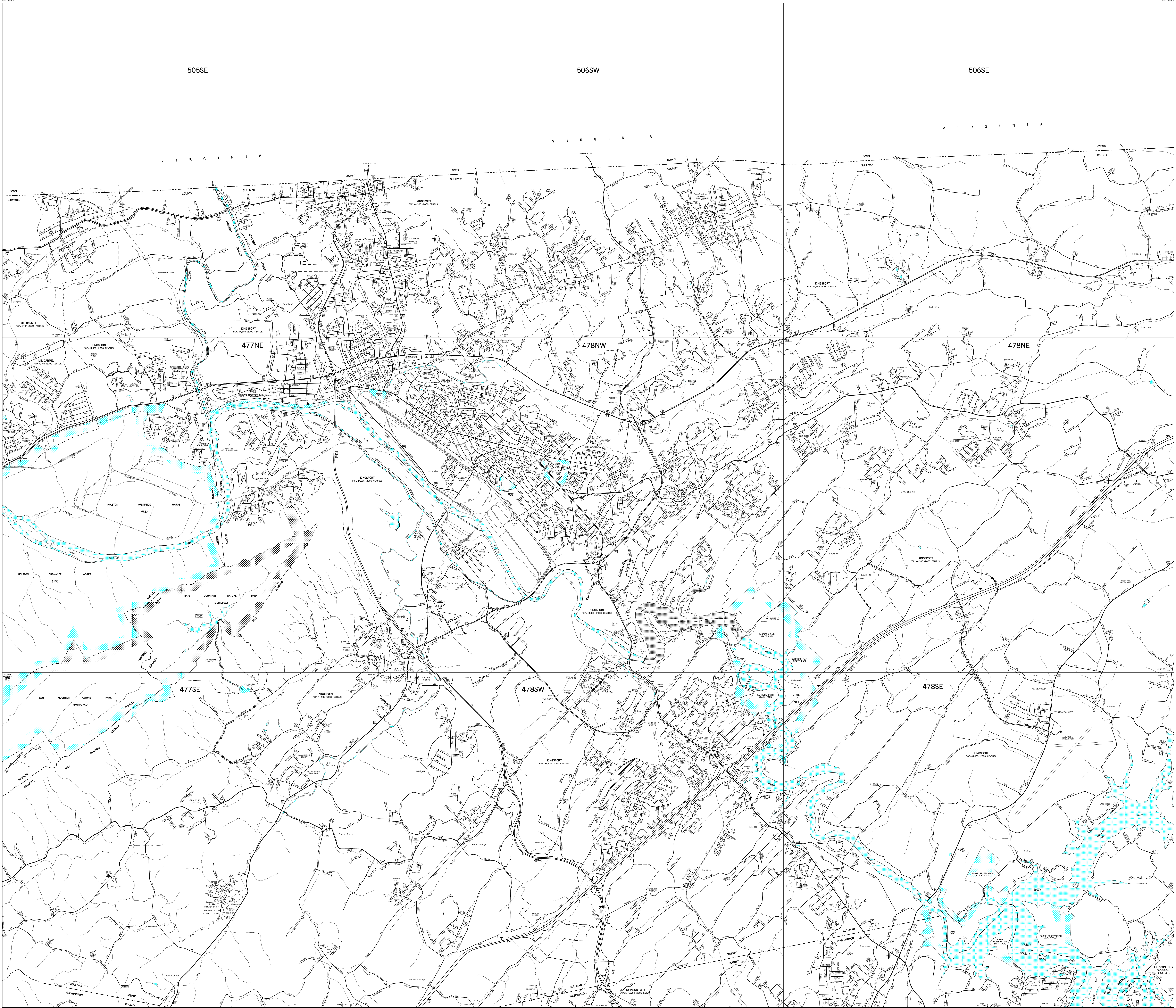
506SW

506SE

VIRGINIA

VIRGINIA

VIRGINIA



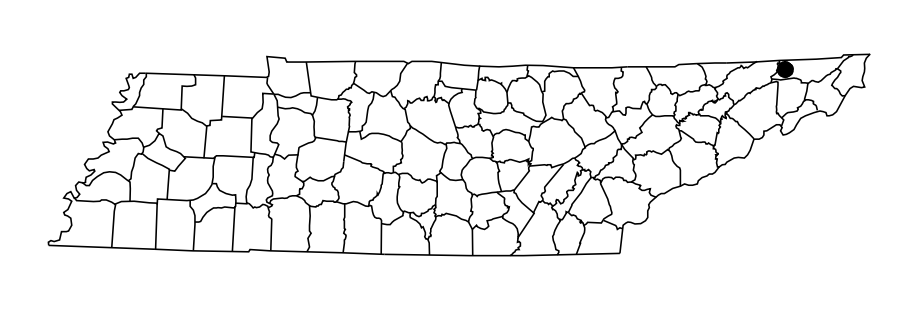
MAP RECORD
FIELD DATA OBTAINED IN 2001
FIELD EXAMINATION MADE IN

REVISIONS	FEATURE	DATE
	STATE HIGHWAY SYSTEM	2007

HAWKINS COUNTY FIELD EXAMINATION MADE
WASHINGTON COUNTY FIELD EXAMINATION MADE

- LEGEND**
- SCHOOL
 - HOSPITAL
 - POST OFFICE
 - COURTHOUSE
 - CITY HALL OR COMMUNITY CENTER
 - MONUMENT
 - AIRPORT, COMPLETE FACILITIES
 - AIRPORT, LIMITED FACILITIES
 - LANDING AREA OR STRIP
 - OBSERVATION OR LOOKOUT TOWER
 - ARMORY
 - HIGHWAY GARAGE (S-STATE, C-COUNTY)
 - POINTS OF INTEREST
 - INTERSTATE HIGHWAY
 - U.S. NUMBERED HIGHWAY
 - STATE HIGHWAY
 - STATE HIGHWAY
 - LAKE WITH DAM
 - RESERVOIR, POND OR LAKE
 - LEVEE OR DYKE
 - NARROW STREAM
 - WIDE STREAM
 - DAM WITH LOCK
 - HEAD OF NAVIGATION
 - NAVIGABLE STREAM
 - GRADE CROSSING
 - UNDERPASS-ROAD BELOW
 - OVERHEAD-ROAD ABOVE
 - RAILROAD TUNNEL
 - GRADE SEPARATION
 - FORD
 - LOW WATER BRIDGE
 - FREE FERRY OR TOLL FERRY
 - HIGHWAY BRIDGE-OVER 20 FEET
 - HIGHWAY BRIDGE-LONG RIVER CROSSING
 - PRIMITIVE OR UNIMPROVED ROAD
 - GRADED AND DRAINED, SOIL, GRAVEL OR STONE SURFACED ROAD
 - PAVED ROAD
 - GRADED AND DRAINED, SOIL, GRAVEL OR STONE SURFACED HIGHWAY
 - PAVED HIGHWAY
 - DIVIDED ROADWAY
 - DISTANCE IN MILES BETWEEN DESIGNATED POINTS
 - FULL CONTROL OF ACCESS
 - NATIONAL PARK SERVICE HIGHWAY
 - COUNTY LINE
 - STATE LINE
 - INCORPORATED CITY BOUNDARY
 - RESERVATION BOUNDARY
 - PAVED OR GRAVEL PUBLIC ROAD MAINTENANCE NOT CITY OR COUNTY RESPONSIBILITY

ADVANCED POINT
SUBJECT TO
CONNECTION



ADVANCED POINT
SUBJECT TO
CONNECTION

INDEX TO ADJOINING STATEWIDE PLANIMETRIC MAPS

505SE	506SW	506SE
477NE	478NW	478NE
477SE	478SW	478SE

INDIVIDUAL MAP SHEETS AVAILABLE AT THE
SCALE OF 1 INCH EQUALS 1,000 FEET

CITY AND VICINITY MAP
KINGSPORT
SULLIVAN AND HAWKINS COUNTIES

PREPARED BY THE
TENNESSEE DEPARTMENT OF TRANSPORTATION
LONG RANGE PLANNING DIVISION
IN COOPERATION WITH THE
U.S. DEPARTMENT OF TRANSPORTATION
FEDERAL HIGHWAY ADMINISTRATION

SCALE
0 2000 4000 6000 FEET
0.2 0.4 0.6 0.8 1.0 MILE

2007

AUTHORIZATION NO. 40190078250