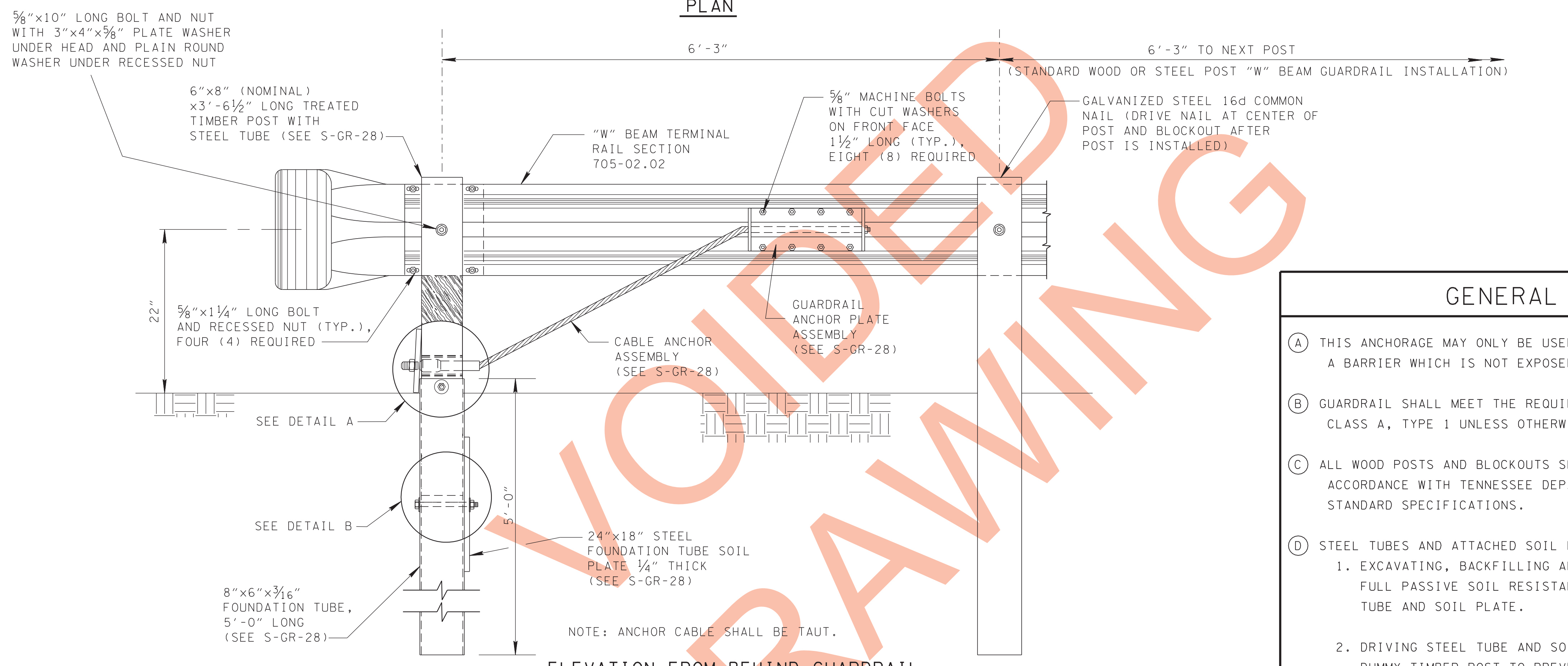


NOTE: THE "POST 2" ASSEMBLY DEPENDS ON WHETHER THE TRAILING END TERMINAL IS ATTACHED TO THE STANDARD WOOD (SHOWN) OR STEEL POST "W" BEAM GUARDRAIL INSTALLATION AND IS TO BE BUILT ACCORDING TO S-GR-12, S-GR-13 AND S-GR-13A

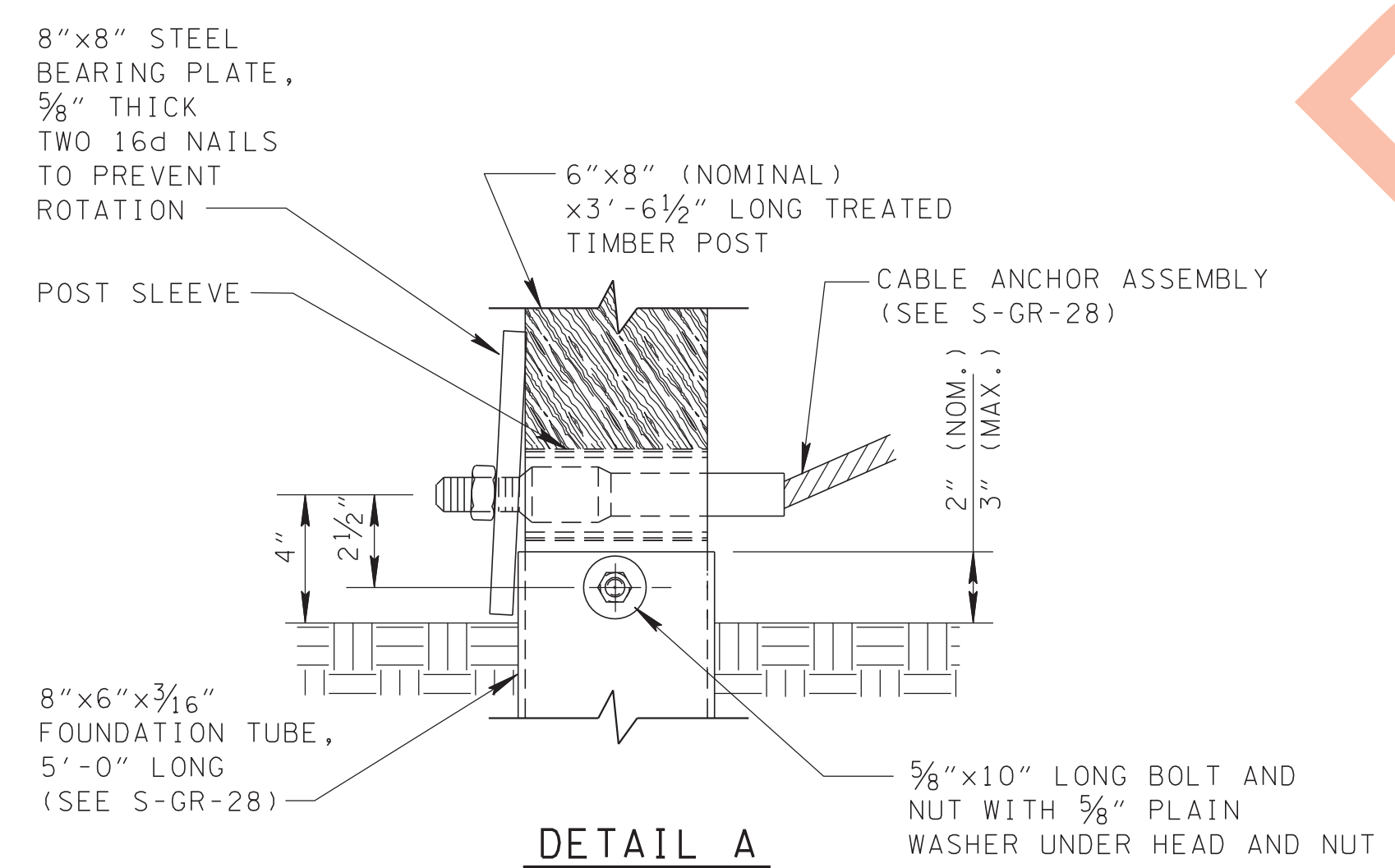
PLAN



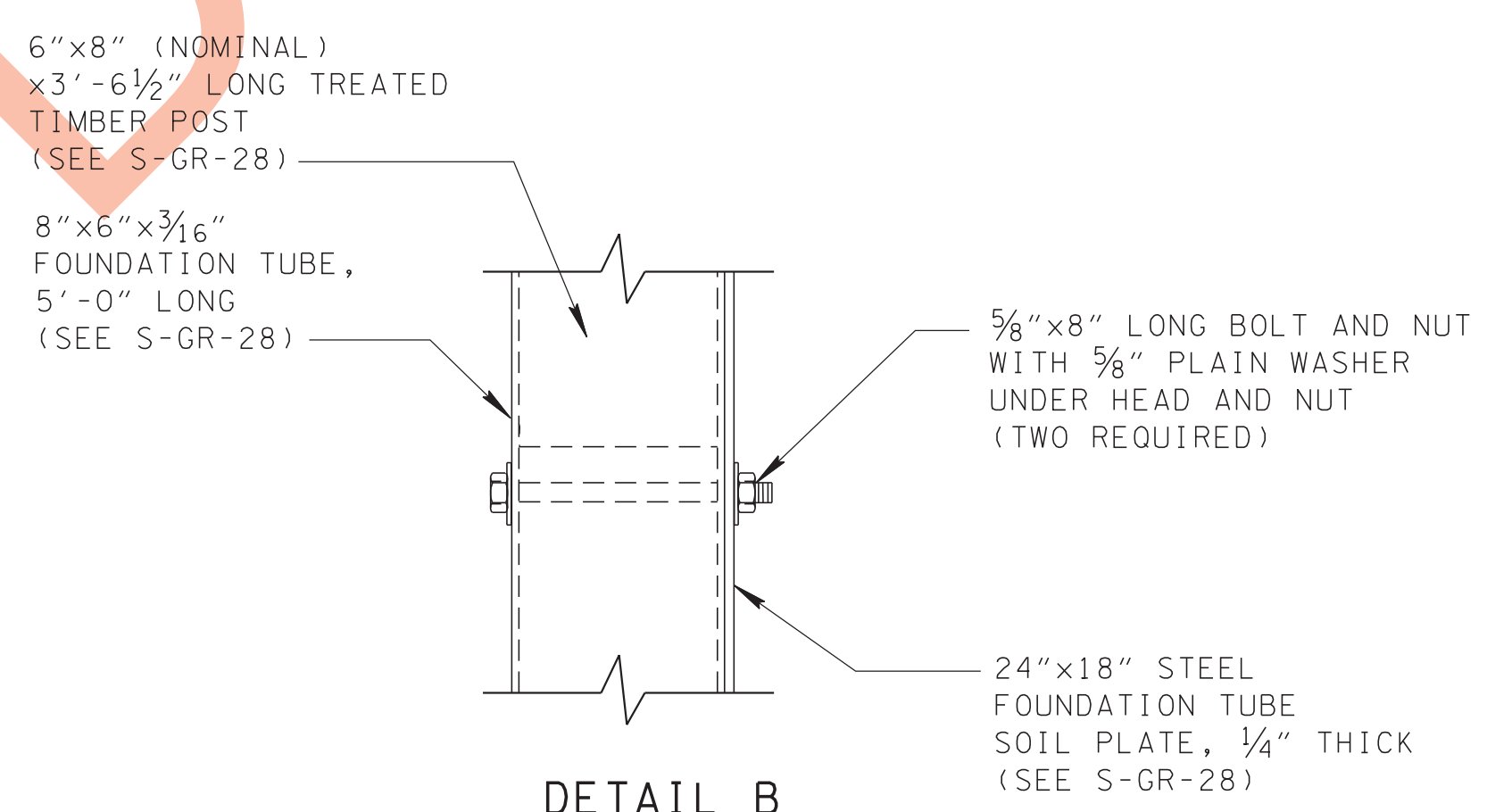
ELEVATION FROM BEHIND GUARDRAIL

GENERAL NOTES

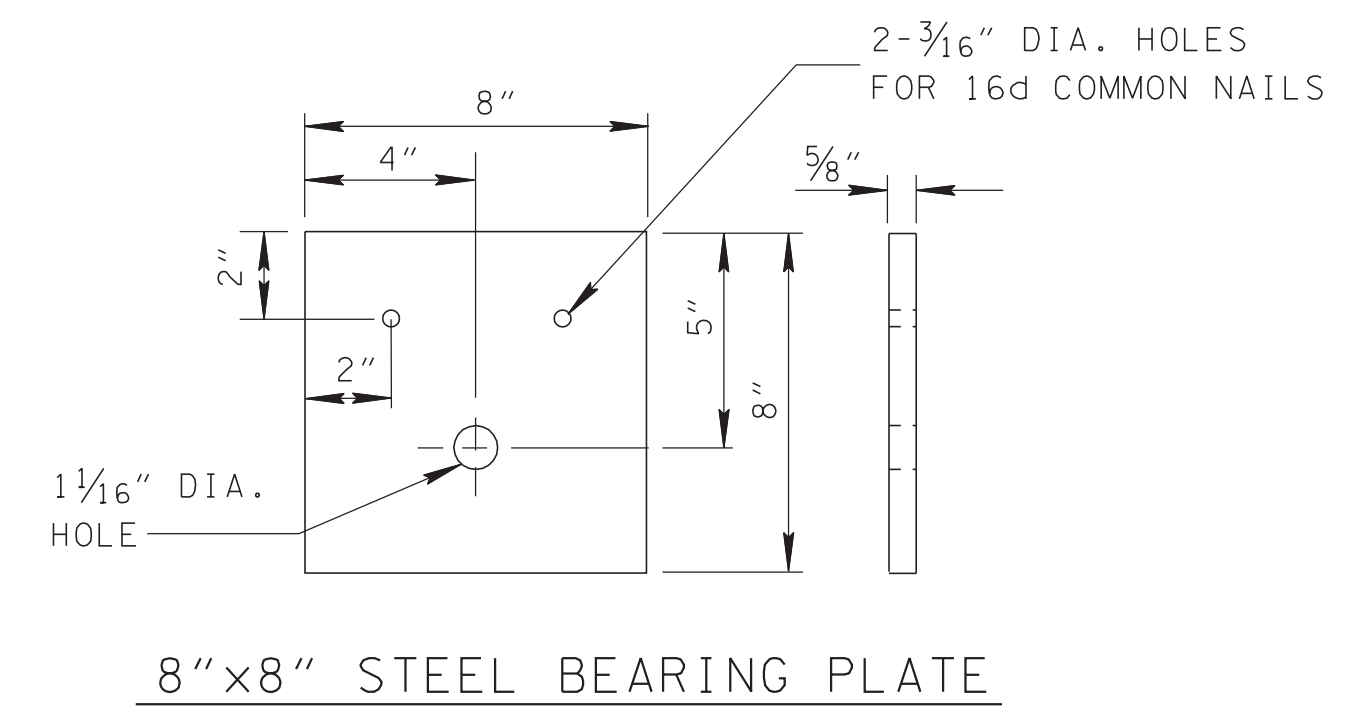
- (A) THIS ANCHORAGE MAY ONLY BE USED ON THE TRAILING END OF A BARRIER WHICH IS NOT EXPOSED TO VEHICULAR IMPACT.
- (B) GUARDRAIL SHALL MEET THE REQUIREMENTS OF AASHTO M 180, CLASS A, TYPE 1 UNLESS OTHERWISE DESIGNATED.
- (C) ALL WOOD POSTS AND BLOCKOUTS SHALL BE TREATED TIMBER IN ACCORDANCE WITH TENNESSEE DEPARTMENT OF TRANSPORTATION STANDARD SPECIFICATIONS.
- (D) STEEL TUBES AND ATTACHED SOIL PLATE MAY BE INSTALLED BY:
 1. EXCAVATING, BACKFILLING AND COMPACTING TO PROVIDE FULL PASSIVE SOIL RESISTANCE TO ALL SURFACES OF THE TUBE AND SOIL PLATE.
 2. DRIVING STEEL TUBE AND SOIL PLATE AS A UNIT WITH A DUMMY TIMBER POST TO PREVENT DAMAGE TO BREAKAWAY POST.
- (E) UNIT PRICE FOR ITEM NO. 705-04.03 GUARDRAIL TERMINAL (TYPE 13) PER EACH SHALL INCLUDE COSTS OF FURNISHING AND INSTALLING ALL COMPONENTS AS DETAILED, COMPLETE IN-PLACE.



DETAIL A



DETAIL B



8"x8" STEEL BEARING PLATE