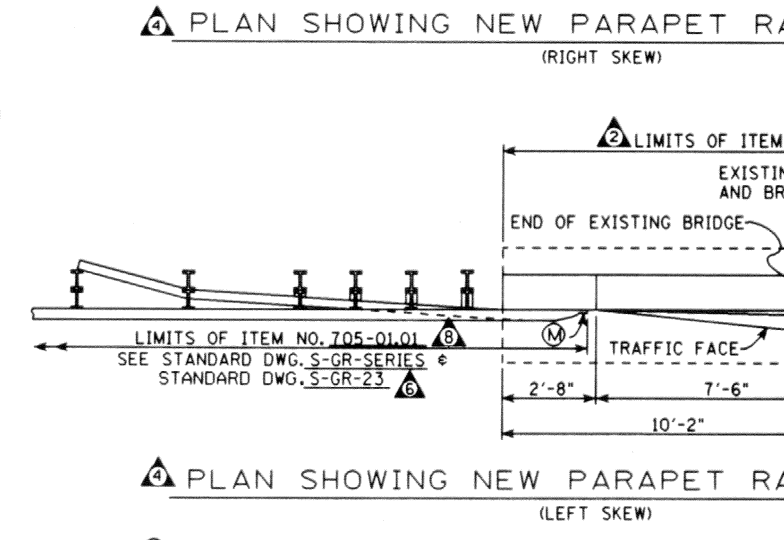
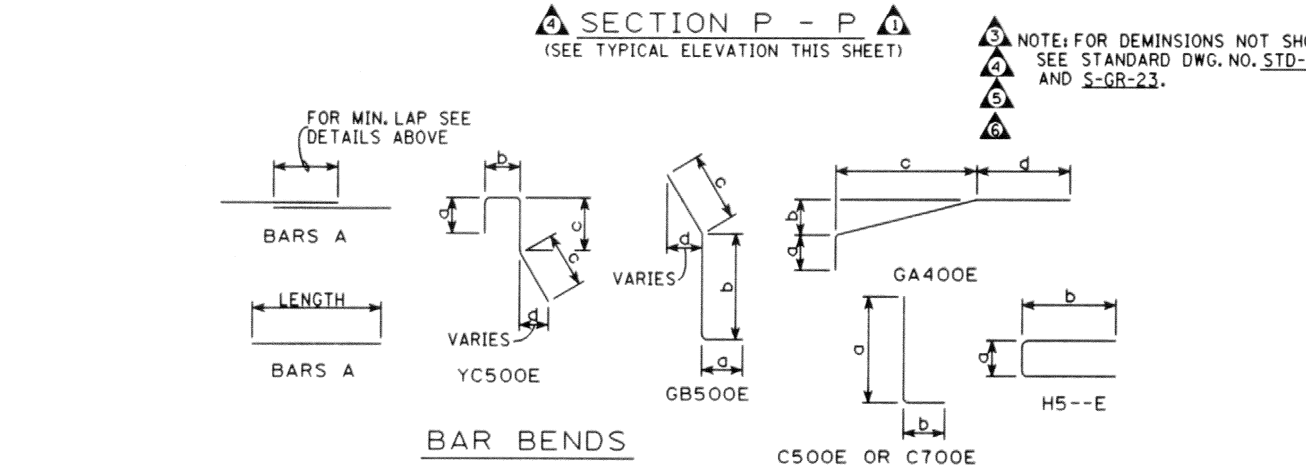
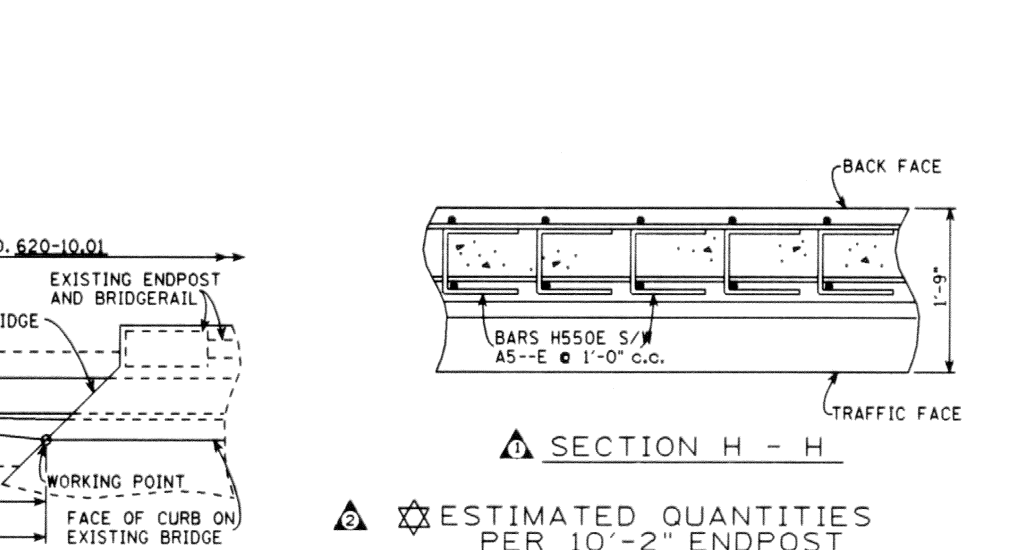
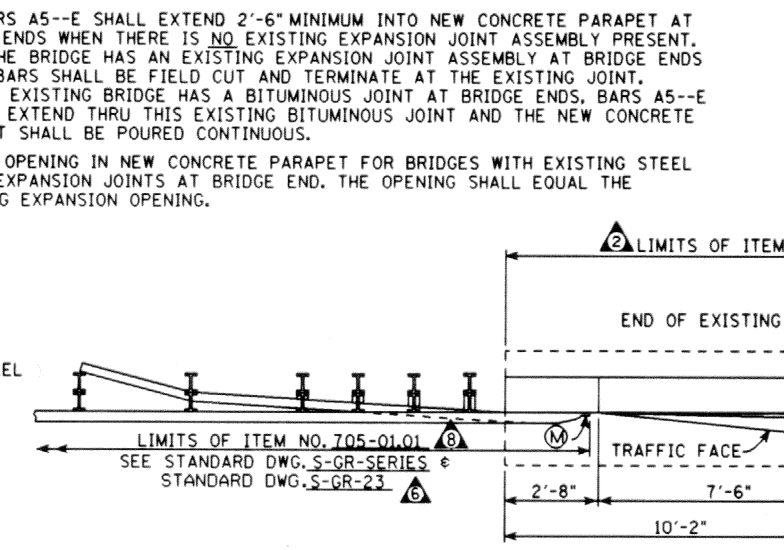
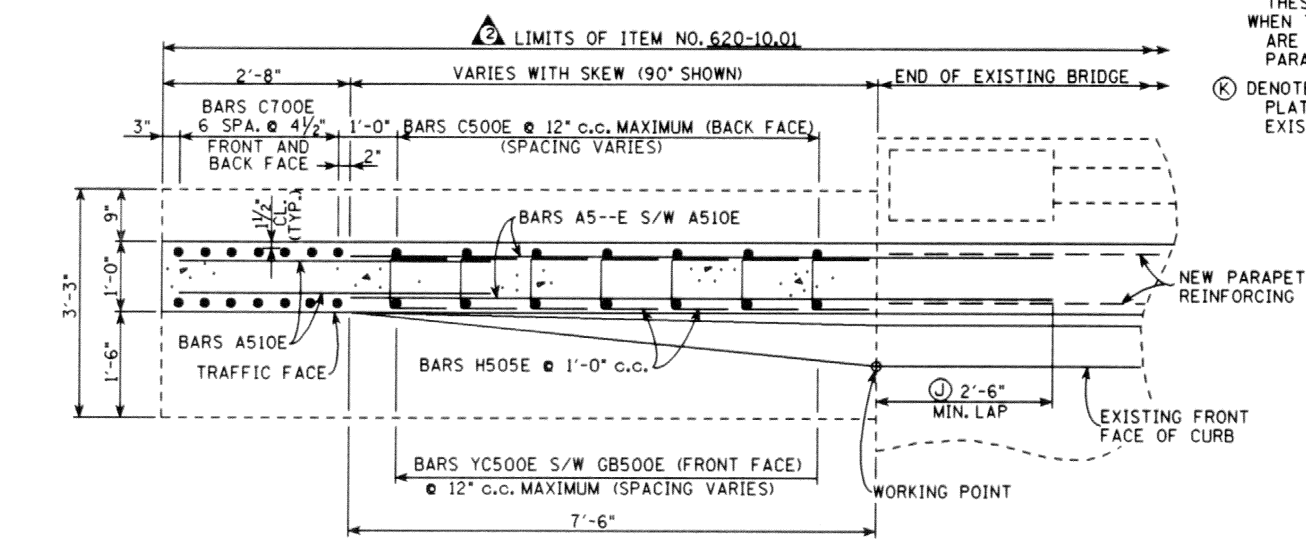
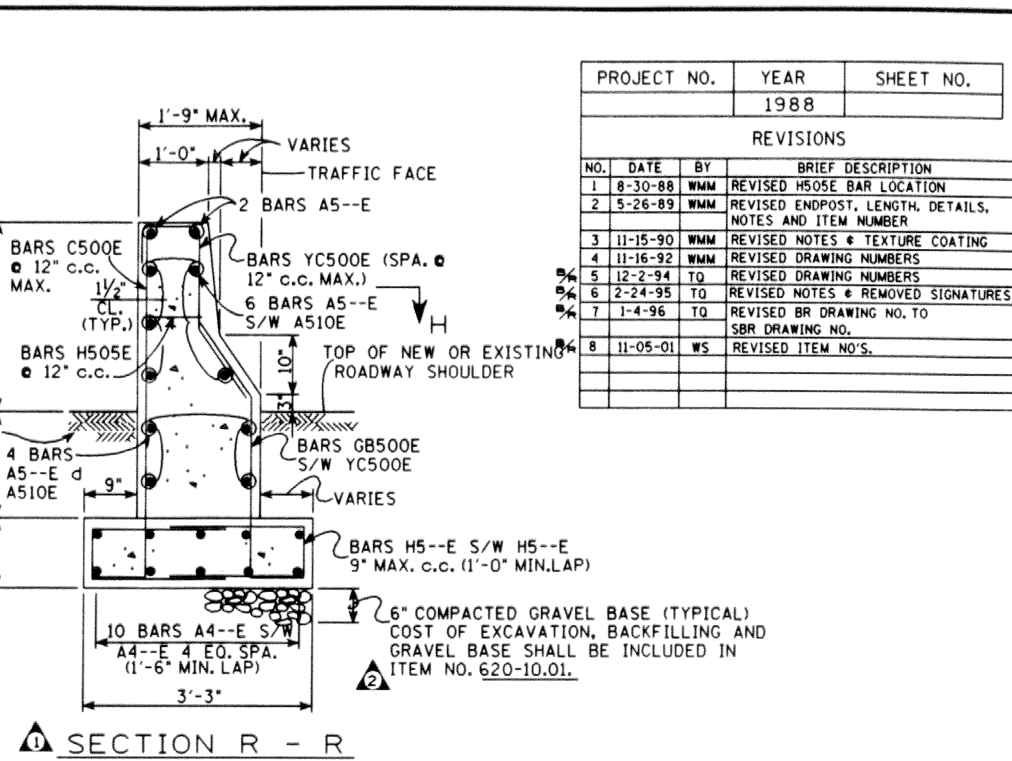
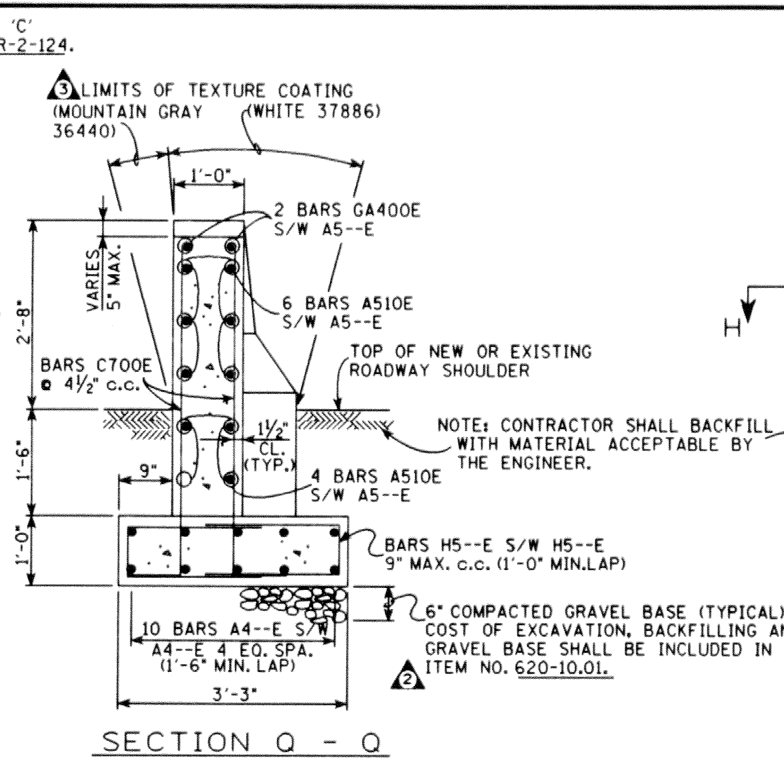
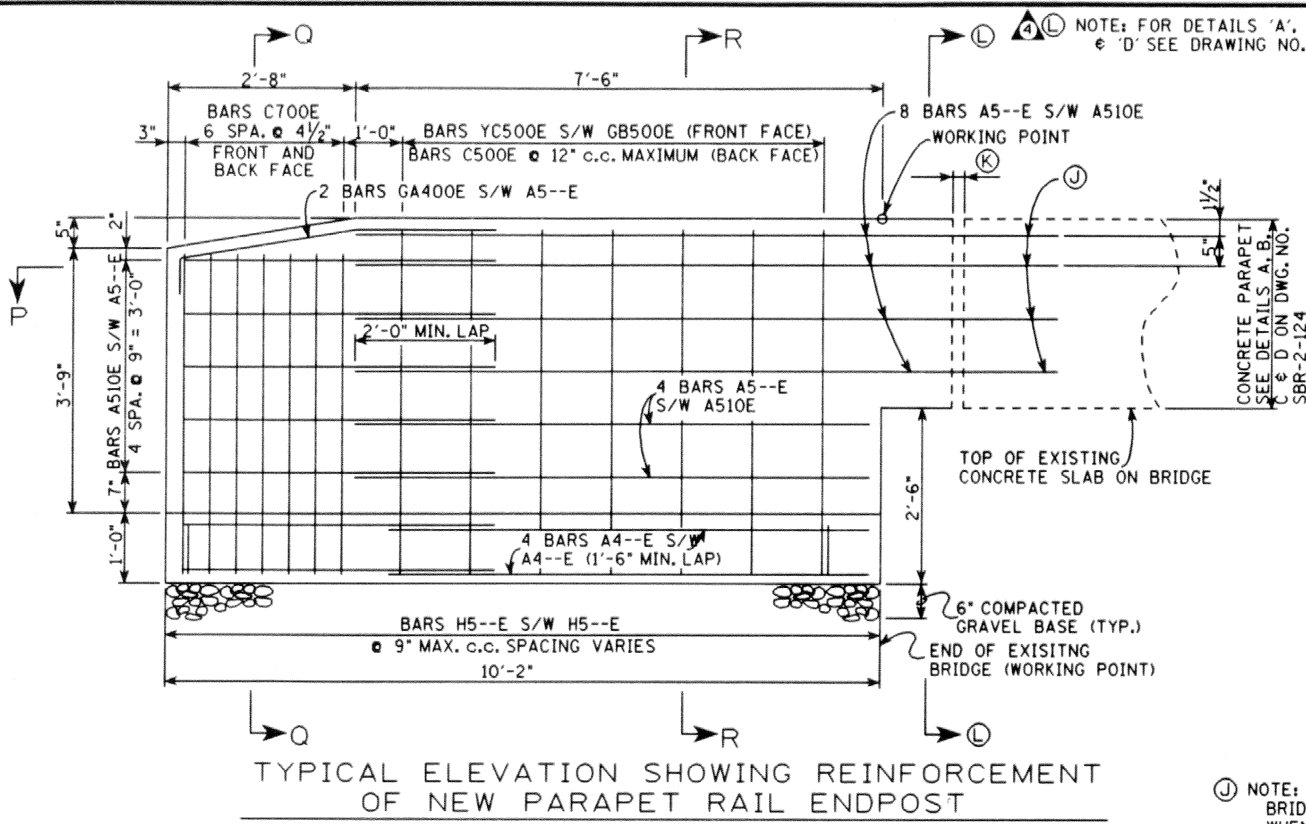


PROJECT NO.	YEAR	SHEET NO.	
	1988		
REVISIONS			
NO.	DATE	BY	BRIEF DESCRIPTION
1	8-30-88	WMM	REVISED H505E BAR LOCATION
2	5-26-89	WMM	REVISED ENDPST. LENGTH, DETAILS, NOTES AND ITEM NUMBER
3	11-15-90	WMM	REVISED NOTES & TEXTURE COATING
4	11-16-92	WMM	REVISED DRAWING NUMBERS
5	12-2-94	TQ	REVISED DRAWING NUMBERS
6	2-24-95	TQ	REVISED NOTES & REMOVED SIGNATURES
7	1-4-96	TQ	REVISED BR DRAWING NO. TO SBR DRAWING NO.
8	11-05-01	WS	REVISED ITEM NO'S.



ESTIMATED QUANTITIES PER 10'-2" ENDPST

ITEM	CLASS 'A' EPOXY COATED CONCRETE C.Y.	REINFORCING STEEL LB.	TEXTURED COATED FINISH (NEW) S.Y.
SKEWS 30° - 49°	3.1	707	7.6
SKEWS 50° - 69°	3.1	680	7.6
SKEWS 50° - 69°	3.1	679	7.6

DESIGNED BY: KIM FRANKENFIELD DATE: 9-92
 DRAWN BY: GENTRY MOUNTURFF DATE: 9-92
 SUPERVISED BY: GENTRY MOUNTURFF DATE: 9-92
 CHECKED BY: MOUNTURFF DATE: 9-92

NOTE: FOR ADDITIONAL DETAILS SHOWING BAR NUMBERS, DIMENSIONS AND BILL OF STEEL FOR ALL SKEWS SEE DRAWING NUMBER SBR-2-126.

NOTE: WHEN POURING NEW 10'-2" CONCRETE ENDPST, THE CONTRACTOR SHALL MAKE PROVISIONS FOR SETTING THE GUARDRAIL CONNECTION INSERT ASSEMBLIES. SEE GUARDRAIL ATTACHMENT AND INSERT ASSEMBLY DETAILS ON STANDARD DWG. STD-1-1 AND S-GR-23. COST OF GUARDRAIL ATTACHMENT INSERT ASSEMBLIES SHALL BE INCLUDED IN ITEM NO. 620-10.01.

MINOR REVISION - FHWA APPROVAL NOT REQUIRED

STATE OF TENNESSEE
 DEPARTMENT OF TRANSPORTATION

DETAILS SHOWING REPLACEMENT OF EXISTING BRIDGERAIL SYSTEM WITH NEW JERSEY SHAPE CONCRETE PARAPET AND NEW 10'-2" ENDPST 1988

SBR-2-125