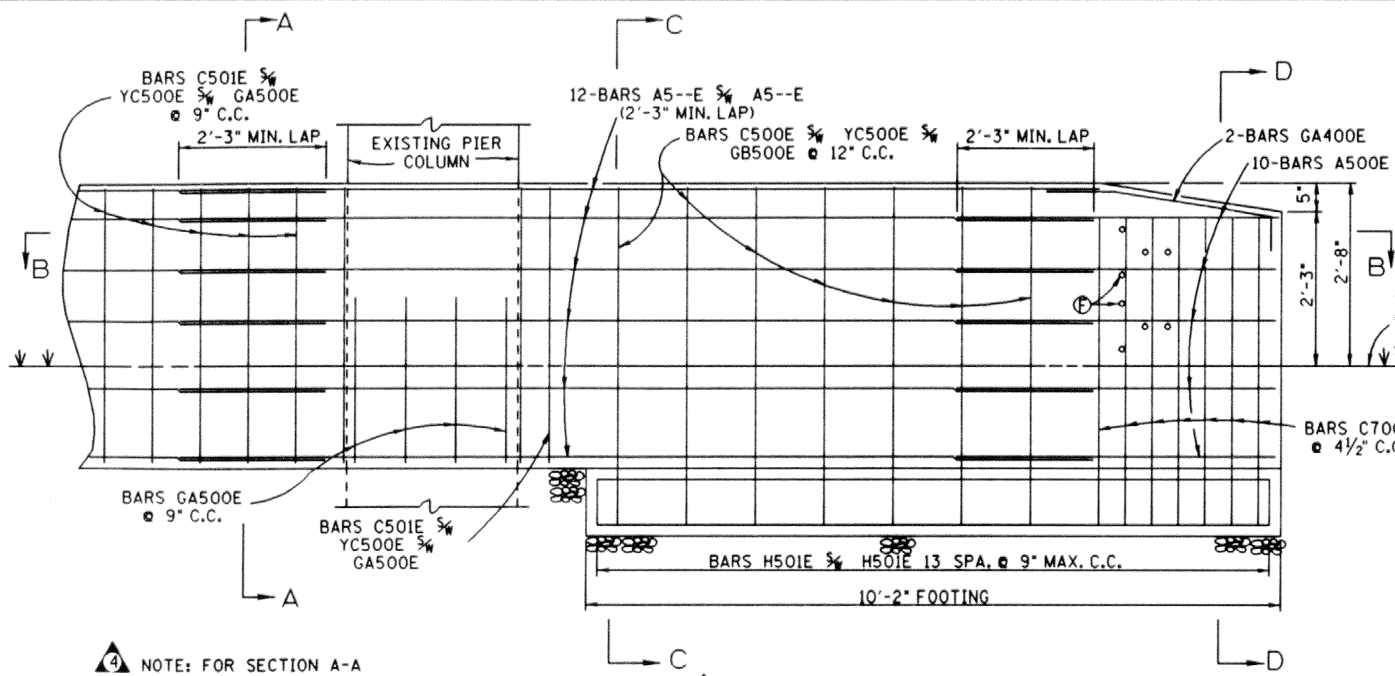
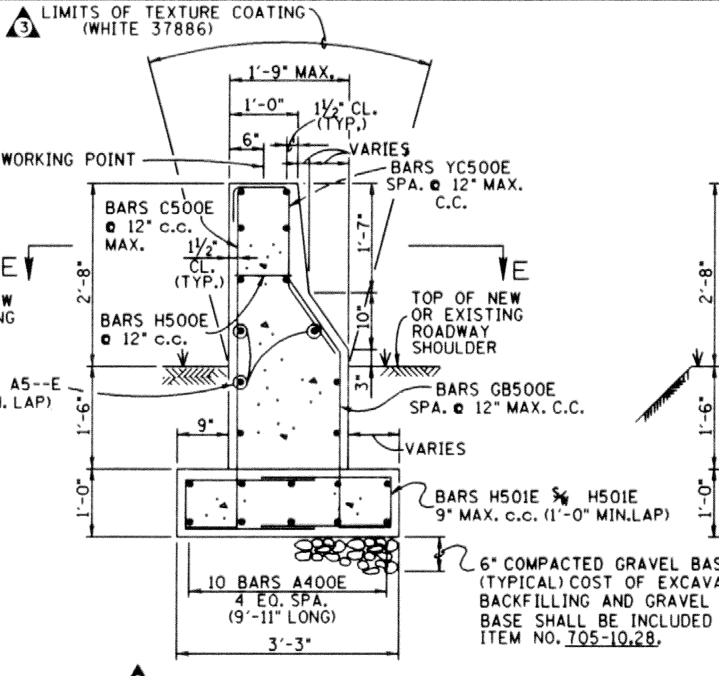


PROJECT NO.	YEAR	SHEET NO.	
	1988		
REVISIONS			
NO.	DATE	BY	BRIEF DESCRIPTION
1	8-30-88	WMM	REVISED H500E BARS LOCATIONS.
2	5-26-89	WMM	REVISED ENDPST, MISC. NOTES AND ADDED SECTION.
3	11-15-90	WMM	REVISED TEXTURE COATING AND NOTE.
4	11-16-92	WMM	REVISED DRAWING NUMBERS.
5	12-2-94	TO	REVISED DRAWING NUMBERS.
6	2-24-95	TO	REVISED NOTE & REMOVED SIGNATURES
7	1-4-96	TO	REVISED BR DRAWING NO. TO SBR DRAWING NO.

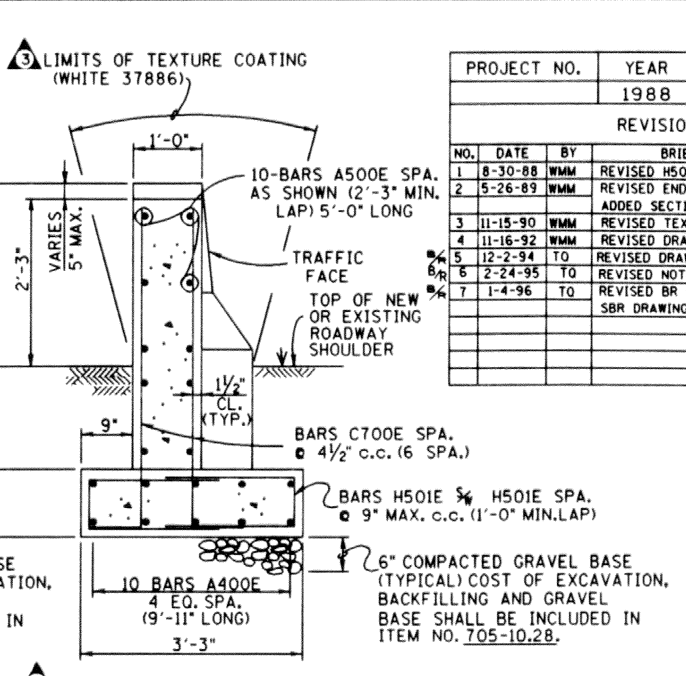


② TYPICAL ELEVATION (SHOWING REINFORCEMENT)

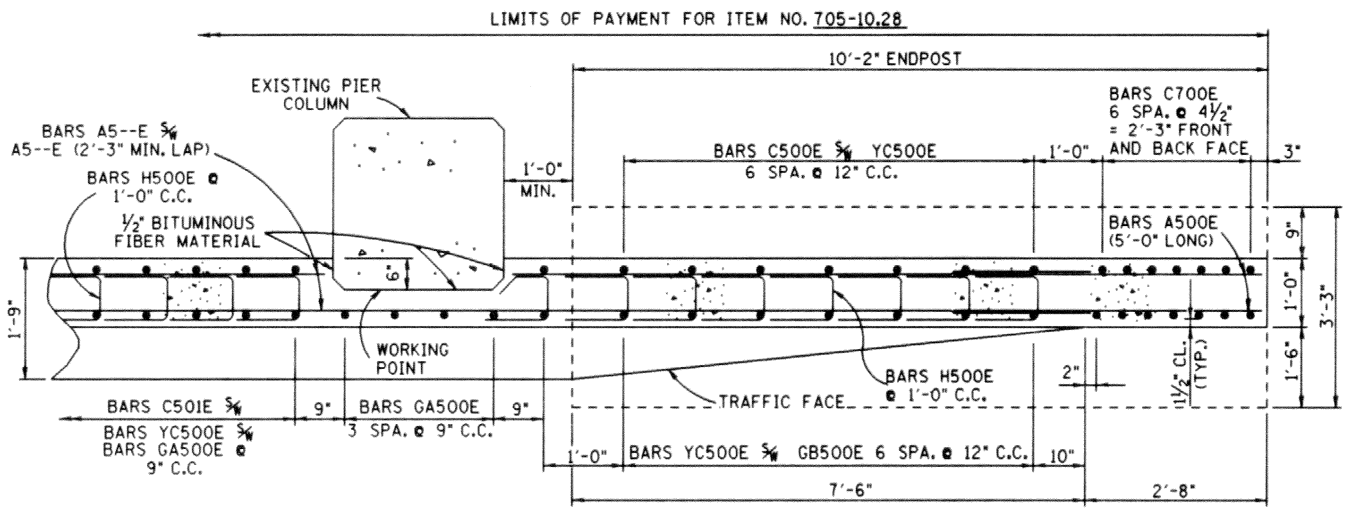
① ② ③ ④ ⑤ ⑥ ⑦ WHEN POURING NEW 10'-2" ENDPST PROVISIONS SHALL BE MADE FOR SETTING THE GUARDRAIL CONNECTOR INSERT ASSEMBLIES, SEE CONNECTION DETAILS ON STANDARD DRAWINGS STD-1-1 AND S-GR-23.



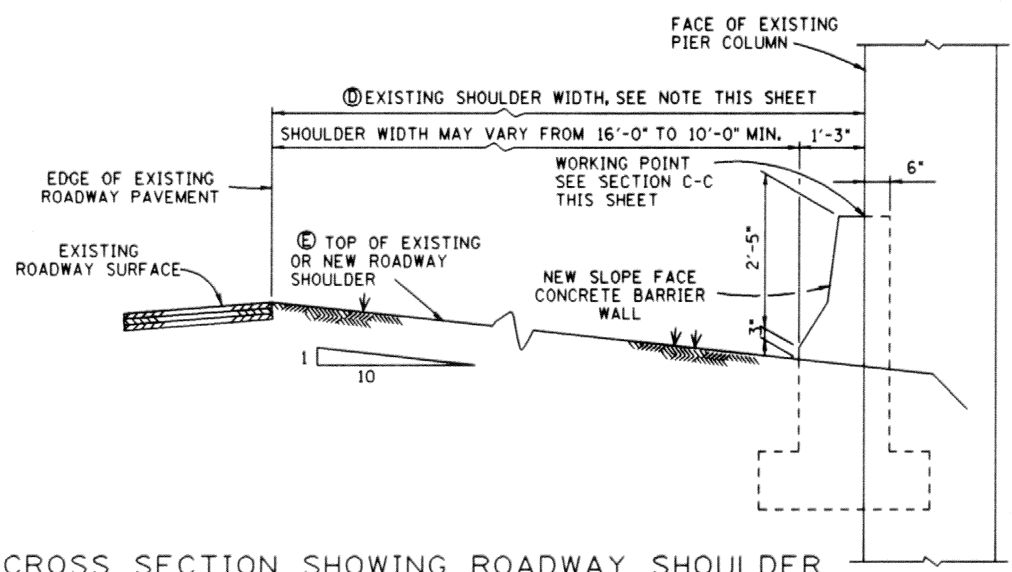
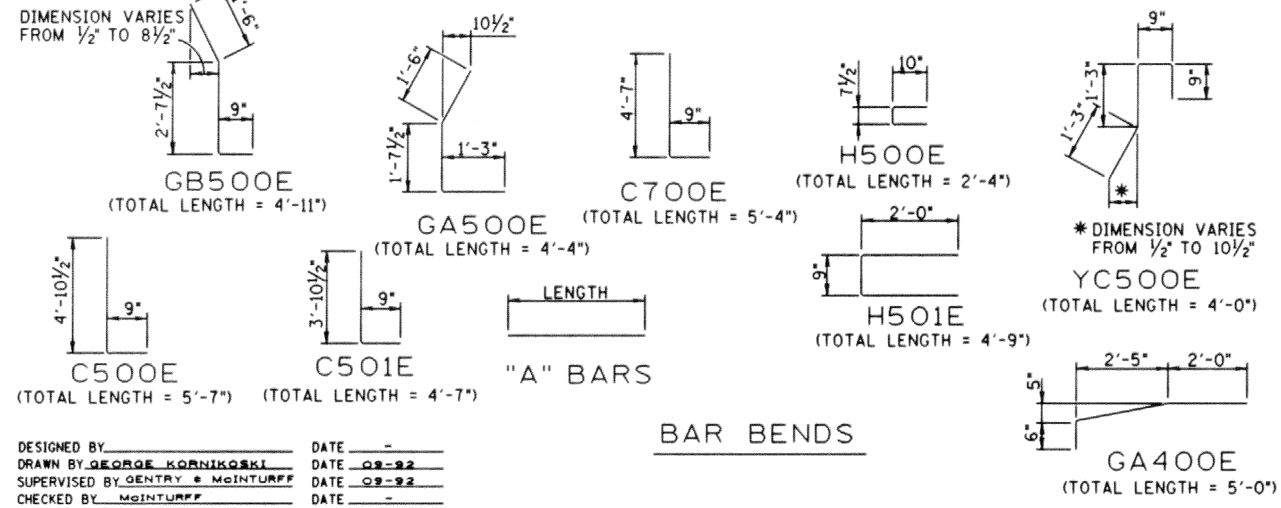
② SECTION C - C



② SECTION D - D



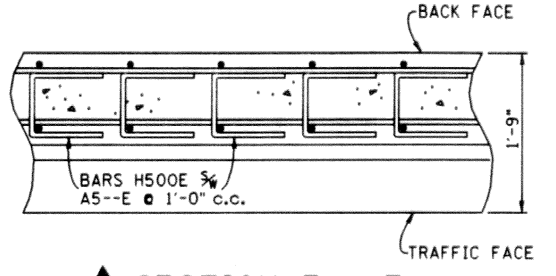
② PLAN-SECTION B - B



② CROSS SECTION SHOWING ROADWAY SHOULDER CLEARANCES FOR NEW SLOPE FACE CONCRETE BARRIER WALL PIER PROTECTION

② ④ ⑤ NOTE: DETAILS SHOWN ARE FOR NEW SLOPE FACE CONCRETE BARRIER WALL PIER PROTECTION WITH EXISTING ROADWAY SHOULDER WIDTHS FROM 16'-0" TO 11'-3" FROM EDGE OF THE EXISTING ROADWAY PAVEMENT TO FACE OF THE EXISTING CONCRETE PIER COLUMNS. WHEN EXISTING SHOULDER WIDTHS ARE 11'-2" OR LESS USE DETAILS SHOWING VERTICAL FACE CONCRETE BARRIER WALL PIER PROTECTION AS SHOWN ON DWG. NOS. SBR-2-129 AND SBR-2-130.

⑥ NOTE: MAXIMUM EXISTING ROADWAY SHOULDER SLOPES SHALL NOT EXCEED A SLOPE OF 10:1. WHEN SHOULDER SLOPES EXCEED A 10:1 SLOPE, THEN THE SHOULDERS MUST BE CORRECTED BY GRADING AND PLACING OF BORROW MATERIAL (UNCLASSIFIED) WITH A TOPPING OF THREE (3) INCH MINIMUM THICKNESS OF ITEM NO. 303-01 MINERAL AGGREGATE, TYPE "A" BASE, GRADING "D". ALL MATERIALS AND LABOR NECESSARY FOR GRADING AND REBUILDING THE NEW SHOULDER SLOPES TO THE FULL SATISFACTION OF THE ENGINEER SHALL BE INCLUDED IN ITEMS BID ON.



① SECTION E - E

② ESTIMATED QUANTITIES FOR 10'-2" ENDPST WITH FOOTING (EACH) ⑥

CONCRETE CLASS "A" C.Y.	EPOXY COATED REINFORCING STEEL LB.	TEXTURE COATED FINISHED (NEW) S.Y.
2.7	634	7.1

ESTIMATED QUANTITIES FOR BARRIER WALL (LINEAR FOOT) ⑥

CONCRETE CLASS "A" C.Y.	EPOXY COATED REINFORCING STEEL LB.	TEXTURE COATED FINISHED (NEW) S.Y.
0.22	34	0.73

② ④ ⑤ NOTE: ESTIMATED QUANTITIES SHOWN INCLUDE ALL LABOR AND MATERIALS NECESSARY TO POUR THE NEW 10'-2" CONCRETE ENDPST AND BARRIER WALL AS SHOWN IN DETAILS THESE DRAWINGS (SBR-2-127 AND SBR-2-128). COST SHALL BE INCLUDED IN ITEM NO. 705-10.28, CONCRETE BARRIER WALL FOR BRIDGE PIERS, LIN. FT.

MINOR REVISION - FHWA APPROVAL NOT REQUIRED

STATE OF TENNESSEE  
DEPARTMENT OF TRANSPORTATION

DETAILS SHOWING PIER PROTECTION WITH NEW CONCRETE BARRIER WALL 1988

DETAILS GRA-28  
ITEM NO. 705-10.28  
LINEAR FOOT

DESIGNED BY: GEORGE KORNIKOSKI DATE: 02-92  
DRAWN BY: GEORGE KORNIKOSKI DATE: 02-92  
SUPERVISED BY: GENTRY MCINTURFF DATE: 02-92  
CHECKED BY: MCINTURFF DATE: 02-92