

1 @ 10 x 7 REINFORCED CONCRETE SLAB BRIDGE

Table with columns: Fill Height ft., Dimensions (ST, WT, BW), Bars TST, Bars TSB, Bars EWE, Bars EWI, Bars LNT, Bars LND, Bars WS, Bars WF, Bars EWF, Concrete CY/LF, Reinf. Steel LB/LF. Rows include No Fill, 3, 5, 10, 20, 30, 40, 50, 60.

1 @ 10 x 8 REINFORCED CONCRETE SLAB BRIDGE

Table with columns: Fill Height ft., Dimensions (ST, WT, BW), Bars TST, Bars TSB, Bars EWE, Bars EWI, Bars LNT, Bars LND, Bars WS, Bars WF, Bars EWF, Concrete CY/LF, Reinf. Steel LB/LF. Rows include No Fill, 3, 5, 10, 20, 30, 40, 50, 60.

1 @ 10 x 9 REINFORCED CONCRETE SLAB BRIDGE

Table with columns: Fill Height ft., Dimensions (ST, WT, BW), Bars TST, Bars TSB, Bars EWE, Bars EWI, Bars LNT, Bars LND, Bars WS, Bars WF, Bars EWF, Concrete CY/LF, Reinf. Steel LB/LF. Rows include No Fill, 3, 5, 10, 20, 30, 40, 50, 60.

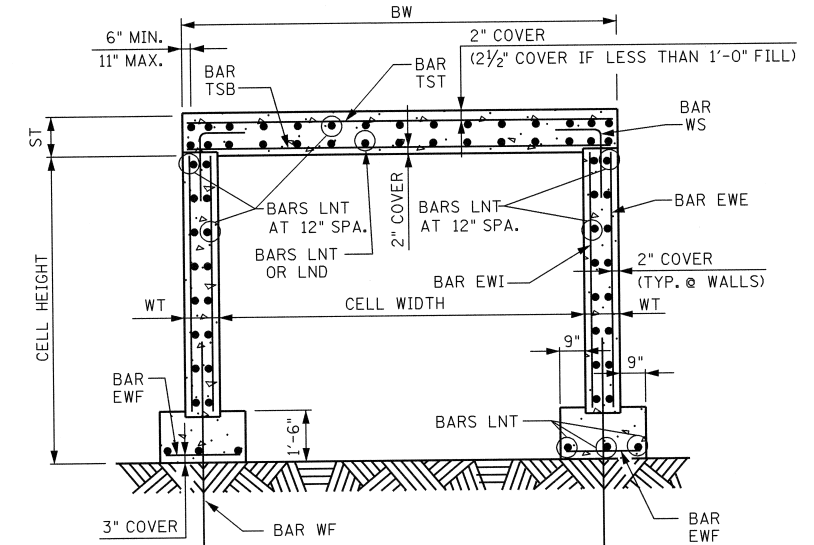
1 @ 10 x 10 REINFORCED CONCRETE SLAB BRIDGE

Table with columns: Fill Height ft., Dimensions (ST, WT, BW), Bars TST, Bars TSB, Bars EWE, Bars EWI, Bars LNT, Bars LND, Bars WS, Bars WF, Bars EWF, Concrete CY/LF, Reinf. Steel LB/LF. Rows include No Fill, 3, 5, 10, 20, 30, 40, 50, 60.

Note: Maximum fill height shown in the table is measured from the bottom of the top slab. To obtain the total fill height from the flow line, add the height of the box. Note: When height of fill above the top slab is less than 1 foot, the top mat of reinforcing in the top slab shall be constructed with 2-1/2 inches of concrete cover.

The following bar information applies to all fill cases in the tables above: Bars LNT Size = 4 Spacing = 12 in. Bars LND Size = 4 Spacing = 6 in. Bars WS Size = 8 Length = 5.00 ft. Spacing = 12 in. Bars WF Size = 8 Length = 6.00 ft. Spacing = 12 in. Bars EWF Size = 4 No. = 2 Spacing = 12 in.

Table with columns: PROJECT NO., YEAR, SHEET NO., and REVISIONS (NO., DATE, BY, BRIEF DESCRIPTION).



TYPICAL SECTION

NOTE: FOR DESCRIPTIONS OF BOX DIMENSIONS AND REINFORCING BAR DESIGNATIONS SEE STANDARD DRAWING NO. STD-17-5.

STATE OF TENNESSEE DEPARTMENT OF TRANSPORTATION STANDARD REINFORCED CONCRETE SLAB BRIDGE INTERIOR SECTION SPANS: 1 BARREL AT 10'-0" CLEAR HEIGHTS 7'-0" THRU 10'-0" 0' THRU 60' FILL 2010

CORRECT Edward P. Wasserman ENGINEER OF STRUCTURES

DESIGNED BY RLL/ALP DATE 12-09 DRAWN BY KEVIN MARTINKO DATE 1-10 SUPERVISED BY EPW/RLC DATE 12-09 CHECKED BY RLL/ALP DATE 2-10