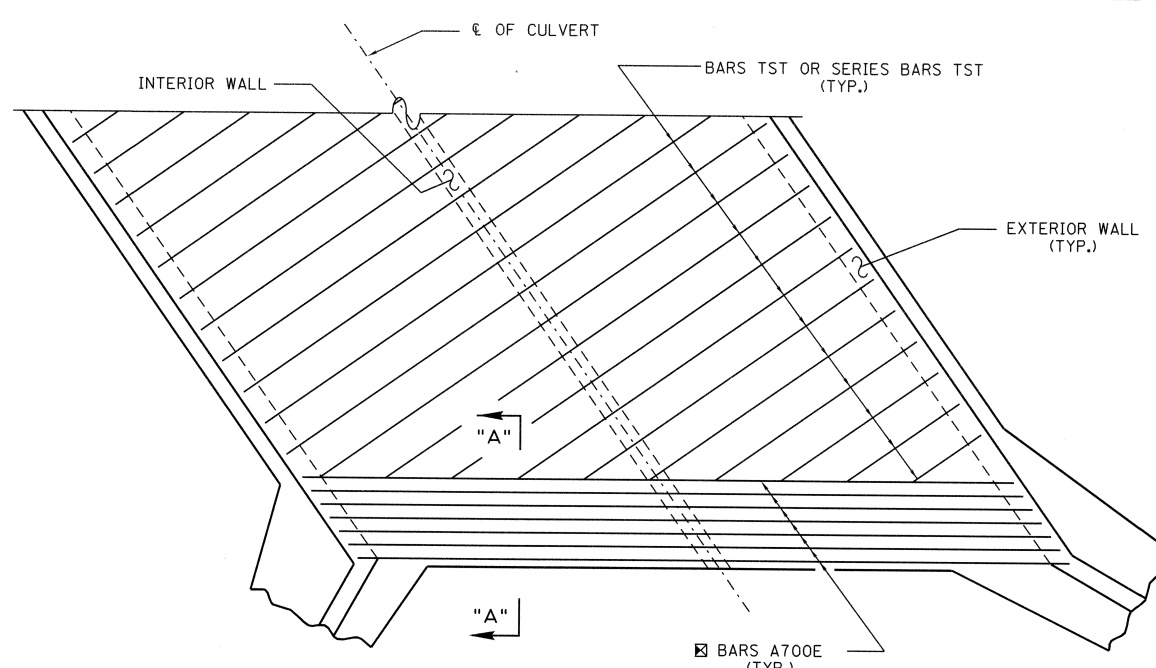


**PLAN VIEW**  
(BOTTOM MAT OF STEEL)

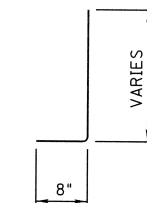


**PLAN VIEW**  
(TOP MAT OF STEEL)

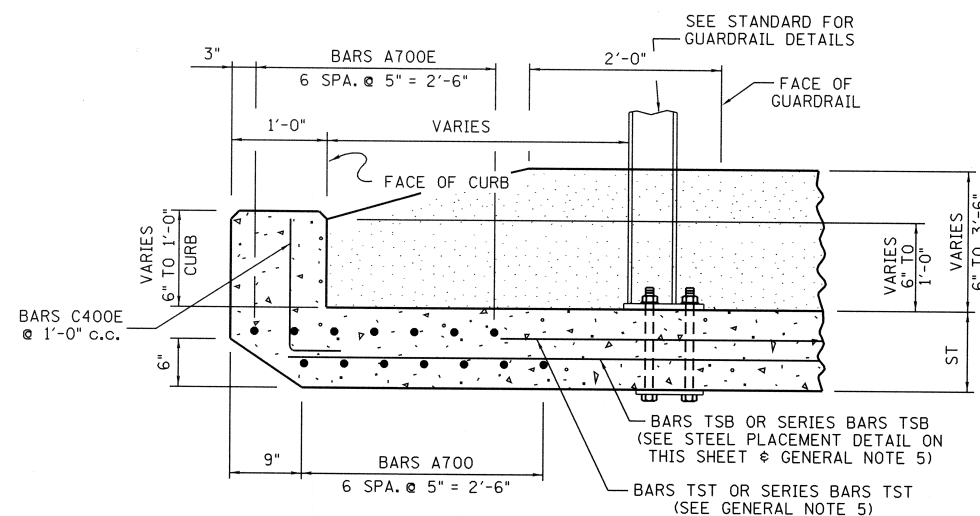
NOTE: BARS LNT OR LND NOT SHOWN.

NOTE: BARS A700E AND BARS A700 SHALL BE TWO SPLICED BARS WHEN BOX WIDTH (BW) IS GREATER THAN 60'-4".

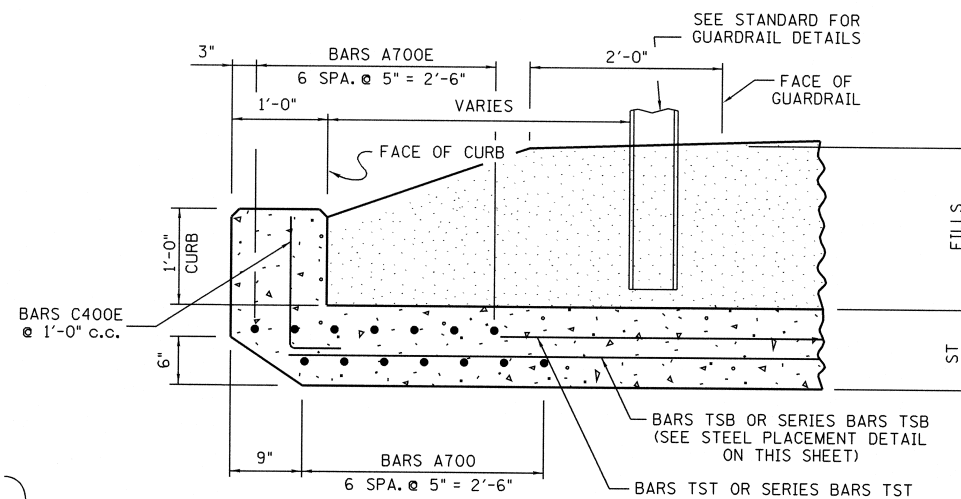
CONST. NO.			
PROJECT NO.	YEAR	SHEET NO.	
	2010		
REVISIONS			
NO.	DATE	BY	BRIEF DESCRIPTION



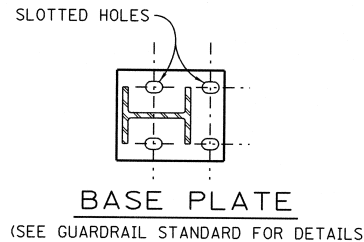
**BARS C400E**



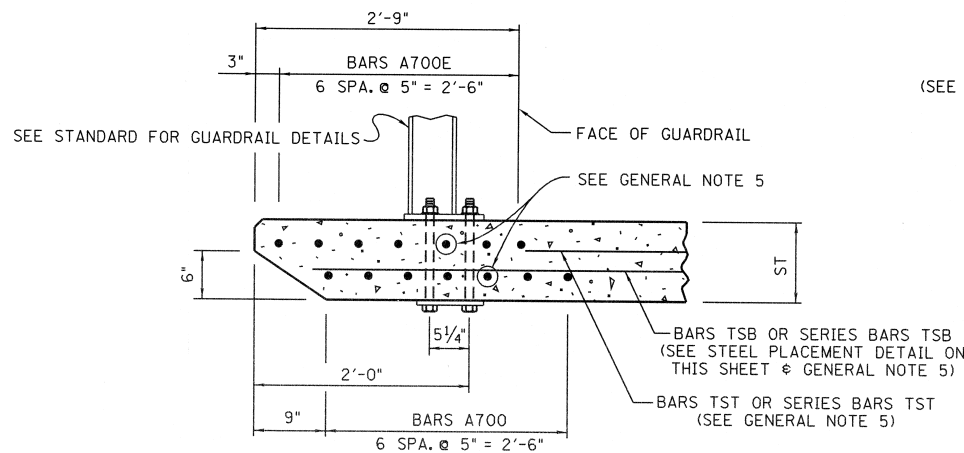
**SECTION "A-A"**  
(INLET END EDGE BEAM)  
(6" TO 3'-6" FILL)



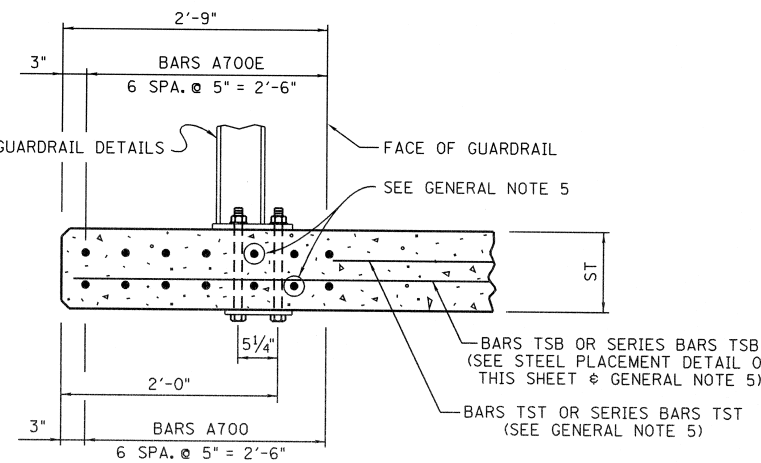
**SECTION "A-A"**  
(INLET END EDGE BEAM)  
(FILLS OVER 3'-6")



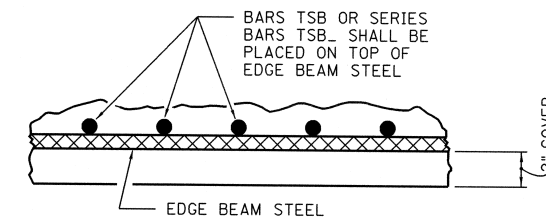
**BASE PLATE**  
(SEE GUARDRAIL STANDARD FOR DETAILS)



**SECTION "A-A"**  
(INLET END EDGE BEAM)  
(NO FILL)



**SECTION "A-A"**  
(OUTLET END EDGE BEAM)



**STEEL PLACEMENT DETAIL**

**GENERAL NOTES**

- NOTE: QUANTITIES WILL BE BASED ON PLANS DIMENSIONS, AS SHOWN ON THE FOLLOWING DRAWINGS: ROADWAY CULVERT SHEETS, THE CONCRETE BOX OR SLAB BRIDGE DRAWINGS DESIGNED FOR A SPECIFIC LOCATION, OR THE STANDARD BOX OR SLAB BRIDGE DRAWINGS.
- NOTE: ALL BARS "A" ARE STRAIGHT BARS.
- NOTE: SKEW ANGLES LESS THAN 45° REQUIRE SPECIAL DESIGN.
- NOTE: WHEN DEPTH OF FILL AT FACE OF GUARDRAIL EXCEEDS 3'-6" DELETE THE USE OF BOLTED BASE PLATES AND DRIVE THE POSTS.
- NOTE: ANY REINFORCING BAR THAT INTERFERES WITH THE FORMED HOLES FOR THE GUARDRAIL ANCHOR BOLTS SHALL BE MOVED HORIZONTALLY TO PROVIDE 1" MINIMUM CLEARANCE TO THE HOLE.

STATE OF TENNESSEE  
DEPARTMENT OF TRANSPORTATION

**CURB, RAIL AND  
EDGE BEAM DETAILS  
SKEW NOT LESS THAN 45°**

**STANDARD REINFORCED  
CONCRETE BRIDGE  
BOX AND SLAB TYPE**

2010

CORRECT *Edward P. Wasserman*  
ENGINEER OF STRUCTURES

DESIGNED BY: CMH / MAH DATE: 12-09  
DRAWN BY: DIANE BUSH DATE: 04-10  
SUPERVISED BY: RHL / JWP / MAH DATE: 12-09  
CHECKED BY: DATE:

D:\dgn\std\std172.dgn 12/12/09