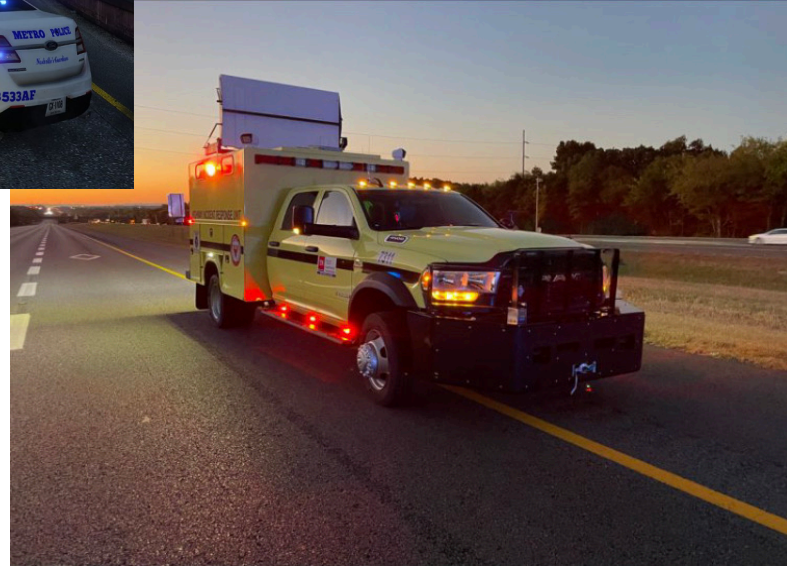




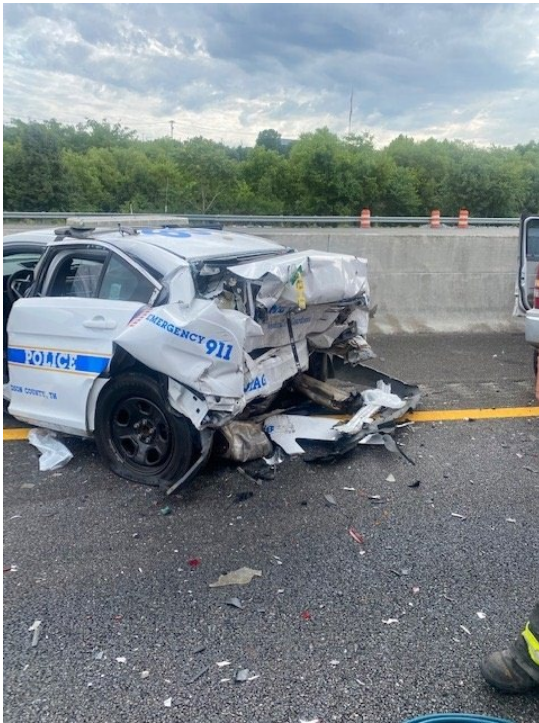
Crash Responder Safety

Errol J. Christos, MS
Occupational Health & Safety Division

Crash Responders



Crash(ed) Responders



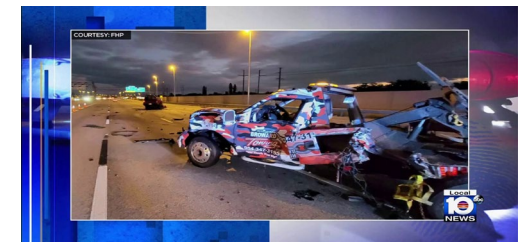
MNPD officer recovering after patrol car hit with him inside



Semi-truck hits parked firetruck on I-10 forcing firefighter over ledge of overpass

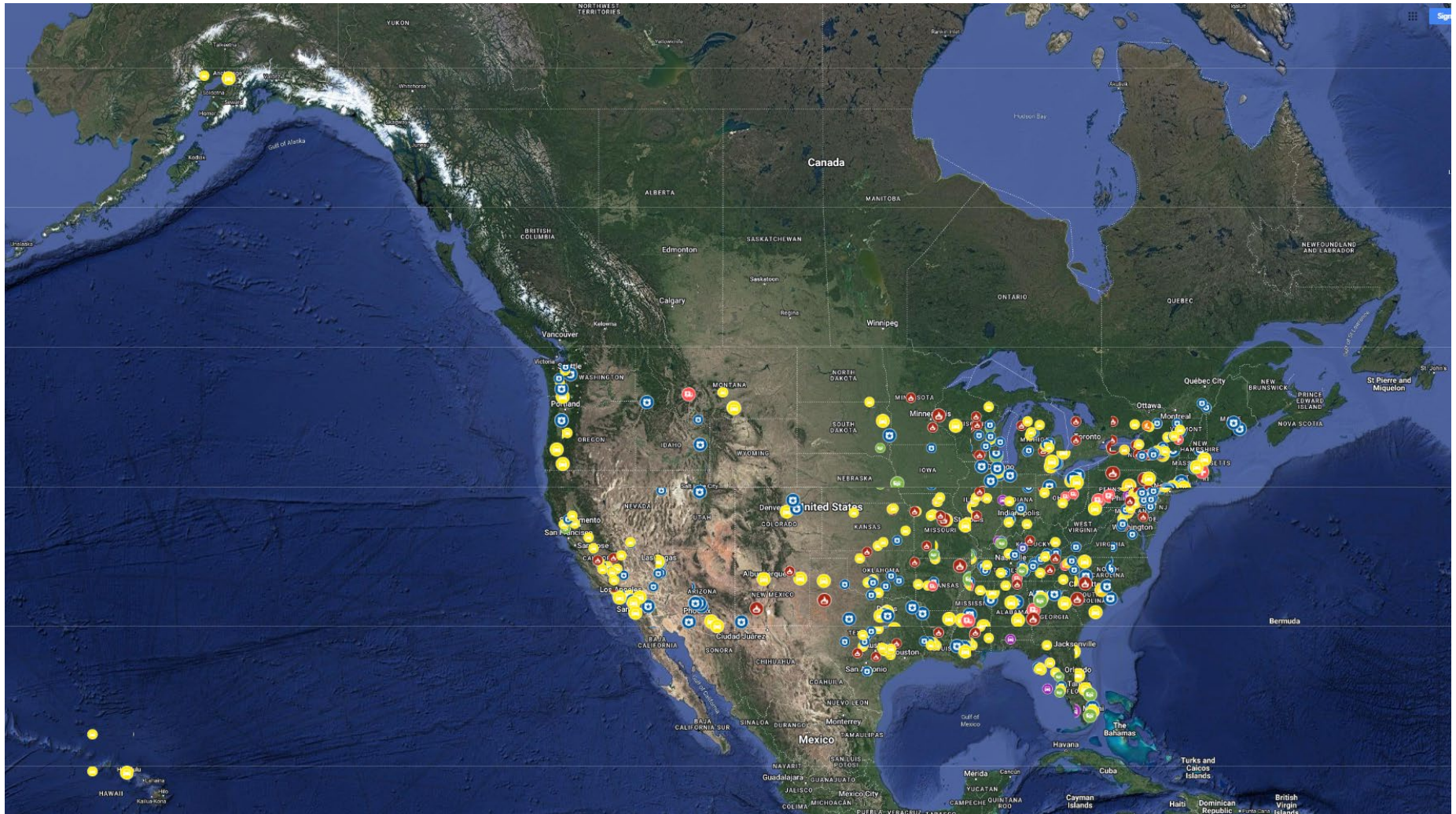


First responders renew ask for drivers to slow down, move over



Mother identifies tow truck driver hit, killed on Turnpike near Plantation

Crash Responder Line of Duty Deaths (since 2014)



Struck-By Fatalities

- **44 Fatal** [18 LEO, 9 Fire/EMS, 17 Tow]
 - 2019
- **46 Fatal** [17 LEO, 4 Fire/EMS, 22 Tow, 3 DOT/SSP]
 - 2020
- **65 Fatal** [30 LEO, 9 Fire/EMS, 24 Tow, 2 DOT/SSP]
 - 2021
- **41 Fatal** [14 LEO, 8 Fire/EMS, 18 Tow, 1 DOT/SSP]
 - 2022 (*November 10, 2022)



RESPONDERSAFETY
RESPONDERSAFETY.COM

Vulnerable Road Users

- Road users outside the car;
 - Those most at risk in traffic; and
 - Those unprotected by an outside shield.
-
- **Bipartisan Infrastructure Law**
 - Provides a historic opportunity for FHWA to work closely with state, local, and Tribal partners to put increased transportation funding to work incorporating safety for all users into every federally funded road project.
 - FHWA issued guidance for the Highway Safety Improvement Program, which received an additional \$4 billion in funding.
 - The law also created a new \$5 billion Safe Streets and Roads for All competitive grant program for local governments.

Reduction of Crash Responder Fatalities/Incidents

- Training and Collaboration
 - TIMS
- Protect-the-Queue Program (PTQ)
- Temporary Traffic Control (TTC)
- Vehicle Conspicuity and Lighting
- Personal Protective Equipment (PPE)
- You

Training

TIMS (Traffic Incident Management Safety)

- This course provides crash responders a shared understanding of the requirements for safe, quick clearance of traffic incident scenes; prompt, reliable and open communication; and motorist and responder safeguards.
- First responders learn how to operate more efficiently and collectively.



TIMS

- TIMS
 - Fundamentals and Terminology
 - Notification and Scene Size-Up
 - **Safe Vehicle Positioning**
 - **Scene Safety**
 - Command Responsibilities
 - **Traffic Management**
 - Special Circumstances
 - Clearance and Termination



Protect-the-Queue (PTQ)

- A queue is the line of vehicles that is slowed or stopped due to a work zone or road hazard.
- The purpose of PTQ is to make motorists approaching work zones and incidents aware that they need to **BE PREPARED TO STOP**.
- Queues present an increased risk to motorists and crash responders because of the speed differential between approaching traffic and traffic that is traveling through or stopped within the work zone or incident.



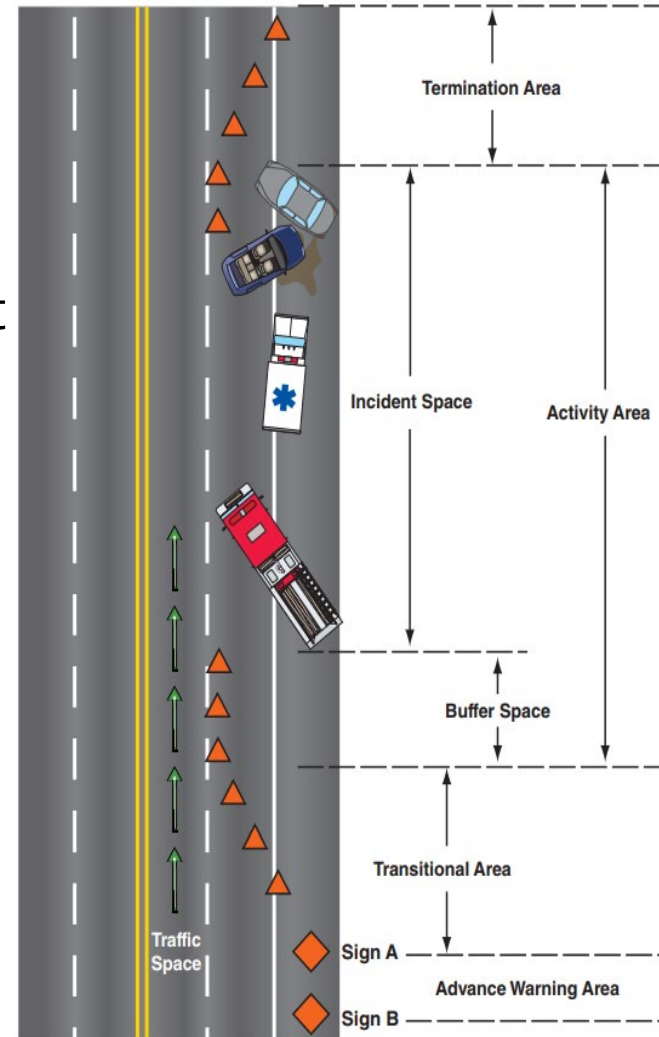
Accidents Happen Quickly



Temporary Traffic Control (TTC)

Manual on Uniform Traffic Control Devices (MUTCD)

- Chapter 6I
 - Control of Traffic Through Traffic Incident Management Areas



Vehicle Conspicuity and Lighting




Personal Protective Equipment

Hi-Vis
PPE




Start with YOU

PROTECT YOURSELF. PROTECT YOUR FAMILY.
Protect First Responders.



PUT DOWN YOUR PHONE. Don't call, text, take photos or livestream.
EYES ON THE ROAD. Hands on the wheel. Mind on the traffic.
MOVE OVER SLOW DOWN for stopped emergency vehicles.
FOLLOW all directions from traffic control signs, devices, and personnel.

Don't Drive Distracted

 **RESPONDERSAFETY**
Learning Network

For more information, visit: www.ResponderSafety.com & www.RSLN.org

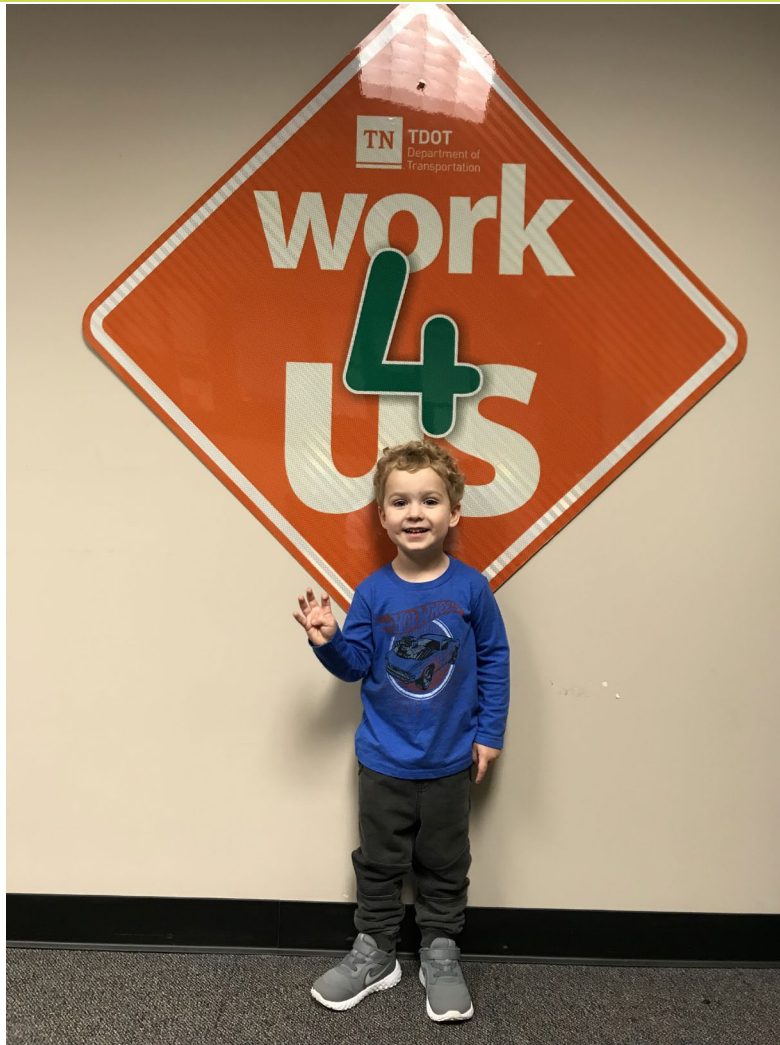
YOU



YOU



Be Safe 4 the Right Reasons





**Occupational Health &
Safety Division**