



# TITAN 2.0

## THE FUTURE IS NOW

FRANKLIN, TN

11.14.2023



# NEW FEATURES



Web-based  
Any Browser



Connectivity  
Required



Relaxed  
Validation  
Rules



Alcohol/Drug  
Pending Folder



# NEW FEATURES



Rejected  
Report Text  
Notification



Review  
Reminder Text  
– 30 min mark



No Software to  
Install



New Map-It  
functions &  
Dark Mode



# AUTOMATION & INTEGRATION



TN Driver System



TN Vehicle Registration System



Vehicle Insurance Information



EasyStreetDraw 7.5 Web Version



# ENHANCED ACCESS TO REPORTS

**User  
Access to  
Previous  
Reports**

**Supervisor  
Access to  
Previous  
Reports**

**Start on One  
Device, Finish on  
Another**

**Only 3  
Required  
Fields to Start  
a Report**

**Fill Out  
Report in  
Any Order**

# SUBMISSIONS

Crash Reports  
Originally Submitted in  
the TITAN Client, must  
still be amended in the  
TITAN client.

Crash Reports  
Originally Submitted in  
TITAN 2.0, are only  
accessible in TITAN  
2.0.

# ADOPTION

When you are ready to begin submitting crash reports in 2.0, we just need an email from your agency's representative to indicate you are ready for activation.



When possible, we'd like to manage the transition so you don't have officers submitting new crash reports through both client and 2.0 at the same time, with the exception of previously submitted reports that need to be amended.

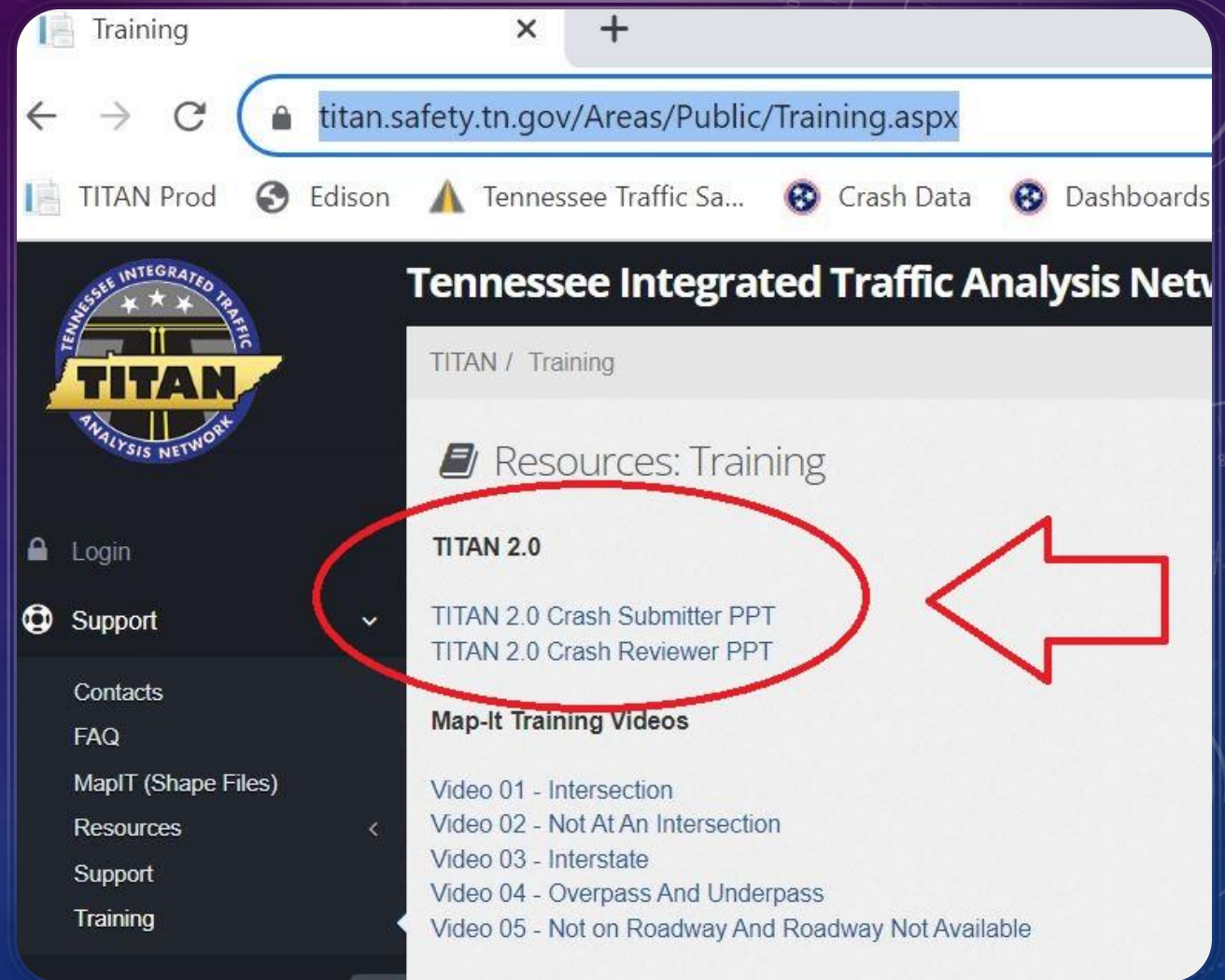
# TRAINING OPPORTUNITIES

- In-person Train-the-Trainer training is available now upon request. Working on scheduling Cheatham County and Red Bank.
- Virtual Training sessions will be added to the calendar for December.
- Classes are posted on the [www.tntrafficsafety.org](http://www.tntrafficsafety.org) web site. Please register.



# OTHER INFORMATION

[https://titan.safety.tn.gov/Areas/  
Public/Training.aspx](https://titan.safety.tn.gov/Areas/Public/Training.aspx)



Training

titan.safety.tn.gov/Areas/Public/Training.aspx

TITAN Prod Edison Tennessee Traffic Sa... Crash Data Dashboards

**Tennessee Integrated Traffic Analysis Network**

TITAN / Training

Resources: Training

**TITAN 2.0**

- TITAN 2.0 Crash Submitter PPT
- TITAN 2.0 Crash Reviewer PPT

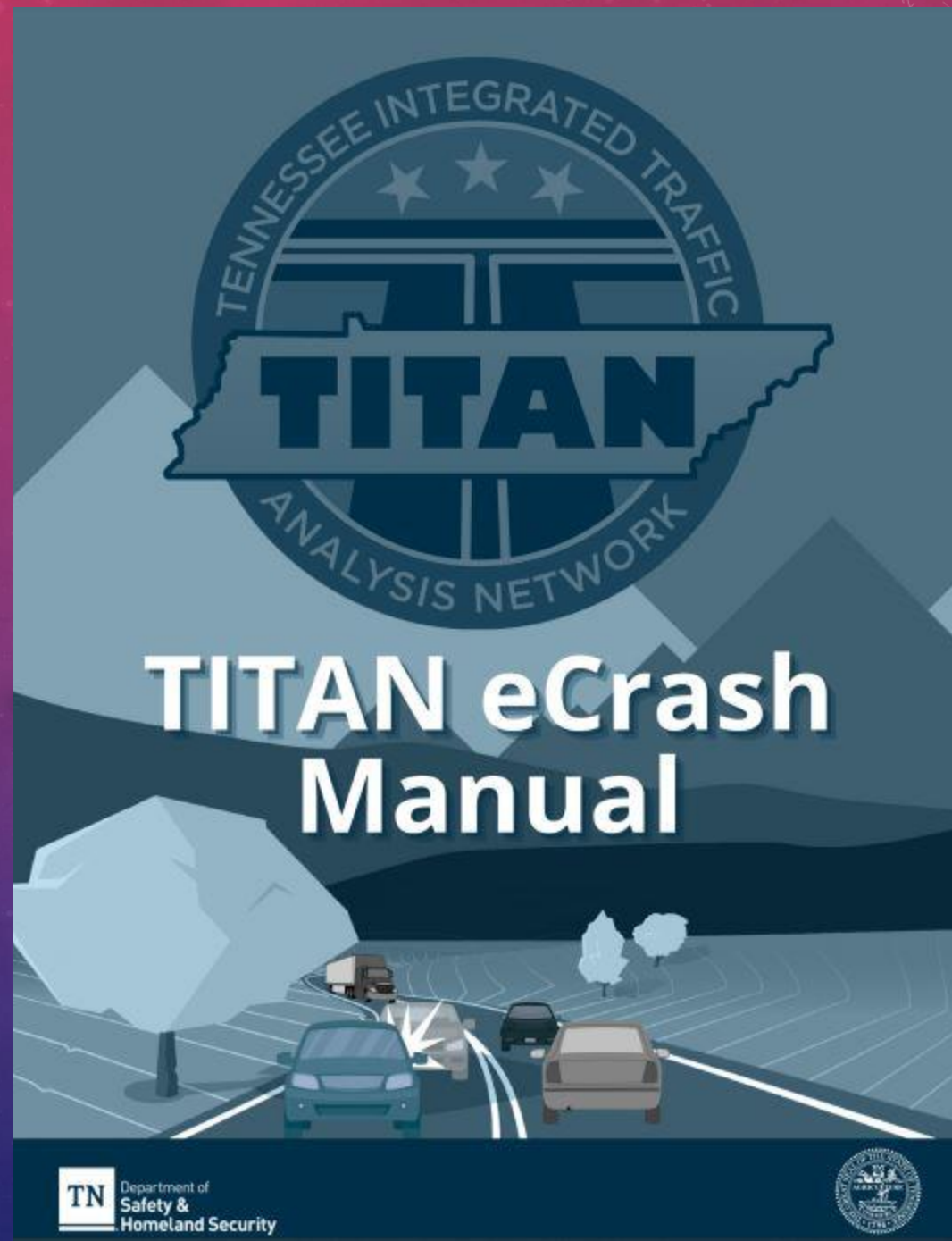
**Map-It Training Videos**

- Video 01 - Intersection
- Video 02 - Not At An Intersection
- Video 03 - Interstate
- Video 04 - Overpass And Underpass
- Video 05 - Not on Roadway And Roadway Not Available

Navigation menu (left): Login, Support, Contacts, FAQ, MapIT (Shape Files), Resources, Support, Training

**\*ALL NEW,  
Coming Soon!\***

**TITAN 2.0  
eCrash Manual**



# OTHER INFORMATION

- Hypothermia and Hyperthermia Deaths
- Possible Future integration with AASHTOWare

# CRASH STATISTICS



- Statistical Requests, High Crash Locations
- Reach Out for Assistance, we have Statistical Analysts who can help you research, or confirm your search results
- Tableau Dashboards Publicly Available at: <https://www.tn.gov/content/tn/safety/stats/dashboards.html>

The background features a gradient from red at the top to blue at the bottom, overlaid with a field of small white stars. Technical graphics include a large circular scale on the right with numerical markings from 80 to 220, and several circular arrows indicating clockwise and counter-clockwise directions.

What can the TITAN Team do to assist you?



THANK YOU!

[CHRISTOPHER.OSBOURN@TN.GOV](mailto:CHRISTOPHER.OSBOURN@TN.GOV)

615.290.6560 (CELL)

[TITAN.SAFETY@TN.GOV](mailto:TITAN.SAFETY@TN.GOV)