



# Tennessee Education Lottery Scholarship Program

Annual Report

Recipient Outcomes  
through Fall 2018



# 2018-19 Tennessee Higher Education Commission Members

Mr. Evan Cope, **Chair**, Murfreesboro (Middle Tennessee)

Dr. Nancy Dishner, Jonesborough (East Tennessee)

Mr. Jimmy Johnston, Gallatin (Middle Tennessee)

Ms. Pam Koban, Nashville (Middle Tennessee)

Mr. Jay Moser, Jefferson City (East Tennessee)

Mr. Vernon Stafford, Jr., **Vice Chair**, Memphis (West Tennessee)

Mr. Frank L. Watson, Jr., Memphis (West Tennessee)

Mayor A C Wharton, Jr., **Secretary**, Memphis (West Tennessee)

Ms. Dakasha Winton, Chattanooga (East Tennessee)

Mr. Tre Hargett, Secretary of State

Mr. David H. Lillard, Jr., State Treasurer

Mr. Justin P. Wilson, State Comptroller

Dr. Sara Morrison, Executive Director, State Board of Education, non-voting ex-officio

Ms. Celeste Riley, University of Memphis, Memphis, voting student member

# Overview of Report

This report is prepared pursuant to T.C.A. §49-4-903(b), which directs the Tennessee Higher Education Commission (THEC) to:

*“...provide assistance to the general assembly and to the Tennessee Student Assistance Corporation (TSAC) by researching and analyzing data concerning the scholarship and grant programs created under this part, including, but not limited to, student success and scholarship retention.”*

The Tennessee Education Lottery Scholarship (TELS) program was designed to meet the unique needs of the State of Tennessee, while also incorporating the hallmark elements of existing merit-based aid programs in other states. Developed through a process involving elected officials and members of the academic community, the TELS program aims to address the following broad public policy objectives:

- Improve academic achievement in high school through scholarship incentive (GAMS, HOPE, Aspire);
- Provide financial assistance as a means of promoting access to higher education (Aspire, Access);
- Retain the state’s “best and brightest” students in Tennessee colleges and universities (GAMS); and
- Enhance and promote economic and community development through workforce training (Wilder-Naifeh).

# Table of Contents

	Figure/Table	Page
Technical Notes and Definitions		i
Privacy Notice		i
Executive Summary		ii
<b>Section I: Program Overview</b>		<b>1</b>
TELS Eligibility Criteria	Table 1	2
Major Legislative Changes in TELS Program, 2004 to Present	Table 2	3
Scholarship Recipients and Dollars Awarded by Program, 2013-14 to 2018-19	Table 3	4
Max HOPE Award as a Percent of Average Tuition & Fees, Public Institutions	Table 4	5
Max HOPE Award as a Percent of Average Tuition & Fees, Public Institutions	Figure 1	5
Distribution of Scholarship Recipients and Dollars by System, 2013-14 to 2018-19	Table 5	6
Distribution of First-Time Scholarship Recipients by System and Program, Fall 2018	Table 6	7
Distribution of All Scholarship Recipients by System and Program, Fall 2018	Table 7	7
Distribution of First-time Scholarship Recipients by Scholarship Type, Fall 2013 - Fall 2018	Figure 2	8
First-time Scholarship Recipients as a Percent of All FTF by System, Fall 2013 - Fall 2018	Table 8	9
<b>Section II: Recipient Demographics</b>		<b>10</b>
Lottery Scholarship Receipt by Gender and Race, Fall 2013 - Fall 2018	Table 9	11
Lottery Scholarship Receipt by Family Adjusted Gross Income, Fall 2018	Figure 3	11
Median Family AGI of First-time TELS Recipients by Race, Fall 2013 - Fall 2018	Figure 4	12
Percent of First-time TELS Recipients Eligible for a Pell Grant, Fall 2013 - Fall 2018	Table 10	13
Percent of First-time TELS Recipients Receiving TSAA, Fall 2013 - Fall 2018	Table 11	13
Percent of First-time TELS Recipients, Parent with Degree, Fall 2013 - Fall 2018	Table 12	14
Academic Profile of First-time TELS Recipients, Fall 2015 - Fall 2018	Table 13	15
<b>Section III: Scholarship Renewal</b>		<b>16</b>
Renewal Requirements		17
One-year Scholarship Renewal Rates by Scholarship Type and System, Fall 2017	Table 14	18
One-year Renewal Rates by Gender, Race, and Scholarship Type, Fall 2017	Table 15	19
One-year Renewal Rates by AGI and Scholarship Type, Fall 2017	Table 16	19
One-year Renewal Rates by ACT Score and High School GPA, Fall 2017	Table 17	20
<b>Section IV: Postsecondary Retention for Scholarship Non-Renewals</b>		<b>21</b>
Retention Rate of Non-Renewals by System, Fall 2013 - Fall 2017	Table 18	22
Retention Rate of Non-Renewals by Scholarship Type, Fall 2013 - Fall 2017	Table 19	22
Retention Rate of Non-Renewals by AGI and Scholarship Type, Fall 2017	Table 20	23
<b>Section V: Five-Year Graduation Rates with TELS Intact</b>		<b>24</b>
Five-year Grad Rate with TELS Intact by System, Fall 2010 - Fall 2013	Table 21	25
Five-year Grad Rate with TELS Intact by Scholarship Type, Fall 2010 - Fall 2013	Figure 5	26
Five-year Grad Rate with TELS Intact by Gender and Race/Ethnicity, Fall 2010 - Fall 2013	Table 22	27
Five-year Grad Rate with TELS Intact by ACT and High School GPA, Fall 2013	Table 23	28

<b>Section VI: Six-Year Graduation Rates of TELS Recipients</b>		<b>29</b>
Six-year Grad Rate of TELS Recipients by System, Fall 2010 - Fall 2012	Figure 6	30
Six-year Grad Rate of TELS Recipients by Scholarship Type, Fall 2010 - Fall 2012	Figure 7	31
Six-year Grad Rate of TELS Recipients by Gender and Race/Ethnicity, Fall 2010 - Fall 2012	Table 24	32
<b>Section VII: Scholarship Renewal, Retention, and Graduation Rates Over Time</b>		<b>33</b>
Scholarship Renewal, Postsecondary Retention, and Grad Rates, Fall 2013 - Fall 2017	Table 25	34
Scholarship Renewal, Postsecondary Retention, and Grad Rates, Fall 2012	Figure 8	35
Four, Five, and Six-year Grad Rates by Scholarship Type and System, Fall 2010 - Fall 2012	Table 26	36
Scholarship Renewal and Grad Rates by AGI, Fall 2012	Table 27	38
Scholarship Renewal, Retention, and Grad Rates by Scholarship Type, Fall 2012 - Fall 2017	Table 28	39
Scholarship Renewal, Retention, and Grad Rates by System, Fall 2012 - Fall 2017	Table 29	40
<b>Appendices</b>		<b>41</b>
Percentage of Public Freshmen with a Lottery Scholarship, Fall 2015 - Fall 2018	Appendix A	42
TELS Receipt by Scholarship Type and Institution, Fall 2018	Appendix B	43
TELS Receipt by Gender and Institution, Fall 2018	Appendix C	45
TELS Receipt by Race/Ethnicity and Institution, Fall 2018	Appendix D	47
TELS Receipt by AGI and Institution, Fall 2018	Appendix E	49

## Technical Notes & Definitions

- Unless otherwise noted, data contained within this report are from the Tennessee Student Assistance Corporation (TSAC) e\*GRandS system, the Tennessee Higher Education Commission's (THEC) Student Information System (SIS), and the P20 Connect Data System.
- The current report uses TSAC verified e\*GRandS data to determine all TELS-eligible students and is supplemented with THEC and P20 Connect data, where applicable (e.g., graduation data).
- The P20 Connect Data System was used as an additional source to match retention and graduation data. This is most useful in the case of students enrolled at Tennessee's Independent Colleges and Universities (TICUA institutions). Only select TICUA institutions participate in the P20 Connect, however, so this is not a complete picture of private school retention or completion.
- Twenty private institutions submit data to P20 Connect: Aquinas College, Bethel University, Carson-Newman University, Christian Brothers University, Cumberland University, Fisk University, Johnson University, Lane College, Lee University, Lipscomb University, Martin Methodist University, Maryville College, Memphis College of Art, Milligan College, Rhodes College, Tennessee Wesleyan College, Trevecca Nazarene University, Tusculum College, Union University, and Watkins College of Art, Design, and Film.
- Students are identified by higher education sector and scholarship type **at college entry**, unless otherwise noted.
- Students with inadmissible or missing data values are reported in the Unknown category.
- Unless otherwise noted, all tables and figures include Locally Governed Institutions (LGIs), TBR Community Colleges, UT Campuses, and private institutions, and HOPE, GAMS, Aspire, and Access programs.
- The "6-year graduation rate" is defined as the percent of TELS first-time freshmen who attained either an associate or bachelor's degree within six years of enrollment regardless of scholarship status at graduation.
- The "graduation rate with TELS intact" is defined as the percent of TELS first-time freshmen who attained either an associate or bachelor's degree within five years of enrollment without losing scholarship eligibility (having the scholarship intact in the fall semester prior to graduation). Five years is chosen for this statistic because that is the maximum number of years for which students can renew a scholarship.
- Renewal, retention, and graduation rates are attributed to the higher education sector and scholarship type at college entry.
- Percentages may not add to 100 percent due to rounding.

## Privacy Notice

Throughout this report, THEC complies with Family Educational Rights and Privacy Act (FERPA) requirements to protect students' personally identifiable information. Therefore, when tables are presented, **individual cells containing five or fewer observations are suppressed**. The suppressed information is included in table totals.

## Executive Summary

- Over 147,000 students received Tennessee’s Education Lottery Scholarship awards in 2018-19, totaling \$393 million in scholarship dollars.
- The HOPE Scholarship remains the most common award type (Table 3) and community colleges remain the most highly attended system among all scholarship recipients. Recipients attending community colleges also receive the greatest share of scholarship dollars (Table 5).
- TELS recipient demographics remained relatively constant, with no notable shifts based on gender, race/ethnicity, family adjusted gross income (AGI), or Pell eligibility among first-time freshmen. Lottery scholarships are awarded at the highest rates among students who are female (58 percent), white (77 percent), and whose families AGI exceeds \$96,000 (33 percent) (Tables 9 and 10 and Figure 3).
- The GAMS and HOPE scholarships are renewed at the highest rates, 90 percent and 58 percent, respectively (Table 14). Female students renew scholarships at higher rates than males, as do white students relative to non-white students (Table 15). Scholarship renewal rates increase with ACT Composite Score and High School GPA (Table 17).
- Students who lost scholarship eligibility during their freshman year remained enrolled most often at UT campuses (73 percent), were GAMS recipients (63 percent), or belonged to families whose AGI exceeds \$96,000 (64 percent) (Tables 18, 19, and 20).
- Students who enter college with a combination of a high GPA and ACT composite have a greater likelihood of graduating with their scholarship intact (Table 23).
- The average six-year graduation rate among TELS recipients, varies by scholarship type (initial receipt), with the overall graduation rate at 61% (Figure 7).



# Section I

---

## Program Overview

**Table 1**  
**Tennessee Education Lottery Scholarship Eligibility Criteria, 2018-19**

	<b>HOPE (base)</b>	<b>GAMS (HOPE with merit supplement)</b>	<b>Aspire (HOPE with need supplement)</b>	<b>Access</b>
<b>Eligibility Criteria</b>				
<b>Minimum High School GPA</b>	3.00	3.75	3.00	2.75-2.99
<b>Minimum ACT Composite</b>	<u>or</u> 21	<u>and</u> 29	<u>or</u> 21	<u>and</u> 18-20
<b>Family Adjusted Gross Income (AGI)</b>	N/A	N/A	\$36,000 or less	\$36,000 or less
<b>Postsecondary Retention GPA</b>	Traditional Path - Cumulative 2.75 at 24 & 48 hours, cumulative 3.0 at 72, 96, 120 hours			Cumulative 2.75 at 24 hours qualifies the student for HOPE
	Provisional Path - Cumulative 2.75-2.99 at 72, 96, 120 hours with 3.0 prior semester			
<b>Award Amounts: Students who First Received HOPE in Fall 2009 through Summer 2015</b>				
<b>4-year Institution*</b>	\$6,000	\$7,500	\$8,250	\$4,125
<b>2-year Institution*</b>	\$3,000	\$4,500	\$5,250	\$2,625
<b>Updated Award Amounts: Beginning Fall 2015</b>				
<b>4-yr: Freshman and Sophomore</b>	\$5,250	\$6,750	\$7,500	\$3,750
<b>4-yr: Junior and Senior</b>	\$6,750	\$8,250	\$9,000	-
<b>2-yr: Freshman and Sophomore</b>	\$4,500	\$6,000	\$5,250	\$2,625

\*Award amount is divided equally over fall, spring, and summer semesters.

**Table 2**  
**Major Legislative Changes in Tennessee Education Lottery Scholarship Program, 2004 to Present**

<b>Legislative Changes</b>
2004
HOPE base set at \$3,000/1,500 HOPE Access set at \$2,000/1,250 HOPE stipend Aspire set at \$1,000 GAMS stipend set at \$1,000 Wilder-Naifeh set at \$1,250 ACT requirement increased to 21 (applicable to fall 2005 freshmen and after)
2005
HOPE base increased to \$3,300/1,650 HOPE Access increased to \$2,400/1,575 HOPE Aspire stipend increased to \$1,500 Wilder-Naifeh increased to \$1,300 Created Dual Enrollment Grant, HOPE Foster Child Tuition Grant, and Nontraditional Student Award
2006
HOPE base increased to \$3,800/1,900 and HOPE Access increased to \$2,650/1,700 Wilder-Naifeh increased to \$1,500
2007
HOPE base increased to \$4,000/2,000 and HOPE Access increased to \$2,750/1,750 Wilder-Naifeh increased to \$2,000 Created Math & Science Teacher's award
2008
Reduced 48 hour GPA to 2.75 Created Provisional Track for retaining award Expanded Nontraditional Student provision Eliminated 120 hour limitation Created Helping Heroes Grant and Tennessee Rural Health Loan Forgiveness
2011
Reinstated 120 hour limitation and expanded scholarship to cover summer enrollments of six credits or more; both provisions applicable only for the beginning cohorts of fall 2009 and after
2012
Increased statutory General Shortfall Reserve minimum balance to \$100M
2013
Created STEP UP Scholarship for students with disabilities and set award at \$4,000
2014
Created Tennessee Promise and TCAT Reconnect Increased statutory General Shortfall Reserve minimum balance to \$110M
2015
Tennessee Promise and TCAT Reconnect take effect Created Community College Reconnect Grant Pilot HOPE base decreases to \$3,500 for freshmen and sophomores, increases to \$4,500 for juniors and seniors HOPE award for full-time community college students will increase to \$3,000
2016
Expanded eligibility criteria for the Community College Reconnect Grant Pilot
2017
Created Community College Reconnect Grant Program Created Middle College Scholarship Program
2018
Tennessee Reconnect launched Middle College Scholarship launched Eliminated Non-Traditional HOPE at associate degree level TELS Report due annually on October 1st
<b>2019</b>
Increased semester award for the Tennessee Middle College Scholarship from \$600 to \$1,000. Expanded the Dual Enrollment Grant maximum from 8 courses to 10 courses. (takes effect fall 2020) Created the Governor's Investment in Vocational Education (GIVE) which expands the Dual Enrollment Grant to cover 4 high-need CTE courses (takes effect fall 2020)

**Table 3**  
**Scholarship Recipients and Dollars Awarded by Scholarship Program, 2013-14 to 2018-19**

	2013-14		2014-15		2015-16	
	Students	Dollars	Students	Dollars	Students	Dollars
HOPE	43,518	\$149,474,277	44,531	\$152,164,923	45,951	\$154,071,603
GAMS	6,280	\$30,593,032	6,580	\$32,119,218	6,724	\$32,124,548
Aspire	18,674	\$88,535,775	18,177	\$86,102,591	18,028	\$82,538,594
<b>Subtotal (HOPE, GAMS, Aspire)</b>	<b>68,472</b>	<b>268,603,084</b>	<b>69,288</b>	<b>270,386,732</b>	<b>70,703</b>	<b>\$268,734,745</b>
Tennessee Promise*	-	-	-	-	8,830	\$15,247,208
Tennessee Reconnect	-	-	-	-	-	-
TCAT Reconnect	-	-	-	-	1,547	\$1,413,135
HOPE Access Grant	405	\$838,911	367	\$733,357	381	\$662,503
HOPE Non-Traditional	3,581	\$9,371,969	2,842	\$7,409,032	2,182	\$5,727,630
Wilder-Naifeh Grant	9,657	\$11,801,032	9,143	\$11,492,150	11,576	\$14,870,504
HOPE Foster Care Grant	72	\$433,566	78	\$455,408	78	\$463,383
Dual Enrollment Grant	20,594	\$11,823,314	21,745	\$12,630,700	24,671	\$15,919,839
Middle College Scholarship	-	-	-	-	-	-
Math & Science Teachers	6	\$12,000	3	\$6,000	2	\$4,000
Helping Heroes Grant	478	\$745,154	493	\$749,000	486	\$734,250
Rural Health Loan Forgiveness	0	\$0	0	\$0	0	\$0
TN STEP UP	-	-	65	\$229,000	98	\$339,000
<b>Total</b>	<b>103,265</b>	<b>\$303,629,030</b>	<b>105,345</b>	<b>\$304,091,379</b>	<b>120,554</b>	<b>\$324,116,197</b>

	2016-17		2017-18		2018-19	
	Students	Dollars	Students	Dollars	Students	Dollars
HOPE	46,649	\$156,629,514	46,923	\$160,830,042	47,817	\$166,366,355
GAMS	7,186	\$33,766,172	7,677	\$36,859,894	8,228	\$40,298,209
Aspire	18,025	\$81,148,692	18,848	\$86,126,567	18,027	\$84,255,962
<b>Subtotal (HOPE, GAMS, Aspire)</b>	<b>71,860</b>	<b>271,544,378</b>	<b>73,448</b>	<b>283,816,503</b>	<b>74,072</b>	<b>\$290,920,526</b>
Tennessee Promise*	13,699	\$ 25,221,789	15,118	\$28,131,175	15,341	\$28,836,007
Tennessee Reconnect	-	-	-	-	12,382	\$29,651,193
TCAT Reconnect	1,687	\$1,674,304	1,556	\$1,615,882	1,644	\$1,835,756
HOPE Access Grant	366	\$649,738	415	\$780,432	328	\$604,006
HOPE Non-Traditional	1,639	\$4,485,694	1,318	\$3,866,625	812	\$2,629,050
Wilder-Naifeh Grant	11,167	\$14,299,872	10,791	\$13,780,069	11,239	\$14,379,287
HOPE Foster Care Grant	74	\$450,307	80	\$552,517	87	\$572,824
Dual Enrollment Grant	26,512	\$19,322,289	28,761	\$21,503,169	30,937	\$23,060,224
Middle College Scholarship	-	-	-	-	149	\$163,200
Math & Science Teachers	2	\$4,000	2	\$4,000	1	\$2,000
Helping Heroes Grant	499	\$770,500	419	\$644,500	424	\$667,000
Rural Health Loan Forgiveness	0	\$0	0	\$0	0	\$0
TN STEP UP	130	\$410,563	118	\$405,375	118	\$401,750
<b>Total</b>	<b>127,635</b>	<b>\$338,833,434</b>	<b>132,026</b>	<b>\$355,100,244</b>	<b>148,743</b>	<b>\$393,722,823</b>

Source: Tennessee Student Assistance Corporation (TSAC) year-end reports.

Notes: \* indicates a distinct count of individuals receiving award dollars from grant programs

**Table 4**

**Maximum HOPE Award Amount as a Percent of Average Tuition and Fees at Public Institutions, 2004-05 to 2018-19**

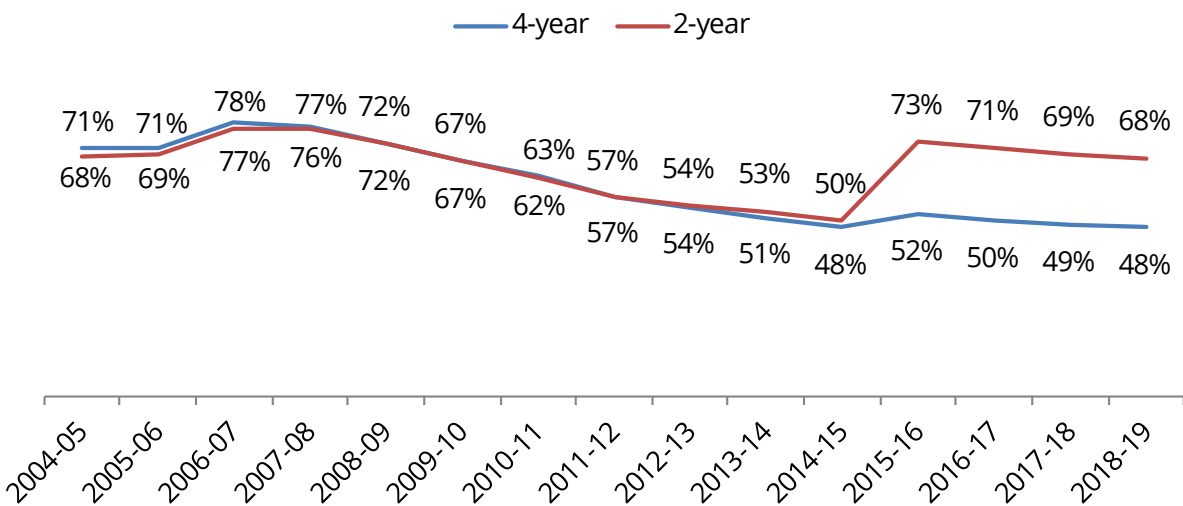
Year	HOPE Max Award		Avg Tuition & Fees		HOPE Coverage Rate	
	4-year	2-year	4-year	2-year	4-year	2-year
2004-05	3,000	1,500	4,214	2,193	71%	68%
2005-06	3,300	1,650	4,649	2,393	71%	69%
2006-07	3,800	1,900	4,841	2,482	78%	77%
2007-08	4,000	2,000	5,227	2,628	77%	76%
2008-09	4,000	2,000	5,524	2,773	72%	72%
2009-10	4,000	2,000	5,926	2,968	67%	67%
2010-11	4,000	2,000	6,358	3,211	63%	62%
2011-12	4,000	2,000	6,979	3,532	57%	57%
2012-13	4,000	2,000	7,406	3,686	54%	54%
2013-14	4,000	2,000	7,833	3,787	51%	53%
2014-15	4,000	2,000	8,335	3,992	48%	50%
2015-16	4,500	3,000	8,625	4,121	52%	73%
2016-17	4,500	3,000	8,979	4,226	50%	71%
2017-18	4,500	3,000	9,233	4,335	49%	69%
2018-19	4,500	3,000	9,403	4,444	48%	68%
<b>Compound Annual Growth Rate</b>	<b>2.9%</b>	<b>5.1%</b>	<b>5.9%</b>	<b>5.2%</b>		

Notes:

- "Average Tuition and Fees" is an unweighted average of resident tuition and fees for full-time undergraduate students at public institutions.
- This table does not include the HOPE award or tuition and fees for the summer semester.
- Compound Annual Growth Rate is for 2004-05 to 2018-19.

**Figure 1**

**Maximum HOPE Award Amount as a Percent of Average Tuition and Fees at Public Institutions, 2004-05 to 2018-19**



Notes:

- "Average Tuition and Fees" is an unweighted average of resident tuition and fees for full-time undergraduate students at public institutions.
- This figure does not include the HOPE award or tuition and fees for the summer semester.
- The increase in "buying power" between 2014-15 and 2015-16 at community colleges can be explained by the change in HOPE award amounts in 2015-16.

## Table 5

### Distribution of Scholarship Recipients and Dollars by System, 2013-14 to 2018-19

		Students		Allocations	
		Number	Percent	Dollars	Percent
2013-14	UT System	20,912	20%	\$86,551,347	29%
	LGIs	27,170	26%	\$107,413,986	35%
	TBR 2-Year	28,809	28%	\$36,282,228	12%
	Independents	15,533	15%	\$58,963,244	19%
	TCATs	11,626	11%	\$12,575,471	4%
	Proprietary Institutions	594	1%	\$1,842,754	1%
	<b>Total*</b>	<b>103,265</b>	<b>101%</b>	<b>\$303,629,030</b>	<b>100%</b>
2014-15	UT System	20,743	20%	\$86,789,917	29%
	LGIs	27,361	26%	\$107,618,914	35%
	TBR 2-Year	30,132	29%	\$38,342,353	13%
	Independents	15,163	14%	\$57,481,751	19%
	TCATs	11,614	11%	\$12,453,148	4%
	Proprietary Institutions	332	0.3%	\$1,405,296	0.5%
	<b>Total*</b>	<b>105,345</b>	<b>100%</b>	<b>\$304,091,379</b>	<b>100%</b>
2015-16	UT System	20,589	17%	\$82,604,095	25%
	LGIs	27,108	22%	\$100,900,723	31%
	TBR 2-Year	40,521	33%	\$65,788,041	20%
	Independents	15,723	13%	\$54,992,083	17%
	TCATs	17,067	14%	\$18,390,277	6%
	Proprietary Institutions	387	0.3%	\$1,440,978	0.4%
	<b>Total*</b>	<b>121,135</b>	<b>100%</b>	<b>\$324,116,197</b>	<b>100%</b>
2016-17	UT System	20,919	16%	\$81,439,895	24%
	LGIs	28,438	22%	\$102,513,963	30%
	TBR 2-Year	45,259	35%	\$80,286,290	24%
	Independents	16,387	13%	\$54,864,607	16%
	TCATs	17,496	14%	\$18,556,012	5%
	Proprietary Institutions	326	0.3%	\$1,172,667	0.3%
	<b>Total*</b>	<b>127,635</b>	<b>101%</b>	<b>\$338,833,434</b>	<b>100%</b>
2017-18	UT System	20,917	16%	\$83,752,012	24%
	LGIs	29,947	23%	\$108,706,504	31%
	TBR 2-Year	47,208	36%	\$84,734,388	24%
	Independents	17,153	13%	\$57,952,116	16%
	TCATs	17,661	13%	\$18,449,877	5%
	Proprietary Institutions	439	0.3%	\$1,505,347	0.4%
	<b>Total*</b>	<b>132,026</b>	<b>101%</b>	<b>\$355,100,244</b>	<b>100%</b>
2018-19	UT System	21,686	14.6%	\$86,827,824	22%
	LGIs	30,900	20.8%	\$112,086,203	28%
	TBR 2-Year	58,803	39.5%	\$112,228,494	29%
	Independents	17,947	12.1%	\$60,987,465	15%
	TCATs	18,711	12.6%	\$19,591,464	5%
	Proprietary Institutions	659	0.4%	\$2,001,373	1%
	<b>Total*</b>	<b>148,743</b>	<b>100%</b>	<b>\$393,722,823</b>	<b>100%</b>

Source: TSAC year-end report

Notes: \*Annual totals represent a distinct count of students and are not always the sum of the sector totals for the year.

**Table 6**  
**Distribution of First-Time Scholarship Recipients by System and Scholarship Program, Fall 2018**

		Student Headcount					
		HOPE	GAMS	Aspire	Access	Total	
<b>First-time TELS Freshmen</b>	<b>Student Headcount</b>	LGI Universities	5,391	658	2,604	106	8,759
		TBR Community Colleges	6,579	88	2,644	138	9,449
		UT Campuses	4,037	1,131	1,479	20	6,667
		Private Institutions	2,837	636	1,225	37	4,735
		<b>Total</b>	<b>18,844</b>	<b>2,513</b>	<b>7,952</b>	<b>301</b>	<b>29,610</b>
	<b>Percent</b>	LGI Universities	62%	8%	30%	1%	100%
		TBR Community Colleges	70%	1%	28%	1%	100%
		UT Campuses	61%	17%	22%	0.3%	100%
		Private Institutions	60%	13%	26%	1%	100%
		<b>Total</b>	<b>64%</b>	<b>8%</b>	<b>27%</b>	<b>1%</b>	<b>100%</b>

Notes:

- Percentages may not add up to 100% due to rounding.

**Table 7**  
**Distribution of All Scholarship Recipients by System and Scholarship Program, Fall 2018**

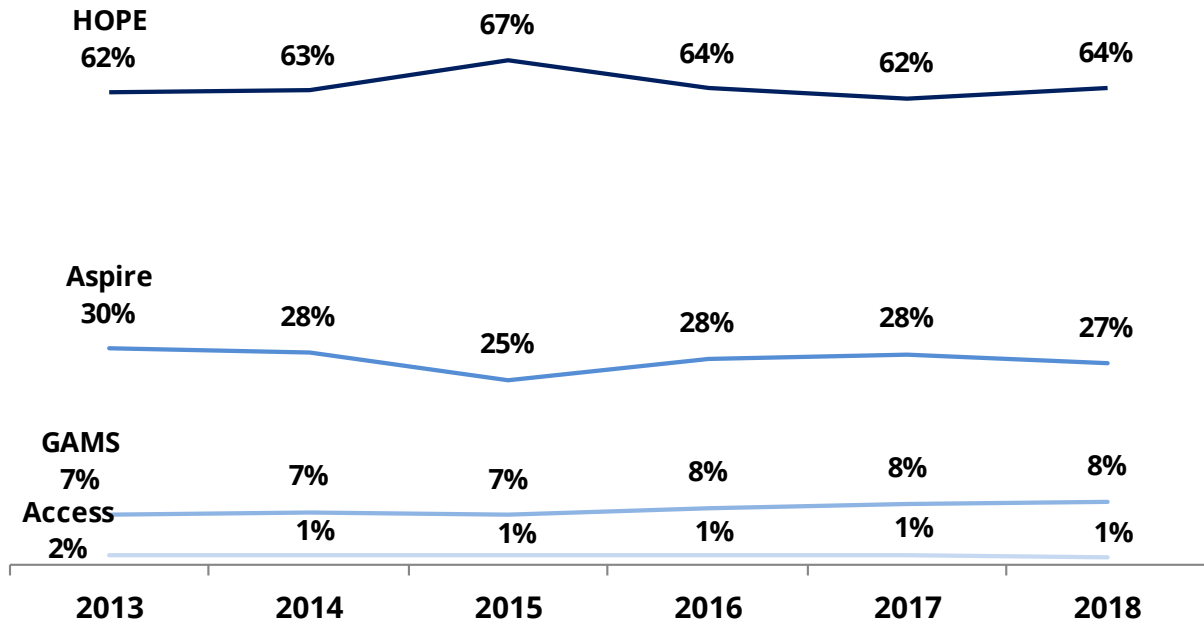
		Student Headcount					
		HOPE	GAMS	Aspire	Access	Total	
<b>All TELS Recipients</b>	<b>Student Headcount</b>	LGI Universities	16,198	1,994	6,382	112	24,686
		TBR Community Colleges	11,120	158	3,959	144	15,381
		UT Campuses	11,959	3,748	3,740	20	19,467
		Private Institutions	8,178	1,998	2,988	37	13,201
		<b>Total</b>	<b>47,455</b>	<b>7,898</b>	<b>17,069</b>	<b>313</b>	<b>72,735</b>
	<b>Percent</b>	LGI Universities	66%	8%	26%	0%	100%
		TBR Community Colleges	72%	1%	26%	1%	100%
		UT Campuses	61%	19%	19%	0.1%	100%
		Private Institutions	62%	15%	23%	0.3%	100%
		<b>Total</b>	<b>65%</b>	<b>11%</b>	<b>23%</b>	<b>0%</b>	<b>100%</b>

Notes:

- Students are only eligible for the HOPE Access Grant for 24 credit hours. Students then either become eligible for the traditional HOPE scholarship or lose lottery eligibility.
- Percentages may not add up to 100% due to rounding.
- This table shows student enrollment by system and scholarship type in fall 2018 and does not necessarily represent the institution of initial scholarship receipt.

**Figure 2**

**Distribution of First-Time Scholarship Recipients by Scholarship Program, Fall 2013 – Fall 2018**





**Table 8**  
**Public First-Time Scholarship Recipients as a Percent of All Public First-Time Freshmen**  
**Fall 2013 – Fall 2018**

System	Fall 2013			Fall 2014		
	On TELS	FTF*	%	On TELS	FTF*	%
LGI Universities	8,935	12,125	74%	8,843	11,983	74%
TBR Community Colleges	6,298	17,124	37%	7,006	17,379	40%
UT Campuses	6,878	7,908	87%	6,895	7,977	86%
<b>TN Public Higher Ed Total</b>	<b>22,111</b>	<b>37,157</b>	<b>60%</b>	<b>22,744</b>	<b>37,339</b>	<b>61%</b>
System	Fall 2015			Fall 2016		
	On TELS	FTF*	%	On TELS	FTF*	%
LGI Universities	7,688	11,309	68%	8,449	12,171	69%
TBR Community Colleges	9,811	22,190	44%	9,271	20,770	45%
UT Campuses	6,322	7,541	84%	6,411	7,804	82%
<b>TN Public Higher Ed Total</b>	<b>23,821</b>	<b>41,040</b>	<b>58%</b>	<b>24,131</b>	<b>40,745</b>	<b>59%</b>
System	Fall 2017			Fall 2018		
	On TELS	FTF*	%	On TELS	FTF*	%
LGI Universities	8,849	12,790	69%	8,759	12,208	72%
TBR Community Colleges	9,809	21,163	46%	9,449	21,084	45%
UT Campuses	6,474	8,029	81%	6,667	8,544	78%
<b>TN Public Higher Ed Total</b>	<b>25,132</b>	<b>41,982</b>	<b>60%</b>	<b>24,875</b>	<b>41,836</b>	<b>59%</b>

**Notes:**

- Public Institutions only.
- First-Time Freshmen is an institutionally-defined measure from the Tennessee Higher Education Fact Book (Table 2.6).

# **Section II:**

---

# **Recipient Demographics**

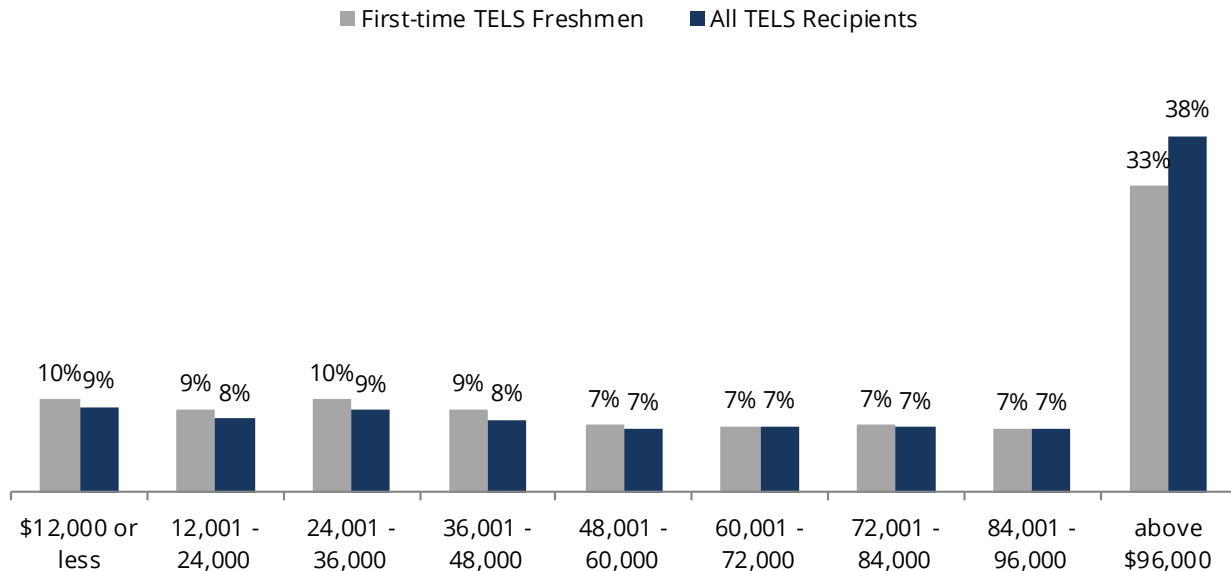
**Table 9**  
**Lottery Scholarship Receipt by Gender and Race**  
**Fall 2013 – Fall 2018**

		2013	2014	2015	2016	2017	2018
<b>First-time TELS Freshmen</b>	Female	57%	57%	57%	58%	58%	58%
	Male	43%	43%	43%	42%	42%	42%
<b>All TELS Recipients</b>	Female	58%	60%	60%	60%	60%	60%
	Male	42%	40%	40%	40%	40%	40%
<b>First-time TELS Freshmen</b>	Black or African American	13%	12%	12%	13%	13%	13%
	White	79%	78%	79%	78%	78%	77%
	Other	9%	9%	8%	9%	9%	10%
<b>All TELS Recipients</b>	Black or African American	10%	10%	10%	11%	11%	11%
	White	81%	81%	81%	80%	80%	80%
	Other	9%	9%	9%	9%	9%	10%

**Notes:**

- Table excludes students whose race/ethnicity or gender is unknown.
- "Other" category includes: Alaskan Native, American Indian, Asian/Pacific Islander, Hispanic, and Multiracial.

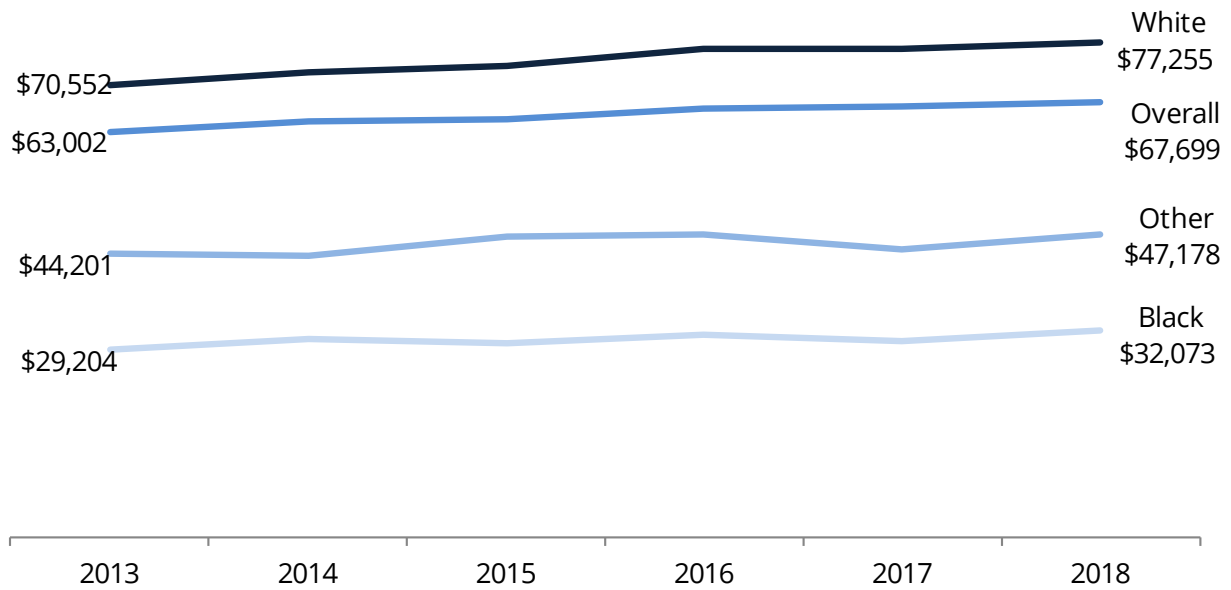
**Figure 3**  
**Lottery Scholarship Receipt by Family Adjusted Gross Income (AGI)**  
**Fall 2018**



**Note:**

- Percentages may not sum to 100% due to rounding.

**Figure 4**  
**Median Family AGI of First-Time TELS Recipients by Race**  
**Fall 2013 – Fall 2018**



Notes:

- "Other" category includes: Alaskan Native, American Indian, Asian/Pacific Islander, Hispanic, and Multiracial.
- Overall includes individuals whose race/ethnicity is unknown.

**Table 10**

**Percentage of First-Time TELS Recipients Eligible for a Pell Grant by System, Fall 2013 – Fall 2018**

		Fall 2013	Fall 2014	Fall 2015	Fall 2016	Fall 2017	Fall 2018
First-time TELS Freshmen	LGI Universities	8,935	8,843	7,688	8,449	8,849	8,759
	TBR Community Colleges	6,298	7,006	9,811	9,271	9,809	9,449
	UT Campuses	6,878	6,895	6,322	6,411	6,474	6,667
	Private Institutions	4,472	4,172	4,116	4,503	4,660	4,735
	<b>Total</b>	<b>26,583</b>	<b>26,916</b>	<b>27,937</b>	<b>28,634</b>	<b>29,792</b>	<b>29,610</b>
% Pell-Eligible	LGI Universities	48.4%	48.0%	48.5%	48.9%	50.1%	49.2%
	TBR Community Colleges	51.4%	51.9%	50.5%	49.1%	50.1%	50.9%
	UT Campuses	35.4%	35.6%	33.2%	32.7%	34.5%	34.9%
	Private Institutions	43.1%	42.5%	41.2%	43.1%	41.5%	44.0%
	<b>Total</b>	<b>44.8%</b>	<b>45.0%</b>	<b>44.7%</b>	<b>44.4%</b>	<b>45.4%</b>	<b>45.7%</b>

Notes:

- This reflects a student's Pell eligibility in the year of first scholarship receipt.

**Table 11**

**Percentage of First-Time TELS Recipients Receiving the Tennessee Student Assistance Award (TSAA) by System, Fall 2013 – Fall 2018**

		Fall 2013	Fall 2014	Fall 2015	Fall 2016	Fall 2017	Fall 2018
First-time TELS Freshmen	LGI Universities	8,935	8,843	7,688	8,449	8,849	8,759
	TBR Community Colleges	6,298	7,006	9,811	9,271	9,809	9,449
	UT Campuses	6,878	6,895	6,322	6,411	6,474	6,667
	Private Institutions	4,472	4,172	4,116	4,503	4,660	4,735
	<b>Total</b>	<b>26,583</b>	<b>26,916</b>	<b>27,937</b>	<b>28,634</b>	<b>29,792</b>	<b>29,610</b>
% Received TSAA	LGI Universities	25.3%	21.7%	33.3%	33.0%	36.7%	32.7%
	TBR Community Colleges	23.4%	20.2%	34.5%	31.0%	34.5%	31.5%
	UT Campuses	19.1%	14.8%	22.9%	21.9%	25.0%	23.7%
	Private Institutions	24.0%	19.2%	28.8%	29.5%	30.5%	29.7%
	<b>Total</b>	<b>23.1%</b>	<b>19.1%</b>	<b>30.7%</b>	<b>29.3%</b>	<b>32.5%</b>	<b>29.8%</b>

Notes:

- This reflects a student's TSAA receipt in the year of first scholarship receipt.

Table 12

Percentage of First-Time TELS Recipients with at least one Parent with an Associate’s Degree or Higher by System, Fall 2013 – Fall 2018

		Fall 2013	Fall 2014	Fall 2015	Fall 2016	Fall 2017	Fall 2018
First-time TELS Freshmen	LGI Universities	8,935	8,843	7,688	8,449	8,849	8,759
	TBR Community Colleges	6,298	7,006	9,811	9,271	9,809	9,449
	UT Campuses	6,878	6,895	6,322	6,411	6,474	6,667
	Private Institutions	4,472	4,172	4,116	4,503	4,660	4,735
	<b>Total</b>	<b>26,583</b>	<b>26,916</b>	<b>27,937</b>	<b>28,634</b>	<b>29,792</b>	<b>29,610</b>
% Parent with Associate's or Higher	LGI Universities	62.1%	64.3%	65.2%	65.2%	65.3%	66.4%
	TBR Community Colleges	54.4%	55.4%	56.6%	58.6%	58.1%	58.3%
	UT Campuses	76.1%	75.9%	78.3%	77.6%	77.1%	76.9%
	Private Institutions	69.0%	69.8%	71.5%	70.2%	71.7%	69.5%
	<b>Total</b>	<b>65.1%</b>	<b>65.8%</b>	<b>66.1%</b>	<b>66.7%</b>	<b>66.5%</b>	<b>66.7%</b>

Notes:

- This is a measure of “College or Beyond”.

**Table 13**

**Academic Profile of Incoming First-Time TELS Recipients by System and Scholarship Type, Fall 2015 – Fall 2018**

System	Scholarship Program	2015				2016			
		Mean HS GPA	Mean Composite ACT	% 3.0 and above HS GPA	% 21 and above Composite ACT	Mean HS GPA	Mean Composite ACT	% 3.0 and above HS GPA	% 21 and above Composite ACT
LGI Universities	HOPE	3.49	22.8	89%	76%	3.47	23.3	89%	81%
	GAMS	3.95	30.3	100%	100%	3.94	30.7	100%	100%
	Aspire	3.42	21.6	89%	62%	3.39	21.5	89%	61%
	Access	2.88	18.8	Not eligible for Access		2.88	19.0	Not eligible for Access	
	<b>Total</b>	<b>3.48</b>	<b>22.9</b>	<b>89%</b>	<b>73%</b>	<b>3.47</b>	<b>23.1</b>	<b>88%</b>	<b>75%</b>
TBR Community Colleges	HOPE	3.34	20.8	87%	56%	3.34	21.2	86%	61%
	GAMS	3.93	29.6	100%	100%	3.96	30.2	100%	100%
	Aspire	3.32	20.0	88%	46%	3.32	20.2	87%	50%
	Access	2.86	18.7	Not eligible for Access		2.88	18.9	Not eligible for Access	
	<b>Total</b>	<b>3.33</b>	<b>20.6</b>	<b>86%</b>	<b>53%</b>	<b>3.33</b>	<b>20.9</b>	<b>85%</b>	<b>57%</b>
UT Campuses	HOPE	3.59	24.3	92%	91%	3.55	24.4	91%	91%
	GAMS	4.02	30.8	100%	100%	3.96	30.8	100%	100%
	Aspire	3.59	23.7	91%	81%	3.57	24.2	91%	87%
	Access	2.89	19.3	Not eligible for Access		2.89	19.2	Not eligible for Access	
	<b>Total</b>	<b>3.65</b>	<b>25.1</b>	<b>92%</b>	<b>90%</b>	<b>3.62</b>	<b>25.5</b>	<b>92%</b>	<b>92%</b>
Private Colleges	HOPE	3.46	23.2	90%	80%	3.52	23.6	92%	82%
	GAMS	3.83	30.5	96%	98%	3.87	30.8	98%	98%
	Aspire	3.37	22.2	89%	66%	3.41	22.2	90%	66%
	Access	2.80	18.9	Not eligible for Access		2.87	18.6	Not eligible for Access	
	<b>Total</b>	<b>3.47</b>	<b>23.8</b>	<b>90%</b>	<b>78%</b>	<b>3.52</b>	<b>24.0</b>	<b>91%</b>	<b>79%</b>
<b>Grand Total</b>		<b>3.46</b>	<b>22.7</b>	<b>89%</b>	<b>70%</b>	<b>3.47</b>	<b>23.1</b>	<b>89%</b>	<b>73%</b>

System	Scholarship Program	2017				2018			
		Mean HS GPA	Mean Composite ACT	% 3.0 and above HS GPA	% 21 and above Composite ACT	Mean HS GPA	Mean Composite ACT	% 3.0 and above HS GPA	% 21 and above Composite ACT
LGI Universities	HOPE	3.47	23.3	89%	81%	3.49	23.4	90%	81%
	GAMS	3.95	30.7	100%	100%	3.90	30.8	99%	100%
	Aspire	3.38	21.9	87%	63%	3.43	22.3	90%	66%
	Access	2.86	18.9	Not eligible for Access		2.88	18.9	Not eligible for Access	
	<b>Total</b>	<b>3.47</b>	<b>23.3</b>	<b>88%</b>	<b>75%</b>	<b>3.49</b>	<b>23.6</b>	<b>90%</b>	<b>77%</b>
TBR Community Colleges	HOPE	3.35	21.5	86%	65%	3.42	21.6	87%	65%
	GAMS	3.85	30.3	98%	100%	3.89	30.0	99%	99%
	Aspire	3.32	20.3	88%	51%	3.33	20.6	87%	53%
	Access	2.88	18.9	Not eligible for Access		2.87	18.9	Not eligible for Access	
	<b>Total</b>	<b>3.34</b>	<b>21.2</b>	<b>85%</b>	<b>60%</b>	<b>3.35</b>	<b>21.4</b>	<b>86%</b>	<b>61%</b>
UT Campuses	HOPE	3.58	24.5	91%	91%	3.59	24.8	92%	92%
	GAMS	3.98	31.0	100%	100%	4.00	31.3	100%	100%
	Aspire	3.61	24.2	93%	85%	3.62	24.5	93%	86%
	Access	2.91	19.1	Not eligible for Access		2.87	19.3	Not eligible for Access	
	<b>Total</b>	<b>3.66</b>	<b>25.5</b>	<b>93%</b>	<b>91%</b>	<b>3.67</b>	<b>25.9</b>	<b>94%</b>	<b>92%</b>
Private Colleges	HOPE	3.52	23.7	91%	82%	3.42	23.5	90%	80%
	GAMS	3.87	31.2	98%	99%	3.89	31.4	98%	100%
	Aspire	3.36	22.5	88%	68%	3.38	22.7	88%	69%
	Access	2.86	18.9	Not eligible for Access		2.87	18.9	Not eligible for Access	
	<b>Total</b>	<b>3.51</b>	<b>24.3</b>	<b>90%</b>	<b>80%</b>	<b>3.47</b>	<b>24.3</b>	<b>90%</b>	<b>79%</b>
<b>Grand Total</b>		<b>3.47</b>	<b>23.2</b>	<b>89%</b>	<b>74%</b>	<b>3.44</b>	<b>23.0</b>	<b>89%</b>	<b>76%</b>

Note: GPA and ACT data is from THEC's Student Information System (SIS).

## **Section III:**

---

# **Scholarship Renewal**



## Renewal Requirements

Tennessee Education Lottery Scholarship (TELS) recipients are evaluated for scholarship renewal after every 24 attempted credit hours. At the 24- and 48-hour check points, students must have earned a cumulative postsecondary GPA of 2.75 or higher to remain eligible for the scholarship. Upon attempting 72 credit hours, a minimum cumulative GPA of 3.0 is required to remain eligible. This continues at each subsequent 24 credit hour check point, up to 120 credit hours.

State law permits those with 72 or more credit hours to maintain eligibility if their cumulative GPA is less than 3.0, as long as they:

- have maintained a cumulative grade point average of at least 2.75;
- have earned a semester grade point average of at least 3.0 for the semester in which continuing eligibility was reviewed;
- have enrolled full-time in the semester when continuing eligibility was reviewed; and
- will enroll full-time in the subsequent semester.

The TELS award is available for up to five years, baccalaureate degree attainment, or 120 attempted credit hours, whichever comes first. The 120 hour cap is applicable only to students who first received TELS in fall 2009 and after. Students in programs requiring more than 120 credit hours are exempt from the 120 hour cap. These students can receive a scholarship until they have attempted the number of hours required to earn the degree, not to exceed 136 credit hours.

**Table 14**

**One-year Scholarship Renewal Rates by Original Scholarship Type and System, First-Time TELS Recipients, Fall 2017**

		<b>HOPE</b>	<b>GAMS</b>	<b>Aspire</b>	<b>Access</b>	<b>Total</b>
LGI Universities	First-time TELS Freshmen	5,254	604	2,847	143	8,848
	Scholarship Renewal Rate	60%	91%	50%	17%	58%
TBR Community Colleges	First-time TELS Freshmen	6,665	81	2,877	176	9,799
	Scholarship Renewal Rate	50%	81%	38%	17%	47%
UT Campuses	First-time TELS Freshmen	3,825	1,149	1,482	18	6,474
	Scholarship Renewal Rate	62%	89%	57%	11%	66%
Private Institutions	First-time TELS Freshmen	2,809	604	1,187	55	4,655
	Scholarship Renewal Rate	67%	91%	53%	18%	66%
<b>Total</b>	<b>First-time TELS Freshmen</b>	<b>18,553</b>	<b>2,438</b>	<b>8,393</b>	<b>392</b>	<b>29,776</b>
	<b>Scholarship Renewal Rate</b>	<b>58%</b>	<b>90%</b>	<b>48%</b>	<b>17%</b>	<b>57%</b>

**Table 15**  
**One-year Scholarship Renewal Rates by Gender, Race, and Original Scholarship Program, Fall 2017 First-Time TELS Recipients**

		HOPE	GAMS	Aspire	Access	Total
<b>Scholarship Renewal Rate</b>	Female	64%	94%	51%	21%	62%
	Male	50%	86%	43%	12%	51%
	Black or African American	51%	93%	42%	16%	46%
	White	59%	90%	49%	15%	59%
	Other	57%	88%	54%	26%	58%
	<b>Overall</b>	<b>58%</b>	<b>90%</b>	<b>48%</b>	<b>17%</b>	<b>57%</b>

Notes:

- Table excludes individuals whose race/ethnicity or gender is unknown or missing.
- "Other" includes: Alaskan Native, American Indian, Asian/Pacific Islander, Hispanic, and Multiracial.

**Table 16**  
**One-year Scholarship Renewal Rates by AGI and Original Scholarship Program, Fall 2017 First-Time TELS Recipients**

		HOPE	GAMS	Aspire	Access	Total
<b>Renewal Rate</b>	\$12,000 and below	Students receive Aspire or Access		43%	18%	42%
	12,001-24,000			49%	16%	47%
	24,001-36,000			50%	18%	49%
	36,001-48,000	50%	91%	Programs require family income of \$36,000 or less		53%
	48,001-60,000	54%	89%			57%
	60,001-72,000	55%	88%			58%
	72,001-84,000	58%	89%			61%
	84,001-96,000	59%	88%			62%
	Over \$96,000	63%	91%			67%
	<b>Total</b>	<b>58%</b>	<b>90%</b>	<b>48%</b>	<b>17%</b>	<b>57%</b>

Notes:

- If a student was HOPE-eligible, but had an AGI of \$36,000 or less, they were grouped with Aspire students

**Table 17**

**One-year Scholarship Renewal Rates by ACT Composite Score and High School GPA, Fall 2017 First-Time TELS Recipients**

		ACT Composite Score						Total
		29 or higher	25-28	21-24	18-20	17 or less	Unknown	
High School GPA	3.75 or above	89%	84%	77%	71%	65%	69%	82%
	3.50-3.74	67%	67%	62%	55%	57%	50%	61%
	3.25-3.49	53%	53%	48%	42%	41%	80%	46%
	3.00-3.24	37%	39%	37%	33%	30%	20%	34%
	2.75-2.99	35%	30%	30%	18%		0%	28%
	2.50-2.74	25%	21%	18%	Not Qualified for TELS		0%	19%
	2.25-2.49	8%	18%	11%	Not Qualified for TELS		0%	13%
	2.24 or less	0%	17%	8%	Not Qualified for TELS		0%	11%
	Unknown	82%	45%	45%	36%	54%	33%	48%
<b>Total</b>	<b>81%</b>	<b>68%</b>	<b>53%</b>	<b>44%</b>	<b>39%</b>	<b>55%</b>	<b>57%</b>	

 Exceeds the statewide average renewal rate of **57%**.

Average ACT and High School GPA for those who Renewed a Scholarship:	
Average High School GPA	3.64
Average ACT	24.2

## **Section IV:**

---

# **Postsecondary Retention for Scholarship Non- Renewals**

### Table 18

## Fall-to-Fall Retention Rate for First-Time Scholarship Recipients who did not renew their Scholarship Eligibility in Year Two by System, Fall 2013 - Fall 2017

		Freshman Cohort				
		Fall 2013	Fall 2014	Fall 2015	Fall 2016	Fall 2017
Non-Renewals	LGI Univ	3,909	3,737	3,070	3,385	3,672
	TBR CC	3,161	3,713	5,372	4,946	5,243
	UT Campuses	2,556	2,540	2,152	2,207	2,230
	Private*	1,526	1,316	1,255	1,517	1,594
	<b>Total</b>	<b>11,152</b>	<b>11,306</b>	<b>11,849</b>	<b>12,055</b>	<b>12,739</b>
Returned Next Fall	LGI Univ	2,505	2,352	1,983	2,143	2,208
	TBR CC	1,548	1,828	2,601	2,469	2,361
	UT Campuses	1,960	1,896	1,612	1,606	1,629
	Private*	732	610	622	718	708
	<b>Total</b>	<b>6,745</b>	<b>6,686</b>	<b>6,818</b>	<b>6,934</b>	<b>6,906</b>
Retention Rate	LGI Univ	64%	63%	65%	63%	60%
	TBR CC	49%	49%	48%	50%	45%
	UT Campuses	77%	75%	75%	73%	73%
	Private*	48%	46%	50%	47%	44%
	<b>Total</b>	<b>60%</b>	<b>59%</b>	<b>58%</b>	<b>58%</b>	<b>54%</b>

Notes:

- \*Select private institutions report to P20 Connect and those are captured here. This does not capture all private institutions.
- P20 Connect was used to match retention data for all systems. This does not capture all TICUA institutions.

### Table 19

## Fall-to-Fall Retention Rate for First-Time Scholarship Recipients who did not renew their Scholarship Eligibility in Year Two by Scholarship Type, Fall 2013 - Fall 2017

		Freshman Cohort				
		Fall 2013	Fall 2014	Fall 2015	Fall 2016	Fall 2017
Non-Renewals	HOPE	6,746	6,984	7,949	7,560	7,783
	GAMS	149	170	143	205	246
	Aspire	3,963	3,877	3,473	4,017	4,380
	Access	294	275	284	273	325
	<b>Total</b>	<b>11,152</b>	<b>11,306</b>	<b>11,849</b>	<b>12,055</b>	<b>12,739</b>
Returned Next Fall	HOPE	4,215	4,269	4,651	4,475	4,404
	GAMS	90	97	85	120	156
	Aspire	2,283	2,161	1,949	2,214	2,182
	Access	157	159	133	125	160
	<b>Total</b>	<b>6,745</b>	<b>6,686</b>	<b>6,818</b>	<b>6,934</b>	<b>6,906</b>
Retention Rate	HOPE	62%	61%	59%	59%	57%
	GAMS	60%	57%	59%	59%	63%
	Aspire	58%	56%	56%	55%	50%
	Access	53%	58%	47%	46%	49%
	<b>Total</b>	<b>60%</b>	<b>59%</b>	<b>58%</b>	<b>58%</b>	<b>54%</b>

Notes:

- \*Select private institutions report to P20 Connect and those are captured here. This does not capture all private institutions.
- P20 Connect was used to match retention data for all systems. This does not capture all TICUA institutions.

**Table 20**

**Fall-to-Fall Retention Rate for First-Time Scholarship Recipients who did not renew their Scholarship Eligibility in Year Two by AGI, Fall 2017**

AGI	HOPE	GAMS	Aspire	Access	Total
\$12000 or less	Students receive Aspire or Access		44%	46%	<b>44%</b>
12,001-24,000			48%	48%	<b>48%</b>
24,001-36,000			55%	56%	<b>55%</b>
36,001-48,000	53%	50%	Programs require family income of \$36,000 or less		<b>53%</b>
48,001-60,000	49%	61%			<b>49%</b>
60,001-72,000	56%	62%			<b>56%</b>
72,001-84,000	52%	79%			<b>53%</b>
84,001-96,000	57%	61%			<b>57%</b>
over \$96,000	55%	64%			<b>64%</b>
<b>Total</b>	<b>54%</b>	<b>64%</b>	<b>49%</b>	<b>49%</b>	<b>54%</b>

Notes:

- If a student was HOPE-eligible, but had an AGI of \$36,000 or less, they were grouped with Aspire students.

# **Section V:**

---

# **Five-year Graduation Rates with TELS Intact**



**Table 21**

**Five Year Graduation Rate with Scholarship Intact by System, Fall 2010 – Fall 2013, First-Time TELS Cohorts**

**Fall 2010 Cohort**

System	Freshman Cohort	Graduated on TELS	%
LGI Universities	9,225	2,581	28.0%
TBR Community Colleges	5,704	1,365	23.9%
UT Campuses	6,483	2,450	37.8%
Private Institutions	4,515	1,890	41.9%
<b>Total</b>	<b>25,927</b>	<b>8,286</b>	<b>32.0%</b>

**Fall 2011 Cohort**

System	Freshman Cohort	Graduated on TELS	%
LGI Universities	9,352	2,632	28.1%
TBR Community Colleges	6,058	1,555	25.7%
UT Campuses	6,761	2,689	39.8%
Private Institutions	4,534	1,922	42.4%
<b>Total</b>	<b>26,705</b>	<b>8,798</b>	<b>32.9%</b>

**Fall 2012 Cohort**

System	Freshman Cohort	Graduated on TELS	%
LGI Universities	8,771	2,675	30.5%
TBR Community Colleges	6,146	1,694	27.6%
UT Campuses	6,915	2,931	42.4%
Private Institutions	4,475	1,954	43.7%
<b>Total</b>	<b>26,307</b>	<b>9,254</b>	<b>35.2%</b>

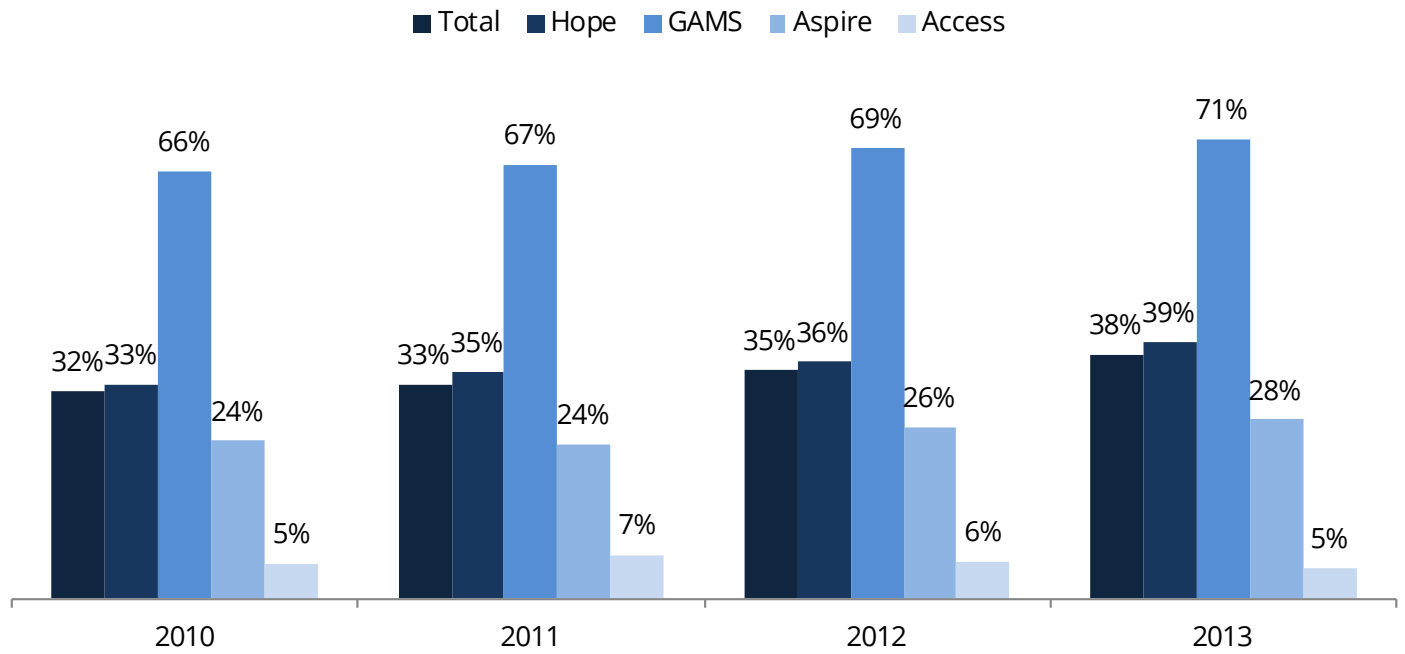
**Fall 2013 Cohort**

System	Freshman Cohort	Graduated on TELS	%
LGI Universities	8,935	3,037	34.0%
TBR Community Colleges	6,298	1,911	30.3%
UT Campuses	6,878	3,080	44.8%
Private Institutions	4,472	1,975	44.2%
<b>Total</b>	<b>26,583</b>	<b>10,003</b>	<b>37.6%</b>

Notes:

- Graduation rate data for all cohorts incorporates THEC’s Student Information System (SIS), P20 Connect, and National Student Clearinghouse to identify graduates.

**Figure 5**  
**Five Year Graduation Rate with Scholarship Intact by Original Scholarship Type, Fall 2010 – Fall 2013, First-Time TELS Cohorts**



Notes:

- Graduation rate data for all cohorts incorporates THEC's Student Information System (SIS), P20 Connect, and National Student Clearinghouse to identify graduates.

**Table 22**

**Five Year Graduation Rate with Scholarship Intact by Gender and Race/Ethnicity, Fall 2010 – Fall 2013, First-Time TELS Cohorts**

**Fall 2010 Cohort**

	Freshman Cohort	Graduated on TELS	%
Female	14,666	5,146	35.1%
Male	11,257	3,140	27.9%
Black or African American	3,265	587	18.0%
White	20,050	7,009	35.0%
Other	2,395	657	27.4%
<b>Total</b>	<b>25,927</b>	<b>8,286</b>	<b>32.0%</b>

**Fall 2011 Cohort**

	Freshman Cohort	Graduated on TELS	%
Female	15,074	5,592	37.1%
Male	11,631	3,206	27.6%
Black or African American	3,405	575	16.9%
White	20,556	7,440	36.2%
Other	2,477	738	29.8%
<b>Total</b>	<b>26,705</b>	<b>8,798</b>	<b>32.9%</b>

**Fall 2012 Cohort**

	Freshman Cohort	Graduated on TELS	%
Female	14,888	5,838	39.2%
Male	11,419	3,416	29.9%
Black or African American	3,307	643	19.4%
White	20,541	7,868	38.3%
Other	2,190	696	31.8%
<b>Total</b>	<b>26,307</b>	<b>9,254</b>	<b>35.2%</b>

**Fall 2013 Cohort**

	Freshman Cohort	Graduated on TELS	%
Female	15,114	6,393	42.3%
Male	11,469	3,610	31.5%
Black or African American	3,327	716	21.5%
White	20,743	8,443	40.7%
Other	2,241	795	35.5%
<b>Total</b>	<b>26,583</b>	<b>10,003</b>	<b>37.6%</b>

Notes:

- Graduation rate data for all cohorts incorporates THEC’s Student Information System (SIS), P20 Connect, and National Student Clearinghouse to identify graduates. This more robust data source has improved student demographic information which has impacted graduation rates for race/ethnicity. This is not comparable to previous reports.
- Tables exclude individuals with missing or unknown race or gender.
- Table totals reflect the overall graduation rate and may not sum the groups listed.

**Table 23**  
**Five Year Graduation Rate with Scholarship Intact by ACT and High School GPA,**  
**First-time TELS Recipients, Fall 2013**

		ACT Composite Score						Total
		29 or higher	25-28	21-24	18-20	17 or less	Unknown	
<b>High School GPA</b>	3.75 or above	55%	67%	57%	45%	51%	42%	<b>63%</b>
	3.50-3.74	43%	46%	43%	34%	29%	50%	<b>41%</b>
	3.25-3.49	27%	29%	29%	24%	16%	38%	<b>26%</b>
	3.00-3.24	18%	26%	20%	16%	10%	9%	<b>17%</b>
	2.75-2.99	11%	11%	13%	6%		0%	<b>11%</b>
	2.50-2.74	13%	7%	10%			0%	<b>9%</b>
	2.25-2.49	0%	8%	4%	Not Qualified for TELS		0%	<b>4%</b>
	2.24 or less	0%	4%	3%			0%	<b>3%</b>
	Unknown	25%	48%	36%	35%	42%	7%	<b>36%</b>
	<b>Total</b>	<b>62%</b>	<b>50%</b>	<b>34%</b>	<b>25%</b>	<b>16%</b>	<b>26%</b>	<b>38%</b>

Exceeds the statewide graduation rate with TELS intact of **37.6%**.

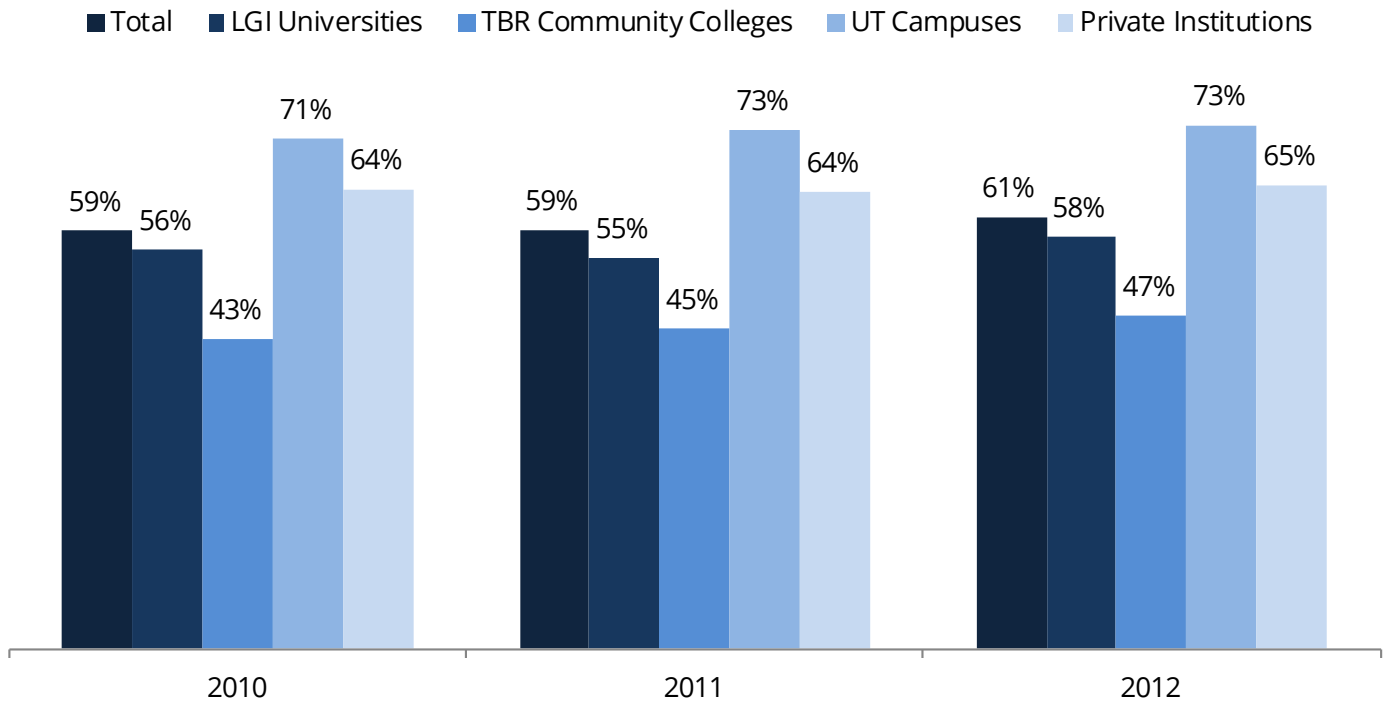
Average ACT and high school GPA for those who graduated with their scholarship intact:	
Average High School GPA	3.72
Average ACT	24.5

# **Section VI:**

---

# **Six-Year Graduation Rates of TELS Recipients**

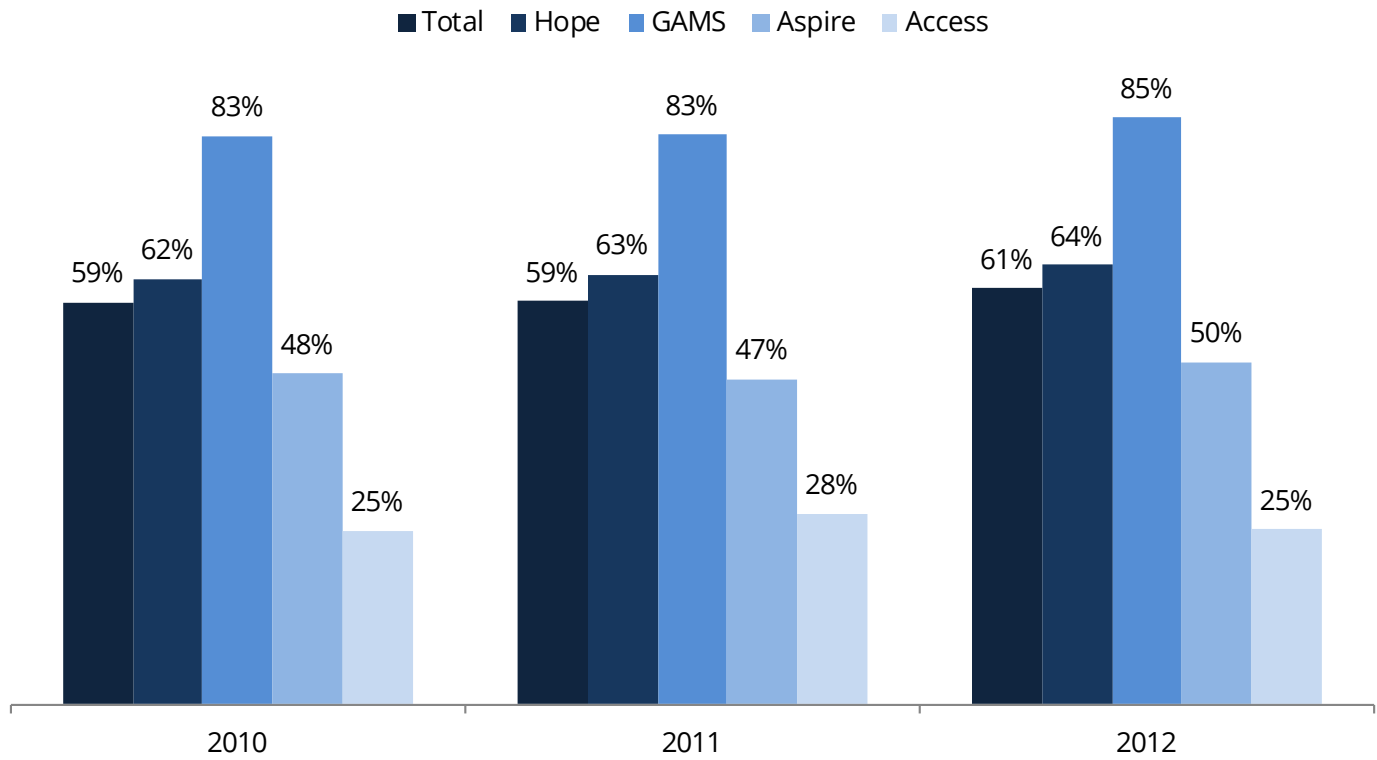
**Figure 6**  
**Six Year Graduation Rate by System, First-Time Scholarship Recipients**  
**Fall 2010 – Fall 2012 Cohorts**



**Notes:**

- For the purposes of this analysis, "Graduated" includes students who lost their scholarship before attaining a degree.

**Figure 7**  
**Six Year Graduation Rate by Scholarship Type, First-Time Scholarship Recipients, Fall 2010 – Fall 2012 Cohorts**



Notes:

- For the purposes of this analysis, "Graduated" includes students who lost their scholarship before attaining a degree

## Table 24

### Six Year Graduation Rate by Gender and Race/Ethnicity, First-Time Scholarship Recipients, Fall 2010 – Fall 2012 Cohorts

#### Fall 2010 Cohort

	Freshman Cohort	Graduated	%
Female	14,666	8,968	61.1%
Male	11,257	6,209	55.2%
Black or African American	3,265	1,591	48.7%
White	20,050	12,217	60.9%
Other	2,395	1,313	54.8%
<b>Overall</b>	<b>25,927</b>	<b>15,177</b>	<b>58.5%</b>

#### Fall 2011 Cohort

	Freshman Cohort	Graduated	%
Female	15,074	9,386	62.3%
Male	11,631	6,279	54.0%
Black or African American	3,405	1,578	46.3%
White	20,556	12,576	61.2%
Other	2,477	1,445	58.3%
<b>Overall</b>	<b>26,705</b>	<b>15,665</b>	<b>58.7%</b>

#### Fall 2012 Cohort

	Freshman Cohort	Graduated	%
Female	14,888	9,426	63.3%
Male	11,419	6,497	56.9%
Black or African American	3,307	1,631	49.3%
White	20,541	12,945	63.0%
Other	2,190	1,277	58.3%
<b>Overall</b>	<b>26,307</b>	<b>15,923</b>	<b>60.5%</b>

Notes:

- For the purposes of this analysis, “Graduated” includes students who lost their scholarship before attaining a degree.
- Graduation rate data for all cohorts incorporates THEC’s Student Information System (SIS), P20 Connect, and National Student Clearinghouse to identify graduates. This more robust data source has improved student demographic information which has impacted graduation rates for race/ethnicity. This is not comparable to previous reports.
- Table excludes individuals with missing or unknown race/ethnicity or gender.
- Table total represents the overall graduation rate and may not be the sum of the groups listed.



## **Section VII:**

---

# **Scholarship Renewal, Retention, and Graduation Rates Over Time**

**Table 25**

**Scholarship Renewal, Postsecondary Retention, and Graduation Rates by First-Time Scholarship Recipients, Fall 2013 – Fall 2017 Cohorts**

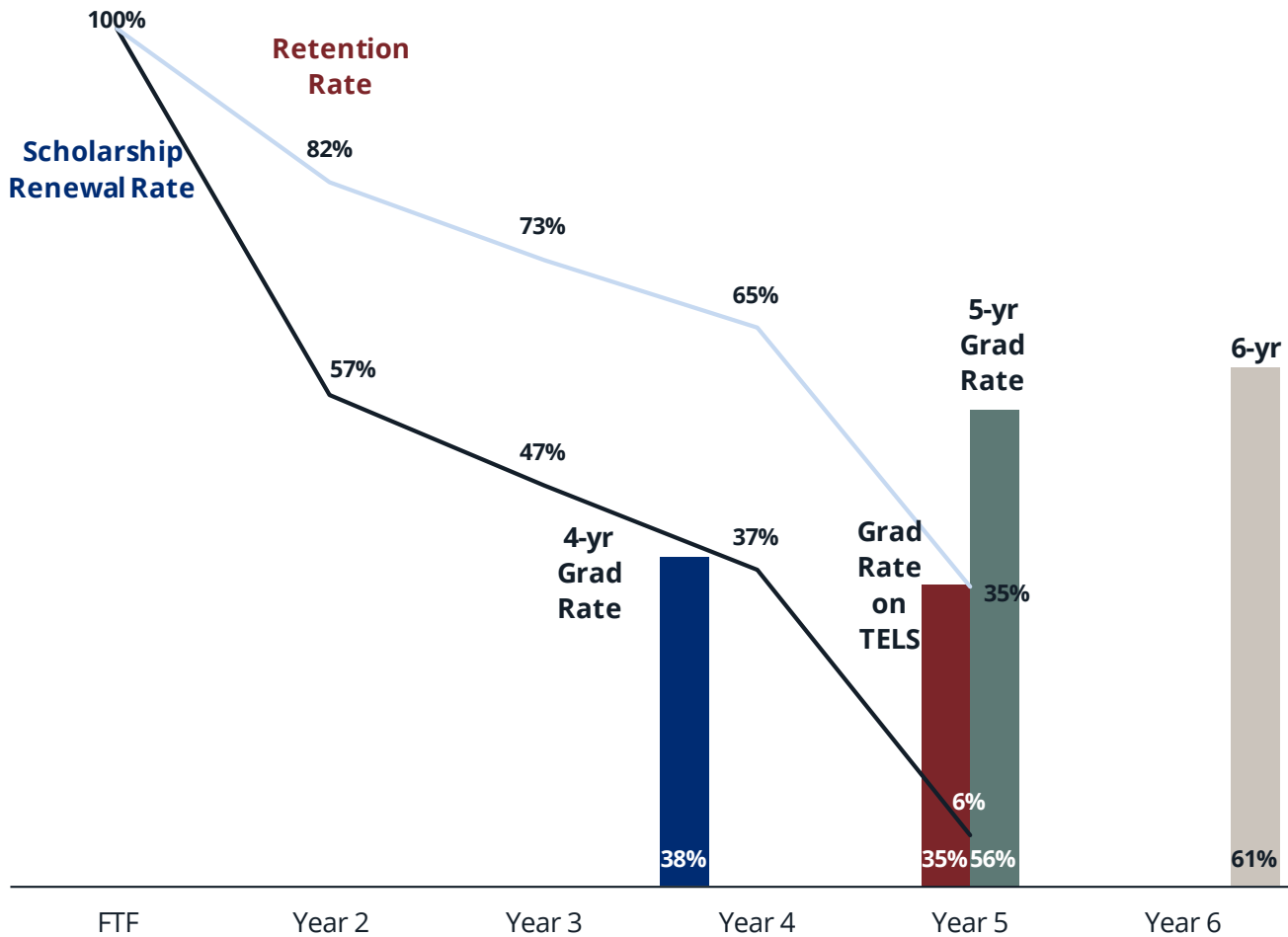
Cohort Year	First-time TELS Freshmen	Fall to Fall Cohort Scholarship Renewal Rates				Fall to Fall Cohort Retention Rates				Cohort Graduation Rates			
		Year 2	Year 3	Year 4	Year 5	Year 2	Year 3	Year 4	Year 5	within 4 years	on TELS within 5 years	within 5 years	within 6 years
2013	26,583	58%	47%	37%	6%	82%	73%	65%	33%	41%	38%	57%	
2014	26,916	58%	47%	37%	5%	82%	72%	65%	30%	43%			
2015	27,935	58%	46%	36%		81%	70%	60%					
2016	28,626	58%	46%			81%	69%						
2017	29,799	57%				79%							

**Notes:**

- Scholarship renewals and retention rates are fall to fall. Retention means a student returned to higher education the following fall with or without the scholarship intact.
- Students are only eligible to receive a TELS scholarship for up to 5 years or 120 credit hours, whichever event occurs first. As a result, for the table, retention rates are not calculated past the fifth semester.

**Figure 8**

**Scholarship Renewal, Postsecondary Retention, and Graduation Rates, Fall 2012 First-Time Scholarship Recipients**



Notes:

- Scholarship renewal and college retention rates are fall to fall. Retention means a student returned to a higher education institution the following fall with or without the scholarship intact.

Explanation: Explanation: This graph represents the trajectory for first-time freshman TELS recipients in fall 2012. The blue line represents the share of those FTF who renewed their scholarship each year (e.g., 57% of FTF retained their scholarship in Y2). The orange line represents the share of FTF who were retained in higher education (82% of the total fall FTF cohort was enrolled in higher education in Y2). The blue bar represents the four-year graduation rate of the total fall FTF cohort. The red bar indicates that 35% of the cohort graduated on their scholarship. The green and gray bars represent five and six year graduation rates, respectively, of the total cohort.

Table 26

Four, Five, and Six-Year Graduation Rates by Scholarship Type and System, First-Time Scholarship Recipients, Fall 2010 – Fall 2012

Cohort	System	Scholarship Program	First-time TELS Freshmen	Graduated				Graduation Rate				
				within 4-yr	within 5-yr	within 6-yr	On TELS	within 4-yr	within 5-yr	within 6-yr	On TELS	
Fall 2010 Cohort	LGI Universities	HOPE	5,650	1,576	2,930	3,379	1,666	28%	52%	60%	29%	
		GAMS	386	244	323	341	262	63%	84%	88%	68%	
		Aspire	3,019	565	1,161	1,391	643	19%	38%	46%	21%	
		Access	170	10	32	48	10	6%	19%	28%	6%	
	<b>LGI Universities Total</b>			<b>9,225</b>	<b>2,395</b>	<b>4,446</b>	<b>5,159</b>	<b>2,581</b>	<b>26%</b>	<b>48%</b>	<b>56%</b>	<b>28%</b>
	TBR Community Colleges	HOPE	3,715	1,258	1,596	1,752	979	34%	43%	47%	26%	
		GAMS	22	12	15	16	15	55%	68%	73%	68%	
		Aspire	1,853	511	619	685	365	28%	33%	37%	20%	
		Access	114	14	19	22	6	12%	17%	19%	5%	
	<b>TBR Community Colleges Total</b>			<b>5,704</b>	<b>1,795</b>	<b>2,249</b>	<b>2,475</b>	<b>1,365</b>	<b>31%</b>	<b>39%</b>	<b>43%</b>	<b>24%</b>
UT Campuses	HOPE	4,283	1,689	2,840	3,117	1,561	39%	66%	73%	36%		
	GAMS	654	411	562	585	443	63%	86%	89%	68%		
	Aspire	1,510	460	811	921	445	30%	54%	61%	29%		
	Access	36	*	6	11	*	6%	17%	31%	3%		
<b>UT Total</b>			<b>6,483</b>	<b>2,562</b>	<b>4,219</b>	<b>4,634</b>	<b>2,450</b>	<b>40%</b>	<b>65%</b>	<b>71%</b>	<b>38%</b>	
Private Institutions	HOPE	2,548	1,210	1,678	1,792	1,147	47%	66%	70%	45%		
	GAMS	504	308	344	353	309	61%	68%	70%	61%		
	Aspire	1,390	455	678	746	431	33%	49%	54%	31%		
	Access	48	8	10	12	*	17%	21%	25%	6%		
<b>TICUA Total</b>			<b>4,490</b>	<b>1,981</b>	<b>2,710</b>	<b>2,903</b>	<b>1,890</b>	<b>44%</b>	<b>60%</b>	<b>65%</b>	<b>42%</b>	
<b>Grand Total</b>			<b>25,902</b>	<b>8,733</b>	<b>13,624</b>	<b>15,171</b>	<b>8,286</b>	<b>34%</b>	<b>53%</b>	<b>59%</b>	<b>32%</b>	
Fall 2011 Cohort	LGI Universities	HOPE	5,550	1,626	2,904	3,310	1,705	29%	52%	60%	31%	
		GAMS	382	233	299	316	238	61%	78%	83%	62%	
		Aspire	3,230	649	1,227	1,452	678	20%	38%	45%	21%	
		Access	190	15	39	53	11	8%	21%	28%	6%	
	<b>LGI Universities Total</b>			<b>9,352</b>	<b>2,523</b>	<b>4,469</b>	<b>5,131</b>	<b>2,632</b>	<b>27%</b>	<b>48%</b>	<b>55%</b>	<b>28%</b>
	TBR Community Colleges	HOPE	3,866	1,443	1,768	1,921	1,120	37%	46%	50%	29%	
		GAMS	25	19	21	21	20	76%	84%	84%	80%	
		Aspire	2,033	539	680	741	408	27%	33%	36%	20%	
		Access	134	21	28	33	7	16%	21%	25%	5%	
	<b>TBR Community Colleges Total</b>			<b>6,058</b>	<b>2,022</b>	<b>2,497</b>	<b>2,716</b>	<b>1,555</b>	<b>33%</b>	<b>41%</b>	<b>45%</b>	<b>26%</b>
UT Campuses	HOPE	4,307	1,787	2,924	3,215	1,701	41%	68%	75%	39%		
	GAMS	743	473	638	658	511	64%	86%	89%	69%		
	Aspire	1,665	494	894	1,023	471	30%	54%	61%	28%		
	Access	46	6	15	18	6	13%	33%	39%	13%		
<b>UT Total</b>			<b>6,761</b>	<b>2,760</b>	<b>4,471</b>	<b>4,914</b>	<b>2,689</b>	<b>41%</b>	<b>66%</b>	<b>73%</b>	<b>40%</b>	
Private Institutions	HOPE	2,594	1,241	1,671	1,772	1,149	48%	64%	68%	44%		
	GAMS	550	365	407	415	364	66%	74%	75%	66%		
	Aspire	1,334	441	638	703	404	33%	48%	53%	30%		
	Access	56	6	9	14	*	11%	16%	25%	9%		
<b>TICUA Total</b>			<b>4,534</b>	<b>2,053</b>	<b>2,725</b>	<b>2,904</b>	<b>1,922</b>	<b>45%</b>	<b>60%</b>	<b>64%</b>	<b>42%</b>	
<b>Grand Total</b>			<b>26,705</b>	<b>9,358</b>	<b>14,162</b>	<b>15,665</b>	<b>8,798</b>	<b>35%</b>	<b>53%</b>	<b>59%</b>	<b>33%</b>	

Cohort	System	Scholarship Program	First-time TELS Freshmen	Graduated				Graduation Rate				
				within 4-yr	within 5-yr	within 6-yr	On TELS	within 4-yr	within 5-yr	within 6-yr	On TELS	
Fall 2012 Cohort	LGI Universities	HOPE	5,301	1,711	2,915	3,275	1,715	32%	55%	62%	32%	
		GAMS	394	255	330	346	285	65%	84%	88%	72%	
		Aspire	2,893	621	1,204	1,405	669	21%	42%	49%	23%	
		Access	183	10	32	44	6	5%	17%	24%	3%	
	<b>LGI Universities Total</b>			<b>8,771</b>	<b>2,597</b>	<b>4,481</b>	<b>5,070</b>	<b>2,675</b>	<b>30%</b>	<b>51%</b>	<b>58%</b>	<b>30%</b>
	TBR Community Colleges	HOPE	3,992	1,576	1,891	2,026	1,217	39%	47%	51%	30%	
		GAMS	32	24	25	26	20	75%	78%	81%	63%	
		Aspire	1,996	636	732	782	445	32%	37%	39%	22%	
		Access	126	21	26	32	12	17%	21%	25%	10%	
	<b>TBR Community Colleges Total</b>			<b>6,146</b>	<b>2,257</b>	<b>2,674</b>	<b>2,866</b>	<b>1,694</b>	<b>37%</b>	<b>44%</b>	<b>47%</b>	<b>28%</b>
	UT Campuses	HOPE	4,404	1,975	3,043	3,283	1,817	45%	69%	75%	41%	
		GAMS	787	524	698	719	553	67%	89%	91%	70%	
		Aspire	1,686	595	957	1,066	558	35%	57%	63%	33%	
		Access	38	*	6	9	*	5%	16%	24%	8%	
	<b>UT Total</b>			<b>6,915</b>	<b>3,096</b>	<b>4,704</b>	<b>5,077</b>	<b>2,931</b>	<b>45%</b>	<b>68%</b>	<b>73%</b>	<b>42%</b>
	Private Institutions	HOPE	2,534	1,291	1,692	1,789	1,170	51%	67%	71%	46%	
		GAMS	551	374	410	416	367	68%	74%	75%	67%	
Aspire		1,336	460	645	688	415	34%	48%	51%	31%		
Access		54	8	14	17	*	15%	26%	31%	4%		
<b>TICUA Total</b>			<b>4,475</b>	<b>2,133</b>	<b>2,761</b>	<b>2,910</b>	<b>1,954</b>	<b>48%</b>	<b>62%</b>	<b>65%</b>	<b>44%</b>	
<b>Grand Total</b>			<b>26,307</b>	<b>10,083</b>	<b>14,620</b>	<b>15,923</b>	<b>9,254</b>	<b>38%</b>	<b>56%</b>	<b>61%</b>	<b>35%</b>	

**Table 27**

**Scholarship Renewal and Graduation Rates by AGI, HOPE and Aspire Recipients ONLY, Fall 2012 First-Time Scholarship Recipients**

AGI	Beginning Cohort in Fall 2012	Renewal Rate in Year 2	Renewal Rate in Year 3	Renewal Rate in Year 4	Graduated on TELS within 5 Years	Obtained Degree Within 6 Years
\$12,000 or less	2,870	44%	33%	24%	24%	44%
12,001-24,000	2,675	48%	36%	27%	25%	50%
24,001-36,000	2,643	53%	41%	31%	29%	54%
36,001-48,000	2,141	52%	41%	31%	30%	54%
48,001-60,000	1,957	55%	44%	34%	34%	59%
60,001-72,000	1,966	55%	42%	34%	34%	58%
72,001-84,000	1,845	57%	47%	37%	36%	62%
84,001-96,000	1,702	59%	49%	39%	38%	64%
over \$96,000	6,343	65%	55%	43%	41%	72%
<b>Total</b>	<b>24,142</b>	<b>55%</b>	<b>44%</b>	<b>34%</b>	<b>33%</b>	<b>59%</b>

Notes:

- "Obtained Degree" includes associate's or bachelor's degrees.
- Students who lost the scholarship before graduating are included in the "Obtained Degree" column.
- This analysis is limited to HOPE and Aspire recipients because their academic eligibility criteria is identical.

Table 28

First-Time TELS Recipients by Cohort Scholarship Renewal, Postsecondary Retention, and Graduation Rates by Scholarship Program, Fall 2012 – Fall 2017

Cohort Year	Scholarship Program	First-time TELS Freshmen	Fall to Fall Cohort Scholarship Renewal Rates				Fall to Fall Cohort Retention Rates				Cohort Graduation Rates			
			Year 2	Year 3	Year 4	Year 5	Year 2	Year 3	Year 4	Year 5	within 4 years	on TELS within 5 years	within 5 years	within 6 years
2012	HOPE	16,231	59%	48%	38%	6%	84%	75%	68%	37%	40%	36%	59%	64%
	GAMS	1,764	91%	86%	77%	6%	91%	89%	83%	25%	67%	69%	83%	85%
	Aspire	7,911	48%	37%	27%	5%	77%	65%	57%	33%	29%	26%	45%	50%
	Access	401	16%	9%	6%	2%	59%	50%	41%	30%	10%	6%	19%	25%
	<b>Total</b>	<b>26,307</b>	<b>57%</b>	<b>47%</b>	<b>37%</b>	<b>6%</b>	<b>82%</b>	<b>73%</b>	<b>65%</b>	<b>35%</b>	<b>38%</b>	<b>35%</b>	<b>56%</b>	<b>61%</b>
2013	HOPE	16,753	60%	48%	38%	6%	84%	76%	67%	34%	44%	39%	61%	
	GAMS	1,812	92%	87%	77%	6%	91%	88%	82%	24%	69%	71%	82%	
	Aspire	7,658	48%	37%	27%	5%	77%	66%	56%	32%	31%	28%	45%	
	Access	360	18%	9%	4%	1%	62%	46%	36%	28%	10%	5%	21%	
	<b>Total</b>	<b>26,583</b>	<b>58%</b>	<b>47%</b>	<b>37%</b>	<b>6%</b>	<b>82%</b>	<b>73%</b>	<b>65%</b>	<b>33%</b>	<b>41%</b>	<b>38%</b>	<b>57%</b>	
2014	HOPE	17,040	59%	48%	38%	5%	83%	75%	67%	32%	46%			
	GAMS	1,910	91%	86%	75%	5%	92%	88%	83%	22%	70%			
	Aspire	7,631	49%	37%	27%	4%	77%	64%	55%	30%	32%			
	Access	335	18%	9%	5%	1%	64%	50%	42%	29%	15%			
	<b>Total</b>	<b>26,916</b>	<b>58%</b>	<b>47%</b>	<b>37%</b>	<b>5%</b>	<b>82%</b>	<b>72%</b>	<b>65%</b>	<b>30%</b>	<b>43%</b>			
2015	HOPE	18,831	58%	46%	35%		82%	71%	61%					
	GAMS	1,843	92%	87%	77%		91%	89%	83%					
	Aspire	6,914	50%	38%	28%		77%	64%	54%					
	Access	349	19%	12%	6%		57%	40%	34%					
	<b>Total</b>	<b>27,937</b>	<b>58%</b>	<b>46%</b>	<b>36%</b>		<b>81%</b>	<b>70%</b>	<b>60%</b>					
2016	HOPE	18,202	58%	46%			82%	71%						
	GAMS	2,181	91%	85%			92%	88%						
	Aspire	7,906	49%	36%			76%	61%						
	Access	343	20%	10%			56%	42%						
	<b>Total</b>	<b>28,634</b>	<b>58%</b>	<b>46%</b>			<b>81%</b>	<b>69%</b>						
2017	HOPE	18,557	58%				81%							
	GAMS	2,438	90%				91%							
	Aspire	8,396	48%				73%							
	Access	392	17%				57%							
	<b>Total</b>	<b>29,799</b>	<b>57%</b>				<b>79%</b>							

Table 29

**First-Time TELS Recipients by Cohort Scholarship Renewal, Postsecondary Retention, and Graduation Rates by System, Fall 2012 – Fall 2017**

Cohort Year	System	First-time TELS Freshmen	Fall to Fall Cohort Scholarship Renewal Rates				Fall to Fall Cohort Retention Rates				Cohort Graduation Rates			
			Year 2	Year 3	Year 4	Year 5	Year 2	Year 3	Year 4	Year 5	within 4 years	on TELS within 5 years	within 5 years	within 6 years
2012	LGI Universities	8,771	54%	44%	35%	6%	83%	74%	68%	40%	30%	30%	51%	58%
	TBR Community Colleges	6,146	47%	31%	20%	7%	73%	57%	44%	30%	37%	28%	44%	47%
	UT Campuses	6,915	65%	57%	48%	6%	91%	86%	80%	39%	45%	42%	68%	73%
	Private Colleges	4,475	66%	57%	47%	4%	78%	70%	64%	24%	48%	44%	62%	65%
	<b>Total</b>	<b>26,307</b>	<b>57%</b>	<b>47%</b>	<b>37%</b>	<b>6%</b>	<b>82%</b>	<b>73%</b>	<b>65%</b>	<b>35%</b>	<b>38%</b>	<b>35%</b>	<b>56%</b>	<b>61%</b>
2013	LGI Universities	8,935	56%	46%	37%	6%	84%	76%	69%	38%	34%	34%	54%	
	TBR Community Colleges	6,298	50%	32%	20%	7%	74%	58%	43%	29%	40%	30%	46%	
	UT Campuses	6,878	63%	56%	46%	5%	91%	85%	79%	36%	47%	45%	68%	
	Private Colleges	4,472	66%	57%	47%	4%	76%	71%	64%	23%	49%	44%	62%	
	<b>Total</b>	<b>26,583</b>	<b>58%</b>	<b>47%</b>	<b>37%</b>	<b>6%</b>	<b>82%</b>	<b>73%</b>	<b>65%</b>	<b>33%</b>	<b>41%</b>	<b>38%</b>	<b>57%</b>	
2014	LGI Universities	8,843	58%	48%	38%	5%	84%	76%	69%	35%	38%			
	TBR Community Colleges	7,006	47%	30%	19%	6%	73%	56%	43%	28%	41%			
	UT Campuses	6,895	63%	56%	46%	4%	91%	85%	79%	33%	49%			
	Private Colleges	4,172	68%	60%	50%	3%	78%	73%	67%	21%	49%			
	<b>Total</b>	<b>26,916</b>	<b>58%</b>	<b>47%</b>	<b>37%</b>	<b>5%</b>	<b>82%</b>	<b>72%</b>	<b>65%</b>	<b>30%</b>	<b>43%</b>			
2015	LGI Universities	7,688	60%	50%	40%		86%	77%	69%					
	TBR Community Colleges	9,811	45%	29%	18%		72%	53%	39%					
	UT Campuses	6,322	66%	58%	49%		91%	86%	80%					
	Private Colleges	4,116	69%	61%	50%		79%	73%	65%					
	<b>Total</b>	<b>27,937</b>	<b>58%</b>	<b>46%</b>	<b>36%</b>		<b>81%</b>	<b>70%</b>	<b>60%</b>					
2016	LGI Universities	8,449	60%	50%			85%	76%						
	TBR Community Colleges	9,271	47%	28%			73%	52%						
	UT Campuses	6,411	66%	58%			91%	85%						
	Private Colleges	4,503	66%	57%			78%	69%						
	<b>Total</b>	<b>28,634</b>	<b>58%</b>	<b>46%</b>			<b>81%</b>	<b>69%</b>						
2017	LGI Universities	8,849	59%				83%							
	TBR Community Colleges	9,809	47%				70%							
	UT Campuses	6,474	66%				91%							
	Private Colleges	4,667	66%				73%							
	<b>Total</b>	<b>29,799</b>	<b>57%</b>				<b>79%</b>							





# Appendices

# Appendix A

## Percentage of Freshmen Attending Public Postsecondary Institutions on a Lottery Scholarship, Fall 2015 – Fall 2018

Institution	2015			2016		
	# of FTF TN Res	# of FTF with Lottery	% of FTF with Lottery	# of FTF TN Res	# of FTF with Lottery	% of FTF with Lottery
Chattanooga State Community College	1,966	739	38%	1,733	725	42%
Cleveland State Community College	819	436	53%	786	416	53%
Columbia State Community College	1,490	757	51%	1,511	830	55%
Dyersburg State Community College	611	287	47%	603	287	48%
Jackson State Community College	1,094	594	54%	1,070	552	52%
Motlow State Community College	1,942	1,025	53%	1,803	1,013	56%
Nashville State Community College	2,455	652	27%	2,100	507	24%
Northeast State Community College	1,505	749	50%	1,438	668	46%
Pellissippi State Community College	2,494	1,263	51%	2,410	1,251	52%
Roane State Community College	1,371	808	59%	1,313	758	58%
Southwest Tennessee Community College	2,473	461	19%	2,257	403	18%
Volunteer State Community College	2,345	1,152	49%	2,191	984	45%
Walters State Community College	1,625	888	55%	1,555	877	56%
<b>TBR Community Colleges</b>	<b>22,190</b>	<b>9,811</b>	<b>44%</b>	<b>20,770</b>	<b>9,271</b>	<b>45%</b>
Austin Peay State University	1,523	1,029	68%	1,935	1,410	73%
East Tennessee State University	1,935	1,289	67%	1,832	1,307	71%
Middle Tennessee State University	2,809	2,167	77%	2,847	2,233	78%
Tennessee State University	1,406	283	20%	1,300	259	20%
Tennessee Technological University	1,576	1,405	89%	1,562	1,389	89%
University of Memphis	2,060	1,515	74%	2,695	1,851	69%
<b>LGI Universities</b>	<b>11,309</b>	<b>7,688</b>	<b>68%</b>	<b>12,171</b>	<b>8,449</b>	<b>69%</b>
University of Tennessee at Chattanooga	1,860	1,652	89%	2,072	1,809	87%
University of Tennessee, Knoxville	4,660	3,865	83%	4,792	3,837	80%
University of Tennessee at Martin	1,021	803	79%	940	764	81%
<b>UT Campuses</b>	<b>7,541</b>	<b>6,320</b>	<b>84%</b>	<b>7,804</b>	<b>6,410</b>	<b>82%</b>
<b>Grand Total</b>	<b>41,040</b>	<b>23,819</b>	<b>58%</b>	<b>40,745</b>	<b>24,130</b>	<b>59%</b>
Institution	2017			2018		
	# of FTF TN Res	# of FTF with Lottery	% of FTF with Lottery	# of FTF TN Res	# of FTF with Lottery	% of FTF with Lottery
Chattanooga State Community College	1,742	756	43%	1,834	839	46%
Cleveland State Community College	724	386	53%	745	385	52%
Columbia State Community College	1,613	960	60%	1,806	924	51%
Dyersburg State Community College	573	271	47%	620	270	44%
Jackson State Community College	997	561	56%	1,076	533	50%
Motlow State Community College	1,823	1,032	57%	1,709	906	53%
Nashville State Community College	1,543	404	26%	1,649	460	28%
Northeast State Community College	1,575	819	52%	1,427	698	49%
Pellissippi State Community College	2,696	1,288	48%	2,543	1,346	53%
Roane State Community College	1,342	752	56%	1,272	766	60%
Southwest Tennessee Community College	2,476	458	18%	2,400	418	17%
Volunteer State Community College	2,353	1,164	49%	2,374	1,066	45%
Walters State Community College	1,706	958	56%	1,629	838	51%
<b>TBR Community Colleges</b>	<b>21,163</b>	<b>9,809</b>	<b>46%</b>	<b>21,084</b>	<b>9,449</b>	<b>45%</b>
Austin Peay State University	1,949	1,424	73%	1,982	1,403	71%
East Tennessee State University	2,001	1,432	72%	1,872	1,356	72%
Middle Tennessee State University	2,953	2,257	76%	2,850	2,250	79%
Tennessee State University	1,552	317	20%	1,226	236	19%
Tennessee Technological University	1,728	1,545	89%	1,847	1,686	91%
University of Memphis	2,607	1,874	72%	2,431	1,827	75%
<b>LGI Universities</b>	<b>12,790</b>	<b>8,849</b>	<b>69%</b>	<b>12,208</b>	<b>8,758</b>	<b>72%</b>
University of Tennessee at Chattanooga	2,140	1,822	85%	2,251	1,945	86%
University of Tennessee, Knoxville	4,844	3,795	78%	5,152	3,810	74%
University of Tennessee at Martin	1,045	854	82%	1,141	910	80%
<b>UT Campuses</b>	<b>8,029</b>	<b>6,471</b>	<b>81%</b>	<b>8,544</b>	<b>6,665</b>	<b>78%</b>
<b>Grand Total</b>	<b>41,982</b>	<b>25,129</b>	<b>60%</b>	<b>41,836</b>	<b>24,872</b>	<b>59%</b>

## Appendix B

### Lottery Scholarship Receipt by Scholarship Program and Institution, First-Time TELS Recipients and Overall, Fall 2018

Institution	First-time TELS Freshmen					Overall Recipients				
	HOPE	GAMS	Aspire	Access	Total	HOPE	GAMS	Aspire	Access	Total
Austin Peay State University	820	46	519	18	1,403	1,924	154	1,056	19	3,153
East Tennessee State University	829	148	371	7	1,356	2,813	505	1,068	8	4,394
Middle Tennessee State University	1,401	149	672	28	2,250	4,385	451	1,755	31	6,622
Tennessee State University	107	*	121	6	236	363	*	335	6	707
Tennessee Technological University	1,105	207	368	6	1,686	3,285	570	868	6	4,729
University of Memphis	1,129	105	552	41	1,827	3,428	311	1,283	42	5,064
<b>LGI Universities</b>	<b>5,391</b>	<b>657</b>	<b>2,603</b>	<b>106</b>	<b>8,758</b>	<b>16,198</b>	<b>1,994</b>	<b>6,365</b>	<b>112</b>	<b>24,669</b>
Chattanooga State Community College	578	5	242	14	839	991	8	330	15	1,344
Cleveland State Community College	271	*	110	*	385	429	11	145	*	586
Columbia State Community College	701	16	202	*	924	1,083	22	290	*	1,400
Dyersburg State Community College	196	*	64	6	270	305	*	101	6	416
Jackson State Community College	318	*	202	8	533	580	8	275	9	872
Motlow State Community College	641	6	250	9	906	1,102	12	394	10	1,518
Nashville State Community College	309	*	139	11	460	494	*	217	12	728
Northeast State Community College	449	*	228	16	698	863	10	370	17	1,260
Pellissippi State Community College	953	13	362	18	1,346	1,519	22	513	19	2,073
Roane State Community College	529	9	214	14	766	922	15	350	14	1,301
Southwest Tennessee Community College	239	*	164	14	418	403	*	260	14	680
Volunteer State Community College	772	20	264	10	1,066	1,328	37	368	11	1,744
Walters State Community College	623	*	203	11	838	1,101	*	346	11	1,459
<b>TBR Community Colleges</b>	<b>6,579</b>	<b>88</b>	<b>2,644</b>	<b>138</b>	<b>9,449</b>	<b>11,120</b>	<b>158</b>	<b>3,959</b>	<b>144</b>	<b>15,381</b>
University of Tennessee at Chattanooga	1,364	139	428	14	1,945	3,762	376	904	14	5,056
University of Tennessee, Knoxville	2,122	941	746	*	3,810	6,689	3,210	2,117	*	12,017
University of Tennessee at Martin	549	51	305	*	910	1,452	148	674	*	2,279
University of Tennessee Health Science Center	*				*	56	14	45		115
<b>UT Campuses</b>	<b>4,037</b>	<b>1,131</b>	<b>1,479</b>	<b>20</b>	<b>6,667</b>	<b>11,959</b>	<b>3,748</b>	<b>3,740</b>	<b>20</b>	<b>19,467</b>

## Appendix B, continued

Institution	First-time TELS Freshmen					Overall Recipients				
	HOPE	GAMS	Aspire	Access	Total	HOPE	GAMS	Aspire	Access	Total
Baptist College of Health Sciences	50	*	21	*	75	144	7	57	*	209
Belmont University	229	83	66		378	664	208	198		1,070
Bethel University	105	*	73	6	186	275	12	158	6	451
Bryan College	69	9	40		118	199	22	85		306
Carson-Newman University	195	24	108	*	331	547	69	239	*	859
Christian Brothers University	133	15	95	*	245	315	61	154	*	532
Cumberland University	318	6	101	7	432	665	23	218	7	913
Fisk University	14		17	*	32	42		35	*	78
Freed-Hardeman University	89	28	26	*	144	316	115	84	*	516
Hiwassee College	19		16	*	36	51		36	*	88
John A Gupton College	*		2		7	7		*		10
Johnson University	40	*	12	*	57	92	10	25	*	128
King University	42		19		61	140	*	48		193
Lane College	10		32	*	44	17		63	*	82
Lee University	238	76	66	*	381	769	211	183	*	1,164
LeMoyne-Owen College	8		19	*	28	18	*	40	*	60
Lincoln Memorial University	97	16	38	*	152	355	43	127	*	526
Lipscomb University	188	75	57		320	684	216	198		1,098
Martin Methodist College	114	*	48		164	233	*	103		341
Maryville College	119	16	53	*	191	346	54	102	*	505
Memphis College of Art						11	*	13		27
Milligan College	76	15	17	*	109	233	51	42	*	327
O'More College of Design										0
Rhodes College	71	53	19		143	271	162	44		477
South College	74	*	43	*	119	160	*	84	*	249
Southern Adventist University	60	*	12		76	181	25	36		242
Tennessee Wesleyan College	76	8	37		121	279	23	104		406
Trevecca Nazarene University	100	20	41	*	163	323	51	115	*	491
Tusculum College	67	*	45	*	116	168	6	103	*	278
Union University	120	53	53		226	379	173	132		684
Sewanee: The University of the South	55	35	13		103	137	97	45		279
Vanderbilt University	32	82	26		140	86	335	86		507
Watkins College of Art, Design & Film	12		*		17	28	*	18		47
Welch College	12	*	*		20	43	*	10		58
Private Institutions	2,837	636	1,225	37	4,735	8,178	1,998	2,988	37	13,201
<b>Grand Total</b>	<b>18,844</b>	<b>2,512</b>	<b>7,951</b>	<b>301</b>	<b>29,609</b>	<b>47,455</b>	<b>7,898</b>	<b>17,052</b>	<b>313</b>	<b>72,718</b>

## Appendix C

### Lottery Scholarship Receipt by Gender and Institution, First-Time TELS Recipients and Overall, Fall 2018

Institution	First-time TELS Freshmen					Overall Recipients				
	Female	Male	Female %	Male %	Total	Female	Male	Female %	Male %	Total
Austin Peay State University	881	522	63%	37%	1,403	2,030	1,072	65%	35%	3,102
East Tennessee State University	841	515	62%	38%	1,356	2,715	1,588	63%	37%	4,303
Middle Tennessee State University	1,280	970	57%	43%	2,250	3,938	2,578	60%	40%	6,516
Tennessee State University	168	68	71%	29%	236	517	183	74%	26%	700
Tennessee Technological University	763	923	45%	55%	1,686	2,341	2,336	50%	50%	4,677
University of Memphis	1,063	764	58%	42%	1,827	3,007	1,946	61%	39%	4,953
<b>LGI Universities</b>	<b>4,996</b>	<b>3,762</b>	<b>57%</b>	<b>43%</b>	<b>8,758</b>	<b>14,548</b>	<b>9,703</b>	<b>60%</b>	<b>40%</b>	<b>24,251</b>
Chattanooga State Community College	496	343	59%	41%	839	810	518	61%	39%	1,328
Cleveland State Community College	207	178	54%	46%	385	334	266	56%	44%	600
Columbia State Community College	506	418	55%	45%	924	798	600	57%	43%	1,398
Dyersburg State Community College	174	96	64%	36%	270	280	129	68%	32%	409
Jackson State Community College	342	191	64%	36%	533	570	284	67%	33%	854
Motlow State Community College	567	339	63%	37%	906	979	523	65%	35%	1,502
Nashville State Community College	279	181	61%	39%	460	443	273	62%	38%	716
Northeast State Community College	389	309	56%	44%	698	702	533	57%	43%	1,235
Pellissippi State Community College	705	641	52%	48%	1,346	1,099	942	54%	46%	2,041
Roane State Community College	480	286	63%	37%	766	852	424	67%	33%	1,276
Southwest Tennessee Community College	264	154	63%	37%	418	412	249	62%	38%	661
Volunteer State Community College	594	472	56%	44%	1,066	1,022	692	60%	40%	1,714
Walters State Community College	510	328	61%	39%	838	890	539	62%	38%	1,429
<b>TBR Community Colleges</b>	<b>5,513</b>	<b>3,936</b>	<b>58%</b>	<b>42%</b>	<b>9,449</b>	<b>9,191</b>	<b>5,972</b>	<b>61%</b>	<b>39%</b>	<b>15,163</b>
University of Tennessee at Chattanooga	1,220	725	63%	37%	1,945	3,230	1,778	64%	36%	5,008
University of Tennessee, Knoxville	1,964	1,846	52%	48%	3,810	6,370	5,511	54%	46%	11,881
University of Tennessee at Martin	549	361	60%	40%	910	1,391	867	62%	38%	2,258
University of Tennessee Health Science Center	*		100%		*	102	10	91%	9%	112
<b>UT Campuses</b>	<b>3,735</b>	<b>2,932</b>	<b>56%</b>	<b>44%</b>	<b>6,667</b>	<b>11,093</b>	<b>8,166</b>	<b>58%</b>	<b>42%</b>	<b>19,259</b>

## Appendix C, continued

Institution	First-time TEELS Freshmen					Overall Recipients				
	Female	Male	Female %	Male %	Total	Female	Male	Female %	Male %	Total
Baptist College of Health Sciences	65	10	87%	13%	75	184	22	89%	11%	206
Belmont University	250	128	66%	34%	378	726	328	69%	31%	1,054
Bethel University	102	84	55%	45%	186	237	206	53%	47%	443
Bryan College	55	63	47%	53%	118	156	147	51%	49%	303
Carson-Newman University	214	117	65%	35%	331	565	285	66%	34%	850
Christian Brothers University	125	120	51%	49%	245	265	267	50%	50%	532
Cumberland University	256	176	59%	41%	432	547	360	60%	40%	907
Fisk University	19	13	59%	41%	32	53	25	68%	32%	78
Freed-Hardeman University	78	66	54%	46%	144	290	208	58%	42%	498
Hiwassee College	22	14	61%	39%	36	59	26	69%	31%	85
John A Gupton College	*	*	57%	43%	7	6	*	60%	40%	10
Johnson University	36	21	63%	37%	57	70	56	56%	44%	126
King University	36	25	59%	41%	61	119	73	62%	38%	192
Lane College	36	8	82%	18%	44	63	14	82%	18%	77
Lee University	262	119	69%	31%	381	814	343	70%	30%	1,157
LeMoyne-Owen College	25	*	89%	11%	28	55	6	90%	10%	61
Lincoln Memorial University	112	40	74%	26%	152	383	132	74%	26%	515
Lipscomb University	187	133	58%	42%	320	691	393	64%	36%	1,084
Martin Methodist College	99	65	60%	40%	164	223	115	66%	34%	338
Maryville College	113	78	59%	41%	191	321	178	64%	36%	499
Memphis College of Art						21	*	81%	19%	26
Milligan College	53	56	49%	51%	109	192	134	59%	41%	326
O'More College of Design										
Rhodes College	86	57	60%	40%	143	276	197	58%	42%	473
South College	104	15	87%	13%	119	221	29	88%	12%	250
Southern Adventist University	42	34	55%	45%	76	151	90	63%	37%	241
Tennessee Wesleyan College	78	43	64%	36%	121	296	107	73%	27%	403
Trevecca Nazarene University	90	73	55%	45%	163	309	177	64%	36%	486
Tusculum College	75	41	65%	35%	116	167	108	61%	39%	275
Union University	144	82	64%	36%	226	444	236	65%	35%	680
Sewanee: The University of the South	58	45	56%	44%	103	170	109	61%	39%	279
Vanderbilt University	67	73	48%	52%	140	243	261	48%	52%	504
Watkins College of Art, Design & Film	14	*	82%	18%	17	42	10	81%	19%	52
Welch College	12	8	60%	40%	20	41	18	69%	31%	59
Private Institutions	2,919	1,816	62%	38%	4,735	8,400	4,669	64%	36%	13,069
<b>Grand Total</b>	<b>17,163</b>	<b>12,446</b>	<b>58%</b>	<b>42%</b>	<b>29,609</b>	<b>43,232</b>	<b>28,510</b>	<b>60%</b>	<b>40%</b>	<b>71,742</b>

## Appendix D

### Lottery Scholarship Receipt by Race/Ethnicity and Institution, First-Time TELS Recipients and Overall, Fall 2018

Institution	First-time TELS Freshmen							Overall Recipients						
	Black	White	Other	Black %	White %	Other %	Total	Black	White	Other	Black %	White %	Other %	Total
Austin Peay State University	413	819	149	30%	59%	11%	1,381	721	2,017	320	24%	66%	10%	3,058
East Tennessee State University	69	1,180	103	5%	87%	8%	1,352	162	3,849	271	4%	90%	6%	4,282
Middle Tennessee State University	489	1,427	320	22%	64%	14%	2,236	1,194	4,453	813	18%	69%	13%	6,460
Tennessee State University	189	28	17	81%	12%	7%	234	507	140	49	73%	20%	7%	696
Tennessee Technological University	60	1,512	106	4%	90%	6%	1,678	142	4,243	267	3%	91%	6%	4,652
University of Memphis	556	968	286	31%	53%	16%	1,810	1,359	2,813	739	28%	57%	15%	4,911
<b>TBR Universities</b>	<b>1,776</b>	<b>5,934</b>	<b>981</b>	<b>20%</b>	<b>68%</b>	<b>11%</b>	<b>8,691</b>	<b>4,085</b>	<b>17,515</b>	<b>2,459</b>	<b>17%</b>	<b>73%</b>	<b>10%</b>	<b>24,059</b>
Chattanooga State Community College	72	691	70	9%	83%	8%	833	92	1,119	109	7%	85%	8%	1,320
Cleveland State Community College	14	327	41	4%	86%	11%	382	22	520	55	4%	87%	9%	597
Columbia State Community College	50	779	89	5%	85%	10%	918	71	1,195	121	5%	86%	9%	1,387
Dyersburg State Community College	21	233	15	8%	87%	6%	269	35	350	22	9%	86%	5%	407
Jackson State Community College	73	417	41	14%	79%	8%	531	105	687	58	12%	81%	7%	850
Motlow State Community College	61	732	109	7%	81%	12%	902	94	1,219	177	6%	82%	12%	1,490
Nashville State Community College	76	288	88	17%	64%	19%	452	117	465	121	17%	66%	17%	703
Northeast State Community College	12	647	33	2%	93%	5%	692	18	1,157	51	1%	94%	4%	1,226
Pellissippi State Community College	72	1,144	119	5%	86%	9%	1,335	96	1,773	152	5%	88%	8%	2,021
Roane State Community College	9	719	35	1%	94%	5%	763	16	1,196	59	1%	94%	5%	1,271
Southwest Tennessee Community College	212	135	65	51%	33%	16%	412	313	249	90	48%	38%	14%	652
Volunteer State Community College	74	887	95	7%	84%	9%	1,056	102	1,452	144	6%	86%	8%	1,698
Walters State Community College	21	754	58	3%	91%	7%	833	26	1,314	78	2%	93%	6%	1,418
<b>TBR Community Colleges</b>	<b>767</b>	<b>7,753</b>	<b>858</b>	<b>8%</b>	<b>83%</b>	<b>9%</b>	<b>9,378</b>	<b>1,107</b>	<b>12,696</b>	<b>1,237</b>	<b>7%</b>	<b>84%</b>	<b>8%</b>	<b>15,040</b>
University of Tennessee at Chattanooga	211	1,537	181	11%	80%	9%	1,929	404	4,118	449	8%	83%	9%	4,971
University of Tennessee, Knoxville	289	3,035	464	8%	80%	12%	3,788	740	9,734	1,322	6%	83%	11%	11,796
University of Tennessee at Martin	127	742	35	14%	82%	4%	904	217	1,939	90	10%	86%	4%	2,246
University of Tennessee Health Science Center		*	*	0%	50%	50%	*	*	100	8	2%	91%	7%	110
<b>UT Campuses</b>	<b>627</b>	<b>5,315</b>	<b>681</b>	<b>9%</b>	<b>80%</b>	<b>10%</b>	<b>6,621</b>	<b>1,363</b>	<b>15,891</b>	<b>1,869</b>	<b>7%</b>	<b>83%</b>	<b>10%</b>	<b>19,123</b>

## Appendix D, continued

Institution	First-time TELS Freshmen							Overall Recipients						
	Black	White	Other	Black %	White %	Other %	Total	Black	White	Other	Black %	White %	Other %	Total
Baptist College of Health Sciences	15	52	6	21%	71%	8%	73	44	137	23	22%	67%	11%	204
Belmont University	31	298	48	8%	79%	13%	377	82	813	149	8%	78%	14%	1,044
Bethel University	44	120	19	24%	66%	10%	183	84	319	34	19%	73%	8%	437
Bryan College	6	108	*	5%	92%	3%	118	9	275	15	3%	92%	5%	299
Carson-Newman University	26	289	14	8%	88%	4%	329	38	775	29	5%	92%	3%	842
Christian Brothers University	91	91	60	38%	38%	25%	242	153	246	127	29%	47%	24%	526
Cumberland University	29	354	45	7%	83%	11%	428	59	753	86	7%	84%	10%	898
Fisk University	31		*	97%	0%	3%	32	71	*	*	91%	3%	6%	78
Freed-Hardeman University	8	134	*	6%	94%	1%	143	21	459	14	4%	93%	3%	494
Hiwassee College	*	28	*	3%	90%	6%	31	*	65	*	4%	90%	6%	72
John A. Gupton College		*		0%	100%	0%	*		7		0%	100%	0%	7
Johnson University	*	53	*	2%	95%	4%	56	*	116	*	3%	93%	4%	125
King University	7	50	*	12%	83%	5%	60	11	167	12	6%	88%	6%	190
Lane College	37		*	97%	0%	3%	38	70		*	99%	0%	1%	71
Lee University	9	347	24	2%	91%	6%	380	18	1,061	70	2%	92%	6%	1,149
LeMoyne-Owen College	28			100%	0%	0%	28	61			100%	0%	0%	61
Lincoln Memorial University		138	*	0%	98%	2%	141	7	481	15	1%	96%	3%	503
Lipscomb University	21	241	55	7%	76%	17%	317	61	854	156	6%	80%	15%	1,071
Martin Methodist College	15	140	9	9%	85%	5%	164	26	294	16	8%	88%	5%	336
Maryville College	13	161	16	7%	85%	8%	190	18	448	31	4%	90%	6%	497
Memphis College of Art								6	15	*	23%	58%	19%	26
Milligan College	*	98	8	2%	91%	7%	108	8	300	16	2%	93%	5%	324
O'More College of Design														0
Rhodes College	26	77	39	18%	54%	27%	142	76	287	105	16%	61%	22%	468
South College	10	89	16	9%	77%	14%	115	12	209	23	5%	86%	9%	244
Southern Adventist University	*	51	19	7%	68%	25%	75	16	164	60	7%	68%	25%	240
Tennessee Wesleyan College	7	101	13	6%	83%	11%	121	17	359	26	4%	89%	6%	402
Trevecca Nazarene University	18	112	31	11%	70%	19%	161	31	367	82	6%	76%	17%	480
Tusculum College	11	97	6	10%	85%	5%	114	19	240	11	7%	89%	4%	270
Union University	16	198	11	7%	88%	5%	225	27	625	26	4%	92%	4%	678
Sewanee: The University of the South	6	89	6	6%	88%	6%	101	17	235	24	6%	85%	9%	276
Vanderbilt University	20	42	24	23%	49%	28%	86	61	173	93	19%	53%	28%	327
Watkins College of Art, Design & Film	6	8	*	38%	50%	13%	16	7	34	10	14%	67%	20%	51
Welch College	*	18	*	5%	90%	5%	20	*	56	*	2%	95%	3%	59
<b>Private Institutions</b>	<b>541</b>	<b>3,588</b>	<b>489</b>	<b>12%</b>	<b>78%</b>	<b>11%</b>	<b>4,618</b>	<b>1,138</b>	<b>10,336</b>	<b>1,275</b>	<b>9%</b>	<b>81%</b>	<b>10%</b>	<b>12,749</b>
<b>Grand Total</b>	<b>3,711</b>	<b>22,590</b>	<b>3,009</b>	<b>13%</b>	<b>77%</b>	<b>10%</b>	<b>29,310</b>	<b>7,693</b>	<b>56,438</b>	<b>6,840</b>	<b>11%</b>	<b>80%</b>	<b>10%</b>	<b>70,971</b>



## Appendix E

### Lottery Scholarship Receipt by AGI and Institution, First-Time TELS Recipients, Fall 2018

Institution	First-time TELS Freshmen									Grand Total
	\$12,000 or Less	\$12,001 to \$24,000	\$24,001 to \$36,000	\$36,001 to \$48,000	\$48,001 to \$60,000	\$60,001 to \$72,000	\$72,001 to \$84,000	\$84,001 to \$96,000	\$96,001 or Above	
Austin Peay State University	13%	14%	13%	11%	8%	7%	8%	7%	20%	100%
East Tennessee State University	11%	7%	10%	9%	7%	8%	7%	8%	34%	100%
Middle Tennessee State University	10%	10%	13%	11%	7%	7%	5%	6%	31%	100%
Tennessee State University	13%	25%	17%	12%	7%	8%	3%	4%	11%	100%
Tennessee Technological University	9%	6%	9%	7%	7%	8%	9%	9%	38%	100%
University of Memphis	12%	12%	10%	9%	7%	5%	5%	6%	34%	100%
<b>LGI Universities</b>	<b>11%</b>	<b>10%</b>	<b>11%</b>	<b>9%</b>	<b>7%</b>	<b>7%</b>	<b>6%</b>	<b>7%</b>	<b>31%</b>	<b>100%</b>
Chattanooga State Community College	12%	11%	10%	9%	8%	10%	9%	8%	24%	100%
Cleveland State Community College	15%	10%	11%	10%	11%	9%	9%	5%	20%	100%
Columbia State Community College	9%	8%	8%	7%	10%	9%	9%	7%	33%	100%
Dyersburg State Community College	15%	10%	7%	7%	11%	8%	11%	11%	20%	100%
Jackson State Community College	15%	14%	12%	8%	9%	9%	8%	9%	16%	100%
Motlow State Community College	10%	9%	10%	10%	10%	10%	8%	9%	24%	100%
Nashville State Community College	12%	11%	12%	11%	13%	6%	7%	7%	22%	100%
Northeast State Community College	17%	10%	11%	9%	8%	12%	8%	9%	17%	100%
Pellissippi State Community College	12%	8%	9%	8%	7%	7%	9%	9%	31%	100%
Roane State Community College	14%	10%	9%	10%	9%	10%	9%	8%	20%	100%
Southwest Tennessee Community College	16%	17%	12%	9%	6%	7%	9%	5%	20%	100%
Volunteer State Community College	10%	7%	11%	9%	9%	10%	7%	10%	26%	100%
Walters State Community College	13%	10%	11%	11%	9%	11%	8%	7%	21%	100%
<b>TBR Community Colleges</b>	<b>12%</b>	<b>10%</b>	<b>10%</b>	<b>9%</b>	<b>9%</b>	<b>9%</b>	<b>8%</b>	<b>8%</b>	<b>24%</b>	<b>100%</b>
University of Tennessee at Chattanooga	8%	7%	8%	8%	7%	6%	7%	6%	44%	100%
University of Tennessee, Knoxville	6%	6%	8%	6%	5%	5%	5%	5%	55%	100%
University of Tennessee at Martin	14%	10%	10%	10%	7%	8%	6%	8%	27%	100%
University of Tennessee Health Science	0%	0%	0%	0%	0%	0%	0%	0%	100%	100%
<b>UT Campuses</b>	<b>8%</b>	<b>7%</b>	<b>8%</b>	<b>7%</b>	<b>6%</b>	<b>6%</b>	<b>6%</b>	<b>6%</b>	<b>48%</b>	<b>100%</b>

## Appendix E, continued

Institution	First-time TELS Freshmen									
	\$12,000 or Less	\$12,001 to \$24,000	\$24,001 to \$36,000	\$36,001 to \$48,000	\$48,001 to \$60,000	\$60,001 to \$72,000	\$72,001 to \$84,000	\$84,001 to \$96,000	\$96,001 or Above	Grand Total
Baptist College of Health Sciences	7%	13%	11%	5%	8%	7%	5%	12%	32%	100%
Belmont University	6%	7%	4%	6%	5%	6%	7%	6%	52%	100%
Bethel University	15%	15%	13%	13%	5%	8%	10%	4%	18%	100%
Bryan College	8%	12%	14%	6%	8%	11%	8%	8%	25%	100%
Carson-Newman University	14%	8%	12%	13%	8%	10%	8%	6%	21%	100%
Christian Brothers University	11%	15%	14%	9%	9%	7%	7%	4%	24%	100%
Cumberland University	8%	8%	10%	8%	7%	8%	8%	10%	32%	100%
Fisk University	16%	38%	3%	3%	6%	13%	0%	0%	22%	100%
Freed-Hardeman University	5%	5%	9%	8%	6%	7%	9%	10%	41%	100%
Hiwassee College	14%	14%	19%	8%	8%	8%	8%	0%	19%	100%
John A. Gupton College	29%	0%	0%	29%	0%	0%	0%	29%	14%	100%
Johnson University	2%	11%	11%	9%	12%	12%	7%	11%	26%	100%
King University	7%	13%	13%	11%	11%	11%	8%	2%	23%	100%
Lane College	27%	23%	27%	14%	2%	0%	5%	0%	2%	100%
Lee University	8%	3%	7%	7%	6%	7%	7%	6%	50%	100%
LeMoyne-Owen College	32%	36%	7%	18%	0%	0%	7%	0%	0%	100%
Lincoln Memorial University	9%	4%	14%	5%	8%	13%	13%	8%	27%	100%
Lipscomb University	5%	8%	6%	8%	6%	6%	7%	5%	50%	100%
Martin Methodist College	12%	12%	7%	11%	10%	7%	6%	7%	28%	100%
Maryville College	10%	9%	10%	10%	4%	6%	9%	4%	38%	100%
Memphis College of Art										
Milligan College	7%	4%	7%	6%	5%	4%	8%	6%	54%	100%
O'More College of Design										
Rhodes College	4%	3%	6%	4%	3%	5%	4%	3%	67%	100%
South College	15%	10%	13%	9%	12%	8%	8%	8%	18%	100%
Southern Adventist University	8%	1%	7%	5%	11%	7%	5%	5%	51%	100%
Tennessee Wesleyan College	13%	7%	11%	13%	7%	9%	5%	2%	32%	100%
Trevecca Nazarene University	5%	10%	12%	9%	9%	7%	7%	9%	34%	100%
Tusculum College	21%	13%	7%	10%	13%	6%	7%	4%	19%	100%
Union University	8%	9%	7%	8%	7%	8%	6%	6%	41%	100%
Sewanee: The University of the South	6%	2%	6%	6%	4%	4%	7%	8%	58%	100%
Vanderbilt University	5%	6%	8%	6%	4%	0%	7%	6%	57%	100%
Watkins College of Art, Design & Film	24%	0%	12%	6%	18%	0%	18%	0%	24%	100%
Welch College	5%	0%	20%	5%	0%	20%	10%	15%	25%	100%
Private Institutions	9%	8%	9%	9%	7%	7%	7%	6%	37%	100%
<b>Grand Total</b>	<b>10%</b>	<b>9%</b>	<b>10%</b>	<b>9%</b>	<b>7%</b>	<b>7%</b>	<b>7%</b>	<b>7%</b>	<b>33%</b>	<b>100%</b>

