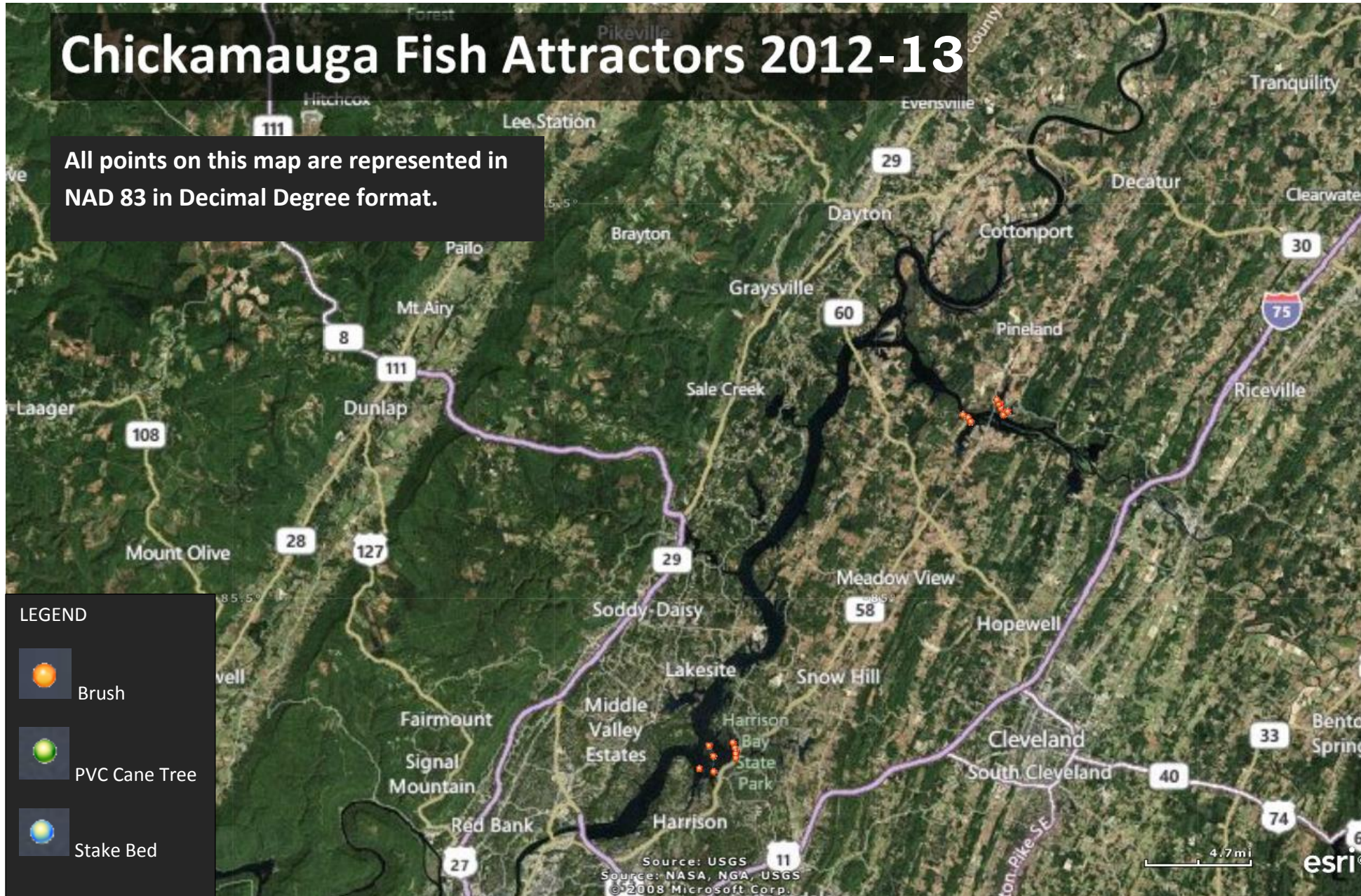


# Chickamauga Fish Attractors 2012-13

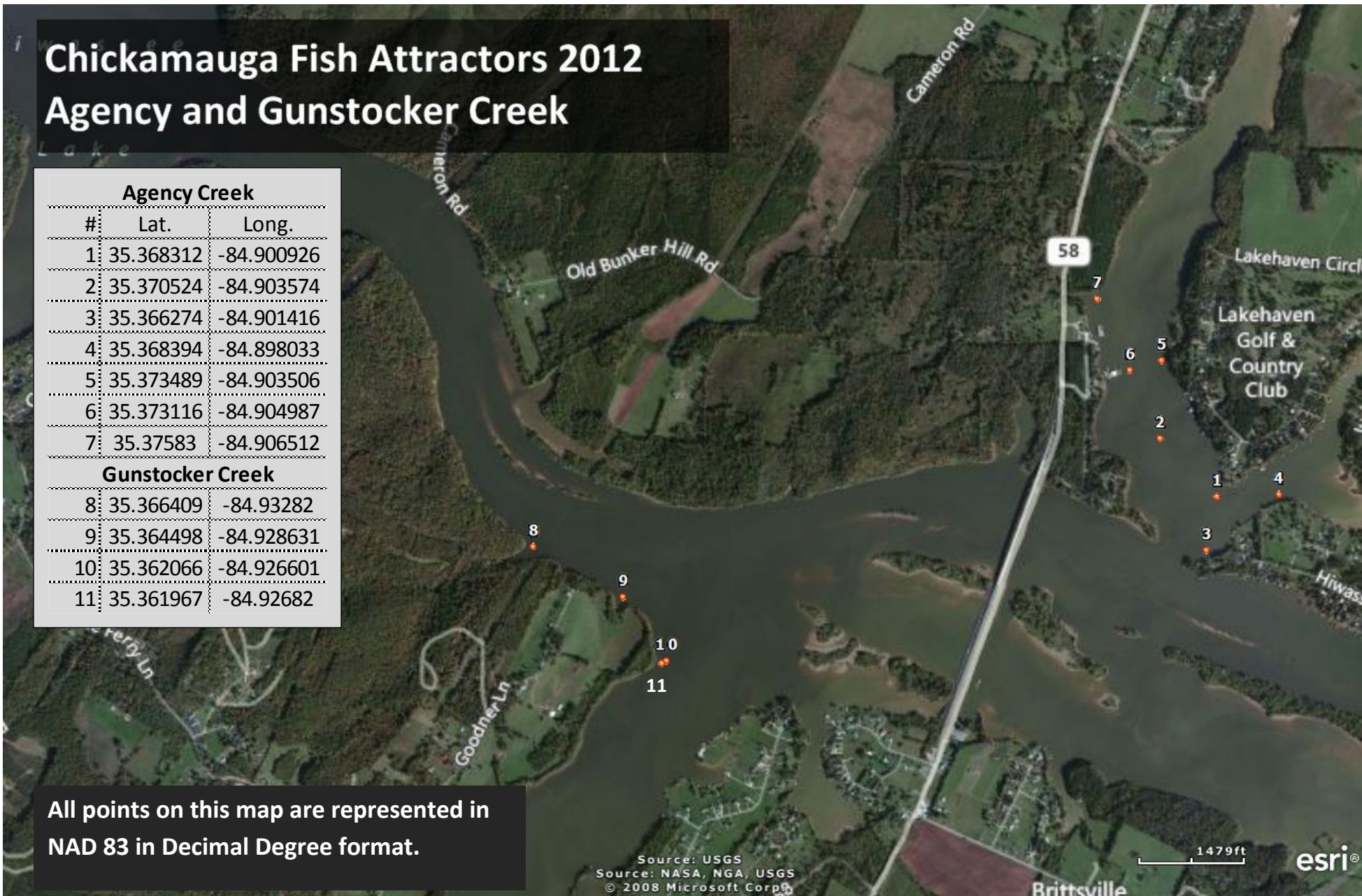
All points on this map are represented in NAD 83 in Decimal Degree format.



# Chickamauga Fish Attractors 2012

## Agency and Gunstocker Creek

Agency Creek		
#	Lat.	Long.
1	35.368312	-84.900926
2	35.370524	-84.903574
3	35.366274	-84.901416
4	35.368394	-84.898033
5	35.373489	-84.903506
6	35.373116	-84.904987
7	35.37583	-84.906512
Gunstocker Creek		
8	35.366409	-84.93282
9	35.364498	-84.928631
10	35.362066	-84.926601
11	35.361967	-84.92682



All points on this map are represented in NAD 83 in Decimal Degree format.

# Chickamauga Fish Attractors 2012 Harrison Bay

Harrison Bay		
#	Lat.	Long.
12	35.153072	-85.108797
13	35.155163	-85.110062
14	35.158471	-85.111668
15	35.156656	-85.129872
16	35.156486	-85.130172
17	35.149906	-85.126692
18	35.140036	-85.126589
19	35.142035	-85.137673
20	35.151423	-85.10942
21	35.148665	-85.109328

All points on this map are represented in  
NAD 83 in Decimal Degree format.

Source: USGS  
Source: NASA, NGA, USGS  
© 2008 Microsoft Corp.

1892ft

esri®

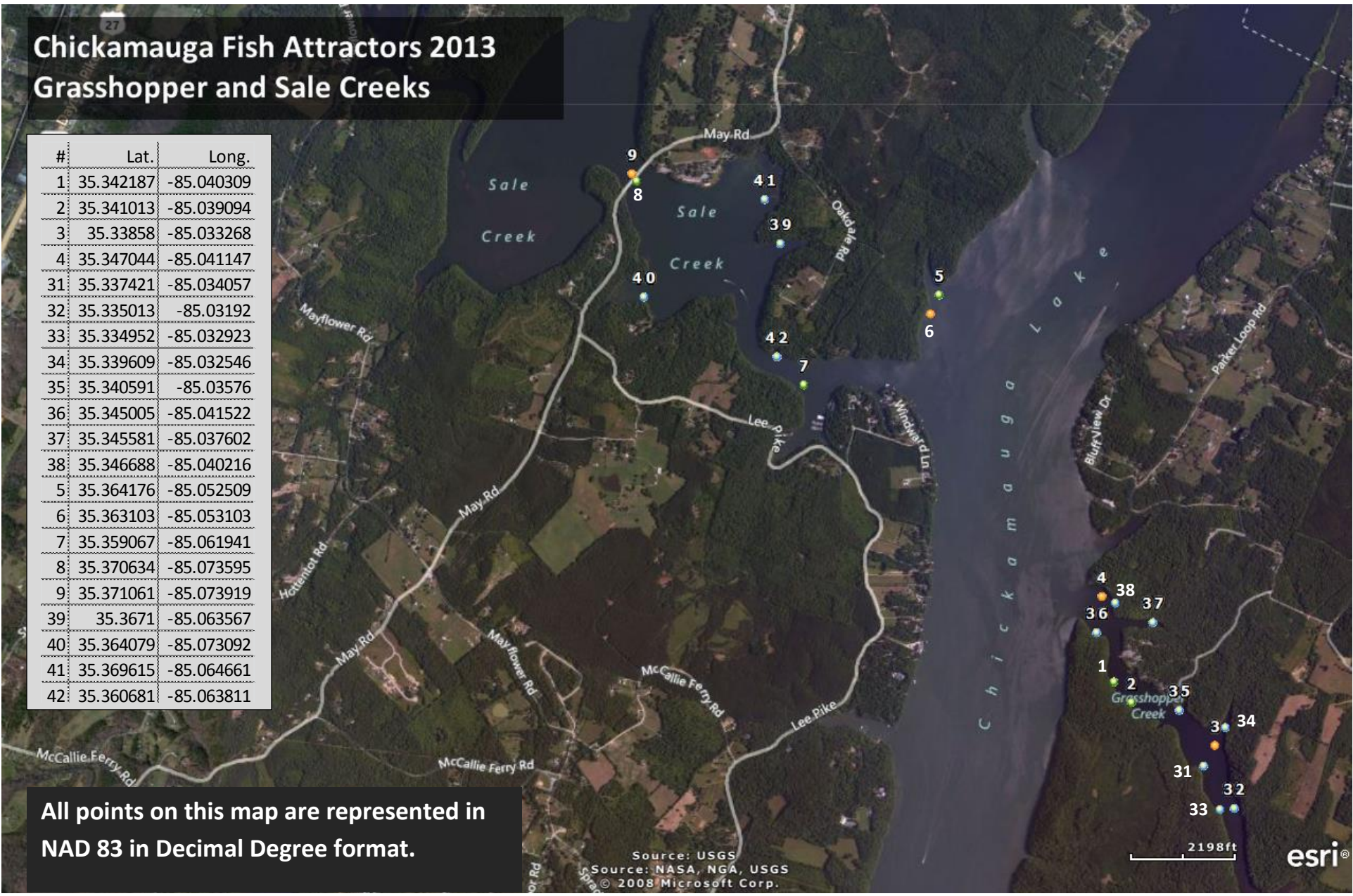
# Chickamauga Fish Attractors 2013 Grasshopper and Sale Creeks

#	Lat.	Long.
1	35.342187	-85.040309
2	35.341013	-85.039094
3	35.33858	-85.033268
4	35.347044	-85.041147
31	35.337421	-85.034057
32	35.335013	-85.03192
33	35.334952	-85.032923
34	35.339609	-85.032546
35	35.340591	-85.03576
36	35.345005	-85.041522
37	35.345581	-85.037602
38	35.346688	-85.040216
5	35.364176	-85.052509
6	35.363103	-85.053103
7	35.359067	-85.061941
8	35.370634	-85.073595
9	35.371061	-85.073919
39	35.3671	-85.063567
40	35.364079	-85.073092
41	35.369615	-85.064661
42	35.360681	-85.063811

All points on this map are represented in NAD 83 in Decimal Degree format.

Source: USGS  
Source: NASA, NGA, USGS  
© 2008 Microsoft Corp.

2198ft  
esri®



**Chickamauga Fish Attractors 2013  
Richland and Mud Creeks  
Mitchell Branch**

#	Lat.	Long.
10	35.477709	-84.973369
11	35.47955	-84.976192
12	35.479501	-84.978188
13	35.481012	-84.980676
14	35.472393	-84.971836
15	35.477735	-84.974854
16	35.478523	-84.975965
17	35.480331	-84.983868
18	35.4358	-84.947077
19	35.434699	-84.944406
20	35.437843	-84.948907
21	35.432638	-84.936575
22	35.432249	-84.934192
23	35.431331	-84.934164
24	35.431342	-84.934789
25	35.430325	-84.934639
26	35.430189	-84.938076
27	35.430149	-84.937272
28	35.459486	-84.960009
29	35.464066	-84.95893
30	35.46675	-84.959769

**All points on this map are represented in  
NAD 83 in Decimal Degree format.**

Source: USGS  
Source: NASA, NGA, USGS  
© 2008 Microsoft Corp.

2670ft

esri®

