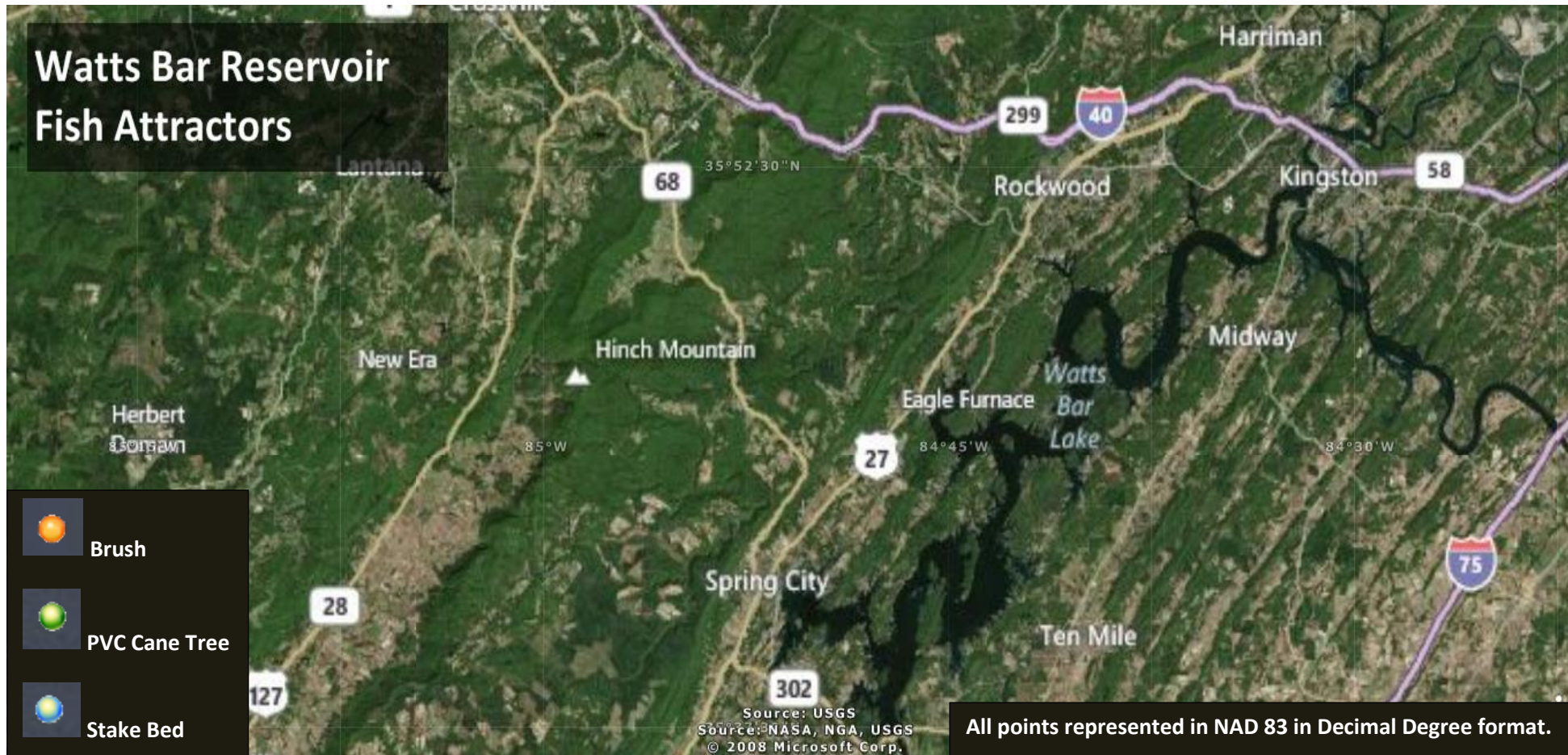


# Watts Bar Reservoir Fish Attractors

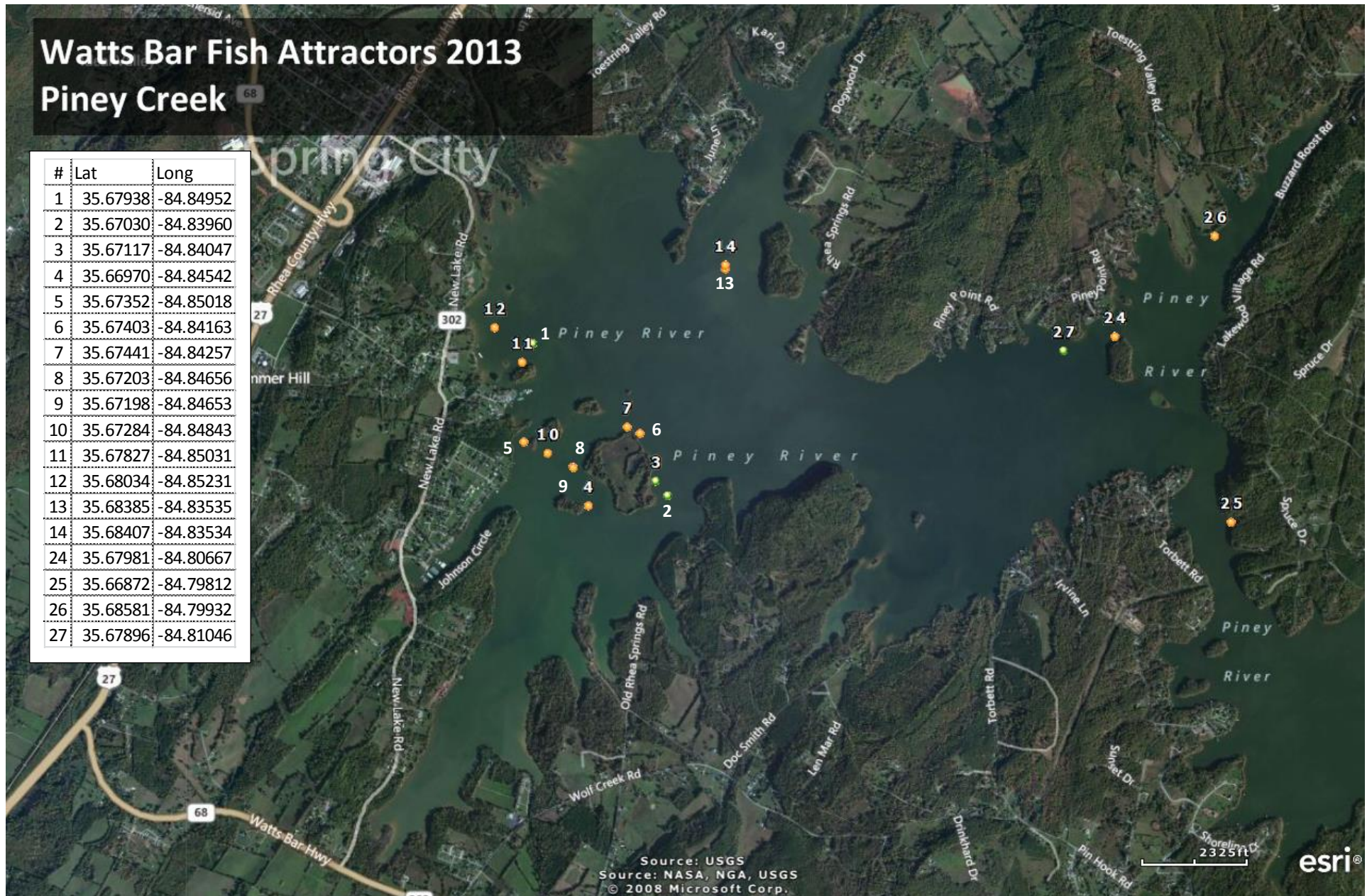


All points represented in NAD 83 in Decimal Degree format.

# Watts Bar Fish Attractors 2013

## Piney Creek

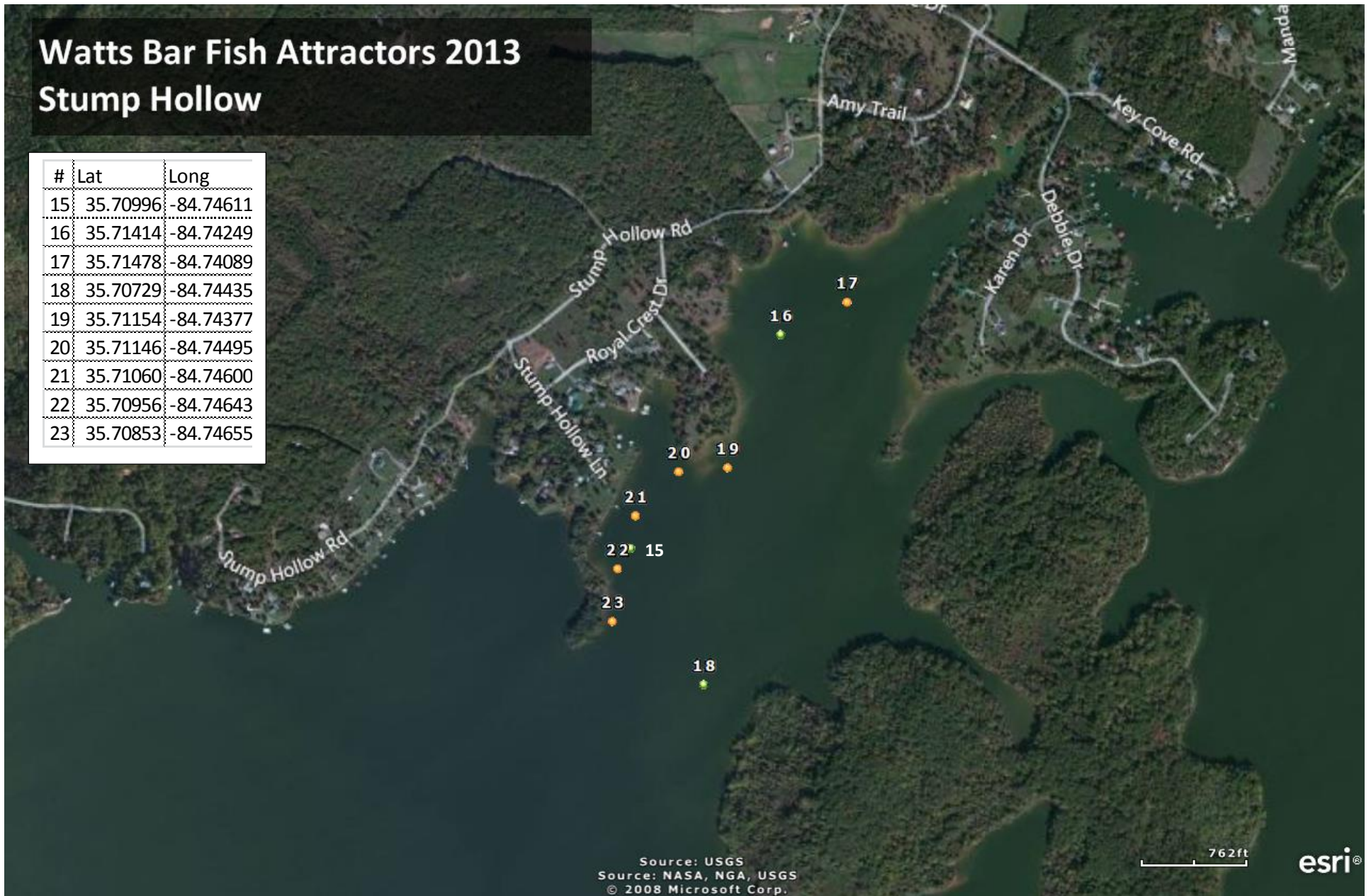
#	Lat	Long
1	35.67938	-84.84952
2	35.67030	-84.83960
3	35.67117	-84.84047
4	35.66970	-84.84542
5	35.67352	-84.85018
6	35.67403	-84.84163
7	35.67441	-84.84257
8	35.67203	-84.84656
9	35.67198	-84.84653
10	35.67284	-84.84843
11	35.67827	-84.85031
12	35.68034	-84.85231
13	35.68385	-84.83535
14	35.68407	-84.83534
24	35.67981	-84.80667
25	35.66872	-84.79812
26	35.68581	-84.79932
27	35.67896	-84.81046



# Watts Bar Fish Attractors 2013

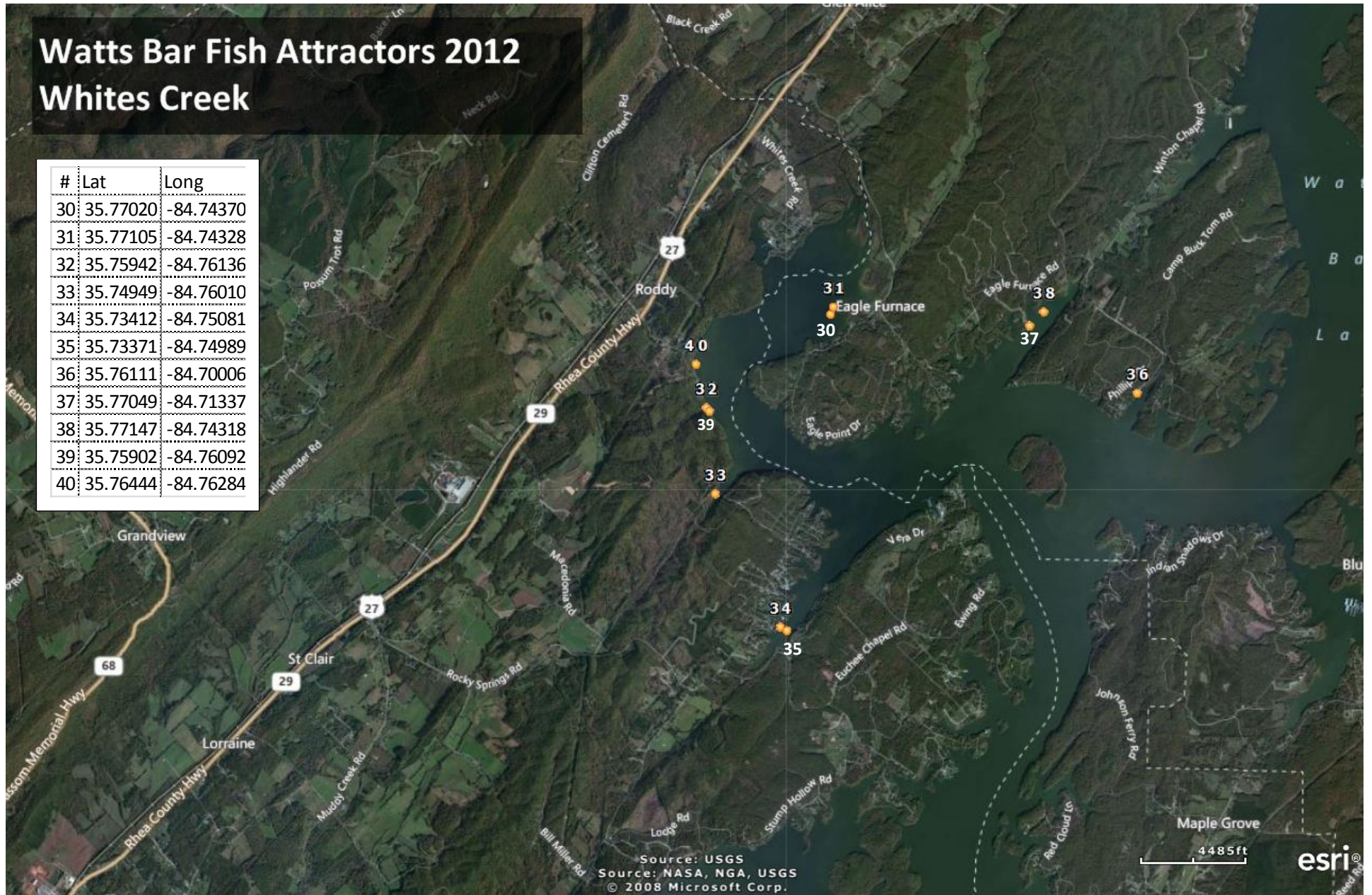
## Stump Hollow

#	Lat	Long
15	35.70996	-84.74611
16	35.71414	-84.74249
17	35.71478	-84.74089
18	35.70729	-84.74435
19	35.71154	-84.74377
20	35.71146	-84.74495
21	35.71060	-84.74600
22	35.70956	-84.74643
23	35.70853	-84.74655



# Watts Bar Fish Attractors 2012 Whites Creek

#	Lat	Long
30	35.77020	-84.74370
31	35.77105	-84.74328
32	35.75942	-84.76136
33	35.74949	-84.76010
34	35.73412	-84.75081
35	35.73371	-84.74989
36	35.76111	-84.70006
37	35.77049	-84.71337
38	35.77147	-84.74318
39	35.75902	-84.76092
40	35.76444	-84.76284



# Watts Bar Fish Attractors 2012

## Piney Creek

#	Lat	Long
1	35.65577	-84.85603
2	35.65440	-84.85664
3	35.65222	-84.85815
4	35.65193	-84.85772
5	35.65237	-84.85569
6	35.65273	-84.85568
7	35.65274	-84.85589
8	35.65692	-84.85660
9	35.65750	-84.85628
10	35.65785	-84.85094
11	35.67541	-84.84948
12	35.67640	-84.84871
13	35.67482	-84.84911
14	35.69290	-84.83242
15	35.68446	-84.80255
16	35.68567	-84.80392
17	35.69097	-84.79464
18	35.69063	-84.79537
19	35.69153	-84.79361
20	35.69247	-84.79270
21	35.69014	-84.79372
22	35.68774	-84.79478
23	35.69194	-84.79178
24	35.69227	-84.79219
25	35.68845	-84.79442
26	35.68901	-84.79598
27	35.67844	-84.80496
28	35.67736	-84.80704
29	35.68890	-84.84246

