



THE LABOR MARKET REPORT

THE TENNESSEE DEPARTMENT OF LABOR & WORKFORCE DEVELOPMENT

Phil Bredesen,
Governor

James G. Neeley,
Commissioner

February 2003 Data

PROFESSIONAL, SCIENTIFIC AND TECHNICAL SERVICES

Special Points of Interest:

- This is an analysis of NAICS Sector 54- Professional, Scientific, and Technical Services
- Tennessee Historical Civilian Labor Force Series, 1972 to Current
- County Unemployment Rates
- Civilian Labor Force Summary
- State Unemployment Insurance Activities

Chattanooga MSA 7

Johnson City, Kingsport, & Bristol MSA 8

Knoxville MSA 9

Memphis MSA 10

Nashville MSA 11

Consumer Price Index 12

This is the first of what will be a series of articles to help explain some of the new NAICS sectors and how they were compiled from the discontinued SIC industry codes. These articles will be more in depth and, it is hoped, help the readers better understand the data and their differences from the SIC codes.

Supersector 60 is Professional and Business Services. This supersector is comprised of three sectors. Sector 54 is Professional, Scientific, and Technical Services; Sector 55 is Management of Companies and Enterprises; and Sector 56 is Administrative and Support and Waste Management and Remediation Services.

The Professional, Scientific, and Technical Services sector, the second largest of the three sectors, comprises establishments that specialize in performing professional, scientific, and technical activities for others. These activities require a high degree of expertise and training. The establishments in this sector specialize ac-

ording to expertise and provide these services to clients in a variety of industries and, in some cases, to households. Activities performed include the following: legal advice and representation; accounting, bookkeeping, and payroll services; architectural, engineering, and specialized design services; computer services; consulting services; research services; marketing consulting and marketing research services and public opinion polling; advertising services; photographic services; translation and interpretation services; veterinary services; and other professional, scientific, and technical services.

Industries in subsector 541 are establishments engaged in processes where human capital is the major input. These establishments make available the knowledge and skills of their employees, often on an assignment basis, where an individual or team is responsible for the delivery of services to the client. The individual industries of this subsector are de-

finied on the basis of the particular expertise and training of the services provider.

This sector excludes establishments primarily engaged in providing a range of day-to-day office administrative services, such as financial planning, billing and record-keeping, personnel, and physical distribution and logistics. Such establishments are classified in Sector 56, Administrative and Support and Waste Management and Remediation Services.

Much of the composition of sector 54 was included in the services industries of the SIC codes. The old services industry has been broken down into many smaller NAICS sectors. Supersector 60, of which sector 54 is a part, is the largest non-governmental industry, in terms of employment, in Tennessee.

In Tennessee, the total employment for sector 54 in 2002 was 96,100 persons. This was a decline of 900 persons (0.9 percent decline) from the 2001 total employment.

NAICS SECTOR 541 AND THE CORRESPONDING SIC CODES

NAICS Code	1997 NAICS U.S. Description**	SIC Code	1987 SIC Description
541	Professional, Scientific, & Technical Services		
5411	Legal Services	6541	Title Abstract Offices
		*7389	Business Services, NEC
		8111	Legal Services
5412	Accounting, Tax Preparation, Bookkeeping, & Payroll Services	7291	Tax Return Preparation Services
		*7819	Services Allied to Motion Picture Production
		*8721	Accounting, Auditing, & Bookkeeping Services
5413	Architectural, Engineering, & Related Services	*0781	Landscape Counseling and Planning
		*1081	Metal Mining Services
		*1382	Oil & Gas Field Exploration Services
		*1481	Nonmetallic Minerals Services, Except Fuels
		*7389	Business Services, NEC
		8711	Engineering Services
		8712	Architectural Services
		*8713	Surveying Services
		*8734	Testing Laboratories
		*8748	Business Consulting Services, NEC
5414	Specialized Design Services	7336	Commercial Art and Graphic Design
		*7389	Business Services, NEC
		*8099	Health and Allied Services, NEC
5415	Computer Systems Design & Related Services	7371	Computer Programming Services
		7373	Computer Integrated Systems Design
		7376	Computer Facilities Management Services
		*7379	Computer Related Services, NEC
5416	Management, Scientific, & Technical Consulting Services	*0781	Landscape Counseling and Planning
		*4731	Arrangement of Transportation of Freight & Car
		*7361	Employment Agencies
		*8742	Management Consulting Services
		*8748	Business Consulting Services, NEC
		*8999	Services, NEC
5417	Scientific Research & Development Services	*3721	Aircraft (research and development)
		*3724	Aircraft Engines & Engine Parts (R&D)
		*3728	Aircraft Parts & Auxiliary Equipment, NEC
		*3761	Guided Missiles & Space Vehicles (R&D)
		*3764	Guided Missiles & Space Vehicle Propulsion Units & Propulsion Unit Parts (R&D)
		*3769	Guided Missile Space Vehicle Parts & Auxiliary Equipment, NEC (R&D)
		8731	Commercial Physical & Biological Research
		*8732	Commercial Economic, Sociological, & Educational Research
		*8733	Noncommercial Research Organizations
5418	Advertising & Related Services	*5199	Nondurable Goods, NEC
		7311	Advertising Agencies
		7312	Outdoor Advertising Services
		7313	Radio, Television, & Publishers' Advertising Representatives
		*7319	Advertising, NEC
		*7331	Direct Mail Advertising Services
		*7389	Business Services, NEC
		8743	Public Relations Services
5419	Other Professional, Scientific, and Technical Services	0741	Veterinary Services for Livestock
		0742	Veterinary Services for Animal Specialties
		7221	Photographic Studios, Portrait
		*7335	Commercial Photography
		*7389	Business Services, NEC
		*8099	Health and Allied Services, NEC
		*8732	Commercial Economic, Sociological, & Educational Research
		*8734	Testing Laboratories (veterinary testing)

Codes: * indicates part of a 1987 SIC **NAICS codes updated in 2002

STATEWIDE

HISTORICAL CIVILIAN LABOR FORCE

UNEMPLOYMENT RATES BY COUNTY**

(NUMBERS IN THOUSANDS)

(ALL DATA SEASONALLY ADJUSTED)

Year and Month	Civilian Labor Force							Unemployed Number	Rate (%)
	Total	Employment	Employed						
			Total	Manufacturing	Trade	Services			
1972	1,737.0	1,672.0	1,450.1	489.2	294.3	209.8	64.0	3.7 %	
1973	1,766.0	1,696.0	1,531.1	519.4	312.0	221.9	69.0	3.9	
1974	1,841.0	1,748.0	1,558.2	513.3	321.0	227.6	93.0	5.1	
1975	1,836.0	1,683.0	1,505.7	459.0	320.8	229.4	154.0	8.3	
1976	1,866.0	1,754.0	1,575.4	486.1	339.5	240.5	112.0	6.0	
1977	1,941.0	1,819.0	1,648.1	507.5	357.2	254.5	122.0	6.3	
1978	1,966.0	1,852.0	1,737.0	526.0	379.1	270.7	114.0	5.8	
1979	2,039.0	1,921.0	1,777.3	524.7	388.7	285.4	118.0	5.8	
1980	2,080.0	1,928.0	1,746.6	502.1	379.7	291.0	152.0	7.3	
1981	2,116.0	1,924.0	1,775.4	506.9	379.9	304.4	192.0	9.1	
1982	2,129.0	1,877.0	1,703.0	466.7	380.5	313.1	252.0	11.8	
1983	2,180.0	1,930.0	1,719.0	468.6	389.9	323.4	250.0	11.5	
1984	2,220.0	2,030.0	1,812.0	497.1	413.3	344.3	190.0	8.6	
1985	2,253.0	2,073.0	1,867.8	492.4	435.3	360.2	180.0	8.0	
1986	2,290.0	2,106.0	1,929.8	490.5	452.1	384.7	184.0	8.0	
1987	2,334.0	2,180.0	2,011.6	497.4	477.2	408.9	154.0	6.6	
1988	2,338.0	2,203.0	2,092.1	511.9	495.6	440.3	135.0	5.8	
1989	2,368.0	2,247.0	2,167.2	524.5	508.4	467.2	121.0	5.1	
1990	2,387.3	2,261.5	2,193.2	520.3	517.2	486.3	125.9	5.3	
1991	2,421.0	2,258.1	2,183.6	502.7	511.6	505.2	162.9	6.7	
1992	2,455.5	2,297.8	2,245.0	514.5	517.7	541.1	157.7	6.4	
1993	2,500.5	2,356.7	2,328.5	528.4	535.9	572.4	143.8	5.7	
1994	2,664.6	2,537.1	2,423.0	538.9	562.1	603.8	127.5	4.8	
1995	2,700.8	2,560.6	2,499.0	538.9	585.5	638.0	140.1	5.2	
1996	2,744.1	2,602.7	2,533.4	519.2	594.4	658.7	141.4	5.2	
1997	2,707.8	2,561.7	2,584.0	517.6	610.2	682.4	146.1	5.4	
1998	2,759.5	2,643.8	2,638.5	514.7	620.5	703.4	115.7	4.2	
1999	2,818.8	2,705.3	2,685.4	511.1	630.8	721.9	113.5	4.0	
2000	2,798.4	2,688.2	2,728.9	506.8	641.8	742.8	110.2	3.9	
2001	2,817.7	2,691.7	2,711.5	478.5	638.5	754.9	126.0	4.5	
2002	2,926.3	2,776.4	NA	NA	NA	NA	149.9	5.1	
2003									
January (r)	2,886.3	2,751.2	2,657.5	NA	NA	NA	135.1	4.7 %	
February (p)	2,888.6	2,752.2	2,657.1	NA	NA	NA	136.4	4.7	
March									
April									
May									
June									
July									
August									
September									
October									
November									
December									

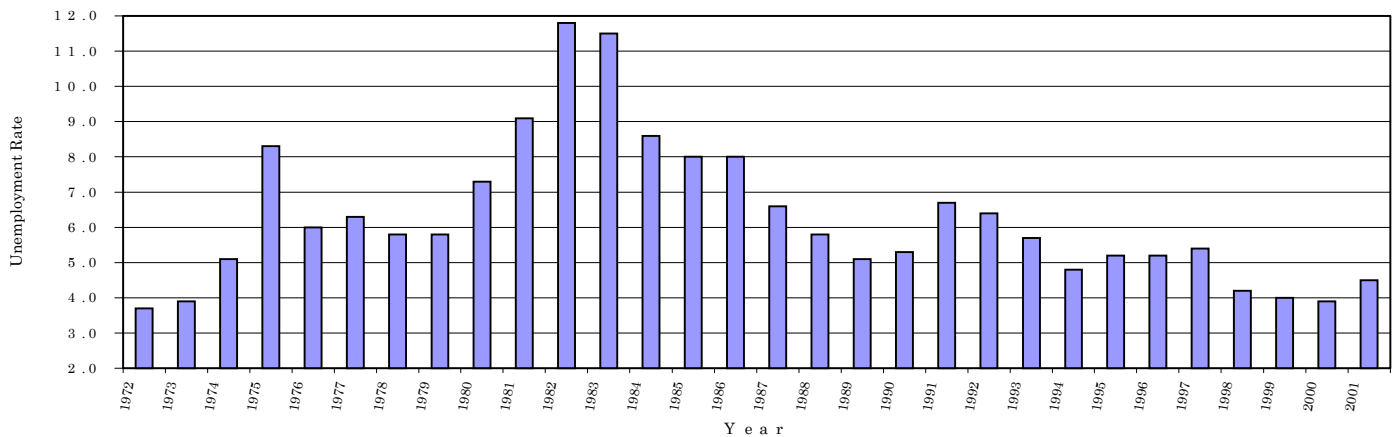
(r)=revised
(p)=preliminary

NA- Not available due to NAICS conversion

County	Feb 2002	Feb 2003	County	Feb 2002	Feb 2003
	Anderson	4.3		4.4	Lauderdale
Bedford	5.8	7.9	Lawrence	9.2	9.5
Benton	8.7	7.7	Lewis	10.7	10.8
Bledsoe	6.1	9.8	Lincoln	5.5	4.8
Blount	4.5	3.9	Loudon	4.2	3.5
Bradley	5.9	4.9	Macon	8.2	9.8
Campbell	6.8	6.3	Madison	5.9	4.8
Cannon	5.3	5.4	Marion	5.5	5.3
Carroll	12.0	11.6	Marshall	7.2	13.2
Carter	6.8	6.9	Maury	5.1	6.2
Cheatham	3.8	3.3	McMinn	9.3	6.7
Chester	6.4	4.7	McNairy	7.7	7.8
Claiborne	6.3	4.7	Meigs	9.8	7.7
Clay	11.4	11.9	Monroe	9.3	7.6
Cocke	11.4	11.0	Montgomery	5.5	3.7
Coffee	5.7	4.2	Moore	2.4	2.1
Crockett	8.8	10.4	Morgan	14.1	9.0
Cumberland	7.9	6.5	Obion	5.0	7.7
Davidson	3.9	3.6	Overton	9.8	6.7
Decatur	9.8	9.7	Perry	9.0	6.8
DeKalb	5.4	4.6	Pickett	12.7	9.1
Dickson	6.4	4.8	Polk	7.5	8.0
Dyer	9.8	6.8	Putnam	7.0	4.8
Fayette	7.4	5.7	Rhea	6.6	5.3
Fentress	11.8	9.7	Roane	6.5	4.5
Franklin	4.7	4.1	Robertson	5.2	5.0
Gibson	10.3	9.2	Rutherford	4.1	3.5
Giles	8.4	9.2	Scott	14.6	12.1
Grainger	9.1	7.7	Sequatchie	6.5	5.4
Greene	8.8	8.1	Sevier	12.0	11.1
Grundy	6.5	6.3	Shelby	5.3	4.9
Hamblen	6.9	4.2	Smith	5.0	6.5
Hamilton	3.7	3.4	Stewart	10.3	7.3
Hancock	10.9	6.3	Sullivan	5.3	4.8
Hardeman	11.0	9.1	Sumner	5.0	4.2
Hardin	8.6	10.2	Tipton	6.4	5.9
Hawkins	7.0	6.1	Trousdale	12.3	9.8
Haywood	11.4	10.0	Unicoi	8.1	7.2
Henderson	8.3	7.9	Union	4.1	3.9
Henry	7.4	6.7	Van Buren	10.4	10.3
Hickman	8.1	7.0	Warren	8.9	6.4
Houston	13.2	8.9	Washington	5.7	4.7
Humphreys	10.1	7.1	Wayne	9.3	9.8
Jackson	9.1	8.5	Weakley	5.8	7.2
Jefferson	8.6	6.9	White	6.9	8.2
Johnson	11.6	10.4	Williamson	3.1	2.6
Knox	2.9	2.7	Wilson	4.8	4.1
Lake	8.1	6.6			

**Data Not Seasonally Adjusted

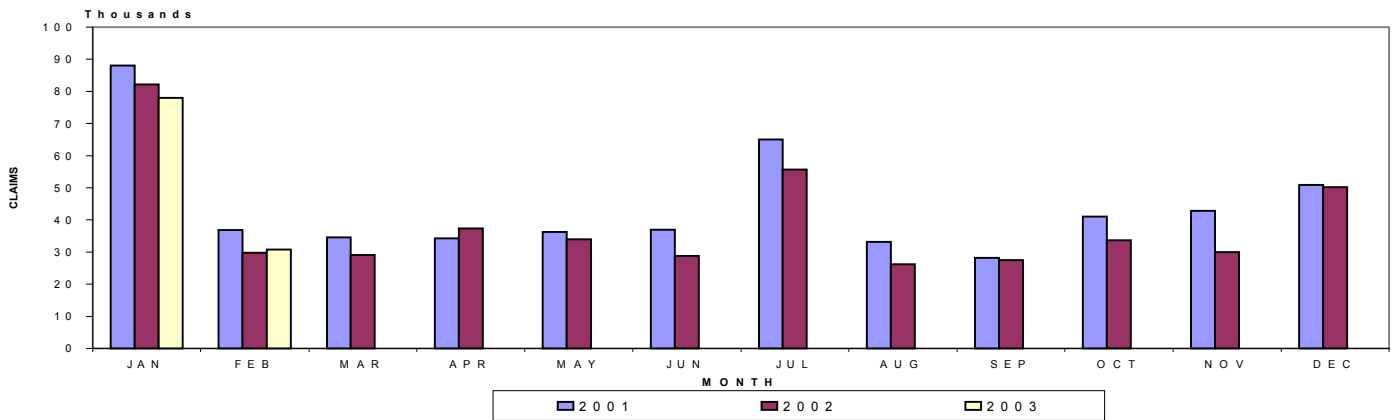
Unemployment Rates 1972 - 2001



STATEWIDE

UNEMPLOYMENT INSURANCE ACTIVITIES

MONTHLY INITIAL CLAIMS



BENEFIT PROGRAMS

STATE BENEFIT PROGRAM

CLAIMS	Feb. 2002	Jan. 2003	Feb. 2003
Initial Claims	29,738	78,044	30,712
Continued Weeks Claimed	300,028	345,225	284,060
Nonmonetary Determinations	6,476	6,335	6,887
Appeals Decisions	1,825	2,114	2,142
Lower Authority	1,569	1,840	1,851
Higher Authority	256	274	291

FEDERAL BENEFIT PROGRAMS

FORMER FEDERAL EMPLOYEES	Feb. 2002	Jan. 2003	Feb. 2003
Benefits Paid	\$325,264	\$652,140	\$503,514
Benefit Weeks Claimed	1,094	2,361	1,716
Initial Claims	95	252	140
Continued Weeks Claimed	1,119	2,500	1,680
Appeals Decisions	1	9	11

BENEFITS

Amount Paid	\$57,793,252	\$60,767,230	\$55,763,669
Benefit Weeks Paid	304,109	310,682	284,556
Average Weekly Benefit Amount	\$206	\$208	\$207
First Payments	25,320	39,711	16,532
Final Payments	6,349	6,723	6,021
Average Weeks Duration	12	14	14
Trust Fund Balance*	\$535,284,948	\$535,583,473	\$501,359,878

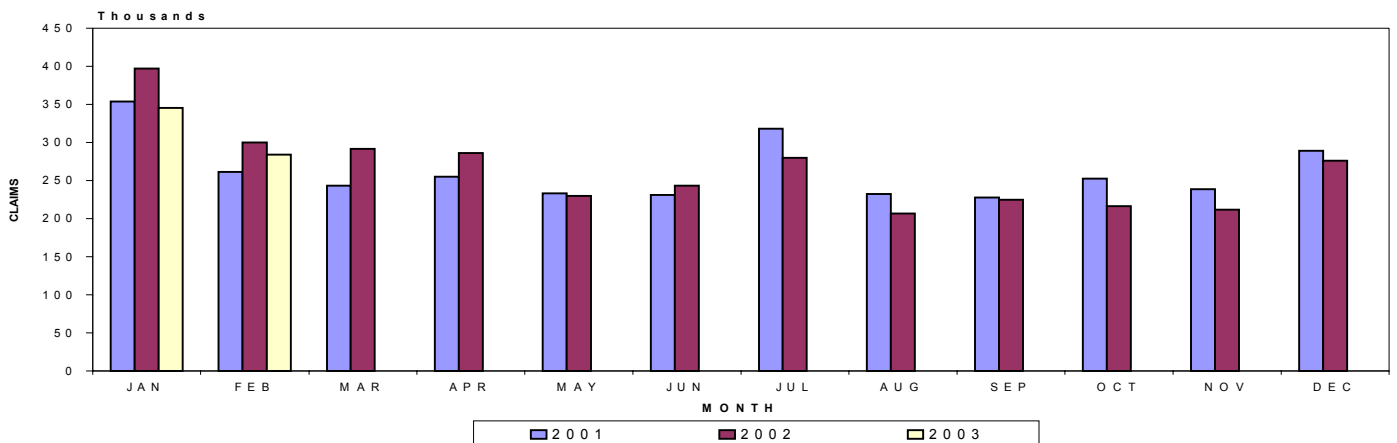
FORMER MILITARY PERSONNEL

Benefits Paid	\$360,257	\$380,950	\$362,136
Benefit Weeks Claimed	1,281	1,310	1,288
Initial Claims	84	137	88
Continued Weeks Claimed	1,298	1,472	1,308
Appeals Decisions	0	3	3

*Trust Fund includes one time deposit in March 2002 of \$162 million of Reed Act funds.

CONTINUED WEEKS CLAIMED

MONTHLY CONTINUED WEEKS CLAIMED



STATEWIDE

ESTIMATED NONFARM EMPLOYMENT (in thousands)

Industry	February 2002	Revised January 2003	Preliminary February 2003	Net Change	
				Feb. 2002 Feb. 2003	Jan. 2003 Feb. 2003
Total Nonfarm	2,623.1	2,619.3	2,628.3	5.2	9.0
Total Private	2,208.3	2,208.3	2,208.8	0.5	0.5
Goods-Producing	543.1	525.9	523.8	-19.3	-2.1
Natural Resources & Mining	4.4	4.2	4.2	-0.2	0.0
Construction	109.9	105.4	105.2	-4.7	-0.2
Specialty Trade Contractors	68.3	65.7	65.6	-2.7	-0.1
Manufacturing	428.8	416.3	414.4	-14.4	-1.9
Durable Goods Manufacturing	259.8	253.0	252.7	-7.1	-0.3
Wood Product Manufacturing	17.3	17.4	17.3	0.0	-0.1
Nonmetallic Mineral Product Manufacturing	14.4	14.4	14.4	0.0	0.0
Primary Metal Manufacturing	13.5	12.0	12.0	-1.5	0.0
Fabricated Metal Product Manufacturing	41.4	41.3	41.4	0.0	0.1
Machinery Manufacturing	36.5	33.6	33.9	-2.6	0.3
Computer & Electronic Product Manufacturing	13.3	12.1	12.1	-1.2	0.0
Electrical Equipment & Appliance Manufacturing	25.3	23.7	22.7	-2.6	-1.0
Transportation Equipment Manufacturing	59.4	61.2	61.3	1.9	0.1
Motor Vehicle Parts Manufacturing	33.2	33.7	33.8	0.6	0.1
Furniture & Related Product Manufacturing	21.6	20.4	20.5	-1.1	0.1
Miscellaneous Manufacturing	17.1	16.9	17.1	0.0	0.2
Nondurable Goods Manufacturing	169.0	163.3	161.7	-7.3	-1.6
Food Manufacturing	35.4	36.2	35.9	0.5	-0.3
Animal Slaughtering & Processing	11.3	11.2	11.1	-0.2	-0.1
Bakeries & Tortilla Manufacturing	8.5	8.5	8.5	0.0	0.0
Beverage & Tobacco Product Manufacturing	6.4	6.3	6.3	-0.1	0.0
Textile Mills	8.4	7.3	7.3	-1.1	0.0
Textile Product Mills	3.8	3.5	3.6	-0.2	0.1
Apparel Manufacturing	12.5	10.2	9.9	-2.6	-0.3
Paper Manufacturing	20.1	19.3	19.2	-0.9	-0.1
Printing & Related Support Activities	20.6	20.1	20.2	-0.4	0.1
Chemical Manufacturing	28.3	28.1	28.0	-0.3	-0.1
Plastics & Rubber Products Manufacturing	30.3	29.4	28.9	-1.4	-0.5
Plastics Product Manufacturing	15.4	14.9	14.9	-0.5	0.0
Rubber Product Manufacturing	14.9	14.5	14.0	-0.9	-0.5
Service-Providing	2,080.0	2,093.4	2,104.5	24.5	11.1
Trade, Transportation, & Utilities	566.4	560.9	557.5	-8.9	-3.4
Wholesale Trade	125.0	126.4	126.7	1.7	0.3
Merchant Wholesalers, Durable Goods	63.2	63.0	63.0	-0.2	0.0
Merchant Wholesalers, Nondurable Goods	47.4	47.3	47.5	0.1	0.2
Retail Trade	305.1	301.7	298.6	-6.5	-3.1
Motor Vehicle & Parts Dealers	39.8	40.6	40.7	0.9	0.1
Furniture & Home Furnishings Stores	8.8	8.8	8.8	0.0	0.0
Building Material, Garden Equipment, & Supplies	22.4	23.6	23.7	1.3	0.1
Food & Beverage Stores	48.3	47.4	47.0	-1.3	-0.4
Health & Personal Care Stores	18.2	18.6	18.6	0.4	0.0
Gasoline Stations	24.7	23.3	23.2	-1.5	-0.1
Clothing & Clothing Accessories Stores	25.8	27.3	26.1	0.3	-1.2
Sporting Goods, Hobby, Book, & Music Stores	11.8	13.2	12.4	0.6	-0.8
General Merchandise Stores	68.8	69.1	68.4	-0.4	-0.7
Miscellaneous Store Retailers	18.7	19.1	19.1	0.4	0.0
Nonstore Retailers	10.0	9.4	9.4	-0.6	0.0
Transportation, Warehousing, & Utilities	136.3	132.8	132.2	-4.1	-0.6
Utilities	3.5	3.5	3.5	0.0	0.0
Transportation & Warehousing	132.8	129.3	128.7	-4.1	-0.6
Truck Transportation	59.8	57.1	56.9	-2.9	-0.2
Information	53.9	52.1	51.9	-2.0	-0.2
Publishing Industries (except internet)	15.5	15.7	15.6	0.1	-0.1
Telecommunications	18.2	17.1	17.0	-1.2	-0.1
Financial Activities	137.6	137.6	138.0	0.4	0.4
Finance & Insurance	103.6	102.6	102.8	-0.8	0.2
Real Estate, Rental, & Leasing	34.0	35.0	35.2	1.2	0.2
Professional & Business Services	293.4	305.5	305.6	12.2	0.1
Professional, Scientific, & Technical Services	96.9	95.7	95.7	-1.2	0.0
Management of Companies & Enterprises	23.0	23.1	22.9	-0.1	-0.2
Administrative, Support, & Waste Management	173.5	186.7	187.0	13.5	0.3
Educational & Health Services	291.2	302.5	304.9	13.7	2.4
Educational Services	38.0	38.4	39.5	1.5	1.1
Health Care & Social Assistance	253.2	264.1	265.4	12.2	1.3
Ambulatory Health Care Services	89.1	93.0	93.4	4.3	0.4
Hospitals	82.8	86.1	86.6	3.8	0.5
Nursing & Residential Care Facilities	46.1	48.7	48.9	2.8	0.2
Social Assistance	35.2	36.3	36.5	1.3	0.2
Leisure & Hospitality	223.1	223.9	226.3	3.2	2.4
Arts, Entertainment, & Recreation	21.3	21.1	21.8	0.5	0.7
Accommodation & Food Services	201.8	202.8	204.5	2.7	1.7
Accommodation	32.9	30.2	31.3	-1.6	1.1
Food Services & Drinking Places	168.9	172.6	173.2	4.3	0.6
Other Services	99.6	99.9	100.8	1.2	0.9
Repair & Maintenance	22.0	23.0	23.3	1.3	0.3
Personal & Laundry Services	24.2	24.5	24.6	0.4	0.1
Government	414.8	411.0	419.5	4.7	8.5
Federal Government	52.4	51.9	52.6	0.2	0.7
State & Local Government	362.4	359.1	366.9	4.5	7.8
State Government	98.9	95.5	101.4	2.5	5.9
State Government Educational Services	53.8	50.3	56.2	2.4	5.9
Local Government	263.5	263.6	265.5	2.0	1.9
Local Government Educational Services	134.0	132.4	134.0	0.0	1.6

HOURS AND EARNINGS OF PRODUCTION WORKERS

AVERAGE WEEKLY EARNINGS

Industry	Feb. 2002	Jan. 2003	Feb. 2003
Manufacturing	\$516.50	\$530.32	\$537.60
Durable Goods Manufacturing	\$521.40	\$534.60	\$540.40
Fabricated Metal Product Manufacturing	\$554.00	\$596.16	\$604.40
Machinery Manufacturing	\$476.41	\$536.69	\$533.76
Nondurable Goods Manufacturing	\$508.40	\$522.21	\$533.60
Food Manufacturing	\$531.45	\$541.75	\$564.70

AVERAGE WEEKLY HOURS

Industry	Feb. 2002	Jan. 2003	Feb. 2003
Manufacturing	39.7	39.4	40.0
Durable Goods Manufacturing	39.5	39.6	40.0
Fabricated Metal Product Manufacturing	40.0	41.4	41.2
Machinery Manufacturing	35.5	38.5	38.4
Nondurable Goods Manufacturing	40.0	39.0	40.0
Food Manufacturing	40.6	40.1	41.4

AVERAGE HOURLY EARNINGS

Industry	Feb. 2002	Jan. 2003	Feb. 2003
Manufacturing	\$13.01	\$13.46	\$13.44
Durable Goods Manufacturing	\$13.20	\$13.50	\$13.51
Fabricated Metal Product Manufacturing	\$13.85	\$14.40	\$14.67
Machinery Manufacturing	\$13.42	\$13.94	\$13.90
Nondurable Goods Manufacturing	\$12.71	\$13.39	\$13.34
Food Manufacturing	\$13.09	\$13.51	\$13.64

NONFARM EMPLOYMENT AND LABOR FORCE IN TENNESSEE

Tennessee's seasonally adjusted estimated unemployment rate for February 2003 was 4.7 percent, unchanged from the January 2003 rate. This is the 26th consecutive month that the Tennessee unemployment rate was lower than the national rate.

The United States estimated unemployment rate was 5.8 percent in February 2003. In February 2002, the national unemployment rate was 5.6 percent, and the state unemployment rate was 5.3 percent.

Across Tennessee, the unemployment rate decreased in 65 counties, increased in 18 counties, and remained the same in 12 counties. The lowest rate occurred in Moore County at 2.1 percent, unchanged from the previous month. The highest rate was Marshall County's 13.2 percent, down from 14.1 percent in January 2003. *(Continued on Page 6)*

CIVILIAN LABOR FORCE

CIVILIAN LABOR FORCE SUMMARY

	February 2002				Revised January 2003				Preliminary February 2003			
	Labor Force	Employment	Unemployed	Rate	Labor Force	Employment	Unemployed	Rate	Labor Force	Employment	Unemployed	Rate
Seasonally Adjusted												
U.S.	144,510,000	136,450,000	8,060,000	5.6	145,838,000	137,536,000	8,302,000	5.7	145,858,000	137,408,000	8,450,000	5.8
TENNESSEE	2,910,500	2,755,200	155,300	5.3	2,886,300	2,751,200	135,100	4.7	2,888,600	2,752,200	136,400	4.7
Not Seasonally Adjusted												
U.S.	144,266,000	135,443,000	8,823,000	6.1	145,302,000	135,907,000	9,395,000	6.5	145,693,000	136,433,000	9,260,000	6.4
TENNESSEE	2,880,900	2,716,300	164,600	5.7	2,845,900	2,692,600	153,300	5.4	2,859,500	2,713,300	146,200	5.1
Metropolitan Statistical Area												
CHATANOOGA	237,100	228,300	8,800	3.7	233,000	224,800	8,200	3.5	235,800	227,700	8,100	3.4
TRI-CITIES	230,100	216,300	13,800	6.0	228,000	215,300	12,700	5.6	229,300	216,700	12,600	5.5
KNOXVILLE	367,800	351,400	16,400	4.5	363,700	348,200	15,500	4.3	367,700	352,800	14,900	4.1
MEMPHIS	574,200	543,700	30,500	5.3	565,800	535,000	30,800	5.4	572,500	544,000	28,500	5.0
NASHVILLE	678,000	649,900	28,100	4.1	667,500	641,500	26,000	3.9	679,500	654,600	24,900	3.7

(Continued from Page 5)

Total nonfarm employment increased by 5,200 jobs from February 2002 to February 2003. During this period there was growth in educational/health services (up 13,700 jobs), professional/business services (up 12,200 jobs), leisure/hospitality (up 3,200 jobs), state government educational services (up 2,400 jobs), local government (up 2,000 jobs), transportation equipment manufacturing (up 1,900 jobs),

and wholesale trade (up 1,700 jobs).

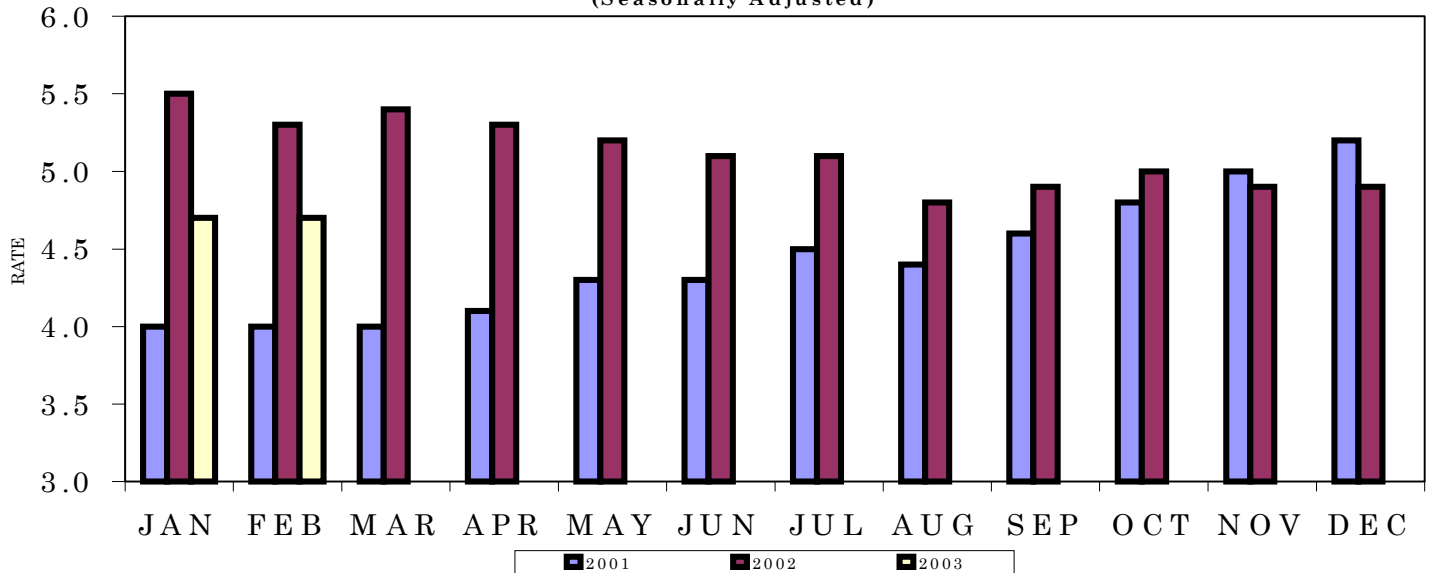
Over the year, the largest job losses occurred in retail trade (down 6,500 jobs); construction (down 4,700 jobs); transportation/warehousing/utilities (down 4,100 jobs); machinery manufacturing, apparel manufacturing, and electrical equipment/appliance manufacturing (all three down 2,600 jobs); and information (down 2,000 jobs).

During the past month, total employment increased by 9,000 jobs.

There were seasonal increases in state government educational services (up 5,900 jobs); educational/health services and leisure/hospitality (both up 2,400 jobs), and local government (up 1,900 jobs). There were declines in retail trade (down 3,100 jobs), which included a drop of 1,200 jobs in clothing/clothing accessories stores; and electrical equipment/appliance manufacturing (down 1,000 jobs).

TENNESSEE UNEMPLOYMENT RATES

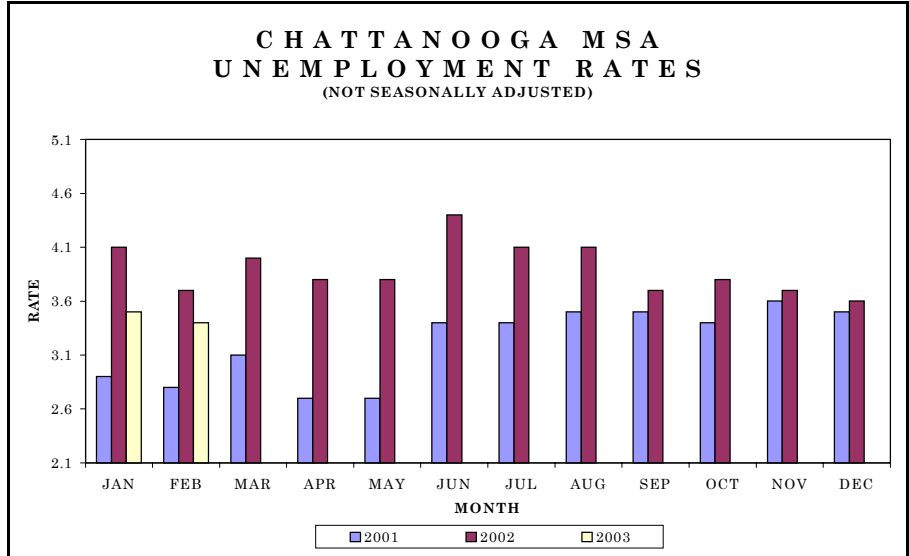
(Seasonally Adjusted)



The data from all the nonfarm employment estimates tables include all full- and part-time nonagricultural wage and salary employees who worked during, or received pay for, any part of the pay period which includes the 12th of the month. This is a count of jobs by place of work. Agricultural workers, proprietors, self-employed persons, workers in private households, and unpaid family workers are excluded. These numbers may not add due to rounding. Data are based on the 2002 benchmark.

Total nonfarm employment increased by 1,100 jobs from January to February. There were seasonal increases in state government (up 400 jobs); local government (up 300 jobs); leisure/hospitality (up 300 jobs), which includes an increase of 200 jobs in accommodation/food services; and professional/business services (up 200 jobs).

During the past 12 months total employment decreased by 1,200 jobs. During that time goods-producing jobs decreased by 2,600 while service-providing jobs increased by 1,400.



HOURS AND EARNINGS OF PRODUCTION WORKERS

CHATTANOOGA MSA

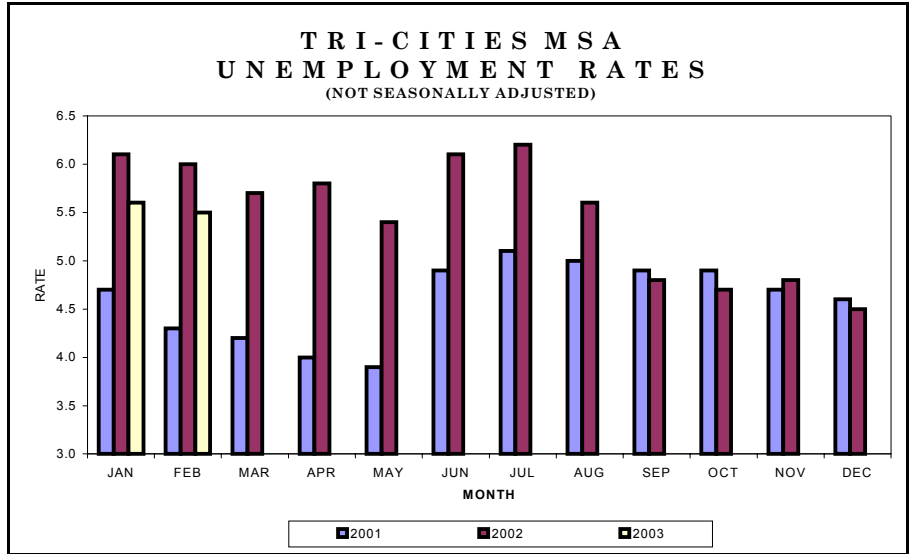
Industry	Average Weekly Earnings			Average Weekly Hours			Average Hourly Earnings		
	Feb. 2002	Jan. 2003	Feb. 2003	Feb. 2002	Jan. 2003	Feb. 2003	Feb. 2002	Jan. 2003	Feb. 2003
Manufacturing	\$541.86	\$541.43	\$535.53	42.7	42.2	41.1	\$12.69	\$12.83	\$13.03
Durable Goods Manufacturing	\$596.63	\$556.78	\$553.78	42.8	39.6	40.1	\$13.94	\$14.06	\$13.81
Nondurable Goods Manufacturing	\$504.38	\$530.08	\$522.91	42.6	44.1	41.9	\$11.84	\$12.02	\$12.48

ESTIMATED NONFARM EMPLOYMENT (in thousands)

Industry	February 2002	Revised January 2003	Preliminary February 2003	Net Change	
				Feb. 2002 - Feb. 2003	Jan. 2003 - Feb. 2003
Total Nonfarm	230.9	228.6	229.7	-1.2	1.1
Total Private	195.5	193.6	194.0	-1.5	0.4
Goods-Producing	47.2	44.7	44.6	-2.6	-0.1
Natural Resources & Mining	0.2	0.3	0.3	0.1	0.0
Construction	8.4	8.2	8.1	-0.3	-0.1
Manufacturing	38.6	36.2	36.2	-2.4	0.0
Durable Goods Manufacturing	16.4	15.4	15.3	-1.1	-0.1
Nondurable Goods Manufacturing	22.2	20.8	20.9	-1.3	0.1
Food Manufacturing	7.3	7.0	6.9	-0.4	-0.1
Textile Mills	6.1	5.7	5.6	-0.5	-0.1
Service-Providing	183.7	183.9	185.1	1.4	1.2
Trade, Transportation, & Utilities	54.2	54.4	54.3	0.1	-0.1
Wholesale Trade	8.2	8.2	8.1	-0.1	-0.1
Retail Trade	26.1	26.1	26.1	0.0	0.0
General Merchandise Stores	5.8	5.7	5.6	-0.2	-0.1
Transportation, Warehousing, & Utilities	19.9	20.1	20.1	0.2	0.0
Information	2.6	2.6	2.5	-0.1	-0.1
Financial Activities	18.0	18.1	18.2	0.2	0.1
Professional & Business Services	23.7	24.1	24.3	0.6	0.2
Administrative, Support, & Waste Management	12.3	12.5	12.7	0.4	0.2
Educational & Health Services	21.7	21.8	21.9	0.2	0.1
Leisure & Hospitality	17.7	17.5	17.8	0.1	0.3
Accommodation & Food Services	15.7	15.6	15.8	0.1	0.2
Other Services	10.4	10.4	10.4	0.0	0.0
Government	35.4	35.0	35.7	0.3	0.7
Federal Government	6.9	7.1	7.1	0.2	0.0
State & Local Government	28.5	27.9	28.6	0.1	0.7
State Government	6.5	6.0	6.4	-0.1	0.4
Local Government	22.0	21.9	22.2	0.2	0.3

Total nonfarm employment increased by 1,000 jobs from January to February. There were seasonal increases in state government (up 800 jobs) and local government (up 200 jobs). This was partially offset by a decline of 200 jobs in durable goods manufacturing

During the past 12 months, total employment increased by 700, with goods-producing jobs decreasing by 1,200 and service-providing jobs increasing by 1,900.



HOURS AND EARNINGS OF PRODUCTION WORKERS

TRI-CITIES MSA

Industry	Average Weekly Earnings			Average Weekly Hours			Average Hourly Earnings		
	Feb. 2002	Jan. 2003	Feb. 2003	Feb. 2002	Jan. 2003	Feb. 2003	Feb. 2002	Jan. 2003	Feb. 2003
	Manufacturing	\$505.04	\$507.20	\$508.44	38.7	38.6	38.2	\$13.05	\$13.14
Durable Goods Manufacturing	\$511.31	\$512.31	\$495.18	38.3	38.9	37.4	\$13.35	\$13.17	\$13.24
Nondurable Goods Manufacturing	\$495.97	\$499.49	\$526.23	39.3	38.1	39.3	\$12.62	\$13.11	\$13.39

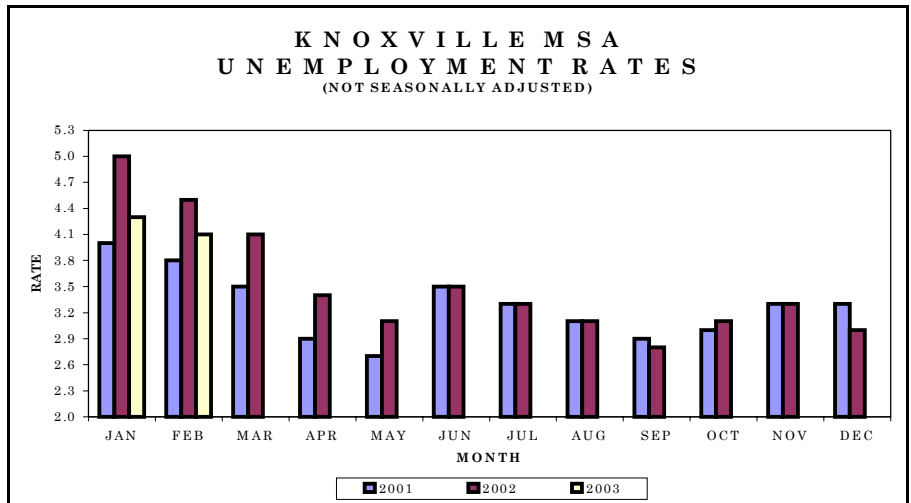
ESTIMATED NONFARM EMPLOYMENT (in thousands)

Industry	February 2002	Revised January 2003	Preliminary February 2003	Net Change	
				Feb. 2002 - Feb. 2003	Jan. 2003 - Feb. 2003
Total Nonfarm	194.1	193.8	194.8	0.7	1.0
Total Private	162.8	163.9	163.9	1.1	0.0
Goods-Producing	51.4	50.5	50.2	-1.2	-0.3
Natural Resources & Mining	0.2	0.2	0.2	0.0	0.0
Construction	10.2	9.9	9.9	-0.3	0.0
Manufacturing	41.0	40.4	40.1	-0.9	-0.3
Durable Goods Manufacturing	21.6	21.5	21.3	-0.3	-0.2
Nondurable Goods Manufacturing	19.4	18.9	18.8	-0.6	-0.1
Service-Providing	142.7	143.3	144.6	1.9	1.3
Trade, Transportation, & Utilities	35.7	36.6	36.6	0.9	0.0
Wholesale Trade	7.2	7.4	7.5	0.3	0.1
Retail Trade	23.0	23.4	23.3	0.3	-0.1
Food & Beverage Stores	4.5	4.4	4.4	-0.1	0.0
General Merchandise Stores	5.6	5.5	5.5	-0.1	0.0
Transportation, Warehousing, & Utilities	5.5	5.8	5.8	0.3	0.0
Information	3.7	3.7	3.7	0.0	0.0
Financial Activities	8.2	8.1	8.1	-0.1	0.0
Professional & Business Services	15.5	15.6	15.6	0.1	0.0
Educational & Health Services	24.9	25.5	25.6	0.7	0.1
Leisure & Hospitality	16.3	16.4	16.5	0.2	0.1
Food Services & Drinking Places	13.8	14.1	14.2	0.4	0.1
Other Services	7.1	7.5	7.6	0.5	0.1
Government	31.3	29.9	30.9	-0.4	1.0
Federal Government	3.5	3.4	3.4	-0.1	0.0
State & Local Government	27.8	26.5	27.5	-0.3	1.0
State Government	8.0	7.1	7.9	-0.1	0.8
Local Government	19.8	19.4	19.6	-0.2	0.2



Total nonfarm employment decreased by 500 jobs from January to February. There were seasonal decreases in leisure/hospitality (down 500 jobs), which included a decline of 700 jobs in accommodation/food services; local government (down 500 jobs); and retail trade and transportation/warehousing/utilities (both down 200 jobs). This was partially offset by increases in professional/business services and durable goods manufacturing (both up 300 jobs) while state government, wholesale trade, and educational/health services all increased by 200 jobs.

During the past 12 months, total employment increased by 2,200 jobs, with goods-producing industries decreasing by 300 jobs and service-providing industries increasing by 2,500 jobs.



HOURS AND EARNINGS OF PRODUCTION WORKERS

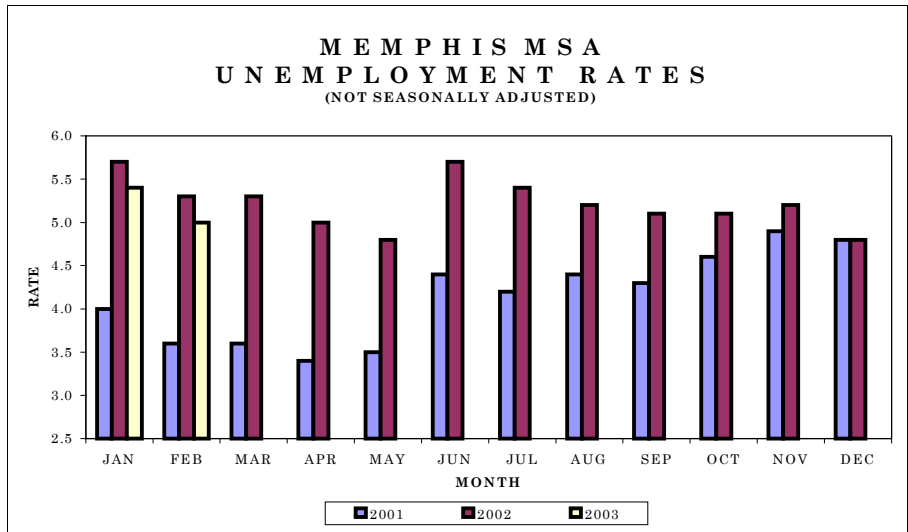
KNOXVILLE MSA

Industry	Average Weekly Earnings			Average Weekly Hours			Average Hourly Earnings		
	Feb. 2002	Jan. 2003	Feb. 2003	Feb. 2002	Jan. 2003	Feb. 2003	Feb. 2002	Jan. 2003	Feb. 2003
Manufacturing	\$561.97	\$562.20	\$573.47	41.2	40.1	40.3	\$13.64	\$14.02	\$14.23
Durable Goods Manufacturing	\$579.96	\$581.25	\$597.56	40.9	39.3	39.6	\$14.18	\$14.79	\$15.09
Nondurable Goods Manufacturing	\$525.84	\$529.15	\$529.15	41.8	41.6	41.6	\$12.58	\$12.72	\$12.72

ESTIMATED NONFARM EMPLOYMENT (in thousands)

Industry	February 2002	Revised January 2003	Preliminary February 2003	Net Change	
				Feb. 2002 Feb. 2003	Jan. 2003 Feb. 2003
Total Nonfarm	334.4	337.1	336.6	2.2	-0.5
Total Private	277.0	278.7	278.6	1.6	-0.1
Goods-Producing	57.5	56.9	57.2	-0.3	0.3
Natural Resources & Mining	0.5	0.6	0.6	0.1	0.0
Construction	14.9	14.9	14.9	0.0	0.0
Manufacturing	42.1	41.4	41.7	-0.4	0.3
Durable Goods Manufacturing	29.8	29.0	29.3	-0.5	0.3
Fabricated Metal Product Manufacturing	8.0	8.3	8.4	0.4	0.1
Transportation Equipment Manufacturing	9.2	9.6	9.6	0.4	0.0
Nondurable Goods Manufacturing	12.3	12.4	12.4	0.1	0.0
Service-Providing	276.9	280.2	279.4	2.5	-0.8
Trade, Transportation, & Utilities	71.3	72.1	71.9	0.6	-0.2
Wholesale Trade	14.2	14.0	14.2	0.0	0.2
Retail Trade	46.5	47.0	46.8	0.3	-0.2
Food & Beverage Stores	6.7	6.6	6.5	-0.2	-0.1
General Merchandise Stores	10.1	10.3	10.4	0.3	0.1
Transportation, Warehousing, & Utilities	10.6	11.1	10.9	0.3	-0.2
Information	6.1	5.9	5.8	-0.3	-0.1
Financial Activities	16.1	16.1	16.0	-0.1	-0.1
Professional & Business Services	38.6	39.5	39.8	1.2	0.3
Administrative, Support, & Waste Management	18.2	20.0	20.1	1.9	0.1
Educational & Health Services	34.9	35.5	35.7	0.8	0.2
Leisure & Hospitality	38.4	38.9	38.4	0.0	-0.5
Accommodation & Food Services	34.6	35.7	35.0	0.4	-0.7
Food Services & Drinking Places	28.2	30.3	30.0	1.8	-0.3
Other Services	14.1	13.8	13.8	-0.3	0.0
Government	57.4	58.4	58.0	0.6	-0.4
Federal Government	5.7	5.8	5.7	0.0	-0.1
State & Local Government	51.7	52.6	52.3	0.6	-0.3
State Government	20.2	20.0	20.2	0.0	0.2
Local Government	31.5	32.6	32.1	0.6	-0.5

Total nonfarm employment increased by 2,300 jobs from January to February. There were seasonal increases in federal government (up 1,300 jobs); state government (up 1,000 jobs); educational/health services (up 500 jobs), which includes an increase of 300 jobs in health care/social assistance; durable goods manufacturing (up 400 jobs); leisure/hospitality (up 300 jobs), which includes an increase of 200 jobs in food services/drinking places; and construction (up 300 jobs). This was partially offset by decreases in retail trade (down 800 jobs), which includes a decline of 300 jobs in general merchandise stores; and professional/business services and transportation/warehousing/utilities (both down 300 jobs).



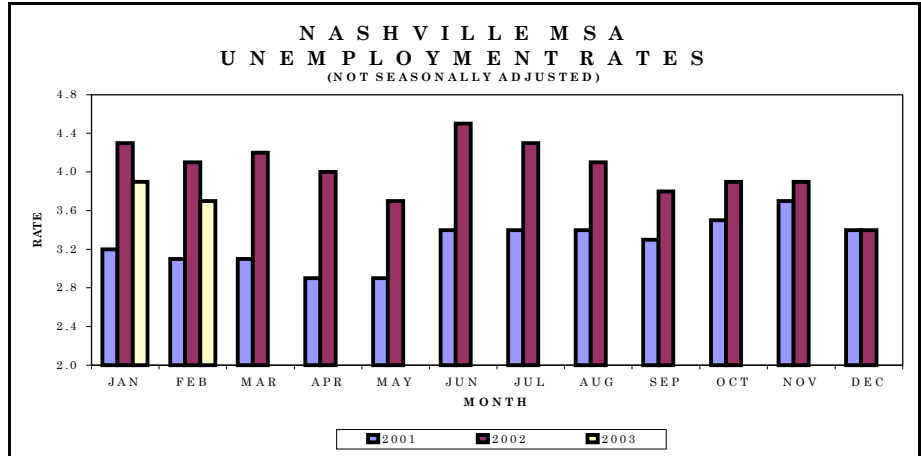
MEMPHIS MSA									
Industry	Average Weekly Earnings			Average Weekly Hours			Average Hourly Earnings		
	Feb. 2002	Jan. 2003	Feb. 2003	Feb. 2002	Jan. 2003	Feb. 2003	Feb. 2002	Jan. 2003	Feb. 2003
Manufacturing	\$555.86	\$610.95	\$592.32	39.2	40.3	39.7	\$14.18	\$15.16	\$14.92
Durable Goods Manufacturing	\$495.50	\$549.66	\$505.01	38.5	38.6	37.8	\$12.87	\$14.24	\$13.36
Nondurable Goods Manufacturing	\$601.46	\$660.53	\$663.73	39.7	41.7	41.2	\$15.15	\$15.84	\$16.11

ESTIMATED NONFARM EMPLOYMENT (in thousands)

Industry	February 2002	Revised January 2003	Preliminary February 2003	Net Change	
				Feb. 2002 - Feb. 2003	Jan. 2003 - Feb. 2003
Total Nonfarm	578.9	575.8	578.1	-0.8	2.3
Total Private	491.7	490.5	490.6	-1.1	0.1
Goods-Producing	76.1	73.3	73.9	-2.2	0.6
Natural Resources & Mining	0.1	0.1	0.1	0.0	0.0
Construction	23.2	22.9	23.2	0.0	0.3
Manufacturing	52.8	50.3	50.6	-2.2	0.3
Durable Goods Manufacturing	22.8	22.3	22.7	-0.1	0.4
Nondurable Goods Manufacturing	30.0	28.0	27.9	-2.1	-0.1
Service-Providing	502.8	502.5	504.2	1.4	1.7
Trade, Transportation, & Utilities	163.5	164.4	163.3	-0.2	-1.1
Wholesale Trade	35.8	35.6	35.6	-0.2	0.0
Retail Trade	66.7	68.7	67.9	1.2	-0.8
Food & Beverage Stores	9.8	10.2	10.2	0.4	0.0
General Merchandise Stores	16.4	16.4	16.1	-0.3	-0.3
Transportation, Warehousing, & Utilities	61.0	60.1	59.8	-1.2	-0.3
Truck Transportation	15.3	14.1	14.0	-1.3	-0.1
Warehousing & Storage	4.8	4.9	5.0	0.2	0.1
Information	9.7	9.4	9.4	-0.3	0.0
Financial Activities	31.2	31.4	31.5	0.3	0.1
Professional & Business Services	75.8	73.4	73.1	-2.7	-0.3
Administrative, Support, & Waste Management	51.8	51.2	51.1	-0.7	-0.1
Educational & Health Services	64.7	67.2	67.7	3.0	0.5
Health Care & Social Assistance	56.2	59.1	59.4	3.2	0.3
Hospitals	22.2	23.0	23.1	0.9	0.1
Leisure & Hospitality	48.0	49.0	49.3	1.3	0.3
Food Services & Drinking Places	35.3	36.5	36.7	1.4	0.2
Other Services	22.7	22.4	22.4	-0.3	0.0
Government	87.2	85.3	87.5	0.3	2.2
Federal Government	17.8	17.1	18.4	0.6	1.3
State & Local Government	69.4	68.2	69.1	-0.3	0.9
State Government	16.3	15.1	16.1	-0.2	1.0
Local Government	53.1	53.1	53.0	-0.1	-0.1



Total nonfarm employment increased by 3,700 jobs from January to February. There were seasonal increases in state government (up 1,600 jobs); professional/business services (up 1,400 jobs), which included an increase of 1,100 jobs in administrative/support/waste management; health care/social assistance, leisure/hospitality, and other services (all up 600 jobs); and educational services (up 300 jobs). This was partially offset by declines in retail trade (down 1,200 jobs), which included a drop of 500 jobs in general merchandise stores; and computer/electronic product manufacturing (down 200 jobs).



HOURS AND EARNINGS OF PRODUCTION WORKERS

NASHVILLE MSA

Industry	Average Weekly Earnings			Average Weekly Hours			Average Hourly Earnings		
	Feb. 2002	Jan. 2003	Feb. 2003	Feb. 2002	Jan. 2003	Feb. 2003	Feb. 2002	Jan. 2003	Feb. 2003
Manufacturing	\$544.10	\$564.21	\$589.03	39.2	38.2	40.4	\$13.88	\$14.77	\$14.58
Durable Goods Manufacturing	\$553.41	\$574.15	\$610.91	38.7	38.2	40.7	\$14.30	\$15.03	\$15.01
Nondurable Goods Manufacturing	\$521.80	\$540.26	\$537.77	40.2	38.1	39.6	\$12.98	\$14.18	\$13.58

ESTIMATED NONFARM EMPLOYMENT (in thousands)

Industry	February 2002	Revised January 2003	Preliminary February 2003	Net Change	
				Feb. 2002 - Feb. 2003	Jan. 2003 - Feb. 2003
Total Nonfarm	660.9	661.6	665.3	4.4	3.7
Total Private	571.5	573.7	575.8	4.3	2.1
Goods-Producing	110.1	107.4	107.0	-3.1	-0.4
Natural Resources & Mining	0.4	0.4	0.4	0.0	0.0
Construction	29.7	29.4	29.3	-0.4	-0.1
Manufacturing	80.0	77.6	77.3	-2.7	-0.3
Durable Goods Manufacturing	54.0	52.8	52.6	-1.4	-0.2
Computer & Electronic Product Manufacturing	6.0	5.3	5.1	-0.9	-0.2
Electrical Equipment & Appliance Manufacturing	6.0	5.8	5.9	-0.1	0.1
Transportation Equipment Manufacturing	16.1	17.0	17.0	0.9	0.0
Nondurable Goods Manufacturing	26.0	24.8	24.7	-1.3	-0.1
Service-Providing	550.8	554.2	558.3	7.5	4.1
Trade, Transportation, & Utilities	131.8	127.7	126.7	-5.1	-1.0
Wholesale Trade	32.6	31.0	31.1	-1.5	0.1
Retail Trade	74.1	72.9	71.7	-2.4	-1.2
Food & Beverage Stores	10.7	11.1	10.9	0.2	-0.2
General Merchandise Stores	16.2	16.1	15.6	-0.6	-0.5
Transportation, Warehousing, & Utilities	25.1	23.8	23.9	-1.2	0.1
Information	21.8	21.9	21.8	0.0	-0.1
Financial Activities	42.2	42.1	42.2	0.0	0.1
Professional & Business Services	85.4	90.8	92.2	6.8	1.4
Administrative, Support, & Waste Management	49.5	53.7	54.8	5.3	1.1
Educational & Health Services	86.2	89.1	90.0	3.8	0.9
Educational Services	18.2	18.8	19.1	0.9	0.3
Health Care & Social Assistance	68.0	70.3	70.9	2.9	0.6
Hospitals	25.5	26.3	26.4	0.9	0.1
Leisure & Hospitality	65.4	66.1	66.7	1.3	0.6
Accommodation & Food Services	58.0	57.7	58.2	0.2	0.5
Accommodation	12.5	11.8	12.1	-0.4	0.3
Food Services & Drinking Places	45.4	46.0	46.2	0.8	0.2
Other Services	28.6	28.6	29.2	0.6	0.6
Government	89.4	87.9	89.5	0.1	1.6
Federal Government	11.1	11.2	11.1	0.0	-0.1
State & Local Government	78.3	76.7	78.4	0.1	1.7
State Government	27.5	26.2	27.8	0.3	1.6
Local Government	50.8	50.5	50.6	-0.2	0.1

Tennessee Department of Labor & Workforce Development
 Employment Security Division, Research & Statistics
 11th Floor, Davy Crockett Tower
 500 James Robertson Parkway
 Nashville, TN 37245

**FIRST CLASS MAIL
 POSTAGE & FEES PAID
 BUREAU OF
 LABOR STATISTICS
 PERMIT NO. G-738**

Phone: 615-741-2284
 Fax: 615-532-9434
 Email: wayne.meisels@state.tn.us



We're on the Web
www.state.tn.us/labor-wfd
 Check out The Source at
www.state.tn.us/labor-wfd/source



Department of Labor and Workforce Development, February 2003, Publication Auth. No. 337311; 800 copies, in cooperation with the U.S. Department of Labor. This document was promulgated at a cost of \$0.63 per copy.

U.S. CONSUMER PRICE INDEX FEBRUARY 2003

Group	All urban consumers			Wage earners & clerical			Group	All urban consumers			Wage earners & clerical		
	Index	Percent change		Index	Percent change			Index	Percent change		Index	Percent change	
		Feb 2002 Feb 2003	Jan 2003 Feb 2003		Feb 2002 Feb 2003	Jan 2003 Feb 2003			Feb 2002 Feb 2003	Jan 2003 Feb 2003		Feb 2002 Feb 2003	Jan 2003 Feb 2003
U.S. City Average							Atlanta						
All items (1982-84=100)	183.1	3.0	0.8	179.2	3.2	0.8	All items (1982-84=100)	180.7	2.6	1.9	178.1	2.8	2
All items (1967=100)	548.5	-	-	533.7	-	-	All items (1967=100)	544.9	-	-	538.4	-	-
Food and beverages	178.9	1.4	0.4	178.3	1.4	0.5	Food and beverages	184.7	1.1	1.5	182.8	0.8	1.7
Housing	183.2	2.6	0.5	178.7	2.8	0.4	Housing	180.5	2.1	1.7	178.3	2.2	1.7
Shelter	211.6	2.7	0.3	205.5	2.9	0.3	Apparel	131.5	-6.4	7.5	127.8	-7.3	8.2
Rent of primary residence	203.7	3.0	0.2	203.0	3.0	0.2	Transportation	145	7.7	3.7	142.6	8.4	4.2
Apparel	120.6	-2.3	2.1	119.4	-2.5	1.8	Medical care	310.1	11.9	0.5	305.8	13.7	0.5
Transportation	158.9	7.1	2.2	158.2	7.5	2.3	Recreation 1/	106.6	-1	-0.7	102.5	-1.2	-0.5
Medical care	293.7	4.5	0.4	293.0	4.7	0.4	Education & communication 1/	108.4	-0.4	-0.4	107.8	-0.6	-0.3
Recreation 1/	107.2	1.2	0.3	105.4	0.9	0.3	Other goods and services	273.2	1.1	0.4	298.5	1.8	0.8
Education & communication 1/	109.7	2.2	0.0	109.2	1.9	0.0	Miami-Fort Lauderdale						
Other goods and services	297.5	2.5	0.3	306.4	2.7	0.3	All items (1982-84=100)	180.3	3	1.3	178	3.3	1.5
South Region							All items (Nov 1977=100)	290.6	-	-	289.2	-	-
All Items (1982-84=100)	176.4	3.2	0.7	173.9	3.1	0.8	Food and beverages	185.8	1.1	0.6	184.9	1.1	0.7
All Items (Dec 1977=100)	286.2	-	-	281.6	-	-	Housing	172.3	3	1.2	171	3.2	1.3
Food and beverages	176.3	1.7	0.3	175.3	1.7	0.5	Apparel	157.9	-5.3	1.7	171.2	-3.7	3.4
Housing	167.3	2.5	0.6	165.5	2.5	0.5	Transportation	165.1	7.8	3.2	163.2	8.6	3.5
Apparel	133.7	-1.8	1.4	132.2	-1.8	1.5	Medical care	272.3	4.3	0.7	272.2	4.9	0.7
Transportation	156.3	7.9	2.0	155.3	7.7	2.1	Recreation 1/	110.5	1.9	2	108.3	1.4	1.9
Medical care	285.6	5.1	0.4	286.6	5.5	0.5	Education & communication 1/	106.1	1.8	-0.7	106.8	1.9	-0.7
Recreation 1/	107.2	1.5	0.0	105.4	1.2	0.0	Other goods and services	240.1	1.7	0.4	233.2	2	0.5
Education & communication 1/	109.5	1.9	0.0	108.5	1.5	0.0	1/ Indexes on a December 1997=100 base. - Data not available						
Other goods and services	287	0.9	0.2	293.4	0.4	0.2							