



The Labor Market Report

Facts About Veterans Day

**October
2014**

**Bill Haslam,
Governor**

TENNESSEE

Department of Labor and Workforce Development

November 11, 1919 was the first anniversary of the end of World War I. Armistice Day originated on that anniversary to honor the fallen soldiers of that war. Congress passed a resolution in 1926 calling for an annual observance and it became an official national holiday on November 11, 1938. In 1954 President Eisenhower signed legislation changing the name to Veterans Day to honor Americans who served in all wars. Veterans Day honors military veterans with parades and speeches across the nation. The following information is about these men and women who fought and served to protect our country.

The Demographics

As of 2013, there were 19.6 million military veterans in the United States, 1.6 million of whom were female. Of all veterans, 11.3 percent were black and 79.3 percent were non-Hispanic white. Hispanic veterans accounted for 6 percent of the total. There were veterans who were Asian (1.4 percent), American Indian or Alaskan Native (0.7 percent), Native Hawaiian or Other Pacific Islander (0.2 percent), and some other race (1.2 percent). Others reported more than one race but are not included in this tabulation.

In 2013, 9.3 million veterans

were 65 years and older while 1.6 million were under 35. The states with the greatest number of veteran residents were California (1,743,333 veterans), Texas (1,483,389 veterans), Florida (1,455,002 veterans), and Pennsylvania (849,690 veterans). The state with the least number of veteran residents was Vermont (41,028 veterans). In 2013, the median wage for a veteran was \$36,381. During that time, the median wage for non-veterans was \$25,820.

When They Served

Veterans have served and protected Americans in both war and peacetime. There were 1.3 million living veterans who served in World War II; 2.1 million in the Korean War; 7.0 million in the Vietnam Era; and 5.2 million in both Gulf Wars. There were also 4.7 million who served during peacetime.

There are veterans who served in multiple conflicts. Veterans serving in three conflicts include 39,890 who served in World War II, the Korean War, and the Vietnam Era and 58,445 who served in the Vietnam Era and both Gulf Wars. Veterans who served in two conflicts include the 92,670 who served in both World War II and Korea as well as the 175,676 veterans who served in both the Korean War and the Vietnam Era. There were also 294,251 veterans who served in both the first Gulf
(Continued on Page 2)

Veterans in the Population, by State, in 2013

State	Estimated Population			Percent Veteran	State	Estimated Population			Percent Veteran
	Total	Veterans	Nonveterans			Total	Veterans	Nonveterans	
Alabama	3,712,441	355,396	3,357,045	9.6 %	Montana	787,251	82,659	704,592	10.5 %
Alaska	530,433	63,023	467,410	11.9	Nebraska	1,400,412	124,987	1,275,425	8.9
Arizona	4,996,082	498,885	4,497,197	10.0	Nevada	2,121,587	215,452	1,906,135	10.2
Arkansas	2,243,634	218,589	2,025,045	9.7	New Hampshire	1,051,145	106,113	945,032	10.1
California	29,027,762	1,743,333	27,284,429	6.0	New Jersey	6,869,974	384,726	6,485,248	5.6
Colorado	3,992,340	380,210	3,612,130	9.5 %	New Mexico	1,569,444	160,570	1,408,874	10.2 %
Connecticut	2,802,596	190,782	2,611,814	6.8	New York	15,388,848	804,646	14,584,202	5.2
Delaware	719,383	68,666	650,717	9.5	North Carolina	7,473,808	681,275	6,792,533	9.1
District of Columbia	531,804	27,846	503,958	5.2	North Dakota	557,235	48,892	508,343	8.8
Florida	15,471,123	1,455,002	14,016,121	9.4	Ohio	8,914,100	790,615	8,123,485	8.9
Georgia	7,455,459	645,822	6,809,637	8.7 %	Oklahoma	2,884,823	280,509	2,604,314	9.7 %
Hawaii	1,051,250	107,791	943,459	10.3	Oregon	3,068,447	293,024	2,775,423	9.5
Idaho	1,182,624	119,403	1,063,221	10.1	Pennsylvania	10,053,050	849,690	9,203,360	8.5
Illinois	9,843,918	655,291	9,188,627	6.7	Rhode Island	835,904	64,325	771,579	7.7
Indiana	4,980,863	420,596	4,560,267	8.4	South Carolina	3,669,343	366,802	3,302,541	10.0
Iowa	2,365,095	208,602	2,156,493	8.8 %	South Dakota	633,343	61,883	571,460	9.8 %
Kansas	2,157,934	197,302	1,960,632	9.1	Tennessee	4,986,689	465,435	4,521,254	9.3
Kentucky	3,367,777	293,162	3,074,615	8.7	Texas	19,318,495	1,483,389	17,835,106	7.7
Louisiana	3,498,393	268,553	3,229,840	7.7	Utah	1,999,931	131,033	1,868,898	6.6
Maine	1,066,267	119,540	946,727	11.2	Vermont	502,337	41,028	461,309	8.2
Maryland	4,557,277	400,934	4,156,343	8.8 %	Virginia	6,293,642	687,158	5,606,484	10.9 %
Massachusetts	5,295,537	340,282	4,955,255	6.4	Washington	5,326,316	541,551	4,784,765	10.2
Michigan	7,647,944	618,433	7,029,511	8.1	West Virginia	1,471,008	150,576	1,320,432	10.2
Minnesota	4,136,411	337,197	3,799,214	8.2	Wisconsin	4,434,521	368,679	4,065,842	8.3
Mississippi	2,245,235	183,405	2,061,830	8.2	Wyoming	440,329	48,979	391,350	11.1
Missouri	4,625,160	436,545	4,188,615	9.4					

Source: Bureau of the Census, American Community Survey, 2013. Population Estimate for civilians greater than 18 years old.

Holiday Honoring Military Service (Continued)

War (August 1990 to September 2001) and the Vietnam Era. There were 1,006,501 who served in both the first Gulf War and the second post-911 Gulf War (September 2001 to the present).

Differences in the Veteran Population

A high school diploma is the highest level of education attained for 29.1 percent of veterans compared to 27.1 percent for the non-veteran population. However, a bachelor's degree is the highest for a slightly lower percentage of veterans (26.8 percent) compared to non-veterans (29.9 percent). In 2013, there were 7.7 million veterans between 18 and 64 years old in the U.S. labor force. Of those, 7.1 million were employed.

In 2013, there were 3.6 million veterans with service-related disabilities. Of this number 957,504 had a disability rated at 70 percent disabled (where 0 is no disability and 100 is completely and totally disabled). The severity of the disability directly correlates to the benefits they are paid.

Veterans use their right to vote in elections to determine elected officials more than the general population. In the 2012 presidential election 70 percent (14.7 million) cast their ballots compared to 61.8 percent of all U.S. citizens. In the 2010 congressional election 57 percent (12.4 million) cast their ballots compared to 45.5 percent of all U.S. citizens.

TENNESSEE CIVILIAN LABOR FORCE 1984 to present

COUNTY UNEMPLOYMENT RATES

(NUMBERS IN THOUSANDS)

MONTHLY DATA NOT SEASONALLY ADJUSTED

Year and Month	Civilian Labor Force							
	Total	Employed					Unemployed	
		Employment	Nonfarm Employment			Number	Rate (%)	
			Total	**Manu- facturing	**Trade			**Services
1984	2,233.5	2,026.4	1,812.0	497.1	413.3	344.3	207.1	9.3 %
1985	2,255.7	2,070.0	1,867.8	492.4	435.3	360.2	185.7	8.2
1986	2,291.3	2,110.7	1,929.8	490.5	452.1	384.7	180.6	7.9
1987	2,324.1	2,166.5	2,011.6	497.4	477.2	408.9	157.6	6.8
1988	2,333.6	2,197.2	2,092.1	511.9	495.6	440.3	136.4	5.8
1989	2,364.9	2,241.3	2,167.2	524.5	508.4	467.2	123.6	5.2
1990	2,401.1	2,269.0	2,193.2	493.4	379.1	611.0	132.1	5.5
1991	2,425.4	2,266.0	2,183.6	480.3	373.0	626.7	159.4	6.6
1992	2,479.5	2,316.7	2,245.0	492.8	374.1	664.8	162.8	6.6
1993	2,543.3	2,391.6	2,328.5	502.8	382.5	709.8	151.7	6.0
1994	2,645.7	2,511.1	2,423.0	513.8	398.4	751.4	134.6	5.1
1995	2,718.0	2,574.0	2,498.9	518.0	412.6	795.0	144.0	5.3
1996	2,758.4	2,611.0	2,533.3	501.5	420.9	814.3	147.4	5.3
1997	2,788.3	2,640.0	2,584.0	498.0	430.5	849.7	148.3	5.3
1998	2,811.7	2,685.2	2,638.4	498.6	437.1	875.7	126.5	4.5
1999	2,838.7	2,722.1	2,685.3	494.7	443.6	900.8	116.6	4.1
2000	2,871.5	2,756.5	2,728.9	488.1	447.5	930.9	115.0	4.0
2001	2,863.5	2,728.5	2,688.3	454.2	446.6	921.5	135.0	4.7
2002	2,867.1	2,715.0	2,664.4	428.5	438.7	938.0	152.1	5.3
2003	2,896.1	2,731.4	2,667.5	414.1	440.8	950.3	164.8	5.7
2004	2,904.4	2,746.2	2,706.1	411.8	447.5	978.7	158.1	5.4
2005	2,942.3	2,778.5	2,743.1	408.8	454.6	1,005.6	163.8	5.6
2006	3,008.9	2,852.5	2,783.1	400.1	460.6	1,030.4	156.4	5.2
2007	3,021.5	2,874.2	2,797.4	380.0	463.5	1,052.8	147.3	4.9
2008	3,056.1	2,854.5	2,774.8	361.0	457.0	1,058.2	201.6	6.6
2009	3,051.6	2,734.3	2,619.8	309.2	427.8	1,025.3	317.3	10.4
2010	3,082.6	2,778.8	2,615.4	298.9	423.5	1,041.2	303.8	9.9
2011	3,118.8	2,828.3	2,661.4	304.4	427.1	1,076.8	290.4	9.3
2012	3,099.7	2,846.4	2,714.0	313.4	433.3	1,112.2	253.4	8.2
2013	3,070.3	2,818.3	2,749.7	318.8	437.2	1,139.2	252.0	8.2
2014								
January	3,018.3	2,800.8	2,733.4	318.0	437.3	1,131.0	217.5	7.2 %
February	3,016.8	2,795.5	2,752.7	318.4	436.7	1,143.6	221.3	7.3
March	3,031.1	2,818.2	2,776.4	318.7	438.1	1,157.8	212.9	7.0
April	3,004.3	2,828.6	2,802.8	321.1	441.5	1,172.9	175.7	5.8
May	3,046.0	2,852.9	2,817.3	323.3	445.5	1,181.1	193.1	6.3
June	3,071.7	2,845.1	2,791.6	324.5	446.5	1,186.8	226.6	7.4
July	3,069.7	2,831.8	2,784.3	323.5	447.8	1,177.8	237.9	7.7
August	3,010.4	2,787.3	2,806.1	325.3	446.4	1,185.8	223.1	7.4
September (r)	3,000.1	2,801.8	2,831.9	327.2	444.9	1,188.4	198.3	6.6
October (p)	3,020.1	2,829.3	2,842.2	327.9	447.5	1,188.8	190.8	6.3
November								
December								

(r)=revised

(p)=preliminary

Trade = Wholesale and Retail Trade

**These industries are not comparable to industry employment data before 1990 because of changes to NAICS coding system.

Services = Professional/Business Services, Educational/Health Services, Leisure/Hospitality, and Other Services.

County	Oct	Oct	County	Oct	Oct
	2013	2014		2013	2014
Anderson	7.7	6.2	Lauderdale	13.3	10.4
Bedford	7.9	5.9	Lawrence	11.8	8.8
Benton	10.1	8.3	Lewis	9.7	8.2
Bledsoe	9.9	7.7	Lincoln	5.9	4.4
Blount	6.9	5.3	Loudon	7.2	5.6
Bradley	7.4	5.8	Macon	8.6	5.3
Campbell	10.7	8.0	Madison	8.4	6.5
Cannon	6.8	5.3	Marion	8.3	7.4
Carroll	11.5	9.2	Marshall	9.6	7.2
Carter	8.2	6.1	Maury	8.2	6.5
Cheatham	6.2	5.5	McMinn	8.8	7.0
Chester	7.7	6.5	McNairy	11.7	8.6
Claiborne	11.3	8.1	Meigs	9.7	7.7
Clay	10.9	7.5	Monroe	10.4	7.2
Coke	10.1	8.0	Montgomery	8.5	7.0
Coffee	7.2	5.6	Moore	6.1	5.0
Crockett	9.9	7.6	Morgan	10.1	8.6
Cumberland	8.9	7.5	Obion	11.2	9.1
Davidson	6.5	5.2	Overton	8.1	6.6
Decatur	9.7	8.1	Perry	10.5	8.6
DeKalb	8.1	6.1	Pickett	12.3	10.9
Dickson	6.7	5.4	Polk	9.2	6.8
Dyer	10.6	7.7	Putnam	7.4	5.9
Fayette	9.7	7.8	Rhea	10.5	7.9
Fentress	8.8	7.3	Roane	7.8	6.1
Franklin	7.3	5.3	Robertson	6.3	6.1
Gibson	12.4	9.4	Rutherford	6.3	4.8
Giles	8.7	6.2	Scott	15.9	11.8
Grainger	9.7	7.6	Sequatchie	7.9	6.9
Greene	10.3	8.0	Sevier	7.4	5.9
Grundy	9.0	7.3	Shelby	9.8	7.9
Hamblen	8.6	6.9	Smith	6.6	5.1
Hamilton	7.7	6.2	Stewart	9.6	7.3
Hancock	12.3	9.4	Sullivan	7.6	6.1
Hardeman	11.7	8.6	Sumner	6.5	4.9
Hardin	10.1	7.4	Tipton	8.9	7.8
Hawkins	7.5	6.6	Trousdale	8.0	6.0
Haywood	11.4	8.6	Unicoi	8.5	6.9
Henderson	11.4	8.9	Union	7.7	6.1
Henry	10.3	7.9	Van Buren	11.3	9.0
Hickman	8.7	6.2	Warren	8.7	6.9
Houston	9.2	7.7	Washington	7.3	5.9
Humphreys	8.1	6.4	Wayne	10.6	9.2
Jackson	9.5	6.9	Weakley	10.8	8.5
Jefferson	9.2	6.5	White	10.8	7.5
Johnson	9.0	6.7	Williamson	5.6	4.5
Knox	6.5	5.1	Wilson	6.4	4.8
Lake	10.0	8.3			

*Data Not Seasonally Adjusted



Statewide

ESTIMATED NONFARM EMPLOYMENT (in thousands)

Industry	Revised		Preliminary	Net Change	
	October 2013	September 2014	October 2014	Oct. 2013 Oct. 2014	Sept. 2014 Oct. 2014
Total Nonfarm	2,782.7	2,831.9	2,842.2	59.5	10.3
Total Private	2,354.6	2,411.4	2,416.1	61.5	4.7
Goods Producing	431.6	445.2	445.7	14.1	0.5
Mining, Logging, & Construction	110.8	118.0	117.8	7.0	-0.2
Manufacturing	320.8	327.2	327.9	7.1	0.7
Durable Goods Manufacturing	200.9	209.4	210.1	9.2	0.7
Wood Product Manufacturing	10.9	11.2	11.0	0.1	-0.2
Nonmetallic Mineral Product Manufacturing	12.1	12.3	12.3	0.2	0.0
Primary Metal Manufacturing	10.0	10.1	10.1	0.1	0.0
Fabricated Metal Product Manufacturing	33.6	34.9	34.9	1.3	0.0
Machinery Manufacturing	25.5	27.1	27.1	1.6	0.0
Computer & Electronic Product Manufacturing	5.3	5.3	5.3	0.0	0.0
Electrical Equipment & Appliance Manufacturing	18.8	20.0	20.0	1.2	0.0
Transportation Equipment Manufacturing	61.7	65.1	66.2	4.5	1.1
Furniture & Related Product Manufacturing	8.7	8.8	8.7	0.0	-0.1
Miscellaneous Manufacturing Durable Goods	14.3	14.6	14.5	0.2	-0.1
Nondurable Goods Manufacturing	119.9	117.8	117.8	-2.1	0.0
Textile Mills, Products, & Apparel	10.4	10.1	10.0	-0.4	-0.1
Food Manufacturing	32.4	32.1	32.1	-0.3	0.0
Beverage & Tobacco Product Manufacturing	5.2	5.0	5.0	-0.2	0.0
Paper Manufacturing	14.7	14.4	14.4	-0.3	0.0
Printing & Related Support Activities	9.6	9.1	9.1	-0.5	0.0
Chemical Manufacturing	25.1	24.9	24.9	-0.2	0.0
Plastics & Rubber Products Manufacturing	20.1	20.2	20.2	0.1	0.0
Plastics Product Manufacturing	12.0	12.0	12.0	0.0	0.0
Rubber Product Manufacturing	8.1	8.2	8.2	0.1	0.0
Service Providing	2,351.1	2,386.7	2,396.5	45.4	9.8
Trade, Transportation, & Utilities	584.8	594.1	597.4	12.6	3.3
Wholesale Trade	123.0	126.7	127.7	4.7	1.0
Merchant Wholesalers, Durable Goods	62.4	63.8	64.4	2.0	0.6
Merchant Wholesalers, Nondurable Goods	41.7	43.1	43.4	1.7	0.3
Wholesale Electronic Markets	18.9	19.8	19.9	1.0	0.1
Retail Trade	315.9	318.2	319.8	3.9	1.6
Motor Vehicle & Parts Dealers	41.3	43.6	43.1	1.8	-0.5
Furniture & Home Furnishings Stores	8.6	8.5	8.7	0.1	0.2
Building Material, Garden Equipment, & Supplies	26.3	26.3	26.2	-0.1	-0.1
Food & Beverage Stores	52.4	53.5	53.4	1.0	-0.1
Health & Personal Care Stores	22.5	22.5	22.7	0.2	0.2
Gasoline Stations	21.3	20.8	20.6	-0.7	-0.2
Clothing & Clothing Accessories Stores	24.8	24.9	25.5	0.7	0.6
Sporting Goods, Hobby, Book, & Music Stores	11.3	11.1	11.5	0.2	0.4
General Merchandise Stores	70.9	68.8	69.1	-1.8	0.3
Miscellaneous Store Retailers	17.0	17.2	17.5	0.5	0.3
Nonstore Retailers	8.9	8.5	9.1	0.2	0.6
Transportation, Warehousing, & Utilities	145.9	149.2	149.9	4.0	0.7
Utilities	3.3	3.3	3.3	0.0	0.0
Transportation & Warehousing	142.6	145.9	146.6	4.0	0.7
Truck Transportation	57.3	58.9	59.0	1.7	0.1
Information	43.4	42.4	42.8	-0.6	0.4
Financial Activities	138.5	141.3	141.4	2.9	0.1
Finance & Insurance	105.6	106.5	106.3	0.7	-0.2
Real Estate, Rental, & Leasing	32.9	34.8	35.1	2.2	0.3
Professional & Business Services	360.9	374.6	378.0	17.1	3.4
Professional, Scientific, & Technical Services	114.2	117.5	119.2	5.0	1.7
Management of Companies & Enterprises	36.6	38.1	38.3	1.7	0.2
Administrative, Support, & Waste Management	210.1	219.0	220.5	10.4	1.5
Educational & Health Services	400.6	401.6	403.2	2.6	1.6
Educational Services	52.9	50.6	51.6	-1.3	1.0
Health Care & Social Assistance	347.7	351.0	351.6	3.9	0.6
Ambulatory Health Care Services	138.0	142.7	142.6	4.6	-0.1
Hospitals	102.4	101.0	101.3	-1.1	0.3
Nursing & Residential Care Facilities	60.7	60.6	60.9	0.2	0.3
Social Assistance	46.6	46.7	46.8	0.2	0.1
Leisure & Hospitality	289.9	305.2	301.3	11.4	-3.9
Arts, Entertainment, & Recreation	30.1	34.5	31.4	1.3	-3.1
Accommodation & Food Services	259.8	270.7	269.9	10.1	-0.8
Accommodation	33.0	36.6	36.2	3.2	-0.4
Food Services & Drinking Places	226.8	234.1	233.7	6.9	-0.4
Other Services	104.9	107.0	106.3	1.4	-0.7
Government	428.1	420.5	426.1	-2.0	5.6
Federal Government	48.7	48.6	48.7	0.0	0.1
State Government	97.3	96.0	97.4	0.1	1.4
State Government Educational Services	55.2	53.2	54.6	-0.6	1.4
Local Government	282.1	275.9	280.0	-2.1	4.1
Local Government Educational Services	142.4	136.1	140.5	-1.9	4.4

NONFARM EMPLOYMENT & LABOR FORCE NARRATIVE

Total nonfarm employment increased by 59,500 jobs from October 2013 to October 2014. There were large increases in professional/business services (up 17,100 jobs), which includes increases of 10,400 jobs in administrative/support/waste management and 5,000 jobs in professional/scientific/technical services; accommodation/food services (up 10,100 jobs), which includes increases of 6,900 jobs in food services/drinking places and 3,200 jobs in accommodation. There were smaller increases in mining/logging/construction (up 7,000 jobs); wholesale trade (up 4,700 jobs), which includes increases of 2,000 jobs in durable goods wholesalers and 1,700 jobs in nondurable goods wholesalers; ambulatory health care services (up 4,600 jobs); transportation equipment manufacturing (up 4,500 jobs); transportation/warehousing (up 4,000 jobs), which includes an increase of 1,700 jobs in truck transportation; and retail trade (up 3,900 jobs), which includes increases of 1,800 jobs in motor vehicle/parts dealers and 1,000 jobs in food/beverage stores.

These increases were partially offset by declines in local government educational services (down 1,900 jobs), general merchandise stores (down 1,800 jobs), educational services (down 1,300 jobs), and hospitals (down 1,100 jobs).

During October 2014 nonfarm employment increased by 10,300 jobs. There were increases in local government educational services (up 4,400 jobs); professional/business services (up 3,400 jobs), which includes increases of 1,700 jobs in professional/scientific/technical service and 1,500 jobs in administrative/support/waste management; retail trade (up 1,600 jobs); state government educational services (up 1,400 jobs); transportation equipment manufacturing (up 1,100 jobs); and educational services and wholesale trade (both up 1,000 jobs).

This was partially offset by a decrease in leisure/hospitality (down 3,900 jobs), which included a decline of 3,100 jobs in arts/entertainment/recreation.

Tennessee's seasonally adjusted estimated unemployment rate for October was 7.1 percent, down 0.2 percentage point from the revised September 2014 rate. The United States unemployment rate in October was 5.8 percent, down 0.1 percentage point from the September 2014 rate.

In October 2013, the national unemployment rate was 7.2 percent while the state rate was 8.1 percent.

Across Tennessee, the unemployment rate decreased in 80 counties, increased in ten counties, and remained the same in five counties. There were five counties with rates below 5.0 percent. In October 2014, the lowest rate was in Lincoln County at 4.4 percent, down 0.2 percentage point from the previous month, while the highest rate was in Scott County at 11.8 percent, down from 12.3 percent in September.

The data from all the nonfarm employment estimates tables include all full- and part-time nonfarm wage and salary employees who worked during or received pay for any part of the pay period that includes the 12th of the month. This is a count of jobs by place of work. Agricultural workers, proprietors, self-employed persons, workers in private households, and unpaid family workers are excluded. These numbers may not add due to rounding. Data are based on the 2013 benchmark.

CIVILIAN LABOR FORCE

CIVILIAN LABOR FORCE SUMMARY

October 2013

September 2014

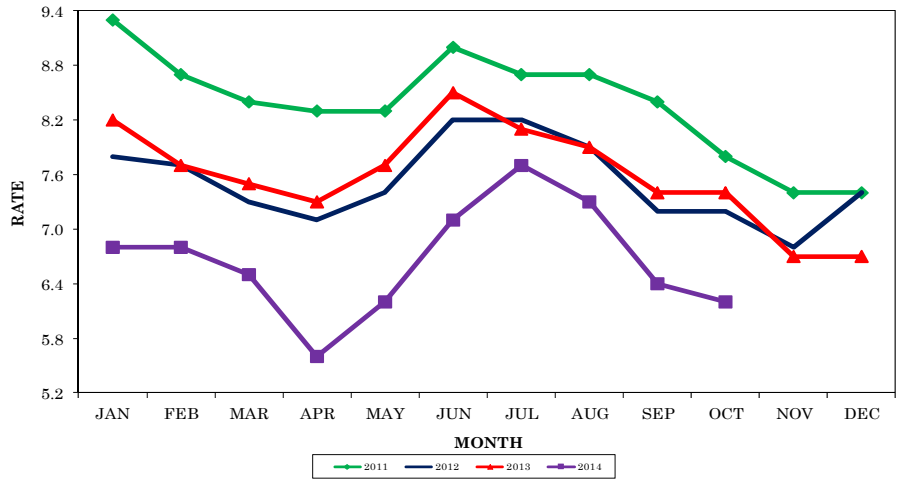
October 2014

	Labor Force	Employment	Unemployed	Rate	Labor Force	Employment	Unemployed	Rate	Labor Force	Employment	Unemployed	Rate
Seasonally Adjusted												
U.S.	154,625,000	143,485,000	11,140,000	7.2	155,862,000	146,600,000	9,262,000	5.9	156,278,000	147,283,000	8,995,000	5.8
TENNESSEE	3,043,300	2,797,800	245,500	8.1	3,004,000	2,784,300	219,700	7.3	3,001,500	2,789,400	212,100	7.1
Not Seasonally Adjusted												
U.S.	154,918,000	144,144,000	10,773,000	7.0	155,903,000	146,941,000	8,962,000	5.7	156,616,000	147,936,000	8,680,000	5.5
TENNESSEE	3,051,900	2,807,100	244,800	8.0	3,000,100	2,801,800	198,300	6.6	3,020,100	2,829,300	190,800	6.3
Metropolitan Statistical Areas												
Chattanooga	256,090	237,080	19,010	7.4	252,250	236,050	16,190	6.4	253,400	237,770	15,620	6.2
Clarksville	115,330	105,090	10,240	8.9	112,140	104,180	7,950	7.1	112,260	104,570	7,690	6.8
Cleveland	57,480	53,090	4,390	7.6	56,140	52,640	3,500	6.2	56,520	53,160	3,360	5.9
Jackson	56,150	51,510	4,640	8.3	54,820	51,150	3,670	6.7	55,000	51,430	3,570	6.5
Johnson City	95,620	88,280	7,340	7.7	92,650	86,660	6,000	6.5	93,450	87,800	5,650	6.0
Kingsport	143,700	132,720	10,970	7.6	140,840	131,800	9,040	6.4	141,420	132,930	8,490	6.0
Knoxville	356,190	331,990	24,210	6.8	355,300	335,540	19,760	5.6	357,570	338,610	18,950	5.3
Memphis	596,840	541,720	55,120	9.2	582,090	536,010	46,080	7.9	585,660	541,710	43,950	7.5
Morristown	61,180	55,680	5,510	9.0	59,140	54,900	4,250	7.2	60,090	55,970	4,120	6.8
Nashville	847,670	793,400	54,270	6.4	846,930	802,030	44,910	5.3	854,210	811,090	43,120	5.0
Micropolitan Statistical Areas												
Athens	23,620	21,540	2,080	8.8	22,900	21,250	1,650	7.2	23,100	21,490	1,610	7.0
Brownsville	8,510	7,540	970	11.4	8,160	7,440	730	8.9	8,180	7,480	700	8.6
Columbia	37,570	34,480	3,100	8.2	36,420	33,970	2,450	6.7	36,560	34,170	2,390	6.5
Cookeville	49,970	46,090	3,890	7.8	50,560	47,390	3,170	6.3	50,100	47,010	3,090	6.2
Crossville	23,880	21,770	2,110	8.9	22,960	21,240	1,720	7.5	22,990	21,280	1,720	7.5
Dyersburg	16,720	14,950	1,770	10.6	16,100	14,820	1,280	7.9	16,210	14,960	1,250	7.7
Greeneville	29,090	26,100	3,000	10.3	28,230	25,720	2,500	8.9	28,450	26,170	2,280	8.0
Harriman	26,310	24,250	2,060	7.8	25,720	24,070	1,650	6.4	25,800	24,230	1,580	6.1
Humboldt	19,880	17,420	2,460	12.4	18,920	17,060	1,860	9.8	19,000	17,220	1,780	9.4
LaFollette	16,510	14,740	1,760	10.7	15,990	14,670	1,320	8.2	16,140	14,850	1,290	8.0
Lawrenceburg	15,950	14,070	1,880	11.8	15,180	13,790	1,380	9.1	15,290	13,940	1,350	8.8
Lewisburg	12,320	11,140	1,190	9.6	12,040	11,140	900	7.5	12,120	11,250	870	7.2
Martin	15,430	13,760	1,670	10.8	14,340	13,010	1,330	9.3	14,370	13,150	1,230	8.5
McMinnville	17,380	15,870	1,520	8.7	16,570	15,440	1,120	6.8	16,750	15,590	1,160	6.9
Newport	15,670	14,090	1,580	10.1	14,800	13,580	1,230	8.3	14,880	13,680	1,200	8.0
Paris	13,580	12,190	1,400	10.3	13,150	12,060	1,090	8.3	13,190	12,140	1,050	7.9
Sevierville	49,540	45,870	3,670	7.4	47,630	44,720	2,910	6.1	47,780	44,980	2,800	5.9
Shelbyville	22,290	20,530	1,770	7.9	22,040	20,650	1,380	6.3	22,180	20,880	1,310	5.9
Tullahoma	49,630	46,080	3,560	7.2	48,490	45,680	2,810	5.8	49,080	46,400	2,680	5.5
Union City	15,610	13,820	1,790	11.5	14,990	13,610	1,380	9.2	15,050	13,690	1,350	9.0
Cities												
Bartlett	28,270	26,190	2,080	7.4	27,690	25,960	1,730	6.3	27,850	26,230	1,620	5.8
Brentwood	18,850	17,790	1,060	5.6	18,850	17,980	870	4.6	19,020	18,180	840	4.4
Bristol	12,700	11,720	980	7.7	12,350	11,540	810	6.5	12,360	11,650	720	5.8
Chattanooga	76,660	70,010	6,650	8.7	75,130	69,540	5,580	7.4	75,450	70,190	5,260	7.0
Clarksville	57,720	52,650	5,080	8.8	55,980	52,150	3,830	6.8	56,520	52,440	4,080	7.2
Cleveland	20,230	18,680	1,550	7.6	19,800	18,530	1,280	6.5	19,980	18,710	1,280	6.4
Collierville	21,970	20,540	1,420	6.5	21,620	20,360	1,250	5.8	21,780	20,580	1,210	5.5
Columbia	15,440	14,050	1,380	9.0	14,940	13,850	1,090	7.3	15,020	13,930	1,090	7.3
Cookeville	15,090	14,000	1,090	7.2	15,320	14,400	920	6.0	15,170	14,280	880	5.8
Franklin	35,430	33,430	2,010	5.7	35,520	33,790	1,730	4.9	35,800	34,170	1,630	4.5
Gallatin	14,350	13,300	1,050	7.3	14,280	13,450	830	5.8	14,390	13,600	790	5.5
Germantown	19,020	17,830	1,200	6.3	18,670	17,670	1,000	5.3	18,800	17,860	950	5.0
Hendersonville	28,450	26,670	1,780	6.3	28,410	26,960	1,440	5.1	28,630	27,270	1,360	4.8
Jackson	31,370	28,590	2,780	8.9	30,580	28,390	2,190	7.2	30,690	28,540	2,150	7.0
Johnson City	31,330	29,030	2,300	7.3	30,430	28,500	1,930	6.3	30,730	28,880	1,850	6.0
Kingsport	21,320	19,610	1,700	8.0	20,710	19,320	1,400	6.7	20,860	19,500	1,360	6.5
Knoxville	88,870	82,050	6,820	7.7	88,430	82,930	5,500	6.2	88,950	83,690	5,270	5.9
LaVergne	18,980	17,850	1,130	5.9	18,970	18,050	930	4.9	19,170	18,250	930	4.8
Lebanon	13,570	12,640	940	6.9	13,500	12,780	720	5.3	13,670	12,920	750	5.5
Maryville	12,900	11,930	970	7.5	12,850	12,050	790	6.2	12,920	12,160	760	5.9
Memphis	282,200	251,370	30,830	10.9	274,650	249,180	25,480	9.3	275,900	251,790	24,110	8.7
Morristown	12,510	11,400	1,110	8.8	12,190	11,240	950	7.8	12,390	11,460	930	7.5
Murfreesboro	60,310	56,240	4,070	6.7	60,040	56,850	3,190	5.3	60,540	57,490	3,050	5.0
Nashville	334,920	313,150	21,770	6.5	334,910	316,550	18,350	5.5	337,510	320,130	17,380	5.2
Oak Ridge	13,650	12,700	950	6.9	13,610	12,810	810	5.9	13,740	12,920	820	6.0
Smyrna	22,660	21,200	1,460	6.5	22,610	21,430	1,190	5.2	22,770	21,670	1,110	4.9
Spring Hill	16,140	15,210	930	5.8	16,030	15,290	750	4.6	16,200	15,440	760	4.7

Total nonfarm employment increased by 1,000 jobs from September 2014 to October 2014. There were seasonal increases in retail trade (up 400 jobs); professional/business services and educational/health services (both up 300 jobs); and durable goods manufacturing and local government (both up 200 jobs). This was partially offset by declines of 400 jobs in leisure/hospitality and 300 jobs in financial activities.

During the past 12 months, nonfarm employment increased by 3,000 jobs. During the year, goods-producing jobs increased by 700 while service-providing industries jobs increased by 2,300.

**CHATTANOOGA MSA
UNEMPLOYMENT RATES
(NOT SEASONALLY ADJUSTED)**



ESTIMATED NONFARM EMPLOYMENT (in thousands)

Industry	October	Revised	Preliminary	Net Change	
	2013	September 2014	October 2014	Oct. 2013 Oct. 2014	Sept. 2014 Oct. 2014
Total Nonfarm	240.9	242.9	243.9	3.0	1.0
Total Private	203.8	206.5	207.2	3.4	0.7
Goods Producing	39.5	39.9	40.2	0.7	0.3
Mining, Logging, & Construction	9.2	9.5	9.6	0.4	0.1
Manufacturing	30.3	30.4	30.6	0.3	0.2
Durable Goods Manufacturing	15.8	16.4	16.6	0.8	0.2
Nondurable Goods Manufacturing	14.5	14.0	14.0	-0.5	0.0
Service Providing	201.4	203.0	203.7	2.3	0.7
Trade, Transportation, & Utilities	52.0	52.1	52.7	0.7	0.6
Wholesale Trade	8.8	9.0	9.1	0.3	0.1
Retail Trade	25.6	25.0	25.4	-0.2	0.4
Transportation, Warehousing, & Utilities	17.6	18.1	18.2	0.6	0.1
Information	2.8	2.8	2.8	0.0	0.0
Financial Activities	13.8	13.9	13.6	-0.2	-0.3
Professional & Business Services	27.5	27.4	27.7	0.2	0.3
Educational & Health Services	32.8	32.4	32.7	-0.1	0.3
Leisure & Hospitality	25.6	28.1	27.7	2.1	-0.4
Other Services	9.8	9.9	9.8	0.0	-0.1
Government	37.1	36.4	36.7	-0.4	0.3
Federal Government	6.2	6.2	6.2	0.0	0.0
State Government	7.2	7.1	7.2	0.0	0.1
Local Government	23.7	23.1	23.3	-0.4	0.2

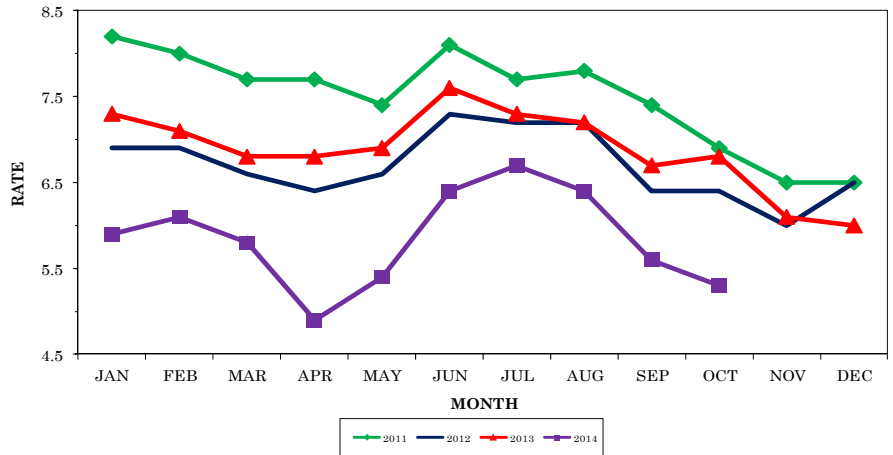


Knoxville MSA -Anderson, Blount, Knox, Loudon, Union

Total nonfarm employment increased by 1,300 jobs from September 2014 to October 2014. All the employment increase was in the service-providing industries. There were increases in local government (up 900 jobs), professional/business services (up 700 jobs), and educational/health services (up 400 jobs). This was partially offset by a seasonal decline in leisure/hospitality (down 700 jobs).

Over the past 12 months, nonfarm employment increased by 10,700 jobs. During that time, goods-producing jobs increased by 3,000 jobs, while service-providing jobs increased by 7,700.

**KNOXVILLE MSA
UNEMPLOYMENT RATES
(NOT SEASONALLY ADJUSTED)**



ESTIMATED NONFARM EMPLOYMENT (in thousands)

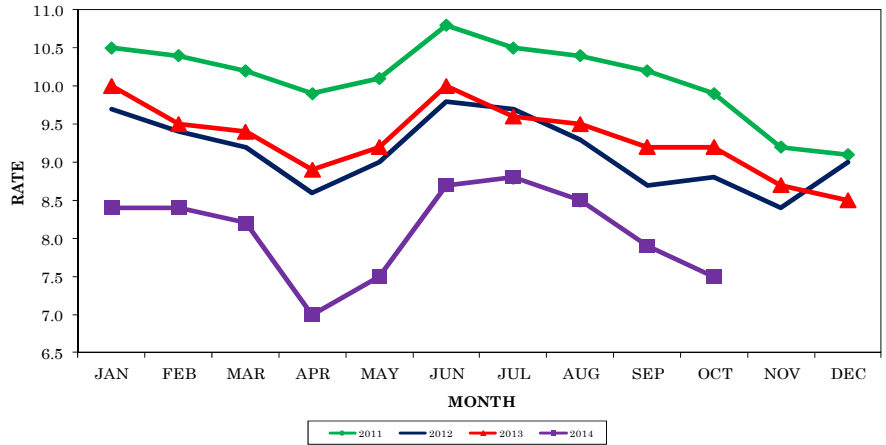
Industry	October 2013	Revised	Preliminary	Net Change	
		September 2014	October 2014	Oct. 2013 Oct. 2014	Sept. 2014 Oct. 2014
Total Nonfarm	335.3	344.7	346.0	10.7	1.3
Total Private	285.5	295.2	295.6	10.1	0.4
Goods Producing	46.3	49.3	49.3	3.0	0.0
Mining, Logging, & Construction	15.3	16.8	16.7	1.4	-0.1
Manufacturing	31.0	32.5	32.6	1.6	0.1
Durable Goods Manufacturing	22.7	24.0	24.1	1.4	0.1
Nondurable Goods Manufacturing	8.3	8.5	8.5	0.2	0.0
Service Providing	289.0	295.4	296.7	7.7	1.3
Trade, Transportation, & Utilities	69.8	70.8	70.9	1.1	0.1
Wholesale Trade	16.1	15.8	15.8	-0.3	0.0
Retail Trade	41.4	42.5	42.5	1.1	0.0
Transportation, Warehousing, & Utilities	12.3	12.5	12.6	0.3	0.1
Information	5.6	5.5	5.5	-0.1	0.0
Financial Activities	17.3	17.6	17.6	0.3	0.0
Professional & Business Services	50.0	53.1	53.8	3.8	0.7
Educational & Health Services	46.2	46.2	46.6	0.4	0.4
Leisure & Hospitality	37.0	39.2	38.5	1.5	-0.7
Other Services	13.3	13.5	13.4	0.1	-0.1
Government	49.8	49.5	50.4	0.6	0.9
Federal Government	4.8	4.8	4.9	0.1	0.1
State Government	15.7	15.7	15.6	-0.1	-0.1
Local Government	29.3	29.0	29.9	0.6	0.9

Total nonfarm employment increased by 3,000 jobs from September 2014 to October 2014. There were increases in professional/business services (up 2,100 jobs), which includes increases of 1,400 jobs in administrative/support/waste management and 700 jobs in professional/scientific/technical services; educational/health services (up 500 jobs); transportation/warehousing/utilities and local government (both up 400 jobs); federal government (up 300 jobs); and other services (up 200 jobs).

This was partially offset by a seasonal decrease in leisure/hospitality (down 800 jobs).

During the past 12 months, nonfarm employment increased by 7,200 jobs. During that time, goods-producing jobs increased by 1,800, while service-providing jobs increased by 5,400.

**MEMPHIS MSA
UNEMPLOYMENT RATES
(NOT SEASONALLY ADJUSTED)**



ESTIMATED NONFARM EMPLOYMENT (in thousands)

Industry	October	Revised	Preliminary	Net Change	
	2013	September 2014	October 2014	Oct. 2013 Oct. 2014	Sept. 2014 Oct. 2014
Total Nonfarm	606.9	611.1	614.1	7.2	3.0
Total Private	522.4	528.9	531.2	8.8	2.3
Goods Producing	65.2	67.1	67.0	1.8	-0.1
Mining, Logging, & Construction	21.0	21.6	21.6	0.6	0.0
Manufacturing	44.2	45.5	45.4	1.2	-0.1
Durable Goods Manufacturing	23.1	24.5	24.5	1.4	0.0
Nondurable Goods Manufacturing	21.1	21.0	20.9	-0.2	-0.1
Service Providing	541.7	544.0	547.1	5.4	3.1
Trade, Transportation, & Utilities	162.7	163.5	163.8	1.1	0.3
Wholesale Trade	34.5	34.1	34.0	-0.5	-0.1
Retail Trade	65.1	64.8	64.8	-0.3	0.0
Transportation, Warehousing, & Utilities	63.1	64.6	65.0	1.9	0.4
Information	6.0	5.8	5.8	-0.2	0.0
Financial Activities	27.5	29.6	29.7	2.2	0.1
Professional & Business Services	87.4	86.5	88.6	1.2	2.1
Professional, Scientific, & Technical Services	19.5	19.3	20.0	0.5	0.7
Management of Companies & Enterprises	6.7	6.9	6.9	0.2	0.0
Administrative, Support, & Waste Management	61.2	60.3	61.7	0.5	1.4
Educational & Health Services	87.3	86.1	86.6	-0.7	0.5
Leisure & Hospitality	62.3	65.8	65.0	2.7	-0.8
Other Services	24.0	24.5	24.7	0.7	0.2
Government	84.5	82.2	82.9	-1.6	0.7
Federal Government	13.9	13.5	13.8	-0.1	0.3
State Government	14.4	14.1	14.1	-0.3	0.0
Local Government	56.2	54.6	55.0	-1.2	0.4



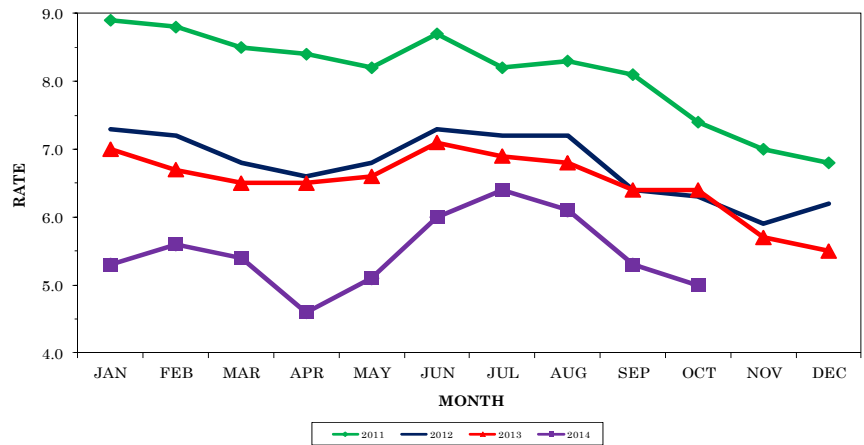
Nashville MSA — Cannon, Cheatham, Davidson, Dickson, Hickman, Macon, Robertson, Rutherford, Smith, Sumner, Trousdale, Williamson, Wilson

Total nonfarm employment increased by 4,200 jobs from September 2014 to October 2014. There were seasonal increases in trade/transportation/utilities (up 2,200 jobs), which includes increases of 1,300 jobs in retail trade, 600 jobs in wholesale trade, and 300 jobs in transportation/warehousing/utilities; educational/health services (up 1,600 jobs), which includes increases of 1,200 jobs in health care/social assistance and 400 jobs in educational services; local government (up 700 jobs); financial activities (up 600 jobs); mining/logging/construction, professional/scientific/technical services, and state government (each up 400 jobs); and information (up 200 jobs).

These were partially offset by declines in leisure/hospitality (down 1,600 jobs) and administrative/support/waste management (down 600 jobs).

During the past 12 months, nonfarm employment increased by 26,000 jobs. During that time, goods-producing jobs increased by 5,800, while service-providing jobs increased by 20,200.

NASHVILLE MSA UNEMPLOYMENT RATES (NOT SEASONALLY ADJUSTED)



ESTIMATED NONFARM EMPLOYMENT (in thousands)

Industry	October	Revised	Preliminary	Net Change	
	2013	September 2014	October 2014	Oct. 2013 Oct. 2014	Sept. 2014 Oct. 2014
Total Nonfarm	821.7	843.5	847.7	26.0	4.2
Total Private	715.9	738.5	741.6	25.7	3.1
Goods Producing	105.6	111.1	111.4	5.8	0.3
Mining, Logging, & Construction	33.6	37.0	37.4	3.8	0.4
Manufacturing	72.0	74.1	74.0	2.0	-0.1
Durable Goods Manufacturing	50.1	52.1	52.0	1.9	-0.1
Nondurable Goods Manufacturing	21.9	22.0	22.0	0.1	0.0
Service Providing	716.1	732.4	736.3	20.2	3.9
Trade, Transportation, & Utilities	160.6	164.3	166.5	5.9	2.2
Wholesale Trade	40.2	41.8	42.4	2.2	0.6
Retail Trade	85.4	87.2	88.5	3.1	1.3
Transportation, Warehousing, & Utilities	35.0	35.3	35.6	0.6	0.3
Information	20.2	20.0	20.2	0.0	0.2
Financial Activities	51.1	51.6	52.2	1.1	0.6
Professional & Business Services	127.4	136.3	136.1	8.7	-0.2
Professional, Scientific, & Technical Services	46.7	50.9	51.3	4.6	0.4
Management of Companies & Enterprises	14.8	15.9	15.9	1.1	0.0
Administrative, Support, & Waste Management	65.9	69.5	68.9	3.0	-0.6
Educational & Health Services	129.1	130.1	131.7	2.6	1.6
Educational Services	23.5	23.5	23.9	0.4	0.4
Health Care & Social Assistance	105.6	106.6	107.8	2.2	1.2
Leisure & Hospitality	89.4	92.0	90.4	1.0	-1.6
Other Services	32.5	33.1	33.1	0.6	0.0
Government	105.8	105.0	106.1	0.3	1.1
Federal Government	12.2	12.0	12.0	-0.2	0.0
State Government	28.7	28.4	28.8	0.1	0.4
Local Government	64.9	64.6	65.3	0.4	0.7

Nonfarm Employment (Smaller MSAs)

	Clarksville, TN-KY MSA		Cleveland, TN MSA		Jackson, TN MSA	
	Sept. 2014 Revised	Oct. 2014 Prelim.	Sept. 2014 Revised	Oct. 2014 Prelim.	Sept. 2014 Revised	Oct. 2014 Prelim.
Total Nonfarm	89,000	88,900	45,400	45,400	62,100	62,500
Total Private	67,900	67,800	39,700	39,700	49,700	50,000
Goods Producing	13,500	13,600	10,400	10,400	11,100	11,000
Mining, Logging, & Construction	3,600	3,700	1,800	1,900	2,700	2,600
Manufacturing	9,900	9,900	8,600	8,500	8,400	8,400
Service Providing	75,500	75,300	35,000	35,000	51,000	51,500
Trade, Transportation, & Utilities	16,500	16,200	8,700	8,700	12,300	12,500
Wholesale Trade	N.A.	N.A.	800	800	3,100	3,100
Retail Trade	11,700	11,300	5,200	5,200	7,400	7,600
Transportation, Warehousing, & Utilities	2,300	2,300	2,700	2,700	1,800	1,800
Information	1,000	1,000	300	300	500	500
Financial Activities	3,000	3,000	1,300	1,300	1,800	1,800
Professional & Business Services	8,600	8,700	5,500	5,700	6,100	6,200
Educational & Health Services	11,500	11,500	6,200	6,200	9,600	9,600
Leisure & Hospitality	10,900	11,000	4,900	4,600	6,100	6,100
Other Services	2,900	2,800	2,400	2,500	2,200	2,300
Government	21,100	21,100	5,700	5,700	12,400	12,500
Federal Government	6,200	6,200	300	300	400	400
State Government	4,600	4,600	800	800	1,800	1,800
Local Government	10,300	10,300	4,600	4,600	10,200	10,300

	Johnson City, TN MSA		Kingsport-Bristol, TN-VA MSA		Morristown, TN MSA	
	Sept. 2014 Revised	Oct. 2014 Prelim.	Sept. 2014 Revised	Oct. 2014 Prelim.	Sept. 2014 Revised	Oct. 2014 Prelim.
Total Nonfarm	78,100	78,700	120,400	120,400	46,300	47,200
Total Private	62,100	62,100	104,000	103,800	38,800	39,300
Goods Producing	9,900	10,100	29,000	28,900	12,700	12,800
Mining, Logging, & Construction	2,700	2,800	7,700	7,600	2,200	2,200
Manufacturing	7,200	7,300	21,300	21,300	10,500	10,600
Service Providing	68,200	68,600	91,400	91,500	33,600	34,400
Trade, Transportation, & Utilities	13,100	13,200	24,300	24,400	10,100	10,300
Wholesale Trade	2,200	2,200	5,000	5,100	2,000	2,100
Retail Trade	9,900	10,000	14,600	14,600	5,700	5,800
Transportation, Warehousing, & Utilities	1,000	1,000	4,700	4,700	2,400	2,400
Information	1,300	1,200	2,000	2,000	300	300
Financial Activities	3,700	3,700	3,800	3,800	1,200	1,200
Professional & Business Services	8,600	8,600	9,700	9,600	4,000	3,900
Educational & Health Services	13,600	13,500	18,500	18,700	5,100	5,500
Leisure & Hospitality	9,400	9,300	12,000	11,900	4,100	4,100
Other Services	2,500	2,500	4,700	4,500	1,300	1,200
Government	16,000	16,600	16,400	16,600	7,500	7,900
Federal Government	2,700	2,700	900	900	400	300
State Government	5,400	5,800	2,500	2,500	1,400	1,700
Local Government	7,900	8,100	13,000	13,200	5,700	5,900

Clarksville MSA is Montgomery County, Stewart County, Christian County, KY, & Trigg County, KY. **Cleveland MSA** is Bradley & Polk counties. **Jackson MSA** is Chester & Madison counties. **Johnson City MSA** is Carter, Unicoi, & Washington counties. **Kingsport-Bristol MSA** is Hawkins County, Sullivan County, Scott County, VA, Washington County, VA, & Bristol City, VA. **Morristown MSA** is Grainger, Hamblen, & Jefferson counties.

U.S. Consumer Price Index — October 2014

Group	All Urban Consumers			Wage & Clerical Earners		
	Index	Percent Change		Index	Percent Change	
		Yearly	Monthly		Yearly	Monthly
U.S. City Average						
All Items (1982-84=100)	237.433	1.7	-0.3	233.229	1.5	-0.4
Food and beverages	244.775	2.9	0.2	244.365	3.0	0.2
Housing	234.434	2.7	-0.1	231.006	2.7	-0.2
Apparel	131.961	0.7	1.3	131.157	0.8	1.4
Transportation	212.626	-1.1	-1.7	212.781	-1.3	-2.1
Medical care	437.027	2.1	0.1	439.900	2.0	0.1
South						
All Items (1982-84=100)	231.131	1.6	-0.3	228.724	1.5	-0.4
Food and beverages	243.349	2.5	0.2	242.845	2.7	0.2
Housing	218.180	2.8	-0.3	218.308	3.0	-0.4
Apparel	141.107	0.7	2.6	140.444	0.4	2.8
Transportation	212.800	-1.2	-1.7	212.162	-1.3	-2.0
Medical care	415.601	1.6	0.1	421.667	1.5	0.1

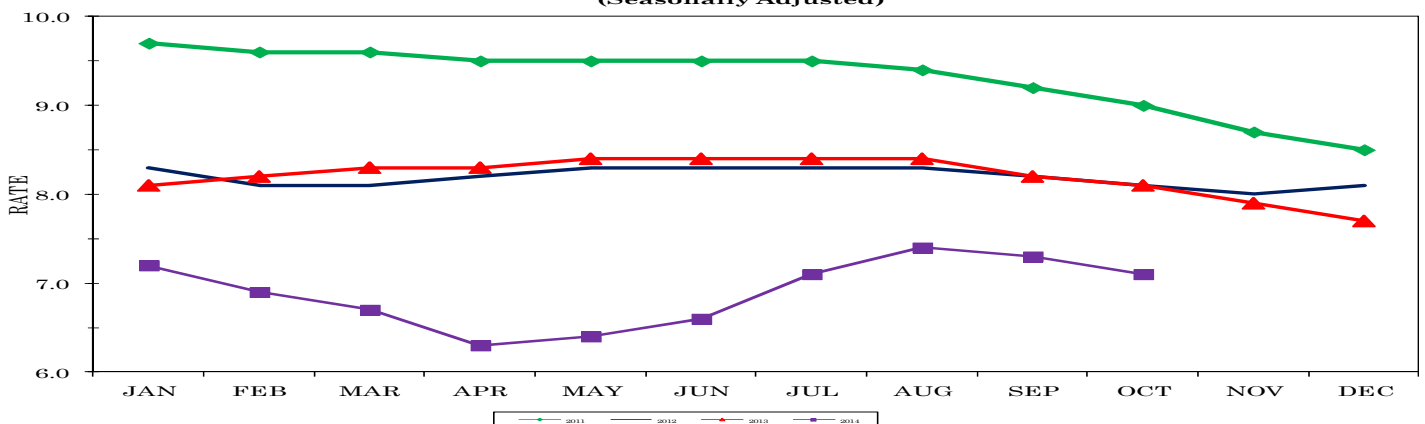
HOURS AND EARNINGS OF PRODUCTION WORKERS

	AVERAGE WEEKLY EARNINGS			AVG. HOURLY EARNINGS			AVERAGE WEEKLY HOURS		
	Oct.	Sept.	Oct.	Oct.	Sept.	Oct.	Oct.	Sept.	Oct.
	2013	2014	2014	2013	2014	2014	2013	2014	2014
Manufacturing	\$714.11	\$734.93	\$706.03	\$17.46	\$17.54	\$17.39	40.9	41.9	40.6
Durable Goods Manufacturing	\$747.60	\$750.54	\$728.02	\$17.80	\$17.87	\$17.80	42.0	42.0	40.9
Non-Durable Goods Manufacturing	\$657.15	\$708.09	\$668.93	\$16.85	\$16.94	\$16.64	39.0	41.8	40.2

ALL EMPLOYEE HOURS AND EARNINGS

	AVERAGE WEEKLY EARNINGS			AVG. HOURLY EARNINGS			AVERAGE WEEKLY HOURS		
	Oct.	Sept.	Oct.	Oct.	Sept.	Oct.	Oct.	Sept.	Oct.
	2013	2014	2014	2013	2014	2014	2013	2014	2014
Total Private	\$715.53	\$726.57	\$719.66	\$20.27	\$20.70	\$20.68	35.3	35.1	34.8
Goods Producing	\$866.47	\$869.37	\$848.22	\$20.98	\$21.05	\$21.10	41.3	41.3	40.2
Mining, Logging and Construction	\$899.95	\$883.73	\$848.68	\$21.53	\$21.66	\$21.65	41.8	40.8	39.2
Manufacturing	\$856.55	\$864.45	\$846.86	\$20.79	\$20.83	\$20.91	41.2	41.5	40.5
Private Service Providing	\$682.38	\$694.22	\$691.15	\$20.07	\$20.60	\$20.57	34.0	33.7	33.6
Trade, Transportation, and Utilities	\$655.67	\$652.22	\$653.26	\$18.68	\$18.96	\$18.99	35.1	34.4	34.4
Information	\$929.27	\$962.68	\$936.93	\$25.39	\$25.74	\$25.46	36.6	37.4	36.8
Financial Activities	\$865.50	\$941.18	\$936.66	\$23.08	\$24.51	\$24.52	37.5	38.4	38.2
Professional and Business Services	\$895.80	\$921.06	\$896.97	\$24.61	\$25.80	\$25.41	36.4	35.7	35.3
Education and Health Services	\$716.04	\$736.85	\$736.33	\$21.06	\$21.42	\$21.53	34.0	34.4	34.2
Leisure and Hospitality	\$311.42	\$312.93	\$315.36	\$11.62	\$11.59	\$11.68	26.8	27.0	27.0
Other Services	\$648.39	\$645.08	\$645.35	\$19.24	\$19.91	\$19.98	33.7	32.4	32.3

TENNESSEE UNEMPLOYMENT RATES (Seasonally Adjusted)





The Tennessee Department of Labor and Workforce Development is committed to principles of equal opportunity, equal access, and affirmative action. Auxiliary aids and services are available upon request to individuals with disabilities.
Tennessee Department of Labor and Workforce Development; Authorization 337607; This public document was promulgated for electronic use only.