

Tennessee Felon Population Update

September 2007

Prepared By:

**Tennessee Department of Correction
Policy, Planning, and Research Section**

TENNESSEE FELON POPULATION UPDATE
TABLE OF CONTENTS
September 2007

Felon Population by Primary Offense Fiscal Year 2002/2003 to Present	1
Felon Population Projections vs. Actual Graph July 2004 to Present	2
Felon Inmate Population Projections vs. Actual Fiscal Year 2006/2007 to Present	3
Incarcerated Felon Population Fiscal Year 2002/2003 to Present	4
Incarcerated Felon Populations Fiscal Year 1995/1996 - 2006/2007	5
Local Jail Populations by Category Fiscal Years 2006/2007 to Present	6
Felon Admissions in Tennessee Fiscal Year 2007/2008	7
Felon Admissions in Tennessee Fiscal Year 2006/2007	8
Felon Admissions in Tennessee Fiscal Years 1996/1997 - 2006/2007	9
Felon Releases in Tennessee Fiscal Year 2007/2008	10
Felon Releases in Tennessee Fiscal Year 2006/2007	11
Felon Releases in Tennessee Fiscal Years 1996/1997 - 2006/2007	12
Projected Felon Admissions vs. Actual Fiscal Year 2006/2007 - 2007/2008	13
Projected Felon Releases Vs. Actual Fiscal Year 2006/2007 - 2007/2008	14
Community Services Population Fiscal Years 2001/2002 to Present	15
Community Services Projections Vs. Actual July 2006 to Present	16
Community Services Population Fiscal Years 1995/1996 - 2006/2007	17
Parole Grant Rates in Tennessee Fiscal Years 2002/2003 to Present	18
Parole Population Fiscal Years 2002/2003 to Present	19
Parole Population Projections vs. Actual Graph Fiscal Year 2005/2006 to Present	20

**TDOC POPULATION BY PRIMARY OFFENSE
AS OF August 31, 2007****

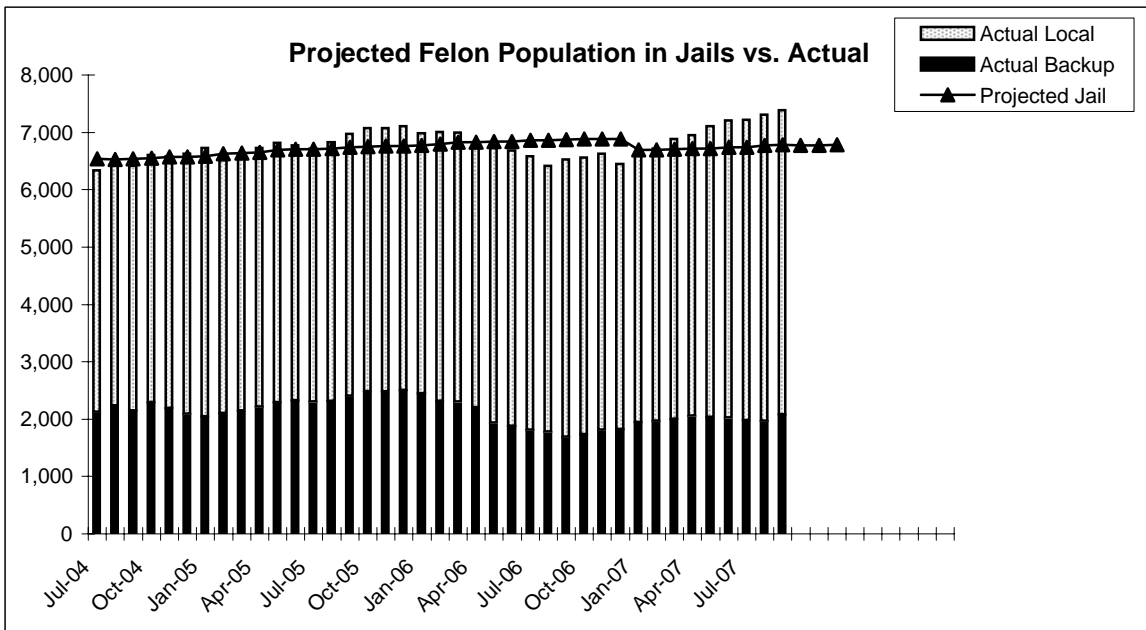
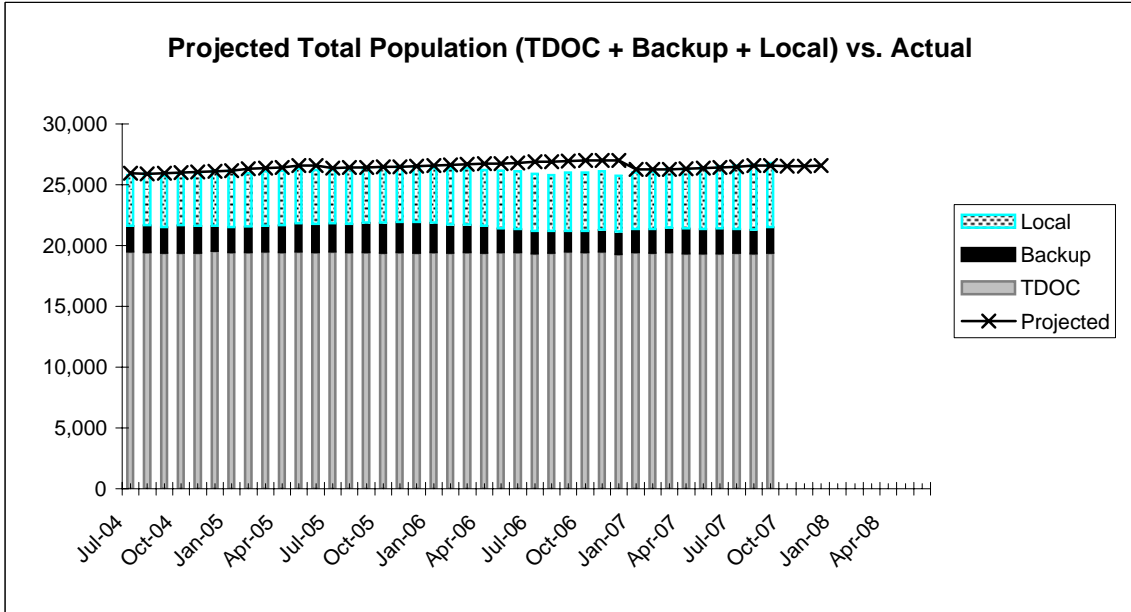
	TOTAL POP.	Monthly Change	Homicide	% OF TOTAL	Monthly Change	Kidnap	% OF TOTAL	Monthly Change	Sex Ofnder	% OF TOTAL	Monthly Change	Robbery	% OF TOTAL	Monthly Change	**Property	% OF TOTAL	Monthly Change	Assault	% OF TOTAL	Monthly Change	Drugs	% OF TOTAL	Monthly Change	Other	% OF TOTAL	Monthly Change
Averages																										
FY 02/03	18,297	0.7%	3,474	18.9%		253	1.4%		2,739	14.9%		3,221	17.5%		2,999	16.3%		2,073	11.2%		2,320	12.6%		1,218	6.6%	
FY 03/04	19,213	0.4%	3,503	18.1%		247	1.3%		2,786	14.4%		3,348	17.3%		3,240	16.7%		2,170	11.2%		2,595	13.4%		1,324	6.8%	
FY 04/05	19,263	0.0%	3,543	18.4%		249	1.3%		2,797	14.5%		3,320	17.2%		3,144	16.3%		2,195	11.4%		2,682	13.9%		1,332	6.9%	
FY 05/06	19,248	0.0%	3,574	18.6%		242	1.3%		2,802	14.6%		3,164	16.4%		3,127	16.2%		2,187	11.4%		2,805	14.6%		1,347	7.0%	
2006/2007																										
JUL	19,195		3,573	18.6%		232	1.2%		2,815	14.7%		3,027	15.8%		3,150	16.4%		2,144	11.2%		2,889	15.1%		1,365	7.1%	
AUG	19,202	0.0%	3,572	18.6%	0.0%	231	1.2%	-0.4%	2,828	14.7%	0.5%	3,013	15.7%	-0.5%	3,149	16.4%	0.0%	2,168	11.3%	1.1%	2,868	14.9%	-0.7%	1,373	7.2%	0.6%
SEP	19,326	0.6%	3,584	18.5%	0.3%	226	1.2%	-2.2%	2,830	14.6%	0.1%	2,999	15.5%	-0.5%	3,187	16.5%	1.2%	2,184	11.3%	0.7%	2,909	15.1%	1.4%	1,407	7.3%	2.5%
OCT	19,267	-0.3%	3,574	18.5%	-0.3%	226	1.2%	0.0%	2,819	14.6%	-0.4%	2,978	15.5%	-0.7%	3,191	16.6%	0.1%	2,176	11.3%	-0.4%	2,921	15.2%	0.4%	1,382	7.2%	-1.8%
NOV	19,286	0.1%	3,582	18.6%	0.2%	224	1.2%	-0.9%	2,823	14.6%	0.1%	2,961	15.4%	-0.6%	3,187	16.5%	-0.1%	2,177	11.3%	0.0%	2,933	15.2%	0.4%	1,399	7.3%	1.2%
DEC	19,178	-0.6%	3,580	18.7%	-0.1%	225	1.2%	0.4%	2,820	14.7%	-0.1%	2,940	15.3%	-0.7%	3,125	16.3%	-1.9%	2,179	11.4%	0.1%	2,916	15.2%	-0.6%	1,393	7.3%	-0.4%
JAN	19,244	0.3%	3,593	18.7%	0.4%	224	1.2%	-0.4%	2,818	14.6%	-0.1%	2,945	15.3%	0.2%	3,138	16.3%	0.4%	2,163	11.2%	-0.7%	2,969	15.4%	1.8%	1,394	7.2%	0.1%
FEB	19,196	-0.2%	3,596	18.7%	0.1%	222	1.2%	-0.9%	2,811	14.6%	-0.2%	2,945	15.3%	0.0%	3,101	16.2%	-1.2%	2,175	11.3%	0.6%	2,953	15.4%	-0.5%	1,393	7.3%	-0.1%
MAR	19,244	0.3%	3,606	18.7%	0.3%	225	1.2%	1.4%	2,819	14.6%	0.3%	2,937	15.3%	-0.3%	3,134	16.3%	1.1%	2,165	11.3%	-0.5%	2,972	15.4%	0.6%	1,386	7.2%	-0.5%
APR	19,132	-0.6%	3,616	18.9%	0.3%	230	1.2%	2.2%	2,796	14.6%	-0.8%	2,898	15.1%	-1.3%	3,110	16.3%	-0.8%	2,140	11.2%	-1.2%	2,940	15.4%	-1.1%	1,402	7.3%	1.2%
MAY	19,141	0.0%	3,621	18.9%	0.1%	230	1.2%	0.0%	2,798	14.6%	0.1%	2,905	15.2%	0.2%	3,095	16.2%	-0.5%	2,150	11.2%	0.5%	2,949	15.4%	0.3%	1,393	7.3%	-0.6%
JUN	19,180	0.2%	3,617	18.9%	-0.1%	234	1.2%	1.7%	2,803	14.6%	0.2%	2,917	15.2%	0.4%	3,117	16.3%	0.7%	2,146	11.2%	-0.2%	2,945	15.4%	-0.1%	1,401	7.3%	0.6%
FY AVG	19,216	0.0%	3,593	18.7%	0.1%	227	1.2%	0.1%	2,815	14.6%	0.0%	2,955	15.4%	-0.3%	3,140	16.3%	-0.1%	2,164	11.3%	0.0%	2,930	15.2%	0.2%	1,391	7.2%	0.2%
2007/2008																										
JUL	19,172	0.0%	3,612	18.8%	-0.1%	245	1.3%	4.7%	2,809	14.7%	0.2%	2,868	15.0%	-1.7%	3,143	16.4%	0.8%	2,141	11.2%	-0.2%	2,940	15.3%	-0.2%	1,414	7.4%	0.9%
AUG*	19,174	0.0%	3,616	18.9%	0.1%	245	1.3%	0.0%	2,808	14.6%	0.0%	2,867	15.0%	0.0%	3,143	16.4%	0.0%	2,136	11.1%	-0.2%	2,942	15.3%	0.1%	1,417	7.4%	0.2%
SEP																										
OCT																										
NOV																										
DEC																										
JAN																										
FEB																										
MAR																										
APR																										
MAY																										
JUN																										
FY AVG																										

*These numbers were previously incorrect due to an error in formulas.

**All Primary Offense information is reported one month in arrears.

***Excludes Robbery (Prior to September 2000, these offenses only included Theft, Stolen Property and Burglary - now includes All Property except Robbery).

**PROJECTED POPULATION VS. ACTUAL
JULY 2004
TO PRESENT**



Projections Updated January 2007

**INCARCERATED FELON POPULATION
PROJECTIONS VS. ACTUAL
AS OF September 30, 2007**

2006/2007	PROJECTED	ACTUAL	DIFF	% DIFF
JULY	26,900	25,918	982	3.8%
AUGUST	26,901	25,792	1,109	4.3%
SEPTEMBER	26,946	26,015	931	3.6%
OCTOBER	26,979	25,993	986	3.8%
NOVEMBER	26,984	26,084	900	3.5%
DECEMBER	26,998	25,733	1,265	4.9%
JANUARY	26,246	26,006	240	0.9%
FEBRUARY	26,265	26,064	201	0.8%
MARCH	26,284	26,334	-50	-0.2%*
APRIL	26,319	26,297	22	0.1%
MAY	26,349	26,413	-64	-0.2%
JUNE	26,415	26,551	-136	-0.5%
FY AVERAGE	26,632	26,100	532	2.1%

2007/2008	PROJECTED	ACTUAL	DIFF	% DIFF
JULY	26,450	26,573	-123	-0.5%
AUGUST	26,579	26,622	-43	-0.2%
SEPTEMBER	26,595	26,772	-177	-0.7%
OCTOBER	26,548			
NOVEMBER	26,544			
DECEMBER	26,590			
JANUARY	26,626			
FEBRUARY	26,653			
MARCH	26,721			
APRIL	26,765			
MAY	26,814			
JUNE	26,793			
FY AVERAGE	26,640	26,656	-114	-0.4%

*These tables compare the accuracy of the projection model by comparing the projected population to the actual population. Months in which the projected population is less than the actual population will be represented with a negative sign.

NOTE: Projections were updated January 2007.
Averages are column averages.

INCARCERATED FELON POPULATION AS OF September 30, 2007

	Total Felon Population (A+B+C)	Monthly Change	Monthly Percent Change	TDOD Facilities (A)	Percent of Total	TDOD Backup (B)	Percent of Total	Locally Sentenced (C)	Percent of Total	Local Jail Total (B+C)
FY AVG.										
2002/2003	24,913	103	1.0%	18,436	74.0%	2,313	9.3%	4,164	16.7%	6,477
2003/2004	25,635	33	0.1%	19,404	75.7%	2,021	7.9%	4,210	16.4%	6,231
2004/2005	26,035	26	0.1%	19,431	74.6%	2,180	8.4%	4,425	17.0%	6,605

2005-06

JULY	26,187	-22	-0.1%	19,469	74.3%	2,300	8.8%	4,418	16.9%	6,718
AUGUST	26,263	76	0.3%	19,431	74.0%	2,306	8.8%	4,526	17.2%	6,832
SEPTEMBER	26,400	137	0.5%	19,423	73.6%	2,401	9.1%	4,576	17.3%	6,977
OCTOBER	26,429	29	0.1%	19,353	73.2%	2,473	9.4%	4,603	17.4%	7,076
NOVEMBER	26,504	75	0.3%	19,435	73.3%	2,478	9.3%	4,591	17.3%	7,069
DECEMBER	26,495	-9	0.0%	19,383	73.2%	2,498	9.4%	4,614	17.4%	7,112
JANUARY	26,380	-115	-0.4%	19,395	73.5%	2,448	9.3%	4,537	17.2%	6,985
FEBRUARY	26,367	-13	0.0%	19,355	73.4%	2,306	8.7%	4,706	17.8%	7,012
MARCH	26,394	27	0.1%	19,403	73.5%	2,303	8.7%	4,688	17.8%	6,991
APRIL	26,197	-197	-0.7%	19,379	74.0%	2,195	8.4%	4,623	17.6%	6,818
MAY	26,148	-49	-0.2%	19,419	74.3%	1,934	7.4%	4,795	18.3%	6,729
JUNE	26,110	-38	-0.1%	19,429	74.4%	1,874	7.2%	4,807	18.4%	6,681
FY Average	26,323	-8	0.0%	19,406	73.7%	2,293	8.7%	4,624	17.6%	6,917

2006/2007

JULY	25,918	-192	-0.7%	19,331	74.6%	1,809	7.0%	4,778	18.4%	6,587
AUGUST	25,792	-126	-0.5%	19,377	75.1%	1,772	6.9%	4,643	18.0%	6,415
SEPTEMBER	26,015	223	0.9%	19,490	74.9%	1,685	6.5%	4,840	18.6%	6,525
OCTOBER	25,993	-22	-0.1%	19,432	74.8%	1,725	6.6%	4,836	18.6%	6,561
NOVEMBER	26,084	91	0.4%	19,458	74.6%	1,813	7.0%	4,813	18.5%	6,626
DECEMBER	25,733	-351	-1.3%	19,282	74.9%	1,817	7.1%	4,634	18.0%	6,451
JANUARY	26,006	273	1.1%	19,396	74.6%	1,946	7.5%	4,664	17.9%	6,610
FEBRUARY	26,064	58	0.2%	19,344	74.2%	1,963	7.5%	4,757	18.3%	6,720
MARCH	26,334	270	1.0%	19,445	73.8%	1,993	7.6%	4,896	18.6%	6,889
APRIL	26,297	-37	-0.1%	19,342	73.6%	2,048	7.8%	4,907	18.7%	6,955
MAY	26,413	116	0.4%	19,304	73.1%	2,029	7.7%	5,080	19.2%	7,109
JUNE	26,551	138	0.5%	19,341	72.8%	2,023	7.6%	5,187	19.5%	7,210
FY Average	26,100	37	0.0%	19,379	74.3%	1,885	7.2%	4,836	18.5%	6,722

2007/2008

JULY	26,573	22	0.1%	19,354	72.8%	1,974	7.4%	5,245	19.7%	7,219
AUGUST	26,622	49	0.2%	19,319	72.6%	1,967	7.4%	5,336	20.0%	7,303
SEPTEMBER	26,772	150	0.6%	19,391	72.4%	2,073	7.7%	5,308	19.8%	7,381
OCTOBER										
NOVEMBER										
DECEMBER										
JANUARY										
FEBRUARY										
MARCH										
APRIL										
MAY										
JUNE										
FY Average	26,656	74	0.1%	19,355	72.6%	2,005	7.5%	5,296	19.9%	7,301

Population figures on each year summary line are monthly averages. Monthly change and percent change are calculated from the first month of the year to the last month of the year.

INCARCERATED FELON POPULATION TOTALS AT FISCAL YEAR END (JUNE 30) FY 1995/96 - FY 2006/07

	TOTAL FELON POP. (A+B+C)	TOTAL CHANGE	PERCENT CHANGE	TDOC FACILITIES (A)	PERCENT OF TOTAL	TDOC BACKUP (B)	PERCENT OF TOTAL	LOCALLY SENTENCED (C)	PERCENT OF TOTAL	LOCAL JAIL TOTAL (B+C)
1995-96	18,922	622	8.4%	13,612	71.9%	2,029	10.7%	3,281	17.3%	5,310
1996-97	19,606	684	3.6%	14,218	72.5%	1,817	9.3%	3,571	18.2%	5,388
1997-98	21,286	1,680	8.6%	15,640	73.5%	2,103	9.9%	3,543	16.6%	5,646
1998-99	22,287	1,001	4.7%	16,577	74.4%	1,846	8.3%	3,864	17.3%	5,710
1999-00	22,539	252	1.1%	16,824	74.6%	1,957	8.7%	3,758	16.7%	5,715
2000-01	23,062	523	2.3%	17,459	75.7%	1,901	8.2%	3,702	16.1%	5,603
2001-02	24,235	1,173	5.1%	17,715	73.1%	2,505	10.3%	4,015	16.6%	6,520
2006-03	25,469	1,234	5.1%	19,408	76.2%	1,956	7.7%	4,105	16.1%	6,061
2003-04	25,865	396	1.6%	19,408	75.0%	2,110	8.2%	4,347	16.8%	6,457
2004-05	26,209	344	1.3%	19,432	74.1%	2,321	8.9%	4,456	17.0%	6,777
2005-06	26,110	-99	-0.4%	19,429	74.4%	1,874	7.2%	4,807	18.4%	6,681
2006-07	26,551	441	1.7%	19,341	72.8%	2,023	7.6%	5,187	19.5%	7,210

INCARCERATED FELON POPULATIONS AVERAGES FY 1995/96 - FY 2006/07

	AVG. TOTAL FELON POP. (A+B+C)	ANNUAL CHANGE	PERCENT CHANGE	TDOC FACILITIES (A)	PERCENT OF TOTAL	TDOC BACKUP (B)	PERCENT OF TOTAL	LOCALLY SENTENCED (C)	PERCENT OF TOTAL	LOCAL JAIL TOTAL (B+C)
1995-96	18,694	945	8.2%	13,302	71.2%	2,042	10.9%	3,350	17.9%	5,392
1996-97	19,163	469	2.5%	13,815	72.1%	1,904	9.9%	3,444	18.0%	5,348
1997-98	20,401	1,238	6.5%	15,269	74.8%	1,617	7.9%	3,515	17.2%	5,132
1998-99	21,632	1,231	6.0%	15,933	73.7%	1,941	9.0%	3,758	17.4%	5,699
1999-00	22,608	976	4.5%	16,764	74.2%	1,927	8.5%	3,917	17.3%	5,844
2000-01	22,625	17	0.1%	17,140	75.8%	1,742	7.7%	3,743	16.5%	5,485
2001-02	23,891	1,266	5.6%	17,611	73.7%	2,143	9.0%	4,137	17.3%	6,280
2006-03	24,913	1,022	4.3%	18,436	74.0%	2,313	9.3%	4,164	16.7%	6,477
2003-04	25,635	722	2.9%	19,404	75.7%	2,021	7.9%	4,210	16.4%	6,231
2004-05	26,036	401	1.6%	19,431	74.6%	2,180	8.4%	4,425	17.0%	6,605
2005-06	26,323	287	1.1%	19,406	73.7%	2,293	8.7%	4,624	17.6%	6,917
2006-07	26,100	-223	-0.8%	19,379	74.2%	1,885	7.2%	4,836	18.5%	6,722

NOTE: FISCAL YEAR AVERAGES

LOCAL JAIL POPULATIONS AS OF September 30, 2007

(Source: TDOC's Jail Summary Report)

	Total Jail Pop.	Monthly Change	% Change	Total TDOC Inmates	Local Felons	Federal & Others	Other Convicted Felons	Convicted Misdem.	Total Pre-trial Detainees	% TDOC Felons	% Local Felons	% Federal & Others	% Other Conv. Felons	% Conv. Misdem.	% Pre-trial Detainees
2006/2007															
JULY	24,516	114	1.7%	1,809	4,778	502	770	5,418	11,239	7%	19%	2%	3%	22%	46%
AUGUST	24,555	39	0.2%	1,772	4,643	849	798	5,262	11,231	7%	19%	3%	3%	21%	46%
SEPTEMBER	24,777	222	0.9%	1,685	4,840	722	774	5,349	11,407	7%	20%	3%	3%	22%	46%
OCTOBER	24,666	-111	-0.4%	1,725	4,836	799	816	5,065	11,425	7%	20%	3%	3%	21%	46%
NOVEMBER	24,352	-314	-1.3%	1,813	4,813	545	824	4,814	11,543	7%	20%	2%	3%	20%	47%
DECEMBER	23,474	-878	-3.6%	1,817	4,634	513	775	4,610	11,125	8%	20%	2%	3%	20%	47%
JANUARY	24,144	670	2.9%	1,946	4,664	814	818	5,122	10,780	8%	19%	3%	3%	21%	45%
FEBRUARY	23,959	-185	-0.8%	1,963	4,757	812	905	4,970	10,552	8%	20%	3%	4%	21%	44%
MARCH	25,079	1,120	4.7%	1,993	4,896	860	913	5,433	10,984	8%	20%	3%	4%	22%	44%
APRIL	25,038	-41	-0.2%	2,048	4,907	803	954	5,171	11,155	8%	20%	3%	4%	21%	45%
MAY	25,132	94	0.4%	2,029	5,080	867	818	5,208	11,130	8%	20%	3%	3%	21%	44%
JUNE	25,661	529	2.1%	2,023	5,187	851	798	5,580	11,222	8%	20%	3%	3%	22%	44%
2006/2007 AVERAGE	24,613			1,885	4,836	745	830	5,167	11,149	8%	20%	3%	3%	21%	45%

	Total Jail Pop.	Monthly Change	% Change	Total TDOC Inmates	Local Felons	Federal & Others	Other Convicted Felons	Convicted Misdem.	Total Pre-trial Detainees	% TDOC Felons	% Local Felons	% Federal & Others	% Other Conv. Felons	% Conv. Misdem.	% Pre-trial Detainees
2007/2008															
JULY	25,594	-67	-0.3%	1,974	5,245	834	797	5,310	11,434	8%	20%	3%	3%	21%	45%
AUGUST	26,338	744	2.9%	1,967	5,336	897	930	5,635	11,573	7%	20%	3%	4%	21%	44%
SEPTEMBER	26,419	81	0.3%	2,073	5,308	878	872	5,723	11,565	8%	20%	3%	3%	22%	44%
OCTOBER															
NOVEMBER															
DECEMBER															
JANUARY															
FEBRUARY															
MARCH															
APRIL															
MAY															
JUNE															
2007/2008 AVERAGE	26,117			2,005	5,296	870	866	5,556	11,524	8%	20%	3%	3%	21%	44%

FELON ADMISSIONS IN TENNESSEE FISCAL YEAR 2007/2008

TOTAL ADMISSIONS	PERCENT CHANGE	NEW COMMITTS	PERCENT OF TOTAL	VIOLATORS RETURNED	PERCENT OF TOTAL	ESCAPEES & OTHERS	PERCENT OF TOTAL
---------------------	-------------------	-----------------	---------------------	-----------------------	---------------------	----------------------	---------------------

2007/2008

TDOC

JULY	934		518	55.5%	409	43.8%	7	0.7%
AUGUST	877	-6.1%	486	55.4%	383	43.7%	8	0.9%
SEPTEMBER	695	-20.8%	397	57.1%	295	42.4%	3	0.4%
OCTOBER								
NOVEMBER								
DECEMBER								
JANUARY								
FEBRUARY								
MARCH								
APRIL								
MAY								
JUNE								
TOTAL	2,506		1,401	55.9%	1,087	43.4%	18	0.7%

2007/2008

LOCALLY SENTENCED

JULY	280		162	57.9%	117	41.8%	1	0.4%
AUGUST	298	6.4%	197	66.1%	101	33.9%	0	0.0%
SEPTEMBER	287	-3.7%	178	62.0%	107	37.3%	2	0.7%
OCTOBER								
NOVEMBER								
DECEMBER								
JANUARY								
FEBRUARY								
MARCH								
APRIL								
MAY								
JUNE								
TOTAL	865		537	62.1%	325	37.6%	3	0.3%

2007/2008

SYSTEM TOTAL

JULY	1,214		680	56.0%	526	43.3%	8	0.7%
AUGUST	1,175	-3.2%	683	58.1%	484	41.2%	8	0.7%
SEPTEMBER	982	-16.4%	575	58.6%	402	40.9%	5	0.5%
OCTOBER								
NOVEMBER								
DECEMBER								
JANUARY								
FEBRUARY								
MARCH								
APRIL								
MAY								
JUNE								
TOTAL	3,371		1,938	57.5%	1,412	41.9%	21	0.6%

Admission statistics are incomplete because all data are not received by TDOC immediately after sentencing. In some cases information is not received until several months after sentencing; therefore, the numbers for any given month may be different from the previous month's report.

FELON ADMISSIONS IN TENNESSEE FISCAL YEAR 2006/2007

TOTAL ADMISSIONS	PERCENT CHANGE	NEW COMMITTS	PERCENT OF TOTAL	VIOLATORS RETURNED	PERCENT OF TOTAL	ESCAPEES & OTHERS	PERCENT OF TOTAL
---------------------	-------------------	-----------------	---------------------	-----------------------	---------------------	----------------------	---------------------

TDOC

JULY	817		442	54.1%	369	45.2%	6	0.7%
AUGUST	964	18.0%	539	55.9%	418	43.4%	7	0.7%
SEPTEMBER	896	-7.1%	517	57.7%	373	41.6%	6	0.7%
OCTOBER	934	4.2%	519	55.6%	404	43.3%	11	1.2%
NOVEMBER	903	-3.3%	490	54.3%	402	44.5%	11	1.2%
DECEMBER	734	-18.7%	396	54.0%	327	44.6%	11	1.5%
JANUARY	963	31.2%	557	57.8%	396	41.1%	10	1.0%
FEBRUARY	902	-6.3%	481	53.3%	407	45.1%	14	1.6%
MARCH	965	7.0%	552	57.2%	396	41.0%	17	1.8%
APRIL	962	-0.3%	541	56.2%	406	42.2%	15	1.6%
MAY	951	-1.1%	566	59.5%	376	39.5%	9	0.9%
JUNE	821	-13.7%	488	59.4%	324	39.5%	9	1.1%
TOTAL	10,812		6,088	56.3%	4,598	42.5%	126	1.2%

LOCALLY SENTENCED

JULY	255		166	65.1%	86	33.7%	3	1.2%
AUGUST	309	21.2%	187	60.5%	121	39.2%	1	0.3%
SEPTEMBER	303	-1.9%	189	62.4%	113	37.3%	1	0.3%
OCTOBER	336	10.9%	219	65.2%	115	34.2%	2	0.6%
NOVEMBER	334	-0.6%	191	57.2%	142	42.5%	1	0.3%
DECEMBER	245	-26.6%	167	68.2%	78	31.8%	0	0.0%
JANUARY	404	64.9%	269	66.6%	135	33.4%	0	0.0%
FEBRUARY	276	-31.7%	171	62.0%	104	37.7%	1	0.4%
MARCH	312	13.0%	188	60.3%	123	39.4%	1	0.3%
APRIL	332	6.4%	206	62.0%	125	37.7%	1	0.3%
MAY	386	16.3%	242	62.7%	143	37.0%	1	0.3%
JUNE	284	-26.4%	184	64.8%	98	34.5%	2	0.7%
TOTAL	3,776		2,379	63.0%	1,383	36.6%	14	0.4%

SYSTEM TOTAL

JULY	1,072		608	56.7%	455	42.4%	9	0.8%
AUGUST	1,273	18.8%	726	57.0%	539	42.3%	8	0.6%
SEPTEMBER	1,199	-5.8%	706	58.9%	486	40.5%	7	0.6%
OCTOBER	1,270	5.9%	738	58.1%	519	40.9%	13	1.0%
NOVEMBER	1,237	-2.6%	681	55.1%	544	44.0%	12	1.0%
DECEMBER	979	-20.9%	563	57.5%	405	41.4%	11	1.1%
JANUARY	1,367	39.6%	826	60.4%	531	38.8%	10	0.7%
FEBRUARY	1,178	-13.8%	652	55.3%	511	43.4%	15	1.3%
MARCH	1,277	8.4%	740	57.9%	519	40.6%	18	1.4%
APRIL	1,294	1.3%	747	57.7%	531	41.0%	16	1.2%
MAY	1,337	3.3%	808	60.4%	519	38.8%	10	0.7%
JUNE	1,105	-17.4%	672	60.8%	422	38.2%	11	1.0%
TOTAL	14,588		8,467	58.0%	5,981	41.0%	140	1.0%

Admission statistics are incomplete because all data are not received by TDOC immediately after sentencing. In some cases information is not received until several months after sentencing; therefore, the numbers for any given month may be different from the previous month's report.

**FELON ADMISSIONS IN TENNESSEE
FISCAL YEARS 1996/97 - 2006/07**

TOTAL ADMISSIONS	PERCENT CHANGE	NEW COMMITS	PERCENT OF TOTAL	VIOLATORS RETURNED	PERCENT OF TOTAL	ESCAPEES & OTHERS	PERCENT OF TOTAL
------------------	----------------	-------------	------------------	--------------------	------------------	-------------------	------------------

TDOC								
1996-97	7,458	3.3%	3,993	53.5%	3,368	45.2%	97	1.3%
1997-98	8,660	16.1%	4,837	55.9%	3,719	42.9%	104	1.2%
1998-99	8,452	-2.4%	4,905	58.0%	3,464	41.0%	83	1.0%
1999-00	8,694	2.9%	5,249	60.4%	3,350	38.5%	95	1.1%
2000-01	9,037	3.9%	5,381	59.5%	3,514	38.9%	142	1.6%
2001-02	9,608	6.3%	5,644	58.7%	3,848	40.0%	116	1.2%
2002-03	9,529	-0.8%	5,658	59.4%	3,769	39.6%	102	1.1%
2003-04	10,262	7.7%	6,086	59.3%	4,047	39.4%	129	1.3%
2004-05	10,417	1.5%	6,027	57.9%	4,275	41.0%	115	1.1%
2005-06	10,913	1.5%	6,299	57.9%	4,492	41.0%	122	1.1%
2006-07	10,812	-0.9%	6,088	56.3%	4,598	42.5%	126	1.2%

LOCALLY SENTENCED								
1996-97	5,108	7.6%	3,649	71.4%	1,394	27.3%	65	1.3%
1997-98	4,941	-3.3%	3,447	69.8%	1,434	29.0%	60	1.2%
1998-99	4,721	-4.5%	3,202	67.8%	1,490	31.6%	29	0.6%
1999-00	4,756	0.7%	3,510	73.8%	1,224	25.7%	22	0.5%
2000-01	4,405	-7.4%	2,982	67.7%	1,388	31.5%	35	0.8%
2001-02	4,022	-8.7%	2,693	67.0%	1,307	32.5%	22	0.5%
2002-03	3,733	-7.2%	2,405	64.4%	1,308	35.0%	20	0.5%
2003-04	3,582	-4.0%	2,350	65.6%	1,214	33.9%	18	0.5%
2004-05	3,759	4.9%	2,413	64.2%	1,327	35.3%	19	0.5%
2005-06	3,638	4.9%	2,321	64.2%	1,296	35.3%	21	0.5%
2006-07	3,776	3.8%	2,379	63.0%	1,383	36.6%	14	0.4%

SYSTEM TOTAL								
1996-97	12,566	4.9%	7,642	60.8%	4,762	37.9%	162	1.3%
1997-98	13,601	8.2%	8,284	60.9%	5,153	37.9%	164	1.2%
1998-99	13,173	-3.1%	8,107	61.5%	4,954	37.6%	112	0.9%
1999-00	13,450	2.1%	8,759	65.1%	4,574	34.0%	117	0.9%
2000-01	13,442	-0.1%	8,363	62.2%	4,902	36.5%	177	1.3%
2001-02	13,630	1.4%	8,337	61.2%	5,155	37.8%	138	1.0%
2002-03	13,262	-2.7%	8,063	60.8%	5,077	38.3%	122	0.9%
2003-04	13,844	4.4%	8,436	60.9%	5,261	38.0%	147	1.1%
2004-05	14,176	2.4%	8,440	59.5%	5,602	39.5%	134	0.9%
2005-06	14,551	2.4%	8,620	59.5%	5,788	39.5%	143	0.9%
2006-07	14,588	0.3%	8,467	58.0%	5,981	41.0%	140	1.0%

FELON RELEASES IN TENNESSEE FISCAL YEAR 2007/2008

TOTAL RELEASES	PERCENT CHANGE	PAROLE	PERCENT OF TOTAL	PROBATION COM. COR.	PERCENT OF TOTAL	EXPIRATION & OTHERS	PERCENT OF TOTAL
----------------	----------------	--------	------------------	---------------------	------------------	---------------------	------------------

TDOC

JULY	602		309	51.3%	66	11.0%	227	37.7%
AUGUST	652	8.3%	366	56.1%	61	9.4%	225	34.5%
SEPTEMBER	467	-28.4%	227	48.6%	63	13.5%	177	37.9%
OCTOBER								
NOVEMBER								
DECEMBER								
JANUARY								
FEBRUARY								
MARCH								
APRIL								
MAY								
JUNE								
TOTAL	1,721		902	52.4%	190	11.0%	629	36.5%

TDOC BACKUP

JULY	424		49	11.6%	261	61.6%	114	26.9%
AUGUST	416	-1.9%	49	11.8%	241	57.9%	126	30.3%
SEPTEMBER	333	-20.0%	39	11.7%	198	59.5%	96	28.8%
OCTOBER								
NOVEMBER								
DECEMBER								
JANUARY								
FEBRUARY								
MARCH								
APRIL								
MAY								
JUNE								
TOTAL	1,173		137	11.7%	700	59.7%	336	28.6%

LOCALLY SENTENCED

JULY	278		24	8.6%	154	55.4%	100	36.0%
AUGUST	306	10.1%	38	12.4%	148	48.4%	120	39.2%
SEPTEMBER	255	-16.7%	23	9.0%	117	45.9%	115	45.1%
OCTOBER								
NOVEMBER								
DECEMBER								
JANUARY								
FEBRUARY								
MARCH								
APRIL								
MAY								
JUNE								
TOTAL	839		85	10.1%	419	49.9%	335	39.9%

SYSTEM TOTAL

JULY	1,304		382	29.3%	481	36.9%	441	33.8%
AUGUST	1,374	5.4%	453	33.0%	450	32.8%	471	34.3%
SEPTEMBER	1,055	-23.2%	289	27.4%	378	35.8%	388	36.8%
OCTOBER								
NOVEMBER								
DECEMBER								
JANUARY								
FEBRUARY								
MARCH								
APRIL								
MAY								
JUNE								
TOTAL	3,733		1,124	30.1%	1,309	35.1%	1,300	34.8%

Release statistics are incomplete because all data are not received by TDOC immediately after inmates are released. Therefore, the numbers for any given month may be different from the previous month's report.

FELON RELEASES IN TENNESSEE FISCAL YEAR 2006/2007

TOTAL RELEASES	PERCENT CHANGE	PAROLE	PERCENT OF TOTAL	PROBATION COM. COR.	PERCENT OF TOTAL	EXPIRATION & OTHERS	PERCENT OF TOTAL
----------------	----------------	--------	------------------	---------------------	------------------	---------------------	------------------

TDOC

JULY	590		281	47.6%	87	14.7%	222	37.6%
AUGUST	634	7.5%	345	54.4%	77	12.1%	212	33.4%
SEPTEMBER	506	-20.2%	252	49.8%	55	10.9%	199	39.3%
OCTOBER	609	20.4%	320	52.5%	91	14.9%	198	32.5%
NOVEMBER	467	-23.3%	228	48.8%	64	13.7%	175	37.5%
DECEMBER	526	12.6%	260	49.4%	74	14.1%	192	36.5%
JANUARY	572	8.7%	280	49.0%	80	14.0%	212	37.1%
FEBRUARY	497	-13.1%	249	50.1%	59	11.9%	189	38.0%
MARCH	515	3.6%	285	55.3%	52	10.1%	178	34.6%
APRIL	552	7.2%	277	50.2%	56	10.1%	219	39.7%
MAY	647	17.2%	339	52.4%	89	13.8%	219	33.8%
JUNE	514	-20.6%	274	53.3%	52	10.1%	188	36.6%
TOTAL	6,629		3,390	51.1%	836	12.6%	2,403	36.2%

TDOC BACKUP

JULY	441		45	10.2%	280	63.5%	116	26.3%
AUGUST	515	16.8%	61	11.8%	345	67.0%	109	21.2%
SEPTEMBER	455	-11.7%	48	10.5%	286	62.9%	121	26.6%
OCTOBER	468	2.9%	60	12.8%	275	58.8%	133	28.4%
NOVEMBER	440	-6.0%	42	9.5%	277	63.0%	121	27.5%
DECEMBER	468	6.4%	44	9.4%	306	65.4%	118	25.2%
JANUARY	441	-5.8%	49	11.1%	275	62.4%	117	26.5%
FEBRUARY	402	-8.8%	47	11.7%	234	58.2%	121	30.1%
MARCH	445	10.7%	54	12.1%	256	57.5%	135	30.3%
APRIL	500	12.4%	47	9.4%	314	62.8%	139	27.8%
MAY	437	-12.6%	51	11.7%	272	62.2%	114	26.1%
JUNE	414	-5.3%	47	11.4%	256	61.8%	111	26.8%
TOTAL	5,426		595	11.0%	3,376	62.2%	1,455	26.8%

LOCALLY SENTENCED

JULY	289		28	9.7%	141	48.8%	120	41.5%
AUGUST	330	14.2%	25	7.6%	174	52.7%	131	39.7%
SEPTEMBER	301	-8.8%	33	11.0%	133	44.2%	135	44.9%
OCTOBER	276	-8.3%	30	10.9%	126	45.7%	120	43.5%
NOVEMBER	259	-6.2%	27	10.4%	120	46.3%	112	43.2%
DECEMBER	293	13.1%	34	11.6%	143	48.8%	116	39.6%
JANUARY	279	-4.8%	26	9.3%	149	53.4%	104	37.3%
FEBRUARY	242	-13.3%	20	8.3%	135	55.8%	87	36.0%
MARCH	284	17.4%	23	8.1%	139	48.9%	122	43.0%
APRIL	326	14.8%	29	8.9%	187	57.4%	110	33.7%
MAY	306	-6.1%	37	12.1%	144	47.1%	125	40.8%
JUNE	283	-7.5%	38	13.4%	132	46.6%	113	39.9%
TOTAL	3,468		350	10.1%	1,723	49.7%	1,395	40.2%

SYSTEM TOTAL

JULY	1,320		354	26.8%	508	38.5%	458	34.7%
AUGUST	1,479	12.0%	431	29.1%	596	40.3%	452	30.6%
SEPTEMBER	1,262	-14.7%	333	26.4%	474	37.6%	455	36.1%
OCTOBER	1,353	7.2%	410	30.3%	492	36.4%	451	33.3%
NOVEMBER	1,166	-13.8%	297	25.5%	461	39.5%	408	35.0%
DECEMBER	1,287	10.4%	338	26.3%	523	40.6%	426	33.1%
JANUARY	1,292	0.4%	355	27.5%	504	39.0%	433	33.5%
FEBRUARY	1,141	-11.7%	316	27.7%	428	37.5%	397	34.8%
MARCH	1,244	9.0%	362	29.1%	447	35.9%	435	35.0%
APRIL	1,378	10.8%	353	25.6%	557	40.4%	468	34.0%
MAY	1,390	0.9%	427	30.7%	505	36.3%	458	32.9%
JUNE	1,211	-12.9%	359	29.6%	440	36.3%	412	34.0%
TOTAL	15,523		4,335	27.9%	5,935	38.2%	5,253	33.8%

Release statistics are incomplete because all data are not received by TDOC immediately after inmates are released. Therefore, the numbers for any given month may be different from the previous month's report.

FELON RELEASES IN TENNESSEE FISCAL YEARS 1996/97 - 2006/07

	TOTAL RELEASES	PERCENT CHANGE	PAROLE	PERCENT OF TOTAL	PROBATION COM. COR.	PERCENT OF TOTAL	EXPIRATION & OTHERS	PERCENT OF TOTAL
--	----------------	----------------	--------	------------------	---------------------	------------------	---------------------	------------------

TDOC

1996-97	4,424	0.0%	2,905	65.7%	381	8.6%	1,138	25.7%
1997-98	4,216	-4.7%	2,295	54.4%	563	13.4%	1,358	32.2%
1998-99	4,241	0.6%	2,270	53.5%	444	10.5%	1,527	36.0%
1999-00	4,691	10.6%	2,548	54.3%	506	10.8%	1,637	34.9%
2000-01	5,032	7.3%	2,727	54.2%	568	11.3%	1,737	34.5%
2001-02	4,553	-9.5%	2,224	48.8%	514	11.3%	1,815	39.9%
2002-03	4,842	6.3%	2,262	46.7%	603	12.5%	1,977	40.8%
2003-04	5,493	13.4%	2,552	46.5%	698	12.7%	2,243	40.8%
2004-05	5,804	5.7%	2,767	47.7%	709	12.2%	2,328	40.1%
2005-06	6,146	5.9%	3,152	51.3%	756	12.3%	2,238	36.4%
2006-07	6,629	7.9%	3,390	51.1%	836	12.6%	2,403	36.2%

TDOC BACKUP

1996-97	3,994	39.4%	782	21.0%	2,424	58.7%	788	20.3%
1997-98	3,873	-3.0%	479	12.4%	2,582	66.7%	812	21.0%
1998-99	4,044	4.4%	484	12.0%	2,516	62.2%	1,044	25.8%
1999-00	3,933	-2.7%	546	13.9%	2,315	58.9%	1,072	27.3%
2000-01	3,917	-0.4%	486	12.4%	2,402	61.3%	1,029	26.3%
2001-02	4,212	7.5%	392	9.3%	2,677	63.6%	1,143	27.1%
2002-03	4,539	7.8%	423	9.3%	2,884	63.5%	1,232	27.1%
2003-04	4,788	5.5%	409	8.5%	3,150	65.8%	1,229	25.7%
2004-05	5,235	9.3%	485	9.3%	3,349	64.0%	1,401	26.8%
2005-06	5,913	13.0%	577	9.8%	3,721	62.9%	1,615	27.3%
2006-07	5,426	-8.2%	595	11.0%	3,376	62.2%	1,455	26.8%

LOCALLY SENTENCED

1996-97	4,452	12.2%	894	17.3%	2,184	49.5%	1,374	33.2%
1997-98	4,535	1.9%	591	13.0%	2,412	53.2%	1,532	33.8%
1998-99	4,546	0.2%	558	12.3%	2,326	51.2%	1,662	36.6%
1999-00	4,365	-4.0%	610	14.0%	2,076	47.6%	1,679	38.5%
2000-01	3,998	-8.4%	550	13.8%	1,983	49.6%	1,465	36.6%
2001-02	3,810	-4.7%	387	10.2%	1,909	50.1%	1,514	39.7%
2002-03	3,509	-7.9%	266	7.6%	1,760	50.2%	1,483	42.3%
2003-04	3,311	-5.6%	247	7.5%	1,601	48.4%	1,463	44.2%
2004-05	3,337	0.8%	272	8.2%	1,681	50.4%	1,384	41.5%
2005-06	3,544	6.2%	278	7.8%	1,826	51.5%	1,440	40.6%
2006-07	3,468	-2.1%	350	10.1%	1,723	49.7%	1,395	40.2%

SYSTEM TOTAL

1996-97	12,870	18.7%	4,581	31.7%	4,989	40.1%	3,300	28.1%
1997-98	12,624	-1.9%	3,365	26.7%	5,557	44.0%	3,702	29.3%
1998-99	12,831	1.6%	3,312	25.8%	5,286	41.2%	4,233	33.0%
1999-00	12,989	1.2%	3,704	28.5%	4,897	37.7%	4,388	33.8%
2000-01	12,947	-0.3%	3,763	29.1%	4,953	38.3%	4,231	32.7%
2001-02	12,575	-2.9%	3,003	23.9%	5,100	40.6%	4,472	35.6%
2002-03	12,890	2.5%	2,951	22.9%	5,247	40.7%	4,692	36.4%
2003-04	13,592	5.4%	3,208	23.6%	5,449	40.1%	4,935	36.3%
2004-05	14,376	5.8%	3,524	24.5%	5,739	39.9%	5,113	35.6%
2005-06	15,603	8.5%	4,007	25.7%	6,303	40.4%	5,293	33.9%
2006-07	15,523	-0.5%	4,335	27.9%	5,935	38.2%	5,253	33.8%

**PROJECTED FELON ADMISSIONS VS. ACTUAL
(Projections Updated January 2007)**

FY 2006/2007	NEW COMMITMENTS AND OTHERS				PAROLE/PROBATION/COM. CORR. VIOLATORS				TOTAL ADMISSIONS			
	PROJECTED	ACTUAL	DIFF	% DIFF	PROJECTED	ACTUAL	DIFF	% DIFF	PROJECTED	ACTUAL	DIFF	% DIFF
Jul-06	742	617	125	20.3%	440	455	-15	-3.3%	1,182	1,072	110	10.3%
Aug-06	707	734	-27	-3.7%	523	539	-16	-3.0%	1,230	1,273	-43	-3.4%
Sep-06	768	713	55	7.7%	464	486	-22	-4.5%	1,232	1,199	33	2.8%
Oct-06	716	751	-35	-4.7%	470	519	-49	-9.4%	1,186	1,270	-84	-6.6%
Nov-06	707	693	14	2.0%	431	544	-113	-20.8%	1,138	1,237	-99	-8.0%
Dec-06	689	574	115	20.0%	515	405	110	27.2%	1,204	979	225	23.0%
Jan-07	727	836	-109	-13.0%	479	531	-52	-9.8%	1,206	1,367	-161	-11.8%
Feb-07	702	667	35	5.2%	483	511	-28	-5.5%	1,185	1,178	7	0.6%
Mar-07	736	758	-22	-2.9%	492	519	-27	-5.2%	1,228	1,277	-49	-3.8%
Apr-07	680	763	-83	-10.9%	501	531	-30	-5.6%	1,181	1,294	-113	-8.7%
May-07	744	818	-74	-9.0%	485	519	-34	-6.6%	1,229	1,337	-108	-8.1%
Jun-07	727	683	44	6.4%	472	422	50	11.8%	1,199	1,105	94	8.5%
FY Total	8,645	8,607	38	0.4%	5,755	5,981	-226	-3.8%	14,400	14,588	-188	-1.3%
FY Avg.	720.4	717.3	3.2	1.5%	479.6	498.4	-18.8	-2.9%	1200.0	1215.7	-15.7	-0.4%

FY 2007/2008	NEW COMMITMENTS AND OTHERS				PAROLE/PROBATION/COM. CORR. VIOLATORS				TOTAL ADMISSIONS			
	PROJECTED	ACTUAL	DIFF	% DIFF	PROJECTED	ACTUAL	DIFF	% DIFF	PROJECTED	ACTUAL	DIFF	% DIFF
Jul-07	732	688	44	6.4%	516	526	-10	-1.9%	1,248	1,214	34	2.8%
Aug-07	702	691	11	1.6%	508	484	24	5.0%	1,210	1,175	35	3.0%
Sep-07	758	580	178	30.7%	498	402	96	23.9%	1,256	982	274	27.9%
Oct-07	706				515				1,221			
Nov-07	697				469				1,166			
Dec-07	671				436				1,107			
Jan-08	732				444				1,176			
Feb-08	706				452				1,158			
Mar-08	740				487				1,227			
Apr-08	684				476				1,160			
May-08	749				490				1,239			
Jun-08	732				512				1,244			
FY Total	8,609	1,959	N/A*	N/A*	5,803	1,412	N/A*	N/A*	14,412	3,371	N/A*	N/A*
FY Avg.	717.4	653.0	77.7	12.9%	483.6	470.7	36.7	9.0%	1,201	1,124	114	11.2%

These tables compare the accuracy of the projection model by comparing projected admissions to actual admissions. Months in which the projected admissions are less than actual admissions will be represented with a negative sign.

NOTE: The last three months of actual numbers may change due to the time delay in data entry. It takes approximately 3 to 4 months for all data in any given month to accumulate or "top out".

PROJECTED FELON RELEASES VS. ACTUAL
(Projections Updated January 2007)

2006/2007	PAROLEES				PROBATIONERS & COMMUNITY CORRECTIONS				DISCHARGES & OTHERS				TOTAL RELEASES			
	PROJECTED	ACTUAL	DIFF	% DIFF	PROJECTED	ACTUAL	DIFF	% DIFF	PROJECTED	ACTUAL	DIFF	% DIFF	PROJECTED	ACTUAL	DIFF	% DIFF
Jul-06	320	354	-34	-9.6%	369	508	-139	-27.4%	480	458	22	4.8%	1,169	1,320	-151	-11.4%
Aug-06	354	431	-77	-17.9%	313	596	-283	-47.5%	473	452	21	4.6%	1,140	1,479	-339	-22.9%
Sep-06	347	333	14	4.2%	292	474	-182	-38.4%	441	455	-14	-3.1%	1,080	1,262	-182	-14.4%
Oct-06	373	410	-37	-9.0%	327	492	-165	-33.5%	469	451	18	4.0%	1,169	1,353	-184	-13.6%
Nov-06	347	297	50	16.8%	287	461	-174	-37.7%	480	408	72	17.6%	1,114	1,166	-52	-4.5%
Dec-06	340	338	2	0.6%	386	523	-137	-26.2%	455	426	29	6.8%	1,181	1,287	-106	-8.2%
Jan-07	339	355	-16	-4.5%	554	504	50	9.9%	422	433	-11	-2.5%	1,315	1,292	23	1.8%
Feb-07	364	316	48	15.2%	519	428	91	21.3%	428	397	31	7.8%	1,311	1,141	170	14.9%
Mar-07	360	362	-2	-0.6%	527	447	80	17.9%	467	435	32	7.4%	1,354	1,244	110	8.8%
Apr-07	384	353	31	8.8%	486	557	-71	-12.7%	438	468	-30	-6.4%	1,308	1,378	-70	-5.1%
May-07	382	427	-45	-10.5%	517	505	12	2.4%	415	458	-43	-9.4%	1,314	1,390	-76	-5.5%
Jun-07	372	359	13	3.6%	508	440	68	15.5%	444	412	32	7.8%	1,324	1,211	113	9.3%
FY Total	4,282	4,335	-53	-1.2%	5,085	5,935	-850	-14.3%	5,412	5,253	159	3.0%	14,779	15,523	-744	-4.8%
FY Avg.	356.8	361.3	-4.4	-0.2%	423.8	494.6	-70.8	-13.0%	451.0	437.8	13.3	3.3%	1,231.6	1,294	-62.0	-4.2%

2007/2008	PAROLEES				PROBATIONERS & COMMUNITY CORRECTIONS				DISCHARGES & OTHERS				TOTAL RELEASES			
	PROJECTED	ACTUAL	DIFF	% DIFF	PROJECTED	ACTUAL	DIFF	% DIFF	PROJECTED	ACTUAL	DIFF	% DIFF	PROJECTED	ACTUAL	DIFF	% DIFF
Jul-07	357	382	-25	-6.5%	525	481	44	9.1%	458	441	17	3.9%	1,340	1,304	36	2.8%
Aug-07	373	453	-80	-17.7%	465	450	15	3.3%	442	471	-29	-6.2%	1,280	1,374	-94	-6.8%
Sep-07	403	289	114	39.4%	576	378	198	52.4%	423	388	35	9.0%	1,402	1,055	347	32.9%
Oct-07	401				522				427				1,350			
Nov-07	379				508				487				1,374			
Dec-07	409				487				439				1,335			
Jan-08	426				509				448				1,383			
Feb-08	402				492				451				1,345			
Mar-08	402				492				443				1,337			
Apr-08	356				528				473				1,357			
May-08	392				514				457				1,363			
Jun-08	438				503				459				1,400			
FY Total	4,738	1,124	N/A*	N/A*	6,121	1,309	N/A*	N/A*	5,407	1,300	N/A*	N/A*	16,266	3,733	N/A*	N/A*
FY Avg.	394.8	374.7	3.0	5.1%	510.1	436.3	85.7	21.6%	450.6	433.3	7.7	2.2%	1,355.5	1,244	96.3	9.6%

These tables compare the accuracy of the projection model by comparing projected releases to actual releases. Months in which the projected releases were less than actual releases will be represented with a negative sign.

NOTE: The last three months of actual numbers may change due to the time delay in data entry. It takes approximately 3 to 4 months for all data in any given month to accumulate or "top out".

**COMMUNITY SERVICES POPULATION
as of September 2007**

	Community Services Total	Monthly Percent Change	Regular Probation	Percent of Total	Intensive Probation	Percent of Total	Community Corrections	Percent of Total
FY AVERAGE								
2001/2002	40,148	0.8%	33,812	84.2%	1,053	2.6%	5,284	13.2%
2002/2003	42,043	0.2%	35,346	84.1%	982	2.3%	5,715	13.6%
2003/2004	43,417	0.4%	36,582	84.3%	1,010	2.3%	5,825	13.4%
2004/2005	46,140	0.8%	39,173	84.9%	1,010	2.2%	5,957	12.9%
2005/2006	47,529	0.2%	40,308	84.8%	988	2.1%	6,234	13.1%
2006/2007								
July	49,357	-5.7%	42,018	85.1%	952	1.9%	6,387	12.9%
August	49,684	0.7%	42,321	85.2%	965	1.9%	6,398	12.9%
September	50,076	0.8%	42,691	85.3%	942	1.9%	6,443	12.9%
October	50,442	0.7%	43,052	85.3%	922	1.8%	6,468	12.8%
November	50,884	0.9%	43,529	85.5%	901	1.8%	6,454	12.7%
December	50,949	0.1%	43,580	85.5%	925	1.8%	6,444	12.6%
January	51,318	0.7%	43,913	85.6%	928	1.8%	6,477	12.6%
February	51,600	0.5%	44,134	85.5%	925	1.8%	6,541	12.7%
March	51,774	0.3%	44,215	85.4%	960	1.9%	6,599	12.7%
April	51,995	0.4%	44,422	85.4%	936	1.8%	6,637	12.8%
May	52,138	0.3%	44,553	85.5%	910	1.7%	6,675	12.8%
June	52,345	0.4%	44,837	85.7%	904	1.7%	6,604	12.6%
FY Average	51,047	0.0%	43,605	85.4%	931	1.8%	6,511	12.8%

	Community Services Total	Monthly Percent Change	Regular Probation	Percent of Total	Intensive Probation	Percent of Total	Community Corrections	Percent of Total
2007/2008								
July	52,521	0.3%	44,985	85.7%	915	1.7%	6,621	12.6%
August	52,636	0.2%	45,180	85.8%	891	1.7%	6,565	12.5%
September	52,785	0.3%	45,244	85.7%	928	1.8%	6,613	12.5%
October								
November								
December								
January								
February								
March								
April								
May								
June								
FY Average	52,647	0.3%	45,136	85.7%	911	1.7%	6,600	12.5%

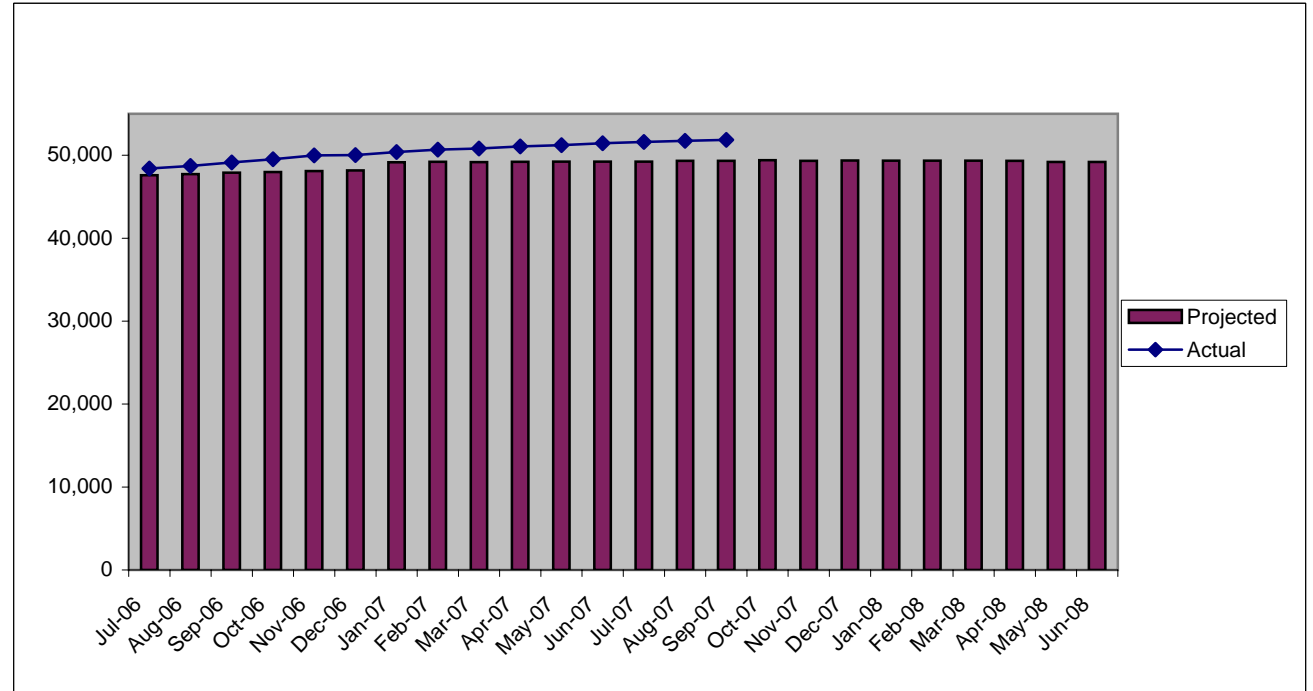
CORRECTION: Per BOPP the December probation counts were corrected on 1/23/2004

*Note: Data are not available at this time due to a change in the reporting procedure effective July 31, 2001.

Population figures on each year-end summary line are monthly averages. Percent change is calculated from the first month of the year to the last month of the year.

COMMUNITY SERVICES PROJECTIONS VS. ACTUAL

	Projected	Actual	DIFF	% DIFF
Jul-05	46,134	41,174	4,960	12.0%
Aug-05	46,214	46,180	34	0.1%
Sep-05	46,411	46,247	164	0.4%
Oct-05	46,563	46,477	86	0.2%
Nov-05	46,821	46,580	241	0.5%
Dec-05	46,879	46,826	53	0.1%
Jan-06	47,016	46,993	23	0.0%
Feb-06	47,267	47,175	92	0.2%
Mar-06	47,384	47,266	118	0.2%
Apr-06	47,412	47,558	-146	-0.3%
May-06	47,431	47,868	-437	-0.9%
Jun-06	47,477	48,159	-682	-1.4%
Jul-06	47,584	48,405	-821	-1.7%
Aug-06	47,727	48,719	-992	-2.0%
Sep-06	47,892	49,134	-1,242	-2.5%
Oct-06	47,987	49,520	-1,533	-3.1%
Nov-06	48,088	49,983	-1,895	-3.8%
Dec-06	48,162	50,024	-1,862	-3.7%
Jan-07	49,163	50,390	-1,227	-2.4%
Feb-07	49,208	50,675	-1,467	-2.9%
Mar-07	49,177	50,814	-1,637	-3.2%
Apr-07	49,219	51,059	-1,840	-3.6%
May-07	49,223	51,228	-2,005	-3.9%
Jun-07	49,232	51,441	-2,209	-4.3%
Jul-07	49,241	51,606	-2,365	-4.6%
Aug-07	49,322	51,745	-2,423	-4.7%
Sep-07	49,325	51,857	-2,532	-4.9%
Oct-07	49,403			
Nov-07	49,321			
Dec-07	49,360			
Jan-08	49,338			
Feb-08	49,349			
Mar-08	49,346			
Apr-08	49,323			
May-08	49,190			
Jun-08	49,197			



PROJECTIONS UPDATED January 2007*

***NOTE:** This chart *ONLY* includes projected population totals for Community Corrections and Regular Probation.

COMMUNITY SERVICES POPULATION FY END (JUNE 30) FY 1995/96 - FY 2006/07

	TOTAL COM.SRV.POP	TOTAL CHANGE	REGULAR PROBATION	PERCENT OF TOTAL	INTENSIVE PROBATION	PERCENT OF TOTAL	COMM. CORR.	PERCENT OF TOTAL
1995-96	30,387		25,237		1,762		3,388	
1996-97	32,051	5.5%	26,333	82.2%	1,786	5.6%	3,932	12.3%
1997-98	34,076	6.3%	28,432	83.4%	1,788	5.2%	3,856	11.3%
1998-99	36,748	7.8%	30,804	83.8%	1,644	4.5%	4,300	11.7%
1999-00	36,533	-0.6%	30,160	82.6%	1,657	4.5%	4,716	12.9%
2000-01	38,075	4.2%	31,458	82.6%	1,751	4.6%	4,866	12.8%
2001-02	41,652	9.4%	35,097	84.3%	975	2.3%	5,580	13.4%
2002-03	42,388	1.8%	35,636	84.1%	975	2.3%	5,777	13.6%
2003-04	44,476	4.9%	37,617	84.6%	1,067	2.4%	5,792	13.0%
2004-05	48,984	10.1%	41,950	85.6%	965	2.0%	6,069	12.4%
2005-06	49,126	0.3%	41,763	85.0%	967	2.0%	6,396	13.0%
2006-07	52,345	6.6%	44,837	85.7%	904	1.7%	6,604	12.6%

COMMUNITY SERVICES POPULATION AVERAGES FY 1995/96 - FY 2006/07

	AVG. TOTAL COM.SRV.POP	ANNUAL CHANGE	REGULAR PROBATION	PERCENT OF TOTAL	INTENSIVE PROBATION	PERCENT OF TOTAL	COMM. CORR.	PERCENT OF TOTAL
1995-96	29,727	7.6%	24,680	83.6%	1,718	5.7%	3,329	10.7%
1996-97	31,361	5.5%	25,843	82.4%	1,819	5.8%	3,699	11.8%
1997-98	33,007	5.2%	27,365	82.9%	1,772	5.4%	3,870	11.7%
1998-99	34,837	5.5%	29,016	83.3%	1,757	5.0%	4,064	11.7%
1999-00	35,772	2.7%	29,583	82.7%	1,624	4.5%	4,565	12.8%
2000-01	37,529	4.9%	31,068	82.8%	1,725	4.6%	4,736	12.6%
2001-02	40,149	7.0%	33,812	84.2%	1,053	2.6%	5,284	13.2%
2002-03	42,043	4.7%	35,346	84.1%	982	2.3%	5,715	13.6%
2003-04	43,417	3.3%	36,582	84.3%	1,010	2.3%	5,825	13.4%
2004-05	46,140	6.3%	39,173	84.9%	1,010	2.2%	5,957	12.9%
2005-06	47,530	3.0%	40,308	84.8%	988	2.1%	6,234	13.1%
2006-07	51,047	7.4%	43,605	85.4%	931	1.8%	6,511	12.8%

**PAROLE GRANT RATES IN TENNESSEE
FISCAL YEARS 2002/03 - 2007/08**

TOTAL HEARINGS	PAROLE GRANTED	% OF TOTAL	PAROLE DENIED	% OF TOTAL	PAROLE DENIED/WAIVER	% OF TOTAL	CONT.	% OF TOTAL	CONT./WAIVER	% OF TOTAL
----------------	----------------	------------	---------------	------------	----------------------	------------	-------	------------	--------------	------------

2002/2003

TOTAL	12,440	3,261	26.2%	8,211	66.0%		968	7.8%			
2003/2004											
TOTAL	12,658	3,481	27.5%	8,238	65.1%		939	7.4%			
2004/2005											
TOTAL	13,023	3,845	29.5%	7,260	55.7%	8,139	62.5%	866	6.6%	173	1.3%
2005/2006											
TOTAL	14,126	4,400	31.1%	7,656	54.2%	935	6.6%	918	6.5%	217	1.5%

2006/2007*

JULY	1,281	465	36.3%	635	49.6%	58	4.5%	86	6.7%	37	2.9%
AUGUST	1,358	419	30.9%	748	55.1%	78	5.7%	68	5.0%	45	3.3%
SEPTEMBER	1,161	407	35.1%	606	52.2%	62	5.3%	64	5.5%	22	1.9%
OCTOBER	1,053	376	35.7%	517	49.1%	76	7.2%	59	5.6%	25	2.4%
NOVEMBER	1,288	446	34.6%	676	52.5%	75	5.8%	63	4.9%	28	2.2%
DECEMBER	883	353	40.0%	433	49.0%	48	5.4%	36	4.1%	13	1.5%
JANUARY	1,180	439	37.2%	583	49.4%	66	5.6%	75	6.4%	17	1.4%
FEBRUARY	1,164	392	33.7%	618	53.1%	71	6.1%	69	5.9%	14	1.2%
MARCH	1,107	381	34.4%	596	53.8%	51	4.6%	54	4.9%	25	2.3%
APRIL	1,138	371	32.6%	614	54.0%	73	6.4%	56	4.9%	24	2.1%
MAY	1,213	371	30.6%	699	57.6%	58	4.8%	64	5.3%	21	1.7%
JUNE	1,159	359	31.0%	634	54.7%	77	6.6%	78	6.7%	11	0.9%
TOTAL	13,985	4,779	34.2%	7,359	52.6%	793	5.7%	772	5.5%	282	2.0%

2007/2008

JULY	1,464	463	31.6%	798	54.5%	95	6.5%	83	5.7%	25	1.7%
AUGUST	1,334	386	28.9%	747	56.0%	77	5.8%	98	7.3%	26	1.9%
SEPTEMBER	951	301	31.7%	516	54.3%	57	6.0%	62	6.5%	15	1.6%
OCTOBER											
NOVEMBER											
DECEMBER											
JANUARY											
FEBRUARY											
MARCH											
APRIL											
MAY											
JUNE											
TOTAL	3,749	1,150	30.7%	2,061	55.0%	229	6.1%	243	6.5%	66	1.8%

* As of the May 2007 report, the decline category has been broken out into decline and decline/waiver, and the continue category has been broken out into continue and continue/waiver. These categories are more definitive and will ensure that TDOC and BOPP reported statistics are more consistent. Data for this breakout is not available prior to FY 2005-2006.

Parole statistics are incomplete because all data are not received by TDOC immediately after inmates are paroled. Therefore, the numbers for any given month may be different from the previous month's report

PAROLE POPULATIONS FISCAL YEARS 2002/2003 - 2007/2008

2002/2003 AVERAGE ACTIVE POPULATION 7,906
2003/2004 AVERAGE ACTIVE POPULATION 8,008
2004/2005 AVERAGE ACTIVE POPULATION 8,369

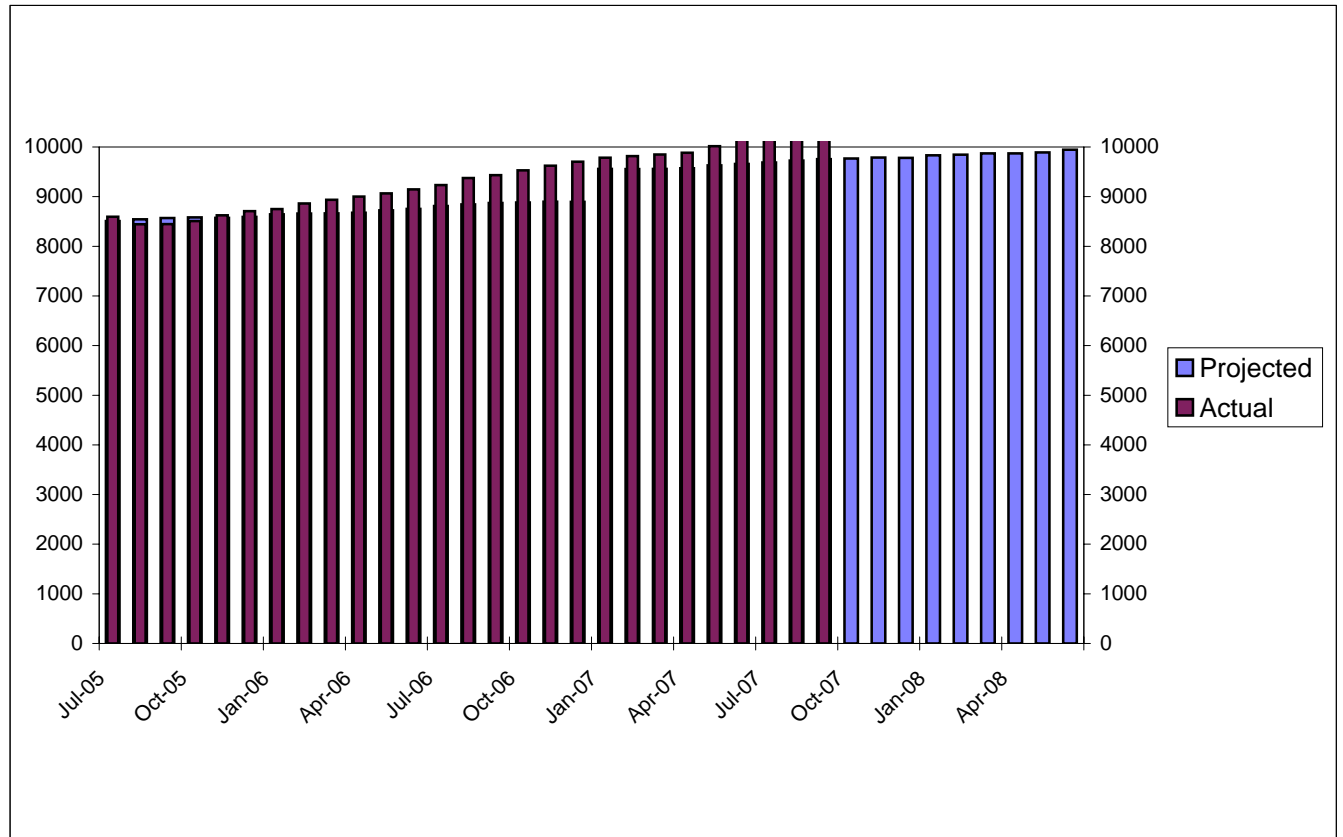
2005/2006	ACTIVE	MONTHLY	PERCENT
	POPULATION	CHANGE	CHANGE
JULY	8,596	39	0.5%
AUGUST	8,442	-154	-1.8%
SEPTEMBER	8,446	4	0.0%
OCTOBER	8,507	61	0.7%
NOVEMBER	8,623	116	1.4%
DECEMBER	8,707	84	1.0%
JANUARY	8,748	41	0.5%
FEBRUARY	8,863	115	1.3%
MARCH	8,936	73	0.8%
APRIL	9,002	66	0.7%
MAY	9,065	63	0.7%
JUNE	9,146	81	0.9%
AVERAGE	8,757		

2006/2007	ACTIVE	MONTHLY	PERCENT
	POPULATION	CHANGE	CHANGE
JULY	9,233	87	0.1%
AUGUST	9,374	141	0.5%
SEPTEMBER	9,433	59	0.6%
OCTOBER	9,530	97	1.0%
NOVEMBER	9,622	92	1.0%
DECEMBER	9,702	80	0.8%
JANUARY	9,784	82	0.8%
FEBRUARY	9,815	31	0.3%
MARCH	9,850	35	0.4%
APRIL	9,883	33	0.3%
MAY	10,017	134	1.4%
JUNE	10,163	146	1.5%
AVERAGE	9,701		

2007/2008	ACTIVE	MONTHLY	PERCENT
	POPULATION	CHANGE	CHANGE
JULY	10,249	86	0.8%
AUGUST	10,377	128	1.2%
SEPTEMBER	10,392	15	0.1%
OCTOBER			
NOVEMBER			
DECEMBER			
JANUARY			
FEBRUARY			
MARCH			
APRIL			
MAY			
JUNE			
AVERAGE	10,339		

PAROLE POPULATION PROJECTIONS VS. ACTUAL JULY 2005 THROUGH JUNE 2008

	Projected	Actual	Diff.	% Diff.
Jul-05	8509	8596	-87	-1.0%
Aug-05	8542	8442	100	1.2%
Sep-05	8570	8446	124	1.5%
Oct-05	8581	8507	74	0.9%
Nov-05	8571	8623	-52	-0.6%
Dec-05	8593	8707	-114	-1.3%
Jan-06	8642	8748	-106	-1.2%
Feb-06	8659	8863	-204	-2.3%
Mar-06	8663	8936	-273	-3.1%
Apr-06	8674	9002	-328	-3.6%
May-06	8725	9065	-340	-3.8%
Jun-06	8752	9146	-394	-4.3%
Jul-06	8810	9233	-423	-4.6%
Aug-06	8844	9374	-530	-5.7%
Sep-06	8872	9433	-561	-5.9%
Oct-06	8883	9530	-647	-6.8%
Nov-06	8899	9622	-723	-7.5%
Dec-06	8895	9702	-807	-8.3%
Jan-07	9557	9784	-227	-2.3%
Feb-07	9556	9815	-259	-2.6%
Mar-07	9560	9850	-290	-2.9%
Apr-07	9572	9883	-311	-3.1%
May-07	9629	10017	-388	-3.9%
Jun-07	9658	10163	-505	-5.0%
Jul-07	9688	10,249	-561	-5.5%
Aug-07	9726	10,377	-651	-6.3%
Sep-07	9756	10392	-636	-6.1%
Oct-07	9768			
Nov-07	9786			
Dec-07	9782			
Jan-08	9833			
Feb-08	9845			
Mar-08	9871			
Apr-08	9871			
May-08	9891			
Jun-08	9944			



Projections Updated January 2007

BLUE REPORT USER'S GUIDE

Incarcerated Population

TDOC Backup: Felons sentenced to TDOC custody and held in local jails while awaiting transfer to a TDOC institution.

Locally Sentenced: Convicted felons sentenced to serve their time in a local jail. As felony offenders, these persons are under TDOC jurisdiction.

Other Convicted Felons: Convicted felons awaiting sentencing or not yet ready for transfer to TDOC because of other pending charges. Includes technical violators awaiting probable cause/revocation/recission hearing or adjudication of pending charges.

Convicted Misdemeanants: Inmates serving time because of a misdemeanor conviction.

Total Pre-Trial Detainees: Includes inmates charged with either a felony or a misdemeanor but not yet convicted.

Others: Inmates held in local facilities for federal crimes, city ordinances, etc.

Community Corrections: A grant program created in 1985 as an alternative to incarceration. Programs are developed based on the individual needs of the area served.

Admissions

New Commits: Refers to any person convicted of a felony sentenced to TDOC, but who is not on probation or parole. This may include persons who had prior incarcerations.

Violators Returned: Refers to commitment of felons on technical violations of the conditions of their parole or probation, or community correction terms.

Releases

Parole: Felons originally sentenced to an incarceration period and released to serve the remainder of their sentence under supervision.

Probation-Community Correction: Usually non-violent felons sentenced to serve a split sentence; a short jail or prison term and the remainder under state supervision.

General Notes

Backup: All offenders sentenced to TDOC custody are counted as admissions. Some offenders are held in backup at a local jail while awaiting transfer to a TDOC facility. This is due to lack of room for all offenders in TDOC facilities. Offenders in backup can be released for a number of reasons before they are transferred to TDOC. Inmates released from Backup to a TDOC facility are not counted as releases.

Primary Offense: As of July 2000, offenses are categorized according to the Tennessee Incident Based Reporting System (TIBRS) which is based on the FBI's National Incident Based Reporting System (NIBRS). This system of reporting is an attempt to standardize categorical offense reporting across criminal justice agencies. For more detail on how TCA code is categorized according to the TIBRS system, see the TBI website at <http://www.tbi.state.tn.us/tca.htm> or the TDOC Research Brief, "Assessing the Impact of the TIBRS on TDOC Criminal Offense Reporting."

Projected Felon Population-Admissions & Releases: is taken from the Annual Felon Population Projection Report. Ten year felon projections including admissions and releases are estimated every fall in order to help the TDOC in it's long term strategic planning. The current projections can be found on our website at <http://www.state.tn.us/corrections>.

Total TDOC Inmates, considered "backup" for TDOC purposes, refers to inmates sentenced to TDOC custody and held in local jails while awaiting transfer to a TDOC institution.