



**Megasite Authority of West Tennessee
Blue Oval City SR-194 Extension I-40 Exit 39
August 9 , 2022**

Steve Sellers P.E. – Blue Oval City Program Manager

Blue Oval City Current Development Team

Steve Sellers, P.E. – Blue Oval City Program Manager

615-741-0786

Steve.Sellers@tn.gov

Brandon Akins, P.E. - Civil Engineering Manager 2

901-537-1178

Brandon.Akins@tn.gov

James Kelley, P.E. - Director Project Management

615-253-7604

James.D.Kelley@tn.gov

TDOT Divisional Representation

Geotechnical, Environmental, Traffic, Design, Survey, Operations,
Right of Way, Structures, many others.....

Consultant Representation

HDR, Inc., Benesh, Arcadis & Avenue Consultants

Blue Oval City Stakeholders

FORD / Walbridge (CM) / SSOE (Design)

SK Innovation / Ghafari (Design)

FHWA – IAR / NEPA

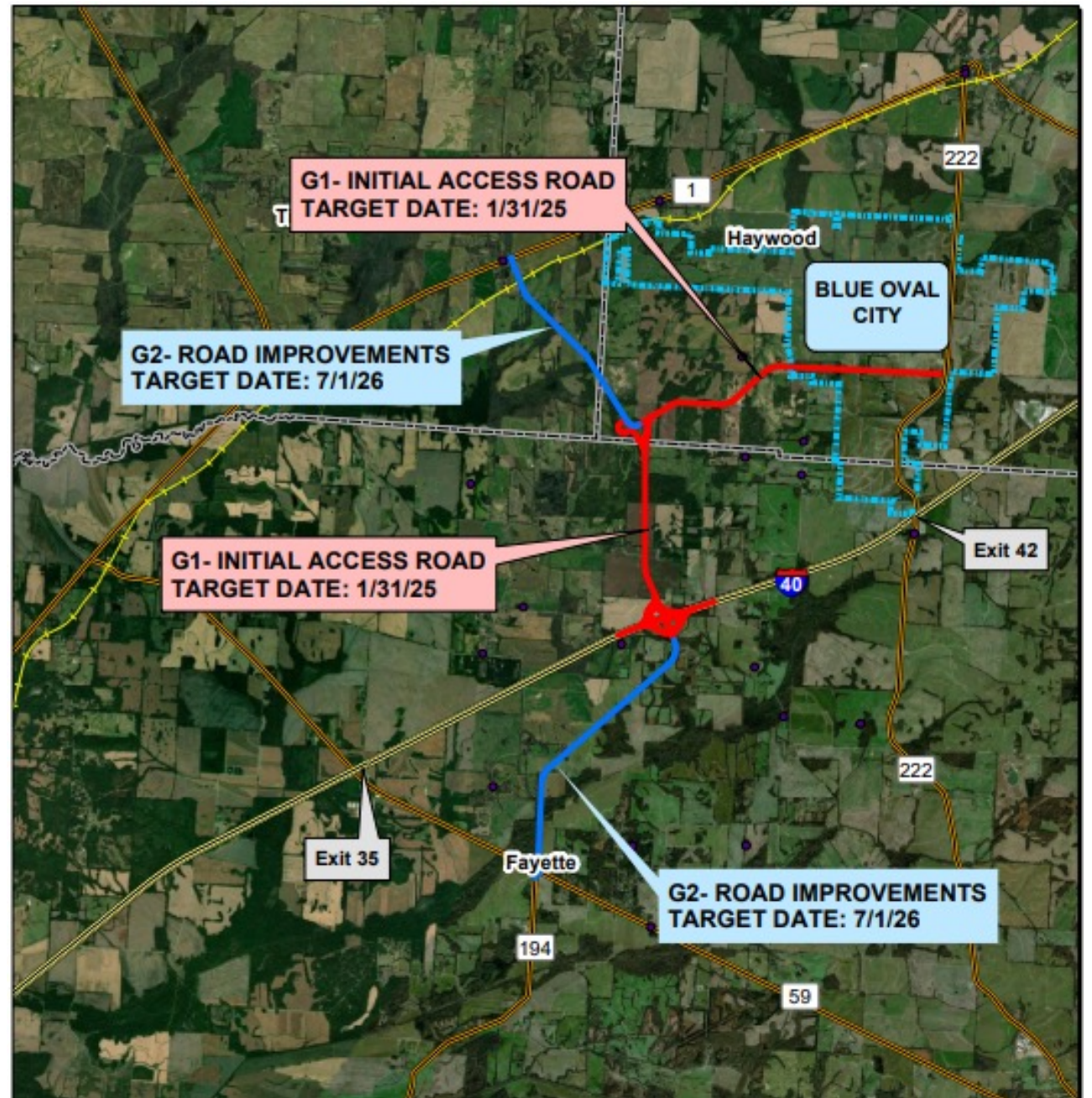
Corp of Engineers – 404 Permit

TVA & Local Utility Owners

County Mayors and County Road Superintendents

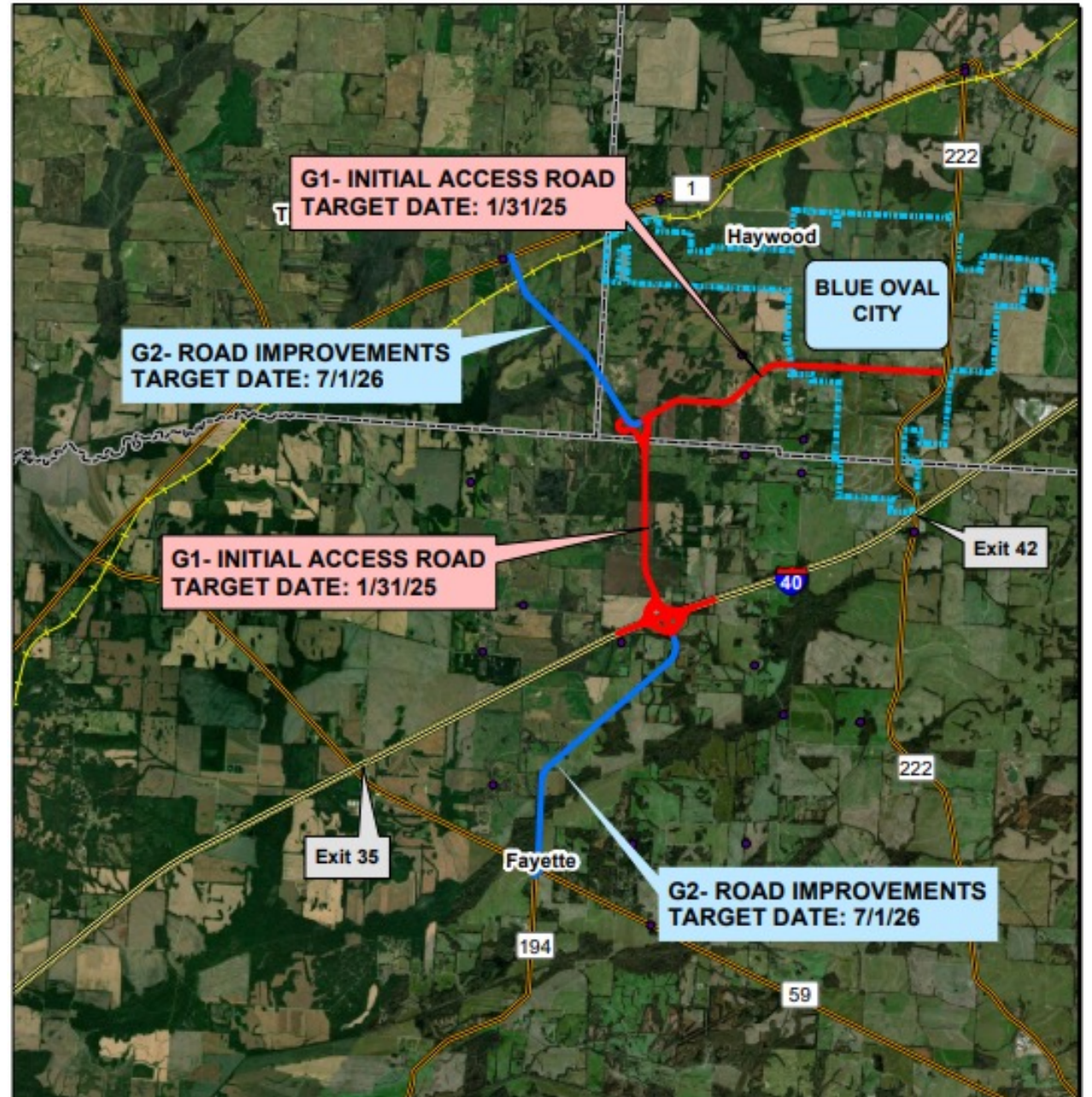
SR-194 Extension (G1 Section)

- Free Flow Interchange to and from I-40 to Blue Oval City (Exit 39)
- SR-194 Extension from I-40 to Connector Road – 2.0 Miles
- SR-468 Extension to SR-222 – 3.6 Miles
- 4-lane Median Divided Roadway Section to Blue Oval City
- Delivery Method - **Construction Manager/General Contractor (CM/GC)**



SR-194 Extension (G2 Section)

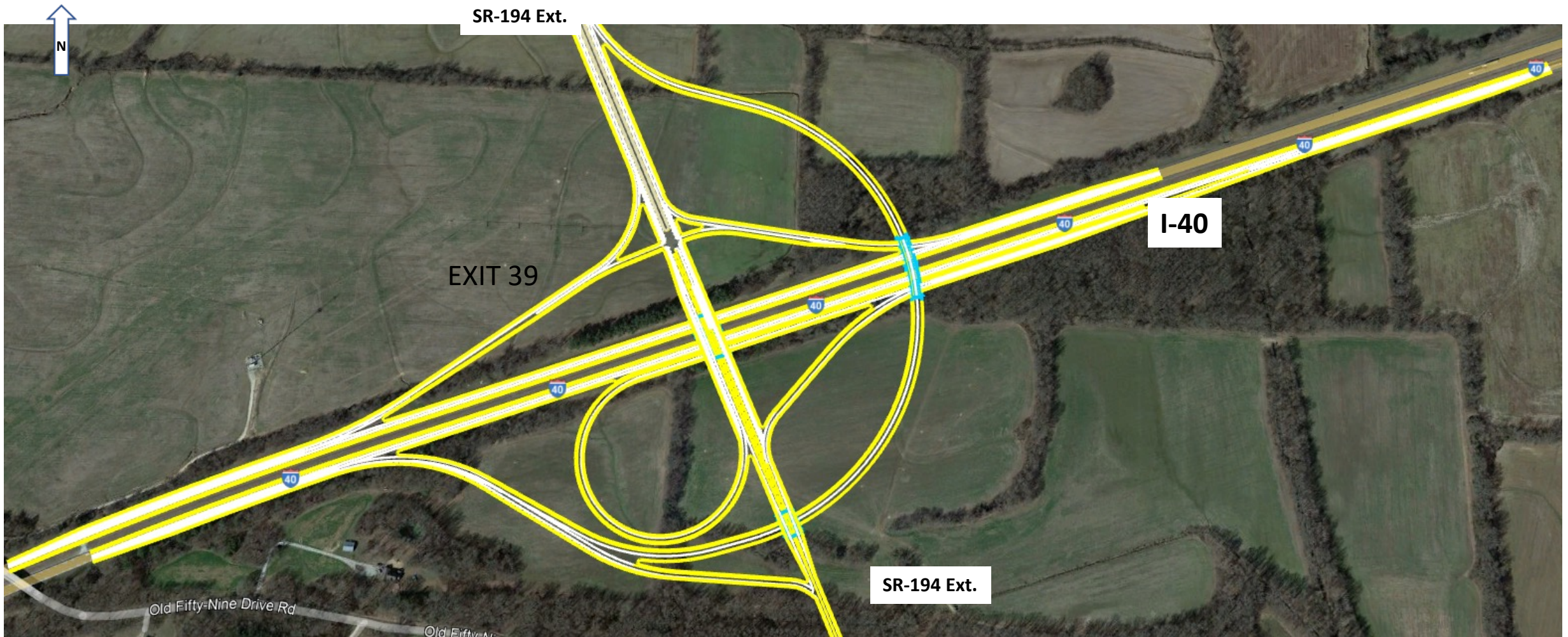
- SR-194 Extension from Connector Road to SR-1 – 2.3 Miles
- SR-194 Extension from I-40 to SR-59 – 3.5 Miles
- 2-lane Rural Roadway Section
- Delivery Method-
Traditional Design-Bid-Build



G1& G2 - Project Progress

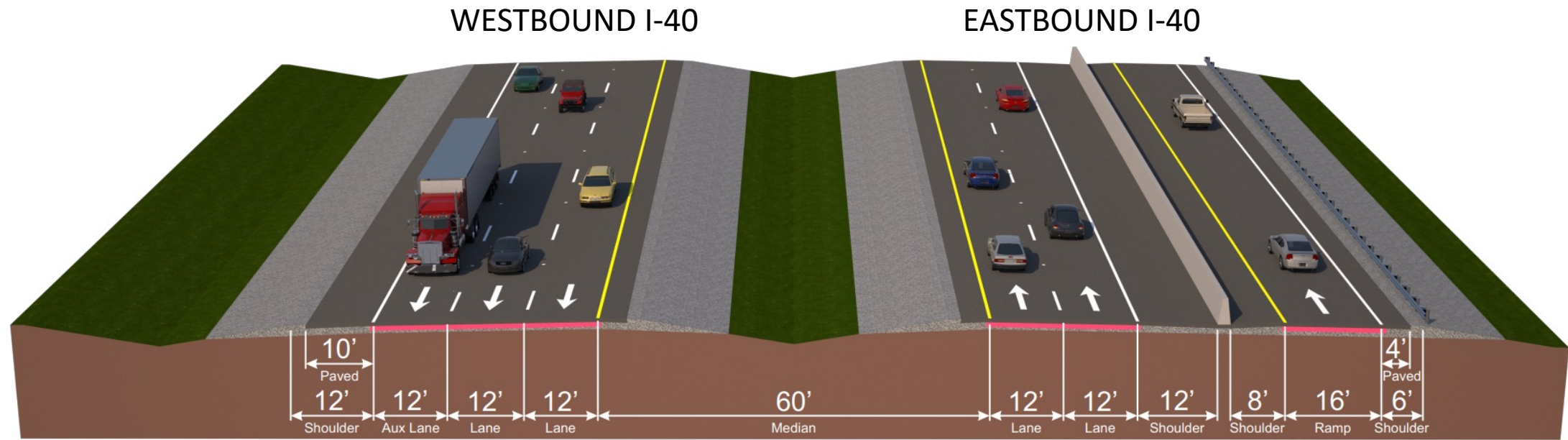
- Interchange Access Request (IAR) submitted to FHWA – In Progress
- G1 and G2 Technical Studies - (Archaeology, Historic, Air, Noise, Hazmat, & Ecology)
- NEPA Review following IAR operational approval
- G1 -ROW Appraisals and in Progress
- Design - Concepts for I-40 Interchange, Line and Grade plans, and coordination with Environmental (Utilizing Open Roads-Bentley)
 - Held Public Design Meeting for G1 July 7th
 - G1 Advanced Functional Set of Plans due August 18th
- G1 and G2 Utilities – Early Notice and Coordination

PROPOSED I-40 EXIT 39 – Freeflow Traffic I-40 to and from Blue Oval City



PROPOSED TYPICAL SECTION

I-40 at Exit 39



Interstate 40
Widening at State Route 194 Ext. Interchange

PROPOSED SR-194 EXTENSIONS

From I-40 Exit 39 Interchange to Northern Connector (SR-468)

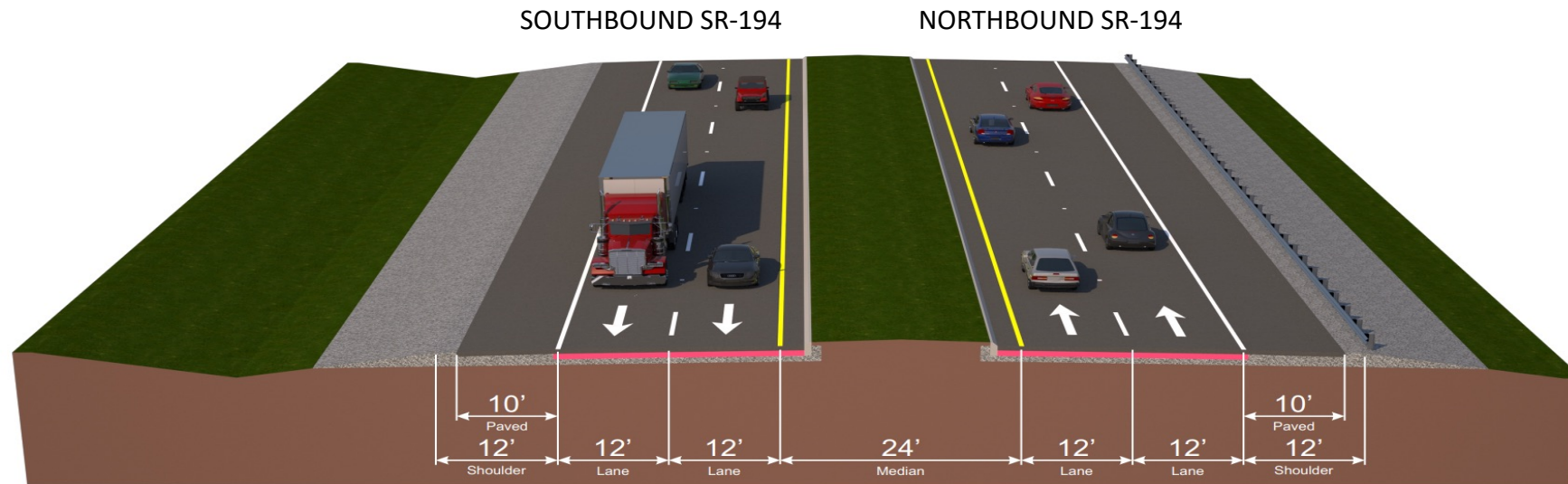


PROPOSED TYPICAL SECTION

SR-194 Extension from I-40 Exit 39 Interchange to Northern Connector (SR-468)

Proposed SR-194 extension between proposed Exit 39 at I-40 and the Northern Connector Interchange

This portion of the proposed SR-194 extension would consist of four 12-foot travel lanes (two lanes in each direction), 12-foot shoulders on either side of the roadway and a 24-foot inside median separating the travel lanes. The design speed would be 55 mph. Full access control would be provided for this portion of the project. A bridge would be constructed over Thorpe Drive to allow continued access by local traffic.



State Route 194 Extension
From Interstate 40 to new State Route 468

NORTHERN CONNECTOR

Interchange SR-194 Extension and SR-468

Northern Connector Interchange

A partial directional interchange is proposed to be constructed at the intersection of the proposed SR-194 extension and SR-468. The proposed SR-194 extension would bridge SR-468. Connection points to the proposed SR-194 extension to the south and north would be constructed at-grade.



SR-468

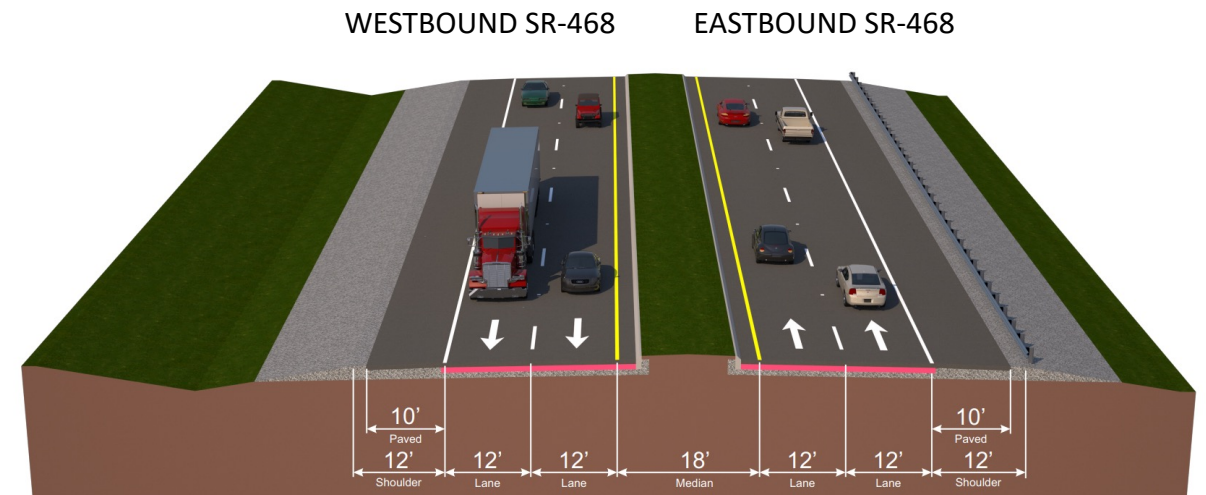
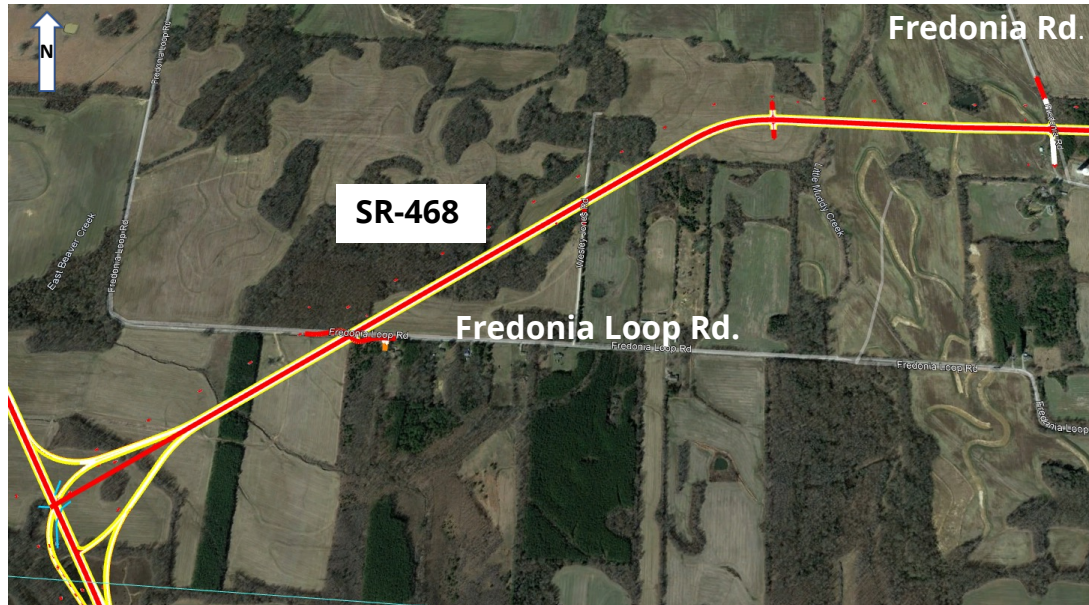
FROM NORTHERN CONNECTOR INTERCHANGE TO SR-222



PROPOSED TYPICAL SECTION

SR-468 from Northern Connector to Fredonia Rd

SR-468 would consist of four 12-foot travel lanes (two lanes in each direction) separated by an 18-foot median (14-foot raised median and two-foot inside shoulders) and 12-foot outside shoulders. The proposed SR-468 would be a limited access-controlled facility to the MRM boundary (Fredonia Rd.).

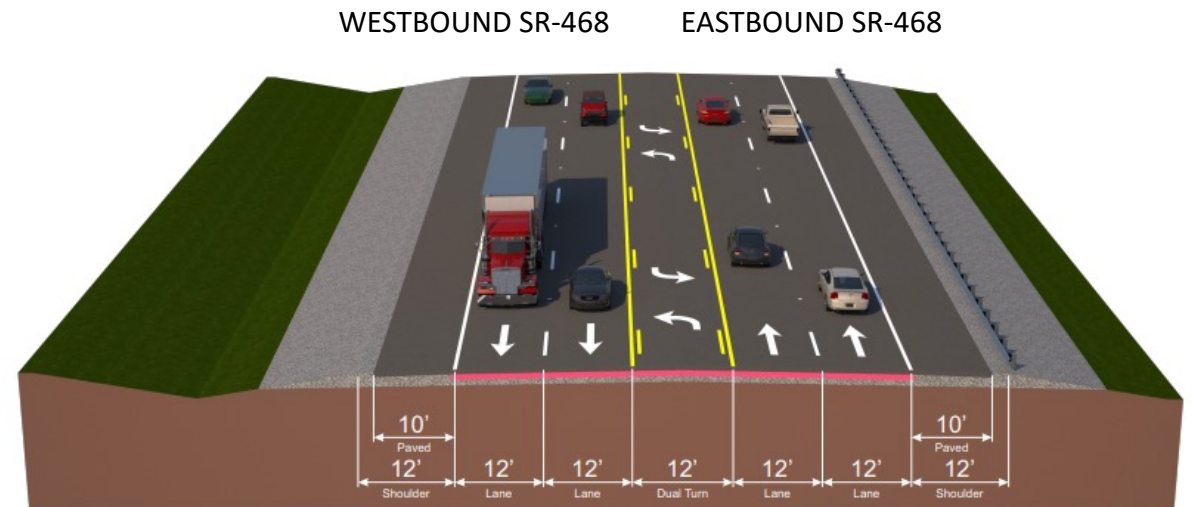


State Route 468
from State Route 194 Ext. to Fredonia Road

SR-468 TYPICAL SECTION

FROM FREDONIA ROAD TO INTERSECTION OF SR-222

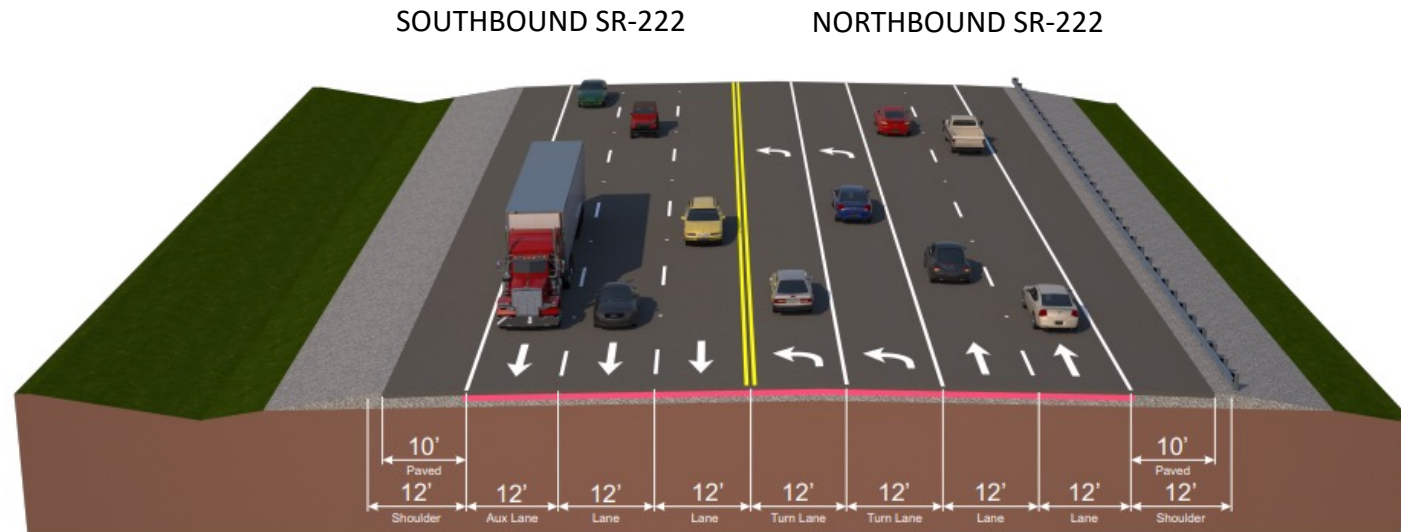
From the boundary of the MRM (Fredonia Rd.) to the intersection of SR-222, SR-468 would consist of four 12-foot travel lanes (two lanes in each direction) separated by a 12-foot two-way center turn lane.



State Route 468
from Fredonia Road to State Route 222

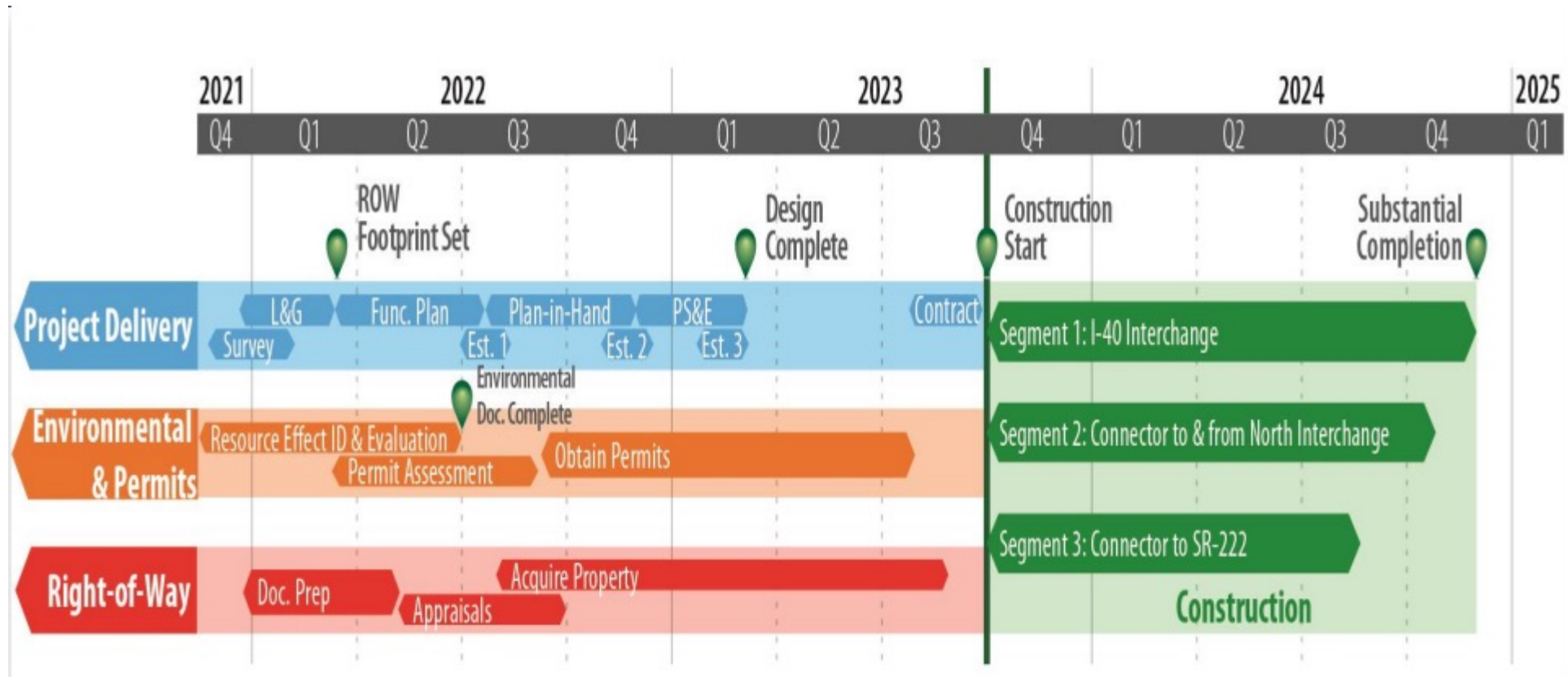
SR-222 Typical Section at Intersection of SR-468

At the intersection of the SR-468 and SR-222 a signalized intersection is proposed.



State Route 222
Widening at new State Route 468

G1 - Project Timeline



G1 Project Delivery Method – CMGC

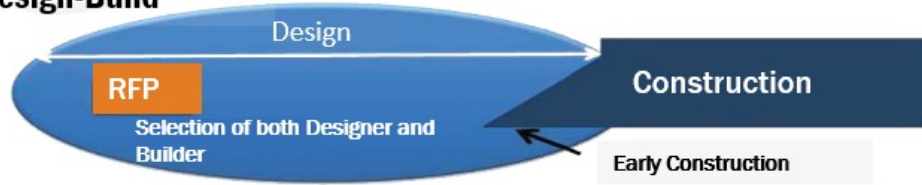
- TDOT wanted a “New Tool in the Tool Box”
- Enabling legislation in July 2014
- 3 pilot projects:
 - Project 1: TDOT Fast Fix 8 Accelerated Bridge Construction Project (Davidson County)
 - Project 2: TDOT I-240 MemFix4 (Shelby County)
 - Project 3: I-24 Bridges over South Germantown Road and Belvoir Avenue (Hamilton County)
- Time Frame – Pilot Program expired in July 2019
- Senate Transportation and Safety Committee Amendment No. 1 to SB0779
- Active CMGC Projects
 - CMGC4 Broadway Bridge (Davidson Co.)

Why CMGC Process for G1?

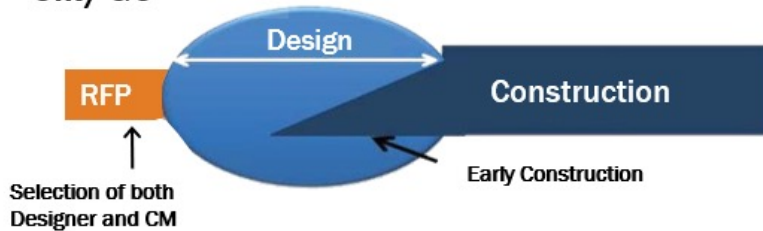
Traditional Design Bid Build



Design-Build



CM/GC



- Expedite complex project delivery
- Design based on contractor capabilities and DOT expectations
- Mutually agreed distribution of risk
- Provide the best product in the shortest timeframe at an agreed-upon price (one contractor, one price)
- Owner retains greater control of design vs. design-build
- Early involvement of third parties during design (utilities, railroad, cities, major stakeholders)
- Daily peer exchange

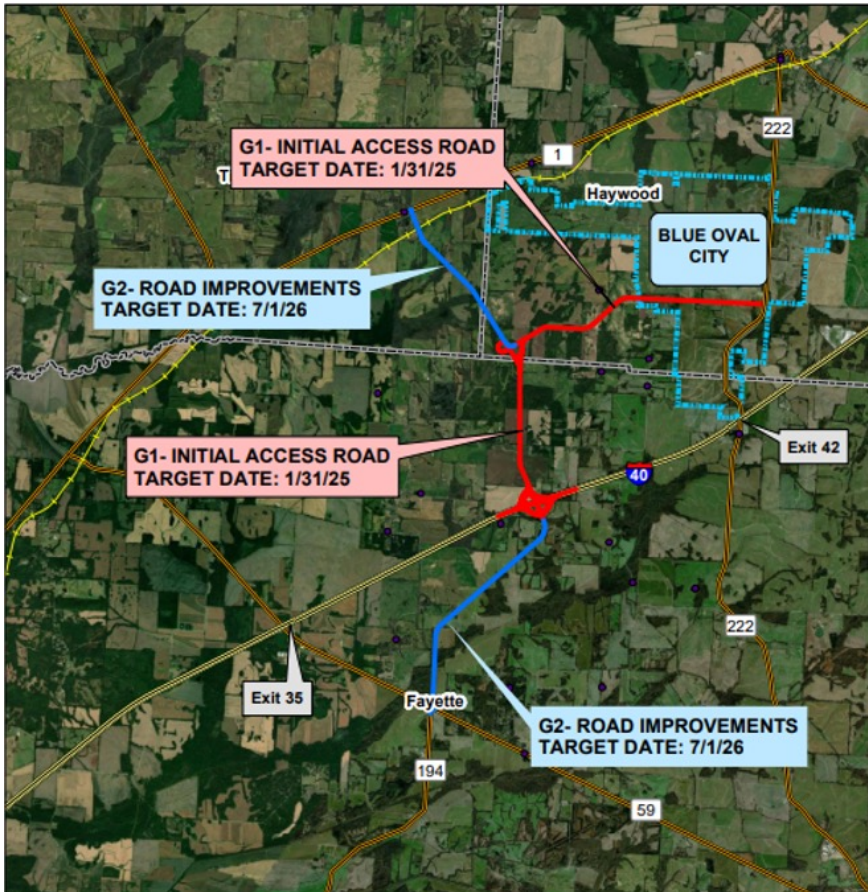
CMGCo5 – SR-194 Extension I-40 Exit 39

Construction Manager – Kiewit Infrastructure South Co.

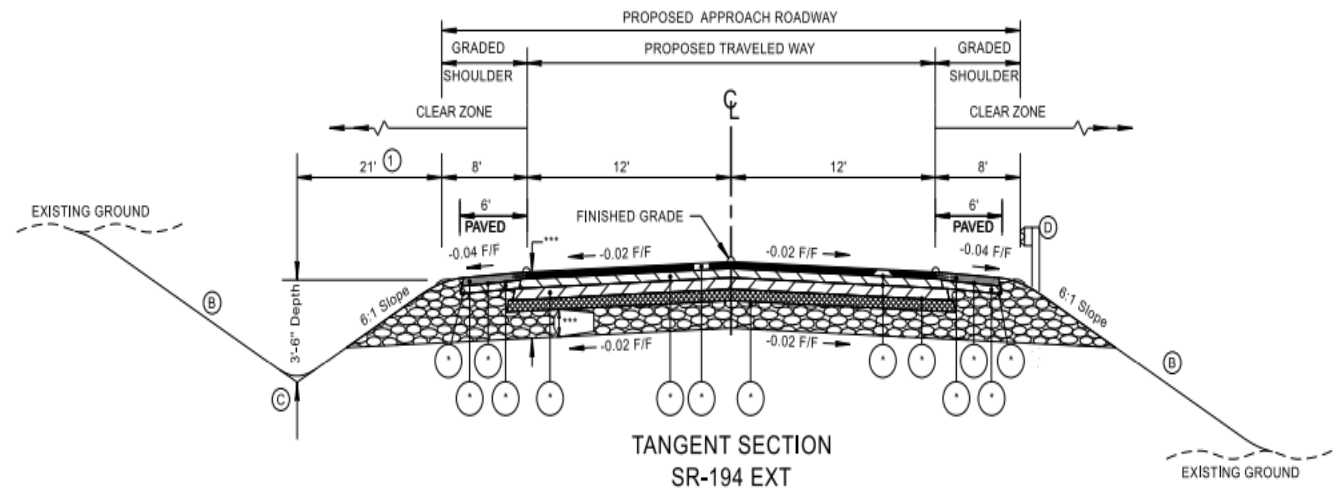
Independent Cost Estimator – Innovative Contracting and Engineering

Design Consultant – HDR

SR-194 G2 North and South – Typical Section



Delivery Method- Traditional Design-Bid-Build



SR-194 Ext. I-40 Exit 39 Project Recourses

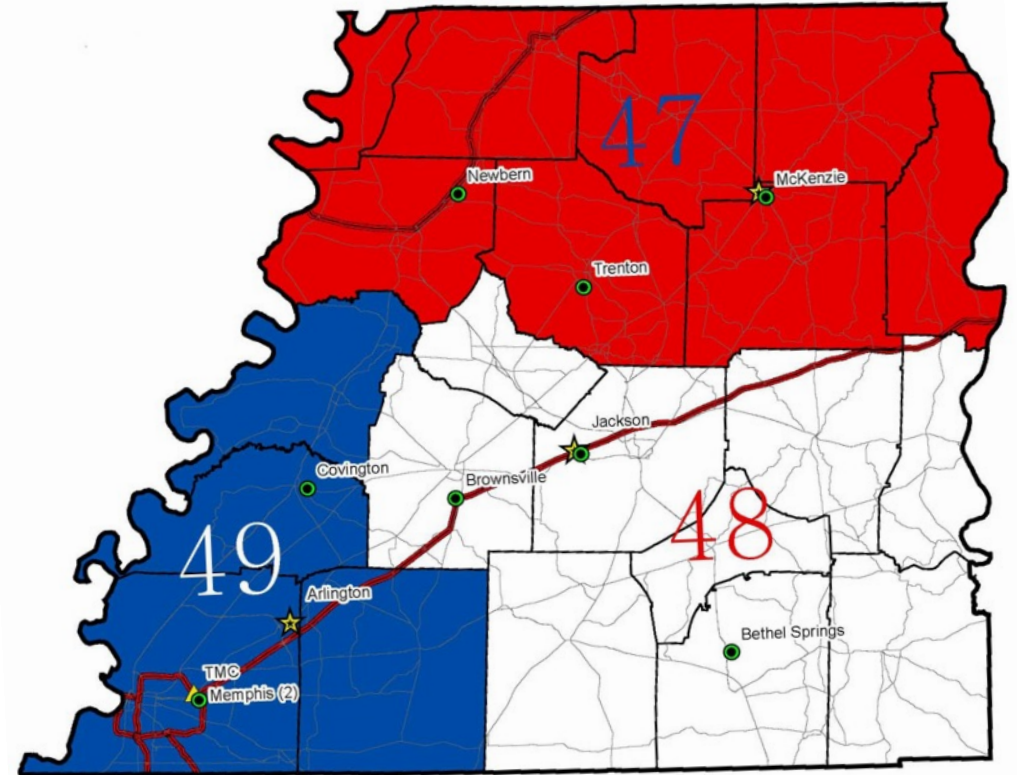
- **State Route 194 Extension / Exit 39 (tn.gov) - <https://www.tn.gov/tdot/projects/region-4/sr-194-extension-exit-39.html>**
- **Memphis Regional Megasite - Tennessee Department of Economic and Community Development (tneecd.com) - <https://tneecd.com/sites/memphis-megasite/>**
- **Blue Oval City Community Information (tn.gov) - <https://www.tn.gov/ecd/rural-development/blue-oval-city-resources.html>**



TDOT Region 4 Projects of Interest

Region 4 Map

- 21-County Area
- Bordered by the Tennessee and Mississippi Rivers
- 2 Metropolitan Planning Organization (MPO) Areas
- 3 Rural Planning Organization (RPO) Areas



TDOT Region 4 Projects of Interest

- TDOT iTRIP – Interactive Tennessee Road Improvement Program
- Projects in Region 4 - <https://www.tn.gov/tdot/projects/region-4.html>
- Follow MyTDOT or Nichole Lawrence on Social Media



TDOT Project Recourses - iTRIP

TDOT iTRIP Interactive Tennessee Road Improvement Program

Select Representative Name
No category selected
Select a Senator Name
No category selected

Filter Projects

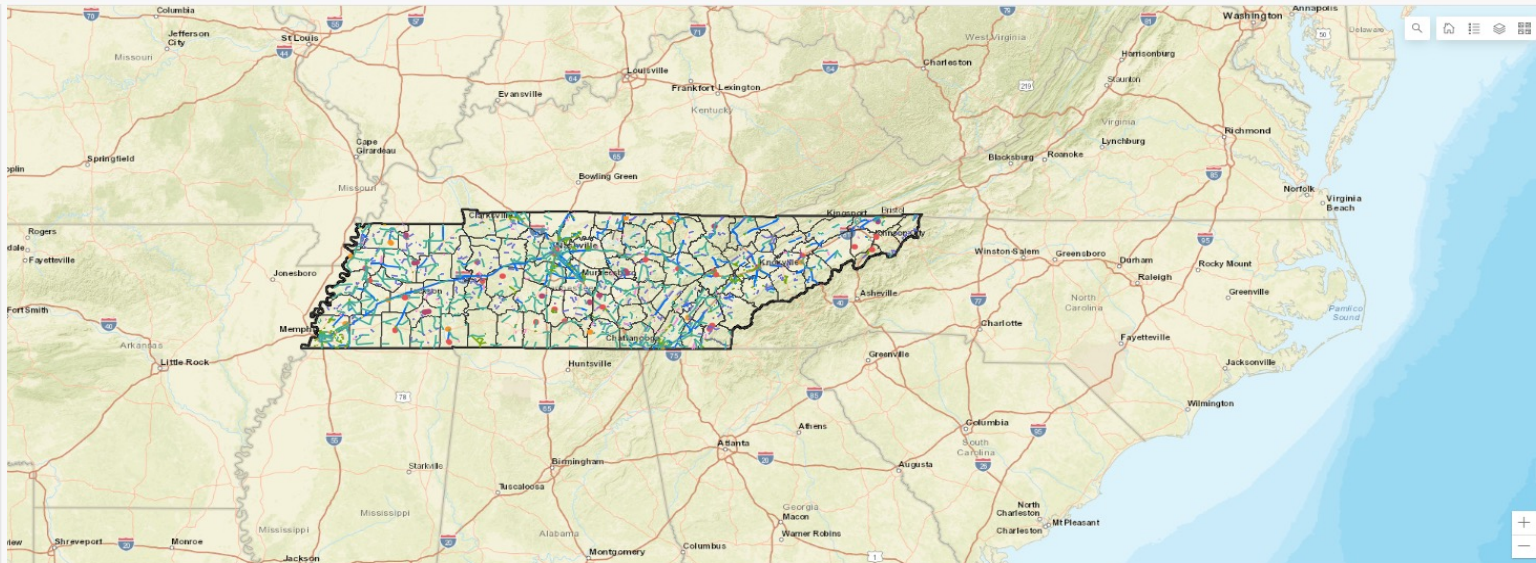
Select a Program Type
No category selected

Select a County
No category selected

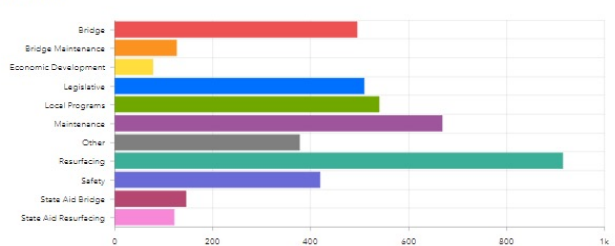
Select Region
No category selected

Select MPO
No category selected

Select RPO
No category selected



Program Type

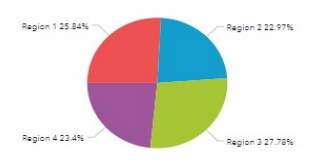


Program Type	Count
Bridge	500
Bridge Maintenance	150
Economic Development	100
Legislative	500
Local Programs	550
Maintenance	700
Other	400
Resurfacing	900
Safety	450
State Aid Bridge	150
State Aid Resurfacing	150

Total Selected Projects


4,388

Projects by Region



Region	Percentage
Region 1	25.84%
Region 2	22.97%
Region 3	27.78%
Region 4	23.41%

R4 Major Construction Projects

Go to TN.gov

[Traveler how do I...](#) [Business how do I...](#) [Government how do I...](#) [Find Local Information](#) [Sitemap](#) [Index of Services](#)


Region 4

- Interstate 40 Hernando DeSoto Bridge
- Interstate 40 Interchanges (Jackson)
- Interstate 55 / Crump Boulevard Interchange
- Interstate 69 Corridor
- Interstate 69 - Segment 7
- Interstate 69 - Segment 8
- Interstate 69 - Segment 9
- State Route 4 (US 78) Lamar Avenue
- State Route 18 from Bolivar to SR 100
- State Route 18 from SR 100 to SR 5
- State Route 76 (US 79)
- State Route 128
- State Route 186 (US 45 Bypass) Southern Extension
- State Route 194 Extension / Exit 39
- State Route 459 (US 412) Lexington Bypass
- State Route 460 (US 64) Somerville Beltway
- North Second Street Corridor Improvements
- Proposed Kirby-Whitten Parkway

Projects in Region 4

Projects located in *Region 4* are located in the menu labeled *Transportation Projects* to the left.

Transportation Projects



Counties that make up Region 4

Benton • Carroll • Chester • Crockett • Decatur • Dyer • Fayette • Gibson • Hardeman • Hardin • Haywood • Henderson • Henry • Lake • Lauderdale • Madison • McNairy • Obion • Shelby • Tipton • Weakley

R4 Major Construction Projects

- **Obion County I-69: This project includes the grading, drainage, construction of bridges and paving on future I-69 from West of S.R 21 to U.S 51 (S.R 3).**
 - The project length is 4.1 miles and includes the construction of six span bridges, 4 Single Barrel RCBC, 1.3 million cubic yards of road and drainage, 1.2 million cubic yards of borrow excavation, including base and surface layers of asphalt paving. Estimated Completion Date – Summer of 2023
- **Obion County I-69: This project will complete the base and paving for two completed segments of I-69 and connect to the active project above.**
 - Estimated Completion Date – Summer of 2023 Once completed, this will be the first segment to open to traffic traveling on the I-69 corridor in Obion County.
- **Obion County: I-69 From South of SR-21 (Troy-Rives Road) to South of US-51**
 - Tentative Letting in 2025

Dates Subject to Change

R4 Major Development Projects

- **Shelby County I-40: From SR-177 (Germantown Road) to 1.0-mile East of Canada Road (IA)**
 - Widening
- **Shelby County I-40: From 1.0-mile East of Canada Road to SR-205 (Collierville-Arlington Road) (IA)**
 - Widening
- **Shelby County I-40: From Levee Road Overhead to Hollywood Street Overhead**
 - Concrete rehab project. Letting date not yet determined.
- **Shelby County SR-14: (Austin Peay Hwy.) From East of Kerrville-Rosemark Road to Tipton County Line (IA)**
 - Widening from 2 lanes to 4 lanes. Tentative Letting 2023.
- **Lauderdale County SR-19: From East of Eastland Avenue to Haywood County Line (***) (IA)**
- **Tipton SR-14: From North of SR-384 to SR-59 (IA)**
 - Widening from 2 lanes to 4 lanes.
- **Intelligent Transportation System (ITS)**
 - From the Shelby/Fayette County Line to Near I-840 in Dickson County.

Dates Subject to Change

R4 Major Development Projects

- **Benton Co: SR 1 (US 70) Camden By-Pass to Tennessee River**
 - 4.1 miles of widening from 2 lanes to 5 lanes
 - Tentative Letting in 2023 (contingent upon TVA agreements)
- **Carroll County: (Broad St. S.) From East of SR-77 to West of Cutlip Lane**
 - Widening from 2 lanes to 4 lanes on new alignment
 - Tentative Letting in 2024
- **Benton, Decatur County: I-40 From West of SR-69 in Decatur Co to SR-191 in Benton Co**
 - Early in Design phase

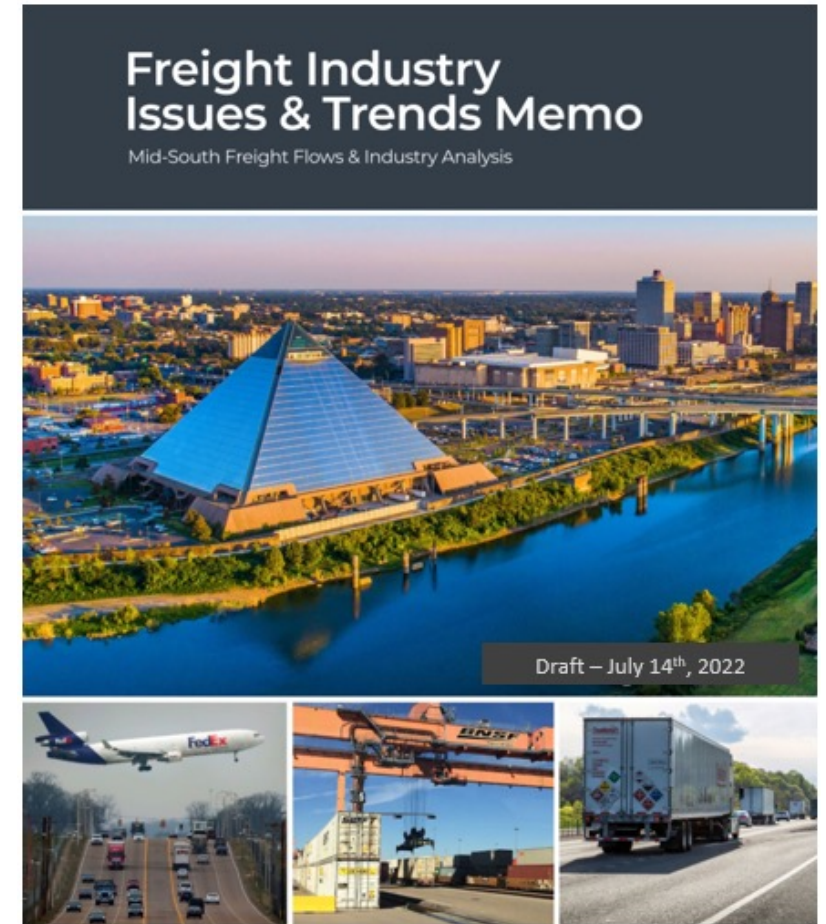
Dates Subject to Change

TDOT – Various Studies

- **Freight Industry Issues & Trends Memo**
 - Mid-South Freight Flows & Industry Analysis
- **Transit Study**
 - Study to assess the feasibility of various transit options from Memphis, Tennessee to the future Ford Blue Oval facility in Haywood County, Tennessee, and eventually connecting to Jackson, Tennessee.
- **Office of Community Transportation (OCT)**
 - OCT's mission is to coordinate the state's transportation planning, local land use decisions, and community visions to guide the development of a safe and efficient statewide transportation system.

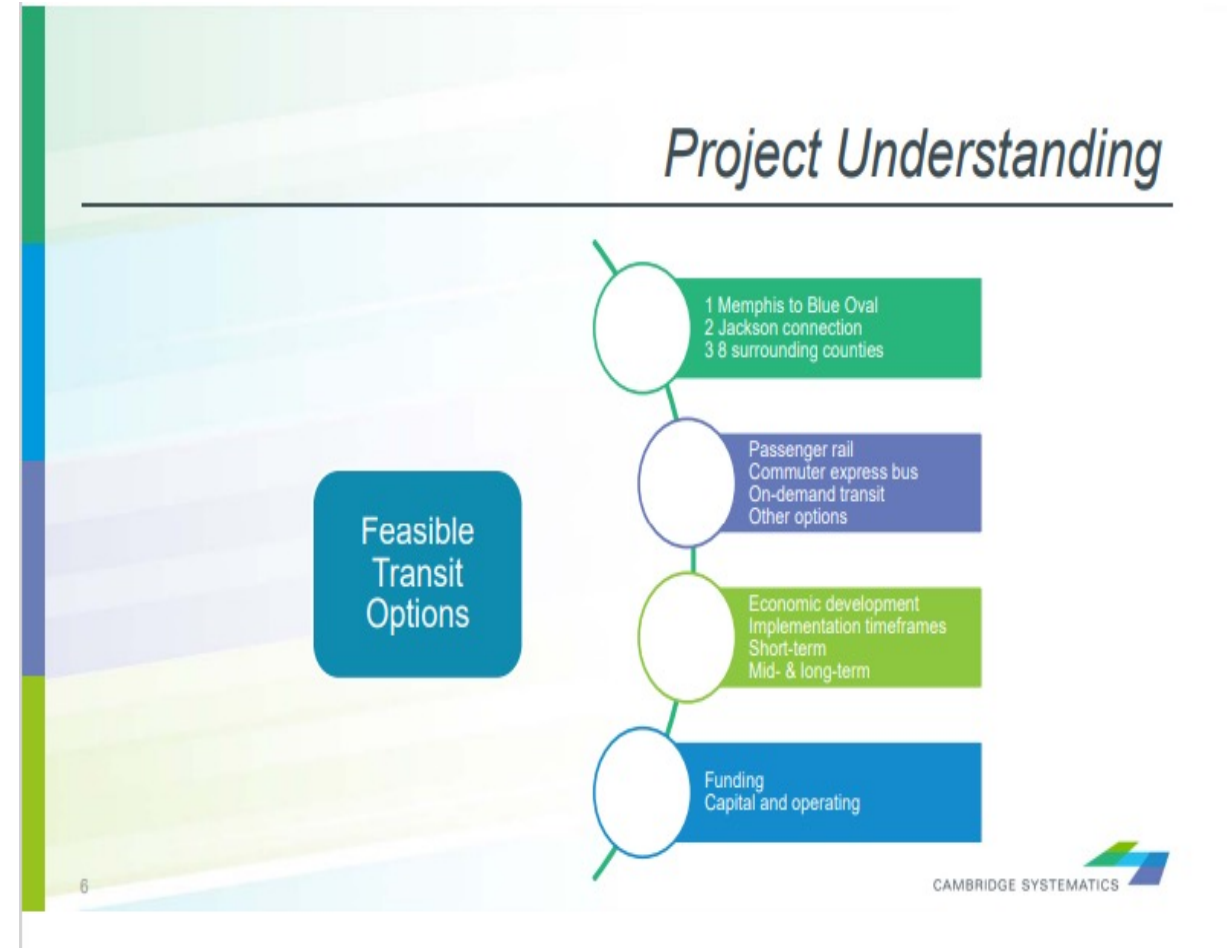
Freight Industry Issues & Trends Memo

- **MULTIMODAL TRENDS AND ISSUES**
 - E-Commerce, COVID-19 Pandemic & Distributed Manufacturing
- **TRUCKING TRENDS AND ISSUES**
 - Congestion, Safety, Pavements and Structures, Parking, Electrification, Vehicle Automation, & Driver Shortage
- **RAIL TRENDS AND ISSUES**
 - Network Bottlenecks/Intermodal Accessibility, Precision Scheduled Railroading, Intermodal Network Restructuring, Technology, Bridges and Structures, At-Grade Crossings, & Rail and Economic Development
- **WATER TRENDS AND ISSUES**
 - Multimodal Access, Condition of Facilities and Assets, Industrial Land Development, Container-on-Barge Growth Opportunities, & Industry Growth Opportunities
- **AIR CARGO TRENDS AND ISSUES**
 - Parcel Industry Developments & Accessibility
- **WAREHOUSING AND DISTRIBUTION TRENDS AND ISSUES**
 - Growth, Diversification, & Automation and Multi-Story Technologies
- **PIPELINE TRENDS AND ISSUES**



Transit Study

- The study will address providing any form of transit alternatives from the following counties to and from the Haywood County facility: Shelby, Fayette, Hardeman, Chester, Madison, Haywood, Tipton, Lauderdale, Dyer, Crockett, Gibson, and Madison



TDOT

QUESTIONS?