

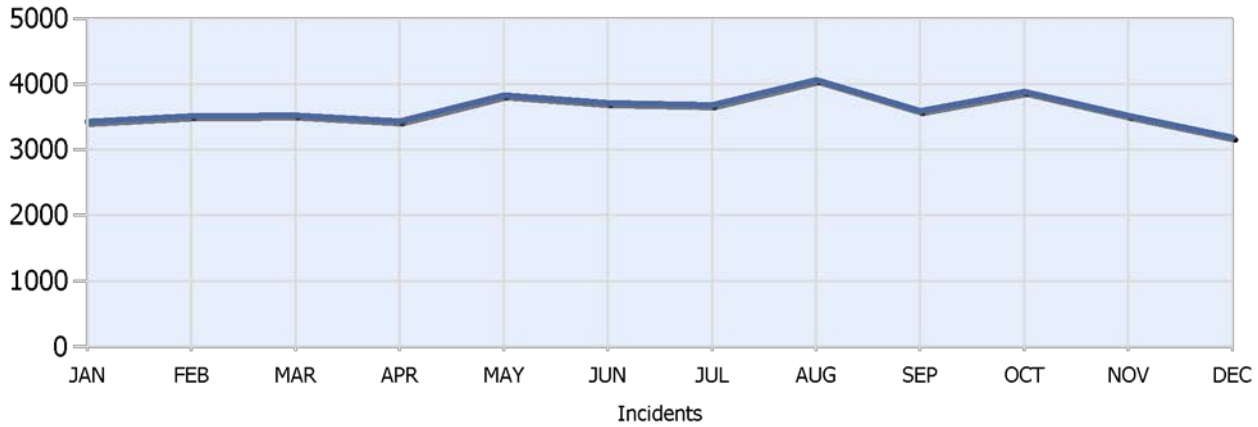


Quarter 4, 2018

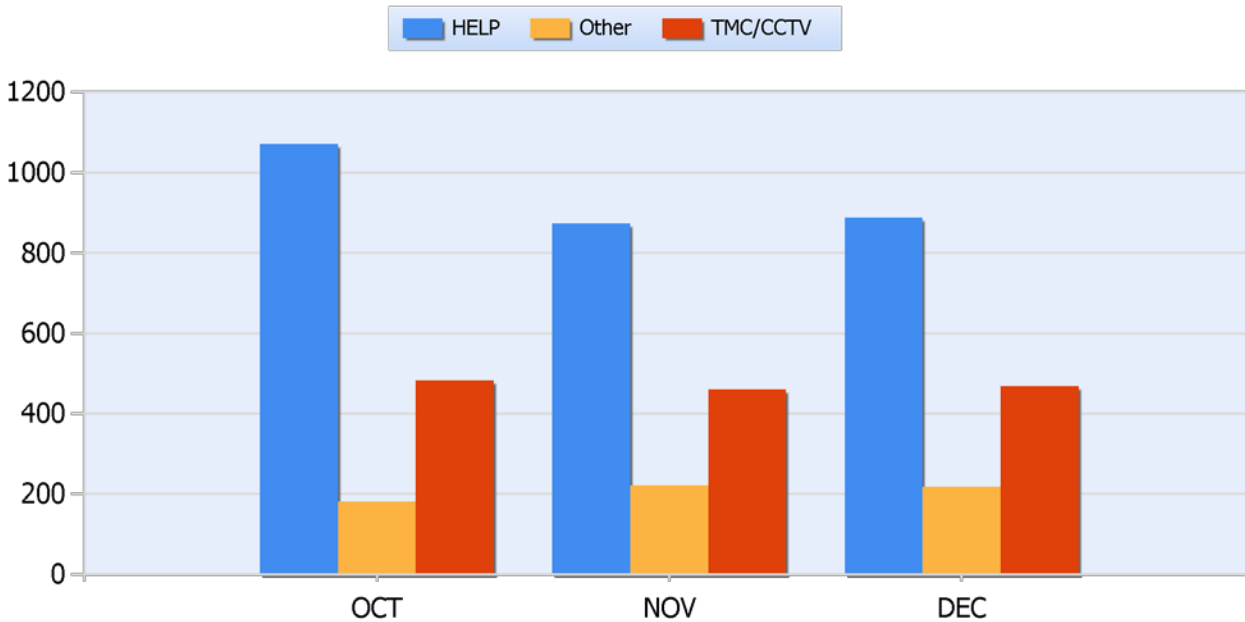
Total Incidents Managed This Quarter: 10601

## Incidents Managed YTD

Total Incidents Managed YTD - 43417



## Incidents By Detection Source

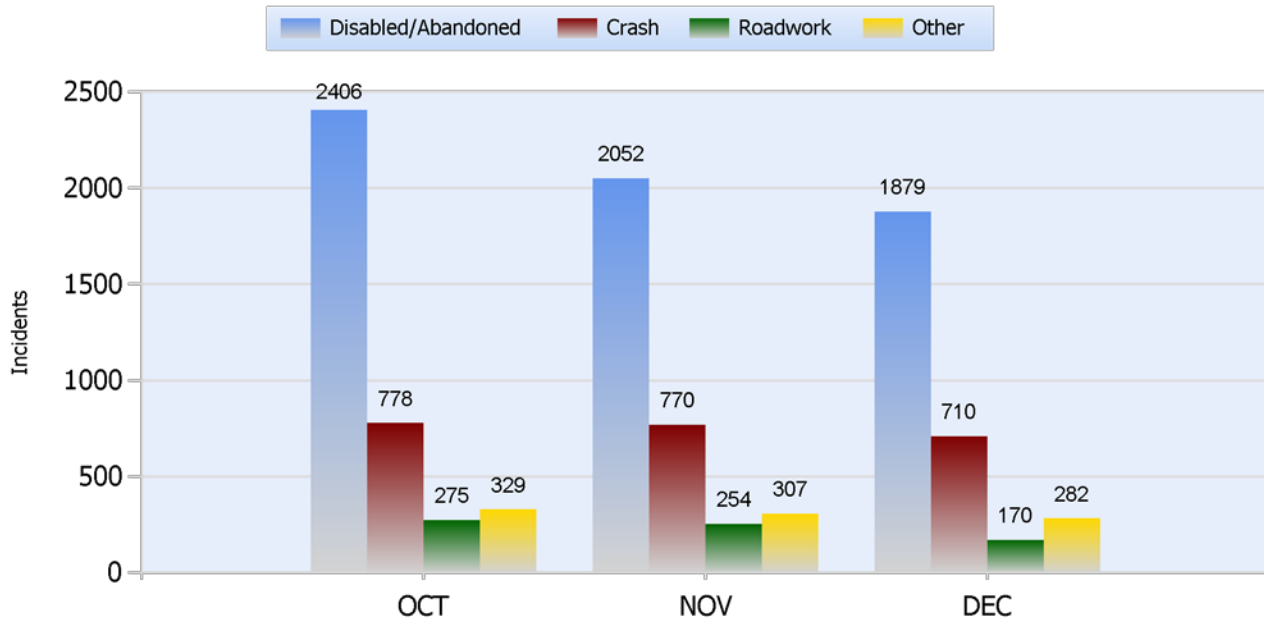




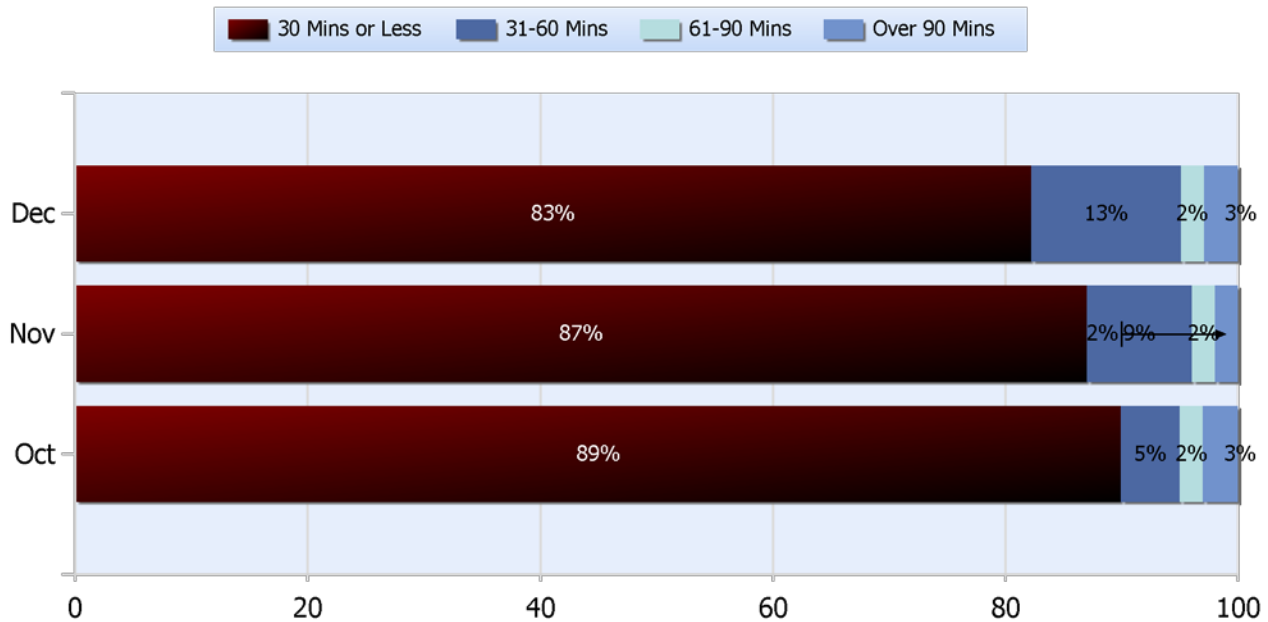
Quarter 4, 2018

Total Incidents Managed This Quarter: 10601

## Total Roadway Incidents



## Lane Blockage Clearance Times Overall

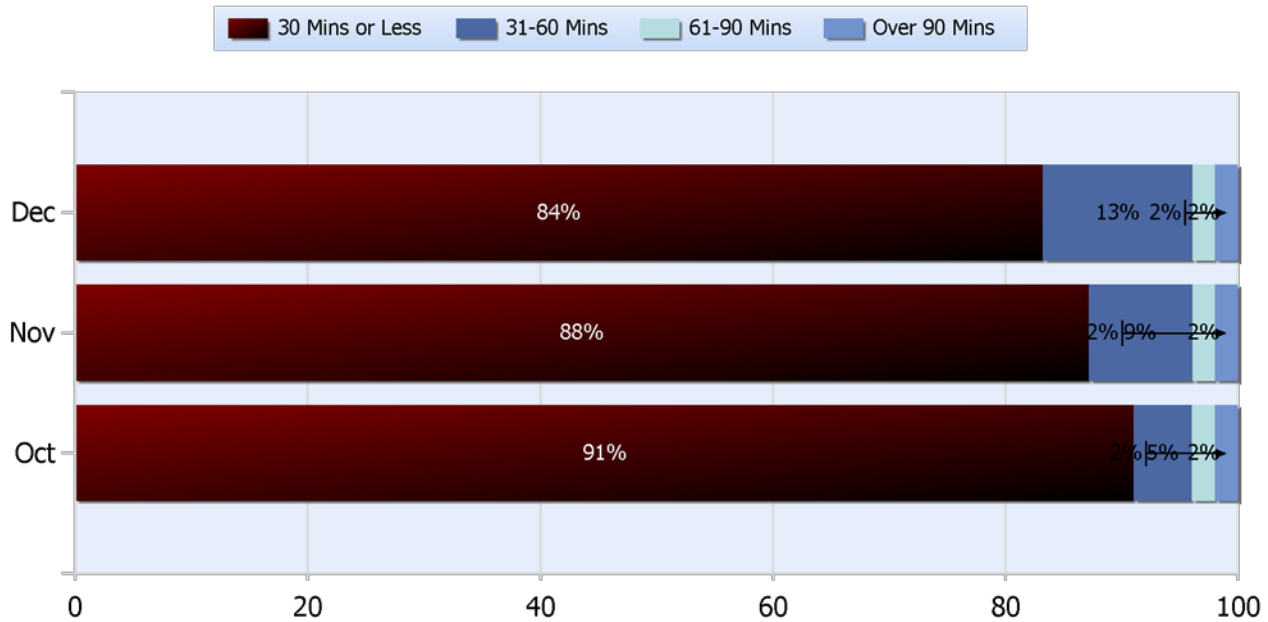




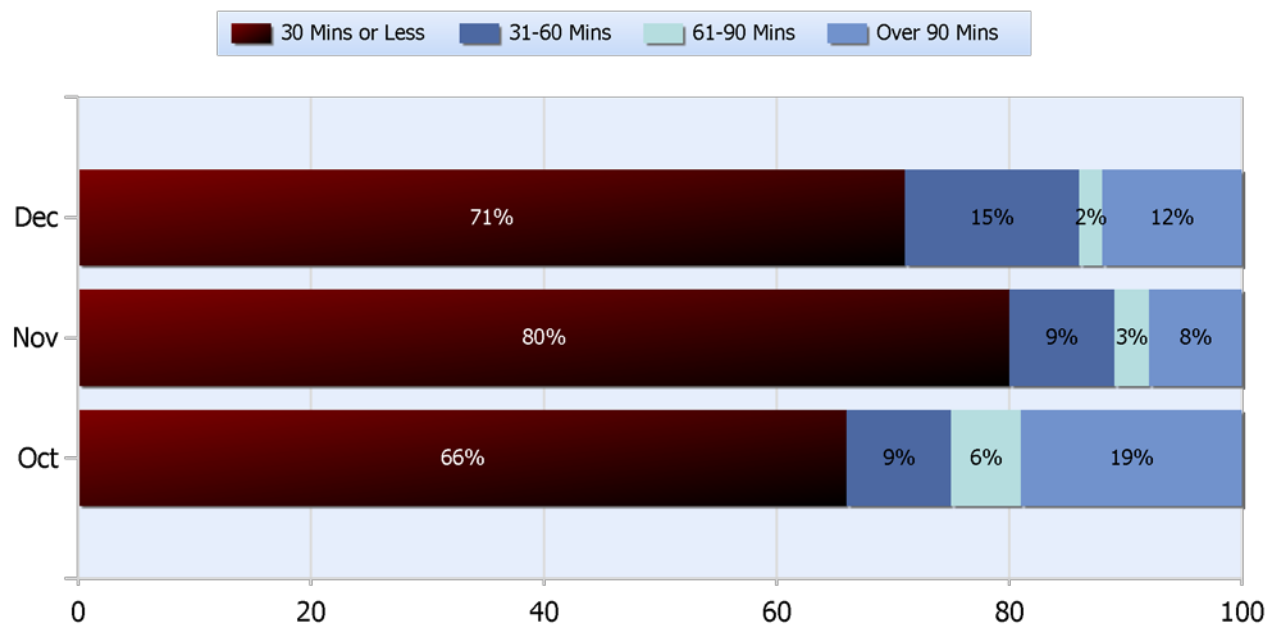
Quarter 4, 2018

Total Incidents Managed This Quarter: 10601

## Lane Blockage Clearance Times Urban



## Lane Blockage Clearance Times Rural

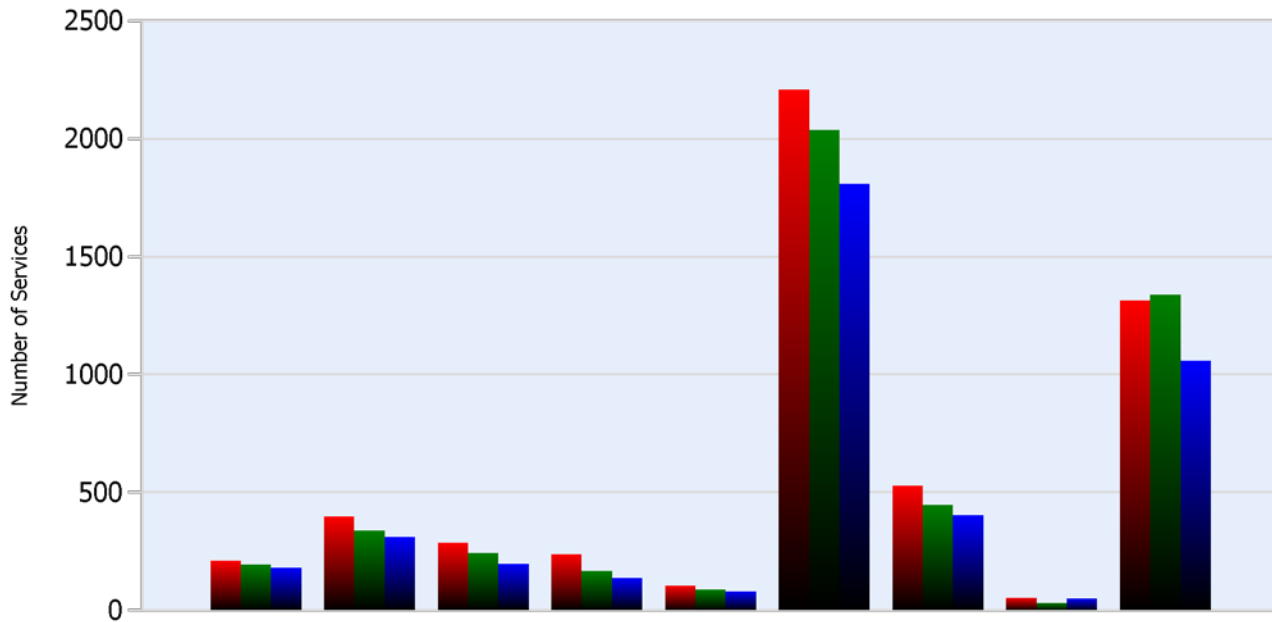




Quarter 4, 2018

Total Incidents Managed This Quarter: 10601

## HELP Services Provided



Month	Debris	Tire	Fuel	Mech	Jump	Traffic Ctrl	Tag	No Service	Other
<b>OCT</b>	210	397	286	237	104	2207	529	52	1315
<b>NOV</b>	193	337	243	166	88	2037	446	32	1337
<b>DEC</b>	180	311	198	138	79	1808	404	49	1059

## DMS Usage

	Oct	Nov	Dec	Quarter
Average % ON Time	37.7	76.9	33.8	49.2
Average Post Time	4.8	4.5	5.6	4.9
Avg Messages Per Sign	89.8	93.5	77.6	87
Total Messages Posted	7093	7383	6130	20606



Quarter 4, 2018

Total Incidents Managed This Quarter: 10601

## Events Affecting Traffic This Quarter:

- October 6, 2018 Inc #311976 – 15:43-20:39, 24e at mile marker 57.4 was reduced to one lane traffic due to a crash involving a fatality.
- October 14, 2018 Inc #313033 – 11:51-18:02, 65n at mile marker 60.4 two right lanes were blocked due to a multi vehicle crash.
- November 5, 2018 Inc #315634 – 00:42-10:31, 40w at mile marker 186 the interstate was closed due to a multivehicle crash involving two tractor trailers.
- November 16, 2018 Inc #317029 – 00:13-12:18, 40w at mile marker 148 the interstate was closed due to a commercial vehicle fire.
- November 30 – December 1, 2018 Inc #318831 – 19:19-02:22 40e at mile marker 201 the interstate was closed due to a fatal crash involving an EMS unit.
- December 27, 2018 Inc #321775 – 19:36-23:05 40w at mile marker 152 the interstate was closed due to a crash involving a crossover and two commercial vehicles with critical injuries.

## Travel Lane Blockage Events:

Roadway	Incident Count	Incident %
<b>I-24</b>	669	31.7
<b>I-40</b>	642	30.4
<b>I-440</b>	110	5.2
<b>I-65</b>	542	25.7
<b>SR155</b>	141	6.7
<b>SR6</b>	9	0.4