

Includes All Responders

Reporting Period: October 1, 2020 to December 31, 2020

Region 2

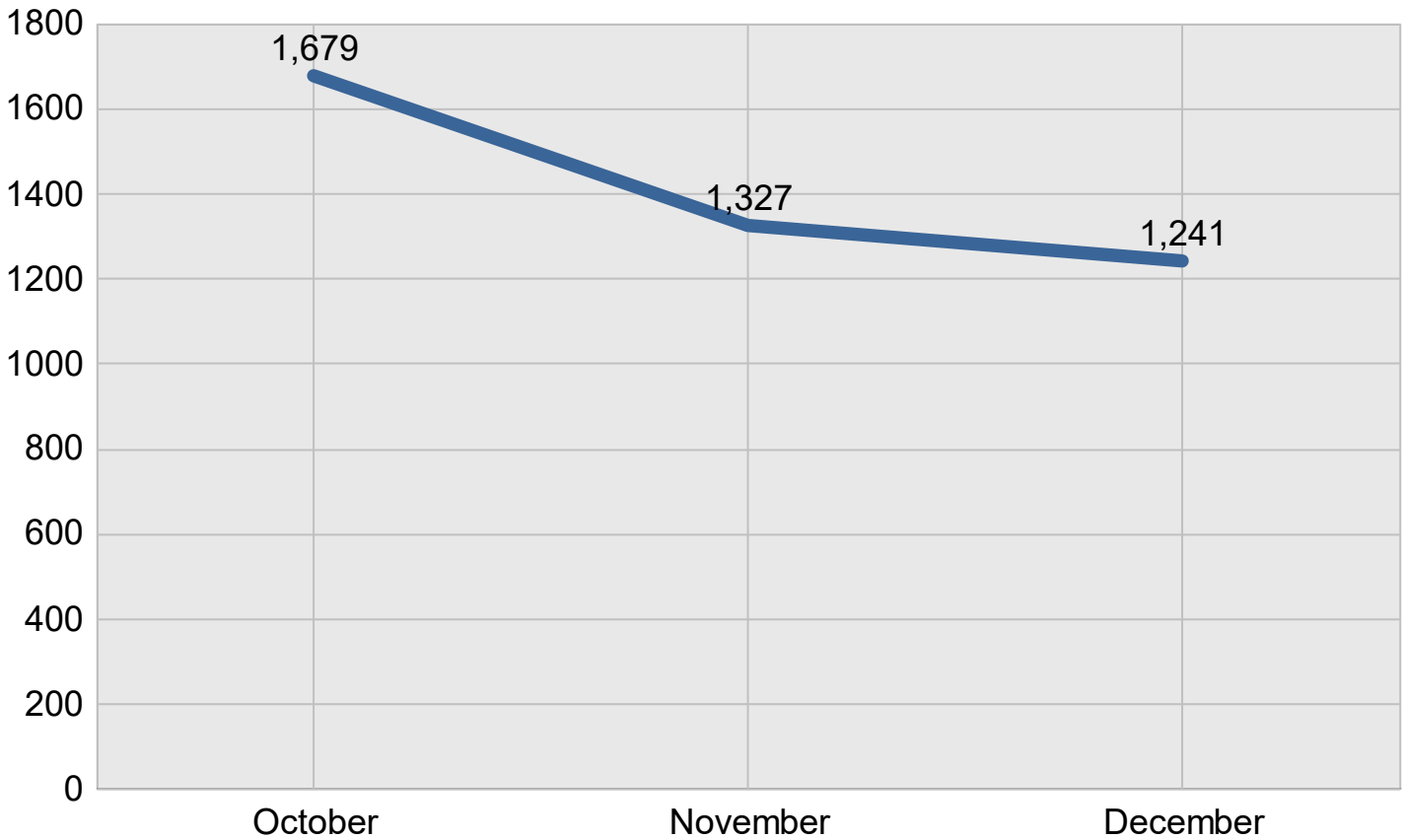
Created on: March 28, 2022 3:24 pm County: All Counties

Report Template version 2.0

Total Incidents Managed This Quarter: 4,247

Incidents Managed

Incidents Managed - Monthly

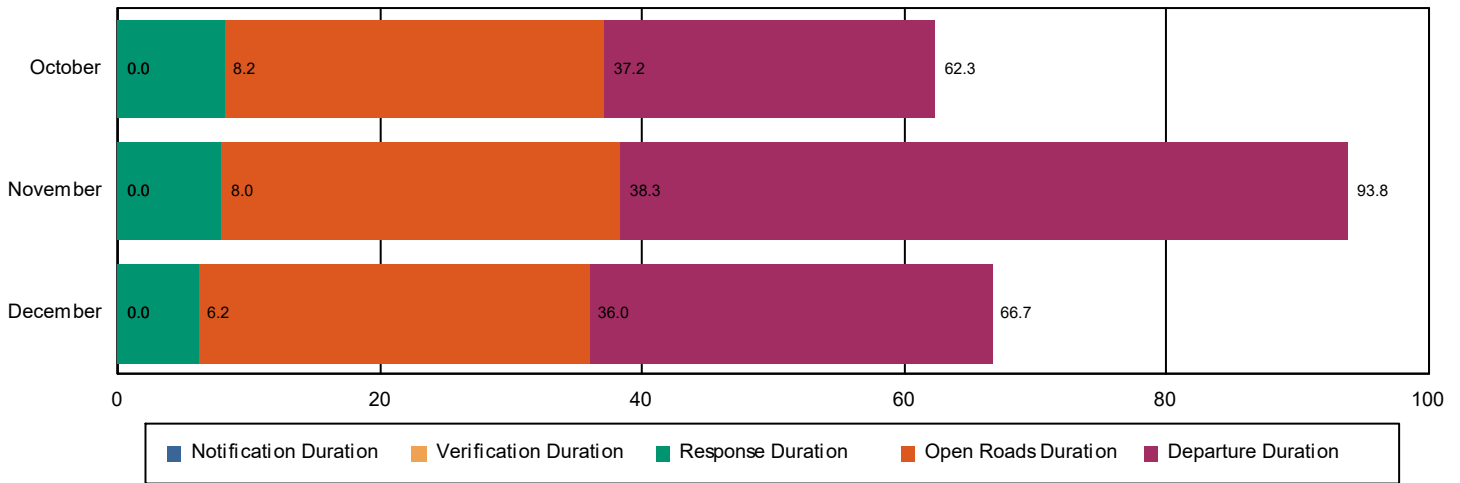


Performance Measures Summary

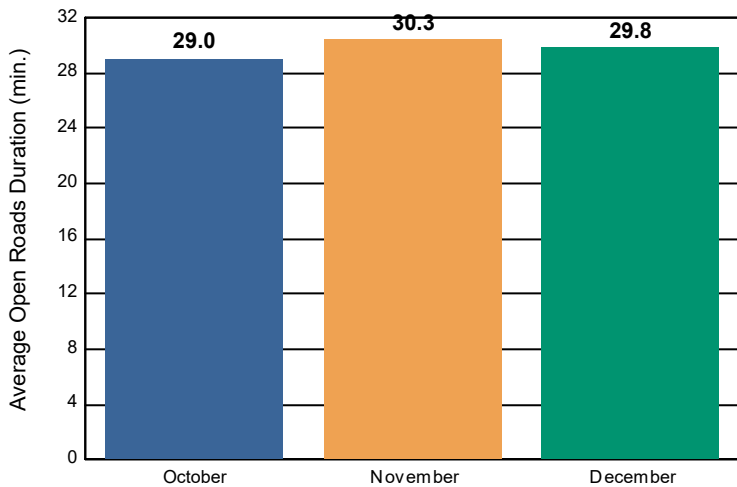
Incidents Overall Response

	October	November	December	Total
Events included in Performance Measures	340	275	243	858
Notification Duration (min.)*	0.0	0.0	0.0	0.0
Verification Duration (min.)	0.0	0.0	0.0	0.0
Response Duration (min.) [First Notification to First Arrival]	8.2	7.9	6.2	7.6
Open Roads Duration (min.) [First Arrival to Travel Lanes Cleared]	29.0	30.3	29.8	29.7
Departure Duration (min.) [Travel Lanes Cleared to Last Departure]	25.2	55.5	30.7	37.4
Roadway Clearance Duration (min.) [First Notif to Travel Lanes Cleared]	37.2	38.3	36.0	37.3
	62.3	93.8	66.7	74.6

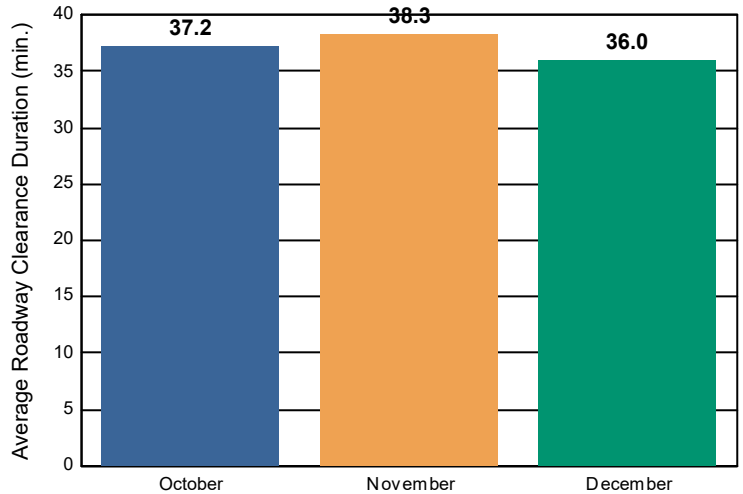
Incident Clearance Duration



Open Roads Duration / Month



Roadway Clearance Duration / Month

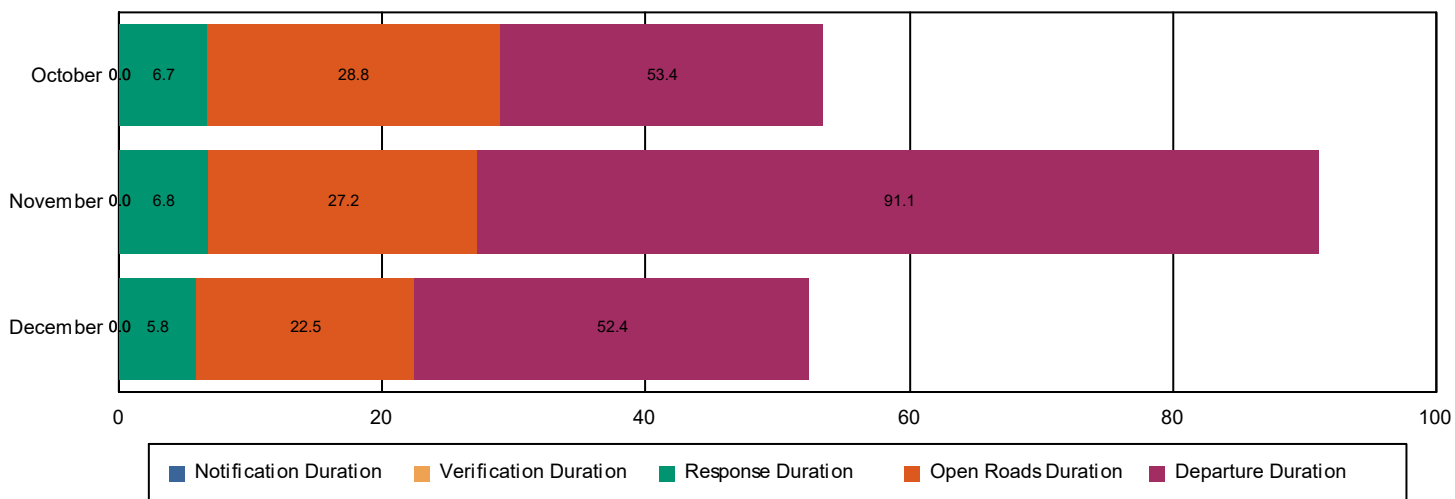


Performance Measures Summary

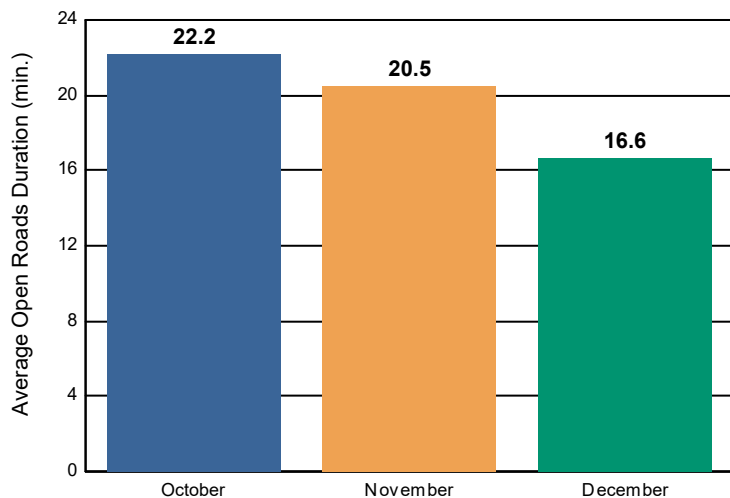
Incidents with HELP Truck Response

	October	November	December	Total
Events included in Performance Measures	228	180	160	568
Notification Duration (min.)	0.0	0.0	0.0	0.0
Verification Duration (min.)	0.0	0.0	0.0	0.0
Response Duration (min.) [First Notification to First Arrival]	6.7	6.8	5.8	6.5
Open Roads Duration (min.) [First Arrival to Travel Lanes Cleared]	22.2	20.5	16.6	20.1
Departure Duration (min.) [Travel Lanes Cleared to Last Departure]	24.6	63.9	29.9	38.6
Roadway Clearance Duration (min.) [First Notif to Travel Lanes Cleared]	28.8	27.2	22.5	26.6
	53.4	91.1	52.4	65.3

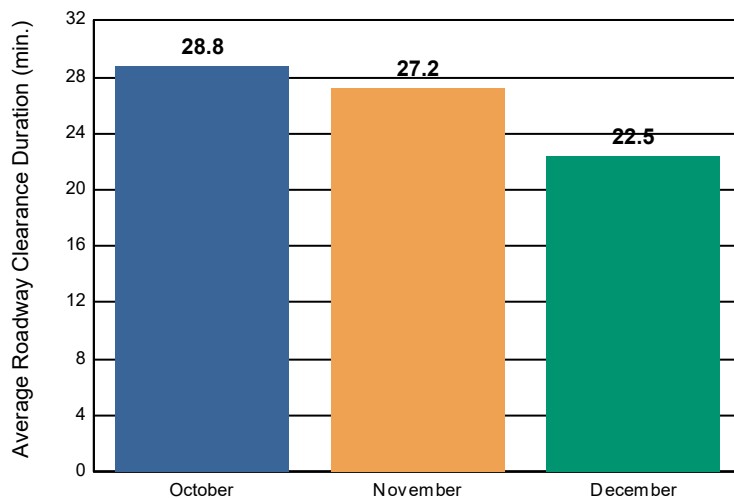
Incident Clearance Duration



Open Roads Duration / Month



Roadway Clearance Duration / Month

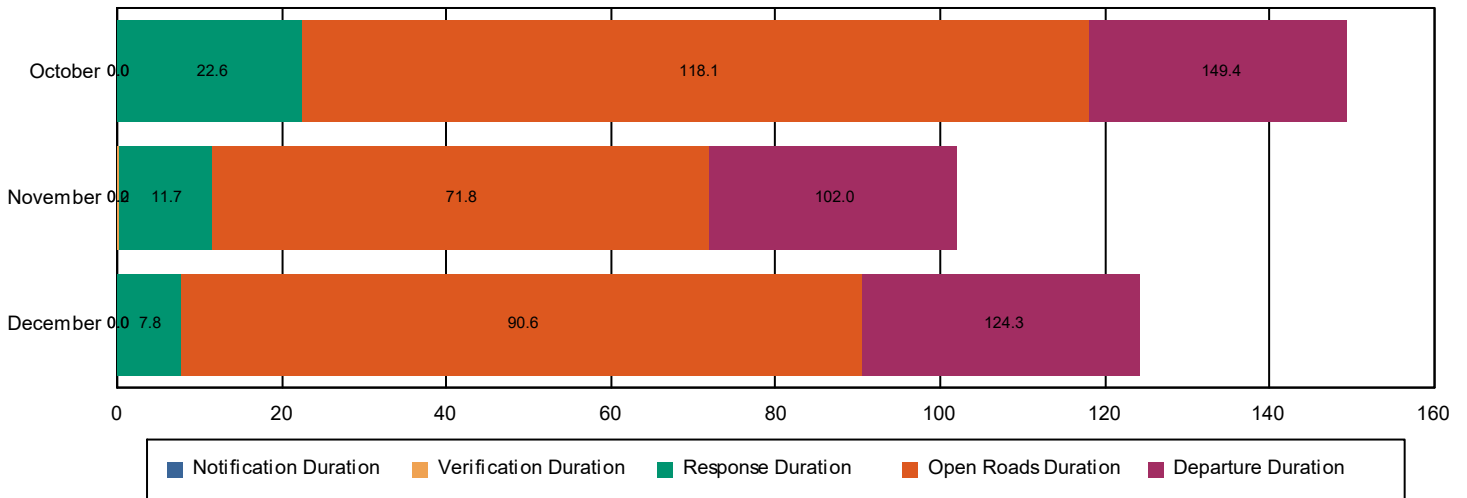


Performance Measures Summary

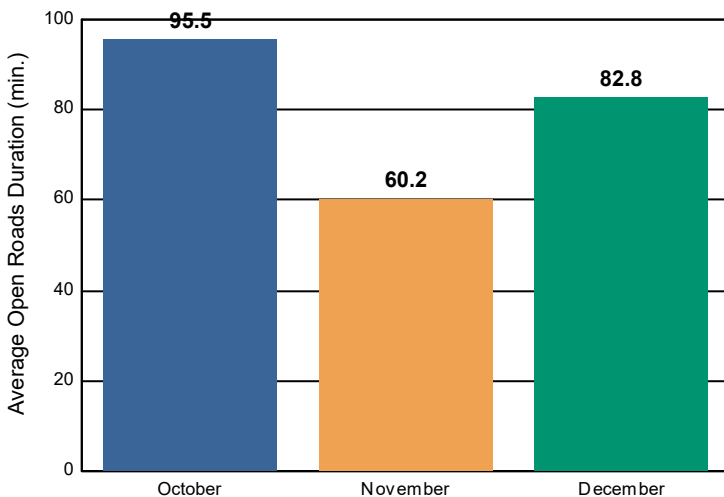
Incidents without HELP Truck Response

	October	November	December	Total
Events included in Performance Measures	112	95	83	290
Notification Duration (min.)	0.0	0.0	0.0	0.0
Verification Duration (min.)	0.0	0.2	0.0	0.1
Response Duration (min.) [First Notification to First Arrival]	22.6	11.5	7.8	12.5
Open Roads Duration (min.) [First Arrival to Travel Lanes Cleared]	95.5	60.2	82.8	74.1
Departure Duration (min.) [Travel Lanes Cleared to Last Departure]	31.3	30.1	33.7	31.5
Roadway Clearance Duration (min.) [First Notif to Travel Lanes Cleared]	118.1	71.8	90.6	86.7
	149.4	102.0	124.3	118.2

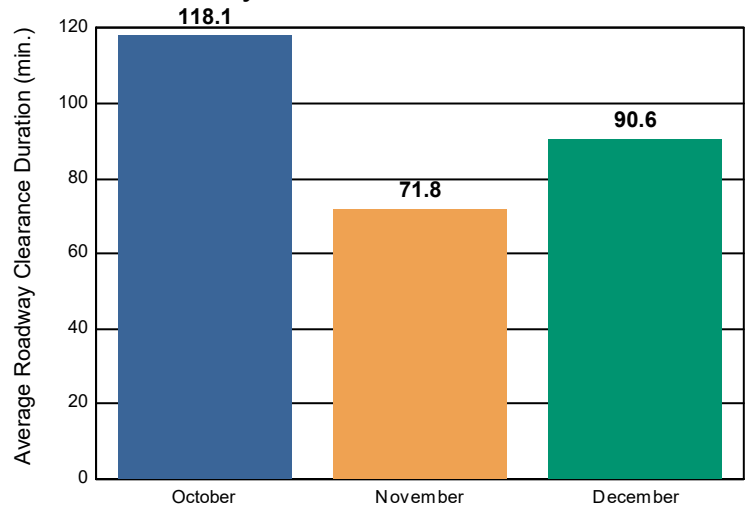
Incident Clearance Duration



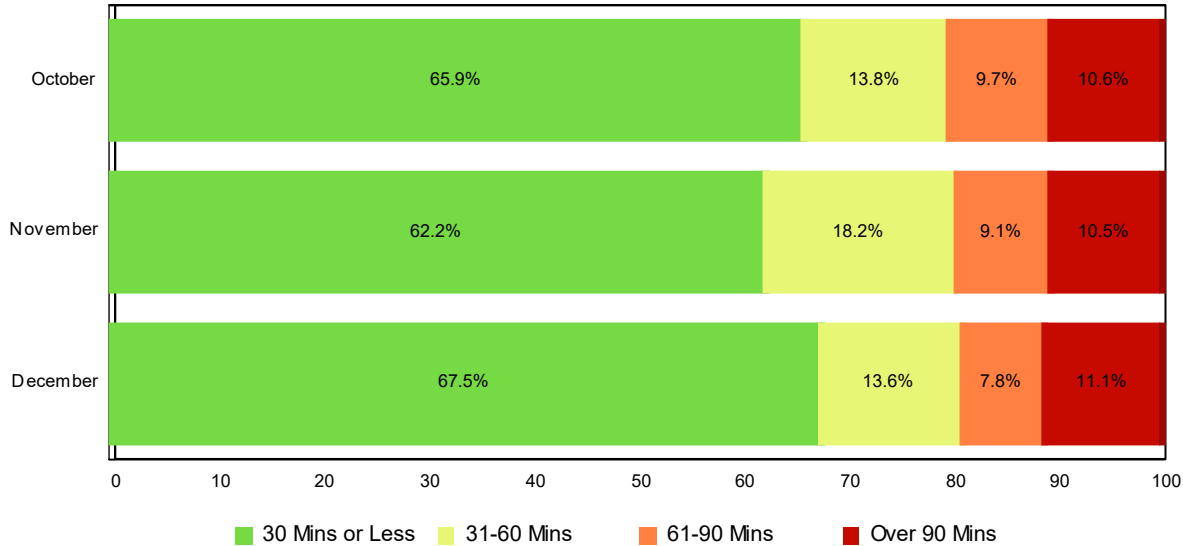
Open Roads Duration / Month



Roadway Clearance Duration / Month

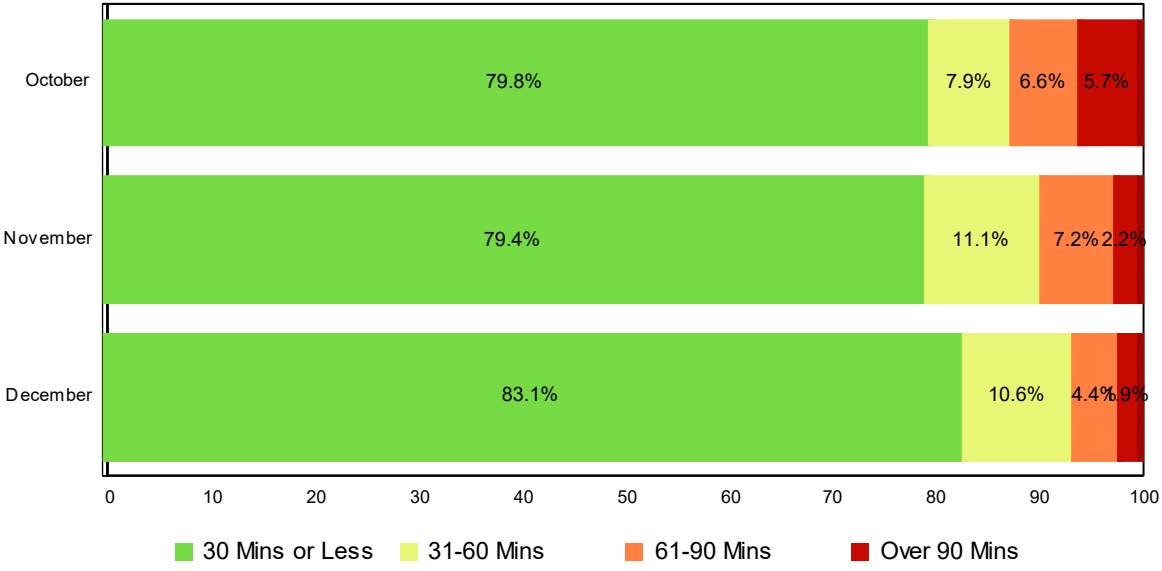


Lane Blockage Clearance Times - Overall



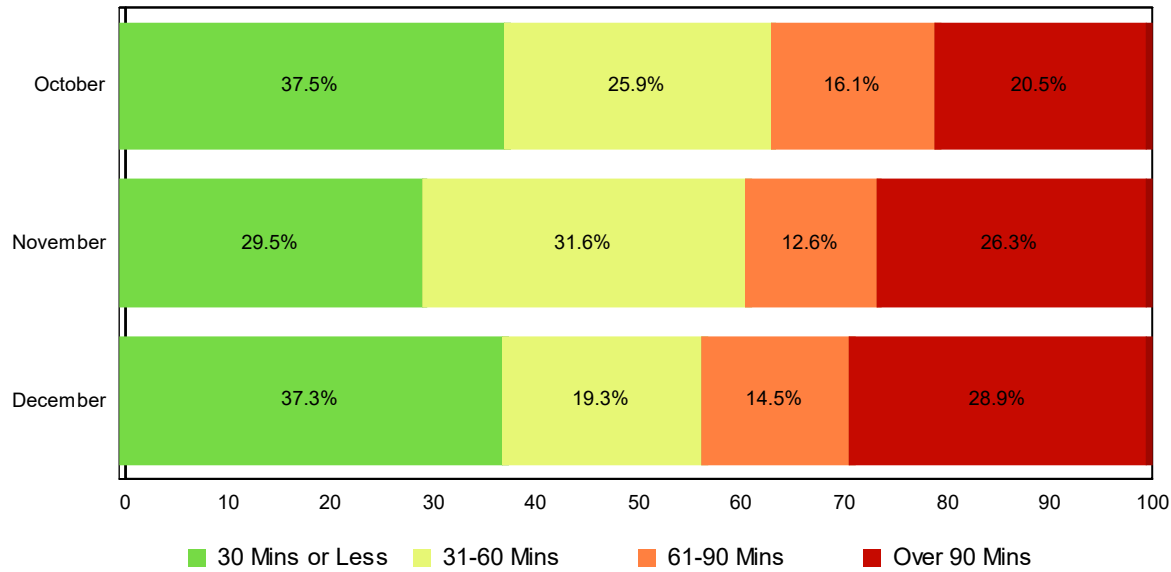
Month	30 Mins or Less	31-60 Mins	61-90 Mins	Over 90 Mins	Total # of Events
October	224	47	33	36	340
November	171	50	25	29	275
December	164	33	19	27	243
Total # of Events	559	130	77	92	858

Lane Blockage Clearance Times - with HELP Truck Response



Month	30 Mins or Less	31-60 Mins	61-90 Mins	Over 90 Mins	Total # of Events
October	182	18	15	13	228
November	143	20	13	4	180
December	133	17	7	3	160
Total # of Events	458	55	35	20	568

Lane Blockage Clearance Times - without HELP Truck Response



Month	30 Mins or Less	31-60 Mins	61-90 Mins	Over 90 Mins	Total # of Events
October	42	29	18	23	112
November	28	30	12	25	95
December	31	16	12	24	83
Total # of Events	101	75	42	72	290

All Incidents with Travel Lane Blockage and HELP Truck Response

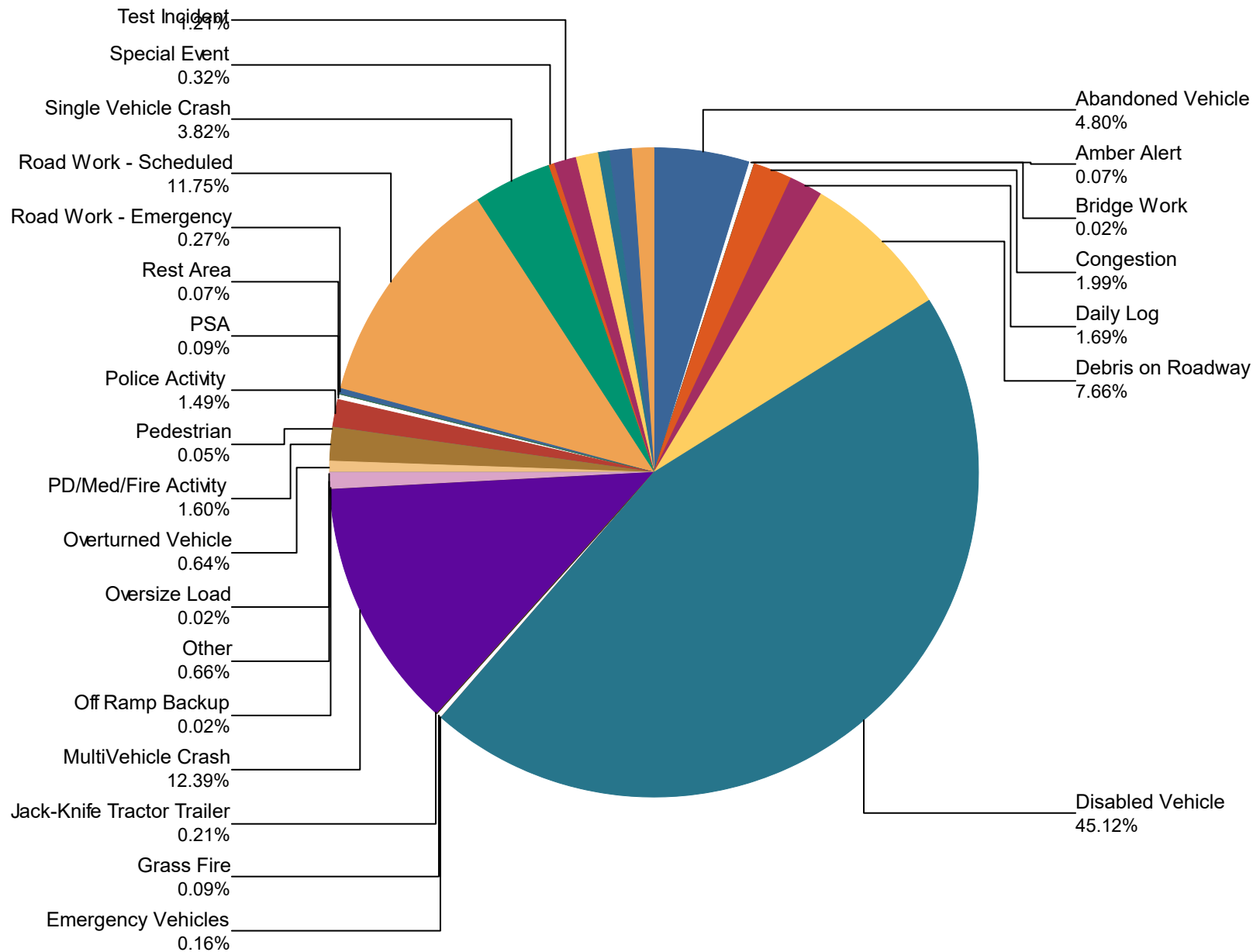
No. of Lanes Blocked	%	Count	%	Count	%	Count	%	Count	Avg Clear Time (Min)
1	85	364	94	401	98	419	2	8	19
2	72	81	85	95	94	105	6	7	38
3	37	7	53	10	84	16	16	3	76
4	60	6	70	7	80	8	20	2	61
Totals	81	458	90	513	96	548	4	20	25
<=30 Mins		<=60 Mins		<=90 Mins		>90 Mins			

Travel Lane Blockage Events- Roadway

Roadway	Lane Blockage Events Count	All Incidents	% of Incidents with Lane Blockage
		64	
I0024	282	1,054	26.8
I0040	36	57	63.2
I0075	291	1,603	18.2
I0124	5	11	45.5
Region 2 TMC	0	66	0.0
SR001	5	5	100.0
SR002	1	3	33.3
SR008	4	5	80.0
SR015	1	1	100.0
SR017	0	1	0.0
SR024	2	2	100.0
SR026	1	1	100.0
SR027	2	3	66.7
SR028	4	4	100.0
SR029	67	268	25.0
SR030	6	9	66.7
SR040	2	3	66.7
SR050	1	1	100.0
SR053	2	2	100.0
SR056	0	1	0.0
SR058	1	3	33.3
SR060	1	1	100.0
SR068	6	7	85.7
SR074	2	3	66.7
SR083	1	1	100.0
SR085	1	1	100.0
SR096	1	1	100.0
SR108	1	2	50.0

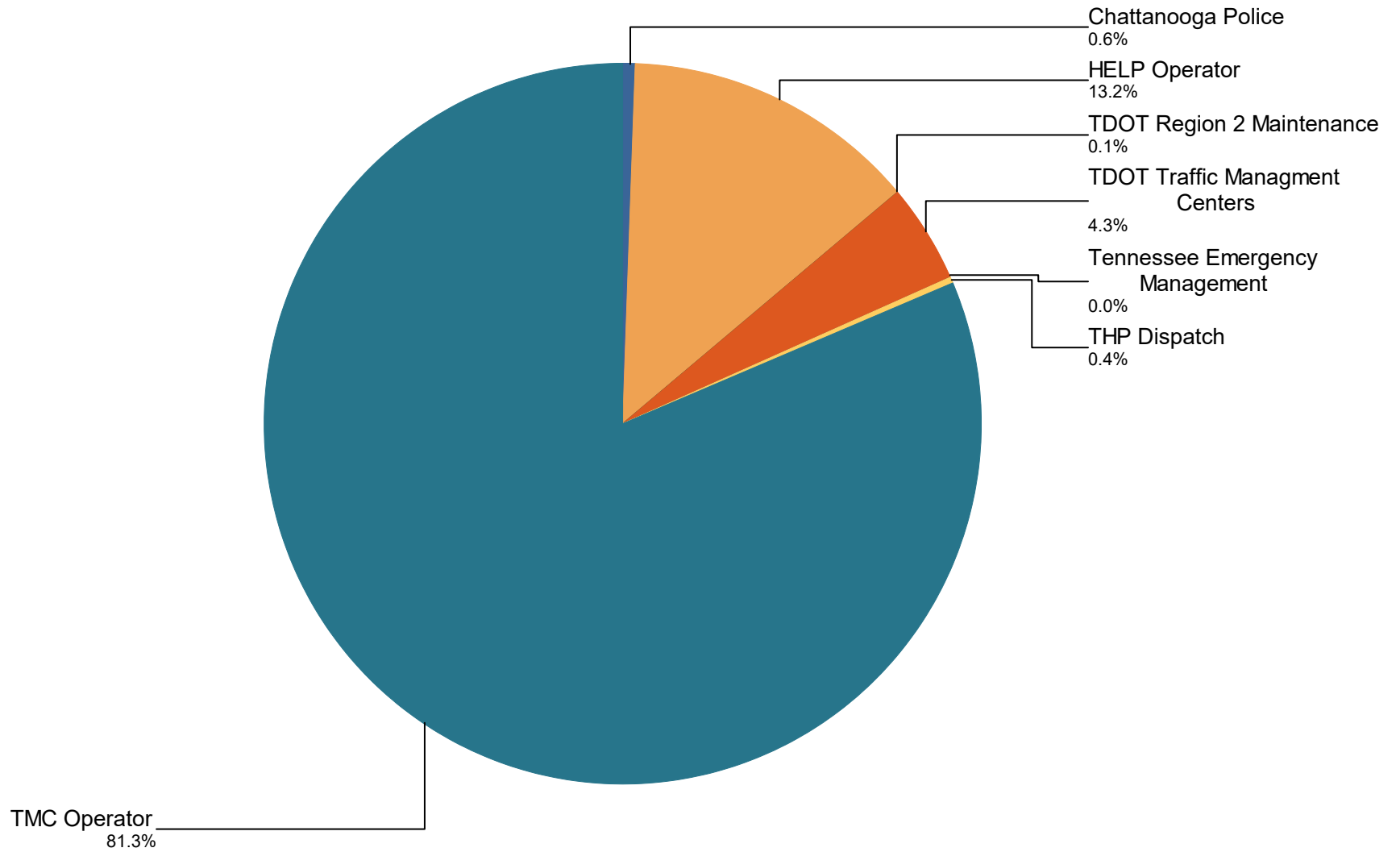
SR111	7	9	77.8
SR121	0	1	0.0
SR127	2	2	100.0
SR134	1	1	100.0
SR136	1	1	100.0
SR146	1	1	100.0
SR150	1	1	100.0
SR153	106	462	22.9
SR154	1	1	100.0
SR163	3	4	75.0
SR290	1	1	100.0
SR298	1	1	100.0
SR304	1	2	50.0
SR305	0	2	0.0
SR307	2	3	66.7
SR310	1	1	100.0
SR314	1	1	100.0
SR317	1	2	50.0
SR319	1	1	100.0
SR419	0	1	0.0
All Roadways	858	3,681	23.3

Percentage of Event Types for All Events in Current Quarter



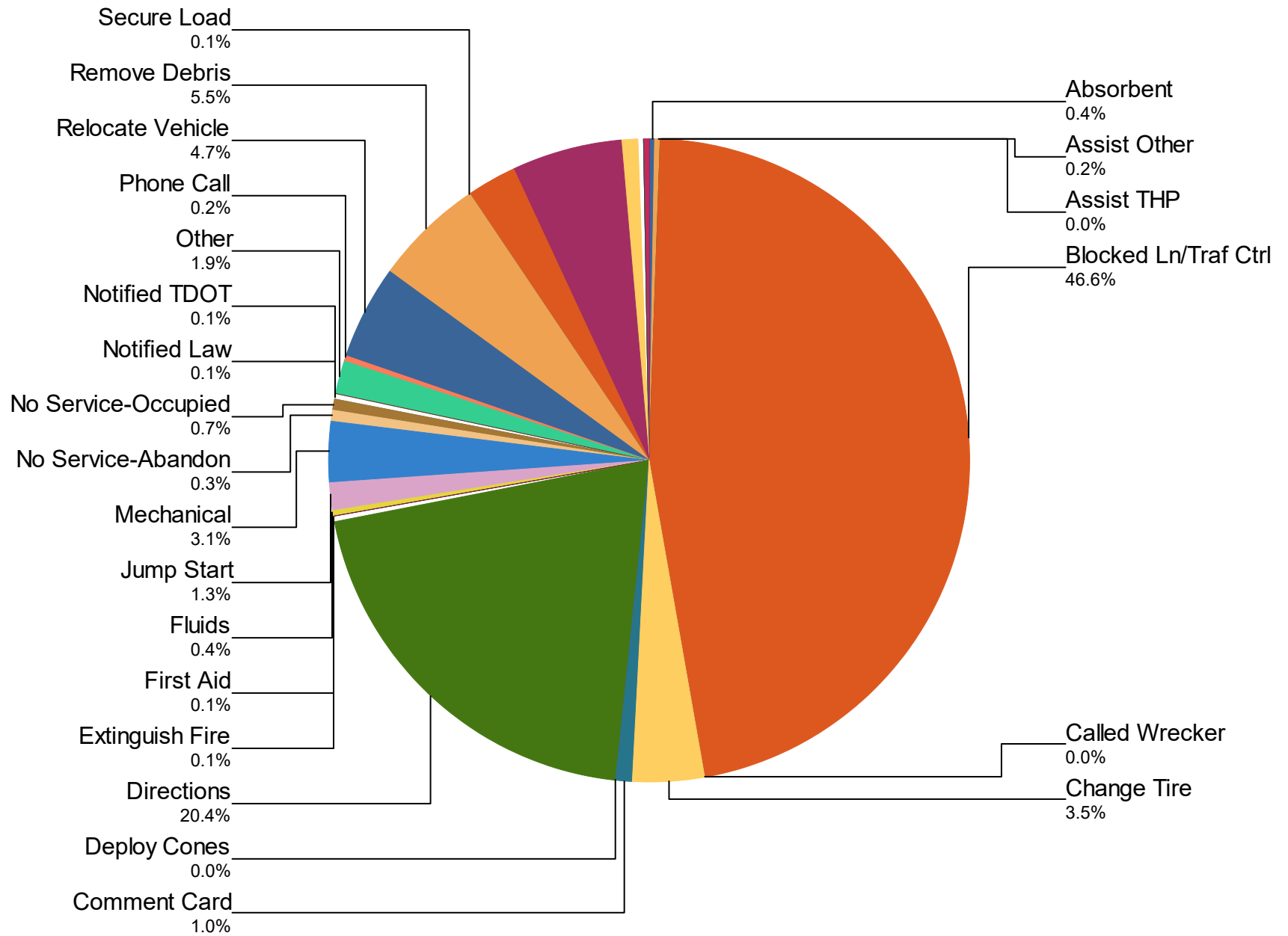
Event Types for All Events	October	November	December	Total	%
Abandoned Vehicle	103	54	53	210	4.8%
Amber Alert	2	1	0	3	0.1%
Bridge Work	1	0	0	1	0.0%
Congestion	9	42	36	87	2.0%
Daily Log	13	30	31	74	1.7%
Debris on Roadway	157	94	84	335	7.7%
Disabled Vehicle	788	597	589	1,974	45.1%
Emergency Vehicles	4	3	0	7	0.2%
Grass Fire	1	1	2	4	0.1%
Jack-Knife Tractor Trailer	5	2	2	9	0.2%
MultiVehicle Crash	189	188	165	542	12.4%
Off Ramp Backup	0	1	0	1	0.0%
Other	27	1	1	29	0.7%
Oversize Load	1	0	0	1	0.0%
Overturned Vehicle	17	6	5	28	0.6%
PD/Med/Fire Activity	44	2	24	70	1.6%
Pedestrian	2	0	0	2	0.0%
Police Activity	11	36	18	65	1.5%
PSA	2	2	0	4	0.1%
Rest Area	2	1	0	3	0.1%
Road Work - Emergency	11	1	0	12	0.3%
Road Work - Scheduled	210	165	139	514	11.7%
Single Vehicle Crash	64	58	45	167	3.8%
Special Event	14	0	0	14	0.3%
Test Incident	37	10	6	53	1.2%
Unknown	27	9	3	39	0.9%
Vehicle Fire	14	8	8	30	0.7%
Visibility	12	17	22	51	1.2%
Weather	23	10	13	46	1.1%
Total	1,790	1,339	1,246	4,375	100.0%

Incidents by Detection Source



Notifier Agency	October	November	December	Total	%
Chattanooga Police	0	8	19	27	0.6
HELP Operator	88	237	252	577	13.2
TDOT Region 2 Maintenance	1	1	2	4	0.1
TDOT Traffic Managment Centers	180	0	10	190	4.3
Tennessee Emergency Managem	0	1	0	1	0.0
THP Dispatch	1	7	11	19	0.4
TMC Operator	1,520	1,085	952	3,557	81.3
Total	1,790	1,339	1,246	4,375	100.0%

Percentage of Activity Types for HELP Truck Activities in Current Quarter



Activity Types for All Activities

	October	November	December	Total	%
Absorbent	5	11	4	20	0.4
Assist Other	4	4	2	10	0.2
Assist THP	1	0	0	1	0.0
Blocked Ln/Traf Ctrl	676	918	764	2,358	46.6
Called Wrecker	2	0	0	2	0.0
Change Tire	48	67	60	175	3.5
Comment Card	34	14	2	50	1.0
Deploy Cones	1	0	0	1	0.0
Directions	303	396	332	1,031	20.4
Extinguish Fire	1	2	0	3	0.1
First Aid	3	2	0	5	0.1
Fluids	8	9	3	20	0.4
Jump Start	21	19	25	65	1.3
Mechanical	69	54	36	159	3.1
No Service-Abandon	4	6	6	16	0.3
No Service-Occupied	21	5	10	36	0.7
Notified Law	2	1	1	4	0.1
Notified TDOT	2	1	0	3	0.1
Other	45	25	26	96	1.9
Phone Call	4	1	3	8	0.2
Relocate Vehicle	74	95	71	240	4.7
Remove Debris	94	98	85	277	5.5
Secure Load	1	1	1	3	0.1
Supply Fuel	40	37	47	124	2.5
Tag Abandoned	83	92	106	281	5.6
Tire	29	22	0	51	1.0
Transported	0	0	1	1	0.0
Unable to Locate	2	3	3	8	0.2
Unalbe to Locate	2	0	0	2	0.0
Welfare Check	1	6	3	10	0.2
Wrecker Towed	0	1	0	1	0.0

	October	November	December	Total	%
Total	1,580	1,890	1,591	5,061	100.0%

DMS Duration

	Oct	Nov	Dec	Quarter
Avg % ON Time	13.6	47.7	41.4	34.2
Avg Post Time (hr)	4.7	4.4	5.1	4.8
Avg Messages Per Sign	21.4	78.0	59.9	53.1
Total Messages Posted	899	3,274	2,517	6,690