

Includes All Responders

Reporting Period: July 1, 2022 to September 30, 2022

Statewide

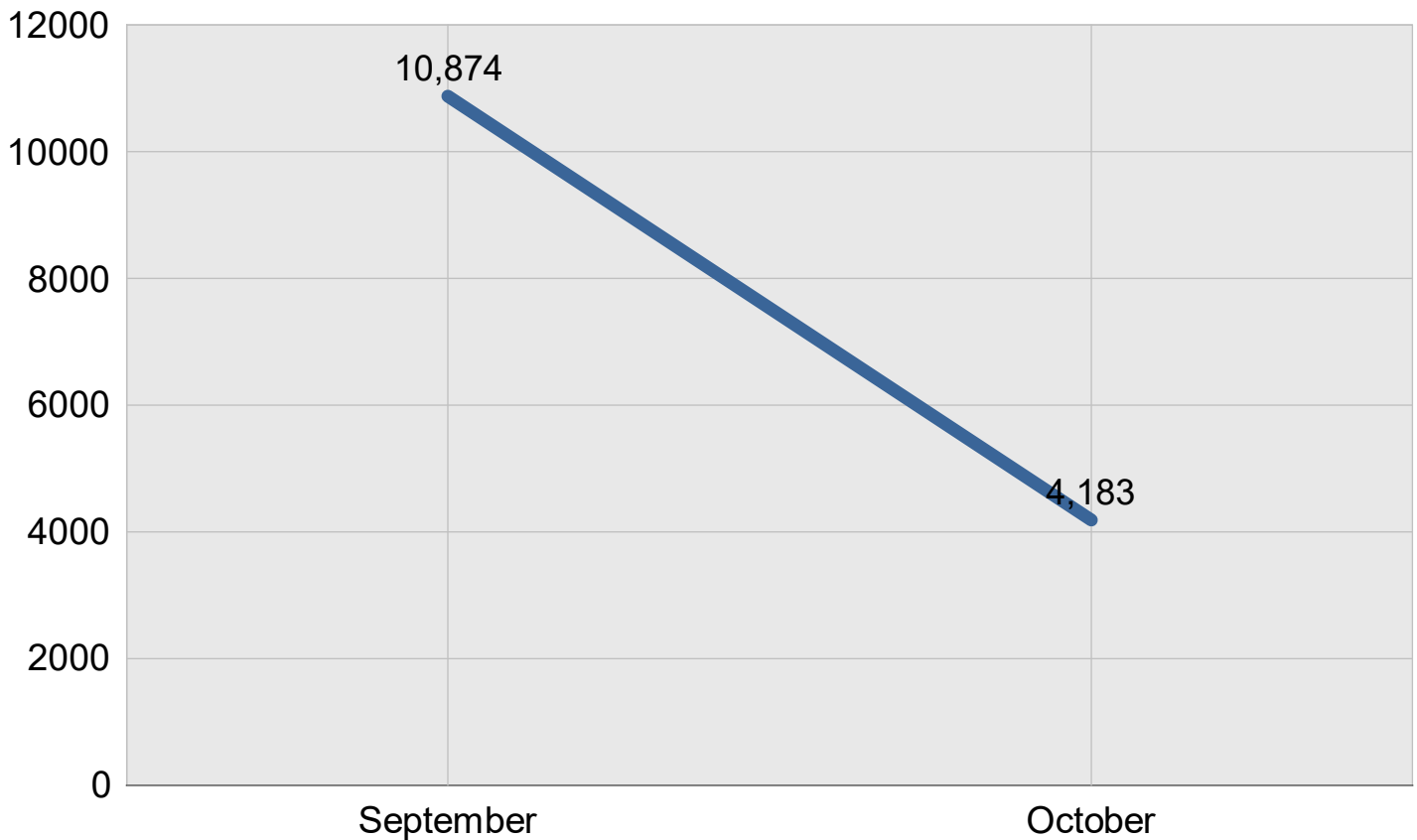
Created on: October 13, 2022 9:16 am County: All Counties

Report Template version 1.0

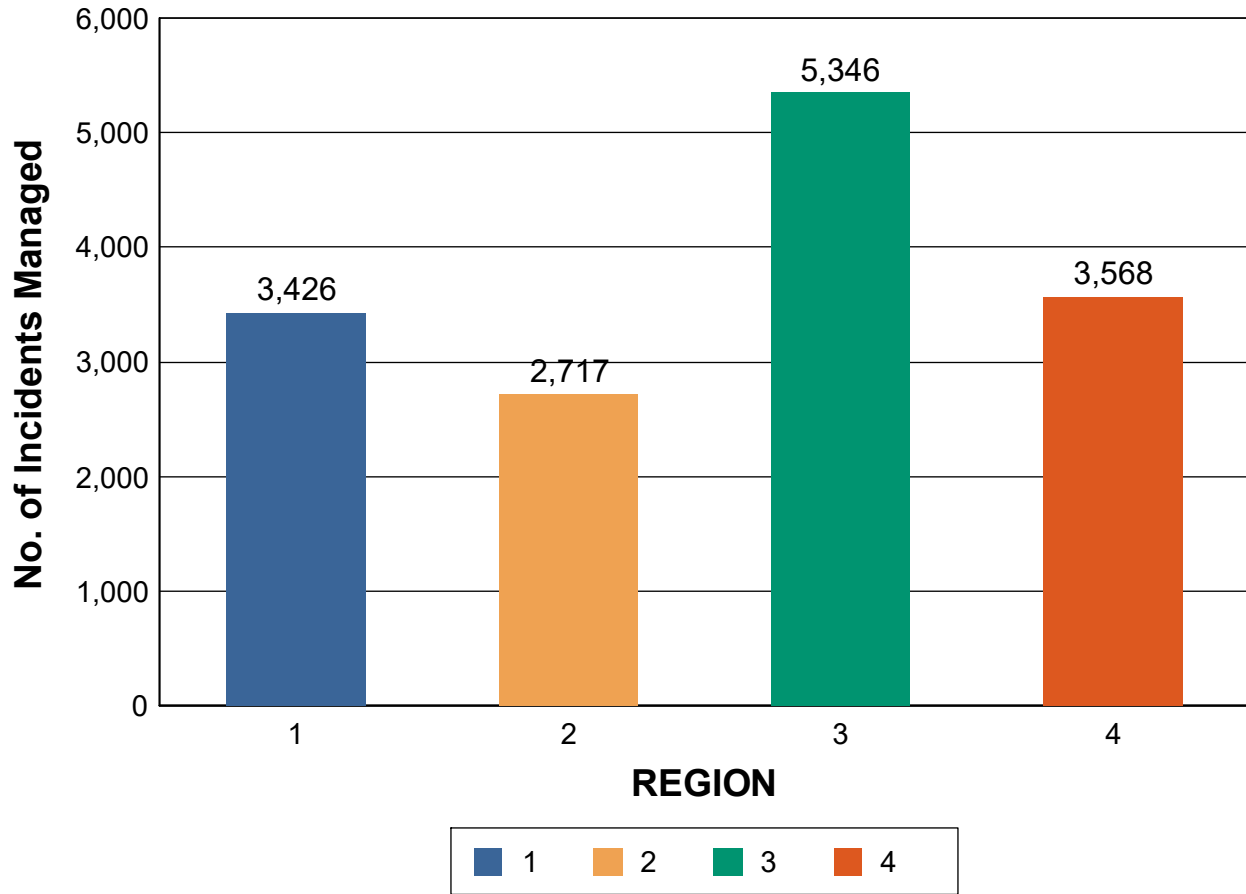
**Total Incidents Managed This Quarter:15,057**

### Incidents Managed

Incidents Managed - Monthly



### Incidents Managed- Region

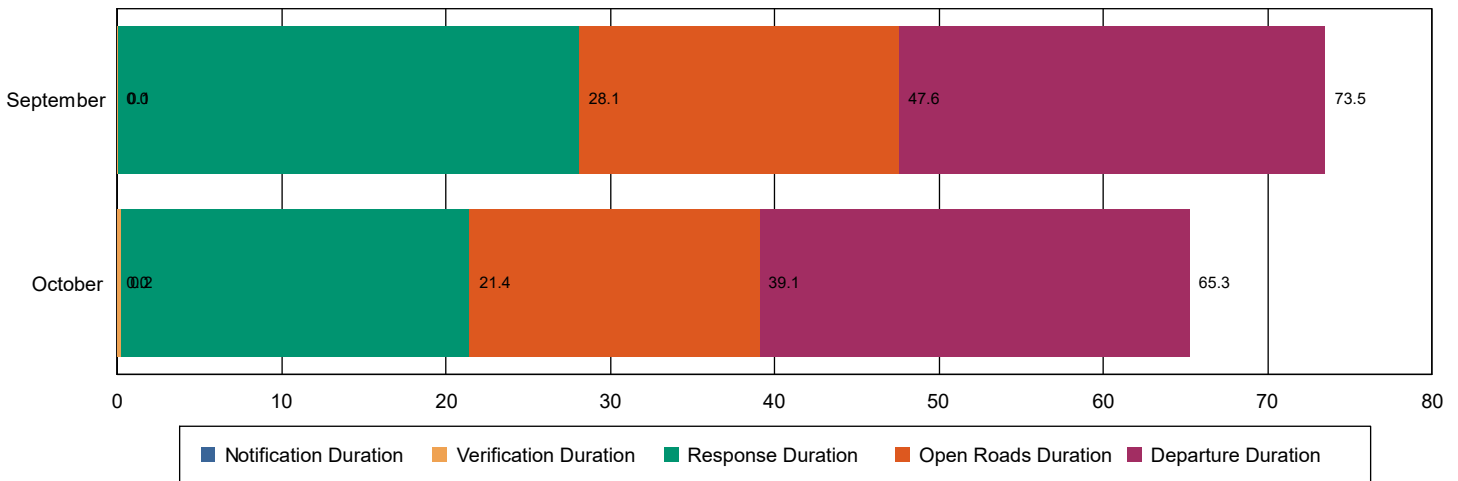


# Performance Measures Summary

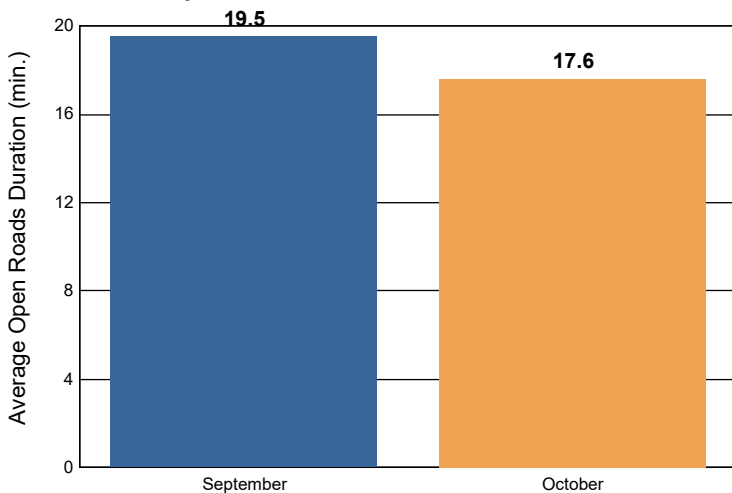
## Incidents Overall Response

	September	October	Total
Events included in Performance Measures	1,886	725	2,611
Notification Duration (min.)*	0.0	0.0	0.0
Verification Duration (min.)	0.1	0.2	0.1
Response Duration (min.) [First Notification to First Arrival]	28.0	21.3	26.1
Open Roads Duration (min.) [First Arrival to Travel Lanes Cleared]	19.5	17.6	19.0
Departure Duration (min.) [Travel Lanes Cleared to Last Departure]	25.9	26.2	25.9
<b>Roadway Clearance Duration (min.) [First Notif to Travel Lanes Cleared]</b>	<b>47.6</b>	<b>39.1</b>	<b>45.2</b>
<b>Incident Clearance Duration (min.) [First Notif to Last Departure]</b>	<b>73.5</b>	<b>65.3</b>	<b>71.2</b>

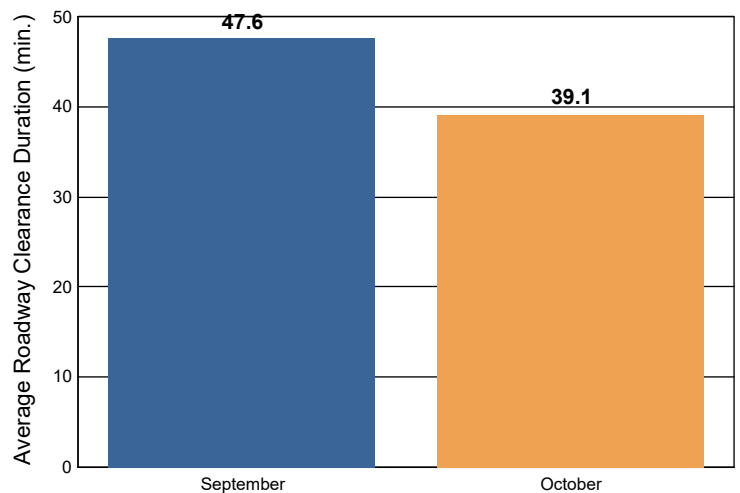
### Incident Clearance Duration



### Open Roads Duration / Month



### Roadway Clearance Duration / Month

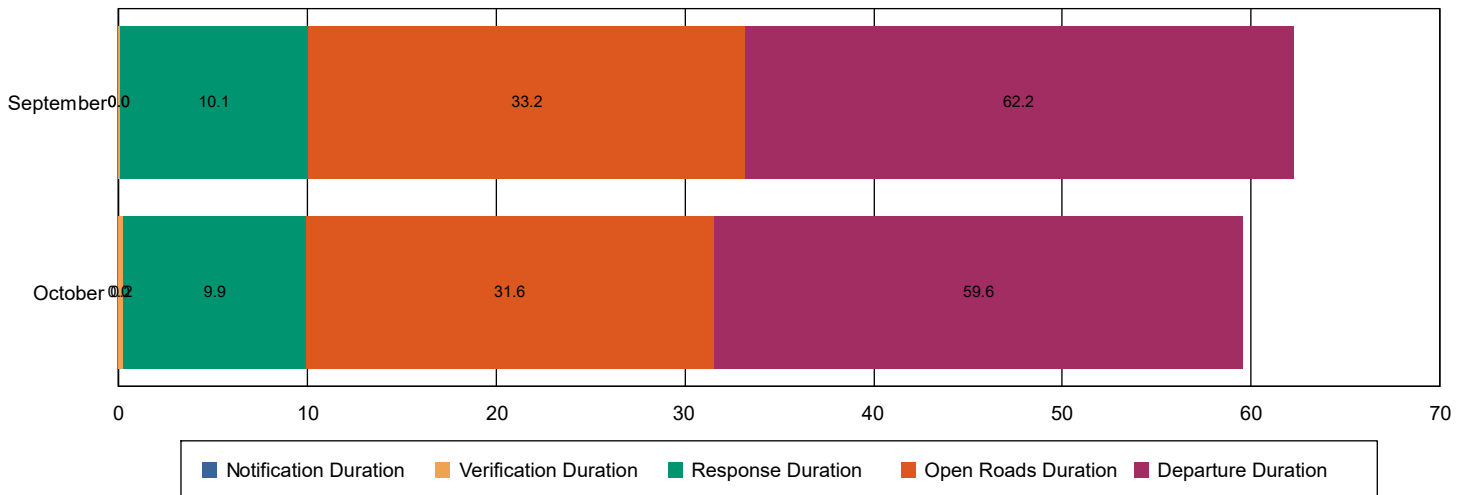


# Performance Measures Summary

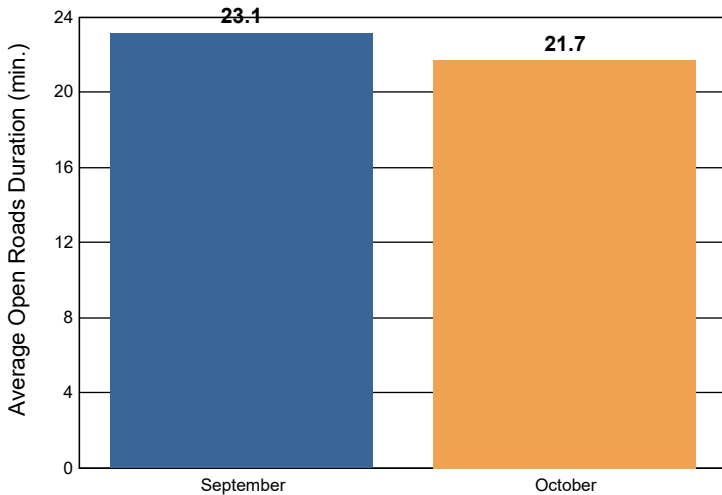
## Incidents with HELP Truck Response

	September	October	Total
Events included in Performance Measures	1,475	565	2,040
Notification Duration (min.)	0.0	0.0	0.0
Verification Duration (min.)	0.0	0.2	0.1
Response Duration (min.) [First Notification to First Arrival]	10.0	9.7	9.9
Open Roads Duration (min.) [First Arrival to Travel Lanes Cleared]	23.1	21.7	22.8
Departure Duration (min.) [Travel Lanes Cleared to Last Departure]	29.0	28.0	28.7
<b>Roadway Clearance Duration (min.) [First Notif to Travel Lanes Cleared]</b>	<b>33.2</b>	<b>31.6</b>	<b>32.8</b>
<b>Incident Clearance Duration (min.) [First Notif to Last Departure]</b>	<b>62.2</b>	<b>59.6</b>	<b>61.5</b>

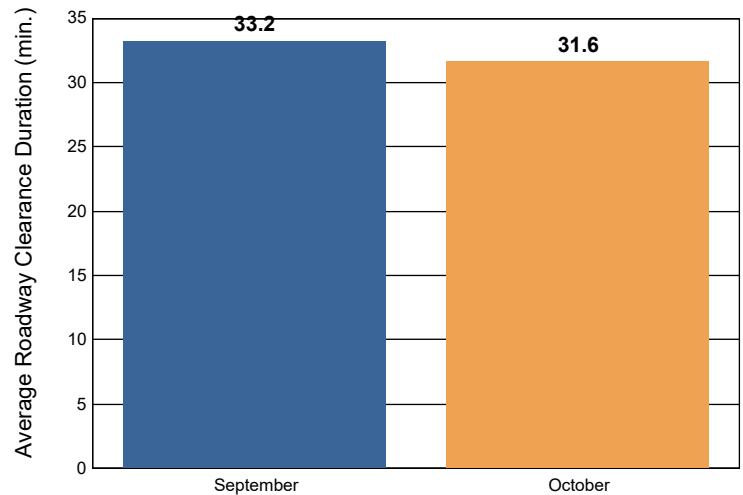
### Incident Clearance Duration



### Open Roads Duration / Month



### Roadway Clearance Duration / Month

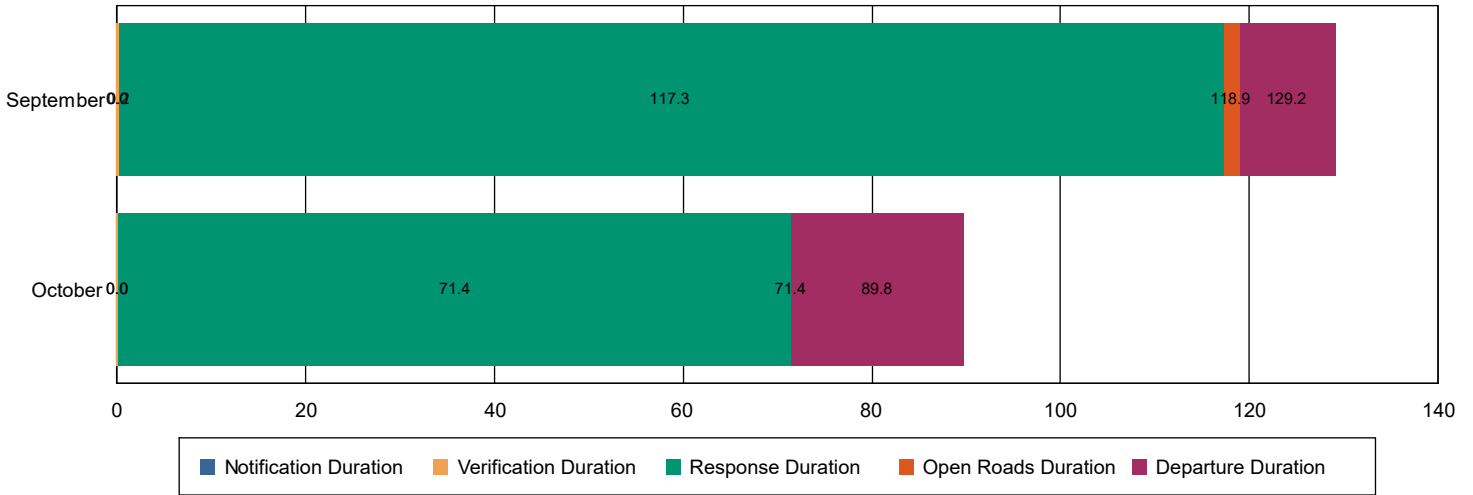


# Performance Measures Summary

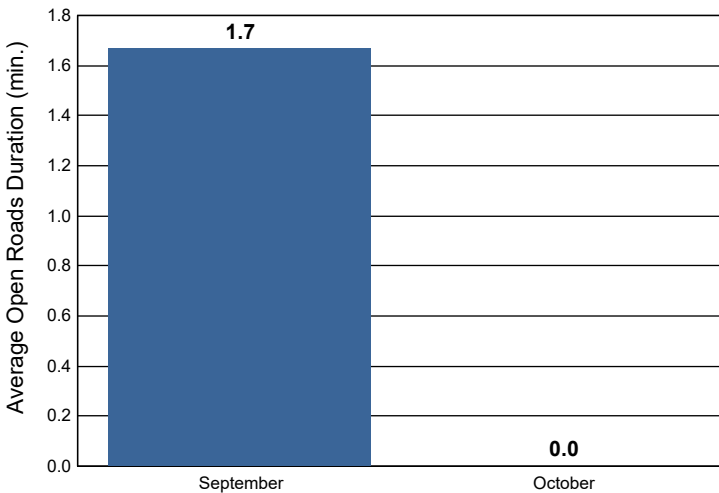
## Incidents without HELP Truck Response

	September	October	Total
Events included in Performance Measures	411	160	571
Notification Duration (min.)	0.0	0.0	0.0
Verification Duration (min.)	0.2	0.0	0.1
Response Duration (min.) [First Notification to First Arrival]	117.1	71.4	103.2
Open Roads Duration (min.) [First Arrival to Travel Lanes Cleared]	1.7	0.0	1.2
Departure Duration (min.) [Travel Lanes Cleared to Last Departure]	10.2	18.4	12.7
<b>Roadway Clearance Duration (min.) [First Notif to Travel Lanes Cleared]</b>	<b>118.9</b>	<b>71.4</b>	<b>104.5</b>
<b>Incident Clearance Duration (min.) [First Notif to Last Departure]</b>	<b>129.2</b>	<b>89.8</b>	<b>117.2</b>

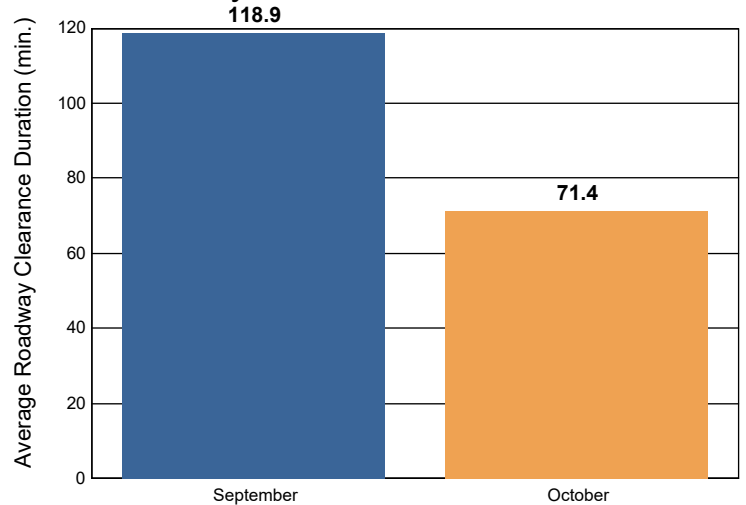
### Incident Clearance Duration



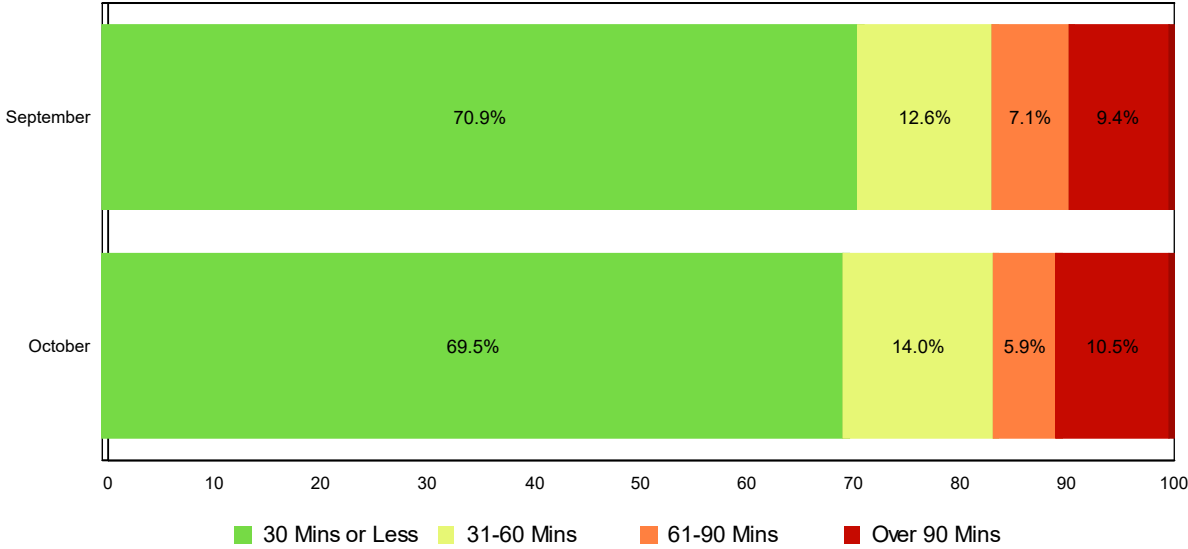
### Open Roads Duration / Month



### Roadway Clearance Duration / Month

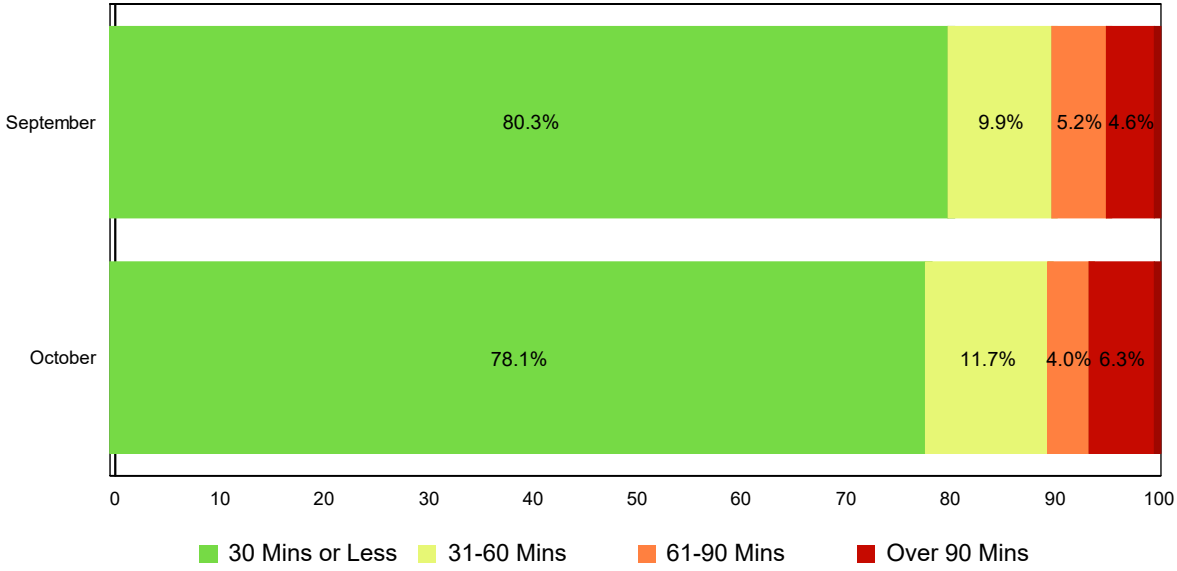


# Lane Blockage Clearance Times - Overall



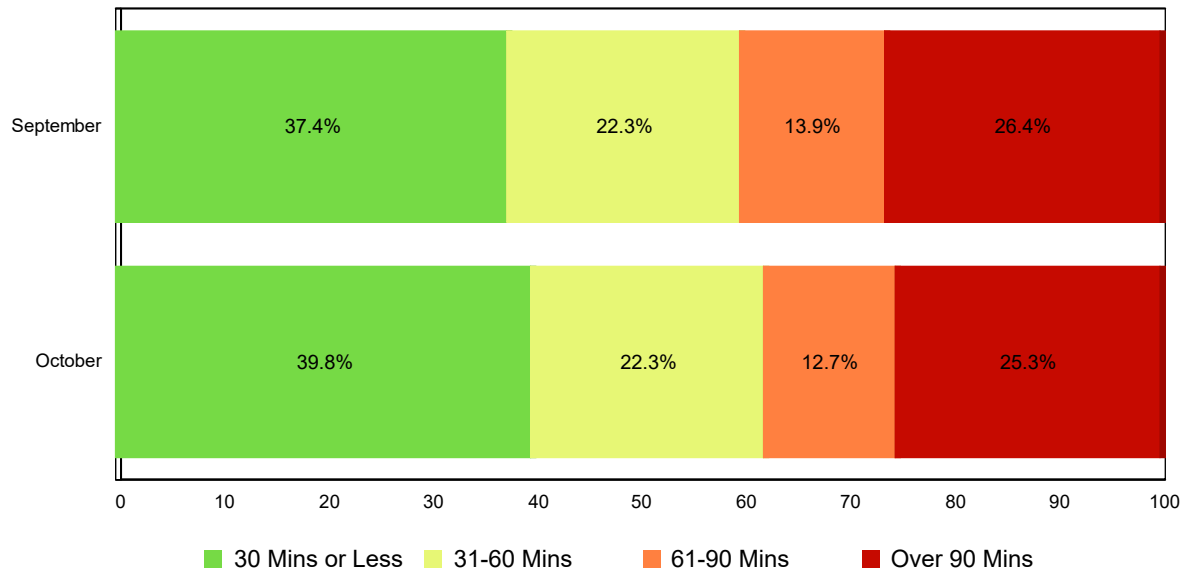
Month	30 Mins or Less	31-60 Mins	61-90 Mins	Over 90 Mins	Total # of Events
September	1,346	236	133	174	1,889
October	511	100	43	74	728
<b>Total # of Events</b>	<b>1,857</b>	<b>336</b>	<b>176</b>	<b>248</b>	<b>2,617</b>

# Lane Blockage Clearance Times - with HELP Truck Response



Month	30 Mins or Less	31-60 Mins	61-90 Mins	Over 90 Mins	Total # of Events
September	1,190	145	76	67	1,478
October	447	64	22	35	568
<b>Total # of Events</b>	<b>1,637</b>	<b>209</b>	<b>98</b>	<b>102</b>	<b>2,046</b>

## Lane Blockage Clearance Times - without HELP Truck Response



Month	30 Mins or Less	31-60 Mins	61-90 Mins	Over 90 Mins	Total # of Events
September	156	91	57	107	411
October	64	36	21	39	160
<b>Total # of Events</b>	<b>220</b>	<b>127</b>	<b>78</b>	<b>146</b>	<b>571</b>



## All Incidents with Travel Lane Blockage - Overall

No. of Lanes Blocked	%	Count	%	Count	%	Count	%	Count	Avg Clear Time (Min)
1	78	1498	89	1694	94	1789	6	124	27
2	56	323	75	430	83	479	17	96	53
3	29	35	58	70	79	96	21	25	66
4	24	8	38	13	65	22	35	12	92
5	67	2	100	3	100	3	0	0	25
6	0	0	0	0	100	1	0	0	68
<b>Totals</b>	<b>70.5</b>	<b>1866</b>	<b>83.5</b>	<b>2210</b>	<b>90.3</b>	<b>2390</b>	<b>9.7</b>	<b>257</b>	<b>35</b>
	<b>&lt;=30 Mins</b>		<b>&lt;=60 Mins</b>		<b>&lt;=90 Mins</b>		<b>&gt;90 Mins</b>		

## All Incidents with Travel Lane Blockage and HELP Truck Response

No. of Lanes Blocked	%	Count	%	Count	%	Count	%	Count	Avg Clear Time (Min)
1	87	1316	95	1430	97	1472	3	41	16
2	67	285	83	351	90	383	10	42	36
3	35	33	64	61	84	80	16	15	57
4	30	8	48	13	74	20	26	7	87
5	67	2	100	3	100	3	0	0	25
6	0	0	0	0	100	1	0	0	68
<b>Totals</b>	<b>79.7</b>	<b>1644</b>	<b>90.0</b>	<b>1858</b>	<b>94.9</b>	<b>1959</b>	<b>5.1</b>	<b>105</b>	<b>23</b>
	<b>&lt;=30 Mins</b>		<b>&lt;=60 Mins</b>		<b>&lt;=90 Mins</b>		<b>&gt;90 Mins</b>		

## Travel Lane Blockage Events- Roadway

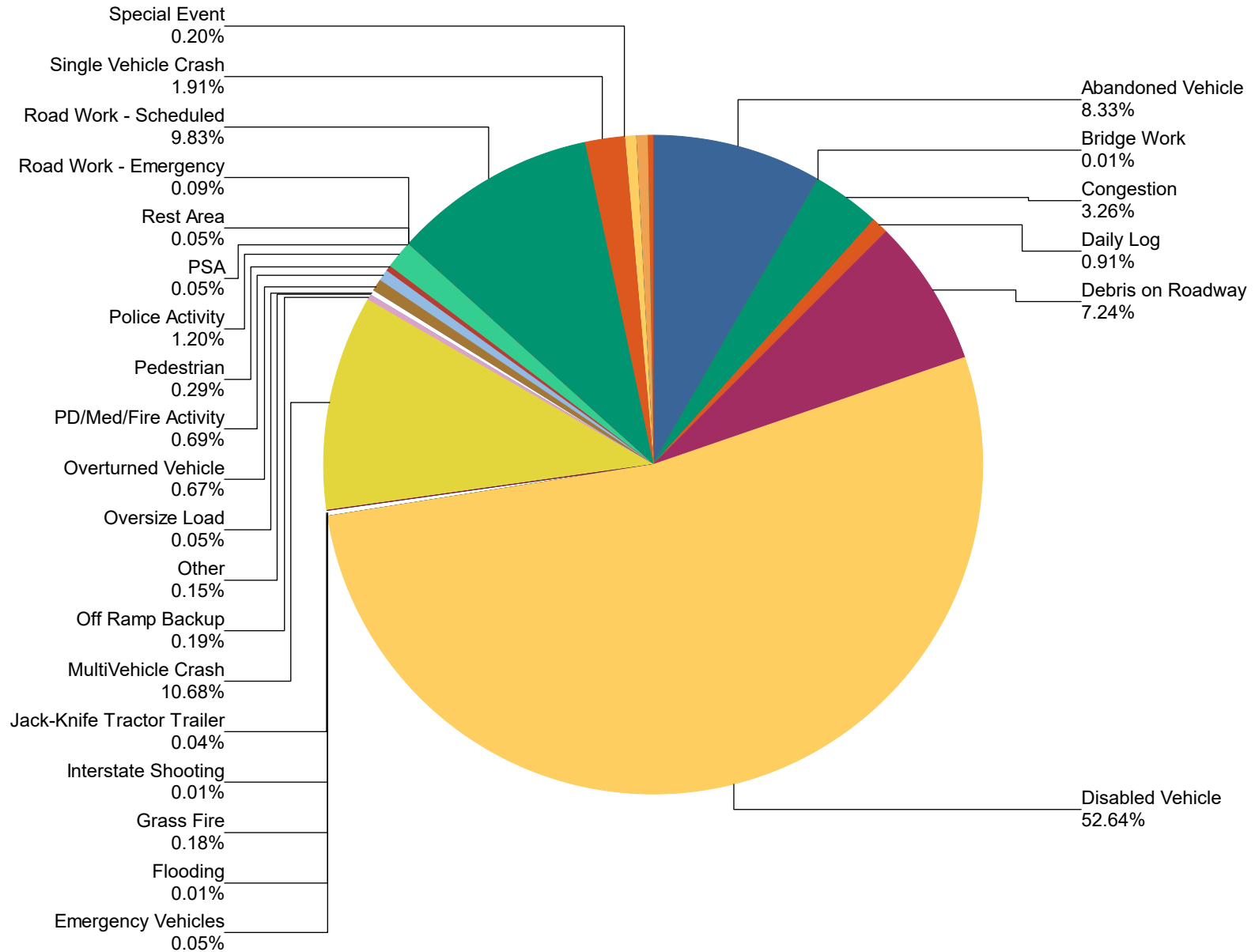
Roadway	Lane Blockage Events Count	All Incidents	% of Incidents with Lane Blockage
I0024	460	2,102	21.9
I0024E1	7	12	58.3
I0026	9	15	60.0
I0040	766	4,149	18.5
I0055	121	416	29.1
I0065	277	1,165	23.8
I0075	175	1,338	13.1
I0081	15	31	48.4
I0124	0	3	0.0
I0140	5	89	5.6
I0240	256	1,429	17.9
I0269	1	1	100.0
I0275	11	122	9.0
I0440	50	300	16.7
I0640	41	397	10.3
I0840	2	36	5.6
Region 1 TMC	0	49	0.0
Region 2 TMC	1	45	2.2
Region 3 TMC	1	44	2.3
Sam Cooper	0	4	0.0
SR001	5	7	71.4
SR002	5	8	62.5
SR003	2	4	50.0
SR005	1	1	100.0
SR006	13	70	18.6
SR008	2	2	100.0
SR009	5	5	100.0
SR010	2	2	100.0
SR011	1	3	33.3

<b>SR012</b>	1	3	<b>33.3</b>
<b>SR015</b>	1	1	<b>100.0</b>
<b>SR017</b>	1	1	<b>100.0</b>
<b>SR020</b>	1	1	<b>100.0</b>
<b>SR022</b>	1	2	<b>50.0</b>
<b>SR024</b>	1	1	<b>100.0</b>
<b>SR028</b>	4	3	<b>133.3</b>
<b>SR029</b>	38	192	<b>19.8</b>
<b>SR030</b>	2	1	<b>200.0</b>
<b>SR032</b>	1	1	<b>100.0</b>
<b>SR033</b>	2	2	<b>100.0</b>
<b>SR034</b>	5	7	<b>71.4</b>
<b>SR035</b>	1	1	<b>100.0</b>
<b>SR036</b>	3	3	<b>100.0</b>
<b>SR037</b>	1	1	<b>100.0</b>
<b>SR040</b>	3	3	<b>100.0</b>
<b>SR048</b>	1	1	<b>100.0</b>
<b>SR052</b>	4	3	<b>133.3</b>
<b>SR053</b>	2	2	<b>100.0</b>
<b>SR057</b>	2	2	<b>100.0</b>
<b>SR058</b>	2	3	<b>66.7</b>
<b>SR060</b>	2	3	<b>66.7</b>
<b>SR061</b>	3	3	<b>100.0</b>
<b>SR062</b>	5	7	<b>71.4</b>
<b>SR066</b>	2	4	<b>50.0</b>
<b>SR068</b>	2	2	<b>100.0</b>
<b>SR071</b>	7	9	<b>77.8</b>
<b>SR075</b>	2	2	<b>100.0</b>
<b>SR084</b>	1	1	<b>100.0</b>
<b>SR091</b>	1	1	<b>100.0</b>
<b>SR096</b>	0	1	<b>0.0</b>
<b>SR099</b>	0	1	<b>0.0</b>
<b>SR100</b>	1	1	<b>100.0</b>

SR102	0	1	0.0
SR106	2	3	66.7
SR109	1	1	100.0
SR111	4	4	100.0
SR112	1	1	100.0
SR115	20	45	44.4
SR129	0	1	0.0
SR135	1	1	100.0
SR136	1	1	100.0
SR150	0	1	0.0
SR153	66	340	19.4
SR155	79	338	23.4
SR158	0	2	0.0
SR162	1	13	7.7
SR169	1	1	100.0
SR174	1	1	100.0
SR196	0	1	0.0
SR211	2	1	200.0
SR223	2	1	200.0
SR254	1	4	25.0
SR255	0	1	0.0
SR259	1	1	100.0
SR262	1	1	100.0
SR266	0	1	0.0
SR269	0	1	0.0
SR282	0	1	0.0
SR297	0	1	0.0
SR298	1	1	100.0
SR300	8	21	38.1
SR304	1	1	100.0
SR308	0	1	0.0
SR312	1	2	50.0
SR317	2	3	66.7

<b>SR319</b>	1	1	<b>100.0</b>
<b>SR320</b>	2	2	<b>100.0</b>
<b>SR332</b>	3	3	<b>100.0</b>
<b>SR340</b>	1	1	<b>100.0</b>
<b>SR372</b>	0	1	<b>0.0</b>
<b>SR385</b>	142	515	<b>27.6</b>
<b>SR386</b>	13	30	<b>43.3</b>
<b>SR394</b>	0	4	<b>0.0</b>
<b>SR443</b>	1	1	<b>100.0</b>
<b>All Roadways</b>	<b>2,698</b>	<b>13,473</b>	<b>20.0</b>

## Percentage of Event Types for All Events in Current Quarter

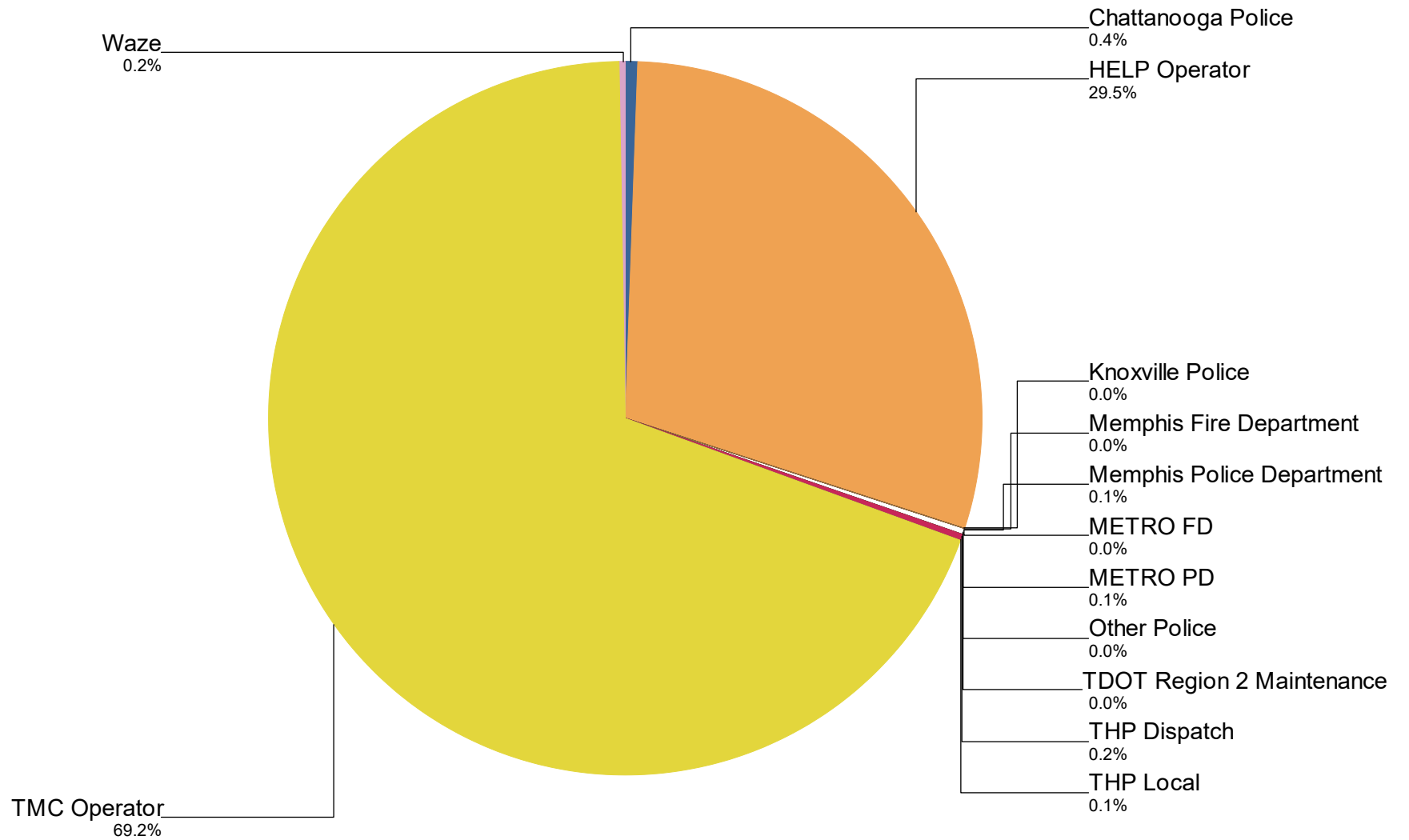


<b>Event Types for All Events</b>	<b>September</b>	<b>October</b>	<b>Total</b>	<b>%</b>
<b>Abandoned Vehicle</b>	915	348	<b>1,263</b>	<b>8.3%</b>
<b>Bridge Work</b>	1	0	<b>1</b>	<b>0.0%</b>
<b>Congestion</b>	319	176	<b>495</b>	<b>3.3%</b>
<b>Daily Log</b>	94	44	<b>138</b>	<b>0.9%</b>
<b>Debris on Roadway</b>	809	289	<b>1,098</b>	<b>7.2%</b>
<b>Disabled Vehicle</b>	5,840	2,143	<b>7,983</b>	<b>52.6%</b>
<b>Emergency Vehicles</b>	6	1	<b>7</b>	<b>0.0%</b>
<b>Flooding</b>	2	0	<b>2</b>	<b>0.0%</b>
<b>Grass Fire</b>	14	14	<b>28</b>	<b>0.2%</b>
<b>Interstate Shooting</b>	2	0	<b>2</b>	<b>0.0%</b>
<b>Jack-Knife Tractor Trailer</b>	4	2	<b>6</b>	<b>0.0%</b>
<b>MultiVehicle Crash</b>	1,142	479	<b>1,621</b>	<b>10.7%</b>
<b>Off Ramp Backup</b>	20	9	<b>29</b>	<b>0.2%</b>
<b>Other</b>	16	6	<b>22</b>	<b>0.1%</b>
<b>Oversize Load</b>	6	2	<b>8</b>	<b>0.1%</b>
<b>Overturned Vehicle</b>	81	20	<b>101</b>	<b>0.7%</b>
<b>PD/Med/Fire Activity</b>	76	28	<b>104</b>	<b>0.7%</b>
<b>Pedestrian</b>	33	11	<b>44</b>	<b>0.3%</b>
<b>Police Activity</b>	136	46	<b>182</b>	<b>1.2%</b>
<b>PSA</b>	6	1	<b>7</b>	<b>0.0%</b>
<b>Rest Area</b>	4	3	<b>7</b>	<b>0.0%</b>
<b>Road Work - Emergency</b>	11	2	<b>13</b>	<b>0.1%</b>
<b>Road Work - Scheduled</b>	1,026	464	<b>1,490</b>	<b>9.8%</b>
<b>Single Vehicle Crash</b>	214	76	<b>290</b>	<b>1.9%</b>
<b>Special Event</b>	25	5	<b>30</b>	<b>0.2%</b>
<b>Test Incident</b>	32	24	<b>56</b>	<b>0.4%</b>
<b>Towing</b>	2	0	<b>2</b>	<b>0.0%</b>
<b>Unknown</b>	3	0	<b>3</b>	<b>0.0%</b>
<b>Vehicle Fire</b>	67	16	<b>83</b>	<b>0.5%</b>
<b>Visibility</b>	21	1	<b>22</b>	<b>0.1%</b>
<b>Weather</b>	21	4	<b>25</b>	<b>0.2%</b>



	<b>September</b>	<b>October</b>	<b>Total</b>	<b>%</b>
<b>Wildfire</b>	1	0	<b>1</b>	<b>0.0%</b>
<b>Wrong Way Driver</b>	2	1	<b>3</b>	<b>0.0%</b>
<b>Total</b>	<b>10,951</b>	<b>4,215</b>	<b>15,166</b>	<b>100.0%</b>

# Incidents by Detection Source



Notifier Agency	September	October	Total	%
Chattanooga Police	46	22	68	0.4
HELP Operator	3,307	1,172	4,479	29.5
Knoxville Police	3	0	3	0.0
Memphis Fire Department	1	0	1	0.0
Memphis Police Department	10	3	13	0.1
METRO FD	1	0	1	0.0
METRO PD	16	0	16	0.1
Other Police	3	0	3	0.0
TDOT Region 2 Maintenance	5	0	5	0.0
THP Dispatch	27	9	36	0.2
THP Local	7	5	12	0.1
TMC Operator	7,505	2,995	10,500	69.2
Waze	20	9	29	0.2
<b>Total</b>	<b>10,951</b>	<b>4,215</b>	<b>15,166</b>	<b>100.0%</b>