

Pavement Management 2022 Data



Regions 1 & 2:

Interstates and All State Routes

Regions 3 & 4:

Interstates and State Routes on the NHS

Contents

- Explanation of Terms 1
- 1. Statewide Pavement Conditions..... 4
 - 1.1 Interstates..... 4
 - 1.2 State Routes..... 6
- 2. Region 1 Pavement Conditions (*Average of One Mile Segments*)..... 9
 - 2.1 Region 1 Interstates..... 10
 - 2.2 Region 1 State Routes..... 12
- 3. Region 2 Pavement Conditions (*Average of One Mile Segments*)..... 15
 - 3.1 Region 2 Interstates..... 16
 - 3.2 Region 2 State Routes..... 18
- 4. Region 3 Pavement Conditions (*Average of One Mile Segments*)..... 21
 - 4.1 Region 3 Interstates..... 22
 - 4.2 Region 3 State Routes..... 24
- 5. Region 4 Pavement Conditions (*Average of One Mile Segments*)..... 26
 - 5.1 Region 4 Interstates..... 27
 - 5.2 Region 4 State Routes..... 29
- Appendix I: TAMP Metrics 31
- Appendix II: List of segments in poor condition (1-mile segment)..... 37
- Appendix III: List of segments in poor condition (Project segment)..... 40

Explanation of Terms

IRI – International Roughness Index

- Measurement of the number of vertical deviations over a section of road.
- Measured in inches/mile
- Perfect is a “0”

HC IRI – Half-Car IRI

- Half-Car IRI is used by TDOT’s profilers for construction acceptance testing. The standard method that is collected by our consultants is Quarter-Car IRI. Half-Car IRI values tend to be slightly better than Quarter-Car IRI values obtained from the same location.

PSI – Pavement Smoothness Index

- Measure of the ROUGHNESS of the road on a scale of 0 – 5.
- Perfect is a “5”
- Roughness is defined as: “The deviations of a pavement surface from a true planar surface with characteristic dimensions that affect vehicle dynamics, ride quality, dynamic loads, and drainage; for example, longitudinal profile, transverse profile, and cross slope.”
- Relates to IRI through: $PSI = 5 * e^{(-0.0055*IRI)}$

PDI – Pavement Distress Index

- A measurement of the roadway DISTRESS on a scale from 0 – 5.
- Perfect is a “5”
- Distresses that are evaluated include the following: Fatigue, Rutting, Longitudinal Cracks in the Wheel Path, Patching, Block Cracking, Raveling, Transverse Cracks, & Longitudinal Cracks (Non-Wheel Path).
- Each individual distress mentioned above receives a DEDUCT VALUE based on the severity & number of distresses on a given stretch of road surface.
- All of the D.V.s are given a weight and subtracted from 5.

PQI – Pavement Quality Index

- Overall Index of the roadway on a scale from 0 – 5.
- Perfect is a “5”
- $PQI = PDI^{0.7} * PSI^{0.3}$
- PDI encompasses the largest portion of this index because Pavement Distresses indicate current problems and future deterioration of the roadway surface.

Additional Notes for Consideration

- Project length segments are created by breaking the roadway network into various-length “segments”, creating a new segment break at:
 - County lines
 - Changes in NHS/Non-NHS designation
 - Termini of known historical projects
 - Changes in pavement type (Concrete/Asphalt)
- Project length data and percentages are summarized by lane miles. One-mile segment data is processed by centerline miles.
- Non-NHS state route condition is collected biennially, or every other year. Region 1 and 2 non-NHS state routes are collected in even years and Regions 3 and 4 are collected in odd years. Interstate and NHS routes are collected every year. In an effort to provide a comprehensive report, full extent data from the previous years’ report is provided for off-cycle regions.

Performance Measures and Targets

- The measures and targets shown in this report are based on TDOT’s definition for State of Good Repair which is listed as below.

TDOT's definition for State of Good Repair

System	TDOT's Performance Measure	Good	Poor
Interstate	PQI	PQI>4.0	PQI<2.0
State Routes	PQI	PQI>3.5	PQI<2.0

TDOT State of Good Repair Performance Targets

System	Good	Poor
Interstate	>50%	<0.5%
State Routes	>45%	<0.5%

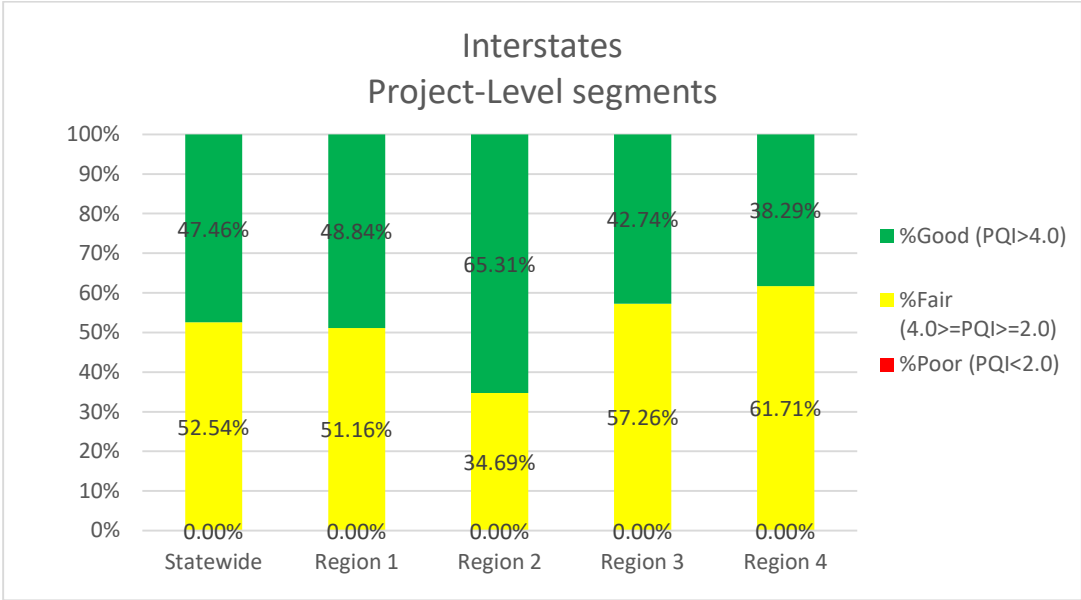
- Please note that the SOGR measures and targets in this report are different from the Federal measures and targets defined in [23 CFR 490](#). The targets based on Federal measures are listed as below. These targets are subject to change as new TAMP is under development. Reporting of Federal measures for the State of Tennessee can be found on the [FHWA dashboard](#).

TDOT State of Good Repair Targets based on Federal measures

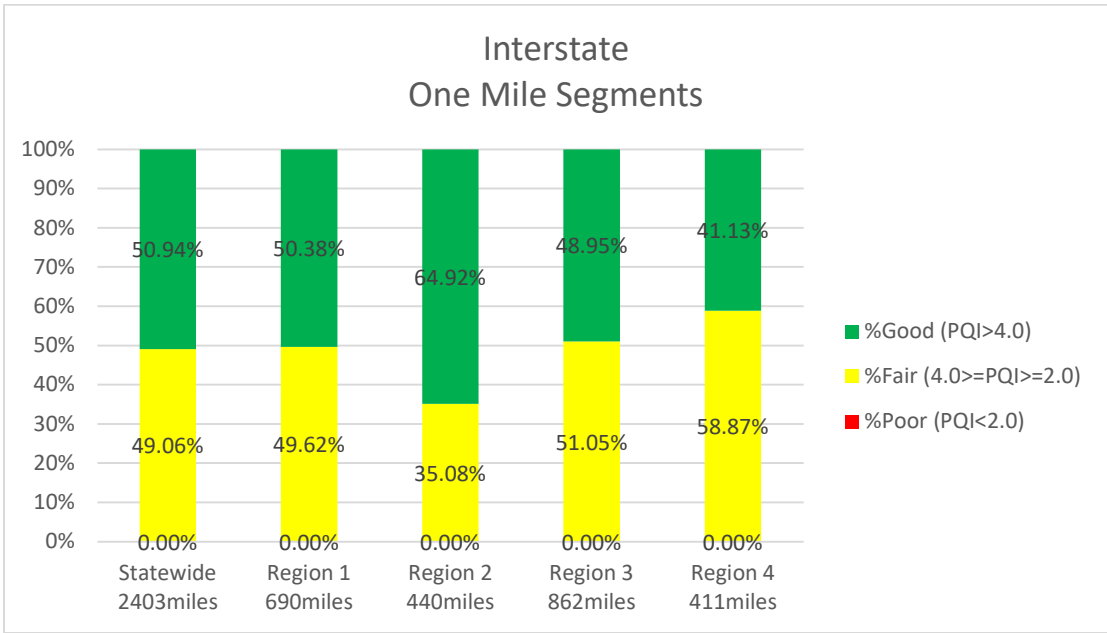
System	Good	Poor
Interstate	>60%	<1%
Non-Interstate NHS	>40%	<4%

1. Statewide Pavement Conditions

1.1 Interstates



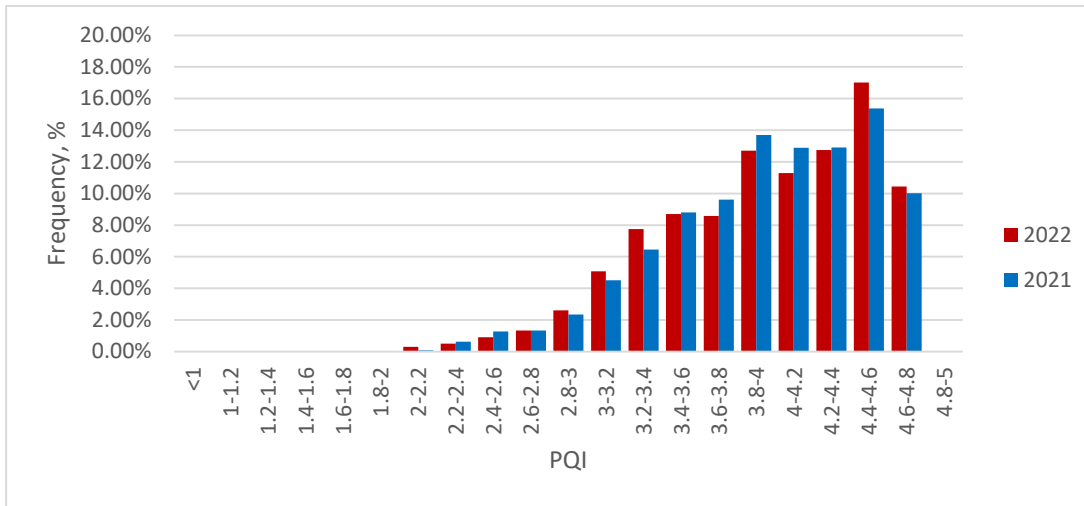
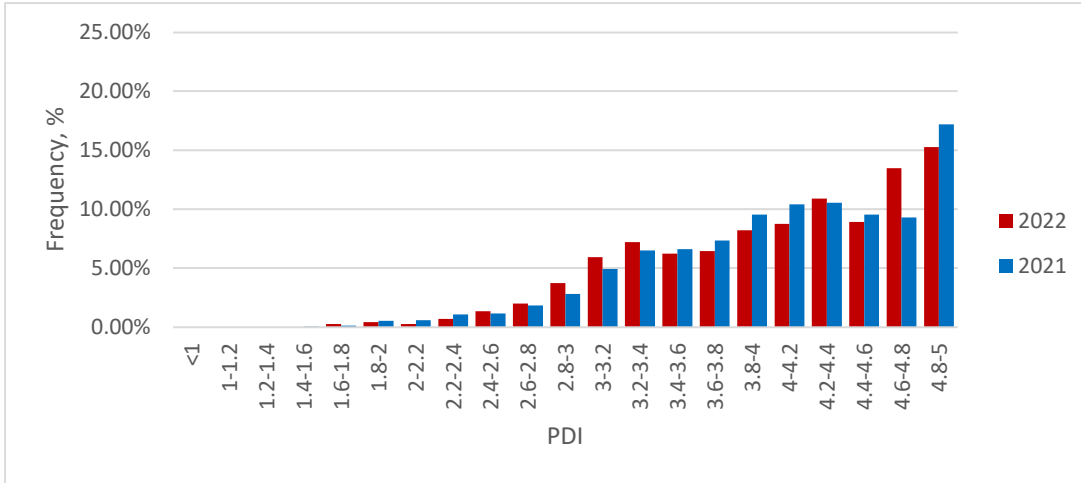
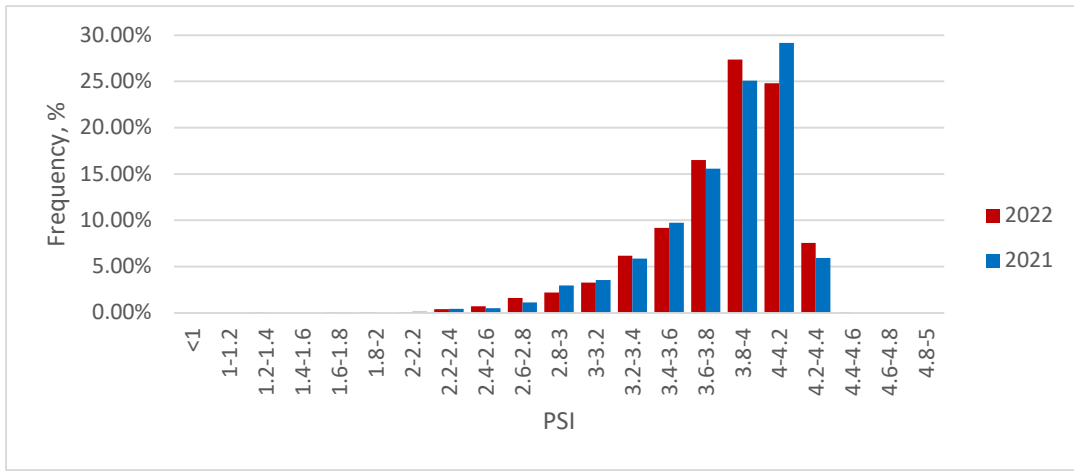
(Average PQI=3.936 for 5,640 lane miles)



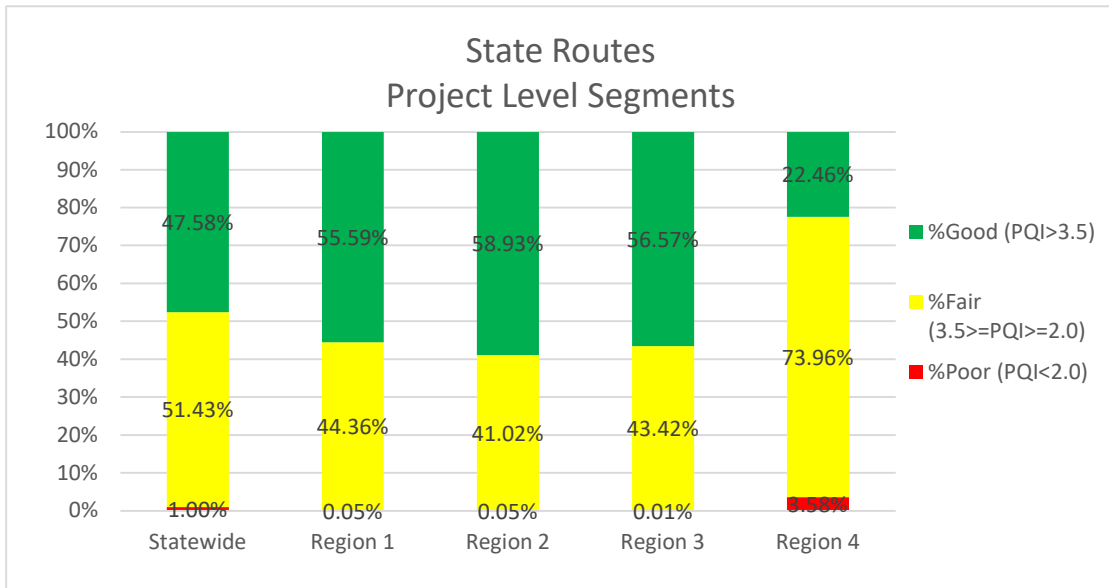
(Average PQI=3.947 for 1,201 centerline miles*)

Note:* The mileage provided in the bar chart "Interstate One Mile Segments" includes two directions.

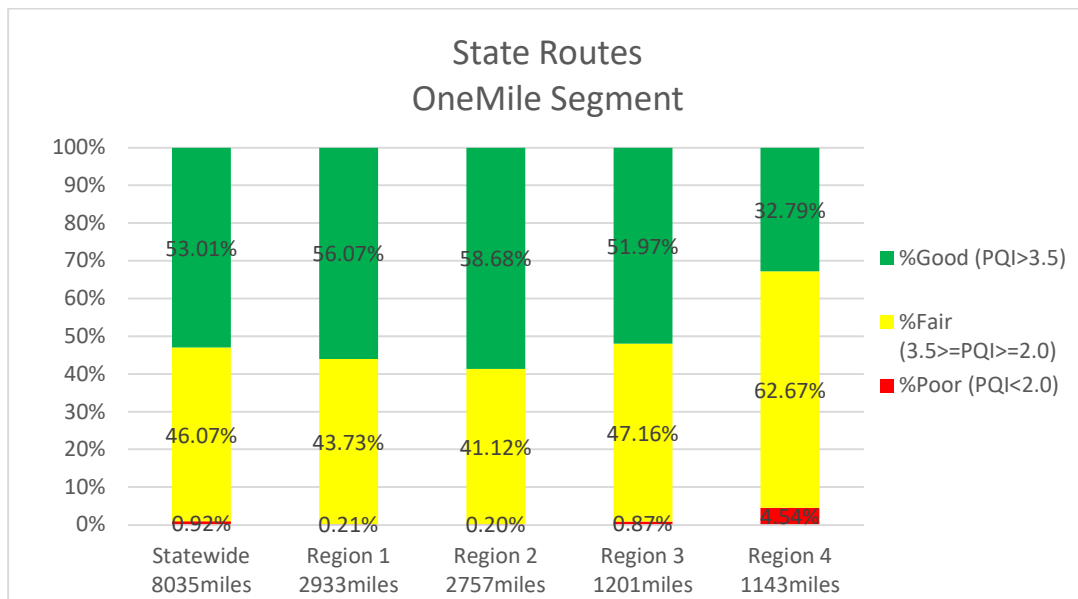
Distribution of Interstate Pavement Condition Indices - (One Mile Segments)



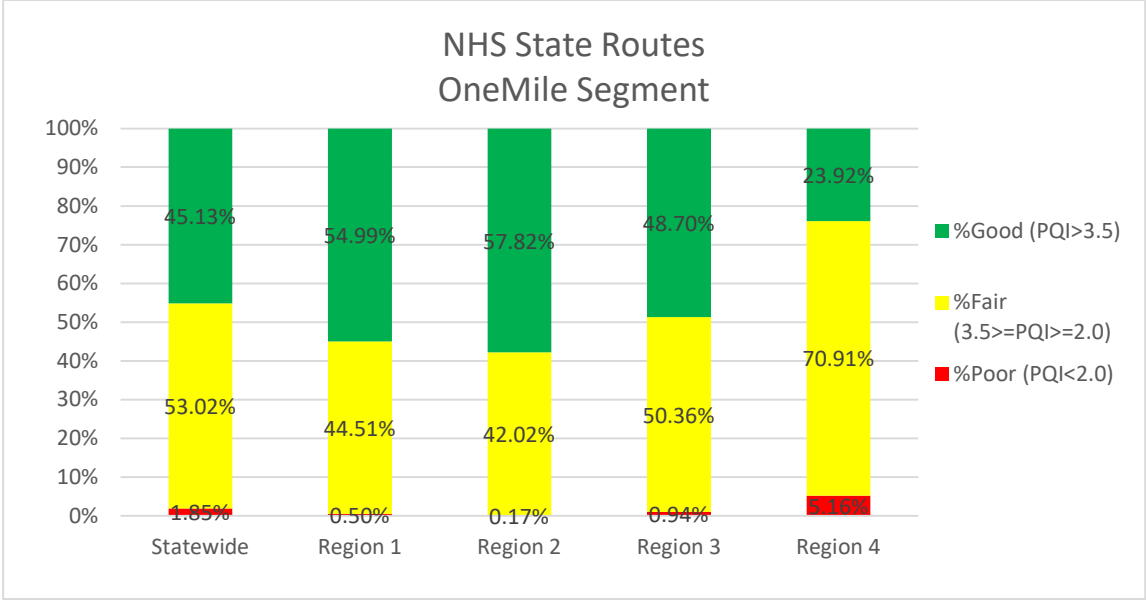
1.2 State Routes



(Average PQI=3.429 for 31,382 lane miles)

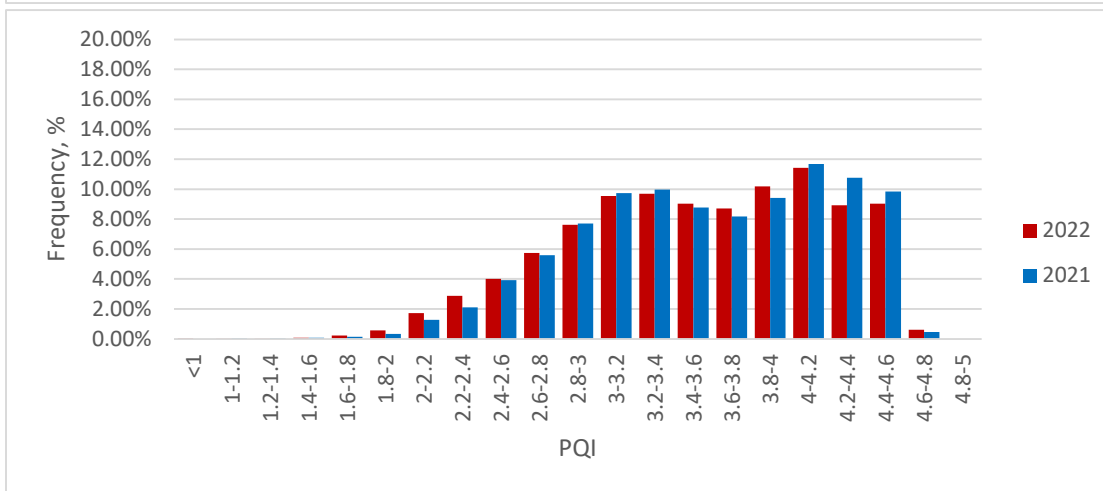
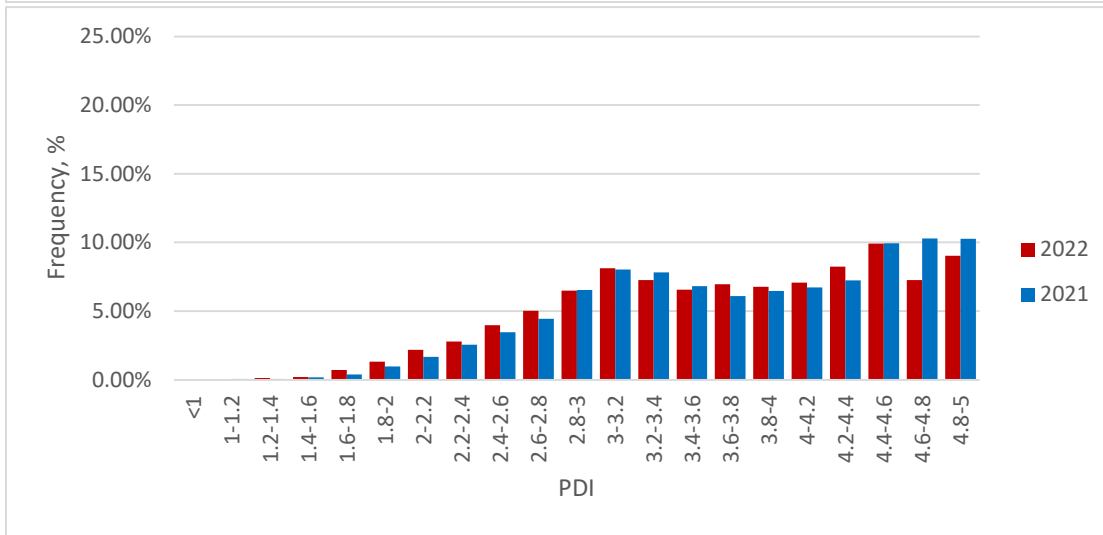
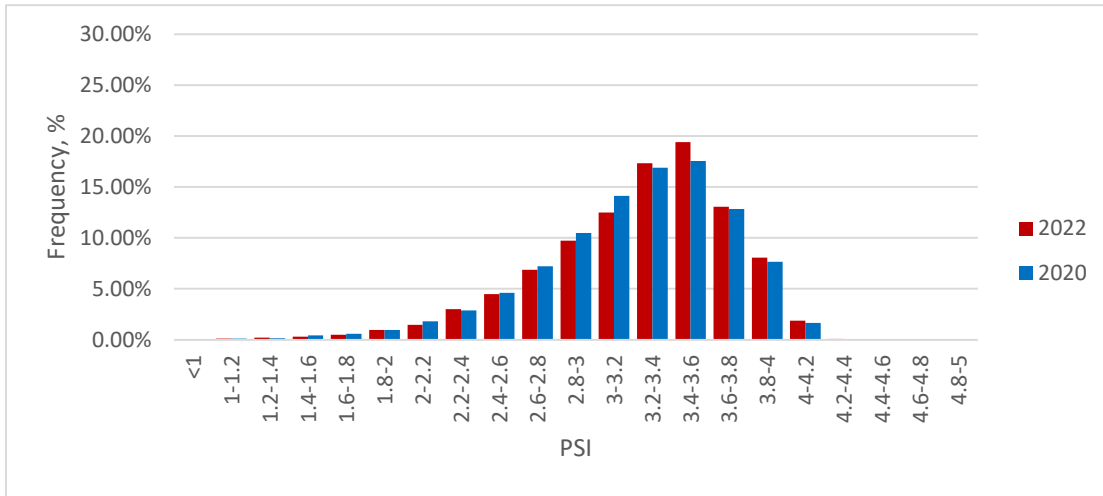


(Average PQI=3.523 for 8,035 centerline miles)



(Average PQI=3.393 for 3,653 centerline miles)

Distribution of State Route Pavement Condition Indices (One Mile Segments)

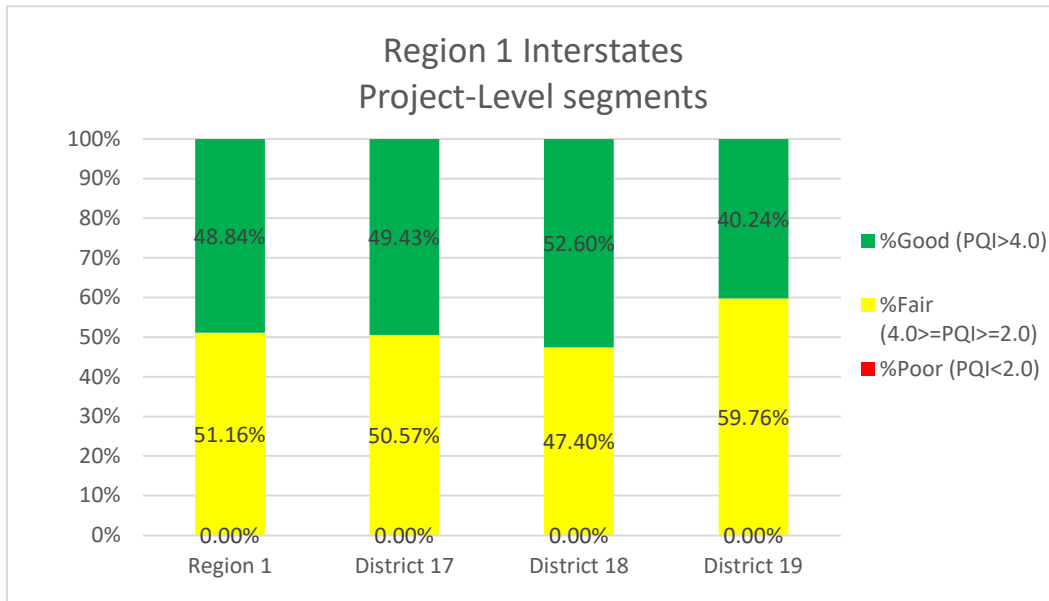


2. Region 1 Pavement Conditions *(Average of One Mile Segments)*

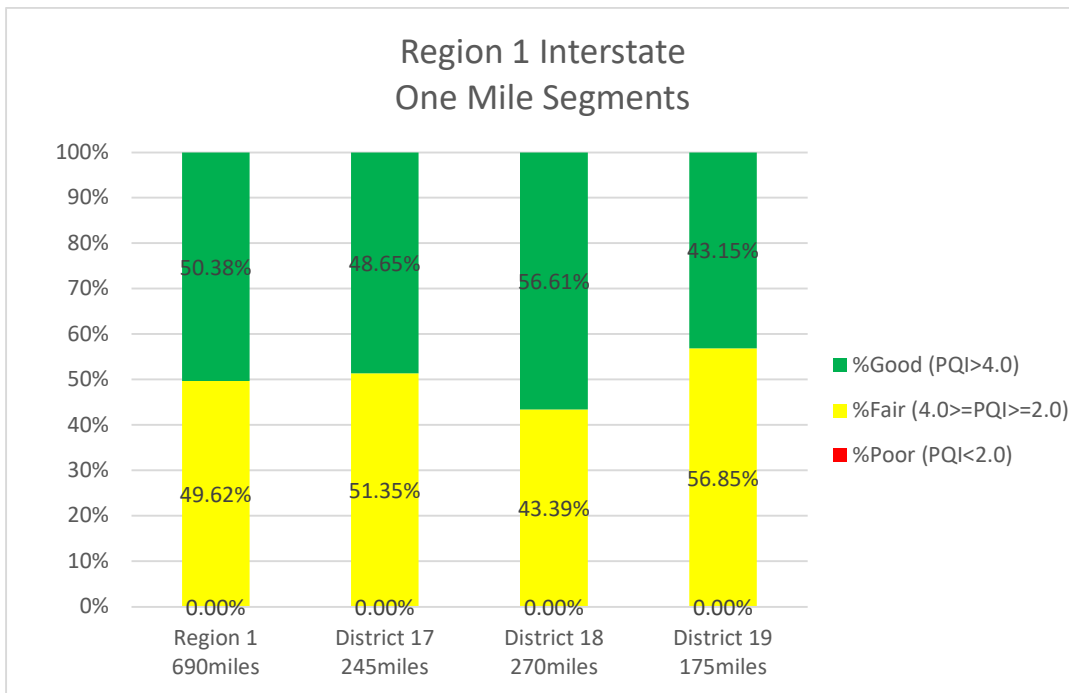
2022 Region 1 by District		Interstates				State Routes		
District	County	Average PSI	Average PDI	Average PQI	IRI<94 in./mi.*	Average PSI	Average PDI	Average PQI
17	10 CARTER	3.584	4.060	3.910	88.84%	3.446	4.078	3.865
17	30 GREENE	3.988	4.212	4.138	98.29%	3.312	3.959	3.740
17	32 HAMBLEN	4.081	3.859	3.923	99.50%	3.244	3.716	3.538
17	34 HANCOCK					2.833	3.427	3.214
17	37 HAWKINS					3.151	3.856	3.613
17	46 JOHNSON					3.259	3.892	3.671
17	82 SULLIVAN	3.879	4.008	3.959	94.68%	3.203	3.739	3.548
17	86 UNICOI	3.583	3.332	3.397	86.82%	3.230	3.908	3.679
17	90 WASHINGTON	3.885	4.490	4.297	95.28%	3.262	3.662	3.515
Average		3.854	3.978	3.932	94.27%	3.234	3.819	3.615
18	1 ANDERSON	3.795	4.202	4.071	93.81%	3.040	3.603	3.393
18	15 COCKE	3.729	4.000	3.906	89.09%	3.038	4.018	3.683
18	29 GRAINGER					3.299	3.710	3.574
18	45 JEFFERSON	3.894	4.387	4.224	93.98%	3.253	3.906	3.678
18	47 KNOX	3.674	4.032	3.911	84.25%	3.113	3.670	3.477
18	78 SEVIER	3.939	3.805	3.833	97.88%	3.153	4.208	3.849
18	87 UNION					2.940	3.572	3.357
Average		3.748	4.107	3.986	88.39%	3.126	3.829	3.586
19	5 BLOUNT	2.866	2.476	2.584	56.61%	3.027	3.716	3.473
19	7 CAMPBELL	3.455	3.429	3.417	79.30%	3.130	3.748	3.530
19	13 CLAIBORNE					3.214	3.301	3.263
19	53 LOUDON	3.848	4.169	4.060	93.49%	3.381	4.082	3.848
19	62 MONROE	4.051	4.734	4.516	100.00%	3.115	3.954	3.668
19	65 MORGAN					3.310	3.872	3.684
19	73 ROANE	3.789	3.943	3.887	92.10%	3.339	3.702	3.572
19	76 SCOTT					3.348	3.249	3.260
Average		3.680	3.840	3.777	87.51%	3.210	3.733	3.550
Region 1		3.768	3.993	3.914	90.26%	3.192	3.796	3.586

Note: * Percentage of IRI<=94 in./mi. is calculated based on unit length of 0.1 mile.

2.1 Region 1 Interstates



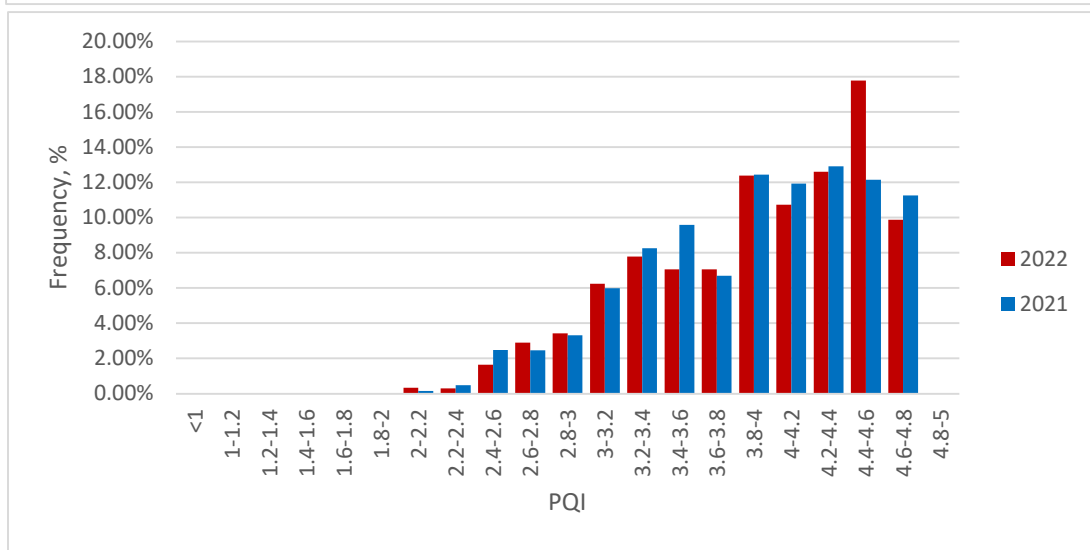
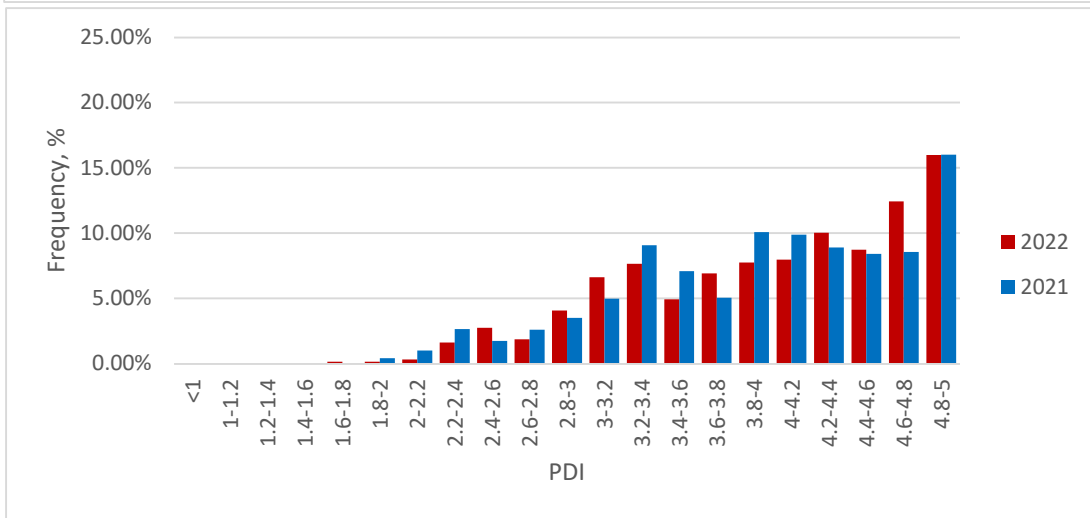
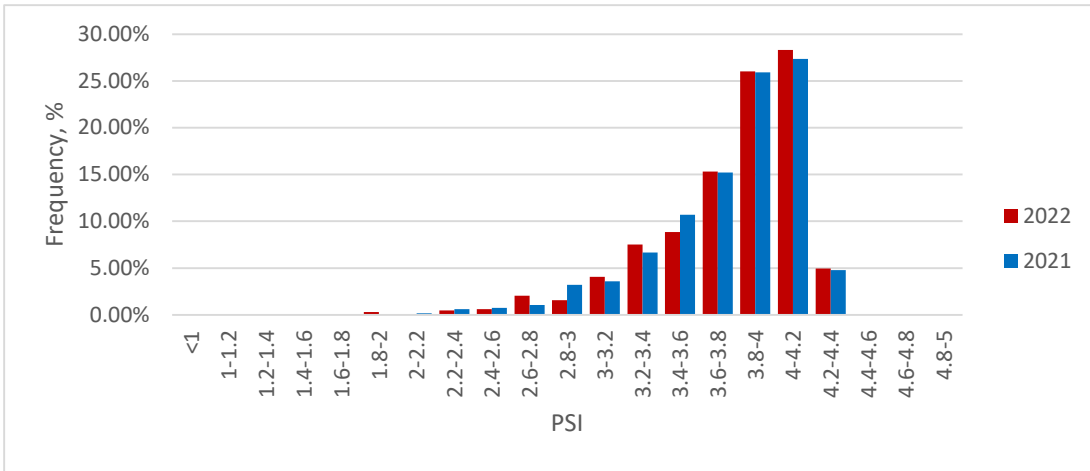
(Average PQI=3.931 for 1,561 lane miles)



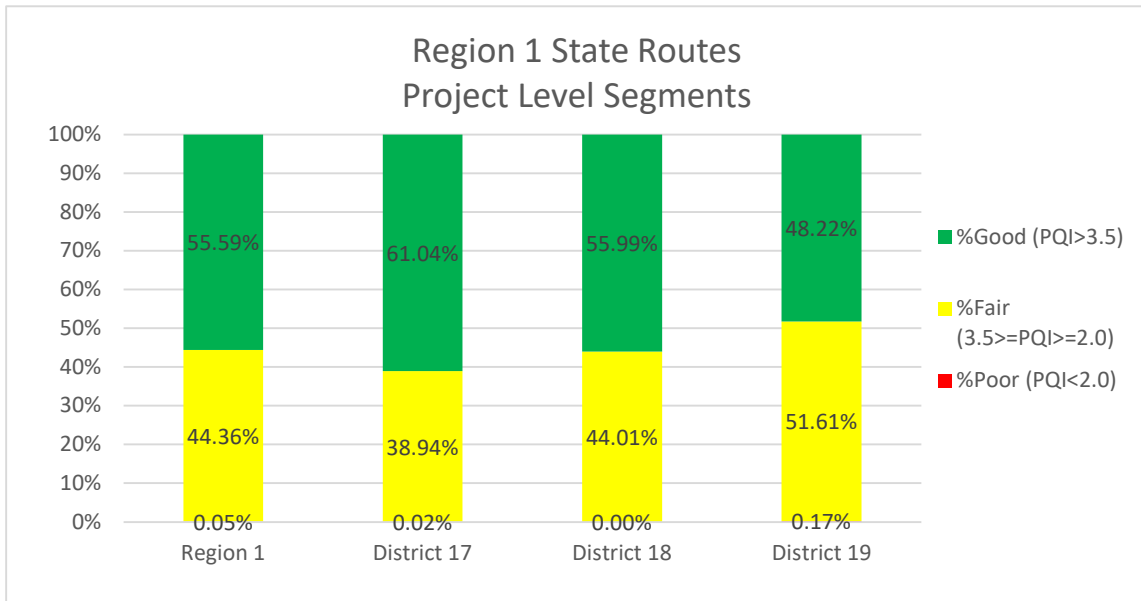
(Average PQI= 3.914 for 345 centerline miles *)

Note:* The mileage provided in the bar chart “Region 1 Interstate One Mile Segments” includes two directions.

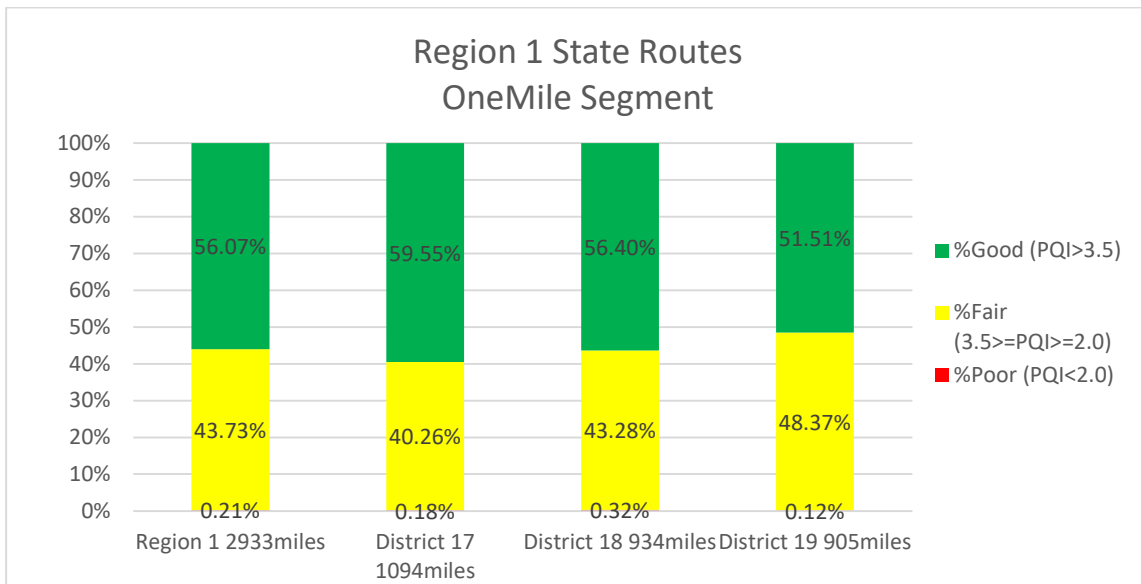
Distribution of Pavement Condition Indices- Region 1 Interstates (One Mile Segments)



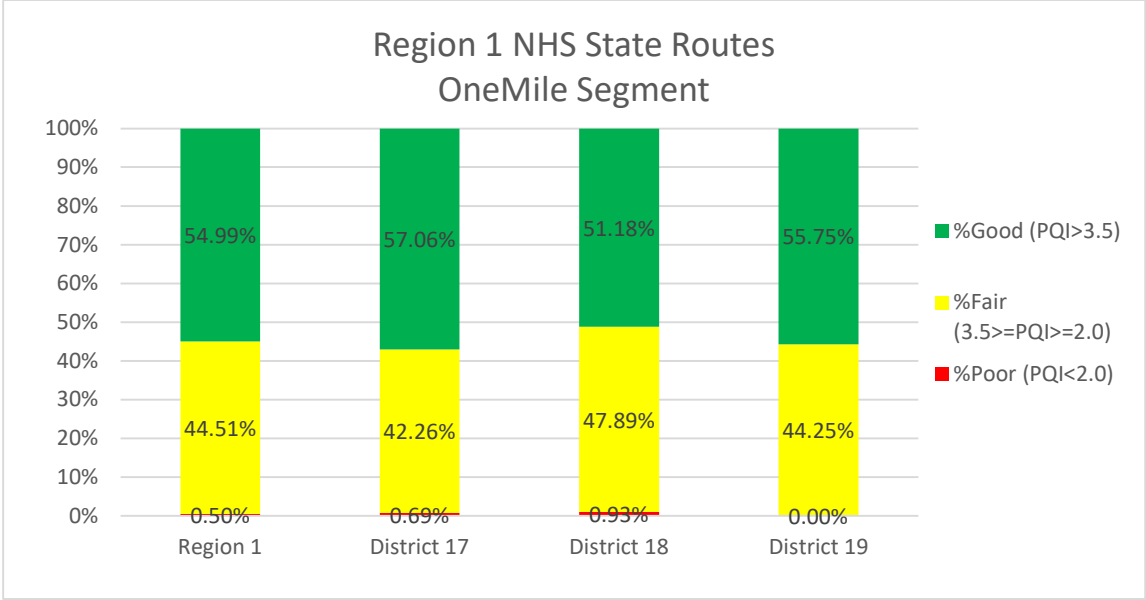
2.2 Region 1 State Routes



(Average PQI=3.592 for 7,394 lane miles)

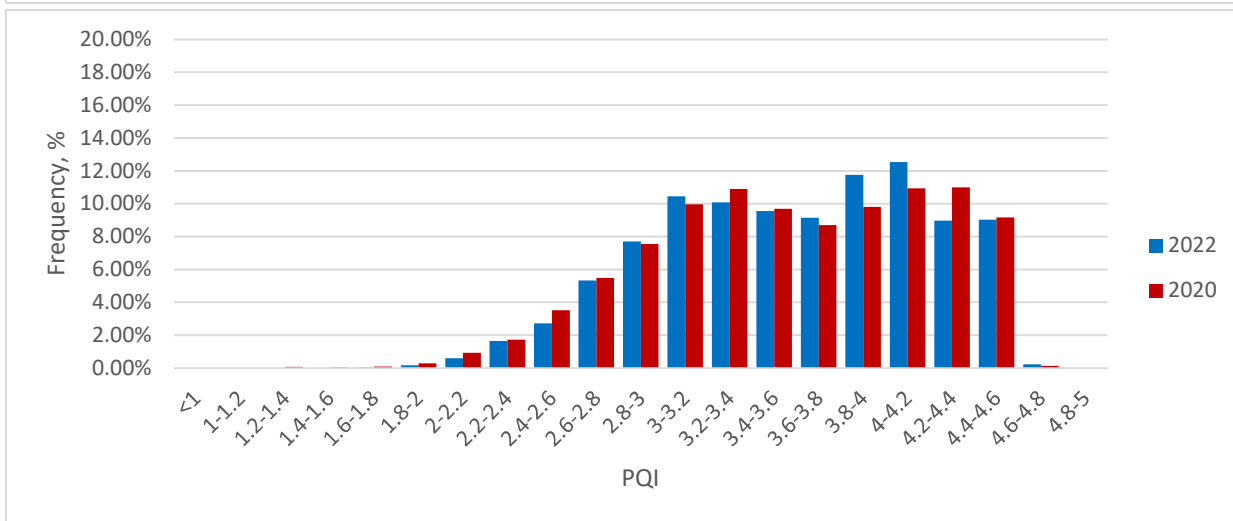
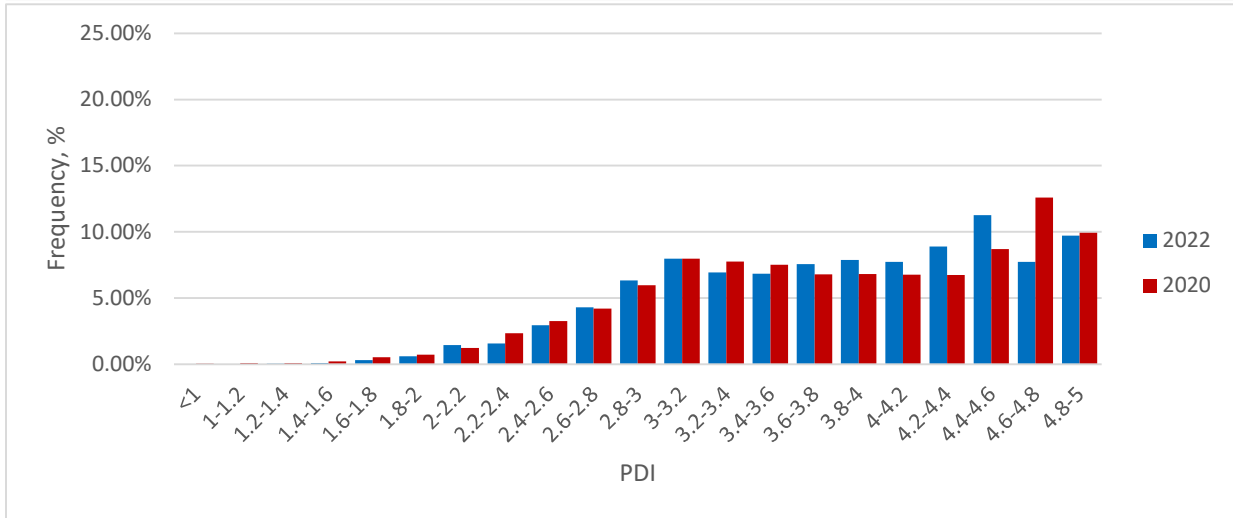
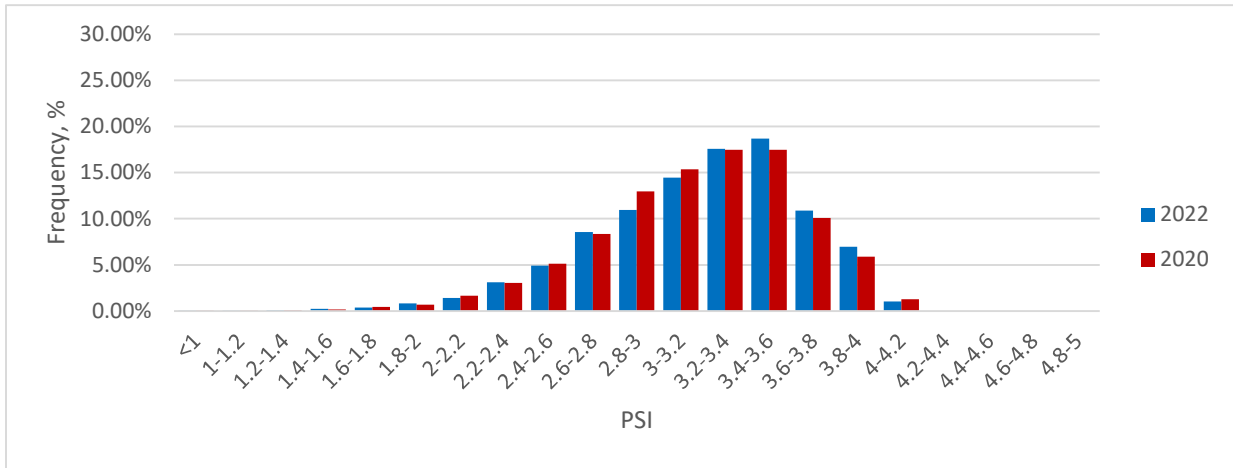


(Average PQI=3.586 for 2933 centerline miles mile of State Routes)



(Average PQI=3.582 for 794 centerline miles mile of State Routes)

Distribution of Pavement Condition Indices- Region 1 State Routes (One Mile Segments)

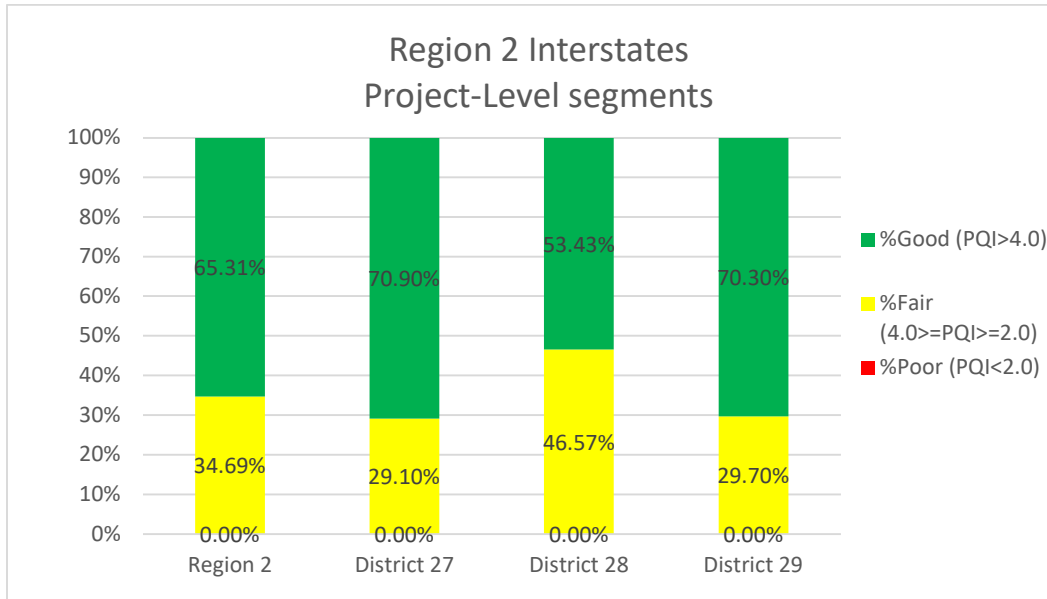


3. Region 2 Pavement Conditions *(Average of One Mile Segments)*

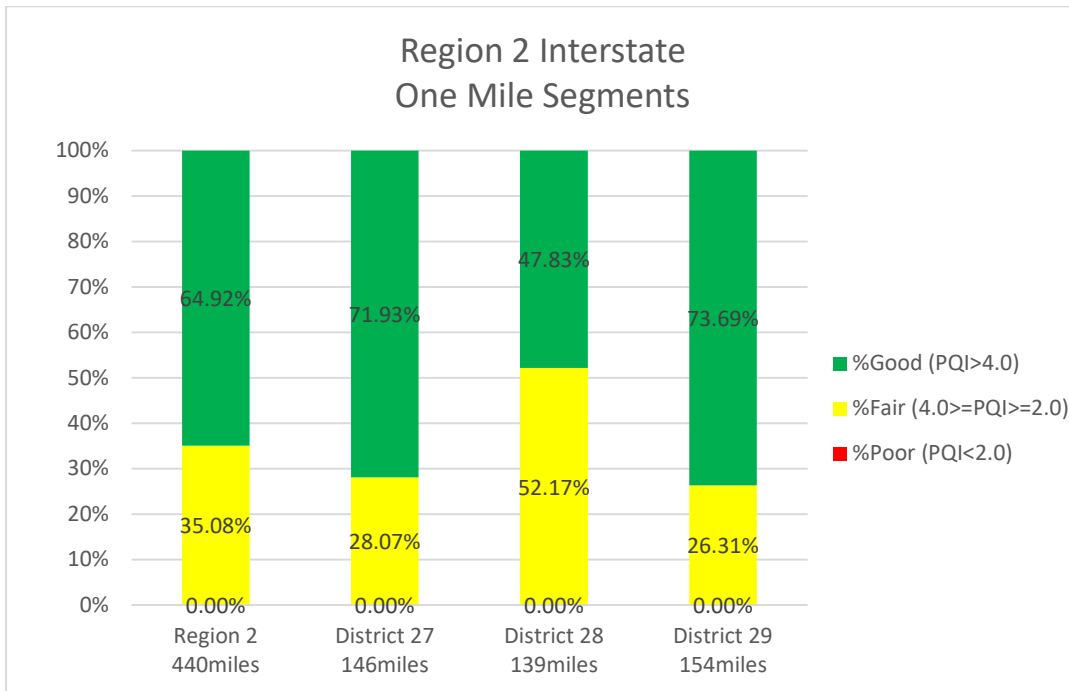
2022 Region 2 by District		Interstates				State Routes		
District	County	Average PSI	Average PDI	Average PQI	IRI<94 In./mi.*	Average PSI	Average PDI	Average PQI
27	14 CLAY					3.269	3.904	3.690
27	18 CUMBERLAND	4.055	4.287	4.209	99.17%	3.456	3.472	3.451
27	21 DEKALB					3.267	3.793	3.614
27	25 FENTRESS					3.317	4.085	3.823
27	44 JACKSON					3.200	4.007	3.733
27	67 OVERTON					3.342	4.129	3.858
27	69 PICKETT					3.355	4.230	3.938
27	71 PUTNAM	4.138	4.209	4.179	99.46%	3.281	3.865	3.667
27	93 WHITE					3.489	4.117	3.910
Average		4.097	4.247	4.194	99.32%	3.332	3.921	3.719
28	4 BLEDSOE					3.404	3.925	3.750
28	8 CANNON					3.342	3.651	3.543
28	16 COFFEE	4.158	3.982	4.029	99.34%	3.582	3.426	3.456
28	26 FRANKLIN					3.378	3.557	3.507
28	31 GRUNDY	4.123	3.902	3.963	97.95%	3.430	3.724	3.619
28	58 MARION	3.994	3.883	3.909	97.67%	3.196	3.679	3.513
28	77 SEQUATCHIE					3.451	3.757	3.647
28	88 VAN BUREN					3.292	3.950	3.730
28	89 WARREN					3.327	3.546	3.464
Average		4.079	3.928	3.967	98.42%	3.366	3.653	3.552
29	6 BRADLEY	4.050	4.623	4.438	99.46%	3.264	3.750	3.588
29	33 HAMILTON	3.537	4.236	4.007	81.26%	3.068	3.691	3.478
29	54 MCMINN	4.041	4.741	4.517	99.80%	3.276	3.723	3.564
29	61 MEIGS					3.298	3.372	3.330
29	70 POLK					3.229	3.843	3.641
29	72 RHEA					3.423	3.966	3.783
Average		3.828	4.496	4.280	91.83%	3.227	3.730	3.557
Region 2		3.997	4.234	4.152	96.41%	3.316	3.771	3.614

Note: * Percentage of IRI<=94 in./mi. is calculated based on unit length of 0.1 mile.

3.1 Region 2 Interstates



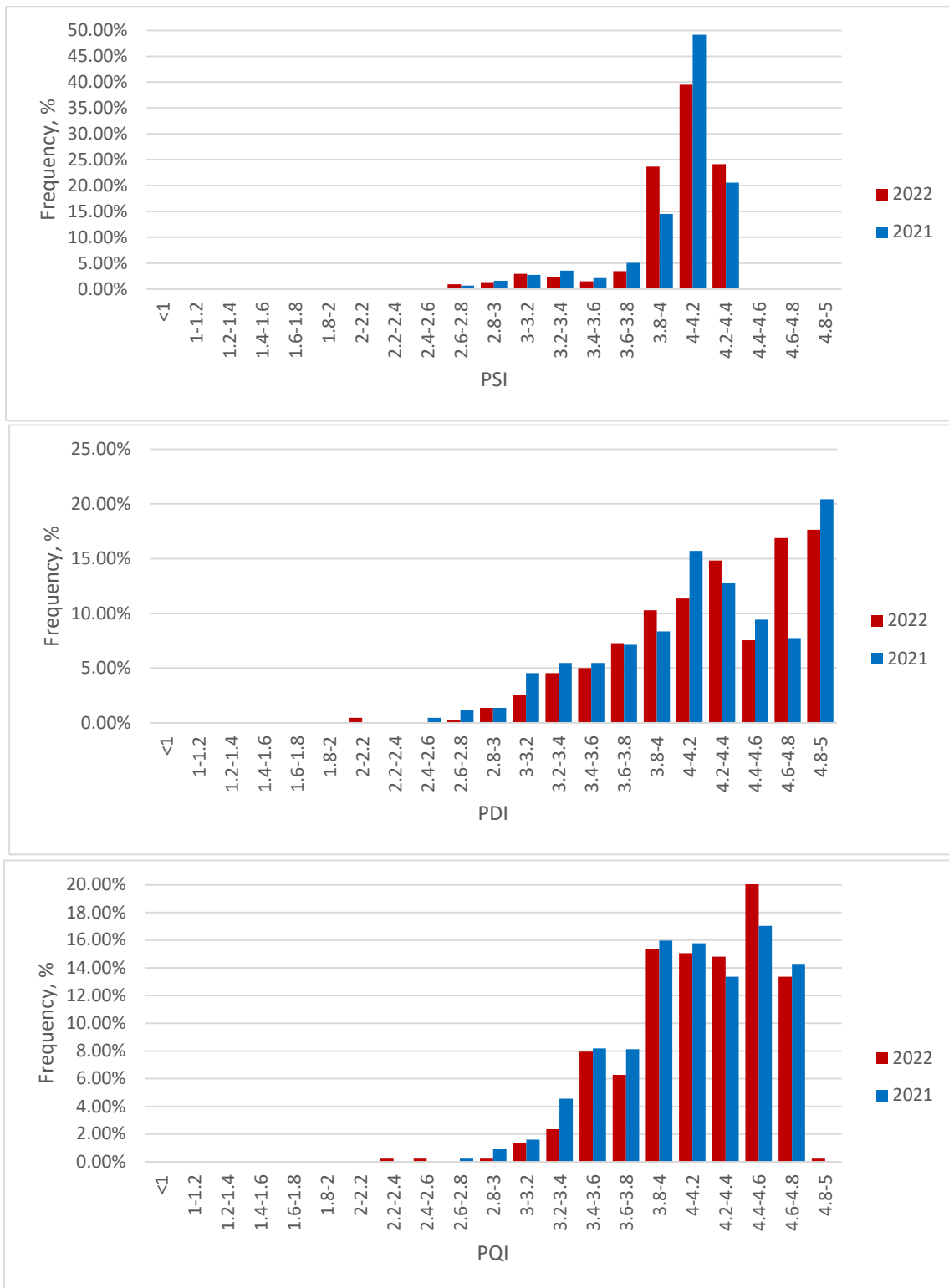
(Average PQI=4.130 for 952 lane miles)



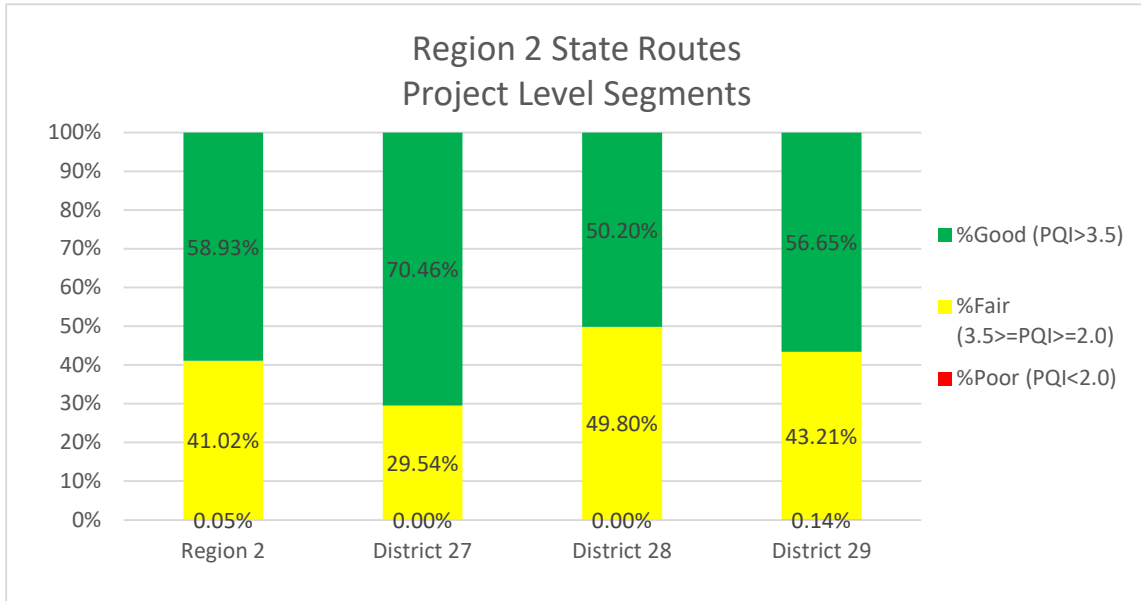
(Average PQI=4.152 for 220 centerline miles *)

Note:* The mileage provided in the bar chart “Region 2 Interstate One Mile Segments” includes two directions.

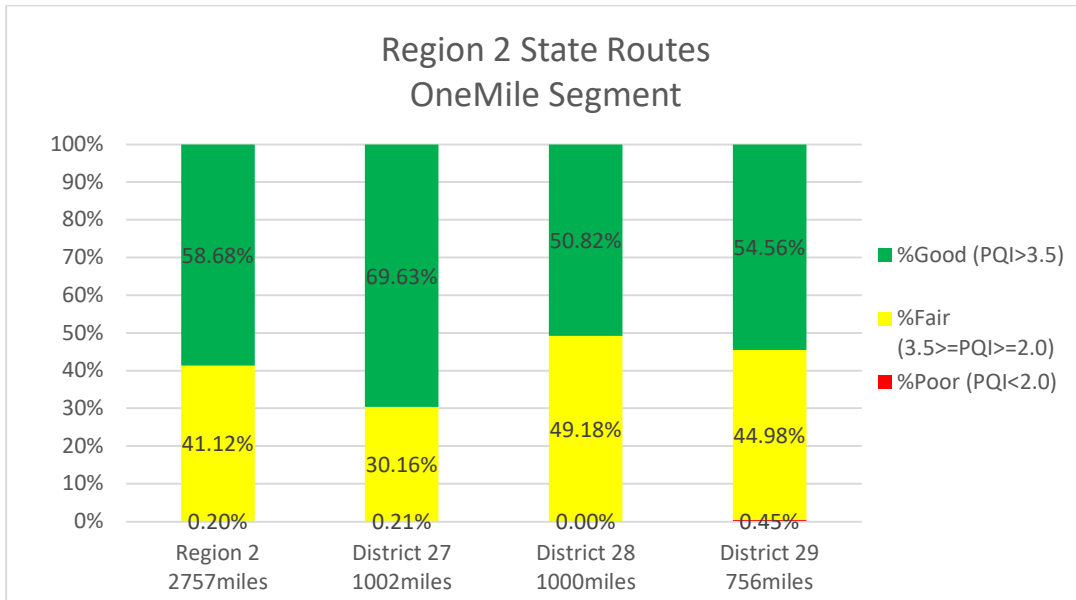
Distribution of Pavement Condition Indices- Region 2 Interstates (One Mile Segments)



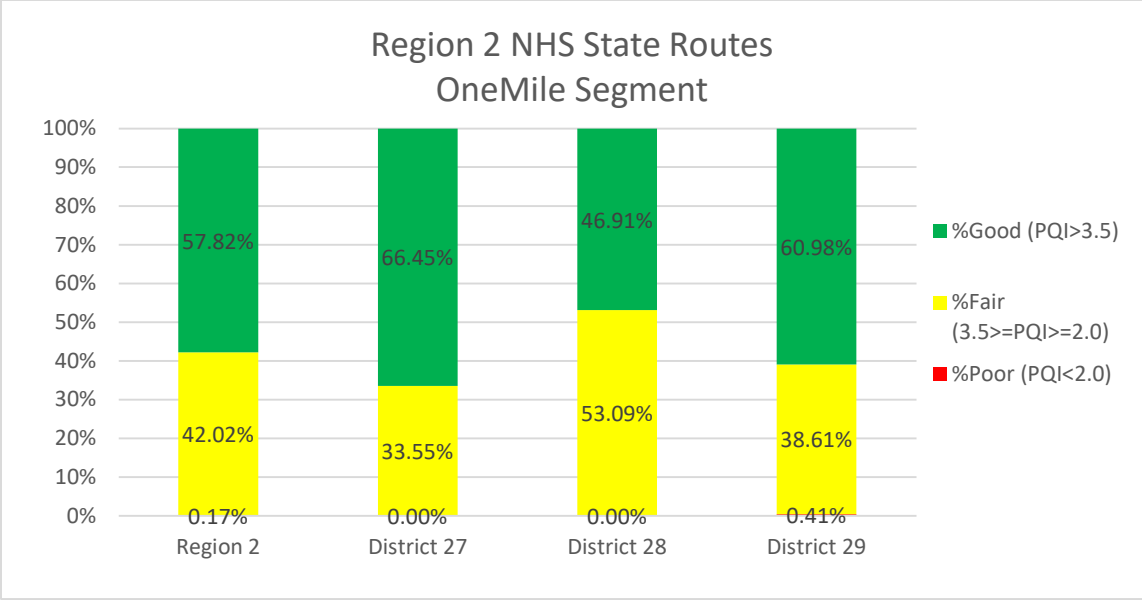
3.2 Region 2 State Routes



(Average PQI=3.615 for 6,678 lane miles)

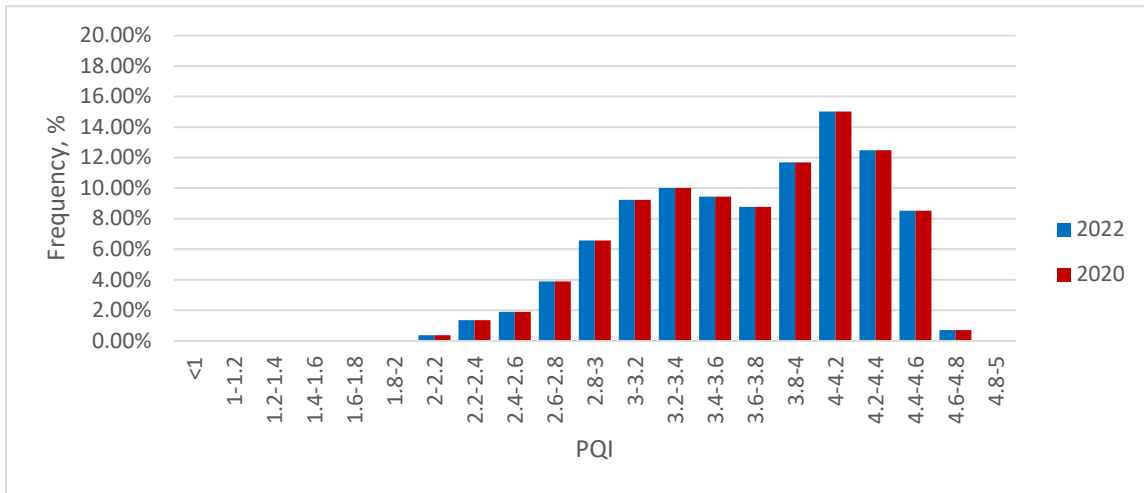
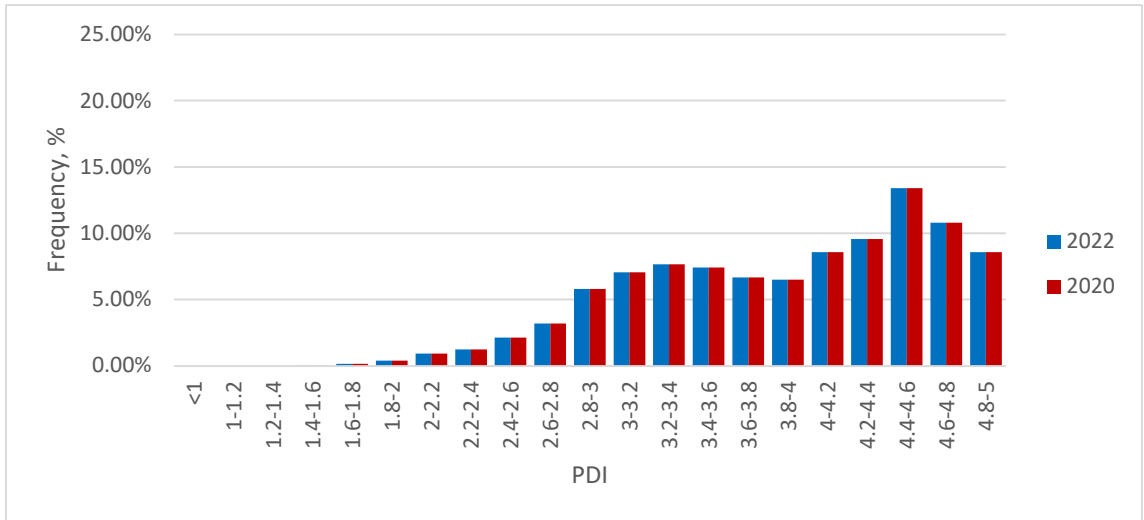
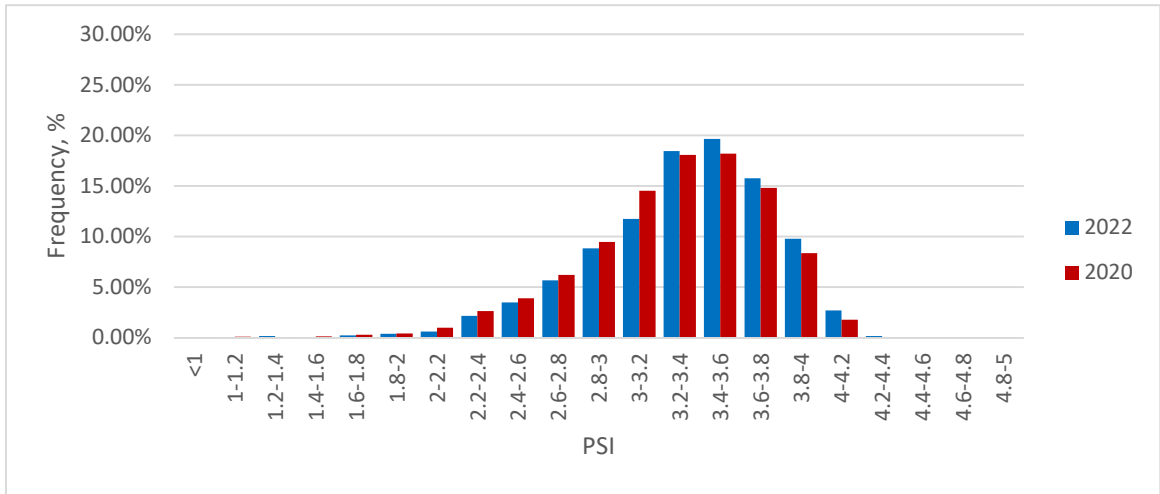


(Average PQI=3.614 for 2,757 centerline miles mile of State Routes)



(Average PQI=3.625 for 751 centerline miles mile of NHS State Routes)

Distribution of Pavement Condition Indices- Region 2 State Routes (One Mile Segments)

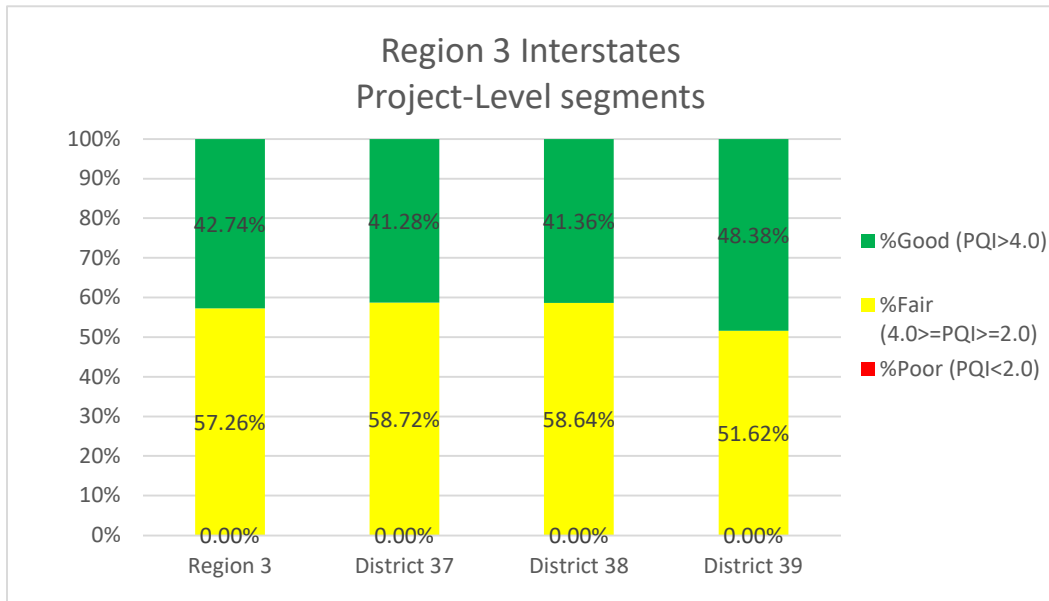


4. Region 3 Pavement Conditions (Average of One Mile Segments)

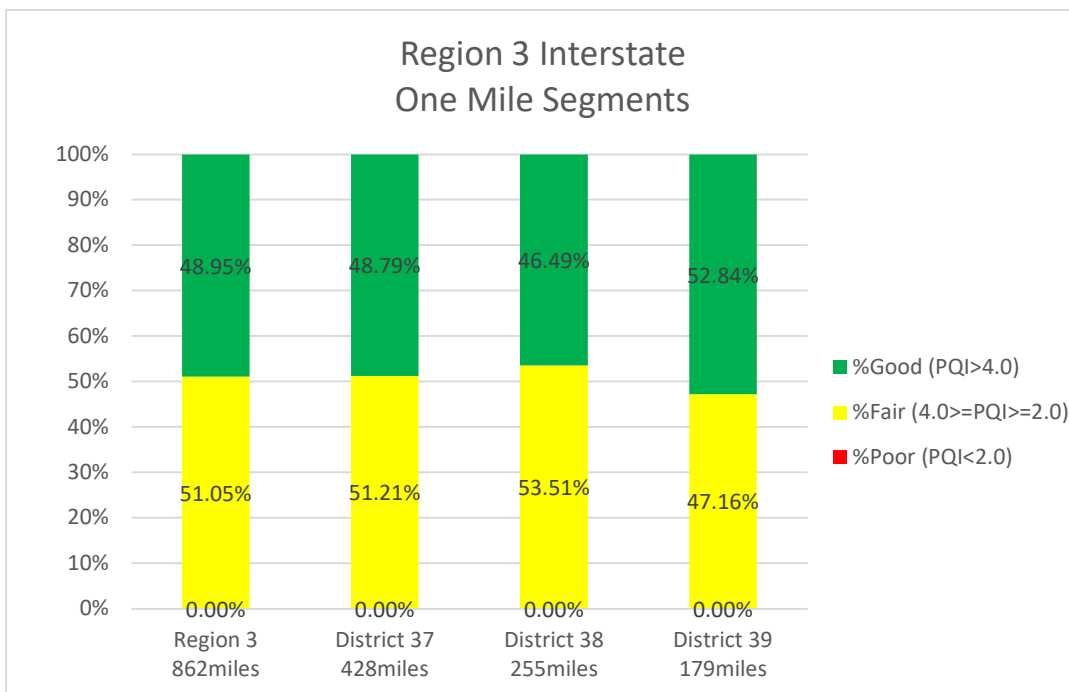
2022 Region 3 by District		Interstates				NHS State Routes		
District	County	Average PSI	Average PDI	Average PQI	IRI< 94in./mi.*	Average PSI	Average PDI	Average PQI
37	19 DAVIDSON	3.504	3.969	3.810	80.83%	2.915	3.274	3.143
37	56 MACON					3.414	3.580	3.520
37	80 SMITH	3.943	4.204	4.108	98.26%	3.527	4.855	4.410
37	83 SUMNER	3.872	4.652	4.405	89.02%	3.370	3.498	3.431
37	85 TROUSDALE					3.657	4.095	3.955
37	94 WILLIAMSON	3.700	4.209	4.042	88.45%	3.159	3.601	3.443
37	95 WILSON	3.728	3.560	3.597	93.44%	3.329	3.759	3.613
Average		3.648	4.005	3.881	86.99%	3.159	3.515	3.384
38	11 CHEATHAM	3.854	4.022	3.967	96.88%			
38	22 DICKSON	3.946	4.118	4.048	96.64%	3.578	3.928	3.809
38	41 HICKMAN	3.893	4.339	4.189	92.39%	3.496	4.791	4.359
38	42 HOUSTON							
38	43 HUMPHREYS	3.695	3.467	3.530	90.28%			
38	60 MAURY	3.756	3.829	3.803	90.95%	3.511	3.771	3.673
38	63 MONTGOMERY	3.971	3.483	3.621	97.96%	3.492	3.988	3.822
38	74 ROBERTSON	3.879	4.369	4.212	98.42%	3.488	3.876	3.743
38	81 STEWART					3.619	3.995	3.870
Average		3.865	3.995	3.946	95.21%	3.522	3.923	3.785
39	2 BEDFORD	3.605	3.965	3.850	88.89%	3.578	4.089	3.916
39	28 GILES	3.766	3.848	3.805	92.74%	3.349	3.538	3.460
39	50 LAWRENCE					3.593	3.786	3.710
39	51 LEWIS					3.590	3.860	3.764
39	52 LINCOLN					3.549	4.016	3.850
39	59 MARSHALL	3.667	3.368	3.444	84.37%			
39	64 MOORE					3.594	3.818	3.734
39	68 PERRY					3.316	3.918	3.717
39	75 RUTHERFORD	3.866	4.305	4.162	94.09%	3.372	3.726	3.597
39	91 WAYNE					3.331	3.561	3.461
Average		3.811	4.055	3.969	92.34%	3.479	3.829	3.702
Region 3		3.746	4.012	3.918	90.53%	3.331	3.692	3.561

Note: * Percentage of IRI<=94 in./mi. is calculated based on unit length of 0.1 mile.

4.1 Region 3 Interstates



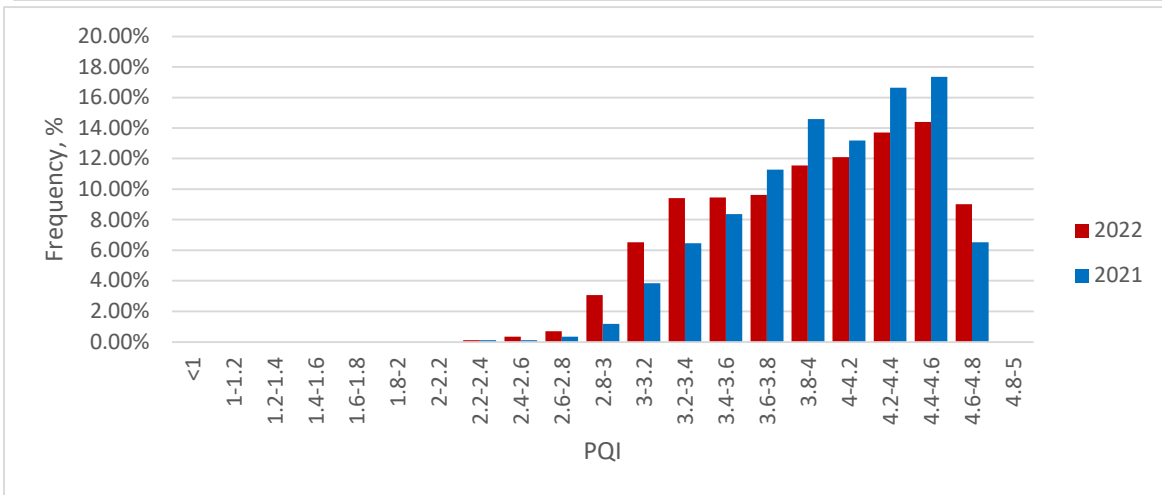
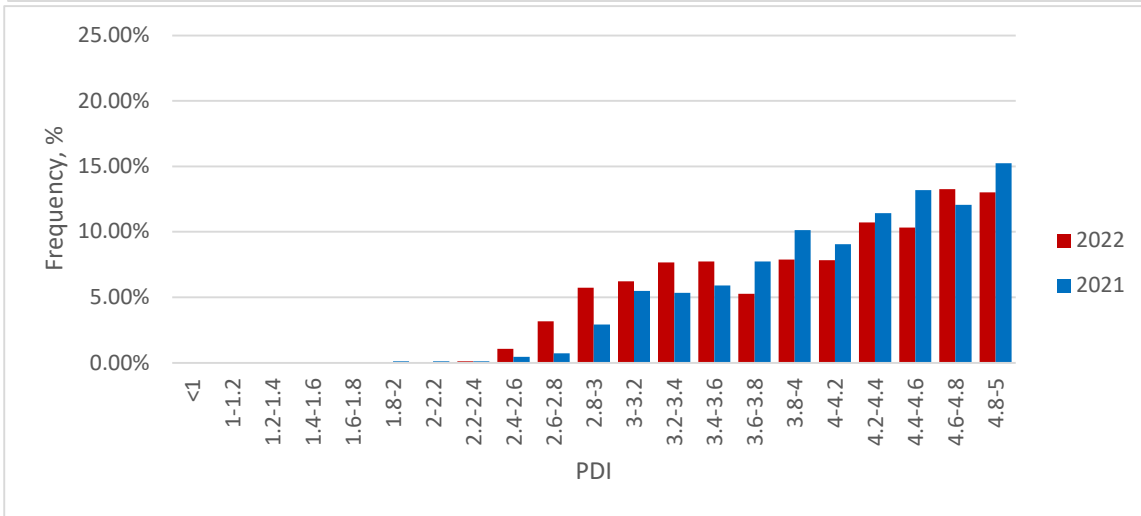
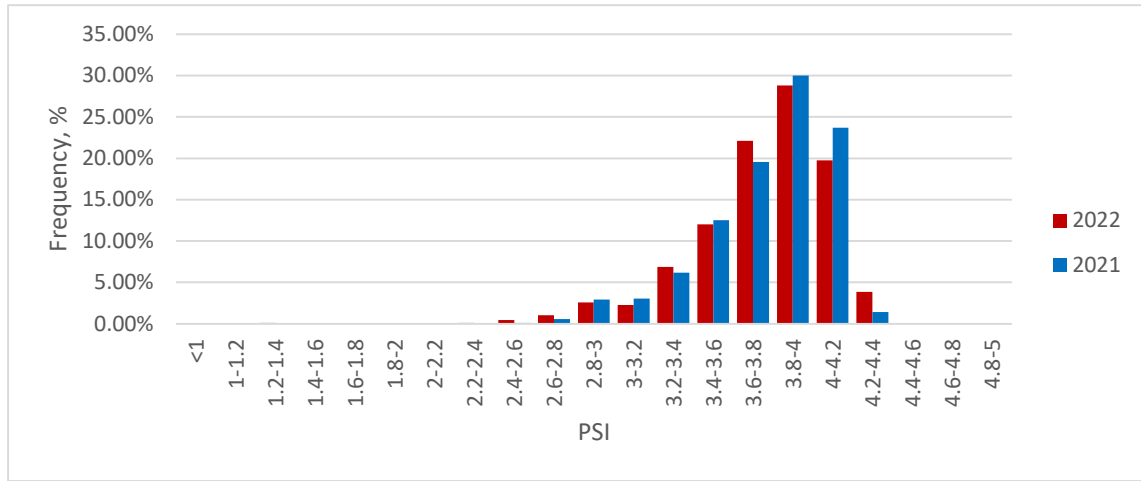
(Average PQI=3.913 for 2,144 lane miles)



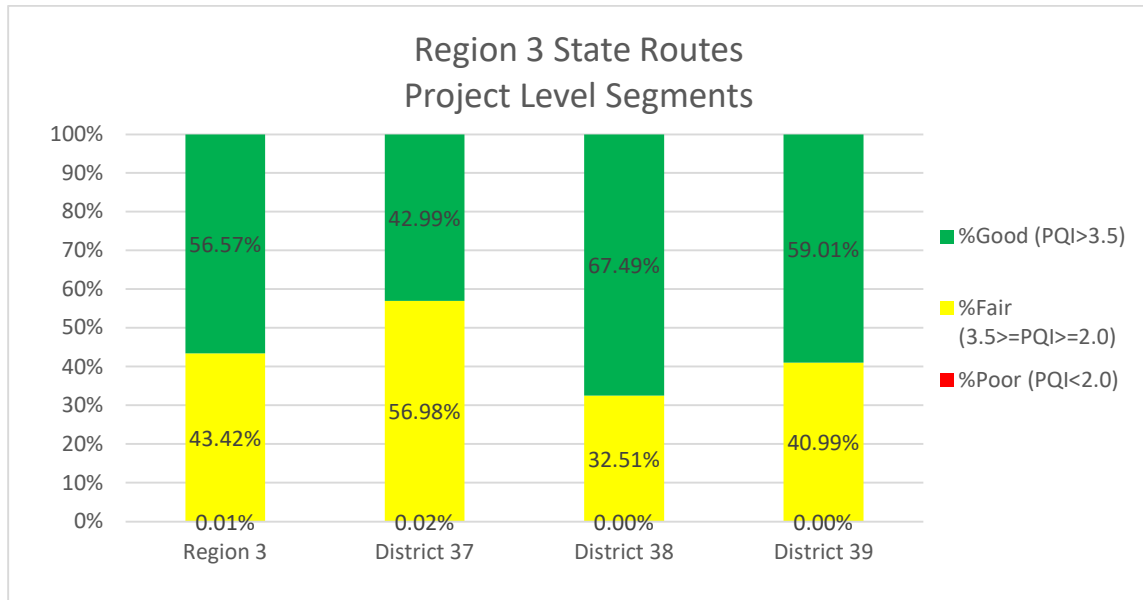
(Average PQI=3.918 for 431 centerline mile *)

Note:* The mileage provided in the bar chart “Region 3 Interstate One Mile Segments” includes two directions.

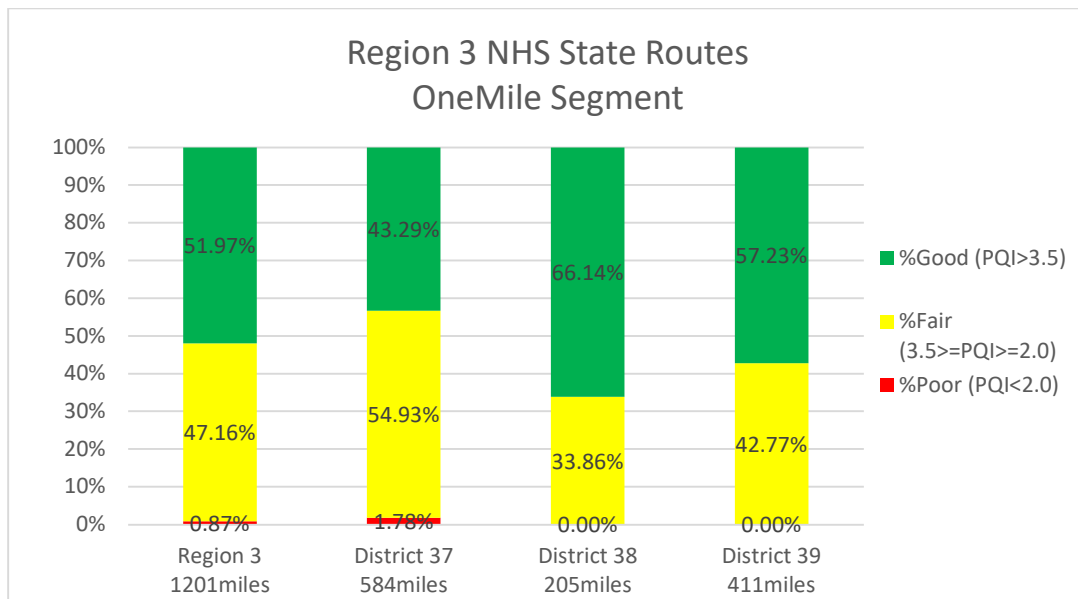
Distribution of Pavement Condition Indices- Region 3 Interstates, One Mile Segments



4.2 Region 3 State Routes

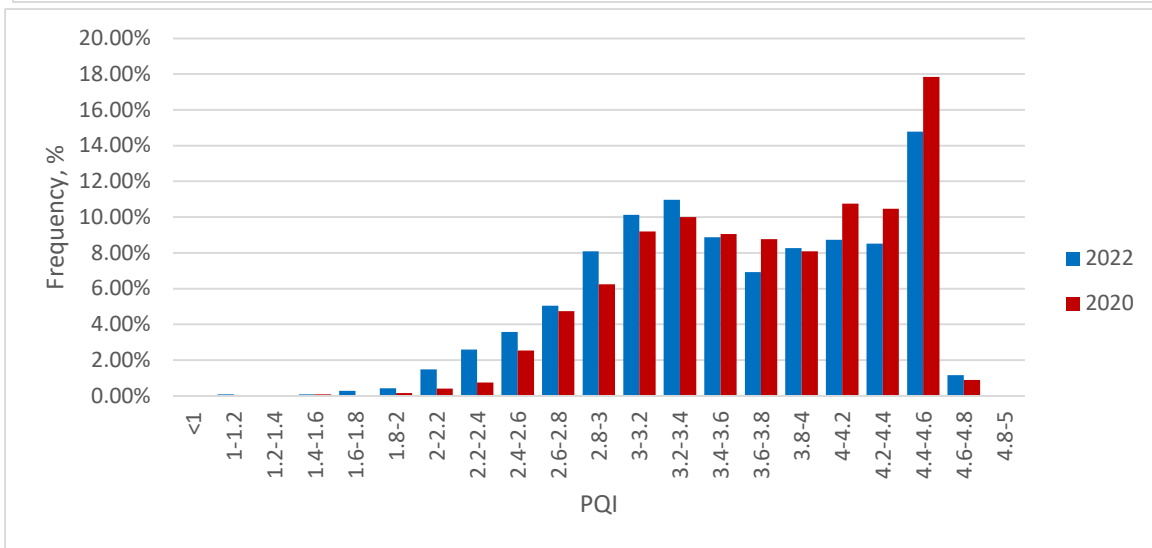
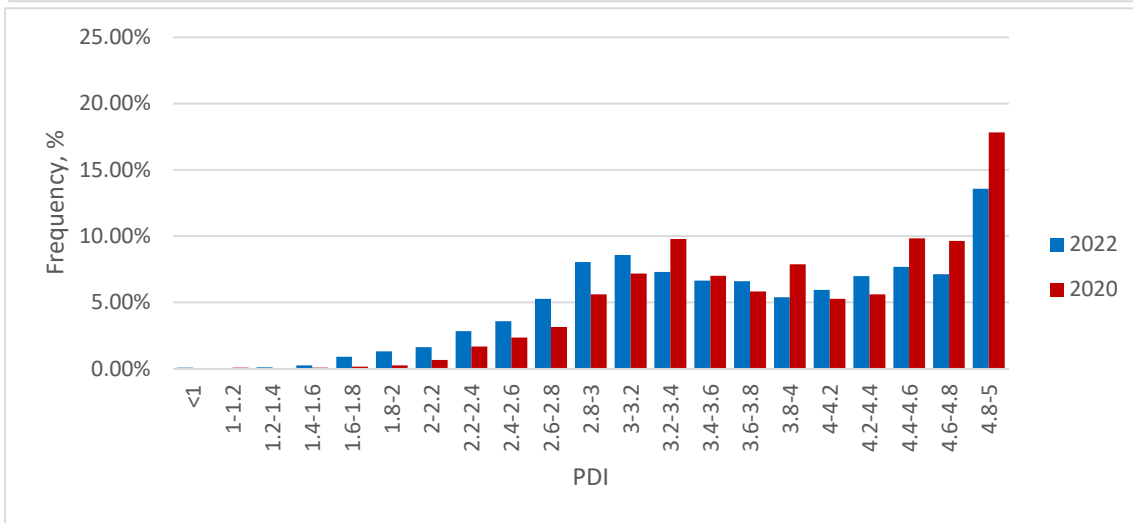
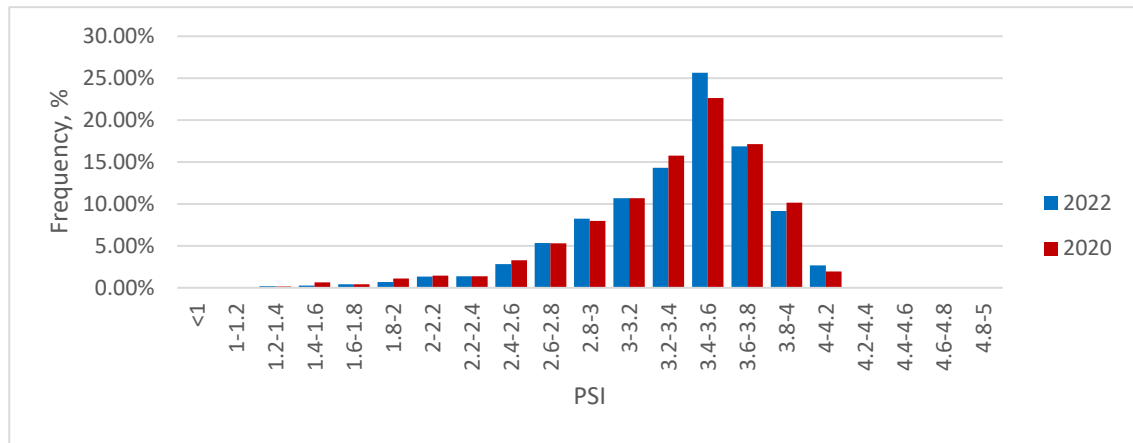


(Average PQI=3.637 for 8,765 lane miles)



(Average PQI=3.561 for 1,201 centerline miles)

Distribution of Pavement Condition Indices- Region 3 NHS State Routes (One Mile Segments)

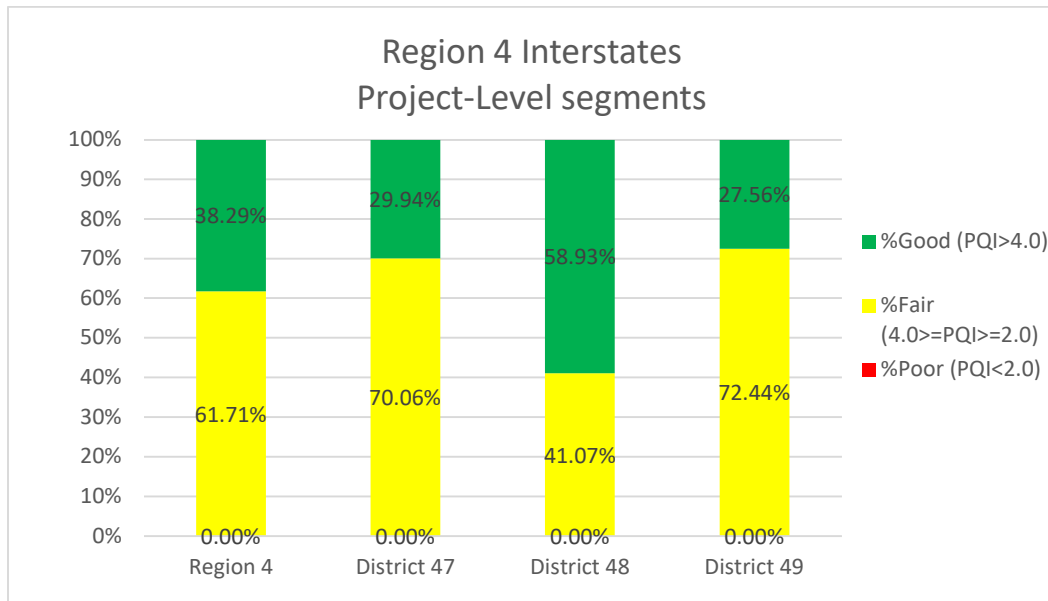


5. Region 4 Pavement Conditions *(Average of One Mile Segments)*

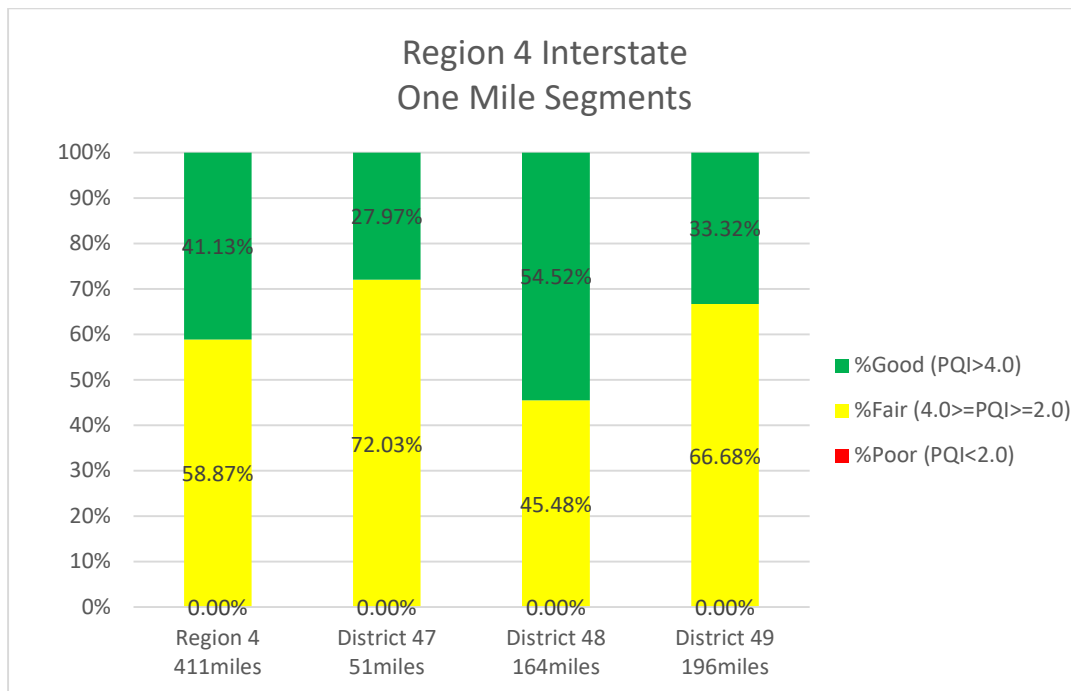
2022 Region 4 by District		Interstates				NHS State Routes		
District	County	Average PSI	Average PDI	Average PQI	IRI<94 In./mi.*	Average PSI	Average PDI	Average PQI
47	3 BENTON	3.699	3.536	3.576	88.84%	3.325	2.893	3.006
47	9 CARROLL	4.115	4.385	4.300	100.00%	2.759	2.716	2.686
47	23 DYER	3.636	3.222	3.281	89.22%	3.059	3.336	3.213
47	27 GIBSON					2.995	3.132	3.080
47	40 HENRY					3.207	3.284	3.227
47	48 LAKE					3.275	4.533	4.111
47	66 OBION					3.093	3.260	3.184
47	92 WEAKLEY					3.074	2.822	2.875
Average		3.670	3.361	3.409	89.37%	3.079	3.165	3.111
48	12 CHESTER					3.559	3.784	3.696
48	17 CROCKETT					3.306	3.532	3.429
48	20 DECATUR	4.127	4.882	4.641	100.00%	3.045	2.276	2.467
48	35 HARDEMAN					2.896	3.336	3.180
48	36 HARDIN					3.044	3.043	3.026
48	38 HAYWOOD	3.899	4.243	4.127	95.61%	2.830	3.311	3.150
48	39 HENDERSON	3.833	3.911	3.880	95.13%	3.200	3.640	3.487
48	55 MCNAIRY					3.118	3.105	3.089
48	57 MADISON	3.503	4.382	4.085	76.29%	2.894	2.900	2.881
Average		3.760	4.235	4.074	89.20%	3.078	3.156	3.109
49	24 FAYETTE	3.744	4.374	4.169	90.66%	3.274	3.525	3.415
49	49 LAUDERDALE					3.369	3.341	3.318
49	79 SHELBY	3.444	3.738	3.635	67.76%	2.593	3.169	2.962
49	84 TIPTON					3.098	3.099	3.074
Average		3.516	3.891	3.763	73.20%	2.858	3.243	3.095
Region 4		3.633	3.963	3.844	81.59%	3.006	3.188	3.105

Note: * Percentage of IRI<=94 in./mi. is calculated based on unit length of 0.1 mile.

5.1 Region 4 Interstates



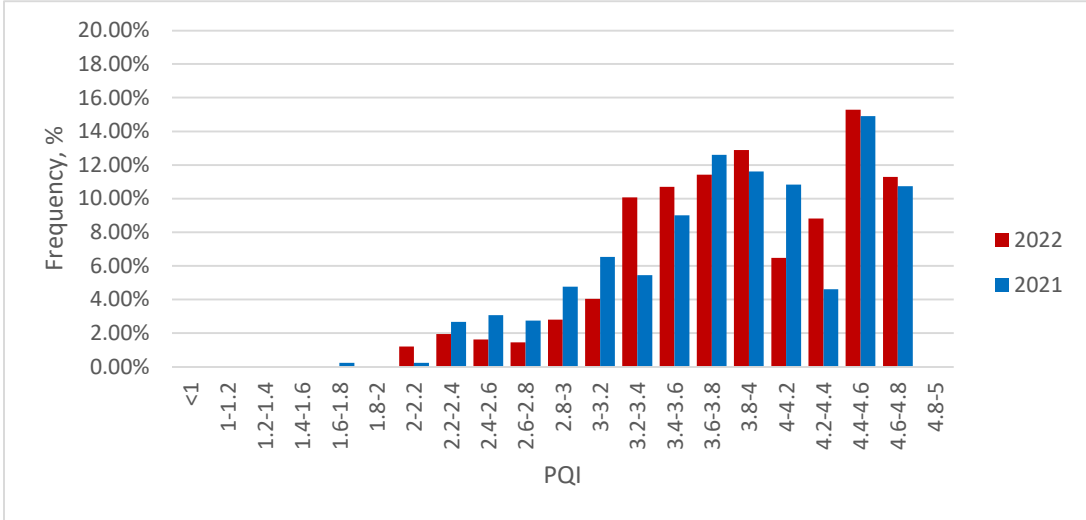
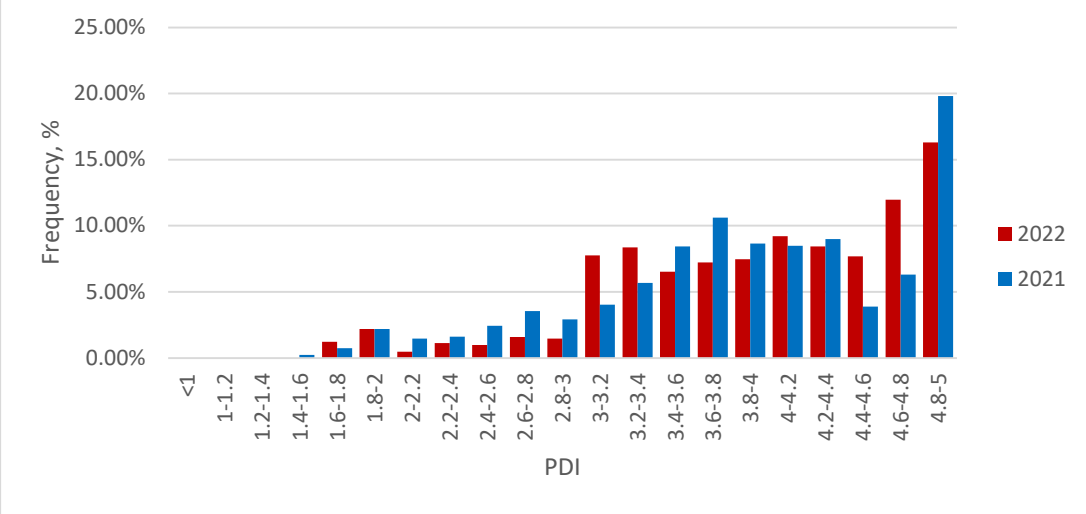
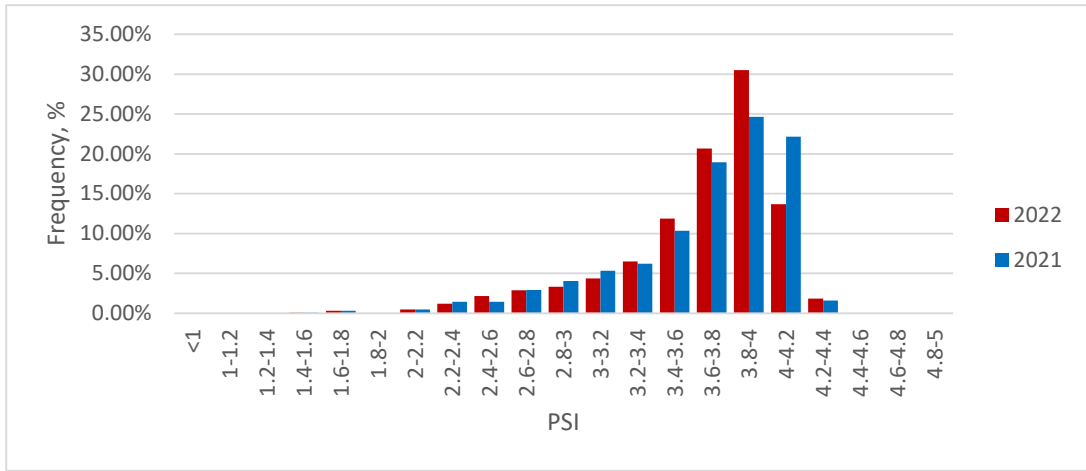
(Average PQI=3.807 for 984 lane miles)



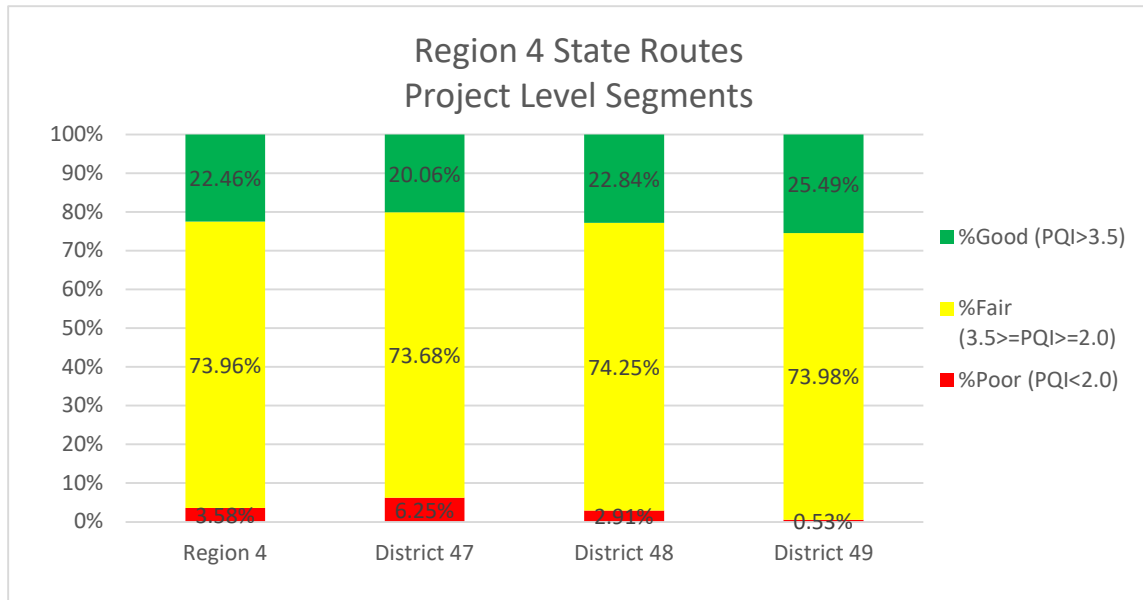
(Average PQI=3.844 for 206 centerline miles *)

Note:* The mileage provided in the bar chart “Region 4 Interstate One Mile Segments” includes two directions.

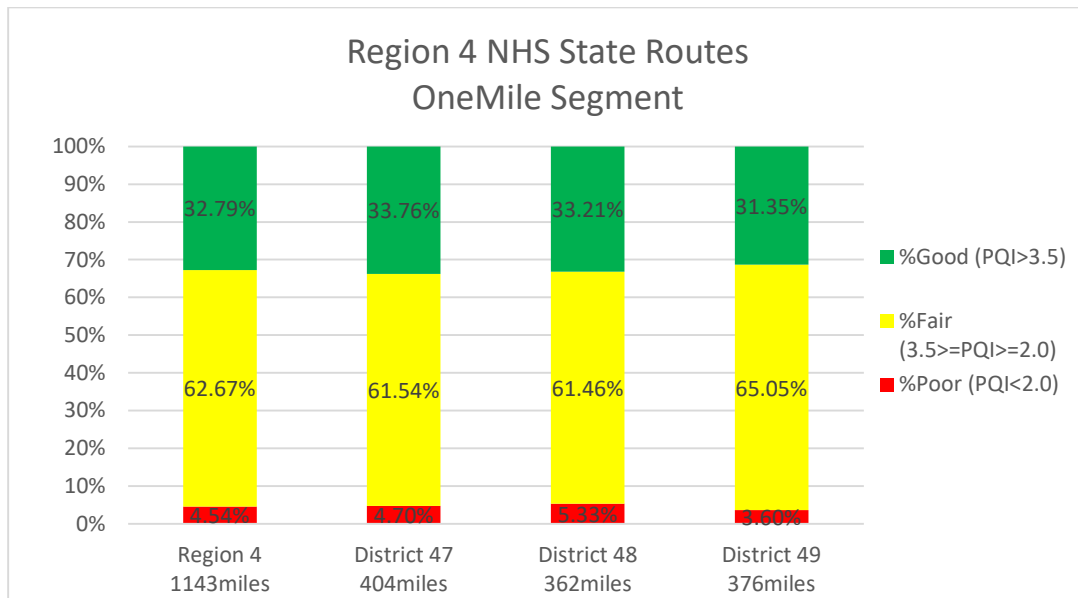
Distribution of Pavement Condition Indices- Region 4 Interstates, One Mile Segments



5.2 Region 4 State Routes

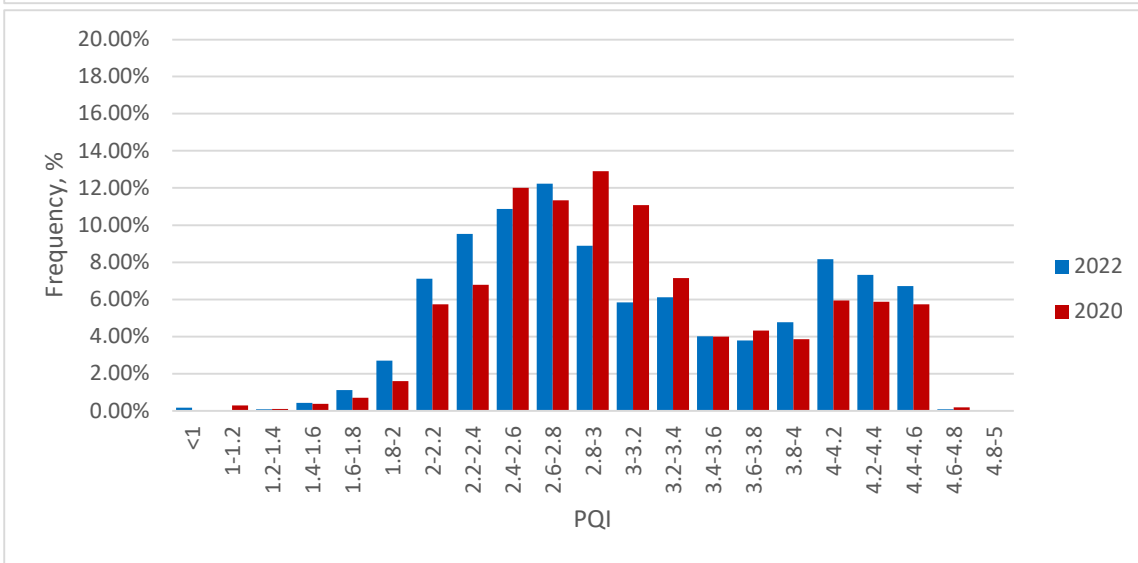
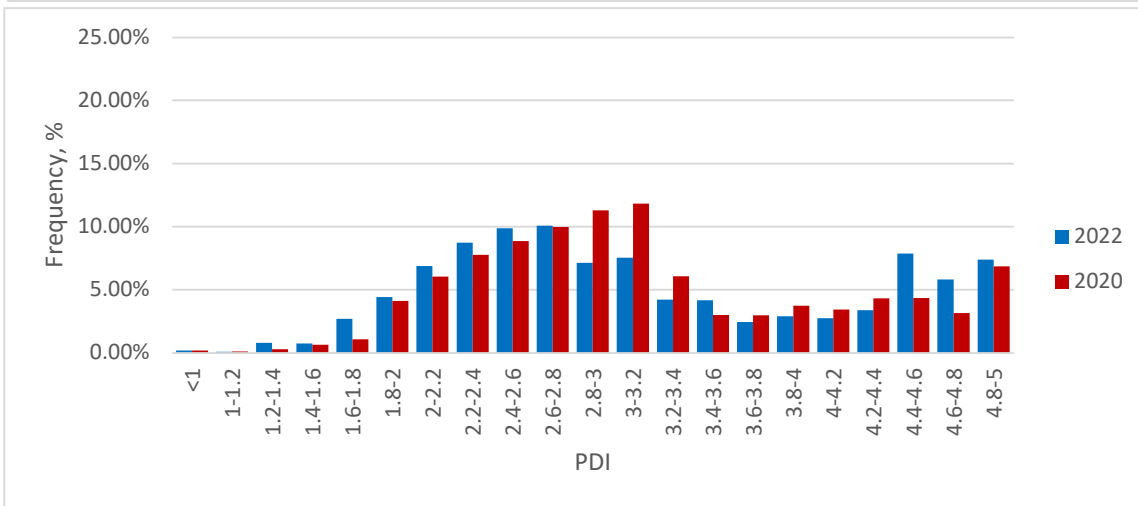
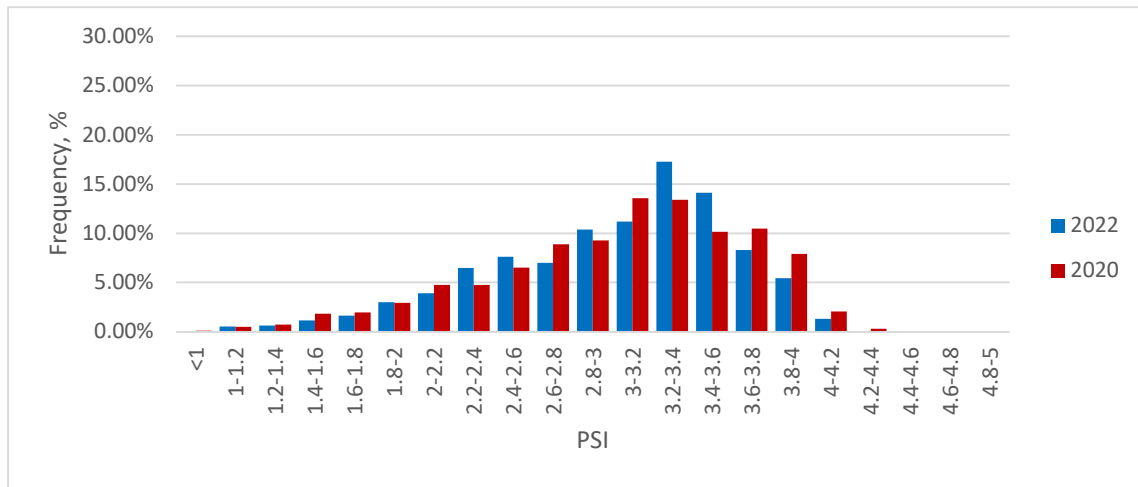


(Average PQI=2.930 for 8,542 lane miles)



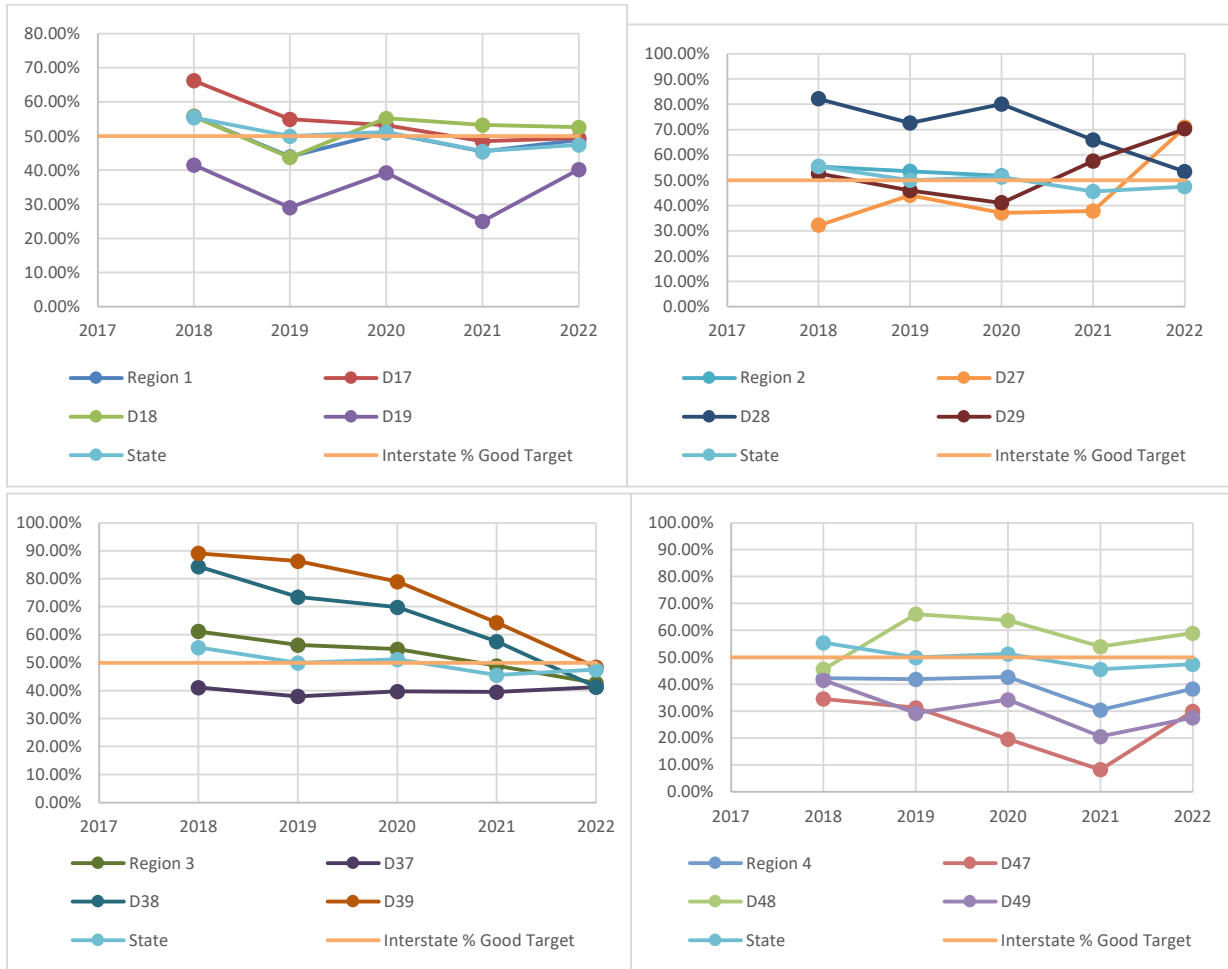
(Average PQI=3.105 for 1,143 centerline miles)

Distribution of Pavement Condition Indices- Region 4 NHS State Routes (One Mile Segments)



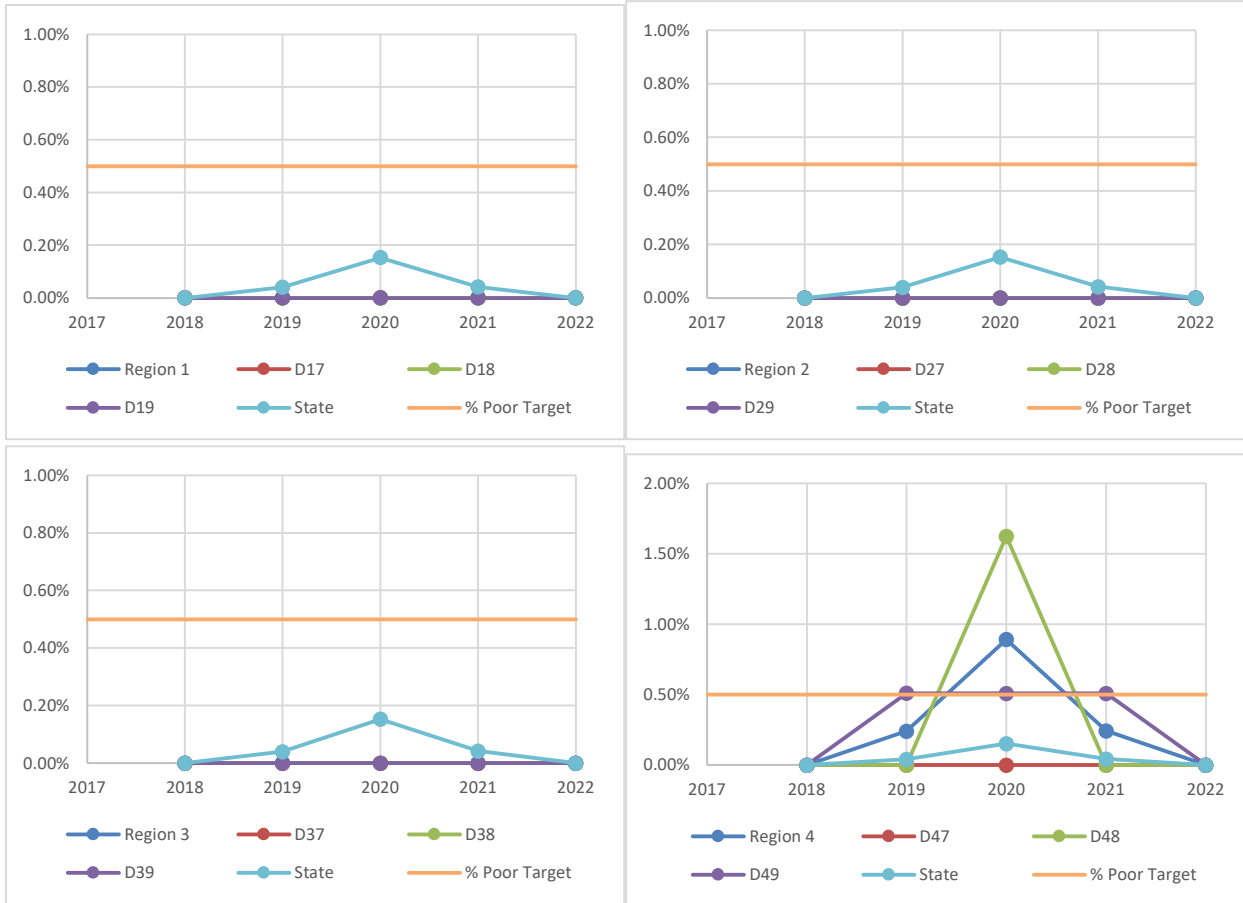
Appendix I: TAMP Metrics

Interstate %Good (Project-Length Segments)



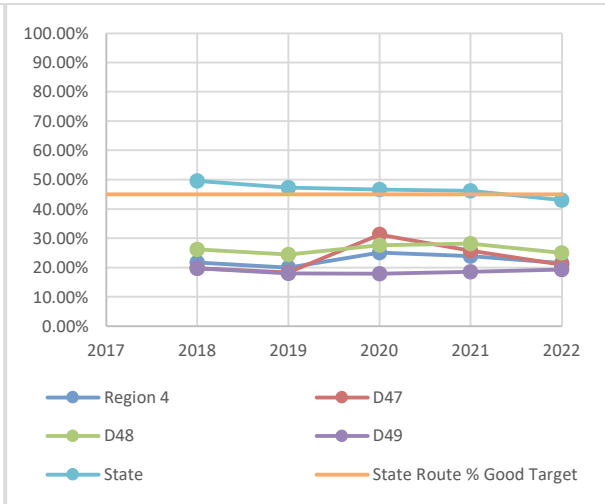
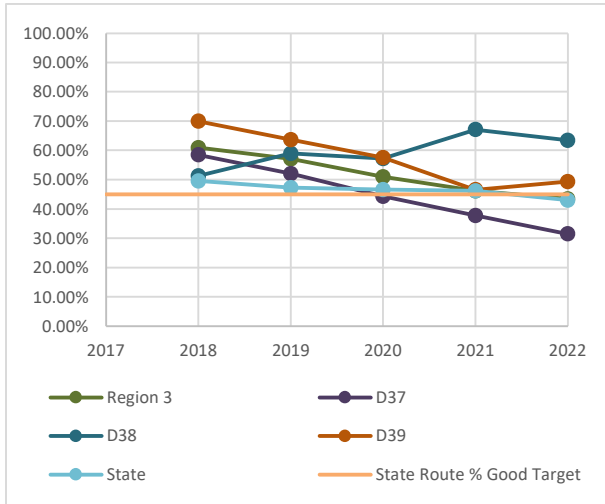
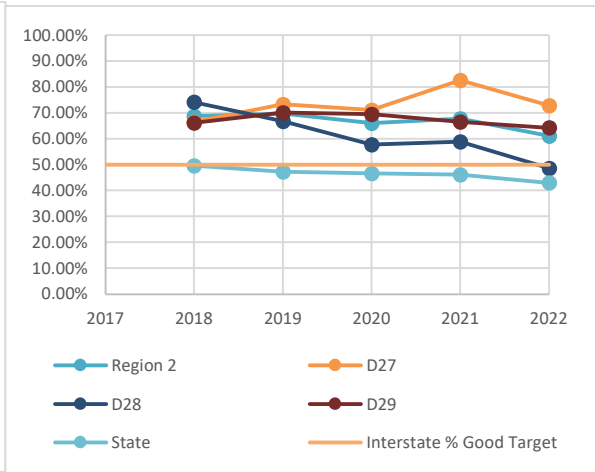
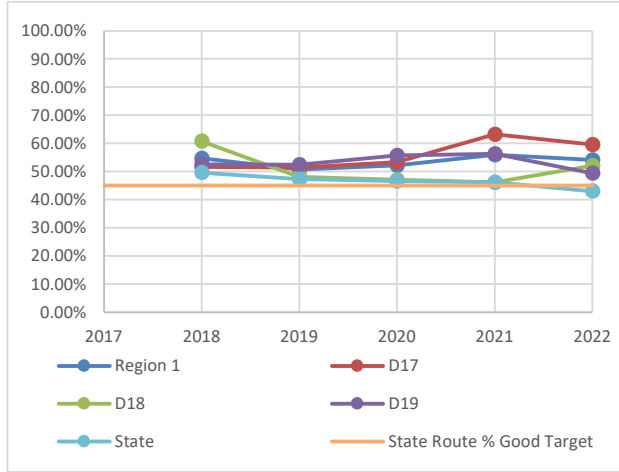
Region/District	Year					Region/District	Year				
	2018	2019	2020	2021	2022		2018	2019	2020	2021	2022
Region 1	55.86%	43.99%	51.01%	45.44%	48.84%	Region 2	55.40%	53.44%	51.76%	54.05%	65.31%
D17	66.27%	54.94%	53.18%	48.49%	49.43%	D27	32.24%	43.96%	37.05%	37.81%	70.90%
D18	55.70%	43.75%	55.23%	53.24%	52.60%	D28	82.18%	72.54%	80.11%	65.90%	53.43%
D19	41.57%	29.03%	39.29%	25.07%	40.24%	D29	52.56%	45.89%	41.07%	57.53%	70.30%
Region 3	61.20%	56.27%	54.88%	48.85%	42.74%	Region 4	42.19%	41.91%	42.71%	30.44%	38.29%
D37	41.05%	37.96%	39.73%	39.44%	41.28%	D47	34.59%	31.25%	19.60%	8.27%	29.94%
D38	84.36%	73.51%	69.76%	57.62%	41.36%	D48	45.62%	66.06%	63.74%	53.94%	58.93%
D39	89.13%	86.27%	78.96%	64.36%	48.38%	D49	41.54%	29.24%	34.25%	20.57%	27.56%
State	55.43%	49.93%	51.19%	45.58%	47.46%						

Interstate %Poor (One Mile Segments)



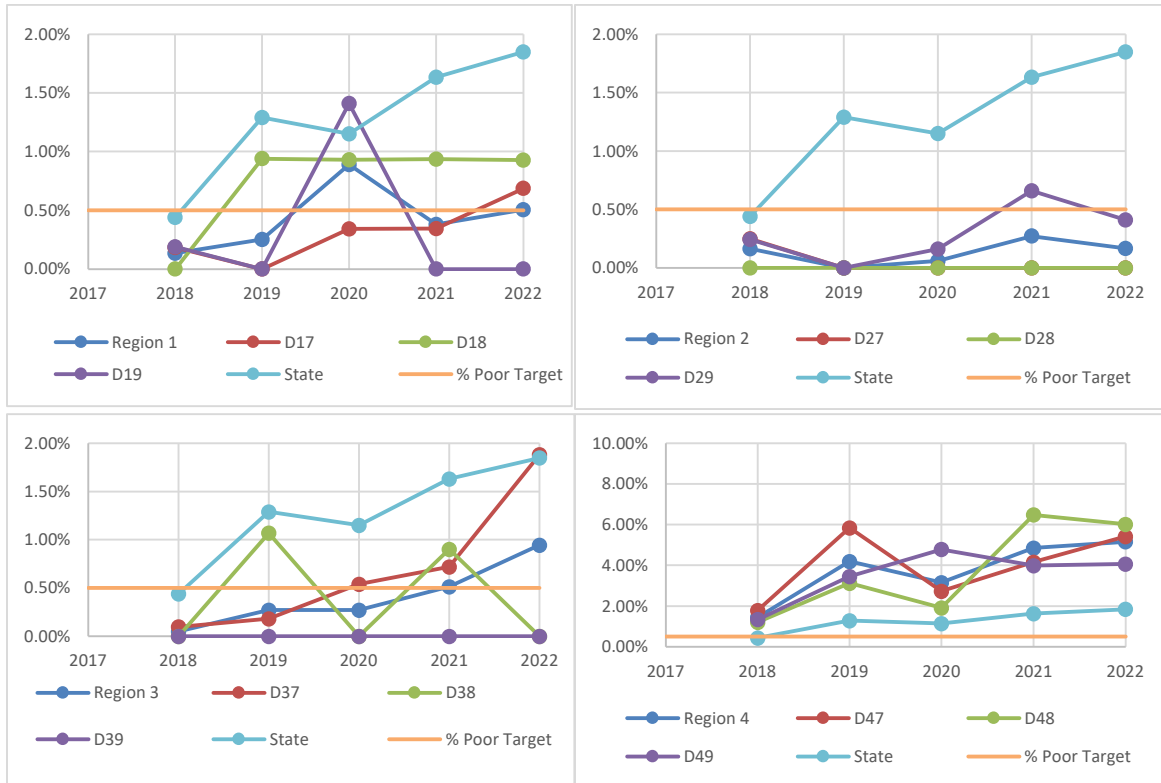
Region/District	Year					Region/District	Year				
	2018	2019	2020	2021	2022		2018	2019	2020	2021	2022
Region 1	0.00%	0.00%	0.00%	0.00%	0.00%	Region 2	0.00%	0.00%	0.00%	0.00%	0.00%
D17	0.00%	0.00%	0.00%	0.00%	0.00%	D27	0.00%	0.00%	0.00%	0.00%	0.00%
D18	0.00%	0.00%	0.00%	0.00%	0.00%	D28	0.00%	0.00%	0.00%	0.00%	0.00%
D19	0.00%	0.00%	0.00%	0.00%	0.00%	D29	0.00%	0.00%	0.00%	0.00%	0.00%
Region 3	0.00%	0.00%	0.00%	0.00%	0.00%	Region 4	0.00%	0.24%	0.89%	0.24%	0.00%
D37	0.00%	0.00%	0.00%	0.00%	0.00%	D47	0.00%	0.00%	0.00%	0.00%	0.00%
D38	0.00%	0.00%	0.00%	0.00%	0.00%	D48	0.00%	0.00%	1.63%	0.00%	0.00%
D39	0.00%	0.00%	0.00%	0.00%	0.00%	D49	0.00%	0.51%	0.51%	0.51%	0.00%
State	0.00%	0.04%	0.15%	0.04%	0.00%						

NHS State Route %Good (Project-Length Segments)



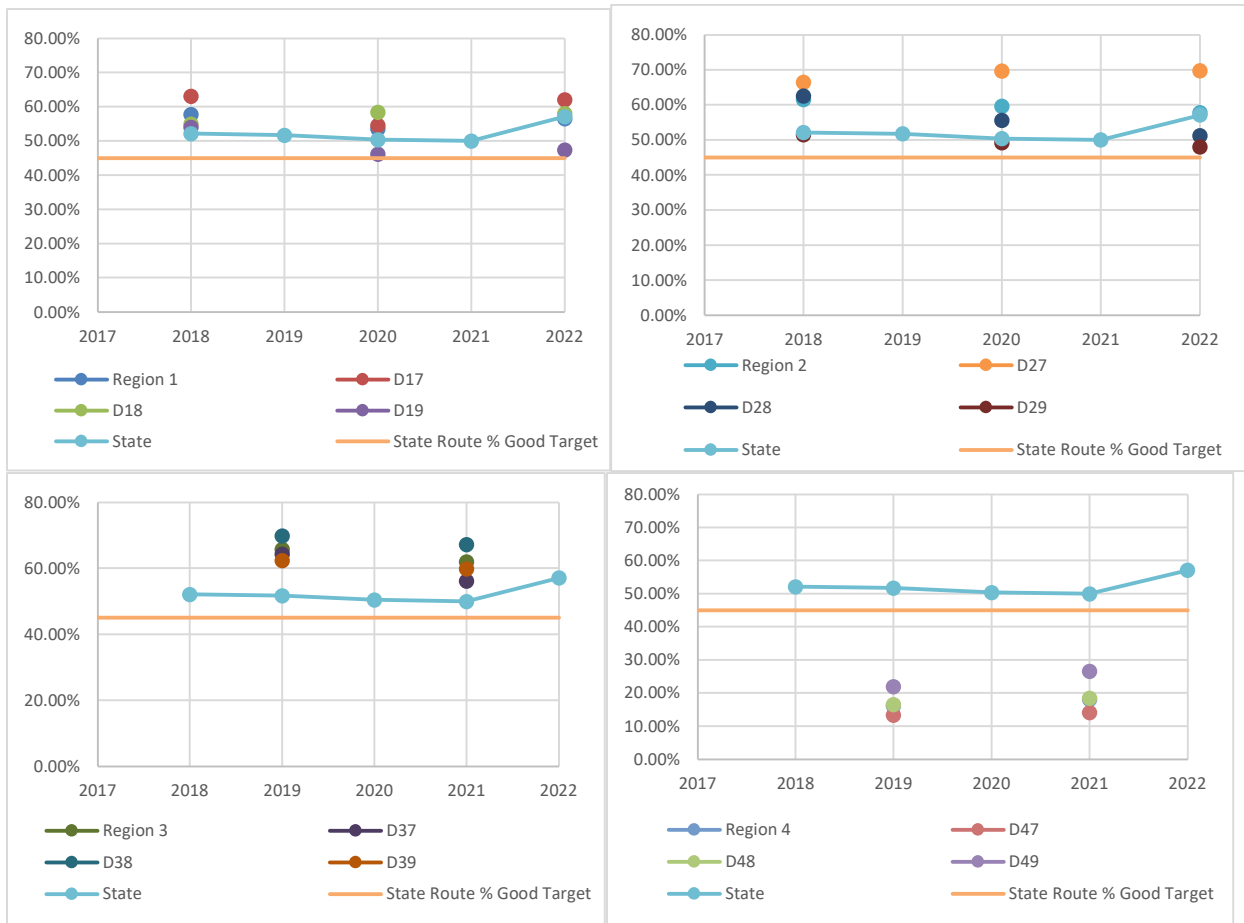
Region/District	Year					Region/District	Year				
	2018	2019	2020	2021	2022		2018	2019	2020	2021	2022
Region 1	54.64%	50.75%	52.19%	55.95%	54.07%	Region 2	68.78%	69.75%	66.00%	67.69%	61.08%
D17	51.65%	51.46%	53.32%	63.20%	59.53%	D27	66.55%	73.33%	71.09%	82.60%	72.83%
D18	60.79%	48.09%	47.08%	46.19%	52.11%	D28	74.14%	66.79%	57.75%	58.83%	48.59%
D19	52.52%	52.42%	55.70%	56.32%	49.42%	D29	66.09%	70.09%	69.46%	66.47%	64.26%
Region 3	60.95%	57.11%	50.95%	46.16%	43.47%	Region 4	21.71%	20.02%	25.15%	23.85%	21.52%
D37	58.47%	52.08%	44.28%	37.81%	31.52%	D47	19.79%	18.35%	31.32%	25.75%	20.94%
D38	51.34%	58.97%	57.24%	67.14%	63.42%	D48	26.24%	24.45%	27.59%	28.22%	24.98%
D39	69.98%	63.65%	57.52%	46.59%	49.39%	D49	19.76%	18.03%	17.90%	18.57%	19.29%
State	49.61%	47.28%	46.61%	46.17%	43.02%						

NHS State Route %Poor (One-Mile Segments)



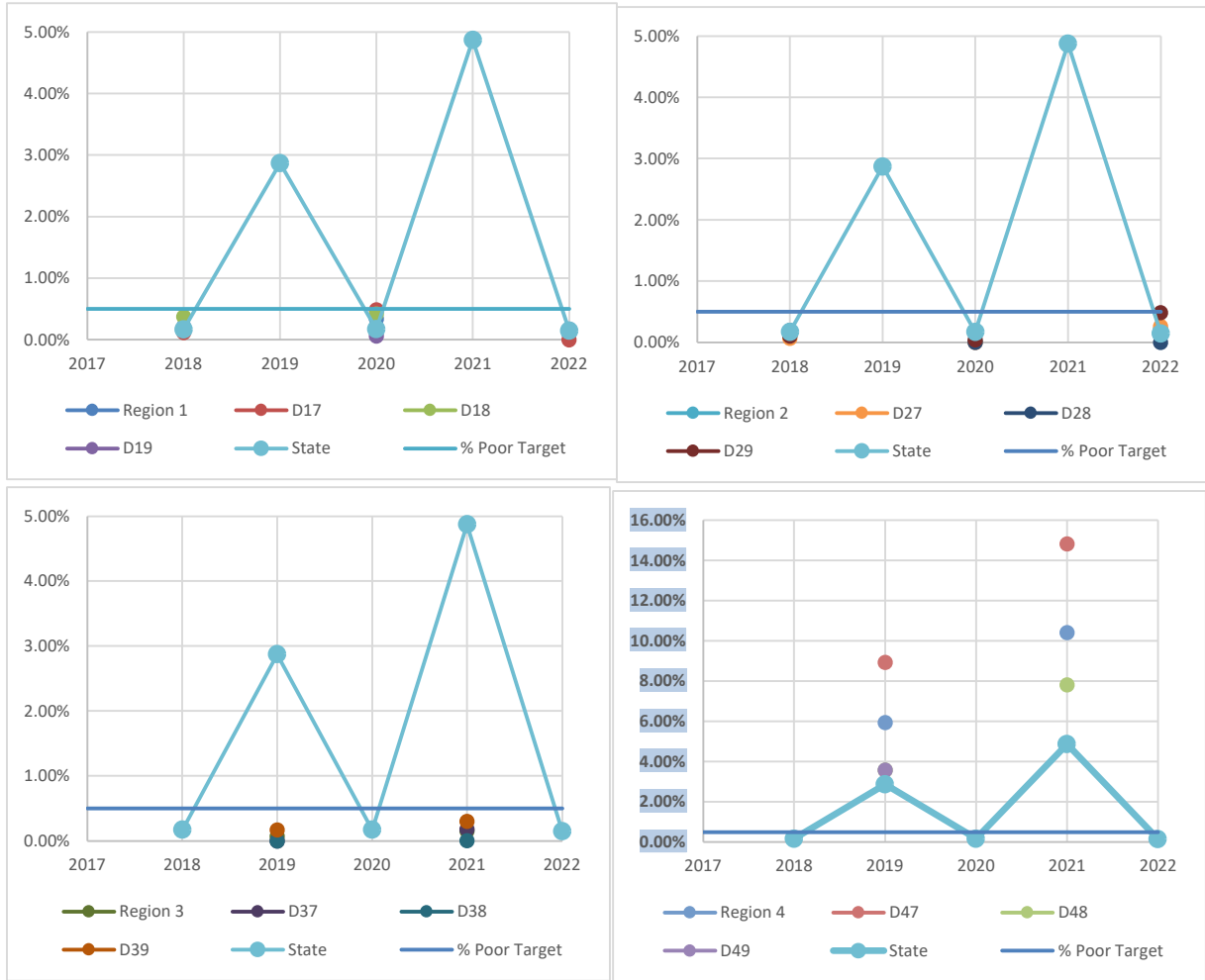
Region/District	Year					Region/District	Year				
	2018	2019	2020	2021	2022		2018	2019	2020	2021	2022
Region 1	0.13%	0.25%	0.89%	0.38%	0.50%	Region 2	0.16%	0.00%	0.06%	0.27%	0.17%
D17	0.18%	0.00%	0.34%	0.34%	0.69%	D27	0.25%	0.00%	0.00%	0.00%	0.00%
D18	0.00%	0.94%	0.93%	0.93%	0.93%	D28	0.00%	0.00%	0.00%	0.00%	0.00%
D19	0.19%	0.00%	1.41%	0.00%	0.00%	D29	0.24%	0.00%	0.16%	0.66%	0.41%
Region 3	0.05%	0.27%	0.27%	0.51%	0.94%	Region 4	1.46%	4.19%	3.15%	4.85%	5.16%
D37	0.10%	0.18%	0.54%	0.72%	1.88%	D47	1.79%	5.85%	2.73%	4.17%	5.43%
D38	0.00%	1.07%	0.00%	0.90%	0.00%	D48	1.21%	3.12%	1.92%	6.49%	6.02%
D39	0.00%	0.00%	0.00%	0.00%	0.00%	D49	1.35%	3.46%	4.79%	3.99%	4.06%
State	0.44%	1.29%	1.15%	1.63%	1.85%						

Non-NHS State Route %Good (Project-Length Segments)



Region/District	Year					Region/District	Year				
	2018	2019	2020	2021	2022		2018	2019	2020	2021	2022
Region 1	57.70%	NA	53.58%	NA	56.53%	Region 2	61.47%	NA	59.59%	NA	57.68%
D17	63.05%	NA	54.55%	NA	62.01%	D27	66.41%	NA	69.65%	NA	69.67%
D18	54.94%	NA	58.42%	NA	58.00%	D28	62.53%	NA	55.60%	NA	51.02%
D19	53.99%	NA	46.17%	NA	47.36%	D29	51.42%	NA	49.15%	NA	48.02%
Region 3	NA	65.76%	NA	61.96%	NA	Region 4	NA	16.12%	NA	18.12%	NA
D37	NA	64.33%	NA	56.15%	NA	D47	NA	13.31%	NA	14.10%	NA
D38	NA	69.82%	NA	67.20%	NA	D48	NA	16.50%	NA	18.46%	NA
D39	NA	62.32%	NA	59.80%	NA	D49	NA	21.96%	NA	26.54%	NA
State	52.12%	51.70%	50.39%	49.99%	57.08%						

Non-NHS State Route %Poor (One-Mile Segments)



Region/District	Year					Region/District	Year				
	2018	2019	2020	2021	2022		2018	2019	2020	2021	2022
Region 1	0.22%	NA	0.34%	NA	0.10%	Region 2	0.12%	NA	0.01%	NA	0.21%
D17	0.12%	NA	0.49%	NA	0.00%	D27	0.06%	NA	0.00%	NA	0.26%
D18	0.38%	NA	0.42%	NA	0.14%	D28	0.19%	NA	0.00%	NA	0.00%
D19	0.16%	NA	0.06%	NA	0.18%	D29	0.10%	NA	0.04%	NA	0.48%
Region 3	NA	0.70%	NA	0.16%	NA	Region 4	NA	5.94%	NA	10.40%	NA
D37	NA	0.00%	NA	0.18%	NA	D47	NA	8.93%	NA	14.82%	NA
D38	NA	0.00%	NA	0.00%	NA	D48	NA	3.57%	NA	7.80%	NA
D39	NA	0.17%	NA	0.30%	NA	D49	NA	3.57%	NA	4.85%	NA
State	0.17%	2.87%	0.17%	4.87%	0.15%						

Appendix II: List of segments in poor condition (1-mile segment)

County #	COUNTY	Region	District	Route Type	Route Number	County Sequence	Special Case	Direction	Begin Log Mile	End Log Mile	Length	IRI	HCIRI	Rut Depth	PSI	PDI	PQI
1	ANDERSON	1	18	SR	9	1		P	3	4	1	89.28	71.81	0.17	3.06	1.45	1.81
3	BENTON	4	47	SR	69	1		P	13	14	1	143.57	114.06	0.18	2.27	1.63	1.8
3	BENTON	4	47	SR	69	1		P	14	15	1	100.93	78.38	0.16	2.87	1.46	1.79
6	BRADLEY	2	29	SR	40	1	SB	P	0	0.19	0.19	235.39	196.48	0.22	1.37	2.28	1.96
9	CARROLL	4	47	SR	22	1	BYP	P	0	1	1	164.79	127.17	0.23	2.02	0.72	0.98
9	CARROLL	4	47	SR	22	1	BYP	P	1	2	1	156	126.37	0.24	2.12	0.42	0.68
9	CARROLL	4	47	SR	76	1		P	15	16	1	125.3	101.28	0.18	2.51	1.2	1.5
9	CARROLL	4	47	SR	76	1		P	16	17	1	94.7	75.64	0.13	2.97	1.34	1.7
9	CARROLL	4	47	SR	76	1		P	17	18	1	123.86	103.45	0.18	2.53	1.75	1.95
13	CLAIBORNE	1	19	SR	383	1		P	0	0.71	0.71	104.13	84.13	0.18	2.82	1.68	1.96
17	CROCKETT	4	48	SR	20	1		P	9	10	1	84.58	65.76	0.16	3.14	1.51	1.88
18	CUMBERLAND	2	27	SR	101	1		P	17	18	1	118.9	102.47	0.24	2.6	1.49	1.76
18	CUMBERLAND	2	27	SR	419	1		P	4	4.04	0.04	637.56	629.6	0.1	0.15	5	1.75
19	DAVIDSON	3	37	SR	6	1		P	2	3	1	156.86	141.41	0.21	2.11	1.52	1.68
19	DAVIDSON	3	37	SR	6	1		P	7	8	1	211.77	179.18	0.18	1.56	1.42	1.46
19	DAVIDSON	3	37	SR	11	2		P	2	3	1	109.36	84.4	0.1	2.74	1.67	1.94
19	DAVIDSON	3	37	SR	11	2		P	3	3.42	0.42	96.55	73.75	0.1	2.94	1.31	1.67
19	DAVIDSON	3	37	SR	45	1		P	7	8	1	112.03	113.86	0.18	2.7	1.73	1.98
19	DAVIDSON	3	37	SR	45	1		P	12	13	1	102.84	82.86	0.15	2.84	1.63	1.93
19	DAVIDSON	3	37	SR	65	1		P	5	6	1	145.99	124.74	0.19	2.24	1.63	1.79
19	DAVIDSON	3	37	SR	65	1		P	7	8	1	127.49	101.81	0.19	2.48	1.36	1.63
20	DECATUR	4	48	SR	20	1		P	4	5	1	98.42	83.5	0.2	2.91	1.67	1.97
20	DECATUR	4	48	SR	20	1		P	5	6	1	75.55	62.71	0.16	3.3	1.56	1.95
20	DECATUR	4	48	SR	69	1		P	16	17	1	195.08	156.03	0.29	1.71	2.02	1.92
23	DYER	4	47	SR	3	1		P	9	10	1	145.99	118.58	0.19	2.24	1.72	1.86
23	DYER	4	47	SR	104	1		P	23	24	1	147.62	117.75	0.25	2.22	1.8	1.92

County #	COUNTY	Region	District	Route Type	Route Number	County Sequence	Special Case	Direction	Begin Log Mile	End Log Mile	Length	IRI	HCIRI	Rut Depth	PSI	PDI	PQI
23	DYER	4	47	SR	104	1		P	24	25	1	123.14	99.49	0.2	2.54	1.69	1.91
23	DYER	4	47	SR	104	1		P	25	26	1	131.94	103.73	0.24	2.42	1.83	1.99
23	DYER	4	47	SR	104	1		P	27	28	1	156.86	121.46	0.17	2.11	1.6	1.74
25	FENTRESS	2	27	SR	85	1		P	10	11	1	110.02	91.5	0.12	2.73	1.55	1.84
27	GIBSON	4	47	SR	104	1		P	10	11	1	207.17	154.22	0.3	1.6	2.01	1.88
32	HAMBLEN	1	17	SR	34	1		P	16	17	1	69.59	56.91	0.14	3.41	1.5	1.92
32	HAMBLEN	1	17	SR	34	1		P	17	18	1	85.16	70.34	0.13	3.13	1.39	1.77
33	HAMILTON	2	29	SR	27	1		P	4	5	1	317.95	294.38	0.22	0.87	2.67	1.91
33	HAMILTON	2	29	SR	317	1		P	9	10	1	93.48	79.05	0.13	2.99	1.67	1.99
33	HAMILTON	2	29	SR	389	1		P	0	0.24	0.24	342.52	303.7	0.13	0.76	2.33	1.66
35	HARDEMAN	4	48	SR	15	1		P	12	13	1	200.48	169.37	0.16	1.66	1.55	1.58
35	HARDEMAN	4	48	SR	15	1		P	13	14	1	185.75	164.59	0.2	1.8	2.02	1.95
35	HARDEMAN	4	48	SR	15	1		P	14	15	1	191.92	170.33	0.36	1.74	1.92	1.86
36	HARDIN	4	48	SR	15	1		P	0	1	1	98.42	76.71	0.2	2.91	1.39	1.73
36	HARDIN	4	48	SR	15	1		P	6	7	1	117.5	103.74	0.18	2.62	1.56	1.82
36	HARDIN	4	48	SR	69	1		P	21	22	1	155.15	118.76	0.27	2.13	1.72	1.83
36	HARDIN	4	48	SR	69	1		P	22	23	1	131.94	139.56	0.21	2.42	1.6	1.81
38	HAYWOOD	4	48	SR	1	1		P	10	11	1	146.81	117.52	0.16	2.23	1.64	1.8
39	HENDERSON	4	48	SR	22	1		P	9	10	1	215.3	186.73	0.25	1.53	1.4	1.44
39	HENDERSON	4	48	SR	22	1		P	10	11	1	192.97	173.38	0.21	1.73	2.02	1.93
40	HENRY	4	47	SR	54	1		P	10	11	1	150.93	127.26	0.19	2.18	1.65	1.79
40	HENRY	4	47	SR	54	1		P	15	16	1	80.01	64.7	0.13	3.22	1.36	1.76
40	HENRY	4	47	SR	54	1		P	16	17	1	94.09	76.85	0.15	2.98	1.29	1.66
40	HENRY	4	47	SR	69	1		P	7	8	1	122.43	96.65	0.2	2.55	1.78	1.98
47	KNOX	1	18	SR	1	1		P	22	23	1	162.11	140.4	0.17	2.05	1.7	1.8
47	KNOX	1	18	SR	1	1		P	23	24	1	141.19	124.39	0.18	2.3	1.85	1.97
49	LAUDERDALE	4	49	SR	19	1		P	19	20	1	151.77	139.36	0.25	2.17	1.54	1.71
49	LAUDERDALE	4	49	SR	19	1		P	20	21	1	149.27	116.08	0.23	2.2	1.28	1.51

County #	COUNTY	Region	District	Route Type	Route Number	County Sequence	Special Case	Direction	Begin Log Mile	End Log Mile	Length	IRI	HCIRI	Rut Depth	PSI	PDI	PQI
49	LAUDERDALE	4	49	SR	19	1		P	21	22	1	148.44	121.36	0.26	2.21	1.77	1.89
55	MCNAIRY	4	48	SR	5	1		P	3	4	1	192.97	162.85	0.16	1.73	1.89	1.84
55	MCNAIRY	4	48	SR	15	1		P	5	6	1	100.93	86.46	0.13	2.87	1.36	1.7
55	MCNAIRY	4	48	SR	15	1		P	6	7	1	80.01	65.5	0.15	3.22	1.51	1.9
55	MCNAIRY	4	48	SR	15	1		P	8	9	1	100.3	87.37	0.18	2.88	1.08	1.45
57	MADISON	4	48	SR	1	1	WB	P	0	0.33	0.33	236.72	226.12	0.24	1.36	1.87	1.7
57	MADISON	4	48	SR	18	1		P	8	9	1	99.04	79.67	0.22	2.9	1.3	1.65
58	MARION	2	28	SR	56	1		P	0	0.01	0.01	552.1	548.7	0.05	0.24	3.64	1.61
66	OBION	4	47	SR	22	1		P	5	6	1	127.49	107.85	0.24	2.48	1.81	1.99
69	PICKETT	2	27	SR	325	1	WB	P	0	0.06	0.06	256.47	209.6	0.11	1.22	2.26	1.88
72	RHEA	2	29	SR	303	1		P	2	3	1	198.3	158.11	0.15	1.68	2.04	1.92
73	ROANE	1	19	SR	330	1		P	0	0.38	0.38	196.15	176.55	0.16	1.7	1.97	1.88
79	SHELBY	4	49	SR	1	1		P	28	29	1	134.97	112.49	0.22	2.38	1.62	1.82
79	SHELBY	4	49	SR	3	1		P	12	13	1	236.72	298.02	0.24	1.36	2.04	1.81
79	SHELBY	4	49	SR	3	1	SB	P	0	1	1	280.32	258.21	0.17	1.07	2.39	1.88
79	SHELBY	4	49	SR	4	1		P	2	3	1	289.02	257.27	0.64	1.02	1.29	1.2
79	SHELBY	4	49	SR	15	1		P	16	16.3	0.3	106.07	89.2	0.21	2.79	1.48	1.79
79	SHELBY	4	49	SR	23	1		P	2	3	1	223.82	193.22	0.21	1.46	1.88	1.74
79	SHELBY	4	49	SR	57	1		P	4	5	1	234.06	206.66	0.26	1.38	2.25	1.94
79	SHELBY	4	49	SR	57	1		P	6	7	1	261	235.29	0.25	1.19	2.42	1.96
79	SHELBY	4	49	SR	57	1		P	7	8	1	252.05	217.06	0.27	1.25	2.31	1.92
79	SHELBY	4	49	SR	57	1		P	19	20	1	285.49	268.33	0.3	1.04	2.06	1.68
79	SHELBY	4	49	SR	177	1		P	10	11	1	180.77	149.18	0.2	1.85	1.91	1.89
83	SUMNER	3	37	SR	6	1		P	8	9	1	60.74	48.02	0.16	3.58	0.67	1.11
83	SUMNER	3	37	SR	6	1		P	30	31	1	85.75	74.09	0.18	3.12	1.43	1.81
83	SUMNER	3	37	SR	52	1		P	12	13	1	133.45	107.82	0.37	2.4	1.77	1.94
84	TIPTON	4	49	SR	54	1	SB	P	0	0.25	0.25	401.32	363.42	0.13	0.55	2.89	1.76
92	WEAKLEY	4	47	SR	22	1		P	0	1	1	116.12	99.38	0.13	2.64	1.74	1.97

Appendix III: List of segments in poor condition (Project segment)

County #	COUNTY	Region	District	Route Type	Route Number	County Sequence	Special Case	Direction	From Log Mile	To Log Mile	Length	Lane Miles	IRI	HCIRI	Rut Depth	PSI	PDI	Year of Collection	PQI	Age	NHS
3	BENTON	4	47	SR	1	1		P	4.28	8.54	4.26	8.52	151.77	121.64	0.21	2.17	1.77	2021	1.88	13	0
3	BENTON	4	47	SR	191	1	SB	P	0	0.06	0.06	0.06	433.81	375.4	0.34	0.46	1.76	2021	1.18	0	0
3	BENTON	4	47	SR	391	1		P	0	5.31	5.31	10.62	104.77	87.38	0.18	2.81	1.55	2021	1.85	14	0
6	BRADLEY	2	29	SR	40	1	SB	P	0	0.19	0.19	0.57	235.39	196.48	0.22	1.37	2.28	2022	1.96	0	0
9	CARROLL	4	47	SR	22	1	BYP	P	0	3.59	3.59	14.36	141.19	115.01	0.19	2.3	1.71	2022	1.87	15	1
9	CARROLL	4	47	SR	76	1		P	14.75	18.36	3.61	14.44	114.07	93.86	0.17	2.67	1.63	2022	1.89	15	1
9	CARROLL	4	47	SR	77	1		P	5.8	13.7	7.9	15.8	135.74	115.02	0.13	2.37	1.67	2021	1.85	18	0
9	CARROLL	4	47	SR	124	1		P	0	3.28	3.28	6.56	164.79	144.77	0.18	2.02	1.95	2021	1.97	21	0
9	CARROLL	4	47	SR	364	1		P	0.25	3.28	3.03	12.12	147.62	119.37	0.19	2.22	1.88	2021	1.98	12	0
13	CLAIBORNE	1	19	SR	383	1		P	0	0.71	0.71	2.84	104.13	84.13	0.18	2.82	1.68	2022	1.96	0	0
19	DAVIDSON	3	37	SR	45	1		P	7.14	7.28	0.14	0.56	337.8	292.79	0.24	0.78	0.31	2022	0.41	9	1
20	DECATUR	4	48	SR	201	1		P	0	0.88	0.88	1.76	210.61	171.84	0.12	1.57	2.08	2021	1.91	35	0
23	DYER	4	47	SR	181	1		P	15.955	21.91	5.955	11.91	196.15	158.24	0.23	1.7	1.98	2021	1.89	0	0
23	DYER	4	47	SR	211	1		P	1.71	1.84	0.13	0.52	200.48	170.52	0.16	1.66	1.96	2021	1.86	14	0
27	GIBSON	4	47	SR	5	1		P	11.8	17.17	5.37	10.74	130.44	107.59	0.19	2.44	1.65	2021	1.86	21	0
33	HAMILTON	2	29	SR	2	1		P	8.24	8.4	0.16	0.64	287.25	262.1	0.29	1.03	2.25	2022	1.78	0	1
33	HAMILTON	2	29	SR	316	1		P	0.16	0.23	0.07	0.35	398.05	351.13	0.22	0.56	2.61	2022	1.64	0	1
33	HAMILTON	2	29	SR	389	1		P	0	0.24	0.24	1.44	342.52	303.7	0.13	0.76	2.33	2022	1.66	0	1
36	HARDIN	4	48	SR	69	1		P	17.94	22.8	4.86	9.72	143.57	120.21	0.24	2.27	1.73	2021	1.88	30	0
38	HAYWOOD	4	48	SR	54	1		P	8.62	12.64	4.02	8.04	142.77	119.82	0.24	2.28	1.63	2021	1.8	22	0
38	HAYWOOD	4	48	SR	76	1		P	0	5.57	5.57	11.14	132.69	99.3	0.2	2.41	1.71	2021	1.9	14	0
39	HENDERSON	4	48	SR	22	1		P	9.06	12.62	3.56	14.24	188.81	169.52	0.23	1.77	2.08	2022	1.98	13	1
39	HENDERSON	4	48	SR	22	1	ALT	P	5.285	10.57	5.285	10.57	118.9	98.59	0.12	2.6	1.64	2021	1.88	12	0
40	HENRY	4	47	SR	54	1		P	0	5.56	5.56	11.12	162.11	146.32	0.16	2.05	1.81	2021	1.88	15	0

County #	COUNTY	Region	District	Route Type	Route Number	County Sequence	Special Case	Direction	From Log Mile	To Log Mile	Length	Lane Miles	IRI	HCIRI	Rut Depth	PSI	PDI	Year of Collection	PQI	Age	NHS
40	HENRY	4	47	SR	54	1		P	5.56	11.12	5.56	11.12	142.77	109.63	0.16	2.28	1.82	2021	1.95	15	0
40	HENRY	4	47	SR	69	1	ALT	P	6.21	12.54	6.33	12.66	146.81	115.62	0.19	2.23	1.22	2021	1.46	14	0
40	HENRY	4	47	SR	77	1		P	7.61	10.35	2.74	5.48	138.05	116.65	0.14	2.34	1.81	2021	1.95	16	0
48	LAKE	4	47	SR	78	1		P	6.53	10.64	4.11	8.22	182.75	147.22	0.21	1.83	1.95	2021	1.91	16	0
48	LAKE	4	47	SR	78	1		P	10.64	15.59	4.95	9.9	199.38	173.59	0.16	1.67	1.49	2021	1.54	14	0
49	LAUDERDALE	4	49	SR	19	1		P	12.4	16	3.6	7.2	165.69	141.31	0.19	2.01	1.88	2021	1.92	24	0
55	MCNAIRY	4	48	SR	15	1		P	5.13	10	4.87	19.48	94.7	79.79	0.15	2.97	1.55	2022	1.88	27	1
56	MACON	3	37	SR	10	1	SB	P	0	0.05	0.05	0.1	235.39	193.9	0.18	1.37	2.06	2021	1.82	0	0
57	MADISON	4	48	SR	1	1	WB	P	0	0.33	0.33	1.65	236.72	226.12	0.24	1.36	1.87	2022	1.7	0	1
57	MADISON	4	48	SR	18	1		P	4.7	9.83	5.13	10.26	118.2	88.36	0.22	2.61	1.31	2021	1.61	14	0
58	MARION	2	28	SR	56	1		P	0	0.01	0.01	0.02	552.1	548.7	0.05	0.24	3.64	2022	1.61	0	0
66	OBION	4	47	SR	3	1	SRC	P	0	0.02	0.02	0.04	411.52	338.1	0.18	0.52	3.49	2021	1.97	0	0
66	OBION	4	47	SR	184	1		P	0	6.08	6.08	12.16	222.58	186.05	0.16	1.47	1.91	2021	1.77	22	0
73	ROANE	1	19	SR	330	1		P	0	0.38	0.38	0.76	196.15	176.55	0.16	1.7	1.97	2022	1.88	0	0
79	SHELBY	4	49	SR	3	1	SB	P	0	1.005	1.005	2.01	280.32	258.21	0.17	1.07	2.4	2022	1.88	0	1
79	SHELBY	4	49	SR	4	1		P	7.05	7.61	0.56	2.24	243.53	218.69	0.23	1.31	2.2	2022	1.88	25	1
84	TIPTON	4	49	SR	54	1	SB	P	0	0.25	0.25	0.5	401.32	363.42	0.13	0.55	2.89	2022	1.76	0	1
90	WASHINGTON	1	17	SR	381	1		P	7.49	7.52	0.03	0.09	252.05	239.53	0.11	1.25	1.25	2022	1.25	30	1
90	WASHINGTON	1	17	SR	381	1		P	7.52	7.63	0.11	0.33	182.75	174.07	0.1	1.83	1.37	2022	1.49	30	1
92	WEAKLEY	4	47	SR	22	1	SRC	P	0	0.5	0.5	2	236.72	189.02	0.16	1.36	2.02	2021	1.79	0	0
92	WEAKLEY	4	47	SR	54	1		P	6.21	10.64	4.43	8.86	156.86	123.88	0.19	2.11	1.47	2021	1.64	21	0
92	WEAKLEY	4	47	SR	54	1		P	17.4	22.14	4.74	9.48	145.99	111.94	0.21	2.24	1.57	2021	1.75	18	0
92	WEAKLEY	4	47	SR	431	1		P	2.87	5.37	2.5	10	147.62	121.79	0.22	2.22	1.72	2021	1.86	14	0