



HAMILTON COUNTY
East Brainerd (SR-320),
From East of Bel-Air Road
To Ooltewah-Ringgold Road (SR-321)

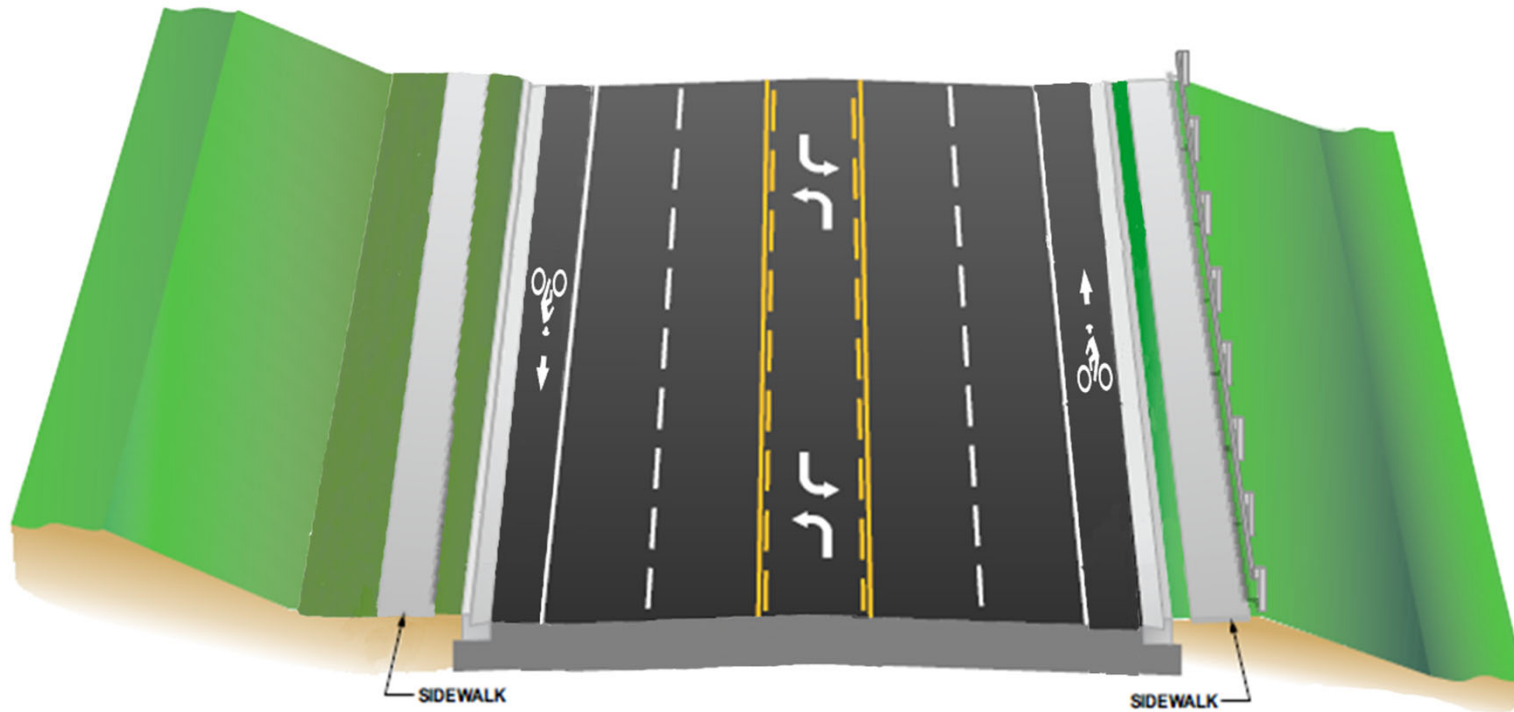
PROJECT LIMITS



PROJECT PURPOSE

- To create a consistent 5 lane curb and gutter roadway with bicycle lanes and sidewalks along East Brainerd Road.
- To provide additional lanes for safe traffic operations.
- Improve major Intersection at East Brainerd Road and Ooltewah-Ringgold Road.

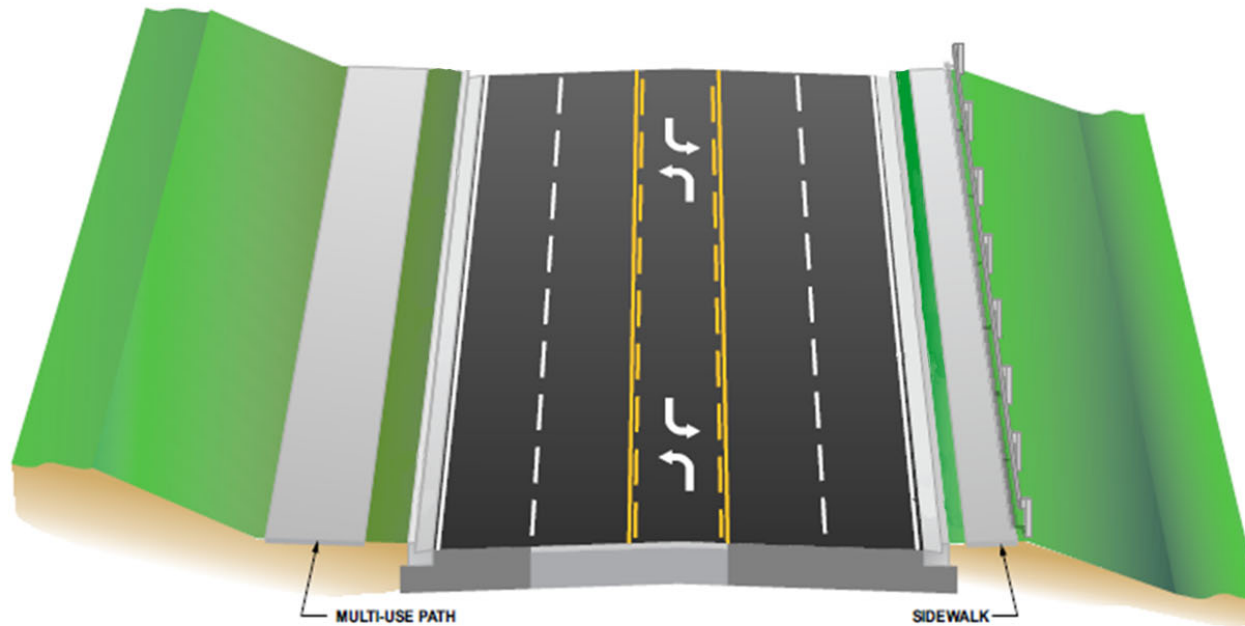
East Brainerd(SR-320) DESIGN TEMPLATE



EAST BRAINERD (SR-320) TEMPLATE

- 5 LANE CURB & GUTTER
- 6' SHOULDERS (INCLUDES BIKE LANE)
- 2' GRASS STRIP AND 5' SIDEWALKS

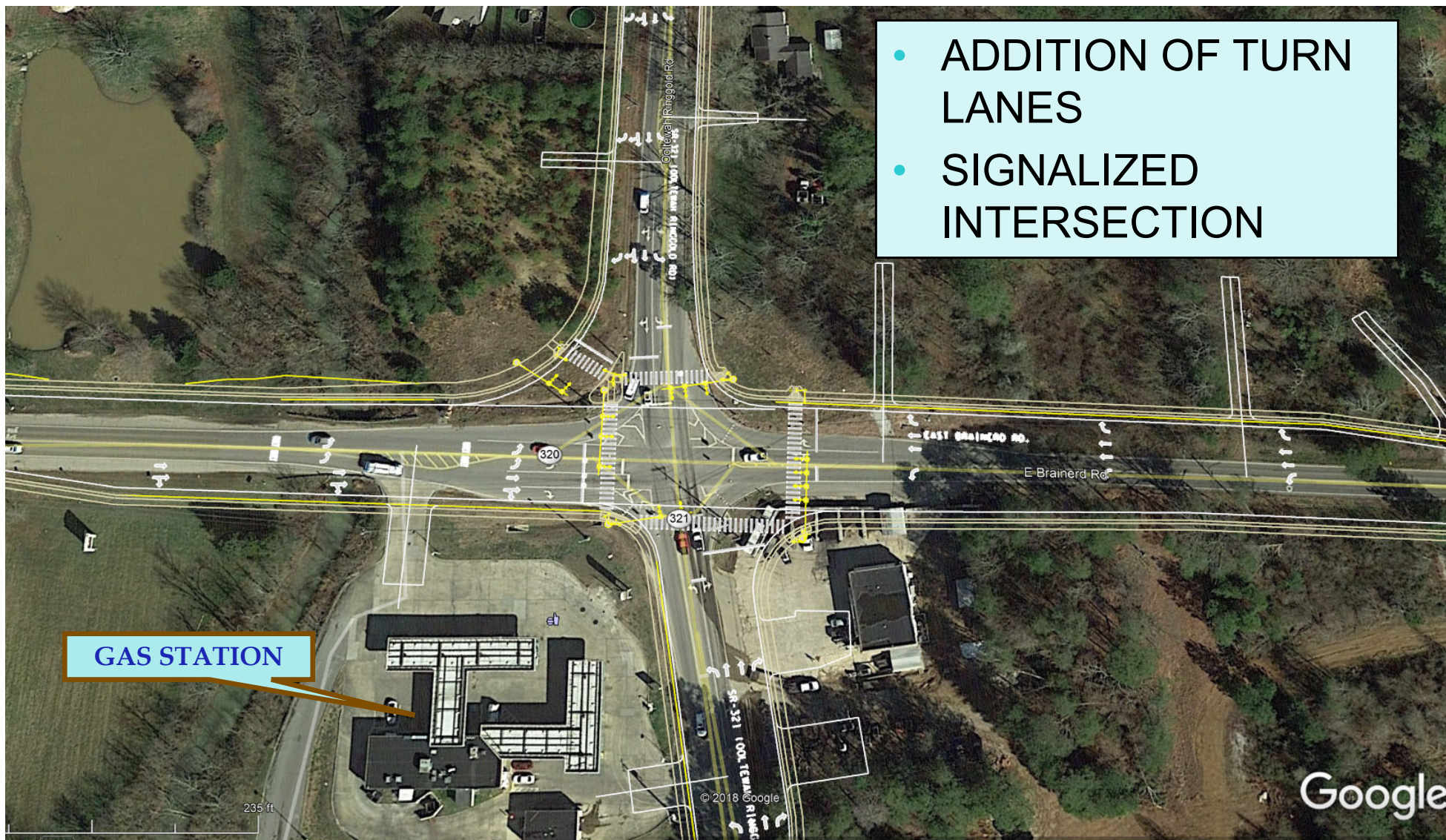
Ooltewah Ringgold Road (SR-321) DESIGN TEMPLATE



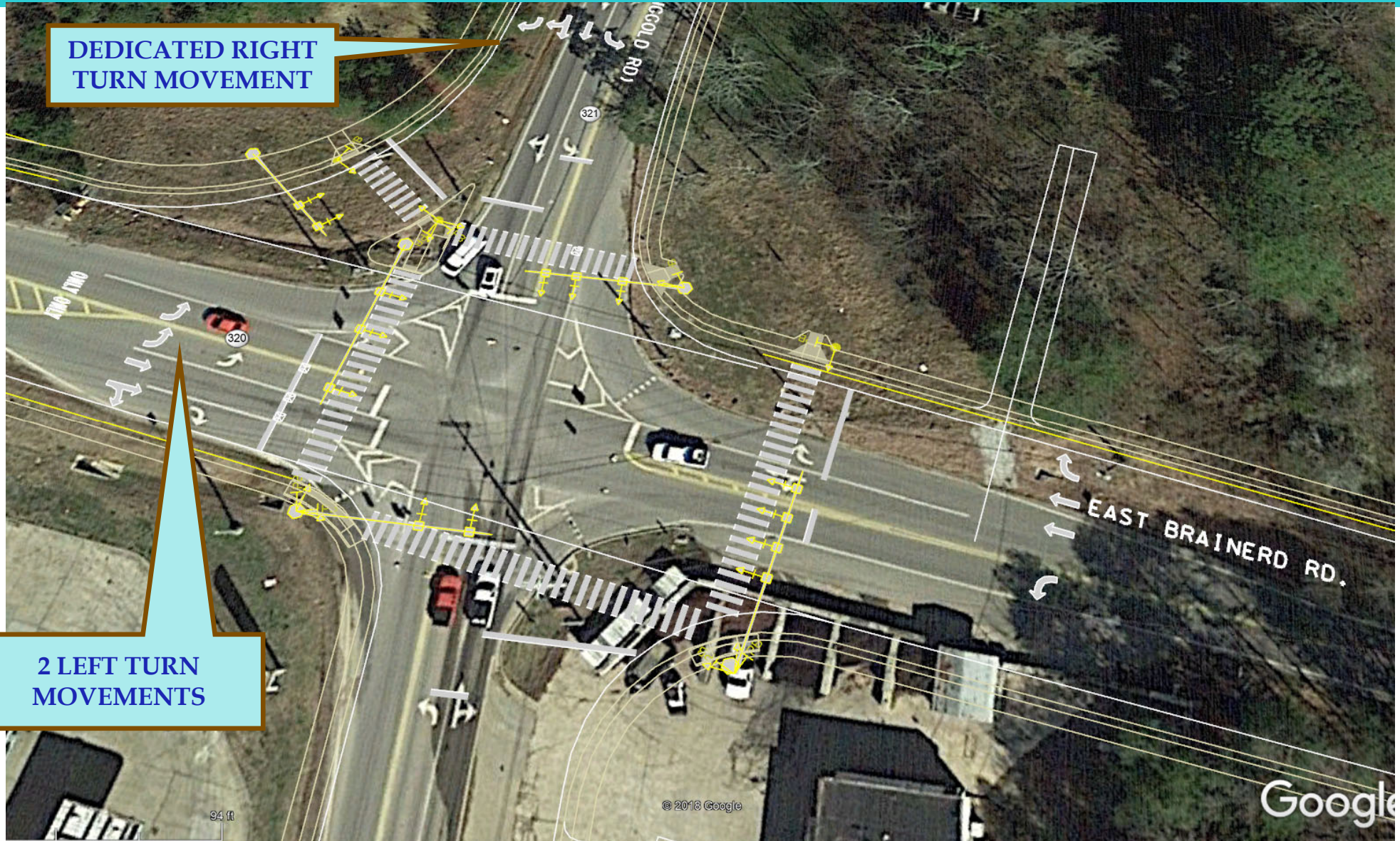
OOLTEWAH-RINGGOLD(SR-321) TEMPLATE FROM EAST BRAINERD/OOLTEWAH RINGGOLD ROAD INTERSECTION TO EAST HAMILTON MIDDLE HIGH SCHOOL

- 5 LANE CURB & GUTTER
- NO SHOULDERS
- 2.5' GRASS STRIP
- 10' MULTI-USE PATH AND 5' SIDEWALK

East Brainerd Rd/Ooltewah Ringgold Road Intersection



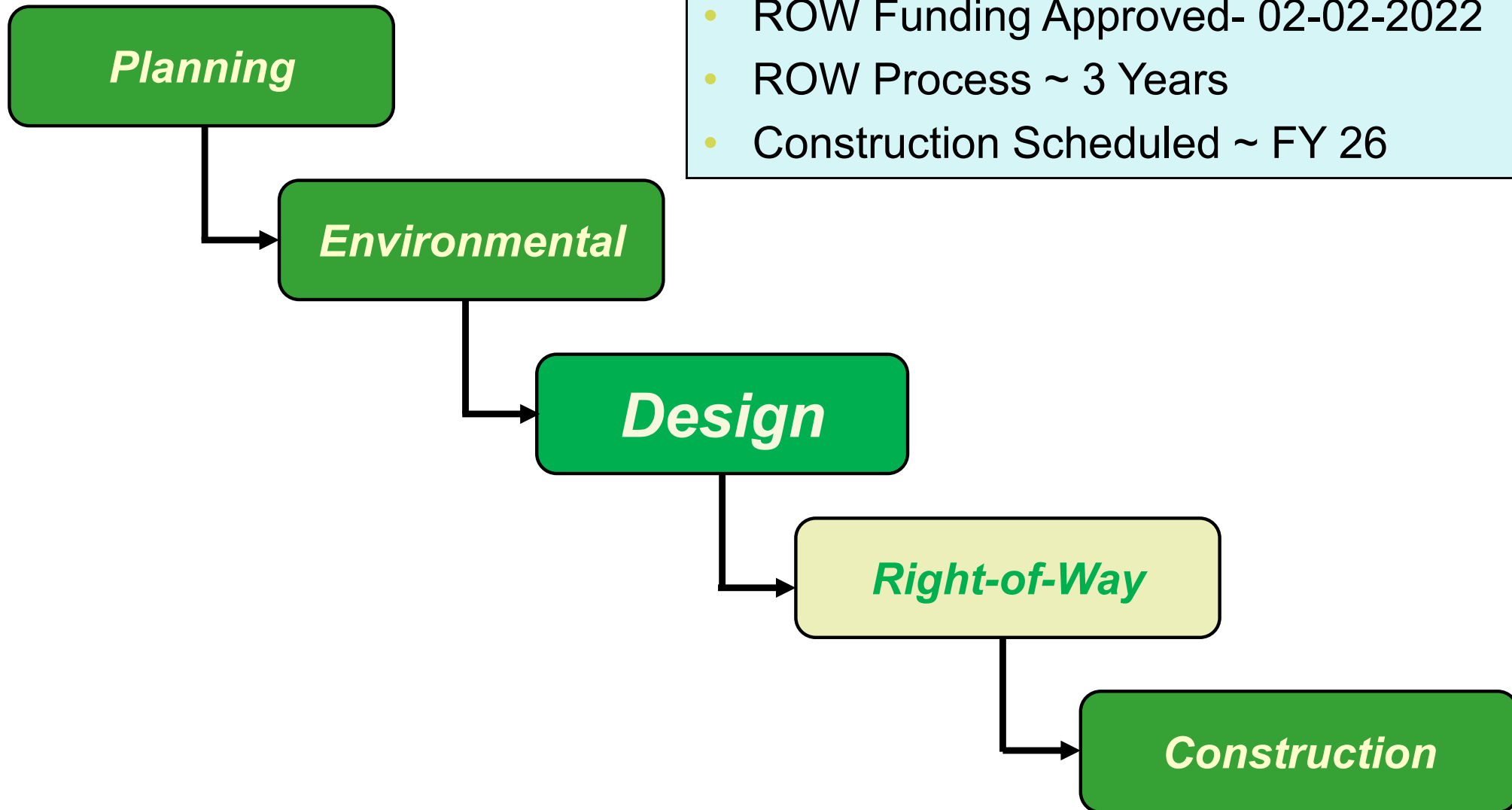
East Brainerd Rd/Ooltewah Ringgold Road Intersection



DEDICATED RIGHT
TURN MOVEMENT

2 LEFT TURN
MOVEMENTS

PROJECT DEVELOPMENT PROCESS



UPDATE SINCE PUBLIC MEETING

- S.U.E. Coordination
- Utility Deconfliction
- Constructability Reviews
- Updated Plans for Future Developments

NEXT STEPS

- T.D.O.T. Survey-Staking R.O.W. ~ June 2023
- R.O.W. Meeting ~ July 2023



Thank You

East Brainerd (SR-320),
From East of Bel-Air Road
To Ooltewah-Ringgold Road (SR-321)