



TDOT Statewide Yearly Report

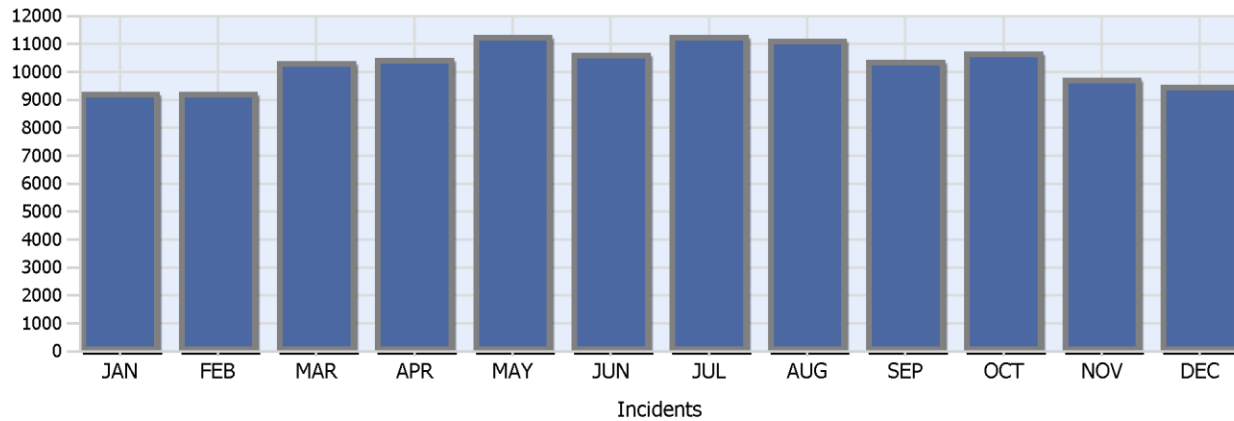


Year 2019

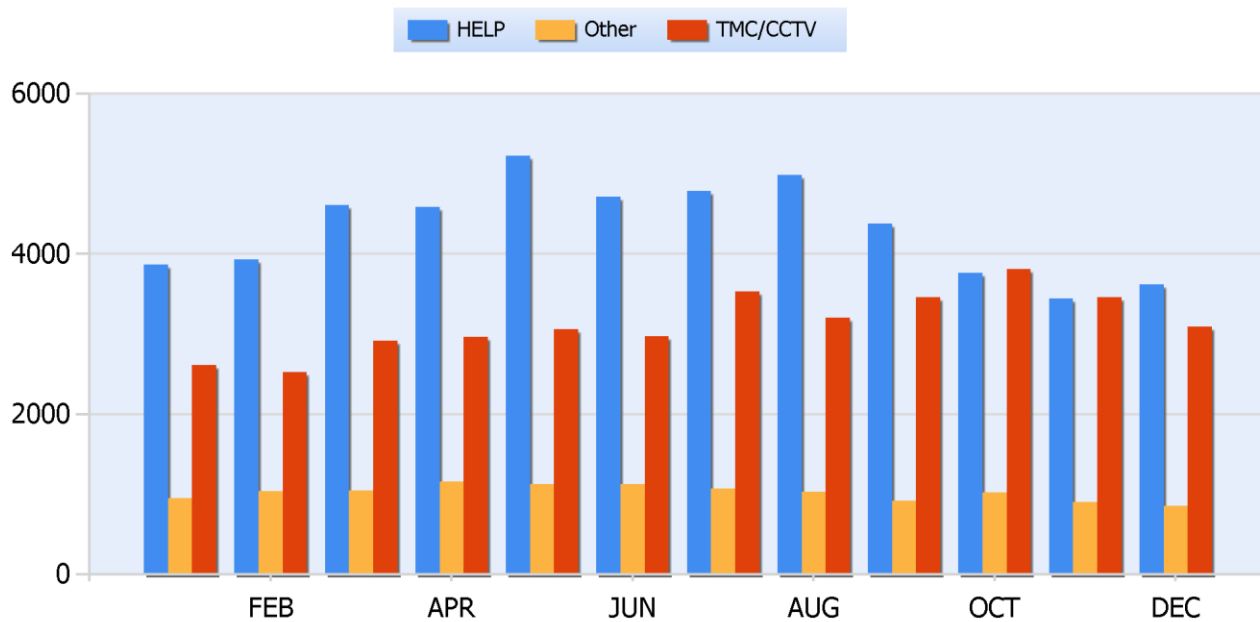
Total Incidents Managed This Year: 124527

Incidents Managed YTD

Total Incidents Managed YTD - 124526



Incidents By Detection Source





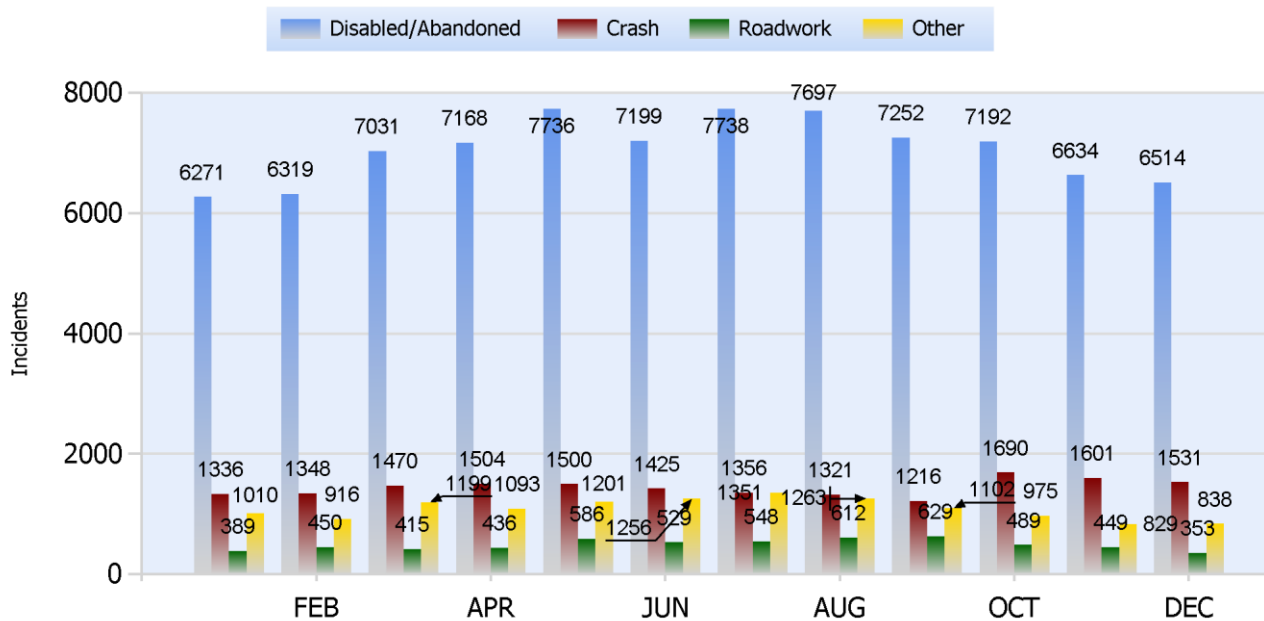
TDOT Statewide Yearly Report



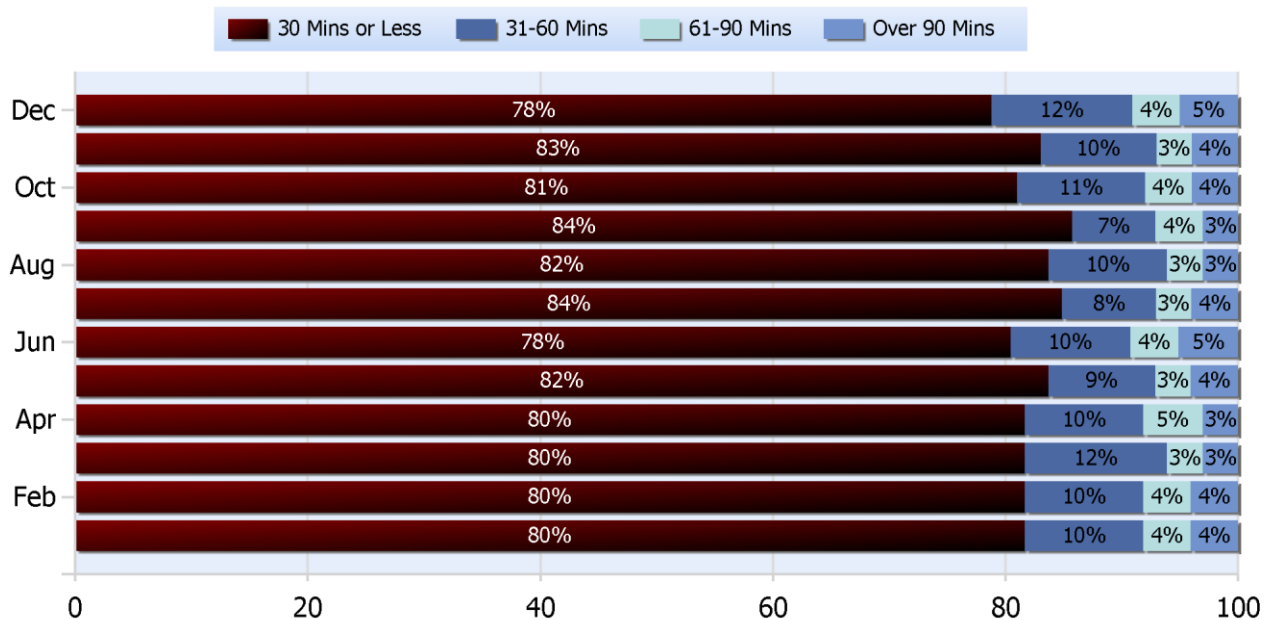
Year 2019

Total Incidents Managed This Year: 124527

Total Roadway Incidents



Lane Blockage Clearance Times Overall





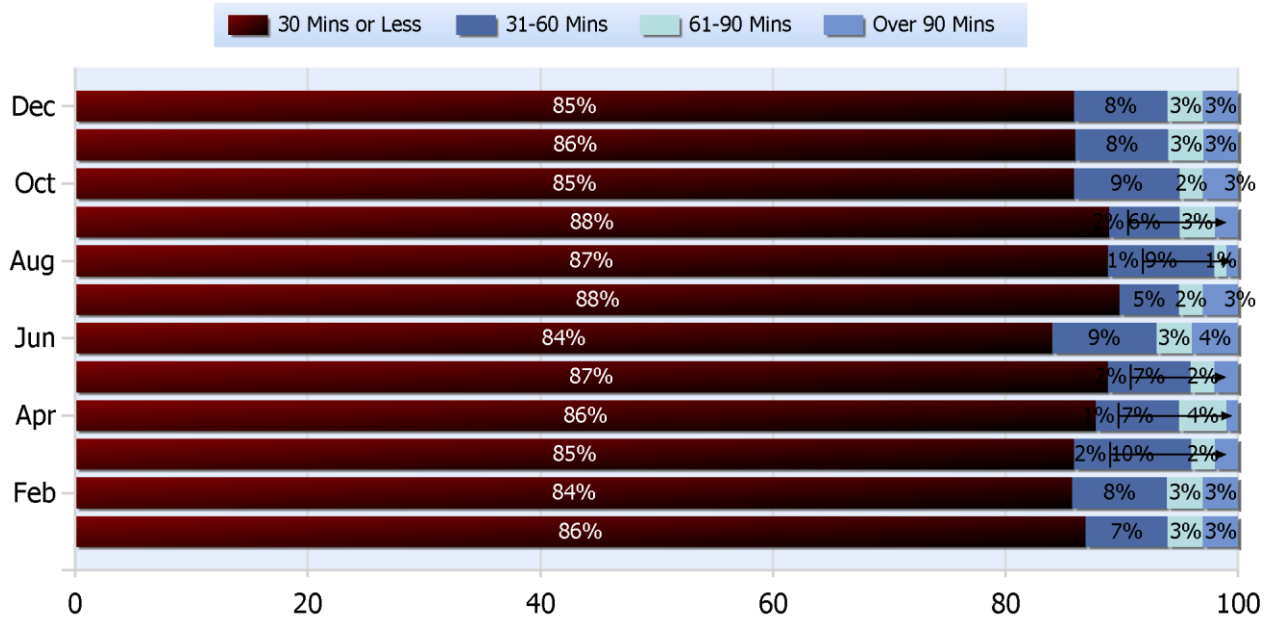
TDOT Statewide Yearly Report



Year 2019

Total Incidents Managed This Year: 124527

Lane Blockage Clearance Times Urban





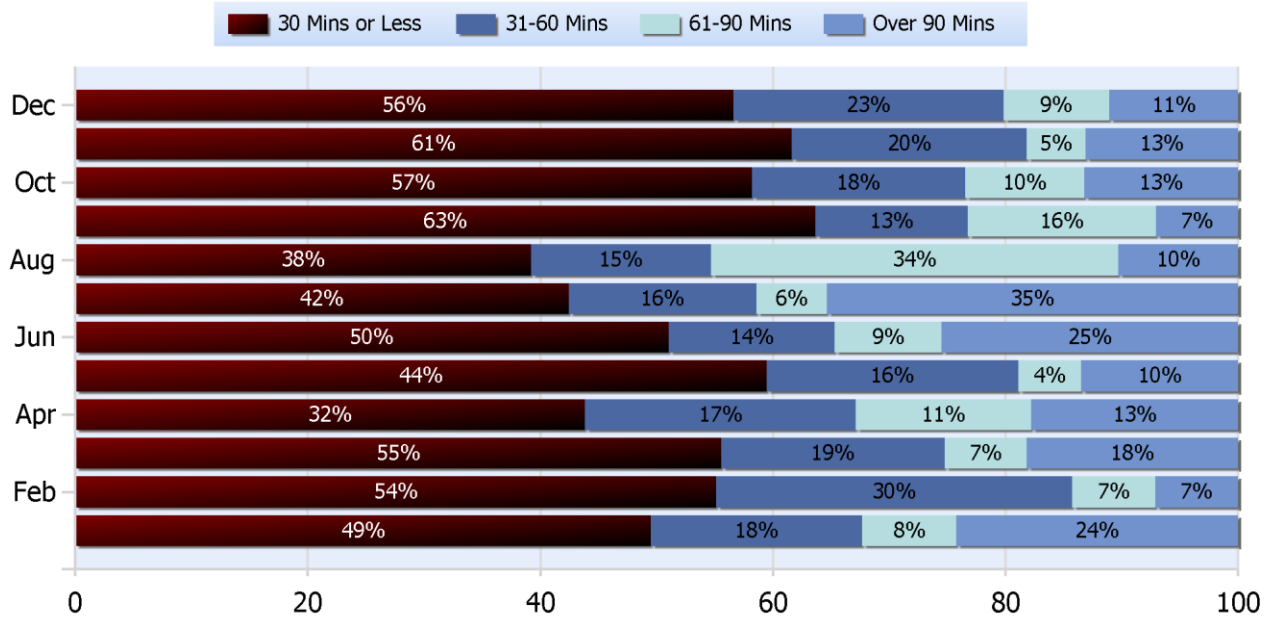
TDOT Statewide Yearly Report



Year 2019

Total Incidents Managed This Year: 124527

Lane Blockage Clearance Times Rural





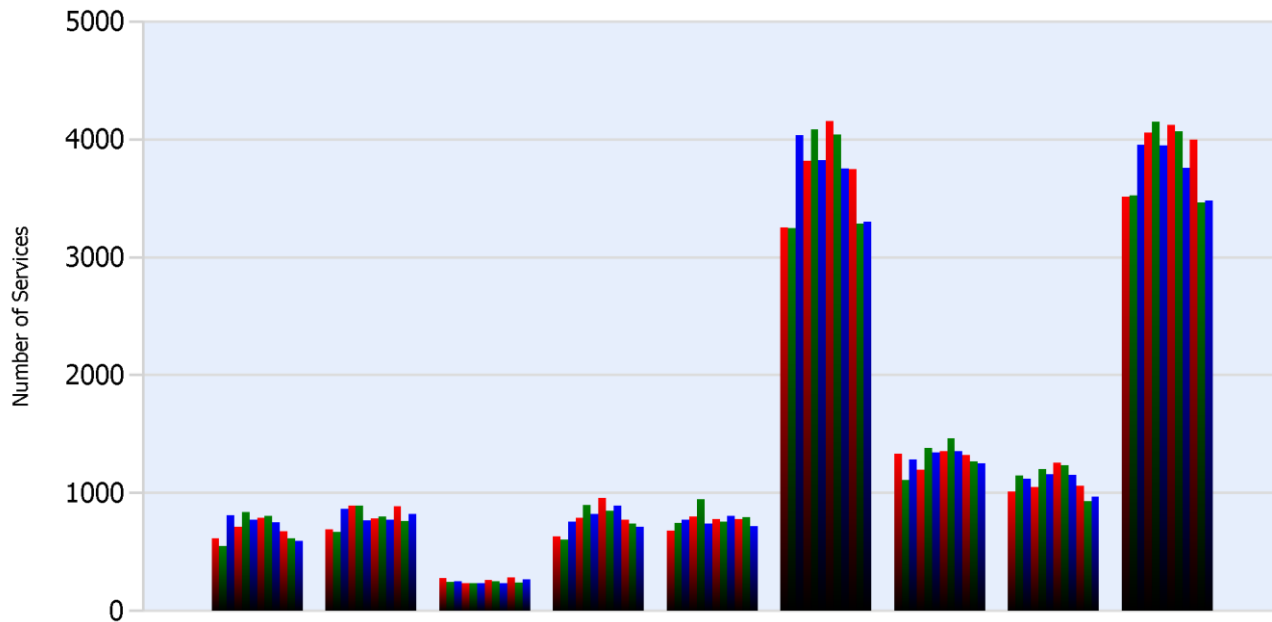
TDOT Statewide Yearly Report



Year 2019

Total Incidents Managed This Year: 124527

HELP Services Provided



Month	Debris	Tire	Fuel	Mech	Jump	Traffic Ctrl	Tag	No Service	Other
JAN	618	1012	695	631	279	3513	1336	682	3251
FEB	549	1147	670	608	248	3524	1110	747	3247
MAR	811	1121	865	760	252	3956	1287	772	4036
APR	717	1051	894	788	234	4059	1196	800	3816
MAY	839	1206	894	901	239	4152	1382	947	4086
JUN	772	1159	769	826	238	3949	1346	743	3825
JUL	790	1257	785	960	265	4125	1357	780	4154
AUG	809	1234	799	852	254	4066	1462	759	4042
SEP	753	1153	777	895	237	3756	1354	807	3754
OCT	677	1063	889	776	286	3999	1325	778	3746
NOV	615	934	764	740	240	3464	1269	795	3284
DEC	594	972	826	714	270	3480	1250	720	3301

DMS Usage



TDOT Statewide Yearly Report



Year 2019

Total Incidents Managed This Year: 124527

	Jan	Feb	Mar	Apr
Average % ON Time	30.8	31.175	22.45	26.65
Average Post Time	4.8	4.45	5.05	5.35
Avg Messages Per Sign	56.275	51.675	42.2	49.175
Total Messages Posted	11201	10391	7780	9791



TDOT Statewide Yearly Report



Year 2019

Total Incidents Managed This Year: 124527

May	Jun	Jul	Aug	Sep	Oct
26.95	28.975	26.625	30.7	29.7	27.525
4.35	3.825	3.95	4.725	4.125	3.925
59.1	57.075	58.975	56.225	54.8	62.15
11869	11649	12330	11565	11253	12754



TDOT Statewide Yearly Report



Year 2019

Total Incidents Managed This Year: 124527

Nov	Dec	Annual
24.675	28.425	27.88125
3.725	5.2	4.4375
55.15	56.05	54.9125
11310	11417	133310



TDOT Statewide Yearly Report



Year 2019

Total Incidents Managed This Year: 124527

Events Affecting Traffic This Year:

R1

- March 23, 2019 Incident # 209850 0217- 0522. I40EB 383MM, Multi-vehicle crash with detour and 2 fatalities.
- May 4, 2019 Incident # 212776 - 05:40 -10:29. I40 WB 385.4 MM. Multi-vehicle crash involving wrong way driver with fatality and detour.
- May 23, 2019 Incident # 214237 - 1811-2019. I275 NB 1MM. Multi-Vehicle crash with fatality, closed with detour. Motorcycle went from SB to NB side.
- June 29, 2019 Incident # 216767 - 1354-1804. I81 SB 62 MM. Multi- Vehicle Crash with 2 fatalities, closed with detour.
- December 15th, 2019 Incident # 228396 – 0455-1315. I40WB 387mm. Multi-vehicle crash with tanker carrying Haz-Mat, closed with detour on WB and EB sides.
- December 19th, 2019 Incident # 228695 – 1930-2242. I26WB 38MM. Multi vehicle crash with wrong way driver, with 3 fatalities, closed with detour

R2

- Jan 30, 2019 20:30—Jan 31, 2019 00:51 Inc# 156694 SR-58S mile marker 7.6 closed due to a fatal incident with pedestrian struck.
- Feb 25, 2019 22:37—Feb 26, 2019 00:38 Inc# 158320 SR-29N mile marker 30.5 closed due to fatal crash.
- April 1, 2019 Inc# 160666—11:31-12:50 75N mile marker 1.2 closed due to concrete rail collapsing onto roadway.
- June 7, 2019 Inc# 165496—06:58-10:00 24W mile marker 178.5 closed due to JK-TT that hit bridge with a diesel leak.
- July 28, 2019 Inc# 169252—09:29-22:51 40W mile marker 335 closed due to crash with 2 fatalities.
- Oct 22, 2019 Inc# 175303—08:39-11:15 SR-53S mile marker 12.9 closed due to multi vehicle crash with 2 fatalities.

R3

- January 24, 2019 Inc #324789 – 06:53-16:53 40e at mile marker 152.0 Multivehicle crash involving a tractor trailer and a double fatality.
- March 12, 2019 Inc #330807 – 14:32-3/13/19 00:23 65n mile maker 117 Single vehicle crash involving a tractor trailer and 1 fatality
- May 4, 2019 Inc #337747 – 18:56-5/5/19 01:34 65s at mile marker 108 closed due to a single vehicle tractor trailer crash hanging off a bridge.
- August 24, 2019 Inc #352791 – 09:38-6:56 40e mile marker 167 closed due to an overturned tractor trailer fully engulfed involving 2 fatalities.
- September 27, 2019 Inc #357244 – 09:00-3:19 65S mile marker 57 closed due to an injury crash with critical injuries and hazmat.
- December 30, 2019 Inc #368489 – 19:35-00:00 65S mile marker 95 closed due to single vehicle crash involving the fatality of a police officer.



TDOT Statewide Yearly Report



Year 2019

Total Incidents Managed This Year: 124527

Travel Lane Blockage Events:

Roadway	Incident Count	Incident %
I-140	58	3.425
I-24	4434	32.375
I-240	1650	37.225
I-26	60	3.6
I-275	81	4.85
I-40	5707	31.5875
I-440	869	8.675
I-55	670	15.225
I-640	167	9.95
I-65	2366	23.8
I-75	1719	24.7125
I-81	90	5.375
SR153	718	16.85
SR155	695	6.95
SR29	445	10.45
SR385	572	12.875
SR6	33	0.35