

13. Struck by Top Section of a Silo

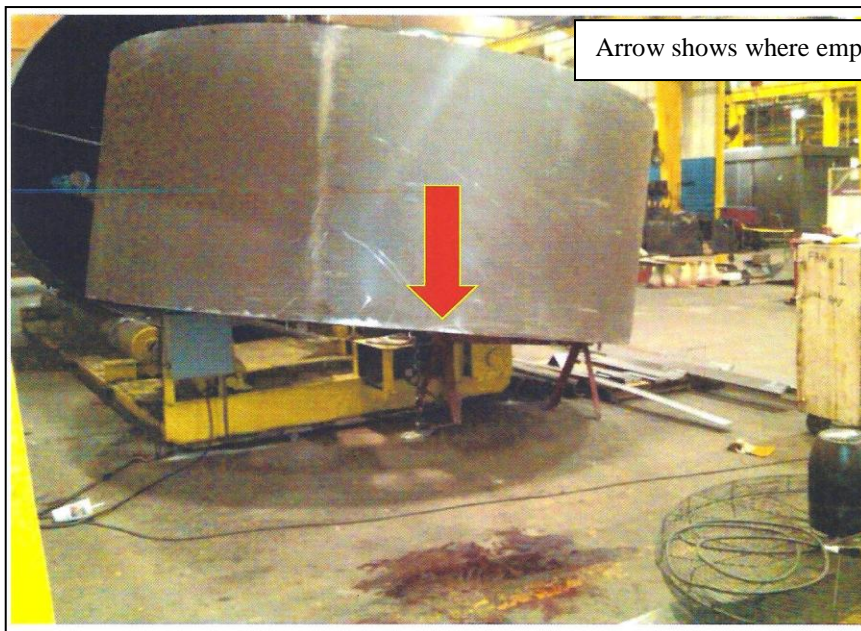
A **54-year-old** welder/cutter was killed while he and a co-worker were fabricating a lime silo. The silo consists for four sections: a bottom cone section, two center spool sections, and a head section. The employees were setting the head section to be fitted to the second spool section so they could be welded together. The bottom cone section and the first and second spool sections were already welded together. The victim used a 10-ton crane to set the head section on rollers and then detached it from the overhead crane. The victim operated the remote for the rollers and rotated the head section slowly so that the co-worker could push the head section close enough to the spool section so they could be welded together. There were three sections of rollers with a gap of approximately 23 inches between the center roller and the bottom roller, and a gap of approximately 11 inches between the top roller and the center roller. The head section was placed on the bottom and center rollers with approximately 16 feet of the head section not supported between the center and bottom roller. When the victim bumped the head section against the spool section, the head section became unbalanced on the rollers and flipped over backwards and struck the victim. The head section weighed about 6,000 pounds. First responders from the facility attended to the victim's head wound until the city's emergency paramedics arrived to begin CPR. Finally, CPR was discontinued when the victim was pronounced dead.

Citation(s) as Originally Issued

Additional citations were issued not related to the fatality.

Citation 1

Item 1 T.C.A. 50-3-1-5(1)	The employer did not furnish employment and a place of employment which were free from recognized hazards that were causing or likely to cause death or serious physical harm to employees in that the roller machine, located in the drag bay, had gaps between the rollers that prevented the head sections of silos from being adequately supported while the employees were in the immediate vicinity operating the rollers with a remote motor control unit.
Item 2 1910.135(a)(1)	The employer did not ensure that each affected employee wore a protective helmet when working in areas where there was a potential for injury to the head from falling objects.



Arrow shows where employee was struck