

#8: Fall – Inspection #317747582

A **45 year old male** employee dislocated his ankle when he fell from the second level of an elevated frame scaffold at approximately 3 feet high while installing decorative molding in residential construction. The company owned Gadsden mobile frame scaffold had been erected and used on the site for two weeks prior to the accident. The victim had erected the scaffold as the scaffold competent person. The employer provided a fall protection training certificate but did not provide documentation for scaffold competent person training. On the day of the incident, the victim returned from break when co-workers heard a noise. Co-workers found the victim who had apparently fallen into the center of the scaffold with his back resting on the lower deck board. The victim had dislocated his ankle. Co-workers observed the end of a deck board that the victim was working from to be unattached from the ladder run after the fall. The wheels of the frame were locked and no broken boards or missing braces to the frame were found. The victim’s foot was splinted at the jobsite and transported for medical treatment at a local Knoxville hospital. He was released by the hospital the day of the incident. The victim’s wife found him dead at his home early in the morning hours.

Citation(s) as Originally Issued

A complete inspection was conducted at the accident scene. Some of the items cited may not directly relate to the fatality.

Citation 1

Item 1a 1926.451(b)(1)	Each platform on all working levels of scaffolding were not fully planked or decked in that the Gadsden mobile frame scaffold was not fully decked, exposing two employees to a fall while working from the scaffold to install a reveal molding in the living room.
Item 1b 1926.451(f)(7)	Scaffolds were not erected, dismantled or altered under the supervision and direction of a competent person in that the scaffold competent person did not apply their knowledge when building the Gadsden mobile scaffold.
Item 1c 1926.454(a)	The employer did not have each employee who performs work while on a scaffold trained by a person qualified in the subject matter to recognize the hazards associated with the type of scaffold being used and to understand the procedures to control and minimize those hazards in that the employee had not received training on the hazards associated with working from the Gadsden mobile scaffold to install reveal molding in the living room.

#8: Fall – Inspection #317747582

Citation 2

Item 1 1926.50(c)	A person who has a valid certificate in first-aid training was not available to the worksite to render first-aid in that there was not a person trained to render first aid treatment to injured employees.
-------------------	---

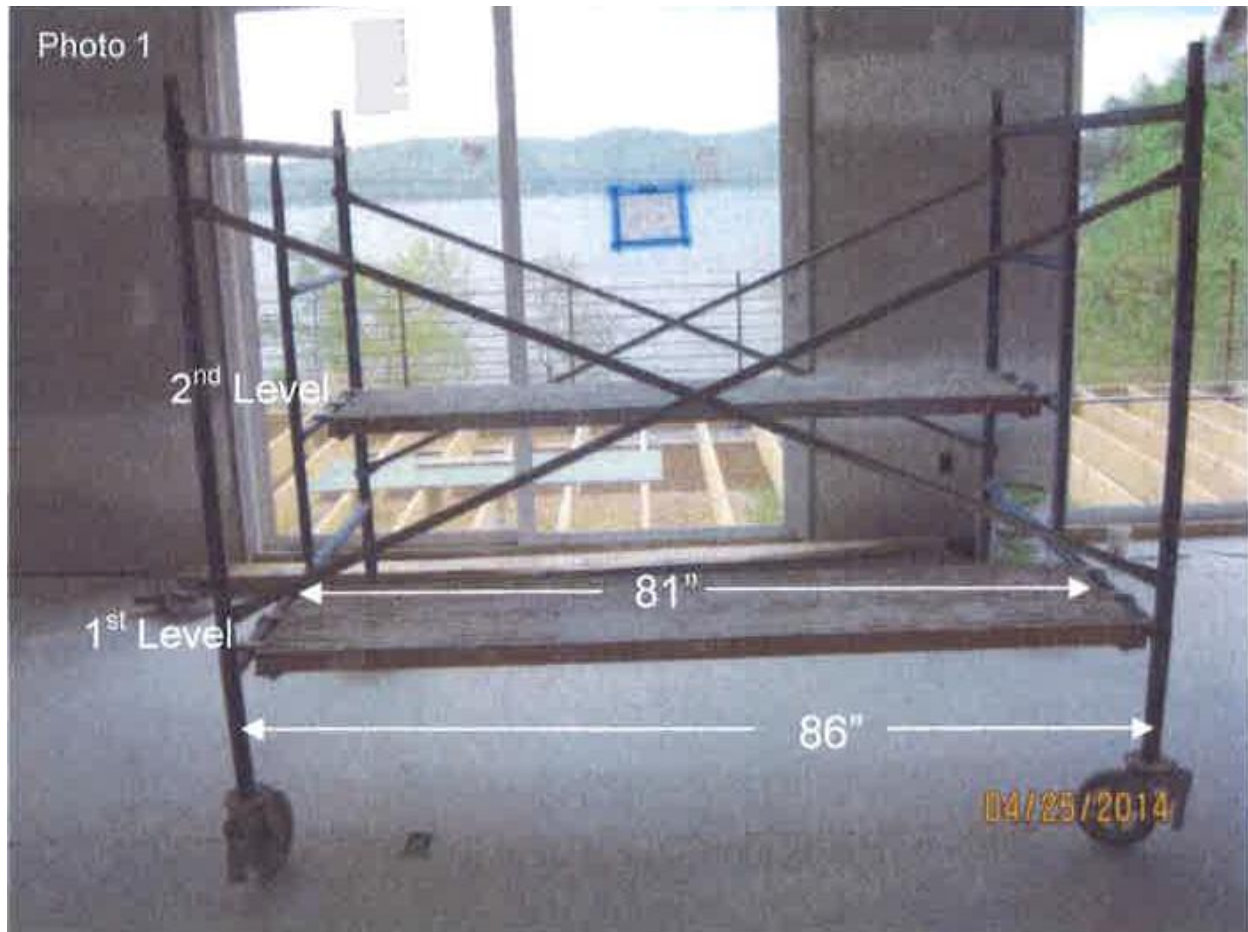


Photo 1 of 2 – Gadsen mobile frame scaffold.
The victim was working on the 2nd level.

#8: Fall – Inspection #317747582



Photo 2 of 2 – Gadsen mobile frame scaffold.
The victim was working on the 2nd level