



FY 2011 Statistical Abstract

Prepared: October 2011

By:

***Tennessee Department of Correction
Decision Support: Research & Planning Division***

**The Tennessee Department of Correction
Fiscal Year 2010 – 2011 Statistical Abstract
Coordinated and Published by**

Decision Support: Research & Planning Division

Dr. Mary Karpos, Director
Michael Gasiiecki, Statistical Analyst Supervisor
Tanya Washington, Budget Analyst Coordinator
Tim Oliver, Administrative Services Assistant

**To request a copy of this report, or other research information,
contact us at**

Telephone: 615-741-1000 ext. 8153

Email: planning.research@tn.gov

Visit the TDOC website: www.tn.gov/correction

Pursuant to the State of Tennessee's policy on nondiscrimination, the Department of Correction does not discriminate on the basis of race, gender, religion, color, national or ethnic origin, age, pregnancy, creed, disability, or veteran's status in its policies, or in the admission of or access to, or treatment or employment in, its programs, services, or activities.

Equal Employment Opportunity/Affirmative Action inquiries or complaints should be directed to the Department of Correction, EEO/AA Coordinator, Human Resources Office, 3rd Floor Rachel Jackson Building, 320 Sixth Avenue North, Nashville, TN 37243-0465, Telephone 615-741-1000 ext. 8026 or TDD (for persons with hearing impairments), 615-532-4423.

ADA inquiries or complaints should be directed to the Department of Correction, Human Resources Office, 3rd Floor Rachel Jackson Building, 320 Sixth Avenue North, Nashville, TN 37243-0465, Telephone 615-741-1000 ext. 8026 or TDD (for persons with hearing impairments), 615-532-4423.

TABLE OF CONTENTS

BUDGET & STAFFING	7
Personnel by Race and Sex	9
Personnel by Class	9
Correctional Officer Series Vacancy Rates	10
Correctional Officer Series	11
Authorized Full Time Equivalents (FTE'S)	11
Facility Staffing vs. Inmate Average Daily Population	12
Salary Comparisons	13
Correctional Officer Turnover Rate	14
Budget Recommendations by Function of Government	15
POPULATION, CAPACITY & TRENDS	17
Institutional Capacity & Population Distribution	19
Operating Capacity vs. Inmate Population Projections	19
Total Felon Population (Historical and Projected)	20
Unmet Bed Demand by Sex	20
Total Felon Population	21
Year-End Inmate Population Trends	21
Fiscal Year-End Incarcerated Felon Population	22
Felony Inmate Population by Age	23
Felony Inmate Population by Sex and Race	24
Felony Inmate Population by Sex, Race, and Location	24
Local Jail Census	25
Average Sentence Length by Primary Offense (Stock Population Detail)	26
Average Sentence Length by Primary Offense (Admissions)	27
Average Time Served by Primary Offense (Releases by Location)	28
Average Time Served by Primary Offense (Releases by Type)	29
Yearly Admissions and Releases	30
Felony Admissions by Type	30
Felony Releases by Type	30
Felony Admissions by Age, Race, and Sex	31
Felony Releases by Age, Race, and Sex	31
Admissions by Geographical Region	32
Admissions by County of Conviction	33
Felon Population by County of Conviction	34
OFFENDER ACCOUNTABILITY, PROGRAMS & SERVICES	35
Total Hours and Estimated Value of Community Service Work	37
Community Service Hours Worked by Facility	37
Inmate Assignments	38
Drug Screens - Positive Drug Tests by Percentage	39
Educational Enrollment	40
Education Test Results	40
GED & Vocational Certificates	40
Chronic Disease Clinic Caseload	41
5-Year Analysis of Hospital Admissions	41
Major DSM Groups	42
INSTITUTIONS (DEMOGRAPHICS)	43
Facilities and Security Designations	45
Average Daily Population	46
Demographics by Facility	46
Facility Populations by Primary Offense	47
Incidents: FY 2010 - 2011	47
Incident Summary	48

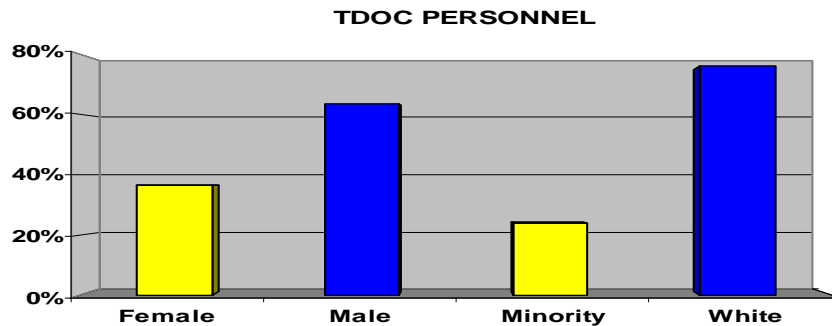
BUDGET AND STAFFING



The Central Office Human Resources section provides technical assistance and advice and ensures compliance with Civil Service Rules, EEOC/Affirmative Action, state law, and policies. This section also implements and monitors personnel-related programs such as employee relations, recruitment and retention, training, performance evaluations, employee transactions, and employee benefits, including accommodations under the Americans with Disabilities Act.

Personnel by Race and Sex: June 30, 2011

	Male	Female	Total
White	2,634	1,213	3,847
Minority	589	627	1,216
Total	3,223	1,840	5,063



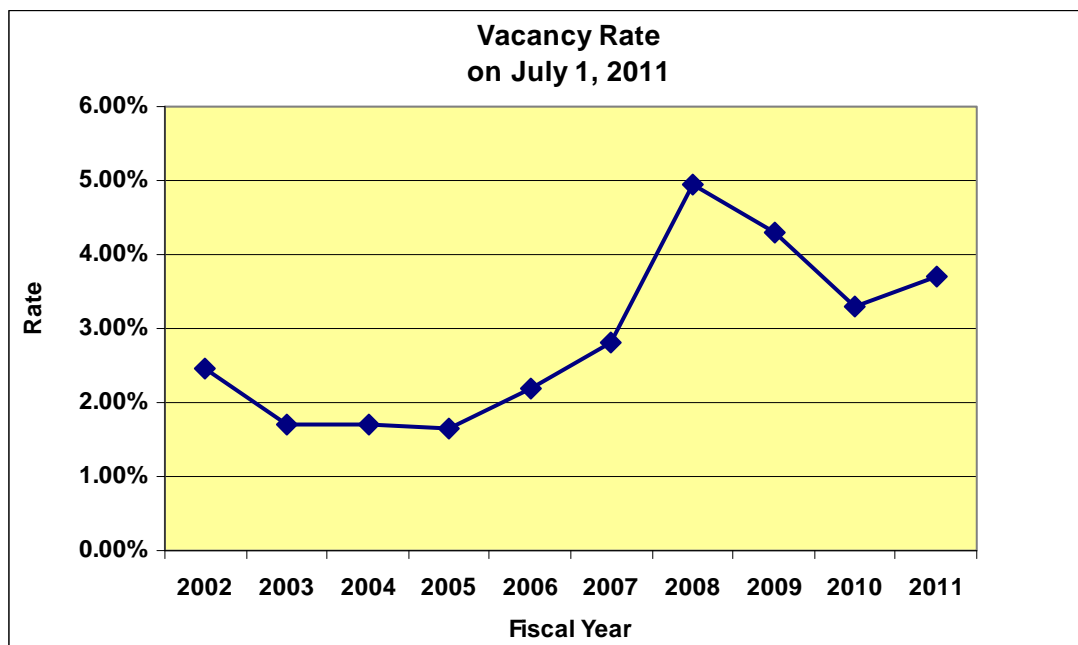
**Personnel by Class
June 30, 2011**

Personnel Type	FY10-11	FY09-10	FY08-09	FY07-08	FY06-07	FY05-06	FY04-05	FY03-04	FY02-03	FY01-02
Officials/ Administrators	2.2%	2.1%	2.1%	2.3%	2.2%	2.0%	2.0%	1.8%	1.8%	1.8%
Security	65.4%	64.7%	65.3%	64.0%	64.3%	64.4%	64.9%	62.0%	60.1%	62.6%
Maintenance	4.1%	4.4%	4.4%	4.3%	4.3%	4.4%	4.3%	1.2%	0.6%	1.2%
Professional	16.5%	16.9%	16.1%	16.5%	16.3%	16.1%	15.8%	14.4%	15.2%	13.9%
Skilled	1.9%	1.9%	2.0%	2.1%	2.1%	2.1%	2.1%	3.5%	3.5%	3.4%
Clerical	6.2%	6.5%	6.8%	7.4%	7.4%	7.5%	7.8%	6.1%	6.1%	6.6%
Technical	3.7%	3.6%	3.4%	3.4%	3.4%	3.5%	3.0%	6.3%	6.7%	7.1%
Para-Professional	0.0%	0.0%	0.0%	0.0%	0.0%	n/a	0.1%	4.8%	5.9%	5.2%

VACANCIES IN UNIFORMED STAFF

Correctional Officer Series Vacancy Rates from 2011

As of:	Vacant Positions	Total Positions	Vacancy Rate
7/1/2011	125	3,389	3.7%
7/1/2010	112	3,360	3.3%
7/1/2009	143	3,360	4.3%
7/1/2008	173	3,491	5.0%
7/1/2007	94	3,356	2.8%
7/1/2006	73	3,340	2.2%
7/1/2005	55	3,335	1.7%
7/1/2004	56	3,318	1.7%
7/1/2003	57	3,326	1.7%
7/1/2002	85	3,322	2.5%



The correctional officer vacancy rate saw a slight increase to 3.7% in FY 2011 following two years of decline. The lowest rate of the past 10 years was 1.7% in 2003, 2004, and 2005. The highest rate of the period occurred in 2008 when it reached 5.0%.

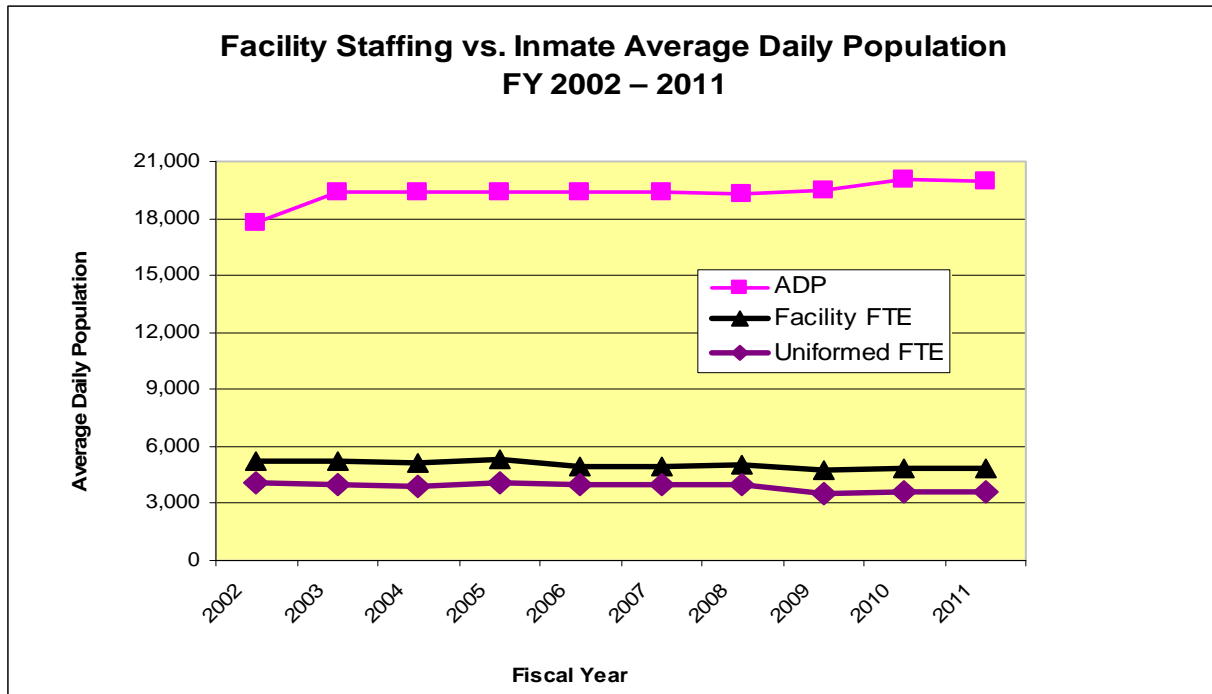
**Correctional Officer Series
June 30, 2011**

Positions	Correctional Officer	Correctional Clerical Officer	Corporal	Sergeant	Lieutenant	Captain	TOTAL
Total	2,490	132	445	184	79	59	3,389
Filled	2,431	125	406	167	77	58	3,264

AUTHORIZED FULLTIME EQUIVALENTS (FTE'S) in FY 2010 - 2011			
Facility	Uniformed	Non-Uniformed	Total
Morgan County Correctional Complex	535	171	706
Charles Bass Correctional Complex	262	55	317
DeBerry Special Needs Facility	245	252	497
Mark Luttrell Correctional Complex	126	46	172
Northeast Correctional Complex	382	126	508
Northwest Correctional Complex	490	168	658
Riverbend Maximum Security Institution	258	51	309
Southeastern Tennessee State Regional Facility	229	79	308
Tennessee Correction Academy	28	36	64
Tennessee Prison for Women	177	50	227
Turney Center Industrial Prison & Farm	322	80	402
West Tennessee State Penitentiary	517	156	673
Facility Subtotal	3571	1270	4841
Central Office	4	196	200
Total	3575	1466	5041
% of Total	71%	29%	

- 96% of the total authorized positions for TDOC are in correctional facilities.
- 71% of the total system-wide FTE's are in uniformed security

STAFFING TRENDS



Correctional facility staffing trends are presented in the graph above. They include data on total facility staffing (expressed in FTEs or full time equivalents) and uniformed security staffing levels as compared to the average daily inmate population

Between FY 2002 and FY 2011:

- Inmate average daily population increased by 12.5%
- Total facility staffing decreased by 8.0%
- Total uniformed security staffing decreased by 11.8%

SALARY COMPARISONS

The ability to recruit and retain qualified staff continues to be a concern for the Department. Because salary levels are critical in recruitment and retention of staff, the Department closely monitors other correctional and law enforcement agencies to compare its salaries with those offered by agencies performing similar functions.

State DOC	Average Starting Salary
Alabama	\$28,517
Missouri	\$27,660
Arkansas	\$27,492
Virginia	\$27,485
North Carolina	\$27,309
Tennessee	\$24,456
Georgia	\$24,322
Kentucky	\$23,346
Mississippi	\$22,006

When compared to other neighboring state correctional departments, TDOC ranks 6th in the average starting salary for correctional officers.

Source: Southern Legislative Conference, July 2010.

Federal Bureau of Prisons	\$38,619
Shelby County Sheriff's Office	\$34,861
Hamilton County Sheriff's Office	\$32,090
Davidson County Sheriff's Office	\$30,349
Knox County Sheriff's Office	\$27,973

TDOC also ranks low when compared to other correctional and law enforcement agencies located near some of our facilities. These are some of the agencies with whom we compete directly in the recruitment and retention of uniformed staff.

CORRECTIONAL OFFICER TURNOVER

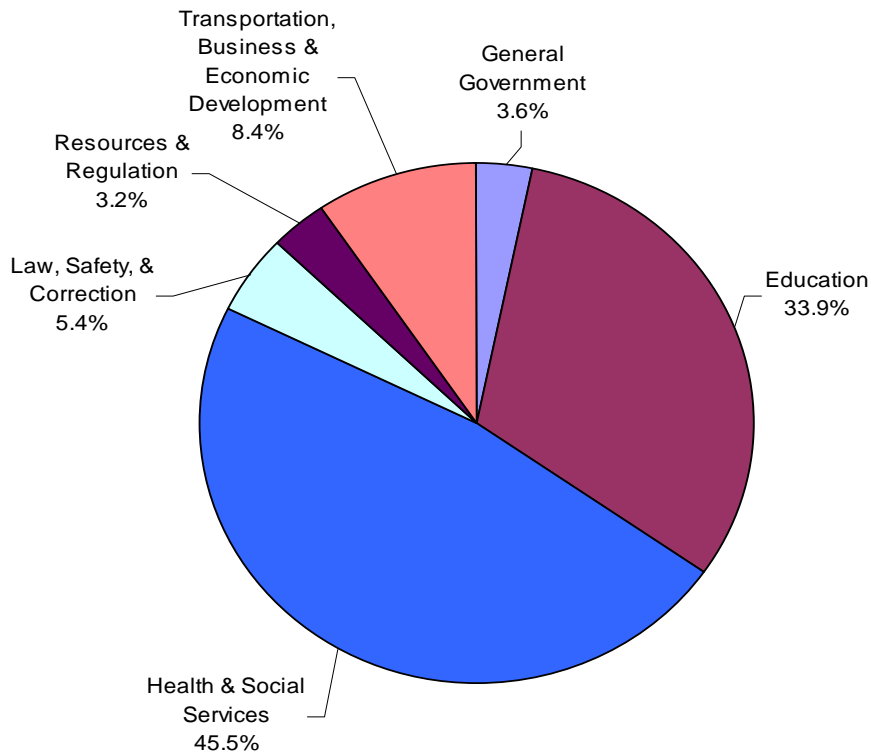
TDOC Correctional Officer Turnover Rates: FY 2010 - 2011

Institution		Correctional Officer Turnover Rate
Charles Bass Correctional Complex	CBCX	43.0%
DeBerry Special Needs Facility	DSNF	22.7%
Mark Luttrell Correctional Facility	MLCC	19.7%
Morgan County Correctional Complex	MCCX	24.5%
Northeast Correctional Complex	NECX	9.8%
Northwest Correctional Complex	NWCX	21.8%
Riverbend Maximum Security Institution	RMSI	42.5%
Southeastern TN State Regional Facility	STSRCF	12.4%
Tennessee Prison for Women	TPFW	49.4%
Turney Center Industrial Complex	TCIX	25.9%
West Tennessee State Penitentiary	WTSP	25.6%
System-wide		25.6%

In FY 2011, the correctional officer turnover rate was 25.6% system-wide. This represents an increase of 6.1 percentage points from the prior fiscal year rate of 19.5%. The turnover rate includes all correctional officers leaving positions, except those occurring when an employee is transferred or promoted within the TDOC system, and in the correctional officer series.

TDOC IN THE CONTEXT OF THE STATE BUDGET

FY 2010-2011 Total Budget Recommendations
By Function of Government



The Governor’s Budget included \$26.8 billion in recommended funding allocated by “functional area.” Total funding budgeted for the Department of Correction for FY 2011 was \$678,713,700.

POPULATION, CAPACITY, AND TRENDS



TDOC INSTITUTIONAL CAPACITY & POPULATION DISTRIBUTION

INSTITUTION	Total Beds Available	TDOC Operating Capacity	Assigned Count as of 6/30/2011	Population as a Percent of	
				Available Beds	Operating Capacity
GENERAL PURPOSE FACILITIES					
Charles Bass Correctional Complex (CBCX)	1,110	1,099	1,038	93.5%	94.4%
Hardeman County Correctional Center (HCCF)	2,016	1,976	1,990	98.7%	100.7%
Mark Luttrell Correctional Center (MLCC)	440	436	417	94.8%	95.6%
Northeast Correctional Complex (NECX)	1,856	1,819	1,785	96.2%	98.1%
Northwest Correctional Complex (NWCX)	2,425	2,377	2,397	98.8%	100.8%
South Central Correctional Facility (SCCF)	1,676	1,642	1,661	99.1%	101.2%
Southeastern TN State Regional Corr. Facility (STSRC)	981	971	945	96.3%	97.3%
Turney Center Industrial Complex (TCIX)	1,572	1,541	1,571	99.9%	101.9%
Whiteville Correctional Facility (WCFA)	1,536	1,505	1,518	98.8%	100.9%
SUB-TOTAL	13,612	13,366	13,322	97.9%	99.7%
CLASSIFICATION FACILITIES					
Tennessee Prison for Women (TPW)	805	789	790	98.1%	100.1%
SUB-TOTAL	805	789	790	98.1%	100.1%
SPECIAL PURPOSE FACILITIES					
DeBerry Special Needs Facility (DSNF)	800	736	693	86.6%	94.2%
SUB-TOTAL	800	736	693	86.6%	94.2%
HIGH SECURITY FACILITIES					
Morgan County Correctional Complex (MCCX)**	2,441	2,417	2,373	97.2%	98.2%
Riverbend Maximum Security Institution (RMSI)	736	714	709	96.3%	99.3%
West Tennessee State Penitentiary (WTSP)**	2,582	2,505	2,541	98.4%	101.4%
SUB-TOTAL	5,759	5,636	5,623	97.6%	99.8%
TOTALS	20,976	20,527	20,428	97.4%	99.5%

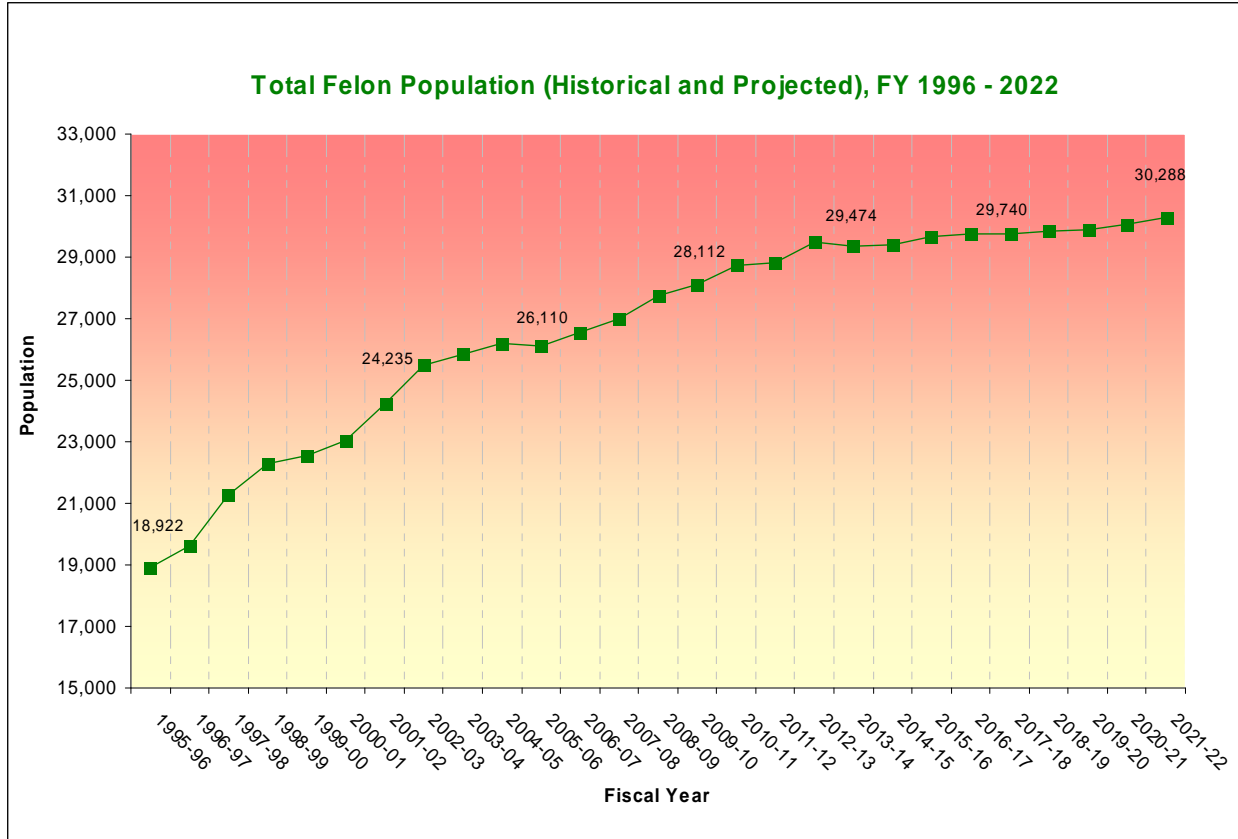
Source: TDOC Population Overview Report.

** MCCX serves as a classification facility to East Tennessee.

** WTSP also serves as a classification facility to West Tennessee.

OPERATING CAPACITY VS. INMATE POPULATION PROJECTIONS

Fiscal Year End June 30th	Operating Capacity	Projected Population	Unmet Bed Demand
2011	25,301	28,714	3,413
2012	25,446	28,843	3,397
2013	26,876	29,474	2,598
2014	26,876	29,367	2,491
2015	26,876	29,413	2,537
2016	26,876	29,673	2,797
2017	26,876	29,740	2,864
2018	26,876	29,765	2,889
2019	26,876	29,850	2,974
2020	26,876	29,891	3,015
2021	26,876	30,087	3,211
2022	26,876	30,288	3,412



UNMET BED DEMAND BY SEX

Fiscal Year End	Operating Capacity		Projected Population		Unmet Bed Demand	
	Males	Females	Males	Females	Male	Females
2011	23,368	1,933	26,101	2,613	2,733	680
2012	23,513	1,933	26,218	2,625	2,705	692
2013	24,943	1,933	26,792	2,682	1,849	749
2014	24,943	1,933	26,695	2,672	1,752	739
2015	24,943	1,933	26,736	2,677	1,793	744
2016	24,943	1,933	26,973	2,700	2,030	767
2017	24,943	1,933	27,034	2,706	2,091	773
2018	24,943	1,933	27,056	2,709	2,113	776
2019	24,943	1,933	27,134	2,716	2,191	783
2020	24,943	1,933	27,171	2,720	2,228	787
2021	24,943	1,933	27,349	2,738	2,406	805
2022	24,943	1,933	27,532	2,756	2,589	823

FELON POPULATION TRENDS

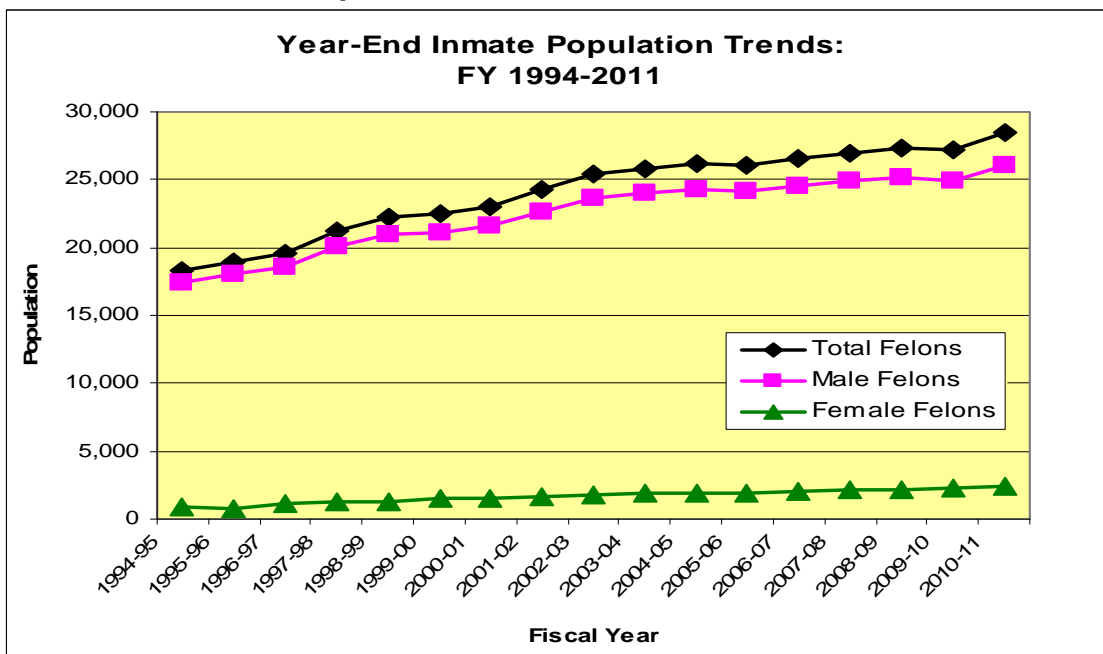
The felon population data included in this annual report is from the Tennessee Offender Management Information System (TOMIS) unless otherwise stated. Data from other sources may vary from TOMIS due to the time delay in the TOMIS data entry process. In some cases information is not received until several months after sentencing, admissions, release, etc. The data on this page and page 23 are from TDOC monthly population reports.

Total Felon Population: June 30, 2011

County/Local Jails	
Locally Sentenced	4,349
TDOC Backup	3,696
TDOC Prisons	
20,428	
Community Supervision	
Parole	12,520
Probation	53,573
Community Corrections	7,590
TOTAL	
102,156	

Source: Tennessee Felon Population Update

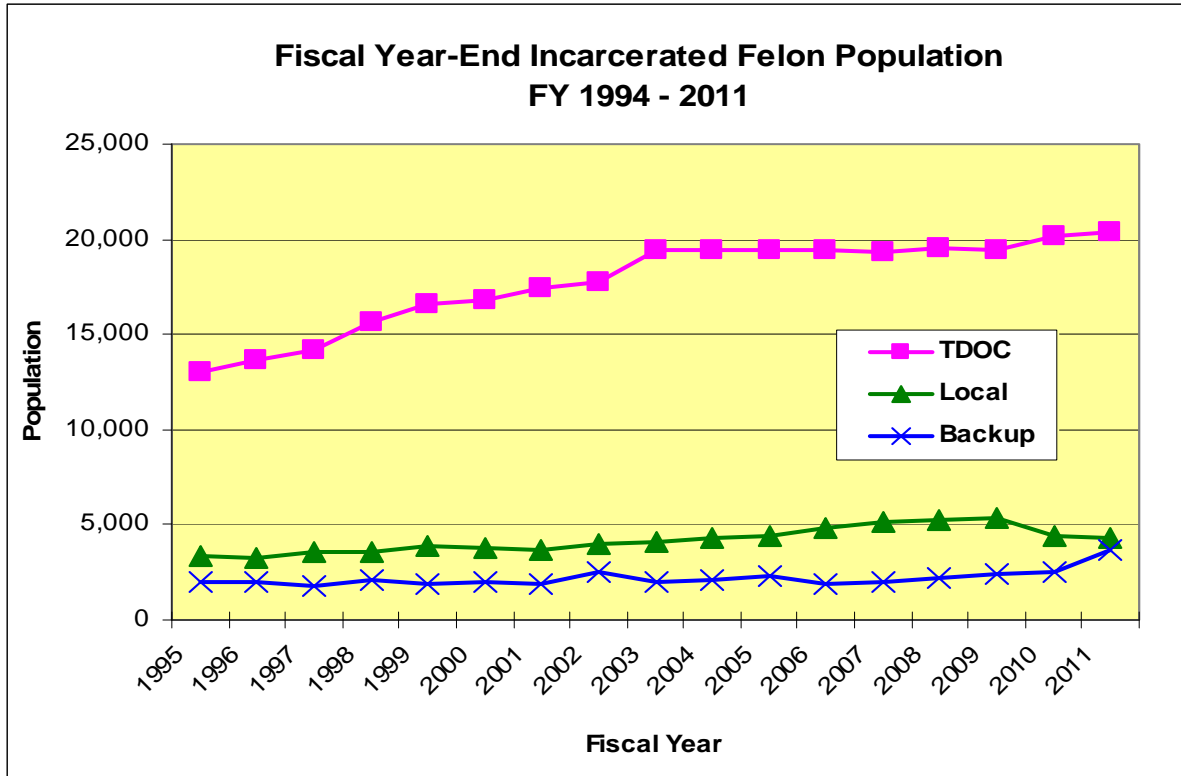
Fiscal Year-End Inmate Population Trends



Over the past 18 fiscal years (1994 -2011), the incarcerated felon population (including TDOC backup and locally sentenced felons) has increased 68.6% (from 16,884 to 28,473). The male and female felon population increased 60.9% and 248.4% respectively during this same period.

During the past fiscal year, the total incarcerated felon population increased from 27,164 in June 2010 to 28,473 in June 2011, an increase of 4.8%. The male felon population increased 4.5% and the female felon population increased 8.9% during FY 2011.

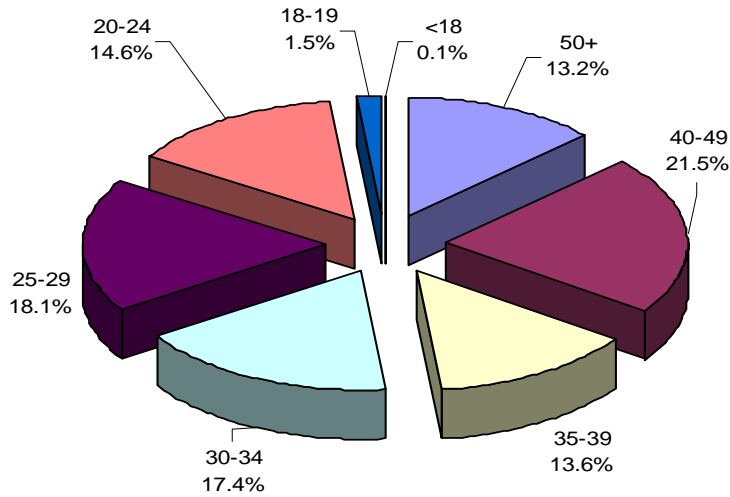
Annual Fiscal Year-End Incarcerated Felon Population: FY 1994 - 2011



Since 1994, the TDOC in-house population has increased 62.8% (from 12,546 to 20,428). TDOC backup was 196.6% higher in June 2011 than in June 1994 (from 1,246 to 3,696); locally sentenced felons have increased 40.7% during this same period (from 3,092 to 4,349).

FELONY INMATE DEMOGRAPHICS: AGE, SEX, RACE

**Felony Inmate Population by Age
(System-wide)
June 30, 2011**

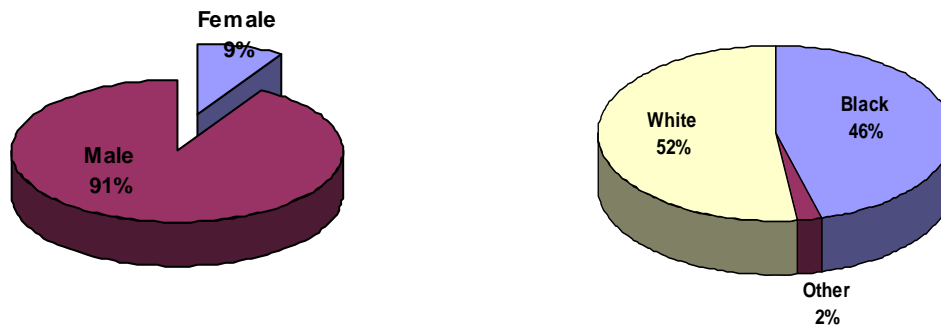


Felony Inmate Population by Age: June 30, 2011

	TDOC INHOUSE	%	TDOC BACKUP	%	LOCAL FELON	%	SYSTEM- WIDE	%
50+	3,164	15.6%	334	6.9%	294	8.2%	3,792	13.2%
40-49	4,665	22.9%	916	18.9%	607	16.9%	6,188	21.5%
35-39	2,837	14.0%	725	15.0%	360	10.1%	3,922	13.6%
30-34	3,503	17.2%	928	19.2%	562	15.7%	4,993	17.4%
25-29	3,381	16.6%	1036	21.4%	780	21.8%	5,197	18.1%
20-24	2,535	12.5%	833	17.2%	834	23.3%	4,202	14.6%
18-19	228	1.1%	68	1.4%	134	3.7%	430	1.5%
<18	21	0.1%	3	0.1%	6	0.2%	30	0.1%
Unknown	0	0.0%	1	0.0%	5	0.1%	6	0.0%
TOTAL	20,334	100%	4,844	100%	3,582	100%	28,760	100%

Source: Tennessee Offender Management Information System

**Felony Inmate Population by Sex and Race
(System-wide)
June 30, 2011**



**Felony Inmate Population by Sex, Race, and Location
June 30, 2011**

	TDOC	%	Backup	%	Local	%	System-Wide
Male							
Black	9,161	47.9%	1,182	29.9%	2,187	68.9%	12,530
White	9,468	49.5%	2,716	68.6%	916	28.9%	13,100
Other	501	2.6%	61	1.5%	71	2.2%	633
Total Male	19,130	100.0%	3,959	100.0%	3,174	100.0%	26,263
Female							
Black	374	31.1%	94	10.6%	166	40.7%	634
White	807	67.0%	787	88.9%	241	59.1%	1835
Other	23	1.9%	4	0.5%	1	0.2%	28
Total Female	1,204	100.0%	885	100.0%	408	100.0%	2,497
TOTAL	20,334	70.6%	4,844	16.9%	3,582	12.5%	28,760

Source: Tennessee Offender Management Information System

LOCAL JAIL CENSUS

Local Jail Census: FY 2010 - 2011

	JULY	AUG	SEPT	OCT	NOV	DEC	JAN	FEB	MAR	APR	MAY	JUNE
Total Jail Population	26,558	26,487	26,719	27,109	26,260	25,178	26,569	26,622	26,843	27,530	27,561	27,597
TDOC Backup	2,589	2,644	2,619	2,613	2,792	2,843	2,980	3,141	3,073	3,191	3,407	3,696
Local Felons	4,415	4,456	4,580	4,538	4,669	4,589	4,522	4,671	4,537	4,592	4,588	4,349
Other Convicted Felons	986	909	937	943	836	852	941	817	836	954	924	699
Convicted Misdemeanants	5,568	5,095	5,187	5,188	5,010	4,517	4,967	4,951	5,218	5,438	5,150	5,344
Others	974	1048	1003	963	920	899	939	952	990	1,183	953	914
Pre-trial Detainees												
Felony	8,611	8,888	8,878	9,185	8,677	7,522	7,714	7,537	7,633	8,637	8,739	8,939
Misdemeanant	3,415	3,447	3,515	3,679	3,356	3,956	4,506	4,553	4,556	3,535	3,800	3,656
Percentage of Jail Population												
TDOC Backup	9.7%	10.0%	9.8%	9.6%	10.6%	11.3%	11.2%	11.8%	11.4%	11.6%	12.4%	13.4%
Local Felons	16.6%	16.8%	17.1%	16.7%	17.8%	18.2%	17.0%	17.5%	16.9%	16.7%	16.6%	15.8%
Other Convicted Felons	3.7%	3.4%	3.5%	3.5%	3.2%	3.4%	3.5%	3.1%	3.1%	3.5%	3.4%	2.5%
Convicted Misdemeanants	21.0%	19.2%	19.4%	19.1%	19.1%	17.9%	18.7%	18.6%	19.4%	19.8%	18.7%	19.4%
Others	3.7%	4.0%	3.8%	3.6%	3.5%	3.6%	3.5%	3.6%	3.7%	4.3%	3.5%	3.3%
Pre-trial Detainees												
Felony	32.4%	33.6%	33.2%	33.9%	33.0%	29.9%	29.0%	28.3%	28.4%	31.4%	31.7%	32.4%
Misdemeanant	12.9%	13.0%	13.2%	13.6%	12.8%	15.7%	17.0%	17.1%	17.0%	12.8%	13.8%	13.2%

Source: TDOC Jail Summary Report as of June 30, 2011

Average Sentence Length by Primary Offense In-house Population Detail

**Felony Inmate Population:
Average Total Sentence Length by Primary Offense: FY 2010 - 2011**

PRIMARY OFFENSE GROUP	TDOC INHOUSE			TDOC BACKUP			LOCALLY SENTENCED			SYSTEMWIDE				
	NUMBER OF OFFENDERS	% OF TDOC INHOUSE	AVERAGE SENTENCE (Y/Y/MM)	NUMBER OF OFFENDERS	% OF TDOC BACKUP	AVERAGE SENTENCE (Y/Y/MM)	NUMBER OF OFFENDERS	% OF LOCALLY SENTENCED	AVERAGE SENTENCE (Y/Y/MM)	NUMBER OF OFFENDERS	% OF SYSTEM-WIDE	AVERAGE SENTENCE (Y/Y/MM)		
PERSON	Homicide	3,856	18.96%	28/10	42	0.87%	20/11	24	0.67%	06/00	3,922	13.64%	28/01	
	Murder	12	0.06%	07/07	7	0.14%	04/00	7	0.20%	03/03	26	0.09%	05/06	
	Negligent Manslaughter	252	1.24%	22/10	13	0.27%	06/10	16	0.45%	05/06	281	0.88%	21/00	
	Sex Offenses	2,754	13.54%	24/03	95	1.96%	09/05	57	1.59%	04/10	2,906	10.10%	23/04	
	Forcible Non-Forcible	130	0.64%	09/06	60	1.24%	03/06	15	0.42%	03/03	205	0.71%	07/04	
	Assault	2,455	12.07%	15/05	375	7.74%	05/10	366	10.22%	04/05	3,196	11.11%	13/00	
	Aggravated Assault	34	0.17%	05/01	63	1.30%	03/02	32	0.88%	02/00	129	0.45%	03/04	
	Simple Assault	99	0.49%	15/00	21	0.43%	05/04	10	0.28%	04/08	130	0.45%	12/08	
	Arson	1,719	8.45%	10/00	819	16.91%	05/01	609	17.00%	04/00	3,147	10.94%	07/07	
	Burglary	284	1.45%	07/09	288	5.95%	03/10	121	3.38%	03/01	703	2.44%	05/04	
PROPERTY	Forgery/Fraud	764	3.76%	08/01	525	10.84%	04/03	349	9.74%	03/03	1,638	5.70%	05/10	
	Larceny/Theft	2,729	13.42%	17/04	236	4.87%	10/08	93	2.60%	06/06	3,058	10.63%	16/06	
	Robbery	547	2.69%	09/00	126	2.60%	06/06	158	4.41%	04/09	831	2.89%	07/09	
	Aggravated Robbery	2,078	10.22%	12/10	528	10.90%	08/08	517	14.43%	04/05	3,123	10.86%	10/11	
	All Other Robbery	1,301	6.40%	10/06	942	19.45%	05/03	351	9.80%	04/02	2,594	9.02%	07/09	
	Drug Offenses	189	0.93%	15/08	29	0.60%	09/03	8	0.22%	05/08	226	0.79%	14/06	
	Cocaine	61	0.30%	05/08	52	1.07%	03/03	21	0.59%	02/03	134	0.47%	04/02	
	Other Drug Offenses	265	1.30%	21/04	11	0.23%	06/04	4	0.11%	05/06	280	0.97%	20/06	
	Vehicle/Homicide/DUI	100	0.49%	08/09	45	0.93%	04/08	44	1.23%	04/03	189	0.66%	06/09	
	All Other Vehicular	108	0.53%	13/05	57	1.18%	04/08	47	1.31%	03/09	212	0.74%	08/11	
SOCIAL	Escape	10	0.05%	06/05	6	0.12%	05/04	6	0.17%	02/05	22	0.08%	05/00	
	All Other	563	2.77%	07/00	504	10.40%	03/07	304	8.48%	02/11	1,371	4.77%	04/10	
	Unsentenced	14	0.07%	N/A	0	0.00%	00/00	423	11.81%	N/A	437	1.52%	N/A	
	TOTAL	20,334	100%	16/03	4,844	100%	05/09	3,582	100%	03/08	28,760	100%	12/08	
	OTHER	Sentence Type	88	1.39%	N/A	0	0.00%	N/A	0	0.00%	N/A	88	1.11%	N/A
		Death	2,152	33.90%	N/A	10	1.02%	N/A	0	0.00%	N/A	2,162	27.16%	N/A
		Life	3,915	61.66%	22/11	56	5.73%	14/03	2	0.32%	07/02	3,973	49.91%	22/10
		85+	194	3.06%	01/11	911	93.24%	1/10	632	99.66%	01/08	1,737	21.82%	01/09
		1-2 Years												

* 2,250 offenders with sentences of death (88), and life (2,162) are included in the TDOC counts; however, these offenders are not included in calculation of average sentence lengths.

Average Sentence Lengths by Primary Offense Admissions

Average Sentence Length by Primary Offense Group: FY 2010 - 2011
Felony Admissions

	PRIMARY OFFENSE GROUP	TDOC SENTENCED		LOCALLY SENTENCED		SYSTEMWIDE		
		Number of Offenders	% Of TDOC Total	Number of Offenders	% Of Local Total	System-wide Total	% Of System Total	Average Sentence (YY/MM)
PERSON	Homicide	258	2.23%	15	0.44%	273	1.82%	20/05
	Murder	18	0.16%	5	0.15%	23	0.15%	03/10
	Negligent Manslaughter	47	0.42%	9	0.26%	56	0.37%	11/11
	Kidnapping	335	2.97%	37	1.08%	372	2.48%	12/05
	Sex Offenses	128	1.14%	30	0.88%	158	1.05%	04/08
	Forcible Non-Forcible	997	8.85%	367	10.72%	1,364	9.10%	07/03
	Assault	123	1.08%	65	1.90%	188	1.25%	02/05
	Aggravated Assault	49	0.44%	6	0.18%	55	0.37%	07/03
	Simple Assault	1,725	15.32%	638	18.64%	2,363	15.76%	05/02
	Arson	600	5.33%	163	4.76%	763	5.09%	03/10
PROPERTY	Burglary	1,159	10.29%	466	13.62%	1,625	10.84%	03/11
	Forgery/Fraud	723	6.42%	78	2.28%	801	5.34%	12/01
	Larceny/Theft	370	3.29%	133	3.89%	503	3.35%	06/04
	Robbery	1,303	11.57%	407	11.89%	1,710	11.41%	08/05
	Aggravated Robbery	1,911	16.97%	428	12.51%	2,339	15.60%	05/03
	All Other Robbery	58	0.52%	2	0.06%	60	0.40%	09/07
	Drug Offenses	131	1.16%	45	1.32%	176	1.17%	02/06
	Cocaine	56	0.50%	6	0.18%	62	0.41%	13/00
	Other Drug Offenses	92	0.82%	50	1.46%	142	0.95%	04/6
	Vehicular	127	1.13%	70	2.05%	197	1.31%	05/01
SOCIAL	Vehicular Homicide/DUI	7	0.06%	11	0.32%	18	0.12%	02/11
	All Other Vehicular	1045	9.28%	390	11.40%	1,435	9.57%	03/01
	C/S/F Person*	0	0.00%	1	0.00%	309	2.06%	N/A
	C/S/F Property*	56	0.50%	6	0.18%	62	0.41%	13/00
	C/S/F Societal/Drugs*	92	0.82%	50	1.46%	142	0.95%	04/6
	Escape	127	1.13%	70	2.05%	197	1.31%	05/01
	All Other	7	0.06%	11	0.32%	18	0.12%	02/11
	Unknown**	1045	9.28%	390	11.40%	1,435	9.57%	03/01
	TOTAL	11,262	100%	3,422	100%	14,993	100%	06/02
	OTHER	Sentence Type						
Death		3	0.03%	0	0.00%	3	0.02%	N/A
Life		98	0.87%	0	0.00%	98	0.65%	N/A
85% 1-2 Years		380	3.37%	2	0.06%	382	2.55%	19/08

* C/S/F refers to non-substantive offenses such as conspiracy, solicitation, facilitation, aiding, and abetting, etc

** The 309 offenders with unknown primary group represent those with unprocessed judgment orders. 101 offenders with sentences of life (98) and death (3) are included in the TDOC counts, but are not included in the calculation of average sentence lengths.

Average Time Served by Primary Offense Releases by Location

Average Time Served by Location: FY 2010 - 2011 Felony Releases													
Primary Offense Category	TDOC IN HOUSE			TDOC BACKUP			LOCALLY SENTENCED			SYSTEMWIDE			
	Number of Offenders	%	Average Time Served (YY/MM)	Number of Offenders	%	Average Time Served (YY/MM)	Number of Offenders	%	Average Time Served (YY/MM)	Number of Offenders	%	Average Time Served (YY/MM)	
PERSON	Homicide												
	Murder	186	3.24%	18/02	15	0.32%	07/06	12	0.29%	02/10	213	1.46%	16/08
	Negligent Manslaughter	9	0.16%	04/04	4	0.09%	02/10	5	0.12%	02/00	18	0.12%	03/05
	Kidnapping	44	0.77%	09/09	10	0.21%	02/05	7	0.17%	02/10	61	0.42%	07/09
	Sex Offenses												
	Forcible	301	5.24%	10/00	55	1.17%	04/00	46	1.11%	02/10	402	2.76%	08/04
	Non-Forcible	43	0.75%	09/04	63	1.34%	02/00	28	0.68%	01/05	134	0.92%	02/04
	Assault												
	Aggravated Assault	535	9.31%	06/02	288	6.14%	09/05	448	10.84%	02/06	1,271	8.73%	04/04
	Simple Assault	24	0.42%	02/07	71	1.51%	02/01	67	1.62%	01/03	162	1.11%	01/10
PROPERTY	Arson	32	0.56%	06/00	14	0.30%	09/07	5	0.12%	02/00	51	0.35%	05/00
	Burglary	882	15.34%	05/03	716	15.28%	02/10	744	18.01%	02/01	2,342	16.08%	03/06
	Forgery/Fraud	230	4.00%	09/11	403	8.60%	02/06	218	5.28%	02/00	861	5.84%	02/09
	Larceny/Theft	568	9.71%	04/01	563	12.01%	02/06	542	13.12%	01/11	1,663	11.42%	02/10
	Robbery												
	Aggravated Robbery	610	10.61%	09/00	160	3.41%	04/09	74	1.79%	02/07	844	5.79%	07/08
	All Other Robbery	233	4.05%	05/02	113	2.41%	09/05	130	3.15%	02/07	476	3.27%	04/01
SOCIAL	Drug Offenses												
	Cocaine Offenses	868	15.10%	06/03	492	10.50%	04/03	550	13.31%	03/01	1,910	13.11%	04/10
	Other Drug Offenses	606	10.54%	04/03	881	18.80%	02/05	621	15.03%	01/10	2,108	14.47%	02/09
	Vehicular												
	Vehicular Homicide/DUI	45	0.78%	05/04	12	0.26%	03/01	3	0.07%	01/10	60	0.41%	04/09
OTHER	All Other Vehicular	53	0.92%	02/05	94	2.01%	01/11	48	1.16%	01/11	195	1.34%	02/01
	C/S/F Person	47	0.82%	09/00	12	0.26%	02/01	15	0.36%	02/11	74	0.51%	06/08
	C/S/F Property	44	0.77%	05/10	44	0.94%	02/09	47	1.14%	02/01	135	0.93%	03/07
	C/S/F Societal/Drugs	47	0.82%	04/07	57	1.22%	03/01	74	1.79%	02/08	178	1.22%	03/04
	Escape	5	0.09%	05/01	8	0.17%	02/00	9	0.22%	01/00	22	0.15%	02/04
	All Other	347	6.04%	03/03	612	13.06%	02/00	438	10.60%	01/06	1,367	9.59%	02/02
	Unknown	0	0.00%	N/A	0	0.00%	N/A	0	0.00%	N/A	0	0.00%	N/A
TOTAL	5,749	100.0%	06/02	4,687	100.0%	02/10	4,131	100.0%	02/02	14,567	100.0%	04/00	

Average time served does not include four (6) modified judgement orders. Total releases are 14,573.

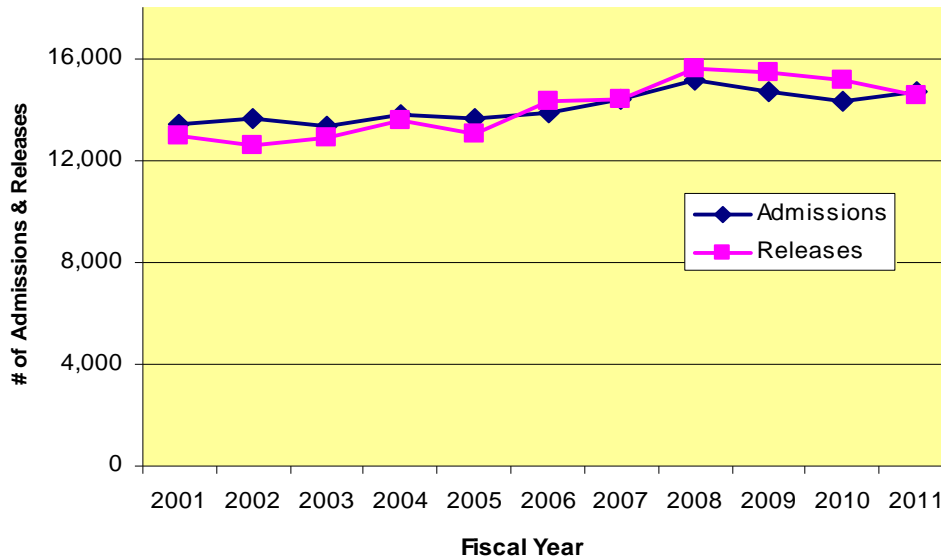
Average Time Served by Primary Offense Releases by Type

Felony Releases Average Time Served by Release Type: FY 2010 - 2011																			
PRIMARY OFFENSE GROUP	PAROLE			EXPIRATION			OTHER			PROBATION			COMMUNITY CORRECTIONS			SYSTEMWIDE			
	Number of Offenders	%	Average Time Served (YY/MM)	Number of Offenders	%	Average Time Served (YY/MM)	Number of Offenders	%	Average Time Served (YY/MM)	Number of Offenders	%	Average Time Served (YY/MM)	Number of Offenders	%	Average Time Served (YY/MM)	Number of Offenders	%	Average Time Served (YY/MM)	
PERSON	Homicide	98	2.17%	20/09	83	2.05%	13/00	17	6.91%	13/08	2	0.05%	00/06	3	0.26%	03/11	213	1.46%	16/08
	Murder	3	0.07%	06/03	11	0.24%	03/04	0	0.00%	N/A	4	0.10%	00/09	0	0.00%	N/A	18	0.12%	03/05
	Negligent Manslaughter	17	0.38%	03/04	35	0.77%	06/05	1	0.41%	03/05	5	0.12%	02/06	3	0.26%	01/06	61	0.42%	07/09
	Sex Offenses	199	4.41%	07/05	136	2.99%	11/02	18	7.32%	11/04	46	1.12%	03/05	3	0.26%	02/06	402	2.76%	08/04
	Forcible	2	0.04%	04/01	59	1.30%	03/00	1	0.41%	01/05	65	1.58%	01/09	7	0.61%	01/09	134	0.92%	02/04
	Non-Forcible	293	6.49%	06/10	583	12.84%	04/08	21	8.54%	04/07	302	7.32%	02/04	72	6.32%	02/07	1,271	8.73%	04/04
	Assault	12	0.27%	02/05	48	1.06%	02/010	5	2.03%	03/03	91	2.21%	01/02	6	0.53%	01/00	162	1.11%	01/10
	Aggravated Assault	19	0.42%	06/11	25	0.55%	04/10	0	0.00%	N/A	5	0.12%	03/07	2	0.18%	00/10	51	0.35%	05/00
	Simple Assault	686	15.18%	04/06	872	19.20%	04/01	31	12.60%	03/09	569	13.80%	01/11	184	16.14%	01/11	2,342	16.08%	03/06
	Arson	199	4.41%	03/09	234	5.15%	03/07	11	4.47%	03/03	343	8.32%	01/09	64	5.61%	01/09	851	5.84%	02/09
PROPERTY	Larceny/Theft	394	8.72%	04/00	494	10.88%	03/07	21	8.54%	03/09	620	15.03%	01/08	134	11.75%	02/01	1,663	11.42%	02/10
	Robbery	470	10.41%	07/10	317	6.98%	07/09	23	9.35%	09/07	20	0.48%	04/06	14	1.23%	02/06	844	5.79%	07/08
	Aggravated Robbery	179	3.96%	04/05	167	3.68%	04/06	6	2.44%	05/06	97	2.35%	02/09	27	2.37%	02/10	476	3.27%	04/01
	All Other Robbery	902	19.97%	05/05	446	9.82%	05/08	31	12.60%	04/11	315	7.64%	03/04	216	18.95%	02/09	1,910	13.11%	04/10
	Drug Offenses	628	13.91%	03/08	431	9.48%	03/11	32	13.01%	02/07	733	17.77%	01/08	284	24.91%	01/08	2,108	14.47%	02/09
SOCIAL	Cocaine Offenses	31	0.69%	04/07	19	0.42%	06/02	3	1.22%	03/03	3	0.07%	02/07	4	0.35%	01/06	60	0.41%	04/09
	Other Drug Offenses	20	0.44%	03/00	72	1.58%	02/07	2	0.81%	01/11	99	2.40%	01/05	2	0.18%	04/05	195	1.34%	02/01
	Vehicular Homicide/DUI	35	0.78%	07/09	27	0.58%	07/03	1	0.41%	01/08	9	0.22%	02/01	2	0.18%	01/07	74	0.51%	06/08
	All Other Vehicular	37	0.82%	05/04	42	0.92%	04/02	1	0.41%	04/05	48	1.16%	01/08	7	0.61%	02/06	135	0.93%	03/07
OTHER	CS/F Property	46	1.02%	04/04	49	1.08%	04/07	6	2.44%	01/07	62	1.50%	02/00	15	1.32%	01/03	178	1.22%	03/04
	CS/F Societal/Drugs	5	0.11%	05/01	7	0.15%	02/04	1	0.41%	01/02	9	0.22%	00/10	0	0.00%	N/A	22	0.15%	02/04
	Escape	241	5.34%	03/02	374	8.24%	03/02	14	5.69%	02/11	677	16.42%	01/04	91	7.98%	01/10	1,307	9.59%	02/02
	All Other	0	0.00%	N/A	0	0.00%	N/A	0	0.00%	N/A	0	0.00%	N/A	0	0.00%	N/A	0	0.00%	N/A
	Unknown*	4,516	100.00%	06/05	4,541	100.00%	04/10	246	100.00%	05/05	4,124	100.00%	01/10	1,140	100.00%	02/01	14,567	100.00%	04/00
TOTAL																			

Average time served does not include four (6) modified judgement orders. Total releases are 14,573.

ADMISSIONS AND RELEASES

Yearly Admissions and Releases
Fiscal Years 2001-2011



Admissions increased and releases declined in FY 2011. Admissions increased by 2.40% and releases decreased by 3.78%. However, admissions and releases were almost equal in number for the year.

Felony Admissions by Type: FY 2010 -2011

TYPE	TDOC	%	LOCAL	%	Unknown	%	SYSTEM-WIDE	%
Returned Escape & Others	138	1.2%	35	1.0%	8	2.6%	181	1.2%
Parole, Probation, & Comm.Corr. Violators	4,479	39.8%	899	26.3%	103	33.3%	5,481	36.6%
New Commitments	6,645	59.0%	2,488	72.7%	198	64.1%	9,331	62.2%
TOTAL	11,262		3,422		309		14,993	

Total admissions includes 309 unprocessed judgment orders.

Felony Releases by Type: FY 2010 – 2011

TYPE	TDOC	%	BACK-UP	%	LOCAL	%	UNKNOWN*	%	SYSTEM-WIDE	%
Parole	3,030	52.7%	869	18.5%	618	15.0%	0	0.0%	4,517	31.0%
Probation/Community Corrections	637	11.1%	2,462	52.5%	2,165	52.4%	1	25.0%	5,265	36.1%
Sentence Expiration	1,987	34.6%	1,246	26.6%	1,309	31.7%	3	75.0%	4,545	31.2%
Death	55	1.0%	1	0.0%	2	0.0%	0	0.0%	58	0.4%
Other	41	0.7%	109	2.3%	38	0.9%	0	0.0%	188	1.3%
TOTAL	5,750		4,687		4,132		4		14,573	

Felony Admissions by Age, Race, and Sex: FY 2010 – 2011

AGE	TDOC	%	LOCAL	%	Unknown	%	SYSTEM-WIDE	%
50+	884	7.8%	289	8.4%	29	9.4%	1202	8.0%
40-49	2,094	18.6%	594	17.4%	66	21.4%	2,754	18.4%
35-39	1,549	13.8%	394	11.5%	42	13.6%	1,985	13.2%
30-34	1,978	17.6%	519	15.2%	53	17.2%	2,550	17.0%
25-29	2,313	20.5%	687	20.1%	62	20.1%	3,062	20.4%
20-24	2,077	18.4%	781	22.8%	52	16.8%	2,910	19.4%
18-19	324	2.9%	154	4.5%	5	1.6%	483	3.2%
<18*	43	0.4%	4	0.1%	0	0.0%	47	0.3%
TOTAL	11,262		3,422		309		14,993	

RACE	TDOC	%	LOCAL	%	Unknown	%	SYSTEM-WIDE	%
Black	3,758	33.4%	2,411	70.5%	129	41.7%	6,298	42.0%
White	7,292	64.7%	933	27.3%	175	56.6%	8,400	56.0%
Other	212	1.9%	78	2.3%	5	1.6%	295	2.0%
TOTAL	11,262		3,422		309		14,993	

SEX	TDOC	%	LOCAL	%	Unknown	%	SYSTEM-WIDE	%
Male	9,565	84.9%	3,066	89.6%	268	86.7%	12,899	86.0%
Female	1,697	15.1%	356	10.4%	41	13.3%	2,094	14.0%
TOTAL	11,262		3,422		309		14,993	

Total admissions includes 309 unprocessed judgment orders.

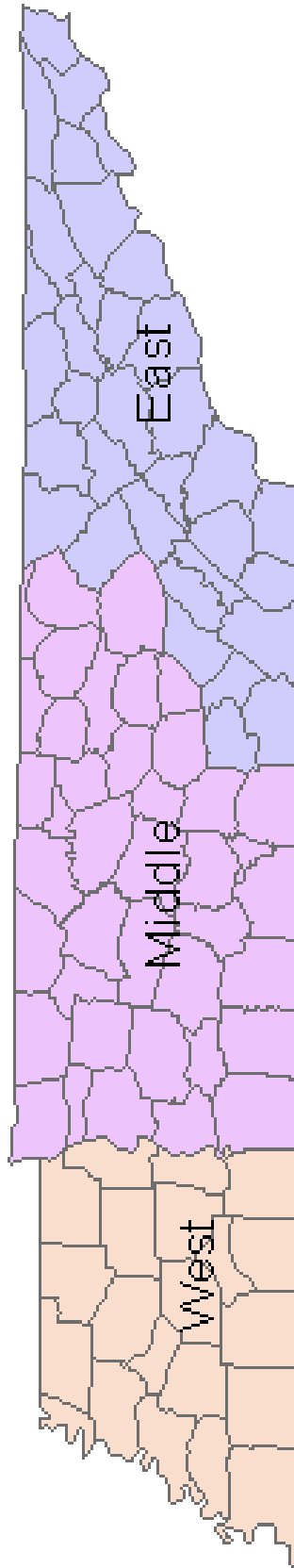
Felony Releases by Age, Race, and Sex: FY 2010 – 2011

AGE	TDOC	%	BACKUP	%	LOCAL	%	UNKNOWN	%	SYSTEM-WIDE	%
50+	737	12.8%	331	7.1%	382	9.2%	1	25.0%	1,451	10.0%
40-49	1,369	23.8%	871	18.6%	757	18.3%	0	0.0%	2,997	20.6%
35-39	864	15.0%	631	13.5%	516	12.5%	1	25.0%	2,012	13.8%
30-34	1,076	18.7%	885	18.9%	694	16.8%	0	0.0%	2,655	18.2%
25-29	1,047	18.2%	1,053	22.5%	890	21.5%	1	25.0%	2,991	20.5%
20-24	640	11.1%	867	18.5%	812	19.7%	1	25.0%	2,320	15.9%
18-19	15	0.3%	49	1.0%	81	2.0%	0	0.0%	145	1.0%
<18	2	0.0%	0	0.0%	0	0.0%	0	0.0%	2	0.0%
Unknown	0	0.0%	0	0.0%	0	0.0%	0	0.0%	0	0.0%
TOTAL	5,750		4,687		4,132		4		14,573	

RACE	TDOC	%	BACK-UP	%	LOCAL	%	UNKNOWN	%	SYSTEM-WIDE	%
Black	2,370	41.2%	1,303	27.8%	2,622	63.5%	1	25.0%	6,296	43.2%
White	3,248	56.5%	3,309	70.6%	1,421	34.4%	3	75.0%	7,981	54.8%
Other	132	2.3%	75	1.6%	89	2.2%	0	0.0%	296	2.0%
TOTAL	5,750		4,687		4,132		4		14,573	

Sex	TDOC	%	BACK-UP	%	LOCAL	%	UNKNOWN	%	SYSTEM-WIDE	%
Male	5,219	90.8%	3,708	79.1%	3,581	86.7%	3	75.0%	12,511	85.9%
Female	531	9.2%	979	20.9%	551	13.3%	1	25.0%	2,062	14.1%
TOTAL	5,750		4,687		4,132		4		14,573	

Admissions by Geographical Region: FY 2010–2011



	TDOC	LOCAL FELON	SYSTEM-WIDE
West	2,340	2,099	4,439
Middle	4,341	974	5,315
East	4,581	349	4,930

The system-wide totals in the above chart do not include 309 unprocessed judgment orders. Total admissions are 14,993.

Admissions by County of Conviction: FY 2010 - 2011

COUNTY	TDOC #	LOCAL #	SYSTEM-WIDE		COUNTY	TDOC #	LOCAL #	SYSTEM-WIDE	
			#	%				#	%
ANDERSON	92	1	93	0.6%	LAUDERDALE	71	1	72	0.5%
BEDFORD	183	0	183	1.2%	LAWRENCE	82	2	84	0.6%
BENTON	39	1	40	0.3%	LEWIS	20	1	21	0.1%
BLED SOE	13	0	13	0.1%	LINCOLN	70	0	70	0.5%
BLOUNT	176	6	182	1.2%	LOUDON	26	0	26	0.2%
BRADLEY	222	2	224	1.5%	McMINN	139	2	141	0.9%
CAMPBELL	105	3	108	0.7%	McNAIRY	41	0	41	0.3%
CANNON	29	1	30	0.2%	MACON	51	1	52	0.3%
CARROLL	75	2	77	0.5%	MADISON	358	7	365	2.4%
CARTER	99	1	100	0.7%	MARION	42	0	42	0.3%
CHEATHAM	48	1	49	0.3%	MARSHALL	79	0	79	0.5%
CHESTER	30	0	30	0.2%	MAURY	175	6	181	1.2%
CLAIBORNE	92	3	95	0.6%	MEIGS	13	0	13	0.1%
CLAY	19	1	20	0.1%	MONROE	121	2	123	0.8%
COCKE	80	3	83	0.6%	MONTGOMERY	129	3	132	0.9%
COFFEE	176	5	181	1.2%	MOORE	17	1	18	0.1%
CROCKETT	19	0	19	0.1%	MORGAN	4	0	4	0.0%
CUMBERLAND	89	1	90	0.6%	OBION	75	0	75	0.5%
DAVIDSON	1,186	888	2074	13.8%	OVERTON	60	0	60	0.4%
DECATUR	19	2	21	0.1%	PERRY	14	0	14	0.1%
DEKALB	49	0	49	0.3%	PICKETT	13	0	13	0.1%
DICKSON	112	4	116	0.8%	POLK	39	1	40	0.3%
DYER	178	2	180	1.2%	PUTNAM	147	6	153	1.0%
FAYETTE	24	1	25	0.2%	RHEA	24	2	26	0.2%
FENTRESS	56	1	57	0.4%	ROANE	25	0	25	0.2%
FRANKLIN	81	3	84	0.6%	ROBERTSON	88	2	90	0.6%
GIBSON	104	0	104	0.7%	RUTHERFORD	340	32	372	2.5%
GILES	50	1	51	0.3%	SCOTT	59	4	63	0.4%
GRAINGER	55	2	57	0.4%	SEQUATCHIE	32	2	34	0.2%
GREENE	116	102	218	1.5%	SEVIER	193	7	200	1.3%
GRUNDY	27	1	28	0.2%	SHELBY	799	2,071	2870	19.1%
HAMLEN	113	167	280	1.9%	SMITH	47	0	47	0.3%
HAMILTON	473	4	477	3.2%	STEWART	21	0	21	0.1%
HANCOCK	27	16	43	0.3%	SULLIVAN	552	3	555	3.7%
HARDEMAN	48	1	49	0.3%	SUMNER	283	3	286	1.9%
HARDIN	71	3	74	0.5%	TIPTON	78	6	84	0.6%
HAWKINS	190	2	192	1.3%	TROUSDALE	13	0	13	0.1%
HAYWOOD	44	1	45	0.3%	UNICOI	28	0	28	0.2%
HENDERSON	86	0	86	0.6%	UNION	63	0	63	0.4%
HENRY	108	1	109	0.7%	VAN BUREN	9	0	9	0.1%
HICKMAN	57	1	58	0.4%	WARREN	92	2	94	0.6%
HOUSTON	7	0	7	0.0%	WASHINGTON	235	2	237	1.6%
HUMPHREYS	23	0	23	0.2%	WAYNE	66	0	66	0.4%
JACKSON	17	1	18	0.1%	WEAKLEY	44	0	44	0.3%
JEFFERSON	111	7	118	0.8%	WHITE	27	3	30	0.2%
JOHNSON	29	0	29	0.2%	WILLIAMSON	166	2	168	1.1%
KNOX	966	4	970	6.5%	WILSON	150	2	152	1.0%
LAKE	29	0	29	0.2%	*UNKNOWN			309	2.1%
					TOTAL	11,262	3,422	14,993	100%

Felon Population by County of Conviction: FY 2010 - 2011

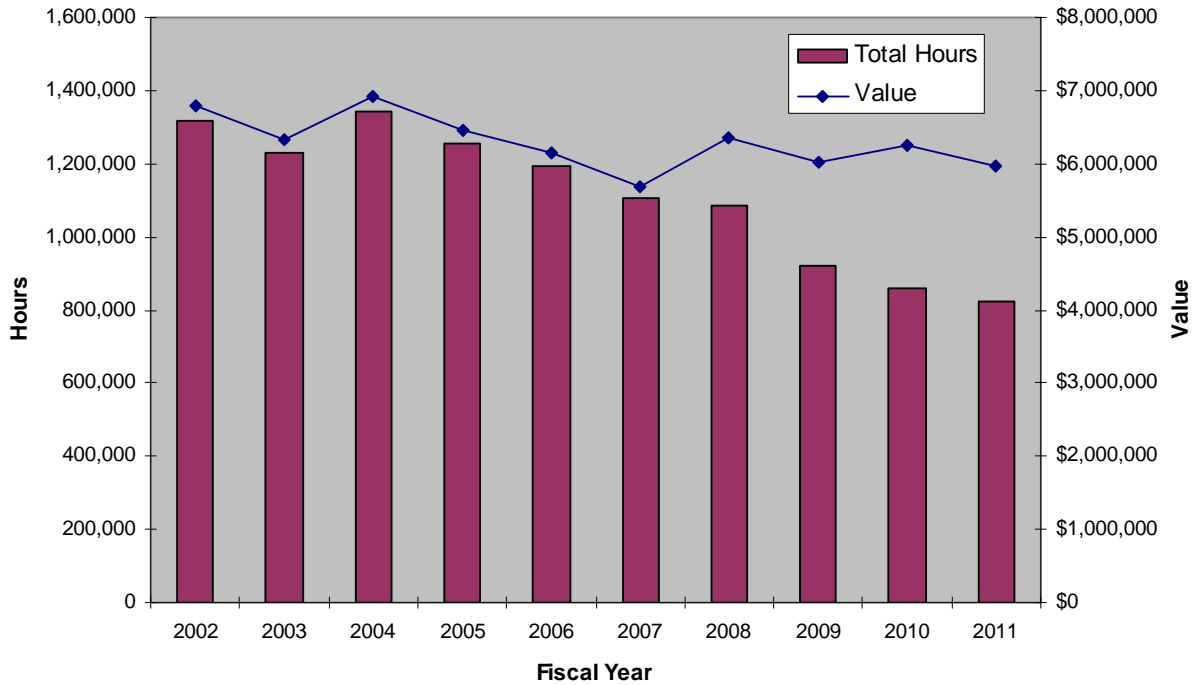
COUNTY	TDOC		BACKUP		LOCAL		SYSTEMWIDE		COUNTY	TDOC		BACKUP		LOCAL		SYSTEMWIDE	
	#	%	#	%	#	%	#	%		#	%	#	%	#	%	#	%
ANDERSON	123	0.6%	56	1.2%	1	0.0%	180	0.6%	LAUDERDALE	112	0.6%	31	0.6%	4	0.1%	147	0.5%
BEDFORD	256	1.3%	86	1.8%	2	0.1%	344	1.2%	LAWRENCE	103	0.5%	54	1.1%	2	0.1%	159	0.6%
BENTON	46	0.2%	4	0.1%	1	0.0%	51	0.2%	LEWIS	37	0.2%	10	0.2%	1	0.0%	48	0.2%
BLED SOE	24	0.1%	6	0.1%	0	0.0%	30	0.1%	LINCOLN	106	0.5%	44	0.9%	2	0.1%	152	0.5%
BLOUNT	255	1.3%	56	1.2%	2	0.1%	313	1.1%	LOUDON	44	0.2%	11	0.2%	11	0.3%	66	0.2%
BRADLEY	269	1.3%	131	2.7%	8	0.2%	408	1.4%	MCMINN	164	0.8%	118	2.4%	12	0.3%	294	1.0%
CAMPBELL	166	0.8%	89	1.8%	7	0.2%	262	0.9%	MCNAIRY	45	0.2%	19	0.4%	1	0.0%	65	0.2%
CANNON	34	0.2%	14	0.3%	0	0.0%	48	0.2%	MACON	30	0.1%	36	0.7%	1	0.0%	67	0.2%
CARROLL	102	0.5%	28	0.6%	1	0.0%	131	0.5%	MADISON	724	3.6%	27	0.6%	6	0.2%	757	2.6%
CARTER	78	0.4%	61	1.3%	18	0.5%	157	0.5%	MARION	83	0.4%	26	0.5%	5	0.1%	114	0.4%
CHEATHAM	90	28.0%	28	0.6%	4	0.1%	122	0.4%	MARSHALL	197	1.0%	39	0.8%	0	0.0%	236	0.8%
CHESTER	69	0.3%	10	0.2%	0	0.0%	79	0.3%	MAURY	354	1.7%	80	1.7%	2	0.1%	436	1.5%
CLAIBORNE	95	0.5%	63	1.3%	8	0.2%	166	0.6%	MEIGS	10	0.0%	9	0.2%	1	0.0%	20	0.1%
CLAY	14	0.1%	17	0.4%	1	0.0%	32	0.1%	MONROE	122	0.6%	66	1.4%	9	0.3%	197	0.7%
COCKE	134	0.7%	47	1.0%	5	0.1%	186	0.6%	MONTGOMERY	341	1.7%	62	1.3%	5	0.1%	408	1.4%
COFFEE	252	1.2%	53	1.1%	3	0.1%	308	1.1%	MOORE	29	0.1%	6	0.1%	1	0.0%	36	0.1%
CROCKETT	40	0.2%	12	0.2%	0	0.0%	52	0.2%	MORGAN	21	0.1%	1	0.0%	0	0.0%	22	0.1%
CUMBERLAND	108	0.5%	39	0.8%	1	0.0%	148	0.5%	OBION	90	0.4%	43	0.9%	2	0.1%	135	0.5%
DAVIDSON	3,603	17.7%	300	6.2%	875	24.4%	4,778	16.6%	OVERTON	42	0.2%	44	0.9%	3	0.1%	89	0.3%
DECATUR	34	0.2%	11	0.2%	3	0.1%	48	0.2%	FERRY	23	0.1%	5	0.1%	1	0.0%	29	0.1%
DEKALB	49	0.2%	32	0.7%	1	0.0%	82	0.3%	FICKETT	7	0.0%	8	0.2%	0	0.0%	15	0.1%
DICKSON	164	0.8%	32	0.7%	2	0.1%	198	0.7%	POLK	31	0.2%	30	0.6%	1	0.0%	62	0.2%
DYER	207	1.0%	69	1.4%	2	0.1%	278	1.0%	PUTNAM	166	0.8%	100	2.1%	3	0.1%	269	0.9%
FAYETTE	61	0.3%	13	0.3%	2	0.1%	76	0.3%	RHEA	56	0.3%	11	0.2%	3	0.1%	70	0.2%
FENTRESS	45	0.2%	43	0.9%	1	0.0%	89	0.3%	ROANE	68	0.3%	18	0.4%	5	0.1%	91	0.3%
FRANKLIN	111	0.5%	28	0.6%	13	0.4%	152	0.5%	ROBERTSON	187	0.9%	32	0.7%	9	0.3%	228	0.8%
GIBSON	151	0.7%	49	1.0%	1	0.0%	201	0.7%	RUTHERFORD	484	2.4%	172	3.6%	21	0.6%	677	2.4%
GILES	107	0.5%	18	0.4%	2	0.1%	127	0.4%	SCOTT	83	0.4%	43	0.9%	5	0.1%	131	0.5%
GRAINGER	59	0.3%	42	0.9%	1	0.0%	102	0.4%	SEQUATCHIE	40	0.2%	36	0.7%	4	0.1%	80	0.3%
GREENE	141	0.7%	72	1.5%	53	1.5%	266	0.9%	SEVIER	257	1.3%	111	2.3%	9	0.3%	377	1.3%
GRUNDY	49	0.2%	7	0.1%	5	0.1%	61	0.2%	SHELBY	3064	15.1%	378	7.8%	1,737	48.5%	5,179	18.0%
HAMBLEN	178	0.9%	36	0.7%	78	2.2%	292	1.0%	SMITH	45	0.2%	35	0.7%	0	0.0%	80	0.3%
HAMILTON	826	4.1%	96	2.0%	10	0.3%	932	3.2%	STEWART	31	0.2%	6	0.1%	4	0.1%	41	0.1%
HANCOCK	17	0.1%	19	0.4%	9	0.3%	45	0.2%	SULLIVAN	705	3.5%	316	6.5%	16	0.4%	1037	3.6%
HARDEMAN	95	0.5%	23	0.5%	2	0.1%	120	0.4%	SUMNER	431	2.1%	162	3.3%	29	0.8%	622	2.2%
HARDIN	61	0.3%	28	0.6%	3	0.1%	92	0.3%	TIPTON	163	0.8%	23	0.5%	7	0.2%	193	0.7%
HAWKINS	103	0.5%	112	2.3%	4	0.1%	219	0.8%	TROUSDALE	25	0.1%	9	0.2%	0	0.0%	34	0.1%
HAYWOOD	55	0.3%	30	0.6%	0	0.0%	85	0.3%	UNICOI	33	0.2%	20	0.4%	5	0.1%	58	0.2%
HENDERSON	119	0.6%	33	0.7%	4	0.1%	156	0.5%	UNION	70	0.3%	38	0.8%	0	0.0%	108	0.4%
HENRY	133	0.7%	42	0.9%	0	0.0%	175	0.6%	VAN BUREN	15	0.1%	6	0.1%	0	0.0%	21	0.1%
HICKMAN	76	0.4%	27	0.6%	1	0.0%	104	0.4%	WARREN	182	0.9%	36	0.7%	3	0.1%	221	0.8%
HOUSTON	15	0.1%	6	0.1%	2	0.1%	23	0.1%	WASHINGTON	221	1.1%	122	2.5%	34	0.9%	377	1.3%
HUMPHREYS	59	0.3%	11	0.2%	0	0.0%	70	0.2%	WAYNE	56	0.3%	26	0.5%	0	0.0%	82	0.3%
JACKSON	24	0.1%	12	0.2%	1	0.0%	37	0.1%	WEAKLEY	61	0.3%	29	0.6%	1	0.0%	91	0.3%
JEFFERSON	151	0.7%	72	1.5%	15	0.4%	238	0.8%	WHITE	54	0.3%	12	0.2%	5	0.1%	71	0.2%
JOHNSON	23	0.1%	12	0.2%	7	0.2%	42	0.1%	WILLIAMSON	236	1.2%	46	0.9%	1	0.0%	283	1.0%
KNOX	1,707	8.4%	125	2.6%	28	0.8%	1,860	6.5%	WILSON	270	1.3%	74	1.5%	1	0.0%	345	1.2%
LAKE	24	0.1%	14	0.3%	1	0.0%	39	0.1%	*UNKNOWN	14	0%	0	0%	422	12%	436	1.5%
TOTAL									20,334	127%	4844	100%	3,582	88%	28,760	100%	

OFFENDER ACCOUNTABILITY, PROGRAMS & SERVICES



HOURS AND VALUE OF COMMUNITY SERVICE WORK

Total Hours and Estimated Value of Community Service Work



Community Service Hours Worked by Facility: FY 2010 - 2011

	1st. Quarter	2nd Quarter	3rd Quarter	4th. Quarter	FACILITY TOTAL
CBCX	40873	33652	29872	27356	131753
HCCF	1925	2898	2061	1521	8405
MCCX	20650	26550	16462	23722	87384
MLCC	7424	4296	3210	5220	20150
NECX	35429	29540	34998	36284	136251
NWCX	16158	13868	14194	14401	58621
SCCF	5342	3516	5282	4441	18581
STRSRCF	9472	6328	7442	8634	31876
TPFW	33947	35673	48051	34124	151795
TCIX	40814	36572	41186	53013	171585
WTSP	3360	2170	0	0	5530
SYSTEM	215394	195063	202758	208716	821931
TOTAL SAVINGS: Dollar Value @ Minimum Wage					\$5,959,000

Note: Minimum wage = \$7.25/hr.

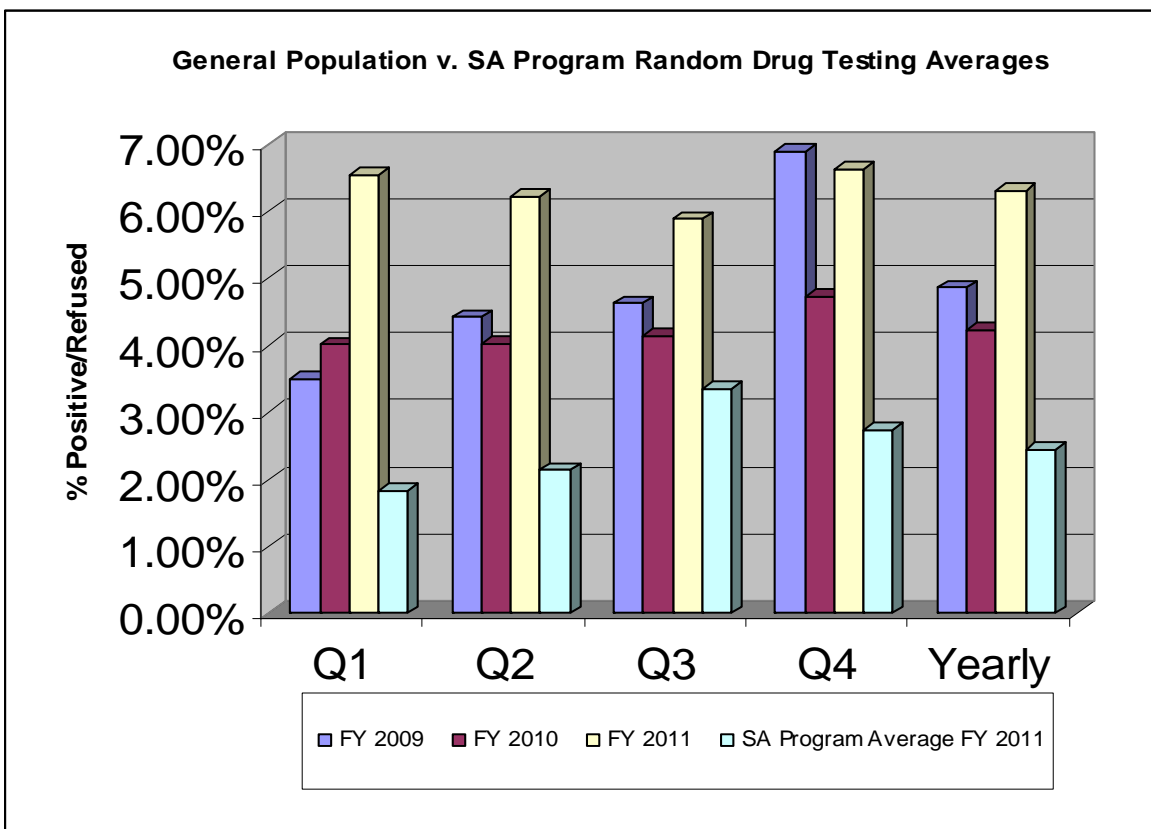
INMATE ASSIGNMENTS

INMATE ASSIGNMENTS		
June 30, 2011		
Assignment	Inmates	Percentage of Population
Academic Education	1,965	9.7%
Vocational Programs	1,387	6.8%
Support	5,627	27.6%
Program Services	1,201	5.9%
Recycling	183	0.9%
TRICOR	1,099	5.4%
Work Lines	252	1.2%
Other Agencies	153	0.8%
Community Service	448	2.2%
Work Release	58	0.3%
Cognitive Behavioral Programming	29	0.1%
Behavioral Programming	1,431	7.0%
Mental Health Programs	486	2.4%
Tech. Violators Diversion Program	58	0.3%
Transitional Center Programming	55	0.3%
Release Center	28	0.1%
Boot Camp	34	0.2%
Other	840	4.1%
Total Assigned	15,334	75.3%
Unassignable Status*	2,778	13.6%
Job Waiting List	2,241	11.0%
TOTAL INMATES	20,353	100.0%
% of Eligible Inmates Assigned		87.3%
*Inmates who can not be assigned due to their status, which may include those in segregation or classification, etc.		

DRUG SCREENS: FY 2010 – 2011

Random drug screens are conducted monthly on 2.5% of the inmate population. These screens are necessary to identify the use of contraband substances frequently found in prison. In addition, substance abuse (SA) program participants are randomly selected for regularly scheduled drug tests. All positive screens are confirmed through additional testing, and graduated sanctions are used for any positive drug screen.

Quarter	FY 2011			FY 2010 % Positive	FY 2009 % Positive	SA Program Average FY 2011
	Number Tested	# Positive/Refused	% Positive/Refused			
1st	1912	125	6.54%	4.01%	3.50%	2.45%
2nd	2086	130	6.23%	4.03%	4.42%	
3rd	2123	125	5.89%	4.15%	4.63%	
4th	1837	122	6.64%	4.74%	6.90%	
Yearly	7958	502	6.31%	4.23%	4.86%	



EDUCATION: FY 2010 – 2011

EDUCATIONAL ENROLLMENT: FY 2010-2011

INSTITUTION	ABE/GED		SEGREGATED Closed Circuit TV	VOLUNTEER LITERACY	COLLEGE*	VOCATIONAL		TOTAL
	Full-Time	Part-Time				Full-time	Part-Time	
CBCX	49	119		16	0	44	0	228
DSNF	0	142		0	5	20	0	167
HCCF	1939	0		0	0	720	0	2659
MCCX	844	0		150	25	487	0	1506
MLCC	171	0		0	0	155	0	326
NECX	258	93		12	1	282	141	787
NWCX	1007	0		32	31	752	0	1822
RMSI	178	25		54	16	99	0	372
SCCF	803	0		25	55	616	0	1499
STSRCF	173	18		79	4	214	0	488
TCIX	353	106		0	15	335	0	809
TPFW	279	0		0	55	137	0	471
WCFA	838	0		0	1	471	0	1310
WTSP	640	0	163	57	4	656	0	1520
YEARLY TOTALS	7532	503	163	425	212	4988	141	13964

TEST RESULTS: FY 2010-2011

INSTITUTION	GED			VOCATIONAL
	Tested	# Passing	% Passed	# Graduates
CBCX	37	26	70%	34
DSNF	17	12	71%	16
HCCF	84	66	79%	259
MLCC	15	13	87%	92
MCCX	119	88	74%	250
NECX	38	21	55%	181
NWCX	159	110	69%	358
RMSI	26	24	92%	96
SCCF	129	88	68%	206
STSRCF	79	40	51%	127
TCIX	83	56	67%	141
TPW	36	24	67%	64
WTSP	113	76	67%	194
WCFA	66	56	85%	264
SYSTEM-WIDE TOTAL	1001	700	70%	2282

GED & Vocational Certificates: FY 2002-2011

FY	2002	2003	2004	2005	2006	2007	2008	2009	2010	2011
G.E.D	511	326	606	598	464	685	786	737	710	700
Vocational	865	425	1434	1765	1473	1365	1342	1468	1585	2282

CLINICAL SERVICES DIVISION

The mission of the Division of Clinical Services is to provide quality healthcare in the most efficient, cost effective, and ethical manner possible while protecting the public health interest of the citizens of Tennessee. Upon intake into our prison system, all offenders receive extensive medical, mental health and dental screening and testing to identify their health status and treatment needs. Each of the Department’s facilities provides an on-site health clinic that offers a full range of healthcare services.

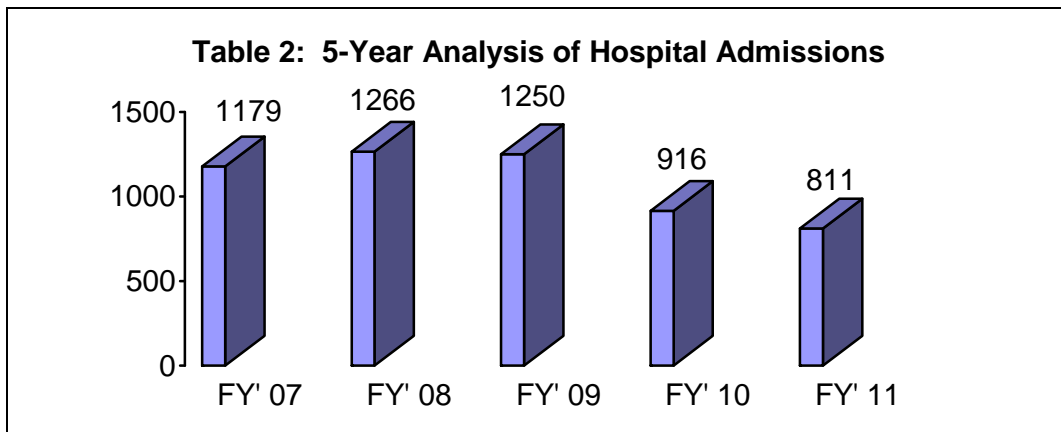
Health Services

The Department continues to identify areas of opportunity for chronic disease management among our inmate population (See Table 1).

**Table 1:
FY' 11 TDOC Chronic Disease Clinic Caseload**

Hepatitis C	2806
Seizures	357
Diabetes	1049
HTN	3232
Asthma	784
COPD	371
HIV	181
Cancer	76
TB/ INH	170
Cardiac	384

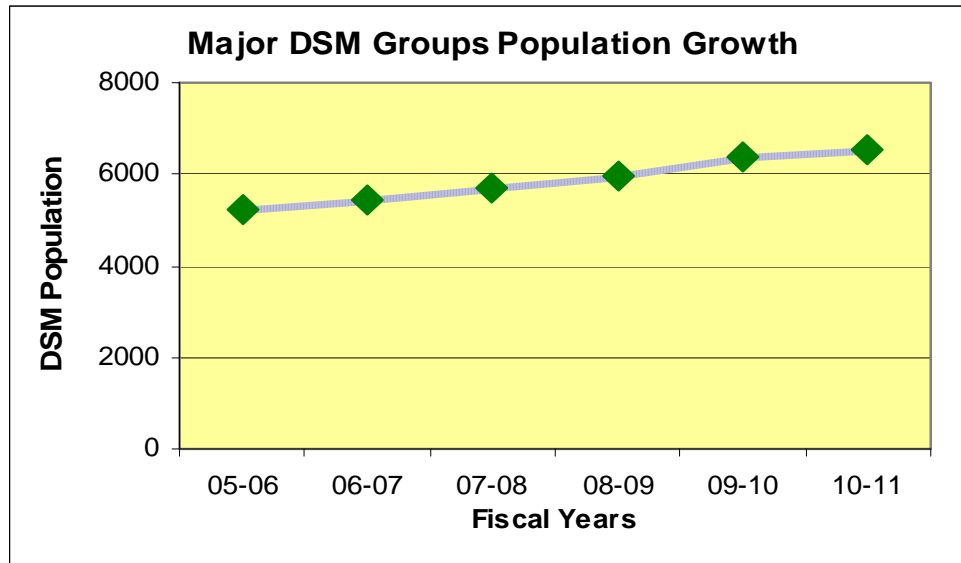
Due to extensive inpatient utilization management efforts the Department continues to achieve a significant decrease in hospital admissions (See Table 2). Accordingly, inpatient services accounted for approximately \$14.1m of the Department’s operating expenses, resulting in \$3.1 m savings compared to FY’ 10. The average length of stay was 4.21 days for this same period.



Pharmaceutical costs for FY’11 totaled \$10.9 m, representing a significant percentage of the Department’s total health care budget. The costs can be primarily attributed to the treatment of HIV, which accounted for approximately \$2.7m for the same period.

Mental Health Services

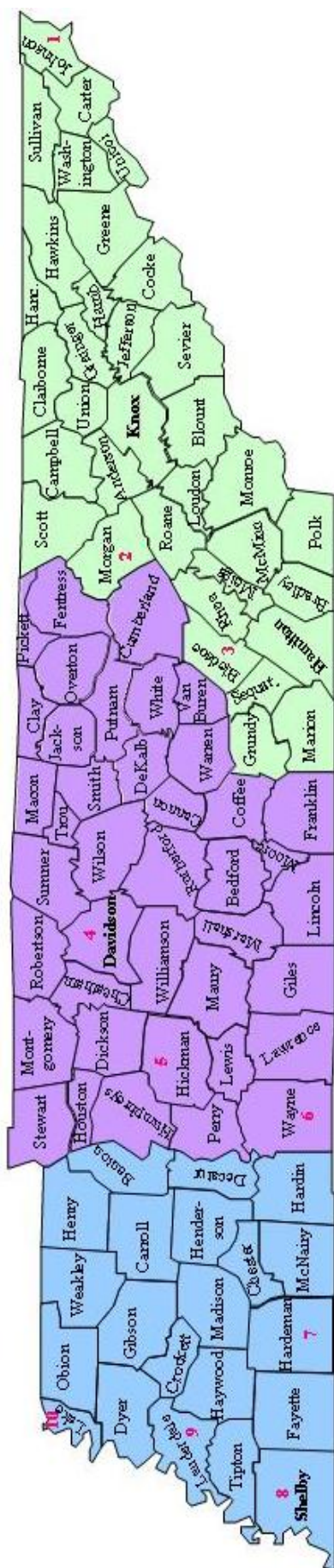
The Office of Mental Health Services sets policy standards for the delivery of mental health treatment and evaluates the care provided throughout the TDOC system. There are approximately 6,535 mentally ill inmates diagnosed within the TDOC system, an increase of 2.4% from the previous fiscal year.



INSTITUTIONAL DEMOGRAPHICS



TDOC Facilities and Security Designations: June 30, 2011



County	Facility	Security Level
1. Johnson	Northeast Correctional Complex	Maximum
2. Morgan	Morgan County Correctional Complex	Maximum
3. Bledsoe	Southeastern Tennessee State Regional Correctional Facility	Close
4. Davidson	Charles Bass Correctional Complex DeBerry Special Needs Facility Riverbend Maximum Security Institution Tennessee Prison for Women	Close Maximum Maximum Maximum
5. Hickman	Turney Center Industrial Complex	Close
6. Wayne	South Central Correctional Facility	Close
7. Hardeman	Hardeman County Correctional Facility Whiteville Correctional Facility	Medium Medium
8. Shelby	Mark Luttrell Correctional Center	Close
9. Lauderdale	West Tennessee State Penitentiary	Maximum
10. Lake	Northwest Correctional Complex	Close

Custody Level	Number of Offenders	Percent of Total
Maximum	1,019	5.0%
Close	651	3.2%
Medium	14,691	72.2%
Minimum	3,531	17.4%
Unclassified	442	2.2%
TOTAL	20,334	100.0%

Average Daily Population: FY 2010 - 2011

Institution	Average Daily Population
Charles Bass Correctional Complex	968
DeBerry Special Needs Facility	721
Hardeman County Correctional Facility	1,989
Mark Luttrell Correctional Center	419
Morgan County Correctional Complex	2,372
Northeast Correctional Complex	1,808
Northwest Correctional Complex	2,388
Riverbend Maximum Security Institution	705
South Central Correctional Facility	1,656
Southeastern TN State Regional Corr. Facility	920
Tennessee Prison for Women	769
Turney Center Industrial Complex	1,571
Whiteville Correctional Facility	1,523
West Tennessee State Penitentiary	2,469
System Total	20,278

Source: TDOC Bedspace and Operating Capacities Report

Demographics by Facility
June 30, 2011

	AGE								RACE			GENDER	
	<20	20-24	25-29	30-34	35-39	40-49	50+	Avg Age	Black	White	Other/ Unknown	Male	Female
CBCX	4	88	152	155	153	261	142	37.8	516	424	15	955	0
DSNF	2	31	54	71	71	126	260	46.0	259	345	11	615	0
HCCF	15	299	326	352	259	436	307	36.8	1176	779	39	1994	0
MCCX	33	310	430	423	321	522	363	36.7	860	1,494	48	2402	0
MLCC	2	43	75	85	70	103	42	36.0	177	237	6	0	420
NECX	7	178	257	286	251	489	312	38.6	510	1,223	47	1,780	0
NWCX	78	307	370	365	320	572	400	37.1	1182	1,149	81	2,412	0
RMSI	1	67	93	129	109	168	129	38.9	384	291	21	696	0
SCCF	13	215	342	299	240	343	214	35.9	671	912	83	1,666	0
STSR	1	71	125	154	147	259	196	39.8	321	616	16	953	0
TCIX	12	166	303	289	252	350	208	36.6	823	705	52	1,580	0
TPFW	5	80	148	147	117	193	94	36.5	197	570	17	0	784
WCFA	25	247	254	271	183	337	208	35.9	904	590	31	1,525	0
WTSP	51	433	452	477	344	506	289	34.9	1555	940	57	2,552	0
SYSTEM	249	2,535	3,381	3,503	2,837	4,665	3,164	37.7	9,535	10,275	524	19,130	1,204

Facility Populations by Primary Offense: June 30, 2011

Facility Population	CBCX	DSNF	HCCF	MCCX	MLCC	NECX	NWCX	RMSI	SCCF	STSRC	TCIX	TPW	WCFA	WTSP
	955	615	1,994	2,402	420	1,780	2,412	696	1,666	953	1,580	784	1,525	2,552
OFFENSE														
PERSON OFFENSES	30%	60%	54%	45%	40%	51%	49%	63%	43%	64%	41%	39%	43%	42%
Homicide	7%	26%	17%	19%	23%	24%	17%	42%	13%	30%	18%	19%	12%	19%
Kidnapping	1%	1%	1%	1%	0%	1%	1%	1%	2%	1%	1%	1%	1%	1%
Sex Offenses	11%	22%	23%	12%	1%	14%	18%	9%	16%	24%	10%	4%	15%	9%
Assault	10%	11%	13%	12%	15%	12%	13%	10%	13%	9%	11%	15%	14%	13%
PROPERTY OFFENSES	33%	23%	27%	30%	29%	29%	32%	25%	31%	22%	30%	30%	33%	35%
Arson	0%	1%	1%	1%	0%	1%	1%	0%	1%	0%	0%	1%	0%	0%
Burglary	11%	6%	6%	11%	5%	10%	9%	4%	10%	4%	9%	6%	9%	9%
Forgery/Fraud	2%	1%	1%	1%	7%	1%	1%	1%	1%	1%	1%	7%	1%	2%
Larceny/Theft	5%	2%	2%	5%	5%	4%	4%	2%	4%	2%	3%	7%	3%	4%
Robbery	16%	12%	18%	12%	11%	13%	18%	18%	16%	15%	17%	9%	19%	20%
SOCIETAL OFFENSES	29%	14%	14%	20%	21%	16%	14%	10%	20%	9%	25%	23%	19%	18%
	28%	13%	14%	18%	19%	14%	13%	10%	19%	8%	23%	20%	17%	17%
Vehicular Homicide/DUI	1%	1%	1%	1%	2%	2%	1%	0%	2%	2%	1%	2%	1%	1%
ALL OTHER OFFENSES	7%	3%	4%	6%	10%	5%	5%	2%	6%	4%	5%	9%	5%	4%
C/S/F Person*	1%	1%	1%	1%	5%	1%	1%	1%	1%	2%	1%	3%	1%	1%
C/S/F Property*	1%	0%	0%	1%	2%	0%	0%	0%	1%	0%	0%	1%	1%	0%
C/S/F Societal*	1%	0%	0%	0%	0%	0%	1%	0%	1%	0%	1%	1%	0%	0%
Escape	0%	0%	0%	0%	0%	0%	0%	0%	0%	0%	0%	0%	0%	0%
All Other**	4%	2%	3%	3%	3%	3%	3%	1%	3%	2%	2%	3%	3%	2%
TOTAL	100%	100%	100%	100%	100%	100%	100%	100%	100%	100%	100%	100%	100%	100%

**Includes 14 unprocessed judgement orders. * C/S/F = Refers to non-substantive offenses such as conspiracy, solicitation, facilitation, aiding and abetting, etc.

Incidents: FY 2010 – 2011

	1st Qtr	2nd Qtr	3rd Qtr	4th Qtr	Total
Rape	0	0	0	1	1
Weapon Offenses	232	188	236	254	910
Drug Offenses	305	252	239	324	1120
STG Offenses	198	159	158	194	709
Riot	0	0	0	0	0
Sexual Misconduct	222	228	235	218	903
Assault					
Assault on Offender	130	109	136	137	512
Assault on Staff	181	182	151	202	716
Death					
Homicide	0	0	0	0	0
Suicide	2	0	0	0	2
Accidental Death	0	0	0	0	0
Natural Death	19	18	12	17	66
Lethal Injection	0	1	0	0	1
Escape					
Secure Supervision	0	0	0	0	0
Minimum Security	1	2	1	1	5
Minimum Security - Work Crew - Supervised	2	0	1	0	3
Minimum Security - Work Crew - Unsupervised	0	0	0	1	1
Furlough/Pass	1	0	0	1	2
Non-Violent Incident Rate (per 100 inmates)	19.12	17.78	16.64	18.83	72.37
Violent Incident Rate (per 100 inmates)	2.14	2.12	2.15	2.41	8.82
Total Incident Rate (per 100 inmates)	21.26	19.90	18.79	21.24	81.19

TDOC INCIDENT SUMMARY: FY 2010 - 2011

Inc Type	Incident Description	Average Population	CBCX	HCCF	MCCX	MARC	NECX	NWCX	RMSI	SCCF	SPND	STSR	TCIX	TPFW	WCFA	WTSP	SYSTEM
			Charles Bass Correctional Complex	Hardeman County Correctional Facility	Morgan County Correctional Complex	Mark H. Luttrell Center	Northeast Correctional Complex	Northwest Correctional Complex	Riverbend Maximum Security Institution	South Central Correctional Facility	DeBerry Special Needs Facility	Southeastern TN State	Taney Center Industrial Complex	TN Prison for Women	Whiteville Correctional Facility	West TN State Penitentiary	
			951	1965	2342	417	1783	2353	696	1629	712	913	1549	761	1491	2416	19978
Arrest	ABT FURL/PASS-VIOLENT CRIME																0
Arrest	ABS FURL/PASS-FELONY																0
Arrest	ABM FURL/PASS-MISDEMEANOR																0
Arrest	AFO FELONY-OFN		0	0	0	0	0	0	0	0	0	0	0	0	1	0	1
Arrest	AFS FELONY-STAFF		0	3	2	0	1	0	1	3	2	2	2	0	5	7	26
Arrest	AFV FELONY-VISITOR		0	13	5	0	6	3	0	1	0	2	8	0	9	8	55
Arson *	ARI SER-INT-PROP DMG->\$500-OPER DISRUP		0	0	0	0	0	0	0	0	0	0	0	0	0	0	0
Arson *	ARD INJURY-PROP DMG/>\$500-OPR DISRUP		0	0	0	2	0	1	1	0	0	0	0	0	0	0	4
Arson *	ARP PROP DMG->\$500		0	1	1	0	0	0	0	0	0	0	0	0	0	0	2
Assault *	ASA STAFF-SERIOUS INIURY		2	0	1	0	0	6	2	2	2	0	5	0	0	2	22
Assault *	ASB STAFF-INIURY		2	5	9	7	1	9	10	3	19	2	2	3	8	3	83
Assault *	ASC STAFF-MINOR INIURY		2	12	22	6	19	22	8	14	27	3	19	7	2	57	220
Assault *	ASI STAFF-NO INIURY		10	10	37	1	18	70	65	6	59	6	32	9	23	45	391
Assault *	ASD OFN-SERIOUS INIURY		0	8	12	2	3	5	0	2	2	0	4	1	2	3	44
Assault *	ASE OFN-INIURY		3	19	15	7	3	19	3	11	1	4	13	1	38	9	146
Assault *	ASF OFN-MINOR INIURY		6	13	11	10	11	33	4	12	12	5	6	2	13	21	159
Assault *	ASK OFN-NO INIURY		3	7	12	11	5	23	10	4	29	3	2	13	34	7	163
Assault *	ASG VIS-SERIOUS INIURY		0	1	0	0	0	0	0	0	0	0	0	0	0	0	1
Assault *	ASH VIS-INIURY		0	0	0	0	0	0	0	0	0	0	0	0	0	0	0
Assault *	ASI VIS-MINOR INIURY		0	0	1	0	0	0	0	1	0	1	0	0	0	0	3
Assault *	ASM VIS-NO INIURY		0	0	0	0	0	0	0	0	0	0	0	0	1	0	1
Death	DEA OFN-NATURAL		0	4	4	0	6	5	2	0	40	0	1	2	1	1	66
Death *	DEC DEATH-OFN-EXEC-ELEC CHR		0	0	0	0	0	0	0	0	0	0	0	0	0	0	0
Death	DEH OFN-HOMICIDE		0	0	0	0	0	0	0	0	0	0	0	0	0	0	0
Death	DEI OFN-EXEC-LETH INJ		0	0	0	0	0	0	0	0	0	0	0	0	0	0	0
Death *	DES OFN-SUICIDE		0	0	1	0	0	0	0	1	0	0	0	0	0	0	2
Death	DOA OFN-ACCIDENT		0	0	0	0	0	0	0	0	0	0	0	0	0	0	0
Death *	DEG STAFF-HOMICIDE (ON DUTY)		0	0	0	0	0	0	0	0	0	0	0	0	0	0	0
Death *	DEF STAFF-SUICIDE (ON DUTY)		0	0	0	0	0	0	0	0	0	0	0	0	0	0	0
Death	DED STAFF-ACCIDENT (ON DUTY)		0	0	0	0	0	0	0	0	0	0	0	0	0	0	0
Death	DET STAFF (ON DUTY)-NATURAL		0	0	0	0	0	0	0	0	0	0	0	0	0	0	0
Death	DEV VISITOR		0	0	0	0	0	0	0	0	0	0	0	0	0	0	0
Death *	DVH VISITOR-HOMICIDE		0	0	0	0	0	0	0	0	0	0	0	0	0	0	0
Death *	DVS VISITOR-SUICIDE		0	0	0	0	0	0	0	0	0	0	0	0	0	0	0
Death	DVA VISITOR-ACCIDENT		0	0	0	0	0	0	0	0	0	0	0	0	0	0	0
Death	DVN VISITOR-NATURAL		0	0	0	0	0	0	0	0	0	0	0	0	0	0	0
Disturbance	DIL TEMP. CONTROL LOSS		1	0	0	0	0	0	0	0	0	0	2	0	1	0	4
Disturbance	DIR THREAT CONTROL LOSS		1	0	2	1	0	1	3	0	0	1	6	1	3	1	20
Disturbance	DIS MINOR		40	384	283	30	152	341	71	296	73	53	250	91	198	265	2527

TDOC INCIDENT SUMMARY: FY 2010 - 2011

Inc Type	Incident Description	CBX	HCCF	MCCX	MRC	NECX	NWCX	RMSI	SCCF	SPND	STSR	TCIX	TPFW	WCFA	WSP	SYSTEM
		Charles Bass Correctional Complex	Hardeman County Correctional Facility	Morgan County Correctional Complex	Mark H. Luttrell Center	Northeast Correctional Complex	Northwest Correctional Complex	Riverview Maximum Security Institution	South Central Correctional Facility	DeBerry Special Needs Facility	Southeastern TN State Facility	Turkey Industrial Complex	TN Prison for Women	Whiteville Correctional Facility	West TN State Penitentiary	
	Average Population	951	1965	2342	417	1783	2353	696	1629	712	913	1549	761	1491	2416	19978
Drugs	DRJ CONFIS-SIGNIF AMT-OFN	8	15	29	7	26	19	9	0	9	3	12	1	6	17	161
Drugs	DRK CONFIS-SIGNIF AMT-STAFF	0	0	0	0	0	0	0	0	0	0	0	0	0	0	0
Drugs	DRL CONFIS-SIGNIF AMT-VISITOR	0	0	0	0	0	1	0	0	0	0	0	1	1	0	3
Drugs	DRQ CONFISCATION-OFFENDER	10	135	91	15	84	107	10	21	22	25	84	30	44	73	751
Drugs	DRN CONFISCATION-STAFF	0	0	0	0	0	0	0	0	0	0	0	0	0	0	0
Drugs	DRO CONFISCATION-VISITOR	0	0	1	0	0	0	0	0	0	0	0	0	2	0	3
Drugs	DRP POSSESSION	0	19	39	0	49	17	0	9	8	1	11	1	5	11	170
Drugs	DRS SELLING	0	6	1	5	0	5	0	3	0	0	2	3	4	3	32
Equip Prob	EPA MAJOR DISRUPTION	1	0	4	4	0	1	0	0	2	2	2	2	0	1	19
Equip Prob	EPB MINOR DISRUPTION	0	0	0	0	0	0	0	0	0	0	0	0	0	0	0
Escape	* ESA SECURE SUPERVISION	0	0	0	0	0	0	0	0	0	0	0	0	0	0	0
Escape	* ESB MIN SECURITY-VIOLENCE	0	0	0	0	0	0	0	0	0	0	0	0	0	0	0
Escape	ESC MIN SECURITY UNIT	1	0	3	0	0	0	0	0	0	0	1	0	0	0	5
Escape	ESP MIN SEC WORK CREW-SUPV	0	0	0	0	1	0	1	0	0	1	0	0	0	0	3
Escape	ESU MIN SEC WORK CREW UNSUPV	1	0	0	0	0	0	0	0	0	0	0	0	0	0	1
Escape	ESE FURLOUGH/PASS	1	0	1	0	0	0	0	0	0	0	0	0	0	0	2
Escape	ESF ATT. SECURE SUPV	0	0	1	0	0	0	1	0	0	0	0	1	0	0	3
Escape	* ESH ATT. MIN SECURITY-VIOLENCE	0	0	0	0	0	0	0	0	0	0	0	0	0	0	0
Escape	ESI ATT. MIN SECURITY	1	0	0	0	0	0	0	0	0	0	0	0	0	0	1
Escape	ESR RETURN FROM ESCAPE PRIOR TO TOMIS	0	0	0	0	0	0	0	0	0	0	0	0	0	0	0
Fire	FII SER-INJ-PROP DMG->\$500-OPR DISRUP	0	0	0	0	0	0	0	0	0	0	0	0	0	0	0
Fire	FIP INJ-PROP DMG->\$500-OPR DISRUP	0	0	0	0	0	0	0	0	0	0	0	0	0	0	0
Fire	FIS PROP DMG->\$500-OPR DISRUP	0	0	0	0	0	1	0	0	0	0	1	0	0	1	3
Injury	IHA ACCIDENT-OFN-SERIOUS	9	1	3	2	8	2	1	1	1	3	2	0	3	0	36
Injury	IHC ACCIDENT-OFN	48	0	53	49	0	0	5	2	9	108	45	4	1	6	330
Injury	IHB ACCIDENT-OFN WRK RELATED	0	0	0	0	0	0	0	0	0	0	0	0	0	0	0
Injury	IJA ACCIDENT-STAFF-SERIOUS	1	0	3	1	1	2	0	0	3	2	0	0	1	3	17
Injury	IJB ACCIDENT-STAFF	27	0	47	24	47	33	19	33	50	35	24	14	17	30	400
Injury	ILA ACCIDENT-VISITOR-SERIOUS	0	0	0	0	0	0	0	0	0	0	0	0	0	0	0
Injury	ILB ACCIDENT-VISITOR	2	0	9	1	3	3	2	1	0	0	0	8	1	2	32
Injury	* INB SELF INFLICTED-SERIOUS	1	0	0	1	0	4	1	0	26	0	0	0	0	0	33
Injury	* INC SELF INFLICTED	2	41	45	11	0	20	25	23	139	4	18	33	51	25	437
Illness	IOT OFN-SERIOUS-HOSP	12	3	48	18	15	41	7	8	4	16	16	36	71	120	415
Illness	ISH STAFF-SERIOUS-HOSP(ON DUTY)	2	0	2	4	3	9	2	5	14	2	2	7	2	20	74
Illness	IWS VISITOR-SERIOUS-HOSP	1	0	0	0	0	0	0	0	0	0	0	0	0	0	1
Illness	IWM VISITOR	0	0	0	0	0	0	0	0	0	0	0	0	0	0	0
Other	BTH BOMB THREAT	0	0	0	0	0	0	0	0	0	0	0	0	0	0	0
Other	CON CONTRABAND	176	195	214	42	131	240	137	358	132	112	377	96	178	144	2532
Other	PCT POSSEUSE CELLULAR TEL.	119	143	352	0	195	417	55	60	11	57	193	1	38	327	1968

WWW.TN.GOV/CORRECTION

TENNESSEE DEPARTMENT OF CORRECTION
RACHEL JACKSON BUILDING
320 SIXTH AVENUE NORTH
NASHVILLE, TN 37243
615-741-1000

