



Department of
Correction

STATISTICAL ABSTRACT

FY 2019



TONY PARKER, COMMISSIONER

**The Tennessee Department of Correction
Fiscal Year 2019 Statistical Abstract**

Compiled and Published

by

Decision Support: Research & Planning

**Dr. Mary Karpos, Director
Linda Booker, Statistical Analyst
Durice Wallace, Program Support
Renee Watkins, Program Support**

October 2019

**To request a copy of this report, or other research information,
contact us at**

Telephone: 615-253-8122

Email: planning.research@tn.gov

Visit the TDOC website: www.tn.gov/correction

Pursuant to the State of Tennessee's policy on nondiscrimination, the Department of Correction does not discriminate on the basis of race, gender, religion, color, national or ethnic origin, age, pregnancy, creed, disability, or veteran's status in its policies, or in the admission of or access to, or treatment or employment in, its programs, services, or activities.

Equal Employment Opportunity/Affirmative Action inquiries or complaints should be directed to the Department of Correction, EEO/AA Coordinator, Human Resources Office, 3rd Floor Rachel Jackson Building, 320 Sixth Avenue North, Nashville, TN 37243-0465, Telephone 615-253-8026.

ADA inquiries or complaints should be directed to the Department of Correction, Human Resources Office, 3rd Floor Rachel Jackson Building, 320 Sixth Avenue North, Nashville, TN 37243-0465, Telephone 615-253-8026.

Please note that data extractions are provided by Strategic Technology Solution (STS), a division within the Tennessee Department of Finance and Administration.

Table of Contents

Footprint

As of June 30, 2019 3

Prison Facilities and Security Designations

As of June 30, 2019 4

Community Supervision Districts, District Offices, and Counties Served

As of June 30, 2019 4

TDOC Budget Compared to State of Tennessee Total Budget

Fiscal Year 2019..... 5

Personnel by Race and Sex

As of June 30, 2019 6

Personnel by Division

As of June 30, 2019 6

Personnel by Class

Fiscal Years 2008/09 – 2018/19 6

TDOC Full Time Prison Positions by Designation Type

Fiscal Years 2009 – 2019 7

Security & Non-Security Full-Time Positions by Prisons

Fiscal Year 2018/19 7

Correctional Officer Series Vacancies

Fiscal Years 2009 – 2019 8

Correctional Officer Series Vacancies by Classification

As of June 30, 2019 8

TDOC Prison Turnover Rates

Fiscal Year 2019..... 8

Correctional Officer Salary Comparison

Fiscal Years 2009 – 2019 9

Community Supervision: Security & Non-Security Full-Time Positions by Districts & Other Units

As of June 30, 2019 10

Probation/Parole Officer Series Vacancy Rates

As of June 30, 2019 11

Probation/Parole Officer Turnover Rates
 Fiscal Years 2014 – 2019 11

TDOC Incarcerated Populations by Primary Offense
 As of June 30, 2019 12

Projected Incarcerated Population vs. Actual
 July 2016 to Present 13

Incarcerated Felon Population Projections vs. Actual
 Fiscal Years 2016/17 – 2018/19 14

Incarcerated Felon Populations
 Fiscal Years 2012/13 – 2018/2019 15

Incarcerated Felon Populations
 Fiscal Years 2001/02 – 2017/18 16

Local Jail Populations
 Fiscal Years 2017/18 – 2018/19 17

Felon Admissions in Tennessee
 Fiscal Year 2018/19 18

Felon Admissions in Tennessee
 Fiscal Year 2017/18 19

Felon Admissions in Tennessee
 Fiscal Years 2003/04 – 2017/18 20

Felon Inmate Releases in Tennessee
 Fiscal Year 2018/19 21

Felon Inmate Releases in Tennessee
 Fiscal Year 2017/18 22

Felon Inmate Releases in Tennessee
 Fiscal Years 2004/05 – 2017/18 23

Probation and Community Correction Populations
 Fiscal Years 2012/13 – 2018/2019 24

Probation and Community Correction Populations and Averages
 Fiscal Years 2003/04 – 2017/2018 25

Parole Grant Rates in Tennessee
 Fiscal Years 2009/10 – 2018/19 26

Parole Populations	
Fiscal Years 2012/13 – 2018/19	27
Parole Admissions / Releases	
Fiscal Years 2012/13 – 2018/19	28
Probation Admissions / Releases	
Fiscal Years 2015/16 – 2018/19	29
Community Correction Admissions / Releases	
Fiscal Years 2015/16 – 2018/19	30
Incarcerated Female Felon Populations	
As of June 30, 2019	31
System wide Incarcerated Female Felon Population Totals	
Fiscal Years 1992/93 – 2018/19	32
Female Felon Admissions in Tennessee	
Fiscal Year 2018/19	33
Female Felon Admissions in Tennessee	
Fiscal Years 2012/13 – 2017/18	34
Female Inmate Felon Releases in Tennessee	
Fiscal Year 2018/19	35
Female Inmate Felon Releases in Tennessee	
Fiscal Year 2017/18	36
Incarcerated Female Populations, Admissions and Releases	
Fiscal Year Averages and Totals 2009/10 – 2017/18	37
Female Parole Grant Rates	
Fiscal Years 2012/13 – 2017/18	38
TDOC Bed Space and Operating Capacities	
As of June 30, 2019	39
Population Averages by Month	
June 30, 2019	40
Population Averages	
Fiscal Years 2004/05 – 2018/19	41
Felon Population by County of Conviction	
As of June 30, 2019	42

Average Sentence Length by Primary Offense and Location
 Fiscal Year 2018/19 43

TN State Wide Recidivism Rate by Year of Release
 As of June 30, 2019 44

TN Recidivism Rate by Location and Year of Release
 As of June 30, 2019 44

Fact Sheet and Graphics: Juveniles
 On June 8, 2019 45 – 48

Death Row Facts
 June 30, 2019 49

TDOC Selected Incidents Summary – Fiscal Year 2018/19
 As of June 30, 2019 50 – 56

Incident Report User’s Guide
 June 30, 2019 57

Jobs, Education and Rehabilitative Programs
 Fiscal Year 2018/19 58

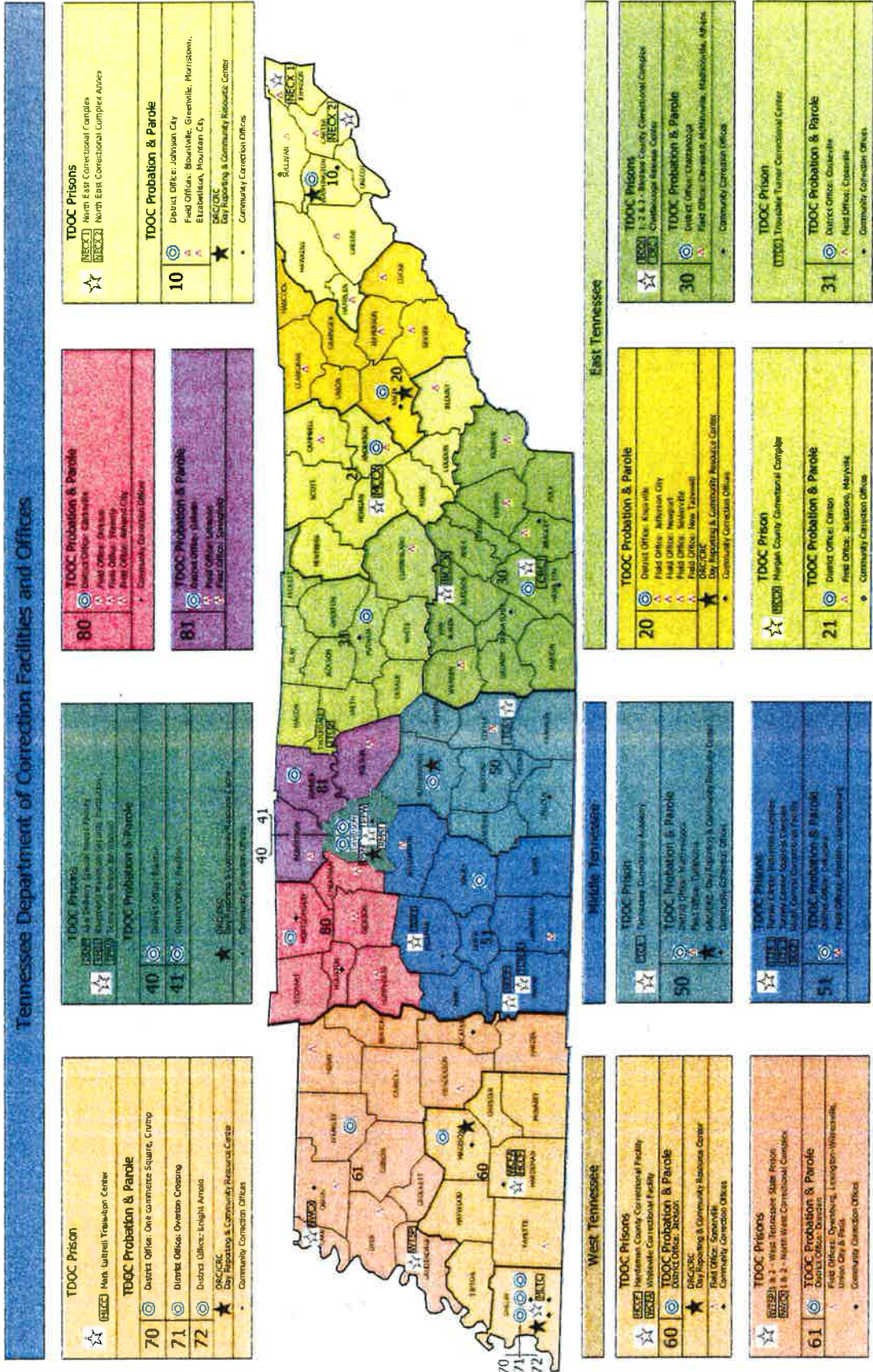
HiSET Test Results by Prison
 Fiscal Year 2018/19 58

Felon Inmate Program Assignments
 As of June 30, 2019 59

Total Hours and Value of Community Service Work
 Fiscal Year 2018/19 60

Number of Inmate Patients in Individual Chronic Care Clinics
 As of June 30, 2019 61

FOOTPRINT



Prison Facilities and Security Designations

Institution	Region	County	City	Security Designation
Bledsoe County Correctional Complex (BCCX)	East	Bledsoe	Pikeville	Minimum - Close
DeBerry Special Needs Facility (DSNF)	Middle	Davidson	Nashville	Minimum - Maximum
Hardeman County Correctional Facility (HCCF)*	West	Hardeman	Whiteville	Minimum - Medium
Mark Luttrell Transition Center (MLTC)	West	Shelby	Memphis	Minimum - Medium
Morgan County Correctional Complex (MCCX)	East	Morgan	Wartburg	Minimum - Maximum
Northeast Correctional Complex (NECX)	East	Johnson	Mountain City	Minimum - Maximum
Northwest Correctional Complex (NWCX)	West	Lake	Tiptonville	Minimum - Close
Riverbend Maximum Security Institution (RMSI)	Middle	Davidson	Nashville	Minimum - Maximum
South Central Correctional Facility (SCCF)*	Middle	Wayne	Clifton	Minimum - Close
Tennessee Prison for Women (TPFW)	Middle	Davidson	Nashville	Minimum - Maximum
Trousdale Turner Correctional Complex (TTCC)*	East	Trousdale	Hartsville	Minimum - Medium
Turney Center Industrial Complex (TCIX)	Middle	Hickman	Only	Minimum - Close
West Tennessee State Penitentiary (WTSP)**	West	Lauderdale	Henning	Minimum - Maximum
Whiteville Correctional Facility (WCFA)*	West	Hardeman	Whiteville	Minimum - Medium

*Operated by CoreCivic.

**Women's Therapeutic Residential Center (WTRC) —

• West Region, Lauderdale County, Henning, Minimum to Medium

Community Supervision Districts, District Offices, and Counties Served

District	District Office	Counties Served
10	Johnson City	Carter, Greene, Hamblen, Hawkins, Johnson, Sullivan, Washington, Unicoi
20	Knoxville	Cialborne, Cocke, Grainger, Hancock, Jefferson, Knox, Sevier, Union
21	Clinton	Anderson, Blount, Campbell, Fentress, Loudon, Morgan, Roane, Scott
30	Chattanooga	Bledsoe, Bradley, Grundy, Hamilton, Marion, McMinn, Meigs, Monroe, Polk, Rhea, Sequatchie, Van Buren, Warren
31	Cookeville	Clay, Cumberland, Dekalb, Jackson, Macon, Overton, Pickett, Putnam, Smith, Trousdale, White
40	Nashville	Davidson
41	Nashville	Davidson
50	Murfreesboro	Bedford, Cannon, Coffee, Franklin, Lincoln, Marshall, Moore, Rutherford
51	Columbia	Giles, Hickman, Lawrence, Lewis, Maury, Perry, Wayne, Williamson
60	Jackson	Chester, Fayette, Hardeman, Haywood, Madison, McNairy, Tipton
61	Dresden	Benton, Carroll, Crockett, Decatur, Dyer, Gibson, Hardin, Henderson, Henry, Lake, Lauderdale, Obion, Weakley
70	Memphis	Shelby
71	Memphis	Shelby
72	Memphis	Shelby
80	Clarksville	Cheatham, Dickson, Houston, Humphreys, Montgomery, Stewart
81	Gallatin	Robertson, Sumner, Wilson

BUDGET

TDOC Budget Compared to State of Tennessee Total Budget: FY 2019

Correction
\$1.0 billion
(3%)



Payroll	\$382,989,400
Travel	716,500
Printing	98,500
Utilities & Fuel	19,907,700
Communication	534,300
Maintenance Expenses	9,439,800
Supplies	28,538,900
Rentals & Risk Management	915,400
Motor Vehicle Operations	751,500
Inmate Pay & Awards	5,321,700
Payments to Local Governments	155,899,700
Stores for Resale	8,620,700
Equipment	96,400
Training	159,700
Prof. Services by State Agencies	33,625,200
Correctional Release Centers	1,918,800
Professional Services	148,957,800
Privately Operated Facilities	176,115,200
Sentencing Act Account	25,509,600
Community Supervision	36,120,300
FY19 Total	\$1,036,237,100

HUMAN RESOURCES

The Tennessee Department of Correction (TDOC) Central Office Human Resources provides technical assistance and advice and ensures compliance with Civil Service Rules, EEOC/Affirmative Action, state law, and policies. Human Resources also implements and monitors personnel related programs such as employee relations, recruitment and retention, training, performance evaluations, employee transactions, and employee benefits, including accommodations under the Americans with Disabilities Act.

Personnel* by Race and Sex: June 30, 2019

	Male	Female	Total
White	2,398	1,471	3,869
Black	516	892	1,408
American Indian	10	8	18
Asian	9	11	20
Hispanic	37	39	76
Other	23	33	56
Total	2,993	2,454	5,447

*Personnel refers to full-time employees.

Personnel by Division: June 30, 2019

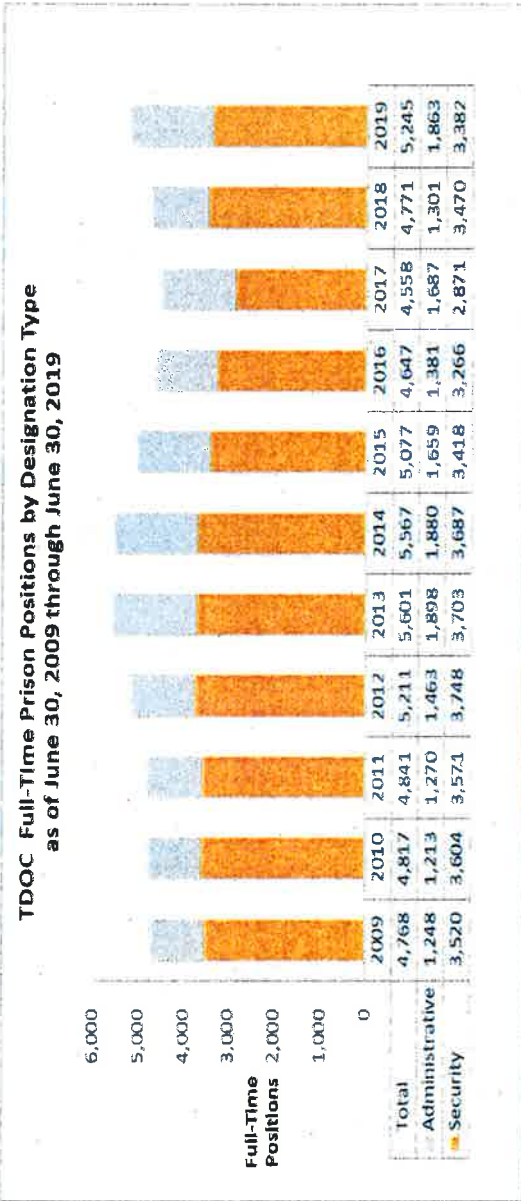
Division	Full-Time Personnel	% of Total
Prisons	4,105	71.8%
Community Supervision	1,135	19.9%
Tennessee Correction Academy	68	1.2%
Office of Investigations & Compliance (OIC)	78	1.4%
Central Office*	330	5.8%
Total	5,716	100%

*Central Office includes central office, major maintenance, and TDOC staff assigned to CoreCivic facilities.

Personnel by Class: June 30, 2009 - 2019

Personnel Type	FY09	FY10	FY11	FY12	FY13	FY14	FY15	FY16	FY17	FY18	FY19
Officials / Administrators	2.1%	2.1%	2.2%	2.2%	2.2%	2.3%	2.5%	2.6%	3.1%	3.2%	3.3%
Security	65.3%	64.7%	65.4%	65.3%	54.8%	56.5%	54.1%	56.3%	54.7%	52.4%	50.4%
Maintenance	4.4%	4.4%	4.1%	4.0%	3.3%	3.4%	3.3%	2.9%	1.1%	0.9%	0.9%
Professional	16.1%	16.9%	16.5%	16.6%	28.5%	27.5%	29.5%	28.4%	30.6%	33.1%	34.5%
Skilled	2.0%	1.9%	1.9%	2.0%	1.7%	1.8%	1.9%	1.9%	1.8%	2.0%	2.1%
Clerical	6.8%	6.5%	6.2%	6.2%	6.7%	6.6%	6.9%	6.4%	6.7%	6.8%	6.8%
Technical	3.4%	3.6%	3.7%	3.7%	2.7%	1.8%	1.8%	1.5%	1.7%	1.7%	1.4%

PRISON STAFFING



Security & Non-Security Full-Time Positions by Prison: June 30, 2019

Location	Security Positions	Non-Security Positions	Total Positions
BCCX	522	691	1,213
DSNF	284	213	497
MLTC	98	59	157
MCCX	505	153	658
NECX	352	122	474
NWCX	442	173	615
RMSI	283	52	335
TPFW	169	62	231
TCIX	226	187	413
WTSP	501	151	652
Total	3,382	1,863	5,245
Percent of Total	64.5%	35.5%	100%

* Includes DCCO, major maintenance, and TDOC staff at CoreCivic facilities.

Correctional Officer Series Vacancies: June 30, 2009 – 2019

Positions	2009	2010	2011	2012	2013	2014	2015	2016	2017	2018	2019
Vacant Positions	143	112	125	135	308	266	335	246	375	486	700
Total Positions	3,360	3,360	3,389	3,408	3,705	3,712	3,479	3,476	3,591	3,480	3,473
Vacancy Rate	4.3%	3.3%	3.7%	4.0%	8.3%	7.2%	9.6%	7.1%	10.4%	14.0%	20.2%

Correctional Officer Series Vacancies by Classification: June 30, 2019

Positions	Correctional Officer	Correctional Clerical Officer	Corporal	Sergeant	Lieutenant	Captain	TOTAL
Filled	1,851	121	418	251	70	58	2,769
Total	2,491	132	453	265	74	58	3,473
Vacancy Rate	17.2%	4.5%	7.2%	4.9%	5.4%	0.0%	14.0%

TDOC Prison	Separations	# Employees	FY 2018/19 Turnover
Bledsoe County Correctional Complex	160	469	34.1%
Mark Luttrell Transition Center	37	86	43.0%
Morgan County Correctional Complex	194	446	43.5%
Northeast Correctional Complex	118	332	35.5%
Northwest Correctional Complex	134	311	43.1%
Riverbend Maximum Security Institution	136	218	62.4%
DeBerry Special Needs Facility	90	194	46.4%
Tennessee Prison for Women	84	127	66.1%
Turney Center Industrial Complex	104	255	40.8%
West Tennessee State Penitentiary	103	403	25.6%
Office of Investigation and Compliance	2	8	25.0%
Total	1162	2849	40.8%

Correctional Officer Salary Comparison

State DOC	Average Starting Salary
North Carolina	\$31,200
Kentucky	\$30,000
Alabama	\$33,081
Virginia	\$33,394
Georgia	\$29,488
Missouri	\$31,288
Arkansas	\$29,046
Tennessee	\$32,524
Mississippi	\$25,651

Federal Bureau of Prisons	\$41,868
Davidson County Sheriff's Office	\$37,178
Shelby County Sheriff's Office	\$36,129
Hamilton County Sheriff's Office	\$34,557
Knox County Sheriff's Office	\$34,329

Community Supervision

**Security & Non-Security Full-Time Positions by
District & Other Units: June 30, 2019**

District/Other	Security Positions	Non-Security Positions	Total Positions
District 10	60	12	72
District 20	75	13	88
District 21	38	9	47
District 30	74	17	91
District 31	32	8	40
District 40	78	13	91
District 41	31	6	37
District 50	58	9	67
District 51	37	7	44
District 60	37	10	47
District 61	40	8	48
District 70	71	11	82
District 71	60	9	69
District 72	0	0	0
District 80	33	8	41
District 81	33	6	39
East PSU	55	0	55
Middle PSU	51	0	51
West PSU	39	0	39
DRCs	0	51	51
Other	0	144	144
Total	902	341	1,243
Percent of Total	0.0%	100.0%	100%

Probation/Parole Officer Series Vacancy Rates (June 30, 2019)

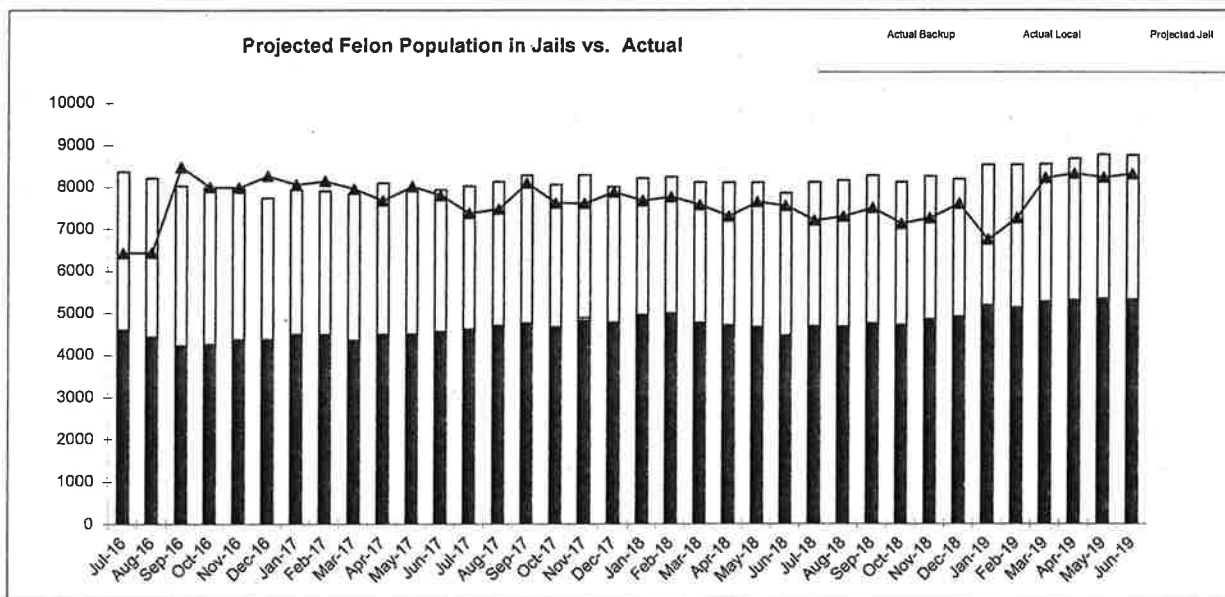
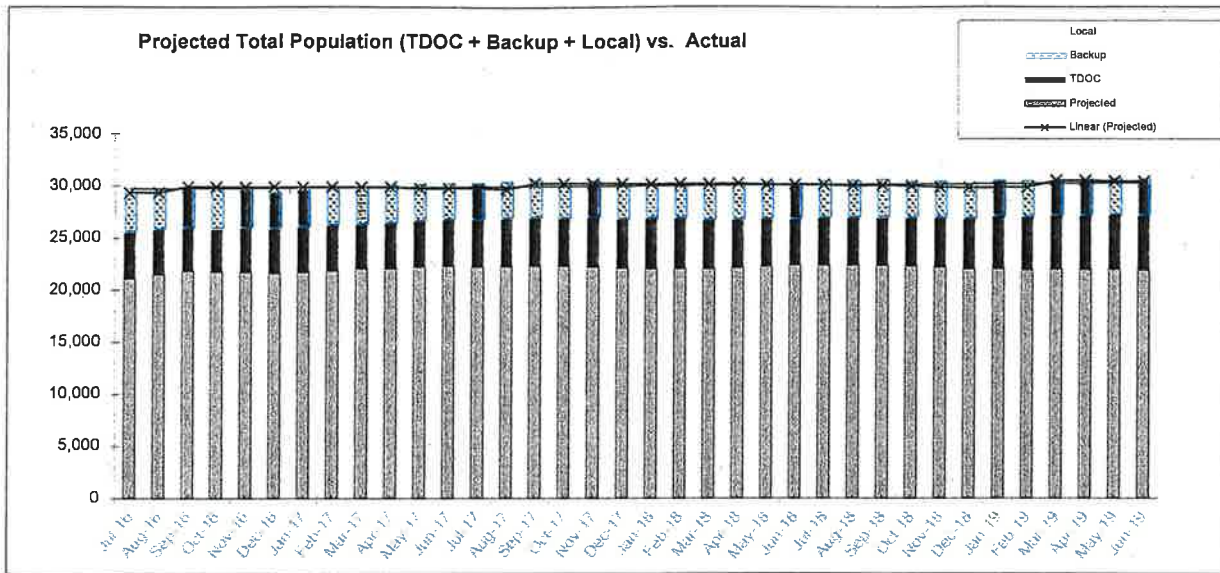
Positions	2013	2014	2015	2016	2017	2018	2019
Vacant	34	41	36	33	78	87	96
Total	793	790	754	748	797	819	904
Vacancy Rate	4.3%	5.2%	4.8%	4.4%	9.8%	10.6%	10.6%

Probation/Parole Officer Turnover Rates FY2014-FY2019

District	FY 2014	FY 2015	FY 2016	FY 2017	FY 2018	FY 2019
District 10	10.8%	18.1%	5.4%	10.9%	9.3%	8.9%
District 20	11.3%	17.9%	13.8%	14.3%	13.2%	23.1%
District 21	22.7%	14.7%	21.9%	15.8%	13.8%	25.0%
District 30	7.6%	13.8%	19.5%	13.9%	19.0%	18.6%
District 31	18.2%	18.5%	3.4%	13.8%	13.6%	25.0%
District 40	24.6%	15.0%	17.1%	22.0%	16.4%	30.4%
District 41	7.1%	7.3%	27.3%	3.3%	31.8%	28.6%
District 42	18.8%	30.6%	17.5%	30.0%	N/A*	N/A*
District 50	23.4%	13.0%	34.9%	8.5%	26.3%	51.4%
District 51	14.6%	25.8%	20.0%	25.0%	10.0%	13.8%
District 60	15.9%	25.0%	3.0%	20.0%	5.6%	20.6%
District 61	1.8%	5.4%	5.4%	4.3%	8.8%	22.6%
District 70	2.2%	6.9%	7.1%	18.5%	4.4%	27.1%
District 71	12.5%	23.1%	12.5%	31.8%	19.0%	26.2%
District 72	11.1%	5.9%	17.0%	31.1%	100.0%	N/A*
District 80	17.4%	11.4%	15.2%	8.8%	18.8%	14.3%
District 81	13.2%	46.2%	9.7%	8.6%	6.3%	6.7%
East PSU					4.8%	11.1%
Middle PSU					20.7%	36.7%
West PSU					7.1%	22.6%
DRCs					0.0%	0.0%
Other*					5.7%	47.4%
Total	13.2%	16.4%	15.2%	15.6%	13.7%	23.1%

* includes PPOs assigned to Central Office along with Institutional Probation/Parole Officers

PROJECTED INCARCERATED POPULATION VS. ACTUAL JULY 2016 - PRESENT



Projections Updated March, 2019

**INCARCERATED FELON POPULATION
PROJECTIONS VS. ACTUAL
Fiscal Years 2016/17- 2018/19**

2016/2017	PROJECTED	ACTUAL	DIFF	% DIFF
JULY	29,325	29,381	56	0.2%
AUGUST	29,334	29,630	296	1.0%
SEPTEMBER	29,918	29,796	-122	-0.4%
OCTOBER	29,884	29,654	-230	-0.8%
NOVEMBER	29,873	29,603	-270	-0.9%
DECEMBER	29,883	29,304	-579	-1.9%
JANUARY	29,855	29,565	-290	-1.0%
FEBRUARY	29,882	29,693	-189	-0.6%
MARCH	29,853	29,802	-51	-0.2%
APRIL	29,894	30,063	169	0.6%
MAY	29,751	30,092	341	1.1%
JUNE	29,771	30,161	390	1.3%
FY AVERAGE	29,769	29,729	-40	-0.1%

2017/2018	PROJECTED	ACTUAL	DIFF	% DIFF
JULY	29,756	30,185	429	1.4%
AUGUST	29,653	30,318	665	2.2%
SEPTEMBER	30,239	30,491	252	0.8%
OCTOBER	30,205	30,285	80	0.3%
NOVEMBER	30,194	30,421	227	0.8%
DECEMBER	30,204	30,054	-150	-0.5%
JANUARY	30,176	30,176	0	0.0%
FEBRUARY	30,203	30,193	-10	0.0%
MARCH	30,174	30,082	-92	-0.3%
APRIL	30,215	30,186	-29	-0.1%
MAY	30,072	30,321	249	0.8%
JUNE	30,092	30,187	95	0.3%
FY AVERAGE	30,099	30,242	143	0.5%

2018/2019	PROJECTED	ACTUAL	DIFF	% DIFF
JULY	30,077	30,399	322	1.1%
AUGUST	29,974	30,433	459	1.5%
SEPTEMBER	30,034	30,547	513	1.7%
OCTOBER	29,993	30,361	368	1.2%
NOVEMBER	29,851	30,369	518	1.7%
DECEMBER	29,804	30,128	324	1.1%
JANUARY	29,840	30,473	633	2.1%
FEBRUARY	29,851	30,419	568	1.9%
MARCH	30,512	30,478	-34	-0.1%
APRIL	30,480	30,560	80	0.3%
MAY	30,420	30,660	240	0.8%
JUNE	30,397	30,613	216	0.7%
FY AVERAGE	30,103	30,453	350	1.2%

These tables compare the actual population to the projection model. Thus, whenever the actual population exceeds the projected population, the % difference is interpreted as exceeding the projected population.

*Note: Projections were updated March, 2019.
Averages are column averages.*

INCARCERATED FELON POPULATIONS
Fiscal Years 2012/13 - 2018/19
as of June 30, 2019

	Total Felon Population (A+B+C)	Monthly Change	Monthly Percent Change	TDOC Facilities (A)	Percent of Total	TDOC Backup (B)	Percent of Total	Locally Sentenced (C)	Percent of Total	Local Total (B+C)
FY AVG.										
2012/2013	29,654			20,181	68.1%	4,913	16.6%	4,560	15.4%	9,473
2013/2014	29,758			20,945	70.4%	4,546	15.3%	4,267	14.3%	8,813
2014/2015	29,572			20,870	70.6%	4,685	15.8%	4,017	13.6%	8,702
2015/2016	29,103			20,275	69.7%	5,015	17.2%	3,813	13.1%	8,828

2016/2017

JULY	29,381	19	0.1%	21,025	71.6%	4,600	15.7%	3,756	12.8%	8,356
AUGUST	29,630	249	0.8%	21,421	72.3%	4,436	15.0%	3,773	12.7%	8,209
SEPTEMBER	29,796	166	0.6%	21,773	73.1%	4,224	14.2%	3,799	12.8%	8,023
OCTOBER	29,654	-142	-0.5%	21,670	73.1%	4,260	14.4%	3,724	12.6%	7,984
NOVEMBER	29,603	-51	-0.2%	21,641	73.1%	4,372	14.8%	3,590	12.1%	7,962
DECEMBER	29,304	-299	-1.0%	21,566	73.6%	4,368	14.9%	3,370	11.5%	7,738
JANUARY	29,565	261	0.9%	21,644	73.2%	4,492	15.2%	3,429	11.6%	7,921
FEBRUARY	29,693	128	0.4%	21,789	73.4%	4,486	15.1%	3,418	11.5%	7,904
MARCH	29,802	109	0.4%	21,967	73.7%	4,351	14.6%	3,484	11.7%	7,835
APRIL	30,063	261	0.9%	21,968	73.1%	4,491	14.9%	3,604	12.0%	8,095
MAY	30,092	29	0.1%	22,157	73.6%	4,492	14.9%	3,443	11.4%	7,935
JUNE	30,161	69	0.2%	22,225	73.7%	4,556	15.1%	3,380	11.2%	7,936
FY Average	29,729	67	0.2%	21,737	73.1%	4,427	14.9%	3,564	12.0%	7,992

2017/2018

JULY	30,185	24	0.1%	22,168	73.4%	4,613	15.3%	3,404	11.3%	8,017
AUGUST	30,318	133	0.4%	22,196	73.2%	4,698	15.5%	3,424	11.3%	8,122
SEPTEMBER	30,491	173	0.6%	22,214	72.9%	4,758	15.6%	3,519	11.5%	8,277
OCTOBER	30,285	-206	-0.7%	22,229	73.4%	4,669	15.4%	3,387	11.2%	8,056
NOVEMBER	30,421	136	0.4%	22,141	72.8%	4,883	16.1%	3,397	11.2%	8,280
DECEMBER	30,054	-367	-1.2%	22,052	73.4%	4,776	15.9%	3,226	10.7%	8,002
JANUARY	30,176	122	0.4%	21,973	72.8%	4,959	16.4%	3,244	10.8%	8,203
FEBRUARY	30,193	17	0.1%	21,960	72.7%	4,991	16.5%	3,242	10.7%	8,233
MARCH	30,082	-111	-0.4%	21,972	73.0%	4,762	15.8%	3,348	11.1%	8,110
APRIL	30,186	104	0.3%	22,086	73.2%	4,706	15.6%	3,394	11.2%	8,100
MAY	30,321	135	0.4%	22,220	73.3%	4,657	15.4%	3,444	11.4%	8,101
JUNE	30,187	-134	-0.4%	22,339	74.0%	4,463	14.8%	3,385	11.2%	7,848
FY Average	30,242	2	0.0%	22,129	73.2%	4,745	15.7%	3,368	11.1%	8,112

2018/2019

JULY	30,399	212	0.7%	22,295	73.3%	4,680	15.4%	3,424	11.3%	8,104
AUGUST	30,433	34	0.1%	22,281	73.2%	4,670	15.3%	3,482	11.4%	8,152
SEPTEMBER	30,547	114	0.4%	22,279	72.9%	4,748	15.5%	3,520	11.5%	8,268
OCTOBER	30,361	-186	-0.6%	22,243	73.3%	4,710	15.5%	3,408	11.2%	8,118
NOVEMBER	30,369	8	0.0%	22,119	72.8%	4,854	16.0%	3,396	11.2%	8,250
DECEMBER	30,128	-241	-0.8%	21,945	72.8%	4,908	16.3%	3,275	10.9%	8,183
JANUARY	30,473	345	1.1%	21,942	72.0%	5,184	17.0%	3,347	11.0%	8,531
FEBRUARY	30,419	-54	-0.2%	21,888	72.0%	5,129	16.9%	3,402	11.2%	8,531
MARCH	30,478	59	0.2%	21,933	72.0%	5,261	17.3%	3,284	10.8%	8,545
APRIL	30,560	82	0.3%	21,889	71.6%	5,302	17.3%	3,369	11.0%	8,671
MAY	30,660	100	0.3%	21,890	71.4%	5,338	17.4%	3,432	11.2%	8,770
JUNE	30,613	-47	-0.2%	21,855	71.4%	5,319	17.4%	3,439	11.2%	8,758
FY Average	30,453	36	0.1%	22,047	72.4%	5,009	16.4%	3,398	11.2%	8,407

Population figures on each year summary line are monthly averages.

INCARCERATED FELON POPULATIONS
Fiscal Years 2001/02 - 2017/18

INCARCERATED FELON POPULATION TOTALS AT FISCAL YEAR END (JUNE 30) FY 2001/02 - FY 2017/18

	TOTAL FELON POP (A+B+C)	TOTAL CHANGE	PERCENT CHANGE	TDOC FACILITIES (A)	PERCENT OF TOTAL	TDOC BACKUP (B)	PERCENT OF TOTAL	LOCALLY SENTENCED (C)	PERCENT OF TOTAL	LOCAL JAIL TOTAL (B+C)
2001-02	24,235	1,173	5.1%	17,715	73.1%	2,505	10.3%	4,015	16.6%	6,520
2002-03	25,469	1,234	5.1%	19,408	76.2%	1,956	7.7%	4,105	16.1%	6,061
2003-04	25,865	396	1.6%	19,406	75.0%	2,110	8.2%	4,347	16.8%	6,457
2004-05	26,209	344	1.3%	19,432	74.1%	2,321	8.9%	4,456	17.0%	6,777
2005-06	26,212	3	0.0%	19,433	74.1%	2,322	8.9%	4,457	17.0%	6,779
2006-07	26,551	339	1.3%	19,341	72.8%	2,023	7.6%	5,187	19.5%	7,210
2007-08	26,998	447	1.7%	19,497	72.2%	2,204	8.2%	5,297	19.6%	7,501
2008-09	27,325	327	1.2%	19,462	71.2%	2,465	9.0%	5,398	19.8%	7,863
2009-10	27,164	-161	-0.6%	20,213	74.4%	2,573	9.5%	4,378	16.1%	6,951
2010-11	28,473	1,309	4.8%	20,428	71.7%	3,696	13.0%	4,349	15.3%	8,045
2011-12	29,869	1,396	4.9%	20,236	67.7%	4,911	16.4%	4,722	15.8%	9,633
2012-13	29,654	-215	-0.7%	20,181	68.1%	4,913	16.6%	4,560	15.4%	9,473
2013-14	29,885	231	0.8%	21,246	71.1%	4,483	15.0%	4,156	13.9%	8,639
2014-15	29,263	-622	-2.1%	20,349	69.5%	5,007	17.1%	3,907	13.4%	8,914
2015-16	29,362	99	0.3%	20,802	70.8%	4,719	16.1%	3,841	13.1%	8,560
2016-17	30,161	799	2.7%	22,225	73.7%	4,556	15.1%	3,360	11.2%	7,936
2017-18	30,187	26	0.1%	22,339	74.0%	4,463	14.8%	3,365	11.2%	7,848

INCARCERATED FELON POPULATION AVERAGES FY 2001/02 - FY 2017/18

	AVG TOTAL FELON POP (A+B+C)	ANNUAL CHANGE	PERCENT CHANGE	TDOC FACILITIES (A)	PERCENT OF TOTAL	TDOC BACKUP (B)	PERCENT OF TOTAL	LOCALLY SENTENCED (C)	PERCENT OF TOTAL	LOCAL JAIL TOTAL (B+C)
2001-02	23,891	1,266	5.6%	17,611	73.7%	2,143	9.0%	4,137	17.3%	6,280
2002-03	24,913	1,022	4.3%	18,436	74.0%	2,313	9.3%	4,164	16.7%	6,477
2003-04	25,635	722	2.9%	19,404	75.7%	2,021	7.9%	4,210	16.4%	6,231
2004-05	26,036	401	1.6%	19,431	74.6%	2,180	8.4%	4,425	17.0%	6,605
2005-06	26,323	287	1.1%	19,406	73.7%	2,293	8.7%	4,624	17.6%	6,917
2006-07	26,100	-223	-0.8%	19,379	74.2%	1,865	7.2%	4,836	18.5%	6,721
2007-08	26,801	701	2.7%	19,428	72.5%	2,025	7.6%	5,347	20.0%	7,372
2008-09	27,411	610	2.3%	19,463	71.0%	2,509	9.2%	5,440	19.8%	7,949
2009-10	27,311	-100	-0.4%	20,028	73.3%	2,281	8.4%	5,002	18.3%	7,283
2010-11	27,762	471	1.7%	20,274	73.0%	2,966	10.7%	4,542	16.3%	7,508
2011-12	29,232	1,450	5.2%	20,217	69.2%	4,456	15.2%	4,559	15.6%	9,015
2012-13	29,654	422	1.4%	20,181	68.1%	4,913	16.6%	4,560	15.4%	9,473
2013-14	29,758	105	0.4%	20,945	70.4%	4,546	15.3%	4,267	14.3%	8,813
2014-15	29,572	-186	-0.6%	20,870	70.6%	4,665	15.8%	4,017	13.6%	8,702
2015-16	29,103	-469	-1.6%	20,275	69.7%	5,015	17.2%	3,813	13.1%	8,828
2016-17	29,729	626	2.1%	21,737	73.1%	4,427	14.9%	3,564	12.0%	7,992
2017-18	30,242	513	1.7%	22,129	73.2%	4,745	15.7%	3,368	11.1%	8,112

LOCAL JAIL POPULATIONS FISCAL YEARS 2017/18 - 2018/19

as of June 30, 2019
(Source: TDOC Jail Summary Report)

2017/2018	Total Jail Pop.	Monthly Change	% Change	Total TDOC Inmates		Federal & Others	Other Convicted Felons	Convicted Misdem.	Pre-Trial Detainees	% TDOC Felons	% Local Felons	% Federal & Others	% Other Conv. Felons	% Conv. Misdem.	% Pre-Trial Detainees
				Immater.	Local Felons										
JULY	29,957	588	2.0%	4,613	3,404	805	765	5,189	15,181	15%	11%	3%	3%	17%	51%
AUGUST	29,934	-23	-0.1%	4,698	3,424	813	775	5,293	14,931	16%	11%	3%	3%	18%	50%
SEPTEMBER	30,453	519	1.7%	4,758	3,519	835	839	5,351	15,151	16%	12%	3%	3%	18%	50%
OCTOBER	30,122	-331	-1.1%	4,669	3,387	854	871	4,903	15,438	16%	11%	3%	3%	16%	51%
NOVEMBER	29,833	-289	-1.0%	4,883	3,397	833	853	4,913	14,954	16%	11%	3%	3%	16%	50%
DECEMBER	28,827	-1,006	-3.4%	4,776	3,226	751	793	4,393	14,888	17%	11%	3%	3%	15%	52%
JANUARY	29,897	1,070	3.7%	4,959	3,244	843	825	4,660	15,366	17%	11%	3%	3%	16%	51%
FEBRUARY	30,182	285	1.0%	4,991	3,242	858	833	4,728	15,530	17%	11%	3%	3%	16%	51%
MARCH	30,590	408	1.4%	4,762	3,348	827	836	5,062	15,735	16%	11%	3%	3%	17%	51%
APRIL	30,448	-142	-0.5%	4,706	3,394	927	882	4,901	15,638	15%	11%	3%	3%	16%	51%
MAY	30,701	253	0.8%	4,657	3,444	924	862	5,110	15,704	15%	11%	3%	3%	17%	51%
JUNE	31,142	441	1.4%	4,463	3,385	889	793	5,184	16,428	14%	11%	3%	3%	17%	53%
AVERAGE	30,174			4,745	3,368	846.58	827	4,976	15,412	16%	11%	3%	3%	16%	51%

2018/2019	Total Jail Pop.	Monthly Change	% Change	Total TDOC Inmates		Federal & Others	Other Convicted Felons	Convicted Misdem.	Pre-Trial Detainees	% TDOC Felons	% Local Felons	% Federal & Others	% Other Conv. Felons	% Conv. Misdem.	% Pre-Trial Detainees
				Immater.	Local Felons										
JULY	31,436	294	0.9%	4,680	3,424	947	878	5,195	16,311	15%	11%	3%	3%	17%	52%
AUGUST	31,715	279	0.9%	4,670	3,492	979	876	5,522	16,186	15%	11%	3%	3%	17%	51%
SEPTEMBER	31,863	-52	-0.2%	4,748	3,520	1089	811	5,406	16,089	15%	11%	3%	3%	17%	51%
OCTOBER	31,437	-226	-0.7%	4,710	3,408	1072	811	5,065	16,371	15%	11%	3%	3%	16%	52%
NOVEMBER	30,524	-913	-2.9%	4,854	3,386	1092	831	5,154	15,197	16%	11%	4%	3%	17%	50%
DECEMBER	30,167	-357	-1.2%	4,908	3,275	1039	786	4,496	15,663	16%	11%	3%	3%	15%	52%
JANUARY	30,814	647	2.1%	5,184	3,347	987	782	4,905	15,609	17%	11%	3%	3%	16%	51%
FEBRUARY	30,962	148	0.5%	5,129	3,402	1048	874	4,948	15,561	17%	11%	3%	3%	16%	50%
MARCH	30,894	-68	-0.2%	5,261	3,284	1025	838	4,979	15,507	17%	11%	3%	3%	16%	50%
APRIL	31,156	262	0.8%	5,302	3,369	1019	860	5,109	15,497	17%	11%	3%	3%	16%	50%
MAY	31,391	235	0.8%	5,338	3,432	1089	862	5,070	15,600	17%	11%	3%	3%	16%	50%
JUNE	31,806	415	1.3%	5,319	3,439	1021	888	5,193	15,946	17%	11%	3%	3%	16%	50%
AVERAGE	31,164			5,009	3,386	1033.92	842	5,087	15,795	16%	11%	3%	3%	16%	51%

FELON ADMISSIONS IN TENNESSEE FISCAL YEAR 2018/19

TOTAL ADMISSIONS	PERCENT CHANGE	NEW COMMITS	PERCENT OF TOTAL	VIOLATORS RETURNED	PERCENT OF TOTAL	ESCAPEES & OTHERS	PERCENT OF TOTAL
------------------	----------------	-------------	------------------	--------------------	------------------	-------------------	------------------

2018/2019

TDOC*

	TOTAL ADMISSIONS	PERCENT CHANGE	NEW COMMITS	PERCENT OF TOTAL	VIOLATORS RETURNED	PERCENT OF TOTAL	ESCAPEES & OTHERS	PERCENT OF TOTAL
JULY	978	22.9%	581	59.4%	389	39.8%	8	0.8%
AUGUST	983	0.5%	554	56.4%	420	42.7%	9	0.9%
SEPTEMBER	863	-12.2%	519	60.1%	336	38.9%	8	0.9%
OCTOBER	868	0.6%	539	62.1%	327	37.7%	2	0.2%
NOVEMBER	885	2.0%	523	59.1%	350	39.5%	12	1.4%
DECEMBER	665	-24.9%	355	53.4%	305	45.9%	5	0.8%
JANUARY	939	41.2%	570	60.7%	363	38.7%	6	0.6%
FEBRUARY	831	-11.5%	525	63.2%	302	36.3%	4	0.5%
MARCH	856	3.0%	513	59.9%	335	39.1%	8	0.9%
APRIL	877	2.5%	511	58.3%	357	40.7%	9	1.0%
MAY	837	-4.6%	500	59.7%	333	39.8%	4	0.5%
JUNE	424	-49.3%	235	55.4%	188	44.3%	1	0.2%
TOTAL	10,006		5,925	59.2%	4,005	40.0%	76	0.8%

2018/2019

LOCALLY SENTENCED

	TOTAL ADMISSIONS	PERCENT CHANGE	NEW COMMITS	PERCENT OF TOTAL	VIOLATORS RETURNED	PERCENT OF TOTAL	ESCAPEES & OTHERS	PERCENT OF TOTAL
JULY	139	7.8%	100	71.9%	39	28.1%	0	0.0%
AUGUST	171	23.0%	120	70.2%	49	28.7%	2	1.2%
SEPTEMBER	128	-25.1%	90	70.3%	36	28.1%	2	1.6%
OCTOBER	144	12.5%	105	72.9%	37	25.7%	2	1.4%
NOVEMBER	156	8.3%	117	75.0%	38	24.4%	1	0.6%
DECEMBER	103	-34.0%	69	67.0%	30	29.1%	4	3.9%
JANUARY	133	29.1%	95	71.4%	37	27.8%	1	0.8%
FEBRUARY	168	26.3%	131	78.0%	35	20.8%	2	1.2%
MARCH	101	-39.9%	72	71.3%	28	27.7%	1	1.0%
APRIL	115	13.9%	83	72.2%	29	25.2%	3	2.6%
MAY	129	12.2%	83	64.3%	46	35.7%	0	0.0%
JUNE	80	-38.0%	59	73.8%	21	26.3%	0	0.0%
TOTAL	1,567		1,124	71.7%	425	27.1%	18	1.1%

2018/2019

SYSTEM TOTAL

	TOTAL ADMISSIONS	PERCENT CHANGE	NEW COMMITS	PERCENT OF TOTAL	VIOLATORS RETURNED	PERCENT OF TOTAL	ESCAPEES & OTHERS	PERCENT OF TOTAL
JULY	1,117	20.8%	681	61.0%	428	38.3%	8	0.7%
AUGUST	1,154	3.3%	674	58.4%	469	40.6%	11	1.0%
SEPTEMBER	991	-14.1%	609	61.5%	372	37.5%	10	1.0%
OCTOBER	1,012	2.1%	644	63.6%	364	36.0%	4	0.4%
NOVEMBER	1,041	2.9%	640	61.5%	388	37.3%	13	1.2%
DECEMBER	768	-26.2%	424	55.2%	335	43.6%	9	1.2%
JANUARY	1,072	39.6%	665	62.0%	400	37.3%	7	0.7%
FEBRUARY	999	-6.8%	656	65.7%	337	33.7%	6	0.6%
MARCH	957	-4.2%	585	61.1%	363	37.9%	9	0.9%
APRIL	992	3.7%	594	59.9%	386	38.9%	12	1.2%
MAY	966	-2.6%	583	60.4%	379	39.2%	4	0.4%
JUNE	504	-47.8%	294	58.3%	209	41.5%	1	0.2%
TOTAL	11,573		7,049	60.9%	4,430	38.3%	94	0.8%

Admission statistics are incomplete because all data are not received by TDOC immediately after sentencing. In some cases information is not received until several months after sentencing; therefore, the numbers for any given month may be different from the previous month's report.

**The "TDOC" category of admissions is a combination of convicted felons housed in DOC facilities and jail backup.*

**FELON ADMISSIONS IN TENNESSEE
FISCAL YEAR 2017/18**

TOTAL ADMISSIONS	PERCENT CHANGE	NEW COMMITS	PERCENT OF TOTAL	VIOLATORS RETURNED	PERCENT OF TOTAL	ESCAPEES & OTHERS	PERCENT OF TOTAL
------------------	----------------	-------------	------------------	--------------------	------------------	-------------------	------------------

2017/2018

TDOC*

JULY	850	-2.3%	489	57.5%	353	41.5%	8	0.9%
AUGUST	974	14.6%	550	56.5%	413	42.4%	11	1.1%
SEPTEMBER	910	-6.6%	540	59.3%	363	39.9%	7	0.8%
OCTOBER	865	-4.9%	494	57.1%	362	41.8%	9	1.0%
NOVEMBER	929	7.4%	552	59.4%	363	39.1%	14	1.5%
DECEMBER	709	-23.7%	425	59.9%	279	39.4%	5	0.7%
JANUARY	850	19.9%	537	63.2%	307	36.1%	6	0.7%
FEBRUARY	844	-0.7%	490	58.1%	347	41.1%	7	0.8%
MARCH	862	2.1%	525	60.9%	328	38.1%	9	1.0%
APRIL	968	12.3%	583	60.2%	377	38.9%	8	0.8%
MAY	960	-0.8%	569	59.3%	384	40.0%	7	0.7%
JUNE	796	-17.1%	454	57.0%	332	41.7%	10	1.3%
TOTAL	10,517		6,208	59.0%	4,208	40.0%	101	1.0%

2017/2018

LOCALLY SENTENCED

JULY	141	0.7%	93	66.0%	45	31.9%	3	2.1%
AUGUST	148	5.0%	105	70.9%	41	27.7%	2	1.4%
SEPTEMBER	137	-7.4%	90	65.7%	47	34.3%	0	0.0%
OCTOBER	140	2.2%	92	65.7%	48	34.3%	0	0.0%
NOVEMBER	145	3.6%	102	70.3%	43	29.7%	0	0.0%
DECEMBER	95	-34.5%	60	63.2%	34	35.8%	1	1.1%
JANUARY	152	60.0%	111	73.0%	38	25.0%	3	2.0%
FEBRUARY	147	-3.3%	88	59.9%	57	38.8%	2	1.4%
MARCH	160	8.8%	113	70.6%	46	28.8%	1	0.6%
APRIL	130	-18.8%	99	76.2%	31	23.8%	0	0.0%
MAY	156	20.0%	103	66.0%	51	32.7%	2	1.3%
JUNE	129	-17.3%	90	69.8%	38	29.5%	1	0.8%
TOTAL	1,680		1,146	68.2%	519	30.9%	15	0.9%

2017/2018

SYSTEM TOTAL

JULY	991	-1.9%	582	58.7%	398	40.2%	11	1.1%
AUGUST	1,122	13.2%	655	58.4%	454	40.5%	13	1.2%
SEPTEMBER	1,047	-6.7%	630	60.2%	410	39.2%	7	0.7%
OCTOBER	1,005	-4.0%	586	58.3%	410	40.8%	9	0.9%
NOVEMBER	1,074	6.9%	654	60.9%	406	37.8%	14	1.3%
DECEMBER	804	-25.1%	485	60.3%	313	38.9%	6	0.7%
JANUARY	1,002	24.6%	648	64.7%	345	34.4%	9	0.9%
FEBRUARY	991	-1.1%	578	58.3%	404	40.8%	9	0.9%
MARCH	1,022	3.1%	638	62.4%	374	36.6%	10	1.0%
APRIL	1,098	7.4%	682	62.1%	408	37.2%	8	0.7%
MAY	1,116	1.6%	672	60.2%	435	39.0%	9	0.8%
JUNE	925	-17.1%	544	58.8%	370	40.0%	11	1.2%
TOTAL	12,197		7,354	60.3%	4,727	38.8%	116	1.0%

Admission statistics are incomplete because all data are not received by TDOC immediately after sentencing. In some cases information is not received until several months after sentencing; therefore, the numbers for any given month may be different from the previous month's report.

**The "TDOC" category of admissions is a combination of convicted felons housed in DOC facilities and jail backup.*

**FELON ADMISSIONS IN TENNESSEE
FISCAL YEARS 2003/04 - 2017/18**

	TOTAL ADMISSIONS	PERCENT CHANGE	NEW COMMITS	PERCENT OF TOTAL	VIOLATORS RETURNED	PERCENT OF TOTAL	ESCAPEES & OTHERS	PERCENT OF TOTAL
TDOC*								
2003-04	10,262	7.7%	6,086	59.3%	4,047	39.4%	129	1.3%
2004-05	10,417	1.5%	6,027	57.9%	4,275	41.0%	115	1.1%
2005-06	10,913	4.8%	6,299	57.7%	4,492	41.2%	122	1.1%
2006-07	11,208	2.7%	6,343	56.6%	4,733	42.2%	132	1.2%
2007-08	11,197	-0.1%	6,326	56.5%	4,748	42.4%	123	1.1%
2008-09	11,111	-0.8%	6,486	58.4%	4,500	40.5%	125	1.1%
2009-10	10,425	-6.2%	6,328	60.7%	3,990	38.3%	107	1.0%
2010-11	11,329	8.7%	6,816	60.2%	4,366	38.5%	147	1.3%
2011-12	11,767	3.9%	7,033	59.8%	4,603	39.1%	131	1.1%
2012-13	11,824	0.5%	6,937	58.7%	4,753	40.2%	134	1.1%
2013-14	11,786	-0.3%	6,819	57.9%	4,861	41.2%	106	0.9%
2014-15	10,887	-7.6%	6,128	56.3%	4,639	42.6%	120	1.1%
2015-16	10,534	-3.2%	6,022	57.2%	4,379	41.6%	133	1.3%
2016-17	10,483	-0.5%	6,146	58.6%	4,254	40.6%	83	0.8%
2017-18	10,517	0.3%	6,208	59.0%	4,208	40.0%	101	1.0%
LOCALLY SENTENCED								
2003-04	3,582	-4.0%	2,350	65.6%	1,214	33.9%	18	0.5%
2004-05	3,759	4.9%	2,413	64.2%	1,327	35.3%	19	0.5%
2005-06	3,638	-3.2%	2,321	64.2%	1,296	35.6%	21	0.6%
2006-07	3,667	0.8%	2,322	63.3%	1,332	36.3%	13	0.4%
2007-08	3,615	-1.4%	2,443	67.6%	1,152	31.9%	20	0.6%
2008-09	3,457	-4.4%	2,292	66.3%	1,147	33.2%	18	0.5%
2009-10	3,363	-2.7%	2,357	70.1%	988	29.4%	18	0.5%
2010-11	3,326	-1.1%	2,354	70.8%	934	28.1%	38	1.1%
2011-12	3,438	3.4%	2,382	69.3%	1,012	29.4%	44	1.3%
2012-13	2,889	-16.0%	1,877	65.0%	964	33.4%	48	1.7%
2013-14	2,598	-10.1%	1,672	64.4%	884	34.0%	42	1.6%
2014-15	2,308	-11.2%	1,573	68.2%	700	30.3%	35	1.5%
2015-16	2,230	-3.4%	1,494	67.0%	694	31.1%	42	1.9%
2016-17	1,852	-17.0%	1,236	66.7%	583	31.5%	33	1.8%
2017-18	1,680	-9.3%	1,146	68.2%	519	30.9%	15	0.9%
SYSTEM TOTAL								
2003-04	13,844	4.4%	8,436	60.9%	5,261	38.0%	147	1.1%
2004-05	14,176	2.4%	8,440	59.5%	5,602	39.5%	134	0.9%
2005-06	14,551	2.6%	8,620	59.2%	5,788	39.8%	143	1.0%
2006-07	14,875	2.2%	8,665	58.3%	6,065	40.8%	145	1.0%
2007-08	14,812	-0.4%	8,769	59.2%	5,900	39.8%	143	1.0%
2008-09	14,568	-1.6%	8,778	60.3%	5,647	38.8%	143	1.0%
2009-10	13,788	-5.4%	8,685	63.0%	4,978	36.1%	125	0.9%
2010-11	14,655	6.3%	9,170	62.6%	5,300	36.2%	185	1.3%
2011-12	15,205	3.8%	9,415	61.9%	5,615	36.9%	175	1.2%
2012-13	14,713	-3.2%	8,814	59.9%	5,717	38.9%	182	1.2%
2013-14	14,384	-2.2%	8,491	59.0%	5,745	39.9%	148	1.0%
2014-15	13,195	-8.3%	7,701	58.4%	5,339	40.5%	155	1.2%
2015-16	12,764	-3.3%	7,516	58.9%	5,073	39.7%	175	1.4%
2016-17	12,335	-3.4%	7,382	59.8%	4,837	39.2%	116	0.9%
2017-18	12,197	-1.1%	7,354	60.3%	4,727	38.8%	116	1.0%

*The "TDOC" category of admissions is a combination of convicted felons housed in DOC facilities and jail backup

**FELON INMATE RELEASES IN TENNESSEE FISCAL YEAR
2018/19**

TOTAL RELEASES	PERCENT CHANGE	PAROLE	PERCENT OF TOTAL	PROBATION COM. COR.	PERCENT OF TOTAL	EXPIRATION & OTHERS	PERCENT OF TOTAL
-------------------	-------------------	--------	---------------------	------------------------	---------------------	------------------------	---------------------

2018/2019

TDOC

JULY	420	-7.3%	176	41.9%	45	10.7%	199	47.4%
AUGUST	494	17.6%	204	41.3%	74	15.0%	216	43.7%
SEPTEMBER	404	-18.2%	143	35.4%	51	12.6%	210	52.0%
OCTOBER	467	15.6%	187	40.0%	53	11.3%	227	48.6%
NOVEMBER	470	0.6%	197	41.9%	44	9.4%	229	48.7%
DECEMBER	432	-8.1%	165	38.2%	44	10.2%	223	51.6%
JANUARY	385	-10.9%	133	34.5%	41	10.6%	211	54.8%
FEBRUARY	403	4.7%	171	42.4%	37	9.2%	195	48.4%
MARCH	451	11.9%	194	43.0%	41	9.1%	216	47.9%
APRIL	449	-0.4%	183	40.8%	36	8.0%	230	51.2%
MAY	420	-6.5%	185	44.0%	28	6.7%	207	49.3%
JUNE	397	-5.5%	169	42.6%	35	8.8%	193	48.6%
TOTAL	5,192		2,107	40.6%	529	10.2%	2,556	49.2%

2018/2019

TDOC BACKUP

JULY	534	-7.6%	38	7.1%	319	59.7%	177	33.1%
AUGUST	640	19.9%	47	7.3%	401	62.7%	192	30.0%
SEPTEMBER	561	-12.3%	28	5.0%	355	63.3%	178	31.7%
OCTOBER	595	6.1%	48	8.1%	358	60.2%	189	31.8%
NOVEMBER	562	-5.5%	47	8.4%	344	61.2%	171	30.4%
DECEMBER	497	-11.6%	46	9.3%	281	56.5%	170	34.2%
JANUARY	516	3.8%	25	4.8%	303	58.7%	188	36.4%
FEBRUARY	500	-3.1%	42	8.4%	260	52.0%	198	39.6%
MARCH	484	-3.2%	38	7.9%	286	59.1%	160	33.1%
APRIL	518	7.0%	44	8.5%	287	51.5%	207	40.0%
MAY	602	16.2%	43	7.1%	366	60.8%	193	32.1%
JUNE	510	-15.3%	43	8.4%	275	53.9%	192	37.6%
TOTAL	6,519		489	7.5%	3,815	58.5%	2,215	34.0%

2018/2019

LOCALLY SENTENCED

JULY	120	-3.2%	7	5.8%	46	38.4%	67	55.8%
AUGUST	137	14.2%	7	5.1%	62	45.4%	68	49.6%
SEPTEMBER	149	8.8%	20	13.4%	44	29.6%	85	57.0%
OCTOBER	124	-16.8%	15	12.1%	38	30.7%	71	57.3%
NOVEMBER	151	21.8%	9	6.0%	68	45.1%	74	49.0%
DECEMBER	103	-31.8%	10	9.7%	36	35.1%	57	55.3%
JANUARY	109	5.8%	6	5.5%	33	30.4%	70	64.2%
FEBRUARY	121	11.0%	3	2.5%	40	33.2%	78	64.5%
MARCH	119	-1.7%	15	12.6%	39	32.9%	65	54.6%
APRIL	118	-0.8%	9	7.6%	47	39.9%	62	52.5%
MAY	133	12.7%	5	3.8%	59	44.5%	69	51.9%
JUNE	107	-19.5%	10	9.3%	43	40.3%	54	50.5%
TOTAL	1,491		116	7.8%	555	37.2%	820	55.0%

2018/2019

SYSTEM TOTAL

JULY	1,074	-7.0%	221	20.6%	410	38.2%	443	41.2%
AUGUST	1,271	18.3%	258	20.3%	537	42.3%	476	37.5%
SEPTEMBER	1,114	-12.4%	191	17.1%	450	40.4%	473	42.5%
OCTOBER	1,186	6.5%	250	21.1%	449	37.9%	487	41.1%
NOVEMBER	1,183	-0.3%	253	21.4%	456	38.5%	474	40.1%
DECEMBER	1,032	-12.8%	221	21.4%	361	35.0%	450	43.6%
JANUARY	1,010	-2.1%	164	16.2%	377	37.3%	469	46.4%
FEBRUARY	1,024	1.4%	216	21.1%	337	32.9%	471	46.0%
MARCH	1,054	2.9%	247	23.4%	366	34.7%	441	41.8%
APRIL	1,085	2.9%	236	21.8%	350	32.3%	499	46.0%
MAY	1,155	6.5%	233	20.2%	453	39.2%	469	40.6%
JUNE	1,014	-12.2%	222	21.9%	353	34.8%	439	43.3%
TOTAL	13,202		2,712	20.5%	4,899	37.1%	5,591	42.3%

Release statistics are incomplete because all data are not received by TDOC immediately after inmates are released. Therefore, the numbers for any given month may be different from the previous month's report.

FELON INMATE RELEASES IN TENNESSEE FISCAL YEAR 2017/18

2017/2018	TOTAL RELEASES	PERCENT CHANGE	PAROLE	PERCENT OF TOTAL	PROBATION COM. COR.	PERCENT OF TOTAL	EXPIRATION & OTHERS	PERCENT OF TOTAL
JULY	430	5.4%	177	41.2%	52	12.1%	201	46.7%
AUGUST	414	-3.7%	185	44.7%	44	10.6%	185	44.7%
SEPTEMBER	443	7.0%	188	42.4%	54	12.2%	201	45.4%
OCTOBER	452	2.0%	185	40.9%	70	15.5%	197	43.6%
NOVEMBER	474	4.9%	227	47.9%	55	11.6%	192	40.5%
DECEMBER	499	5.3%	226	45.3%	66	13.2%	207	41.5%
JANUARY	419	-16.0%	211	50.4%	36	8.6%	172	41.1%
FEBRUARY	448	6.9%	211	47.1%	40	8.9%	197	44.0%
MARCH	502	12.1%	213	42.4%	49	9.8%	240	47.8%
APRIL	483	-3.8%	204	42.2%	47	9.7%	232	48.0%
MAY	459	-5.0%	196	42.7%	54	11.8%	209	45.5%
JUNE	453	-1.3%	175	38.6%	57	12.6%	221	48.8%
TOTAL	5,476		2,398	43.8%	624	11.4%	2,454	44.8%

2017/2018	TDOC BACKUP							
JULY	579	5.5%	41	7.1%	353	61.0%	185	32.0%
AUGUST	609	5.2%	50	8.2%	382	62.7%	177	29.1%
SEPTEMBER	619	1.6%	56	9.0%	375	60.6%	188	30.4%
OCTOBER	597	-3.6%	38	6.4%	368	61.6%	191	32.0%
NOVEMBER	646	8.2%	44	6.8%	420	65.0%	182	28.2%
DECEMBER	622	-3.7%	54	8.7%	366	58.8%	202	32.5%
JANUARY	574	-7.7%	58	10.1%	351	61.1%	165	28.7%
FEBRUARY	561	-2.3%	45	8.0%	366	65.2%	150	26.7%
MARCH	624	11.2%	51	8.2%	378	60.6%	195	31.3%
APRIL	625	0.2%	52	8.3%	400	64.0%	173	27.7%
MAY	669	7.0%	47	7.0%	435	65.0%	187	28.0%
JUNE	578	-13.6%	47	8.1%	340	58.8%	191	33.0%
TOTAL	7,303		583	8.0%	4,534	62.1%	2,186	29.9%

2017/2018	LOCALLY SENTENCED							
JULY	157	-8.7%	17	10.8%	68	43.3%	72	45.9%
AUGUST	164	4.5%	21	12.8%	67	40.9%	76	46.3%
SEPTEMBER	156	-4.9%	25	16.0%	60	38.5%	71	45.5%
OCTOBER	156	0.0%	27	17.3%	58	37.2%	71	45.5%
NOVEMBER	162	3.8%	25	15.4%	63	38.9%	74	45.7%
DECEMBER	133	-17.9%	22	16.5%	50	37.6%	61	45.9%
JANUARY	142	6.8%	14	9.9%	56	39.4%	72	50.7%
FEBRUARY	123	-13.4%	16	13.0%	42	34.1%	65	52.8%
MARCH	120	-2.4%	11	9.2%	48	40.0%	61	50.8%
APRIL	146	21.7%	11	7.5%	61	41.8%	74	50.7%
MAY	147	0.7%	14	9.5%	65	44.2%	68	46.3%
JUNE	124	-15.6%	16	12.9%	52	41.9%	56	45.2%
TOTAL	1,730		219	12.7%	690	39.9%	821	47.5%

2017/2018	SYSTEM TOTAL							
JULY	1,166	3.3%	235	20.2%	473	40.6%	458	39.3%
AUGUST	1,187	1.8%	256	21.6%	493	41.5%	438	36.9%
SEPTEMBER	1,218	2.6%	269	22.1%	489	40.1%	460	37.8%
OCTOBER	1,205	-1.1%	250	20.7%	496	41.2%	459	38.1%
NOVEMBER	1,282	6.4%	296	23.1%	538	42.0%	448	34.9%
DECEMBER	1,254	-2.2%	302	24.1%	482	38.4%	470	37.5%
JANUARY	1,135	-9.5%	283	24.9%	443	39.0%	409	36.0%
FEBRUARY	1,132	-0.3%	272	24.0%	448	39.6%	412	36.4%
MARCH	1,246	10.1%	275	22.1%	475	38.1%	496	39.8%
APRIL	1,254	0.6%	267	21.3%	508	40.5%	479	38.2%
MAY	1,275	1.7%	257	20.2%	554	43.5%	464	36.4%
JUNE	1,155	-9.4%	238	20.6%	449	38.9%	468	40.5%
TOTAL	14,509		3,200	22.1%	5,848	40.3%	5,461	37.6%

Release statistics are incomplete because all data are not received by TDOC immediately after inmates are released. Therefore, the numbers for any given month may be different from the previous month's report.

FELON INMATE RELEASES IN TENNESSEE FISCAL YEARS 2004/05 - 2017/18

	TOTAL RELEASES	PERCENT CHANGE	PAROLE	TDOC		PROBATION COM. COR.	PERCENT OF TOTAL	EXPIRATION & OTHERS	PERCENT OF TOTAL
				PERCENT OF TOTAL	PERCENT OF TOTAL				
2004-05	5,804	5.7%	2,767	47.7%	709	12.2%	2,328	40.1%	
2005-06	6,146	5.9%	3,152	51.3%	756	12.3%	2,238	36.4%	
2006-07	6,882	12.0%	3,453	50.2%	892	13.0%	2,537	36.9%	
2007-08	6,636	-3.6%	3,254	49.0%	875	13.2%	2,507	37.8%	
2008-09	6,279	-5.4%	3,261	51.9%	676	10.8%	2,342	37.3%	
2009-10	6,691	6.6%	3,594	53.7%	818	12.2%	2,279	34.1%	
2010-11	5,817	-13.1%	3,064	52.7%	637	11.0%	2,116	36.4%	
2011-12	5,541	-4.7%	2,928	52.8%	568	10.3%	2,045	36.9%	
2012-13	5,782	4.3%	3,054	52.8%	649	11.2%	2,079	36.0%	
2013-14	5,937	2.7%	2,922	49.2%	813	13.7%	2,202	37.1%	
2014-15	5,845	-1.5%	2,757	47.2%	760	13.0%	2,328	39.8%	
2015-16	5,358	-8.3%	2,467	46.0%	638	11.9%	2,253	42.0%	
2016-17	5,019	-6.3%	2,021	40.3%	750	14.9%	2,248	44.8%	
2017-18	5,476	9.1%	2,398	43.8%	624	11.4%	2,454	44.8%	
TDOC BACKUP									
2004-05	5,235	9.3%	485	9.3%	3,349	64.0%	1,401	26.8%	
2005-06	5,913	13.0%	577	9.8%	3,721	62.9%	1,615	27.3%	
2006-07	5,874	-0.7%	594	10.1%	3,804	64.8%	1,476	25.1%	
2007-08	6,177	5.2%	642	10.4%	3,955	64.0%	1,580	25.6%	
2008-09	6,597	6.8%	810	12.3%	4,054	61.5%	1,733	26.3%	
2009-10	6,230	-5.6%	903	14.5%	3,728	59.8%	1,599	25.7%	
2010-11	6,424	3.1%	935	14.6%	3,875	60.3%	1,614	25.1%	
2011-12	7,289	13.5%	1,242	17.0%	4,228	58.0%	1,819	25.0%	
2012-13	8,118	11.4%	1,507	18.6%	4,549	56.0%	2,062	25.4%	
2013-14	7,884	-2.9%	1,339	17.0%	4,499	57.1%	2,046	26.0%	
2014-15	7,361	-6.6%	1,056	14.3%	4,176	56.7%	2,129	28.9%	
2015-16	7,089	-3.7%	963	13.6%	3,778	53.3%	2,348	33.1%	
2016-17	6,337	-10.6%	690	10.9%	3,509	55.4%	2,138	33.7%	
2017-18	7,303	15.2%	583	8.0%	4,534	62.1%	2,186	29.9%	
LOCALLY SENTENCED									
2004-05	3,337	0.8%	272	8.2%	1,681	50.4%	1,384	41.5%	
2005-06	3,544	6.2%	278	7.8%	1,826	51.5%	1,440	40.6%	
2006-07	3,409	-3.8%	338	9.9%	1,679	49.3%	1,392	40.8%	
2007-08	3,488	2.3%	399	11.4%	1,679	48.1%	1,410	40.4%	
2008-09	3,382	-3.0%	369	11.5%	1,592	47.1%	1,401	41.4%	
2009-10	3,040	-10.1%	395	13.0%	1,388	45.7%	1,257	41.3%	
2010-11	3,182	4.7%	578	18.2%	1,396	43.9%	1,208	38.0%	
2011-12	3,285	3.2%	632	19.2%	1,437	43.7%	1,216	37.0%	
2012-13	2,979	-9.3%	638	21.4%	1,149	38.6%	1,192	40.0%	
2013-14	2,644	-11.2%	501	18.9%	1,035	39.1%	1,108	41.9%	
2014-15	2,309	-12.7%	417	18.1%	955	41.4%	937	40.6%	
2015-16	2,235	-3.2%	309	13.8%	910	40.7%	1,016	45.5%	
2016-17	2,042	-8.6%	275	13.5%	815	39.9%	952	46.6%	
2017-18	1,730	-15.3%	219	12.7%	690	39.9%	821	47.5%	
SYSTEM TOTAL									
2004-05	14,376	5.8%	3,524	24.5%	5,799	39.9%	5,113	35.6%	
2005-06	15,603	8.5%	4,007	25.7%	6,303	40.4%	5,293	33.9%	
2006-07	16,165	3.6%	4,385	27.1%	6,375	39.4%	5,405	33.4%	
2007-08	16,301	0.8%	4,295	26.3%	6,509	39.9%	5,497	33.7%	
2008-09	16,258	-0.3%	4,460	27.4%	6,322	38.9%	5,476	33.7%	
2009-10	15,061	-7.3%	4,802	31.9%	5,034	33.4%	5,195	34.5%	

**PROBATION AND COMMUNITY CORRECTION POPULATIONS
FISCAL YEARS 2012/13 - 2018/19**

	Probation and Community Correction Total	Monthly Percent Change	Regular Probation	Percent of Total	Intensive Probation	Percent of Total	Community Correction	Percent of Total
FY AVERAGE								
2012/2013	65,348		56,791	86.9%	845	1.3%	7,712	11.8%
2013/2014	66,093		57,549	86.9%	722	1.3%	7,821	11.8%
2014/2015	66,488		57,862	87.0%	645	1.0%	7,981	12.0%
2015/2016	66,167		57,700	87.2%	542	0.8%	7,925	12.0%
2016/2017	66,356		57,861	87.2%	573	0.9%	7,922	11.9%

2017/2018								
July	66,148	-0.3%	57,630	87.1%	652	1.0%	7,866	11.9%
August	66,065	-0.1%	57,565	87.1%	688	1.0%	7,812	11.8%
September	65,963	-0.2%	57,479	87.1%	715	1.1%	7,769	11.8%
October	65,795	-0.3%	57,425	87.3%	690	1.0%	7,680	11.7%
November	65,814	0.0%	57,422	87.2%	734	1.1%	7,658	11.6%
December	65,605	-0.3%	57,208	87.2%	770	1.2%	7,627	11.6%
January	65,558	-0.1%	57,115	87.1%	805	1.2%	7,638	11.7%
February	65,536	0.0%	57,049	87.0%	814	1.2%	7,673	11.7%
March	65,334	-0.3%	56,809	87.0%	894	1.4%	7,631	11.7%
April	65,250	-0.1%	56,738	87.0%	878	1.3%	7,634	11.7%
May	65,471	0.3%	56,891	86.9%	933	1.4%	7,647	11.7%
June	65,502	0.0%	56,754	86.6%	1,032	1.6%	7,716	11.8%
FY Average	65,670	-0.1%	57,174	87.1%	800	1.2%	7,696	11.7%

2018/2019								
July	65,512	0.0%	56,758	86.6%	1,053	1.6%	7,701	11.8%
August	65,744	0.4%	56,877	86.5%	1,099	1.7%	7,768	11.8%
September	65,784	0.1%	56,793	86.3%	1,121	1.7%	7,870	12.0%
October	65,677	-0.2%	56,646	86.2%	1,134	1.7%	7,897	12.0%
November	65,811	0.2%	56,703	86.2%	1,183	1.8%	7,925	12.0%
December	65,917	0.2%	56,704	86.0%	1,228	1.9%	7,985	12.1%
January	66,107	0.3%	56,769	85.9%	1,266	1.9%	8,072	12.2%
February	66,330	0.3%	56,823	85.7%	1,399	2.1%	8,108	12.2%
March	66,253	-0.1%	56,699	85.6%	1,422	2.1%	8,132	12.3%
April	66,295	0.1%	56,512	85.2%	1,621	2.4%	8,162	12.3%
May	66,439	0.2%	56,633	85.2%	1,756	2.6%	8,050	12.1%
June	66,432	0.0%	56,725	85.4%	1,740	2.6%	7,967	12.0%
FY Average	66,025	0.1%	56,720	85.9%	1,335	2.0%	7,970	12.1%

**Beginning in April 2010, Community Supervision figures will be reported as of the fifth working day of the following month (e.g. April 2010 figures are according to May 7, 2010 data).*

Population figures on each year-end summary line are monthly averages.

**PROBATION AND COMMUNITY CORRECTION POPULATIONS AND
AVERAGES FISCAL YEARS 2003/04 - 2017/18**

PROBATION AND COMMUNITY CORRECTION POPULATION TOTALS AT FISCAL YEAR END (JUNE 30) FY 2004/05 - FY 2017/18

	TOTAL COM. CORR. POP	TOTAL CHANGE	REGULAR PROBATION	PERCENT OF TOTAL	INTENSIVE PROBATION	PERCENT OF TOTAL	COMM. CORR.	PERCENT OF TOTAL
2003-04	44,476	-4.8%	41,950	94.3%	965	2.2%	6,069	13.6%
2004-05	48,984	10.1%	41,950	85.6%	965	2.0%	6,069	12.4%
2005-06	49,126	0.3%	41,763	85.0%	967	2.0%	6,396	13.0%
2006-07	52,345	6.6%	44,837	85.7%	904	1.7%	6,604	12.6%
2007-08	54,677	4.5%	46,853	85.7%	997	1.8%	6,827	12.5%
2008-09	56,779	3.8%	48,924	86.2%	930	1.6%	6,925	12.2%
2009-10	59,180	4.2%	50,953	86.1%	957	1.6%	7,270	12.3%
2010-11	62,097	4.9%	53,573	86.3%	934	1.5%	7,590	12.2%
2011-12	64,431	3.8%	55,985	86.9%	865	1.3%	7,581	11.8%
2012-13	65,713	2.0%	57,234	87.1%	788	1.2%	7,691	11.7%
2013-14	66,277	0.9%	57,769	87.2%	664	1.0%	7,844	11.8%
2014-15	66,280	0.0%	57,770	87.2%	665	1.0%	7,845	11.8%
2015-16	66,122	-0.2%	57,743	87.3%	509	0.8%	7,870	11.9%
2016-17	66,331	0.3%	57,666	86.9%	759	1.1%	7,906	11.9%
2017-18	65,502	-1.2%	56,754	86.6%	1,032	1.6%	7,716	11.8%

PROBATION AND COMMUNITY CORRECTION POPULATION AVERAGES FY 2004/05 - FY 2017/18

	TOTAL COM. CORR. POP	ANNUAL CHANGE	REGULAR PROBATION	PERCENT OF TOTAL	INTENSIVE PROBATION	PERCENT OF TOTAL	COMM. CORR.	PERCENT OF TOTAL
2003-04	43,417	3.3%	39,173	90.2%	1,010	2.3%	5,957	13.7%
2004-05	46,140	6.3%	39,173	84.9%	1,010	2.2%	5,957	12.9%
2005-06	47,530	3.0%	40,308	84.8%	988	2.1%	6,234	13.1%
2006-07	51,047	7.4%	43,605	85.4%	931	1.8%	6,511	12.8%
2007-08	53,502	4.8%	45,792	85.6%	975	1.8%	6,735	12.6%
2008-09	55,829	4.3%	47,972	85.9%	972	1.7%	6,885	12.3%
2009-10	58,072	4.0%	50,059	86.2%	943	1.6%	7,070	12.2%
2010-11	60,684	4.5%	52,151	85.9%	980	1.6%	7,553	12.4%
2011-12	63,607	4.8%	55,188	86.8%	908	1.4%	7,511	11.8%
2012-13	65,348	2.7%	56,791	86.9%	845	1.3%	7,712	11.8%
2013-14	66,093	1.1%	57,549	87.1%	722	1.1%	7,822	11.8%
2014-15	66,488	0.6%	57,862	87.0%	645	1.0%	7,981	12.0%
2015-16	66,167	-0.5%	57,700	87.2%	542	0.8%	7,925	12.0%
2016-17	66,356	0.3%	57,861	87.2%	573	0.9%	7,922	11.9%
2017-18	65,670	-1.0%	57,174	87.1%	800	1.2%	7,696	11.7%

**PAROLE GRANT RATES IN TENNESSEE
FISCAL YEARS 2009/10 - 2018/19**

	TOTAL HEARINGS	PAROLE GRANTED	% OF TOTAL	PAROLE DENIED	% OF TOTAL	PAROLE DENIED/WAIVED	% OF TOTAL	CONT.	% OF TOTAL	CONT./WAIVED	% OF TOTAL
FY TOTALS											
2009/2010	13,986	5214	37.3%	6928	49.5%	663	4.7%	832	5.9%	349	2.5%
2010/2011	14,231	4754	33.4%	7407	52.0%	841	5.9%	791	5.6%	438	3.1%
2011/2012	15,148	6127	40.4%	6994	46.2%	736	4.9%	813	5.4%	478	3.2%
2012/2013	14,452	5627	38.9%	6870	47.5%	640	4.4%	797	5.5%	518	3.6%
2013/2014	13,721	5009	36.5%	6824	49.7%	665	4.8%	741	5.4%	482	3.5%
2014/2015	13,809	4532	32.8%	7386	53.5%	640	4.6%	768	5.6%	483	3.5%
2015/2016	13,387	3821	28.5%	7596	56.7%	663	5.0%	762	5.7%	545	4.1%
2016/2017	13,776	3197	23.2%	8446	61.3%	632	4.6%	920	6.7%	581	4.2%
2017/2018											
JULY	1,276	294	23.0%	786	61.6%	63	4.9%	90	7.1%	43	3.4%
AUGUST	1,245	337	27.1%	687	55.2%	65	5.2%	97	7.8%	59	4.7%
SEPTEMBER	1,217	273	22.4%	747	61.4%	50	4.1%	100	8.2%	47	3.9%
OCTOBER	1,347	339	25.2%	803	59.6%	63	4.7%	91	6.8%	51	3.8%
NOVEMBER	1,045	286	27.4%	581	55.6%	57	5.5%	73	7.0%	48	4.6%
DECEMBER	1,028	254	24.7%	623	60.6%	38	3.7%	90	8.8%	23	2.2%
JANUARY	1,447	321	22.2%	829	57.3%	78	5.4%	146	10.1%	73	5.0%
FEBRUARY	1,149	260	22.6%	705	61.4%	55	4.8%	80	7.0%	49	4.3%
MARCH	953	273	28.6%	560	58.8%	47	4.9%	50	5.2%	23	2.4%
APRIL	1,154	250	21.7%	682	59.1%	71	6.2%	94	8.1%	57	4.9%
MAY	1,086	217	20.0%	671	61.8%	80	7.4%	75	6.9%	43	4.0%
JUNE	1,107	231	20.9%	709	64.0%	56	5.1%	64	5.8%	47	4.2%
TOTAL	14,054	3,335	23.7%	8,383	59.6%	723	5.1%	1,050	7.5%	563	4.0%
2018/2019											
JULY	1,258	237	18.8%	810	64.4%	77	6.1%	83	6.6%	51	4.1%
AUGUST	1,527	287	18.8%	979	64.1%	100	6.5%	93	6.1%	68	4.5%
SEPTEMBER	1,232	248	20.1%	785	63.7%	59	4.8%	80	6.5%	60	4.9%
OCTOBER	1,452	280	19.3%	933	64.3%	72	5.0%	99	6.8%	68	4.7%
NOVEMBER	876	190	21.7%	555	63.4%	44	5.0%	57	6.5%	30	3.4%
DECEMBER	1,038	178	17.1%	680	65.5%	62	6.0%	70	6.7%	48	4.6%
JANUARY	1,149	258	22.5%	692	60.2%	72	6.3%	72	6.3%	55	4.8%
FEBRUARY	1,251	301	24.1%	687	54.9%	93	7.4%	108	8.6%	62	5.0%
MARCH	1,022	291	28.5%	555	54.3%	49	4.8%	83	8.1%	44	4.3%
APRIL	1,004	354	35.3%	479	47.7%	54	5.4%	78	7.8%	39	3.9%
MAY	1,282	439	34.2%	599	46.7%	62	4.8%	98	7.6%	84	6.6%
JUNE	903	356	39.4%	355	39.3%	14	1.6%	109	12.1%	69	7.6%
TOTAL	13,994	3,419	24.4%	8,109	57.9%	758	5.4%	1,030	7.4%	678	4.8%
2017/2018											

Parole statistics are incomplete because all data are not received by TDOC immediately after inmates are paroled. Therefore, the numbers for any given month may be different from the previous month's report.

**PAROLE POPULATIONS
FISCAL YEARS 2012/13 - 2018/19**

	AVERAGE MONTHLY POPULATION	ANNUAL CHANGE	PERCENT CHANGE
2012/2013	13,324	576	4.5%
2013/2014	13,738	414	3.1%
2014/2015	13,664	-74	-0.5%
2015/2016	13,025	-639	-4.7%

2016/2017	ACTIVE POPULATION	MONTHLY CHANGE	PERCENT CHANGE
JULY	12,503	-191	-9.0%
AUGUST	12,375	-128	-1.0%
SEPTEMBER	12,279	-96	-0.8%
OCTOBER	12,222	-57	-0.5%
NOVEMBER	12,150	-72	-0.6%
DECEMBER	12,114	-36	-0.3%
JANUARY	11,970	-144	-1.2%
FEBRUARY	11,930	-40	-0.3%
MARCH	11,910	-20	-0.2%
APRIL	11,846	-64	-0.5%
MAY	11,751	-95	-0.8%
JUNE	11,740	-11	-0.1%

AVERAGE 12,066

2017/2018	ACTIVE POPULATION	MONTHLY CHANGE	PERCENT CHANGE
JULY	11,553	-187	-1.6%
AUGUST	11,525	-28	-0.2%
SEPTEMBER	11,435	-90	-0.8%
OCTOBER	11,374	-61	-0.5%
NOVEMBER	11,322	-52	-0.5%
DECEMBER	11,355	33	0.3%
JANUARY	11,361	6	0.1%
FEBRUARY	11,412	51	0.4%
MARCH	11,405	-7	-0.1%
APRIL	11,381	-24	-0.2%
MAY	11,315	-66	-0.6%
JUNE	11,231	-84	-0.7%

AVERAGE 11,389

2018/2019	ACTIVE POPULATION	MONTHLY CHANGE	PERCENT CHANGE
JULY	11,122	-109	-1.0%
AUGUST	11,041	-81	-0.7%
SEPTEMBER	10,980	-61	-0.6%
OCTOBER	10,884	-96	-0.9%
NOVEMBER	10,914	30	0.3%
DECEMBER	10,851	-63	-0.6%
JANUARY	10,688	-163	-1.5%
FEBRUARY	10,609	-79	-0.7%
MARCH	10,550	-59	-0.6%
APRIL	10,555	5	0.0%
MAY	10,511	-44	-0.4%
JUNE	10,495	-16	-0.2%

AVERAGE 10,767

**PAROLE ADMISSIONS /
RELEASES FISCAL YEARS
2012/13 - 2018/19**

	TOTAL ANNUAL				ADMISSIONS to RELEASES RATIO*
	PAROLE ADMISSIONS	PERCENT CHANGE	PAROLE RELEASES	PERCENT CHANGE	
2012/2013	6,034		4,904		1.23
2013/2014	5,553	-8.0%	5,116	4.3%	1.09
2014/2015	4,971	-10.5%	4,925	-3.7%	1.01
2015/2016	4,403	-11.4%	4,847	-1.6%	0.91
2016/2017	3,572	-18.9%	4,344	-10.4%	0.82

	PAROLE ADMISSIONS	PERCENT CHANGE	PAROLE RELEASES	PERCENT CHANGE	ADMISSIONS to RELEASES RATIO*
2017/2018					
JULY	272	-9.0%	350	5.7%	0.78
AUGUST	315	15.8%	404	15.4%	0.78
SEPTEMBER	315	0.0%	352	-12.9%	0.89
OCTOBER	330	4.8%	398	13.1%	0.83
NOVEMBER	343	3.9%	348	-12.6%	0.99
DECEMBER	352	2.6%	279	-19.8%	1.26
JANUARY	336	-4.5%	323	15.8%	1.04
FEBRUARY	316	-6.0%	326	0.9%	0.97
MARCH	330	4.4%	292	-10.4%	1.13
APRIL	320	-3.0%	321	9.9%	1.00
MAY	317	-0.9%	340	5.9%	0.93
JUNE	287	-9.5%	331	-2.6%	0.87
TOTAL	3,833		4,064		0.94

2018/2019					
JULY	260	-9.4%	301	-9.1%	0.86
AUGUST	307	18.1%	381	26.6%	0.81
SEPTEMBER	230	-25.1%	318	-16.5%	0.72
OCTOBER	295	28.3%	313	-1.6%	0.94
NOVEMBER	296	0.3%	297	-5.1%	1.00
DECEMBER	264	-10.8%	288	-3.0%	0.92
JANUARY	208	-21.2%	322	11.8%	0.65
FEBRUARY	252	21.2%	279	-13.4%	0.90
MARCH	287	13.9%	294	5.4%	0.98
APRIL	281	-2.1%	271	-7.8%	1.04
MAY	269	-4.3%	265	-2.2%	1.02
JUNE	257	-4.5%	219	-17.4%	1.17
TOTAL	3,206		3,548		0.90

*Proportion of monthly admissions to monthly releases

**PROBATION ADMISSIONS /
RELEASES FISCAL
YEARS 2015/16 - 2018/19**

	TOTAL ANNUAL				ADMISSIONS to RELEASES RATIO*
	PROBATION ADMISSIONS	PERCENT CHANGE	PROBATION RELEASES	PERCENT CHANGE	
2015/2016	18,900	n/a	18,688	n/a	1:01
2016/2017	19,035	0.7%	18,504	-1.0%	2.01

	PROBATION ADMISSIONS	PERCENT CHANGE	PROBATION RELEASES	PERCENT CHANGE	ADMISSIONS to RELEASES RATIO*
2017/2018					
JULY	1,469	-1.3%	1,531	-0.8%	0.96
AUGUST	1,735	18.1%	1,771	15.7%	0.98
SEPTEMBER	1,568	-9.6%	1,497	-15.5%	1.05
OCTOBER	1,551	-1.1%	1,528	2.1%	1.02
NOVEMBER	1,726	11.3%	1,507	-1.4%	1.15
DECEMBER	1,401	-18.8%	1,357	-10.0%	1.03
JANUARY	1,644	17.3%	1,643	21.1%	1.00
FEBRUARY	1,604	-2.4%	1,577	-4.0%	1.02
MARCH	1,683	4.9%	1,699	7.7%	0.99
APRIL	1,669	-0.8%	1,661	-2.2%	1.00
MAY	1,904	14.1%	1,714	3.2%	1.11
JUNE	1,567	-17.7%	1,405	-18.0%	1.12
TOTAL	19,521		18,890		1.03

2018/2019					
JULY	1,635	4.3%	1,627	15.8%	1.00
AUGUST	1,839	12.5%	1,687	3.7%	1.09
SEPTEMBER	1,622	-11.8%	1,585	-6.0%	1.02
OCTOBER	1,577	-2.8%	1,622	2.3%	0.97
NOVEMBER	1,693	7.4%	1,656	2.1%	1.02
DECEMBER	1,332	-21.3%	1,227	-25.9%	1.09
JANUARY	1,711	28.5%	1,534	25.0%	1.12
FEBRUARY	1,448	-15.4%	1,463	-4.6%	0.99
MARCH	1,564	8.0%	1,576	7.7%	0.99
APRIL	1,537	-1.7%	1,583	0.4%	0.97
MAY	1,704	10.9%	1,536	-3.0%	1.11
JUNE	1,337	-21.5%	1,162	-24.3%	1.15
TOTAL	18,999		18,258		1.04

*Proportion of monthly admissions to monthly releases

**COMMUNITY CORRECTIONS ADMISSIONS / RELEASES
FISCAL YEARS 2015/16 - 2018/19**

	TOTAL ANNUAL				ADMISSIONS to RELEASES RATIO*
	COMM CORR ADMISSIONS	PERCENT CHANGE	COMM CORR RELEASES	PERCENT CHANGE	
2015/2016	4,055	n/a	2,603	n/a	1.01
2016/2017	4,287	5.7%	2,754	5.8%	2.01

	TOTAL ANNUAL				ADMISSIONS to RELEASES RATIO*
	COMM CORR ADMISSIONS	PERCENT CHANGE	COMM CORR RELEASES	PERCENT CHANGE	
2017/2018					
JULY	375	-74.8%	207	-86.6%	1.81
AUGUST	410	9.3%	255	23.2%	1.61
SEPTEMBER	360	-12.2%	226	-11.4%	1.59
OCTOBER	328	-8.9%	227	0.4%	1.44
NOVEMBER	358	9.1%	236	4.0%	1.52
DECEMBER	297	-17.0%	194	-17.8%	1.53
JANUARY	335	12.8%	175	-9.8%	1.91
FEBRUARY	343	2.4%	200	14.3%	1.72
MARCH	336	-2.0%	220	10.0%	1.53
APRIL	369	9.8%	223	1.4%	1.65
MAY	357	-3.3%	223	0.0%	1.60
JUNE	324	-9.2%	193	-13.5%	1.68
TOTAL	4,192		2,579		1.63

2018/2019					
JULY	370	14.2%	221	14.5%	1.67
AUGUST	412	11.4%	222	0.5%	1.86
SEPTEMBER	378	-8.3%	175	-21.2%	2.16
OCTOBER	355	-6.1%	203	16.0%	1.75
NOVEMBER	318	-10.4%	176	-13.3%	1.81
DECEMBER	331	4.1%	165	-6.3%	2.01
JANUARY	341	3.0%	165	0.0%	2.07
FEBRUARY	321	-5.9%	184	11.5%	1.74
MARCH	314	-2.2%	201	9.2%	1.56
APRIL	352	12.1%	220	9.5%	1.60
MAY	293	-16.8%	202	-8.2%	1.45
JUNE	217	-25.9%	165	-18.3%	1.32
TOTAL	4,002		2,299		1.74

**Proportion of monthly admissions to monthly releases*

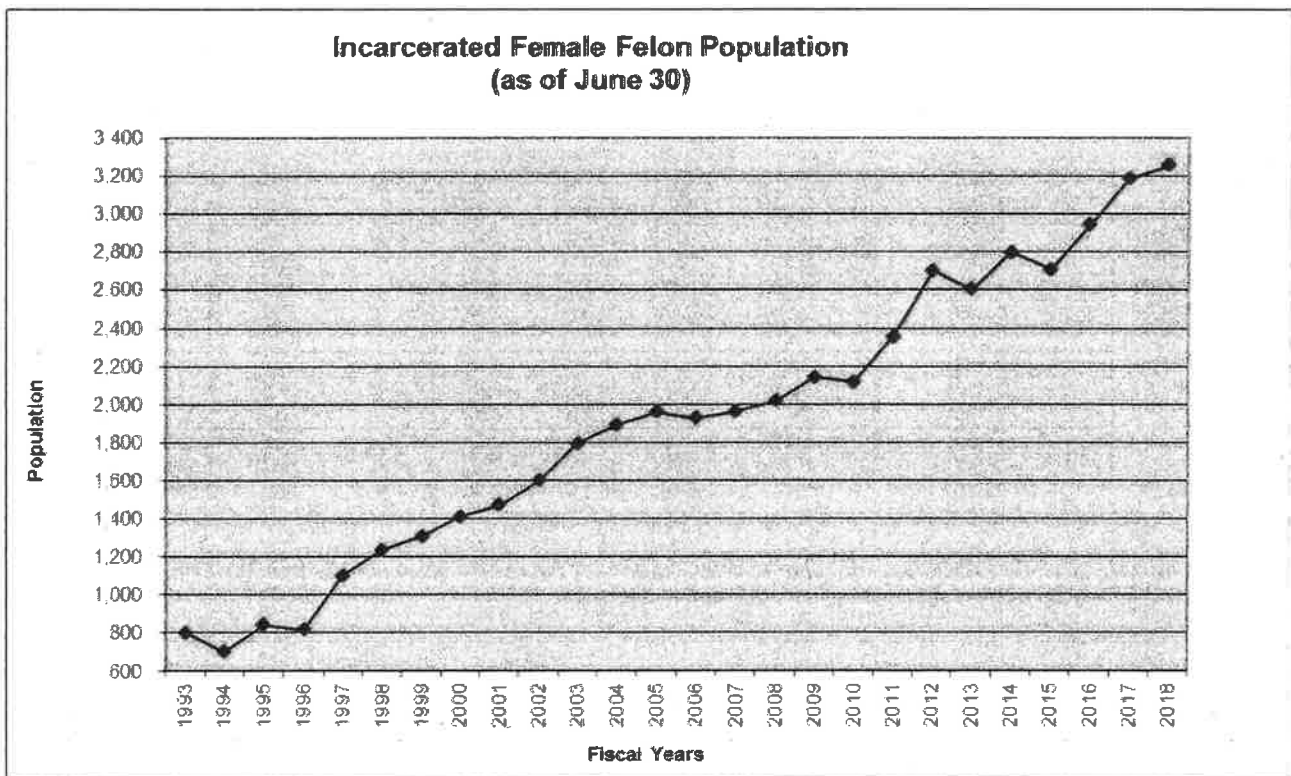
INCARCERATED FEMALE FELON POPULATIONS
as of June 30, 2019

	Total Felon Population (A+B+C)	Monthly Change	Monthly Percent Change	TDOC Facilities (A)	Percent of Total	TDOC Backup (B)	Percent of Total	Locally Sentenced (C)	Percent of Total	Local Jail Total (B+C)
FY AVG.										
2009/2010	2,116			1,182	55.9%	407	19.2%	527	24.9%	934
2010/2011	2,353			1,189	50.5%	549	23.3%	615	26.1%	1,164
2011/2012	2,565			1,213	47.3%	719	28.0%	633	24.7%	1,352
2012/2013	2,656			1,204	45.3%	770	29.0%	682	25.7%	1,452
2013/2014	2,698			1,376	51.0%	712	26.4%	610	22.6%	1,322
2014/2015	2,788			1,480	53.1%	757	27.2%	551	19.8%	1,308
2015/2016	2,827			1,482	52.4%	821	29.0%	524	18.5%	1,345
2016/2017										
JULY	2,915	-26	-0.9%	1,527	52.4%	873	29.9%	515	17.7%	1,388
AUGUST	2,964	49	1.7%	1,573	53.1%	872	29.4%	519	17.5%	1,391
SEPTEMBER	2,971	7	0.2%	1,783	60.0%	684	23.0%	504	17.0%	1,188
OCTOBER	2,986	15	0.5%	1,741	58.3%	728	24.4%	517	17.3%	1,245
NOVEMBER	2,988	2	0.1%	1,763	59.0%	722	24.2%	503	16.8%	1,225
DECEMBER	2,953	-35	-1.2%	1,785	60.4%	695	23.5%	473	16.0%	1,168
JANUARY	3,004	51	1.7%	1,790	59.6%	729	24.3%	485	16.1%	1,214
FEBRUARY	3,046	42	1.4%	1,782	58.5%	789	25.9%	475	15.6%	1,264
MARCH	3,077	31	1.0%	1,839	59.8%	728	23.7%	510	16.6%	1,238
APRIL	3,139	62	2.0%	1,848	58.9%	740	23.6%	551	17.6%	1,291
MAY	3,143	4	0.1%	1,842	58.6%	781	24.8%	520	16.5%	1,301
JUNE	3,186	43	1.4%	1,862	58.4%	825	25.9%	499	15.7%	1,324
FY Average	3,031			1,761	58.1%	764	25.2%	506	16.7%	1,270
2017/2018										
JULY	3,082	-104	-3.3%	1,769	57.4%	851	27.6%	462	15.0%	1,313
AUGUST	3,236	154	5.0%	1,887	58.3%	865	26.7%	484	15.0%	1,349
SEPTEMBER	3,280	44	1.4%	1,935	59.0%	825	25.2%	520	15.9%	1,345
OCTOBER	3,237	-43	-1.3%	1,934	59.7%	811	25.1%	492	15.2%	1,303
NOVEMBER	3,325	88	2.7%	1,944	58.5%	891	26.8%	490	14.7%	1,381
DECEMBER	3,244	-81	-2.4%	1,934	59.6%	855	26.4%	455	14.0%	1,310
JANUARY	3,273	29	0.9%	1,931	59.0%	862	26.3%	480	14.7%	1,342
FEBRUARY	3,346	73	2.2%	1,939	57.9%	884	26.4%	523	15.6%	1,407
MARCH	3,307	-39	-1.2%	1,953	59.1%	802	24.3%	552	16.7%	1,354
APRIL	3,224	-83	-2.5%	1,901	59.0%	817	25.3%	506	15.7%	1,323
MAY	3,273	49	1.5%	1,938	59.2%	808	24.7%	527	16.1%	1,335
JUNE	3,256	-17	-0.5%	2,007	61.6%	733	22.5%	516	15.8%	1,249
FY Average	3,257			1,923	59.0%	834	25.6%	501	15.4%	1,334
2018/2019										
JULY	3,303	47	1.4%	2,007	60.8%	759	23.0%	537	16.3%	1,296
AUGUST	3,304	1	0.0%	2,041	61.8%	723	21.9%	540	16.3%	1,263
SEPTEMBER	3,340	36	1.1%	2,017	60.4%	762	22.8%	561	16.8%	1,323
OCTOBER	3,350	10	0.3%	2,030	60.6%	752	22.4%	568	17.0%	1,320
NOVEMBER	3,339	-11	-0.3%	2,023	60.6%	758	22.7%	558	16.7%	1,316
DECEMBER	3,309	-30	-0.9%	2,013	60.8%	764	23.1%	532	16.1%	1,296
JANUARY	3,343	34	1.0%	1,982	59.3%	835	25.0%	526	15.7%	1,361
FEBRUARY	3,402	59	1.8%	2,008	59.0%	806	23.7%	588	17.3%	1,394
MARCH	3,416	14	0.4%	2,025	59.3%	826	24.2%	565	16.5%	1,391
APRIL	3,386	-30	-0.9%	2,026	59.8%	820	24.2%	540	15.9%	1,360
MAY	3,365	-21	-0.6%	2,013	59.8%	802	23.8%	550	16.3%	1,352
JUNE	3,343	-22	-0.7%	1,994	59.6%	782	23.4%	567	17.0%	1,349
FY Average	3,350			2,015	60.1%	782	23.4%	553	16.5%	1,335

Beginning April 2010, the "TDOC Backup" and "Locally Sentenced" figures are taken directly from the Female Jail Report. Population figures on each year summary line are monthly averages.

**SYSTEMWIDE
 INCARCERATED FEMALE FELON POPULATION TOTALS AT FISCAL YEAR-END (JUNE 30)
 FY 1992/93- 2017/19**

	Total Female Felon Population
6/30/1993	798
6/30/1994	697
6/30/1995	840
6/30/1996	815
6/30/1997	1,100
6/30/1998	1,236
6/30/1999	1,307
6/30/2000	1,408
6/30/2001	1,471
6/30/2002	1,598
6/30/2003	1,796
6/30/2004	1,892
6/30/2005	1,958
6/30/2006	1,926
6/30/2007	1,963
6/30/2008	2,017
6/30/2009	2,141
6/30/2010	2,116
6/30/2011	2,353
6/30/2012	2,701
6/30/2013	2,600
6/30/2014	2,798
6/30/2015	2,708
6/30/2016	2,941
6/30/2017	3,186
6/30/2018	3,256
6/30/2019	3,343



**FEMALE FELON ADMISSIONS IN TENNESSEE FISCAL
YEAR 2018/2019**

TOTAL ADMISSIONS	PERCENT CHANGE	NEW COMMITS	PERCENT OF TOTAL	VIOLATORS RETURNED	PERCENT OF TOTAL	ESCAPEES & OTHERS	PERCENT OF TOTAL
------------------	----------------	-------------	------------------	--------------------	------------------	-------------------	------------------

2018/2019

TDOC*

JULY	168	17.5%	98	58.3%	69	41.1%	1	0.6%
AUGUST	152	-9.5%	82	53.9%	68	44.7%	2	1.3%
SEPTEMBER	174	14.5%	102	58.6%	71	40.8%	1	0.6%
OCTOBER	161	-7.5%	100	62.1%	61	37.9%	0	0.0%
NOVEMBER	153	-5.0%	87	56.9%	65	42.5%	1	0.7%
DECEMBER	127	-17.0%	63	49.6%	64	50.4%	0	0.0%
JANUARY	187	47.2%	110	58.8%	77	41.2%	0	0.0%
FEBRUARY	153	-18.2%	83	54.2%	70	45.8%	0	0.0%
MARCH	164	7.2%	91	55.5%	73	44.5%	0	0.0%
APRIL	158	-3.7%	84	53.2%	72	45.6%	2	1.3%
MAY	147	-7.0%	88	59.9%	59	40.1%	0	0.0%
JUNE	63	-57.1%	28	44.4%	35	55.6%	0	0.0%
TOTAL	1,807		1,016	56.2%	784	43.4%	7	0.4%

2018/2019

LOCALLY SENTENCED

JULY	18	-5.3%	12	66.7%	6	33.3%	0	0.0%
AUGUST	19	5.6%	11	57.9%	8	42.1%	0	0.0%
SEPTEMBER	15	-21.1%	8	53.3%	7	46.7%	0	0.0%
OCTOBER	20	33.3%	17	85.0%	3	15.0%	0	0.0%
NOVEMBER	20	0.0%	12	60.0%	8	40.0%	0	0.0%
DECEMBER	16	-20.0%	8	50.0%	7	43.8%	1	6.3%
JANUARY	13	-18.8%	9	69.2%	4	30.8%	0	0.0%
FEBRUARY	24	84.6%	17	70.8%	7	29.2%	0	0.0%
MARCH	8	-66.7%	6	75.0%	2	25.0%	0	0.0%
APRIL	13	62.5%	8	61.5%	5	38.5%	0	0.0%
MAY	10	-23.1%	6	60.0%	4	40.0%	0	0.0%
JUNE	8	-20.0%	7	87.5%	1	12.5%	0	0.0%
TOTAL	184		121	65.8%	62	33.7%	1	0.5%

2018/2019

SYSTEM TOTAL

JULY	186	14.8%	110	59.1%	75	40.3%	1	0.5%
AUGUST	171	-8.1%	93	54.4%	76	44.4%	2	1.2%
SEPTEMBER	189	10.5%	110	58.2%	78	41.3%	1	0.5%
OCTOBER	181	-4.2%	117	64.6%	64	35.4%	0	0.0%
NOVEMBER	173	-4.4%	99	57.2%	73	42.2%	1	0.6%
DECEMBER	143	-17.3%	71	49.7%	71	49.7%	1	0.7%
JANUARY	200	39.9%	119	59.5%	81	40.5%	0	0.0%
FEBRUARY	177	-11.5%	100	56.5%	77	43.5%	0	0.0%
MARCH	172	-2.8%	97	56.4%	75	43.6%	0	0.0%
APRIL	171	-0.6%	92	53.8%	77	45.0%	2	1.2%
MAY	157	-8.2%	94	59.9%	63	40.1%	0	0.0%
JUNE	71	-54.8%	35	49.3%	36	50.7%	0	0.0%
TOTAL	1,991		1,137	57.1%	846	42.5%	8	0.4%

Admission statistics are incomplete because all data are not received by TDOC immediately after sentencing. In some cases information is not received until several months after sentencing. Therefore, the numbers for any given month may be different from the previous month's report.

**The "TDOC" category of admissions is a combination of convicted felons housed in DOC facilities and jail backup.*

**FEMALE FELON ADMISSIONS IN TENNESSEE FISCAL
YEARS 2012/2013- 2017/2018**

	TOTAL ADMISSIONS	PERCENT CHANGE	NEW COMMITTS	PERCENT OF TOTAL	VIOLATORS RETURNED	PERCENT OF TOTAL	ESCAPEES & OTHERS	PERCENT OF TOTAL
FY12/13	2,351	1.2%	1,429	60.8%	911	38.7%	11	0.5%
FY13/14	2,376	1.1%	1,388	58.4%	978	41.2%	10	0.4%
FY14/15	2,228	-6.2%	1,291	57.9%	917	41.2%	20	0.9%
FY15/16	2,185	-1.9%	1,257	57.5%	912	41.7%	16	0.7%
FY16/17	2,209	1.1%	1,318	59.7%	884	40.0%	7	0.3%

2017/2018

TDOC*

JULY	152	-6.7%	91	59.9%	60	39.5%	1	0.7%
AUGUST	185	21.7%	109	58.9%	74	40.0%	2	1.1%
SEPTEMBER	177	-4.3%	107	60.5%	70	39.5%	0	0.0%
OCTOBER	182	2.8%	101	55.5%	78	42.9%	3	1.6%
NOVEMBER	175	-3.8%	103	58.9%	72	41.1%	0	0.0%
DECEMBER	137	-21.7%	90	65.7%	46	33.6%	1	0.7%
JANUARY	152	10.9%	98	64.5%	54	35.5%	0	0.0%
FEBRUARY	151	-0.7%	71	47.0%	80	53.0%	0	0.0%
MARCH	162	7.3%	100	61.7%	62	38.3%	0	0.0%
APRIL	172	6.2%	105	61.0%	66	38.4%	1	0.6%
MAY	178	3.5%	105	59.0%	73	41.0%	0	0.0%
JUNE	143	-19.7%	85	59.4%	58	40.6%	0	0.0%
TOTAL	1,966		1,165	59.3%	793	40.3%	8	0.4%

2017/2018

LOCALLY SENTENCED

JULY	15	0.0%	6	40.0%	9	60.0%	0	0.0%
AUGUST	21	40.0%	14	66.7%	7	33.3%	0	0.0%
SEPTEMBER	16	-23.8%	11	68.8%	5	31.3%	0	0.0%
OCTOBER	13	-18.8%	8	61.5%	5	38.5%	0	0.0%
NOVEMBER	21	61.5%	10	47.6%	11	52.4%	0	0.0%
DECEMBER	12	-42.9%	8	66.7%	4	33.3%	0	0.0%
JANUARY	18	50.0%	11	61.1%	7	38.9%	0	0.0%
FEBRUARY	22	22.2%	9	40.9%	13	59.1%	0	0.0%
MARCH	25	13.6%	14	56.0%	11	44.0%	0	0.0%
APRIL	13	-48.0%	10	76.9%	3	23.1%	0	0.0%
MAY	26	100.0%	17	65.4%	9	34.6%	0	0.0%
JUNE	19	-26.9%	10	52.6%	9	47.4%	0	0.0%
TOTAL	221		128	57.9%	93	42.1%	0	0.0%

2017/2018

SYSTEM TOTAL

JULY	167	-6.2%	97	58.1%	69	41.3%	1	0.6%
AUGUST	206	23.4%	123	59.7%	81	39.3%	2	1.0%
SEPTEMBER	193	-6.3%	118	61.1%	75	38.9%	0	0.0%
OCTOBER	195	1.0%	109	55.9%	83	42.6%	3	1.5%
NOVEMBER	196	0.5%	113	57.7%	83	42.3%	0	0.0%
DECEMBER	149	-24.0%	98	65.8%	50	33.6%	1	0.7%
JANUARY	170	14.1%	109	64.1%	61	35.9%	0	0.0%
FEBRUARY	173	1.8%	80	46.2%	93	53.8%	0	0.0%
MARCH	187	8.1%	114	61.0%	73	39.0%	0	0.0%
APRIL	185	-1.1%	115	62.2%	69	37.3%	1	0.5%
MAY	204	10.3%	122	59.8%	82	40.2%	0	0.0%
JUNE	162	-20.6%	95	58.6%	67	41.4%	0	0.0%
TOTAL	2,187		1,293	59.1%	886	40.5%	8	0.4%

Admission statistics are incomplete because all data are not received by TDOC immediately after sentencing. In some cases information is not received until several months after sentencing. Therefore, the numbers for any given month may be different from the previous month's report.

**The "TDOC" category of admissions is a combination of convicted felons housed in DOC facilities and jail backup.*

FEMALE INMATE FELON RELEASES IN TENNESSEE FISCAL YEAR 2018/2019

	TOTAL RELEASES	PERCENT CHANGE	PAROLE	PERCENT OF TOTAL	PROBATION COMM. CORR.	PERCENT OF TOTAL	EXPIRATION & OTHERS	PERCENT OF TOTAL
2018/2019 TDOC								
JULY	56	0.0%	21	37.5%	4	7.1%	31	55.4%
AUGUST	48	-14.3%	22	45.8%	5	10.4%	21	43.8%
SEPTEMBER	59	22.9%	18	30.5%	7	11.9%	34	57.6%
OCTOBER	72	22.0%	36	50.0%	7	9.7%	29	40.3%
NOVEMBER	61	-15.3%	25	41.0%	4	6.6%	32	52.5%
DECEMBER	64	4.9%	15	23.4%	8	12.5%	41	64.1%
JANUARY	50	-21.9%	18	36.0%	3	6.0%	29	58.0%
FEBRUARY	56	12.0%	20	35.7%	7	12.5%	29	51.8%
MARCH	68	21.4%	19	27.9%	10	14.7%	39	57.4%
APRIL	45	-33.8%	19	42.2%	4	8.9%	22	48.9%
MAY	54	20.0%	26	48.1%	6	11.1%	22	40.7%
JUNE	63	16.7%	27	42.9%	6	9.5%	30	47.6%
TOTAL	696		266	38.2%	71	10.2%	359	51.6%
2018/2019 TDOC BACKUP								
JULY	118	-13.9%	8	6.8%	77	65.3%	33	28.0%
AUGUST	140	18.6%	9	6.4%	99	70.7%	32	22.9%
SEPTEMBER	129	-7.9%	8	6.2%	83	64.3%	38	29.5%
OCTOBER	124	-3.9%	8	6.5%	83	66.9%	33	26.6%
NOVEMBER	146	17.7%	8	5.5%	100	68.5%	38	26.0%
DECEMBER	123	-15.8%	8	6.5%	79	64.2%	36	29.3%
JANUARY	96	-22.0%	5	5.2%	63	65.6%	28	29.2%
FEBRUARY	117	21.9%	3	2.6%	81	69.2%	33	28.2%
MARCH	105	-10.3%	12	11.4%	65	61.9%	28	26.7%
APRIL	116	10.5%	13	11.2%	69	59.5%	34	29.3%
MAY	159	37.1%	16	10.1%	104	65.4%	39	24.5%
JUNE	113	-28.9%	4	3.5%	72	63.7%	37	32.7%
TOTAL	1,486		102	6.9%	975	65.6%	409	27.5%
2018/2019 LOCALLY SENTENCED								
JULY	13	-18.8%	1	7.7%	6	46.2%	6	46.2%
AUGUST	19	46.2%	1	5.3%	13	68.4%	5	26.3%
SEPTEMBER	16	-15.8%	2	12.5%	7	43.8%	7	43.8%
OCTOBER	13	-18.8%	1	7.7%	4	30.8%	8	61.5%
NOVEMBER	17	30.8%	1	5.9%	14	82.4%	2	11.8%
DECEMBER	17	0.0%	1	5.9%	7	41.2%	9	52.9%
JANUARY	11	-35.3%	0	0.0%	6	54.5%	5	45.5%
FEBRUARY	17	54.5%	0	0.0%	9	52.9%	8	47.1%
MARCH	11	-35.3%	0	0.0%	4	36.4%	7	63.6%
APRIL	12	9.1%	0	0.0%	7	58.3%	5	41.7%
MAY	14	16.7%	0	0.0%	10	71.4%	4	28.6%
JUNE	11	-21.4%	1	9.1%	4	36.4%	6	54.5%
TOTAL	171		8	4.7%	91	53.2%	72	42.1%
2018/2019 SYSTEM TOTAL								
JULY	187	-10.5%	30	16.0%	87	46.5%	70	37.4%
AUGUST	207	10.7%	32	15.5%	117	56.5%	58	28.0%
SEPTEMBER	204	-1.4%	28	13.7%	97	47.5%	79	38.7%
OCTOBER	209	2.5%	45	21.5%	94	45.0%	70	33.5%
NOVEMBER	224	7.2%	34	15.2%	118	52.7%	72	32.1%
DECEMBER	204	-8.9%	24	11.8%	94	46.1%	86	42.2%
JANUARY	157	-23.0%	23	14.6%	72	45.9%	62	39.5%
FEBRUARY	190	21.0%	23	12.1%	97	51.1%	70	36.8%
MARCH	184	-3.2%	31	16.8%	79	42.9%	74	40.2%
APRIL	173	-6.0%	32	18.5%	80	46.2%	61	35.3%
MAY	227	31.2%	42	18.5%	120	52.9%	65	28.6%
JUNE	187	-17.6%	32	17.1%	82	43.9%	73	39.0%
TOTAL	2,353		376	16.0%	1,137	48.3%	840	35.7%

Release statistics are incomplete because all data are not received by TDOC immediately after inmates are released. Therefore, the numbers for any given month may be different from the previous month's report.

FEMALE INMATE FELON RELEASES IN TENNESSEE FISCAL YEAR 2017/2018

	TOTAL RELEASES	PERCENT CHANGE	PAROLE	PERCENT OF TOTAL	PROBATION CQM. COR.	PERCENT OF TOTAL	EXPIRATION & OTHERS	PERCENT OF TOTAL
2017/2018	TDOC							
JULY	60	22.4%	22	36.7%	6	10.0%	32	53.3%
AUGUST	42	-30.0%	19	45.2%	3	7.1%	20	47.6%
SEPTEMBER	56	33.3%	24	42.9%	9	16.1%	23	41.1%
OCTOBER	47	-16.1%	16	34.0%	5	10.6%	26	55.3%
NOVEMBER	54	14.9%	18	33.3%	9	16.7%	27	50.0%
DECEMBER	60	11.1%	31	51.7%	7	11.7%	22	36.7%
JANUARY	51	-15.0%	31	60.8%	3	5.9%	17	33.3%
FEBRUARY	56	9.8%	24	42.9%	6	10.7%	26	46.4%
MARCH	64	14.3%	28	43.8%	8	12.5%	28	43.8%
APRIL	83	29.7%	32	38.6%	9	10.8%	42	50.6%
MAY	55	-33.7%	27	49.1%	6	10.9%	22	40.0%
JUNE	56	1.8%	14	25.0%	12	21.4%	30	53.6%
TOTAL	684		286	41.8%	83	12.1%	315	46.1%
2017/2018	TDOC BACKUP							
JULY	142	21.4%	11	7.7%	92	64.8%	39	27.5%
AUGUST	131	-7.7%	11	8.4%	93	71.0%	27	20.6%
SEPTEMBER	146	11.5%	12	8.2%	95	65.1%	39	26.7%
OCTOBER	143	-2.1%	9	6.3%	93	65.0%	41	28.7%
NOVEMBER	153	7.0%	11	7.2%	106	69.3%	36	23.5%
DECEMBER	131	-14.4%	7	5.3%	83	63.4%	41	31.3%
JANUARY	127	-3.1%	11	8.7%	84	66.1%	32	25.2%
FEBRUARY	115	-9.4%	8	7.0%	77	67.0%	30	26.1%
MARCH	164	42.6%	13	7.9%	108	65.9%	43	26.2%
APRIL	155	-5.5%	11	7.1%	113	72.9%	31	20.0%
MAY	168	8.4%	10	6.0%	117	69.6%	41	24.4%
JUNE	137	-18.5%	10	7.3%	87	63.5%	40	29.2%
TOTAL	1,712		124	7.2%	1148	67.1%	440	25.7%
2017/2018	LOCALLY SENTENCED							
JULY	16	-23.8%	0	0.0%	9	56.3%	7	43.8%
AUGUST	27	68.8%	3	11.1%	16	59.3%	8	29.6%
SEPTEMBER	14	-48.1%	4	28.6%	6	42.9%	4	28.6%
OCTOBER	17	21.4%	1	5.9%	12	70.6%	4	23.5%
NOVEMBER	25	47.1%	4	16.0%	12	48.0%	9	36.0%
DECEMBER	19	-24.0%	4	21.1%	9	47.4%	6	31.6%
JANUARY	16	-15.8%	5	31.3%	6	37.5%	5	31.3%
FEBRUARY	17	6.3%	4	23.5%	8	47.1%	5	29.4%
MARCH	13	-23.5%	1	7.7%	7	53.8%	5	38.5%
APRIL	26	100.0%	1	3.8%	18	69.2%	7	26.9%
MAY	21	-19.2%	0	0.0%	14	66.7%	7	33.3%
JUNE	16	-23.8%	4	25.0%	10	62.5%	2	12.5%
TOTAL	227		31	13.7%	127	55.9%	69	30.4%
2017/2018	SYSTEM TOTAL							
JULY	218	16.6%	33	15.1%	107	49.1%	78	35.8%
AUGUST	200	-8.3%	33	16.5%	112	56.0%	55	27.5%
SEPTEMBER	216	8.0%	40	18.5%	110	50.9%	66	30.6%
OCTOBER	207	-4.2%	26	12.6%	110	53.1%	71	34.3%
NOVEMBER	232	12.1%	33	14.2%	127	54.7%	72	31.0%
DECEMBER	210	-9.5%	42	20.0%	99	47.1%	69	32.9%
JANUARY	194	-7.6%	47	24.2%	93	47.9%	54	27.8%
FEBRUARY	188	-3.1%	36	19.1%	91	48.4%	61	32.4%
MARCH	241	28.2%	42	17.4%	123	51.0%	76	31.5%
APRIL	264	9.5%	44	16.7%	140	53.0%	80	30.3%
MAY	244	-7.6%	37	15.2%	137	56.1%	70	28.7%
JUNE	209	-14.3%	28	13.4%	109	52.2%	72	34.4%
TOTAL	2,623		441	16.8%	1,358	51.8%	824	31.4%

Release statistics are incomplete because all data are not received by TDOC immediately after inmates are released. Therefore, the numbers for any given month may be different from the previous month's report.

**INCARCERATED FEMALE POPULATIONS, ADMISSIONS AND RELEASES
FISCAL YEAR AVERAGES AND TOTALS 2009/2010 - 2017/2018**

INCARCERATED FEMALE POPULATION AVERAGES FY 2009/2010 - 2017/2018

	AVG. TOTAL FEMALE POP. (A+B+C)	ANNUAL CHANGE	PERCENT OF CHANGE	TDQC FACILITIES (A)	PERCENT OF TOTAL	TDQC BACKUP (B)	PERCENT OF TOTAL	LOCALLY SENTENCED (C)	PERCENT OF TOTAL	LOCAL JAIL TOTAL (B+C)
2009/10	2,116	-25	-1.2%	1,182	55.9%	407	19.2%	527	24.9%	934
2010/11	2,353	237	11.2%	1,189	50.5%	549	23.3%	615	26.1%	1,164
2011/12	2,565	212	9.0%	1,213	47.3%	719	28.0%	633	24.7%	1,352
2012/13	2,656	91	3.6%	1,204	45.3%	770	29.0%	682	25.7%	1,452
2013/14	2,696	42	1.6%	1,376	51.0%	712	26.4%	610	22.6%	1,322
2014/15	2,786	90	3.3%	1,480	53.1%	757	27.2%	551	19.8%	1,308
2015/16	2,827	39	1.4%	1,482	52.4%	821	29.0%	524	18.5%	1,345
2016/17	3,031	204	7.2%	1,761	58.1%	764	25.2%	506	16.7%	1,270
2017/18	3,257	226	7.5%	1,923	59.0%	834	25.6%	501	15.4%	1,334

FEMALE ADMISSIONS FY 2009/2010 - 2017/2018

	ANNUAL TOTAL ADMISSIONS	ANNUAL CHANGE	NEW COMMITTS	PERCENT OF TOTAL	VIOLATORS RETURN	PERCENT OF TOTAL	ESCAPEES & OTHERS	PERCENT OF TOTAL
2009/10	1,985	-1.1%	1,260	63.5%	711	35.8%	14	0.7%
2010/11	2,089	5.2%	1,300	62.2%	767	36.7%	22	1.1%
2011/12	2,322	11.2%	1,479	63.7%	835	36.0%	8	0.3%
2012/13	2,351	1.2%	1,429	60.8%	911	38.7%	11	0.5%
2013/14	2,376	1.1%	1,388	58.4%	978	41.2%	10	0.4%
2014/15	2,228	-6.2%	1,291	57.9%	917	41.2%	20	0.9%
2015/16	2,165	-1.9%	1,257	57.5%	912	41.7%	16	0.7%
2016/17	2,209	1.1%	1,316	59.7%	884	40.0%	7	0.3%
2017/18	2,187	-1.0%	1,293	59.1%	886	40.5%	8	0.4%

FEMALE RELEASES FY 2009/2010 - 2017/2018

	ANNUAL TOTAL RELEASES	ANNUAL CHANGE	PAROLE	PERCENT OF TOTAL	PROB COMM CORR.	PERCENT OF TOTAL	EXPIRATION & OTHERS	PERCENT OF TOTAL
2009/10	2,269	-0.9%	640	28.0%	1,115	48.7%	534	23.3%
2010/11	2,217	-3.1%	632	28.5%	1,079	48.7%	506	22.8%
2011/12	2,527	14.0%	662	26.2%	1,306	51.7%	569	22.1%
2012/13	2,782	10.1%	764	27.5%	1,376	49.5%	642	23.1%
2013/14	2,694	-3.2%	683	25.4%	1,360	50.5%	651	24.2%
2014/15	2,623	-2.6%	587	22.4%	1,309	49.9%	727	27.7%
2015/16	2,492	-5.0%	539	21.6%	1,183	47.5%	770	30.9%
2016/17	2,447	-1.8%	361	14.8%	1,282	52.4%	804	32.9%
2017/18	2,623	7.2%	441	16.8%	1,358	51.8%	824	31.4%

**FEMALE PAROLE GRANT RATES
FISCAL YEARS 2012/2013 - 2018/2019**

	TOTAL HEARINGS	PAROLE GRANTED	% of TOTAL	PAROLE DECLINED	% of TOTAL	DECLINED WAIVER	% of TOTAL	CONTO	% of TOTAL	CONTO/WAIVER	% of TOTAL
FY 12/13	1,578	856	54.2%	524	33.2%	74	4.7%	76	4.8%	48	3.0%
FY 13/14	1,543	793	51.4%	648	35.5%	80	5.2%	69	4.5%	53	3.4%
FY 14/15	1,596	672	42.1%	715	44.8%	88	5.5%	73	4.6%	48	3.0%
FY 15/16	1,588	571	36.0%	786	49.5%	85	5.4%	95	6.0%	51	3.2%
FY 16/17	1,653	401	24.3%	1,023	61.9%	94	5.7%	93	5.6%	42	2.5%

2017/2018

JULY	162	46	28.4%	97	59.9%	4	2.5%	12	7.4%	3	1.9%
AUGUST	140	43	30.7%	74	52.9%	6	4.3%	9	6.4%	8	5.7%
SEPTEMBER	123	31	25.2%	73	59.3%	7	5.7%	12	9.8%	0	0.0%
OCTOBER	150	34	22.7%	98	65.3%	6	4.0%	7	4.7%	5	3.3%
NOVEMBER	134	49	36.6%	63	47.0%	10	7.5%	5	3.7%	7	5.2%
DECEMBER	190	55	28.9%	109	57.4%	5	2.6%	17	8.9%	4	2.1%
JANUARY	187	36	20.3%	122	65.2%	7	3.7%	12	6.4%	8	4.3%
FEBRUARY	134	42	31.3%	79	59.0%	6	4.5%	5	3.7%	2	1.5%
MARCH	139	48	34.5%	71	51.1%	9	6.5%	9	6.5%	2	1.4%
APRIL	169	48	28.4%	92	54.4%	11	6.5%	13	7.7%	5	3.0%
MAY	147	31	21.1%	97	66.0%	11	7.5%	6	4.1%	2	1.4%
JUNE	179	36	20.1%	118	65.9%	14	7.8%	11	6.1%	0	0.0%
TOTAL	1,854	501	27.0%	1,093	59.0%	96	5.2%	118	6.4%	46	2.5%

2018/2019

JULY	154	34	22.1%	98	63.6%	10	6.5%	6	3.9%	6	3.9%
AUGUST	183	40	21.9%	109	59.6%	21	11.5%	8	4.4%	5	2.7%
SEPTEMBER	171	46	26.9%	99	57.9%	11	6.4%	8	4.7%	7	4.1%
OCTOBER	162	33	18.1%	125	68.7%	9	4.9%	13	7.1%	2	1.1%
NOVEMBER	137	25	16.2%	96	70.1%	8	5.8%	5	3.6%	3	2.2%
DECEMBER	151	32	21.2%	92	60.9%	16	10.6%	6	4.0%	5	3.3%
JANUARY	151	42	27.8%	83	55.0%	12	7.9%	9	6.0%	5	3.3%
FEBRUARY	139	41	29.5%	74	53.2%	9	6.5%	11	7.9%	4	2.9%
MARCH	125	44	35.2%	58	46.4%	10	8.0%	11	8.8%	2	1.6%
APRIL	117	56	47.9%	36	30.8%	10	8.5%	8	6.8%	7	6.0%
MAY	170	78	45.9%	60	35.3%	7	4.1%	14	8.2%	11	6.5%
JUNE	138	89	64.5%	22	15.9%	4	2.9%	11	8.0%	12	8.7%
TOTAL	1,818	560	30.8%	952	52.4%	127	7.0%	110	6.1%	69	3.8%

Parole statistics are incomplete because all data are not received by TDOC immediately after inmates are paroled. Therefore, the numbers for any given month may be different from the previous month's report.

**TDOC BED SPACE AND OPERATING CAPACITIES ON
June 30, 2019**

INSTITUTION	June 30, 2019						Facility Characteristics				
	Established Operating Capacity		Assigned Count				Female	Classification	Maximum Security	Special Purpose	Facilities
	# Beds	As % of Total Active Beds	# Inmates	As % of Total Active Beds	As % of Operating Capacity						
Bledsoe County Correctional Complex (M)~	2,239	98.0%	2,207	98.6%	100.6%						
Bledsoe County Correctional Complex (F)^	300	98.0%	274	91.3%	93.2%	X					
DeBerry Special Needs Facility	854	92.0%	662	77.5%	84.2%			X			
Hardeman County Correctional Facility	2,100	94.1%	1,972	93.9%	99.8%			X			
Morgan County Correctional Complex****	2,230	97.0%	2,073	93.0%	95.8%			X			
Mark H. Luttrell Transition Center+++	454	98.0%	299	65.9%	67.2%				X		
Northeast Correctional Complex	1,880	98.0%	1,663	88.5%	90.3%			X			
Northwest Correctional Complex	2,134	98.0%	2,015	94.4%	96.4%			X			
Riverbend Maximum Security Institution	808	97.0%	765	94.7%	97.6%			X			
South Central Correctional Facility	1,700	98.0%	1,643	96.6%	98.6%			X			
Turney Center Industrial Complex*	1,734	98.0%	1,607	92.7%	94.6%			X			
Tennessee Prison for Women	817	98.0%	753	92.2%	94.0%	X					
Trousdale Turner Correctional Center**	2,672	93.6%	2,538	95.0%	101.5%			X			
Whiteville Correctional Facility	1,619	93.0%	1,520	93.9%	101.0%			X			
West Tennessee State Penitentiary (M)***	974	97.0%	897	92.1%	94.9%			X			
West Tennessee State Penitentiary (F)***	1,280	97.0%	967	75.5%	77.9%			X			
TOTALS:	23,795	96.4%	21,855	91.8%	95.3%						

^On September 30, 2013, BCCX (F) began housing female inmates.

~In November 2012, Southeast Tennessee Regional Correctional Facility became Bledsoe County Correctional Complex (BCCX).

*WCBC became part of TCIP in August 2008, resulting in a decrease of 150 total beds and 152 operational beds. TCIP is now Turney Center Industrial Complex (TCIX).

****Morgan County Correctional Complex expansion was completed in April 2009.

CBCX closed April 29, 2015.

**On January 6, 2016, TTCC (Trousdale Turner Correctional Center) began housing inmates.

+++On August 11, 2016, WTSP (West Tennessee State Penitentiary) added housing of female inmates, and MLCC (Mark H. Luttrell Correctional Center) transitioned to a male facility.

PREPARED BY: Tennessee Department of Correction, Decision Support: Research & Planning 615.253.8169

SOURCE: This report reflects inmate population counts at each institution as reported via the TDOC Population Overview Report.

POPULATION AVERAGES BY MONTH

Operational Capacity	BCCX (M)	BCCX (F)	DSNF	HCCF	MCCX	MLTC	NECX	NWCX	RMSI	SCCF	TCIX	TPFW	TTCC	WCFA	WTSP(M)	WTSP(F)	TOTAL
	2,194	294	786	1,976	2,163	445	1,842	2,091	784	1,666	1,699	801	2,501	1,505	945	1,242	22,934
Jul-18	2,091	291	774	1,978	2,064	272	1,747	2,313	769	1,635	1,587	782	2,522	1,504	895	953	22,176
	2,159	291	661	1,995	2,082	280	1,767	2,349	771	1,650	1,607	759	2,548	1,521	917	960	22,318
Aug-18	2,088	287	765	1,975	2,045	298	1,712	2,309	767	1,619	1,579	782	2,530	1,505	893	976	22,130
	2,152	287	657	1,990	2,062	306	1,732	2,346	769	1,636	1,599	763	2,562	1,520	918	986	22,285
Sep-18	2,094	288	762	1,976	2,030	291	1,708	2,315	776	1,622	1,558	779	2,526	1,501	897	984	22,109
	2,154	288	664	1,989	2,046	300	1,723	2,351	780	1,639	1,578	744	2,560	1,517	934	993	22,260
Oct-18	2,091	290	755	1,977	2,032	280	1,709	2,326	776	1,628	1,587	762	2,507	1,507	882	996	22,104
	2,154	291	665	1,990	2,054	292	1,718	2,358	778	1,645	1,602	738	2,541	1,521	912	1,003	22,262
Nov-18	2,081	292	770	1,967	2,002	276	1,688	2,325	767	1,626	1,604	772	2,488	1,497	887	989	22,031
	2,148	292	664	1,976	2,024	289	1,711	2,361	770	1,646	1,622	748	2,526	1,516	920	996	22,209
Dec-18	2,100	282	735	1,972	2,025	267	1,674	2,259	764	1,608	1,615	773	2,466	1,503	864	978	21,883
	2,151	282	668	1,986	2,049	281	1,690	2,285	767	1,622	1,628	748	2,498	1,519	887	991	22,052
Jan-19	2,103	266	749	1,957	2,053	262	1,691	2,020	774	1,624	1,647	751	2,469	1,493	898	1,004	21,759
	2,169	266	664	1,975	2,074	281	1,708	2,052	779	1,644	1,660	721	2,502	1,505	921	1,009	21,934
Feb-19	2,138	277	741	1,963	2,062	266	1,655	1,969	768	1,629	1,643	756	2,513	1,494	888	989	21,750
	2,214	277	654	1,979	2,078	287	1,678	1,999	774	1,648	1,657	710	2,545	1,507	917	1,002	21,924
Mar-19	2,099	282	718	1,959	2,066	267	1,649	2,003	769	1,635	1,628	763	2,515	1,491	886	992	21,720
	2,170	283	648	1,973	2,085	290	1,664	2,030	776	1,650	1,642	737	2,543	1,505	904	999	21,901
Apr-19	2,088	286	740	1,963	2,073	269	1,631	2,019	767	1,634	1,613	774	2,516	1,493	891	983	21,740
	2,167	286	642	1,980	2,095	290	1,652	2,050	773	1,649	1,627	746	2,544	1,505	913	991	21,909
May-19	2,111	285	749	1,956	2,047	260	1,644	2,007	765	1,633	1,596	773	2,514	1,497	888	972	21,698
	2,185	285	651	1,976	2,067	289	1,664	2,042	769	1,647	1,611	749	2,547	1,512	912	981	21,886
Jun-19	2,131	280	754	1,964	2,041	259	1,632	2,000	761	1,628	1,600	767	2,501	1,506	880	969	21,674
	2,208	280	658	1,981	2,060	293	1,646	2,031	766	1,642	1,614	747	2,531	1,520	908	974	21,857
TOTAL	2,101	284	751	1,967	2,045	272	1,679	2,159	768	1,627	1,604	769	2,506	1,499	887	982	21,902
FY18-19 AVG	2,169	284	658	1,983	2,065	290	1,696	2,189	773	1,643	1,620	743	2,537	1,514	914	990	22,068
InHouse FYTD Avg. as a % of Operating Capacity at EOM	95.8%	96.6%	95.6%	99.6%	94.5%	61.2%	91.1%	103.2%	98.0%	97.6%	94.4%	96.1%	100.2%	99.6%	93.9%	79.1%	95.5%

NOTE: This report reflects an average of the daily counts at each institution which are reported via the TDOC Population Overview Report produced by the TDOC Classification section.

POPULATION AVERAGES FOR FISCAL YEARS 2004/2005 - 2018/2019

	BCCX	BCCX	BMCX	CBCX	DSNF	HCCF	MCCX	MLTC	NECX	NWCX	RMSI	SCCF	STSR	TCIP	TCIX	TPFW	TTCC	WCBC	WCFA	WTSP	WTSP	TOTAL	
TOTAL 04-05 AVG	0	0	2,407	1,014	715	1,952	0	415	1,802	2,278	700	1,615	942	1,094	0	723	0	405	1,475	2,472	0	19,135	
	Assigned	0	0	777	1,031	727	1,972	0	419	1,827	2,310	709	1,640	947	1,106	0	733	0	407	1,507	2,516	0	19,403
TOTAL 05-06 AVG	0	0	1,565	1,027	641	1,963	0	416	1,800	2,285	695	1,628	944	1,091	0	732	0	406	1,489	2,476	0	19,123	
	Assigned	0	0	769	1,048	653	1,986	0	419	1,824	2,314	707	1,651	950	1,101	0	740	0	404	1,518	2,516	0	19,380
TOTAL 06-07 AVG	0	0	265	1,032	688	1,964	971	410	1,786	2,292	698	1,631	943	1,092	0	735	0	402	1,487	2,432	0	19,115	
	Assigned	0	0	267	1,054	703	1,994	976	411	1,812	2,325	706	1,653	951	1,103	0	743	0	403	1,516	2,476	0	19,379
TOTAL 07-08 AVG	0	0	530	1,017	712	1,961	971	403	1,779	2,293	701	1,626	938	1,200	0	732	0	376	1,484	2,443	0	19,166	
	Assigned	0	0	533	1,041	727	1,994	975	407	1,807	2,326	709	1,651	945	1,215	0	738	0	376	1,512	2,485	0	19,440
TOTAL 08-09 AVG	0	0	388	1,026	712	1,962	1,152	405	1,768	2,300	696	1,628	929	0	1,530	737	0	0	1,489	2,457	0	19,180	
	Assigned	0	0	393	1,047	725	1,990	1,156	410	1,800	2,334	703	1,653	936	0	1,549	745	0	0	1,522	2,510	0	19,474
TOTAL 09-10 AVG	0	0	0	967	694	1,963	2,144	413	1,782	2,315	695	1,618	917	0	1,514	752	0	0	1,486	2,443	0	19,704	
	Assigned	0	0	0	989	704	1,985	2,162	418	1,816	2,350	703	1,648	924	0	1,536	761	0	0	1,516	2,492	0	20,004
TOTAL 10-11 AVG	0	0	0	953	711	1,965	2,342	417	1,782	2,353	696	1,630	914	0	1,549	761	0	0	1,491	2,416	0	19,979	
	Assigned	0	0	0	968	721	1,989	2,372	419	1,808	2,388	705	1,656	920	0	1,571	769	0	0	1,523	2,469	0	20,278
TOTAL 11-12 AVG	0	0	0	782	725	1,969	2,372	414	1,769	2,360	697	1,628	932	0	1,537	786	0	0	1,486	2,465	0	19,934	
	Assigned	0	0	0	793	736	1,995	2,402	419	1,789	2,393	708	1,656	938	0	1,561	794	0	0	1,521	2,509	0	20,212
TOTAL 12-13 AVG	1,177	0	0	656	715	1,969	2,361	408	1,779	2,342	683	1,634	929	0	1,525	782	0	0	1,489	2,453	0	19,895	
	Assigned	1,190	0	0	655	713	1,991	2,390	414	1,803	2,377	692	1,660	937	0	1,545	790	0	0	1,522	2,499	0	20,154
TOTAL 13-14 AVG	2,015	224	0	659	725	1,964	2,194	401	1,776	2,332	586	1,637	0	0	1,564	779	0	0	1,497	2,437	0	20,760	
	Assigned	2,084	225	0	631	649	2,000	2,243	410	1,806	2,394	596	1,670	0	1,596	778	0	0	1,528	2,475	0	21,065	
TOTAL 14-15 AVG	1,944	261	0	626	668	1,830	2,014	395	1,652	2,212	588	1,529	0	0	1,459	724	0	0	1,397	2,203	0	20,651	
	Assigned	2,026	264	0	605	593	1,869	2,060	407	1,683	2,283	599	1,565	0	1,490	722	0	0	1,429	2,244	0	19,640	
TOTAL 15-16 AVG	2,076	283	0	0	759	1,977	2,099	414	1,783	2,315	770	1,648	0	0	1,543	784	1,196	0	1,507	1,582	0	20,091	
	Assigned	2,150	284	0	0	656	1,998	2,125	426	1,801	2,353	777	1,671	0	1,560	770	1,192	0	1,530	1,590	0	20,260	
TOTAL 16-17 AVG	2,087	284	0	0	765	1,969	2,143	188	1,720	2,262	777	1,633	0	0	1,572	769	2,332	0	1,500	863	700	21,500	
	Assigned	2,152	281	0	0	657	1,991	2,169	192	1,739	2,305	781	1,656	0	1,589	759	2,366	0	1,514	884	702	21,677	
TOTAL YTD 17-18 AVG	2,081	289	0	0	749	1,969	2,108	245	1,736	2,289	778	1,626	0	0	1,573	734	2,480	0	1,499	893	910	21,958	
	Assigned	2,149	289	0	0	643	1,987	2,126	256	1,757	2,331	782	1,642	0	1,590	719	2,512	0	1,514	921	913	22,130	
TOTAL YTD 18-19 AVG	2,101	284	0	0	751	1,967	2,045	272	1,679	2,159	768	1,627	0	0	1,604	769	2,506	0	1,499	887	962	21,902	
	Assigned	2,169	284	0	0	658	1,983	2,065	290	1,696	2,189	773	1,643	0	1,620	743	2,537	0	1,514	914	990	22,068	

Total Operational Capacity 06/30/05

19,670
06/30/06
19,670
06/30/07
19,670
06/30/08
19,804
06/30/09
20,482
06/30/10
20,498
06/30/11
20,527
06/30/12
20,177
06/30/13
21,325
06/30/14
21,545
06/30/15
20,667
06/30/16
22,144
06/30/17
23,106
06/30/18
23,234
06/30/19
22,934

Felon Population by County of Conviction June 30, 2019

County	TDOC		Back-Up		Local		System-wide		County	TDOC		Back-Up		Local		System-wide	
	#	%	#	%	#	%	#	%		#	%	#	%	#	%	#	%
Anderson	143	0.7%	157	2.3%	7	0.3%	307	1.5%	Lauderdale	161	0.7%	33	0.5%	9	0.4%	203	0.7%
Bedford	382	1.8%	48	0.7%	5	0.2%	435	2.1%	Lawrence	154	0.7%	65	0.9%	5	0.2%	224	0.7%
Benton	31	0.1%	15	0.2%	0	0.0%	46	0.2%	Lewis	40	0.2%	8	0.1%	2	0.1%	50	0.2%
Bledsoe	27	0.1%	12	0.2%	2	0.1%	41	0.2%	Lincoln	212	1.0%	39	0.6%	1	0.0%	252	0.8%
Blount	295	1.4%	147	2.1%	3	0.1%	445	2.1%	Loudon	81	0.4%	38	0.6%	9	0.4%	128	0.4%
Bradley	312	1.4%	182	2.6%	10	0.4%	504	2.4%	McMinn	117	0.5%	119	1.7%	7	0.3%	243	0.8%
Campbell	123	0.6%	185	2.7%	4	0.2%	312	1.5%	McNairy	54	0.3%	12	0.2%	2	0.1%	68	0.2%
Cannon	73	0.3%	12	0.2%	4	0.2%	89	0.4%	Macon	77	0.4%	60	0.9%	0	0.0%	137	0.4%
Carroll	67	0.3%	35	0.5%	5	0.2%	107	0.5%	Madison	773	3.6%	89	1.3%	4	0.2%	866	2.8%
Carter	212	1.0%	55	0.8%	22	0.9%	289	1.4%	Marion	147	0.7%	16	0.2%	1	0.0%	164	0.5%
Cheatham	142	0.7%	47	0.7%	10	0.4%	199	0.9%	Marshall	204	0.9%	28	0.4%	1	0.0%	233	0.8%
Chester	49	0.2%	26	0.4%	1	0.0%	76	0.4%	Maury	331	1.5%	87	1.3%	0	0.0%	418	1.3%
Claiborne	118	0.5%	113	1.6%	3	0.1%	234	1.1%	Meigs	16	0.1%	23	0.3%	1	0.0%	40	0.1%
Clay	20	0.1%	18	0.3%	1	0.0%	39	0.2%	Monroe	164	0.8%	104	1.5%	3	0.1%	271	0.9%
Cocke	154	0.7%	41	0.6%	4	0.2%	199	0.9%	Montgomery	435	2.0%	66	1.0%	6	0.2%	507	1.6%
Coffee	265	1.2%	70	1.0%	4	0.2%	339	1.6%	Moore	27	0.1%	4	0.1%	1	0.0%	32	0.1%
Crockett	47	0.2%	14	0.2%	1	0.0%	62	0.3%	Morgan	34	0.2%	11	0.2%	0	0.0%	45	0.1%
Cumberland	239	1.1%	89	1.3%	2	0.1%	330	1.6%	Obion	92	0.4%	23	0.3%	1	0.0%	116	0.4%
Davidson	2,715	12.6%	278	4.0%	428	16.8%	3,421	16.3%	Overton	48	0.2%	24	0.3%	2	0.1%	74	0.2%
Decatur	25	0.1%	7	0.1%	2	0.1%	34	0.2%	Perry	17	0.1%	6	0.1%	1	0.0%	24	0.1%
DeKalb	62	0.3%	52	0.8%	1	0.0%	115	0.5%	Pickett	9	0.0%	6	0.1%	0	0.0%	15	0.0%
Dickson	141	0.7%	75	1.1%	7	0.3%	223	1.1%	Polk	34	0.2%	24	0.3%	0	0.0%	58	0.2%
Dyer	150	0.7%	93	1.4%	0	0.0%	243	1.2%	Putnam	303	1.4%	180	2.6%	2	0.1%	485	1.6%
Fayette	45	0.2%	44	0.6%	6	0.2%	95	0.5%	Rhea	119	0.6%	27	0.4%	8	0.3%	154	0.5%
Fentress	67	0.3%	44	0.6%	3	0.1%	114	0.5%	Roane	107	0.5%	55	0.8%	9	0.4%	171	0.6%
Franklin	154	0.7%	46	0.7%	16	0.6%	216	1.0%	Robertson	117	0.5%	113	1.6%	10	0.4%	240	0.8%
Gibson	133	0.6%	45	0.7%	2	0.1%	180	0.9%	Rutherford	689	3.2%	313	4.5%	29	1.1%	1,031	3.3%
Giles	114	0.5%	36	0.5%	2	0.1%	152	0.7%	Scott	71	0.3%	63	0.9%	1	0.0%	135	0.4%
Grainger	99	0.5%	41	0.6%	7	0.3%	147	0.7%	Sequatchie	67	0.3%	22	0.3%	1	0.0%	90	0.3%
Greene	153	0.7%	80	1.2%	10	0.4%	243	1.2%	Sevier	310	1.4%	178	2.6%	27	1.1%	515	1.7%
Grundy	61	0.3%	21	0.3%	4	0.2%	86	0.4%	Shelby	3,250	15.1%	561	8.1%	1,060	41.6%	4,871	15.7%
Hamblen	153	0.7%	97	1.4%	16	0.6%	266	1.3%	Smith	58	0.3%	35	0.5%	0	0.0%	93	0.3%
Hamilton	729	3.4%	142	2.1%	18	0.7%	889	4.2%	Stewart	30	0.1%	27	0.4%	4	0.2%	61	0.2%
Hancock	17	0.1%	19	0.3%	0	0.0%	36	0.2%	Sullivan	585	2.7%	292	4.2%	30	1.2%	907	2.9%
Hardeman	92	0.4%	30	0.4%	6	0.2%	128	0.6%	Sumner	437	2.0%	275	4.0%	26	1.0%	738	2.4%
Hardin	106	0.5%	38	0.6%	6	0.2%	150	0.7%	Tipton	209	1.0%	70	1.0%	9	0.4%	288	0.9%
Hawkins	100	0.5%	55	0.8%	1	0.0%	156	0.7%	Trousdale	32	0.1%	17	0.2%	0	0.0%	49	0.2%
Haywood	51	0.2%	18	0.3%	2	0.1%	71	0.3%	Unicoi	41	0.2%	12	0.2%	3	0.1%	56	0.2%
Henderson	86	0.3%	119	1.7%	3	0.1%	208	1.0%	Union	112	0.5%	20	0.3%	0	0.0%	132	0.4%
Henry	55	0.3%	39	0.6%	1	0.0%	95	0.5%	Van Buren	13	0.1%	3	0.0%	1	0.0%	17	0.1%
Hickman	75	0.3%	10	0.1%	1	0.0%	86	0.4%	Warren	214	1.0%	39	0.6%	2	0.1%	255	0.8%
Houston	27	0.1%	14	0.2%	1	0.0%	42	0.2%	Washington	155	0.7%	116	1.7%	23	0.9%	294	0.9%
Humphreys	49	0.2%	23	0.3%	4	0.2%	76	0.4%	Wayne	77	0.4%	41	0.6%	0	0.0%	118	0.4%
Jackson	22	0.1%	12	0.2%	0	0.0%	34	0.2%	Weakley	42	0.2%	32	0.5%	0	0.0%	74	0.2%
Jefferson	168	0.8%	83	1.2%	4	0.2%	255	1.2%	White	98	0.5%	38	0.6%	3	0.1%	139	0.4%
Johnson	55	0.3%	39	0.6%	5	0.2%	99	0.5%	Williamson	253	1.2%	72	1.0%	3	0.1%	328	1.1%
Knox	2,125	9.9%	382	5.5%	18	0.7%	2,525	12.0%	Wilson	342	1.6%	142	2.1%	2	0.1%	486	1.6%
Lake	48	0.2%	9	0.1%	0	0.0%	57	0.3%	Unknown	19	0.1%	0	0.0%	580	22.7%	599	1.9%
Total	21,553	100%	6,885	100%	2,551	100%	30,989	100%									

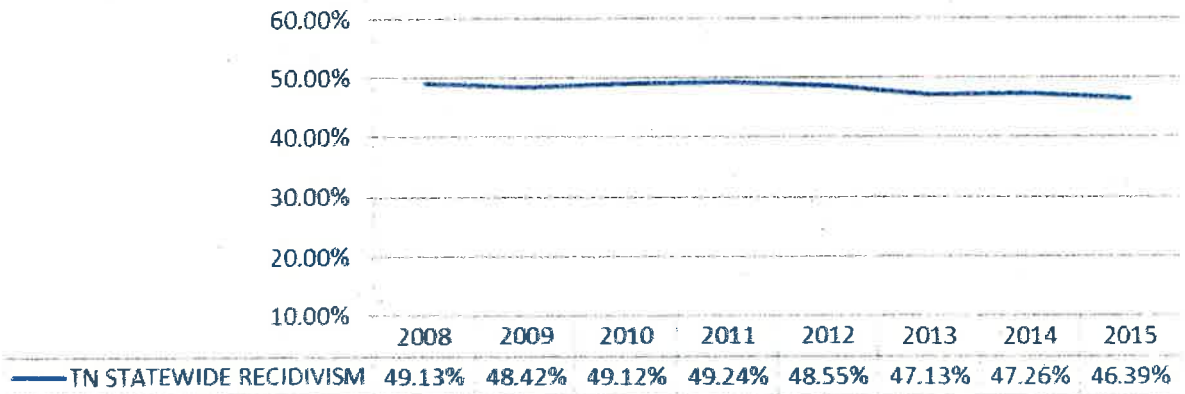
Average Sentence Length by Primary Offense and Location, FY 2019

Offense Type	TDOC Inhouse			TDOC Backup			Locally Sentenced			System-wide		
	# of Inmates	% of TDOC Inhouse	Average Sentence (Years)	# of Inmates	% of TDOC Backup	Average Sentence (Years)	# of Inmates	% of Locally Sentenced	Average Sentence (Years)	# of Inmates	% of System-wide	Average Sentence (Years)
Person												
Homicide												
Murder	3,973	18.4%	27.3	38	0.6%	21.5	11	0.4%	5.4	4,022	13.0%	27.1
Negligent Manslaughter	14	0.1%	7.5	3	0.0%	2.3	3	0.1%	3.3	20	0.1%	6.1
Kidnapping	294	1.4%	19.0	26	0.4%	8.8	7	0.3%	6.3	327	1.1%	17.8
Sex Offenses												
Forcible	2,694	12.5%	26.4	117	1.7%	9.0	41	1.6%	5.3	2,852	9.2%	25.4
Non-Forcible	105	0.5%	11.1	56	0.8%	4.9	18	0.7%	4.6	179	0.6%	8.5
Assault												
Aggravated Assault	2,837	13.2%	15.8	852	12.4%	6.1	390	15.3%	5.1	4,079	13.2%	12.7
Other Assault	42	0.2%	6.4	79	1.1%	2.9	21	0.8%	3.4	142	0.5%	4.0
Property												
Arson	89	0.4%	16.2	25	0.4%	5.4	4	0.2%	5.0	118	0.4%	13.2
Burglary	1,648	7.6%	10.9	1,068	15.5%	5.4	361	14.2%	4.8	3,077	9.9%	8.3
Forgery/Fraud	278	1.3%	9.1	308	4.5%	3.5	68	2.7%	3.9	654	2.1%	5.9
Larceny/Theft	875	4.1%	9.4	851	12.4%	4.2	188	7.4%	4.2	1,914	6.2%	6.6
Robbery												
Aggravated Robbery	2,132	9.9%	17.4	201	2.9%	11.0	41	1.6%	8.2	2,374	7.7%	16.7
All Other Robbery	566	2.6%	10.7	164	2.4%	6.8	125	4.9%	5.5	849	2.7%	9.2
Societal												
Drug Offenses												
Cocaine	1,221	5.7%	15.3	320	4.6%	9.9	101	4.0%	7.1	1,642	5.3%	13.7
Other Drug Offenses	2,959	13.7%	11.3	1,584	23.0%	6.6	307	12.0%	5.7	4,850	15.7%	9.4
Vehicular												
Vehicular Homicide/DUI	192	0.9%	18.1	41	0.6%	9.2	4	0.2%	9.0	237	0.8%	14.8
All Other Vehicular	53	0.2%	7.0	72	1.0%	4.0	13	0.5%	3.3	138	0.4%	5.1
Other												
C/S/F Person	262	1.2%	21.6	23	0.3%	13.2	8	0.3%	5.5	293	0.9%	20.5
C/S/F Property	73	0.3%	10.8	59	0.9%	6.1	22	0.9%	5.5	154	0.5%	8.2
C/S/F Societal/Drugs	173	0.8%	13.5	63	0.9%	5.3	16	0.6%	4.5	252	0.8%	10.9
Escape	12	0.1%	4.7	17	0.2%	3.6	0	0.0%	0.0	29	0.1%	4.0
All Other	1,047	4.9%	8.0	918	13.3%	3.8	221	8.7%	3.9	2,186	7.1%	5.9
Unsentenced	20	0.1%	0.1	0	0.0%	0	581	22.8%	0.0	601	1.9%	0.0
Total	21,563	100%	16.0	6,885	100%	7.0	2,551	100%	5.2	30,989	100%	11.5
Sentence Type												
Death	56	0.8%	N/A	0	0.0%	N/A	0	0.0%	0	56	0.6%	N/A
Life	2,252	30.8%	N/A	13	1.1%	N/A	0	0.0%	0	2,265	25.9%	N/A
85%	4,951	67.7%	25.3	81	6.6%	14.3	7	3.2%	8.1	5,039	57.5%	25.1
1-2 Years	58	0.8%	1.7	1,127	92.3%	1.8	213	96.8%	1.8	1,398	16.0%	1.8

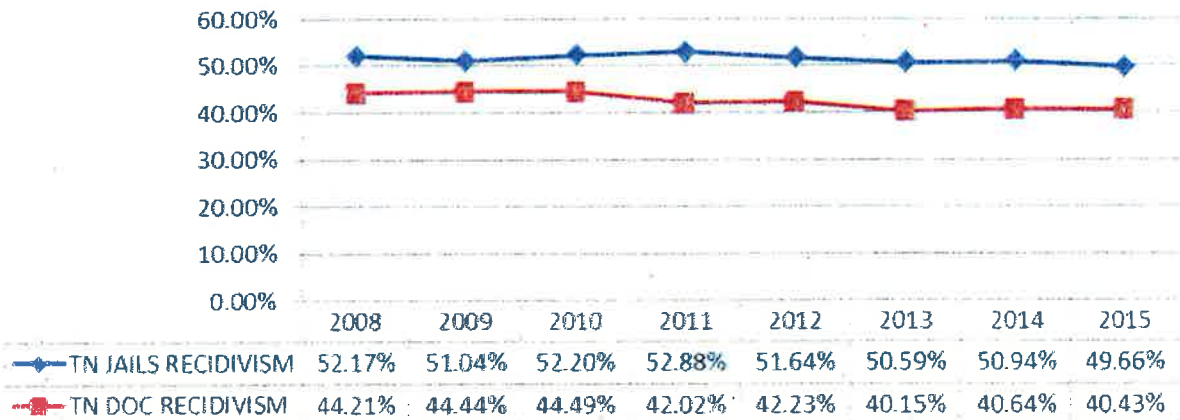
C/S/F refers to conspiracy/ solicitation/ facilitation

The data used for this report was extracted by Strategic Technology Solutions (STS), a division within the Tennessee Department of Finance & Administration, from the Tennessee Offender Management Information System and summarized by Decision Support: Research & Planning in the Tennessee Department of Correction.

TN STATEWIDE RECIDIVISM RATE BY YEAR OF RELEASE



TN RECIDIVISM RATE BY LOCATION AND YEAR OF RELEASE

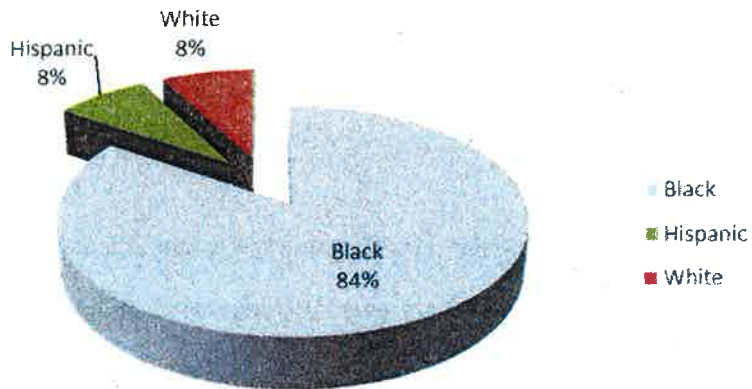


FACT SHEET: Juveniles (Under 18 years old) under Tennessee Department of Correction Jurisdiction on June 8, 2019

The data used for this fact sheet has been extracted from the Tennessee Offender Management Information System (TOMIS) and summarized by Decision Support: Research & Planning of the Tennessee Department of Correction.

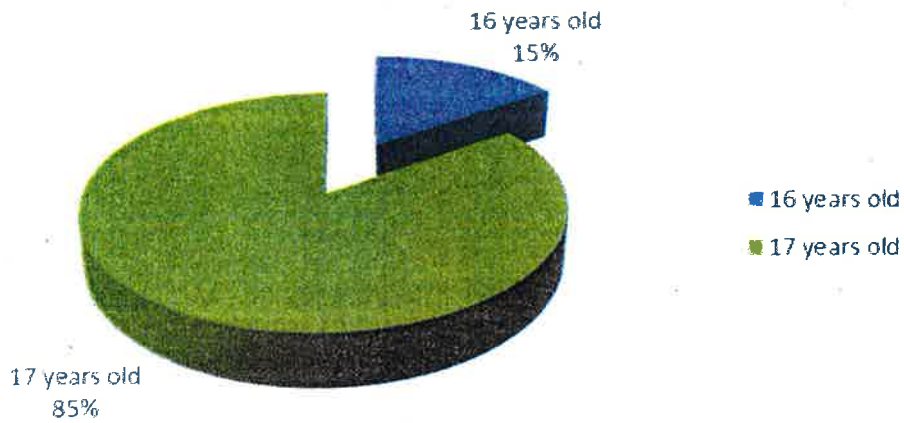
- Thirteen (13) juveniles were under TDOC jurisdiction on June 8, 2019.
- Twelve (12) juveniles were at the Northwest Correctional Complex in Tiptonville, TN and one (1) juvenile was at Sumner County Jail.
- Eleven (11) juveniles were 17 years old and two (2) juveniles were 16 years old.
- Primary Offense categories were Aggravated Robbery (5), Homicide (3), Attempted Aggravated Robbery (1), Robbery (2), Aggravated Rape (1), and Theft (1).
- Sentence range was 1 to 25 years for the thirteen (13) juveniles.
- Eleven (11) juveniles were Black/African American, one (1) juvenile was Hispanic, and one (1) juvenile was White.
- All thirteen (13) juveniles were Male.

Race of Juveniles under TDOC Jurisdiction
on June 8, 2019



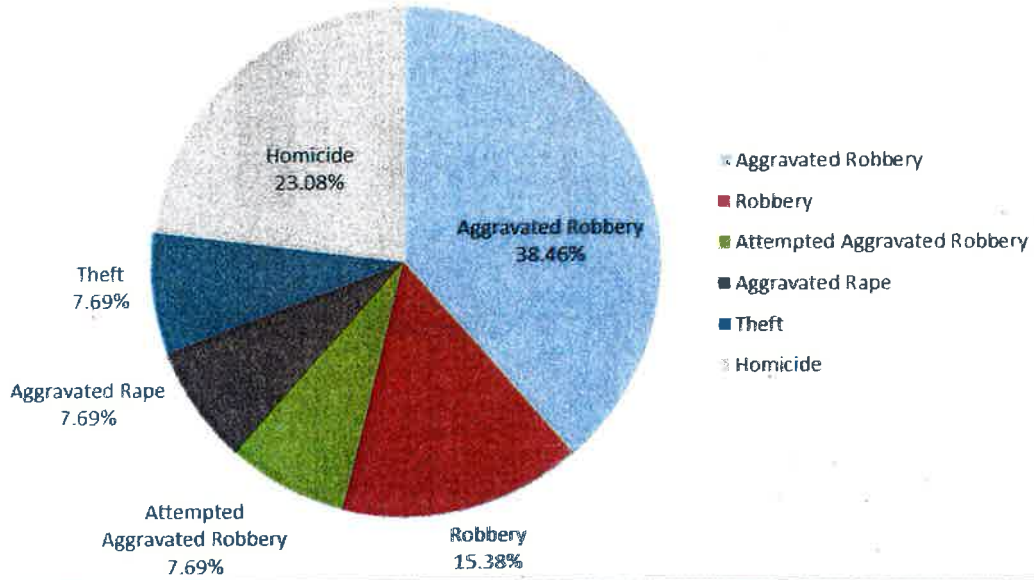
Race	Count
Black	11
Hispanic	1
White	1

Age of Juveniles under TDOC Jurisdiction
on June 8, 2019

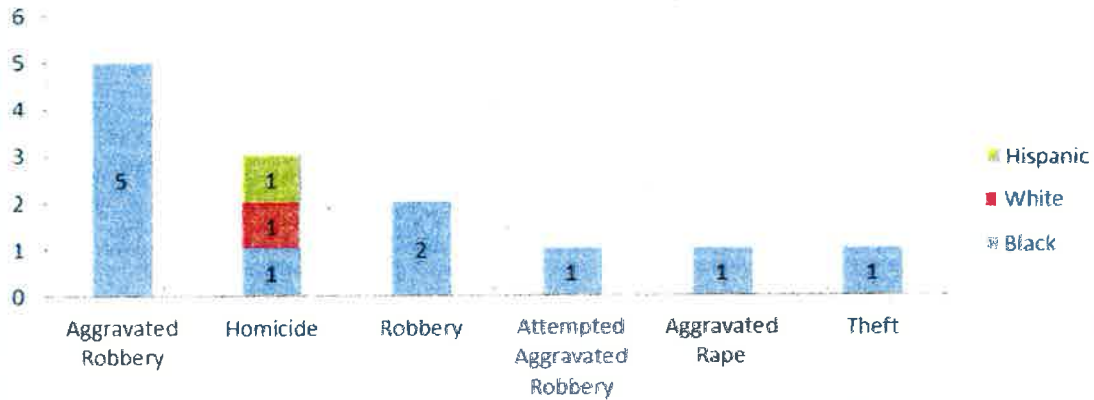


Age	Count
16 Years Old	2
17 Years Old	11

Primary Offense of Juveniles under TDOC Jurisdiction
on June 8, 2019

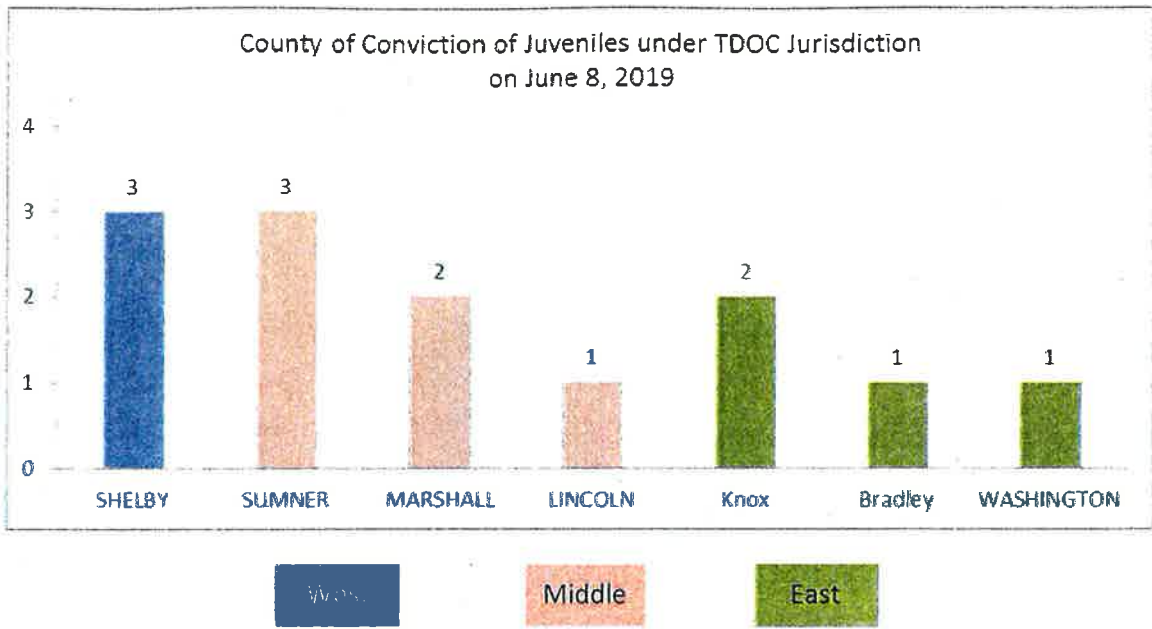


Primary Offense by Race of Juveniles under TDOC Jurisdiction
on June 8, 2019



Primary Offense	Count
Aggravated Robbery	5
Homicide	3
Robbery	2
Attempted Aggravated Robbery	1
Aggravated Rape	1
Theft	1

County of Conviction of Juveniles under TDOC Jurisdiction
on June 8, 2019



Death Row Facts

Number on Death Row: 55

Numbers Breakdown: 54 males and 1 female
26 White, 27 African Americans, 1 Hispanic, 1 Asian

Where are they from?

38 offenders are from the largest metropolitan counties:
Shelby (26), Davidson (5), Knox (4), and Hamilton (3)

13 offenders were convicted in East Tennessee
9 offenders were convicted in Middle Tennessee
33 offenders were convicted in West Tennessee

Oldest on Death Row:

Leonard Jasper Young, 1/22/45, 74 years old
Convicted in Shelby County
On Death Row since November 2002

Only Female on Death Row:

Christa Pike, 3/10/76, 43 years old
Convicted in Knox County
On Death Row since March 1996

Youngest Male on Death Row:

Urshawn Miller, 1/06/89, 30 years old
Convicted in Madison County
On Death Row since March 2018

Longest Time on Death Row:

Larry McKay, 2/26/56, 63 years old and Michael Sample, 5/23/56, 62 years old
Convicted in Shelby County
On Death Row since February 1983

Last Person Sentenced to Death Row:

Urshawn Miller, 1/06/89, 30 years old
Convicted in Madison County
On Death Row since March 2018

Male offenders are housed at Riverbend Maximum Security Institution in Nashville. Female offenders sentenced to death are housed at the Tennessee Prison for Women in Nashville.

The following number of offenders have multiple death sentences: 7 offenders with two death sentences, four offenders with three death sentences and one offender with six death sentences.

TDOC Selected Incidents Summary

for FY 2019														Extraction Date: 09-13-21
	Average Population	Jul 22177	Aug 22130	Sep 22167	Oct 22105	Nov 22031	Dec 21885	Jan 21761	Feb 21751	Mar 21722	Apr 21740	May 21697	Jun 21673	Total 21898
Inc Code	Incident Description													
AFO	ARREST-FELONY-OFN	1	0	0	0	0	0	0	0	0	0	0	0	1
AFS	ARREST-FELONY-STAFF	5	3	4	5	4	4	0	1	2	4	3	4	39
AFV	ARREST-FELONY-VISITOR	5	8	6	5	2	7	0	2	11	4	8	3	61
ARD	ARSON-INJ-PROP DAMG>\$500-OPER DIS	0	0	0	0	1	0	0	0	0	0	0	0	1
ARI	ARSN-SR-INJ-PR DMG>\$500 OPR DIS	0	0	0	0	0	0	0	0	0	0	0	0	0
ARP	ARSON-PROP DAMG >\$500 OPR DISRUP	1	0	1	2	2	0	0	0	0	0	0	0	6
AOO	ASSAULT OFFENDER - WITHOUT WEAPON	25	26	23	29	23	13	14	24	23	38	17	22	277
AOW	ASSAULT OFFENDER - WEAPON	16	7	22	13	13	11	12	13	15	19	13	15	169
ASO	ASSAULT STAFF - WITHOUT WEAPON	28	36	23	32	22	36	34	21	37	28	19	17	333
ASW	ASSAULT STAFF - WEAPON	22	19	22	15	12	20	16	16	17	23	24	22	228
AVO	ASSAULT VISITOR/GUEST - WITHOUT WEAPON	0	0	1	0	0	0	0	0	0	0	0	0	1
AVW	ASSAULT VISITOR/GUEST - WEAPON	0	0	0	0	0	0	0	0	0	0	0	0	0
DEA	DEATH-OFN-NATURAL	7	5	9	3	11	7	7	3	8	6	7	5	78
DEC	DEATH-OFN-EXEC-ELEC CHR	0	0	0	0	1	1	0	0	0	0	0	0	2
DED	DEATH-STAFF-ACCIDENT(ON DUTY)	0	0	0	0	0	0	0	0	0	0	0	0	0
DEF	DEATH-STAFF-SUICIDE (ON DUTY)	0	0	0	0	0	0	0	0	0	0	0	0	0
DEG	DEATH-STAFF-HOMICIDE (ON DUTY)	0	0	0	0	0	0	0	0	0	0	0	0	0
DEH	DEATH-OFN-HOMICIDE	0	0	0	0	1	0	1	0	2	0	1	1	6
DEI	DEATH-OFN-EXEC-LETH INJ	0	1	0	0	0	0	0	0	0	0	1	0	2
DEP	DEATH-OFN-MANNER-PENDING	0	0	0	0	0	0	0	0	0	0	0	0	0
DES	DEATH-OFN-SUICIDE	1	0	0	0	1	1	1	0	0	0	1	0	5
DET	DEATH-STAFF-NATURAL (ON DUTY)	0	0	0	0	0	0	0	0	0	0	0	0	0
DOA	DEATH-OFN-ACCIDENT	2	0	1	0	0	3	0	0	1	3	1	0	11
DVA	DEATH-VISITOR-ACCIDENT	0	0	0	0	0	0	0	0	0	0	0	0	0
DVH	DEATH-VISITOR-HOMICIDE	0	0	0	0	0	0	0	0	0	0	0	0	0
DVN	DEATH-VISITOR-NATURAL	0	0	0	0	0	0	0	0	0	0	0	0	0
DVS	DEATH-VISITOR-SUICIDE	0	0	0	0	0	0	0	0	0	0	0	0	0
DIL	DISTURBANCE-TEMP.CONTROL LOSS	0	0	0	0	0	0	0	0	0	0	0	0	0
DIR	DISTURBANCE-THREAT CONTROL LOSS	0	0	0	0	0	0	0	0	0	0	0	0	0
DIS	DISTURBANCE-MINOR	4	3	4	1	2	4	3	2	4	0	1	3	31
DFI	DRUGS INSIDE SECURE PERIMETER NO POSS	7	8	3	7	4	3	3	4	6	2	6	7	60
DFO	DRUGS OUTSIDE SECURE PERIMETER	1	2	1	3	0	0	0	1	0	0	2	4	14
DRK	DRUGS-CONFIS-SIGNIF AMOUNT-STAFF	0	0	0	0	0	0	0	0	0	1	0	0	1
DRL	DRUGS-CONFIS SIGNIF AMNT-VISITOR	0	1	1	0	0	0	0	0	0	0	0	0	2
DRN	DRUGS - CONFIS. - STAFF	0	1	0	0	0	0	0	0	0	0	0	0	1
DRO	DRUGS - CONFIS. - VISITOR	0	0	0	0	0	0	0	0	1	0	0	0	1
DRP	DRUG PARAPHERNALIA	35	41	29	40	41	49	40	30	46	36	30	26	443
DRS	DRUG SELLING/POSSESSION/USE	136	125	115	115	99	117	120	125	167	100	135	122	1476
IOP	INTOXICANTS FOUND ON PROPERTY	1	0	1	1	0	1	0	0	1	0	0	0	5

The data used for this report was extracted by Strategic Technology Solutions (STS), a division within the Tennessee Department of Finance & Administration, from the Tennessee Offender Management Information System and summarized by Decision Support: Research & Planning in the Tennessee Department of Correction.

TDOC Selected Incidents Summary

for FY 2019														Extraction Date: 09-13-21
	Average Population	Jul 22177	Aug 22130	Sep 22167	Oct 22105	Nov 22031	Dec 21885	Jan 21761	Feb 21751	Mar 21722	Apr 21740	May 21697	Jun 21673	Total 21898
Inc Code	Incident Description													
EPA	EQUIP PROBLEM-MAJOR DISRUPTION	0	0	0	0	0	0	0	0	0	0	0	0	0
ACA	ABSCOND CUSTODY - ATTEMPT	0	0	0	0	0	0	0	0	0	0	0	0	0
ACM	ABSCOND CUSTODY MINIMUM SECURITY	0	0	0	1	1	0	0	0	0	0	0	0	2
ESA	ESCAPE SECURE SUPERVISION	0	0	0	0	0	0	0	0	0	0	0	0	0
ESC	ESCAPE MINIMUM SECURITY UNIT	0	0	0	0	0	0	0	0	0	0	0	0	0
ESF	ESCAPE ATT. SECURE SUPER.	0	0	0	0	1	0	0	0	0	1	0	0	2
ESI	ESCAPE - ATT - MINIMUM SECURITY	0	0	0	0	1	0	0	0	0	0	0	0	1
ESR	RETURN FROM ESCAPE PRIOR TO TOMIS	0	0	0	0	0	0	0	0	0	0	0	0	0
FII	FIRE-SER INJ-PROP DMG>\$500-DISRUP	0	0	0	0	0	0	0	0	0	0	0	0	0
FIP	FIRE-INJ-PROP DMG>\$500-OPR DISRUP	0	0	0	0	0	0	0	0	0	0	0	0	0
FIS	FIRE-PROP DMG >\$500-OPR DISRUP	0	2	0	0	0	0	0	0	0	0	0	0	2
IOT	ILLNESS-OFN-SERIOUS-HOSP	31	46	38	57	44	50	27	32	54	43	40	54	516
ISH	ILL-STAFF-SERIOUS-HOSP(ON DUTY)	2	6	2	3	2	2	6	2	6	3	7	5	46
IVS	ILLNESS-VISITOR-SERIOUS-HOSP	0	1	0	0	0	1	0	1	0	0	0	0	3
IHC	INJURY-ACCIDENT-OFN-WORK RELATED	8	14	12	6	7	7	6	3	4	6	7	4	84
IJB	INJURY-ACCIDENT-STAFF	19	20	17	19	18	9	13	14	21	10	14	18	192
ILB	INJURY-ACCIDENT-VISITOR	2	0	2	1	0	0	0	0	1	1	2	2	11
INC	INJURY-SELF INFLICTED	23	15	16	20	16	28	14	16	10	12	17	25	212
BTH	BOMB THREAT	0	0	0	0	0	0	0	0	0	0	0	0	0
CIP	CELL INSIDE SECURE PERIMETER NO POSS	5	4	7	9	6	6	11	6	3	1	6	10	74
CON	CONTRABAND	168	176	157	180	174	255	190	165	161	138	152	147	2063
EHT	EPIDEMIC-PUBLIC HEALTH THREAT	0	0	0	0	0	0	0	0	0	0	0	0	0
HOS	HOSTAGE SITUATION	0	0	0	0	0	0	0	0	0	0	0	0	0
ILP	INSTITUTIONAL LOCK-DOWN-PARTIAL	2	2	3	2	1	0	1	4	1	1	2	3	22
ILT	INSTITUTIONAL LOCK-DOWN - TOTAL	3	2	4	3	2	2	8	3	0	2	3	1	33
PCT	POSS/USE OF CELLULAR TELEPHONE	116	115	110	116	117	96	140	103	74	86	93	88	1254
PDA	PROPERTY DAMAGE OVER >\$500	3	5	8	5	4	5	2	2	2	5	2	5	48
PGA	PARTICIPATE SEC.THREAT GRP ACTV	19	27	29	25	27	29	23	22	35	26	30	23	315
PGM	POSSESS/SEC. THREAT GRP MATERIAL	23	38	26	36	31	26	33	18	25	19	36	40	351
PTO	POSS/USE/INTRO/SELL TOBACCO PROD-OFNDR	91	68	58	61	68	67	64	66	37	39	40	71	730
RAP	RAPE	0	0	0	0	0	0	1	0	1	0	1	0	3
RIO	RIOT	0	0	0	0	0	0	0	0	0	0	0	0	0
SBT	SABOTAGE-OPR DISRUP	0	0	0	0	0	0	0	0	0	0	0	0	0
SXM	SEXUAL MISCONDUCT	93	76	84	106	92	102	96	108	96	73	108	100	1134
SKI	STRIKE-INMATE-OPER DISRUP	0	0	0	0	0	0	0	0	0	0	0	0	0
SKS	STRIKE-STAFF-OPER DISRUP	0	0	0	0	0	0	0	0	0	0	0	0	0
SUC	SUICIDE-ATTEMPT	4	2	1	3	3	5	8	1	4	2	3	5	41

The data used for this report was extracted by Strategic Technology Solutions (STS), a division within the Tennessee Department of Finance & Administration, from the Tennessee Offender Management Information System and summarized by Decision Support: Research & Planning in the Tennessee Department of Correction.

TDOC Selected Incidents Summary

for FY 2019														Extraction Date: 09-13-21
	Average Population	Jul 22177	Aug 22130	Sep 22167	Oct 22105	Nov 22031	Dec 21885	Jan 21761	Feb 21751	Mar 21722	Apr 21740	May 21697	Jun 21673	Total 21898
Inc Code	Incident Description													
UFC	USE OF FORCE-CHEMICAL AGENTS	36	44	52	50	40	51	53	39	35	45	49	38	532
UFD	USE OF FORCE-DEADLY WEAPON	0	0	0	0	0	0	0	0	0	0	0	0	0
UFE	USE OF FORCE-ELEC. RESTRAINTS	2	5	4	3	1	3	4	4	6	3	8	1	44
UFL	USE OF FORCE - LESS THAN LETHAL	0	0	0	0	0	0	0	0	0	0	0	0	0
UFM	USE OF FORCE-MEDICAL	13	17	21	13	6	9	6	15	17	21	14	23	175
UFP	USE OF FORCE-PHYSICAL	38	32	32	33	24	29	28	23	33	28	39	32	371
WAB	WEAPON-AMMUNITION	0	0	0	0	0	0	0	0	0	0	0	0	0
WAM	WEAPON-AMMUNITION-SIGN AMOUNT	0	0	0	0	0	0	0	0	0	0	0	0	0
WCF	WEAPON-COMMERCIAL FIREARM	0	0	0	0	1	0	0	0	0	0	0	0	1
WCK	WEAPON-COMMERCIAL KNIFE	3	1	0	1	2	5	1	4	1	1	2	0	21
WEB	WEAPON - EXPLOSIVE	0	0	0	0	0	0	0	0	0	0	0	0	0
WEX	WEAPON-EXPLOSIVE-SIGNIF AMOUNT	0	0	0	0	0	0	0	0	0	0	0	0	0
WHF	WEAPON-NON COMMERCIAL FIREARM	0	0	0	0	0	0	0	0	0	0	0	0	0
WHK	WEAPON-NON COMMERCIAL KNIFE	158	195	173	171	180	189	169	110	212	119	161	140	1977
WOT	WEAPON-OTHER	8	7	0	6	8	4	5	5	5	9	5	4	66
WPC	WEAPON-CLUB	1	0	0	0	2	0	0	1	1	1	0	1	7
WRM	WEAPON-RAW MATERIALS	16	11	12	9	12	17	6	17	13	12	11	6	142
WTA	WEAPON-CLASS A TOOL	1	1	0	0	0	0	0	0	0	0	0	0	2
WTB	WEAPON-CLASS B TOOL	0	0	0	0	0	0	0	0	0	0	0	0	0
	TOTAL	1,185	1,218	1,134	1,210	1,130	1,274	1,166	2,440	1,199	971	1,121	1,097	13,731

The data used for this report was extracted by Strategic Technology Solutions (STS), a division within the Tennessee Department of Finance & Administration, from the Tennessee Offender Management Information System and summarized by Decision Support: Research & Planning in the Tennessee Department of Correction.

TDOC Selected Incidents Summary

for FY 2019																	Extraction Date: 09-13-21
	Average Population	BCCX	HCCF	MCCX	MLRC	NECX	NWCX	RMSI	SCCF	SPND	TCIX	TNCA	TPFW	TTCC	WCFA	WTSP	SYSTEM
		2385	1967	2045	272	1678	2155	769	1627	751	1605		770	2506	1499	1970	21898
Inc Code	Incident Description																
AFO	ARREST-FELONY-OFN	0	0	0	0	0	0	0	0	0	0	0	1	0	0	0	1
AFS	ARREST-FELONY-STAFF	1	5	4	0	3	1	1	6	0	7	0	0	2	6	3	39
AFV	ARREST-FELONY-VISITOR	8	2	13	0	3	1	0	1	0	26	0	0	1	0	6	61
ARD	ARSON-INJ-PROP DAMG>\$500-OPER DIS	0	0	0	0	0	1	0	0	0	0	0	0	0	0	0	1
ARI	ARSN-SR-INJ-PR DMG>\$500 OPR DIS	0	0	0	0	0	0	0	0	0	0	0	0	0	0	0	0
ARP	ARSON-PROP DAMG >\$500 OPR DISRUP	0	0	1	0	0	0	2	2	0	1	0	0	0	0	0	6
AOO	ASSAULT OFFENDER - WITHOUT WEAPON	35	45	7	3	15	22	8	25	16	20	0	15	27	28	11	277
AOW	ASSAULT OFFENDER - WEAPON	4	22	14	0	20	19	3	23	4	13	0	0	31	13	3	169
ASO	ASSAULT STAFF - WITHOUT WEAPON	21	19	12	0	36	35	11	68	10	12	0	5	57	36	11	333
ASW	ASSAULT STAFF - WEAPON	21	9	32	0	7	10	22	36	22	4	0	6	30	16	13	228
AVO	ASSAULT VISITOR/GUEST - WITHOUT WEAPON	0	0	0	0	0	0	0	0	0	0	0	0	1	0	0	1
AVW	ASSAULT VISITOR/GUEST - WEAPON	0	0	0	0	0	0	0	0	0	0	0	0	0	0	0	0
DEA	DEATH-OFN-NATURAL	2	0	3	1	2	2	2	5	40	3	0	6	7	5	0	78
DEC	DEATH-OFN-EXEC-ELEC CHR	0	0	0	0	0	0	2	0	0	0	0	0	0	0	0	2
DED	DEATH-STAFF-ACCIDENT(ON DUTY)	0	0	0	0	0	0	0	0	0	0	0	0	0	0	0	0
DEF	DEATH-STAFF-SUICIDE (ON DUTY)	0	0	0	0	0	0	0	0	0	0	0	0	0	0	0	0
DEG	DEATH-STAFF-HOMICIDE (ON DUTY)	0	0	0	0	0	0	0	0	0	0	0	0	0	0	0	0
DEH	DEATH-OFN-HOMICIDE	0	0	1	0	0	1	0	1	1	0	0	0	1	1	0	6
DEI	DEATH-OFN-EXEC-LETH INJ	0	0	0	0	0	0	2	0	0	0	0	0	0	0	0	2
DEP	DEATH-OFN-MANNER-PENDING	0	0	0	0	0	0	0	0	0	0	0	0	0	0	0	0
DES	DEATH-OFN-SUICIDE	0	0	2	0	0	0	1	1	0	0	0	0	1	0	0	5
DET	DEATH-STAFF-NATURAL (ON DUTY)	0	0	0	0	0	0	0	0	0	0	0	0	0	0	0	0
DOA	DEATH-OFN-ACCIDENT	0	1	0	0	0	2	1	0	1	2	0	1	1	1	1	11
DVA	DEATH-VISITOR-ACCIDENT	0	0	0	0	0	0	0	0	0	0	0	0	0	0	0	0
DVH	DEATH-VISITOR-HOMICIDE	0	0	0	0	0	0	0	0	0	0	0	0	0	0	0	0
DVN	DEATH-VISITOR-NATURAL	0	0	0	0	0	0	0	0	0	0	0	0	0	0	0	0
DVS	DEATH-VISITOR-SUICIDE	0	0	0	0	0	0	0	0	0	0	0	0	0	0	0	0
DIL	DISTURBANCE-TEMP.CONTROL LOSS	0	0	0	0	0	0	0	0	0	0	0	0	0	0	0	0
DIR	DISTURBANCE-THREAT CONTROL LOSS	0	0	0	0	0	0	0	0	0	0	0	0	0	0	0	0
DIS	DISTURBANCE-MINOR	1	1	4	0	3	1	2	0	0	0	0	7	0	2	10	31
DFI	DRUGS INSIDE SECURE PERIMETER NO POSS	0	13	13	0	12	8	1	0	0	5	0	1	1	6	0	60
DFO	DRUGS OUTSIDE SECURE PERIMETER	0	4	1	0	5	2	1	0	0	0	0	0	0	1	0	14
DRK	DRUGS-CONFIS-SIGNIF AMOUNT-STAFF	0	0	0	0	0	0	0	1	0	0	0	0	0	0	0	1
DRL	DRUGS-CONFIS SIGNIF AMNT-VISITOR	0	0	0	0	1	0	0	0	1	0	0	0	0	0	0	2
DRN	DRUGS - CONFIS. - STAFF	0	1	0	0	0	0	0	0	0	0	0	0	0	0	0	1
DRO	DRUGS - CONFIS. - VISITOR	0	0	0	0	1	0	0	0	0	0	0	0	0	0	0	1
DRP	DRUG PARAPHERNALIA	52	31	37	0	54	84	18	12	9	87	0	1	28	17	13	443
DRS	DRUG SELLING/POSSESSION/USE	105	172	232	0	96	227	44	86	11	149	0	48	108	83	115	1476
IOP	INTOXICANTS FOUND ON PROPERTY	1	3	0	0	0	0	0	0	0	0	0	0	0	1	0	5

The data used for this report was extracted by Strategic Technology Solutions (STS), a division within the Tennessee Department of Finance & Administration, from the Tennessee Offender Management Information System and summarized by Decision Support: Research & Planning in the Tennessee Department of Correction.

TDOC Selected Incidents Summary

for FY 2019																	Extraction Date: 09-13-21
		BCCX	HCCF	MCCX	MLRC	NECX	NWCX	RMSI	SCCF	SPND	TCIX	TNCA	TPFW	TTCC	WCFA	WTSP	SYSTEM
	Average Population	2385	1967	2045	272	1678	2155	769	1627	751	1605		770	2506	1499	1970	21898
EPA	EQUIP PROBLEM-MAJOR DISRUPTION	0	0	0	0	0	0	0	0	0	0	0	0	0	0	0	0
ACA	ABSCOND CUSTODY - ATTEMPT	0	0	0	0	0	0	0	0	0	0	0	0	0	0	0	0
ACM	ABSCOND CUSTODY MINIMUM SECURITY	0	0	0	2	0	0	0	0	0	0	0	0	0	0	0	2
ESA	ESCAPE SECURE SUPERVISION	0	0	0	0	0	0	0	0	0	0	0	0	0	0	0	0
ESC	ESCAPE MINIMUM SECURITY UNIT	0	0	0	0	0	0	0	0	0	0	0	0	0	0	0	0
ESF	ESCAPE ATT. SECURE SUPER.	0	2	0	0	0	0	0	0	0	0	0	0	0	0	0	2
ESI	ESCAPE - ATT - MINIMUM SECURITY	0	0	0	0	0	0	0	1	0	0	0	0	0	0	0	1
ESR	RETURN FROM ESCAPE PRIOR TO TOMIS	0	0	0	0	0	0	0	0	0	0	0	0	0	0	0	0
FII	FIRE-SER INJ-PROP DMG>\$500-DISRUPT	0	0	0	0	0	0	0	0	0	0	0	0	0	0	0	0
FIP	FIRE-INJ-PROP DMG>\$500-OPR DISRUPT	0	0	0	0	0	0	0	0	0	0	0	0	0	0	0	0
FIS	FIRE-PROP DMG >\$500-OPR DISRUPT	0	0	0	0	0	0	0	0	0	0	0	0	0	2	0	2
IOT	ILLNESS-OFN-SERIOUS-HOSP	19	2	149	3	8	39	4	11	0	13	0	0	167	47	54	516
ISH	ILL-STAFF-SERIOUS-HOSP(ON DUTY)	7	2	6	1	1	4	3	1	4	3	0	3	0	3	8	46
IVS	ILLNESS-VISITOR-SERIOUS-HOSP	0	0	1	0	1	1	0	0	0	0	0	0	0	0	0	3
IHC	INJURY-ACCIDENT-OFN-WORK RELATED	0	0	20	3	0	0	13	2	2	43	0	0	0	1	0	84
IJB	INJURY-ACCIDENT-STAFF	28	6	38	10	45	1	20	5	4	9	0	8	0	14	4	192
ILB	INJURY-ACCIDENT-VISITOR	2	0	2	0	0	1	3	0	0	1	0	0	0	1	1	11
INC	INJURY-SELF INFLICTED	61	10	6	0	3	2	13	9	49	10	0	8	22	2	17	212
BTH	BOMB THREAT	0	0	0	0	0	0	0	0	0	0	0	0	0	0	0	0
CIP	CELL INSIDE SECURE PERIMETER NO POSS	0	1	36	0	15	7	3	2	3	4	0	0	0	3	0	74
CON	CONTRABAND	246	285	184	4	230	271	97	137	57	192	2	60	107	121	70	2063
EHT	EPIDEMIC-PUBLIC HEALTH THREAT	0	0	0	0	0	0	0	0	0	0	0	0	0	0	0	0
HOS	HOSTAGE SITUATION	0	0	0	0	0	0	0	0	0	0	0	0	0	0	0	0
ILP	INSTITUTIONAL LOCK-DOWN-PARTIAL	0	4	1	0	0	2	2	2	0	0	0	0	6	5	0	22
ILT	INSTITUTIONAL LOCK-DOWN - TOTAL	1	6	1	0	3	1	4	7	1	0	0	0	3	6	0	33
PCT	POSS/USE OF CELLULAR TELEPHONE	16	123	296	5	224	260	48	75	7	52	0	2	75	46	25	1254
PDA	PROPERTY DAMAGE OVER >\$500	9	0	2	1	0	14	1	0	8	3	0	2	0	0	8	48
PGA	PARTICIPATE SEC.THREAT GRP ACTV	31	38	33	0	42	20	2	31	2	43	0	0	36	34	3	315
PGM	POSSESS/SEC. THREAT GRP MATERIAL	159	19	61	0	4	33	10	6	4	34	0	0	9	11	1	351
PTO	POSS/USE/INTRO/SELL TOBACCO PROD-OFNDR	59	22	111	2	72	86	48	15	37	93	0	53	40	31	61	730
RAP	RAPE	0	2	0	0	0	0	0	0	0	1	0	0	0	0	0	3
RIO	RIOT	0	0	0	0	0	0	0	0	0	0	0	0	0	0	0	0
SBT	SABOTAGE-OPR DISRUPT	0	0	0	0	0	0	0	0	0	0	0	0	0	0	0	0
SXM	SEXUAL MISCONDUCT	74	25	177	0	69	100	103	142	21	56	0	16	188	28	135	1134
SKI	STRIKE-INMATE-OPER DISRUPT	0	0	0	0	0	0	0	0	0	0	0	0	0	0	0	0
SKS	STRIKE-STAFF-OPER DISRUPT	0	0	0	0	0	0	0	0	0	0	0	0	0	0	0	0
SUC	SUICIDE-ATTEMPT	8	2	0	0	3	1	6	1	4	0	0	0	7	5	4	41

The data used for this report was extracted by Strategic Technology Solutions (STS), a division within the Tennessee Department of Finance & Administration, from the Tennessee Offender Management Information System and summarized by Decision Support: Research & Planning in the Tennessee Department of Correction.

TDOC Selected Incidents Summary

for FY 2019																	Extraction Date: 09-13-21
		BCCX	HCCF	MCCX	MLRC	NECX	NWCX	RMSI	SCCF	SPND	TCIX	TNCA	TPFW	TTCC	WCFA	WTSP	SYSTEM
	Average Population	2385	1967	2045	272	1678	2155	769	1627	751	1605		770	2506	1499	1970	21898
UFC	USE OF FORCE-CHEMICAL AGENTS	4	54	12	0	16	8	16	122	2	4	0	0	160	127	7	532
UFD	USE OF FORCE-DEADLY WEAPON	0	0	0	0	0	0	0	0	0	0	0	0	0	0	0	0
UFE	USE OF FORCE-ELEC. RESTRAINTS	4	0	10	0	5	5	9	0	4	2	0	1	0	0	4	44
UFL	USE OF FORCE - LESS THAN LETHAL	0	0	0	0	0	0	0	0	0	0	0	0	0	0	0	0
UFM	USE OF FORCE-MEDICAL	1	0	21	0	7	5	4	0	129	2	0	1	5	0	0	175
UFP	USE OF FORCE-PHYSICAL	22	36	36	0	27	17	13	55	10	17	0	2	72	57	7	371
WAB	WEAPON-AMMUNITION	0	0	0	0	0	0	0	0	0	0	0	0	0	0	0	0
WAM	WEAPON-AMMUNITION-SIGN AMOUNT	0	0	0	0	0	0	0	0	0	0	0	0	0	0	0	0
WCF	WEAPON-COMMERCIAL FIREARM	0	0	0	0	0	0	1	0	0	0	0	0	0	0	0	1
WCK	WEAPON-COMMERICAL KNIFE	0	10	2	0	2	0	0	0	0	1	0	0	4	2	0	21
WEB	WEAPON - EXPLOSIVE	0	0	0	0	0	0	0	0	0	0	0	0	0	0	0	0
WEX	WEAPON-EXPLOSIVE-SIGNIF AMOUNT	0	0	0	0	0	0	0	0	0	0	0	0	0	0	0	0
WHF	WEAPON-NON COMMERCIAL FIREARM	0	0	0	0	0	0	0	0	0	0	0	0	0	0	0	0
WHK	WEAPON-NON COMMERCIAL KNIFE	10	236	130	0	220	358	21	313	4	70	0	0	314	274	27	1977
WOT	WEAPON-OTHER	2	0	17	0	3	7	1	1	0	6	0	1	22	4	2	66
WPC	WEAPON-CLUB	0	0	0	0	3	3	0	1	0	0	0	0	0	0	0	7
WRM	WEAPON-RAW MATERIALS	10	1	35	0	18	32	7	0	0	18	0	1	12	6	2	142
WTA	WEAPON-CLASS A TOOL	0	0	0	0	0	1	0	0	0	0	0	0	0	0	1	2
WTB	WEAPON-CLASS B TOOL	0	0	0	0	0	0	0	0	0	0	0	0	0	0	0	0
TOTAL		1024	1214	1763	35	1279	1695	573	1206	467	1006	2	249	1545	1046	627	13731

The data used for this report was extracted by Strategic Technology Solutions (STS), a division within the Tennessee Department of Finance & Administration, from the Tennessee Offender Management Information System and summarized by Decision Support: Research & Planning in the Tennessee Department of Correction.

INCIDENT REPORT USER'S GUIDE

The monthly Incident Report provides a summary of TDOC incidents that have occurred at facilities operated by TDOC and those contracted for operation by CoreCivic. The CoreCivic operated facilities are HCCF, SCCF, TTCC, and WCFA.

“Incident” refers to an event that has been documented in the Tennessee Offender Management Information System (TOMIS).

Causes of Death may change after the death certificate is received.

Please note that most incidents reported in the monthly summary may include more than one participant or infraction while other incidents are by definition about a single participant (ex: death or suicide).

The Incident Summary does not include the following incidents:

Code	Description	Class	FLD	FLOODING THE WALK/CELL C	C	PTV	POSSEUSE/INTRO-SELL TOBACCO PROD- VISTR B
ABM	ARREST-FURL/PASS-MISDEMEANOR A	A	FLP	FACILITY LOCK PROBLEM C	C	RAA	REFUSAL/ATTEMPT ALTER DRG TEST C
ABS	ARREST-FURL/PASS-FELONY A	A	FES	FAILURE TO REPORT AS SCHEDULED C	C	RCA	REFUSED CELL ASSIGNMENT C
ABT	ARREST-FURL/PASS-VIOLENT CRIME A	A	FTE	FAILURE TO TURN IN EARNINGS C	C	RDN	REFUSING TO PROVIDE DNA SPECIMEN C
AMS	ARREST - MISDEMEANOR - STAFF	B	FTN	FIRE TRUCK - NON TDOC USE C	C	RPS	REFUSED TO ADEQUATE PARTIC-SAU C
ANM	ARREST-PROBATIONER-NEWS MEDIA B	B	FVI	FURLOUGH VIOLATION C	C	RTP	REFUSED TO PARTICIPATE C
ARE	ARSON-INT-PROP DAMAGE -\$500 B	B	GAG	GAMBLING/GAMING C	C	SAA	STRONG-ARMED ACTIVITY C
ARF	ARSON-PROP DAMAGE -\$500 C	C	HOR	HORSEPLAY C	C	SAR	STRONG-ARMED ROBBERY C
BCS	BODY CAVITY SEARCH C	C	LAO	INJURY ACCIDENT OFFENDER C	C	SOS	SOLICITATION OF STAFF B
BUR	BURGLARY C	C	LAP	INTOXICANTS-POSSESSION/SELLING USE C	C	SEX	SEXUAL HARASSMENT C
CFM	COINFS OF US CURRENCY FROM OVEN C	C	IND	INDECENT EXPOSURE C	C	TAT	TATTOO NOT RECD AT DIAG INTAKE C
CVS	CONSPIRACY TO VIOLATE STATE LAW C	C	INH	INHALANTS C	C	TEL	TELEPHONE PRIVILEGES ABUSE C
DCV	DRESS CODE VIOLATION C	C	INS	INSTITUTIONAL SHAKE DOWN C	C	TEO	TEMPORARY ADDITION
DRN	DEFIANCE C	C	IOF	ILLNESS OFFENDER C	C	TFI	RECEIVING TWO FOOD TRAYS C
DPP	DESTRUCTION OF PERSONAL PROPERTY C	C	LAR	LARCENY C	C	TOF	THREATENING OFFENDER C
DSA	DRUG SCREEN-ATTEMPT TO ALTER C	C	LIT	LITTERING C	C	TRM	TRANSFER DEATH ROW/MAX INMATE C
DSE	DRUG SCREEN-REFUSED C	C	LRT	LATE RETURNING C	C	TSD	TAMPERING-SECURITY DEV OR EQUIP C
DSO	DRUG SCREEN-POSITIVE C	C	NAT	NATURAL DISASTER B	B	UFS	USE OF FORCE-SECURITY RESTRAINTS C
DSP	DESTROYING STATE PROPERTY C	C	NEW	NEWS MEDIA C	C	UFT	UNAUTH FIN OBLIG/TRANS C
EPB	EQUIP-PROBLEM-MONOR DISRUPTION C	C	NID	NO TDOC CARD ON PERSON C	C	UOD	USE OF CARINES, NON-ROUTINE C
EUI	EMERG USE INM CREW OUTSIDE AGCY C	C	NOC	NO TDOC ON CLOTHING C	C	VES	VEHICLE SEARCH C
EWH	ENTERING WAREHOUSE C	C	OOP	OUT OF PLACE C	C	VPR	VIOL OF TDOC/INS POLICIES C
EXT	EXTORTION C	C	OUV	OPERATING UNAUTHORIZED VEHICLE C	C	VSL	VIOLATION OF STATE LAW B
FAL	FAL/ALT/FOR NAME OFF DOC C	C	PCO	POSS-FIND CELL PHN O'S PERIM FENCE B	B	VSP	VISITOR PROBLEM C
FIG	FIGHTING C Y	C	PDB	PROP DAMAGE -\$500 C	C	WDA	WEAPON - DISCHARGE - NON TRAINING B
FIR	FIRE-PROP DMG -\$500 C	C	PIN	PENDING INVESTIGATION C	C	WFN	WEAPON FOUND- NOT ON STATE PROP. C

JOBS, EDUCATION AND REHABILITATIVE PROGRAMS

Felon Inmate Educational Enrollment by Prison: FY 2019

Institution	ABE/HiSET		Volunteer Literacy	Vocational		CMS	College
	Full-Time	Part-Time		Full-Time	Part-Time		
	BCCX	389	0	114	458	0	194
DSNF	44	0	0	0	0	69	0
HCCF	970	0	0	239	0	254	0
MCCX	778	0	31	311	0	244	34
MLTC	0	0	0	68	0	54	1
NECX	449	0	0	253	0	250	4
NWCX	1093	0	0	683	0	285	49
RMSI	159	0	21	56	0	119	14
SCCF	691	0	0	207	0	180	1
TCIX	430	0	0	73	0	115	92
TPFW	215	0	0	115	0	66	43
TTCC	775	0	0	319	0	208	0
WCFA	669	0	0	161	0	426	0
WTRC	151	0	0	93	0	98	102
WTSP	91	0	139	156	0	148	31
Total	6904	0	305	3192	0	2710	375

*Source: TDOC Rehabilitative Services

HiSET Test Results by Prison: FY 2019

Inst.	HiSet Completions			Voc	CMS
	Tested	Passed	Passed	Comp.	Comp.
BCCX	81	47	58%	172	118
DSNF	36	14	39%	0	11
HCCF	79	47	59%	87	107
MCCX	64	23	36%	91	110
MLTC	17	6	35%	0	43
NECX	66	13	20%	81	74
NWCX	147	46	31%	218	168
RMSI	48	14	29%	46	64
SCCF	33	7	21%	46	87
TCIP	99	41	41%		
TCIX	17	8	47%	38	17
TPFW	11	9	82%	3	19
TTCC	160	51	32%	4	30
WCFA	90	35	39%	50	142
WTRC	48	14	29%	72	68
WTSP	44	22	50%	51	54
TOTAL	1040	397	38%	959	1112

*Source: TDOC Rehabilitative Services

Felon Inmate Program Assignments: June 30, 2019

Assignment	Number of Inmates	Percent of Population
Academic Education	1910	8.8%
Behavioral Programming	1301	6%
Boot Camp/SAIU	23	0.1%
Career Technical Education Programs	1839	8.4%
Cognitive Behavioral Intervention Programming	769	3.5%
Community Service	405	1.9%
Medical Credit Incentive	793	3.6%
Mental Health Programs	317	1.4%
Other State Agency	41	0.2%
Outside State Agency	65	0.3%
Program Services	1313	6%
Recycling	268	1.2%
Release Center	44	0.2%
Security Management Unit Program	523	2.4%
Sex Offender Treatment Program	30	0.1%
Support	7450	34.2%
Technical Violators Diversion Program	44	0.2%
Transition Center Program	249	1.1%
TRICOR	888	4.1%
Work Lines	201	0.9%
Work Release	166	0.8%
Young Adult Offender Program	157	0.7%
Other	41	0.2%
Total Assigned	18837	86.3%
*Unassignable Status	2579	11.9%
Job Waiting List	388	1.8%
Total Inmates	21804	100%
% of Eligible Inmates Assigned	97.9%	

*Inmates who cannot be assigned due to their status, which may include those in segregation or initial classification, etc.

*Source: TDOC Rehabilitative Services

TOTAL Hours and Estimated Value of Community Service Work

Facility	1st Qtr	2nd Qtr	3rd Qtr	4th Qtr	Fiscal Year
BCCX	15,457	14,877	16,705	20,767	67,806
HCCF	0	0	0	0	0
MCCX	34,938	26,258	22,001	29,311	112,508
MLTC	6,252	4,064	8,912	7,728	26,956
NECX	29,560	20,319	18,736	24,808	93,423
NWCX	8,648	8,521	4,296	6,851	28,316
RMSI	32,397	22,509	25,781	20,803	101,490
DSNF	0	0	0	0	0
SCCF	0	0	0	0	0
TPFW	23,809	5,472	6,142	6,298	41,721
TTCC	0	0	0	0	0
TCIX	36,224	30,292	25,200	36,892	128,608
WTSP	5,172	684	1,134	1,020	8,010
WCFA	0	0	0	0	0
System Wide	192,457	132,996	128,907	154,478	608,838

Total Savings:	
\$4,414,075.50	
@\$7.25 per hr	

Source: TDOC Rehabilitative Services

INMATE HEALTH AND BEHAVIORAL HEALTH SERVICES

Number of Inmate Patients in Individual Chronic Care Clinics: June 30, 2019

Institution	Hep C	Seizure	Diabetes	HTN	Asthma	COPD	HIV	Cancer	TB	Cardiac
BCCX	609	68	117	546	107	68	27	1	43	575
DSNF	500	53	91	254	20	27	7	0	4	294
HCCF	367	45	99	388	122	20	0	2	15	203
MCCX	500	53	91	417	102	44	28	0	22	454
MLTC	55	0	13	61	16	2	4	0	1	71
NECX	271	17	28	393	71	38	20	1	2	452
NWCX	465	48	159	501	87	61	53	4	15	593
RMSI	121	5	52	191	35	11	13	4	11	212
SCCF	314	35	80	409	71	27	3	4	11	34
TCIX-A	88	2	14	80	7	2	1	1	1	96
TCIX-M	195	10	64	239	56	12	16	1	2	285
TPFW	187	30	45	150	94	27	7	11	4	155
TTCC	403	57	140	411	79	42	4	2	29	61
WCFA	304	25	65	321	88	10	0	1	9	28
WTRC	300	61	51	214	130	56	10	0	3	219
WTSP	290	12	54	208	33	10	11	0	3	229
TOTAL	4969	521	1163	4783	1118	457	204	32	175	3961

*Source: TDOC Clinical Services