



Department of
**Environment &
Conservation**

Solid Waste Program Update



TM

TN Disposal Trends and Updates

Annual Engineering Reports

C. FACILITY CONDITIONS EXPLAIN THE **METHODOLOGY** TO CALCULATE THE FOLLO

1. TOTAL PERMITTED LANDFILL FOOTPRINT (AREA PERMITTED FOR DISPOSAL - ACRES)

2. DESIGN CAPACITY OF TOTAL LANDFILL FOOTPRINT (CUBIC YARDS)

3. TOTAL ACRES CURRENTLY CONSTRUCTED

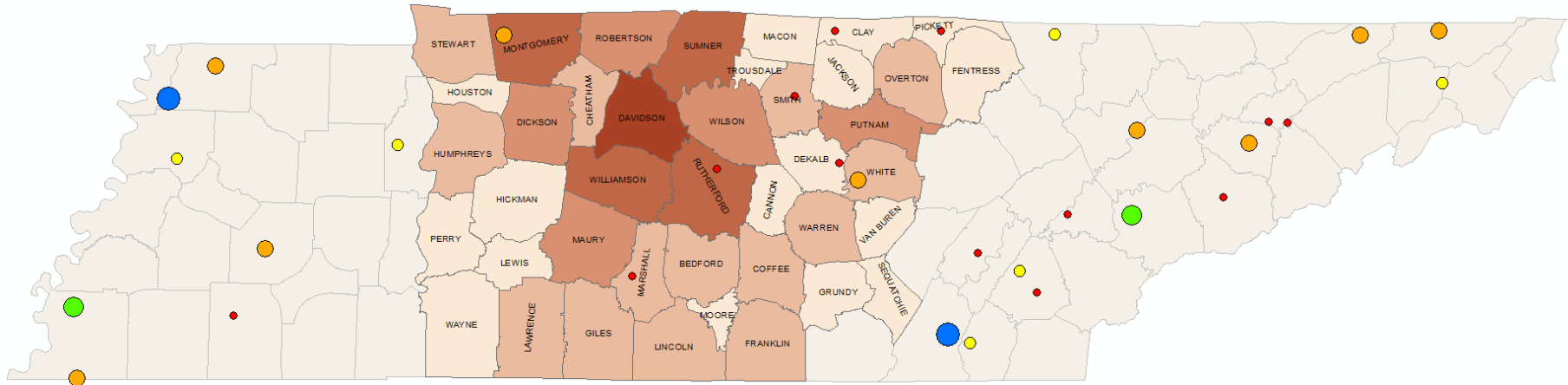
4. CAPACITY OF CONSTRUCTED AREA(S) (CUBIC YARDS)

5. TOTAL REMAINING VOLUME WITHIN CONSTRUCTED AREA(S) (CUBIC YARDS)

6. OPERATIONAL WASTE DENSITY (POUNDS / CUBIC YARD)

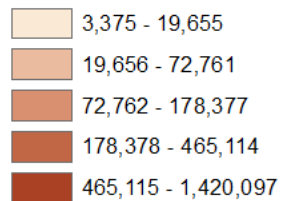
7. CURRENT WASTE ACCEPTANCE RATE (TONS PER YEAR)

Tennessee Landfill Capacity/Years



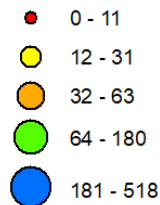
Total Waste Produced per County

Middle Grand Division Tons of Waste Produced



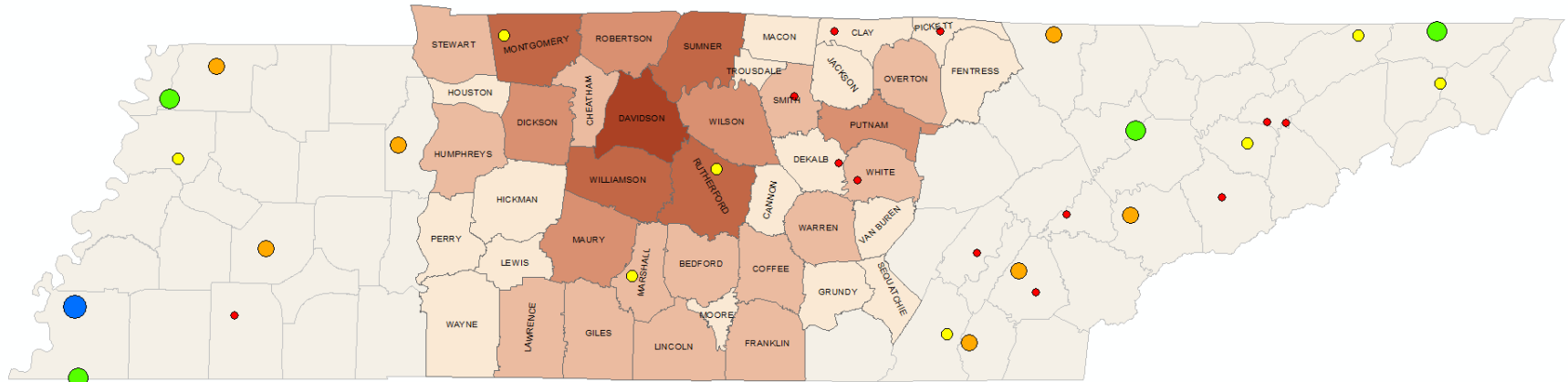
Landfill Years of Life Remaining

Class I Landfills (MSW) Years of Life Remaining



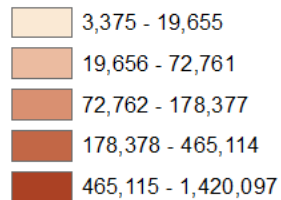
- 1: Remaining volume calculations are based on annual engineering reports TDEC receives from Class I landfills.
- 2: Remaining volume is calculated based on the waste acceptance rate for each individual landfill. Waste acceptance rate is dependent upon, in part, the amount of waste generated in a particular area. For example, the amount of waste generated in Obion County is significantly less than that of Davidson County. If Obion County generated the same amount of waste as Davidson County, then the remaining volume of the landfills in Obion County would be lower than as seen on this map.
- 3: All values shown are only as accurate as the information presented by each facility. While the Division has attempted to verify and confirm all numbers, errors and gaps may exist in the information.
- 4: Remaining volume calculations are based on currently permitted airspace. Some landfills have the ability to apply for an expansion which, if approved, would increase the remaining volume for that landfill.

Tennessee Landfill Capacity/Volume



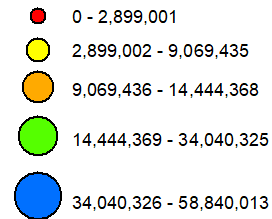
Total Waste Produced per County

Middle Grand Division Tons of Waste Produced



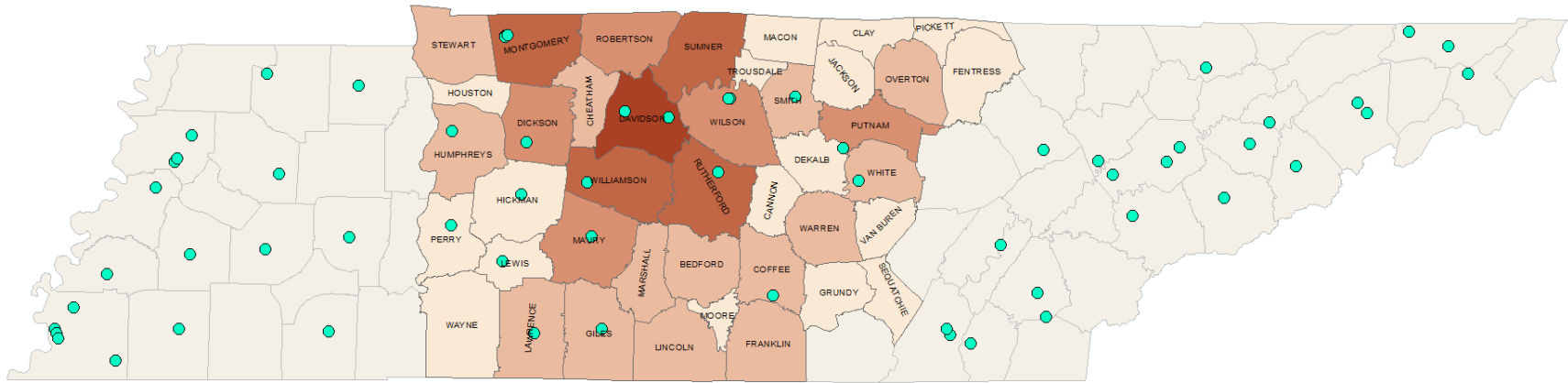
Landfill Remaining Volume (cubic yards)

Class I Landfills (MSW) Remaining Capacity (cubic yards)



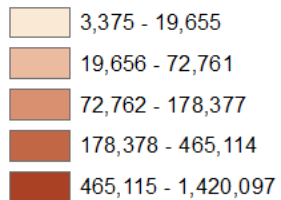
- 1: Years of life remaining calculations are based on annual engineering reports TDEC receives from Class I landfills.
- 2: Years of life remaining is calculated based on the waste acceptance rate for each individual landfill. Waste acceptance rate is dependent upon, in part, the amount of waste generated in a particular area. For example, the amount of waste generated in Obion County is significantly less than that of Davidson County. If Obion County generated the same amount of waste as Davidson County, then the remaining life of the landfills in Obion County would be lower than as seen on this map.
- 3: All values shown are only as accurate as the information presented by each facility. While the Division has attempted to verify and confirm all numbers, errors and gaps may exist in the information.
- 4: Years of life remaining calculations are based on currently permitted airspace. Some landfills have the ability to apply for an expansion which, if approved, would increase the years of life remaining for that landfill.

Tennessee Landfill Capacity/Volume



Total Waste Produced per County

Middle Grand Division Tons of Waste Produced



Location of Class III and IV Landfills (C&D)

Class III and IV Landfills

TDEC-DSWM Activities

- Facility Inspection and Violation Trends

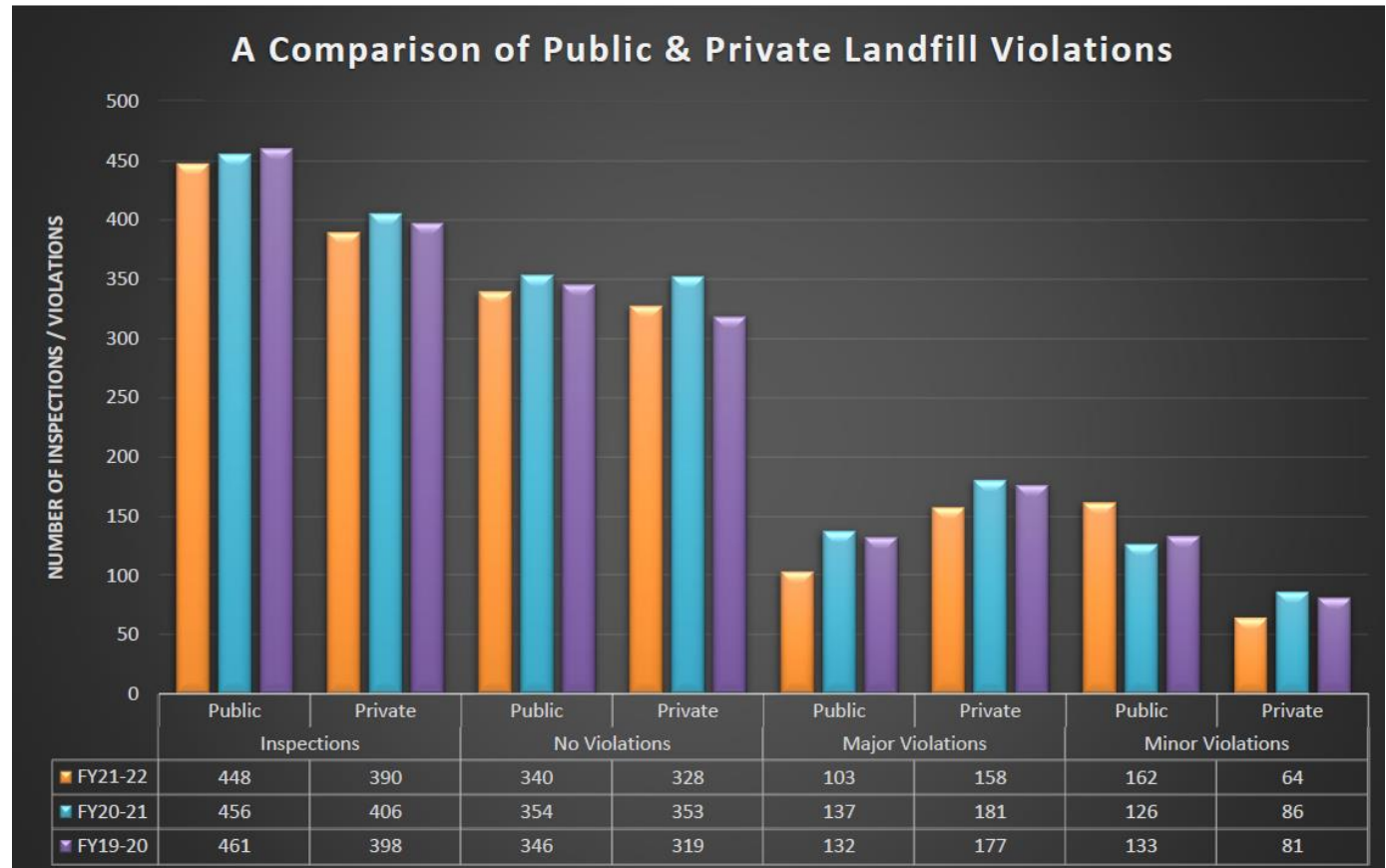
Inspections Report								
	<i>Inspections²</i>	<i>Major Violation</i>	<i>Minor Violation</i>	<i>No Violation</i>	<i>% of Inspections that led to a Violation</i>	<i>Number of Follow Up Inspections</i>	<i>Number of Follow Up Inspections that led to Violation</i>	<i>% of Follow Up Inspections that led to a Violation</i>
FY22-23	656	77	82	587	11%	21	9	43%
FY21-22	3,019	300	407	2,696	11%	170	55	32%
FY20-21	3,039	355	453	2,672	12%	235	59	25%
FY19-20	2,705	472	410	2,322	14%	288	80	28%

1. The inspection report table only includes active facilities. It omits NRS sites, post-closure and construction inspections.
2. Includes follow up inspections

TDEC-DSWM Activities

- Facility Inspection and Violation Trends

Facility Type	Public	Private
Class I	19	16
Class II	0	31
Class III/IV	42	15



TDEC-DSWM Activities

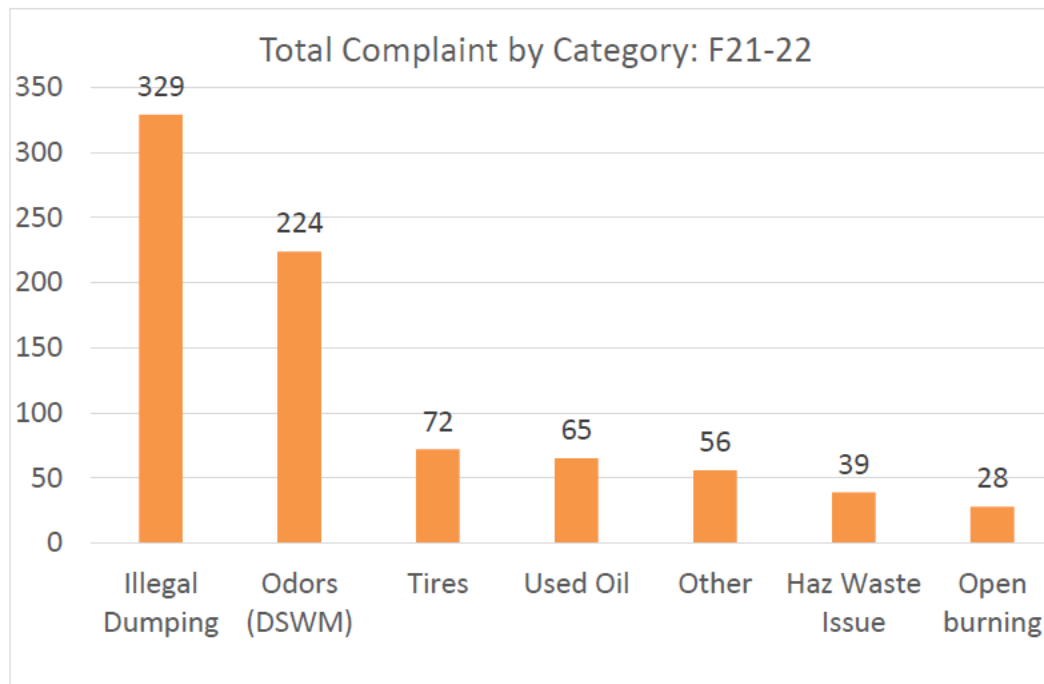
- Facility Inspection and Violation Trends

Common Violations FY21-22	
Violation	Count
Leachate observed at site	79
Washout of solid waste	43
Leachate entering runoff	39
Inadequate erosion control	39
Unsatisfactory initial cover	36
Unsatisfactory intermediate cover	32
Inadequate maintenance of runon/runoff system(s)	32
Operation does not comply with notification	29
Inadequate collection/management of liquid residue	29
Waste not confined to a manageable area	28
Improper storage of solid waste	26
1200-1-7-.02(1)(c)1(i)(XII): Unsatisfactory litter control (SWP/TRF)	24
Inadequate maintenance of leachate management system	23
Operation does not correspond with permit condition(s)	22
1200-1-7-.10(3)(i)4 Unsatisfactory litter control (CCC)	19

TDEC-DSWM Activities

- Complaint Investigations

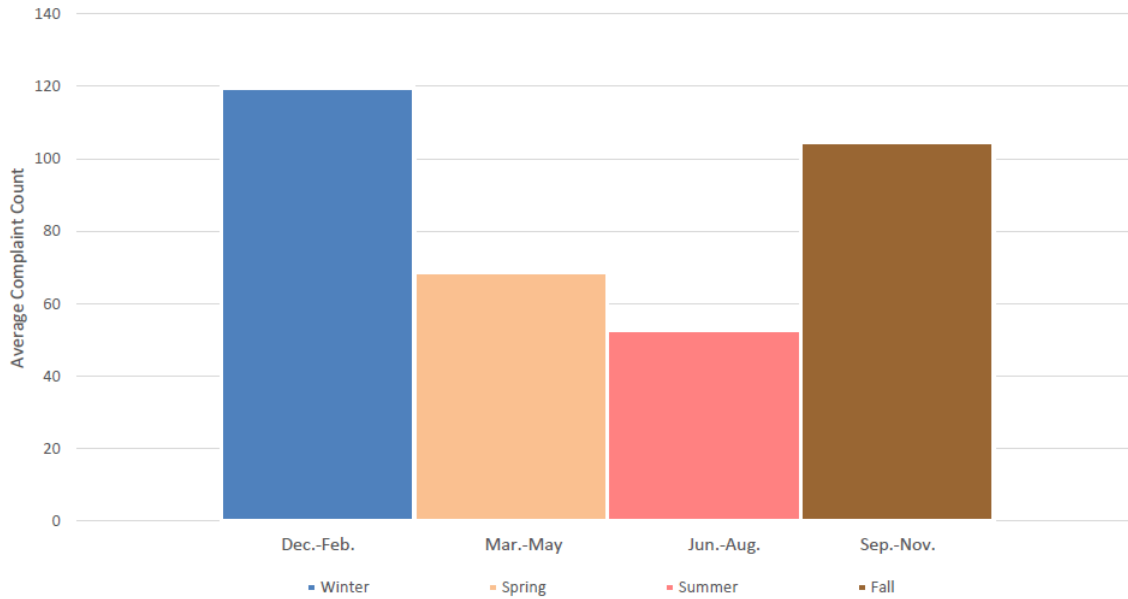
Total Complaints				
FY18-19	FY19-20	FY20-21	FY21-22	FY22-23
1,069	1,004	869	815	179



TDEC-DSWM Activities

- Complaint Investigations

2019-2021 Seasonal Odor Complaint Average



Season	Total Number of Complaints			Average
	2019	2020	2021	
Winter Dec.-Feb.	179	118	62	120
Spring Mar.-May	96	47	63	69
Summer Jun.-Aug.	95	32	31	53
Fall Sep.-Nov.	111	119	84	105



TM

2023 Regulatory Change Package

Solid Waste Regulatory Clarifications and Updates Proposal

- Last Solid Waste Program Rule Making Process occurred in 2017 with regulations passed in Dec. 2019
- Since then, DSWM has identified some relatively minor but reoccurring regulatory topics we feel we have solutions for.
- Informal Stakeholder input occurred in 3 separate meetings in person and virtually October 25th, November 2nd, and November 3rd.

Items under consideration

- Require a Roof on Transfer Stations
- Clarify Major vs. Minor Modifications
- Remove Notarization Requirements on Annual and Triennial Engineering Reports
- Define Appurtenances and Associated Buffer Requirements
- Clarifying Due Process for Minor Modifications
- Clarify Regulatory Review Timeframes
- Clarify Permit Fees
- Leachate Storage Secondary Containment
- Avoiding Leachate Pipe Penetrations of HDPE Liners
- Final Grade Closure Requirement Changes

Next Steps

- We will be compiling comments and working internally with our rulemaking teams.
- Currently allowing extra time for various parties to add additional informal input.
- At next board meeting we will give a formal presentation to the board followed by a vote to go out to formal public comment.

Contact

Email: Nickolaus.Lytle@tn.gov

Phone: 615-854-4581

Mail: Division of Solid Waste Management
William R. Snodgrass Tennessee Tower
312 Rosa L. Parks Avenue, 14th Floor
Nashville, TN 37243