

Requirements for Small Systems on Quarterly Monitoring

WHO DOES THIS FACTSHEET APPLY TO?

GROUND WATER PUBLIC WATER SYSTEMS (PWSs) THAT SERVE 1,000 OR FEWER PEOPLE and collect at one routine total coliform (TC) **SAMPLE QUARTERLY.**

RTCR

What to Do?

Step 1

Develop/update your sample siting plan.

Step 2

Collect your drinking water samples.

Step 3

Conduct required actions.



Additional RTCR Factsheets:

- Requirements for Small Systems on Monthly Monitoring
- Requirements for Seasonal Systems
- Repeat Monitoring Requirements for Small Systems
- Level 1 & Level 2 Assessments and Corrective Actions

FOR ASSISTANCE, PLEASE CONTACT TDEC:

NAME/DEPT.: DAVID MONEY TDEC
 DIVISION OF WATER RESOURCES

PHONE: 931-8940-4172

EMAIL: DAVID.MONEY@TN.GOV

ATTENTION!

All PWSs must comply with the RTCR requirements starting April 1, 2016.

✓ Are you a PWS? Contact your TDEC Regional Field Office at 1-888-891-8332.

STEP 1: DEVELOP/UPDATE YOUR SAMPLE SITING PLAN*

CONTACT YOUR STATE FOR ASSISTANCE.

- **DEVELOP A SAMPLE SITING PLAN AND HAVE IT READY FOR USE BY APRIL 1, 2016.** If you already have a sample siting plan in use for the Total Coliform Rule (TCR), update this plan to meet the requirements of the RTCR.
 - **LIST THE LOCATIONS WHERE YOU WILL TAKE YOUR SAMPLES (ROUTINE AND REPEAT):** Any repeat sampling location that is also used for GWR triggered source water monitoring must be included.
 - **INCLUDE YOUR ROUTINE COLLECTION SCHEDULE:** for example, the first Monday of every calendar quarter between Jan. 1 – March 31, April 1 – June 30, July 1 – Sept. 30, and Oct. 1 – Dec. 31; or every calendar year from Jan. 1 – Dec. 31.
 - **UPDATE TO REFLECT CHANGES AT YOUR PWS:** The sample siting plan is a living document and should be updated to reflect changes at your PWS such as: major changes in population; a new or additional water source; infrastructure changes, such as a change in the distribution system (i.e. extended/abandoned lines) or pressure zones; or, changes in disinfection or other treatment.

STEP 2: COLLECT YOUR DRINKING WATER SAMPLES

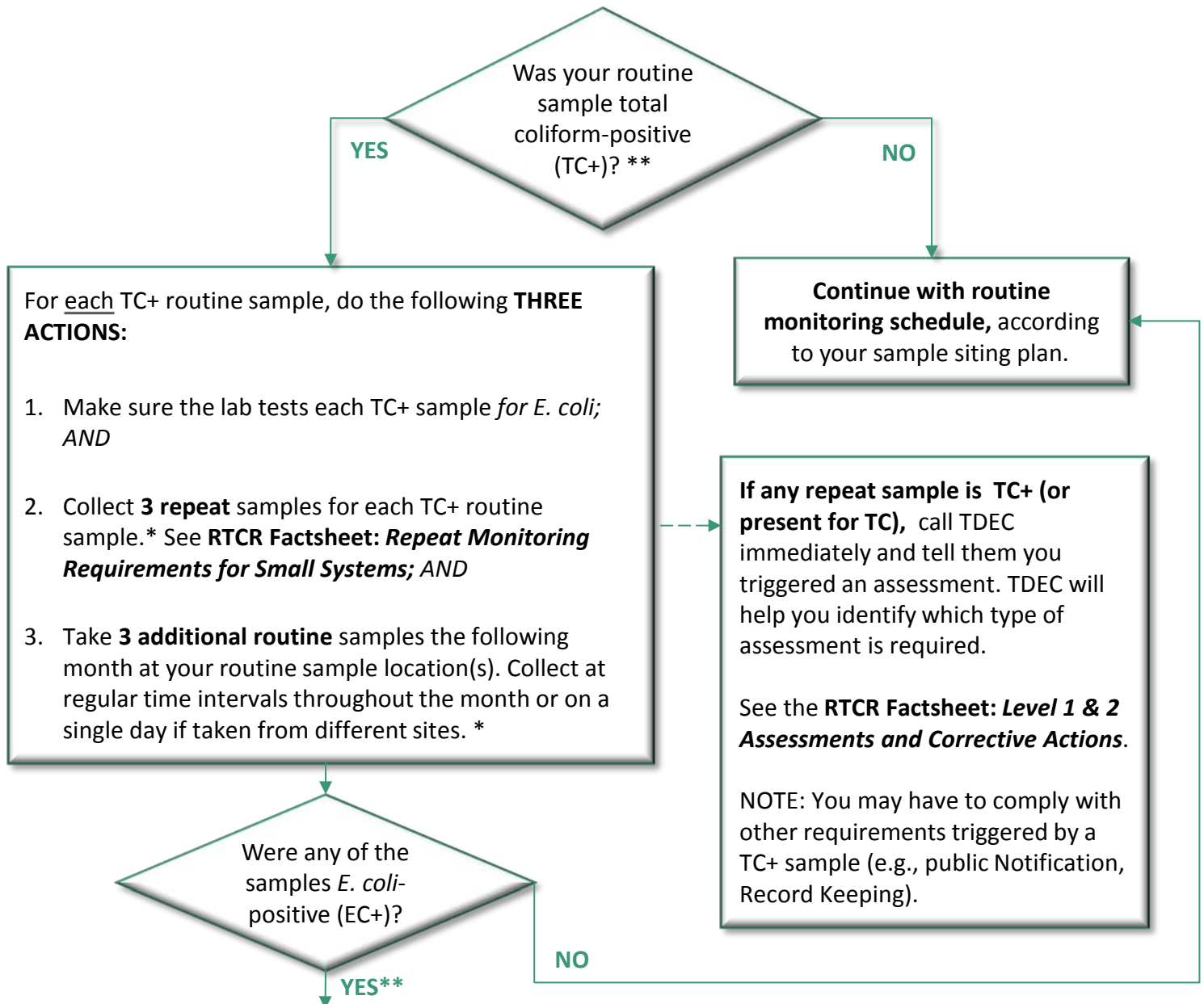
KNOW YOUR RTCR ROUTINE SAMPLING REQUIREMENTS.

- **COLLECT AT LEAST ONE 100 ML** routine drinking water sample every quarter starting April 1, 2016.
- **IMMEDIATELY SEND YOUR SAMPLE TO A STATE-CERTIFIED LAB** that performs total coliform drinking water analysis.
 - Remember the lab must begin analyzing the drinking water sample no later than the 30th hour from the collection time.
 - If necessary, ship the sample overnight and refrigerate or ice the sample using “blue” ice (cooled to about 4° to 10° C).

NOTE

* The sample siting plan is subject to review and revisions by TDEC Division of Water Resources Regional Field Office Staff

STEP 3: CONDUCT ACTIONS REQUIRED AS A RESULT OF YOUR SAMPLING



Call TDEC! You have to perform a Level 2 Assessment if the PWS has any of the following occurrences:

- TC+ Routine and EC+ Repeat sample;
- EC+ Routine and TC+ Repeat sample;
- The PWS fails to take all 3 required repeat samples following an EC+ routine sample; or,
- The PWS fails to test for *E. coli* when any repeat sample is TC+.

Within 30 days after you learned your PWS has triggered an assessment, a completed assessment form must be submitted to the state. Download the state form at <http://tn.gov/environment/topic/wr-wq-dw-drinking-water>. See the **RTCR Factsheet: Level 1 & 2 Assessments and Corrective Actions**.

NOTES

*If you are missing any routine, repeat, or additional routine samples, contact TDEC.

**Call your state on the same day you learn of the EC+ result, or by the end of the next business day, or 1-888-891-8332 and tell them you received an EC+ result.