



THIS MEMORIAL IS
SPONSORED BY POST 1918
AMERICAN LEGION



THIS MEMORIAL WAS
SPONSORED BY POST 14
AMERICAN LEGION 1942

THIS MEMORIAL WAS
SPONSORED BY POST 14
AMERICAN LEGION 1942







WORLD WAR II

... AND COMRADES WHO GAVE THE ALL AND THE BEST FOR A BETTER WORLD

[List of names]

UNLIMITED GARAGE



SEMPER FIDELIS

DEDICATED
TO THE MEMORY OF
THE MARINES OF
HAMILTON COUNTY
WHO GAVE THEIR
LIVES IN SERVICE
OF THEIR COUNTRY





SEMPER FIDELIS

DEDICATED
TO THE MEMORY OF
THE MARINES OF
HAMILTON COUNTY
WHO GAVE THEIR
LIVES IN SERVICE
OF THEIR COUNTRY



SUNTRUST





NO
PARKING
ANY
TIME

causeway

causeway



Patten Pkwy 000
Georgia Ave 800

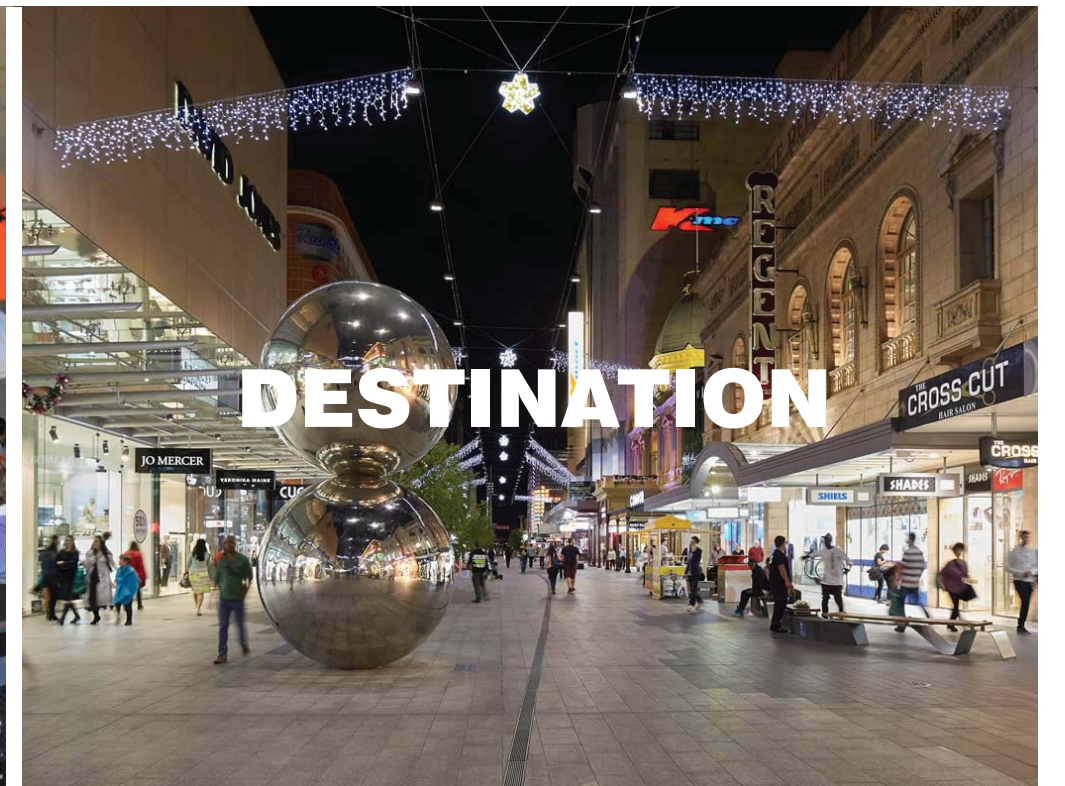
THE PALA





City of Chattanooga
Petition for Waiver
Attachment 6

30% Design Presentation

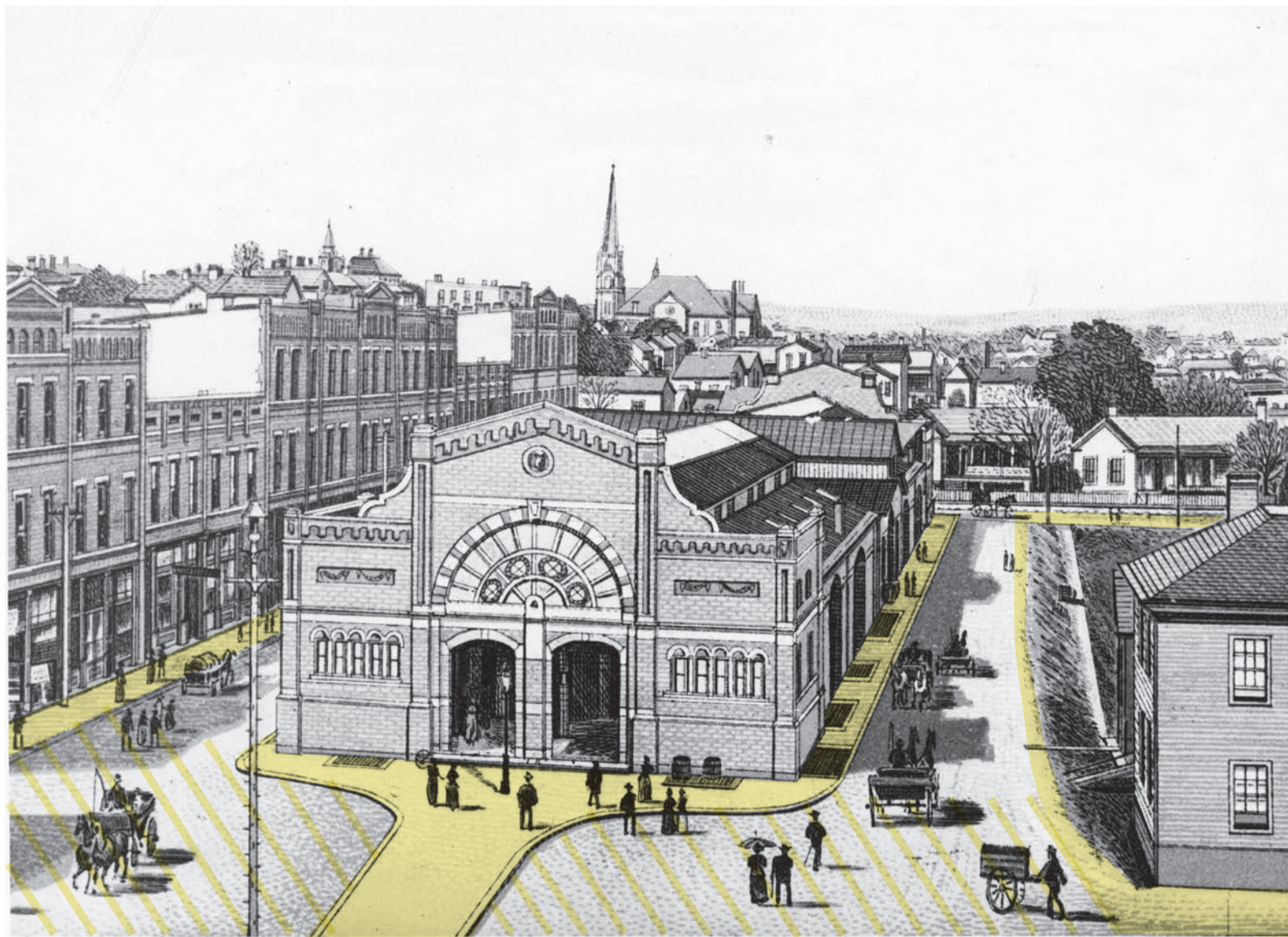


PROJECT DRIVERS

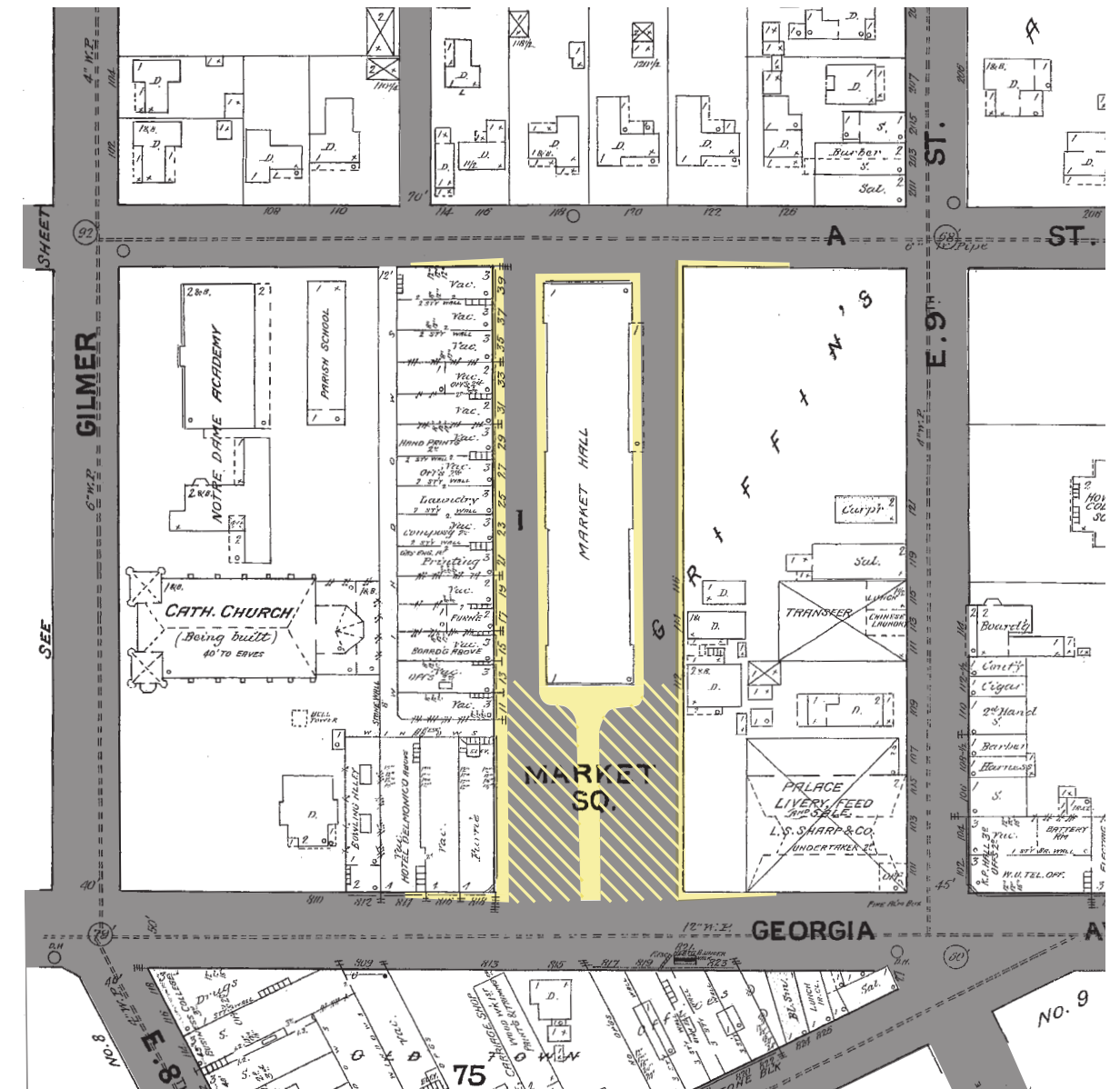
Patten Parkway
Chattanooga, Tennessee

PATTEN PARKWAY

An Evolving Story



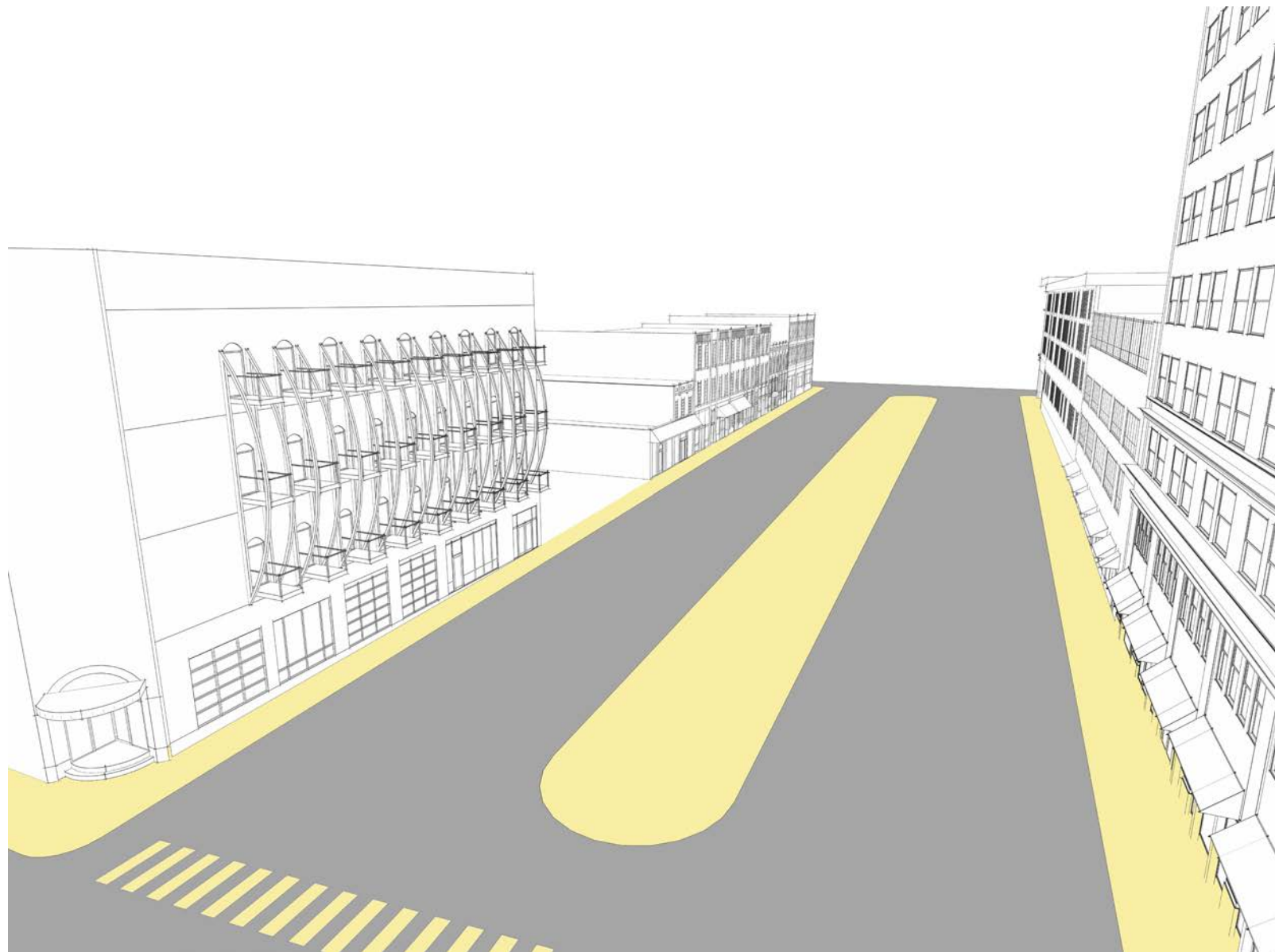
Market building ~1896



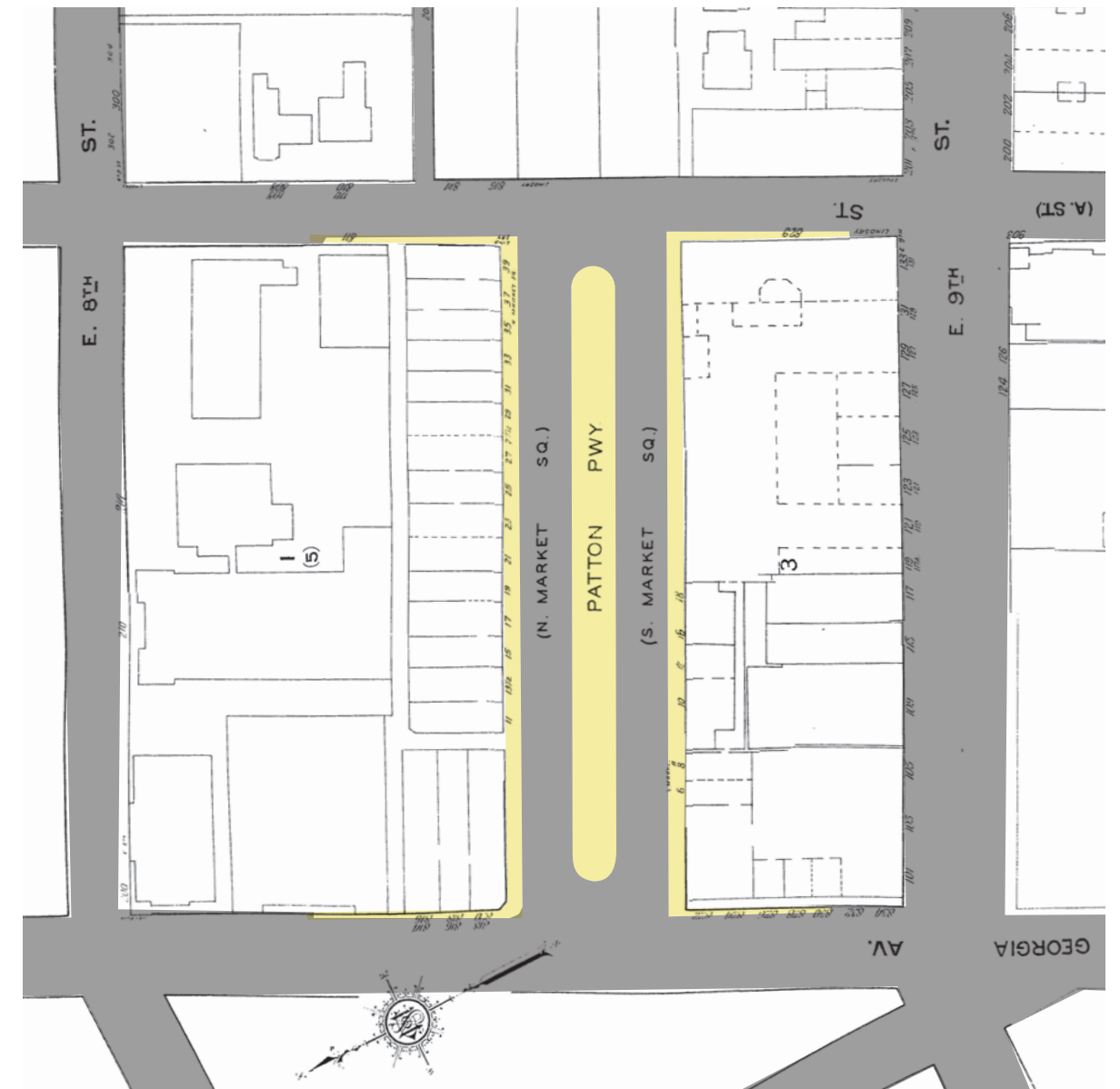
Sanborn map/diagram 1896

PATTEN PARKWAY

An Evolving Story



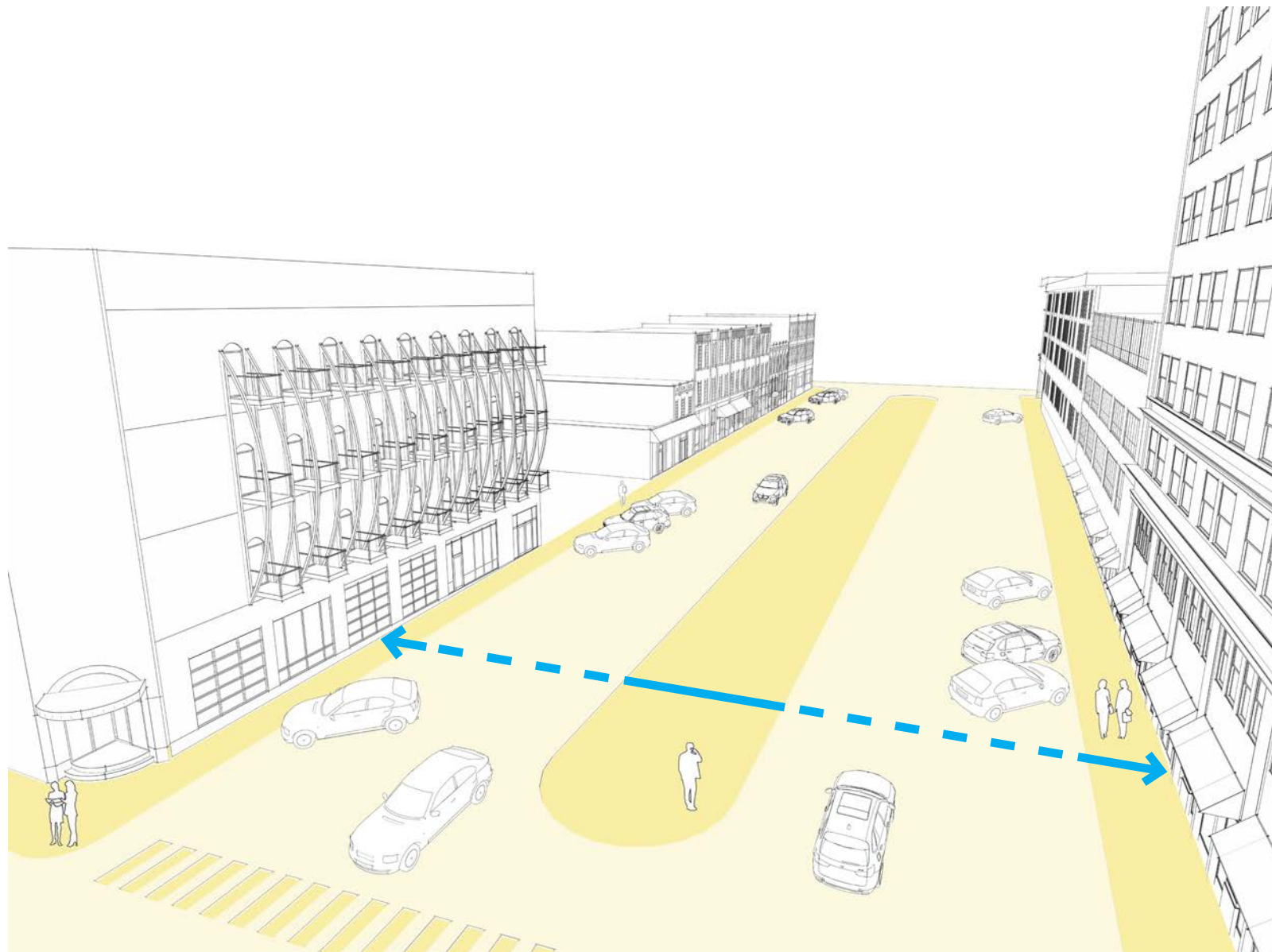
Patten Parkway Today



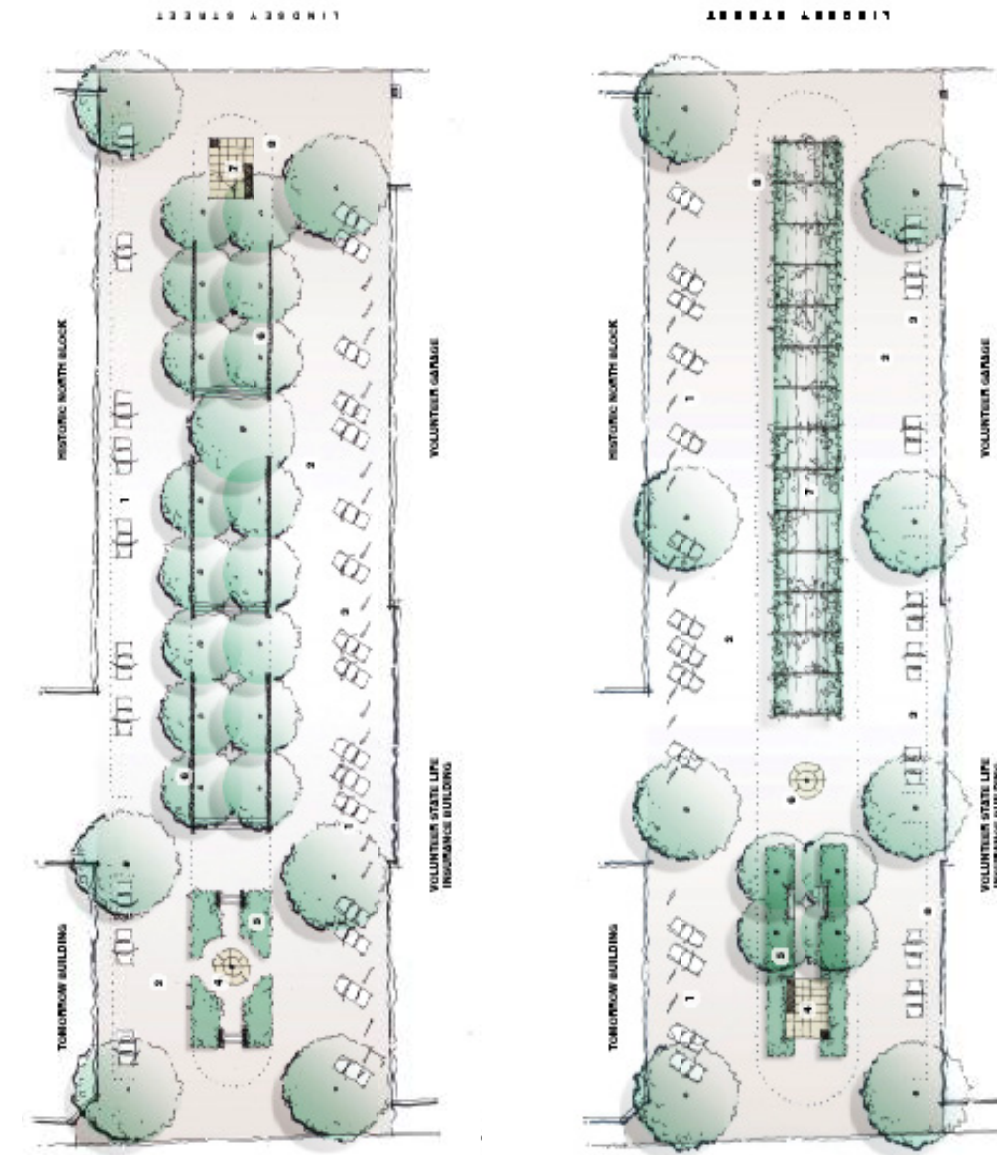
Sanborn map/diagram 1951

PATTEN PARKWAY

An Evolving Story



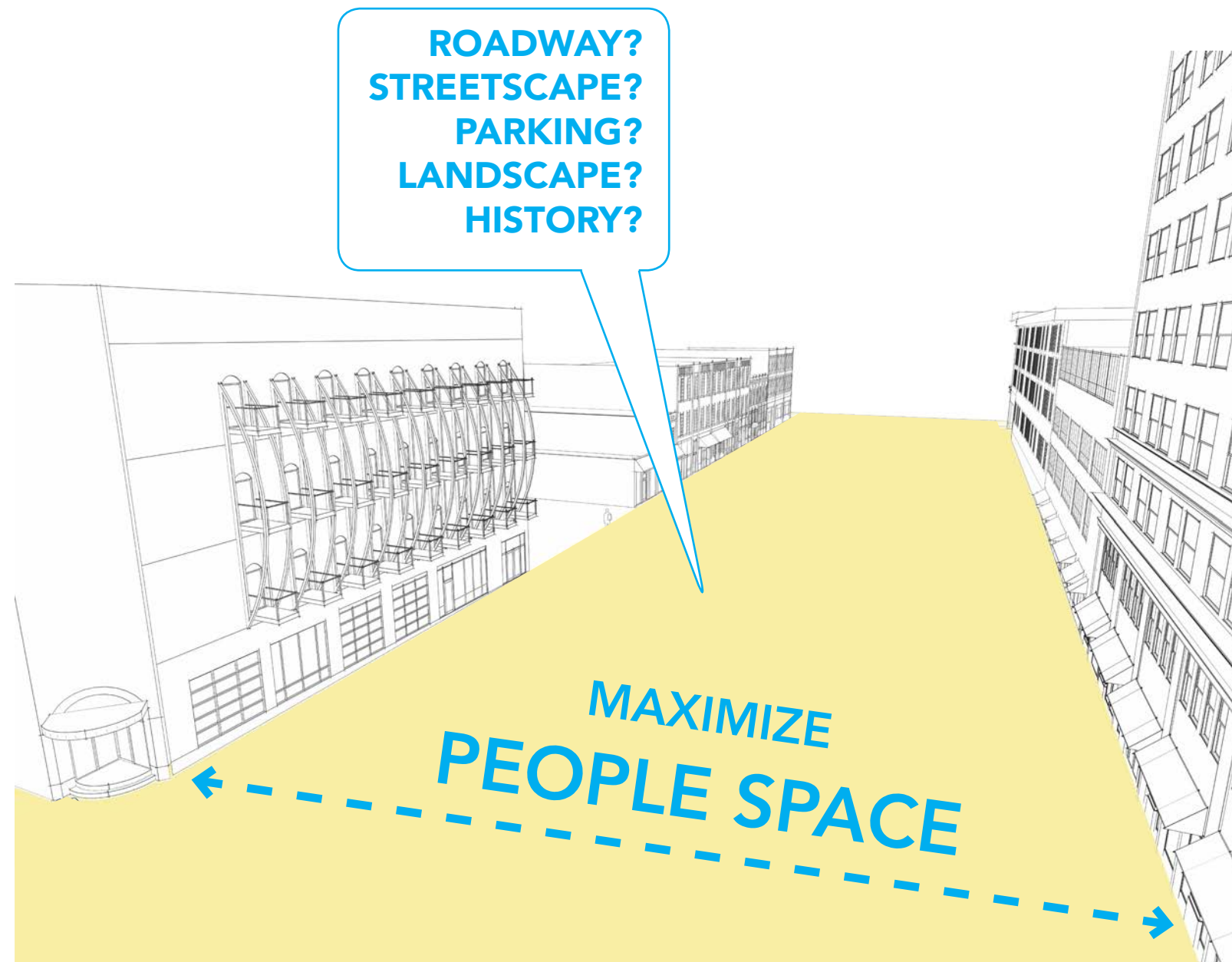
Balancing People + Cars



Parkway Redesign

PATTEN PARKWAY

An Evolving Story



PRINCIPLES

Patten Parkway should retain a message of its past – the design should be informed by but not dictated by history, **marrying history with innovation.**

The space should be resilient – **flexible and adaptable** over time to serve a variety of purposes.

The Parkway should balance appropriated space by tenants and space dedicated to cars with truly public space open to all with a **priority given to public space.**

Patten Parkway should create **opportunity for broad connections** as the district and immediate context develop.

Patten Parkway should be a unique urban room, creating a cohesive space which **enhances its inherent quality and scale.**