

12 Fall from baker-style scaffold – Inspection #1159883

A **29 year old male** employee was fatally injured when he fell 5’ feet 5” inches from a baker scaffold striking his head on the concrete floor. On the day of the accident, the victim was working alone, finishing drywall from a baker scaffold, when fellow workers heard a noise. They found the victim unresponsive and bleeding next to the scaffold. There were no witnesses to the accident. During the investigation and interviews, it was determined the caster/wheel locks on the baker-style scaffold were not engaged which could have allowed movement of the scaffold causing the employee to lose his balance and fall. The employer had not provided scaffold training by a qualified person, and did not have a competent person to inspect the scaffolds.

Citation(s) as Originally Issued

A complete inspection was conducted at the accident scene. Some of the items cited may not directly relate to the fatality.

Citation 1 Item 1

29 CFR 1926.451(f)(3)	Scaffolds and scaffold components were not inspected for visible defects by a competent person before each work shift, and after any occurrence which could affect a scaffold’s structural integrity. In that the employer had not designated a competent person to inspect the baker-style scaffold located in Room #B15.
-----------------------	--

Citation 1 Item 1b

29 CFR 1926.452(w)(2)	Scaffolds casters and wheels were not locked with positive wheel and/or wheel and swivel locks, or equivalent means, to prevent movement of the scaffold while the scaffold was used in a stationary manner. In that the caster/wheel locks on a baker-style scaffold, located in Room #B15, were not engaged to prevent movement of the scaffold while in use on or about 6/29/16.
-----------------------	---

Citation 1 Item 1c

29 CFR 1926.454(a)	The employer did not have each employee who performs work while on a scaffold trained by a person qualified in the subject matter to recognize the hazards associated with the type of scaffold being used and to understand the procedures to control or minimize those hazards. In that each employee who worked from the baker-style scaffold was not provided training on hazard recognition and procedures of hazard minimization by a person qualified in the subject matter by the employer.
--------------------	---

12 Fall from baker-style scaffold – Inspection #1159883



Photo 1 of 2 – Example baker-style scaffold. During interviews, it was determined the wheels (left side when facing forward) on the baker scaffold had not been locked. The incident scene was held until a TOSHA inspection was initiated the next day.

12 Fall from baker-style scaffold – Inspection #1159883

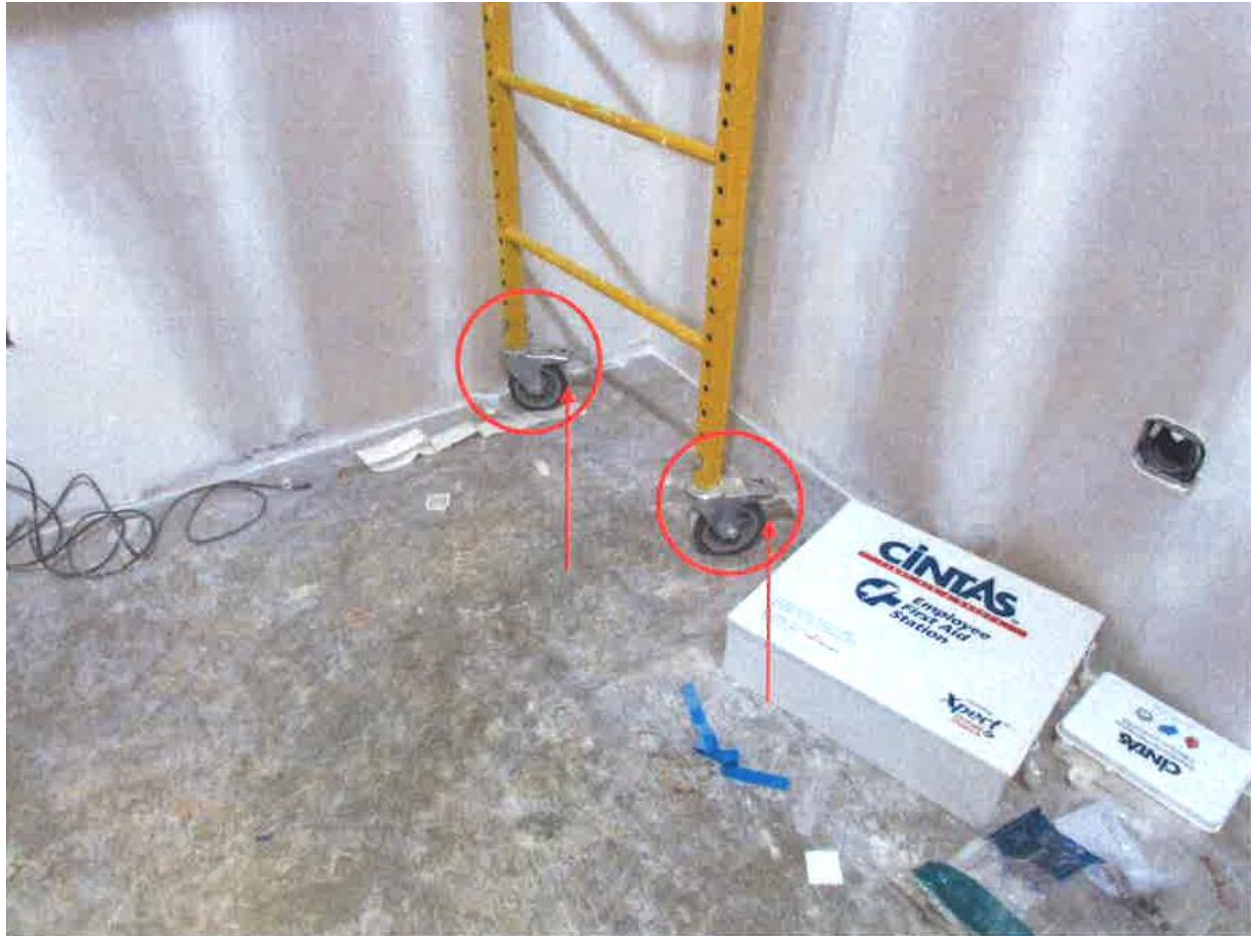


Photo 2 of 2 – Demonstrates the wheels (right side when facing forward) on the baker scaffold had not been locked also.